

1 *Prepared for PLOS Neglected Tropical Diseases*

2

3 **Experience in the validation of a rapid test for NS1 and IgM for early diagnosis during a**  
4 **dengue epidemic in Colombia**

5

6 **Experience in the validation of a rapid test for NS1 and IgM for dengue diagnosis**

7

8 Rosa-Margarita Gélvez Ramírez<sup>1,4\*</sup>, Mónica Patricia Consuegra<sup>1</sup>, María Isabel Estupiñan<sup>1</sup>,

9 Adriana Torres Rangel<sup>2</sup>, Víctor Mauricio Herrera<sup>3</sup>, Xavier de Lamballerie<sup>4</sup>, Luis Ángel Villar

10 Centeno<sup>1\*</sup>

11

12 1. Centro de Atención y Diagnóstico de Enfermedades Infecciosas-CDI, Fundación

13 INFOVIDA, Bucaramanga, Colombia

14 2. Hospital Local del Norte, Instituto de Salud de Bucaramanga, ISABU

15 3. Universidad Industrial de Santander-UIS

16 4. Unité des Virus Émergents (UVE: Aix-Marseille Univ-IRD 190-Inserm 1207), Marseille,

17 France

18

19 \*Co-corresponding authors

20

## 21 **Abstract**

22 Dengue has a broad spectrum of syndromic presentations, making clinical diagnosis difficult in

23 regions where acute febrile syndrome has multiple etiologies. Rapid tests for detecting NS1 and

24 IgM are broadly proposed for the early diagnosis of dengue; however, their implementation in

25 primary care settings is inconsistent, and the relevance of IgM detection in this context has not

26 been firmly established. Our study aimed to describe the experience of validating an NS1-IgM

27 rapid test in primary care settings in Bucaramanga, Colombia, during a dengue epidemic (2018 to  
28 2020). We tested blood samples from 568 patients with a clinical diagnosis of dengue using the  
29 Bioline Dengue Duo rapid test and RT-PCR as a reference to estimate sensitivity, specificity, and  
30 positive and negative predictive values (SE, SP, PPV, and NPV, respectively). The prevalence of  
31 infection was 32.9% (95%CI: 29.1, 36.8), whereas SE and SP were 83.4% and 72.7% for NS1  
32 without statistical heterogeneity across disease duration. NS1's PPV and NPV were 60.0% and  
33 89.9% at the observed prevalence. Our results show that NS1 and IgM rapid tests (POCT) are  
34 feasible in the primary care setting. The contribution of the NS1 test was indisputable, with high-  
35 performance levels far superior to those of the IgM test. The NS1+IgM combination did not offer  
36 a significant advantage over NS1 alone.

37

## 38 **Introduction**

39 Dengue, a vector-borne arboviral infection, is currently one of the diseases with the greatest health  
40 burden among populations with active transmission, showing a steadily increasing trend in the  
41 number of cases during the last decade and transitioning from endemicity to hyperendemicity  
42 probably due to a lack of effective surveillance, vector control, and diagnostic strategies (1). In  
43 2019, the number of infected individuals, hospitalizations, and fatal cases increased ten-fold  
44 compared to the previous year (2). In the Americas, 2,809,818 cases were reported in 2022, with  
45 a cumulative incidence of 283 per 100,000 inhabitants, and up to the 10<sup>th</sup> epidemiological week of  
46 2023, dengue accounted for about 3 out of 4 cases of arboviral infections (3).

47

48 In Colombia, the epidemiological behaviour of dengue is complex due in part to the presence of  
49 competent vectors such as *Aedes aegypti* and *Aedes albopictus*, the circulation of all four  
50 serotypes of the dengue virus (DENV), the immunological susceptibility of the population, a long  
51 history of internal migration and more recently, the phenomena of massive migration across  
52 borders (4). During the last two decades the country has witnessed outbreaks in 1998, 2002, 2010,

53 2013, and 2019, with case-fatality rates above 2% (4). Throughout 2023 the Colombian Ministry  
54 of Health has reported 56,585 cases of dengue, including 821 severe cases, which represents an  
55 approximately nine-fold increase compared to the same period in 2022 (5). The east-central region  
56 of the country has been historically one of the most affected areas by dengue, recording 24,997,  
57 49,059, 45,726, and 46,598 cases in the epidemics of 2002, 2010, 2013, and 2019, respectively  
58 (6).

59  
60 In dengue endemic areas of Latin-American the differential diagnosis for acute fever illness  
61 comprises a broad spectrum of infections including another arbovirus. A major challenge in clinical  
62 diagnosis is to differentiate dengue from other infectious diseases such as chikungunya, Zika,  
63 leptospirosis, influenza, and even HIV (7–10). For instance, dengue and chikungunya have  
64 overlapping symptoms such as fever, headache, rash, and arthralgia during the first days of  
65 disease, which potentially leads to misdiagnosis (11). Notably, a proportion of dengue cases will  
66 progress to a life-threatening severe disease; however, prognostic factors, collectively known as  
67 warning dengue signs (WDS), are nonspecific and often develop late in the course of illness (12).  
68 In this context, the access to an early and accurate diagnosis of dengue infection, particularly in  
69 the primary healthcare setting, would improve the opportunity to stratify risk and closely monitor  
70 patients with high likelihood of progression to complications and death.

71  
72 According to the Centers for Disease Control and Prevention (CDC), a positive nucleic acid  
73 amplification test (NAAT) or a positive antigenic test (nonstructural protein 1; NS1) performed in a  
74 single sample obtained during the acute phase of disease ( $\leq 7$  days after fever onset) is considered  
75 a confirmatory diagnosis for dengue (13). Testing for IgM antibodies is recommended as a  
76 complementary approach during the acute phase; however, it is most useful when performed in  
77 convalescent samples ( $> 7$  days post symptom onset) although a positive result in a single  
78 specimen is only considered presumptive of dengue virus infection. Unfortunately, due to the

79 shortage in infrastructure, supplies, and trained staff, it is not possible to perform NAATs in most  
80 of the Colombian health centers, and even IgM antibody detection tests usually require referral of  
81 samples to mass-processing reference laboratories. These limitations preclude any attempt to  
82 make early etiological diagnosis of dengue, scenario in which medical management of patients  
83 almost exclusively relies on clinical diagnosis.

84  
85 In this context, the development and implementation of point-of-care testing (POCT) strategies,  
86 whose results are obtained in real-time, that is, in parallel to the clinical evaluation of patients,  
87 constitute a promising alternative to overcome the barriers of etiological diagnosis in resource-  
88 limited environments. These strategies should comply with the WHO's requirements according to  
89 the ASSURED criteria: Affordable, Sensitive, Specific, User-friendly, Rapid and Robust,  
90 Equipment-free, and Deliverable to end-users (14–17). In the case of dengue, POCT technologies,  
91 specifically rapid diagnostic tests (RDT), have shown to be highly reliable, although  
92 heterogeneous in terms of their diagnostic accuracy compared to NAATs (18–20). The aim of this  
93 report is to describe the experience around the validation of a RDT to detect NS1 antigens and  
94 IgM antibodies as a POCT in a primary healthcare facility for the early diagnosis of dengue during  
95 an epidemic in Colombia.

96

## 97 **Methods**

98 In 2018, the World Health Organization (WHO) and the Pan American Health Organization  
99 (PAHO) issued an epidemiological alert considering “the onset of the season of increased dengue  
100 transmission in the Southern Hemisphere” and recommended that “Member States implement  
101 preparedness and response actions to prevent dengue transmission and avoid deaths from this  
102 disease” (21). In response to this alert, a complementary surveillance system was established in  
103 the context of the public health network of Bucaramanga, Colombia, between 2018 and 2020, with  
104 the purpose of improving early detection of dengue cases during the acute phase of the disease.

105 As part of this initiative, an immunochromatography test (rapid test-POCT) for the detection of  
106 DENV non-structural protein 1 (NS1) and IgM antibodies against DENV was implemented to assist  
107 the early diagnosis of febrile patients.

108

#### 109 *Study area*

110 This study was conducted in Bucaramanga, a midsize city located in the northeast of Colombia.  
111 This city has a public health network named “Instituto de Salud de Bucaramanga (ISABU)”  
112 composed by 22 primary health-care facilities and 2 teaching hospitals: the “Unidad Materno  
113 Infantil Santa Teresita (UIMIST) and the “Hospital Local del Norte (HLN)” that provide first level of  
114 complexity services.

115

#### 116 *Eligibility and definition of clinically suspected dengue cases*

117 Patients who consecutively sought medical care at the HLN between December 2018 and July  
118 2019 were eligible for the study. In addition, patients had to be classified as clinically suspected  
119 cases of dengue, defined as a history of febrile illness of 1 to 5 days' duration and at least one of  
120 the following symptoms or signs: headache, arthralgia, myalgia, retro orbital pain, positive  
121 tourniquet test, petechiae, or hemorrhagic manifestations. A representative sample of cases  
122 presenting a diagnostic dilemma underwent clinical examination by a trained physician and  
123 provided a blood sample for a complete blood count and diagnostic tests.

124

#### 125 *Diagnostic testing*

126 First, the remaining blood samples after the complete blood count were analyzed in the laboratory  
127 of the HLN by a trained microbiologist, blinded to clinical information, using the Bionline Dengue  
128 Duo (NS1 Ag + IgM/IgG; Abbott Ref 11FK46) according to the manufacturer's recommendations.  
129 Bionline Dengue Duo is an immunochromatographic qualitative test (rapid test with

130 negative/positive results) that allows the simultaneous detection of NS1 antigen and antibodies  
131 class IgM and IgG against DENV.

132  
133 As temporary storage after the rapid tests, the remaining samples were centrifuged for 10 min at  
134 3.500 rpm, aliquoted and stored at -80°C in the biorepository. All sample aliquots, regardless of  
135 the results of the rapid tests and blind of it, were sent to the reference laboratory Unité des Virus  
136 Émergents (UVE) at Aix-Marseille University in France. This was justified because in the pre-  
137 pandemic era of COVID-19 we did not have the infrastructure, reagents and equipment necessary  
138 to perform these tests. Once at UVE, the samples were thawed and trained personnel performed  
139 the tests using the molecular biology real-time PCR (RT-PCR) test for the genomic detection of  
140 DENV, CHIKV and ZIKV, considered the reference test. In case of positive results, serotyping  
141 tests for DENV-1, DENV-2, DENV-3, and DENV-4 were performed.

142  
143 RNA extraction was performed using the commercial kit QIAamp Viral RNA Mini QIAcube Kit  
144 (QIAGEN 52926) by automated method. Once the RNA was purified, retrotranscription and  
145 amplification were performed in a single step using the commercial enzyme SuperScript™ III  
146 Platinum™ One-Step qRT-PCR (11732088) and the primer and probe amplification systems,  
147 provided by the EVAg (European Virus Archive-GLOBAL), following a previously published  
148 amplification protocol (22,23); a positive RT-PCR result was considered with a CT (Cycle  
149 Threshold) of  $\leq 37$ . Those who interpreted the rapid test and the RT-PCR reference standard were  
150 blinded to the other result.

151  
152 An aliquot of these samples were processed locally for viral isolation. C6/36 HT cells were  
153 inoculated with samples diluted 1:25 in 1 mL of L-15 medium supplemented with 2% fetal bovine  
154 serum, penicillin-streptomycin and L-glutamine. Cells were incubated at +34°C and observed daily  
155 for the presence of cytopathic effect (CPE). On day 7, or earlier if CPE was detected, the

156 supernatant was collected and cells were fixed for processing by indirect immunofluorescence  
157 (IFI).

158

### 159 *Ethical Considerations*

160 This study was approved by the Scientific Technical Committee of the HLN-ISABU, the  
161 Institutional Review Board and Ethical Committee of the “Centro de Atención y Diagnóstico de  
162 Enfermedades Infecciosas (CDI)” in Bucaramanga and the Ministry of Health and Social  
163 Protection of Colombia.

164

### 165 *Statistical analysis*

166 We estimated the sensitivity and specificity of the NS1 rapid test contrasted against RT-PCR along  
167 with their corresponding exact binomial 95% confidence intervals (95%CI) for the whole sample  
168 and stratifying by disease duration. We contrasted accuracy indexes by estimating relative  
169 probabilities (RP; i.e., the ratio of sensitivities [RP<sub>se</sub>] or specificities [RP<sub>sp</sub>]) using generalized  
170 linear models (logarithmic link function) separately, according to the reference result (24): RPs for  
171 sensitivities and specificities were estimated in patients with positive and negative RT-PCR  
172 results, respectively. We estimated the positive (PPV) and negative (NPV) predictive values for a  
173 predefined set of prevalences ranging from 10-50%, using Bayes’ theorem (25): First, we  
174 calculated post-test odds of disease as the product of pre-test odds (from the assumed  
175 prevalences) and the diagnostic likelihood ratios (DRLs) of positive and negative test results,  
176 respectively. Then, we transformed the positive and negative post-test odds into their respective  
177 predictive values. This procedure was repeated for each assumed prevalence by disease duration  
178 while updating the DRLs accordingly. We derived 95%CI for the predictive values by estimating  
179 first the lower and upper 95% confidence limits of the DLRs (26) and then replacing those values  
180 into the calculation described above, following the Bayesian approach.

181

## 182 Results

183 Our cohort was conducted in the context of the complementary surveillance system as we  
 184 describe above. We included 568 patients who sought medical care at the HLN where the cases  
 185 were evaluated sequentially between December 2018 and July 2019. The median age of  
 186 participants was 13 years (interquartile range: 6 – 25 years; 62.7% were children), and 269  
 187 (47.4%) were male. Table 1 shows the distribution of positive results from NS1 and IgM rapid  
 188 tests, independently and combined, and RT-PCR by disease duration. Overall, the prevalence of  
 189 infection as defined by a positive RT-PCR was 32.9% (IC95%: 29.1, 36.8), similar to that based  
 190 on a positive IgM rapid test but significantly lower than that based on a positive NS1 rapid test:  
 191 33.1% and 45.8%, respectively. On the other hand, 54.0% of samples were defined as positive  
 192 when considering the combination of NS1+IgM results.

193

194

195 **Table 1.** RT-PCR and rapid tests positivity (%) by disease duration.

Duration	n	Test			
		RT-PCR	NS1	IgM	NS1+IgM*
0	15	60.0 (32.3, 83.7)	73.3 (44.9, 92.2)	40.0 (16.3, 67.7)	73.3 (44.9, 92.2)
1	38	26.3 (13.4, 43.1)	39.5 (24.0, 56.6)	18.4 (7.7, 34.3)	42.1 (26.3, 59.2)
2	34	38.2 (22.2, 56.4)	35.3 (19.7, 53.5)	14.7 (5.0, 31.1)	41.2 (24.6, 59.3)
3	95	41.1 (31.1, 51.6)	45.3 (35.0, 55.8)	24.2 (16.0, 34.1)	49.5 (39.1, 59.9)
4	126	53.2 (44.1, 62.1)	55.6 (46.4, 64.4)	27.8 (20.2, 36.5)	63.5 (54.4, 71.9)
5	121	21.5 (14.5, 29.9)	48.8 (39.6, 58.0)	47.1 (38.0, 56.4)	61.2 (51.9, 71.9)
6	53	18.9 (9.4, 32.0)	41.5 (28.1, 55.9)	43.4 (29.8, 57.7)	50.9 (36.8, 64.9)
7	37	16.2 (6.2, 32.0)	35.1 (20.2, 52.5)	40.5 (24.8, 57.9)	45.9 (29.5, 63.1)
8	23	21.7 (7.5, 43.7)	43.5 (23.2, 65.5)	39.1 (19.7, 61.5)	52.2 (30.6, 73.2)
9	10	20.0 (2.5, 55.6)	50.0 (18.7, 81.3)	50.0 (18.7, 81.3)	60.0 (26.2, 87.8)
10	6	0.0 (0.0, 45.9)	0.0 (0.0, 45.9)	33.3 (4.3, 77.7)	33.3 (4.3, 77.7)
≥11	10	0.0 (0.0, 30.9)	0.0 (0.0, 30.9)	9.5 (0.2, 44.5)	10.0 (0.3, 44.5)
<b>All</b>	<b>568</b>	<b>32.9 (29.1, 37.0)</b>	<b>45.8 (41.6, 50.0)</b>	<b>33.1 (29.2, 37.1)</b>	<b>54.0 (49.9, 58.2)</b>

196 \* Positive/negative combined result: NS1[+] or IgM[+] / NS1[-] and IgM[-].

197

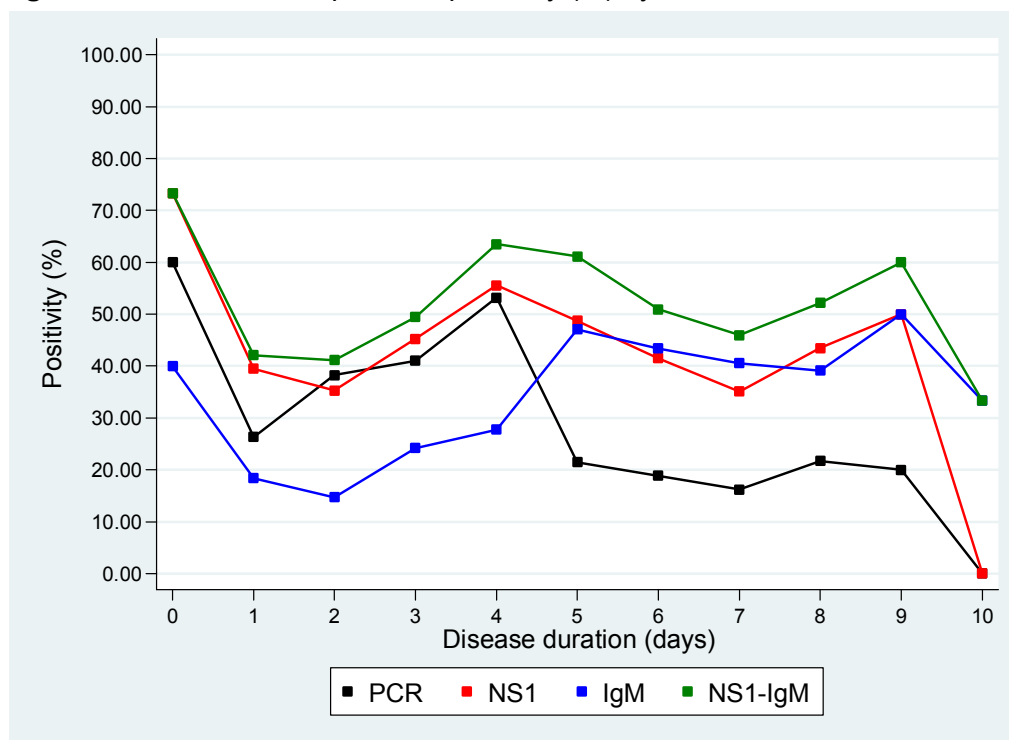
198 Regarding disease duration, 429 (75.5%) and 519 (89.9%) patients provided samples within the  
 199 first 5- and 7-days post-onset of symptoms: positivity to RT-PCR and NS1 rapid test was higher



200 in samples of patients with  $\leq 5$  versus  $> 5$  days of disease duration (38.2% versus 16.6%, and  
201 48.9% versus 35.9%, respectively), as well as in samples of patients with  $\leq 7$  versus  $> 7$  days of  
202 disease duration (34.7% versus 14.3%, and 47.2% versus 30.6%, respectively). The opposite  
203 occurred in the case of IgM, particularly comparing samples collected from patients with  $\leq 5$  versus  
204  $> 5$  days of disease duration: 31.0% versus 39.6%, respectively (Table 1, Figure 1).

205

206 **Figure 1.** RT-PCR and rapid tests positivity (%) by disease duration.



207  
208  
209

\*NS1-IgM positive/negative combined result: NS1[+] or IgM[+] / NS1[-] and IgM[-].

210 The overall sensitivity and specificity of NS1 were 83.4% (95%CI: 77.3, 88.5) and 72.7% (95%CI:  
211 67.9, 77.1), respectively; however, when evaluated up to 5- and 7-days post-onset of symptoms  
212 the corresponding estimates were 84.2% (95%CI: 77.6, 89.4) and 72.8% (95%CI: 67.0, 78.1), and  
213 83.9% (95%CI: 77.7, 88.9) and 72.3% (95%CI: 67.2, 77.0), respectively. Neither sensitivity nor  
214 specificity differed statistically across disease duration (Table 2, Figure 2). Evaluated at the  
215 observed prevalence of infection (RT-PCR positivity of 32.9%), the PPV and NPV of the NS1 rapid

216 test were 60.0% (95%CI: 53.8, 66.0) and 89.9% (95%CI: 86.0, 93.1), however as expected, values  
217 fluctuate according to the day of illness and the prevalence of the disease. The highest value  
218 corresponds to day 2 being for PPV 100% for all the prevalence and for NPV 99% to a prevalence  
219 of 10% (95%CI: 94.6, 98.8) (Figure 3), when sensitivity and specificity had their highest values.

220

221 **Table 2.** Sensitivity, specificity, and relative probabilities (RP) of NS1 by disease duration up  
222 to 7 days from disease's onset.

Duration	n	Sensitivity	RP*	Specificity	RP*
0	15	88.9 (51.8, 99.7)	1.00	50.0 (11.8, 88.2)	1.00
1	38	90.0 (55.5, 99.7)	1.01 (0.74, 1.38)	78.6 (59.0, 91.7)	1.57 (0.69, 3.58)
2	34	92.3 (64.0, 99.8)	1.04 (0.79, 1.37)	100.0 (83.9, 100.0)	2.09 (0.94, 4.66)
3	95	82.1 (66.5, 92.5)	0.92 (0.70, 1.21)	80.4 (67.6, 89.8)	1.61 (0.71, 3.61)
4	126	82.1 (70.8, 90.4)	0.92 (0.71, 1.19)	74.6 (61.6, 85.0)	1.49 (0.66, 3.37)
5	121	84.6 (65.1, 95.6)	0.95 (0.72, 1.26)	61.1 (50.5, 70.9)	1.22 (0.54, 2.76)
6	53	70.0 (34.8, 93.3)	0.78 (0.49, 1.26)	65.1 (49.1, 79.0)	1.30 (0.57, 2.99)
7	37	100.0 (54.1, 100.0)	1.18 (0.94, 1.48)	77.4 (58.9, 90.4)	1.55 (0.68, 3.52)

223 \* RP: Relative probability (references: 0 days for duration).

224

225

226

227

228

229

230

231

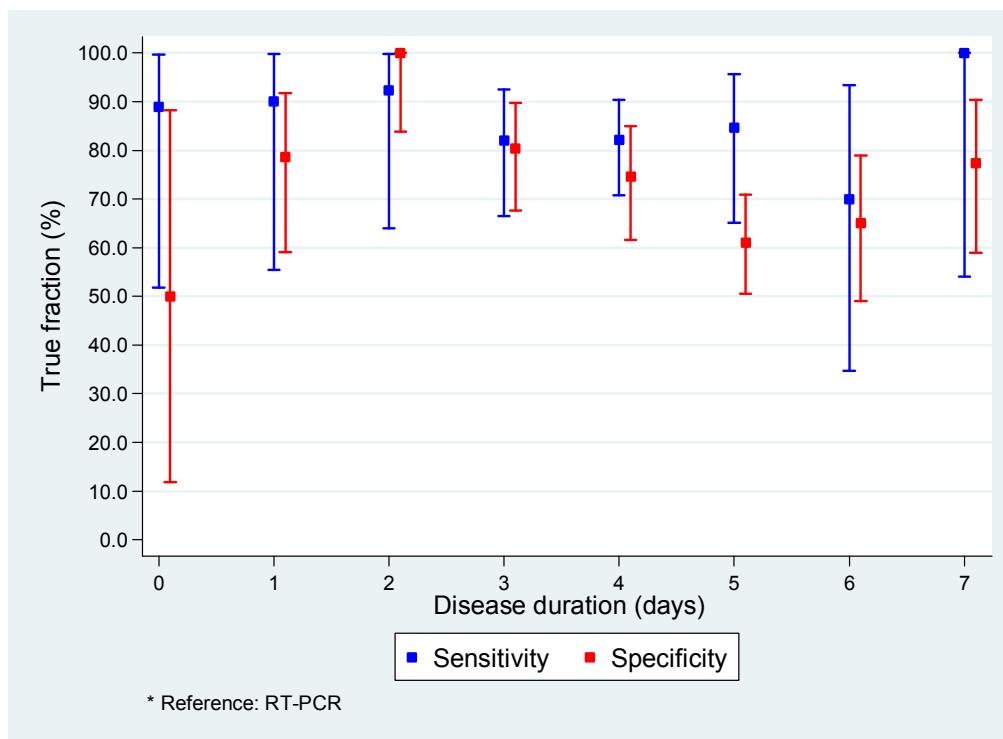
232

233

234

235

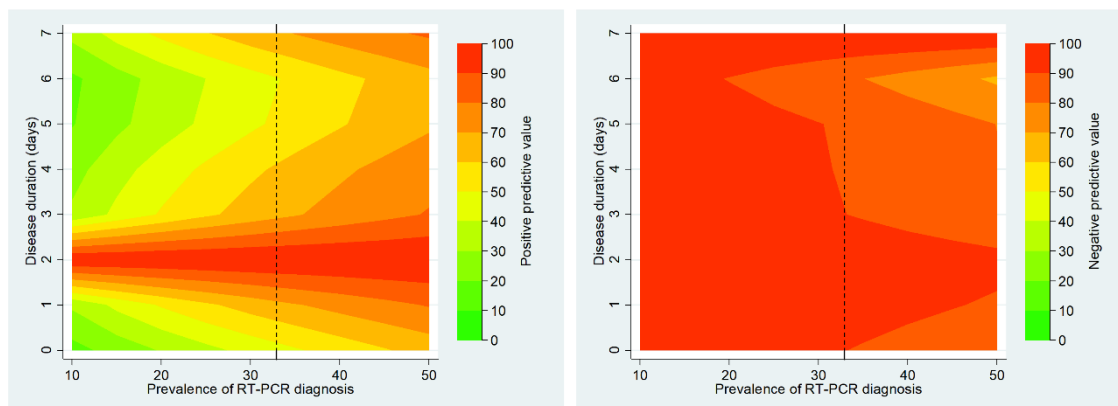
236 **Figure 2.** Sensitivity and specificity of NS1 rapid test, compared against RT-  
237 PCR\*, by disease duration up to 7 days from disease's onset.



238

239

240 **Figure 3.** Predictive values of NS1 rapid test by disease duration and a set of assumed  
241 prevalences.



242

243 Left: Positive predictive value; right: Negative predictive value. The black dashed line corresponds

244 to the observed prevalence of infection by RT-PCR (32.9%).

245  
246 All samples were processed by a molecular biology test for genomic detection of DENV, CHIKV  
247 and ZIKV (Trioplex) in the same reaction. In these samples, only the DENV genome was detected  
248 and for CHIKV and ZIKV the results were negative. From all samples with a positive NS1 result  
249 on the rapid test were obtained virus isolation. Of the positive cases for DENV, the infecting  
250 serotype was determined, with 96% corresponding to DENV-1 and 4% to DENV-2. Virus isolation  
251 was achieved for each of these serotypes, yielding information amenable to sequencing tests for  
252 future phylogeny and phylogeography studies

253  
254 **Discussion**  
255 After the introduction of CHIKV and ZIKV, during 2014 and 2015 respectively, a new DENV  
256 epidemic occurred during the years 2018 to 2020 in Colombia (27). During this period, this study  
257 was carried out with the purpose of implementing in a primary care center in the city of  
258 Bucaramanga, the use of a rapid immunochromatographic test to diagnose dengue disease in an  
259 area where the nonspecific febrile illness is multi-etiological. This study showed that the NS1+IgM  
260 rapid test is not only feasible in the context of primary care at the same point where patients are  
261 seen, but also proved to be an accurate method for the diagnosis of dengue in endemic areas.  
262 This suggesting that it is possible to make an early and adequate diagnosis at the patient's first  
263 visit (28–33).

264  
265 During the study period, in our country dengue rapid tests were not authorized for laboratory-  
266 confirmed diagnosis of dengue disease, so virological or serological reference tests should always  
267 be applied (34). This implied transferring the samples to other reference laboratories with the  
268 specific capacity (RT-PCR test) or collecting a second sample in the early convalescent phase of  
269 disease in order to be able to perform serological tests to detect IgM seroconversion. This circuit  
270 meant that the opportunity for results in less than 24 hours was extended to 96 hours or even

271 weeks. This was a late diagnosis and, in situations of outbreaks and epidemics, the physician  
272 would initiate clinical management according to the WHO guidelines (12) without the availability  
273 of confirmatory laboratory tests. Follow-up to obtain a second sample was difficult since patients  
274 did not return to the health center when they felt better (35). This situation created a culture for  
275 many years in which patients only attended their health center when they already felt very ill, even  
276 with warning dengue signs-WDS. Thus, when they arrived at the primary care health center, some  
277 cases required a fast referral to more complex health-care services. The purpose of the  
278 introduction of this rapid test was offered to physicians a tool for the reduction of their clinical  
279 uncertain during the first seventh days of onset of dengue illness and for patients to understand  
280 the importance of this.

281  
282 89.9% (n=519) of the patients attended and provided specimens during this acute phase of the  
283 disease. The prevalence of dengue in the population study was 32.9%. According to reports from  
284 the Instituto Nacional de Salud-INS and the Ministerio de Salud y Protección Social, the dengue  
285 in Colombia in ER 01 to 07 was placed in a situation of alert. Since ER 08 presented a behavior  
286 above the expected number of cases at the national level, compared to its historical behavior  
287 (2011-2018), which placed the country in an epidemic situation for week 52 of 2019 (36). For this  
288 same period in the Americas region PAHO/WHO reported that the epidemic, which had spread in  
289 the region by 2019, was contributing a significant percentage of the population under 15 years of  
290 age (37). In our findings, the median age of the patients corresponded to 13 years (interquartile  
291 range: 6 - 25 years) where 62.7% were children. These results are therefore in accordance with  
292 the epidemiology by age group affected during this epidemic in the Americas region. Studies have  
293 shown that the greatest susceptibility to DENV infections corresponds to young patients where  
294 primary infections prevail in this age group and the estimated risk of dengue increases with age  
295 (38).

296

297 Regarding the percentage of positivity, this corresponded to 45.8% for NS1 and 33.1% for IgM. If  
298 we assume that 89.9% of the patients were in the acute phase of the disease, it is reasonable to  
299 think that the greater proportion of positives corresponds to the detection of NS1 antigen and not  
300 IgM antibodies against DENV. However, when we combine the percentage of positivity for NS1  
301 and IgM this value increases to 54% positivity. According to the Centers for Disease Control and  
302 Prevention (CDC) recommendations for the diagnosis of dengue, a negative RT-PCR or NS1  
303 result cannot rule out the diagnosis. On the contrary, it is recommended that during the first 7 days  
304 of illness, molecular biology tests such as RT-PCR, NS1 antigen detection and IgM antibody  
305 detection be combined to increase case detection in a single sample during the acute phase of  
306 the disease (13). The results of this study are in agreement with this recommendation, since it is  
307 possible to observe an increase of almost 10% in the detection of dengue cases when combining  
308 NS1 and IgM tests in the same sample during the first 7 days of illness compared to only detecting  
309 NS1 or IgM separately. Having a device that can detect both NS1 and IgM at the same time could  
310 allow the detection window to be extended during a longer phase of the disease and that the  
311 performance advantages of both NS1 and IgM complement each other in the diagnosis of DENV.

312  
313 The results discriminated by day of illness are also consistent; in the acute phase of the disease  
314 versus the convalescent phase ( $\leq 7$  versus  $> 7$  days) the highest positivity is given by RT-PCR and  
315 NS1 with 34.7% versus 14.3%, and 47.2% versus 30.6%, respectively. The opposite occurs with  
316 IgM where its positivity increases during the convalescent phase of the disease. This reiterates  
317 the concept that DENV diagnostic tests are adjusted to the natural history of the disease, where  
318 direct detection of the virus (RNA or antigens) is done in the early phases of the disease where  
319 viral replication is active and indirect detection tests (IgM antibodies against DENV) occur in the  
320 convalescent phases where the immune response begins to develop (39,40). This antibody  
321 response and its detection will also depend on the type of infection the patient is suffering from;  
322 for primary infections, IgM is detected from the fifth day of illness and IgG from the tenth day of

323 illness. On the contrary, in secondary infections, the IgG present from the previous infection  
324 increases rapidly and IgM could be detected at the same time as IgM (40,41). The type of infection  
325 was not evaluated in order to see the effect on sensitivity caused by the type of primary and  
326 secondary infection and its approach in dengue endemic areas. NS1 protein is secreted as a  
327 soluble hexamer from DENV-infected cells and circulates in the bloodstream of infected patients.

328  
329 During the viremic phase of DENV infection, NS1 is concomitantly produced during the virus  
330 replication process and is likely to remain in circulation 2 to 3 days after the viremic phase.  
331 Antigenemia (NS1) and viremia (RNA) are correlated according to the days of disease (42,43).  
332 The validation of diagnostic tests that include NS1 antigen should also be compared with a  
333 reference test. In this study, the reference test corresponds to the PCR test through the detection  
334 of the DENV genome clinical data and the samples were collected prospectively from patients  
335 who were representative of the spectrum of the disease. The results of the rapid diagnosis test  
336 and of the reference standard (RT-PCR test) was independently interpreted.

337  
338 To validate the rapid diagnostic tests that include NS1 antigen seems reasonable considered with  
339 as reference a test that measures the same, like ELISA type tests for the detection of NS1  
340 antigens, a comparison that looks as a more equitable. But, if patients with NS1 positive in rapid  
341 test have a negative results in the ELISA test the assessment of RDT properties may be biased  
342 (differential verification bias) excluding dengue as etiology and, for this way, conducting to a  
343 misclassification of cases and invalid data.

344  
345 When comparing the RT-PCR positivity percentages of 32.9% with that of NS1 of 45.8%, the  
346 results could suggest an excess of false positives attributed to the NS1 results of the rapid test.  
347 However, molecular biology tests are not 100% sensitive or specific, therefore, and also following  
348 CDC recommendations, if a NS1 test is positive, this result confirms a diagnosis of current DENV

349 infection (13). In this study, the overall sensitivity and specificity of NS1 assessed up to 5 and 7  
350 days after symptom onset corresponded to 84.2% and 72.8%; 83.9% and 72.3%, respectively.  
351 In contrast, the results of the viral isolation conducted locally under unblinding conditions, from  
352 each sample with a positive NS1 in the rapid test, was obtained a positive result for viral culture.  
353 Then, in the context of a dengue outbreak without co-circulation of zika virus, the probability of a  
354 result of dengue NS1 false positive is too low.

355  
356 NS1 protein is secreted as a soluble hexamer from DENV-infected cells and circulates in the  
357 bloodstream of infected patients. During the viremic phase of DENV infection, NS1 is  
358 concomitantly produced during the virus replication process and is likely to remain in circulation 2  
359 to 3 days after the viremic phase. Important to mention that due to its protein nature it is much  
360 more stable than viral RNA molecules, which is why NS1 antigen has become the most common  
361 target for detection during an outbreak or epidemic in field work and its detection also allows for  
362 rapid results at the point of patient care (44,45).

363  
364 A differential stability of NS1 antigen and RNA during test processing is suggested as a hypothesis  
365 attributing to these differences (44,45). According to our local capabilities for 2019, the rapid tests  
366 were run at the same point where the patients were seen, however, the RT-PCR tests were sent  
367 to the UVE reference laboratory in France. The samples were aliquoted, as described in the  
368 methodology, stored at -80°C locally and then shipped from Bucaramanga to Marseille. This  
369 shipment on dry ice could have reached temperatures of -20°C to -40°C during the 7 days of  
370 transport and this temperature increase could have affected the integrity of the virus RNA in the  
371 samples. Researchers from Brazil found that sensitivity and negative predictive value were directly  
372 affected by the preservation conditions of the samples. Tests such as RT-PCR and viral isolation  
373 showed a greater dependence on well-preserved samples to make an accurate diagnosis. Their  
374 results showed that storage of samples for 15 days at -30°C yielded inaccurate results in RT-PCR



375 and viral isolation tests, while in the same samples the NS1 ELISA tests did not show a significant  
376 reduction in positivity (46). In favor of the hypothesis of sample quality deterioration due to  
377 transportation, this study shows that the samples that remained at the local level for viral culture  
378 processing gave positive results for virus isolation and subsequent genomic sequencing.  
379 However, it is important to carry out future studies to replicate this experience and that the  
380 processing of samples for all tests be done locally and in the shortest time possible, to reduce  
381 sample quality bias.

382  
383 The non-concordance of RT-PCR and NS1 positivity results attributed to the possible quality of  
384 the sample corresponds to a stated limitation of this study. However, showing this weakness of  
385 the study also shows a strength and it is to be able to narrate the limitation that molecular biology  
386 tests have by requiring referral to specialized laboratories, which for the year 2019 in our region  
387 consisted even in making a process of importing samples to another country. The results of the  
388 Dengue Duo, were performed on a sample that had less than 2 hours of being collected and where  
389 it was run in the same institution and where the patient was being treated, processed by a health  
390 professional with a simple training, which did not require additional supplies or reagents and where  
391 the result was obtained in less than 8 hours from the time the sample was taken. Thus, this study  
392 shows the advantages of POCT for the diagnosis of DENV in a primary health care center in the  
393 city of Bucaramanga.

394  
395 Another important point to discuss about the specificity of this test is to consider cross-reactions  
396 of IgM antibodies against other flaviviruses. For the case of Colombia and due to the introduction  
397 of ZIKV during 2015-2016, it is important to explore whether this specificity of the IgM of the  
398 Dengue Duo test is affected. In this study, molecular biology tests were processed, in which in a  
399 single RT-PCR reaction any of the genomic targets of DENV-CHIKV-ZIKV are detected (22,23).  
400 The results showed that all samples were positive for DENV and negative for ZIKV and CHIKV.

401 These results were also compared with the report of the INS/Ministerio de Salud, which showed  
402 low circulation of ZIKV and CHIKV in Colombia during the years 2018 to 2020 (36). Based on this  
403 and in the clinical context and high prevalence of dengue, in this study the positive IgM result of  
404 the rapid tests was considered as a confirmed DENV infection. This suggests that the IgM result  
405 could further improve the sensitivity of diagnosis by POCT testing when a patient attends outside  
406 of 7 days of symptom onset. It is important to mention that no sensitivity comparison was made in  
407 this study comparing rapid test IgM results with IgM detection by ELISA, which is why its use is  
408 recommended for future studies.

409  
410 Diagnostic accuracy depends on the pre-test probability as a function of the prevalence of the  
411 disease in the setting. In our study, the prevalence was 32.9%, Positive Predictive Value (PPV)  
412 and Negative Predictive Value (NPV) were 60% and 89.9% for NS1. PPV and NPV values reached  
413 the highest predictive values at 2 days after the onset of disease symptoms when sensitivity and  
414 specificity values are at their highest. From a pragmatic point of view, with a prevalence of 32.9%  
415 and on the same day of illness, a clinician who has a rapid test in his office will have a higher  
416 positive predictive value for NS1. It is important to clarify that in this study the prevalence of DENV  
417 positivity by RT-PCR in this consecutive case series was high; however, it may not reflect the  
418 baseline prevalence, given that it has a preliminary clinical assessment. This preliminary clinical  
419 evaluation clinically filtered suspicious patients and increased the pretest probability; that is, the  
420 clinical examination separated some people from others.

421  
422 Despite the above scenario of a first medical evaluation and its prior classification, tests that have  
423 a high sensitivity also increase their negative predictive values, as in the case of NS1. When the  
424 clinician, through the NS1 rapid test, tells a patient that it is negative, even if he suspects it  
425 clinically, he has a high probability that it is actually negative. Yow and cols (18) in evaluating six  
426 rapid diagnostic tests in Singapore to determine their usefulness in the routine clinical setting for

427 the detection of recent dengue infections found that the PPV and NPV values combining NS1 and  
428 IgM were 100% and 90.9%, respectively. However, these results need to be analyzed with caution  
429 because they will depend on the prevalence of dengue disease, i.e., talking about an outbreak or  
430 epidemic could be very different from periods of low transmission.

431  
432 Another aspect to be included is the performance of the rapid tests according to DENV serotype.  
433 According to the serotyping results in this study, the distribution of serotypes shows that DENV-1  
434 was the predominant serotype (96%) (6), followed by DENV-2 (4%). DENV-3 and DENV-4  
435 serotypes were not detected. These data are consistent with those reported by the INS for the  
436 same period in the same region (36). These data correspond to the outbreak and epidemic nature  
437 of a single-center study, in which viral circulation can be limited to the detection of circulation of  
438 one or two serotypes. Therefore, it could not be determined in this study whether viral serotype  
439 could influence the performance of the Bioline Dengue Duo rapid test. Further studies with  
440 multicenter design in several geographic regions are required to achieve such representativeness  
441 in the same period.

442  
443 Etiological diagnosis of febrile syndrome was demonstrated by means of rapid tests used at the  
444 point of patient care. The sensitization of patients to attend in the early stages of the disease  
445 together with their POCT diagnosis, allowed the description of the circulation of DENV serotypes,  
446 through the application of molecular biology and viral isolation tests, which even allowed the  
447 genomic sequencing of these viruses that circulated during the epidemic of the years 2018 to 2020  
448 in the city of Bucaramanga. Thus contributing to virological surveillance information that could  
449 have an impact on the prediction of new outbreaks and epidemics.

450  
451 It is significant for the interdisciplinary health team that routinely attends to these cases in settings  
452 with a high prevalence of dengue and other febrile diseases to have a diagnostic tool that provides

453 results in 30 minutes that can be performed at the point of care of the patient, that is easy to  
454 perform and interpret, and that is inexpensive. This strengthens the capacity of first level health  
455 centers, improves patient prognosis through timely diagnosis and, in a complementary manner,  
456 and contributes to the knowledge of virological surveillance in a region. In dengue endemic areas,  
457 the differential diagnosis for acute fever illness involve a broad spectrum of infection including  
458 another arbovirus. During the first days of the disease, Dengue and Chikungunya have  
459 overlapping symptoms (ie: fever, headache, rash, arthralgia) leading to misdiagnosis. A proportion  
460 of dengue cases will develop a life-threatening severe disease (SD). Clinical criteria (warning  
461 dengue signs-WDS) are recommended to distinguish between patients who evolve to SD from  
462 uncomplicated dengue cases. However, WDS for severe dengue are nonspecific and often  
463 develop late in the course of illness. For this reason, in the context of a dengue outbreak, the use  
464 in primary health-care services of a dengue rapid test affordable, with high sensitive, specificity  
465 and predictive values during the first 2-4 days of the diseases allow provide for patients a close  
466 monitoring with the expectation to reduce the risk of severe dengue cases. In conclusion, the  
467 validation of a rapid test for NS1 and IgM for the early diagnosis of DENV during an outbreak in  
468 Bucaramanga, Colombia was reported and the advantages and limitations of its use in the setting  
469 of a primary health care center were shown.

470

#### 471 **Acknowledgments**

472 We are grateful to Hospital Local del Norte e Instituto de Salud de Bucaramanga. This study was  
473 supported by Fundación INFOVIDA and for the European Union's Horizon 2020 research and  
474 innovation program under ZIKAlliance grant agreement no. 734548. RMGR was supported by the  
475 French National Research Institute for Sustainable Development (IRD) and Centro de Atención y  
476 Diagnóstico de Enfermedades Infecciosas-Fundación INFOVIDA. The funders had no role in  
477 study design, data collection and interpretation, or decision to submit the work for publication.

478

479 **Conflict of interests**

480 The authors declare that they have no conflict of interest.

481

482 **Author contributions**

483 RMGR and LAV conceptualization. MIE, ATR, MPC and RMGR investigation. RMGR and MPC  
484 data curation. LAV, VMH, RMGR methodology. VMH formal analysis. RMGR, LAV, VMH and XDL  
485 writing and original draft preparation. RMGR, LAV, XDL, VMH, MIE and MPC writing and review  
486 & editing.

487

488 **References**

- 489 1. Espinal M, Andrus JK, Jauregui B, Hull Waterman S, Morens D, Santos JI, et al. Emerging  
490 and reemerging Aedes-transmitted arbovirus infections in the Region of the Americas:  
491 implications for health policy [Internet]. Pan American Journal of Public Health; 2019 [cited  
492 2023 Jun 26]. Available from: [https://www.paho.org/journal/en/articles/emerging-and-](https://www.paho.org/journal/en/articles/emerging-and-reemerging-aedes-transmitted-arbovirus-infections-region-americas)  
493 [reemerging-aedes-transmitted-arbovirus-infections-region-americas](https://www.paho.org/journal/en/articles/emerging-and-reemerging-aedes-transmitted-arbovirus-infections-region-americas)
- 494 2. Bhatt S, Gething PW, Brady OJ, Messina JP, Farlow AW, Moyes CL, et al. The global  
495 distribution and burden of dengue. Nature. 2013 Apr;496(7446):504–7.
- 496 3. WHO. Expansión geográfica de los casos de dengue y chikungunya más allá de las áreas  
497 históricas de transmisión en la Región de las Américas [Internet]. 2023 [cited 2023 Jun 20].  
498 Available from: <https://www.who.int/es/emergencias/disease-outbreak-news/2023-DON448>
- 499 4. Villar LA, Rojas DP, Besada-Lombana S, Sarti E. Epidemiological Trends of Dengue Disease  
500 in Colombia (2000-2011): A Systematic Review. PLoS Negl Trop Dis. 2015 Mar  
501 19;9(3):e0003499.
- 502 5. Instituto Nacional de Salud de Colombia. Alerta epidemiológica por dengue en Colombia  
503 [Internet]. 2023 [cited 2023 Jun 21]. Available from:  
504 <https://www.minsalud.gov.co/Paginas/Alerta-epidemiologica-por-dengue-en-Colombia.aspx>

- 505 6. Gutierrez Barbosa H, Medina-Moreno S, Zapata J, Chua J. Dengue Infections in Colombia:  
506 Epidemiological Trends of a Hyperendemic Country. *Trop Med Infect Dis*. 2020 Oct 5;5:156.
- 507 7. Acestor N, Cooksey R, Newton PN, Ménard D, Guerin PJ, Nakagawa J, et al. Mapping the  
508 Aetiology of Non-Malarial Febrile Illness in Southeast Asia through a Systematic Review—  
509 Terra Incognita Impairing Treatment Policies. *PLOS ONE*. 2012 Sep 6;7(9):e44269.
- 510 8. Chrispal A, Boorugu H, Gopinath KG, Chandy S, Prakash JAJ, Thomas EM, et al. Acute  
511 undifferentiated febrile illness in adult hospitalized patients: the disease spectrum and  
512 diagnostic predictors – an experience from a tertiary care hospital in South India. *Trop Doct*.  
513 2010 Oct 1;40(4):230–4.
- 514 9. Luvira V, Silachamroon U, Piyaphanee W, Lawpoolsri S, Chierakul W, Leungwutiwong P, et  
515 al. Etiologies of Acute Undifferentiated Febrile Illness in Bangkok, Thailand. *Am J Trop Med*  
516 *Hyg*. 2019 Jan 7;100(3):622–9.
- 517 10. Vaughn DW, Green S, Kalayanaroj S, Innis BL, Nimmannitya S, Suntayakorn S, et al.  
518 Dengue Viremia Titer, Antibody Response Pattern, and Virus Serotype Correlate with Disease  
519 Severity. *J Infect Dis*. 2000 Jan 1;181(1):2–9.
- 520 11. Moreira J, Bressan CS, Brasil P, Siqueira AM. Epidemiology of acute febrile illness in Latin  
521 America. *Clin Microbiol Infect Off Publ Eur Soc Clin Microbiol Infect Dis*. 2018 Aug;24(8):827–  
522 35.
- 523 12. WHO. Dengue guidelines, for diagnosis, treatment, prevention and control [Internet]. 2009  
524 [cited 2023 Jun 26]. Available from: <https://www.who.int/publications-detail-redirect/9789241547871>
- 525
- 526 13. CDC. Centers for Disease Control and Prevention. 2020 [cited 2023 Aug 29]. Dengue Testing  
527 Guidance | CDC. Available from: [https://www.cdc.gov/dengue/healthcare-  
528 providers/testing/testing-guidance.html](https://www.cdc.gov/dengue/healthcare-providers/testing/testing-guidance.html)
- 529 14. Chen H, Liu K, Li Z, Wang P. Point of Care Testing for Infectious Diseases. *Clin Chim Acta Int*  
530 *J Clin Chem*. 2019 Jun;493:138–47.

- 531 15. Kosack CS, Page AL, Klatser PR. A guide to aid the selection of diagnostic tests. Bull World  
532 Health Organ. 2017 Sep 1;95(9):639–45.
- 533 16. Land KJ, Boeras DI, Chen XS, Ramsay AR, Peeling RW. REASSURED diagnostics to inform  
534 disease control strategies, strengthen health systems and improve patient outcomes. Nat  
535 Microbiol. 2019 Jan;4(1):46–54.
- 536 17. WHO. Target product profile for readers of rapid diagnostic tests [Internet]. 2023 [cited 2023  
537 Jun 26]. Available from: <https://www.who.int/publications-detail-redirect/9789240067172>
- 538 18. Yow KS, Aik J, Tan EYM, Ng LC, Lai YL. Rapid diagnostic tests for the detection of recent  
539 dengue infections: An evaluation of six kits on clinical specimens. PLOS ONE. 2021 Apr  
540 1;16(4):e0249602.
- 541 19. Liu LT, Chen CH, Tsai CY, Lin PC, Hsu MC, Huang BY, et al. Evaluation of rapid diagnostic  
542 tests to detect dengue virus infections in Taiwan. PLOS ONE. 2020 Sep 29;15(9):e0239710.
- 543 20. Shukla MK, Singh N, Sharma RK, Barde PV. Utility of dengue NS1 antigen rapid diagnostic  
544 test for use in difficult to reach areas and its comparison with dengue NS1 ELISA and qRT-  
545 PCR. J Med Virol. 2017 Jul;89(7):1146–50.
- 546 21. OPS O. Dengue - Alerta Epidemiológica - OPS/OMS | Organización Panamericana de la  
547 Salud [Internet]. 2018 [cited 2023 Jun 27]. Available from:  
548 <https://www.paho.org/es/documentos/21-noviembre-2018-dengue-alerta-epidemiologica>
- 549 22. Leparc-Goffart I, Baragatti M, Temmam S, Tuiskunen A, Moureau G, Charrel R, et al.  
550 Development and validation of real-time one-step reverse transcription-PCR for the detection  
551 and typing of dengue viruses. J Clin Virol. 2009 May 1;45(1):61–6.
- 552 23. Waggoner JJ, Gresh L, Mohamed-Hadley A, Ballesteros G, Davila MJV, Tellez Y, et al. Single-  
553 Reaction Multiplex Reverse Transcription PCR for Detection of Zika, Chikungunya, and  
554 Dengue Viruses - Volume 22, Number 7—July 2016 - Emerging Infectious Diseases journal -  
555 CDC. 2016 [cited 2023 Jun 27]; Available from: [https://wwwnc.cdc.gov/eid/article/22/7/16-  
556 0326\\_article](https://wwwnc.cdc.gov/eid/article/22/7/16-0326_article)



- 557 24. Sullivan Pepe M. *The Statistical Evaluation of Medical Tests for Classification and Prediction*.  
558 Oxford University Press; 2003. 35–65 p.
- 559 25. Bours MJ. Bayes' rule in diagnosis. *J Clin Epidemiol*. 2021 Mar;131:158–60.
- 560 26. Simel DL, Samsa GP, Matchar DB. Likelihood ratios with confidence: Sample size estimation  
561 for diagnostic test studies. *J Clin Epidemiol*. 1991 Jan 1;44(8):763–70.
- 562 27. WHO. Pan American Health Organization / World Health Organization. 2022 [cited 2023 Jul  
563 3]. Boletín Anual Arbovirosis 2022 | OPS/OMS. Available from:  
564 [https://www3.paho.org/data/index.php/es/temas/indicadores-dengue/boletin-anual-](https://www3.paho.org/data/index.php/es/temas/indicadores-dengue/boletin-anual-arbovirosis-2022.html)  
565 [arbovirosis-2022.html](https://www3.paho.org/data/index.php/es/temas/indicadores-dengue/boletin-anual-arbovirosis-2022.html)
- 566 28. Gan VC, Tan LK, Lye DC, Pok KY, Mok SQ, Chua RCR, et al. Diagnosing Dengue at the  
567 Point-of-Care: Utility of a Rapid Combined Diagnostic Kit in Singapore. *PLoS ONE*. 2014 Mar  
568 19;9(3):e90037.
- 569 29. Vickers IE, Harvey KM, Brown MG, Nelson K, DuCasse MB, Lindo JF. The performance of  
570 the SD BIOLINE Dengue DUO® rapid immunochromatographic test kit for the detection of  
571 NS1 antigen, IgM and IgG antibodies during a dengue type 1 epidemic in Jamaica. *J Biomed*  
572 *Sci*. 2015 Jul 16;22(1):55.
- 573 30. Simonnet C, Okandze A, Matheus S, Djossou F, Nacher M, Mahamat A. Prospective  
574 evaluation of the SD BIOLINE Dengue Duo rapid test during a dengue virus epidemic. *Eur J*  
575 *Clin Microbiol Infect Dis*. 2017 Dec 1;36(12):2441–7.
- 576 31. Jang WS, Kwak SY, May WL, Yang DJ, Nam J, Lim CS. Comparative evaluation of three  
577 dengue duo rapid test kits to detect NS1, IgM, and IgG associated with acute dengue in  
578 children in Myanmar. *PLOS ONE*. 2019 Mar 13;14(3):e0213451.
- 579 32. Matusali G, Colavita F, Carletti F, Lalle E, Bordi L, Vairo F, et al. Performance of rapid tests in  
580 the management of dengue fever imported cases in Lazio, Italy 2014-2019. *Int J Infect Dis*.  
581 2020 Oct 1;99:193–8.



- 582 33. Andries AC, Duong V, Ngan C, Ong S, Huy R, Sroin KK, et al. Field Evaluation and Impact on  
583 Clinical Management of a Rapid Diagnostic Kit That Detects Dengue NS1, IgM and IgG. Farrar  
584 J, editor. PLoS Negl Trop Dis. 2012 Dec 27;6(12):e1993.
- 585 34. PAHO W. Dengue - PAHO/WHO | Pan American Health Organization [Internet]. 2020 [cited  
586 2023 Aug 23]. Available from: <https://www.paho.org/en/topics/dengue>
- 587 35. CDC. Centers for Disease Control and Prevention. 2019 [cited 2023 Aug 23]. Dengue Testing  
588 For Healthcare Providers | CDC. Available from: [https://www.cdc.gov/dengue/healthcare-  
589 providers/testing/index.html](https://www.cdc.gov/dengue/healthcare-providers/testing/index.html)
- 590 36. Instituto Nacional de Salud de Colombia. Boletín Epidemiológico Semanal-Semana  
591 Epidemiológica 52 del 2019. 2019.
- 592 37. PAHO W. Actualización Epidemiológica Dengue 07 Febrero 2020. 2020.
- 593 38. Thai KTD, Nishiura H, Hoang PL, Tran NTT, Phan GT, Le HQ, et al. Age-Specificity of Clinical  
594 Dengue during Primary and Secondary Infections. PLoS Negl Trop Dis. 2011 Jun  
595 21;5(6):e1180.
- 596 39. Peeling RW, Artsob H, Pelegriño JL, Buchy P, Cardoso MJ, Devi S, et al. Evaluation of  
597 diagnostic tests: dengue. Nat Rev Microbiol. 2010 Dec;8(12):S30–7.
- 598 40. Kabir MA, Zilouchian H, Younas MA, Asghar W. Dengue Detection: Advances in Diagnostic  
599 Tools from Conventional Technology to Point of Care. Biosensors. 2021 Jun 23;11(7):206.
- 600 41. Hu D, Di B, Ding X, Wang Y, Chen Y, Pan Y, et al. Kinetics of non-structural protein 1, IgM  
601 and IgG antibodies in dengue type 1 primary infection. Virol J. 2011 Feb 2;8(1):47.
- 602 42. Thomas L, Najjoullah F, Verlaeten O, Martial J, Briclher S, Kaidomar S, et al. Relationship  
603 between Nonstructural Protein 1 Detection and Plasma Virus Load in Dengue Patients. Am J  
604 Trop Med Hyg. 2010 Sep;83(3):696–9.
- 605 43. Duong V, Ly S, Lorn Try P, Tuiskunen A, Ong S, Chroeung N, et al. Clinical and virological  
606 factors influencing the performance of a NS1 antigen-capture assay and potential use as a  
607 marker of dengue disease severity. PLoS Negl Trop Dis. 2011 Jul;5(7):e1244.

- 608 44. Shu PY, Yang CF, Kao JF, Su CL, Chang SF, Lin CC, et al. Application of the Dengue Virus  
609 NS1 Antigen Rapid Test for On-Site Detection of Imported Dengue Cases at Airports. Clin  
610 Vaccine Immunol. 2009 Apr;16(4):589–91.
- 611 45. Pang JV, Chia PY, Lye D, Leo Y. Progress and Challenges Towards Point-of-Care Diagnostic  
612 Development for Dengue. J Clin Microbiol. 2017 Sep 13;55:JCM.00707-17.
- 613 46. Iani FC de M, Caetano ACB, Cocovich JCW, Amâncio FF, Pereira MA, Adelino TÉR, et al.  
614 Dengue diagnostics: serious inaccuracies are likely to occur if pre-analytical conditions are  
615 not strictly followed. Mem Inst Oswaldo Cruz. 2021;115:e200287.
- 616