

The impact of SARS-CoV-2 variants on the likelihood of children identified as sources of infection in the NIH workforce: a cohort study

Jessica M. van Loben Sels^{1,2,3}, Heike B. Bailin², Michael R. Bell², Jessica McCormick-Ell⁴, Sanchita Das⁵, Allison E. Roder⁶, Elodie Ghedin⁶, Michael McGann⁷, Amanda D. Castel³, D. Rebecca Prevots¹, Jennifer L. Kwan^{1*}

¹ Epidemiology and Population Studies Unit, Laboratory of Clinical Infectious Disease, Division of Intramural Research (DIR), National Institute of Allergy and Infectious Diseases (NIAID), National Institutes of Health (NIH), Bethesda, MD, USA.

² Occupational Medical Services, Division of Occupational Health and Safety, NIH Office of Research Services, Bethesda, MD, USA.

³ Department of Epidemiology, Milken Institute School of Public Health, The George Washington University, Washington DC, USA.

⁴ Division of Occupational Health and Safety, NIH Office of Research Services, NIH, Bethesda, MD, USA

⁵ Department of Laboratory Medicine, NIH, Bethesda, MD, USA.

⁶ Systems Genomics Section, Laboratory of Parasitic Diseases, NIAID, NIH, Rockville, MD, USA.

⁷ Clinical Center, NIH, Bethesda, MD, USA.

*Corresponding author at: 5601 Fishers Lane, Epidemiology Unit, Laboratory of Clinical Infectious Disease, NIH, Rockville, MD, USA.

E-mail addresses: Jennifer Kwan – Jennifer.kwan@nih.gov; D. Rebecca Prevots – rprevots@niaid.nih.gov; Amanda Castel – acastel@gwu.edu; Michael McGann – michael.mcgann@nih.gov; Allison Roder – Allison.roder@nih.gov; Elodie Ghedin – elodie.ghedin@nih.gov; Sanchita Das – sanchita.das@nih.gov; Jessica McCormick-Ell – jessica.mccormick-ell@nih.gov; Michael Bell – michael.bell2@nih.gov; Heike Bailin – heike.bailin@nih.gov; Jessica van Loben Sels – Jessica.vanlobensels@nih.gov.

Abstract

Background: Children (<18 years old) were not initially considered significant sources of infection (SOIs) for SARS-CoV-2. Risk mitigation strategies were thus prioritized for adults, and vaccination was inaccessible for children until mid-2021. Emergence of novel variants led to significant increases in COVID-19 cases in both children and adults. Whether these emergence events and increased vulnerability of unvaccinated children had a synergistic effect resulting in increased caseloads in adults requires further exploration.

Methods: A retrospective cohort study was conducted among 3,545 workers diagnosed with COVID-19. Case details were compiled during contact investigations. Variants of concern were identified following sequencing of biological samples collected through employer-based testing programs. Logistic regression was performed to compare the odds of having a child SOI based on the dominant variant in the workforce.

Results: One-fourth (24.5%) of the cohort reported having a child in-residence; 11.2% identified a child as their SOI. In Alpha-dominant months, the odds of having a child SOI were 0.3, and the child SOI was likely older (5-17 years old). The odds of having a child SOI increased to 1.3 and 2.2 in Delta- and Omicron-dominant months, respectively. The odds of having younger child SOIs (<5 years old) were significantly higher in Omicron-dominant months.

Conclusions: Children were highly likely to acquire the virus and posed a significant risk of transmission to their adult caretakers during Delta- and Omicron-dominant months. Without proper mitigation strategies in both the home and the workplace, child-associated transmission can threaten operations in the forms of staff shortages.

Keywords

COVID-19 pandemic, SARS-CoV-2, children, sources of infection, cohort study, variants of concern, occupational health

What is already known on this topic - Increases in transmission trends related to SARS-CoV-2 Variants of Concern have been documented in the literature at the population level and in workplaces.

What this study adds – This study looks more closely at the role that children played in transmission to adult workers, and therefore their potential to seed transmission outside of the home. This interface of transmission has been neglected in the literature but is key for future policy development.

How this study might affect research, practice, or policy - Transmission of SARS-CoV-2 from children to their caretakers may cause significantly increased odds of infection in a worker population. This may have second order effects for staffing, particularly in workgroups with employees of childbearing age. Employers should consider this in the design of their policies for continuity of operations, telework, and leave.

Background

Early in the pandemic, children under the age of 18 were generally considered low risk sources of infection (SOIs) for SARS-CoV-2 (1). Their period of illness was typically limited with rare severe cases warranting hospitalization (2, 3). Therefore, older individuals were prioritized for COVID-19 vaccination (4, 5) in an age hierarchy that reflected perceived risk of severe disease, transmission potential, and clinical trial timelines (6, 7) (Figure 1A).

In 2020 and the first 6 months of 2021, COVID-19 cases worldwide were predominantly caused by ancestral SARS-CoV-2 strains that later became dominated by the B.1.1.7 Alpha variant (Figure 1B) (8). This variant of concern (VOC) was displaced by the Delta variant in summer 2021 (9) and coincided with increases in adult vaccination (10), whereas children lagged behind. In the last months of 2021, the Omicron variant was dominant (11). Omicron continues to be the dominant VOC as of early-2023 and has resulted in predominantly symptomatic infections in all ages independent of vaccination status, though severity of illness was significantly decreased among vaccinees (12).

The National Institutes of Health (NIH) is a federal agency whose workforce was impacted by the SARS-CoV-2 pandemic and benefitted from onsite testing programs and in-depth, workplace contact tracing. All workers newly diagnosed with COVID-19 were assessed by the agency-based occupational medical service (OMS) to supplement local health departments and characterize workplace risk factors. One such risk was the workers' suspected source of infection (SOI). While SOIs could not be clearly established in all cases, 65% of workers with COVID-19 could identify a close contact with symptoms or a positive test predating their own positive test and/or symptom onset. The likely SOI's age and relationship to the worker were recorded during contact tracing interviews.

This study aimed to determine if increases in child SOI assignment by age (Figure 1C) were significant and if the emergence of new dominant VOCs contributed to increased transmission risk to staff. Such findings would refute the early assumptions that children were not at a high risk of contracting COVID-19 and therefore were not significant reservoirs for transmission.

Methods

Study Population

The target population of this study was adult caretakers of children, and the study population was the NIH workforce comprised of nearly 50,000 people with worksites in several locations across the United States (Supplementary Table 1). From March 2020 through February 2022, more than 4,500 workers with positive COVID-19 tests (i.e., cases) were reported. This retrospective cohort study included NIH workers who reported a positive COVID-19 test to OMS or tested positive through a workplace testing program. Those excluded were (1) positive cases originating from the NCI Frederick, MD, site which were investigated separately, and (2) patients at the NIH Clinical Center and their visitors (non-staff). After these exclusions, our study population comprised 3,545 NIH workers, a likely an underestimation of the total burden experienced by the NIH workforce due to the voluntary reporting of positive results from community-based or at-home testing.

Testing and laboratory procedures

The OMS received positive results through three testing mechanisms, as outlined in Figure 2. Workers were instructed to report any positive COVID-19 test conducted in the community through an online survey. Testing was also offered to staff via two programs: "for-cause" or asymptomatic based on risk assessment. The "for-cause" testing prioritized staff with recent symptom onset or high-risk exposure and sampled via a drive-through testing line. Nasopharyngeal or mid-turbinate nasal swabs were collected by qualified staff and prioritized for analysis by the NIH Clinical Center (CC) Department of Laboratory Medicine (DLM). This NIH-based mode of testing was offered only on the main campus in Bethesda,

MD. Conversely, all NIH sites had asymptomatic, surveillance-based testing programs established through which either mid-turbinate nasal swabs were collected by trained staff or saliva samples were self-collected. Healthcare personnel were strongly encouraged to test once a week until fully vaccinated. For all other workers, testing was at their discretion.

All NIH-based COVID-19 testing followed established protocols (13). Samples collected from the “for-cause” testing program were assayed individually by PCR, while samples collected from surveillance programs were pooled and deconvoluted if the pool tested positive for the SARS-CoV-2 RNA via PCR. Any result with a cycle threshold (Ct) value below 40 (a measure of viral load) was reported as a positive result to the OMS. For samples with Ct values under 30, RNA was extracted from the sample, reverse transcribed, and PCR-amplified using a modified version of the ARTIC protocol (14) which includes primers spanning the whole SARS-CoV-2 genome (15). Amplicons were sequenced via Illumina, and reads were assembled into a genome then compared to published genomes using Pangolin (16). All assembled genomes were submitted to GISAID. VOC designation followed the WHO naming system (17). Samples with Ct values higher than 30 could not be sequenced due to low viral loads.

Data collection and statistical analysis

Analysis was conducted using deidentified data that were collected for public health purposes thus exempted from IRB. Original data collection required consent of the employee in accordance with the OMS Privacy Act Notice and System of Records Notice which explained that samples could be used in research protocols in a deidentified manner.

As diagramed in Figure 2 and outlined in Supplementary Table 1, data were collected via self-reported electronic survey which requested demographic information (e.g., sex, weight, height, vaccination status, etc.) and reason for submitting the request: whether they suspected exposure, tested positive elsewhere or had symptoms. Staff reporting positive results were followed up by OMS-administered contact tracing interviews completed by telephone, collecting information: suspected source of infection, travel history, onsite presence, and other exposures. Medical histories and workplace COVID-19 testing records supplemented these data.

Each case was followed for the duration of their symptoms and until they met clearance criteria for returning to work, per evolving CDC recommendations. The following variables were extracted from open text fields in contact tracing reports: age and relationship of household members, suspected SOI, suspected SOI relationship, and travel history. Remaining variables were categorized by the contact tracer during interview.

Descriptive statistics were generated for unstratified data and data stratified by having a child in-residence (CIR) and having a child SOI. Continuous variables were categorized prior to analyses, and categorical variables were reported with frequencies and percentages. Logistic regression was used to assess the relationships of dominant VOCs to CIR and to child SOI by determining odds ratios (ORs), 95% confidence intervals (CIs), and significance ($p < 0.05$). Time-dependent variables were addressed in final model adjustment to avoid redundancy. All statistical analyses were conducted using SAS version 9.4.

Results

Characteristics of study population

From March 2020 to the end of February 2022, 3,545 cases were identified and met the criteria of our study (Table 1). One fourth of positive employees reported having a child in-residence (CIR, 25.1%), and less than half of CIR cases assigned the child as the likely SOI (11.2% of total cases, 41.8% of CIR cases). A higher percentage of men reported having a CIR (56.9%), but a higher percentage of women reported a child was their likely SOI (63.0%). Most CIR and child SOI cases were reported by workers aged 30 through 50 years (69.3% and 73.5%, respectively). About 67% of both CIR and child SOI cases were onsite during their POIs. Cases with CIR and child SOI cases were less likely to test positive

through asymptomatic testing (15.8% and 11.3%, respectively), and more CIR and child SOI cases were vaccinated at the time they tested positive (66.8% and 77.6%, respectively, versus 59.1% of cases overall). However, vaccination patterns changed significantly over time and were accounted for in our modeling.

Variables with significance against CIR or having a child SOI in either adjusted or unadjusted models are included in Supplementary Table 4. The ORs in the adjusted models are presented in Figure 3. Gender was significantly associated with a child SOI (female OR 1.7, p-value <0.0001), but not with CIR (female OR 1.1, p-value 0.3139). Workers ages 30- 59 were more likely than other age groups to have a CIR (OR 2.5-5.1, p-values <0.0001), and workers aged 30-49 years were significantly more likely than other age groups to report a child as their likely SOI (OR 2.2-3.0, p-values <0.05). Asymptomatic versus “for-cause” testing was not significantly associated with CIR cases, but child SOI cases were half as likely to test via asymptomatic testing than non-child SOI cases (OR 0.5, p-value 0.0001). The variables obesity, telework status, and vaccine type were negligible following model adjustment for both outcomes of interest. Finally, the odds of a child being assigned the likely SOI increased 3.4 times for each additional child reported living in the household (p-value <0.0001). All models were highly significant (p-values <0.0001).

Detection of variants of concern

In January 2021, a sequencing program was launched at the NIH to identify circulating VOCs in the workforce by sequencing positive samples collected by OMS. A subset of samples predating the start of this program were saved and used to characterize early circulating strains. Some samples were unable to be amplified with published primer sets (overall success generating amplicons 77.4%, Figure 4A). Sequencing following amplicon generation was 63.0% successful, and 37.0% of samples had at least 85% read alignment and were published to GISAID and the NCBI genome database.

The subset of successfully sequenced samples allowing for VOC assignment was plotted by month of positive test in Figure 4B and 4C. Due to the limited number of 2020 samples that could be sequenced, the dominant VOC assignment for cases in March to December 2020 was supplemented by community-published sequences, all of which were the ancestral/Alpha variant. Delta was first detected within the study population in May 2021 and became the dominant VOC in June 2021. Omicron emerged and displaced Delta in November 2021, but low levels of Delta were detected throughout the holiday surge of 2021-2022. A drop in VOC characterization in December 2021 and January 2022 occurred for the following reasons: (1) PCR-based testing couldn't meet increased testing demands, (2) sequencing efforts became deprioritized during surges, and (3) use of antigen-based testing increased. Therefore, dominant VOCs are aggregated monthly for analyses.

Regression analyses

The significance of VOC impact on CIR cases compared to child SOI cases was determined using logistic regression models (Supplementary Table 5) and adjusted for age, gender, and testing program of case (Figure 5A). Child SOI cases were additionally adjusted for number of CIR. Because vaccination status and VOC are both time-dependent, vaccination status was excluded from the models. All models were highly significant (p-values <0.0001).

All dominant VOCs were significantly associated with having a CIR and having a child SOI (p-values <0.05). In Alpha-dominant months, the OR for having a CIR was 0.6 times the odds of not having a CIR, significantly lower than the odds associated with Delta- and Omicron-dominant months (ORs 1.5 and 1.2, respectively). In Alpha-dominant months, the odds of having a child SOI were 0.3 times the odds of not having a child SOI, significantly lower than the odds associated with Delta- and Omicron-dominant months (ORs 1.3 and 2.2, respectively). Thus, the odds of identifying a child SOI were half the odds of having a CIR during Alpha-dominant months, the odds of CIR and child SOIs were identical during Delta-dominant months, and the likelihood of having a child SOI was higher than having a CIR in Omicron-dominant months.

Because different child age groups became eligible for vaccination at different times, the impact of dominant VOC and the age of child SOI was explored. Children were stratified into three groups - age <5 years, 5-11 years, and 12 to 17 years - and regression models with the same adjustments previously outlined were applied to the data (Figure 5B). The odds of children 5 to 17 years old being a likely SOI were twice as high as children less than 5 years old during Alpha-dominant months (ORs 0.4 and 0.2, respectively, p-values <0.0001). The odds between each age group during Delta-dominant months were not significantly different from each other (ORs 1.1-1.3, p-values not significant). During Omicron-dominant months, odds of children under 5 being identified as the SOI were 1.4 times as high as children 5 to 11 years of age (ORs 2.4 and 1.6, respectively, p-values <0.0001).

Discussion

We found that having a child in the household represented an important source of infection for workers during the Delta and Omicron surges as compared to the Alpha wave. We highlighted the significant burden of child SOI cases associated with female workers despite more male workers reporting a child residing at home (CIR). The SARS-CoV-2 pandemic worsened the gender gap in responsibilities related to household management and childcare, as indicated by loss of women in the workforce and their delay to return to work due to childcare needs (18). Higher odds of female workers having a likely child SOI might be explained by continued female-dominant childcare activities.

Alpha-dominant months of the COVID-19 pandemic severely impacted adults over 65 years of age (1, 4). This is consistent with our finding of low CIR during this time, as older workers were less likely to have a child below the age of 18 at home. Delta and Omicron did not appear to have the same age discrimination as their Alpha predecessor (2, 10, 19, 20), as younger workers began to be a significantly infected proportion of cases starting in mid-2021 (Supplementary Table 2). Therefore, the odds of a worker having a CIR increased during the Delta- and Omicron-dominant months.

The low child SOI odds in the early, Alpha-dominant months were likely impacted by several factors. First, research suggests that the Alpha variant may have been less virulent for children than the subsequent VOCs, resulting in more asymptomatic infections in children (1, 2, 20, 21). Second, because children were at lower risk of serious infection, testing was not as available to them early in the pandemic. Finally, children were much less likely to be exposed to the virus in the Alpha-dominant months because typical in-person activities (e.g., school, sports) were suspended until mid-2021, when Delta became the dominant VOC.

The rise in odds of having a child SOI correlated with emergence of the Delta variant, but increased travel and removal of strict mask mandates likely contributed to this trend. Loosening restrictions increased the risk of exposure among children relative to the risks during the Alpha-dominant months (22). Resumption of in-person schooling for children coincided with increased child-centric surveillance testing, which resulted in early and increased detection of prodromal and asymptomatic cases (23, 24). Increased testing likely amplified household awareness of infections. This social change would also explain why we estimated that school-aged children ages 5 to 17 comprised a higher burden of child SOI cases compared to children age <5 during that time.

Personal risk assessments during Omicron-dominant months likely influenced testing patterns, as at-home antigen testing became more available and popular. Negative results from these less sensitive antigen tests could skew SOI assignments (25, 26), especially for children that were difficult to sample, asymptomatic, or had low viral loads. Nevertheless, the risk the Omicron VOC posed to children and their adult caretakers is strongly reflected in these data. As Omicron continues to be the dominant VOC, risk posed to children and adult caretakers remain high. Future studies of surges can assess this ongoing risk.

Limitations of our interpretations are primarily due to self-report mechanisms and population of this study. Total case counts were likely impacted as some positive results were likely not reported to OMS, and workers may not have sought COVID-19 testing for vague, mild, or quickly resolving

symptoms. Self-report also likely impacted child SOI assignment likelihood, as workers may have believed their children could not transmit SARS-CoV-2 and failed to attribute the SOI to them, or they may not have noticed their children were symptomatic due to decreased awareness of their risk. Overestimation of child SOIs may have taken place if parents were more likely to attribute the SOI to a child than admit to risky behavior (e.g., traveling or attending a large event). Additionally, children with minor or no recognizable symptoms may not have enough viral load to be recognized by some testing mechanisms (27, 28) and thus may have brought the virus into the household undetected. Fewer CIR and child SOI cases would ultimately mean our results were based on underestimates of both conditions.

Remaining limitations were identified as missing data from both the study population and the sequencing data. Because SOI details were not explicitly asked on the survey, workers who were unresponsive during contact tracing could not provide SOI descriptions and were instead assigned a “community” SOI. Therefore, some “community” SOIs may instead be child SOIs, leading to an overall underestimation of this outcome. Additionally, about half of the cohort reported their first positive COVID-19 test was conducted outside of the NIH. Therefore, there was no biological sample available for sequencing. Thus, dominant VOCs over time were estimated using samples from less than half of the study population and could not be attributed directly to child SOI cases.

Despite these limitations, a cohort study of this size was essential to evaluate early assertions concerning COVID-19 risks both to and from children. This study determined that children were significant SOIs to workers as Delta and Omicron became dominant, which is important for risk assessment of all child caretakers. These data support the argument for prudent use of testing, vaccination, and masking precautions for children during community surges, as the findings underscore the impact of their infections on a workforce. Further, they inform human resource policy conducive to occupational risk management to prevent secondary workplace transmission. Overall, these findings serve as an updated assessment of the significant role of children in the transmission of SARS-CoV-2, which can be extended to other common airborne pathogens liable to impact workforces.

Abbreviations

Adj - adjusted
AZ – Arizona, USA
BMI – body mass index, = kilograms/meters²
CC – NIH clinical center
CDC – Centers for Disease Control and Prevention
CI – confidence interval
CIR – child(ren) in-residence
COVID-19 – Coronavirus disease 2019
Ct - cycle threshold, for PCR testing
DLM – Department of Laboratory Medicine
DIR - Division of Intramural Research
FDA – Food and Drug Administration
Group 0 – essential workers
Group A/B – non-essential, priority workers
Group C – teleworkers
IC – index case (NIH worker who reported a positive result)
MD – Maryland, USA
MT – Montana, USA
mRNA – messenger ribonucleic acid
NC – North Carolina, USA

NIAID – National Institutes of Allergy and Infectious Disease
NIH – National Institutes of Health
NIEHS – National Institute of Environmental Health Sciences, campus located in NC
NIDDK – National Institute of Diabetes and Digestive and Kidney Diseases, located in AZ
Ns – not significant, p-value >0.05
OMS – Office of Medical Safety
OR – odds ratio
PCR – polymerase chain reaction
POI – period of infectivity
Ref – reference group, for regression analyses
RML – Rocky Mountain Labs, campus located in MT
RWTG – return-to-work group, either Group 0, Group A, Group B, or Group C
SARS-CoV-2 – severe acute respiratory syndrome coronavirus 2
Sig. – significance, p-values <0.5*, <0.01**, <0.001***, <0.0001****
SOI – source of infection
TGrp – time group
UTD – up to date, defined as >14 days post-primary series OR >7 days post-booster dose
VOC – variant of concern

Human subjects

No human subjects were directly involved in this research. Consent of the participants was implied by return of the questionnaires and submission of biological samples for testing and sequencing as outlined in the Privacy Act Notice. All subjects were over the age of 18 at the time of sample and data collection.

Author contributions

JMvLS and JLK conceived the paper and analyzed the data. HBB and MRB aided in the acquisition and interpretation of the data. JME created and edited the privacy act notice, as well as provided funding for the COVID-19 case management system which supported the data and case result data. SD led the diagnostic testing and processing of the NIH-collected specimens. AER and EG led the sequencing and genomic analysis of the specimens. MM led the data capture and integrity team. JMvLS, JLK, HBB, MRB, ADC, and DRP contributed to writing and finalizing the manuscript. All authors contributed to the editing of the manuscript.

Acknowledgements

We would like to thank the tireless efforts of all the teams involved in the acquisition of data and samples, especially the workers at DLM/DTM and in Elodie Ghedin's lab for sequencing, and the OMS contact tracers including volunteers from Clinical Center Nursing Department and other NIH research and clinical staff, led by Meghan Murray, Chris Gagnon, Keith Baptiste, and Kathleen Morton. We thank those involved in the capture of health data and testing logistics at HIMD, especially Amanda Grove, Josanne Revoir, Tricia Coffey, and Jon McKeeby. Finally, we would like to thank those responsible for the data capture and integrity, especially Samantha Hughes, Courtney Bell and the OIIT team led by Judy Chan QA/QI/RM. The authors thank Yolanda L. Jones, NIH Library, for manuscript editing assistance.

Conflicts of interest

The authors have no conflict of interest.

Funding

This work was supported in part by the Division of Intramural Research (DIR) of the NIAID/NIH (EG, AER).

Table 1. Descriptive statistics for the study population, stratified by outcomes of interest. Data were generated three ways: (1) unstratified, (2) stratified by whether a child was living in the same household as the positive case (CIR), and (3) stratified by whether a child was determined to be the likely source of infection (SOI) for the positive NIH worker. Counts and percentages are reported for each stratum.

Variable	Cumulative	Child in-residence (CIR)		Child SOI	
		Yes	No	Yes	No
Total cases	3545 (100)	890 (25.1)	2675 (74.9)	400 (11.2)	3145 (88.8)
Sex					
Male	1722 (48.6)	495 (56.9)	1347 (50.4)	148 (37.0)	1574 (50.0)
Female	1823 (51.4)	375 (43.1)	1328 (49.6)	252 (63.0)	1571 (50.0)
Age of IC					
18-29	710 (20.0)	54 (6.2)	656 (24.5)	26 (6.5)	684 (21.8)
30-39	1015 (28.6)	303 (34.8)	712 (26.6)	138 (34.5)	877 (27.9)
40-49	761 (21.5)	300 (34.5)	461 (17.2)	156 (39.0)	605 (19.2)
50-59	648 (18.3)	164 (18.9)	484 (18.1)	64 (16.0)	584 (18.6)
60-69	346 (10.0)	43 (4.9)	303 (11.3)	14 (3.5)	332 (10.6)
≥70	52 (1.5)	6 (0.7)	46 (1.7)	2 (0.5)	50 (1.6)
Obese? (≥30 BMI)					
Yes	710 (20.0)	201 (23.1)	509 (19.0)	101 (25.2)	609 (19.4)
No	1646 (46.4)	394 (45.3)	1252 (46.8)	179 (44.8)	1467 (46.6)
No info	1189 (33.5)	275 (31.6)	914 (34.2)	120 (30.0)	1069 (34.0)
NIH site					
Main campus (MD)	2458 (69.3)	608 (69.9)	1850 (69.2)	288 (72.0)	2170 (69.0)
Satellite sites (MD)	825 (23.3)	205 (23.6)	620 (23.2)	84 (21.0)	741 (23.6)
NIEHS (NC)	138 (3.9)	24 (2.8)	114 (4.3)	6 (1.5)	132 (4.2)
RML (MT)	106 (3.0)	23 (2.6)	83 (3.1)	17 (4.3)	89 (2.8)
NIDDK (AZ)	18 (0.5)	10 (1.2)	8 (0.3)	5 (1.2)	13 (0.4)
Hire Type					
Fellow	571 (16.1)	63 (7.2)	508 (19.0)	38 (9.5)	533 (17.0)
Employee	1477 (41.7)	472 (54.3)	1005 (37.6)	224 (56.0)	1253 (39.8)
Contractor	1415 (39.9)	320 (36.8)	1095 (40.9)	132 (33.0)	1283 (40.8)
Other	82 (2.3)	15 (1.7)	67 (2.5)	6 (1.5)	76 (2.4)
Work Type (RTWG)					
Administration (C)	1043 (29.4)	295 (33.9)	748 (28.0)	116 (29.0)	927 (29.5)
Animal care (0)	295 (8.3)	54 (6.2)	241 (9.0)	23 (5.8)	272 (8.7)
Clinical (0)	441 (12.4)	158 (18.2)	283 (10.6)	89 (22.3)	352 (11.2)
Housekeeping (0)	102 (2.9)	26 (3.0)	76 (2.8)	7 (1.8)	95 (3.0)
Maintenance (0)	356 (10.0)	76 (8.7)	280 (10.5)	36 (9.0)	320 (10.2)
Research (A/B)	1084 (30.6)	208 (23.9)	876 (32.8)	109 (27.3)	975 (31.0)
Security (0)	156 (4.4)	37 (4.3)	119 (4.5)	15 (3.8)	141 (4.5)
Onsite during POI?					
Yes	2541 (71.7)	587 (67.5)	1954 (73.1)	267 (66.8)	2274 (72.3)
No	1004 (28.3)	283 (32.5)	721 (26.9)	133 (33.2)	871 (27.7)
Source of infection					
Community	1242 (35.0)	170 (19.5)	1072 (40.1)	3 (0.8)	1239 (39.4)
Household	1313 (37.0)	551 (63.3)	762 (28.5)	369 (92.3)	944 (30.0)
Non-household	400 (11.3)	60 (6.9)	340 (12.7)	28 (7.0)	372 (11.8)
Travel	308 (8.7)	51 (5.9)	257 (9.6)	0 (0.0)	308 (9.8)
SOI relationship					
Significant other	367 (10.4)	91 (10.5)	276 (10.3)	0 (0.0)	367 (11.7)
Parent	106 (3.0)	17 (2.0)	89 (3.3)	0 (0.0)	106 (3.4)
Child	452 (12.8)	351 (40.3)	101 (3.8)	341 (85.3)	111 (3.5)
Sibling	92 (2.6)	28 (3.2)	64 (2.4)	7 (1.8)	85 (2.7)
Extended family	127 (3.6)	57 (6.6)	70 (2.6)	39 (9.8)	88 (2.8)
Friend	269 (7.6)	22 (2.5)	247 (9.2)	2 (0.5)	267 (8.5)
Roommate	54 (1.5)	1 (0.1)	53 (2.0)	0 (0.0)	54 (1.7)
Coworker	214 (6.0)	29 (3.3)	185 (6.9)	0 (0.0)	214 (6.8)
Unknown/Other	1864 (52.5)	274 (31.5)	1565 (58.5)	11 (2.8)	1853 (58.9)
Age of SOI					
<18	400 (11.3)	364 (41.8)	36 (1.4)	400 (100)	0 (0.0)
18-29	242 (6.8)	51 (5.9)	191 (7.1)	0 (0.0)	242 (7.7)
30-39	245 (6.9)	58 (6.7)	187 (7.0)	0 (0.0)	245 (7.8)
40-49	191 (5.4)	45 (5.2)	146 (5.5)	0 (0.0)	191 (6.1)
50-59	185 (5.2)	39 (4.5)	146 (5.5)	0 (0.0)	185 (5.9)
60-69	79 (2.2)	12 (1.4)	67 (1.4)	0 (0.0)	79 (2.5)
≥70	36 (1.0)	6 (0.7)	30 (1.1)	0 (0.0)	36 (1.1)
Unknown	2167 (61.1)	295 (33.9)	1872 (70.0)	0 (0.0)	2167 (68.9)
Test program					
Car line/for cause	992 (28.0)	232 (26.7)	760 (28.4)	45 (11.3)	627 (19.9)
Asymptomatic	672 (19.0)	137 (15.8)	535 (20.0)	45 (11.3)	890 (28.3)
Community	1881 (53.0)	501 (57.6)	1380 (51.6)	253 (63.3)	1628 (51.8)
Ever symptomatic?					
No	271 (7.6)	56 (6.4)	215 (8.0)	25 (6.3)	246 (7.8)
Yes	3274 (92.4)	814 (93.6)	2460 (82.0)	375 (93.7)	2899 (92.2)
Recent travel history					
In-state	46 (1.3)	10 (1.2)	36 (1.4)	4 (1.0)	42 (1.3)
Out-of-state	664 (18.7)	149 (17.1)	515 (19.3)	56 (14.0)	608 (19.3)
International	107 (2.0)	26 (3.0)	81 (3.0)	8 (2.0)	99 (3.1)
None	2728 (77.0)	685 (78.7)	2043 (76.4)	332 (83.0)	2396 (76.2)
IC vaccinated?					
Yes, UTD	1063 (30.0)	314 (36.1)	749 (28.0)	166 (41.5)	897 (28.5)
Yes, partial	32 (1.0)	9 (1.0)	23 (0.9)	3 (0.8)	29 (0.9)
Yes, not UTD	997 (28.1)	258 (29.7)	739 (27.6)	141 (35.3)	856 (27.2)
Not vaccinated	1453 (41.0)	289 (33.2)	1164 (43.5)	90 (22.5)	1363 (43.3)
Vaccine type					
J&J	68 (1.9)	20 (2.3)	48 (1.8)	10 (2.5)	58 (1.8)
Moderna	946 (26.7)	264 (30.3)	682 (25.5)	143 (35.8)	803 (25.5)
Pfizer	1071 (30.2)	296 (34.0)	775 (29.0)	155 (38.8)	916 (29.1)

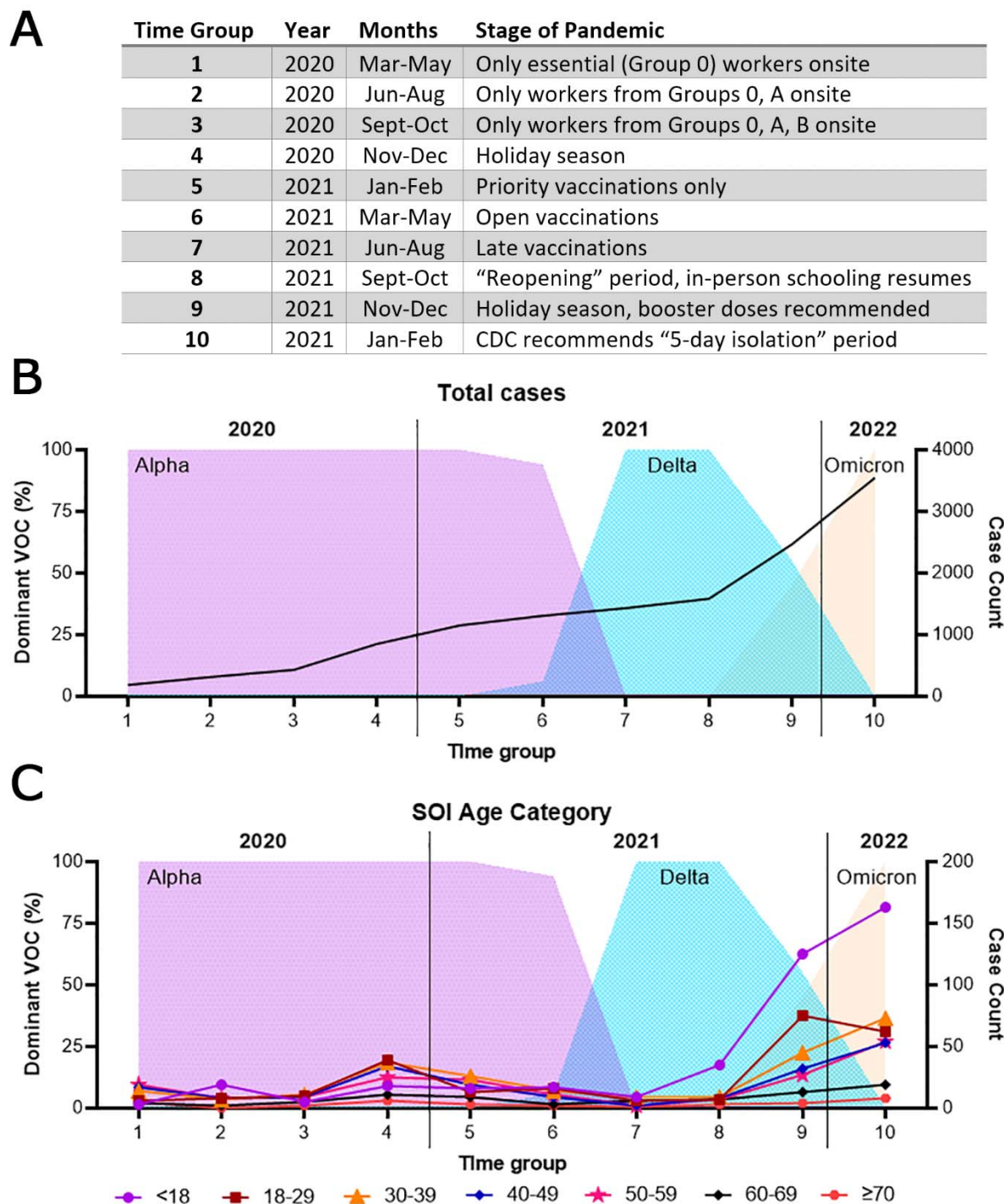


Figure 1. Reports of having a child be the likely source of infection increased disproportionately around the emergence of the Delta variant in the study population. A) Rationale used to group months together into time groups based on changes employed at the NIH or within the community that may affect case counts. B) Variants of concern detected within the NIH workforce, represented in time groups and as percentages of total samples sequenced, overlaid with cumulative NIH worker case counts. C) Variants of concern detected within the NIH workforce, represented in time groups and as percentages of total samples sequenced, overlaid with cumulative case counts stratified by SOI age categories.

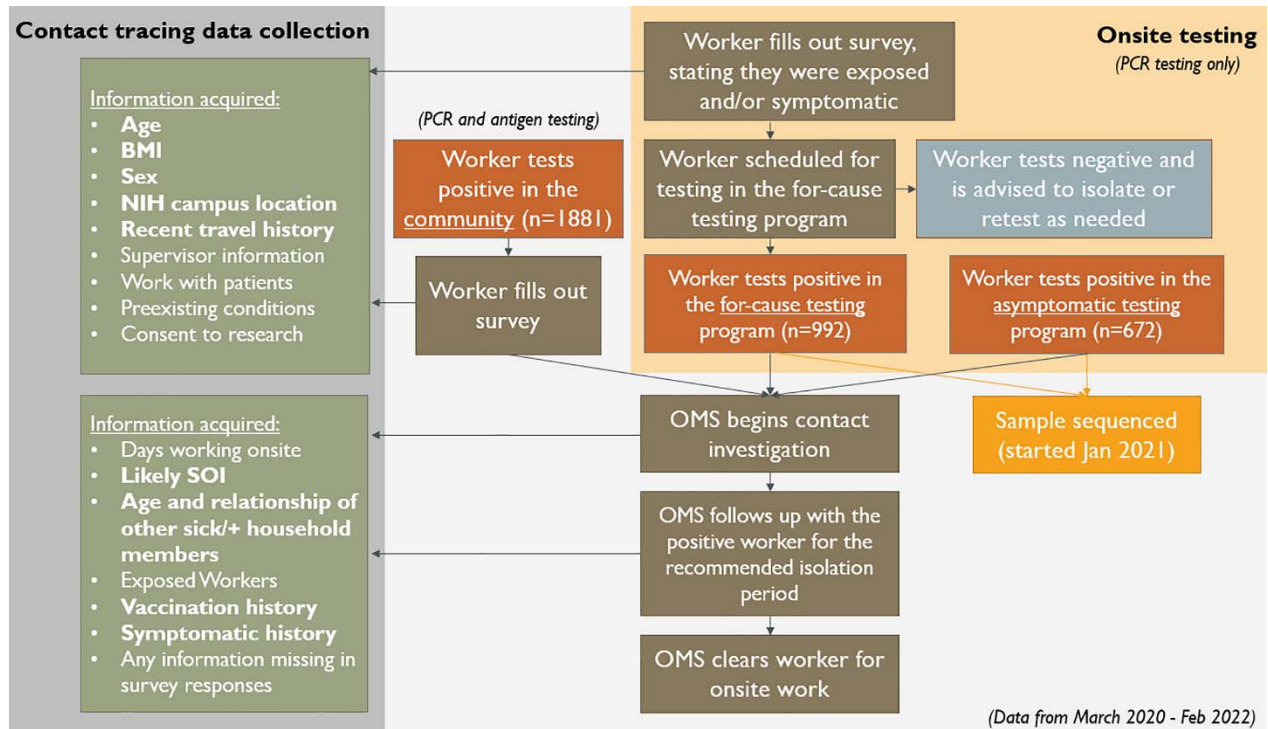


Figure 2. Diagram outlining sample and data collection processes through NIH-based and non-NIH-based, community testing programs.

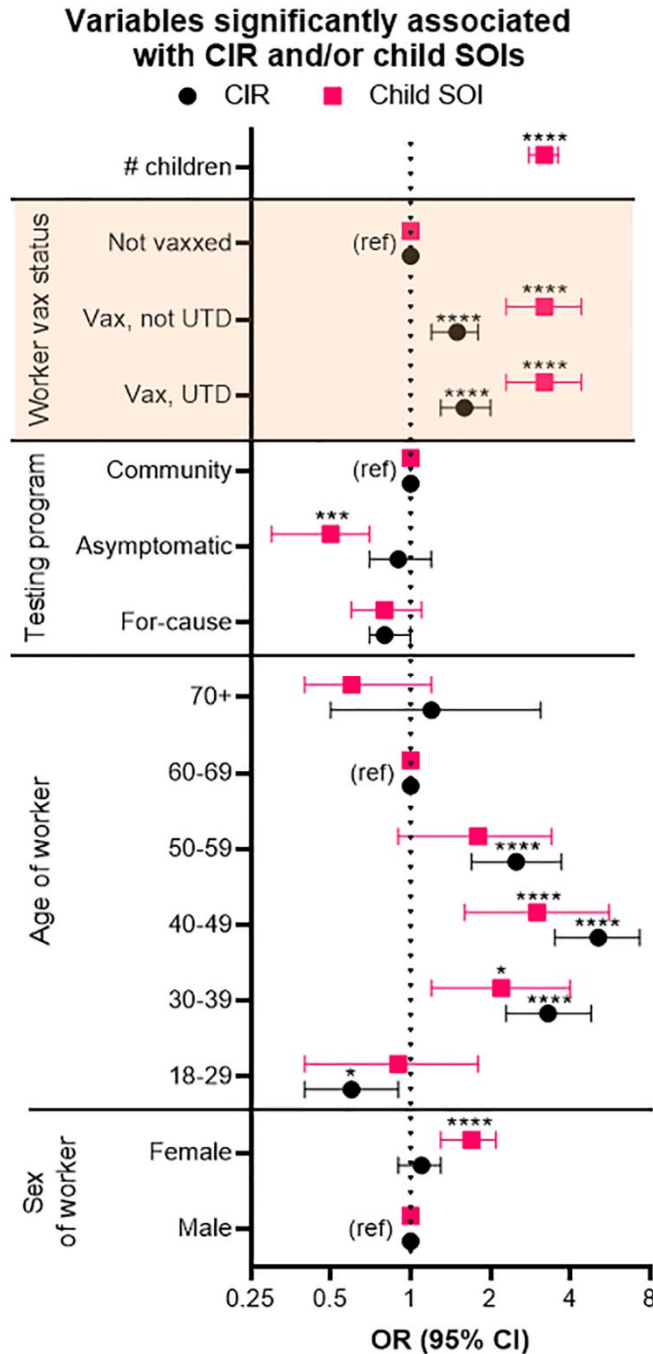


Figure 3. The age, sex, and vaccination status of the worker, the testing program utilized, and the number of children in the household were significantly associated with having a CIR and/or having a child SOI. Forest plot of variables found to be significantly associated with either outcome of interest following model adjustment for each variable. The outcomes of interest were either having a child in-residence (CIR) or identifying a child as the likely source of the worker’s infection (SOI). Odds ratios (ORs) were calculated based on a reference group in each stratum (ref). Odds ratios are represented with 95% confidence intervals (CIs), and p-value significance are denoted above using the following criteria: <math><0.5^*</math>, <math><0.01^{**}</math>, <math><0.001^{***}</math>, <math><0.0001^{****}</math>. Data highlighted in yellow are significantly influenced by time. Raw data from both adjusted and unadjusted models are reported in Supplementary Table 4.

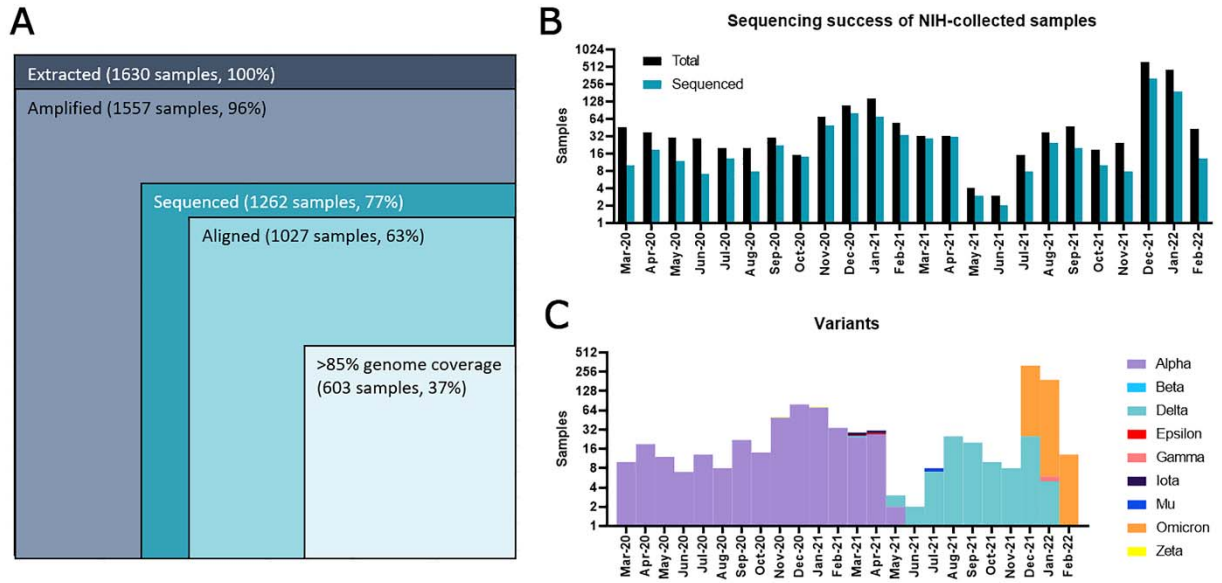


Figure 4. Samples collected through NIH-based testing programs were sequenced and displayed dominant VOC emergences and displacements within the study population. A) Diagram of sequencing procedure and success of each step in counts and percentages of the total NIH-collected sample set. **B)** Sample collection and sequencing and **C)** VOC counts of the successfully sequenced samples over time. VOC assignment followed WHO naming guidelines.

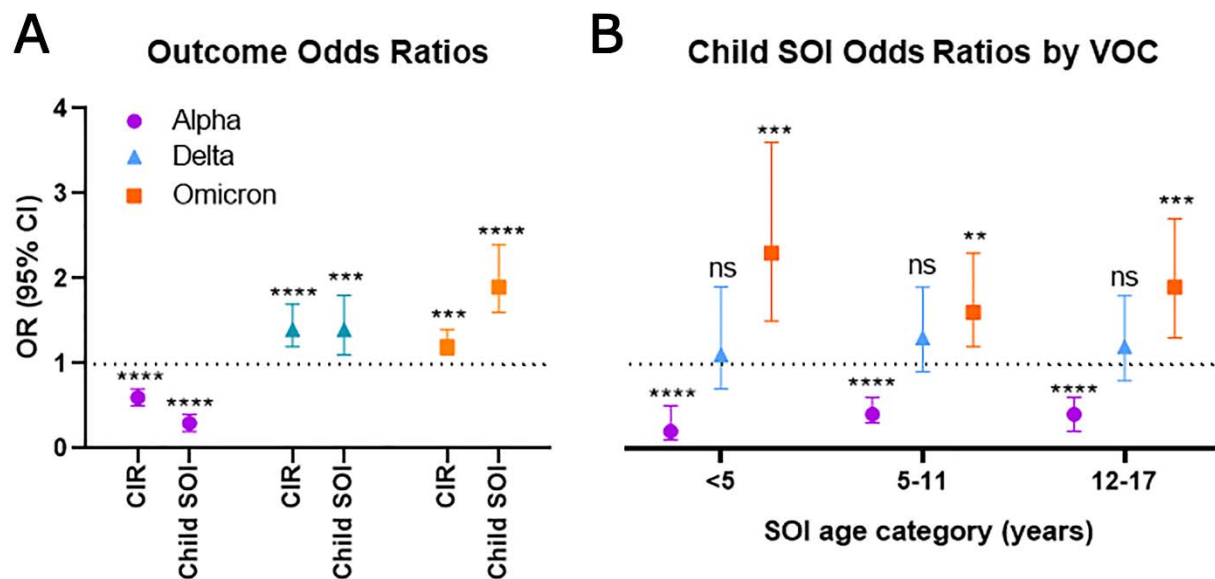


Figure 5. The outcomes of having a child in-residence (CIR) and having a child SOI, as well as the age of the child SOI, varied significantly with dominant VOC changes. A) Forest plot of VOC impact on odds ratios (ORs) of outcomes of interest following model adjustment for worker age, worker gender, and number of children in the household. B) Forest plot of ORs of child SOI age groups stratified by VOC, following model adjustment for worker age, worker gender, and number of children in the household. Odds ratios are represented with 95% confidence intervals (CIs), and p-value significance are denoted above using the following criteria: <math><0.5^*</math>, <math><0.01^{**}</math>, <math><0.001^{***}</math>, <math><0.0001^{****}</math>, ns-not significant. Raw data from both adjusted and unadjusted models are reported in Supplementary Table 5.

Supplementary Table 1. Variable categories, criteria, and extraction sources. The source(s) of data are included both in electronic records and who input the data into the records.

Variable	Criteria	Extracted from	Input by
Sex	Sex assigned at birth (male or female)	Survey, employment records	IC
Age of IC	Calculated based on date of birth	Survey, employment records	IC
Obese? (≥ 30 BMI)	Calculated based on weight and height	Survey	IC
NIH site	Where the IC's onsite office was located	Survey, employment records	IC
Hire Type	"Employee" was any full-time federal worker employed directly by NIH	Contact tracing records, employment records	Contact tracer
	"Contractor" was any full- or part-time worker employed by a non-NIH company		
	"Fellow" was any worker who had a temporary contract paid by NIH stipend, usually associated with a student, post-baccalaureate researcher, or post-doctoral researcher		
Work Type (RTWG)	"Other" included volunteers and tenants, otherwise known as workers who were not compensated for work onsite by NIH or any NIH-associated entity	Contact tracing records, employment records	Contact tracer
	"Return to work group" (RTWG) ordered by most essential to least essential designation - Group 0 "essential employees", Group A, Group B, Group DD "telework staff"		
	"Administration" was assigned to any worker who could complete their work 100% offsite, including administrators, secretaries, managers, record keepers, and IT staff (Groups B and DD)		
	"Animal care" included anyone who spent significant amounts of time caring for research animals onsite, but excluded researchers who worked with animals in an experimental setting (Group 0)		
	"Clinical" included anyone who worked with patients or carried out medical duties onsite, including doctors, nurses, pharmacists, and medical technicians (Group 0)		
Onsite during period of infectivity (POI)?	"Housekeeping" included any waste management and cleaning staff (Group 0)	Survey, contact tracing records	Contact tracer
	"Maintenance" included any maintenance and construction workers, and mechanical and electrical engineers (Group 0)		
	"Research" included principal investigators, staff scientists, post-doctoral researchers, graduate researchers, post-baccalaureate fellows, and students with temporary appointments (Groups A and B)		
	"Security" included police officers, firefighters, and security staff (Group 0)		
Source of infection (SOI)	"Yes" was entered for ICs who visited an NIH site in-person within 7 days prior to symptom onset, or within 5 days prior to a positive test result for asymptomatic cases	Contact tracing records	Contact tracer
	"Community" was entered for all cases who could not definitively point to an SOI or could only assign a likely exposure to an event and not a known ill person who was in close contact at the shared event. Travel-related events were excluded from this category.		
	"Household" was entered for ICs who had close contact with someone sharing their residence who had tested positive and/or showed symptoms before the IC became symptomatic and/or tested positive, which included visitors who stayed at least 24 hours in the same residence as the IC.		
	"Non-household" was entered for ICs had close contact with someone who was NOT sharing their residence who had tested positive and/or showed symptoms before the IC		
	"Travel" was assigned for ICs who reported travel within a week of symptom onset or a positive test result and could not point to a single person as having been the likely SOI.		
SOI relationship	"Workplace" was assigned to ICs who reported contact with an ill coworker or asymptomatic positive coworker within 5 days of the IC becoming symptomatic or testing positive. This designation was further divided based on details associated with employee contact tracing and viral sequencing into "Unlikely," "Possible," "Probable," and "Confirmed," but these subdivisions were not important to this study.	Contact tracing records	Contact tracer
	"Significant other" was assigned to SOIs who were spouses or partners who shared the same residence as the IC. SOIs who did NOT live with the IC were assigned as "friend."		
	"Parent" was assigned to SOIs who were parents and stepparents of the IC.		
	"Child" was assigned to SOIs who were children of the IC. NOTE: this designation can include adult children and does not imply the child was <18 years of age.		
	"Sibling" was assigned to SOIs who were siblings and stepsiblings of the IC.		
	"Extended family" was assigned to SOIs who were any relative outside of the IC's immediate family, including cousins, aunts, uncles, grandparents, grandchildren, parents-in-law, nieces, and nephews.		
	"Friend" was assigned to SOIs who were a close contact of the IC who was not related to them and did not live or work with them, such as neighbors, friends, and coworkers who exposed the IC outside of work.		
	"Roommate" was assigned to SOIs who lived with the IC but shared no familial relation.		
	"Coworker" was assigned to SOIs who were coworkers to the IC and exposed them to the virus while working onsite.		
	"Unknown/Other" included unknown SOIs, travel and community SOIs, and other SOI relationship designations such as nannies and babysitters.		

Age of SOI	Age of SOIs were provided by ICs if known. "Coworker" SOI ages were extracted from personnel files. "Unknown" was assigned to "Community" and "Travel" SOIs, and to SOIs whose ages were not provided by the IC.	Contact tracing records, employment records	Contact tracer
Test program	<p>Test program categorization was based on the initial test that resulted positive (i.e., if an IC tested positive with an at-home antigen test but was later confirmed by PCR via an NIH testing program, the categorization would be "Community").</p> <p>"Car line" testing was assigned to ICs who received their positive result through onsite, priority testing after an IC had reported a high-risk exposure event or the presence of COVID-19-related symptoms. PCR testing was conducted on single samples at the NIH, and samples were only collected via mid-turbinate nasal swabbing. Car line testing was only offered on the main campus in Bethesda, MD.</p> <p>"Asymptomatic" testing was assigned to ICs who received their positive result through onsite, surveillance screening. Ideally, the IC would be asymptomatic at the time of testing, but clinical staff would confirm the symptomatic state at the time of sampling and prioritize samples from symptomatic workers. Samples were collected either via mid-turbinate nasal swabbing administered by a registered nurse or via saliva sampling supervised by clinical staff. PCR testing was conducted on pooled samples at the NIH before deconvolution and single sample-based confirmation PCR. All NIH sites offered asymptomatic testing programs.</p> <p>"Community" testing was assigned to ICs who received their positive result through a non-NIH-based testing program, including at-home or hospital-administered antigen tests and outside laboratory PCR testing.</p>	Contact tracing records, COVID-19 test records	Contact tracer
Recent travel history	<p>Designations were made based on the travel history of the IC and/or SOI</p> <p>"In-state" was assigned to any case involving travel inside of the state of residence but did not involve any out-of-state or international travel.</p> <p>"Out-of-state" was assigned to any case involving travel outside of the state of residence but did not involve any international travel.</p> <p>"International" was assigned to any case involving travel outside of the US or US territories, including Puerto Rico and the USVI.</p>	Survey, contact tracing records	Contact tracer
Ever symptomatic?	ICs were followed for the duration of the quarantine period and reported to OMS staff of any changes in symptomatic status during this period.	Survey, contact tracing records, follow-up records	Follow-up team
IC vaccinated?	<p>"UTD" was assigned to ICs who were considered "up-to-date" with COVID-19 vaccination series, as defined by CDC guidelines, at the time they tested positive. This is defined as >14 days AND <6 months post-dose 1 for the one-dose vaccines/post-dose 2 for the two-dose vaccines OR >7 days post-booster dose.</p> <p>"Partial" was assigned to ICs who were vaccinated but had not yet completed their primary series at the time they tested positive. This is defined as <14 days post-dose 1 for the one-dose vaccines/post-dose 2 for the two-dose vaccines.</p> <p>"Not UTD" was assigned to ICs who had their primary COVID-19 vaccination series but were >6 months past their last dose at the time they tested positive.</p>	Survey, contact tracing records	Contact tracer
Vaccine type	Categorization was limited to FDA-approved manufacturers (i.e., the one-dose vaccine from Janssen (J&J) and the two-dose mRNA vaccines from Moderna and Pfizer). This designation was assigned based solely on the primary series to avoid needing to account for mismatch boosters.	Survey, contact tracing records	Contact tracer

Supplementary Table 2. Descriptive statistics for the study population, unstratified and stratified by time group (TGrp). Counts and percentages are reported for each stratum.

Variable	Cumulative TGrp	2020					2021					2022
		1	2	3	4	5	6	7	8	9	10	
Total cases	3544 (100)	185 (5.2)	130 (3.7)	115 (3.2)	423 (11.9)	298 (8.4)	157 (4.4)	125 (3.5)	151 (4.2)	884 (24.9)	1077 (30.4)	
Sex												
Male	1722 (48.6)	90 (48.7)	68 (52.3)	74 (64.6)	229 (54.1)	160 (53.7)	69 (44.0)	61 (48.8)	76 (50.3)	379 (42.9)	516 (47.9)	
Female	1823 (51.4)	95 (51.3)	62 (47.8)	41 (35.7)	194 (45.9)	138 (46.3)	88 (56.0)	64 (51.2)	75 (49.7)	505 (57.1)	561 (52.1)	
Age of IC												
18-29	710 (20.0)	24 (13.0)	25 (19.2)	25 (21.7)	79 (18.7)	58 (19.5)	28 (17.8)	28 (22.4)	21 (13.9)	206 (23.3)	216 (20.1)	
30-39	1015 (28.6)	38 (20.5)	33 (25.4)	33 (28.7)	113 (26.7)	81 (27.2)	47 (29.9)	36 (28.8)	42 (27.8)	275 (31.1)	317 (29.4)	
40-49	761 (21.5)	51 (27.6)	33 (25.4)	19 (16.5)	80 (18.9)	61 (20.5)	33 (21.0)	24 (19.2)	37 (24.5)	182 (20.6)	241 (22.4)	
50-59	648 (18.3)	48 (26.0)	24 (18.5)	27 (23.5)	81 (19.2)	54 (18.1)	28 (17.8)	18 (14.4)	23 (15.2)	156 (17.7)	189 (17.6)	
60-69	346 (10.0)	17 (9.2)	12 (9.2)	9 (7.8)	57 (13.5)	41 (13.8)	19 (12.1)	14 (11.2)	21 (13.9)	58 (6.6)	98 (9.1)	
≥70	52 (1.5)	4 (2.2)	2 (1.5)	2 (1.7)	11 (2.6)	2 (0.7)	2 (1.3)	3 (2.4)	7 (4.6)	6 (0.7)	13 (1.2)	
Obese? (≥30 BMI)												
Yes	710 (20.0)	50 (27.0)	45 (34.6)	24 (20.9)	98 (23.2)	70 (23.5)	36 (22.9)	15 (12.0)	40 (26.5)	159 (18.0)	173 (16.1)	
No	1646 (46.4)	68 (36.8)	66 (50.8)	58 (50.4)	202 (47.8)	122 (40.9)	64 (40.8)	63 (50.4)	59 (39.1)	412 (46.6)	532 (49.4)	
No info	1189 (33.5)	67 (36.2)	19 (14.6)	33 (28.7)	123 (29.1)	106 (35.6)	57 (36.3)	47 (37.6)	52 (34.4)	313 (35.4)	372 (34.5)	
NIH site												
Main campus (MD)	2458 (69.3)	127 (68.7)	88 (67.7)	77 (67.0)	243 (57.5)	185 (62.1)	90 (57.3)	84 (67.2)	95 (62.9)	661 (74.8)	808 (75.0)	
Satellite sites (MD)	825 (23.3)	57 (30.8)	35 (26.9)	29 (25.2)	137 (32.4)	91 (30.5)	55 (35.0)	32 (25.6)	36 (23.8)	196 (22.1)	157 (14.6)	
NIEHS (NC)	138 (3.9)	0 (0.0)	4 (3.1)	0 (0.0)	14 (3.3)	16 (5.4)	7 (4.5)	7 (5.6)	4 (2.7)	19 (2.2)	67 (6.2)	
RML (MT)	106 (3.0)	0 (0.0)	1 (0.8)	7 (6.1)	23 (5.4)	6 (2.0)	5 (3.2)	1 (0.8)	15 (9.9)	6 (0.7)	42 (3.9)	
NIDDK (AZ)	18 (0.5)	1 (0.5)	2 (1.5)	2 (1.7)	6 (1.4)	0 (0.0)	0 (0.0)	1 (0.8)	1 (0.7)	2 (0.2)	3 (0.3)	
Hire Type												
Fellow	571 (16.1)	7 (3.8)	11 (8.5)	14 (12.2)	51 (12.1)	44 (14.8)	21 (13.4)	15 (12.0)	17 (2.0)	154 (17.4)	237 (22.0)	
Employee	1477 (41.7)	70 (37.8)	43 (33.1)	32 (27.8)	173 (40.9)	110 (36.9)	73 (46.5)	60 (48.0)	67 (44.4)	381 (43.1)	468 (43.5)	
Contractor	1415 (39.9)	102 (55.1)	73 (56.2)	65 (56.5)	183 (43.3)	134 (45.0)	63 (40.1)	47 (37.6)	64 (42.4)	332 (37.6)	352 (32.7)	
Other	82 (2.3)	6 (3.2)	3 (2.3)	4 (3.5)	16 (3.8)	10 (3.4)	0 (0.0)	3 (2.4)	3 (2.0)	17 (1.9)	20 (1.9)	
Work Type (RTWG)												
Administration (C)	1043 (29.4)	70 (37.8)	57 (43.9)	32 (27.8)	159 (37.6)	105 (35.2)	68 (43.3)	48 (38.4)	42 (27.8)	258 (29.2)	204 (18.9)	
Animal care (0)	295 (8.3)	24 (13.0)	8 (6.2)	15 (13.0)	21 (5.0)	31 (10.4)	11 (7.0)	10 (8.0)	11 (7.3)	76 (8.6)	88 (8.2)	
Clinical (0)	441 (12.4)	6 (3.2)	7 (5.4)	6 (5.2)	23 (5.4)	16 (5.4)	12 (7.6)	15 (12.0)	22 (14.6)	148 (16.7)	186 (17.3)	
Housekeeping (0)	102 (2.9)	16 (8.7)	3 (2.3)	7 (6.1)	13 (3.1)	9 (3.0)	3 (1.9)	1 (0.8)	3 (2.0)	17 (1.9)	30 (2.8)	
Maintenance (0)	356 (10.0)	21 (11.4)	11 (8.5)	17 (14.8)	71 (16.8)	35 (11.7)	21 (13.4)	13 (10.4)	19 (12.6)	55 (6.2)	93 (8.6)	
Research (A/B)	1084 (30.6)	32 (17.3)	28 (21.5)	25 (21.7)	109 (25.8)	78 (26.2)	34 (21.7)	33 (26.4)	38 (25.2)	279 (31.6)	428 (39.7)	
Security (0)	156 (4.4)	13 (7.0)	7 (5.4)	5 (4.4)	21 (5.0)	13 (4.4)	8 (5.1)	4 (3.2)	13 (8.6)	36 (4.1)	36 (3.3)	
Onsite during POI?												
Yes	2541 (71.7)	122 (66.0)	71 (54.6)	90 (78.3)	273 (64.5)	192 (64.4)	95 (60.5)	82 (65.6)	112 (74.2)	695 (78.6)	809 (75.1)	
No	1004 (28.3)	63 (34.0)	59 (45.4)	20 (21.7)	150 (35.5)	106 (35.6)	62 (39.5)	43 (34.4)	39 (25.8)	189 (21.4)	268 (24.9)	
Source of infection												
Community	1242 (35.0)	85 (46.0)	56 (43.1)	38 (33.0)	146 (34.5)	122 (40.9)	65 (41.4)	47 (37.6)	49 (32.5)	312 (35.3)	322 (29.9)	
Household	1313 (37.0)	60 (32.4)	42 (32.3)	41 (35.7)	175 (41.4)	109 (36.6)	56 (35.7)	33 (26.4)	64 (42.4)	316 (35.8)	417 (38.7)	
Non-household	400 (11.3)	3 (1.6)	9 (6.9)	13 (11.3)	48 (11.4)	37 (12.4)	21 (13.4)	14 (11.2)	10 (6.6)	134 (15.2)	111 (10.3)	
Travel	308 (8.7)	6 (3.2)	13 (10.0)	9 (7.8)	30 (7.1)	22 (7.4)	10 (6.4)	31 (24.8)	18 (11.9)	52 (5.9)	117 (10.9)	
Workplace	282 (8.0)	31 (16.7)	10 (7.7)	14 (12.2)	24 (5.7)	8 (2.7)	5 (3.2)	0 (0.0)	10 (6.6)	70 (7.9)	110 (10.2)	
SOI relationship												
Significant other	367 (10.4)	25 (13.5)	16 (12.3)	22 (19.1)	51 (12.1)	48 (16.1)	21 (13.4)	12 (9.6)	16 (10.6)	57 (6.5)	99 (9.2)	
Parent	106 (3.0)	13 (7.0)	1 (0.8)	3 (2.6)	26 (6.15)	14 (4.7)	5 (3.2)	3 (2.4)	3 (2.0)	16 (1.8)	22 (2.0)	
Child	452 (12.8)	6 (3.2)	7 (5.4)	6 (5.2)	40 (9.5)	18 (6.0)	18 (11.5)	9 (7.2)	33 (21.9)	140 (15.8)	175 (16.3)	
Sibling	92 (2.6)	2 (1.1)	6 (4.6)	3 (2.6)	18 (4.3)	9 (3.0)	5 (3.2)	2 (1.6)	6 (4.0)	22 (2.5)	19 (1.8)	
Extended family	127 (3.6)	1 (0.5)	5 (3.9)	3 (2.6)	19 (4.5)	14 (4.7)	11 (7.0)	8 (6.4)	8 (5.3)	32 (3.6)	26 (2.4)	
Friend	269 (7.6)	1 (0.5)	8 (6.1)	8 (7.0)	38 (9.0)	17 (5.7)	7 (4.5)	11 (8.8)	3 (2.0)	94 (10.6)	84 (7.8)	
Roommate	54 (1.5)	3 (1.6)	3 (2.3)	2 (1.7)	7 (1.7)	3 (1.0)	5 (3.2)	1 (0.8)	1 (0.7)	12 (1.4)	17 (1.6)	
Coworker	214 (6.0)	24 (13.0)	7 (5.4)	14 (12.2)	17 (4.0)	6 (2.0)	3 (1.9)	0 (0.0)	8 (5.3)	51 (5.8)	84 (7.8)	
Unknown	1864 (52.5)	110 (59.4)	77 (59.2)	51 (44.4)	201 (47.5)	166 (55.7)	79 (50.3)	79 (63.2)	72 (47.7)	448 (50.7)	541 (50.2)	
Age of SOI												
<18	400 (11.3)	3 (1.6)	9 (6.9)	5 (4.4)	18 (4.3)	16 (5.4)	17 (10.8)	9 (7.2)	35 (23.2)	125 (14.1)	163 (15.1)	
18-29	242 (6.8)	6 (3.2)	8 (6.2)	10 (8.7)	39 (9.2)	13 (4.4)	16 (10.2)	6 (4.8)	7 (4.6)	75 (8.5)	62 (5.8)	
30-39	245 (6.9)	14 (7.6)	7 (5.4)	11 (9.6)	37 (8.8)	26 (8.7)	14 (8.9)	9 (7.2)	9 (6.0)	45 (5.1)	73 (6.8)	
40-49	191 (5.4)	17 (9.2)	8 (6.2)	9 (7.8)	34 (8.0)	19 (6.4)	9 (5.7)	2 (1.6)	8 (5.3)	32 (3.6)	53 (4.9)	
50-59	185 (5.2)	19 (10.3)	8 (6.2)	9 (7.8)	25 (5.9)	23 (7.7)	11 (7.0)	2 (1.6)	7 (4.6)	27 (3.1)	54 (5.0)	
60-69	79 (2.2)	4 (2.2)	2 (1.5)	5 (4.4)	11 (2.6)	9 (3.0)	3 (1.9)	6 (4.8)	7 (4.6)	13 (1.5)	19 (1.8)	
≥70	36 (1.0)	5 (2.7)	0 (0.0)	2 (1.7)	6 (1.9)	3 (1.0)	2 (1.3)	1 (0.8)	3 (2.0)	4 (0.5)	8 (0.7)	
Unknown	2167 (61.1)	117 (63.2)	88 (67.7)	64 (55.7)	251 (59.3)	189 (63.4)	85 (54.1)	90 (72.0)	75 (49.7)	563 (63.7)	645 (59.9)	
Child in household?												
No	2675 (75.5)	174 (94.1)	110 (84.6)	95 (82.6)	343 (81.1)	232 (77.9)	109 (69.4)	84 (67.2)	98 (64.9)	642 (72.6)	788 (73.2)	
Yes	870 (24.5)	11 (5.9)	20 (15.4)	20 (17.4)	80 (18.9)	66 (22.2)	48 (30.6)	41 (32.8)	53 (35.1)	242 (27.4)	289 (26.8)	
Ever symptomatic?												
No	271 (7.6)	5 (2.7)	8 (6.2)	7 (6.1)	19 (4.5)	16 (5.4)	13 (8.3)	4 (3.2)	7 (4.6)	74 (8.4)	118 (11.0)	
Yes	3274 (92.4)	180 (97.3)	122 (93.9)	108 (93.9)	404 (95.5)	282 (94.6)	144 (91.7)	121 (96.8)	144 (95.4)	810 (91.6)	959 (89.0)	
Recent travel history												
In-state	46 (1.3)	0 (0.0)	4 (3.1)	2 (1.7)	7 (1.7)	0 (0.0)	3 (1.9)	0 (0.0)	3 (2.0)	15 (1.8)	11 (1.0)	
Out-of-state	664 (18.7)	10 (5.4)	15 (11.5)	15 (13.0)	63 (14.9)	31 (10.4)	21 (13.4)	52 (41.6)	36 (23.8)	158 (17.9)	263 (24.4)	
International	107 (2.0)	3 (1.6)	2 (1.5)	3 (2.6)	4 (1.0)	7 (2.4)	7 (4.4)	12 (9.6)	7 (4.6)	14 (1.6)	48 (4.5)	
None	2728 (77.0)	172 (93.0)	109 (83.9)	95 (82.6)	349 (82.5)	260 (87.3)	126 (80.3)	61 (48.8)	105 (69.5)	696 (78.7)	755 (70.1)	
IC vaccinated?												
Yes, UTD	1063 (30.0)	0 (0.0)	0 (0.0)	0 (0.0)	0 (0.0)	0 (0.0)	8 (5.1)	66 (52.8)	47 (31.1)	331 (37.4)	611 (56.7)	
Yes, partial	32 (1.0)	0 (0.0)	0 (0.0)	0 (0.0)	0 (0.0)	6 (2.0)	15 (9.6)	2 (1.6)	1 (0.7)	5 (0.6)	3 (0.3)	
Yes, not UTD	997 (28.1)	0 (0.0)	0 (0.0)	0 (0.0)	0 (0.0)	0 (0.0)	10 (6.4)	13 (10.4)	61 (40.4)	331 (37.4)	420 (39)	
Not vaccinated	1453 (41.0)	185 (100)	130 (100)	115 (100)	423 (100)	292 (98.0)	124 (79.0)	44 (35.2)	42 (27.8)	55 (6.2)	43 (4.0)	
Vaccine type												
J&J	68 (1.9)	NA	NA	NA	NA	0 (0.0)	0 (0.0)	4 (3.2)	6 (4.0)	29 (3.3)	29 (2.7)	
Moderna	946 (26.7)	NA	NA	NA	NA	6 (2.0)	18 (11.5)	32 (25.6)	46 (30.5)	350 (39.6)	494 (45.9)	
Pfizer	1071 (30.2)	NA	NA	NA	NA	0 (0.0)	15 (9.6)	45 (36.0)	57 (37.8)	449 (50.8)	505 (46.9)	

Supplementary Table 3. Descriptive statistics for the study population stratified by SOI age categories and child SOI age groups. Counts and percentages are reported for each stratum.

Variable	Unknown	All SOI age groups							Child SOI age groups		
		<17	18-29	30-39	40-49	50-59	60-69	>70	<5	5-11	12-17
Total cases	2167 (61.1)	400 (11.2)	242 (6.8)	245 (6.9)	191 (5.3)	185 (5.2)	79 (2.2)	36 (1.0)	95 (2.7)	155 (4.4)	150 (4.2)
Sex											
Male	1107 (51.1)	148 (37.0)	113 (46.7)	113 (46.1)	92 (48.2)	92 (49.7)	41 (51.9)	16 (44.4)	36 (37.9)	59 (38.1)	53 (35.3)
Female	1060 (48.9)	252 (63.0)	129 (53.3)	132 (53.9)	99 (51.8)	93 (50.3)	38 (48.1)	20 (55.6)	59 (62.1)	96 (61.9)	97 (64.7)
Age of IC											
18-29	496 (22.9)	26 (6.5)	100 (41.3)	23 (9.4)	47 (24.6)	9 (4.9)	8 (10.1)	1 (2.8)	8 (8.4)	8 (5.2)	10 (6.7)
30-39	626 (28.9)	138 (34.5)	46 (19.0)	132 (53.9)	20 (10.5)	42 (22.7)	7 (8.9)	4 (11.1)	58 (61.1)	67 (43.2)	13 (8.7)
40-49	426 (19.66)	156 (39.0)	15 (6.2)	39 (15.9)	83 (43.5)	24 (13.0)	13 (16.5)	5 (13.9)	25 (26.3)	58 (37.4)	73 (48.7)
50-59	369 (17.0)	64 (16.0)	55 (22.7)	22 (9.0)	26 (13.6)	85 (46.0)	11 (13.9)	16 (44.4)	2 (2.1)	18 (11.6)	44 (29.3)
60-69	198 (9.1)	14 (3.5)	26 (10.7)	26 (10.6)	12 (6.3)	25 (13.5)	38 (48.1)	7 (19.4)	0 (0.0)	4 (2.6)	10 (6.7)
≥70	40 (1.9)	2 (0.5)	0 (0.0)	3 (1.2)	3 (1.6)	0 (0.0)	1 (1.3)	3 (8.3)	2 (2.1)	0 (0.0)	0 (0.0)
Work Type (RTWG)											
Administration (C)	638 (29.4)	116 (29.0)	63 (26.0)	73 (29.8)	58 (30.4)	63 (34.1)	18 (22.8)	14 (38.9)	19 (20.0)	48 (31.0)	49 (32.7)
Animal care (0)	171 (7.9)	23 (5.8)	35 (14.5)	25 (10.2)	15 (7.9)	19 (10.3)	6 (7.6)	1 (2.8)	5 (5.3)	10 (6.5)	8 (5.3)
Clinical (0)	234 (10.8)	89 (22.3)	22 (9.1)	33 (13.5)	20 (10.5)	27 (14.6)	8 (10.1)	8 (22.2)	23 (24.2)	38 (24.5)	28 (18.7)
Housekeeping (0)	58 (2.7)	7 (1.8)	9 (3.7)	7 (2.9)	9 (4.7)	7 (3.8)	4 (5.1)	1 (2.8)	1 (1.1)	1 (0.7)	5 (3.3)
Maintenance (0)	196 (9.0)	36 (9.0)	22 (9.1)	27 (11.0)	21 (11.0)	26 (14.1)	23 (29.1)	5 (13.9)	5 (5.3)	14 (9.0)	17 (11.3)
Research (A/B)	726 (33.5)	109 (27.3)	80 (33.1)	64 (26.1)	49 (25.7)	31 (16.7)	18 (22.8)	7 (19.4)	36 (37.9)	37 (23.9)	36 (24.0)
Security (0)	98 (4.5)	15 (3.8)	7 (2.9)	10 (4.1)	14 (7.3)	11 (6.0)	1 (1.3)	0 (0.0)	5 (5.3)	4 (2.6)	6 (4.0)
SOI relationship											
Significant other	0 (0.0)	0 (0.0)	51 (21.1)	124 (50.6)	76 (38.8)	81 (43.8)	32 (40.5)	3 (8.3)	0 (0.0)	0 (0.0)	0 (0.0)
Parent	0 (0.0)	0 (0.0)	0 (0.0)	1 (0.4)	42 (22.0)	32 (17.3)	11 (13.9)	20 (55.6)	0 (0.0)	0 (0.0)	0 (0.0)
Child	2 (0.1)	341 (85.3)	74 (30.6)	29 (11.8)	6 (3.1)	0 (0.0)	0 (0.0)	0 (0.0)	91 (95.8)	126 (81.3)	124 (82.7)
Sibling	0 (0.0)	7 (1.8)	39 (16.1)	19 (7.8)	15 (7.9)	10 (5.4)	2 (2.5)	0 (0.0)	0 (0.0)	1 (0.7)	6 (4.0)
Extended family	9 (0.4)	39 (9.8)	18 (7.4)	17 (6.9)	11 (5.8)	16 (8.7)	10 (12.7)	7 (19.4)	4 (4.2)	20 (12.9)	15 (10.0)
Friend	260 (12.0)	2 (0.5)	1 (0.4)	3 (1.2)	1 (0.5)	2 (1.1)	0 (0.0)	0 (0.0)	0 (0.0)	1 (0.7)	1 (0.7)
Roommate	30 (1.4)	0 (0.0)	16 (6.6)	5 (2.0)	1 (0.5)	1 (0.5)	1 (1.3)	0 (0.0)	0 (0.0)	0 (0.0)	0 (0.0)
Coworker	22 (1.0)	0 (0.0)	40 (16.5)	45 (18.4)	37 (19.4)	43 (23.2)	23 (29.1)	4 (11.1)	0 (0.0)	0 (0.0)	0 (0.0)
Other	1822 (84.1)	11 (2.8)	3 (1.2)	2 (0.8)	2 (1.1)	0 (0.0)	0 (0.0)	2 (5.6)	0 (0.0)	7 (4.5)	4 (2.7)
Recent travel history											
In-state	37 (1.7)	4 (1.0)	0 (0.0)	0 (0.0)	1 (0.5)	2 (1.1)	1 (1.3)	1 (2.8)	0 (0.0)	2 (1.3)	2 (1.3)
Out-of-state	458 (21.1)	56 (14.0)	41 (16.9)	27 (11.0)	29 (15.2)	29 (15.7)	17 (21.5)	7 (19.4)	12 (12.6)	22 (14.2)	22 (14.7)
International	77 (3.6)	8 (2.0)	4 (1.7)	7 (2.9)	2 (1.1)	4 (2.2)	4 (5.1)	1 (2.8)	6 (6.3)	2 (1.3)	0 (0.0)
None	1595 (73.6)	332 (83.0)	197 (81.4)	211 (86.1)	159 (83.3)	150 (81.1)	57 (72.2)	27 (75.0)	77 (81.1)	129 (83.2)	126 (84.0)
IC vaccinated?											
Yes, UTD	644 (29.7)	166 (41.5)	69 (28.5)	68 (27.8)	44 (23.0)	45 (24.3)	20 (25.3)	7 (19.4)	42 (44.2)	60 (38.7)	64 (42.7)
Yes, partial	18 (0.8)	3 (0.8)	2 (0.8)	4 (1.6)	1 (0.5)	3 (1.6)	1 (1.3)	0 (0.0)	0 (0.0)	2 (1.3)	1 (0.7)
Yes, not UTD	625 (28.8)	141 (35.3)	76 (31.4)	56 (22.9)	41 (21.5)	35 (18.9)	16 (20.3)	7 (29.4)	36 (37.9)	54 (34.8)	51 (34.0)
Not vaccinated	880 (40.6)	90 (22.5)	95 (39.3)	117 (47.8)	105 (55.0)	102 (55.1)	42 (53.2)	22 (61.1)	17 (17.9)	39 (25.2)	34 (22.7)
Vaccine type											
J&J	40 (1.9)	10 (2.5)	4 (1.7)	6 (2.5)	4 (2.1)	0 (0.0)	3 (3.8)	1 (2.8)	1 (1.1)	6 (3.9)	3 (2.0)
Moderna	561 (25.9)	143 (35.8)	65 (26.9)	69 (28.2)	40 (20.9)	47 (25.4)	14 (17.7)	7 (19.4)	41 (43.2)	43 (27.7)	59 (39.3)
Pfizer	681 (31.4)	155 (38.8)	78 (32.2)	53 (21.6)	42 (22.0)	36 (19.5)	20 (25.3)	6 (16.7)	36 (37.9)	66 (42.6)	53 (35.3)

Supplementary Table 4. Variables significantly associated with either having a child living with a positive NIH worker (CIR) and/or having a child be the source of their infection (SOI). Odds ratios (OR) and 95% confidence intervals (CIs) were calculated in both unadjusted and adjusted (Adj) logistic regression models relative to a reference group (ref). P-values were reported for each OR and denoted for significance, p-values <0.5*, <0.01**, <0.001***, <0.0001****. Missing data were denoted with “NA.” P-values that were not significant were denoted with “ns.”

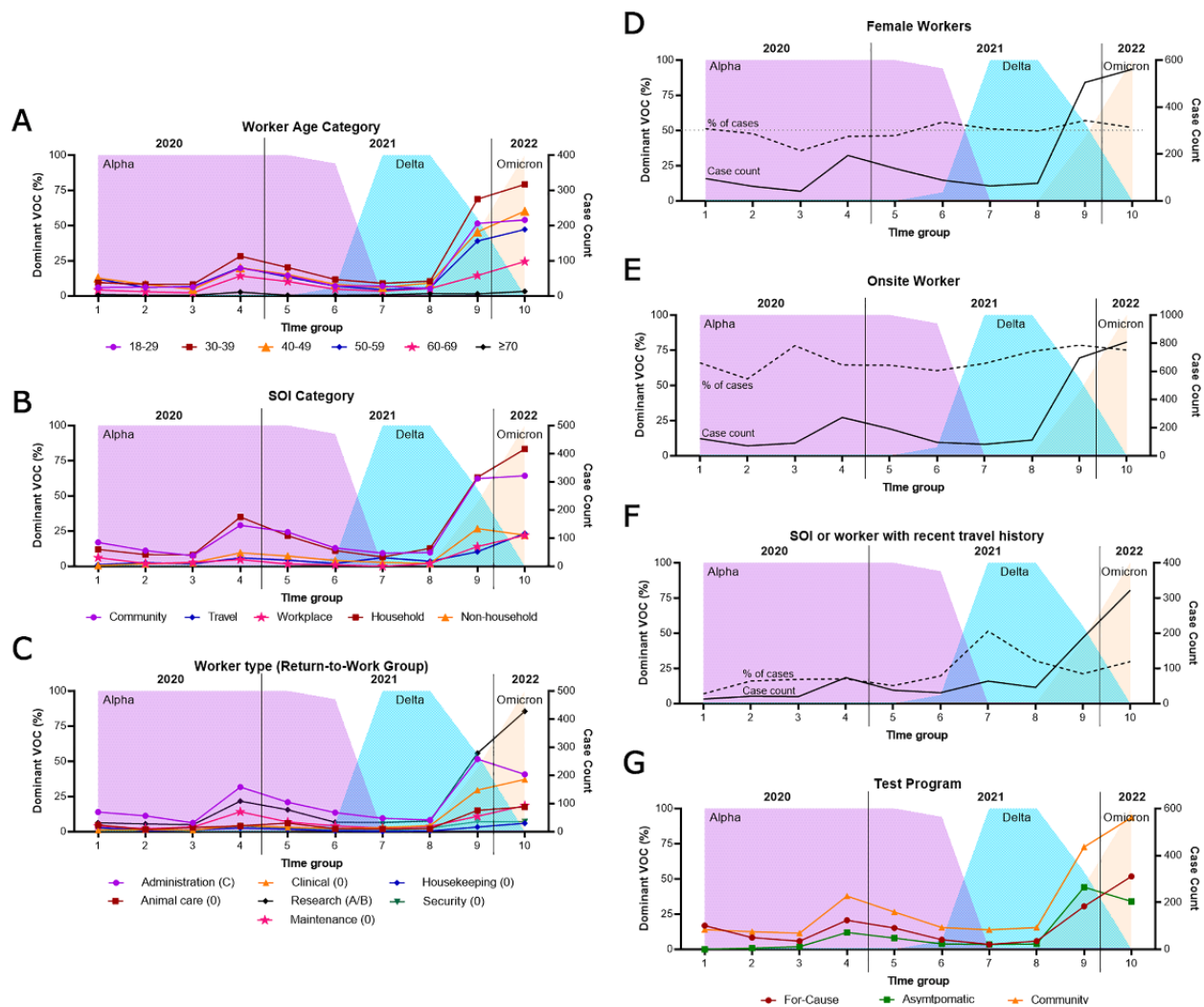
Variable	Child-in-residence (CIR) cases (all SOI's)						CIR, Child SOI cases					
	OR (95% CI)	P value	Sig.	Adj OR (95% CI)	P value	Sig.	OR (95% CI)	P value	Sig.	Adj OR (95% CI)	P value	Sig.
Age of NIH worker												
18-29	0.6 (0.3-1.5)	0.3134	ns	0.7 (0.3-1.6)	0.3670	ns	1.0 (0.2-4.1)	0.9457	ns	1.3 (0.2-8.7)	0.7783	ns
30-39	3.3 (1.4-7.7)	0.0071	**	3.2 (1.3-7.6)	0.0099	**	3.9 (1.0-16.4)	0.0595	ns	3.3 (0.5-21.1)	0.2080	ns
40-49	5.0 (2.1-11.8)	0.0003	***	4.9 (2.1-11.9)	0.0004	***	6.5 (1.6-26.8)	0.0103	*	4.6 (0.7-29.2)	0.1095	ns
50-59	2.6 (1.1-6.2)	0.0313	*	2.5 (1.0-6.1)	0.0412	*	2.7 (0.7-11.5)	0.1692	ns	2.7 (0.4-17.7)	0.2915	ns
60-69	1.1 (0.4-2.7)	0.8556	ns	1.0 (0.4-2.5)	0.9970	ns	1.1 (0.2-4.8)	0.9454	ns	1.5 (0.2-10.2)	0.6886	ns
≥70	1.0 (ref)	0.9627	ns	1.0 (ref)			1.0 (ref)			1.0 (ref)		
Obese? (≥30 BMI)												
No	1.0 (ref)			1.0 (ref)			1.0 (ref)			1.0 (ref)		
Yes	1.3 (1.0-1.5)	0.0251	*	1.2 (0.9-1.4)	0.1789	ns	1.4 (1.0-1.8)	0.0213	*	1.2 (0.9-1.7)	0.2547	ns
Sex												
Male	1.0 (ref)			1.0 (ref)			1.0 (ref)			1.0 (ref)		
Female	1.4 (1.1-1.6)	0.0002	***	1.2 (1.0-1.5)	0.0185	*	1.7 (1.4-2.1)	<0.0001	****	1.8 (1.4-2.3)	<0.0001	****
Work Type												
Administration	1.3 (0.7-2.3)	0.3986	ns	1.1 (0.6-2.0)	0.7910	ns	1.6 (0.6-4.0)	0.3377	ns	1.3 (0.5-3.9)	0.5847	ns
Animal care	0.7 (0.4-1.4)	0.3263	ns	0.7 (0.3-1.3)	0.2556	ns	1.1 (0.4-2.9)	0.9016	ns	0.9 (0.3-2.7)	0.7893	ns
Clinical	1.8 (1.0-3.3)	0.0490	*	1.2 (0.6-2.3)	0.5617	ns	3.2 (1.2-8.2)	0.0157	*	1.5 (0.5-4.5)	0.4270	ns
Housekeeping	1.1 (0.5-2.3)	0.7716	ns	1.1 (0.5-2.4)	0.7479	ns	1.0 (0.3-3.1)	0.9027	ns	0.6 (0.2-2.5)	0.5084	ns
Maintenance	0.9 (0.5-1.6)	0.6894	ns	0.9 (0.5-1.7)	0.6876	ns	1.4 (0.5-3.8)	0.4825	ns	1.9 (0.6-5.8)	0.2563	ns
Research	0.8 (0.4-1.4)	0.3814	ns	0.8 (0.4-1.7)	0.4535	ns	1.4 (0.6-3.6)	0.4712	ns	1.6 (0.5-4.5)	0.4135	ns
Security	1.0 (0.5-2.0)	0.9756	ns	0.8 (0.4-1.7)	0.5644	ns	1.3 (0.5-3.8)	0.5862	ns	1.0 (0.3-3.3)	0.9689	ns
Recent travel												
No	1.0 (ref)			1.0 (ref)			1.0 (ref)			1.0 (ref)		
Yes	0.9 (0.7-1.0)	0.0908	ns	0.9 (0.7-1.1)	0.1365	ns	0.7 (0.5-0.9)	0.0030	**	0.6 (0.5-0.8)	0.0028	**
IC vaccinated?												
Yes, partial	1.6 (0.7-3.4)	0.2539	ns	1.2 (0.5-1.7)	0.7478	ns	1.6 (0.5-5.2)	0.4663	ns	1.1 (0.3-4.7)	0.8758	ns
Yes, UTD	1.7 (1.4-2.0)	<0.0001	****	1.1 (0.7-1.5)	0.7638	ns	2.8 (2.4-3.7)	<0.0001	****	1.5 (0.8-2.8)	0.1580	ns
Yes, not UTD	1.4 (1.2-1.7)	0.0005	***	0.9 (0.6-1.3)	0.5304	ns	2.5 (1.9-3.3)	<0.0001	****	1.4 (0.8-2.6)	0.2487	ns
Not vaccinated	1.0 (ref)			1.0 (ref)			1.0 (ref)			1.0 (ref)		
Number of CIR	NA	NA	NA	NA	NA	NA	3.4 (3.1-3.8)	<0.0001	****	3.2 (2.8-3.6)	<0.0001	****
Time group												
1	0.3 (0.2-0.8)	0.0074	**	0.3 (0.2-0.8)	0.0083	**	0.2 (0.1-0.8)	0.0260	*	0.3 (0.1-1.2)	0.0902	ns
2	1.0 (ref)			1.0 (ref)			1.0 (ref)			1.0 (ref)		
3	1.2 (0.6-2.3)	0.6717	ns	1.4 (0.7-2.8)	0.3549	ns	0.6 (0.2-1.9)	0.3902	ns	0.4 (0.1-1.5)	0.1733	ns
4	1.3 (0.8-2.2)	0.3616	ns	1.5 (0.9-2.7)	0.1385	ns	0.6 (0.3-1.4)	0.2215	ns	0.4 (0.2-1.0)	0.0544	ns
5	1.6 (0.9-2.7)	0.1102	ns	1.9 (1.1-3.4)	0.0281	*	0.8 (0.3-1.8)	0.5295	ns	0.6 (0.2-1.5)	0.2542	ns
6	2.4 (1.3-4.3)	0.0030	**	2.8 (1.5-5.2)	0.0009	***	1.6 (0.7-3.8)	0.2549	ns	0.9 (0.3-2.3)	0.7844	ns
7	2.7 (1.5-4.9)	0.0014	**	3.5 (1.9-6.7)	0.0001	***	1.0 (0.4-2.7)	0.9312	ns	0.7 (0.2-2.2)	0.5721	ns
8	3.0 (1.7-5.3)	0.0002	***	3.5 (1.9-6.4)	<0.0001	****	4.1 (1.9-8.8)	0.0004	***	3.0 (1.2-7.2)	0.0164	*
9	2.1 (1.3-3.4)	0.0042	***	2.4 (1.4-4.1)	0.0009	***	2.2 (1.1-4.5)	0.0267	*	1.8 (0.8-3.9)	0.1513	ns
10	2.0 (1.2-3.3)	0.0055	***	2.4 (1.4-4.0)	0.0010	**	2.4 (1.2-4.8)	0.0140	*	2.1 (1.0-4.6)	0.0560	ns

Supplementary Table 5. VOCs were significantly associated with either having a child living with a positive NIH worker (CIR) and/or having a child be the source of their infection (SOI). Odds ratios (OR) and 95% confidence intervals (CIs) were calculated in both unadjusted and adjusted (Adj) logistic regression models relative to a reference group (ref). P-values were reported for each OR, with significance determined to be <0.05.

Variable	Alpha variant				Delta variant				OR (95% CI)
	OR (95% CI)	P value	Adj OR* (95% CI)	P value	OR (95% CI)	P value	Adj OR* (95% CI)	P value	
CIR									
No	1.0 (ref)		1.0 (ref)		1.0 (ref)		1.0 (ref)		1.0 (ref)
Yes	0.6 (0.5-0.7)	<0.0001	0.6 (0.5-0.7)	<0.0001	1.4 (1.2-1.7)	<0.0001	1.4 (1.2-1.7)	<0.0001	1.2 (1.1-1.3)
Child SOI									
No	1.0 (ref)		1.0 (ref)		1.0 (ref)		1.0 (ref)		1.0 (ref)
Yes	0.3 (0.2-0.4)	<0.0001	0.3 (0.2-0.4)	<0.0001	1.4 (1.1-1.8)	0.0026	1.4 (1.1-1.8)	0.0043	1.9 (1.6-2.2)
Age group									
<5	0.2 (0.1-0.4)	<0.0001	0.2 (0.1-0.5)	<0.0001	1.3 (0.8-2.1)	0.2624	1.1 (0.7-1.9)	0.6073	2.3 (1.5-3.5)
5-11	0.4 (0.2-0.6)	<0.0001	0.4 (0.3-0.6)	<0.0001	1.4 (1.0-2.1)	0.0379	1.3 (0.9-1.9)	0.1954	1.6 (1.2-2.1)
12-17	0.4 (0.2-0.6)	<0.0001	0.4 (0.2-0.6)	<0.0001	1.3 (1.0-2.0)	0.0842	1.2 (0.8-1.8)	0.3079	1.7 (1.2-2.3)

* Adjusted for sex and age of NIH worker.

**Adjusted for sex and age of NIH worker and for the number of children in residence.



Supplementary Figure 1. Variants of concern detected within the total NIH positive case cohort, represented in time groups and as percentages of total samples sequenced, overlaid with cumulative case counts over various strata. Strata included (A) the age category of the positive NIH worker, (B) the category of SOI assigned to the positive case, (C) the type of work conducted by the NIH worker and RTWG assignment associated with this work, (D) sex of the worker, (E) whether the worker was onsite within 7 days of symptom onset, (F) recent travel history associated with the case, and (G) testing program which gave the worker their first positive result. Raw data is reported in Supplementary Table 2.

References

1. E G, M L, M C. On the Effect of Age on the Transmission of SARS-CoV-2 in Households, Schools, and the Community. *The Journal of infectious diseases*. 2021;223(3).
2. KJ M, M W, NT A, O A, J M, K P, et al. Hospitalization of Infants and Children Aged 0-4 Years with Laboratory-Confirmed COVID-19 - COVID-NET, 14 States, March 2020-February 2022. *MMWR Morbidity and mortality weekly report*. 2022;71(11).
3. M C, CGG B, A H. COVID-19 pandemic-a focused review for clinicians. *Clinical microbiology and infection : the official publication of the European Society of Clinical Microbiology and Infectious Diseases*. 2020;26(7).
4. KM B, K R, SM K, M L, S C, YH G, et al. Model-informed COVID-19 vaccine prioritization strategies by age and serostatus. *Science (New York, NY)*. 2021;371(6532).
5. M W, KR W, JW G, HM S, AE B, D M, et al. The Advisory Committee on Immunization Practices' Interim Recommendation for Use of Pfizer-BioNTech COVID-19 Vaccine in Adolescents Aged 12-15 Years - United States, May 2021. *MMWR Morbidity and mortality weekly report*. 2021;70(20).
6. KR W, D M, JP C, SC H, JM J, SC R, et al. The Advisory Committee on Immunization Practices' Interim Recommendation for Use of Pfizer-BioNTech COVID-19 Vaccine in Children Aged 5-11 Years - United States, November 2021. *MMWR Morbidity and mortality weekly report*. 2021;70(45).
7. KE F-D, M W, DL M, E T, LE R, E H, et al. Interim Recommendations of the Advisory Committee on Immunization Practices for Use of Moderna and Pfizer-BioNTech COVID-19 Vaccines in Children Aged 6 Months-5 Years - United States, June 2022. *MMWR Morbidity and mortality weekly report*. 2022;71(26).
8. E V, S M, M C, JC B, R J, L G, et al. Assessing transmissibility of SARS-CoV-2 lineage B.1.1.7 in England. *Nature*. 2021;593(7858).
9. SE G, P P, DR M, MA J, JT B, A M, et al. Emergence of SARS-CoV-2 B.1.1.7 Lineage - United States, December 29, 2020-January 12, 2021. *MMWR Morbidity and mortality weekly report*. 2021;70(3).
10. A S, S H, J D, KJ M, MA C, A K, et al. Community transmission and viral load kinetics of the SARS-CoV-2 delta (B.1.617.2) variant in vaccinated and unvaccinated individuals in the UK: a prospective, longitudinal, cohort study. *The Lancet Infectious diseases*. 2022;22(2).
11. A F, RE E, J S, CP M, JM N, DC G, et al. The displacement of the SARS-CoV-2 variant Delta with Omicron: An investigation of hospital admissions and upper respiratory viral loads. *EBioMedicine*. 2022;79.
12. EK A, A B, KE F-D, ZR S, N S, G D, et al. Association Between 3 Doses of mRNA COVID-19 Vaccine and Symptomatic Infection Caused by the SARS-CoV-2 Omicron and Delta Variants. *JAMA*. 2022;327(7).
13. N H, P P, T K, Y M, K O, RC G, et al. SARS-CoV-2 infection of the oral cavity and saliva. *Nature medicine*. 2021;27(5).
14. JR T, P J, D S, N S, A W, G H, et al. Improvements to the ARTIC multiplex PCR method for SARS-CoV-2 genome sequencing using nanopore. *bioRxiv : the preprint server for biology*. 2020.
15. V N, AE R, S D, E dW, JH Y, S B, et al. Yearlong COVID-19 Infection Reveals Within-Host Evolution of SARS-CoV-2 in a Patient With B-Cell Depletion. *The Journal of infectious diseases*. 2022;225(7).
16. Á OT, E S, A U, B J, V H, JT M, et al. Assignment of epidemiological lineages in an emerging pandemic using the pangolin tool. *Virus evolution*. 2021;7(2).
17. V. P. Editorial: Revised World Health Organization (WHO) Terminology for Variants of Concern and Variants of Interest of SARS-CoV-2. *Medical science monitor : international medical journal of experimental and clinical research*. 2021;27.
18. C C, LC L, L R, WJ S. COVID-19 and the gender gap in work hours. *Gender, work, and organization*. 2021;28(Suppl 1).

19. KAM G, S B, T M, HJT U, N I, G C-D, et al. Children's role in the COVID-19 pandemic: a systematic review of early surveillance data on susceptibility, severity, and transmissibility. *Scientific reports*. 2021;11(1).
20. AA M, H C, J S, G S, R S, J L, et al. Risk of SARS-CoV-2 reinfections in children: a prospective national surveillance study between January, 2020, and July, 2021, in England. *The Lancet Child & adolescent health*. 2022;6(6).
21. N R, D D. Human and novel coronavirus infections in children: a review. *Paediatrics and international child health*. 2021;41(1).
22. D A, K D, M C, SP F, A P, S B, et al. Association between COVID-19 outcomes and mask mandates, adherence, and attitudes. *PloS one*. 2021;16(6).
23. EM B, LM N, S J, B H, N B, NE S, et al. Pooling in a Pod: A Strategy for COVID-19 Testing to Facilitate a Safe Return to School. *Public health reports (Washington, DC : 1974)*. 2021;136(6).
24. E F, I E, T S, C S, L R, M M, et al. 'Scuola sicura': a school screening testing programme to prevent the spread of COVID-19 in students in Piedmont. *Epidemiologia e prevenzione*. 2021;45(6).
25. CC C, CC L, TF C, S S-SC. Evaluation of a Rapid Antigen Test for the Diagnosis of SARS-CoV-2 during the COVID-19 Pandemic. *Inquiry : a journal of medical care organization, provision and financing*. 2022;59.
26. VT C, NG S, MAP D, MR C, R S, AR Y, et al. Comparison of Home Antigen Testing With RT-PCR and Viral Culture During the Course of SARS-CoV-2 Infection. *JAMA internal medicine*. 2022;182(7).
27. A M, M K, F B, J B, O M, M C-M, et al. Quantifying the relationship between SARS-CoV-2 viral load and infectiousness. *eLife*. 2021;10.
28. O P, K A, N H, P S, C G, A I, et al. Infectious viral load in unvaccinated and vaccinated individuals infected with ancestral, Delta or Omicron SARS-CoV-2. *Nature medicine*. 2022;28(7).