

1 *“We can’t develop standards for a thing which doesn’t belong to us”*: Assessment
2 of infrastructure, behaviours and user satisfaction of Guardian Waiting Shelters
3 for secondary level hospitals in southern Malawi.

4 Mindy Panulo^{1,4*}, Jennifer Lamb², Kondwani Chidziwisano^{1,3,4}, Blessings White¹, Robert Dreibelbis², Tracy
5 Morse^{1,4}

6 * Corresponding author mpanulo@mubas.ac.mw

7 ¹ Centre for Water, Sanitation, Health and Appropriate Technology Development (WASHTED), Malawi
8 University of Business and Applied Sciences, Blantyre, Malawi.

9 ²Department of Environmental Health and WASHTED Centre, Polytechnic, University of Malawi,
10 Blantyre, Malawi

11 ³London School of Hygiene and Tropical Medicine, Department of Disease Control, Keppel Street, UK

12 ⁴Department of Civil and Environmental Engineering, University of Strathclyde, Glasgow, Scotland

13

14

15 **Abstract**

16 **Background**

17 Guardian Waiting Shelters (GWSs) are an essential component of the Malawi's health care system as
18 they serve as a temporary home for patient guardians while taking care of their relatives admitted to
19 the hospital. Despite GWSs valuable role in healthcare settings, there have been few studies on the
20 specific experiences, infrastructure, and conditions provided at these facilities. The study examines GWS
21 management structures and conditions, as well as guardian satisfaction and perception of health risks
22 related to GWS use.

23 **Methods**

24 In this cross-sectional, mixed-methods study, we assessed 12 GWSs from 12 districts in the southern
25 region of Malawi. Qualitative data included interviews (n=149) and focus group discussions with patient
26 guardians (n=72), as well as interviews with GWS caretakers (n=5), representatives from Hospital
27 Management (n=12) and Hospital Advisory Committees (n=11). Quantitative data included structured
28 assessments (n=12) of infrastructure present and used at GWSs. Descriptive statistics and qualitative
29 thematic analysis were utilized for data analysis, and a problem tree analysis was used to triangulate and
30 summarize the findings.

31 **Results**

32 249 participants, including 221 being patient guardians, participated across the 12 GWSs. Each GWS had
33 an average of 100 users daily, primarily middle-aged females (71%). There was a lack of clear and
34 consistent management and responsibility for GWS operation and maintenance. GWS infrastructure
35 conditions were poor, with inadequate functional sleeping rooms, insufficient access to water and
36 sanitation facilities, and limited facilities for hygienic food preparation. Notably, 50% of the GWSs lacked

37 water access, and a quarter had non-functional toilets. Overall, guardians felt unsafe and at risk of
38 disease transmission when staying within GWS.

39 **Conclusion**

40 Study findings highlight lack of clear, consistent GWS ownership as a root cause of challenges in GWSs.
41 Clear policy and operational standards must be established for effective management and smooth
42 functioning of GWSs in Malawi.

43

44 **Keywords**

45 patient guardians, waiting shelters, health systems, Malawi, Africa, WASH

46 **BACKGROUND**

47 Sustainable Development Goal (SDG) 3.8 aims to achieve universal health coverage (1). However, Low-
48 and Middle-Income Countries (LMICs) are struggling to achieve SDG 3 not only as a result of the recent
49 competing demands of COVID-19 pandemic, but also the existing shortage of healthcare personnel,
50 supplies and budget (2–6) . As a result, hospitals in the sub-Saharan Africa region, including Malawi, rely
51 on family members as patient’s carers (locally known as patient guardians) as a key component of health
52 services.

53 In Malawi, guardians are typically accommodated in a dormitory type of housing known as the Guardian
54 Waiting Shelters (GWSs) (7–9). GWSs are today an integral component of the health care system in
55 Malawi, established to provide a safe and healthy environment for patient guardians to reside in while
56 they attend to their relatives admitted to hospital. Duties of these guardians at hospitals typically
57 involve activities such as bathing, cooking, feeding, monitoring of medications, and assisting with
58 rehabilitation exercises for patients (2,9,10) . Additionally, the physical presence of a family member
59 during hospitalization has shown to offer psychosocial support to the patient, which ensures trust in the
60 care the patient is receiving (11). In some circumstances, GWSs also serve as Maternity Waiting Homes
61 (MWHs) for women with high-risk pregnancies or those from hard-to-reach areas as they await their
62 expected date of delivery (11–14). The World Health Organisation (WHO) recommends provision of
63 MWHs in healthcare settings to promote Maternal Child Health (MCH) (15). However, in Malawi,
64 specifically designated MWHs have been reported in only 50% of the district hospitals (9).

65 Despite GWSs providing residence to patient guardians and maternity waiting mothers, previous
66 research has focused on MWHs only, through the examination of their conditions, usage, quality of care,
67 users experience and satisfaction (12,16–20). Evaluation studies in Malawi, Ethiopia and Zambia found
68 that MWH users were dissatisfied with the sleeping and cooking space, availability of water, lack of

69 privacy, poor sanitation, pests and congestion (12,18,21,22). In contrast, a qualitative thematic analysis
70 recommended clean environments and safe structures as essential in effective functioning of the MWH
71 (23). To date, there has been limited research to evaluate the status of the GWS model as an integral
72 component of the general healthcare service delivery system in Malawi and similar contexts.

73 Thus, this study was conducted to 1) examine the GWS management structures and available
74 infrastructure and services; 2) understand guardian satisfaction with the GWS structure and
75 environment, and their perception of health risk from GWS use. Results from this study will inform
76 service providers, local planners, and decision makers to improve the functionality of GWSs, and will
77 examine the current and potential roles patient guardians can play in this.

78

79 **METHODOLOGY**

80 **Study design and setting**

81 This was a cross-sectional exploratory sequential mixed-methods design where structured quantitative
82 observation data was used to inform subsequent qualitative data collection.

83 The study was conducted in twelve GWSs located across the twelve districts in the southern region of
84 Malawi. These hospitals belong to the second tier of Malawi's healthcare system services as referral
85 centres for primary healthcare facilities. The hospitals offer outpatient and inpatient services, surgical
86 procedures such as caesarean sections, and other emergency life-saving surgeries.

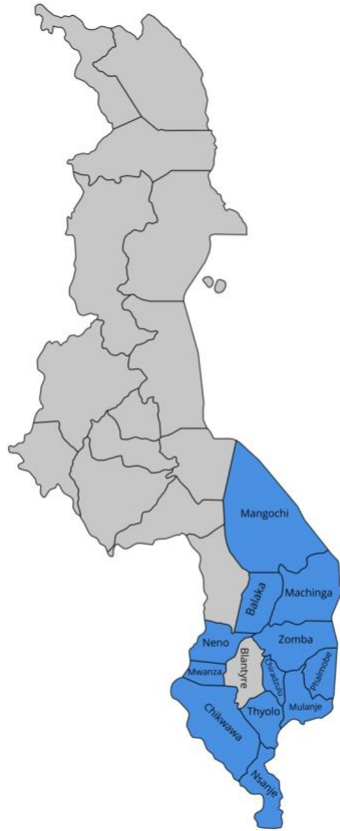
87 **Study Population**

88 We recruited patient guardians who were using the GWS, members of the Hospital Advisory Committee
89 (HAC), members of the hospital management committee and a GWS caretaker where available. A
90 guardian was a family member or designated carer of the patient seeking health care. Members of the

91 Hospital Advisory Committee (HAC) were community representatives who act as mediators between the
92 community members and healthcare workers. They also ensured that there was accountability of
93 medicine at the hospital, the hospital grounds and services were respected and functional, and delivered
94 hygiene talks to patient guardians. The Hospital Management Committee (HMC) was tasked with the
95 daily management of the hospital, and included the District Medical Officer, District Environmental
96 Health Officer, Hospital Administrator etc. The HMC also played a pivotal role within their community
97 e.g., during immunisation campaigns such as polio, and during the pandemic they were active to counter
98 misconceptions about COVID-19. GWS caretakers were personnel employed by the hospital. Their roles
99 included sweeping the public yard area of the GWS, cleaning toilets, solid waste management, ensuring
100 there was water onsite at the GWS and reminding patient guardians to take care of the sleeping,
101 cooking areas and water, sanitation, and hygiene (WASH) infrastructure.

102 **Sampling and sample size**

103 The study targeted ten district (public) hospitals and two Christian Health Association (CHAM) (private)
104 hospitals in the southern region of Malawi (Figure 1).



105

106 *Figure 1: Map of Malawi depicting the Districts of the Southern Region included in the study (Blantyre not included in the sample*
107 *as it does not have secondary level hospital facility and was therefore excluded)*

108 From each hospital, we recruited 1 HAC chairperson, 1 GWS caretaker, 1 Hospital Management
109 Committee member and six patient guardians for in-depth interviews (IDIs). Two focus group discussions
110 (FGDs) were also conducted at each hospital (1 male; 1 female) to fully understand the opportunities
111 and challenges surrounding GWSs. The study recruited patient guardians who had used the GWS for
112 more than four days to ensure they were familiar with the hospital and GWS setting.

113

114

115 **Data collection**

116 Data was collected from 20th December 2021 to 25th March 2022 by three experienced research
117 assistants who were fluent with the local language (*Chichewa*). These research assistants were trained
118 for four days including pre-testing of the data collection tools prior to data collection. The study applied
119 various methods of data collection to ensure a comprehensive understanding of each GWS setting:

120 *Observation checklist:* An observation checklist was used to assess availability and condition of
121 infrastructure at the GWS, which included sleeping rooms, access to safe water, hygiene, and sanitary
122 facilities. These included bathing areas, toilets, water points, handwashing facilities, laundry areas and
123 cooking places. Observations provided insights for further exploration during the subsequent interviews
124 and focus group discussions.

125 *Qualitative data:* In-depth interviews (IDIs) were conducted with patient guardians to understand their
126 daily life at the GWS, including hygiene practices, access to water and sanitary facilities, perception of
127 safety and disease risk while staying at the GWS. These also provided a snapshot of the role of the
128 patient guardians in health care utilisation for their family member who is admitted at the hospital. IDIs
129 with HMC and HAC representatives provided an understanding of the ownership, governance structures,
130 and daily running of the GWS. IDIs with GWS caretakers generated information on daily management of
131 the GWS. FGDs with patient guardians were conducted to understand social and community regulated
132 practices in each locality based upon shared common values and beliefs, which could not be uncovered
133 using IDIs.

134 IDIs lasted 45 to 60 minutes while FGDs were conducted for 60 to 90 minutes in the local language.

135

136

137 **Data analysis**

138 *Quantitative data:* Quantitative data from checklist observations were collected through Kobo Collect
139 software platform (24) and later exported to Microsoft Excel 2016 (Microsoft Corporation, Redmond,
140 WA, USA). Descriptive statistics were used to summarize the collected data and categorical variables
141 were summarized using frequencies.

142 *Qualitative data:* All interviews (IDI and FGD) were audio recorded which helped to manually generate
143 preliminary transcripts from the interviews. Transcriptions were read and verified by four research team
144 members before coding them based on deductive study themes of management structures, perception
145 of health risk among GWS users and satisfaction with the GWS structure and environment. The analysis
146 then enabled inclusion of inductive themes.

147 *Problem analysis*

148 Taking into account the findings of the assessment across all 12 districts, the research team examined
149 the qualitative and quantitative data using a problem tree analysis to map out the anatomy of the
150 cause-and-effect relationships seen at the GWS (25).

151

152 **Ethical consideration**

153 This study was approved by the National Health Science Research Committee of Malawi (P No.
154 21/11/2822) and London School of Hygiene and Tropical Medicine Ethics Committee, UK (Ref 2655). All
155 interviewed respondents provided written informed consent for participation in the study, and no
156 names were mentioned or recorded during the FGDs and interviews.

157

158

159 **Results**

160 ***Socio-demographic characteristics of respondents***

161 In total, 249 respondents were involved in the study, with 221 participants being patient guardians.

162 Seventy-two patient guardians were recruited for IDIs while 149 patient guardians were involved in

163 FGDs. Only five GWSs had caretakers who participated in the study (Table 1). Eleven management

164 committee members and 12 HAC members participated through IDIs.

165 **Table 1: Study participants**

GWS name	Affiliation	HAC chairpersons (IDI)	Management committee member (IDI)	GWS caretaker (IDI)	Patient guardians	
					FGDs	IDIs
Chiradzulu District Hospital GWS	Public HCF	1	1	-	6	6
Thyolo District Hospital GWS	Public HCF	1	1	1	14	6
Mulanje District Hospital GWS	Public HCF	1	1	1	7	6
Zomba St. Lukes GWS	Private HCF	1	-	1	9	6
Machinga District Hospital GWS	Public HCF	1	1	-	16	6
Mangochi District Hospital GWS	Public HCF	1	1	1	14	6
Chikwawa District Hospital GWS	Public HCF	1	1	-	14	6
Nsanje District Hospital GWS	Public HCF	1	1	-	12	6
Balaka District Hospital GWS	Public HCF	1	1	-	14	6
Mwanza District Hospital GWS	Public HCF	1	1	-	16	6
Phalombe Holy Family GWS	Private HCF	1	1	1	13	6
Neno District Hospital GWS	Public HCF	1	1	-	14	6
Total		12	11	5	149	72

166

167 Across all 221 guardians who participated in the study, the average age was 40 years with 43% of them

168 being a patient guardian to antenatal waiting mothers (43%) (Appendix 1). Seventy-nine percent of the

169 patient guardians depended on public transport to get to the hospital/GWS and on average they had
170 stayed at the GWS for 19 days prior to data collection.

171 ***Ownership, and stakeholders responsible for conditions and management of the GWS***

172 Ownership

173 Two of the GWSs were serving privately owned faith-based (Christian Health Association of Malawi)
174 healthcare facilities and were managed by the environmental health department through the hospital
175 administrator. The remaining 10 GWSs were affiliated with government-owned public hospitals. There
176 was significant variation in management and oversight of GWSs at government facilities (Table 2).
177 Several stakeholders including the Members of Parliament, District Councils, Hospitals, and the wider
178 community were identified as key stakeholders in the daily operation and maintenance and routine
179 monitoring of the GWS. Interviews revealed a lack of clarity on who was responsible for GWS across
180 multiple stakeholders. In several cases, respondents said that the GWSs were the responsibility of the
181 hospital management since the GWSs were usually built on or near hospital grounds, and served people
182 who were using the hospital. In other interviews, the hospital management and HAC members explained
183 that the GWS belonged to the district council or the community.

184 Budget

185 Only GWSs serving private owned healthcare facilities had an allocated budget. For public facilities,
186 respondents reported using limited resources that were meant for patient wards, such as gloves and
187 bleach for cleaning and disinfection to take care of the GWS.

188 "No. How can we budget for a thing which is not owned by us, it belongs to the district council.
189 Sometimes as a hospital we just help because the GWS is near us" (IDI, Hospital management
190 representative)

191

192

193 Stakeholders responsible for conditions and management

194 Five GWSs had a paid caretaker (two from private and three from public facilities). The caretaker was
195 responsible for cleaning the bathrooms, toilets, and the surrounding environment. At nine GWSs, a
196 chairperson for each sleeping room was appointed from among the guardians staying in the facility
197 (Table 3). The GWS chairperson was responsible for maintaining order at the GWS, solving disputes
198 among patient guardians, allocating sleeping space to new guardians, and organising cleaning of the
199 GWS. GWSs with a caretaker had generally better hygienic conditions than those without caretakers
200 while there were no noticeable improvements in hygienic conditions among facilities with and without
201 chairpersons. GWS chairpersons reported that they had limited authority as volunteers and other
202 guardians did not respect them.

203 “It is difficult to maintain cleanliness here at the GWS because each time I try to organise my
204 fellow patient guardians to clean the shelter, they always talk ill saying this is not my home, just
205 mind your own business” (IDI, GWS Chairperson).

206

207 Respondents acknowledged that GWSs suffer from the lack of standards and policies to ensure there is a
208 common strategy to design, deliver, operate, maintain, and monitor the facilities. This issue was further
209 exacerbated by the absence of clarity of ownership and governance of GWSs at the district and national
210 level.

211 “We can’t develop standards for a thing which doesn’t belong to us. The first thing to be
212 established is ownership for that facility, from there, issues of standards and monitoring can be
213 resolved” (IDI, DEHO)

214

215 Some respondents highlighted the absence of an Infection Prevention and Control (IPC) policy targeting
216 GWSs as *“it is associated as being low risk”* (IDI, DEHO) and beyond the scope of existing guidelines
217 focusing on medical facilities. Meanwhile, one respondent challenged that an IPC policy should also
218 focus on the GWSs with the following reason.

219 “That area can be an important source of diseases. For example, people are sleeping on floors,
220 so in terms of scabies, the diseases can spread very fast” (KII, DEHO).

221

222 Several HAC respondents raised concerns about tensions between HAC members and guardians.

223 Guardians often disregarded requests from HAC members to take specific actions to improve conditions

224 in GWSs (e.g., keeping latrines, cooking, and sleeping rooms clean and tidy). HAC members suggested

225 this was linked to the lack of any visible identification – such as an identification (ID) or uniform – that

226 signified their official role within the health system. Caretakers were also responsible for encouraging

227 hygienic use and maintenance of GWS infrastructure.

228 ***Guardian Waiting Shelters use and characteristics.***

229 During the time of the study, an average of 100 people were reported to be utilising each GWS on a

230 daily basis. For the five facilities that had no specific accommodation for the maternity waiting mothers

231 (Maternity Waiting Shelters), GWSs were used to also accommodate both maternity waiting mothers

232 and patient guardians.

233 Generally, staying at the GWS was free of charge, however, four GWSs collected fees (1 private and 3

234 public GWS) of approximately USD0.2 per patient guardian. Collection of the fees was locally arranged

235 by the GWS caretaker or GWS chairperson and collection frequency varied from daily to only collected

236 as the need arose. GWS chairpersons reported that the money was used for buying cleaning materials

237 (e.g., hoes, brushes, brooms, and mops), and lighting materials (e.g., candles and torches).

238 Seven of the GWSs had sleeping rooms used by the patient guardians for sleeping (Table 2)(Figure 2). In

239 the rest of the five GWSs, three were not used by the patient guardians due to poor conditions (i.e., no

240 doors, windows and partly roofed), while two of GWS had no sleeping rooms. In these cases, the patient

241 guardians reported sleeping in patient wards, hospital verandas and corridors (Table 2). None of the

242 GWSs had a supply of basic needs and amenities such as mosquito nets, bedding, lockable sleeping

243 room doors or a secure place to store their belongings. Ten GWSs, all serving public facilities, lacked
244 electric lighting (Table 2). GWS serving private owned healthcare facilities had better amenities such as
245 electricity, security guards, and perimeter fencing around the GWS (Table 2).

246 Six out of the twelve GWSs had a functional onsite water supply from a safe source (standpipes and
247 boreholes) within the GWS, while others accessed water either from community, school and hospital
248 water points that included boreholes and standpipes (Table 3). Missing or broken taps were commonly
249 observed at GWSs (Figure 2). Respondents reported lack of timely and correct payment of pre-paid
250 water, pumps being broken and sporadic electricity limiting water availability. Eleven of the GWSs had
251 toilets (Table 2), which included the two GWSs serving private owned healthcare facilities which had
252 both water closet toilets and pit latrines. The remaining nine GWSs serving public owned healthcare
253 facilities had only pit latrines, of which seven were almost full and faeces, used nappies, and menstrual
254 hygiene materials were observed on the floor (Table 2). Three GWSs had evidence of open defaecation.

255 “Sometimes I prefer to go to the bush than using the latrines which are very unhygienic”
256 (Female IDI participant).

257
258 Hygiene conditions were generally better in GWSs at private owned healthcare facilities compared to
259 those serving public owned healthcare facilities. Handwashing facilities (manually filled 20-litre buckets
260 with taps) were observed only in the GWSs at private owned healthcare facilities (Table 2). However,
261 soap (liquid or bar) was not observed at any HWF. The majority of GWSs (n=11) had adequate facilities
262 for guardians to bathe (bathrooms). However, GWSs at public owned healthcare facilities were observed
263 to be in poor condition (i.e., poor drainage, no privacy and were left uncleaned)(Figure 2). Due to
264 unhygienic conditions of the toilets, guardians reported feeling disgusted by latrine conditions and
265 resorted to using bathing areas as toilets and or opted for open defaecation. Only one GWS had

266 information education and communication (IEC) materials (poster) displayed within the GWS to
267 promote handwashing with soap.

268 Five GWSs had rubbish pits which were found to be full of waste from the GWS, and often located close
269 to the cooking areas. Market sellers nearby the GWSs were also reported to use the GWS infrastructure
270 – specifically toilets and rubbish pits. Additionally, people with developmental disabilities were also
271 reported and observed staying in five of the GWS, including using the sleeping and cooking places.

272 Eight of the GWS reported to offer health and hygiene talks to the patient guardians either on a daily,
273 weekly, or ad-hoc basis (e.g., during outbreaks). These talks were conducted by the GWS caretaker,
274 guards, HAC members, or health personnel, and were confirmed by the patient guardians. Talks
275 contained various messages covering sanitation (solid waste management, use of latrines), hand
276 hygiene and potential risks and health concerns of diarrhoea, cholera, COVID-19, scabies, malaria,
277 cervical cancer, Tuberculosis, and HIV.

278 ***Guardian and Caretaker Experiences using Guardian Waiting Shelters***

279 There were mixed receptions to payment among guardians, some felt it was a good idea since this
280 money was used to improve their wellbeing and overall GWS conditions, while others did not appreciate
281 this approach as they already had financial challenges to take care of their patients and had the
282 expectation that the hospital management should cover such costs for the GWSs.

283 **Water, sanitation, and hygiene (WASH)**

284 All patient guardians appreciated the presence of the GWS within the hospital and reported using the
285 GWS as their home as it offered them a place to cook, bath and some to sleep. At better maintained
286 facilities, guardians reported being able to practise selected hygiene behaviours while at the GWS such
287 as bathing, sweeping and mopping sleeping and cooking areas, hand washing before eating, washing

288 clothes, washing kitchen utensils, washing food before cooking, or covering food and water, and
289 disposing or reheating left-over food. Motivation to practise such behaviours were reported as
290 preventing disease, a continuation of what they practised at home, and having more free time while at
291 the GWS. Additionally, some patient guardians reported that since they found the GWS already clean,
292 they were motivated to ensure they maintained these standards.

293 However, where infrastructure was limited or poor, patient guardians reported poor hygiene practices.
294 For example, due to lack of laundry spaces, patient guardians washed soiled clothing including bedding
295 at drinking water collection points, which discouraged others from using such water points and resulted
296 in them collecting water from alternative sources located outside the GWS premise. It was further
297 reported that female patient guardians were leaving menstrual hygiene materials in the bathing
298 shelters, as they had no appropriate means for disposal or management. Since most of the GWS were
299 utilised by women, shelters for bathing were not segregated by gender and one male IDI participant
300 commented:

301 "Sometimes I fail to bath here at the GWS because it is shameful for me to find menstrual
302 hygiene materials in the bathrooms" (IDI, Male guardian).

303

304 Cooking and food hygiene

305 Cooking meals for patients was considered one of the primary responsibilities of the patient guardians.
306 Guardians cooked from various locations within the GWS, e.g. on the ground of the GWS compound
307 area, in old sleeping rooms or in designated kitchens. Food preparation was generally considered
308 challenging by all guardians. Guardians reported that the cooking rooms were inadequate and often
309 lacked ventilation, especially considering that main source of fuel was biomass. The lack of handwashing
310 facilities in the cooking spaces was reported to lead to inadequate or no handwashing during cooking.
311 Limited kitchen utensils availability (e.g., dish racks and plates) was further reported to compromise

312 food hygiene practices. Patient guardians felt that the lack of WASH facilities compromised their ability
313 to practice food hygiene which may subsequently affect both guardians and patients.

314 “Due to lack of proper cooking place, we cook in those old sleeping rooms which are small and
315 poorly ventilated. We fear this may cause cough and other respiratory diseases” (Female FGD
316 participant).

317

318 Perceptions of public health risk

319 Patient guardians perceived that the poor environmental health conditions at the GWS, such as
320 overfilled waste disposal sites, poor ventilation, limited access to safe water, sanitation, and hygiene
321 (WASH) infrastructure and poor cleaning standards, exposed them to specific health risk. Specifically,
322 the patient guardians felt vulnerable to the transmission of cholera, diarrhoea, skin diseases, COVID 19,
323 malaria, cough, colds, Tuberculosis (TB), and pneumonia when staying at the GWS.

324 Patient guardians from public owned health facilities also highlighted safety, security, privacy, and well-
325 being concerns. This was related to the location of the GWS, which were often far from the hospital,
326 congested sleeping rooms (three people per square metre) (Figure 2), broken windows, poor lighting,
327 lack of locks on the sleeping room doors, and no means to secure their belongings in lockers.

328 “This GWS is isolated, with no fence nor electricity such that we are never safe as women”
329 (Female FGD participant).

330

331 Staff responsible for delivering health training reported that all support they received focused on roles
332 and responsibilities of GWS users and had limited technical training on topics they were required to
333 cover in health and hygiene talks. Instead, they used and applied their own knowledge acquired from
334 other roles when delivering the health and hygiene talks at the GWS. Additionally, despite healthcare

335 facility management reporting that the talks were delivered regularly, guardians reported that these
336 talks were infrequent:

337 “The caretaker or chairperson call us at one place to communicate on a particular issue, but this
338 only happens occasionally.... since I came here a week ago, we have been briefed on hygiene
339 issues once” (IDI, female guardian).

340

341

342

343

344

345

346

347

348

349

350

351

352

353

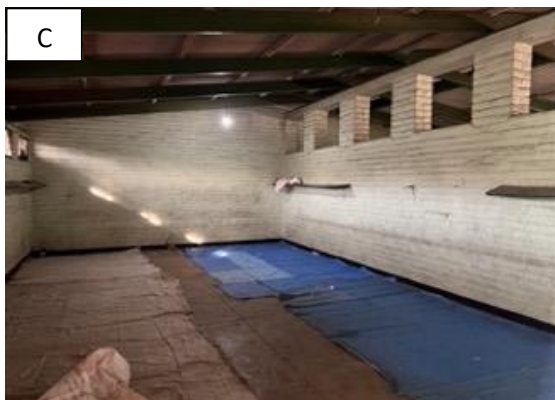


Figure 2: GWS characteristics observed during data collection

A: Broken water tap located at GWS

B: GWS pit latrine which is full, with indiscriminate disposal of diapers

C: Standard sleeping room for GWS

D: GWS bathing shelter used by both male and female patient guardians

354 Social relationships

355 Guardians were very dependent on financial support during the time they spent at the facility – usually
356 receiving money, food and firewood from friends and neighbours. Many reported that financial support
357 was insufficient, leading them to seek piece work in the surrounding area, often resulting in tensions
358 with local vendors or laborers. Additionally, patient guardians also reported fetching and selling
359 firewood to other patient guardians at GWS to have money. Quality of the relationships between
360 patient guardians varied across the GWSs. In some instances, patient guardians indicated good
361 relationships in terms of sharing food and firewood and escorting one another during the night from the
362 GWS to the hospital. On the other hand, some patient guardians complained of theft between patient
363 guardians, taking items such as cooking utensils, clothes, and food.

364 “I remember I came to the hospital unplanned as my patient had an emergency condition. But
365 when I arrived here at the GWS, my fellow patient guardians gave me food for my patient” (IDI,
366 Male guardian).

367

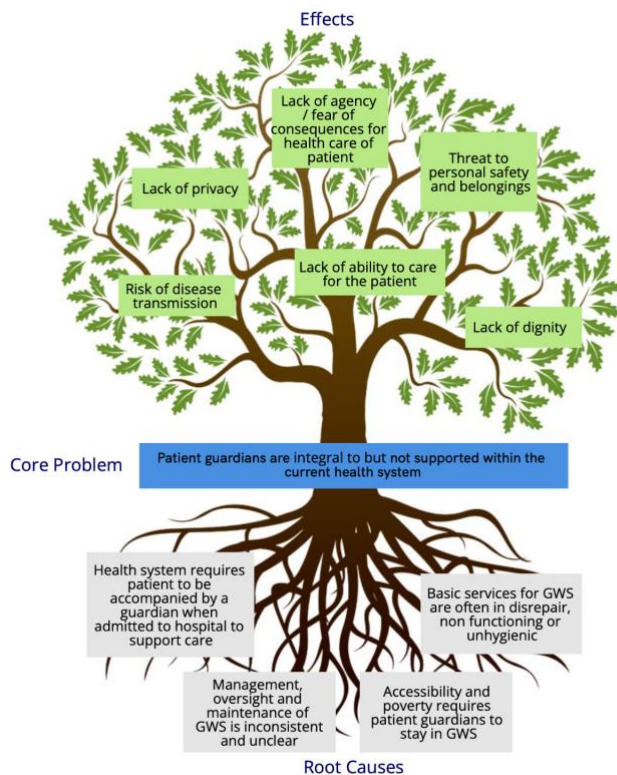
368 Accountability

369 Channels by which patient guardians could engage with those in charge of the GWSs were unclear. This
370 was compounded in many cases by the lack of clarity, even at management level, of where responsibility
371 for this facility lay. Even when reporting mechanisms were clear, patient guardians reported that they
372 were not comfortable reporting challenges, as they felt doing so would compromise the quality of care
373 given to their patients. In some instances where patient guardians were nominated as the GWS
374 chairperson there was also a belief that the associated patient would not get better and not be
375 discharged within a short period of time. Such a myth therefore potentially discouraged patient
376 guardians volunteering for such a role when staying at the GWS.

377

378 **Problem analysis**

379 Based on understanding from both interviews and literature that patient guardians are an integral yet
380 neglected part of the health care system in Malawi. We used a problem tree analysis to triangulate the
381 results and summarise the environmental, social, and economic challenges for patient guardians to
382 effectively utilise GWSs in their current state (Figure 3).



383

384 *Figure 3: Problem tree analysis summarising findings of GWS assessment*

Table 2: GWS Characteristics for twelve southern region health facilities

Facility name	District Population	Ownership		Management		Estimated number of guardians	Usage of GWS (Sleeping and or cooking)	Location of GWS	Security			Availability of water source within the GWS	Toilets			Bathrooms			Presence of handwash facilities	GWS Payment of user fee
		Public/private facility	Responsibility for GWS	Presence of caretaker	Presence of chairperson				Presence of guard	Fenced	Electricity		Presence of toilet within the	Number of	Condition of the toilets	Presence	Number of bathing shelters	Functionality of the bathing shelters		
Chiradzulu District Hospital GWS	356,875	Public	District Council	×	×	70	cooking only	outside hospital	×	×	×	×	√	4	all latrines are full, floor not clean, presence of faeces on latrine walls, bad smell	√	4	all functional	×	×
Thyolo District Hospital GWS	721,456	Public	District Council through the Hospital	×	√	100	cooking only	outside hospital	×	×	×	√	√	6	1 collapsed, 2 are full. The filled toilets are still being used plus the other 3, there is presence of faeces on latrine walls,	√	8	all Functioning	×	×
Mulanje District Hospital GWS	684,107	Public	Community through HAC	√	√	112	sleeping + cooking	outside hospital	×	×	No. However, wiring seen)	√	√	4	all latrines are full, presence of solids in the toilet, presence of faeces in latrine walls	√	4	Only 1 in use	×	√
Zomba St. Lukes GWS	851,737	Private	Hospital	√	√	56	sleeping + cooking	within hospital premise	×	√	√	√	√	6	4 in good condition, 2 closed	√	4	All functional	√	×

Facility name	District Population	Ownership		Management		Estimated number of guardians	Usage of GWS (Sleeping and or cooking)	Location of GWS	Security			Availability of water source within the GWS	Toilets			Bathrooms			Presence of handwash facilities	GWS Payment of user fee
		Public/private facility	Responsibility for GWS	Presence of caretaker	Presence of chairperson				Presence of guard	Fenced	Electricity		Presence of toilet within the	Number of	Condition of the toilets	Presence	Number of bathing shelters	Functionality of the bathing shelters		
Machinga District Hospital GWS	735,438	Public	District Council through the Hospital	x	v	130	sleeping + cooking	within hospital premise	x	v	v	v	v	10	all latrines are full, floor not clean, presence of faeces in latrine walls	x	0	NA	x	v
Mangochi District Hospital GWS (General)	1,148,611	Public	Hospital	v	x	120	cooking only	within hospital premise		v	x	x	v	8	8 permanent pit latrines + 7 COVID-19 emergency latrines (2 of which are still in use, given the poor conditions of the permanent facilities	v	2	Not functional - locked	x	x
Chikwawa District Hospital GWS	564,684	Public	Hospital	x	x	95	cooking only	within hospital premise	x	v	x	x	v	2	x	v	8	all functional	x	x
Nsanje District Hospital GWS	299,168	Public	Community through HAC and District Council	x	v	70	sleeping + cooking	outside hospital	x	x	x	x	v	3	the toilets are not clean, all toilets are filled up.	v	3	Two are in use, one is not in usable condition	x	x

Facility name	District Population	Ownership		Management		Estimated number of guardians	Usage of GWS (Sleeping and or cooking)	Location of GWS	Security			Availability of water source within the GWS	Toilets			Bathrooms			Presence of handwash facilities	GWS Payment of user fee
		Public/private facility	Responsibility for GWS	Presence of caretaker	Presence of chairperson				Presence of guard	Fenced	Electricity		Presence of toilet within the	Number of	Condition of the toilets	Presence	Number of bathing shelters	Functionality of the bathing shelters		
Balaka	438,379	Public	Community through HAC and the Hospital	×	√	110	Sleeping + cooking	within hospital premise	×	√	×	√	√	2	All toilets are filled up, and not clean	√	2	all functional	×	Yes
Mwanza	130,949	Public	District Council	×	×	60	cooking only	outside hospital	×	×	×	×	×	×	NA	NA	NA	NA	NA	×
Phalombe	429,450	Private	Hospital	√	√	100	sleeping + cooking	outside hospital	√	√	√	√	√	4	the toilets are clean, but there is water on the floor	√	5	all functional	√	√
Neno	138,291	Public	Hospital and District Council	×	√	130	sleeping + cooking	outside hospital	×	√	×	×	√	2	filled up and not clean	√	4	3 are in use, one not in use	×	×

Note: √= Present at the time of data collection ×= Not present at the time of data collection

Discussion

Most sub-Saharan African countries including Malawi adopted the patient guardian model where the patient guardians are responsible for providing informal supportive care to their relatives who have been admitted at the hospital (26,27). Over time, these patient guardians have proven to be useful assets in the health system as they reduce workload among overburdened healthcare workers and improve the quality of healthcare services which patients receive while in hospital, albeit the informal nature of their role continues to challenge the system (2,10,28–30). However, little is known about the conditions in which these patient guardians are residing. The study established that the GWSs are utilised by not only patient guardians but also serve as maternity waiting homes (MWHs) and are used daily by local vendors and members of the community with disabilities who have no formal support service.

It is acknowledged that many of the factors identified in this study are underpinned by the challenges faced in least developed countries such as Malawi, not least poverty which continues to be the main driver of these. Therefore, this study has considered these underlying factors, and identified three key areas which could realistically be addressed to improve the patient guardian experience, and therefore patient care, as well as reducing the risk of GWS acting a vehicle for infection transmission.

(1) Full integration of GWSs into the health care system

The lack of clear ownership and accountability for the GWS was a consistent root cause of other challenges facing effective management and maintenance of the facilities for patient guardians. This was particularly pronounced at public health facilities, where the lack of clear ownership, budget, and accountability systems to ensure effective conditions and management, make it near impossible to manage access and maintain better standards for the patient guardians. Where improved systems were in place, such as employed caretakers or privately managed facilities, GWSs were able to

maintain more hygienic and acceptable standards. Clarifying roles and responsibilities for management and maintenance of facilities has also been shown to be effective for the management of MWH where policies, management roles and finances are incorporated in the MWH model (31), and there is a clear recognition that health facilities are central to providing this support (32). Placing GWSs under direct and clear hospital management would also offer a strategic opportunity to formalise existing supporting structures such as the HAC who already have an informal role in GWS operations and have been found to be an effective model for oversight and management of health facilities in other contexts (33). Clearer management would also enable the role of GWS chairpersons to be re-evaluated, providing an opportunity to serve as a conduit for patient guardian communications and support the development of social capital in the group, rather than oversight of the facility for which they do not have the authority and are not compensated. More formal management would also enable clearer and realistic training for caretakers and chairpersons on technical subjects such as mitigating the risk of diarrhoeal and respiratory infections and providing them with appropriate acknowledgement of their role (e.g., ID, uniform).

(2) Development of clear standards for GWSs which encompass minimum requirements for infrastructure, services, and security

There are currently no documented standards for patient guardians shelters in Malawi, or similar settings, which outline minimum infrastructural requirements for these settings. Although all GWSs in this study had access to safe water, some collected the water from outside the GWS premise which could compromise the water quality and quantity and limit adequate hygiene behaviours (34) (35,36). Lack of hygienic sanitation facilities also drove some guardians to practice open defaecation in the immediate area, further eroding sanitary conditions of the GWSs and introducing additional disease risks. This study highlights the complex repercussions of poor infrastructure and services in these settings. Not surprisingly, the risk of disease transmission, as a result of poor WASH facilities, is high not only between patient guardians within the GWS, but also between the hospital and the

GWS residents as people move between wards and overcrowded, poorly ventilated and unclean accommodation (37). However, it is also clear that the poor infrastructure and services have an additional impact on safety, security, dignity, and mental wellbeing of patient guardians. All of these reduce their ability to look after those in their care effectively, while addressing the additional stresses and burdens facing them around income and provision of support (2,38,39). With this in mind, a minimum standard for GWS infrastructure and services should be developed, as has been undertaken for other areas of the health service (40,41). The provision of these standards will support effective management and accountability, and provide the services needed for the third key area of integrating IPC.

(3) Integration of GWS into hospital IPC systems

As reported elsewhere, the presence of guidelines for managing MWH in Malawi have contributed to smooth running and improved IPC of such premises (40,41). Therefore the development and integration of specific guidelines for the GWSs would be beneficial in improving the welfare of patient guardians while staying in the GWS. Guidelines should seek to encompass the GWS into the whole system of the health facility, taking advantage of readily available resources, and incorporating already existing IPC policy and guidelines for Malawi (40–42) to provide consistency of approach and a sense of ownership. However, they must also take into consideration the education and literacy levels of caretakers, HAC members and patient guardians, and as such an illustrative and behaviour centred approach to guideline development is essential if they are to be effective. Guidelines should also include the regular provision of health promotion activities which are delivered by skilled and competent personnel.

The study established mixed levels of social capital among the patient guardians. For those who indicated to have good relations with other fellow patient guardians, they expressed a better experience while staying at the GWS with a sense of belonging and support. High levels of social

capital in a community has been proven to promote participation of community members on various development activities and improves their coping mechanisms (43–45). It is anticipated that if the standards and systems within the GWSs were to improve, this would lead to a similar improvement in social capital within the patient guardian population. With the observed limited resources at the GWSs, promoting social capital among patient guardians is vital in both improving and maintaining the conditions of the GWSs.

Limitations

Some data from this study was based on self-reported data which is prone to bias as the participants may not recall all aspects of interest and may provide information based on what the researcher wants to hear. Where possible self-reported data has been validated through observation. GWSs in Malawi are present in both secondary and tertiary hospital settings; however, conducting the study in selected secondary level hospitals limits the generalizability of the present findings to other district and third tier hospitals in Malawi. Further, GWS management may have additional stakeholders at central government level to those recruited in this study; thus, future similar studies should consider targeting IPC and health facility infrastructure managers at Ministry of Health headquarters. Nevertheless, this study provides a better platform to understand the GWS context in Malawian hospitals for the subsequent design of interventions to improve the welfare of patient guardians.

Conclusion and recommendations

GWSs remain integral to health care delivery in Malawi but are not effectively supported in current systems. The findings of this study call for the need for clear GWS management and ownership to facilitate improved welfare for the patient guardians, who plays an important role in health service delivery in Malawi. Such ownership should ensure that GWSs have dedicated budgets and staff.

Importantly, much as specific guidelines for GWSs are essential, the need for the GWS management to be integrated into existing hospital IPC policy and guidelines cannot be overemphasized. Further, GWSs are potential touch points for health promotion among patient guardians and indirectly community members. Relatedly, future interventions aimed at improving patient guardian welfare in the GWSs should incorporate social capital strengthening. These study findings provide a basis from which a more detailed understanding of the GWS context in Malawi can be built.

Acknowledgments

A special thanks to all District commissioners, all health facility administrators, District Health Officers, District Environmental Health Officers, and District Nursing officers for assisting us during the data collection. Additionally, we would like to thank all GWS caretakers, Health Advisory committee members and patient guardians who participated in the study. Lastly, we would like to thank Mr Stevie Amos who supported data collection and management.

Financial disclosure

This was work funded wholly by the Reckitt Global Hygiene Institute (RGHI). The views expressed are those of the authors and not necessarily those of the RGHI.

Data Availability Statement

All data referred to within this study available in a repository upon acceptance.

Author Contributions

Conceptualization, M.P.,J.L., K.C. R.D., and T.M.; data curation, M.P.,J.L., K.C. R.D., and T.M; formal analysis, M.P., J.L., and B.W., funding acquisition, R.D.; methodology, M.P., J.L., K.C. , R.D., and T.M.; resources, R.D.; software, M.P., and J.L.; validation, M.P.,J.L., K.C. R.D., and T.M.; visualization, M.P., J.L., K.C. and T.M.; writing—original draft, M.P., J.L., and T.M.; writing—review and editing, M.P.,J.L.,B.W., K.C. R.D., and T.M.;. All authors have read and agreed to the published version of the manuscript.

Conflicts of Interest

The authors declare no conflict of interest.

REFERENCES

1. United Nations. Sustainable Development. 2022 [cited 2022 Nov 14]. The Sustainable Development Goals Report 2022. Available from: <https://sdgs.un.org/goals/goal3>
2. Hoffman M, Mofolo I, Salima C, Hoffman I, Zadrozny S, Martinson F, et al. Utilization of family members to provide hospital care in Malawi: the role of hospital guardians. *Malawi Med J.* 2012;24(4):74–8.
3. Shangwa R. An investigation into the causes of understaffing of registered nurses in mission hospitals: A case for Mashoko Mission Hospital. 2015;
4. Bradley S, Kamwendo F, Chipeta E, Chimwaza W, de Pinho H, McAuliffe E. Too few staff, too many patients: a qualitative study of the impact on obstetric care providers and on quality of care in Malawi. *BMC Pregnancy Childbirth.* 2015;15(1):1–10.
5. World Health Organization. World health statistics 2022: monitoring health for the SDGs, sustainable development goals [Internet]. 2022 May [cited 2022 Nov 16] p. 69–70. Available from: <https://www.who.int/publications/i/item/9789240051157>
6. World Health Organization. Global strategy on human resources for health: Workforce 2030 [Internet]. 2020 Jul [cited 2022 Sep 20]. Available from: <https://www.who.int/publications/i/item/9789241511131>
7. Auslander GK. Family caregivers of hospitalized adults in Israel: A point-prevalence survey and exploration of tasks and motives. *Res Nurs Health.* 2011;34(3):204–17.
8. Ambrosi E, Biavati C, Guarnier A, Barelli P, Zambiasi P, Allegrini E, et al. Factors affecting in-hospital informal caregiving as decided by families: Findings from a longitudinal study conducted in acute medical units. *Scand J Caring Sci.* 2017;31(1):85–95.

9. Phiri PGMC, Kafulafula U, Chorwe-Sungani G. Registered Nursesâ€™ Experiences Pertaining to Family Involvement in the Care of Hospitalised Children at a Tertiary Government Hospital in Malawi. *Afr J Nurs Midwifery*. 2017;19(1):131–43.
10. Basu L, Frescas R, Kiwelu H. Patient guardians as an instrument for person centered care. *Glob Health*. 2014;10(1):1–3.
11. Wild KJ. Maternity waiting homes and the shaping of maternal health policy in Timor-Leste. Charles Darwin University (Australia); 2009.
12. Kapesa LCS. Assessment of the quality of care in maternity waiting homes (MWHs) in Mulanje District, Malawi. *Malawi Med J*. 2018;30(2):103–10.
13. Eckermann E, Deodato G. Maternity waiting homes in Southern Lao PDR: the unique ‘silk home’. *J Obstet Gynaecol Res*. 2008;34(5):767–75.
14. Lori JR, Wadsworth AC, Munro ML, Rominski S. Promoting access: the use of maternity waiting homes to achieve safe motherhood. *Midwifery*. 2013;29(10):1095–102.
15. World Health Organization. WHO recommendations on health promotion interventions for maternal and newborn health 2015 [Internet]. 2025 Jan [cited 2022 Nov 14]. Available from: <https://www.who.int/publications/i/item/9789241508742>
16. Kebede Y, Abamecha F, Endalew C, Aman M, Tamirat A. User’s Satisfaction with Maternity Waiting Home Services in Jimma Zone, Oromia, Ethiopia: Implications for Maternal and Neonatal Health Improvement. *J Women’s Health Care*. 2019;8(464):2167–0420.
17. McIntosh N, Gruits P, Opper E, Shao A. Built spaces and features associated with user satisfaction in maternity waiting homes in Malawi. *Midwifery*. 2018;62:96–103.

18. Kadzuwa BR. The use of maternity waiting homes at Chiradzulu District Hospital, Southern Malawi. 2016;
19. Sundu S. Experiences of antenatal mothers staying in a maternity waiting home at Malamulo Mission Hospital in Thyolo. 2011;
20. Henry EG, Semrau K, Hamer DH, Vian T, Nambao M, Mataka K, et al. The influence of quality maternity waiting homes on utilization of facilities for delivery in rural Zambia. *Reprod Health*. 2017;14:1–10.
21. Sialubanje C, Massar K, Hamer DH, Ruitter RA. Personal and environmental factors associated with the utilisation of maternity waiting homes in rural Zambia. *BMC Pregnancy Childbirth*. 2017;17:1–14.
22. Gaym A, Pearson L, Soe K. Maternity waiting homes in Ethiopia--three decades experience. *Ethiop Med J*. 2012;50(3):209–19.
23. Penn-Kekana L, Pereira S, Hussein J, Bontogon H, Chersich M, Munjanja S, et al. Understanding the implementation of maternity waiting homes in low-and middle-income countries: a qualitative thematic synthesis. *BMC Pregnancy Childbirth*. 2017;17(1):1–12.
24. KoboToolbox. KoboToolbox [Internet]. [cited 2022 Sep 20]. Available from: <https://www.kobotoolbox.org/>
25. DFID. Tools for Development Version 15.1 [Internet]. 2003 [cited 2023 Aug 2]. Available from: <https://webarchive.nationalarchives.gov.uk/ukgwa/+http://www.dfid.gov.uk/Documents/publications/toolsfordevelopment.pdf>

26. Hogan U, Bingley A, Morbey H, Walshe C. The experience of informal caregivers in providing patient care in hospitals in low-and middle-income countries: A qualitative meta-synthesis. *J Health Serv Res Policy*. 2022;27(4):321–9.
27. Determeijer JJ, Leopold SJ, Spijker R, Agyemang C, van Vugt M. Family participation to enhance care and tackle health worker shortages in resource-limited hospitals: A systematic review. *J Glob Health*. 2023;13.
28. Gwaza E, Msiska G. Family involvement in caring for inpatients in acute care hospital settings: A systematic review of literature. *SAGE Open Nurs*. 2022;8:23779608221089540.
29. Gwaza E, Maluwa V, Kapito E, Sakala B, Mwale R, Haruzivishe C, et al. Patient guardian: concept analysis. *Int J Innov Res Dev*. 2017;6(8):333–7.
30. Greene SM, Tuzzio L, Cherkin D. A framework for making patient-centered care front and center. *Perm J*. 2012;16(3):49.
31. Scott NA, Kaiser JL, Vian T, Bonawitz R, Fong RM, Ngoma T, et al. Impact of maternity waiting homes on facility delivery among remote households in Zambia: protocol for a quasiexperimental, mixed-methods study. *BMJ Open*. 2018;8(8):e022224.
32. Fontanet CP, Fong RM, Kaiser JL, Bwalya M, Ngoma T, Vian T, et al. A qualitative exploration of community ownership of a maternity waiting home model in rural Zambia. *Glob Health Sci Pract*. 2020;8(3):344–57.
33. Lodenstein E, Molenaar JM, Ingemann C, Botha K, Mkandawire JJ, Liem L, et al. “We come as friends”: approaches to social accountability by health committees in Northern Malawi. *BMC Health Serv Res*. 2019;19:1–14.

34. Mulenga B. Adherence to cholera interventions: associated factors, enablers and barriers in Chipata and George compounds of Lusaka, Zambia. 2019;
35. Pickering AJ, Davis J. Freshwater availability and water fetching distance affect child health in sub-Saharan Africa. *Environ Sci Technol*. 2012;46(4):2391–7.
36. Shiras T, Cumming O, Brown J, Muneme B, Nala R, Dreibelbis R. Shared latrines in Maputo, Mozambique: exploring emotional well-being and psychosocial stress. *BMC Int Health Hum Rights*. 2018;18(1):1–12.
37. Islam MS, Luby SP, Sultana R, Rimi NA, Zaman RU, Uddin M, et al. Family caregivers in public tertiary care hospitals in Bangladesh: risks and opportunities for infection control. *Am J Infect Control*. 2014;42(3):305–10.
38. Sadigh M, Nawagi F, Sadigh M. The economic and social impact of informal caregivers at Mulago National Referral Hospital, Kampala, Uganda. *Ann Glob Health*. 2016;82(5):866–74.
39. Amiresmaili M, Emrani Z. Informal caregivers in hospitals: Opportunities and threats. *Int J Health Plann Manage*. 2018;33(4):880–9.
40. MoH. GOVERNMENT OF THE REPUBLIC OF MALAWI Health Sector Strategic Plan II 2017-2022 [Internet]. 2017 [cited 2023 Aug 31]. Available from: https://www.healthdatacollaborative.org/fileadmin/uploads/hdc/Documents/Country_documents/HSSP_II_Final_HQ_complete_file.pdf
41. Malawi Government. Health Sector Strategic Plan III 2023-2030 [Internet]. 2022 Jan [cited 2023 Sep 1]. Available from: <https://nkhokwe.kuhes.ac.mw/items/9e80e747-f125-433f-b6fe-16d85da38ea9>

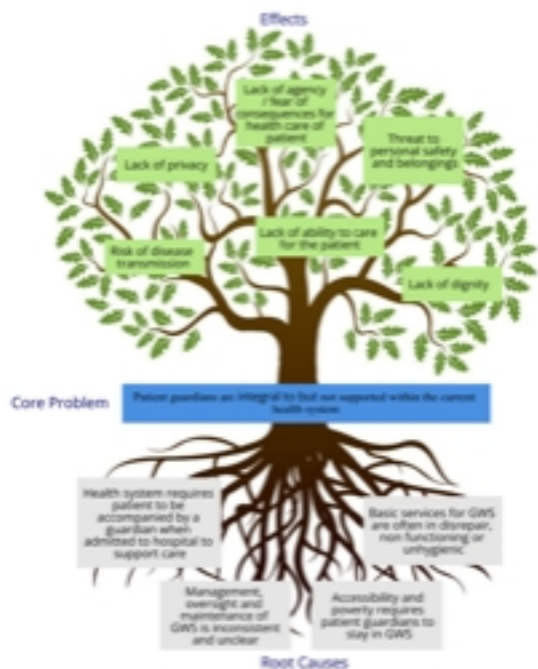
42. Malawi Government. Ministry of Health, National Health Policy [Internet]. 2023 [cited 2023 Sep 1]. Available from: <https://www.health.gov.mw/download/national-health-policy-2/>
43. Grootaert C, Van Bastelaer T. Understanding and measuring social capital: A synthesis of findings and recommendations from the social capital initiative. Vol. 24. World Bank, Social Development Family, Environmentally and Socially ...; 2001.
44. Malolo R, Kumwenda S, Chidziwisano K, Kambala C, Morse T. Social outcomes of a community-based water, sanitation and hygiene intervention. *J Water Sanit Hyg Dev.* 2021;11(3):483–93.
45. Rippon S, Beattie TK, Lungu K, Kumwenda S, Morse T. Social capital insights from Healthy Settings needs assessment in Malawi. *PLoS One.* 2018;13(10):e0206156.

APPENDIX 1: Characteristics of the patient guardians (n=221)

Variable	Percentage (n=221)
Guardian's relationship to patient	
Brother	13.55
Daughter	39.25
Daughter in law	4.21
Mother	3.74
Sister	13.08
Son	9.35
Others (Wife, Grandchild, sister-in-law, mother-in-law, uncle, and father)	16.82
Level of education	
Never attended	23.53
Primary	62.44
Secondary	13.12
Tertiary	0.91



Figure



Figure