

1
2 **Gestational diabetes as a risk factor for GBS maternal rectovaginal**
3 **colonization: a systematic review and meta-analysis**
4

5 Vicki Mercado-Evans^{1,2}, Jacob J. Zulk¹, Zainab A. Hameed¹, and Kathryn A. Patras^{1,3*}

6 ¹Department of Molecular Virology and Microbiology, Baylor College of Medicine,
7 Houston, TX 77030, USA.

8 ²Medical Scientist Training Program, Baylor College of Medicine, Houston, TX 77030,
9 USA.

10 ³Alkek Center for Metagenomics and Microbiome Research, Baylor College of Medicine,
11 Houston, TX 77030, USA.

12
13 * **Corresponding author:** K. Patras, PhD, Department of Molecular Virology and
14 Microbiology, Alkek Center for Metagenomics and Microbiome Research, Baylor College
15 of Medicine, One Baylor Plaza, MS 385, Houston, TX, 77030, USA
16 email: katy.patras@bcm.edu, phone: 713-798-5732
17

18 **Key words:** Group B *Streptococcus*, *Streptococcus agalactiae*, gestational diabetes,
19 diabetes mellitus, type 1 diabetes, type 2 diabetes, vaginal colonization, neonatal
20 outcomes, vaginal microbiome
21
22
23
24
25
26
27
28
29
30
31
32
33
34
35
36
37
38
39
40
41
42
43
44
45

46 **ABSTRACT**

47 **Background**

48 Maternal rectovaginal colonization by group B *Streptococcus* (GBS) increases the risk
49 of perinatal GBS disease that can lead to death or long-term neurological impairment.
50 Factors that increase the risk of rectovaginal GBS carriage are incompletely understood
51 resulting in missed opportunities for detecting GBS in risk-based clinical approaches.
52 There is a lacking consensus on whether gestational diabetes mellitus (GDM) is a risk
53 factor for rectovaginal GBS. This systematic review and meta-analysis aims to address
54 current conflicting findings and determine whether GDM should be clinically considered
55 as a risk factor for maternal GBS colonization.

56

57 **Methods**

58 Peer-reviewed studies that provided GDM prevalence and documented GBS vaginal
59 and/or rectal colonization in women with and without GDM were included in this
60 analysis.

61 From study inception to October 30, 2023, we identified 6,275 relevant studies from
62 EMBASE and PUBMED of which 19 were eligible for inclusion. Eligible studies were
63 analyzed and thoroughly assessed for risk of bias with a modified Newcastle-Ottawa
64 Scale that interrogated representativeness and comparability of cohorts, quality of
65 reporting for GDM and GBS status, and potential bias from other metabolic diseases.
66 Results were synthesized using STATA 18 and analyzed using random-effects meta-
67 analyses.

68

69 **Results**

70 Studies encompassed 266,706 women from 10 different countries, with study periods
71 spanning from 1981 to 2020. Meta-analysis revealed that gestational diabetes is
72 associated with a 16% increased risk of rectovaginal GBS carriage (OR 1.16, CI 1.07-
73 1.26, $P = 0.003$). We also performed subgroup analyses to assess independent effects
74 of pregestational vs. gestational diabetes on risk of maternal GBS carriage.
75 Pregestational diabetes (Type 1 or Type 2 diabetes mellitus) was also associated with
76 an increased risk of 76% (pooled OR 1.76, CI 1.27-2.45, $P = 0.0008$).

77

78 **Conclusions**

79 This study achieved a consensus among previously discrepant observations and
80 demonstrated that gestational diabetes and pregestational diabetes are significant risk
81 factors for maternal rectovaginal carriage of GBS. Recognition of GDM as a risk factor
82 during clinical decisions about GBS screening and intrapartum antibiotic prophylaxis
83 may decrease the global burden of GBS on maternal-perinatal health.

84

85

86

87

88

89

90

91

92

93 INTRODUCTION

94 Group B *Streptococcus* (GBS) remains a leading cause of neonatal morbidity and
95 mortality across the globe despite nearly two decades of systematic implementation of
96 preventative approaches that include universal maternal screening or risk-based
97 administration of antibiotics during delivery[1]. GBS colonizes the vaginal and/or
98 gastrointestinal tract of about 18% of pregnant women[2, 3]. Neonates can acquire GBS
99 during passage through the vaginal canal during delivery, and GBS also has the
100 capacity to ascend into the uterine-fetal space before parturition. While some women
101 and their neonates are colonized without symptoms, GBS can cause devastating
102 complications and disease such as spontaneous abortion, preterm labor, stillbirth, and
103 neonatal sepsis and meningitis[1, 4]. The mechanisms driving the divergence in GBS
104 pathogenic vs. commensal behavior is poorly understood. Currently, the following
105 maternal factors are clinically recognized for increasing the risk of GBS neonatal
106 disease and are used to identify women who should be given intrapartum antibiotic
107 prophylaxis (IAP): 1) previous infant with early-onset GBS disease (EOGBS), 2) GBS
108 bacteriuria during the current pregnancy, 3) temperature > 38 °C during labor, 4)
109 prolonged rupture of membranes (PROM) > 18 hours, or 5) delivery at < 37 weeks of
110 gestation[5]. Some countries practice this risk-based approach and others implement
111 universal screening of women around 35 weeks of gestation, with subsequent IAP for
112 those who have rectovaginal GBS carriage. Screening based approaches are
113 associated with enhanced protection against neonatal GBS early onset disease (EOD;
114 occurring in the first week of life) compared to risk-based strategies[5], which suggests

115 that we have yet to understand all of the maternal factors that predict GBS disease.
116 Additionally, up to 46% of cases of EOD occur in the absence of the risk factors
117 currently used for clinical decision making[5-7].

118
119 One possible additional risk factor for maternal rectovaginal GBS colonization is
120 gestational diabetes mellitus (GDM) which affects approximately 14% of pregnancies
121 worldwide[8]. GDM, diabetes that acutely develops during pregnancy, is a state of
122 heightened insulin resistance, insufficient pancreatic insulin production, hyperglycemia,
123 immune dysregulation, and altered vaginal microbial composition[9-12]. This systemic
124 disruption to maternal physiology leads to an increased risk of complications including
125 preterm birth, pre-eclampsia, and a long-term increased risk of cardiovascular disease
126 in both women and their children. In clinical cohort studies, infants born to women with
127 gestational diabetes are at greater risk of early onset culture-verified GBS sepsis[13],
128 late onset clinical sepsis[14] and extended hospital stay[15]. Considering that
129 rectovaginal GBS carriage is the primary risk factor for GBS neonatal sepsis, women
130 with GDM may have greater GBS colonization rates thereby imparting increased risk of
131 neonatal disease. Observational clinical studies have reported conflicting findings on the
132 association between diabetes (pregestational Type 1 or Type 2 and GDM) and GBS
133 carriage; some have found increased risk of GBS colonization[16-21] in diabetic
134 pregnant women (pregestational and/or gestational), while others found no
135 association[15, 22, 23]. Several of these studies did not specifically distinguish
136 pregestational (Type 1 or Type 2 DM) from GDM. Although these metabolic diseases

137 share several features, the acuity and specificity to pregnancy of GDM lends unique
138 insight into the pathogenic potential of group B *Streptococcus*.

139 The aim of this study was to conduct a systematic review and meta-analysis of the risk
140 for rectovaginal GBS carriage in women affected by GDM. Resolving whether GDM is
141 an independent risk factor for maternal GBS colonization is essential for closing the gap
142 in current IAP approaches; a critical step towards reducing the global burden of GBS-
143 associated neonatal morbidity and mortality.

144

145 **MATERIALS AND METHODS**

146 **Search strategy and study selection**

147 Studies were identified through a database search that included PubMed and EMBASE,
148 which encompassed MEDLINE and preprints as sources (**Fig. 1**). The search strategy
149 implemented search terms intended to capture two kinds of studies: 1) Those that
150 specifically assessed GBS maternal colonization and/or neonatal transmission in
151 women with gestational diabetes, and 2) studies on GBS maternal colonization
152 prevalence which included information about gestational diabetic status and respective
153 GBS status.

154

155 As such, a combination of the following search terms was implemented: gestational
156 diabetes or GDM, chorioamnionitis, newborn and sepsis or cocci and sterile site, and
157 group b streptococcus or GBS or streptococcus agalactiae, English, humans. The
158 following search terms were used as filters followed by the word not: in vitro, ex vivo,
159 animal, tilapia, zebra fish, bovine, breast milk, phylogeny, case study, cells, case report,

160 urinary tract infection, non-pregnancy, endocarditis, murine, mouse, primate. Reviews,
161 conference abstracts and editorials were excluded from our search. The literature
162 search was restricted to human studies published in English, with no study period
163 restrictions. The last query was performed on 10/30/2023. Titles and abstracts were
164 screened for adherence to the inclusion and exclusion criteria detailed below. This study
165 was not registered, but the Preferred Reporting Items for Systematic Reviews and
166 Meta-Analyses (PRISMA) was used as a guideline for this systematic review and meta-
167 analysis.

168

169 **Inclusion and exclusion criteria**

170 The inclusion criteria for this study were: peer-reviewed studies that documented GBS
171 vaginal and/or rectal colonization in expectant mothers, with information about the
172 proportion of women who were clinically diagnosed with GDM. Studies were required to
173 provide the proportion of women who did not have GDM. We included studies that
174 potentially had women with pregestational diabetes in the control, non-GDM, group but
175 we stratified analyses accordingly. Reporting of GDM diagnosis and maternal GBS
176 vaginal and/or rectal colonization was accepted through medical records or diagnosis
177 from medical professionals. Studies were included irrespective of sample type used to
178 determine GBS colonization (vaginal, rectal, or perianal region) and studies employing
179 molecular or biochemical detection of GBS were included. Studies with self-collected
180 vaginal swab samples ($n = 1$) were included. Additionally, observational, baseline data
181 from interventional, case-control, retrospective and prospective, cross sectional and
182 cohort studies were all included. The exclusion criteria for this study were: case studies,

183 reviews, or letters to the editor, lack of a GBS negative or non-GDM control group,
184 published in a language other than English, studies that did not explicitly state diabetes
185 type (GDM vs. pregestational diabetes: Type 1 or Type 2 DM), or missing critical
186 information such as exclusion/inclusion criteria or GBS and/or GDM prevalence in the
187 study population. For relatively contemporary studies (published in the past decade)
188 that did not specify diabetes type, we emailed corresponding authors to acquire
189 information about the number of participants that had GDM vs. Type 1 vs. Type 2
190 diabetes and their GBS status. One reviewer screened titles and abstracts, and three
191 independent reviewers screened full texts to assess studies for eligibility. Reasons for
192 exclusion of each eligible study are provided (**Supplemental table 1**).

193

194 **Data extraction and risk of bias assessment**

195 Two independent reviewers extracted data including: study characteristics, the number
196 of participants in each group, and the number of GBS positive and negative cases in
197 GDM, non-GDM and pregestational diabetic populations, odds ratios (OR), GBS
198 detection method, GDM diagnostic criteria, gestational age at time of GBS screen and
199 any relevant findings on maternal and/or neonatal outcomes.

200

201 All eligible studies were assessed for quality and risk of bias by two independent
202 reviewers via an adapted Newcastle-Ottawa Scale[24] (**Supplemental table 2**) which
203 focused on four broad criteria: 1) How representative the groups were of the greater
204 communities from which the study was conducted, 2) comparability of the groups to
205 each other with respect to various characteristics (maternal age, BMI, racial/ethnic

206 representation, socioeconomic status, etc.), 3) Quality of outcome assessment
207 (ascertainment of GBS and GDM status), and 4) Potential of bias from other metabolic
208 diseases in each group such as obesity and pregestational diabetes (in non-GDM
209 control group). Each assessment category was scored, and the sum was used to
210 determine overall quality and risk of bias for each study. Any discrepancies greater than
211 2 points for any category were resolved via a discussion to achieve consensus. A total
212 score ≤ 3 was considered low bias, > 3 and ≤ 6 indicated moderate bias, and ≥ 6 was
213 classified as high risk of bias.

214

215 **Data synthesis and analysis**

216 Unadjusted ORs were calculated for studies in which only prevalence data were
217 provided, otherwise reported ORs for GDM or pregestational diabetes were utilized. OR
218 calculation and analysis were performed using STATA 18. To calculate ORs, we
219 compared the odds of rectovaginal GBS carriage in women with GDM versus women
220 without GDM. For the sub-analysis of women with pregestational diabetes, we
221 compared the odds of rectovaginal GBS carriage to nondiabetic women, or to women
222 with GDM. For sub-analysis of pregestational diabetes, Piper et al., 1999[15] could not
223 be included because this study accounted for effects of pregestational diabetes by
224 excluding this population entirely from their study. Forest plots display prevalence,
225 individual ORs and 95% confidence intervals (CI) and meta-analysis of pooled ORs with
226 random effects modeling. The I^2 index was used to assess the impact of study
227 heterogeneity on study estimate variance[24], with low, moderate and high
228 heterogeneity indicated by I^2 of 25%, 50% and 75% respectively[25]. Publication bias

229 was assessed with funnel plots of the ORs (natural logarithm) against the inverse of the
230 standard error and Egger's regression test, with $P < 0.05$ indicating a significantly
231 asymmetric funnel plot and thus significant publication bias.

232

233 **RESULTS**

234 **Study characteristics**

235 The initial search identified 6,275 studies, of which 65 articles passed screening and
236 were subjected to full-text assessment for eligibility (**Fig. 1**). 19 articles with study
237 periods spanning from 1981 to 2020 were eligible based on the aforementioned criteria,
238 with exclusion of 46 studies for various reasons (**Supplemental table 1**). **Table 1**
239 provides a summary of study characteristics. The total number of women included in
240 this systematic review and meta-analysis is 266,706; there were 18,715 women with
241 GDM, 2,598 with pregestational diabetes, and 195,545 without GDM. The studied
242 populations are representative of many communities across the globe with inclusion of
243 Australia, Brazil, China, Finland, Lebanon, Mexico, Morocco, Nigeria, Spain, and the
244 United States. Of these countries, none were of low-income, three were of lower-middle
245 income, three were of upper-middle income, and four were of high-income as
246 determined by the 2023 World Bank guidelines[26]. 6/19 were multicenter studies and
247 routine screening for GBS colonization and administration guidelines for intrapartum
248 antibiotic prophylaxis (IAP) was not an established practice at the time for 64% of
249 studies. Studies also consisted of a mix of prospective (57%), retrospective (14%),
250 cross-sectional (5%), case-control (14%), and population-based cohort (10%) study
251 designs. Rectovaginal, vaginal and/or perineal GBS carriage was determined by culture

252 for all studies: 14 studies performed rectovaginal sampling, 3 solely assessed vaginal
253 carriage, and 2 studies did not specify. 5 studies performed culturing and molecular or
254 biochemical identification as recommended by CDC guidelines whereas 14 studies had
255 methods incongruent with guidelines or did not provide enough detail. 6 were found to
256 have low risk of bias, 8 had moderate risk of bias, and 5 had high risk of bias (**Table 1**
257 **and Supplemental table 3**).

258 **Association between gestational diabetes and maternal GBS colonization**

259 A meta-analysis of the association between gestational diabetes and maternal
260 rectovaginal GBS carriage revealed that women with GDM are 16% more likely to be
261 colonized by GBS compared to women without GDM (pooled OR 1.16, CI 1.07-1.26, P
262 = 0.003) (**Fig. 2**). Heterogeneity of all studies was moderate ($I^2= 34.9$, $P = 0.02$). A
263 significant driver of heterogeneity was whether the prevalence of pregestational
264 diabetes was accounted for in the study population; sub-analysis revealed that when
265 pregestational diabetes prevalence was not documented, and possibly present in the
266 non-GDM control group, women with GDM had a 43% increased risk of GBS
267 colonization (OR 1.43, CI 1.08-1.9, $P = 0.01$). Study heterogeneity was significantly
268 greater among this subset of studies ($I^2= 67.8$, $P = 0.02$). When pregestational diabetes
269 prevalence is accounted for (thus reliably excluded from the non-GDM control group),
270 study heterogeneity is mitigated ($I^2= 27$, $P = 0.10$), and women with GDM have a 13%
271 increased risk of GBS colonization compared to the non-diabetic control group (OR
272 1.13, CI 1.03-1.24, $P = 0.01$) (**Fig. 2**).

273

274 **Association between pregestational diabetes and maternal GBS colonization.**

275 We performed an additional sub-analysis to determine the independent association
276 between pregestational diabetes and maternal GBS carriage, which revealed that
277 women with pregestational diabetes have a 76% increased risk of rectovaginal GBS
278 carriage compared to non-diabetic women (**Fig. 3**) (pooled OR 1.76, CI 1.27-2.45, $P =$
279 0.0008). There was a high degree of heterogeneity between studies ($I^2 = 78.5\%$, $P =$
280 0.01). Appreciating distinct pathophysiology and outcomes for women with
281 pregestational diabetes vs. gestational diabetes, we assessed differences in risk of GBS
282 colonization. There was no significant difference in risk of GBS rectovaginal colonization
283 based on diabetes type (**Fig. 4**); women with pregestational diabetes had a similar risk
284 of GBS rectovaginal colonization compared to those with gestational diabetes (pooled
285 OR 1.26, CI 0.96-1.66, $P = 0.09$). Even so, it is possible that differences will resolve with
286 a larger sample size.

287

288 **Publication bias and sensitivity analysis**

289 Visual assessment of the funnel plot (**Fig. 5**) shows asymmetrical distribution of studies,
290 with publication bias confirmed by Egger's test ($P = 0.005$). Sensitivity analysis included
291 complete exclusion of studies that did not document or control for pregestational
292 diabetic prevalence and exclusion of studies with high risk of bias. A meta-analysis was
293 then performed on the remaining 8 studies (Raimer, Ramos, Stapleton, Edwards,
294 Furfaro, Manzanares, Place, McCoy). Findings were robust; gestational diabetes was
295 still associated with a 13% increased risk of rectovaginal GBS colonization (OR 1.13,
296 95% CI 1.02-1.25, $P = 0.02$), without significant shifts in study heterogeneity ($I^2 = 35.4\%$,
297 $P = 0.08$).

298

299 **DISCUSSION**

300 To our knowledge, this is the first systematic review and meta-analysis examining the
301 association between gestational diabetes mellitus and group B streptococcal
302 rectovaginal colonization. We also performed subgroup analyses to assess independent
303 effects of pregestational vs. gestational diabetes on risk of maternal GBS carriage. Our
304 meta-analysis demonstrates that women with GDM have a significant 16% greater risk
305 of being colonized by GBS, which may in part explain the increased risk of sepsis for
306 neonates born to mothers with GDM[13, 14]. Sub-analysis revealed that women
307 pregestational diabetes have a 71% increased risk. There were no differences in risk
308 based on diabetes type, which agrees with observations from prior cohort studies[17,
309 18].

310

311 GDM-mediated perturbations to critical host defenses such as immunity and the vaginal
312 microbiota may mechanistically contribute to this increased susceptibility to GBS
313 carriage. GDM leads to altered neutrophil, NK, T cell and macrophage abundance
314 and/or activity both in the peripheral blood and at the maternal-fetal interface[10, 41-44].
315 While the direct role of the vaginal microbiome in propagating or limiting GBS
316 colonization remains largely unknown, it is well-appreciated that members of the vaginal
317 microbiota play direct and indirect roles in maintaining reproductive health and
318 pregnancy outcomes and *Lactobacillus* dominance is considered a hallmark of an
319 optimal vaginal community[45-49]. During pregnancy, the stability of the vaginal
320 microbiota increases with *Lactobacillus* enrichment and overall lower alpha diversity[50,

321 51]. In non-diabetic pregnancy, non-*Lactobacillus* dominance or dominance by
322 *Lactobacillus gasseri* has been associated with increased risk of GBS colonization[40,
323 52]. GDM disrupts the vaginal microbiota with increased diversity and enrichment of
324 nonoptimal members including *Bacteroides*, *Klebsiella*, *Enterococcus*, and *Enterobacter*
325 and *Staphylococcus*[11, 12, 53], of which *Staphylococcus* has been positively
326 associated with vaginal GBS colonization[54]. Microbial communities inherited by
327 neonates are also impacted by GDM reflected by increased colonization by
328 *Streptococcaceae* and *Enterococcaceae* which may contribute to worse neonatal
329 outcomes upon GBS encounter[11, 55, 56]. Indeed, in a preclinical model of GDM, we
330 recently showed that GDM susceptibility to fetoplacental infection was driven by
331 perturbations to maternal immunity and vaginal microbial communities in addition to
332 pathogenic bacterial adaptations[57].

333
334 The heterogeneity observed in the 19 studies representing 10 different countries were in
335 part explained by the presence of pregestational diabetes as a potential confounder, as
336 revealed by sub-analyses. Other possible drivers of heterogeneity are differences in
337 study populations including: sample size, severity of diabetes, discrepancies in access
338 to prenatal care thereby impacting who was included in hospital or clinic-based studies,
339 differential presence of confounding metabolic disease such as obesity, variation in
340 inclusive representation of underrepresented or under-resourced communities, and
341 geographical variation in GBS prevalence[1]. Differences in severity of diabetes may
342 also explain variation between studies; a recent study found that pregnant women with
343 better glycemic control (Hemoglobin A1c < 6.5%) had a 45% decreased risk of GBS

344 rectovaginal colonization[58]. However, a few studies report contrasting evidence; two
345 reports found no differences in GBS colonization status for pregnant women requiring
346 insulin therapy[59, 60], and another study found no differences in GBS status between
347 pregnant diabetic women requiring greater than 20 U insulin therapy vs. those requiring
348 less than 20 U per day[61]. Thus, the association between maternal GBS colonization
349 and diabetes severity as indicated by glycemic control and medical management
350 (insulin treatment vs. lifestyle modification) requires further study.

351
352 Notable limitations of some of the studies incorporated in this analysis include a lack of
353 information about GDM or pregestational diabetic severity (e.g. HbA1C or need for
354 medical intervention), unstated GDM diagnostic criteria, potential confounding by other
355 metabolic disorders such as obesity, and limited description of GBS detection
356 techniques (although this was a minority of studies). However, these factors were taken
357 into consideration in our assessment of study quality and bias risk. The presence of
358 publication bias is another limitation and may mean that the risk is overestimated as
359 studies with negative findings are less likely to be published. Nevertheless, sensitivity
360 analysis revealed that the association between GDM and GBS carriage remains when
361 high-risk and potentially confounding studies are excluded. Thus, we are confident that
362 our findings withstand the observed limitations.

363
364 **CONCLUSIONS**
365 Ultimately, this systematic review and meta-analysis of 19 studies representing over
366 260,000 women across the globe revealed gestational diabetes as a novel risk factor for

367 maternal rectovaginal colonization by group B *Streptococcus*. Considering that up to
368 46% of neonates with GBS invasive disease are born to women with no currently
369 recognized risk factors for GBS transmission, GDM may be an important risk that is not
370 yet clinically recognized. Ultimately, expanding our knowledge of additional risk factors
371 for GBS neonatal transmission and disease will improve strategies for screening,
372 preventing, and treating fetal and neonatal GBS morbidity and mortality.

373

374 **LIST OF ABBREVIATIONS**

375 GBS: Group B *Streptococcus*

376 IAP: Intrapartum antibiotic prophylaxis

377 EOGBS: Early-onset GBS disease

378 GDM: Gestational diabetes mellitus

379

380 **DECLARATIONS**

381 **Availability of data and materials**

382 The datasets supporting the conclusions of this article are included within the article,
383 and in the cited studies included in the meta-analysis.

384

385 **Competing interests**

386 The authors declare that they have no competing interests.

387

388 **Funding**

389 VME and JZ were supported by NIH F31 awards (AI167547, DK136201-01)
390 respectively. VME was also supported by a scholarship from Baylor Research
391 Advocates for Student Scientists (BRASS) and a Grant for Emerging
392 Researchers/Clinicians Mentorship [58] Program from the Infectious Diseases Society
393 of America (IDSA). JJZ was supported by an NIH T32 award (T32GM136554). Studies
394 were supported by a Burroughs Wellcome Fund Next Gen Pregnancy Initiative
395 (NGP10103), NIH R01 (DK128053), and R21 (AI173448) to KAP.

396

397 **Authors' contributions**

398 KAP and VME conceived and designed the study. VME, JJZ, and ZH, performed
399 systematic review and analyses. VME and KAP analyzed data and interpreted results.
400 KAP secured funding. VME and KAP drafted the manuscript. All authors reviewed and
401 edited the manuscript.

402

403 **REFERENCES**

404

- 405 1. Gonçalves BP, Procter SR, Paul P, Chandna J, Lewin A, Seedat F, Koukounari A,
406 Dangor Z, Leahy S, Santhanam S *et al*: **Group B streptococcus infection**
407 **during pregnancy and infancy: estimates of regional and global burden.**
408 *Lancet Glob Health* 2022, **10**(6):e807-e819.
- 409 2. Kwatra G, Cunnington MC, Merrall E, Adrian PV, Ip M, Klugman KP, Tam WH,
410 Madhi SA: **Prevalence of maternal colonisation with group B streptococcus:**
411 **a systematic review and meta-analysis.** *Lancet Infect Dis* 2016, **16**(9):1076-
412 1084.
- 413 3. Russell NJ, Seale AC, O'Driscoll M, O'Sullivan C, Bianchi-Jassir F, Gonzalez-
414 Guarin J, Lawn JE, Baker CJ, Bartlett L, Cutland C *et al*: **Maternal Colonization**
415 **With Group B Streptococcus and Serotype Distribution Worldwide:**
416 **Systematic Review and Meta-analyses.** *Clin Infect Dis* 2017,
417 **65**(suppl_2):S100-s111.
- 418 4. Schrag SJ, Farley MM, Petit S, Reingold A, Weston EJ, Pondo T, Hudson Jain J,
419 Lynfield R: **Epidemiology of Invasive Early-Onset Neonatal Sepsis, 2005 to**
420 **2014.** *Pediatrics* 2016, **138**(6).

- 421 5. Hasperhoven GF, Al-Nasiry S, Bekker V, Villamor E, Kramer B: **Universal**
422 **screening versus risk-based protocols for antibiotic prophylaxis during**
423 **childbirth to prevent early-onset group B streptococcal disease: a**
424 **systematic review and meta-analysis.** *Bjog* 2020, **127**(6):680-691.
- 425 6. Heath PT, Balfour GF, Tighe H, Verlander NQ, Lamagni TL, Efstratiou A: **Group**
426 **B streptococcal disease in infants: a case control study.** *Arch Dis Child*
427 2009, **94**(9):674-680.
- 428 7. Trijbels-Smeulders M, de Jonge GA, Pasker-de Jong PC, Gerards LJ, Adriaanse
429 AH, van Lingen RA, Kollée LA: **Epidemiology of neonatal group B**
430 **streptococcal disease in the Netherlands before and after introduction of**
431 **guidelines for prevention.** *Arch Dis Child Fetal Neonatal Ed* 2007, **92**(4):F271-
432 276.
- 433 8. Wang H, Li N, Chivese T, Werfalli M, Sun H, Yuen L, Hoegfeldt CA, Elise Powe
434 C, Immanuel J, Karuranga S *et al*: **IDF Diabetes Atlas: Estimation of Global**
435 **and Regional Gestational Diabetes Mellitus Prevalence for 2021 by**
436 **International Association of Diabetes in Pregnancy Study Group's Criteria.**
437 *Diabetes Res Clin Pract* 2022, **183**:109050.
- 438 9. McIntyre HD, Catalano P, Zhang C, Desoye G, Mathiesen ER, Damm P:
439 **Gestational diabetes mellitus.** *Nat Rev Dis Primers* 2019, **5**(1):47.
- 440 10. McElwain CJ, McCarthy FP, McCarthy CM: **Gestational Diabetes Mellitus and**
441 **Maternal Immune Dysregulation: What We Know So Far.** *Int J Mol Sci* 2021,
442 **22**(8).
- 443 11. Wang J, Zheng J, Shi W, Du N, Xu X, Zhang Y, Ji P, Zhang F, Jia Z, Wang Y *et al*:
444 **Dysbiosis of maternal and neonatal microbiota associated with gestational**
445 **diabetes mellitus.** *Gut* 2018, **67**(9):1614-1625.
- 446 12. Cortez RV, Taddei CR, Sparvoli LG, Ângelo AGS, Padilha M, Mattar R, Daher S:
447 **Microbiome and its relation to gestational diabetes.** *Endocrine* 2019,
448 **64**(2):254-264.
- 449 13. Håkansson S, Källén K: **Impact and risk factors for early-onset group B**
450 **streptococcal morbidity: analysis of a national, population-based cohort in**
451 **Sweden 1997-2001.** *Bjog* 2006, **113**(12):1452-1458.
- 452 14. Medugu N, Iregbu KC, Parker RE, Plemmons J, Singh P, Audu LI, Efetie E,
453 Davies HD, Manning SD: **Group B streptococcal colonization and**
454 **transmission dynamics in pregnant women and their newborns in Nigeria:**
455 **implications for prevention strategies.** *Clinical Microbiology and Infection*
456 2017, **23**(9):673.e679-673.e616.
- 457 15. Piper JM, Georgiou S, Xenakis EM, Langer O: **Group B streptococcus**
458 **infection rate unchanged by gestational diabetes.** *Obstet Gynecol* 1999,
459 **93**(2):292-296.
- 460 16. Edwards JM, Watson N, Focht C, Wynn C, Todd CA, Walter EB, Heine RP,
461 Swamy GK: **Group B Streptococcus (GBS) Colonization and Disease among**
462 **Pregnant Women: A Historical Cohort Study.** *Infect Dis Obstet Gynecol* 2019,
463 **2019**:5430493.
- 464 17. Matorras R, Garcia-Perea A, Usandizaga JA, Omenaca F: **Recto-vaginal**
465 **colonization and urinary tract infection by group B streptococcus in the**

- 466 **pregnant diabetic patient. *Acta Obstetricia et Gynecologica Scandinavica* 1988,**
467 **67(7):617-620.**
- 468 18. Ramos E, Gaudier FL, Hearing LR, Del Valle GO, Jenkins S, Briones D: **Group B**
469 **streptococcus colonization in pregnant diabetic women. *Obstet Gynecol***
470 **1997, 89(2):257-260.**
- 471 19. Bey M, Pastorek Ii JG, Miller Jr JM: **Group B streptococcal colonization in the**
472 **diabetic gravida patient. *American Journal of Perinatology* 1992, 9(5-6):425-**
473 **427.**
- 474 20. Chen X, Cao S, Fu X, Ni Y, Huang B, Wu J, Chen L, Huang S, Cao J, Yu W, Ye
475 H: **The risk factors for Group B Streptococcus colonization during**
476 **pregnancy and influences of intrapartum antibiotic prophylaxis on maternal**
477 **and neonatal outcomes. *BMC Pregnancy Childbirth* 2023, 23(1):207.**
- 478 21. Farideh A, Abdolkarim H, Naderi Nasab M: **Comparison of Group B**
479 **Streptococcal Colonization in the Pregnant Diabetic and Non-Diabetic**
480 **Women. *Acta Medica Iranica* 2007, 47(2).**
- 481 22. Siqueira F, Ferreira EM, de Matos Calderon I, Dias A: **Prevalence of**
482 **colonisation by group B streptococcus in pregnant patients in Taguatinga,**
483 **Federal District, Brazil: a cross-sectional study. *Arch Gynecol Obstet* 2019,**
484 **299(3):703-711.**
- 485 23. Lukic A, Napoli A, Santino I, Bianchi P, Nobili F, Ciampittiello G, Nardone MR,
486 Santomauro M, Di Properzio M, Caserta D: **Cervicovaginal bacteria and fungi**
487 **in pregnant diabetic and non-diabetic women: a multicenter observational**
488 **cohort study. *Eur Rev Med Pharmacol Sci* 2017, 21(10):2303-2315.**
- 489 24. Higgins JP, Altman DG, Gøtzsche PC, Jüni P, Moher D, Oxman AD, Savovic J,
490 Schulz KF, Weeks L, Sterne JA: **The Cochrane Collaboration's tool for**
491 **assessing risk of bias in randomised trials. *Bmj* 2011, 343:d5928.**
- 492 25. Higgins JP, Thompson SG: **Quantifying heterogeneity in a meta-analysis. *Stat***
493 **Med** 2002, **21(11):1539-1558.**
- 494 26. **2022-2023 World Bank Country Lending Group guidelines**
495 **[\[https://worldpopulationreview.com/country-rankings/middle-income-countries\]](https://worldpopulationreview.com/country-rankings/middle-income-countries)**
- 496 27. Raimier K, O'Sullivan MJ: **Influence of diabetes on group B Streptococcus**
497 **colonization in the pregnant patient. *J Matern Fetal Med* 1997, 6(2):120-123.**
- 498 28. Stapleton RD, Kahn JM, Evans LE, Critchlow CW, Gardella CM: **Risk factors for**
499 **group B streptococcal genitourinary tract colonization in pregnant women.**
500 ***Obstet Gynecol* 2005, 106(6):1246-1252.**
- 501 29. Chen J, Fu J, Du W, Liu X, Rongkavillit C, Huang X, Wu Y, Wang Y, McGrath E:
502 **Group B streptococcal colonization in mothers and infants in western**
503 **China: Prevalences and risk factors. *BMC Infectious Diseases* 2018, 18(1).**
- 504 30. Moraleda C, Benmessaoud R, Esteban J, López Y, Alami H, Barkat A, Houssain
505 T, Kabiri M, Bezad R, Chaacho S *et al*: **Prevalence, antimicrobial resistance**
506 **and serotype distribution of group B streptococcus isolated among**
507 **pregnant women and newborns in Rabat, Morocco. *Journal of Medical***
508 **Microbiology** 2018, **67(5):652-661.**
- 509 31. Dai W, Zhang Y, Xu Y, Zhu M, Rong X, Zhong Q: **The effect of group B**
510 **streptococcus on maternal and infants' prognosis in Guizhou, China.**
511 ***Bioscience Reports* 2019, 39(12).**

- 512 32. Furfaro LL, Nathan EA, Chang BJ, Payne MS: **Group B streptococcus**
513 **prevalence, serotype distribution and colonization dynamics in Western**
514 **Australian pregnant women.** *Journal of Medical Microbiology* 2019, **68**(5):728-
515 740.
- 516 33. Ji Y, Zhao C, Ma XX, Peppelenbosch MP, Ma Z, Pan Q: **Outcome of a**
517 **screening program for the prevention of neonatal early-onset group B**
518 **Streptococcus infection: A population-based cohort study in inner**
519 **Mongolia, China.** *Journal of Medical Microbiology* 2019, **68**(5):803-811.
- 520 34. Manzanares S, Zamorano M, Naveiro-Fuentes M, Pineda A, Rodríguez-Granger
521 J, Puertas A: **Maternal obesity and the risk of group B streptococcal**
522 **colonisation in pregnant women.** *Journal of Obstetrics and Gynaecology* 2019,
523 **39**(5):628-632.
- 524 35. Zhu Y, Huang J, Lin XZ, Chen C: **Group B Streptococcus Colonization in Late**
525 **Pregnancy and Invasive Infection in Neonates in China: A Population-**
526 **Based 3-Year Study.** *Neonatology* 2019, **115**(4):301-309.
- 527 36. Alfouzan W, Gaddar N, Dhar R, Rabaan AA: **A study of group B streptococcus**
528 **in pregnant women in Lebanon: Prevalence, risk factors, vaginal flora and**
529 **antimicrobial susceptibility.** *Infezioni in Medicina* 2021, **29**(1):85-93.
- 530 37. Huang J, Zheng L, Su Y, Wang F, Kong H, Chang Y, Xin H: **Effects of group B**
531 **streptococcus infection on vaginal micro-ecology and pregnancy**
532 **outcomes of pregnant women in late pregnancy.** *European Journal of*
533 *Obstetrics and Gynecology and Reproductive Biology* 2021, **267**:274-279.
- 534 38. Place K, Rahkonen L, Nupponen I, Kruit H: **Vaginal streptococcus B**
535 **colonization is not associated with increased infectious morbidity in labor**
536 **induction.** *Acta Obstetrica et Gynecologica Scandinavica* 2021, **100**(8):1501-
537 1510.
- 538 39. Del Carmen Palacios-Saucedo G, Rivera-Morales LG, Vazquez-Guillen JM,
539 Caballero-Trejo A, Mellado-Garcia MC, Flores-Flores AS, Gonzalez-Navarro JA,
540 Herrera- Rivera CG, Osuna-Rosales LE, Hernandez-Gonzalez JA *et al*:
541 **Genomic analysis of virulence factors and antimicrobial resistance of**
542 **group B Streptococcus isolated from pregnant women in northeastern**
543 **Mexico.** *PLoS ONE* 2022, **17**(3 March).
- 544 40. McCoy JA, Burriss HH, Gerson KD, McCarthy C, Ravel J, Elovitz MA:
545 **Cervicovaginal Microbial-Immune State and Group B Streptococcus**
546 **Colonization in Pregnancy.** *Am J Perinatol* 2023.
- 547 41. Stoikou M, Grimolizzi F, Giaglis S, Schäfer G, van Breda SV, Hoesli IM, Lapaire
548 O, Huhn EA, Hasler P, Rossi SW, Hahn S: **Gestational Diabetes Mellitus Is**
549 **Associated with Altered Neutrophil Activity.** *Front Immunol* 2017, **8**:702.
- 550 42. Hara Cde C, França EL, Fagundes DL, de Queiroz AA, Rudge MV, Honorio-
551 França AC, Calderon Ide M: **Characterization of Natural Killer Cells and**
552 **Cytokines in Maternal Placenta and Fetus of Diabetic Mothers.** *J Immunol*
553 *Res* 2016, **2016**:7154524.
- 554 43. Mihalic Z, Kindler O, Raftopoulou S, Santiso A, Wadsack C, Heinemann A, Kargl
555 J: **Gestational diabetes mellitus dysregulates the PD-1/PD-L1 axis at the**
556 **feto-maternal interface.** *bioRxiv* 2023:2023.2001.2025.525478.

- 557 44. Kang YE, Yi HS, Yeo MK, Kim JT, Park D, Jung Y, Kim OS, Lee SE, Kim JM,
558 Joung KH *et al*: **Increased Pro-Inflammatory T Cells, Senescent T Cells, and**
559 **Immune-Check Point Molecules in the Placentas of Patients With**
560 **Gestational Diabetes Mellitus.** *J Korean Med Sci* 2022, **37**(48):e338.
- 561 45. Greenbaum S, Greenbaum G, Moran-Gilad J, Weintraub AY: **Ecological**
562 **dynamics of the vaginal microbiome in relation to health and disease.** *Am J*
563 *Obstet Gynecol* 2019, **220**(4):324-335.
- 564 46. Dunlop AL, Satten GA, Hu YJ, Knight AK, Hill CC, Wright ML, Smith AK, Read
565 TD, Pearce BD, Corwin EJ: **Vaginal Microbiome Composition in Early**
566 **Pregnancy and Risk of Spontaneous Preterm and Early Term Birth Among**
567 **African American Women.** *Front Cell Infect Microbiol* 2021, **11**:641005.
- 568 47. Tabatabaei N, Eren AM, Barreiro LB, Yotova V, Dumaine A, Allard C, Fraser WD:
569 **Vaginal microbiome in early pregnancy and subsequent risk of**
570 **spontaneous preterm birth: a case-control study.** *Bjog* 2019, **126**(3):349-358.
- 571 48. Ravel J, Gajer P, Abdo Z, Schneider GM, Koenig SS, McCulle SL, Karlebach S,
572 Gorle R, Russell J, Tacket CO *et al*: **Vaginal microbiome of reproductive-age**
573 **women.** *Proc Natl Acad Sci U S A* 2011, **108 Suppl 1**(Suppl 1):4680-4687.
- 574 49. Zhou X, Bent SJ, Schneider MG, Davis CC, Islam MR, Forney LJ:
575 **Characterization of vaginal microbial communities in adult healthy women**
576 **using cultivation-independent methods.** *Microbiology (Reading)* 2004, **150**(Pt
577 8):2565-2573.
- 578 50. Freitas AC, Chaban B, Bocking A, Rocco M, Yang S, Hill JE, Money DM: **The**
579 **vaginal microbiome of pregnant women is less rich and diverse, with lower**
580 **prevalence of Mollicutes, compared to non-pregnant women.** *Sci Rep* 2017,
581 **7**(1):9212.
- 582 51. DiGiulio DB, Callahan BJ, McMurdie PJ, Costello EK, Lyell DJ, Robaczewska A,
583 Sun CL, Goltsman DS, Wong RJ, Shaw G *et al*: **Temporal and spatial variation**
584 **of the human microbiota during pregnancy.** *Proc Natl Acad Sci U S A* 2015,
585 **112**(35):11060-11065.
- 586 52. Rosen GH, Randis TM, Desai PV, Sapra KJ, Ma B, Gajer P, Humphrys MS,
587 Ravel J, Gelber SE, Ratner AJ: **Group B Streptococcus and the Vaginal**
588 **Microbiota.** *J Infect Dis* 2017, **216**(6):744-751.
- 589 53. Rafat D, Singh S, Nawab T, Khan F, Khan AU, Khalid S: **Association of vaginal**
590 **dysbiosis and gestational diabetes mellitus with adverse perinatal**
591 **outcomes.** *Int J Gynaecol Obstet* 2022, **158**(1):70-78.
- 592 54. Shabayek S, Abdellah AM, Salah M, Ramadan M, Fahmy N: **Alterations of the**
593 **vaginal microbiome in healthy pregnant women positive for group B**
594 **Streptococcus colonization during the third trimester.** *BMC Microbiol* 2022,
595 **22**(1):313.
- 596 55. He Z, Wu J, Xiao B, Xiao S, Li H, Wu K: **The Initial Oral Microbiota of**
597 **Neonates Among Subjects With Gestational Diabetes Mellitus.** *Front Pediatr*
598 2019, **7**:513.
- 599 56. Chen T, Qin Y, Chen M, Zhang Y, Wang X, Dong T, Chen G, Sun X, Lu T, White
600 RA, 3rd *et al*: **Gestational diabetes mellitus is associated with the neonatal**
601 **gut microbiota and metabolome.** *BMC Med* 2021, **19**(1):120.

- 602 57. Mercado-Evans V, Mejia ME, Zulk JJ, Ottinger S, Hameed Z, Serchejian C,
603 Marunde MG, Robertson CM, Ballard MB, Korotkova N *et al*: **Gestational**
604 **diabetes augments group B *Streptococcus* perinatal infection**
605 **through disruptions in maternal immunity and the vaginal microbiota.**
606 *bioRxiv* 2023:2023.2006.2023.546252.
- 607 58. Field C, Bank TC, Spees CK, Germann K, Landon MB, Gabbe S, Grobman WA,
608 Costantine MM, Venkatesh KK: **Association between glycemic control and**
609 **group B streptococcus colonization among pregnant individuals with**
610 **pregestational diabetes.** *Am J Reprod Immunol* 2023, **90**(4):e13779.
- 611 59. Ramos E, Gaudier FL, Hearing LR, Del Valle GO, Jenkins S, Briones D: **Group B**
612 **streptococcus colonization in pregnant diabetic women.** *Obstetrics and*
613 *Gynecology* 1997, **89**(2):257-260.
- 614 60. Pykało-Gawińska D, Zaręba-Szczudlik J, Gawiński C, Stępień A, Dobrowolska-
615 Redo A, Malinowska-Polubiec A, Romejko-Wolniewicz E: **Gestational weight**
616 **gain and glycemic control in GDM patients with positive genital culture.**
617 *Taiwanese Journal of Obstetrics and Gynecology* 2021, **60**(2):262-265.
- 618 61. Bey M, Pastorek JG, 2nd, Miller JM, Jr.: **Group B streptococcal colonization in**
619 **the diabetic gravida patient.** *Am J Perinatol* 1992, **9**(5-6):425-427.

620
621
622
623
624
625
626
627

FIGURE LEGENDS

628 **Figure 1: Study identification, screening, and selection process.** Flow diagram of
629 selection of the included studies.

630

631 **Figure 2: Association of gestational diabetes and GBS rectovaginal colonization.**

632 Forest plot of the association between gestational diabetes and GBS rectovaginal
633 colonization presented as Odds Ratios (OR) for each study and respective 95%
634 confidence intervals (CI). Studies are grouped by those that did not document (top) or
635 did document (bottom) the prevalence of pregestational diabetes in their study
636 population. The number of women with (GBS+) and without (GBS-) rectovaginal GBS
637 carriage are presented for each study. The dotted black line demarcates no effect (OR =

638 1). The OR of individual studies are represented by light purple diamonds with shape
639 size corresponding to the weight of the study as determined by random-effects
640 modeling, and the paired horizontal lines indicate the 95% CI. Pooled ORs for each
641 group are shown by the dark purple diamonds and the orange symbol represents the
642 OR for all studies.

643
644 **Figure 3: Association of pregestational diabetes and GBS rectovaginal**
645 **colonization.** Forest plot of the association between pregestational diabetes and GBS
646 rectovaginal colonization presented as Odds Ratios (OR) for each study and respective
647 95% confidence intervals (CI). The number of women with (GBS+) and without (GBS-)
648 rectovaginal GBS carriage are presented for each study. The dotted black line
649 demarcates no effect (OR = 1). The OR of individual studies are represented by blue
650 circles with shape size corresponding to the weight of the study as determined by
651 random-effects modeling, and the paired horizontal lines indicate the 95% CI. Pooled
652 ORs for each group are shown by the dark blue diamond.

653
654 **Figure 4: Comparison of diabetes types and associations with GBS rectobaginal**
655 **colonization.** Forest plot of the association between pregestational diabetes and GBS
656 rectovaginal colonization relative to women with gestational diabetes, presented as
657 Odds Ratios (OR) for each study and respective 95% confidence intervals (CI). The
658 number of women with (GBS+) and without (GBS-) rectovaginal GBS carriage are
659 presented for each study. The dotted black line demarcates no effect (OR = 1). The OR
660 of individual studies are represented by squares with shape size corresponding to the

661 weight of the study as determined by random-effects modeling, and the paired
662 horizontal lines indicate the 95% CI. Pooled ORs for each group are shown by the dark
663 beige symbol.

664

665 **Figure 5: Risk of bias of included studies.** Funnel plot for visual assessment of
666 publication bias for all included studies. Circles represent individual study estimates (log
667 odds ratio) against the respective standard error. The purple vertical line indicates the
668 pooled OR. The gray lines mark the bounds of a pseudo 95% confidence interval.

669

670

671

672
673
674

Table 1: Characteristics of studies included in this systematic review of the association between gestational diabetes and rectovaginal GBS colonization.

Author, year	Study period	Country	Study Design	Inclusion (I) & Exclusion (E) Criteria	Mean age (SD)	GDM diagnostic criteria and ascertainment	GBS detection method	Potential confounders	Risk of bias
Matorras, 1988[17]	1981-1985	Spain	Prospective	Women randomly selected. No criteria specified.	28.0 (6.1)	Oral GTT around 20 w. Coustan & Lewis Criteria. Pregestational diabetes based on history of diabetes or fasting glycemia >140mg/100mL.	Rectal and vaginal swabs followed by culture detection.	Of the 1,050 patients, 729 had complications that were not specified.	High
Raimer, 1997[27]	11 months but year is not reported	USA	Case-control	I: All pregnant women presenting to the clinic. E: HIV+, history of substance abuse, current STD.	Diabetic 30.6 (6.2) non-diabetic 28.5 (6.8) (P = 0.02)	Oral GTT 24-28 w, considered normal below 140mg/dL, abnormal screen (50 g challenge) was followed by 3h GTT (100g), two elevated values considered abnormal.	Vaginal swab followed by culture detection.	Significant difference in maternal age between diabetic and control groups.	Moderate
Ramos, 1997[18]	January 1995-March 1996	USA	Prospective	I: Singleton gestation, intact membranes at enrollment, otherwise uncomplicated pregnancy. E: HIV+, chronic	Diabetic 27.0 (6.5) non-diabetic 24.6+/- (6.4)	Oral GTT 24-28 w. At least 2 abnormal readings: fasting glucose greater than or equal to 105 mg/dL, 1h	Rectal and vaginal swabs followed by culture detection.	N/A. Regression analyses controlled for maternal age, race, and obesity.	Low

				steroid therapy, cervical incompetence, multifetal gestation.	(<i>P</i> = 0.02)	glucose (50g challenge) greater than or equal to 190 mg/dL, 2h glucose greater than or equal to 165 mg/dL, 3h glucose greater than or equal to 145 mg/dL.			
Piper et al., 1999[15]	January 1992-June 1994 (diabetic cohort); April 1992-December 1992 (nondiabetic cohort)	USA	Prospective	E: Women with previously affected infants and/or pregestational diabetes.	GDM 28.5 (6.2) Non-diabetic 23.6 (5.5) (<i>P</i> <0.05)	Abnormal glucose tolerance test with universal screening.	Rectovaginal swab followed by culture detection.	Diabetic cohort was significantly older, of higher parity, and less likely to deliver vaginally compared to nondiabetic controls.	High
Stapleton et al., 2005[28]	1997-2002	USA	Case-control	I: All singleton gestation births in Washington State. E: Patients with missing data.	Cases 27.6 (6.1) Controls 27.4 (6.2)	Data extracted from hospital records.	ICD codes for confirmed GBS maternal colonization or suspected carrier.	As acknowledged by authors, risk of disease misclassification and cannot distinguish women who were truly GBS negative vs. those who were not screened.	Low

Medugu et al., 2017[14]	May-September 2014	Nigeria	Prospective	I: Third trimester. E: Multifetal gestation, placenta previa, or elective caesarean section.	29.8 (5)	Interviews, questionnaires, and hospital records.	Vaginal and rectal swabs and culture detection with confirmation via PathoDxtra Strep Grouping kit.	Prevalence and effects of comorbidities were not considered.	Moderate
Chen et al., 2018[29]	January-June 2017	Western China	Prospective	I: >35 w gestation routine prenatal care or at the time of delivery. E: Multifetal gestation, GBS culture results not available.	Not reported.	Data extracted from hospital records.	Vaginal and rectal swabs and culture and biochemical detection.	Prevalence of pregestational diabetes not reported, nor other indicators of metabolic stress (BMI).	Low
Moraleda et al., 2018[30]	March-July 2013	Morocco	Prospective	I: 35-37 w who attended general or high-risk prenatal visits. High risk included pre-existing chronic conditions, complications in previous pregnancies, or maternal, fetal, or placental risks in current pregnancy, or women enrolled at time of delivery without membrane rupture or hemorrhage. No exclusion criteria described.	27 +/- 6.15	Demographic, socio-economic, and clinical data collected through standardized questionnaires.	Recto-vaginal swabs and culture detection.	Control group might contain women with pregestational diabetes as this was not mentioned in exclusion criteria and prevalence of pregestational diabetes in GBS carriers and non-carriers was not described.	High

Dai et al., 2019[31]	Not reported	China	Prospective	I: Native (Chinese), 20-46 years old, 35-37 w, no sexual intercourse or antibiotic application within recent 3 months. No exclusion criteria described.	GBS+ 30.04 (3.22) GBS- 30.67 (3.51)	Not reported.	Recto-vaginal swabbing followed by PCR on extracted DNA within 24 hours of collection.	Very strict inclusion criteria and did not assess prevalence of pregestational diabetes, nor differences in BMI.	High
Edwards et al., 2019[16]	January 1, 2003 - December 31, 2015	USA	Retrospective cohort	All pregnant women during the timeframe were eligible. No exclusions.	GBS+ 28.0 (6.2) GBS- 28.7 (6.2)	ICD codes from hospital records.	Used diagnostic codes from any time during pregnancy to determine positivity.		Low
Furfaro et al., 2019[32]	2015-2017	Australia	Prospective cohort	I: 16+ years old, Nulliparous/multiparous, Gestational age of less than 22 w at enrollment, understand, read, and speak English. E: Highly dependent on medical care, cognitive impairment/intellectual disability, illegal drug use, antibiotic/antifungal use within 2 weeks of sample collection, multiple pregnancy (twins, etc.).	32 (16-50)	Not reported.	Self-recto-vaginal swabbing with two swabs at each site. One swab used for multiplex PCR and the other for culture detection.		Low

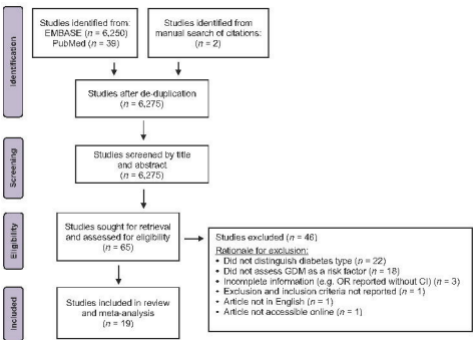
Ji et al., 2019[33]	January 2016 - December 2016	China	Population-based cohort	I: All pregnant women were screened at 35-37 w, but prior to 35 w were also tested if delivery occurred before then. E: Women whose pregnancy did not result in labor.	Not provided .	Hospital records.	Recto-vaginal swab performed by physician followed by RT-PCR and culture detection.		Moderate
Manzanarés et al., 2019[34]	2012-2014	Spain	Case-Control	I: Delivery of a single live fetus after 26 w, BMI and GBS culture results available. E: Stillbirth, or less than 26 w.	GBS+ 30.84 (5.8) GBS- 30.61 (5.66)	Not reported.	Positive culture from a recto-vaginal swab at 35-37 w or GBS bacteriuria any time during pregnancy.	Urine screening replaced culture if positive any time during pregnancy, no description of culture methods.	Moderate
Zhu et al., 2019[35]	April 1, 2014 - March 31, 2017	China	Retrospective cohort (population based)	I: Pregnant women 35-37 w of gestation or with preterm delivery who submitted vaginal swabs. E: Women who did not undergo GBS screening, prenatal diagnosis of fetal malformation, greater or equal to three prior abortions, antibiotic usage in the week prior to admission.	GBS+ 29.7 (4.30) GBS- 29.51 (4.32)	Questionnaire	Vaginal swabs followed by culture on chromogenic agar. Neonates were screened by tracheal secretion, gastric fluid, and blood sample culture.	Rectal swabs were not collected, no PCR was performed.	Moderate

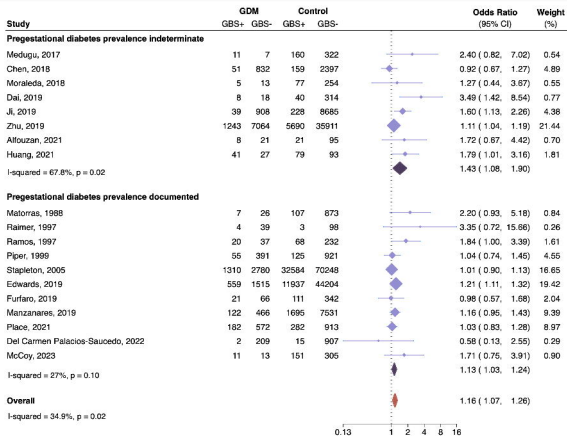
Alfouzan et al., 2021[36]	Not reported	Lebanon	Prospective cross-sectional	Not reported.	Not reported.	Questionnaire utilized to gather sociodemographic and clinical information.	Vaginal swabs followed by culture detection.	Control group might include women with pregestational diabetes. Only vaginal swabs were collected which may underestimate GBS colonization.	Moderate
Huang et al., 2021[37]	June 2019-December 2020	China	Prospective	I: No vaginal GBS colonization before pregnancy, single gestation, viable fetus, no antibiotic use during pregnancy, no sexual activity for 3 days preceding sample collection and no vaginally administered drugs or vaginal lavages 2 weeks before sample collection. E: Malignant tumor, infectious diseases, comorbidities involving heart, liver lungs and other organs, genital tract malformation or incomplete medical records.	Not reported.	Determined from medical records.	Vaginal and rectal swabs followed by PCR detection.	Control group might include women with pregestational diabetes.	Moderate

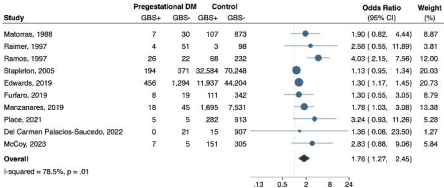
Place et al., 2021[38]	January 2014-December 2017	Finland	Retrospective	I: Women undergoing labor induction, singleton gestation, cephalic presentation, unfavorable cervix, intact amniotic membranes. E: Women for which GBS testing was indeterminant.	31.4 (5.4)	2 hour 75 g oral glucose tolerance test.	Vaginal and rectal swabs PCR detection (Xpert GBS).	All women in this study had an unfavorable cervix.	Moderate
Del Carmen Palacios-Saucedo, et al, 2022[39]	April 2017 - December 2018	Mexico	Prospective	Not reported.	Median and range of GBS colonized: 25 (19-37), median and range of non-colonized: 27 (14-43)	Not reported.	Recto-vaginal swabbing followed by culture and biochemical identification.	No definition of GDM.	High
McCoy et al., 2023[40]	December 2013-February 2017	USA	Secondary analysis of prospective cohort study	I: singleton pregnancy and presented prior to 20 w. E: Major fetal anomaly, HIV positive, history of organ transplant, chronic steroid use.	28.6 (+/- 6.3)	Not reported.	Recto-vaginal swabs followed by culture detection per CDC guidelines	GDM diagnostic criteria and differences in severity of disease may impact findings.	Low

675

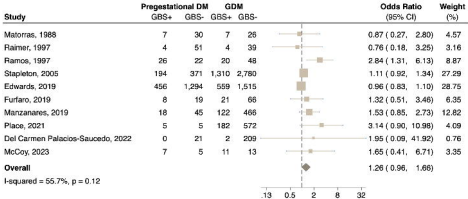
676







Random-effects REML model



Random-effects REML model

