

1 Drivers of geographic patterns in outpatient antibiotic prescribing in 2 the United States

3 Stephen M. Kissler^{1,2†}, Kirstin I. Oliveira Roster^{1,2†}, Rachel Petherbridge³, Ateev Mehrotra⁴, Michael L.
4 Barnett⁵, Yonatan H. Grad^{*1,2}

5
6 ¹. Department of Immunology and Infectious Diseases, Harvard T.H. Chan School of Public Health, Boston MA

7
8 ². Center for Communicable Disease Dynamics, Harvard T.H. Chan School of Public Health, Boston MA

9 ³. Department of Systems Biology, Harvard Medical School, Boston MA

10 ⁴. Department of Health Care Policy, Harvard Medical School, Boston MA

11 ⁵. Department of Health Policy and Management, Harvard T.H. Chan School of Public Health, Boston MA

12
13 † Denotes equal contribution, ordering by coin toss.

14 * Correspondence: ygrad@hsph.harvard.edu

17 **Abstract**

18 Antibiotic prescribing rates vary dramatically across regions in the United States, but the relative
19 importance in prescribing practices versus per capita visit rates in driving this variation remain
20 unclear. Quantifying their relative importance can aid in reducing antibiotic use. Using US medi-
21 cal claims data from 2015-2018 covering over 15 million privately insured adults, we conducted
22 a regression analysis to estimate the relative contribution of outpatient visit rates and per-visit
23 prescribing in explaining variation in outpatient antibiotic prescribing rates across metropolitan
24 statistical areas. Variation in visit rates per capita explained more of the geographic variation in
25 outpatient antibiotic prescribing rates than per-visit prescribing for conditions with high prescrib-
26 ing volume. Efforts to reduce antibiotic use may benefit from addressing the factors driving
27 higher rates of outpatient visits, in addition to continued focus on stewardship.

28 **Introduction.**

29 Reducing antibiotic consumption is a major public health objective. Various interventions have
30 been deployed to ensure that physicians only prescribe antibiotics for appropriate conditions
31 (1,2), yet there remains substantial antibiotic use (3,4). Reducing antibiotic consumption may
32 require looking beyond clinical decisions about a patient’s need for antibiotics to the upstream
33 factors that influence the rates of medical encounters that lead to antibiotic prescriptions, such
34 as the prevalence of infectious diseases and access to care.

35
36 Geographic comparisons can clarify the relationship between these upstream factors and anti-
37 biotic prescribing. In the United States, outpatient antibiotic prescribing differs substantially
38 across regions, with the highest rates in the South and the lowest in the West (5,6). This tracks
39 with the prevalence of some infections, such as gonorrhea (7) and invasive pneumococcal dis-
40 ease (8), raising the possibility that differences in antibiotic prescribing rates may be in part due
41 to differences in disease burden.

42
43 Prior work has found that outpatient visit rates in Massachusetts were closely linked with both
44 geographic (9) and temporal (10) variation in antibiotic prescribing. However, it is not clear
45 whether the same pattern holds nationally. Using a large medical insurance claims database,
46 we examined the association between antibiotic prescriptions per capita and outpatient visit
47 rates versus rates of per-visit prescribing.

48
49 **Methods.**

50 Study design. Data on outpatient visits and pharmacy claims for antibiotic prescriptions were
51 extracted from the Merative™ MarketScan® Commercial Database for the period from 2015 to
52 2018. These data include health insurance claims from outpatient care and pharmacy data as
53 well as enrollment data from large employers and health plans across the United States who
54 provide private healthcare coverage for 15-19 million employees, their spouses, and depend-
55 ents each year (11). Regional, sex, and age distributions in the data were comparable to the
56 whole population (12) (**Supplementary Table S1**).

57
58 For each person, we extracted all available outpatient and pharmacy claims. Outpatient claims
59 included up to two diagnoses coded according to the International Classification of Diseases
60 (ICD). We aggregated these diagnoses into broader classes (“conditions”) using mappings pro-
61 vided by the Agency for Healthcare Research and Quality’s (AHRQ’s) Clinical Classification
62 Software (CCS) (13). Pharmacy claims included a National Drug Code (NDC) identifier. We
63 used these identifiers to extract all new (*i.e.*, non-refill) antibiotic prescriptions (**Supplementary
64 Methods**).

65
66 The MarketScan database does not explicitly link pharmacy claims with the medical conditions
67 that prompted them. To address this, we linked each claim with the most recent outpatient visit
68 that occurred within the prior seven days (**Supplementary Methods**) (9). Prescriptions without
69 outpatient visits in the seven days prior were labelled as “unlinked” and excluded from the anal-
70 ysis. For visits with multiple diagnoses, we chose the medical condition that was most likely to

71 have prompted the antibiotic prescription, following prioritization schemes used in previous stud-
72 ies (9,14) (**Supplementary Table 2**).

73
74 Study outcomes. We estimated (1) the annual number of antibiotic prescriptions per 1,000 indi-
75 viduals, overall, by region, and by metropolitan statistical area (MSA) and (2) the degree to
76 which outpatient visit rates per 1,000 individuals and per-visit prescribing rates each explain ge-
77 ographic variation in antibiotic prescription rates.

78
79 Statistical analysis. We calculated the number of antibiotic prescriptions per person-year, the
80 number of outpatient visits per person-year, and the number of antibiotic prescriptions filled per
81 visit, stratified by medical condition and MSA. To assess the relative contribution of outpatient
82 visit rates and per-visit prescribing to the number of antibiotic prescriptions per person-year, we
83 calculated the coefficients of determination (R^2) for individual regressions of antibiotic prescrip-
84 tions per person-year for each condition on (a) outpatient visits per person-year and (b) antibi-
85 otic prescriptions per visit, with higher R^2 indicating a greater amount of variation explained. We
86 focused on the five conditions with the highest prescribing volume in the main analysis and con-
87 ducted a sensitivity analysis of all conditions (**Supplementary Figures 1 and 2**). Analyses were
88 conducted using R version 4.1.2 and Python version 3.9.13.

89
90 Data and code availability. Full data and code are available at:
91 <https://github.com/gradlab/AbxGeography>

92
93 **Results.**
94 The five conditions with the highest prescribing volume—sinusitis, otitis media, streptococcal
95 pharyngitis, acute bronchitis, and other upper respiratory tract infections (URIs)—accounted for
96 a total annual mean of 263.9 antibiotic prescriptions per 1,000 people, comprising 52.5% of all
97 new antibiotic prescriptions filled between 2015 and 2018 (**Table 1**).

98
99 Antibiotic receipt per 1000 people was highest in the South for each of these conditions except
100 otitis media, which was highest in the Midwest. Outpatient visits rates associated with these
101 conditions varied substantially across regions and were consistently highest in the South, ex-
102 cept for “other URI,” which were highest in the Northeast (**Table 1**). For example, visits *per capi-*
103 *ta* for Streptococcal pharyngitis were more than double in the South compared to the West (38.9
104 and 19 visits per 1000 persons, respectively; **Table 1**). Per-visit prescribing varied less among
105 regions, and there was no region with consistently higher per-visit prescribing (**Table 1**).

106
107 For the five conditions with the highest prescribing volume, outpatient visit rates accounted for a
108 higher degree of the geographic variation in prescribing rates than per-visit prescribing for those
109 conditions (**Figure 1**). For sinusitis, for example, (**Figure 1A**), *per capita* outpatient visits ex-
110 plained a high degree of variation in sinusitis-related antibiotic prescribing rates across MSAs
111 ($R^2 = 0.96$), while per-visit prescribing rates explained relatively less variation ($R^2 = 0.16$, **Sup-**
112 **plementary Figure 2**). Similar patterns were observed for otitis media, streptococcal pharyngitis,
113 and acute bronchitis. For “other URI” (**Figure 1B**), rates of *per capita* outpatient visits and per-visit
114 prescribing described a similar degree of variation in prescribing rates across MSAs ($R^2 = 0.77$

115 and 0.71, respectively; **Supplementary Figure 2**). For intestinal infections and other conditions
116 for which antibiotics were less frequently prescribed, per-visit-prescribing explained more of the
117 variation in antibiotic prescribing rates than did visit rates (**Supplementary Figure 2**).

118
119

120 **Discussion.**

121 Regional differences in antibiotic receipt per capita are driven by the combination of differences
122 in rates of visits and differences in rates of per-visit prescribing. For the most common condi-
123 tions that result in antibiotic prescribing, geographic variation in outpatient visit rates explained
124 most of the variation in antibiotics receipt per capita.

125

126 Prior research has been based on the implicit assumption that regional variation in antibiotic
127 prescribing rates is attributable to differing rates of over-prescribing (14). Our results challenge
128 that assumption. Separating prescribing rates into visit rates (a measure combining disease
129 prevalence and care seeking behavior) and per-visit prescribing rates (a measure of steward-
130 ship) showed that per-visit prescribing does not account for much of the geographic variation in
131 prescription fills for the conditions that account for the majority of antibiotic prescriptions. It is
132 unclear what drives the variation in visit rates. Factors could include socioeconomic status, dis-
133 ease prevalence, vaccination, societal expectations on when one should receive care, and ac-
134 cess to care. Future research should explore these factors in more depth, but such analyses are
135 currently limited by a lack of data that capture these factors together with visits and prescribing
136 at a fine geographic resolution. Investments in improved data collection and data linkage will be
137 necessary to develop effective intervention targets to reduce the risks of antibiotic resistance.

138

139 These results might point to interventions to reduce antibiotic prescribing. For the most common
140 conditions that result in antibiotic prescriptions, interventions may need to target the need for
141 visits to reduce antibiotic use, such as vaccination (15) or reducing delays in care among under-
142 served populations (16).

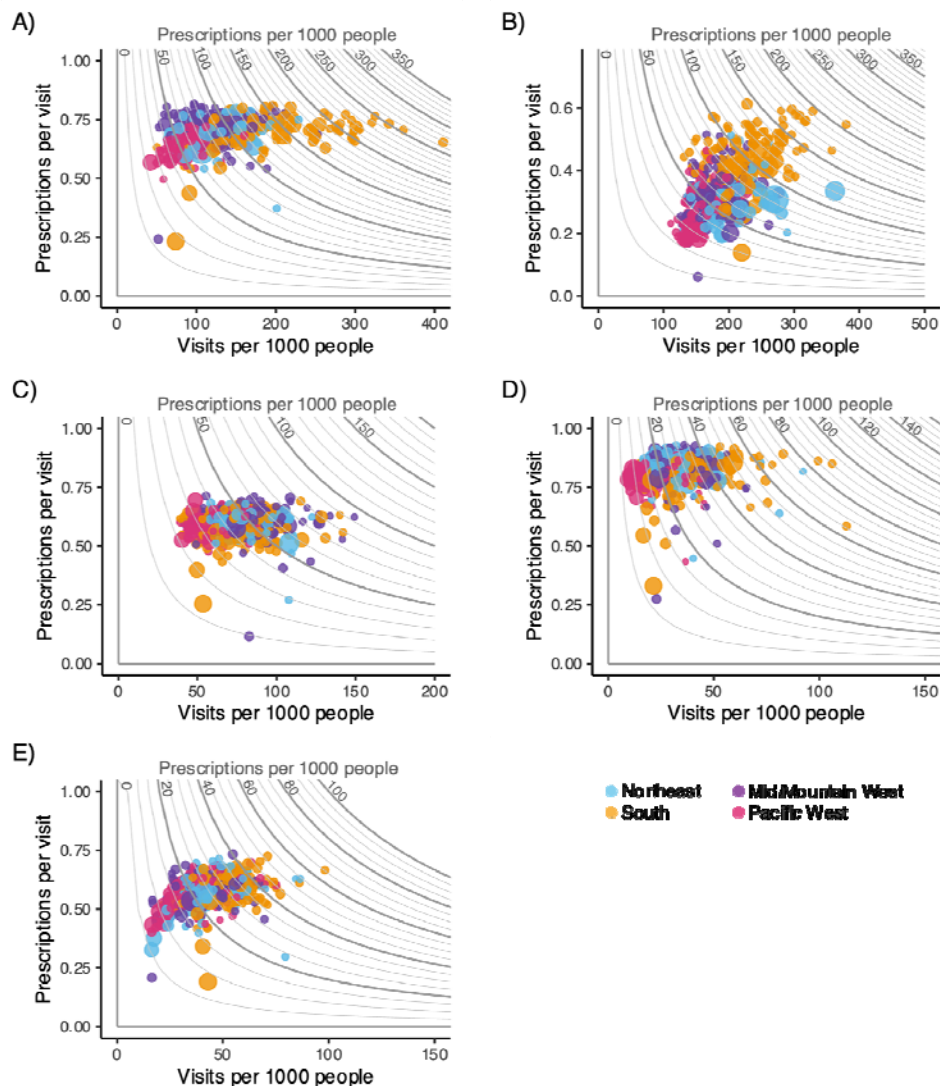
143

144
145 **Table 1. Antibiotic prescribing rates associated with the five most highly prescribed medical con-**
146 **ditions, overall and by US region.** Darker shading indicates greater values, with each variable repre-
147 sented by a different color to account for differences in units.

148

Condition	Antibiotic prescriptions per 1,000 people	Percent of total antibiotic prescriptions	Visits per 1,000 people	Percent of visits with an antibiotic prescription
Sinusitis	97.1	19.3	139.0	69.9
Northeast	81	2.8	120.8	67.1
South	120.3	10.3	170.5	70.5
Midwest	92.1	4.1	127.5	72.2
West	61.9	2.1	93.4	66.2
URI (other)	71.5	14.2	208.1	34.4
Northeast	69.1	2.4	235.3	29.4
South	91.1	7.8	227.9	40.0
Midwest	57.0	2.5	184.4	30.9
West	43.8	1.5	162.5	27.0
Otitis media	44.7	8.9	75.8	59.0
Northeast	44.8	1.5	77.8	57.6
South	47.3	4.1	80.6	58.7
Midwest	48.3	2.1	80.1	60.3
West	33.6	1.2	56.2	59.8
Strep pharyngitis	26.6	5.3	32.2	82.5
Northeast	26.1	0.9	31.5	82.8
South	32.0	2.8	38.9	82.3
Midwest	25.1	1.1	30.0	83.7
West	15.3	0.5	19.0	80.7
Bronchitis (acute)	24.0	4.8	41.8	57.5
Northeast	21.9	0.8	38.8	56.4
South	28.0	2.4	47.9	58.4
Midwest	23.5	1.0	40.6	57.8
West	17.1	0.6	31.0	55.1

149



150
151 **Figure 1. Variation in outpatient visits, per-visit prescribing, and *per capita* antibiotic prescribing**
152 **rates across the US.** (A-E) Contour plots depicting outpatient visit rate per 1,000 individuals (horizontal
153 axis), per-visit prescribing rate (vertical axis), and antibiotic prescribing rate per 1,000 individuals (con-
154 tours, equal to the product of the outpatient visit rate and the per-visit prescribing rate) for MSAs (points)
155 in the United States. Points are colored according to the region where the MSA is geographically situated.
156 Point sizes are proportional to the number of individuals from that MSA in the study population. Contour
157 plots for (A) Sinusitis, (B) other URI, (C) otitis media, (D) streptococcal pharyngitis, and (E) acute bronchi-
158 titis are depicted here. Contour plots for the remaining conditions are included in the **Supplementary Ma-**
159 **terial.**

160

161

162

163
164
165 **Funding statement.** S.M.K received funding from NIH T32 training grant 2 T32 AI 7535-21 A1.
166 K. I. Oliveira Roster gratefully acknowledges the support of the São Paulo Research Foundation
167 (FAPESP) under grant 2021/11608-6. R.P. received funding from NIH T32 training grant T32
168 GM135014. This project has been funded in part by contract 200-2016-91779 from the US Cen-
169 ters for Disease Control and Prevention to YHG. Disclaimer: The findings, conclusions, and
170 views expressed are those of the author(s) and do not necessarily represent the official position
171 of the Centers for Disease Control and Prevention (CDC).

172 **Conflicts of Interest.** The authors declare no conflicts of interest.

173 **Data availability.** Full data and code for this analysis are available at
174 <https://github.com/gradlab/AbxGeography>

175

176 **References.**

- 177 1. Magin P, Davey AR, Davis J. Evidence-based strategies for better antibiotic prescribing. *Aust*
178 *J Gen Pract.* 2022 Jan;51(1/2):21–4.
- 179 2. Zimmerman S, Sloane PD, Bertrand R, Olsho LEW, Beeber A, Kistler C, et al. Successfully
180 Reducing Antibiotic Prescribing in Nursing Homes. *J Am Geriatr Soc.* 2014;62(5):907–12.
- 181 3. Zetts RM, Stoesz A, Smith BA, Hyun DY. Outpatient Antibiotic Use and the Need for In-
182 creased Antibiotic Stewardship Efforts. *Pediatrics.* 2018 Jun;141(6):e20174124.
- 183 4. Olesen SW, Barnett ML, MacFadden DR, Lipsitch M, Grad YH. Trends in outpatient antibiotic
184 use and prescribing practice among US older adults, 2011-15: observational study. *BMJ.*
185 2018 Jul 27;362:k3155.
- 186 5. Hicks LA, Bartoces MG, Roberts RM, Suda KJ, Hunkler RJ, Taylor TH Jr, et al. US Outpa-
187 tient Antibiotic Prescribing Variation According to Geography, Patient Population, and Pro-
188 vider Specialty in 2011. *Clin Infect Dis.* 2015 May 1;60(9):1308–16.
- 189 6. Blue Cross Blue Shield. Antibiotic prescription fill rates declining in the U.S. [Internet]. 2017
190 Aug [cited 2023 Apr 25]. (The Health Of America). Available from:
191 [https://www.bcbs.com/sites/default/files/file-attachments/health-of-america-](https://www.bcbs.com/sites/default/files/file-attachments/health-of-america-report/HoA.Antibiotics.Report.pdf)
192 [report/HoA.Antibiotics.Report.pdf](https://www.bcbs.com/sites/default/files/file-attachments/health-of-america-report/HoA.Antibiotics.Report.pdf)
- 193 7. CDC. Sexually Transmitted Disease Surveillance 2021. 2023; Available from:
194 <https://www.cdc.gov/std/statistics/2021/default.htm>
- 195 8. Rosen JB, Thomas AR, Lexau CA, Reingold A, Hadler JL, Harrison LH, et al. Geographic
196 Variation in Invasive Pneumococcal Disease Following Pneumococcal Conjugate Vaccine In-
197 troduction in the United States. *Clin Infect Dis.* 2011 Jul 15;53(2):137–43.
- 198 9. Kissler SM, Klevens RM, Barnett ML, Grad YH. Childhood Respiratory Outpatient Visits Cor-
199 relate With Socioeconomic Status and Drive Geographic Patterns in Antibiotic Prescribing. *J*
200 *Infect Dis.* 2021 Jun 15;223(12):2029–37.
- 201 10. Kissler SM, Klevens RM, Barnett ML, Grad YH. Distinguishing the Roles of Antibiotic
202 Stewardship and Reductions in Outpatient Visits in Generating a 5-Year Decline in Antibiotic
203 Prescribing. *Clin Infect Dis Off Publ Infect Dis Soc Am.* 2021 May 4;72(9):1568–76.
- 204 11. IBM. MarketScan Database [Internet]. [cited 2023 Apr 25]. Available from:
205 <https://www.ibm.com/watson-health>
- 206 12. U.S. Census Bureau. 2020 Demographic Analysis [Internet]. 2020. Available from: da-
207 [ta.census.gov](https://data.census.gov)
- 208 13. Agency for Healthcare Research and Quality. Clinical Classifications Software [Internet].
209 [cited 2023 Apr 25]. Available from: [https://www.hcup-](https://www.hcup-us.ahrq.gov/toolssoftware/ccs10/ccs10.jsp)
210 [us.ahrq.gov/toolssoftware/ccs10/ccs10.jsp](https://www.hcup-us.ahrq.gov/toolssoftware/ccs10/ccs10.jsp)

- 211 14. Fleming-Dutra KE, Hersh AL, Shapiro DJ, Bartoces M, Enns EA, File TM Jr, et al. Preva-
212 lence of Inappropriate Antibiotic Prescriptions Among US Ambulatory Care Visits, 2010-2011.
213 JAMA. 2016 May 3;315(17):1864–73.
- 214 15. Buckley BS, Henschke N, Bergman H, Skidmore B, Klemm EJ, Villanueva G, et al. Im-
215 pact of vaccination on antibiotic usage: a systematic review and meta-analysis. Clin Microbiol
216 Infect Off Publ Eur Soc Clin Microbiol Infect Dis. 2019 Oct;25(10):1213–25.
- 217 16. Sedaghat AR, Wilke CO, Cunningham MJ, Ishman SL. Socioeconomic disparities in the
218 presentation of acute bacterial sinusitis complications in children. The Laryngoscope.
219 2014;124(7):1700–6.
- 220