

1 **RVOT Reconstruction in d-Transposition of the Great Arteries with Ventricular Septal**  
2 **Defect and Pulmonary Obstruction: Male-Female Differences in Clinical and**  
3 **Homograft Function**

4 Xu. Wang, MD<sup>1</sup>†, Isabelle M. Bennink, Bsc<sup>1</sup>†, Kevin M. Veen, MD, PhD<sup>1</sup>, Pieter C. van de  
5 Woestijne, MD<sup>1</sup>, Carlijn C. E. M. van der Ven, Bsc<sup>1</sup>, Ad J. J. C. Bogers, MD, PhD<sup>1</sup>, Eleni-  
6 Rosalina Andrinopoulou, PhD<sup>2,3</sup>, Wim. A. Helbing, MD, PhD<sup>4</sup>, Johanna J.M. Takkenberg,  
7 MD, PhD<sup>1</sup>

8 <sup>1</sup> *Department of Cardiothoracic Surgery, Erasmus University Medical Center Rotterdam,*  
9 *Rotterdam, The Netherlands.*

10 <sup>2</sup> *Department of Biostatistics, Erasmus University Medical Center Rotterdam, Rotterdam,*  
11 *The Netherlands.*

12 <sup>3</sup> *Department of Epidemiology, Erasmus University Medical Center Rotterdam, Rotterdam,*  
13 *The Netherlands.*

14 <sup>4</sup> *Department of Pediatric Cardiology, Erasmus University Medical Center Rotterdam,*  
15 *Rotterdam, The Netherlands.*

16 † These two authors contributed equally to this paper

17 **Address for correspondence:**

18 \*Corresponding author: Johanna J.M. Takkenberg, MD, PhD.

19 Department of Cardiothoracic Surgery, Erasmus University Medical Center, Room Rg-633,

20 PO Box 2040, 3000 CA Rotterdam, The Netherlands.

21 Tel: +31-10-7035413;

22 Email: [j.j.m.takkenberg@erasmusmc.nl](mailto:j.j.m.takkenberg@erasmusmc.nl)

23 METC approval: MEC-2012-477

24 **ABSTRACT**

25 **Background**

26 This study investigated male-female differences in clinical and homograft outcomes in  
27 dextro-transposition of the great arteries (d-TGA) patients, with ventricular septal defect  
28 (VSD) and pulmonary stenosis/atresia (PS/PA), who underwent right ventricular outflow  
29 tract (RVOT) reconstruction with a homograft.

30 **Methods**

31 All d-TGA with VSD and PS/PA patients receiving a homograft for RVOT reconstruction at  
32 our center from 1986 to 2021 were included. Time-to-event analyses were used for time-  
33 related clinical outcomes and mixed-effects models to characterize homograft function.

34 **Results**

35 Twenty-four patients (16 males) in whom 38 homografts were implanted over time were  
36 included. Median age at the first homograft implantation was 2.56 years [IQR: 1.26-11.31]  
37 and 2.06 years [IQR: 1.28-8.13] for males and females. Two early death (both males) and  
38 five late deaths (2 males) were observed. Twenty-two RVOT reinterventions (19/3 in  
39 males/females) occurred in follow-up (males/females:345.72/173.35 patient-years). The 10-  
40 year survival probability was 87.5% (95% CI: 67.3-100) for females and 87.1% (95% CI:  
41 71.8-100) for males. Freedom from RVOT reintervention at 10-year was 87.5% (95% CI:  
42 67.3-100) for females and 64.9% (95% CI: 47.9-88.0) for males. RVOT peak gradient  
43 increase rate was associated with body growth rate (7.27 [95% CI: 2.08-12.45], P=0.0133).

44 **Conclusions**

45 Substantial male-female differences in clinical and homograft outcomes were found in d-  
46 TGA with VSD and PS/PA patients receiving a homograft for RVOT reconstruction. Male  
47 patients had a higher RVOT reintervention rate and faster progression to homograft stenotic

48 failure compared to females. Oversized homografts might benefit children for the strong  
49 association between rates of homograft stenosis and body growth.

50 **Keywords:** Transposition of the great arteries, male-female differences, homograft, right  
51 ventricular outflow tract

52

53 **Clinical Perspective**

54 1. What is new?

55 • Male patients diagnosed with d-TGA, VSD, and PS/PA demonstrated a significantly  
56 higher rate of RVOT homograft reinterventions and a more rapid progression toward  
57 homograft stenotic failure when compared with their female counterparts.

58 • The male-female differences in clinical outcomes and homograft function may be  
59 attributed, in part, to the faster body growth observed in male children, especially  
60 given the strong association between rates of homograft stenosis and body growth.

61

62 2. What are the clinical implications?

63 • For rapidly growing young children, opting for a suitably oversized homograft might  
64 serve as a more effective solution in reducing the rate of homograft stenotic failure.

65 • By exploring the relationship between homograft stenosis rate and individual body  
66 growth rate for each child, a personalized approach can be adopted during the  
67 homograft selection process, optimizing the sizing strategy for a better clinical  
68 outcome.

69

## 70 INTRODUCTION

71 Dextro-transposition of the great arteries(d-TGA) with ventricular septal defect  
72 (VSD) and pulmonary stenosis (PS) or pulmonary atresia (PA) is a rare congenital heart  
73 defect (CHD) that requires early palliative or corrective operations to enable patients'  
74 survival<sup>1</sup>. Despite various corrective options available, dysfunction of the right ventricular  
75 outflow tract (RVOT) conduit is almost inevitable during a patient's lifetime<sup>2</sup>. If feasible,  
76 implantation of a valve substitute with a homograft is the preferred choice to address this  
77 issue<sup>3</sup>. As most patients received their first homograft as a RVOT conduit during childhood, a  
78 period of rapid body growth and development, the homograft function evolution differs from  
79 that observed in adults<sup>4</sup>. Additionally, considering the distinct growth patterns between boys  
80 and girls<sup>5</sup>, there may be male-female differences in clinical outcomes and homograft function  
81 in d-TGA, VSD, PS/PA patients who received homograft as a RVOT conduit during  
82 childhood.

83 Despite the importance of studying this patient group, limited research has been done  
84 on these patients, particularly in terms of sex-specific outcomes. Thus, this study aimed to  
85 explore male-female differences in clinical outcomes and homograft function after  
86 homograft RVOT reconstruction in patients diagnosed with d-TGA, VSD, PS/PA.

## 87 PATIENTS AND METHODS

88 This is a retrospective single-center study. The medical ethics committee (METC) of  
89 the Erasmus University Medical Center reviewed and approved this study (MEC-2012-477).  
90 Informed consent was obtained from all participants alive. No consent from deceased patients  
91 was necessary according to the medical ethics regulations of our medical center.

### 92 1. Study population

93 All d-TGA patients who underwent RVOT reconstruction with a homograft at  
94 Erasmus University Medical Center from April 1986 to December 2021 were identified.

95 Patients not surgically corrected, without VSD and PS/PA, or alive but not giving their  
96 consents were excluded. Patients who underwent univentricular repair were also excluded.

## 97 **2. Data collection**

98 Baseline characteristics, perioperative information, clinical outcomes and  
99 echocardiographic parameters during follow-up were extracted by reviewing medical records.  
100 Events were defined according to the Akins 2008 guidelines<sup>6</sup>. Early events were defined as  
101 all events occurring within the first 30 days after operation. Any events occurring after 30  
102 days postoperative were defined as late events. Structural valve deterioration (SVD) was  
103 defined as stenosis or regurgitation relevant to pulmonary valve without diagnosis of  
104 endocarditis. The severities of stenosis and regurgitation were classified in compliance with  
105 the ESC/EACTS 2021 guidelines<sup>7</sup>. Stenosis was graded as mild (<36mmHg), moderate (36-  
106 64mmHg), and severe (>64mmHg). Regurgitation was graded as zero/trace, mild, moderate,  
107 and severe.

## 108 **3. Statistical methods**

109 Continuous data are presented as mean  $\pm$  standard deviation (normal distribution) or  
110 median with interquartile range (IQR) (non-normal distribution). Categorical data are  
111 presented as absolute count with percentages. Comparisons among continuous variables were  
112 made with the independent samples t-test or Kruskal-Wallis test, as appropriate. Comparisons  
113 of categorical data were made with the Chi-square test or Fisher's exact test, as appropriate<sup>8</sup>.  
114 The Shapiro-Wilk test and visual inspections were used to test the normality. The adverse  
115 event rate (AER) for clinical outcomes was calculated as total number of observed events  
116 over time (including repeated events) divided by total patient-years of follow-up. Survival  
117 data are presented as Kaplan-Meier estimates with a standard error or in the form of Kaplan-  
118 Meier curves. The log-rank test was used to compare survival outcomes in male and female  
119 patients. Fine-Gray sub-distribution hazard models were used for competing risk analysis,

120 with death being the competing event, and the sex-specific cumulative incidence of  
121 homograft reintervention and endocarditis was plotted based on the results<sup>9</sup>.

122 Two echocardiographic parameters were analyzed to assess homograft function, with  
123 only sex, time, and their interaction term as covariates to prevent overfitting. The RVOT peak  
124 gradient was evaluated using linear mixed-effects models with random intercepts for  
125 homografts. The degree of regurgitation was dichotomized as  $<$  moderate or  $\geq$  moderate and  
126 analyzed using logistic mixed-effects models with random intercepts for homografts. In  
127 patients younger than 16 years old, the longitudinal evolution of RVOT peak gradient was  
128 correlated to the longitudinal evolution of body surface area (BSA) by multivariate (multiple  
129 outcomes) mixed modeling<sup>10</sup>. The correlation between RVOT peak gradient and BSA was  
130 taken into account via the random effects of the model, in particular a multivariate normal  
131 distribution was assumed for the variance-covariance matrix of the random effects.  
132 Additionally, random slopes of BSA and RVOT peak gradient were predicted in their  
133 respective linear mixed-effects models, and associations between them were explored in  
134 linear regression model. Sensitivity analysis was conducted by temporarily excluding all  
135 measurements of one homograft at a time (leave-one-out sensitivity analysis). The estimates  
136 and their 95% CIs were visualized respectively for each model parameter. Linear mixed-  
137 effects models with the same structure were then constructed, and the results were compared  
138 with the full model without any exclusion. A P-value less than 0.05 was considered  
139 statistically significant, and no correction for multiple testing was applied. Statistical analyses  
140 were performed with R statistical program (R Foundation for Statistical Computing, Version  
141 4.2.2. <https://www.R-project.org/>).

## 142 RESULTS

### 143 1. Baseline characteristics and perioperative information

144 A total of 24 patients (16 males, 8 females), in whom 38 homografts (29 in males, 9 in  
145 females) were used for RVOT reconstructions, were included. Patient baseline characteristics  
146 are presented in **Table 1**. The perioperative information for each homograft implantation  
147 procedures is provided in [Supplementary material Table S1](#). Two patients died during  
148 hospitalizations (early death) for homograft replacement. Both of them were males: one died  
149 of refractory bleeding and hemorrhagic shock 3 days after operation; one died of septic shock  
150 53 days after the operation. No other early endocarditis or reintervention for homograft was  
151 observed.

### 152 2. Clinical outcomes

153 The median length of follow-up was 28.71 years (IQR: 7.30-31.57; patient-years:  
154 345.72) in male patients and 26.24 years (IQR: 12.22-31.95; patient-years: 173.35) in female  
155 patients. The completeness of follow-up was 95.98 %, calculated by the method proposed by  
156 Wu et al.<sup>11</sup>. **Figure 1** displays the time slots of key d-TGA-related events in each patient's  
157 journey from birth to death or the end of follow-up, separated by sex. These events include d-  
158 TGA corrective operation, first RVOT reconstruction with homograft, subsequent RVOT  
159 relevant procedures, homograft endocarditis, and mortality or end of follow-up.

#### 160 2.1 Late mortality

161 In total, five late deaths (2 males/ 3 females) occurred during follow-up. Reasons for  
162 three deaths in females were as follows: death while awaiting surgery for severe homograft  
163 stenosis, erysipelas-induced septic shock, and severe arrhythmia, respectively. Two male  
164 patients were found dead at home without clear explanations. The AERs of late death are  
165 presented in **Table 2**. The Kaplan-Meier estimates of overall survival are shown in **Figure 2**.



166 The 5-,10-,15-, and 20-year survival probabilities of male and female patients are presented  
167 in **Table 3**.

### 168 *2.2 Homograft reintervention*

169 During follow-up, 10 patients (8 males/2 females) received 22 reinterventions (7  
170 percutaneous, 15 surgical). Of all reinterventions, 17 were pulmonary valve replacement (3  
171 percutaneous, 14 surgical). The AERs of late reinterventions and replacement male and  
172 female patients are presented in **Table 2**. Most reinterventions were for stenotic SVD, and  
173 two homografts were replaced due to endocarditis. Most surgical replacement procedures  
174 were performed in male patients (13/14, 92.9%). Details of all reintervention cases are  
175 presented in [Supplementary material Table S2](#).

176 The cumulative incidence of RVOT reintervention with death as a competing event  
177 was visualized and is presented in **Figure 3**. Male patients had a significant higher  
178 cumulative incidence of RVOT reintervention compared to female patients (Gray's test:  
179  $P=0.0296$ ). The Kaplan-Meier estimates of freedom from RVOT replacement are shown in  
180 [Supplementary material Figure S1](#). The 5-,10-,15-, and 20-year probabilities of freedom from  
181 RVOT reintervention and replacement in male and female patients are presented in **Table 3**.  
182 Additionally, the Kaplan-Meier estimates of freedom from RVOT percutaneous/surgical  
183 reintervention and percutaneous/surgical replacement are shown in [Supplementary material](#)  
184 [Figure S2- S5](#).

### 185 *2.3 Endocarditis*

186 There were 4 homografts with endocarditis (all males), of which two required surgical  
187 homograft replacement. The AERs of endocarditis are presented in **Table 2**. The cumulative  
188 incidence of homograft endocarditis with death as the competing event was visualized and is  
189 presented in **Figure 4**. The 5-,10-,15-, and 20-year probabilities of freedom from endocarditis  
190 are presented in **Table 3**.

191 **3. Homograft function**

192 The study encompassed 257 echocardiographs conducted on 33 homografts implanted  
193 in 20 patients(14 males, 6 females). The total echocardiographic follow-up time was 359.41  
194 patient-years, with male patients contributing 264.14 patient-years and female patients  
195 contributing 95.27 patient-years. The completeness of echocardiographic follow-up was 83.2  
196 %, calculated by the method proposed by Wu *et al.*<sup>11</sup>. Three patients moved abroad after the  
197 operations and no further echocardiographic information is available.

198 *3.1 Echocardiographic measurements*

199 The evolution of RVOT peak gradient for each included patient was visualized and is  
200 presented respectively for male and female patients in [Supplementary material Figure S6-S7](#).  
201 Different homografts in the same patient were plotted in the same panel using different lines.

202 Results of linear mixed-effects models for RVOT peak gradient are shown in  
203 [Supplementary material Table S3](#). Male and female patients exhibited different rates of  
204 progression to stenosis, with males progressing at a faster rate ( $p=0.0272$ ). The results of  
205 sensitivity analysis are presented in [Supplementary material Figure S8](#), revealing significant  
206 disparities between the results of the five leave-one-homograft-out analyses and those of the  
207 full model. Results of logistic mixed-effects models for moderate or higher homograft  
208 regurgitation are displayed in [Supplementary material Table S4](#), and its sensitivity analysis  
209 results are shown in [Supplementary material Figure S9](#). The effect plots of RVOT peak  
210 gradient and probability of moderate or higher homograft regurgitation are presented in  
211 **Figure 5**.

212 *3.2 Associations between RVOT peak gradient and BSA in patients younger 16 years*

213 One hundred eighty-seven BSA measurements were collected from 22 patients  
214 younger than 16 years when receiving homografts for RVOT reconstruction. Results of linear  
215 mixed-effects models for BSA evolution are presented in [Supplementary material Table S5](#).

216 The results of the two mixed-effects models for longitudinal evolutions of RVOT peak  
217 gradient and children's BSA and their correlation matrix of random effects are exhibited in  
218 [Supplementary material Table S6](#). The effect plot of BSA increase over time is shown in  
219 [Supplementary material Figure S10](#). A faster increase of BSA over age was observed in boys  
220 compared to girls. The random slope of RVOT peak gradient over patient's time-varying age  
221 was positively correlated to the slope of BSA over patient's time-varying age ( $R = 0.5621$ ).  
222 Furthermore, a linear regression between the increase of RVOT peak gradient and BSA over  
223 time revealed BSA growth rate was significantly association with RVOT peak gradient  
224 acceleration rate (7.27 [95% CI: 2.08-12.45],  $P = 0.0133$ ). This association suggests the role  
225 of somatic growth in homograft stenotic failure. The effect estimate of BSA over time is  
226 presented for a 0.1 unite increase for its small scale.

## 227 **DISCUSSION**

228 This study focused on male-female differences in clinical outcomes of d-TGA, VSD,  
229 PS/PA patients who received a homograft implantation for RVOT reconstruction, and the  
230 long-term course of homograft (dys)function. It shows that male patients have a higher rate of  
231 RVOT reintervention, especially reoperations, compared to female patients. Furthermore, a  
232 more rapid progression of homograft stenosis was observed in male patients, highlighting the  
233 significance of considering sex-specific factors when planning treatment and monitoring  
234 patient outcomes. On top of that, a strong association between the increase rates of BSA and  
235 RVOT peak gradient was found, underlining the necessity of accounting for the accelerated  
236 body growth experienced by young children. In light of this strong association, the use of  
237 oversized homografts during RVOT reconstruction might offer benefits for children with d-  
238 TGA, VSD, PS/PA, especially in younger children and boys, as they grow faster in body  
239 size.

240 Multiple factors may contribute to the observed male-female differences in this study,  
241 encompassing both biological (*sex*) factors such as body growth rate and hormonal  
242 influences, and socio-cultural (*gender*) aspects like societal norms and roles<sup>12</sup>. In order to  
243 comprehensively understand and utilize these differences in a clinically meaningful manner,  
244 it is essential to examine both sex and gender aspects within the context of clinical outcomes  
245 and homograft function.

### 246 **1. Homograft reintervention**

247 Many studies concentrating on outcomes of patients undergoing homograft  
248 replacement have found a higher rate of homograft reinterventions in males<sup>13-15</sup>, which is  
249 consistent with findings in this study. Several potential reasons may explain the phenomenon,  
250 e.g., anatomy and physiology, hormonal level, body size and growth rate, etc<sup>16,17</sup>.

251 Young children are more prone to early homograft degeneration compared to adults,  
252 due to prosthesis-patient mismatch developing over time, as a result of somatic growth<sup>4,18</sup>. In  
253 this study, most of the included patients received their first homograft for RVOT  
254 reconstructions before the age of 10, during which their body size rapidly increases over time.  
255 Consistent with previous research indicating an accelerated growth rate in young boys  
256 compared to girls<sup>5</sup>, our study cohort mirrored the same trend. The divergent growth rates may  
257 contribute to an increased occurrence of prosthesis-patient mismatch cases in male patients,  
258 and consequently, more reinterventions.

259 Furthermore, the observed male-female differences may be influenced by sex-specific  
260 hormones. During puberty, testosterone levels increase substantially in male adolescents,  
261 while estrogen levels rise dramatically in female adolescents<sup>19,20</sup>. Interestingly, these two sex  
262 steroid hormones have been found to be correlated with serum calcium levels<sup>21</sup>. Specifically,  
263 estrogen has been linked to reducing serum calcium, whereas testosterone has been

264 associated with its elevation<sup>21</sup>. The potential impact of their regulatory roles on serum  
265 calcium could potentially impact the risk of homograft calcifications and degeneration.

266 On top of the aforementioned biological factors, gender may also contribute to the  
267 higher rate of reinterventions in male patients. Children's gender might influence their  
268 parents' care-seeking behavior for them, especially in low- and middle- income countries<sup>22</sup>.  
269 This may not directly apply to the current study, given that the Netherlands is a high-income  
270 country. Further information regarding patients and their families social-economic status  
271 would help validate whether children's gender interacts with family income levels, potentially  
272 affecting parents' healthcare-seeking decisions for their children.

273 Symptoms are an important part of criteria for heart valve reinterventions<sup>7</sup>. As  
274 indicated in some clinical research, male and female patients may differ in clinical symptoms,  
275 with female patients more likely to experience atypical symptoms<sup>23-25</sup>. The atypical  
276 symptoms might deter doctors from performing potentially necessary reinterventions in  
277 female patients, thereby causing a lower rate of reinterventions in female patients compared  
278 to male patients.

## 279 **2. Homograft stenosis**

280 In this study, out of the 22 reintervention cases, 18 were attributed to homograft  
281 stenotic failure. The RVOT peak gradient serves as a common echocardiographic parameter  
282 for assessing valve stenosis. Its evolution reflects the progression of stenosis. As depicted in  
283 **Figure 5**, male patients demonstrated a faster increase rate of RVOT peak gradient, implying  
284 a more rapid development of stenosis compared to their female counterparts. As previously  
285 discussed, prosthesis-patient mismatch could be a contributing factor to reinterventions for  
286 stenosis in young children. The observed faster stenotic development in male patients might  
287 be attributed to a higher incidence of prosthesis-patient mismatch in this group, as boys tend  
288 to grow faster than girls<sup>5</sup>. Our investigation of the relationship between the evolutions of

289 BSA and RVOT peak gradient revealed a strong correlation, suggesting that faster BSA  
290 increase is correlated with a more rapid progression of RVOT peak gradient. Considering this  
291 strong correlation, accounting for children's future body growth may become essential for  
292 clinicians, necessitating the consideration of different homograft sizing for boys and girls to  
293 provide more patient-specific clinical management.

294 Echocardiograph is commonly used to measure homograft function. Usually the time  
295 interval between two consecutive measurements depends on the decision made by both  
296 doctors and patients. As mentioned previously, female patients are inclined to exhibit more  
297 atypical symptoms or even remain asymptomatics<sup>23-25</sup>. On one hand, doctors may feel  
298 reluctant to prescribe appropriate treatment/examinations when facing patients with atypical  
299 symptoms. On the other hand, patients with non- or atypical-symptoms might be more likely  
300 to decline necessary homograft function evaluations, potentially leading to distortions of the  
301 observed evolutions of RVOT peak gradient. Consequently, (symptomatic) male patients  
302 received more echocardiographic examinations, capturing higher RVOT peak gradient  
303 values, which might contribute to the observed accelerated progression of homograft stenosis  
304 in male patients compared to their female counterparts.

### 305 **3. Limitations**

306 First and foremost, a notable limitation of this study is the very small sample size,  
307 which may have decreased the statistical power to detect the significant differences of the  
308 observation of many important clinical events during the follow-up period. Additionally, the  
309 application of complex modeling methods, such as (multivariate) mixed-effects models, in  
310 such a small dataset may lead to overfitted estimates, further warranting cautious  
311 extrapolation of results to other patients. Additionally, only linear relations between length of  
312 follow-up time and repeated measurements (RVOT peak gradient,  $\geq$  moderate or higher  
313 pulmonary regurgitation) were taken into account to avoid potential overfitting issue.

314 However, nonlinear relations between time and longitudinal outcomes are common in clinical  
315 research<sup>26</sup>. It is necessary to account for nonlinearity when larger sample size is available.  
316 Furthermore, reinterventions are recurrent events and should be analyzed using recurrent  
317 event survival analysis. However, it is not feasible due to the small sample size, and only the  
318 first reintervention was considered for survival analysis in this study. It might affect the  
319 estimates of reintervention hazard. Lastly, this is a retrospective study, and its inherent  
320 limitations also apply for this study<sup>27</sup>.

### 321 **Conclusion**

322 In our single-center experience, there are substantial male-female differences in terms  
323 of clinical outcomes and homograft function over time in d-TGA, VSD, PS or PA patients  
324 who receive homografts for RVOT reconstruction during or after corrective operations.  
325 Given the association between the rate of body growth, notably faster in boys, and the  
326 progression of homograft stenosis, somatic growth might contribute to the higher  
327 reintervention rate in males. To address this, we recommend employing oversized homografts  
328 that account for future increases of body size in young patients when their body size can be  
329 measured accurately and the (properly) over-sized homograft is available. Furthermore, the  
330 oversizing criteria should be established sex-specifically in light of different body growth  
331 rates in young female and male patients.

### 332 **ACKNOWLEDGMENTS**

333 Not applicable

### 334 **FUNDING STATEMENT**

335 None

### 336 **CONFLICT OF INTEREST STATEMENT**

337 Nothing to declare.

### 338 **AUTHOR CONTRIBUTION STATEMENT**

339 **XW**: Conceptualization; Data collection and validation; Statistical analyses; Writing and  
340 editing. **IMB**: Conceptualization; Data collection and validation; Statistical analyses; Writing  
341 and editing. **KMV**: Methodological supervision; Results validation; Manuscript review and  
342 editing. **PCW**: Data validation; Manuscript review and editing. **CCEMV**: Data collection;  
343 Manuscript review and editing. **AJCB**: Results validation; Manuscript review and  
344 editing. **WAH**: Results validation; Manuscript review and editing. **JJMT**: Conceptualization;  
345 Supervision; Data and results validation; Manuscript review and editing.



346 **Table 1:** Baseline characteristics of d-TGA patients with VSD, pulmonary stenosis or atresia

Characteristic	Total n = 24	Male patients n = 16	Female patients n = 8	P- value	
<b>Age (correction), years</b>	2.21 (1.09, 5.44)	2.31 (1.06, 4.66)	1.80 (1.09, 7.07)	0.928	
<b>Age, years §</b>	1 <sup>st</sup> homograft	2.34 (1.26, 9.17)	2.56 (1.26, 11.31)	2.06 (1.28, 8.13)	0.742
	2 <sup>nd</sup> homograft	12.75 (8.14, 17.88)	15.11 (7.72, 19.11)	—*‡	—
<b>Corrective procedure with homograft, n (%)</b>	18 (75.0)	13 (81.3)	5 (62.5)	0.617	
<b>Times of homograft implantations, n (%) §</b>				0.311	
- First	24 (100.0)	16 (100.0)	8 (100.0)		
- Second	9 (37.5)	8 (50.0)	1 (12.5)		
- Third	3 (12.5)	3 (18.8)	0 (0.0)		
- Fourth	2 (8.3)	2 (12.5)	0 (0.0)		
<b>Homograft type, pulmonary, n (%) §</b>				0.453	
- First homograft	11 (45.8)	6 (37.5)	4 (50.0)		
- Second homograft	7 (77.8)	6 (75.0)	1 (100.0)		
- Third homograft	1 (33.3)	1 (33.3)	0 (0.0)		
- Fourth homograft	2 (100.0)	2 (100.0)	0 (0.0)		
<b>Homograft diameter, mm*</b>	18.67 ± 3.52	18.69 ± 2.91	18.63 ± 4.75	0.974	
<b>BSA, m<sup>2</sup> †</b>	0.51 (0.41, 1.05)	0.52 (0.42, 1.26)	0.49 (0.39, 0.86)	0.691	
<b>BID, mm/m<sup>2</sup> †</b>	34.12 (20.24, 41.18)	34.12 (16.63, 41.18)	35.25 (28.22, 40.40)	0.927	
<b>Associated anomalies, n (%)</b>				0.385	
- PA	2 (8.3)	2 (12.5)	0 (0.0)		
- ASD	8 (33.3)	3 (18.8)	5 (62.5)		
- DORV	6 (25.0)	2 (12.5)	4 (50.0)		
- PDA	1 (4.2)	0 (0.0)	1 (12.5)		
- Aorta anomalies‡	3 (12.5)	1 (6.3)	2 (25.0)		
- DCRV	1 (4.2)	1 (6.3)	0 (0.0)		
- Pulmonary artery anomalies	2 (8.3)	2 (12.5)	0 (0.0)		
- Coronary artery anomalies	1 (4.2)	1 (6.3)	0 (0.0)		
- Pulmonary vein anomalies	1 (4.2)	1 (6.3)	0 (0.0)		
- Hypoplastic RV	1 (4.2)	0 (0.0)	1 (12.5)		
<b>Corrective Operation, n (%)</b>				1.000	
- Rastelli procedure	20 (83.3)	13 (81.3)	7 (87.5)		
- REV procedure	2 (8.3)	2 (12.5)	0 (0.0)		
- ASO procedure	2 (8.3)	1 (6.2)	1 (12.5)		
<b>Palliative procedures, n (%)</b>				0.587	
- No palliative procedure	7 (29.2)	6 (37.5)	1 (12.5)		
- BT or Modified BT shunt	10 (41.7)	6 (37.5)	4 (50.0)		
- Waterston shunt	3 (12.5)	1 (6.3)	2 (25.0)		
- Potts shunt	1 (4.2)	1 (6.3)	0 (0.0)		
- Rashkind procedure	6 (25.0)	3 (18.8)	3 (37.5)		
- Central aorto-pulmonary shunt	2 (8.3)	1 (6.3)	1 (12.5)		

347 Data are presented as median (IQR) or mean ± SD. BSA: body surface area; BID: BSA indexed diameter,  
 348 calculated using homograft diameter divided by BSA; PA: pulmonary atresia; ASD: atrial septal defect; DORV:  
 349 double outlet right ventricle; PDA: patent ductus arteriosus; DCRV: double-chambered right ventricle; RV:

350 Right ventricle; REV procedure: réparation à l'étage ventriculaire; ASO: arterial switch operation; BT Shunt:  
351 Blalock-Taussig shunt; IQR: interquartile range; SD: standard deviation.  
352 §: the 1st /2nd /3rd homograft here refer to the homograft that patients received during their first/second/third  
353 RVOT reconstruction with homograft procedures. The sum of all these numbers in each column is the total  
354 number of RVOT homograft, which is larger than the number of patients since one patient can receive multiple  
355 homografts sequentially.  
356 \*: Values here are only about the diameter of the first homograft used for RVOT reconstruction.  
357 †: BSA and BID are the values measured prior to the operation of the first RVOT reconstruction with a  
358 homograft.  
359 ‡: Aorta anomalies: Aortic Arch Coarctation/hypoplasia/interrupted aortic arch, Overriding Aorta.  
360 \*: Only one second homograft in females. Quantiles cannot be computed.  
361

362 **Table 2:** Number of events and adverse event rates in male and female patients  
363

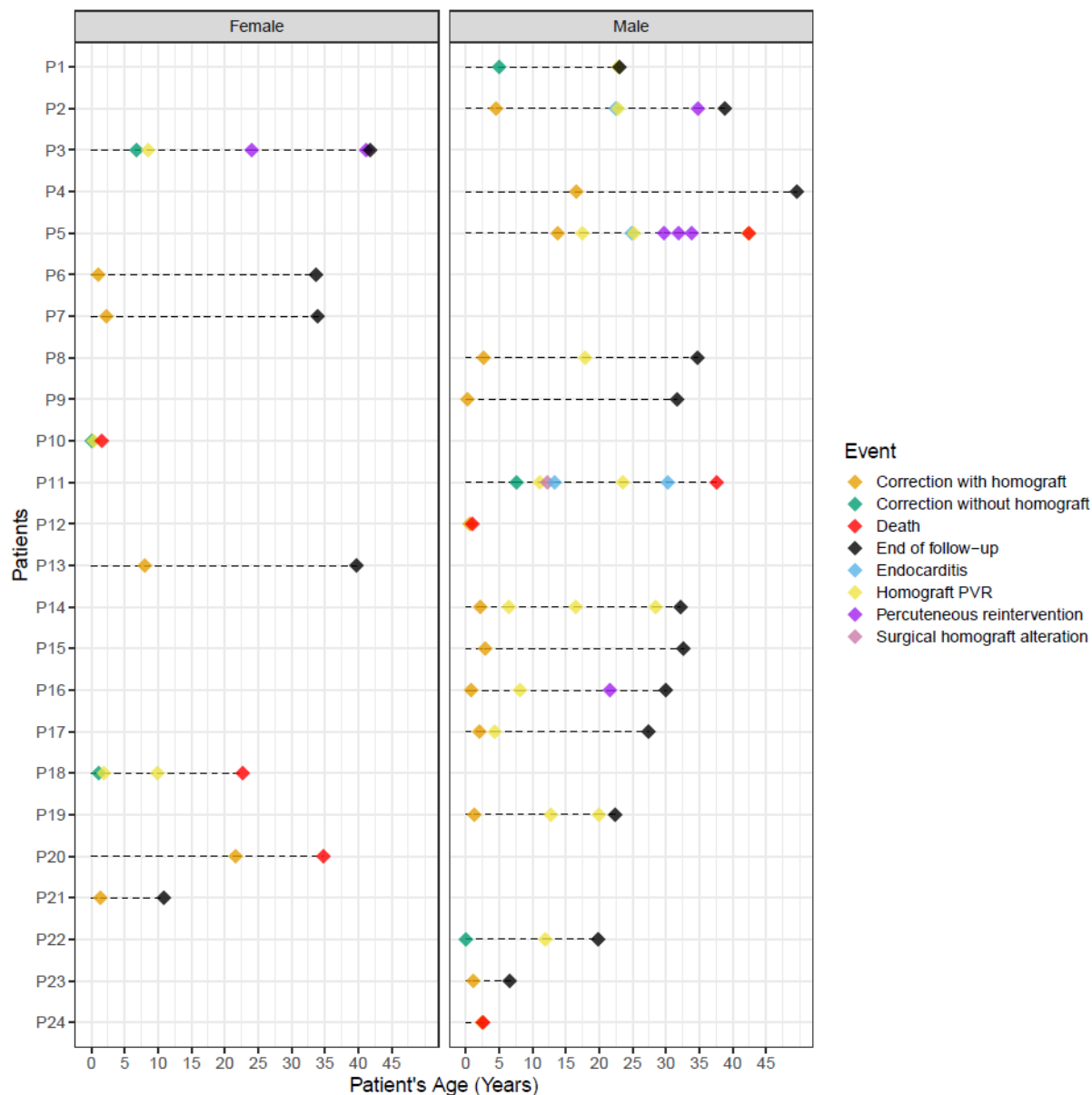
		<b>Males (n = 16)</b>		<b>Females (n = 8)</b>		<b>P-values</b>
		<b>N</b>	<b>AER (95%CI)</b>	<b>N</b>	<b>AER (95%CI)</b>	
<b>FUP, years</b>		28.71 (7.30, 31.57)		26.24 (12.22, 31.95)		
<b>Patient-years</b>		345.72		173.35		
<b>Late mortality</b>	<i>All-cause</i>	2	0.58 (0.07-2.09)	3	1.73 (0.36-5.06)	0.207
	<i>-Cardiac</i>	2	0.58 (0.07-2.09)	2	1.15 (0.14-4.17)	0.481
	<i>-Valve-related</i>	2	0.58 (0.07-2.09)	1	0.58 (0.01-3.21)	0.998
<b>Late reinterventions</b>		19	5.50 (3.31-8.58)	3	1.73 (0.36-5.06)	0.049
- <i>Percutaneous</i>		5	1.45 (0.47-3.38)	2	1.15 (0.14-4.17)	0.787
- <i>Surgical</i>		14	4.05 (2.21-6.79)	1	0.58 (0.01-3.21)	0.028
<b>Replacement</b>		16	4.63 (2.65-7.52)	1	0.58 (0.01-3.21)	0.016
- <i>Percutaneous</i>		3	0.87 (0.18-2.54)	0	0 (0-2.13)	0.220
- <i>Surgical</i>		13	3.76 (2.00-6.43)	1	0.58 (0.01-3.21)	0.037
<b>Endocarditis</b>		4	1.16 (0.32-2.97)	0	0 (0-2.13)	0.157
<b>PPMI/ICD</b>		2	0.58 (0.07-2.09)	1	0.58 (0.01-3.21)	0.997

364 N: number of events; AER: adverse event rate, patient-years divided by number of events; CI: confidence  
365 interval; FUP: length of follow-up; PPMI: permanent pacemaker implantation; ICD: Implantable cardioverter  
366 defibrillator.

367 **Table 3:** Probabilities of cumulative survival, and freedom from homograft reintervention,  
368 replacement and endocarditis

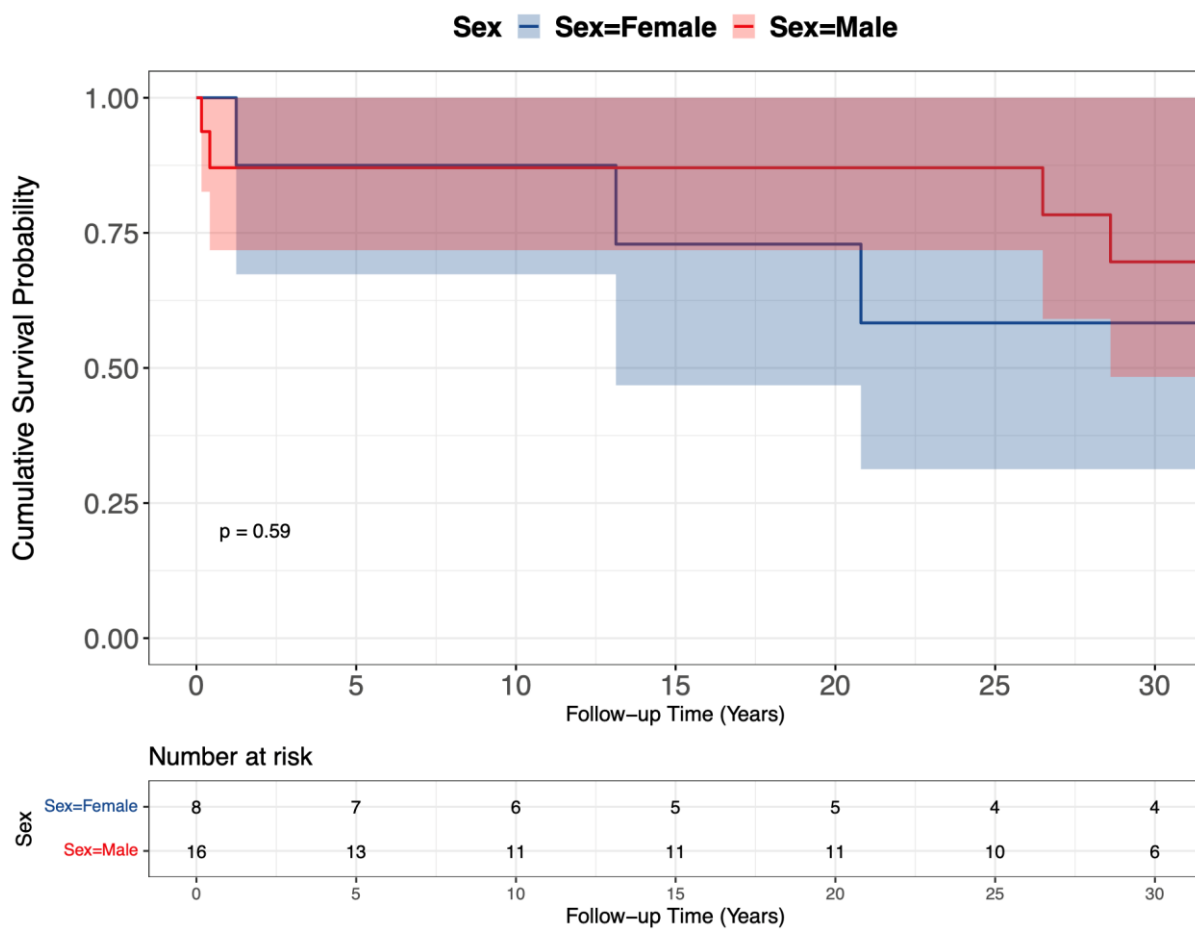
<b>Event</b>	<b>Sex</b>	<b>5 years</b>	<b>10 years</b>	<b>15 years</b>	<b>20 years</b>
<b>Patients Survival*</b> , %	Female	87.5 (67.3-100)	87.5 (67.3-100)	72.9 (46.8-100)	72.9 (46.8-100)
	Male	87.1 (71.8-100)	87.1 (71.8-100)	87.1 (71.8-100)	87.1 (71.8-100)
<b>Freedom from reintervention†</b> , %	Female	100 (100-100)	87.5 (67.3-100)	87.5 (67.3-100)	66.5 (35.2-100)
	Male	83.4 (69.8-99.7)	64.9 (47.9-88.0)	38.1 (21.7-66.9)	23.8 (9.9-57.1)
- <i>Percutaneous</i>	Female	100 (100-100)	100 (100-100)	100 (100-100)	75.0 (42.6-100)
	Male	100 (100-100)	94.7 (85.2-100)	74.6 (52.6-100)	74.6 (52.6-100)
- <i>Surgical</i>	Female	100 (100-100)	87.5 (67.3-100)	87.5 (67.3-100)	87.5 (67.3-100)
	Male	83.4 (69.8-100)	69.5 (52.9-91.3)	53.8 (36.1-80.2)	27.7(11.5-66.3)
<b>Freedom from replacement†</b> , %	Female	100 (100-100)	87.5 (67.3-100)	87.5 (67.3-100)	87.5 (67.3-100)
	Male	87.5 (75.1-100)	69.0 (52.3-91.1)	47.5 (29.9-75.5)	29.7 (13.1-67.0)
- <i>Percutaneous</i>	Female	100 (100-100)	100 (100-100)	100 (100-100)	100 (100-100)
	Male	100 (100-100)	94.7 (85.2-100)	85.3 (67.6-100)	85.3 (67.6-100)
- <i>Surgical</i>	Female	100 (100-100)	87.5 (67.3-100)	87.5 (67.3-100)	87.5 (67.3-100)
	Male	87.5 (75.1-100)	73.6 (57.5-94.3)	52.3 (34.4-79.6)	26.9 (11.1-65.1)
<b>Freedom from endocarditis†</b> , %	Female	100 (100-100)	100 (100-100)	100 (100-100)	100 (100-100)
	Male	96.0 (88.6-100)	85.3(71.0-100)	85.3(71.0-100)	71.1 (47.5-100)

369 \*: Survival probability was calculated on patient-level. †: Probabilities of freedom from reintervention,  
370 replacement, and endocarditis were calculated on homograft-level. All probabilities are presented in the format  
371 of absolute percent (95% confidence interval).  
372  
373

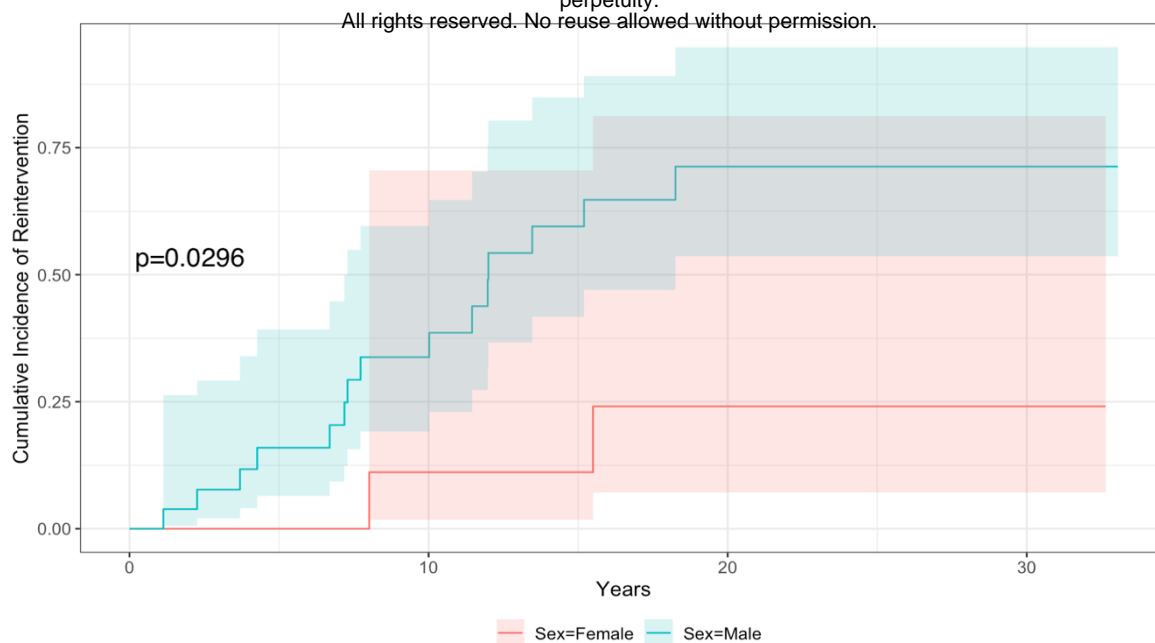


374 **Figure 1:** Event timelines of patients with d-TGA/VSD and PS or PA. Each point on the x-  
 375 axis represents one patient. Each horizontal line stands for the time span of on patient from  
 376 his or her birth to death or the end of the follow-up. Diamonds of different colors represent  
 377 different events. All events were arranged chronologically, with the corresponding values on  
 378 y-axis indicating the age of event occurrence. Patient “P5” died 3 days after the last  
 379 homograft PVR operation. “PVR”: pulmonary valve replacement; “Homograft PVR” is a  
 380 synonym for RVOT reconstruction with homograft.

381  
 382  
 383  
 384  
 385  
 386  
 387  
 388  
 389

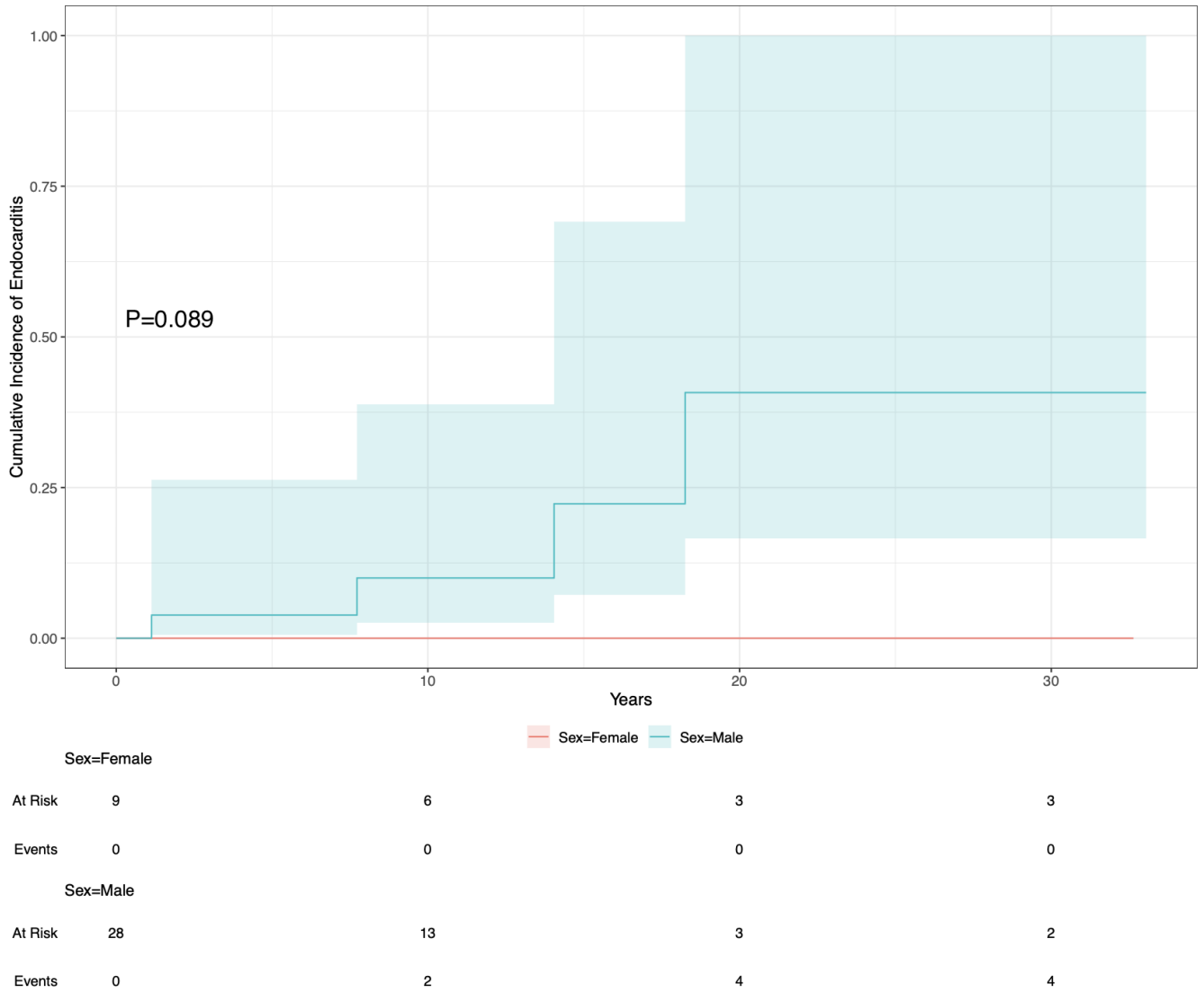


390  
 391 **Figure 2:** Kaplan-Meier survival estimates in male and female patients. The number-at-risk is  
 392 the number of patients at risk at different time points(not the number of homograft). Log-rank  
 393 test was used here.



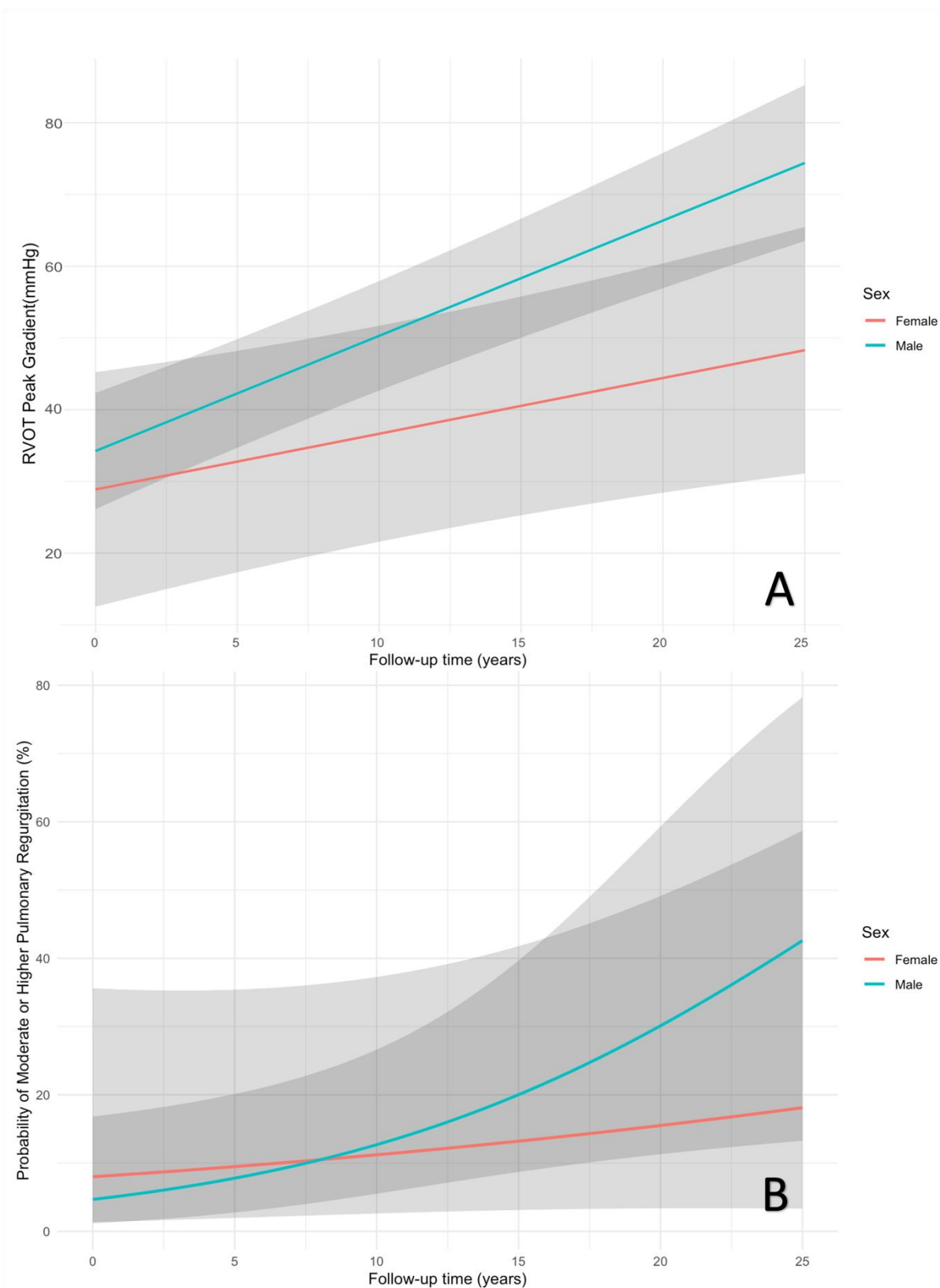
Sex=Female		Sex=Male	
At Risk	9	6	3
Events	0	1	2
Sex=Male		Sex=Female	
At Risk	28	13	3
Events	0	8	15

394 **Figure 3:** Cumulative incidence of receiving RVOT reinterventions in homografts implanted  
 395 in male and female patients.



396 **Figure 4:** Cumulative incidence of homograft endocarditis in male and female patients.  
397





398 **Figure 5:** Effect plots of A: RVOT peak gradient change over time in male and female  
399 patients; B: probabilities of having moderate or higher pulmonary regurgitation over time in  
400 male and female patients.

401

## 402 REFERENCES

- 403 1. Carole AW. Transposition of the Great Arteries. *Circulation*. 2006;114(24):2699-  
404 2709. doi:doi:10.1161/CIRCULATIONAHA.105.592352
- 405 2. Hornung TS, Derrick GP, Deanfield JE, Redington AN. Transposition complexes in  
406 the adult: a changing perspective. *Cardiology Clinics*. 2002/08/01/ 2002;20(3):405-420.  
407 doi:[https://doi.org/10.1016/S0733-8651\(02\)00012-7](https://doi.org/10.1016/S0733-8651(02)00012-7)
- 408 3. Romeo JLR, Mokhles MM, van de Woestijne P, et al. Long-term clinical outcome  
409 and echocardiographic function of homografts in the right ventricular outflow tract†. *Eur J*  
410 *Cardiothorac Surg*. Mar 1 2019;55(3):518-526.
- 411 4. Henaine R, Roubertie F, Vergnat M, Ninet J. Valve replacement in children: a  
412 challenge for a whole life. *Arch Cardiovasc Dis*. Oct 2012;105(10):517-28.
- 413 5. Koziel S. Relationships among tempo of maturation, midparent height, and growth in  
414 height of adolescent boys and girls. *Am J Hum Biol*. Jan-Feb 2001;13(1):15-22.
- 415 6. Akins CW, Miller DC, Turina MI, et al. Guidelines for reporting mortality and  
416 morbidity after cardiac valve interventions. *Ann Thorac Surg*. Apr 2008;85(4):1490-5.
- 417 7. Vahanian A, Beyersdorf F, Praz F, et al. 2021 ESC/EACTS Guidelines for the  
418 management of valvular heart disease. *Eur Heart J*. Feb 12 2022;43(7):561-632.
- 419 8. Kim HY. Statistical notes for clinical researchers: Chi-squared test and Fisher's exact  
420 test. *Restor Dent Endod*. May 2017;42(2):152-155.
- 421 9. Austin PC, Fine JP. Practical recommendations for reporting Fine-Gray model  
422 analyses for competing risk data. *Stat Med*. Nov 30 2017;36(27):4391-4400.
- 423 10. Rizopoulos D. The R Package JMbayes for Fitting Joint Models for Longitudinal and  
424 Time-to-Event Data Using MCMC. *Journal of Statistical Software*. 2016;72(7):1 - 46.  
425 doi:10.18637/jss.v072.i07
- 426 11. Wu Y, Takkenberg JJ, Grunkemeier GL. Measuring follow-up completeness. *Ann*  
427 *Thorac Surg*. Apr 2008;85(4):1155-7.
- 428 12. Bewley S, McCartney M, Meads C, Rogers A. Sex, gender, and medical data. *Bmj*.  
429 2021;372:n735. doi:10.1136/bmj.n735
- 430 13. Oeser C, Uyanik-Uenal K, Kocher A, Laufer G, Andreas M. Long-term performance  
431 of pulmonary homografts after the Ross procedure: experience up to 25 years. *Eur J*  
432 *Cardiothorac Surg*. May 1 2019;55(5):876-884.
- 433 14. Caldarone CA, McCrindle BW, Van Arsdell GS, et al. Independent factors associated  
434 with longevity of prosthetic pulmonary valves and valved conduits. *J Thorac Cardiovasc*  
435 *Surg*. Dec 2000;120(6):1022-30; discussion 1031.
- 436 15. Zubairi R, Malik S, Jaquiss RDB, Imamura M, Gossett J, Morrow WR. Risk Factors  
437 for Prosthesis Failure in Pulmonary Valve Replacement. *The Annals of Thoracic Surgery*.  
438 2011/02/01/ 2011;91(2):561-565. doi:<https://doi.org/10.1016/j.athoracsur.2010.07.111>
- 439 16. Schoen FJ, Levy RJ. Calcification of tissue heart valve substitutes: progress toward  
440 understanding and prevention. *Ann Thorac Surg*. Mar 2005;79(3):1072-80.
- 441 17. Jiao L, Machuki JO, Wu Q, et al. Estrogen and calcium handling proteins: new  
442 discoveries and mechanisms in cardiovascular diseases. *Am J Physiol Heart Circ Physiol*.  
443 Apr 1 2020;318(4):H820-H829.
- 444 18. David TE. Aortic Valve Replacement in Children and Young Adults\*. *Journal of the*  
445 *American College of Cardiology*. 2016/06/21/ 2016;67(24):2871-2873.  
446 doi:<https://doi.org/10.1016/j.jacc.2016.04.023>
- 447 19. Courant Fdr, Aksglaede L, Antignac J-P, et al. Assessment of Circulating Sex Steroid  
448 Levels in Prepubertal and Pubertal Boys and Girls by a Novel Ultrasensitive Gas  
449 Chromatography-Tandem Mass Spectrometry Method. *The Journal of Clinical*  
450 *Endocrinology & Metabolism*. 2010;95(1):82-92. doi:10.1210/jc.2009-1140

- 451 20. Khan L. Puberty: Onset and Progression. *Pediatr Ann.* Apr 1 2019;48(4):e141-e145.  
452 21. Van Hemelrijck M, Michaelsson K, Nelson WG, et al. Association of serum calcium  
453 with serum sex steroid hormones in men in NHANES III. *Aging Male.* Dec 2013;16(4):151-  
454 8.  
455 22. Sharif AI, Amy M, Sufang G, Alyssa S, Sheeba H, Paul R. Gender-related differences  
456 in care-seeking behaviour for newborns: a systematic review of the evidence in South Asia.  
457 *BMJ Global Health.* 2019;4(3):e001309. doi:10.1136/bmjgh-2018-001309  
458 23. Meischke H, Yasui Y, Kuniyuki A, Bowen DJ, Andersen R, Urban N. How women  
459 label and respond to symptoms of acute myocardial infarction: responses to hypothetical  
460 symptom scenarios. *Heart Lung.* Jul-Aug 1999;28(4):261-9.  
461 24. Dempsey SJ, Dracup K, Moser DK. Women's decision to seek care for symptoms of  
462 acute myocardial infarction. *Heart Lung.* Nov-Dec 1995;24(6):444-56.  
463 25. Davis LL, Mishel M, Moser DK, Esposito N, Lynn MR, Schwartz TA. Thoughts and  
464 behaviors of women with symptoms of acute coronary syndrome. *Heart Lung.* Nov-Dec  
465 2013;42(6):428-35.  
466 26. Wang X, Andrinopoulou ER, Veen KM, Bogers A, Takkenberg JJM. Statistical  
467 primer: an introduction to the application of linear mixed-effects models in cardiothoracic  
468 surgery outcomes research-a case study using homograft pulmonary valve replacement data.  
469 *Eur J Cardiothorac Surg.* Sep 2 2022;62(4)  
470 27. Bellomo R, Warrillow SJ, Reade MC. Why we should be wary of single-center trials.  
471 *Crit Care Med.* Dec 2009;37(12):3114-9.  
472