

1  
2  
3  
4  
5  
6  
7  
8  
9  
10  
11  
12  
13  
14  
15  
16  
17  
18  
19  
20  
21  
22  
23  
24  
25  
26  
27  
28

Perceptions of access to harm reduction services during the COVID-19 pandemic  
among people who inject drugs in Chicago

Kathleen Kristensen<sup>1\*</sup>¶, Basmattee Boodram<sup>1¶</sup>, Wendy Avila<sup>1</sup>, Juliet Pineros<sup>1</sup>, Carl  
Latkin<sup>2</sup>, Mary-Ellen Mackesy-Amiti<sup>1</sup>

<sup>1</sup>Division of Community Health Sciences, University of Illinois Chicago School of Public  
Health, Chicago, Illinois, United States of America

<sup>2</sup>Department of Health, Behavior, and Society, Johns Hopkins Bloomberg School of  
Public Health, Baltimore, Maryland, United States of America

\* Corresponding author

E-mail: [kkrist3@uic.edu](mailto:kkrist3@uic.edu) (KK)

¶These authors contributed equally to this work.

29 **ABSTRACT**

30 *Background.* The COVID-19 pandemic amplified the risk environment for people who  
31 inject drugs (PWID), making continued access to harm reduction services imperative.  
32 Research has shown that some harm reduction service providers were able to continue  
33 to provide services throughout the pandemic. Most of these studies, however, focused  
34 on staff perspectives, not those of PWID. Our study examines changes in perceptions of  
35 access to harm reduction services among PWID participating in a longitudinal study  
36 conducted through the University of Illinois-Chicago's Community Outreach Intervention  
37 Project field sites during the COVID-19 pandemic.

38  
39 *Methods.* Responses to a COVID-19 module added to the parent study survey that  
40 assessed the impact of COVID-19 on PWID participating in an ongoing longitudinal  
41 study were analyzed to understand how study participants' self-reported access to harm  
42 reduction services changed throughout the pandemic. Mixed effects logistic regression  
43 was used to examine difficulty in syringe access as an outcome of COVID-19 phase.

44  
45 *Results.* Most participants reported that access to syringes and naloxone remained the  
46 same as prior to the pandemic. Participants had significantly higher odds of reporting  
47 difficulty in accessing syringes earlier in the pandemic.

48  
49 *Conclusions.* The lack of perceived changes in harm reduction access by PWID and the  
50 decrease in those reporting difficulty accessing syringes as the pandemic progressed  
51 suggests the efficacy of adaptations to harm reduction service provision (e.g., window

52 and mobile service) during the pandemic. Further research is needed to understand  
53 how the COVID-19 pandemic may have impacted PWIDs' engagement with harm  
54 reduction services.

55

## 56 INTRODUCTION

57 The COVID-19 pandemic has disproportionately affected vulnerable populations,  
58 including people who use drugs (PWUD) (1). Compared to people without a history of  
59 substance use, PWUD are at increased risk for contracting and experiencing severe  
60 outcomes from COVID-19 (e.g., hospitalizations and mortality), particularly if they have  
61 a history of underlying health conditions including cardiovascular disease, type 2  
62 diabetes, obesity, or cancer (1). Among PWUD, people who inject drugs (PWID) are at  
63 a heightened risk of exposure to COVID-19 for two primary reasons: complex medical  
64 comorbidities and social risk factors. Complex medical comorbidities include lung  
65 diseases such as asthma, immunodeficiencies from human immunodeficiency virus  
66 (HIV) or co-infections such as tuberculosis or viral hepatitis, and cardiovascular  
67 conditions such as hypertension. Each of these comorbidities are confirmed risk factors  
68 for developing severe COVID-19 (2,3). Along with complex medical comorbidities,  
69 vulnerability of PWID is further augmented by social factors such as homelessness,  
70 incarceration, poverty, and limited access to healthcare due to drug use stigma and  
71 discrimination (4–10). Collectively, these risk factors are compounded by economic  
72 hardships exacerbated by the COVID-19 pandemic, including food insecurity, housing  
73 insecurity, and substandard sanitation conditions (3,5,11,12). For these and other  
74 reasons, research specific to COVID-19 suggests that the pandemic escalated isolation,  
75 loss of social support, and mental health decline among PWID (5,13). Compliance with  
76 public health recommendations such as physical distancing was challenging for PWID,  
77 particularly those living in public spaces, shelters, and hostels (14). Additionally,  
78 accessibility to crucial services such as social work, counseling, HIV and hepatitis C

79 (HCV) testing, harm reduction services, and inpatient drug treatment programs was  
80 significantly reduced (5,13).

81 Harm reduction services, including syringe services programs (SSPs), safe  
82 injection sites (SIFs), and naloxone distribution provide significant individual and public  
83 health benefits, including preventing deaths from overdoses and preventing  
84 transmission of bloodborne infections such as HIV and HCV among PWUD and their  
85 networks. These services reduce emergency department visits and costly healthcare  
86 services and may provide or facilitate linkage to substance use treatment (e.g.,  
87 medication for opioid use disorder) (15). Moreover, these services may reduce stigma  
88 associated with drug use, affect social norms among networks, and improve access to  
89 essential resources (e.g., housing assistance, food banks, legal aid, mental health  
90 services, and employment services) (16–18). In some cases, COVID-19 mitigation  
91 strategies contributed to making SSPs and medications for opioid use disorder (MOUD)  
92 treatment more accessible by expanding mobile outreach, delivering equipment via  
93 mail, relaxing syringe exchange policies, and loosening regulations on telemedicine  
94 (19,20). Other COVID-19 mitigation strategies such as social distancing and program  
95 resource restrictions (e.g., staff, supply, financial) led to reduced access to harm  
96 reduction services, particularly SSPs, resulting in fewer opportunities for HIV testing,  
97 HIV counseling, and obtaining sterile injection supplies. Since SSPs also provide a vital  
98 location for social interaction and social support, the disruption of service modality (e.g.,  
99 decreasing hours of operation, number of staff, and face-to-face interactions) has led to  
100 increased feelings of isolation among PWID (19). These findings have been identified

101 across a range of locations, including 27 SSPs spread across the Northeast, Midwest,  
102 South, and Western regions of the United States (19).

103 While existing research offers valuable insights into harm reduction service  
104 access during the pandemic, these studies largely focus on the perspectives of service  
105 providers (19–21). Furthermore, the limited data reported directly by PWID are currently  
106 confined to single regions of the country, such as New York (5), and further analysis is  
107 necessary to determine if the conclusions are consistent in other regions as COVID-19  
108 policies varied greatly by location. The present study aims to examine the impact of the  
109 COVID-19 pandemic on access to harm reduction services by exploring PWIDs’  
110 perceptions of changes in access to these services over the course of the pandemic in  
111 metropolitan Chicago, Illinois.

112

## 113 **MATERIAL AND METHODS**

114 **Study setting.** We use data from an ongoing longitudinal study of PWID in  
115 metropolitan Chicago that included a COVID-19 specific module in the parent study  
116 survey. The study was conducted at Community Outreach Intervention Projects (COIP),  
117 a center within the School of Public Health at the University of Illinois at Chicago that  
118 provides harm reduction services, including SSP, naloxone, HIV and HCV counseling  
119 and testing, linkage to MOUD, and case management services to PWID and their  
120 partners in the Chicago metropolitan area (includes the city of Chicago and its  
121 surrounding suburbs that span 16 counties in northeast Illinois, southeast Wisconsin,  
122 and northwest Indiana.) The study was approved by the University of Illinois Chicago’s  
123 Institutional Review Board (Protocol #2017-0388).

124           **COVID-19 Ordinance.** In Illinois, where the study was conducted, a stay-at-  
125 home ordinance was issued on March 20<sup>th</sup>, 2020, requiring non-essential workers to  
126 stay at home and non-essential businesses to close. This directive prompted  
127 community-based programs such as COIP, which provides critical treatment and harm  
128 reduction services to PWID, to modify operations by reducing hours and limiting face-to-  
129 face contact. COIP staff continually worked throughout the COVID-19 pandemic within  
130 compliance of the state and city ordinances. For example, harm reduction staff wore  
131 personal protection gear (e.g, masks, googles, shields, gloves) and interacted with  
132 clients through separation barriers to minimize interruptions to essential harm reduction  
133 services they provide to PWID in Chicago. On March 10<sup>th</sup>, 2020, COIP temporarily  
134 reduced public access to essential services (e.g., specialized HIV care, SSP),  
135 eliminating two of four sites and reducing hours of operation at open sites by  
136 approximately 50%. In May 2020, both COIP sites transitioned to a hybrid model of in-  
137 person and remote operations and gradually restored mobile services and full staffing at  
138 all sites by June 2021, marking a return to pre-pandemic operations. The effects of  
139 these changes on the accessibility of services for PWID in metropolitan Chicago have  
140 yet to be explored during this period, and to our knowledge, no prior study has  
141 examined PWID’s perception of access to harm reduction services during the  
142 pandemic.

143           **Sample and Recruitment.** The present study uses data from a longitudinal  
144 COVID-19 survey initiated during the pandemic as a supplementary component to an  
145 ongoing longitudinal network and geographic study of young (aged 18-30) PWID and  
146 their injection, sexual, and social support network members in Chicago and the

147 surrounding suburbs (22). To be eligible, the primary participant (i.e., egos) had to (i) be  
148 between ages of 18-30 years old, (ii) have injected drugs at least once in the past  
149 month, (iii) proficiently speak English, and (iv) have resided in the city of Chicago or  
150 surrounding suburbs during the past 12 months. Egos were asked to recruit up to five  
151 members of their injection networks (i.e., alters); alters were eligible for the study if they  
152 were (i) at least 18 years old, (ii) proficiently spoke English, (iii) resided in the city of  
153 Chicago or surrounding suburbs during the past 12 months, and (iv) were referred to the  
154 study by an ego. Egos and enrolled alters were followed every 6 months for up to 36  
155 months to collect sociodemographic, network, geographic, and biologic (HIV/HCV  
156 testing) data. A more detailed description of the methods for the parent study is outlined  
157 in (22).

158 Participants (egos and alters) completing baseline or follow-up for the parent  
159 study were additionally asked to complete a survey on COVID-19 specific questions.  
160 These questions explored the effects of the COVID-19 pandemic on PWID, examining  
161 its implications on socioeconomic status, housing, injection drug use (IDU) behaviors  
162 and practices, and access to treatment and services.

163 We use baseline demographic data from the parent study as well as baseline  
164 and follow-up data from the COVID-19 survey. We used city level COVID-19 mitigation  
165 strategies as well as COIP's service changes during the pandemic to inform a  
166 descriptive analysis of study participants' perceptions of the accessibility of syringes and  
167 naloxone at different points in the pandemic.

168 **Data Collection.** The COVID-19 survey was included in the parent study survey  
169 from May 2020-December 2022. Ego participants were given the opportunity to retake



170 the COVID-19 survey at each remaining 6-month follow-up visit of the parent study,  
171 while alters participated once. Participants were recruited from the COIP field site  
172 located on the West side of Chicago. COIP provides services including syringe  
173 exchange, substance use counseling, and HCV and HIV testing and counseling as well  
174 as conducting research with PWID. The field sites are located in Chicago  
175 neighborhoods with high HIV, HCV, sexually transmitted infection incidence rates, and  
176 drug-related arrests (12). Informed consent was obtained from all study participants  
177 prior to data collection.

178 **Measures.** The present study examines demographic measures from the  
179 baseline responses to the Alter-ego parent study survey in addition to measures from  
180 the COVID-19 sub-study of drug use behaviors, perceptions of drug use risk during the  
181 COVID-19 pandemic, and perceptions of access to harm reduction services during the  
182 COVID-19 pandemic. All responses are self-reported.

183 **Demographics.** Demographic characteristics were taken from the baseline parent  
184 study survey responses and included age, gender, and race/ethnicity. Race/ethnicity  
185 was categorized as non-Hispanic white, non-Hispanic Black, Hispanic, and mixed  
186 race/other. Gender was reported using three categories—male, female, transgender; for  
187 the purposes of analysis, this measure was dichotomized into the categories of male  
188 and non-male.

189 **Drug Use Behaviors during COVID-19.** Drug use behaviors as assessed in the  
190 COVID-19 survey were examined. Participants were asked to report if they were  
191 currently using drugs (*yes/no*) or currently injecting drugs (*yes/no*) Participants were  
192 also asked if their injection frequency had changed as a result of COVID-19 (*decreased*

193 *a lot, decreased somewhat, decreased a little, stayed the same, increased a little,*  
194 *increased somewhat, increased a lot).* and if their use of new, sterile syringes had  
195 changed (*decreased a lot, decreased somewhat, decreased a little, stayed the same,*  
196 *increased a little, increased somewhat, increased a lot).* For analysis, injection  
197 frequency was operationalized to indicate if injection frequency increased as a result of  
198 the pandemic (*yes/no*), and sterile syringe use was operationalized to indicate if sterile  
199 syringe use increased as a result of the pandemic (*yes/no*).

200 *Perceptions of Drug Use Risk during COVID-19.* Two questions in the COVID-19  
201 survey addressed participants' perceptions of risk related to their drug use. Participants  
202 were asked if, since the onset of the COVID-19 pandemic, people are more likely to  
203 share syringes (*more likely, neither more nor less likely, less likely*). Participants were  
204 also asked if the COVID-19 pandemic has changed the degree to which they are  
205 concerned about overdose (*decreased a lot, decreased somewhat, decreased a little,*  
206 *stayed the same, increased a little, increased somewhat, increased a lot*). For analysis,  
207 syringe sharing was operationalized to indicate if participants thought individuals were  
208 more likely to share syringes (*yes/no*), and concern about overdose as a result of  
209 COVID-19 was operationalized to indicate if concern increased (*yes/no*).

210 *Perceptions of Access to Harm Reduction Services.* Participants' perceptions of  
211 access to harm reduction services (e.g., sterile syringes, naloxone) as reported in the  
212 COVID-19 survey were assessed. Regarding sterile syringe access, participants were  
213 asked how their access to syringes now compares to their access prior to the onset of  
214 the COVID-19 pandemic (*access is less difficult now, access is about the same, access*  
215 *is more difficult now*). For analysis, syringe access was operationalized to indicate if

216 participants perceive syringe access as more difficult than prior to the pandemic  
217 (yes/no). Participants were also asked if their source for obtaining new syringes has  
218 changed since the onset of the COVID-19 pandemic (yes/no). Regarding naloxone  
219 access, participants were asked if their access to naloxone has changed since the  
220 onset of the COVID-19 pandemic (yes/no). Additionally, participants were asked if they  
221 were aware of online sources of Narcan/naloxone and harm reduction supplies (yes/no).

222

### 223 ***Statistical Analysis.***

224 Analyses for this study were conducted in SPSS version 28.0.1 and Stata 18.0.  
225 Prior to conducting descriptive analyses, we compared the respondents of the parent  
226 study baseline survey enrolled prior to the onset of the pandemic to those enrolled after  
227 the pandemic began to ascertain if there were any significant differences in their  
228 demographic characteristics, drug use, injection behaviors, or harm reduction usage  
229 profiles and found none.

230 Descriptive analysis of baseline COVID-19 survey participants (N=182) was then  
231 conducted. For categorical variables, response frequencies were calculated, and for  
232 continuous variables the mean and standard deviation were calculated. For variables  
233 that were only relevant to participants who reported engaging in IDU at the time of the  
234 survey, frequency percentages were based on the subset of individuals who responded  
235 “yes” to the question “Are you currently injecting drugs” (N=149). For variables that were  
236 only relevant to participants currently using drugs, but not specifically injection drug use,  
237 frequency percentages were based on the subset of individuals who responded “yes” to  
238 the question “Are you currently using drugs” (N=159).

239           Next, baseline responses across Chicago COVID-19 phases were compared  
240 using Chi-square and Fisher exact tests for all variables except age, which used  
241 independent sample t-tests to compare means. This analysis was conducted to  
242 determine if participant responses to measures of interest changed based on when  
243 during the COVID-19 pandemic their survey was conducted. Chicago COVID-19 phases  
244 were identified using the dates from press releases from the City of Chicago starting in  
245 March of 2020 and ending in March of 2022. Four major phases of the COVID-19 policy  
246 in Chicago were identified, as displayed in Figure 1. For the purposes of analysis,  
247 phases 1 and 2 and phases 3 and 4 were combined to create a pre-vaccine stage  
248 (stage 1) and a post-vaccine phase (stage 2). These phases were combined for  
249 analysis because i) phases 1 and 4 were significantly shorter periods of time than  
250 phases 2 and 3 and creating two phases resulted in two more equal time periods, and ii)  
251 there were many fewer responses to the COVID-19 survey during phase 1 (N=18) and  
252 phase 4 (N=10). All measures were then compared between the pre-vaccine (N=96)  
253 and post-vaccine (N=86) phases using Chi-square and Fisher exact tests and  
254 independent sample t-tests.

255

256 Figure 1: Chicago COVID-19 Mitigation Policy Timeline.

257

258           Mixed effects logistic regression with random subject intercepts was used to  
259 further examine syringe access difficulty in repeated assessments over time as  
260 predicted by COVID-19 phase. In addition to COVID-19 phase, other potential  
261 covariates were explored using Chi-square and Fisher exact tests and independent

262 sample t-tests to compare frequencies and means by perceived syringe access difficulty  
 263 for baseline responses. Cluster robust variance estimators were used to estimate  
 264 standard errors and 95% confidence intervals.

265

## 266 RESULTS

### 267 *Baseline Descriptive Analyses*

268 Table 1 displays the results of the descriptive analysis of baseline responses to  
 269 the COVID-19 survey as well as the results of the comparison of responses by COVID-  
 270 19 phase. The sample was primarily male (70.6%) and non-Hispanic white (57.6%) with  
 271 a mean age of initiation into parent study at 28.1 years old. Most of the sample reported  
 272 currently injecting drugs (81.9%), with significantly ( $p=0.011$ ) more participants doing so  
 273 post-vaccine availability (phase 2) (89.5%) than pre-vaccine (phase 1) (75%). A  
 274 sizeable proportion (32.2%) also reported increasing injection frequency to some  
 275 degree, though not statistically significant.

276

277 Table 1: Description of Baseline Survey Results and Comparison of COVID-19 Phase 1  
 278 and Phase 2 Survey Results. (N=182)

Variable	Responses	Frequency (%)	Pre-Vaccine Frequency (%)	Post-Vaccine Frequency (%)	p-value <sup>t</sup>
<b>Demographics</b>					
Age	Mean (S.d)	28.08 (5.29)	27.51 (4.59)	28.77 (5.97)	.116
Gender	Male	125 (70.6%)	67 (69.8%)	58 (71.6%)	.792
	Not Male	52 (29.4%)	29 (30.2%)	23 (28.4%)	
Race/ethnicity	White	102 (57.6%)	58 (60.4%)	44 (54.3%)	.628
	Black	11 (6.2%)	7 (7.3%)	4 (4.9%)	
	Hispanic	53 (29.9%)	25 (26.0%)	28 (34.6%)	
	Mixed/Other	11 (6.2%)	6 (6.3%)	5 (6.2%)	
Currently Using Drugs	Yes	159 (87.4%)	79 (82.3%)	80 (93.0%)	.030

	No	23 (12.6%)	17 (17.7%)	6 (7.0%)	
Currently Injecting Drugs	Yes	149 (81.9%)	72 (75.0%)	77 (89.5%)	.011
	No	33 (18.1%)	24 (25.0%)	9 (10.5%)	
Increased sterile syringe use (N=149)	Yes	26 (17.34%)	8 (11.1%)	18 (23.4%)	.049
	No	123 (82.6%)	64 (88.9%)	59 (76.6%)	
Increased injection frequency (N=149)	Yes	48 (32.2%)	18 (25.0%)	30 (39.0%)	.068
	No	101 (67.8%)	54 (75.0%)	47 (61.0%)	
People more likely to share syringes (N=149)	Yes	29 (22.5%)	15 (23.4%)	14 (21.5%)	.796
	No	100 (77.5%)	49 (76.6%)	51 (78.5%)	
Increased concern about overdose	Yes	26 (16.6%)	11 (14.3%)	15 (18.8%)	.452
Increased syringe access difficulty (N=149)	Yes	40 (27.6%)	26 (36.6%)	14 (18.9%)	.017
	No	105 (72.4%)	45 (63.4%)	60 (81.1%)	
Source for obtaining new syringes changed (N=149)	Yes	23 (15.4%)	12 (16.7%)	11 (14.3%)	.688
	No	126 (84.6%)	60 (83.3%)	66 (85.7%)	
Access to Narcan changed (N=159)	Yes	18 (11.4%)	11 (14.1%)	7 (8.8%)	.290
	No	140 (88.6%)	67 (85.9%)	73 (91.3%)	
Aware of online sources of Narcan (N=159)	No	108 (67.9%)	60 (75.9%)	48 (60.0%)	.031
	Yes	51 (32.1%)	19 (24.1%)	32 (40.0%)	

279 †p-values are the results of Chi-square tests for categorical variables, Fisher exact tests for categorical  
 280 variables with expected counts less than five, and independent sample t-tests for continuous variables.  
 281

282 Sterile syringe use did significantly change between phases, with more  
 283 participants reporting increased sterile syringe use post-vaccine (23.4%) than pre-  
 284 vaccine (11.1%). Most participants reported that they were not more likely (77.5%) to  
 285 share syringes since the onset of the pandemic. Additionally, most (83.4%) participants  
 286 did not report concern about overdose increasing compared to prior to the pandemic.  
 287 Most participants (84.6%) reported their syringe source location(s) to be unchanged and  
 288 access to syringes during the COVID-19 pandemic (72.4%) to not be more difficult.

289 However, there was a significant difference between phase 1 and 2 ( $p=.017$ ); 18% more  
 290 participants reported increased difficulty in syringe access in phase 1 of the pandemic  
 291 than in phase 2.

292

### 293 **Mixed Effects Logistic Regression**

294 Table 2 displays the results of exploratory analysis of potential predictors of  
 295 syringe access difficulty using baseline data. Syringe access difficulty was significantly  
 296 different across COVID-19 phases ( $p=.017$ ). Syringe access difficulty was also  
 297 significantly related to perceiving people as more likely to share syringes ( $p<.001$ ).  
 298 Additionally, a change in the source for obtaining new syringes was significantly  
 299 associated with increased syringe access difficulty ( $p<.001$ ). Age, race/ethnicity, and  
 300 gender were not significantly associated with increased syringe access difficulty.

301

302 Table 2: Baseline Comparison of Potential Predictors of Perceived Syringe Access  
 303 Difficulty (N=149)

Variable	Responses	Increased Syringe Access Difficulty		p-value <sup>t</sup>
		Yes Freq. (%)	No Freq. (%)	
Post-Vaccine Phase	Yes	14 (35.0%)	60 (57.1%)	.017
	No	26 (65.0%)	45 (42.9%)	
Age	Mean (S.D.)	27.08 (2.89)	27.63 (4.72)	.377
Gender	Male	25 (64.1%)	72 (70.6%)	.457
	Not Male	14 (35.9%)	30 (29.4%)	
Race/ethnicity	White	24 (61.5%)	63 (61.8%)	.456
	Black	1 (2.6%)	8 (7.8%)	
	Hispanic	11 (28.2%)	28 (27.5%)	
	Mixed/Other	6 (4.3%)	3 (2.9%)	
Increased sterile syringe use	Yes	7 (17.5%)	17 (16.2%)	.850
	No	33 (82.5%)	88 (83.8%)	
Increased injection frequency	Yes	12 (30.0%)	36 (34.3%)	.624

	No	28 (70.0%)	69 (65.7%)	
People more likely to share syringes	Yes	16 (43.2%)	11 (12.5%)	<.001
	No	21 (56.8%)	77 (87.5%)	
Source for obtaining new syringes changed	Yes	16 (40.0%)	7 (6.7%)	<.001
	No	24 (60.0%)	98 (93.3%)	

304 †p-values are the results of Chi-square tests for categorical variables, Fisher exact tests for categorical  
 305 variables with expected counts less than five, and independent sample t-tests for continuous variables.  
 306

307 Table 3 shows the results of a mixed effects logistic regression model with  
 308 random intercepts. Odds ratios and 95% confidence intervals based on cluster robust  
 309 standard error estimates are reported. Individuals in the post-vaccine phase had  
 310 significantly lower odds of reporting increased difficulty in accessing syringes (OR: 0.28;  
 311 p=.003). Additionally, a changed source for obtaining new syringes resulted in  
 312 significantly higher odds of reporting increased difficulty in access syringes (OR: 7.49;  
 313 p<.0005). Perceiving people as more likely to share syringes also resulted in increased  
 314 odds of reporting increased difficulty in accessing syringes (OR: 2.29; p=.040). Gender,  
 315 age, and race/ethnicity did not significantly change the odds of reporting increased  
 316 difficulty in access syringes.

317

318 Table 3: Results of Mixed Effects Logistic Regression Predicting Syringe Access

	OR	95% Confidence Interval		p-value
Fixed Effects:				
Post-Vaccine Phase	0.28	0.12	0.65	.003
Source for obtaining new syringes changed	7.49	2.50	22.48	<.0005
People more likely to share syringes	2.29	1.04	5.05	.040
Male	0.60	0.28	1.27	.182
Age	0.97	0.90	1.05	.523



White	0.53	0.04	6.85	.624
Black	0.35	0.02	6.75	.487
Hispanic	0.39	0.03	5.84	.497
	Variance	Robust Std. Err.		
Random Effects:				
Intercept	.05	.69		

319

320

## 321 **DISCUSSION**

322 Our study examined changes in perceptions of access to harm reduction during the  
323 COVID-19 pandemic among a sample of people who inject drugs in Chicago. Analyzing  
324 baseline responses, we found that fewer participants during phase 2 of the COVID-19  
325 pandemic in Chicago indicated difficulty in accessing syringes than in phase 1. This  
326 finding was supported by mixed effects logistic regression results which showed  
327 significantly decreased odds in reporting increased difficulty in accessing syringes  
328 during the post-vaccine COVID-19 phase. Changing syringe sources and perceiving  
329 individuals to be more likely to share syringes also resulted in increased odds of  
330 reporting increased difficulty in accessing syringes. These findings indicated that,  
331 among this sample of PWID, access to syringes was perceived as less difficult as the  
332 pandemic progressed, and that individuals who reported changing syringe sources and  
333 reported that people increased syringe sharing during the pandemic were also more  
334 likely to report increased difficulty in accessing syringes.

335 The change in perceptions of access to syringes across COVID-19 phases can  
336 be interpreted through both changes to Chicago city policy as well as the policy  
337 changes at COIP (as described in the Introduction), which is a primary source of harm

338 reduction services for many study participants. The stay-at-home order that was in  
339 effect from March, 2020 through the beginning of June, 2020 likely limited both study  
340 participants' ability to access syringe exchange programs as well as programs' ability to  
341 remain staffed and open (as evidenced by changes in COIP service provision). Existing  
342 literature shows that many syringe exchange programs in other locations were quick to  
343 adapt their programs through window, mobile, and telehealth services to minimize  
344 interruptions to service. This was the case at COIP as well, where needle exchange  
345 services were never stopped, and a window service had been established to continue to  
346 provide syringes (19,20). In addition, as the pandemic progressed, COIP increased their  
347 mobile services. These quick policy adaptations at COIP could explain why most  
348 participants did not perceive syringe access as changing during the pandemic.  
349 Additionally, the stay-at-home order lifting and staff returning to COIP as well as mobile  
350 services expanding could explain why more individuals in the beginning of the pandemic  
351 reported difficulty in accessing syringes as opposed to later in the pandemic.

352         The results of this study align with the extant literature on harm reduction access  
353 changes during the pandemic from the perspective of service providers. The present  
354 study's results indicate that for most PWID in this sample, access to syringes and  
355 Narcan did not become more difficult during the pandemic supporting the efficacy of  
356 window and mobile syringe programs suggested by previous research. While it is  
357 important that individuals did not perceive significant barriers to access to harm  
358 reduction services, perceptions in access may not reflect the realities of engagement in  
359 the services. Some studies have reported increases in overdose and risk behaviors  
360 among PWID in Chicago during the pandemic, suggesting engagement in harm

361 reduction services may be lower as a result of the pandemic despite perceptions of  
362 access not changing (5,23). Factors that influence risk taking behaviors and  
363 engagement in harm reduction such as housing stability, mental health, and social  
364 support worsened, which increased barriers to engagement in harm reduction services  
365 resulting in poorer health outcomes for PWID (5). In the case of the present study,  
366 individuals who responded to this survey were doing so as part of engagement in a  
367 harm reduction service provider (COIP), meaning that these are individuals who were  
368 able to receive these services and sought them out. While these individuals mostly  
369 reported harm reduction access as remaining the same as prior to the pandemic, they  
370 already had the ability to engage in these resources prior to seeking access. While  
371 many PWID are able to access essential harm reduction services such as clean  
372 syringes and Narcan, it is also essential to understand what barriers during the COVID-  
373 19 pandemic may have prevented PWID from engaging with these services.

374 Furthermore, while the results of this study indicate that adaptations to standard  
375 SSP services through window service and mobile service are effective ways of  
376 providing harm reduction services to PWID in Chicago, this study did not examine the  
377 impacts of the COVID-19 pandemic on participants' perceptions of access to other  
378 services at COIP such as in-person counseling and HIV and HPV care. Prior studies  
379 from the perspective of harm reduction providers have shown that these in-person  
380 services were greatly reduced during COVID-19. Future research should consider how  
381 the loss of these in-person services may have impacted PWID during the pandemic and  
382 specifically how they may have impacted continued engagement in harm reduction  
383 services.

384           *Limitations.* The current study is primarily limited by its sampling methods, which  
385 reduces the generalizability of the results to populations outside of the sample of PWID  
386 who participated in the study. Furthermore, this study recruited individuals and  
387 administered surveys through a harm reduction service provider (COIP). This biases the  
388 sample toward individuals who engaged in harm reduction services. Additionally,  
389 measures in the study reflected participants' perceptions which means measurement  
390 error may occur due to different interpretations of, for example, what it means for  
391 something to be difficult or increase or decrease. Also, all survey questions were self-  
392 report, which creates the potential for response bias such as social desirability bias.

393

## 394 **CONCLUSION**

395           The present study examined changes in PWID's perceptions of access to harm  
396 reduction services in Chicago throughout the COVID-19 pandemic. Using data from an  
397 ongoing longitudinal study of PWID in Chicago and a COVID-19 specific sub study we  
398 analyzed participants' perceptions of access to syringes and Narcan across phases of  
399 COVID-19 mitigation policies in Chicago as well as using mixed effects logistic  
400 regression to explore predictors of perceived increased difficulty in syringe access. The  
401 results of this analysis indicated that study participants perceived access to syringes  
402 and Narcan to be similar as compared to prior to the pandemic, while more participants  
403 found syringe access more difficult in the early part of the pandemic than later. These  
404 findings suggest that policy adaptations by COIP (the main harm reduction service  
405 provider of study participants) allowed for minimal disruption in this sample of PWID's  
406 access to syringes and Narcan. Further research is needed to understand the effects of

407 the pandemic on PWID's access to other essential harm reduction services such as  
408 counseling and HIV/HPV testing as well as how the pandemic affected engagement by  
409 PWID in all harm reduction services.

410

411

412

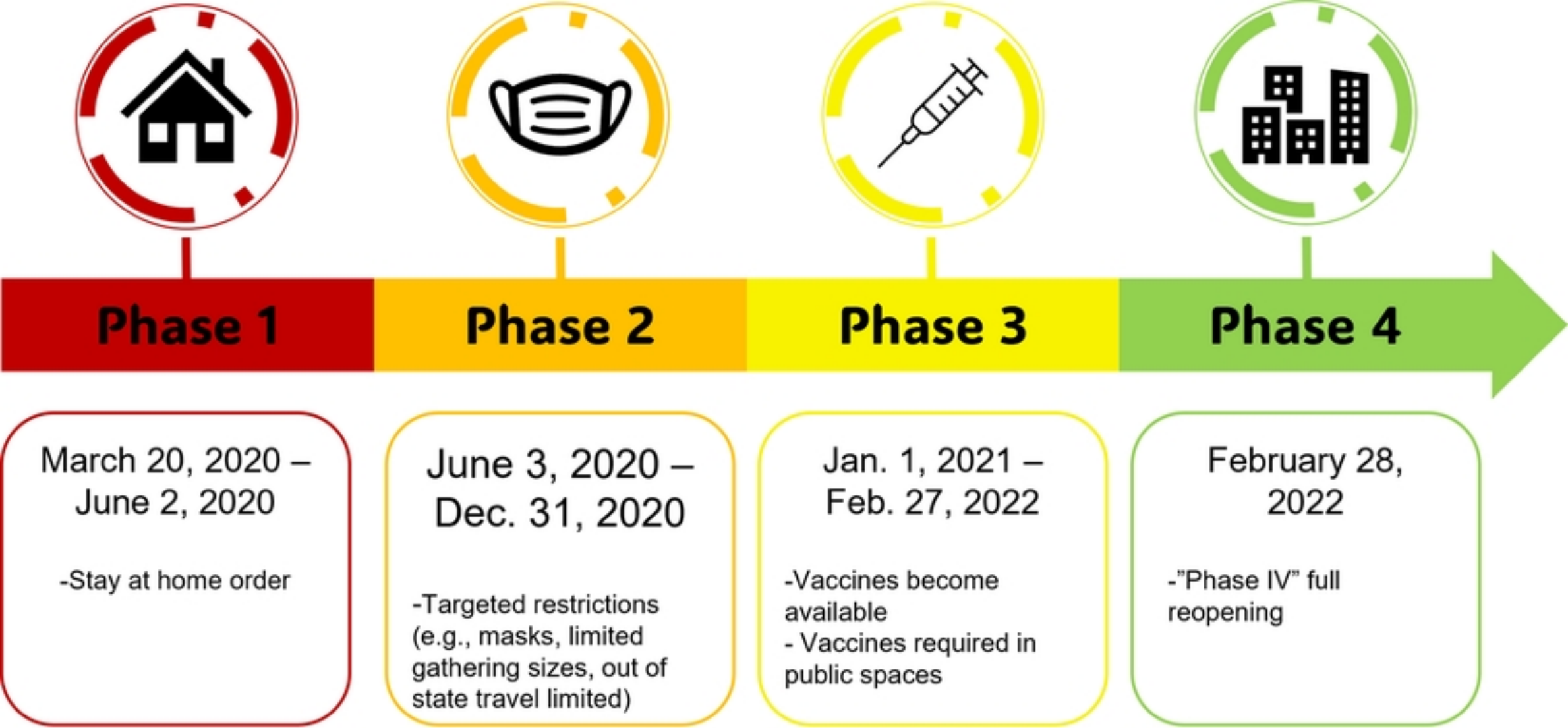
## 413 REFERENCES

414

- 415 1. Wang QQ, Kaelber DC, Xu R, Volkow ND. COVID-19 risk and outcomes in patients  
416 with substance use disorders: analyses from electronic health records in the United  
417 States. *Mol Psychiatry*. 2021 Jan;26(1):30–9.
- 418 2. CDC. Centers for Disease Control and Prevention. 2020 [cited 2023 Aug 15].  
419 COVID-19 and Your Health. Available from: [https://www.cdc.gov/coronavirus/2019-  
420 ncov/need-extra-precautions/people-who-are-immunocompromised.html](https://www.cdc.gov/coronavirus/2019-ncov/need-extra-precautions/people-who-are-immunocompromised.html)
- 421 3. Vasylyeva TI, Smyrnov P, Strathdee S, Friedman SR. Challenges posed by COVID-  
422 19 to people who inject drugs and lessons from other outbreaks. *Journal of the  
423 International AIDS Society*. 2020;23(7):e25583.
- 424 4. Ahern J, Stuber J, Galea S. Stigma, discrimination and the health of illicit drug  
425 users. *Drug and Alcohol Dependence*. 2007 May;88(2–3):188–96.
- 426 5. Aponte-Melendez Y, Mateu-Gelabert P, Fong C, Eckhardt B, Kapadia S, Marks K.  
427 The impact of COVID-19 on people who inject drugs in New York City: increased  
428 risk and decreased access to services. *Harm Reduction Journal*. 2021 Nov  
429 24;18(1):118.
- 430 6. Eckhardt B, Winkelstein ER, Shu MA, Carden MR, McKnight C, Des Jarlais DC, et  
431 al. Risk factors for hepatitis C seropositivity among young people who inject drugs in  
432 New York City: Implications for prevention. *PLoS One*. 2017 May  
433 19;12(5):e0177341.
- 434 7. Galea S, Vlahov D. Social determinants and the health of drug users:  
435 socioeconomic status, homelessness, and incarceration. *Public Health Rep*.  
436 2002;117(Suppl 1):S135–45.
- 437 8. Hagan H, Des Jarlais DC. HIV and HCV infection among injecting drug users. *Mt  
438 Sinai J Med*. 2000;67(5–6):423–8.
- 439 9. Klevens RM, Hu DJ, Jiles R, Holmberg SD. Evolving Epidemiology of Hepatitis C  
440 Virus in the United States. *Clin Infect Dis*. 2012 Jul;55(Suppl 1):S3–9.

- 441 10. Paquette CE, Syvertsen JL, Pollini RA. Stigma at Every Turn: Health Services  
442 Experiences among People Who Inject Drugs. *Int J Drug Policy*. 2018 Jul;57:104–  
443 10.
- 444 11. Jemberie WB, Stewart Williams J, Eriksson M, Grönlund AS, Ng N, Blom Nilsson M,  
445 et al. Substance Use Disorders and COVID-19: Multi-Faceted Problems Which  
446 Require Multi-Pronged Solutions. *Front Psychiatry*. 2020 Jul 21;11:714.
- 447 12. Williams LD, Lee E, Latkin C, Mackesy-Amiti ME, Kaufmann M, Copulsky E, et al.  
448 Economic Challenges and Behavioral and Mental Health Risks for Overdose during  
449 the COVID-19 Pandemic among People Who Inject Drugs. *Int J Environ Res Public*  
450 *Health*. 2022 Apr 28;19(9):5351.
- 451 13. Glick SN, Prohaska SM, LaKosky PA, Juarez AM, Corcorran MA, Des Jarlais DC.  
452 The Impact of COVID-19 on Syringe Services Programs in the United States. *AIDS*  
453 *Behav*. 2020;24(9):2466–8.
- 454 14. Abadie R, Gelpi-Acosta C, Aquino-Ruiz F, Aponte-Melendez Y. COVID-19 risks  
455 among people who inject drugs in Puerto Rico. *Int J Drug Policy*. 2021  
456 Jul;93:102903.
- 457 15. Puzhko S, Eisenberg MJ, Filion KB, Windle SB, Hébert-Losier A, Gore G, et al.  
458 Effectiveness of Interventions for Prevention of Common Infections Among Opioid  
459 Users: A Systematic Review of Systematic Reviews. *Frontiers in public health*.  
460 2022;10:749033–749033.
- 461 16. Beyrer C, Malinowska-Sempruch K, Kamarulzaman A, Kazatchkine M, Sidibe M,  
462 Strathdee SA. Time to act: a call for comprehensive responses to HIV in people who  
463 use drugs. *The Lancet*. 2010 Aug 14;376(9740):551–63.
- 464 17. Pollack HA, Khoshnood K, Blankenship KM, Altice FL. The Impact of Needle  
465 Exchange-based Health Services on Emergency Department Use. *J Gen Intern*  
466 *Med*. 2002 May;17(5):341–8.
- 467 18. Vearrier L. The value of harm reduction for injection drug use: A clinical and public  
468 health ethics analysis. *Disease-a-Month*. 2019 May 1;65(5):119–41.
- 469 19. Austin EJ, Corcorran MA, Briggs ES, Frost MC, Behrends CN, Juarez AM, et al.  
470 Barriers to engaging people who use drugs in harm reduction services during the  
471 COVID-19 pandemic: A mixed methods study of syringe services program  
472 perspectives. *International Journal of Drug Policy*. 2022 Nov 1;109:103825.
- 473 20. Thakarar K, Kohut M, Hutchinson R, Bell R, Loeb HE, Burris D, et al. The impact of  
474 the COVID-19 pandemic on people who inject drugs accessing harm reduction  
475 services in an rural American state. *Harm Reduct J*. 2022 Jul 22;19:80.

- 476 21. Brener L, Horwitz R, Rance J, Caruana T, Bryant J. Health worker perceptions of  
477 the impact of COVID-19 on harm reduction services for people who inject drugs.  
478 Health & Social Care in the Community. 2022;30(6):2320–9.
- 479 22. Mackesy-Amiti ME, Falk J, Latkin C, Kaufmann M, Williams L, Boodram B.  
480 Egocentric network characteristics of people who inject drugs in the Chicago metro  
481 area and associations with hepatitis C virus and injection risk behavior. Harm  
482 Reduction Journal. 2022 Jun 2;19(1):58.
- 483 23. Friedman JR, Hansen H. Evaluation of Increases in Drug Overdose Mortality Rates  
484 in the US by Race and Ethnicity Before and During the COVID-19 Pandemic. JAMA  
485 Psychiatry. 2022 Apr 1;79(4):379–81.
- 486



Figure