

1

2

3

4 **Polymorphism *Q223R* of the leptin receptor (*LEPR*) - a**

5 **possible relationship with adaptation to non-tropical climate**

6 **in Yakuts**

7

8

9 Pavlova N.I.^{1¶}, Bochurov A.A.^{1¶*}, Alekseev V.A.^{2¶}, Krylov A.V.^{1¶}, Sydykova
10 L.A.^{3¶}, Kurtanov Kh.A.^{4¶}

11

12

13

14 ¹ Laboratory of Hereditary Pathology, Department of Molecular Genetics, Federal State
15 Budgetary Scientific Institution “Yakut Science Center of Complex Medical Problems”,
16 Yakutsk, Republic of Sakha (Yakutia), Russia.

17

18 ² Department of the Arctic Medical Center, Federal State Budgetary Scientific Institution
19 “Yakut Science Center of Complex Medical Problems”, Yakutsk, Republic of Sakha
20 (Yakutia), Russia.

21

22 ³ Head of the Department "Propaedeutic and Faculty Therapy with Endocrinology and
23 Medical Physical Culture", Medical Institute, Federal State Autonomous Educational
24 Institution of Higher Education "M. K. Ammosov North-Eastern Federal University",
25 Yakutsk, Republic of Sakha (Yakutia), Russia.

26

27 ⁴ Federal State Autonomous Educational Institution of Higher Education "M. K. Ammosov
28 North-Eastern Federal University", Yakutsk, Republic of Sakha (Yakutia), Russia.

29 E-mail: bochur92@gmail.com (BAA)

NOTE: This preprint reports new research that has not been certified by peer review and should not be used to guide clinical practice.

30

31 Abstract

32 Obesity is an energy imbalance that occurs due to a lack of energy intake and
33 consumption. We studied the variability of the *Q223R* polymorphism of the *LEPR*
34 gene in the Yakut population and the relationship with body mass index (BMI) and
35 abdominal obesity in a sample of Yakuts (n=336), consisting of individuals with
36 obesity (n=185) and normal weight (n=151). For genotyping, we used the classical
37 methods of PCR-RFLP analysis. A comparative analysis of the obtained data on the
38 frequencies of alleles and genotypes with data on other populations of the world was
39 also carried out. The G variant allele frequency was 79.5% in normal weight patients
40 and 82.7% in obese patients. Genotype analysis showed a high frequency of
41 genotypes GG - 64.2% and GA - 30.5% in the group with normal BMI and GG -
42 69.7% and GA - 25.9% in the group with high BMI. There was no significant
43 difference in the frequency of alleles and genotypes of the *Q223R* polymorphism
44 between the groups. It was established that the frequency of the G allele of the
45 Yakuts (79.5%) with the populations of East Asia (86.9%). When analyzing the
46 average anthropometric values, depending on the genotype, a statistically significant
47 difference in waist circumference was found in persons with abdominal obesity (p =
48 0.03), so it was greater in carriers of the heterozygous AG genotype than in carriers
49 of the GG genotype.

50 In conclusion, our study demonstrates that SNP *Q223R* (*LEPR*) is possible
51 and has some effect on anthropometric parameters in the Yakut population, but
52 differs from studies conducted on samples of European ethnicity. It can be assumed
53 that the accumulation of the G allele of the *Q223R* polymorphism (*LEPR*) in the
54 Yakut population, as well as in the populations of East Asia, is probably the result
55 of metabolic adaptation to living conditions in a non-tropical climate.

56 Introduction

57 Over the past few decades, the prevalence and incidence of obesity have
58 increased rapidly worldwide and reached epidemic proportions. Obesity is
59 associated with many adverse consequences, such as type 2 diabetes,
60 hypercholesterolemia, hypertension or heart disease, and is directly associated with
61 increased mortality and reduced life expectancy [1]. With the completion of the
62 Human Genome Project and the first large genome-wide association studies, an
63 increasing number of risk alleles associated with obesity have been identified, some
64 in genes not previously known to be associated with obesity. However, to date,
65 genome-wide association studies have identified only a small percentage of genetic
66 variation significantly associated with obesity or body mass index for most ethnic
67 groups.

68 The mechanisms and genetic basis of the influence of diet and habitat remain
69 unclear. One widely studied candidate gene for obesity, the leptin receptor (*LEPR*)
70 gene, is located in the biological pathway to obesity (leptin-insulin pathway). Leptin
71 is produced in adipose tissue in proportion to its mass and in other organs. It is
72 known to have pleiotropic effects, including the regulation of several neuropeptides
73 involved in appetite control and thermogenesis. Numerous studies have tested two
74 nonsynonymous single nucleotide polymorphisms of the *LEPR* gene (*Q223R* and
75 *K109R*) for association with obesity and type 2 diabetes, with inconclusive results
76 [2, 3]. Recently, many studies have been published on the association between *LEPR*
77 variants and obesity, including studies of the interaction of these variants with sex
78 or other factors. Of these two polymorphisms, the *Q223R* polymorphism results
79 from a nonconservative A to G substitution at codon 223, resulting in a change of
80 the amino acid glutamine to arginine. This functional variant reduces leptin
81 binding and thus impairs leptin signaling. Data from studies of the *Q223R*
82 polymorphism are very contradictory, taking into account the results obtained in
83 patients from different ethnic groups, which makes further studies of polymorphic
84 loci of the *LEPR* gene relevant.

85 The purpose of this study was to conduct a comparative analysis of the
86 frequencies of alleles and genotypes of the *Q223R* polymorphism of the *LEPR* gene
87 in the Yakut population in samples with normal weight and obesity, and also to
88 compare the data obtained with other populations in the world.

89 **Materials and methods**

90 **Participants**

91 The experimental part of the study on genotyping the *Q223R* polymorphism
92 of the *LEPR* gene was carried out in the laboratory of hereditary pathology of the
93 department of molecular genetics of the Yakut Scientific Center for Complex
94 Medical Problems (YSC CMP). The research material was DNA samples from the
95 collection of biomaterial (DNA) of populations of the Republic of Sakha (Yakutia)
96 YSC CMP, using the Unique scientific equipment (USE) “The Genome of Yakutia”
97 (No. USU_507512). The study included participants who filled out a questionnaire
98 approved by the Local Committee on Biomedical Ethics at the YSC CMP and
99 voluntarily signed an informed consent to conduct a genetic study.

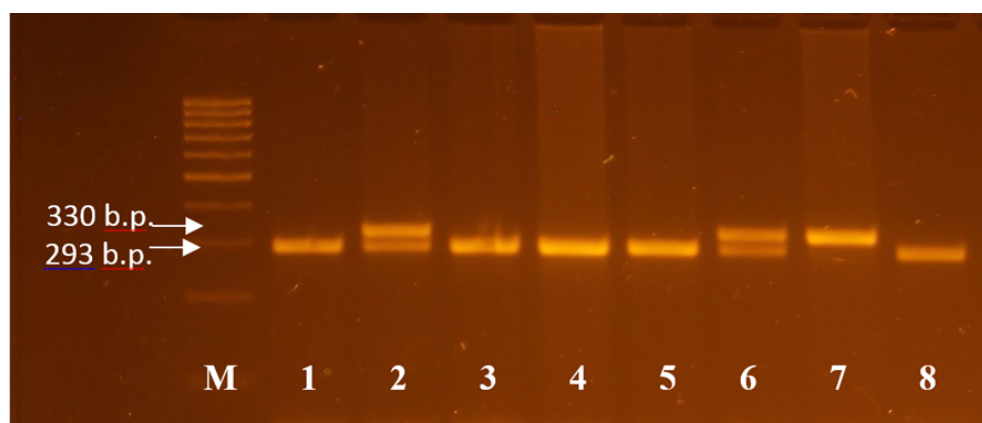
100 A total of 336 DNA samples from volunteers without chronic diseases (117
101 women and 219 men) of Yakut nationality, whose average age was 47.4 ± 0.06 years,
102 were studied. Two groups of subjects were formed: a group with normal BMI
103 ($n=151$), a group with obesity ($n=185$). In accordance with WHO recommendations,
104 obesity was diagnosed with a BMI > 30 kg/m²; indicators from 18.0 to 24.9 kg/m²

105 were considered normal. Abdominal obesity was diagnosed when the waist
106 circumference exceeded 88 cm in women and 102 cm in men.

107 Genetic Analyses

108 To carry out molecular genetic analysis, genomic DNA samples were isolated
109 from whole blood using a commercial DNA isolation kit Newteryx (Yakutsk,
110 Russia). Single nucleotide polymorphism was determined by polymerase chain
111 reaction (PCR) followed by restriction fragment length polymorphism (RFLP)
112 analysis. Amplification of the gene region containing the polymorphic variant was
113 carried out with standard pairs of primers Forward: 5'-
114 ACCCTTTAAGCTGGGTGTCCCAAATAG-3' and Reverse: 5' -
115 AATGTCAGTTCAGCCCATAAATATGG -3'. PCR temperature conditions were
116 as follows: 94°C for 4 min, followed by 35 cycles at 94°C for 1 min, 62°C for 1 min,
117 and 72°C for 1 min, and a final extension at 72°C for 5 min. The RFLP mixture with
118 a volume of 20 µl consisted of: amplifier - 7 µl, deionized water - 10.9 µl, restriction
119 buffer - 2 µl and restriction endonuclease MspI (2 u.a.). Interpretation of the
120 genotyping results was performed based on different patterns of gene region bands
121 (Fig 1).

122 **Fig 1. Electropherogram of the *LEPR* gene region in a 4% agarose gel after**
123 **RFLP.** 1 - Step 100 marker; 7 – genotype AA (330 bp); 2 and 6 – genotype AG
124 (330, 293 bp); 1, 3,4,5,8 – genotype GG (293 bp).



126 Statistical analyses

127 Statistical analysis of the research results was carried out using the program:
128 “Office Microsoft Excel 2010”, “Statistica 8.0”. When analyzing the association
129 between the frequency of an unfavorable allele and obesity, a four-field contingency
130 table and the χ -square test with Yates' correction were used. To assess the

131 significance of the odds ratio, the boundaries of the 95% confidence interval (CI
132 95%) were calculated. To calculate the odds ratio, the following formula was used:
133 $OR = "A*D" / "B*C"$ (where OR is the odds ratio; A, B, C, D is the number of
134 observations in the cells of the contingency table). To assess the normality of the
135 sample distribution, the Kolmogorov–Smirnov test was used, which indicated a
136 distribution different from normal. Pairwise comparison of mean BMI values
137 depending on genotype was carried out using the Mann–Whitney test. Results were
138 considered significant at $p < 0.05$.

139 Results

140 The variability of the *Q223R* polymorphism of the *LEPR* gene in the Yakut
141 population and the effect on obesity (abdominal obesity) in Yakuts with high and
142 normal BMI were studied. The study sample consisted of 336 patients of Yakut
143 nationality. Overweight or obesity ($BMI > 30 \text{ kg/m}^2$) was observed in 185 (55%)
144 patients. The allele frequency of the G variant of the *Q223R* polymorphism of the
145 *LEPR* gene was 79.5% in patients with normal weight and 82.7% in patients with
146 obesity and corresponded to the Hardy-Weinberg equilibrium ($p = 0.415$ and $p =$
147 0.205 , respectively). Analysis of genotypes showed a high frequency of genotypes
148 GG - 64.2% and GA - 30.5% in the group with normal BMI and GG - 69.7% and
149 GA - 25.9% in the group with high BMI.

150 **Table 1. Frequency distribution of alleles and genotypes of the *rs1137101***
151 **polymorphism of the *LEPR* gene with odds ratio (OR)**

Groups	Alleles		Genotypes					
			Codominant model of inheritance		Dominant model of inheritance		Recessive model of inheritance	
	A	G	AG	GG	AA	AG+GG	AA+AG	GG
With normal BMI (n=151)	20,5 (62)	79,5 (240)	30,5 (46)	64,2 (97)	5,3 (8)	94,7 (143)	35,8 (54)	64,2 (97)
Obese (n=185)	17,3 (64)	82,7 (306)	25,9 (48)	69,7 (129)	4,3 (8)	95,7 (177)	30,3 (56)	69,7 (129)
OR (95%)	1,23 (0,8-1,8)		1,04 (0,4-3)	1,33	1,24 (0,4-3,4)		1,28 (0,8-2)	

				(0,5-3,7)				
P	0,33		0,85	0,77	0,87		0,34	
Men with normal BMI (n=105)	20,5 (43)	79,5 (167)	31,4 (33)	63,8 (67)	4,8 (5)	95,2 (100)	36,2 (38)	63,8 (67)
Obese men (n=114)	15,4(35)	84,6(193)	27,2(31)	71,1(81)	1,8(2)	98,2(112)	28,9(33)	71,1(81)
OR (95%)	1,42 (0,9-2,3)		2,35 (0,4-13)	3,02 (0,6-16,1)	2,8 (0,5-14,7)		1,39 (0,8-2,5)	
P	0,2		0,55	0,33	0,38		0,32	
Women with normal BMI (n=46)	20,7(19)	79,3(73)	28,3(13)	65,2(30)	6,5(3)	93,5(43)	34,8(16)	65,2(30)
Obese women (n=71)	20,4(29)	79,6(113)	23,9(17)	67,6(48)	8,5(6)	91,5(65)	32,4(23)	67,6(48)
OR (95%)	1,01 (0,5-1,9)		0,65 (0,1-3,1)	0,8 (0,2-3,4)	0,76 (0,2-3,2)		1,1 (0,5-2,4)	
P	0,9		0,88	0,95	0,98		0,95	
With normal BMI (n=151)	20,5(62)	79,5(240)	30,5(46)	64,2(97)	5,3(8)	94,7(143)	35,8(54)	64,2(97)
With abdominal obesity (n=156)	17,6(55)	82,4(257)	25,0(39)	69,9(109)	5,1(8)	94,9(148)	30,1(47)	69,9(109)
OR (95%)	1,21 (0,8-1,8)		0,85 (0,3-2,5)	1,12 (0,4-3,1)	1,03 (0,4-2,8)		1,29 (0,8-2,1)	
P	0,42		0,98	0,97	0,85		0,35	
Without abdominal obesity (n=29)	15,5(9)	84,5(49)	31,0(9)	69,0(20)	0	100(29)	31,0(9)	69,0(20)
With abdominal obesity (n=128)	17,6(55)	82,4(257)	25,0(39)	69,9(109)	5,1(8)	94,9(148)	30,1(47)	69,9(109)
OR (95%)	0,86(0,4-1,8)		0,74 (0,3-1,8)	1,04 (0,4-2,5)	0		1,04(0,4-2,5)	
P	0,84		0,41	0,49	0,45		0,9	

152 Note: BMI – body mass index values, p – significance of the χ -square test with
 153 Yates' correction, OR – odds ratio, n – number of patients

154 The frequency of alleles and genotypes does not differ in the sample of Yakuts
155 with normal BMI and Yakuts with high BMI. There are also no differences in the
156 frequency of alleles and genotypes based on gender and the presence of abdominal
157 obesity. Analysis of the association between *Q223R LEPR* and obesity in the normal
158 BMI sample and in the obese sample is presented in Table 2.

159 **Table 2. Average BMI values depending on the *Q223R* genotype of the *LEPR***
160 **gene**

Genotypes	n	BMI	U	p
Obese				
AA	8	34 ± 1,22	215,5 (<i>AA/AG</i>)	>0,05
AG	48	33,4 ± 0,15	3063 (<i>AG/GG</i>)	>0,05
GG	129	33,1 ± 0,07	601 (<i>AA/GG</i>)	>0,05
With normal BMI				
AA	8	22,1 ± 0,69	145 (<i>AA/AG</i>)	>0,05
AG	46	22,7 ± 0,18	2128 (<i>AG/GG</i>)	>0,05
GG	97	22,6 ± 0,12	332,5 (<i>AA/GG</i>)	>0,05
With abdominal obesity				
AA	8	34 ± 1,22	161,5 (<i>AA/AG</i>)	>0,05
AG	39	33,9 ± 0,17	2247 (<i>AG/GG</i>)	>0,05
GG	109	33,5 ± 0,08	475 (<i>AA/GG</i>)	>0,05

161 Note: BMI – body mass index values, n – number of patients, U – Mann Whitney
162 test, p – significance of the Mann Whitney test

163 When analyzing the average anthropometric values depending on the
164 genotype, it is noted that the BMI in carriers of the heterozygous AG genotype was
165 greater than in carriers of the GG genotype. Moreover, in the obese sample, carriers
166 of the AA genotype had the highest BMI. However, differences in BMI indicators
167 depending on genotype in all samples were not statistically significant.

168 *LEPR* emerged as the most promising candidate gene, likely undergoing
169 natural selection, represented by three variants (*rs1137100*, *rs1137101*, and

170 *rs1805096*) that strongly distinguish East Asian populations from all other
171 populations described in the literature Table 3.

172 **Table 3. Frequency of alleles and genotypes of the *rs1137101* polymorphism of**
173 **the *LEPR* gene in the Yakut population and in the populations of the 1000**
174 **Genomes project**

Populations	Alleles (%)		Genotypes (%)			Chi-square	p
	A	G	AA	AG	GG		
Yakutia (this study)	20,5	79,5	5,3	30,5	64,2	-	-
Average frequency in the world	41,6	58,4	19,6	43,8	36,5	51,52	0,000
South and Middle America	56,3	43,7	29,7	53,3	17,0	107,39	0,000
Europe	53,1	46,9	30,2	45,7	24,1	97,92	0,000
South Asia	49,7	50,3	25,6	48,3	26,2	78,97	0,000
Africa	40,8	59,2	15,7	50,1	34,2	42,35	0,000
East Asia	13,1	86,9	1,6	23,0	75,4	9,6	0,002

175 Note: Chi-square – chi – square with Yates correction, p – significance of differences
176 in allele frequencies between populations and the allele frequency of this study.

177 The high frequency of the G allele in the Yakut population is close to that
178 observed in populations of East Asia (86.9%). In other populations of Europe,
179 Africa, America and South Asia, the G allele occurs with a frequency of 43.7% to
180 59.2% [13]. Interestingly, the frequency of the G allele in populations of South and
181 Middle America (43.7%) is similar to populations of Europeans (46.9%) and South
182 Asians (50.3%). These data do not fit into modern views that the Indian population
183 and the populations of East Asia (86.9%) have the same roots.

184 Discussion

185 Previously, several studies of *Q223R* and *K109R* polymorphisms in the Yakut
186 population were carried out, so Ammosova E.P. et al. investigated the relationship
187 between the *rs1137100* polymorphism of the *LEPR* gene and the lipid spectrum,
188 metabolic syndrome and its components in the Yakuts. They found that the
189 frequency of the G allele was 66.6%. No association with metabolic syndrome and
190 its components has been identified [5]. Asekritova A.S. et al. conducted a study of

191 *rs1137101* polymorphism in Yakuts, as a result, the frequency of the G allele in
192 patients with metabolic syndrome was 87% and in patients without metabolic
193 syndrome 91% [6]. Ievleva K.D. came to significant results, she found that the risk
194 markers for the implementation of disorders of carbohydrate and energy metabolism
195 against the background of overweight and obesity in Caucasian adolescents
196 (Russians) is the carriage of alleles of the polymorphic loci of the *LEPR* gene
197 *rs1137101* and *rs1137100*, in Mongoloid adolescents (Buryats) - carriage of the
198 *FTO rs9939609* and *FTO rs8050136* alleles [7]. A study in the Malaysian population
199 did not reveal an association between the *rs1137101* and *rs1137100* polymorphisms
200 and obesity [8]. Okada T. et al found an association between the A allele and the
201 incidence of childhood obesity and overweight in the Japanese population [9]. The
202 GENYAL study in Spain assessed 11 SNPs associated with high body mass index
203 in children and found a significant association between *Q223R LEPR* and high
204 weight gain [10].

205 In their work, the researchers observed a north-south gradient in *Q223R* allele
206 frequency in Europeans, with a higher frequency of derived alleles in the north and
207 a lower frequency in the south. The same phenomenon for SNPs of other genes was
208 reported in the Framingham Heart Study [11] and in a pan-European analysis [12].
209 In a study of residents of Sri Lanka, Illangasekera Y. A. et al. found a connection
210 between the G allele and BMI and waist circumference; they also found that living
211 in an urban area neutralized the protective effect of the non-risk genotype (AA) in
212 the development of obesity [13].

213 Our studies in the Yakut population show a high prevalence of variants of the
214 *PNPLA3* and *FABP2* genes associated with increased BMI and non-alcoholic fatty
215 liver disease [15]. In a study by Simcox J. et al, they found that the G allele of the
216 *PNPLA3* gene is associated with adaptation to cold [16]. The authors suggest that
217 the sharply continental climate and specific diet were probably the reason for the
218 high prevalence of variants of genes involved in the metabolism of lipids and
219 carbohydrates, and the accumulation of risk alleles is a consequence of adaptation
220 to living conditions in Yakutia.

221 *LEPR* is involved in fat storage and heat dissipation by mitochondria, as well
222 as body weight regulation. Polymorphisms in the *LEPR* gene that exhibit some
223 signatures of selection in East Asian populations have been reported to be involved
224 in specific metabolic patterns and/or disorders. For example, *rs1137100* is
225 responsible for a nonsynonymous substitution (*K109R*) that is found to be associated
226 with an increased respiratory quotient (i.e., increased basal metabolic rate),
227 consistent with its important effect on nonshivering thermogenesis.

228 There is some evidence of adaptation to cold in populations ancestral to
229 anatomically modern humans. Sazini et al. analyzed genes associated with the
230 function of brown adipose tissue, modifications of which contribute to increased
231 heat dissipation by mitochondria, in the genomes of modern populations of East Asia
232 and Europe, as well as in the genomes of fossil hominids (Neanderthals and
233 Denisovans), and found evidence of positive selection for three SNPs in the *LEPR*
234 gene in East Asians [17]. The G variant of the *LEPR* gene (*rs1137101*), showing
235 signs of positive selection, was found in the Neanderthal and Denisovan genomes,
236 suggesting the evolution of independent mechanisms of adaptation to thermal
237 efficiency in these fossil hominin populations. In fact, the variation surrounding
238 *LEPR rs1137100* appears to have actually been shaped by positive selection in East
239 Asian populations, whereas only the potentially cold-adapted *LEPR rs1137101* was
240 observed in archaic species. This suggests that convergent evolution of modern and
241 archaic increased thermogenesis mediated through brown adipose tissue or
242 introgression of related archaic cold-adapted alleles into modern genomes is unlikely
243 [18].

244 Long-term consumption of fructose has also been shown to lead to leptin
245 resistance. Recently, leptin was found to be associated with autophagy. Autophagy
246 has been demonstrated to be involved in several interesting processes, such as fat
247 storage in adipocytes and liver [19].

248 The mutant allele has also been reported to reduce leptin inhibition of insulin,
249 leading to insulin dysregulation and increased insulin release, thereby accelerating
250 glucose uptake and basal metabolic rate. Accordingly, this variant could potentially
251 be detrimental in hot climates, in which it did maintain a low frequency, becoming
252 increasingly beneficial in colder climates due to the associated increase in basal
253 metabolic rate and thus heat dissipation, which is the basis of non-shivering
254 thermogenesis. It appears that changes in the *LEPR* gene (*rs1137101* and
255 *rs1137100*) were an advantage for Asian populations 6000–8000 years ago, a time
256 that corresponds to the introduction of agriculture in Asia. It has been suggested that
257 the *LEPR* gene may be considered a "thrifty" gene, leading to the accumulation of
258 adipose tissue in times of plenty, providing a reserve in times of famine. As an
259 alternative explanation for the positive selection of *LEPR* in Asian populations,
260 Hancock et al found associations of several *LEPR* variants with climate variables,
261 suggesting a role for climate adaptation in the biological processes underlying cold
262 adaptation and overweight. They suggest that variants such as *Q223R* and *K109R*
263 may be harmful in hot equatorial climates and beneficial in colder climates [20].

264 **Conclusions**

265 The authors' study demonstrates that in the Yakut population, SNP *Q223R*
266 (*LEPR*) is possible and has some effect on anthropometric indicators, but differs
267 from studies conducted on samples of European ethnicity. It can be assumed that the
268 accumulation of the G allele of the *Q223R* (*LEPR*) polymorphism in the Yakut
269 population, as in East Asian populations, is probably a consequence of metabolic
270 adaptation to living conditions in a non-tropical climate.

271 Acknowledgment

272 The study was carried out within the framework of the Scientific - Research
273 Experimental - Design Work “Study of the genetic structure and burden of hereditary
274 pathology of populations of the Republic of Sakha (Yakutia)” using the Unique
275 scientific equipment (USE) “The Genome of Yakutia” (No. USU_507512).

276 References

- 277 1. Tiwari A., Balasundaram P. Public Health Considerations Regarding Obesity.
278 StatPearls. 2023; Available from: <https://pubmed.ncbi.nlm.nih.gov/34283488/>.
- 279 2. Bender N., Allemann N., Marek D., Vollenweider P., Waeber G., Mooser V.,
280 Egger M., Bochud M. Association between Variants of the Leptin Receptor
281 Gene (*LEPR*) and Overweight: A Systematic Review and an Analysis of the
282 CoLaus Study. PLoS One. 2011. 6. e26157. 10.1371/journal.pone.0026157.
- 283 3. Hastuti P., Zukhrufia I., Padwaswari M. H., Nuraini A., Sadewa A. H.
284 Polymorphism in leptin receptor gene was associated with obesity in
285 Yogyakarta, Indonesia. Egyptian Journal of Medical Human Genetics. 2016.
286 Vol. 17. Is. 3. P. 271-276. doi: [10.1016/j.ejmhg.2015.12.011](https://doi.org/10.1016/j.ejmhg.2015.12.011)
- 287 4. Yang Y, Niu T. A meta-analysis of associations of *LEPR* *Q223R* and *K109R*
288 polymorphisms with Type 2 diabetes risk. PLoS One. 2018. Vol. 13 Is. 1. P.
289 e0189366. doi: 10.1371/journal.pone.0189366.
- 290 5. Ammosova E.P., Klimova T.M., Zakharova R.N., Fedorov A.I., Baltakhinova
291 M.E. Polymorphic marker rs137100 of the *LEPR* gene and metabolic disorders
292 in the indigenous population of Yakutia. Yakut Medical Journal. 2021. 2(74).
293 P.5-9 doi 10.25789/YMJ.2021.74.01.
- 294 6. Asekritova A. S., Borisova E. P., Kylbanova E. S., Maksimova N. R. Genetic
295 aspects of metabolic syndrome in the Yakut ethnic group. Yakut Medical
296 Journal. 2014. 2 (46). pp. 32-35.
- 297 7. Ievleva K.D. Patterns of changes in energy metabolism and the mechanism of
298 its genetic determination in adolescents of two ethnic groups with excess body
299 weight. dis. Ph.D. honey. Sci. Irkutsk, 2022. 138 p.
- 300 8. Fan, S.H., Say Y.H. Leptin and leptin receptor gene polymorphisms and their
301 association with plasma leptin levels and obesity in a multi-ethnic Malaysian

- 302 suburban population. *J Physiol Anthropol.* 2014. Vol. 33. P.15 doi:
303 10.1186/1880-6805-33-15.
- 304 9. Okada T, Ohzeki T, Nakagawa Y, Sugihara S, Arisaka O, Study Group of
305 Pediatric Obesity and Its related Metabolism. Impact of leptin and leptin-
306 receptor gene polymorphisms on serum lipids in Japanese obese children. *Acta*
307 *Paediatr.* 2010. Vol. 99 Is. 8. P. 1213-7. doi: 10.1111/j.1651-2227.2010.01778.x.
- 308 10. Marcos-Pasero H, Aguilar-Aguilar E, Colmenarejo G, Ramírez de Molina A,
309 Reglero G, Loria-Kohen V. The Q223R Polymorphism of the Leptin Receptor
310 Gene as a Predictor of Weight Gain in Childhood Obesity and the Identification
311 of Possible Factors Involved. *Genes (Basel).* 2020. Vol. 11. Is. 5. P. 560. doi:
312 10.3390/genes11050560.
- 313 11. Sebro R, Hoffman T.J., Lange C., Rogus J.J., Risch N.J. Testing for non-random
314 mating: evidence for ancestry-related assortative mating in the Framingham
315 heart study. *Genet Epidemiol.* 2010. Vol. 34. Is. 7. P. 674-679. doi:
316 10.1002/gepi.20528.
- 317 12. Novembre J, Johnson T, Bryc K, Kutalik Z, Boyko A.R., Auton A, Indap A,
318 King K.S., Bergmann S, Nelson M.R., Stephens M, Bustamante C.D. Genes
319 mirror geography within Europe. *Nature.* 2008. Vol. 456 Is. 7218. P. 98-101. doi:
320 10.1038/nature07331.
- 321 13. Illangasekera, Y.A., Kumarasiri, P.V.R., Fernando, D.J. et al. Association of the
322 leptin receptor Q223R (rs1137101) polymorphism with obesity measures in Sri
323 Lankans. *BMC Res Notes.* 2020. Vol. 34 Is. 13. doi: 10.1186/s13104-020-4898-
324 4.
- 325 14. GSR and the 1000 Genomes Project. Available from:
326 <https://www.internationalgenome.org/>
- 327 15. Pavlova N.I., Krylov A.V., Alekseev V.A., Bochurov A.A. Association of the
328 Ala54Thr polymorphism of the FABP2 gene with obesity in the Yakut
329 population. *Modern problems of science and education.* 2023. No. 2.;
330 doi:10.17513/spno.32482.
- 331 16. Simcox J., Geoghegan G., Maschek J.A., Bensard C.L., Pasquali M., Miao R.,
332 Lee S., Jiang L., Huck I., Kershaw E.E., Donato A.J., Apte U., Longo N., Rutter
333 J., Schreiber R., Zechner R., Cox J., Villanueva C.J. Global Analysis of Plasma
334 Lipids Identifies Liver-Derived Acylcarnitines as a Fuel Source for Brown Fat
335 Thermogenesis. *Cell Metab.* 2017. Vol. 3 Is. 26. P. 509-522 doi:
336 10.7554/eLife.52558.
- 337 17. Sazzini M, Schiavo G, De Fanti S, Martelli PL, Casadio R, Luiselli D. Searching
338 for signatures of cold adaptations in modern and archaic humans: hints from the
339 brown adipose tissue genes. *Heredity (Edinb).* 2014. Vol. 113. Is. 3. P. 259-267.
340 doi: 10.1038/hdy.2014.24.
- 341 18. Silvert M, Quintana-Murci L, Rotival M. Impact and Evolutionary Determinants
342 of Neanderthal Introgression on Transcriptional and Post-Transcriptional
343 Regulation. *Am J Hum Genet.* 2019. Vol. 104. Is. 6. P. 1241-1250. doi:
344 10.1016/j.ajhg.2019.04.016.

- 345 19. Aijälä M, Malo E, Ukkola O, Bloigu R, Lehenkari P, Autio-Harminen H,
346 Santaniemi M, Kesäniemi YA. Long-term fructose feeding changes the
347 expression of leptin receptors and autophagy genes in the adipose tissue and liver
348 of male rats: a possible link to elevated triglycerides. *Genes Nutr.* 2013. Vol. 8.
349 Is. 6. P. 623-635. doi: 10.1007/s12263-013-0357-3.
- 350 20. Bender N, Allemann N, Marek D, Vollenweider P, Waeber G, Mooser V, Egger
351 M, Bochud M. Association between variants of the leptin receptor gene (LEPR)
352 and overweight: a systematic review and an analysis of the CoLaus study. *PLoS*
353 *One.* 2011. Vol. 6. Is. 10. P. e26157. doi: 10.1371/journal.pone.0026157.