

Socio-demographic and genetic risk factors for drug adherence and persistence: a retrospective nationwide and biobank study across 5 medication classes and 1 845 665 individuals

M. Cordioli^{1,#}, A. Corbetta^{1,2,3,#}, H.M. Kariis^{4,#}, S. Jukarainen¹, P. Vartiainen¹, T. Kiiskinen¹, M. Ferro¹, FinnGen, Estonian Biobank Research Team, M. Niemi^{5,6,7}, S. Ripatti^{1,8,9}, K. Lehto⁴, L. Milani⁴, A. Ganna^{1,10,11}

¹ Institute for Molecular Medicine Finland, University of Helsinki, Helsinki, Finland

² CHDS - Health Data Science Center, Human Technopole, Milan, Italy

³ MOX - Laboratory for Modeling and Scientific Computing, Department of Mathematics, Politecnico di Milano, Milan, Italy

⁴ Estonian Genome Centre, Institute of Genomics, University of Tartu, Tartu, Estonia

⁵ Department of Clinical Pharmacology, University of Helsinki, Helsinki, Finland

⁶ Individualized Drug Therapy Research Program, University of Helsinki, Helsinki, Finland

⁷ Department of Clinical Pharmacology, HUS Diagnostic Center, Helsinki University Hospital, Helsinki, Finland

⁸ Broad Institute of MIT and Harvard, Cambridge, MA, USA

⁹ Department of Public Health, University of Helsinki, Helsinki, Finland

¹⁰ Analytic and Translational Genetics Unit, Massachusetts General Hospital, Boston, MA, USA

¹¹ Program in Medical and Population Genetics, Broad Institute of MIT and Harvard, Cambridge, MA, USA

These authors contributed equally to this work

Correspondence to Andrea Ganna (andrea.ganna@helsinki.fi)

1 **Abstract**

2 Low drug adherence is a major obstacle to the benefits of pharmacotherapies and it is therefore
3 important to identify factors associated with discontinuing or being poorly adherent to a
4 prescribed treatment regimen. Using high-quality nationwide health registry data and genome-
5 wide genotyping, we evaluate the impact of socio-demographic and genetic risk factors on
6 adherence and persistence for 5 common medication classes that require long-term, regular
7 therapy (N = 1 814 591 individuals from Finnish nationwide registries, 217 005 with genetic data
8 from Finland and Estonia).

9 Need for social assistance and immigration status showed a notable negative effect on
10 persistence and adherence across the examined medications (odd ratios between 0.48 and
11 0.82 for persistence and between 1.1% to 4.3% decrease in adherence) while demographic and
12 health factors showed comparably modest or inconsistent effects. A genome-wide scan did not
13 identify genetic variants associated with the two phenotypes, while some pharmacogenes (i.e.
14 *CYP2C9* and *SLCO1B1*) were modestly associated with persistence, but not with adherence.

15 We observed significant genetic correlations between medication adherence and participation in
16 research studies. Overall, our findings suggest that socio-economically disadvantaged groups
17 would benefit from targeted interventions to improve the dispensing and uptake of
18 pharmacological treatments.

19 Introduction

20 Drug adherence is defined as the extent to which patients follow the prescribed therapeutic
21 regimen when taking medications ¹. High adherence is considered to be crucial for the
22 effectiveness of pharmacological treatments ², and improving adherence has been considered
23 one of the leading challenges for healthcare professionals ³. A better understanding of the risk
24 factors driving adherence is fundamental to helping clinicians improve their clinical practice and
25 identify patients who are at risk of poor adherence at an earlier stage.

26
27 While there are multiple dimensions of adherence, some related to the healthcare system and
28 the mode of therapy delivery ^{4,5}, studies have shown that individuals with low adherence in
29 placebo arms of randomized controlled trials have higher mortality⁶. This suggests that
30 adherence to pharmacotherapy may be a surrogate marker for overall health behavior ("healthy
31 adherer" effect) and that risk factors for adherence might be shared across different drugs.

32
33 Accurately estimating patients drug usage and adherence is not a trivial task. Traditionally
34 questionnaires have been used, but with the increasing availability of electronic health records,
35 studies have started investigating determinants of drug adherence and persistence using
36 pharmacy administrative databases or insurance claims data ⁷⁻¹¹. However, most studies focus
37 on a single medication or condition and consider adherence over a limited follow-up available
38 due to data limitations. Few studies have investigated determinants of adherence across
39 different medications ^{12,13}, but have only considered a limited number of demographic and
40 socioeconomic risk factors.

41
42 Beyond socio-demographic factors, genetics might play a role in drug adherence.
43 Pharmacogenomic studies have identified several genetic variants relevant to drug response
44 that can increase an individual's risk for adverse drug reactions ¹⁴ and a recent randomized trial
45 suggested that pre-emptive testing with a 12-gene pharmacogenetic panel can significantly
46 reduce the incidence of clinically relevant adverse drug reactions ¹⁵. Because an adverse drug
47 reaction decreases the likelihood of a patient continuing to take a medication, genetics might
48 impact adherence via this mechanism. Nonetheless, the impact of clinically relevant
49 pharmacogenetic variants on drug adherence has not yet been studied in large biobank-based
50 studies and considering multiple medications. Moreover, identifying novel genetic variants
51 associated with adherence might help to discover new aspects of drug response. An alternative,

52 but not mutually exclusive hypothesis, is that genetics might capture underlying health and
53 behavioral aspects that are associated with adherence. In this scenario, polygenic scores (PGS)
54 for certain diseases or behavioral traits might help predict drug adherence.

55
56 Here, we conducted a comprehensive and systematic investigation of adherence and
57 persistence to drug treatments across multiple patient-related dimensions encompassing
58 demographic, socioeconomic, and genetic factors. We used high-quality nationwide electronic
59 health record data on prescription medication purchases made at pharmacies to accurately
60 estimate two established drug-taking phenotypes^{16–19} (**Methods**): (a) *persistence*, defined as
61 purchasing medications for at least one year versus early discontinuation of the medication (i.e.
62 after one purchase) and (b) *adherence*, measured as Medication Possession Ratio (MPR),
63 which is the “proportion (or percentage) of days supply obtained during a specified time period”
64 (**Figure 1, Methods**). We considered five commonly prescribed medications that are typically
65 used for long-term, continuous, regular therapy.

66
67 We first explored the role of multiple health, demographics, and socioeconomic factors in
68 FinRegistry²⁰, a nationwide cohort study. Next, we considered the role of genetics in a subset of
69 the Finnish population from the FinnGen study²¹ and the Estonian Biobank²², where genome-
70 wide genotype information is available. We focused on well-known pharmacogenes as well as
71 on genome-wide effects. We performed a genome-wide association study (GWAS) to identify
72 potential novel genetic associations with adherence and persistence and we evaluated if these
73 results can be used for risk stratification. Finally, we used genetic correlations analysis to
74 examine the overlap between persistence and adherence and other diseases or behavioral
75 traits, and whether PGSs capturing these traits can be used to predict the two drug-taking
76 phenotypes of interest

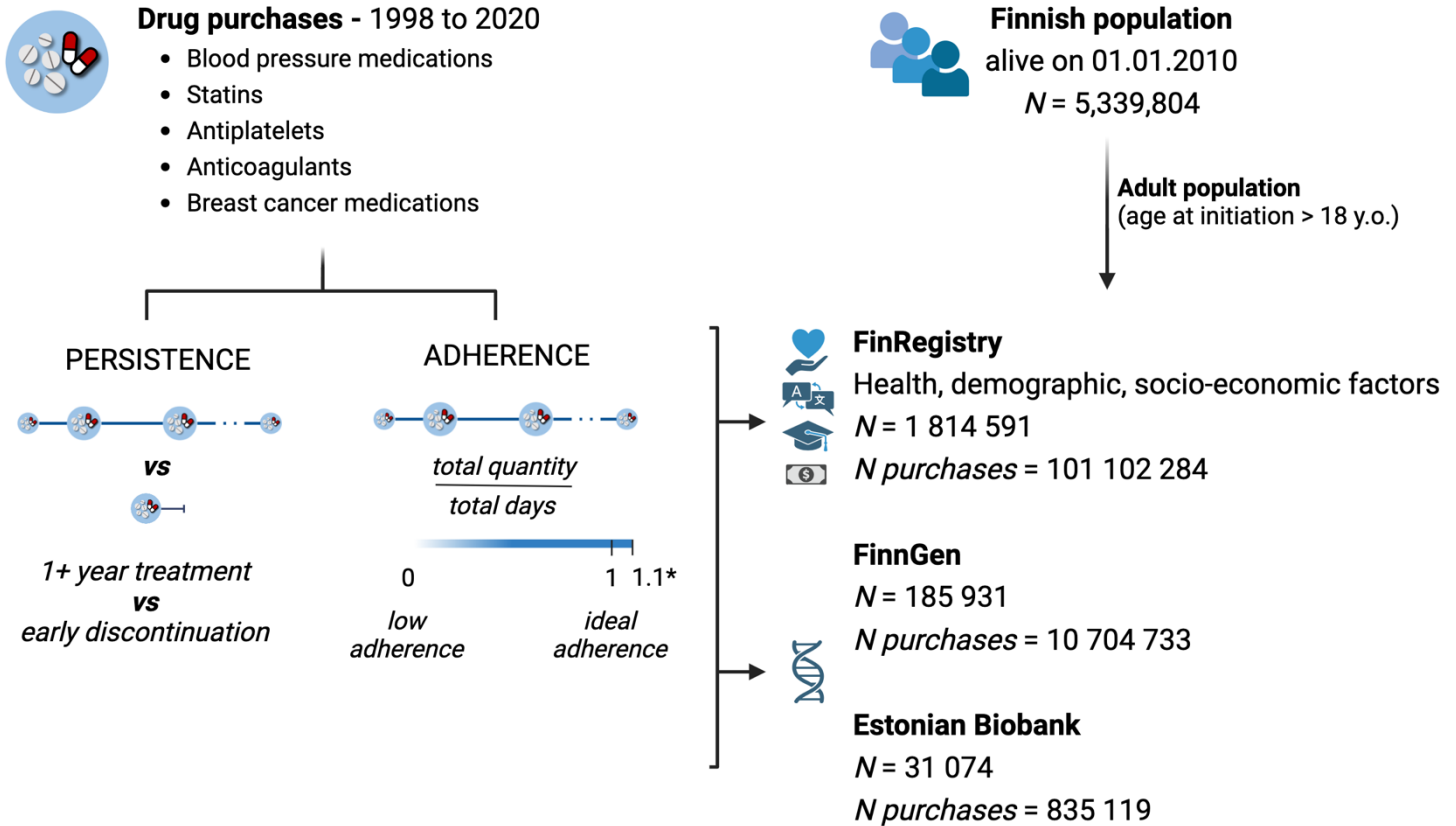


Figure 1 | Schematic overview of the study. We included all individuals resident in Finland and alive on 1.1.2010 (N=5 339 804) and used information from the Finnish drug purchase register to identify individual with at least one purchase for the following medication classes: blood pressure medications, statins, antiplatelets, direct oral anticoagulants and breast cancer medications. We considered only the adult population, starting the treatment after age 18, and reconstructed individual medication purchase trajectories as a proxy to define the medication usage phenotypes: persistence and adherence. Persistence was defined as continuing the treatment for at least one year versus discontinuing it after the first purchase. We defined adherence as the Medication Possession Ratio (ratio of the quantity purchased in the observation period to the days in the observation period), for patients continuing the treatment for at least one year. Adherence is a continuous trait ranging from 0 (complete lack of adherence) to 1 (ideal adherence). *We excluded patients with adherence above 1.1, to exclude excessive stockpiling or overbuying behaviors, but still allowing for some variability. We then studied the association of these two medication-use phenotypes with health, demographic and socio-economic factors from nationwide registries (N = 1 814 591 with complete information) and with genetic information for a subset of the population from the FinnGen study (N = 185 931) and from Estonian Biobank (N = 31 074). Figure created with Biorender.com.

80 Results

81 Adherence and persistence for 5 medications in 1 814 591 individuals in the general 82 population and 217 005 individuals with genetic data

83 We considered five classes of medications: statins, blood pressure (BP) medications,
84 antiplatelets, breast cancer medications, and direct oral anticoagulants (DOAC) (ATC codes
85 included are described in **Table 1** and **Methods**). For breast cancer medications and DOACs,
86 we included individuals with, respectively, a breast cancer or atrial fibrillation, pulmonary
87 embolism, or venous thromboembolism diagnosis before treatment initiation (**Methods**). For
88 antiplatelets, we did not analyze persistence, as this class of medications is frequently
89 prescribed for temporary treatments of 6 to 12 months. Information about the date, quantity, and
90 type of reimbursable medications that were purchased in pharmacies were available between
91 1998 and 2020 and were used to calculate adherence and persistence.

92
93 Our initial study population included every individual who was a resident in Finland on 1/1/2010
94 (N=5 339 804). 2 289 455 individuals (43% of the whole population) purchased at least one of
95 the 5 medications after 18 years of age, with a total of 162 231 752 purchases.

96 Most individuals purchased the 5 medications for at least 12 months (ranging from 89.7% for
97 breast cancer medications to 64.7% for anticoagulants, except for antiplatelets (44.2%),
98 **Supplementary Table 1**) and were eligible for the adherence analysis (N = 1 876 212). We
99 further excluded 141 452 individuals who had a medication possession ratio (MPR) > 1.1, to
100 account for stockpiling of medications or overbuying behaviors (**Methods**), and 1 270
101 individuals with incomplete registry information for the 8 health and socioeconomic factors
102 considered in the main analysis (**Supplementary Table 1**). In the persistence analysis, we
103 considered people discontinuing the treatment after one purchase and compared them to those
104 continuing for at least 12 months and were eligible for the adherence analysis. Our final study
105 population thus included 1 814 591 individuals, for a total of 101 102 284 purchases.

106
107 BP medications were the most purchased (N of individuals = 1 316 889) and had a mean
108 treatment length of over 10 years (**Table 1**). Breast cancer medications were purchased by the
109 fewest individuals (N=55 270) and most individuals stopped after 5 years.

110 Persistence was above 90% for all drugs (**Figure 2**). Adherence was 0.94 averaging across all
111 medications, highest in breast cancer medications (0.97) and lowest in statins (0.89; **Table 1**).

112 Adherence values were similar to those reported in the literature in comparable studies or meta-

113 analyses ^{12,23} with all medication classes having at least 80% of individuals considered as “good
114 adherers” (**Figure 2**). **Extended Figure 1** provides an overview of adherence values by
115 showing the relationship between expected and observed consumption across the 5 medication
116 classes.

117

118 For the subset of 185 931 individuals participating in FinnGen, persistence rates and adherence
119 distributions were consistent with the general population. In the Estonian Biobank, a cohort with
120 similar drug purchase data and genetic information available and 31 074 eligible medication
121 users, we observed generally lower persistence and adherence to statins, clopidogrel, and
122 tamoxifen (**Table 1**).

123

124

125

126

127

128

129

130

131

132

133

134

135

136

137

138

139

140

141

142

143

144

| Medication class | ATC codes | Cohort | N individuals | Total purchases | Proportion of persistent individuals | Mean adherence (SD) | Mean treatment length (years) |
|----------------------------|---|------------------|---------------|-----------------|--------------------------------------|---------------------|-------------------------------|
| Blood Pressure medications | C02*, C03*, C08*, C09* | FinRegistry | 1 316 889 | 61 213 707 | 0.947 | 0.93 (0.123) | 10.755 |
| | | FinnGen | 134 615 | 6 399 494 | 0.937 | 0.932 (0.121) | 11.172 |
| Statins | C10AA* | FinRegistry | 1 061 926 | 33 864 971 | 0.952 | 0.892 (0.123) | 9.168 |
| | | FinnGen | 116 439 | 3 828 359 | 0.956 | 0.901 (0.118) | 9.454 |
| | | Estonian Biobank | 27 339 | 792 839 | 0.866 | 0.648 (0.275) | 8.815 |
| Antiplatelets | B01AC04 B01AC30 | FinRegistry | 138 007 | 3 120 237 | - | 0.931 (0.114) | 5.528 |
| | | FinnGen | 12 618 | 285 902 | - | 0.933 (0.112) | 5.572 |
| Clopidogrel | B01AC04 | Estonian Biobank | 2712 | 33 466 | - | 0.663 (0.325) | 5.455 |
| Anticoagulants | B01AF01, B01AF02, B01AF03, B01AF07 | FinRegistry | 105 113 | 2 003 698 | 0.975 | 0.957 (0.094) | 3.127 |
| | | FinnGen | 2792 | 45 394 | 0.889 | 0.952 (0.101) | 2.984 |
| Breast Cancer medications | L02BA01, L02BG04, L02BG06, L02BG03 | FinRegistry | 55 270 | 899 671 | 0.984 | 0.969 (0.067) | 4.556 |
| | | FinnGen | 9857 | 145 584 | 0.985 | 0.971 (0.067) | 4.128 |
| Tamoxifen | L02BA01 | Estonian Biobank | 1023 | 8814 | 0.58 | 0.829 (0.267) | 3.973 |

Table 1 | Descriptive statistics for the 5 medication classes included in the analysis. For each medication class, we report the ATC codes used to define the medication purchases of interest and other descriptive statistics in the general Finnish population (FinRegistry), in the subset of Finnish population with genetic data (FinnGen) and in the Estonian Biobank. Number of individuals is the total number of individuals included in the analysis, meaning the number of individuals considered for both the persistence and adherence analysis. Total purchases is the total number of purchases per each medication and each cohort considered in both analyses. Mean adherence (and its standard deviation) and the mean treatment length are reported for the individuals with at least one year long treatment (individuals considered in the adherence analysis).

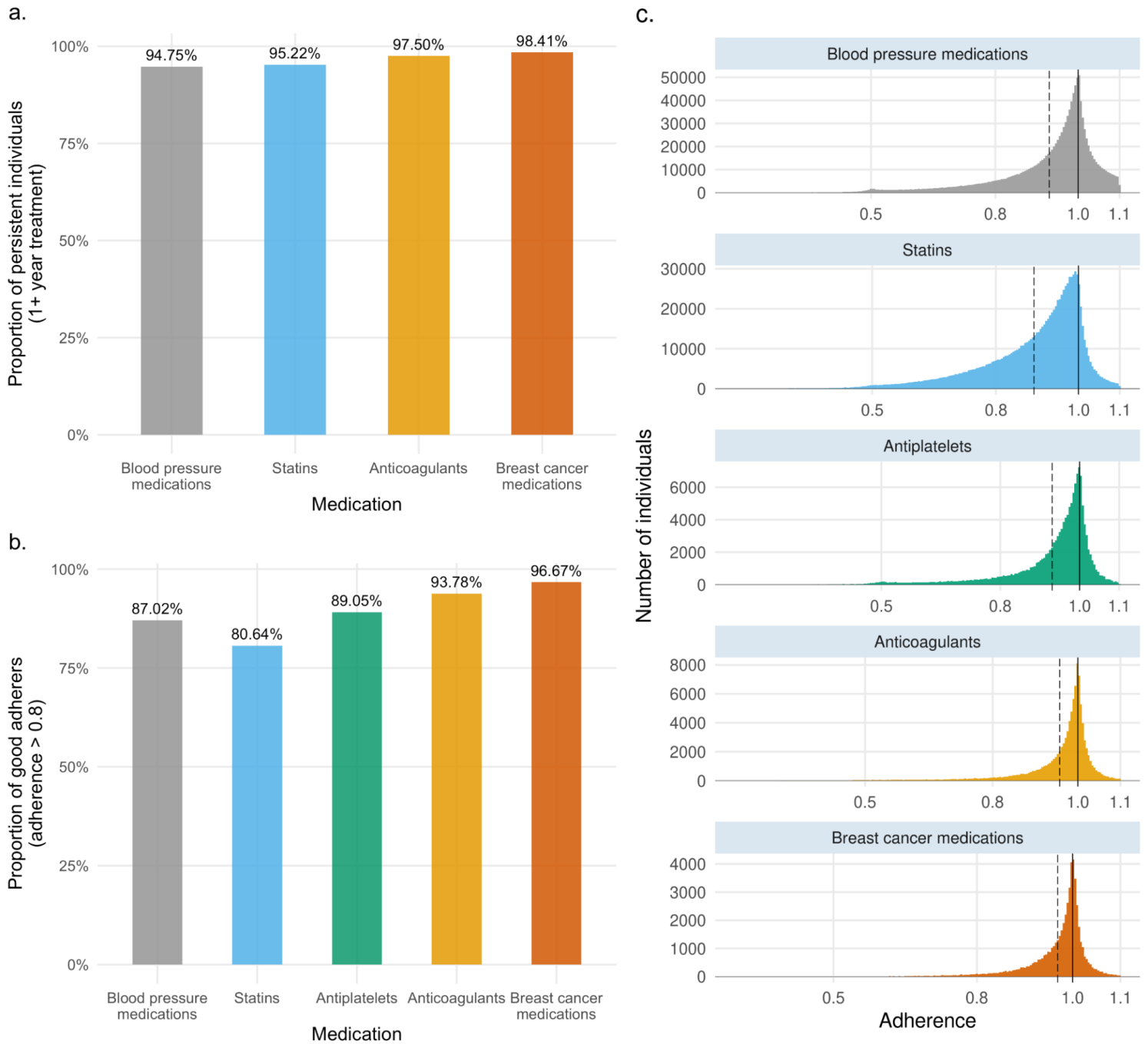


Figure 2 | Persistence and adherence to 5 medications in the general Finnish population. a., Proportion of persistent individuals for each medication class considered in the analysis. **b.,** Proportion of “good adherers” (individuals with adherence greater than 0.8) for each medication class. **c.,** Adherence distribution and mean adherence (dotted line) for the 5 medication classes considered in the analysis.

148 **Health and socio-demographic risk factors for persistence and adherence**

149 We studied the effects of the following risk factors, measured at the time of first purchase, on
150 persistence and adherence: age, sex, primary vs secondary prevention, Charlson comorbidity
151 index, years spent in education, living area, mother tongue (a proxy for first-generation
152 immigration status), and receiving any social assistance benefit in the year before starting the
153 treatment. We chose these 8 factors because they broadly capture overall health and socio-
154 demographic aspects, were previously examined in the literature ⁴, and were available from
155 nationwide registers. Basic descriptive statistics for each factor and each medication are
156 reported in **Supplementary Table 3**. Some socio-demographic factors were consistently
157 associated with lower persistence and adherence across all medications in a multivariable
158 analysis (**Figure 3** considers dichotomized factors while **Supplementary Tables 6 and 7** report
159 similar analysis when continuous factors are treated as such). For example, not speaking
160 Finnish or Swedish and having received social assistance benefits were associated with an
161 average of 3.2% [1.9%-4.3%] and 2% [1.1%-3.1%] lower adherence across medications,
162 respectively. Starting treatment after a related disease event (secondary prevention) was also
163 consistently associated with higher odds of persistence for statins (odds ratio (OR) = 1.53, 95%
164 confidence interval (CI) = 1.49-1.58, $P = 4.9 \times 10^{-198}$) and increased adherence to statins and
165 antiplatelets (1.7% increase, 95% CI = 1.64-1.76% $P < 2 \times 10^{-308}$ for statins; 0.47% increase, 95%
166 CI = 0.35-0.59%, $P = 7.4 \times 10^{-15}$ for antiplatelets). Age and sex showed discordant effects across
167 different medications after adjustment for the remaining factors. Being female showed a
168 consistent negative effect on persistence for all drugs but showed heterogeneous effects on
169 adherence. Age also showed heterogeneous effects across different medications
170 (**Supplementary Tables 4-7**).

171
172 Extending beyond these baseline factors, we further assessed the effect of one or more
173 concurrent treatments (i.e. polytherapy). We observed a consistent positive association between
174 having at least one or more treatment and higher adherence and increased odds of persistence
175 (**Supplementary Note**).

176
177 Overall, the considered health and socio-demographic factors showed a higher effect on
178 persistence than on adherence as indicated by the overall higher variance explained
179 (**Supplementary Table 8**).

180

181 In the Estonian Biobank, when examining variables that are present in both studies, we found
 182 consistent results in the direction of effect and statistical significance for both persistence and
 183 adherence to statins and age, sex, and years spent in education, but not for secondary
 184 prevention (**Supplementary Table 9**).

185

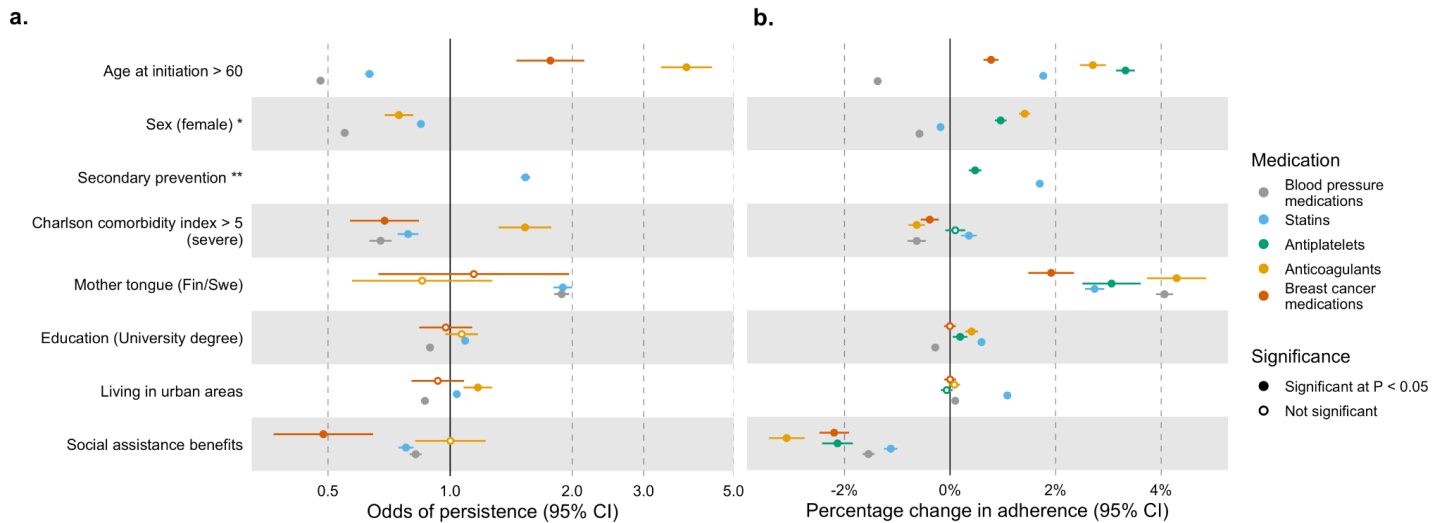


Figure 3 | Effect of 8 health, demographic and socioeconomic factors on persistence and adherence in the Finnish population. **a.**, Odds of persistence given each factor presence. ORs are from a multivariable logistic regression model, error bars represent the 95% confidence interval for the estimates. **b.**, Coefficients are estimated from a multivariable linear regression model and were rescaled to represent the percentage change in adherence given each factor presence. Error bars represent the 95% confidence interval for the estimate. Descriptive statistics for each risk factor are reported in Supplementary Table 2. In this figure we binarized the continuous risk factors to make effect sizes comparable, however results for non-binarized risk factors are available in Supplementary Table 5-6.

*sex not included for breast cancer medications as all individuals included are females

secondary prevention defined only for statins and antiplatelets (Methods**)

186

187 Established pharmacogenes marginally associate with persistence but not adherence

188 We tested the effects of 5 relevant pharmacogenes on persistence and adherence, in both
 189 FinnGen and the Estonian Biobank. We selected the following pharmacogenes based on
 190 guidelines from the Clinical Pharmacogenetics Implementation Consortium²⁴⁻²⁷, filtering for the
 191 drug/gene pairs which were reported with recommended prescribing actions (e.g. alternative
 192 therapies or dosing): *ABCG2* for rosuvastatin, *CYP2C9* for fluvastatin, *SLCO1B1* for all statins,
 193 *CYP2C19* for clopidogrel, and *CYP2D6* for tamoxifen. For each gene, we defined individual
 194 diplotypes and grouped them into phenotypes defined based on each diplotype activity score.

195 We then examined the effect of each phenotype on persistence and adherence. The *CYP2C9*

196 intermediate metabolizer phenotype was nominally significantly associated with lower odds of
 197 persistence to fluvastatin in both FinnGen and the Estonian Biobank, and when meta-analyzing
 198 the results from both studies (OR_{meta-analysis} = 0.6, 95% CI_{meta-analysis} = 0.43-0.84, P_{meta-analysis} =
 199 0.003). Similarly, *SLCO1B1* decreased and poor function were associated with lower odds of
 200 persistence to all statins (OR_{meta-analysis} = 0.92, 95% CI_{meta-analysis} = 0.86-0.98, P_{meta-analysis} =
 201 0.009; OR_{meta-analysis} = 0.94, 95% CI_{meta-analysis} = 0.88-0.99, P_{meta-analysis} = 0.04, respectively).
 202 Decreased *SLCO1B1* function was also significantly associated with lower adherence, although
 203 with a neglectable effect (-0.27% change in adherence, P = 0.033). None of the associations
 204 were significant after multiple testing correction (P < 0.002, Bonferroni correction for 19
 205 phenotypes tested).

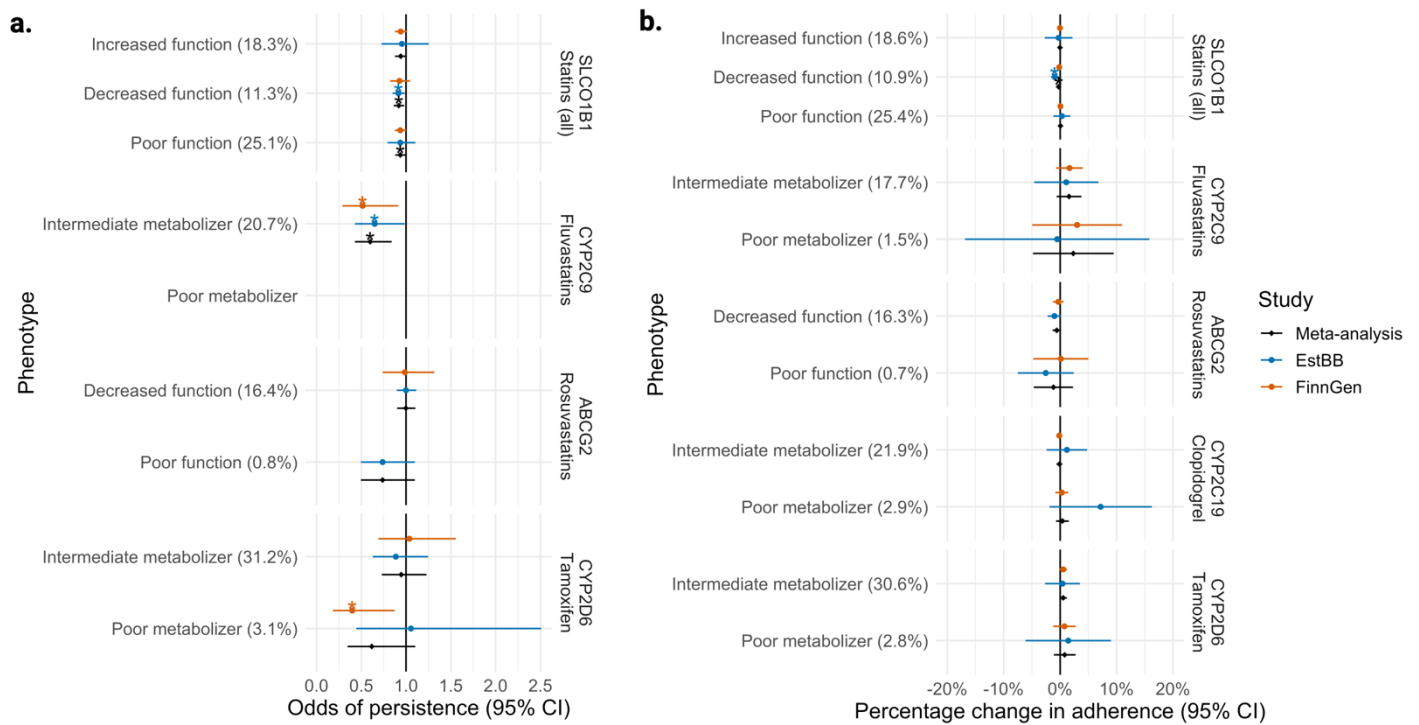


Figure 4 | Forest plot for associations between clinically relevant pharmacogene phenotypes and persistence and adherence in FinnGen and the Estonian Biobank. **a.** Odds of persistence given each phenotype level. ORs are estimated from a logistic regression model, separately for each gene/drug pair. **b.** Percentage change in adherence given each phenotype level. Coefficients are estimated from a linear regression model, separately for each gene/drug pair. For both panels, error bars represent the 95% confidence interval for the estimate. Stars represent nominal (P < 0.05) statistical significance. Estimates are not reported for phenotypes with N < 5. For each phenotype, the frequency within each drug user group is reported in parenthesis.

206 **Genome-wide association study of drug adherence and persistence**

207 We conducted a GWAS of persistence and adherence to each medication in FinnGen, adjusting
208 for age at initiation, year of birth, sex, genotyping batch, and first 10 genetic principal
209 components (**Extended Figure 2**). No variant showed significant association with either
210 phenotype at a significance level of $P < 1 \times 10^{-8}$ (standard genome-wide significance corrected for
211 multiple testing across the 5 medications). Four SNPs, however, were genome-wide significant
212 at the standard $P < 5 \times 10^{-8}$ threshold (**Supplementary Table 12**). Notably, *rs1339882991* was
213 positively correlated with both persistence and adherence to BP medications and was
214 previously reported to be positively associated with hypertension²⁸. Further characterization of
215 this and the other genome-wide significant variants is provided in the **Supplementary Note**.
216 Considering the sample size observed for statins (N = 116 439), we have at least 80% power to
217 identify genome-wide significant variants with an effect of greater than 2.7% on adherence,
218 assuming a minor allele frequency of 0.3. Such an effect is in line with what is observed for the
219 strongest epidemiological risk factor for statin adherence (**Figure 3**). As we expect individual
220 genetic effects for common variants to be smaller than socio-environmental, our results indicate
221 that at the current sample size, the power to identify genetic associations for adherence and
222 persistence is limited.

223 **Polygenic overlap between persistence, adherence and other health and behavioral traits**

224 We explored the genetic overlap between persistence and adherence and 33 major diseases,
225 disease risk factors, and behavioral traits (**Figure 5, Supplementary Tables 13,14**). Higher
226 systolic blood pressure was genetically correlated with higher persistence to BP medications (rg
227 = 0.77, $P = 3.1 \times 10^{-23}$) and with higher adherence to both statins and BP medications ($rg = 0.17$,
228 $P = 3.4 \times 10^{-06}$ and $rg = 0.4$, $P = 3.5 \times 10^{-30}$, respectively). On the contrary, higher LDL cholesterol
229 was genetically correlated with lower statins adherence ($rg = -0.14$, $P = 0.006$), although when
230 considering a GWAS of LDL cholesterol adjusted by statins usage the effect was not statistically
231 significant anymore. Notably, both adherence to statins and BP medications were positively
232 genetically correlated with participating in one or more of the optional components of UK
233 Biobank³⁰ (rg between 0.11 and 0.31, $P < 8.2 \times 10^{-3}$), indicating some shared effect between
234 drug adherence and continued participation in scientific studies.

235

236 We wondered if existing polygenic scores (PGS) could be used to predict adherence and
237 persistence and how their effect compared to that of the health and socio-demographic risk

238 factors examined before. Among the 33 PGS examined (**Extended Figure 3,4** and
239 **Supplementary Table 15,16**) the strongest effects were observed for systolic blood pressure
240 (SBP) PGS on BP medications persistence (OR = 1.64 for 1 standard deviation (SD) in PGS,
241 95% CI = 1.60-1.68, $P < 2 \times 10^{-308}$) and adherence (0.8% increase per 1-SD change in PGS,
242 95% CI = 0.74-0.86%, $P = 2.6 \times 10^{-126}$); LDL cholesterol (adjusted for statins usage) PGS on
243 statins persistence (OR = 1.24, 95% CI = 1.20-1.28, $P = 6.2 \times 10^{-47}$) and SBP PGS on statins
244 adherence (0.28% increase, 95% CI = 0.22-0.34%, $P = 2 \times 10^{-16}$); coronary artery disease PGS
245 on antiplatelets adherence (0.47% increase, 95% CI = 0.29-0.67%, $P = 4.3 \times 10^{-7}$) and PGS for
246 schizophrenia and adherence to breast cancer medications (0.22% decrease, 95% CI = 0.1%-
247 0.34%, $P = 4.2 \times 10^{-4}$). No significant association was observed between any of the PGS and
248 adherence or persistence to DOAC.

249
250 In the Estonian Biobank, systolic blood pressure and LDL PGS were also among the strongest
251 effects associated with increased statin adherence, and persistence, respectively (percentage
252 increase in adherence = 0.66%, $P = 1.11 \times 10^{-3}$); (OR = 1.13, 95%CI=1.093- 1.167, $P = 4.65 \times$
253 10^{-9}) (**Supplementary Tables 19-20**).

254
255 Overall, these PGSs could explain a lower fraction of the variance in adherence than the
256 combined effect of the health and socio-demographic risk factors examined above, after
257 accounting for age and sex (**Supplementary Table 17**).

258
259 Finally, we wondered whether developing a PGS for adherence would hold clinically meaningful
260 predictive power. We used the GWAS results from FinnGen to build a PGS for statin adherence
261 and tested its association with observed adherence in the Estonian Biobank. We found the PGS
262 to be significantly associated with observed adherence (percentage change in adherence for 1
263 SD change in PGS = 0.72%, $P = 1 \times 10^{-5}$), however, the small effect size observed suggests
264 such PGS to have low predictive value and clinical relevance.

265

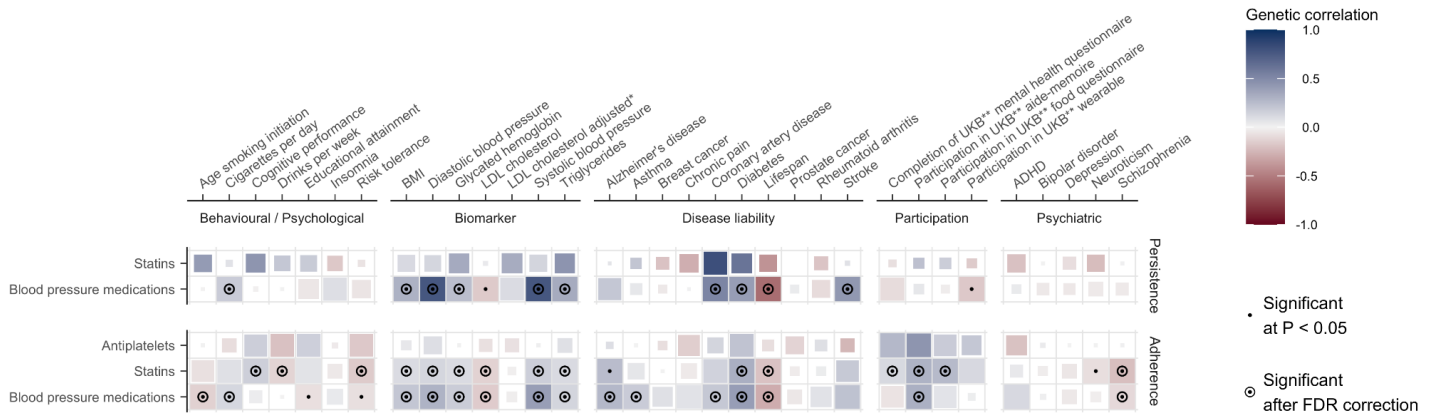


Figure 5 | Genetic correlates of persistence and adherence. Genetic correlations between 33 clinically relevant traits and persistence and adherence. Medications for which genetic correlations could not be computed are not displayed. Blue represents positive correlations, red negative. The size of each tile is proportional to the statistical significance (the bigger the tile, the lower the P-value). Correlations nominally significant at $P < 0.05$ are marked with a dot, while correlations which were significant after FDR correction (within each medication) are additionally marked with a circle.
 * adjusted by the use of cholesterol lowering medication
 ** UKB = UK Biobank

266 **Sensitivity analysis on persistence definition**

267 Our definition of persistence resulted in higher proportions of persistent individuals compared to
 268 what observed in literature³¹. Thus, as sensitivity analysis, we consider a different definition of
 269 persistence, looking at the proportion of individuals that stop medication within one year among
 270 those with at least one purchase of the medication. This definition includes a broader population
 271 (i.e. does not exclude overbuying behaviors) and consider as not persistence those individuals
 272 that stop after two and three purchases, as opposed to only one. With this definition,
 273 persistence for statins was 75.6%, consistent with the literature³¹. When looking at the effect of
 274 PGS on persistence, we observed directionally consistent effects, but an overall reduction in
 275 effect sizes despite the increased number of statistically significant associations
 276 **(Supplementary Table 18, Supplementary Figure 1).**

277
 278
 279

280 **Discussion**

281
282 Drug adherence remains a major obstacle to the benefits of pharmacotherapies. Although many
283 external factors (e.g. healthcare- and system-related factors) contribute to drug adherence ^{4,5},
284 focusing on the patient-specific determinants might help in identifying patients at risk of low
285 adherence. In this study we provide a comprehensive exploration of patient-specific factors
286 affecting drug persistence and adherence across 5 different classes of medications, using
287 nationwide high quality registry data and, for the first time, also exploring genetic factors.

288
289 Overall, our results suggest that the need for social assistance and being first-generation
290 immigrants have a moderate to large effect on drug adherence and persistence which is
291 consistent across medication classes. In comparison, demographic characteristics (age and
292 sex), comorbidity burden, and genetic factors have modest or heterogeneous effects. The only
293 health factor with a robust effect was the presence of a disease related to the medication, which
294 substantially increased adherence among those using drugs for secondary prevention.
295 In line with previous reports ²³, the effects of age and sex were heterogeneous across different
296 medications. Nevertheless, females had consistently lower odds of persistence across all
297 medications. We speculate that a higher rate of adverse drug reactions in women compared to
298 men ^{32,33}, or lower perceived risk for cardiometabolic diseases among women can explain these
299 findings.

300
301 We performed three main genetic analyses. First, we evaluated if established pharmacogenes
302 for statins, clopidogrel and tamoxifen were associated with persistence and adherence of these
303 drugs. Our results indicate that poorer statins metabolism is associated with lower odds of
304 persistence, with a notable effect for *CYP2C9* and fluvastatins. Since increased systemic
305 concentration of statins is associated with higher risk of developing statin-associated muscle
306 symptoms²⁵, these findings are in line with the hypothesis of patients discontinuing the
307 treatment as they develop muscle symptoms. However, as these results were consistent in both
308 FinnGen and the Estonia Biobank, but were not significant after multiple-testing correction,
309 larger studies should specifically test this hypothesis. Because pharmacogenomics testing is not
310 widespread in Finland, we do not believe these results are biased by genetically-informed drug
311 prescription. Overall, the lack of association between most pharmacogenes and adherence
312 suggests that widespread pharmacogenetic testing before prescribing the medications included
313 in this study is not going to substantially improve adherence in the population, while it could be

314 valuable to tailor the prescribing dose of statins to avoid the risk of developing statin-associated
315 muscle symptoms and improve persistence.

316

317 Second, we performed a GWAS of drug adherence and persistence and used these results to
318 understand the overlap with other traits. We did not identify robust individual genetic signals but
319 the identification of four genome-wide significant variants, two of which were not previously
320 reported to be associated with traits underlying the need for medication, warrants for larger
321 genetic studies of adherence and persistence. Our power calculations indicate that even if this
322 is the largest study of this kind, power is still limited to identify genome-wide significant
323 associations of small effects. For example, at the current sample size, the variants in the
324 pharmacogenes tested, which showed marginal significance in the targeted analysis, would not
325 have been detected at a stringent genome-wide threshold.

326 A previous study using FinnGen data compared cardiometabolic-related medication user vs
327 non-user or changes in medication use and identified > 40 loci reflecting underlying
328 cardiometabolic risk³⁴. The differences in the magnitude of genetic signals and genetic
329 correlation profiles in the current study compared to our previous study indicate that drug
330 adherence and persistence have lower genetic contribution and a stronger behavioral
331 component, which does not necessarily reflect the underlying disease risk. In our study,
332 interestingly, we observed genome-wide overlaps with a proxy for study participation indicating
333 some shared effect between adherence to drug therapy and participation in scientific research,
334 similarly to what we recently observed for COVID-19 vaccination uptake³⁵.

335

336 Third, we explored if existing PGS could predict adherence and persistence and found the
337 strongest association between systolic blood pressure PGS and adherence/persistence to BP
338 medications. This association probably reflects individuals with higher BP being more adherent
339 due to higher perceived risk³⁶. Finally, while our results could be used to generate a PGS for
340 statin adherence, which significantly replicated in the Estonian Biobank, the variance explained
341 by this PGS was low.

342

343 A strength of this study is the use of Finnish registries covering all drug purchases since 1998
344 which allows an in-depth longitudinal study of drug purchasing. For example, the average
345 treatment length for BP medications was over 10 years. Moreover, by using nationwide data, we
346 could confirm that adherence and persistence measures in FinnGen were similar to what was
347 observed in the general population. Importantly, this study considers both socio-economic and

348 genetic risk factors, helping to better contextualize the results and bridging the divide between
349 social science and human genetics, as advocated by others³⁷. Furthermore, we derived
350 adherence and persistence measures from 5 different medication classes, which allowed us to
351 capture adherence-related factors beyond single disease- and drug-related factors. Finally, both
352 epidemiological and genetic results were replicated in an external study.

353

354 A limitation of the study is that our definitions of persistence and adherence can be biased in
355 different ways. First, our persistence definition resulted in higher proportions of persistent
356 individuals compared to what observed in literature³¹. Nonetheless, we chose this definition to
357 better capture early discontinuation behaviors (i.e. after the first purchase). Moreover, we
358 deemed it fair to compare these individuals only to those included in the adherence analysis, so
359 as not to include overbuying behaviors. Sensitivity analyses suggest that our results are robust
360 to a different definition of persistence and that our stricter inclusion criteria resulted in larger
361 effect sizes at the expenses of decreased statistical power.

362

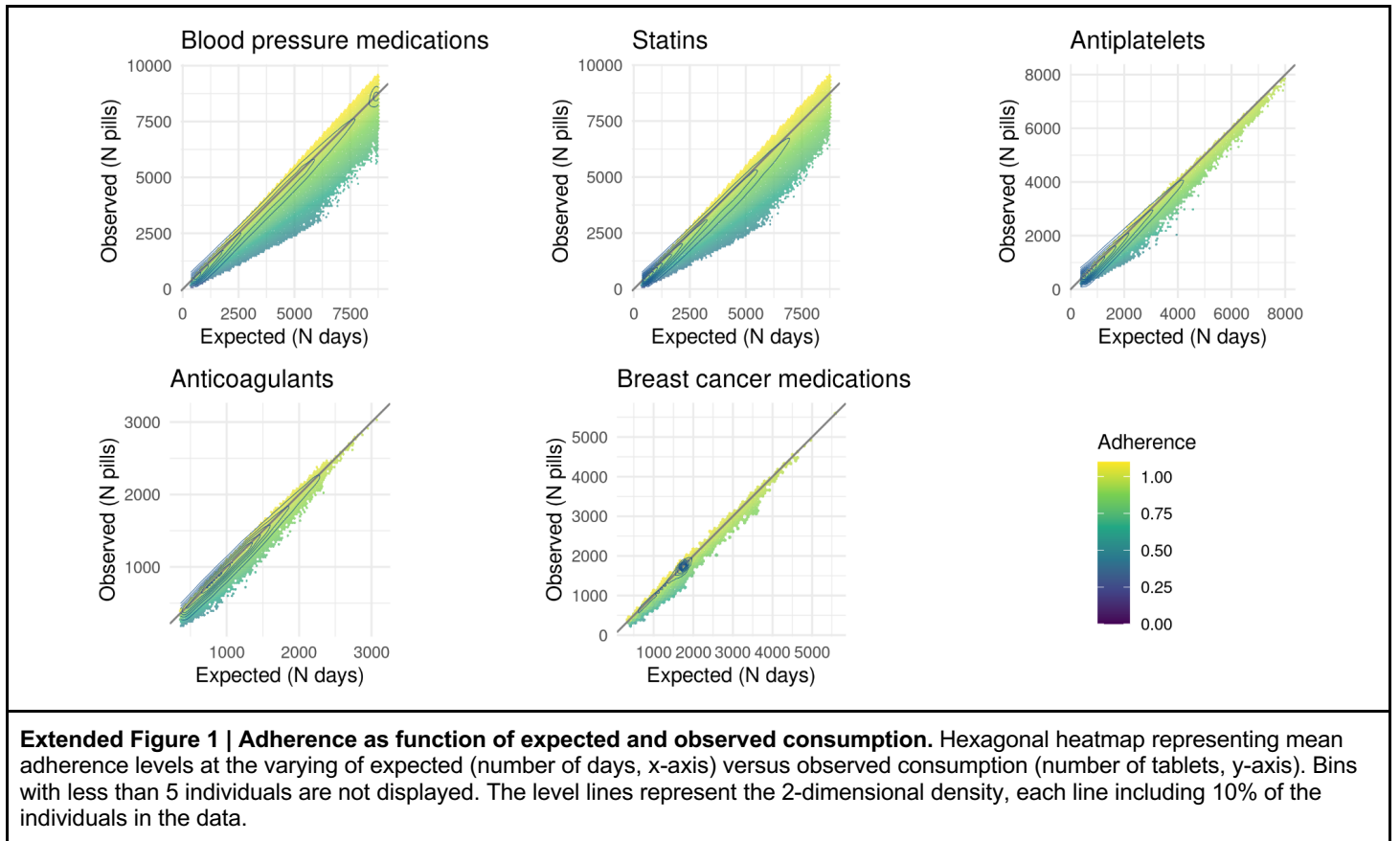
363 As for the adherence definition, first we cannot know if individuals are really taking medications
364 and instead rely on the expected and observed consumption. Second, we don't have
365 information on the dose prescribed by the doctor for the entire period and rely on the suggested
366 dosage of the package. For example, individuals which are suggested by the doctor to take half-
367 tablet of statins/day despite package indication, will result in low adherence. Two results
368 indicate that this behavior is not common. First, we do not see enrichment in adherence values
369 that would capture a systematic indication of non-standard dose of the medication. Second,
370 since 2015 prescription information is available as text. Using regular expressions to extract this
371 information (**Methods**) we found that in 2019, 96% of the prescriptions were indicating 1 statin
372 tablet/day. Finally, the observed adherence is higher than what was reported from a previous
373 Finnish study³⁸. Considering only individuals that had taken medication for at least 12 months
374 and excluding long inactive periods might have contributed to higher adherence values.
375 Nonetheless, early discontinuation is captured by our persistence measure, while long breaks in
376 drug usage might reflect hospital admission, partial emigration, or other external factors.
377 Overall, we used a definition of adherence that is more robust to large external shocks and
378 better suited to capture smaller and consistent variations in drug purchases over longer time
379 periods.

380

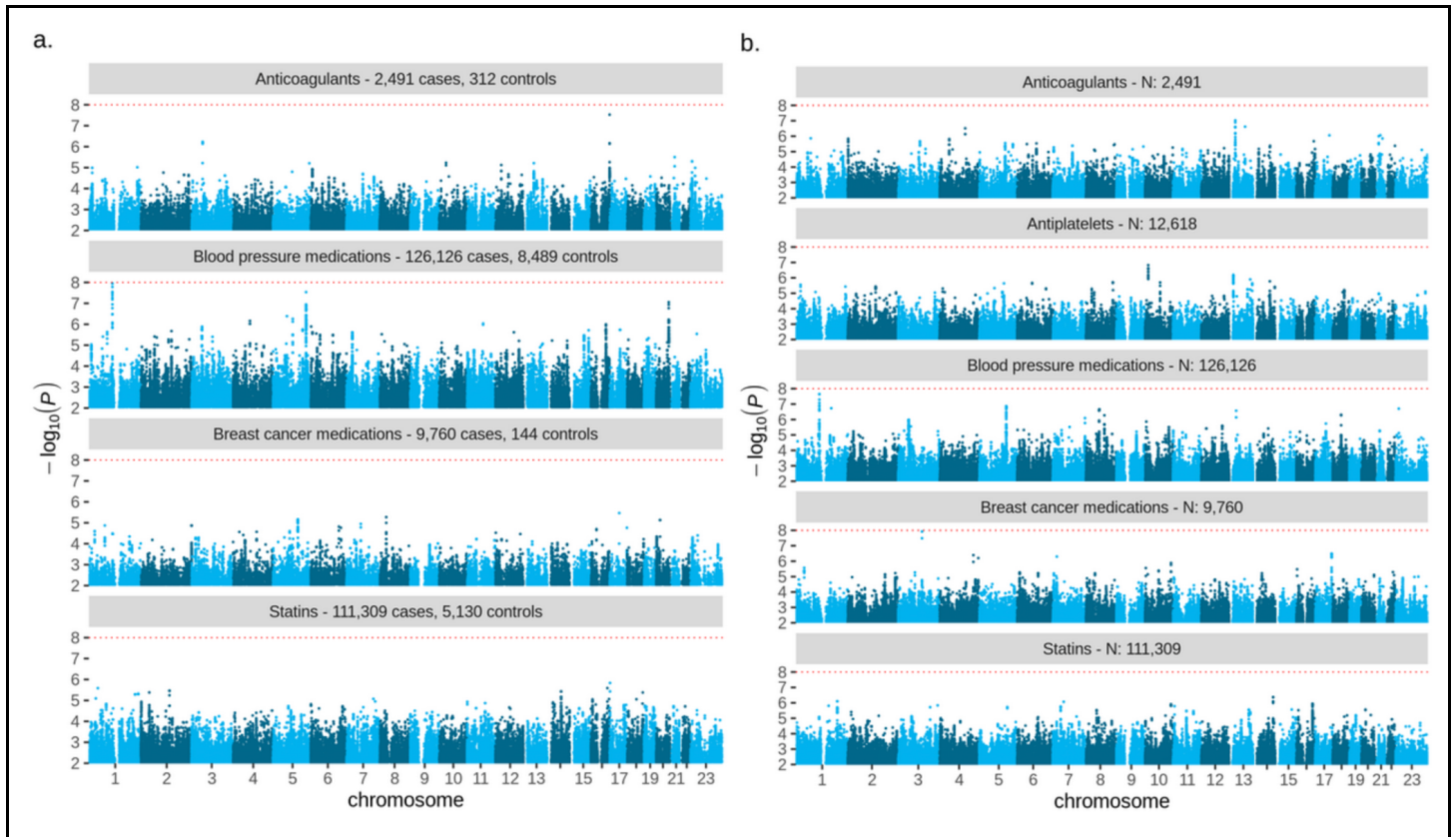
381 In conclusion, our results suggest a limited role of genetic risk factors, including clinically
382 relevant pharmacogenes, in explaining persistence and adherence for 5 common medication
383 classes that require long-term, regular therapy. While larger GWASs are needed to identify
384 smaller genetic effects, the observed genetic overlap with behavioral traits, might complicate the
385 interpretation of the results. The robust associations with measures of social deprivation
386 suggest that we need better understanding of the drivers of poor adherence in these socio-
387 economically disadvantaged groups. Identifying these drivers might offer points of intervention
388 in clinical practice, or help recognizing system-wide barriers for drug adherence.
389

390 **Extended Figures**

391 **Extended Figure 1**



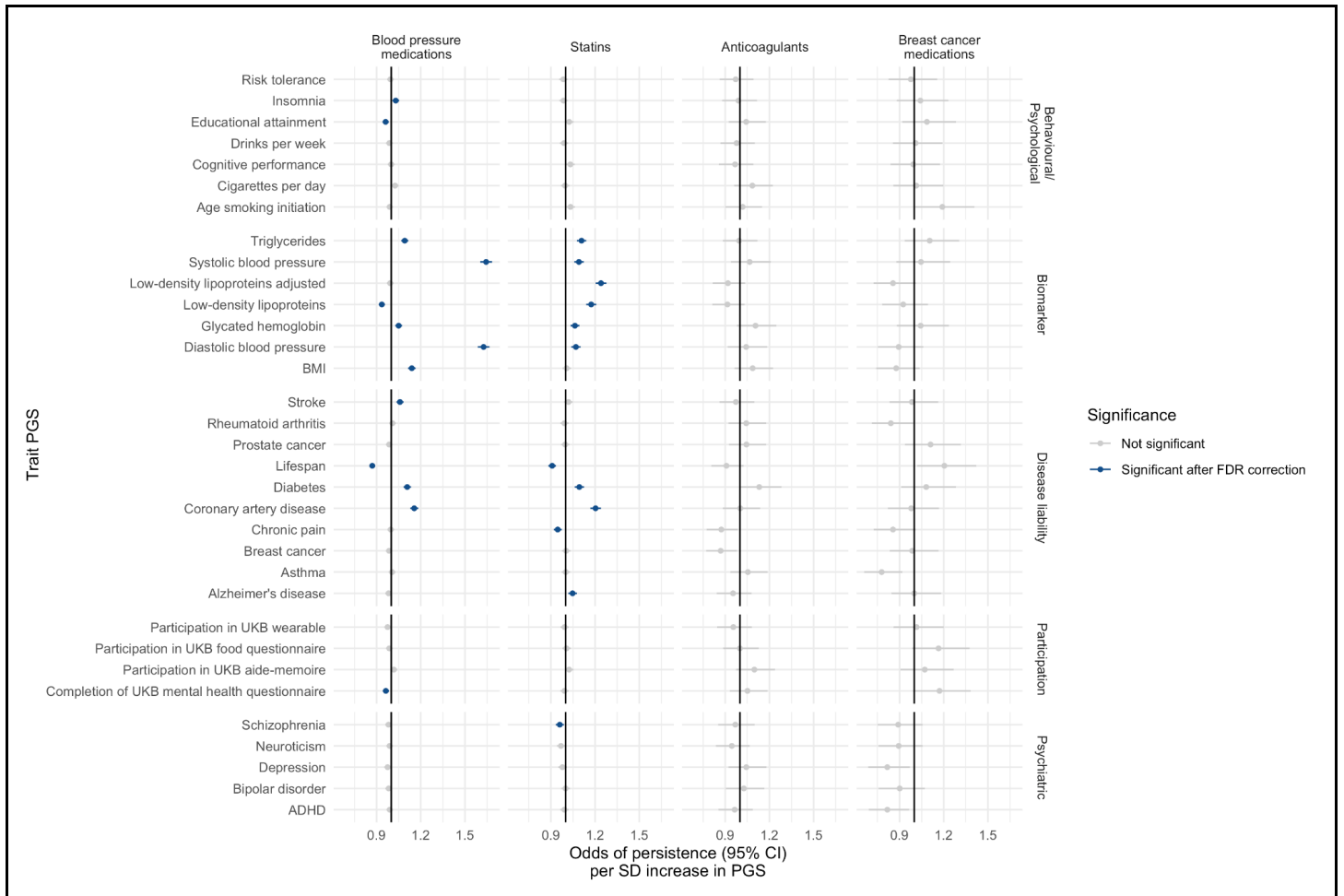
392
393
394
395
396
397
398
399
400
401
402



Extended Figure 2 | Genome-wide association results for persistence and adherence. a. results of genome-wide association study of persistence to each medication. Number of cases and controls are reported next to each drug name. Red dotted line represents genome-wide significance at P -value = 1×10^{-8} (Bonferroni corrected for 5 medications). b. results of genome-wide association study of adherence to each medication. Total sample size is reported next to each drug name. Red dotted line represents genome-wide significance at P -value = 1×10^{-8} (Bonferroni corrected for 5 medications). Results for 5 variants with significance $< 5 \times 10^{-8}$ are reported in Supplementary Table 10.

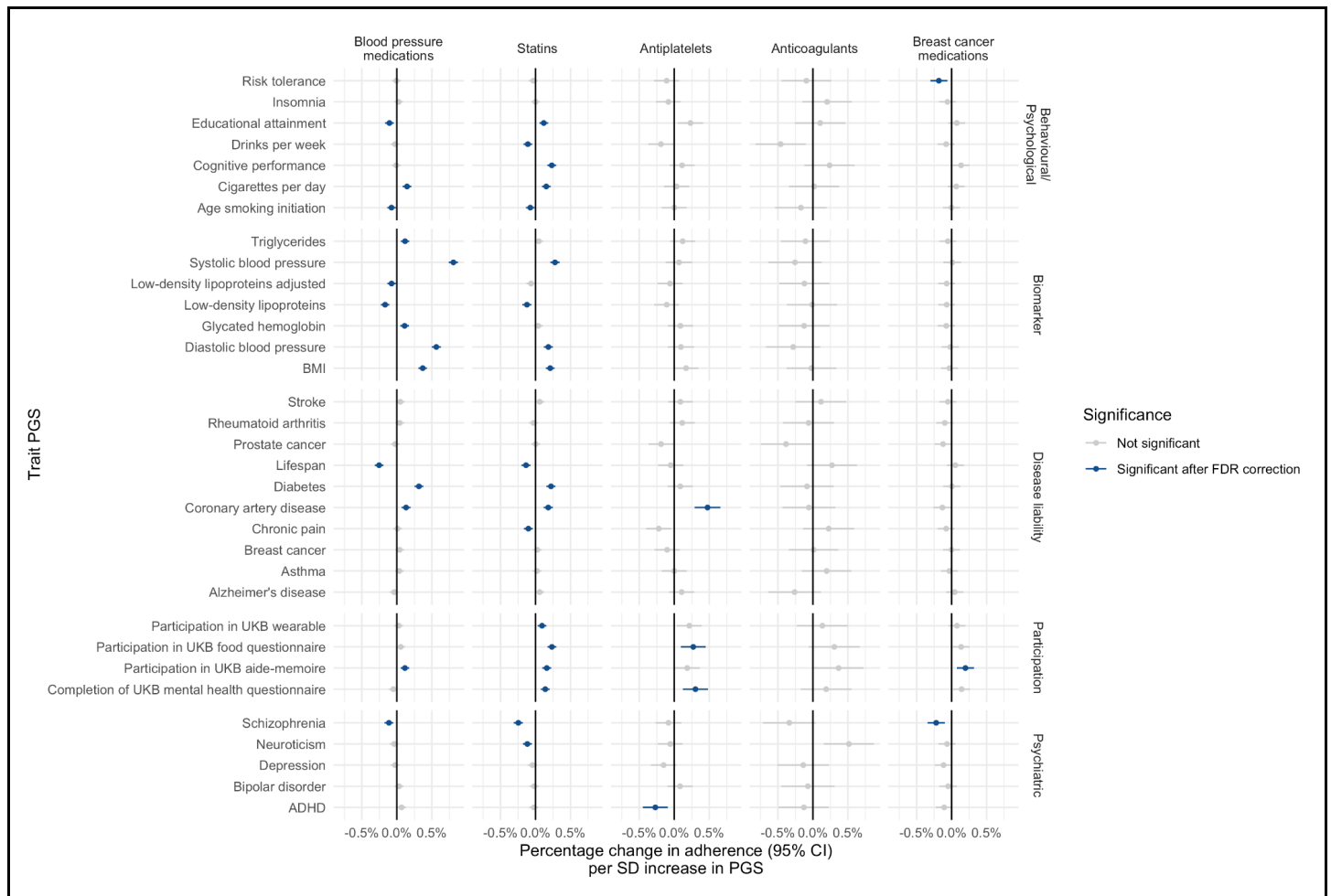
404
 405
 406
 407
 408
 409
 410
 411
 412
 413
 414
 415

416 **Extended Figure 3**



Extended Figure 3 | Associations between persistence and PGS for 33 clinically relevant traits. Odds of persistence per 1-SD increase in trait PGS. ORs are from a logistic regression model adjusted for sex, age at initiation, first 10 genetic principal components. Error bars represent the 95% confidence interval for the estimates. Results are reported in Supplementary Table 13.

417
 418
 419
 420
 421
 422
 423
 424
 425
 426
 427
 428



Extended Figure 4 | Associations between adherence and PGS for 33 clinically relevant traits. Percentage change in adherence per 1-SD increase in trait PGS. Coefficients are from a linear regression model adjusted for sex, age at initiation, first 10 genetic principal components. Error bars represent the 95% confidence interval for the estimates. Results are reported in Supplementary Table 14.

431 **Methods**

432 **FinRegistry and FinnGen study population.**

433 The FinRegistry dataset ²⁰ contains data from Finnish nationwide health, demographic, and
434 socioeconomic registries, for a total of 7 166 416 individuals. To ensure completeness of
435 information for the variables considered in the epidemiological analysis, we included only
436 individuals who were residents in Finland and alive on 1 January 2010 (5 339 804 individuals in
437 total). The FinnGen dataset ²¹ (**Supplementary Methods**) additionally contains genetic data for
438 a subset of the Finnish population (N = 430 885 for data freeze 10). We studied the two drug
439 usage phenotypes in adults only, meaning individuals needed to be at least 18 years old at
440 treatment initiation.

441 **Kela drug purchase register.**

442 The Social Insurance Institution of Finland (Kela) is a government agency that provides basic
443 economic security by financial support for everyone living in Finland. The Kela drug purchase
444 register contains information about any reimbursable prescription medication bought from
445 pharmacies in Finland between 1995 and 2020. We included only purchases from 1998 on to
446 ensure better homogeneity with the data from the other registries. Each data entry contains
447 information about the date of purchase, ATC code of the medication, number of purchased
448 packages, and the Nordic Article Number (VNR) associated with the package, which gives
449 information about the quantity and dosage of the medication. When the information was
450 available, we additionally excluded those purchases made using pharmacies dose distribution
451 services, which regularly provides patients with 2-week worth of medications at a time.

452

453 **The Estonian Biobank study population.**

454 The Estonian Biobank (EstBB) (**Supplementary Methods**) is a volunteer-based biobank that
455 has a sample size of approximately 211,000 participants, comprising over 20% of the adult
456 population of Estonia⁴⁴. The EstBB is linked with the National Health Insurance Fund's (NHIF)
457 database which was used as the EHR source. NHIF covers over 95% of the Estonian
458 population as a result of universal health care in Estonia and thus provides information on
459 diagnoses, prescribed and dispensed drugs for up to 19 years (2004-2023) from primary and
460 specialist care. Information on prescribed and dispensed drugs is collected from all pharmacies

461 in Estonia. The NHIF database contains information on the prescribed and dispensed drug
462 name, date of prescription and dispensing, International Classification of Diseases (ICD-10)
463 diagnosis codes, Anatomical-Therapeutic-Chemical (ATC) code of the drug, number of packs
464 dispensed, number of tablets in each package, and concentration of active ingredient in each
465 tablet. The study population in the Estonian Biobank cohort consisted of individuals that initiated
466 their treatment between 2007-2023.

467

468 **Medications included.**

469 We included medications commonly prescribed and purchased, that are typically used for a
470 prolonged time and do not have a significant direct effect on wellbeing. The classes of
471 medication we included are as follows: statins (C10AA* - all types of statins without
472 differentiation), blood pressure medications (C02* - antihypertensives, C03* - diuretics, C08* -
473 calcium channels blockers, C09* - agents acting on the renin-angiotensin system), antiplatelets
474 (B01AC04 - clopidogrel and B01AC30 - acetylsalicylic acid in combination with dipyridamole),
475 breast cancer medications (L02BA01 - tamoxifen, L02BG03 - anastrozole, L02BG04 - letrozole,
476 L02BG06 - exemestane), direct oral anticoagulants (DOAC) (B01AF01 - rivaroxaban, B01AF02 -
477 apixaban, B01AF03 - edoxaban, B01AE07 - dabigatran etexilate). For breast cancer
478 medications we included only females, starting the treatment after a breast cancer diagnosis.
479 For DOAC, only patients starting the treatment after an atrial fibrillation diagnosis were included.

480

481 The following drug classes or drugs were considered in the Estonian Biobank: statins drug class
482 (ATC C10AA*), and separately clopidogrel (ATC B01AC04), tamoxifen (L02BA01), fluvastatin
483 (ATC C10AA04), and rosuvastatin (ATC C10AA07). The patients were included if they were
484 over the age of 18 at the start of treatment initiation.

485 **Persistence.**

486 We define persistence¹⁸ as a binary phenotype, comparing individuals taking the medication for
487 at least 12 months (i.e. all individuals included in the adherence analysis) versus patients early-
488 discontinuing the drug after one purchase. To avoid right censoring, we considered as early
489 discontinuation only purchases made at least 2 years before the end of follow-up. End of follow-
490 up date was either death date, moving abroad date or the last date for which the data are
491 available (01.01.2020).

492

493 In the Estonian Biobank, for the non-persistence phenotype, we included individuals
494 discontinuing the treatment after one purchase that contained less than 3 packages and 100
495 tablets. We limited the drug supply that could be bought with one purchase to exclude
496 individuals who may have stocked medications due to moving abroad or due to other reasons.
497 We considered as early discontinuation only purchases made before 01.01.2022 (last date for
498 which the data are available (28.03.2023)) and at least one year before death date.

499 **Adherence.**

500 For each individual, we considered all registered purchases for each class of medication and
501 reconstructed individual drug purchasing trajectories. We then estimated adherence using the
502 Medication Possession Ratio measure (MPR) ¹⁹:

503

$$504 \quad MPR = \frac{\text{days of supply during observation period}}{\text{days in observation period}}$$

505

506 where

- 507 - *days of supply during observation period* is the total number of tablets purchased in the
- 508 trajectory, normalized assuming drug-specific daily doses (e.g. statins: 1 tablet/day)
- 509 - *days in observation period* is the sum of the intervals (in days) between all purchases
- 510 considered in the trajectory

511

512 When reconstructing the trajectories, we excluded the last purchase and purchases for which
513 the interval to the next one was of at least 150 days without tablets available. We considered
514 this as a break in the treatment which should not be taken into account into the adherence
515 calculation. When patients were switching to different formulations (within the same medication
516 class) and the interval between purchases was shorter than the drug supply, we discarded the
517 leftover tablets of the previous formulation. We included only individuals with at least 1 year of
518 purchases. We further excluded individuals with adherence greater than 1.1, to exclude
519 overbuying behaviors.

520

521 In the Estonian Biobank, patients were included if they had purchased at least 150 tablets.
522 Individual purchase trajectories were constructed and adherence was estimated using the same
523 criteria specified above with the exception of excluding 150 day intervals without available

524 treatment. The Estonian medical system does not offer services where the treatment would be
525 provided by the hospital without it being recorded in the drug purchase database (with the
526 exception of inpatient care). Therefore, we considered all gaps in drug purchases as true breaks
527 in treatment.

528 **Sex and gender.**

529 Sex was used as covariate in all of the analyses and no analyses were run separately in each
530 sex. In FinRegistry, sex was defined as recorded in the population registries from the Digital and
531 Population Data Services Agency. In FinnGen, genetically determined sex was used, after
532 quality control removal for individuals with discrepancy between sex reported in the population
533 registries and genetically determined sex. In the Estonian Biobank, sex was extracted from the
534 Estonian National Identity number which is created based on the sex recorded in the Estonian
535 Birth Registry. Quality assurance was carried out where only individuals whose sex from the
536 National Identity number matched the sex in genotype data are included.

537

538 **Health, demographic and socioeconomic risk factors for persistence and adherence.**

539 We assessed the effect of the following 8 epidemiological risk factors on persistence and
540 adherence:

- 541 - sex (not considered for breast cancer medications)
- 542 - age at treatment initiation: age when the first purchase was recorded
- 543 - secondary prevention: whether the treatment was started after a major event related to
544 the medication considered. The following diagnosis (ICD-10 codes) were considered:
 - 545 - statins: major coronary heart disease (I20.0, I21, I22), cerebrovascular diseases
546 (I60-I69), atherosclerosis (excluding cerebral, coronary and PAD) (I70)
 - 547 - antiplatelets: stroke (I60-I64), transient ischemic attack (G45), myocardial
548 infarction (I21, I22)
 - 549 - BP medications: no specific outcome was considered, as this is a broader class
550 of medications
 - 551 - breast cancer medications: breast cancer (C50) - only secondary prevention
552 patients were included
 - 553 - DOAC: atrial fibrillation (I48), pulmonary embolism or venous thromboembolism
554 (I26, I80, I87.1) - only secondary prevention patients were included

- 555 - Charlson comorbidity index (at treatment initiation): we considered patients comorbidity
556 status at treatment initiation by computing the Charlson comorbidity index (CCI) based
557 on all the diagnoses registered previous to the first purchase. This was computed using
558 the R package ICCI (<https://github.com/dsgelab/ICCI>), which uses the R package
559 comorbidity (<https://cran.r-project.org/web/packages/comorbidity/index.html>).
- 560 - years of education (at treatment initiation): years expected to complete the recorded
561 education level. When the information at treatment baseline was not available, the first
562 available record was considered.
- 563 - living area (at treatment initiation): urban vs rural, as classified by the Finnish digital and
564 population data agency (DVV).
- 565 - mother tongue: Finnish or Swedish (the two official languages of Finland) vs any other
566 language
- 567 - social assistance benefits: receiving (or not) any amount of social assistance benefit in
568 the year before treatment initiation

569 The effect sizes of each factor on persistence and adherence were derived by using a
570 multivariate logistic/linear regression model including all the factors, adjusting for year of birth.

571
572 For persistence, the estimated effects are reported as OR from the logistic regression model,
573 while for adherence we reported the percentage change in adherence by rescaling the log(OR)
574 from the linear model by a factor of 1.1 (maximum adherence value). To provide a better
575 interpretation of the results, in Figure 3 we report the effect sizes for a model where continuous
576 variables were dichotomized according to the following thresholds: age at initiation > 60; CCI >
577 5; education, university degree or higher. The same effect sizes keeping the continuous
578 variables as such (standardized to have mean 0 and variance equal to 1) are reported in
579 **Supplementary Table 5-6.**

580
581 Among the health, demographic and socioeconomic factors considered in FinRegistry, the
582 following were available in the Estonian Biobank: sex, age at treatment initiation, birth year, type
583 of prevention, and years of education. Age at treatment initiation, birth year and years of
584 education were standardized to have mean 0 and variance equal to 1. We assessed the
585 association between statin persistence and adherence with these factors by using multivariate
586 logistic and linear regression models, respectively, while only considering individuals with
587 complete information for all variables (N =27 339).

588 **Pharmacogenes selection and phenotypes definition.**

589 We selected the pharmacogenes to test based on the guidelines provided by the Clinical
590 Pharmacogenetics Implementation Consortium²⁴. The CPIC assigns levels to gene/drug pairs
591 based on PharmGKB³⁹ annotation levels, recommendations by external groups (e.g. FDA,
592 EMA) or by other professional societies. We selected gene/drug pairs to match all the ATC
593 codes included in our analyses, and with a CPIC level A or B, meaning that prescribing actions
594 (e.g. alternative therapies or dosing) are recommended when the pharmacogene is present.

595 The gene/drug pairs we selected are: *ABCG2* for rosuvastatin, *CYP2C9* for fluvastatin,
596 *SLCO1B1* for all statins, *CYP2C19* for clopidogrel, and *CYP2D6* for tamoxifen.

597 For each gene and for each individual included in the analyses, we defined their star alleles
598 diplotypes to test starting from the imputed phased genotypes available in FinnGen and using
599 Stargazer^{40,41}. Having genotype data available, we could define only diplotypes captured by
600 SNP and not by structural variations (gene deletions or copy number variations). We then
601 grouped individuals based on the phenotypes also provided as output by Stargazer and
602 reflecting the metabolic activity score associated to each specific diplotype
603 (poor/decreased/increased function for *SLCO1B1* and *ABCG2*, poor/intermediate/ultrarapid
604 metabolizer for *CYP2D6*, *CYP2C9*, *CYP2C19*). In the Estonian Biobank star alleles were called
605 from imputed phased genotypes available using PharmCAT⁴² and an in-house pipeline⁴³.

606

607 We used a logistic/linear regression model to estimate the association of each phenotype with
608 persistence/adherence, adjusting by sex, age at initiation (standardized) and first 10 principal
609 genetic components (standardized). We only tested phenotypes when defined for at least 5
610 individuals in the adherence analysis, or for at least 5 persistent/non-persistent individuals in the
611 persistence analysis.

612

613 **Genetic risk factors of persistence and adherence.**

614 We used REGENIE⁴⁴ to run a GWAS of persistence and adherence to each medication (see
615 **Supplementary Methods** for details about genotyping and imputation in FinnGen). Persistence
616 was treated as a binary phenotype, while adherence was kept as continuous trait, but scaled so
617 to have mean 0 and variance equal to 1. For both analyses we adjusted for sex, genotyping
618 batch, first 10 principal genetic components, age at first purchase and year of birth. The

619 resulting summary statistics were post-processed to keep only SNPs with INFO score ≥ 0.8 and
620 MAF $\geq 1\%$.

621
622 Genetic correlations between persistence and adherence and 33 publicly available traits (listed
623 in **Supplementary Table 13**) were calculated using linkage disequilibrium score regression ⁴⁵.

624
625 PGSs for the same traits were derived using PRS-CS ⁴⁶. Their association with persistence and
626 adherence was assessed by running a logistic/linear regression model for each PGS
627 individually, adjusting for sex, age at initiation and the first 10 genetic principal components
628 (standardized).

629
630 Weights for the same traits (**Supplementary Table 13**) were applied to the Estonian Biobank
631 individuals using PLINK⁴⁷. Similarly, the association of the PGSs with statin persistence and
632 adherence was assessed by running a logistic or linear regression model for each PGS
633 individually, adjusting for sex, age at initiation, and the first 10 principal components. The PGS
634 score, age at treatment initiation, and principal components were standardized.

635
636 We also derived a PGS for adherence to statins from the summary statistics of the GWAS in
637 FinnGen using PRS-CS and applied it to the Estonian Biobank individuals using PLINK. We
638 then tested the association between statin adherence PGS and the adherence observed in the
639 Estonian Biobank using a linear regression model, adjusting for sex, age at initiation and the
640 first 10 genetic principal components.

641

642 **Acknowledgements**

643 We are grateful to Finnish individuals, whose data made this study possible. We would also like
644 to thank the entire FinRegistry team for making the data available for the study.

645 We want to acknowledge the participants and investigators of FinnGen study. The FinnGen
646 project is funded by two grants from Business Finland (HUS 4685/31/2016 and UH
647 4386/31/2016) and the following industry partners: AbbVie Inc., AstraZeneca UK Ltd, Biogen
648 MA Inc., Bristol Myers Squibb (and Celgene Corporation & Celgene International II Sàrl),
649 Genentech Inc., Merck Sharp & Dohme LCC, Pfizer Inc., GlaxoSmithKline Intellectual Property
650 Development Ltd., Sanofi US Services Inc., Maze Therapeutics Inc., Janssen Biotech Inc,

651 Novartis AG, and Boehringer Ingelheim International GmbH. Following biobanks are
652 acknowledged for delivering biobank samples to FinnGen: Auria Biobank
653 (www.auria.fi/biopankki), THL Biobank (www.thl.fi/biobank), Helsinki Biobank
654 (www.helsinginbiopankki.fi), Biobank Borealis of Northern Finland
655 ([https://www.ppshp.fi/Tutkimus-ja-opetus/Biopankki/Pages/Biobank-Borealis-briefly-in-
656 English.aspx](https://www.ppshp.fi/Tutkimus-ja-opetus/Biopankki/Pages/Biobank-Borealis-briefly-in-English.aspx)), Finnish Clinical Biobank Tampere ([www.tays.fi/en-
657 US/Research_and_development/Finnish_Clinical_Biobank_Tampere](http://www.tays.fi/en-US/Research_and_development/Finnish_Clinical_Biobank_Tampere)), Biobank of Eastern
658 Finland (www.ita-suomenbiopankki.fi/en), Central Finland Biobank ([www.ksshp.fi/fi-
659 FI/Potilaalle/Biopankki](http://www.ksshp.fi/fi-FI/Potilaalle/Biopankki)), Finnish Red Cross Blood Service Biobank
660 (www.veripalvelu.fi/verenluovutus/biopankkitoiminta), Terveystalo Biobank
661 (www.terveystalo.com/fi/Yritystietoa/Terveystalo-Biopankki/Biopankki/) and Arctic Biobank
662 ([https://www oulu.fi/en/university/faculties-and-units/faculty-medicine/northern-finland-birth-
663 cohorts-and-arctic-biobank](https://www oulu.fi/en/university/faculties-and-units/faculty-medicine/northern-finland-birth-cohorts-and-arctic-biobank)). All Finnish Biobanks are members of BBMRI.fi infrastructure
664 (www.bbmri.fi). Finnish Biobank Cooperative -FINBB (<https://finbb.fi/>) is the coordinator of
665 BBMRI-ERIC operations in Finland. The Finnish biobank data can be accessed through the
666 Fingenious[®] services (<https://site.fingenious.fi/en/>) managed by FINBB.

667 The authors for the Estonian Biobank would like to express our gratitude to all EstBB
668 participants who made it possible to conduct this study. Data analysis was carried out in part in
669 the High-Performance Computing Centre of University of Tartu. This work was written at writing
670 retreats and writing days organized by the University of Tartu Institute of Genomics. The
671 Estonian Biobank Research Team responsible for data collection, genotyping, QC and
672 imputation: Andres Metspalu, Tõnu Esko, Reedik Mägi, Mari Nelis and Georgi Hudjashov.

673 This study has received funding from the European Union's Horizon 2020 research and
674 innovation programme under grant agreement No 101016775; from the European Research
675 Council (ERC) under the European Union's Horizon 2020 research and innovation program
676 (grant number 945733); from Academy of Finland fellowship grant N. 323116; from the
677 European Union through the European Regional Development Fund Project No. 2014-
678 2020.4.01.15-0012 GENTRANSMED; the European Union's Horizon 2020 Research and
679 Innovation Programme under Grant agreement 847776; the Estonian Research Council grant
680 number PSG615.

681

682 **Data and code availability**

683 Data dictionaries for FinRegistry are publicly available on the FinRegistry website
684 (www.finregistry.fi/finnish-registry-data). Access to FinRegistry data can be obtained by
685 submitting a data permit application for individual-level data for the Finnish social and health
686 data permit authority Findata (<https://asiointi.findata.fi/>). The application includes information on
687 the purpose of data use; the requested data, including the variables, definitions for the target
688 and control groups, and external datasets to be combined with FinRegistry data; the dates of
689 the data needed; and a data utilization plan. The requests are evaluated on a case-by-case
690 basis. Once approved, the data are sent to a secure computing environment Kapseli and can be
691 accessed within the European Economic Area (EEA) and countries with an adequacy decision
692 from the European Commission.

693 Access to individual level data from the Estonian Biobank can be obtained through the Estonian
694 Biobank, following standard data access procedures
695 (<https://genomics.ut.ee/en/content/estonian-biobank>). All research using the Estonian Biobank
696 data is regulated by the Human Genes Research Act and must be approved by the Estonian
697 Committee of Bioethics and Human Research.

698 Analysis code used to produce the results is available on GitHub at:
699 <https://github.com/dsgelab/drugs-persistence-adherence>

700

701 **Ethics declarations**

702 FinRegistry is a collaboration project of the Finnish Institute for Health and Welfare (THL) and
703 the Data Science Genetic Epidemiology research group at the Institute for Molecular Medicine
704 Finland (FIMM), University of Helsinki. The FinRegistry project has received the following
705 approvals for data access from the National Institute of Health and Welfare
706 (THL/1776/6.02.00/2019 and subsequent amendments), DVV (VRK/5722/2019-2), Finnish
707 Center for Pension (ETK/SUTI 22003) and Statistics Finland (TK-53-1451-19). The FinRegistry
708 project has received IRB approval from the National Institute of Health and Welfare (Kokous
709 7/2019).

710 Patients and control subjects in FinnGen provided informed consent for biobank research,
711 based on the Finnish Biobank Act. Alternatively, separate research cohorts, collected prior the

712 Finnish Biobank Act came into effect (in September 2013) and start of FinnGen (August 2017),
713 were collected based on study-specific consents and later transferred to the Finnish biobanks
714 after approval by Fimea (Finnish Medicines Agency), the National Supervisory Authority for
715 Welfare and Health. Recruitment protocols followed the biobank protocols approved by Fimea.
716 The Coordinating Ethics Committee of the Hospital District of Helsinki and Uusimaa (HUS)
717 statement number for the FinnGen study is Nr HUS/990/2017.

718
719 The FinnGen study is approved by Finnish Institute for Health and Welfare (permit numbers:
720 THL/2031/6.02.00/2017, THL/1101/5.05.00/2017, THL/341/6.02.00/2018,
721 THL/2222/6.02.00/2018, THL/283/6.02.00/2019, THL/1721/5.05.00/2019 and
722 THL/1524/5.05.00/2020), Digital and population data service agency (permit numbers:
723 VRK43431/2017-3, VRK/6909/2018-3, VRK/4415/2019-3), the Social Insurance Institution
724 (permit numbers: KELA 58/522/2017, KELA 131/522/2018, KELA 70/522/2019, KELA
725 98/522/2019, KELA 134/522/2019, KELA 138/522/2019, KELA 2/522/2020, KELA 16/522/2020),
726 Findata permit numbers THL/2364/14.02/2020, THL/4055/14.06.00/2020,
727 THL/3433/14.06.00/2020, THL/4432/14.06/2020, THL/5189/14.06/2020,
728 THL/5894/14.06.00/2020, THL/6619/14.06.00/2020, THL/209/14.06.00/2021,
729 THL/688/14.06.00/2021, THL/1284/14.06.00/2021, THL/1965/14.06.00/2021,
730 THL/5546/14.02.00/2020, THL/2658/14.06.00/2021, THL/4235/14.06.00/2021, Statistics Finland
731 (permit numbers: TK-53-1041-17 and TK/143/07.03.00/2020 (earlier TK-53-90-20)
732 TK/1735/07.03.00/2021, TK/3112/07.03.00/2021) and Finnish Registry for Kidney Diseases
733 permission/extract from the meeting minutes on 4th July 2019.

734
735 The Biobank Access Decisions for FinnGen samples and data utilized in FinnGen Data Freeze
736 10 include: THL Biobank BB2017_55, BB2017_111, BB2018_19, BB_2018_34, BB_2018_67,
737 BB2018_71, BB2019_7, BB2019_8, BB2019_26, BB2020_1, BB2021_65, Finnish Red Cross
738 Blood Service Biobank 7.12.2017, Helsinki Biobank HUS/359/2017, HUS/248/2020,
739 HUS/150/2022 § 12, §13, §14, §15, §16, §17, §18, and §23, Auria Biobank AB17-5154 and
740 amendment #1 (August 17 2020) and amendments BB_2021-0140, BB_2021-0156 (August 26
741 2021, Feb 2 2022), BB_2021-0169, BB_2021-0179, BB_2021-0161, AB20-5926 and
742 amendment #1 (April 23 2020)and it's modification (Sep 22 2021), Biobank Borealis of Northern
743 Finland_2017_1013, 2021_5010, 2021_5018, 2021_5015, 2021_5023, 2021_5017, 2022_6001,
744 Biobank of Eastern Finland 1186/2018 and amendment 22 § /2020, 53§/2021, 13§/2022,
745 14§/2022, 15§/2022, Finnish Clinical Biobank Tampere MH0004 and amendments (21.02.2020

746 & 06.10.2020), §8/2021, §9/2022, §10/2022, §12/2022, §20/2022, §21/2022, §22/2022,
747 §23/2022, Central Finland Biobank 1-2017, and Terveystalo Biobank STB 2018001 and
748 amendment 25th Aug 2020, Finnish Hematological Registry and Clinical Biobank decision 18th
749 June 2021, Arctic biobank P0844: ARC_2021_1001.

750

751 The analysis of individual-level data from the Estonian Biobank was carried out under ethical
752 approval nr 1.1-12/624 from the Estonian Committee on Bioethics and Human Research
753 (Estonian Ministry of Social Affairs), using data according to data release application nr T12 6-
754 7/GI/11086 from the Estonian Biobank.

755

756

757 **Authors contribution**

758 Study design: MC, AC, SJ, MN, KL, LM and AG. Data analysis: MC, AC and HMK. Results
759 interpretation: MC, AC, HMK, SJ, PK, TK, MF, SR, MN, KL, LM, AG. Writing – original draft:
760 MC, AC and AG. All authors were involved in further drafts of the manuscript and revised it
761 critically for content. All authors gave final approval of the version to be published. MC, AC and
762 HMK contributed equally to this work.

763 **Conflicts of interest:** AG is CEO and founder of Real World Genetics Oy.

764 **References**

- 765 1. Osterberg, L. & Blaschke, T. Adherence to medication. *N. Engl. J. Med.* **353**, 487–497 (2005).
- 766 2. Simpson, R. J., Jr & Mendys, P. The effects of adherence and persistence on clinical outcomes in
767 patients treated with statins: a systematic review. *J. Clin. Lipidol.* **4**, 462–471 (2010).
- 768 3. Miller, N. H., Hill, M., Kottke, T. & Ockene, I. S. The multilevel compliance challenge:
769 recommendations for a call to action. A statement for healthcare professionals. *Circulation* **95**, 1085–
770 1090 (1997).
- 771 4. Kardas, P., Lewek, P. & Matyjaszczyk, M. Determinants of patient adherence: a review of systematic
772 reviews. *Front. Pharmacol.* **4**, 91 (2013).
- 773 5. Sabaté, E. *Adherence to Long-Term Therapies: Evidence for Action*. (World Health Organization,
774 2003).
- 775 6. Simpson, S. H. *et al.* A meta-analysis of the association between adherence to drug therapy and
776 mortality. *BMJ* **333**, 15 (2006).
- 777 7. Chan, D. C. *et al.* Patient, physician, and payment predictors of statin adherence. *Med. Care* **48**,
778 196–202 (2010).
- 779 8. Citarella, A. *et al.* Family history of cardiovascular disease and influence on statin therapy
780 persistence. *Eur. J. Clin. Pharmacol.* **70**, 701–707 (2014).
- 781 9. Shin, D. W. *et al.* Antihypertensive medication adherence in cancer survivors and its affecting factors:
782 results of a Korean population-based study. *Support. Care Cancer* **19**, 211–220 (2010).
- 783 10. Yang, Y. *et al.* Predictors of medication nonadherence among patients with diabetes in Medicare Part
784 D programs: a retrospective cohort study. *Clin. Ther.* **31**, 2178–88; discussion 2150-1 (2009).
- 785 11. Kariis, H. M. *et al.* The role of depression and antidepressant treatment in antihypertensive
786 medication adherence and persistence: Utilising electronic health record data. *J. Psychiatr. Res.* **168**,
787 269–278 (2023).
- 788 12. Rolnick, S. J., Pawloski, P. A., Hedblom, B. D., Asche, S. E. & Bruzek, R. J. Patient characteristics
789 associated with medication adherence. *Clin. Med. Res.* **11**, 54–65 (2013).
- 790 13. Yeaw, J., Benner, J. S., Walt, J. G., Sian, S. & Smith, D. B. Comparing adherence and persistence
791 across 6 chronic medication classes. *J. Manag. Care Pharm.* **15**, 728–740 (2009).

- 792 14. Pirmohamed, M. Pharmacogenomics: current status and future perspectives. *Nat. Rev. Genet.* **24**,
793 350–362 (2023).
- 794 15. Swen, J. J. *et al.* A 12-gene pharmacogenetic panel to prevent adverse drug reactions: an open-
795 label, multicentre, controlled, cluster-randomised crossover implementation study. *Lancet* **401**, 347–
796 356 (2023).
- 797 16. Hess, L. M., Raebel, M. A., Conner, D. A. & Malone, D. C. Measurement of adherence in pharmacy
798 administrative databases: a proposal for standard definitions and preferred measures. *Ann.*
799 *Pharmacother.* **40**, 1280–1288 (2006).
- 800 17. Vrijens, B. *et al.* A new taxonomy for describing and defining adherence to medications. *Br. J. Clin.*
801 *Pharmacol.* **73**, 691–705 (2012).
- 802 18. Cramer, J. A. *et al.* Medication compliance and persistence: terminology and definitions. *Value*
803 *Health* **11**, 44–47 (2008).
- 804 19. Andrade, S. E., Kahler, K. H., Frech, F. & Chan, K. A. Methods for evaluation of medication
805 adherence and persistence using automated databases. *Pharmacoepidemiol. Drug Saf.* **15**, 565–74;
806 discussion 575-7 (2006).
- 807 20. Viippola, E. *et al.* Data Resource Profile: Nationwide registry data for high-throughput epidemiology
808 and machine learning (FinRegistry). *Int. J. Epidemiol.* (2023) doi:10.1093/ije/dyad091.
- 809 21. Kurki, M. I. *et al.* FinnGen provides genetic insights from a well-phenotyped isolated population.
810 *Nature* **613**, 508–518 (2023).
- 811 22. Leitsalu, L. *et al.* Cohort Profile: Estonian Biobank of the Estonian Genome Center, University of
812 Tartu. *Int. J. Epidemiol.* **44**, 1137–1147 (2015).
- 813 23. DiMatteo, M. R. Variations in patients' adherence to medical recommendations: a quantitative review
814 of 50 years of research. *Med. Care* **42**, 200–209 (2004).
- 815 24. Relling, M. V. & Klein, T. E. CPIC: Clinical Pharmacogenetics Implementation Consortium of the
816 Pharmacogenomics Research Network. *Clin. Pharmacol. Ther.* **89**, 464–467 (2011).
- 817 25. Cooper-DeHoff, R. M. *et al.* The Clinical Pharmacogenetics Implementation Consortium Guideline for
818 SLCO1B1, ABCG2, and CYP2C9 genotypes and Statin-Associated Musculoskeletal Symptoms. *Clin.*
819 *Pharmacol. Ther.* **111**, 1007–1021 (2022).

- 820 26. Lee, C. R. *et al.* Clinical Pharmacogenetics Implementation Consortium Guideline for CYP2C19
821 Genotype and Clopidogrel Therapy: 2022 Update. *Clin. Pharmacol. Ther.* **112**, 959–967 (2022).
- 822 27. Goetz, M. P. *et al.* Clinical Pharmacogenetics Implementation Consortium (CPIC) Guideline for
823 CYP2D6 and Tamoxifen Therapy. *Clin. Pharmacol. Ther.* **103**, 770–777 (2018).
- 824 28. Dönertaş, H. M., Fabian, D. K., Valenzuela, M. F., Partridge, L. & Thornton, J. M. Common genetic
825 associations between age-related diseases. *Nat Aging* **1**, 400–412 (2021).
- 826 29. Ghousaini, M. *et al.* Open Targets Genetics: systematic identification of trait-associated genes using
827 large-scale genetics and functional genomics. *Nucleic Acids Res.* **49**, D1311–D1320 (2021).
- 828 30. Tyrrell, J. *et al.* Genetic predictors of participation in optional components of UK Biobank. *Nat.*
829 *Commun.* **12**, 886 (2021).
- 830 31. Helin-Salmivaara, A. *et al.* Long-term persistence with statin therapy: a nationwide register study in
831 Finland. *Clin. Ther.* **30 Pt 2**, 2228–2240 (2008).
- 832 32. Zucker, I. & Prendergast, B. J. Sex differences in pharmacokinetics predict adverse drug reactions in
833 women. *Biol. Sex Differ.* **11**, 32 (2020).
- 834 33. Brabete, A. C. *et al.* A Sex- and Gender-Based Analysis of Adverse Drug Reactions: A Scoping
835 Review of Pharmacovigilance Databases. *Pharmaceuticals* **15**, (2022).
- 836 34. Kiiskinen, T. *et al.* Genetic predictors of lifelong medication-use patterns in cardiometabolic diseases.
837 *Nat. Med.* **29**, 209–218 (2023).
- 838 35. Hartonen, T. *et al.* Nationwide health, socio-economic and genetic predictors of COVID-19
839 vaccination status in Finland. *Nat Hum Behav* **7**, 1069–1083 (2023).
- 840 36. Shiraly, R., Khani Jeihooni, A. & Bakhshizadeh Shirazi, R. Perception of risk of hypertension related
841 complications and adherence to antihypertensive drugs: a primary healthcare based cross-sectional
842 study. *BMC Prim Care* **23**, 303 (2022).
- 843 37. Harden, K. P. & Koellinger, P. D. Using genetics for social science. *Nat Hum Behav* **4**, 567–576
844 (2020).
- 845 38. Aarnio, E. J. *et al.* Register-based predictors of adherence among new statin users in Finland. *J.*
846 *Clin. Lipidol.* **8**, 117–125 (2014).
- 847 39. Whirl-Carrillo, M. *et al.* An Evidence-Based Framework for Evaluating Pharmacogenomics

848 Knowledge for Personalized Medicine. *Clin. Pharmacol. Ther.* **110**, 563–572 (2021).

849 40. Lee, S.-B. *et al.* Stargazer: a software tool for calling star alleles from next-generation sequencing
850 data using CYP2D6 as a model. *Genet. Med.* **21**, 361–372 (2019).

851 41. Lee, S.-B., Wheeler, M. M., Thummel, K. E. & Nickerson, D. A. Calling Star Alleles With Stargazer in
852 28 Pharmacogenes With Whole Genome Sequences. *Clin. Pharmacol. Ther.* **106**, 1328–1337
853 (2019).

854 42. Sangkuhl, K. *et al.* Pharmacogenomics Clinical Annotation Tool (PharmCAT). *Clin. Pharmacol. Ther.*
855 **107**, 203–210 (2020).

856 43. Reisberg, S. *et al.* Translating genotype data of 44,000 biobank participants into clinical
857 pharmacogenetic recommendations: challenges and solutions. *Genet. Med.* **21**, 1345–1354 (2019).

858 44. Mbatchou, J. *et al.* Computationally efficient whole-genome regression for quantitative and binary
859 traits. *Nat. Genet.* **53**, 1097–1103 (2021).

860 45. Bulik-Sullivan, B. *et al.* An atlas of genetic correlations across human diseases and traits. *Nat. Genet.*
861 **47**, 1236–1241 (2015).

862 46. Ge, T., Chen, C.-Y., Ni, Y., Feng, Y.-C. A. & Smoller, J. W. Polygenic prediction via Bayesian
863 regression and continuous shrinkage priors. *Nat. Commun.* **10**, 1776 (2019).

864 47. Purcell, S. *et al.* PLINK: a tool set for whole-genome association and population-based linkage
865 analyses. *Am. J. Hum. Genet.* **81**, 559–575 (2007).

866