

# 1 **Wnt Signaling Regulation in Bone of Postmenopausal Women With Type 2** 2 **Diabetes**

3  
4 Giulia Leanza MSc, PhD<sup>1,2</sup>, Francesca Cannata MSc, PhD<sup>1</sup>, Malak Faraj MSc<sup>1</sup>, Claudio Pedone  
5 MD, PhD<sup>3</sup>, Viola Viola MSc<sup>1</sup>, Flavia Tramontana MSc, PhD<sup>1,2</sup>, Niccolò Pellegrini MSc<sup>1</sup>,  
6 Gianluca Vadalà, MD, PhD<sup>4</sup>, Alessandra Piccoli PhD<sup>1</sup>, Rocky Strollo MD, PhD<sup>5</sup>, Alec Beeve  
7 PhD<sup>6</sup>, Erica L Scheller DDS, PhD<sup>6</sup>, Simon Tang PhD<sup>7</sup>, Roberto Civitelli MD<sup>6</sup>, Mauro  
8 Maccarrone PhD<sup>8,9</sup>, Rocco Papalia MD, PhD<sup>4,\*†</sup> and Nicola Napoli MD, PhD<sup>1,2,6\*†</sup>

9  
10 <sup>1</sup> Department of Medicine and Surgery, Research Unit of Endocrinology and Diabetes,  
11 Università Campus Bio-Medico di Roma, Via Alvaro del Portillo 21, 00128 Roma, Italy;

12 <sup>2</sup> Operative Research Unit of Osteometabolic and Thyroid Diseases, Fondazione Policlinico  
13 Universitario Campus Bio-Medico, Via Alvaro del Portillo, 200 – 00128, Roma, Italy;

14 <sup>3</sup> Operative Research Unit of Geriatrics, Fondazione Policlinico Universitario Campus Bio-  
15 Medico, Via Alvaro del Portillo, 200 – 00128, Roma, Italy;

16 <sup>4</sup> Operative Research Unit of Orthopedic and Trauma Surgery, Fondazione Policlinico  
17 Universitario Campus Bio-Medico, Via Alvaro del Portillo, 200 – 00128, Roma, Italy;

18 <sup>5</sup> Department of Human Sciences and Promotion of the Quality of Life San Raffaele Roma Open  
19 University Via di Val Cannuta 247, 00166 Roma, Italy

20 <sup>6</sup> Department of Medicine, Division of Bone and Mineral Diseases. Musculoskeletal Research  
21 Center, Washington University School of Medicine, St. Louis, MO USA;

22 <sup>7</sup> Department of Orthopaedic Surgery, Washington University in St. Louis, St. Louis, MO, USA;

23 <sup>8</sup> Department of Biotechnological and Applied Clinical Sciences, University of L'Aquila, Via  
24 Vetoio snc, 67100 L'Aquila, Italy;

25 <sup>9</sup> European Center for Brain Research, Santa Lucia Foundation IRCCS, 00164 Roma, Italy

26  
27  
28  
29  
30 † These authors are equally senior authors.

31

32 **\*Corresponding Authors:**

33 Nicola Napoli, MD PhD

34 Department of Medicine and Surgery

35 Research Unit of Endocrinology and Diabetes

36 Università Campus Bio-Medico di Roma

37 Via Alvaro del Portillo 21

38 00128 Roma, Italy

39 [n.napoli@policlinicocampus.it](mailto:n.napoli@policlinicocampus.it)

40

41 Rocco Papalia, MD PhD

42 Operative Research Unit of Orthopedic and Trauma Surgery

43 Fondazione Policlinico Campus Bio-Medico di Roma

44 Via Alvaro del Portillo 200

45 00128 Roma, Italy

46 [r.papalia@fondazionepoliclinico.it](mailto:r.papalia@fondazionepoliclinico.it)

47

48 **Short title:** Wnt signaling in type 2 diabetes

49

50 **Keywords:** Diabetes, Bone, Wnt signaling, AGEs

51

52 **Disclosures**

53 All authors have nothing to disclose relevant to this work.

54

55

56

57

## 58 **Abstract**

59 Type 2 diabetes (T2D) is associated with higher fracture risk, despite normal or high bone mineral  
60 density. We reported that bone formation genes (SOST and RUNX2) and advanced glycation end-  
61 products (AGEs) were impaired in T2D. Thus, we investigated Wnt signaling regulation and its  
62 association with AGEs accumulation in T2D. We obtained bone tissue from 15 T2D and 21 non-  
63 diabetic postmenopausal women undergoing hip arthroplasty. Bone histomorphometry revealed a  
64 trend of low mineralized volume in T2D. We showed that gene expression of Wnt agonists LEF-  
65 1 and WNT10B were lower in T2D. Accordingly, WNT5A and SOST gene expression were  
66 higher, while collagen (COL1A1) was lower in T2D. Importantly, AGEs content was associated  
67 with SOST and WNT5A, but inversely correlated with LEF-1 and COL1A1. Finally, SOST was  
68 also associated with glycemic control and disease duration. These findings suggest that Wnt  
69 signaling and AGEs could be the main determinants of bone fragility in T2D.

70

## 71 **Introduction**

72 Type 2 diabetes (T2D) is a metabolic disease, with an increasing worldwide prevalence,  
73 characterized by chronic hyperglycemia and adverse effects on multiple organ systems, including  
74 bones [1]. Patients with T2D have an increased fracture risk, particularly at the hip, compared to  
75 individuals without diabetes. A recent meta-analysis reported that individuals with T2D have  
76 1.27 relative risk (RR) of hip fracture compared to non-diabetic controls [2]. Fragility fractures  
77 in patients with T2D occur at normal or even higher bone mineral density compared to healthy  
78 subjects, implying compromised bone quality in diabetes. T2D is associated with a reduced bone  
79 turnover[3], as shown by lower serum levels of biochemical markers of bone formation, such as

80 procollagen type1 amino-terminal propeptide (PINP) and osteocalcin, and bone resorption, C-  
81 terminal cross-linked telopeptide (CTX) in diabetic patients compared to nondiabetic  
82 individuals [4–7]. Accordingly, dynamic bone histomorphometry of T2D postmenopausal  
83 women showed a lower bone formation rate, mineralizing surface, osteoid surface, and  
84 osteoblast surface[8]. Our group recently demonstrated that T2D is also associated with  
85 increased *SOST* and decreased *RUNX2* genes expression, compared to non-diabetic subjects[9].  
86 Moreover, we have proved in a diabetic model that a sclerostin-resistant *Lrp5* mutation,  
87 associated with high bone mass, fully protected bone mass and strength even after prolonged  
88 hyperglycemia [10]. Sclerostin is a potent inhibitor of the canonical Wnt signaling pathway, a  
89 key pathway that regulates bone homeostasis [11]. Therefore, we hypothesize that impairment of  
90 Wnt pathway through increased sclerostin activity is responsible for low bone turnover and  
91 contributes to bone fragility in diabetes.

92 Diabetes and chronic hyperglycemia are also characterized by increased advanced glycation end-  
93 products (AGEs) production and deposition [12]. AGEs may interfere with osteoblast  
94 differentiation, attachment to the bone matrix, function, and survival [13,14]. AGEs also alter  
95 bone collagen structure and reduce the intrinsic toughness of bone, thereby affecting bone  
96 material properties [9,15,16]. In this work, we propose to dissect Wnt signaling in bone of  
97 individuals with T2D and to investigate its relationship with AGEs accumulation. Results  
98 confirmed that T2D downregulates Wnt beta/catenin signaling and reduces collagen mRNA  
99 levels, in association with AGEs accumulation.

## 100 **Materials and Methods**

### 101 **Study subjects**

102 We enrolled a total of 36 postmenopausal women (15 with T2D and 21 non-diabetic  
103 controls) undergoing hip arthroplasty for osteoarthritis, consecutively screened to participate in  
104 this study between 2020 and 2022. Diabetes status was confirmed by the treating diabetes  
105 physician. Participants were diagnosed with diabetes when they had fasting plasma glucose  
106 (FPG)  $\geq 126$  mg/dl or 2-h plasma glucose (2-h PG)  $\geq 200$  mg/dl during a 75-g oral glucose  
107 tolerance test (OGTT); or hemoglobin A1c (HbA1c)  $\geq 6.5\%$  in accordance with the American  
108 Diabetes Association diagnostic criteria. Eligible participants were  $< 65$  years of age. Exclusion  
109 criteria were any diseases affecting bone or malignancy. Additionally, individuals treated with  
110 medications affecting bone metabolism such as estrogen, raloxifene, tamoxifen,  
111 bisphosphonates, teriparatide, denosumab, thiazolidinediones, glucocorticoids, anabolic steroids,  
112 and phenytoin, and those with hypercalcemia or hypocalcemia, hepatic or renal disorder,  
113 hypercortisolism, current alcohol or tobacco use were excluded. The study was approved by the  
114 Ethics Committee of the Campus Bio-Medico University of Rome and all participants provided  
115 written informed consent.

## 116 **Specimen preparation**

117 Femoral head specimens were obtained during hip arthroplasty. As described previously [9],  
118 trabecular bone specimens were collected fresh and washed multiple times in sterile PBS until  
119 the supernatant was clear of blood. Bone samples were stored at  $-80$  °C until analysis.

## 120 **Bone histomorphometry**

121 Trabecular bone from femur heads were fixed in 10% neutral buffered formalin for 24 h and  
122 stored in 70% ethanol. Tissues were embedded in methylmethacrylate and sectioned by the  
123 Washington University Musculoskeletal Histology and Morphometry Core. Unstained and

124 TRAP-stained (Sigma) slides were imaged at  $\times 20$  high resolution using a NanoZoomer 2.0 with  
125 bright field and FITC/TRITC (Hamamatsu Photonics). Images were then analyzed via Bioquant  
126 Osteo software according to the manufacturer's instructions and published standards (v18.2.6,  
127 Bioquant Image Analysis Corp., Nashville, TN).

### 128 **RNA extraction and gene expression by RT-PCR**

129 Total RNA from trabecular bone samples was extracted using TRIzol (Invitrogen) following the  
130 manufacturer's instructions. The concentration and purity of the extracted RNA were assessed  
131 spectrophotometrically (TECAN, InfiniteM200PRO), and only samples with 260/280 absorbance  
132 ratio between 1.8 and 2 were used for reverse transcription using High-Capacity cDNA Reverse  
133 Transcription Kit (Applied Biosystems, Carlsbad, CA) according to the manufacturer's  
134 recommendations. Transcription products were amplified using TaqMan real-time PCR (Applied  
135 Biosystems, Carlsbad, CA) and a standard protocol (95°C for 10 minutes; 40 cycles of 95°C for  
136 15 seconds and 60°C for 1 minute; followed by 95°C for 15 seconds, 60°C for 15 seconds, and  
137 95°C for 15 seconds).  $\beta$ -Actin expression was used as an internal control (housekeeping gene).  
138 Relative expression levels of Sclerostin (SOST), Dickkopf-1 (DKK-1), Wnt ligands (WNT5a  
139 and WNT10b), T-cell factor/ lymphoid enhancer factor 1 (LEF-1), and collagen type I alpha 1  
140 chain (COL1A1) were calculated using the  $2^{-\Delta C_t}$  method.

### 141 **Statistical analysis**

142 Data were analyzed using GraphPad Prism 9.0 (GraphPad Software, San Diego, CA). Patients'  
143 characteristics were described using means and standard deviations or medians and interquartile  
144 ranges, as appropriate, and percentages. Group data are presented in boxplots with median and  
145 interquartile range; whiskers represent maximum and minimum values. Mann-Whitney test was

146 used to compare variables between groups. Data were analyzed using nonparametric Spearman  
147 correlation analysis and the correlation coefficients (r) were used to assess the relationship  
148 between variables.

## 149 **RESULTS**

### 150 **Subject characteristics**

151 Clinical characteristics of study subjects are presented in Table 1. T2D and non-diabetic subjects  
152 did not differ in age, BMI and menopausal age (table 1). As expected, fasting glucose was  
153 significantly higher in T2D compared to non-diabetic subjects [112.00 (Interquartile ranges-IQR  
154 26.00) mg/dl, vs. 94.00 (19.5) mg/dl, respectively;  $p=0.009$ ]. Median HbA1c was determined in  
155 all T2D subjects within three months before surgery [(6.95(0.90%)] (Table 1). Median disease  
156 duration in T2D subjects was [14.50(11.00)] years. Diabetes medications included monotherapy  
157 with metformin (n=12) and combination therapy with metformin plus insulin and glinide (n=3).  
158 There were no differences in serum calcium, creatinine and serum blood urea nitrogen (Table 1).

### 159 **Bone Histomorphometry**

160 Surgical samples from 8 T2D and 9 non-diabetic subjects were used for histomorphometry  
161 analysis. We found no significant differences in BV/TV and osteoid volume, while mineralized  
162 volume/total volume (Md.V/TV) trended lower in T2D subjects relative to controls [(0.249%  
163 (0.121) vs 0.352% (0.184);  $p=0.053$ ] (Table 2).

### 164 **Gene Expression**

165 *SOST* mRNA was significantly higher in T2D than in non-diabetic subjects (Fig. 1A,  $p<0.0001$ ),  
166 whereas there was no difference in *DKK1* gene expression between the two groups (Fig. 1B). Of

167 note, *SOST* mRNA transcript was very low in the majority of non-diabetic subjects (Fig. 1A).  
168 *LEF-1* (Fig. 1C,  $p=0.0136$ ), *WNT10B* (Fig. 1D,  $p=0.0302$ ) and *COL1A1* (Fig. 1F,  $p=0.0482$ )  
169 mRNA transcripts were significantly lower in T2D compared to non-diabetic subjects;  
170 Conversely, *WNT5A* was higher in T2D relative to non-diabetics (Fig. 1E,  $p=0.0232$ ).

171

## 172 **Correlation analysis**

173 As shown in figure 2, AGEs were inversely correlated with *LEF-1* (Fig. 2A,  $p=0.0255$ ) and  
174 *COL1A1* mRNA abundance (Fig. 2B,  $p=0.0004$ ), whereas they were positively correlated with  
175 *SOST* (Fig. 2C,  $p<0.0001$ ) and *WNT5A* mRNA (Fig. 2D,  $p=0.0322$ ). There was no correlation  
176 between AGEs content and *WNT10B* (Fig. 2E;  $p=0.1938$ ) or *DKK1* gene expression (Fig. 2F;  
177  $p=0.9349$ ). Likewise, we did not find any significant correlation between *LEF-1*, *WNT5A*,  
178 *WNT10B*, *DKK-1*, *COL1A1* expression in bone and glycemic control in T2D individuals  
179 (Supplemental Figure 1A-D). However, there were positive correlations between *SOST* and  
180 glycemic control (Figure 3A,  $p=0.0043$ ), *SOST* and disease duration (Figure 3B,  $p=0.00174$ ), and  
181 *WNT5A* and fasting glucose levels (Figure 3C,  $p=0.0037$ )

## 182 **Discussion**

183 We show that key components of the Wnt/beta-catenin signaling are abnormally expressed in the  
184 bone of postmenopausal women with T2D. *LEF-1*, a transcription factor that mediates responses  
185 to Wnt signal and Wnt target gene itself, and *WNT10B*, an endogenous regulator of Wnt/ $\beta$ -  
186 catenin signaling and skeletal progenitor cell fate, are both downregulated in bone of  
187 postmenopausal women with T2D. Consistently, expression of the Wnt inhibitor, *SOST* is  
188 increased, suggesting suppression of Wnt/ $\beta$ -catenin signaling in the bone of T2D individuals.



189 Interestingly, our data suggest that sclerostin expression is very low in healthy postmenopausal  
190 women not affected by osteoporosis. Our data also show that the expression of *WNT5A*, a non-  
191 canonical ligand linked to inhibition of Wnt/beta-catenin signaling was increased, whereas  
192 *COL1A1* was decreased. The latter finding is consistent with reduced bone formation and  
193 suppression of Wnt signaling in T2D. We have previously reported upregulation of *SOST* and  
194 downregulation of *RUNX2* mRNA in another cohort of postmenopausal women with T2D [9]. Of  
195 note, the cohort of T2D subjects studied here had glycated hemoglobin within therapeutic  
196 targets, implying that the changes in gene transcription we identified persist in T2D bone despite  
197 good glycemic control.

198 High circulating sclerostin has been reported in diabetes [17,18], and increased sclerostin is  
199 associated with fragility fractures [19]. Aside from confirming higher *SOST* expression, we also  
200 show that other Wnt/ $\beta$ -catenin osteogenic ligands are abnormally regulated in the bone of T2D  
201 postmenopausal women. *WNT10B* is a positive regulator of bone mass; transgenic  
202 overexpression in mice results in increased bone mass and strength [20], whereas genetic  
203 ablation of *Wnt10b* is characterized by reduced bone mass [21,22], and decreased number and  
204 function of osteoblasts [21]. More to the point, *Wnt10b* expression is reduced in the bone of  
205 diabetic mice [23]. Therefore, the reduced *WNT10B* in human bone we found in the present  
206 study further supports the hypothesis of reduced bone formation in T2D. Accordingly, *LEF-1*  
207 gene expression was also downregulated confirming that Wnt/beta-catenin pathway is decreased  
208 in T2D. Importantly, the overexpression of *LEF-1* induces the expression of osteoblast  
209 differentiation genes (osteocalcin and *COL1A1*) in differentiating osteoblasts [24]. In fact, in this  
210 study we also demonstrated that a downregulation of *LEF-1* in T2D bone goes along with a  
211 downregulation of *COL1A1*, strengthen data of a reduced production of bone matrix most likely

212 as the result of reduced osteoblasts synthetic activity in diabetes [8,25]. Reduced *RUNX2* in  
213 T2D postmenopausal women also confirms previous findings (PMID: 32777114)[9] and further  
214 supports the notion of reduced osteoblast differentiation or function in diabetes. On the other  
215 hand, the contribution of upregulated *WNT5A* in diabetic bone is more complex. *WNT5A*  
216 regulates Wnt/beta-catenin signaling depending on the receptor availability [26]. Non-canonical  
217 *WNT5A* activates  $\beta$ -catenin-independent signaling, including the Wnt/ $Ca^{++}$  [27] and planar cell  
218 polarity pathways [28]. Heterozygous *Wnt5a* null mice have low bone mass with impaired  
219 osteoblast and osteoclast differentiation [29]. *Wnt5a* inhibits *Wnt3a* protein by downregulating  
220 beta/catenin-induced reporter gene expression [26]. In line with these findings, we showed that  
221 there was an increased gene expression of *WNT5A* in bone of T2D postmenopausal women  
222 confirming a downregulated Wnt/beta-catenin signaling and impaired osteoblasts function.

223 We have previously shown that AGEs content is higher in T2D bone compared to non-diabetic  
224 bone, even in patients with well-controlled T2D [9]. Here we show that AGEs accumulation is  
225 positively correlated with *SOST* and *WNT5A* gene expression, and negatively correlated with  
226 *LEF-1*, *WNT10B*, and *COL1A1* mRNA. These findings are consistent with the hypothesis that  
227 AGEs accumulation is associated with impaired Wnt signaling and low bone turnover in T2D.  
228 We did not find any abnormalities in histomorphometric parameters in our subjects with T2D,  
229 consistent with our previous report [9]. Reduced osteoid thickness and osteoblast number were  
230 reported in premenopausal T2D women with poor glycemic control compared to non-diabetic  
231 subjects but not in the group with good glycemic control [30]. Therefore, good glycemic control  
232 appears to prevent or rescue any changes in static histologic parameters of bone turnover that  
233 might be caused by uncontrolled diabetes.

234 Our study has some limitations. One is the cross-sectional design; another one is the relatively  
235 small number of T2D subjects enrolled. Moreover, we measured the mRNA abundance of the  
236 genes of interest, and we cannot assume that the differences we found reflect differences in  
237 protein abundance. Although osteoarthritis may affect some of the genes we studied [31], all  
238 study subjects were affected by variable degree of osteoarthritis, and the effect of such potential  
239 confounder is not likely to be different between T2D and control subjects. Finally, we did not use  
240 the tetracycline double-labeled technique to investigate dynamic bone parameters.

241 The main strength of our study is that this study is the first to explore the association of AGEs on  
242 Wnt pathway in postmenopausal T2D women. Moreover, we measured the expression of several  
243 Wnt genes directly on bone samples of postmenopausal T2D women.

244 In conclusion, our data show that, despite good glycemic control, T2D decreases expression of  
245 COL1A1 and Wnt genes that regulate bone turnover, in association with increased AGEs  
246 content. These results may help understand the mechanisms underlying bone fragility in  
247 T2D.

248

## 249 **Acknowledgements**

250 This work was supported by an internal grant of Campus Bio-Medico University of Rome

251

252 **Author Contributions:** Conceptualization, N.N, R.P., M.M and R.S. ; methodology, G.L., F.C.,  
253 M.F., V.V., F.T., A.B., S.T.; software, G.L., C.P., A.B., and E.S.; validation, N.N. and G.L.;  
254 formal analysis, N.N. and G.L.; investigation, N.N., R.S., M.M. and R.P.; resources, N.N, G.V.,

255 R.P. M.M., and R.S.; data curation, G.L. and N.P.; writing—original draft preparation, G.L.,  
256 M.F., N.P., R.C. and N.N.; writing—review and editing, N.N., C.P., E.S., R.S. and R.C.;  
257 visualization, N.N. and R.S.; supervision, N.N., R.P., and M.M.; project administration, N.N.  
258 and G.L.; funding acquisition, N.N. and R.S. All authors have read and agreed to the published  
259 version of the manuscript.

260

## 261 **References**

- 262 [1] Hofbauer LC, Busse B, Eastell R, Ferrari S, Frost M, Müller R, et al. Bone fragility in  
263 diabetes: novel concepts and clinical implications. *Lancet Diabetes Endocrinol*  
264 2022;10:207–20. [https://doi.org/10.1016/S2213-8587\(21\)00347-8](https://doi.org/10.1016/S2213-8587(21)00347-8).
- 265 [2] Wang H, Ba Y, Xing Q, Du J-L. Diabetes mellitus and the risk of fractures at specific  
266 sites: a meta-analysis. *BMJ Open* 2019;9:e024067. [https://doi.org/10.1136/bmjopen-2018-](https://doi.org/10.1136/bmjopen-2018-024067)  
267 024067.
- 268 [3] Rubin MR, Patsch JM. Assessment of bone turnover and bone quality in type 2 diabetic  
269 bone disease: current concepts and future directions. *Bone Res* 2016;4:16001.  
270 <https://doi.org/10.1038/boneres.2016.1>.
- 271 [4] Napoli N, Strollo R, Defeudis G, Leto G, Moretti C, Zampetti S, et al. Serum Sclerostin  
272 and Bone Turnover in Latent Autoimmune Diabetes in Adults. *J Clin Endocrinol Metab*  
273 2018;103:1921–8. <https://doi.org/10.1210/jc.2017-02274>.
- 274 [5] Hygum K, Starup-Linde J, Harsløf T, Vestergaard P, Langdahl BL. MECHANISMS IN  
275 ENDOCRINOLOGY: Diabetes mellitus, a state of low bone turnover - a systematic

- 276 review and meta-analysis. *Eur J Endocrinol* 2017;176:R137–57.
- 277 <https://doi.org/10.1530/EJE-16-0652>.
- 278 [6] Starup-Linde J, Vestergaard P. Biochemical bone turnover markers in diabetes mellitus -  
279 A systematic review. *Bone* 2016;82:69–78. <https://doi.org/10.1016/j.bone.2015.02.019>.
- 280 [7] Starup-Linde J, Lykkeboe S, Gregersen S, Hauge E-M, Langdahl BL, Handberg A, et al.  
281 Differences in biochemical bone markers by diabetes type and the impact of glucose.  
282 *Bone* 2016;83:149–55. <https://doi.org/10.1016/j.bone.2015.11.004>.
- 283 [8] Manavalan JS, Cremers S, Dempster DW, Zhou H, Dworakowski E, Kode A, et al.  
284 Circulating osteogenic precursor cells in type 2 diabetes mellitus. *J Clin Endocrinol Metab*  
285 2012;97:3240–50. <https://doi.org/10.1210/jc.2012-1546>.
- 286 [9] Piccoli A, Cannata F, Strollo R, Pedone C, Leanza G, Russo F, et al. Sclerostin  
287 Regulation, Microarchitecture, and Advanced Glycation End-Products in the Bone of  
288 Elderly Women With Type 2 Diabetes. *J Bone Miner Res* 2020;35:2415–22.  
289 <https://doi.org/10.1002/jbmr.4153>.
- 290 [10] Leanza G, Fontana F, Lee S-Y, Remedi MS, Schott C, Ferron M, et al. Gain-of-Function  
291 Lrp5 Mutation Improves Bone Mass and Strength and Delays Hyperglycemia in a Mouse  
292 Model of Insulin-Deficient Diabetes. *J Bone Miner Res* 2021;36:1403–15.  
293 <https://doi.org/10.1002/jbmr.4303>.
- 294 [11] Maeda K, Kobayashi Y, Koide M, Uehara S, Okamoto M, Ishihara A, et al. The  
295 Regulation of Bone Metabolism and Disorders by Wnt Signaling. *Int J Mol Sci* 2019;20.  
296 <https://doi.org/10.3390/ijms20225525>.

- 297 [12] Tan KCB, Chow W-S, Ai VHG, Metz C, Bucala R, Lam KSL. Advanced glycation end  
298 products and endothelial dysfunction in type 2 diabetes. *Diabetes Care* 2002;25:1055–9.  
299 <https://doi.org/10.2337/diacare.25.6.1055>.
- 300 [13] Kume S, Kato S, Yamagishi S, Inagaki Y, Ueda S, Arima N, et al. Advanced glycation  
301 end-products attenuate human mesenchymal stem cells and prevent cognate differentiation  
302 into adipose tissue, cartilage, and bone. *J Bone Miner Res* 2005;20:1647–58.  
303 <https://doi.org/10.1359/JBMR.050514>.
- 304 [14] Sanguineti R, Storace D, Monacelli F, Federici A, Odetti P. Pentosidine effects on human  
305 osteoblasts in vitro. *Ann N Y Acad Sci* 2008;1126:166–72.  
306 <https://doi.org/10.1196/annals.1433.044>.
- 307 [15] Yamamoto M, Sugimoto T. Advanced Glycation End Products, Diabetes, and Bone  
308 Strength. *Curr Osteoporos Rep* 2016;14:320–6. [https://doi.org/10.1007/s11914-016-0332-](https://doi.org/10.1007/s11914-016-0332-1)  
309 1.
- 310 [16] Furst JR, Bandeira LC, Fan W-W, Agarwal S, Nishiyama KK, McMahon DJ, et al.  
311 Advanced Glycation Endproducts and Bone Material Strength in Type 2 Diabetes. *J Clin*  
312 *Endocrinol Metab* 2016;101:2502–10. <https://doi.org/10.1210/jc.2016-1437>.
- 313 [17] García-Martín A, Rozas-Moreno P, Reyes-García R, Morales-Santana S, García-Fontana  
314 B, García-Salcedo JA, et al. Circulating levels of sclerostin are increased in patients with  
315 type 2 diabetes mellitus. *J Clin Endocrinol Metab* 2012;97:234–41.  
316 <https://doi.org/10.1210/jc.2011-2186>.
- 317 [18] Gennari L, Merlotti D, Valenti R, Ceccarelli E, Ruvio M, Pietrini MG, et al. Circulating  
318 sclerostin levels and bone turnover in type 1 and type 2 diabetes. *J Clin Endocrinol Metab*

- 319 2012;97:1737–44. <https://doi.org/10.1210/jc.2011-2958>.
- 320 [19] Yamamoto M, Yamauchi M, Sugimoto T. Elevated sclerostin levels are associated with  
321 vertebral fractures in patients with type 2 diabetes mellitus. *J Clin Endocrinol Metab*  
322 2013;98:4030–7. <https://doi.org/10.1210/jc.2013-2143>.
- 323 [20] Longo KA, Wright WS, Kang S, Gerin I, Chiang S-H, Lucas PC, et al. Wnt10b inhibits  
324 development of white and brown adipose tissues. *J Biol Chem* 2004;279:35503–9.  
325 <https://doi.org/10.1074/jbc.M402937200>.
- 326 [21] Bennett CN, Longo KA, Wright WS, Suva LJ, Lane TF, Hankenson KD, et al. Regulation  
327 of osteoblastogenesis and bone mass by Wnt10b. *Proc Natl Acad Sci U S A*  
328 2005;102:3324–9. <https://doi.org/10.1073/pnas.0408742102>.
- 329 [22] Kubota T, Michigami T, Ozono K. Wnt signaling in bone metabolism. *J Bone Miner*  
330 *Metab* 2009;27:265–71. <https://doi.org/10.1007/s00774-009-0064-8>.
- 331 [23] Zhang J, Motyl KJ, Irwin R, MacDougald OA, Britton RA, McCabe LR. Loss of Bone  
332 and Wnt10b Expression in Male Type 1 Diabetic Mice Is Blocked by the Probiotic  
333 *Lactobacillus reuteri*. *Endocrinology* 2015;156:3169–82.  
334 <https://doi.org/10.1210/EN.2015-1308>.
- 335 [24] Hoepfner LH, Secreto F, Jensen ED, Li X, Kahler RA, Westendorf JJ. Runx2 and bone  
336 morphogenic protein 2 regulate the expression of an alternative Lef1 transcript during  
337 osteoblast maturation. *J Cell Physiol* 2009;221:480–9. <https://doi.org/10.1002/jcp.21879>.
- 338 [25] Khan MP, Singh AK, Joharapurkar AA, Yadav M, Shree S, Kumar H, et al.  
339 Pathophysiological Mechanism of Bone Loss in Type 2 Diabetes Involves Inverse

- 340 Regulation of Osteoblast Function by PGC-1 $\alpha$  and Skeletal Muscle Atrogenes: AdipoR1  
341 as a Potential Target for Reversing Diabetes-Induced Osteopenia. *Diabetes* 2015;64:2609–  
342 23. <https://doi.org/10.2337/db14-1611>.
- 343 [26] Mikels AJ, Nusse R. Purified Wnt5a protein activates or inhibits beta-catenin-TCF  
344 signaling depending on receptor context. *PLoS Biol* 2006;4:e115.  
345 <https://doi.org/10.1371/journal.pbio.0040115>.
- 346 [27] Dejmek J, Säfholm A, Kamp Nielsen C, Andersson T, Leandersson K. Wnt-5a/Ca<sup>2+</sup>-  
347 induced NFAT activity is counteracted by Wnt-5a/Yes-Cdc42-casein kinase 1alpha  
348 signaling in human mammary epithelial cells. *Mol Cell Biol* 2006;26:6024–36.  
349 <https://doi.org/10.1128/MCB.02354-05>.
- 350 [28] Oishi I, Suzuki H, Onishi N, Takada R, Kani S, Ohkawara B, et al. The receptor tyrosine  
351 kinase Ror2 is involved in non-canonical Wnt5a/JNK signalling pathway. *Genes Cells*  
352 2003;8:645–54. <https://doi.org/10.1046/j.1365-2443.2003.00662.x>.
- 353 [29] Maeda K, Kobayashi Y, Udagawa N, Uehara S, Ishihara A, Mizoguchi T, et al. Wnt5a-  
354 Ror2 signaling between osteoblast-lineage cells and osteoclast precursors enhances  
355 osteoclastogenesis. *Nat Med* 2012;18:405–12. <https://doi.org/10.1038/nm.2653>.
- 356 [30] Andrade VFC, Chula DC, Sabbag FP, Cavalheiro DD da S, Bavia L, Ambrósio AR, et al.  
357 Bone Histomorphometry in Young Patients With Type 2 Diabetes is Affected by Disease  
358 Control and Chronic Complications. *J Clin Endocrinol Metab* 2020;105.  
359 <https://doi.org/10.1210/clinem/dgz070>.
- 360 [31] Weivoda MM, Youssef SJ, Oursler MJ. Sclerostin expression and functions beyond the  
361 osteocyte. *Bone* 2017;96:45–50. <https://doi.org/10.1016/j.bone.2016.11.024>.



362

363 **Table 1.** Clinical features of the study subjects

	<b>T2D subjects</b>	<b>Non-diabetic</b>	<b>P value</b>
	<b>(n=15)</b>	<b>subjects</b>	
		<b>(n=21)</b>	
Age (years)	73.00 (13.00)	73.00 (10.50)	0.644
BMI (kg/m <sup>2</sup> )	30.81 (9.56)	25.00 (7.50)	0.117
Menopausal age (years)	50.00 (10.25)	52.00 (5.00)	0.344
Fasting glucose levels (mg/dl)	112.00 (26.00)	94.00 (19.05)	**0.009
Disease duration (years)	14.50 (11.00)	-	-
HbA1c (%)	6.95 (0.90)	-	-
Serum calcium (mg/dl)	9.05 (0.75)	9.15 (0.55)	0.535
Creatinine (mg/dl)	0.730 (0.39)	0.780 (0.23)	0.919
Serum blood urea nitrogen (mg/dl)	42.00(17.00)	37.00 (14.75)	0.235

364

365 **Table 1.** Results were analyzed using unpaired T-test with Welch's correction. Results are  
366 presented as median and interquartile ranges (IQR).

367

368

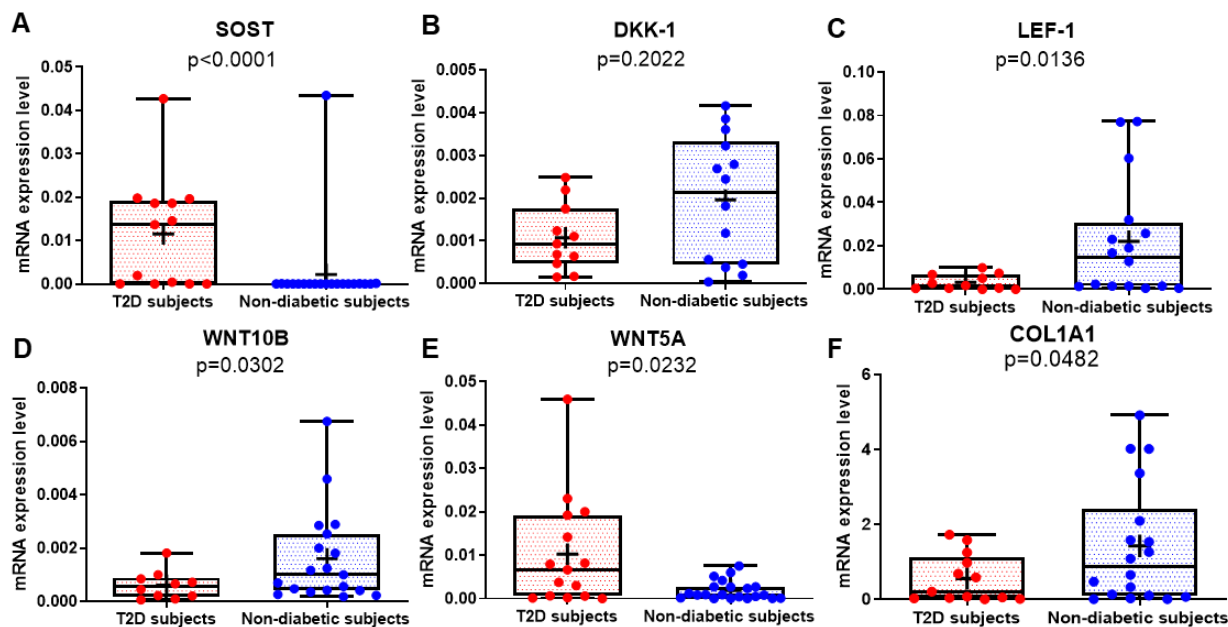
369 **Table 2.** Histomorphometric parameters of trabecular bone of the study subjects

	<b>T2D subjects (n=8)</b>	<b>Non-diabetic subjects (n=9)</b>	<b>P value</b>
BV/TV (%)	0.248 (0.249)	0.358 (0.184)	0.120
Md.V/BV (%)	0.994(0.014)	0.995 (0.013)	0.998
Md.V/TV (%)	0.249 (0.210)	0.352 (0.184)	0.053
OV/BV (%)	0.009 (0.013)	0.004 (0.012)	0.704
OV/TV (%)	0.001 (0.005)	0.001 (0.005)	0.896
OS/BS (%)	0.026 (0.018)	0.035 (0.139)	0.525

370

371 **Table 2.** Results were analyzed using unpaired T-test with Welch's correction and are presented  
372 as median and interquartile ranges (IQR).

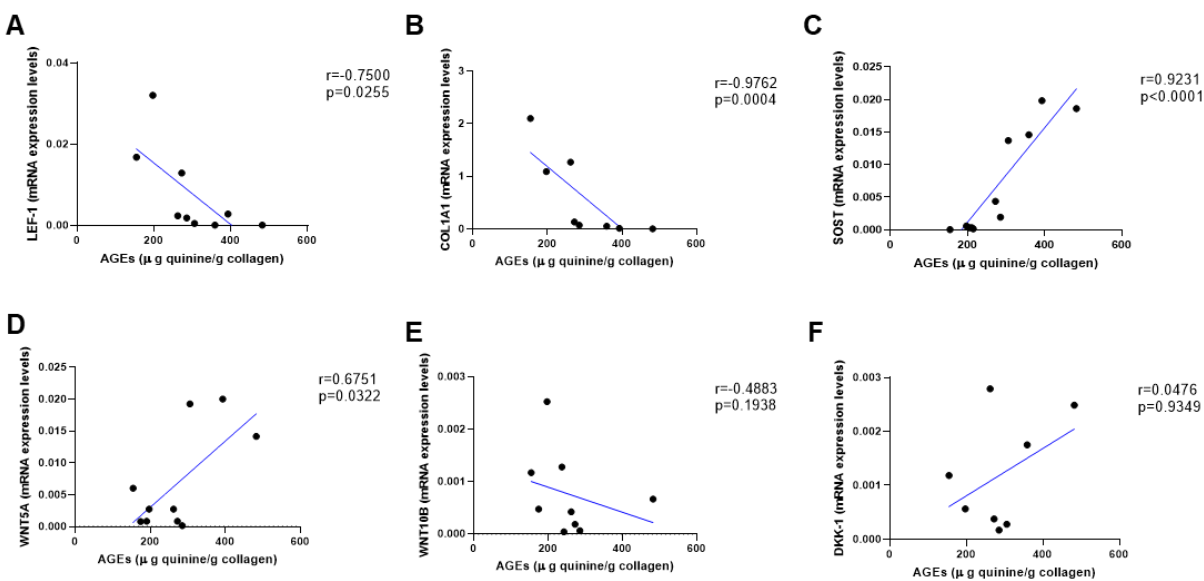
373 **Figure 1.**



374

375

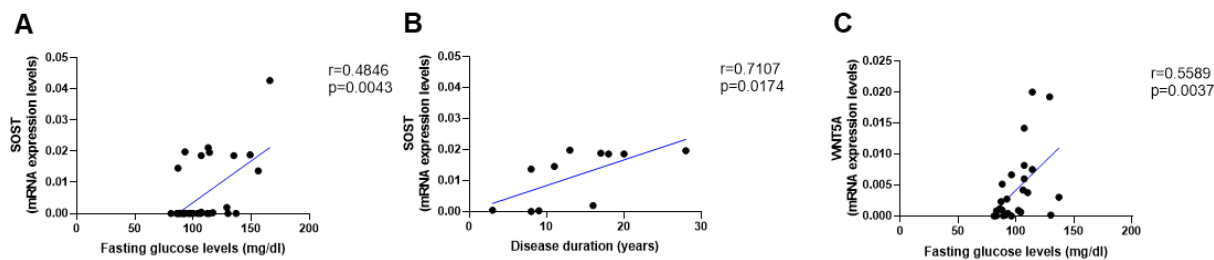
376 **Figure 2.**



377

378

379 **Figure 3.**



380

381 **Figure Legends**

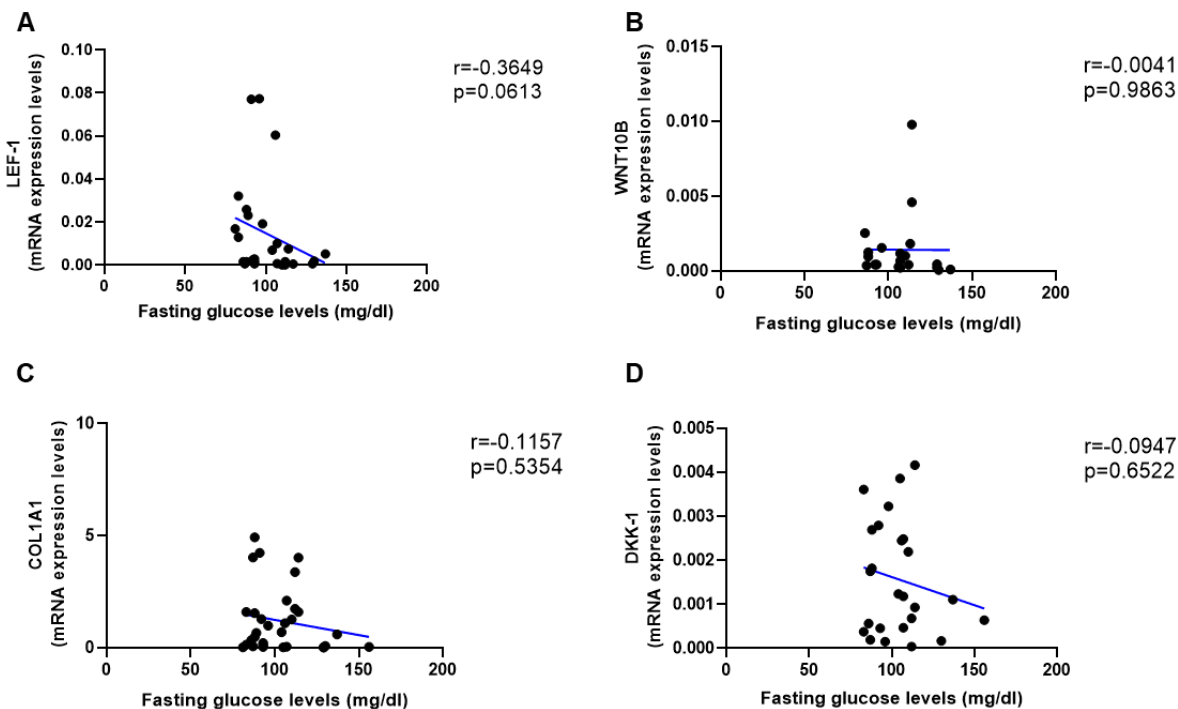
382 **Figure 1.** Gene expression analysis in trabecular bone samples. (A) SOST mRNA levels resulted  
383 higher in T2D subjects versus Nondiabetic subjects ( $p < 0.0001$ ). (B) DKK-1 mRNA expression  
384 level was not different between groups ( $p = 0.2022$ ). (C) LEF-1 mRNA levels resulted lower in  
385 T2D subjects versus nondiabetics subjects ( $p = 0.0136$ ). (D) WNT10B mRNA expression level  
386 was lower in T2D subjects versus nondiabetic subjects ( $p = 0.0302$ ). (E) WNT5A mRNA resulted  
387 higher in T2D subjects versus nondiabetics subjects ( $p = 0.0232$ ). (F) COL1A1 mRNA levels  
388 resulted lower in T2D subjects versus Nondiabetic subjects ( $p = 0.0482$ ). Data are expressed as  
389 logarithmic scale. Medians and interquartile ranges, differences between non-diabetics and T2D  
390 subjects were analyzed using Mann-Whitney test.

391 **Figure 2.** Relationship between AGEs ( $\mu\text{g}$  quinine/g collagen) bone content and mRNA level of  
392 the Wnt signaling key genes in T2D and non-diabetic subjects. (A) LEF-1 negatively correlated  
393 with AGEs ( $r = -0.7500$ ;  $p = 0.0255$ ). (B) COL1A1 negatively correlated with AGEs ( $r = -0.9762$ ;  
394  $p = 0.0004$ ). (C) SOST mRNA level expression positively correlated with AGEs ( $r = 0.9231$ ;  
395  $p < 0.0001$ ). (D) WNT5A mRNA expression level positively correlated with AGEs ( $r = 0.6751$ ;  
396  $p = 0.0322$ ). (E) WNT10B mRNA expression level was not correlated with AGEs ( $r = -0.4883$ ;  
397  $p = 0.1938$ ). (F) DKK1 mRNA expression level was not correlated with AGEs ( $r = 0.0476$ ;

398  $p=0.9349$ ). Data were analyzed using nonparametric Spearman correlation analysis and  $r$   
399 represents the correlation coefficient.

400 **Figure 3.** Relationship between fasting glucose levels (mg/dl) and disease duration with SOST  
401 and WNT5A mRNA levels. (A) SOST positively correlated with fasting glucose levels  
402 ( $r=0.4846$ ;  $p=0.0043$ ). (B) SOST positively correlated with disease duration ( $r=0.7107$ ;  
403  $p=0.0174$ ). (C) WNT5A positively correlated with fasting glucose levels ( $r=0.5589$ ;  $p=0.0037$ ).  
404 Data were analyzed using nonparametric Spearman correlation analysis and  $r$  represents the  
405 correlation coefficient.

406 **Supplementary figure 1.**



407

408

409

410 **Legend of supplementary figures**

411 **Supplementary figure 1.** Relationship between fasting glucose levels (mg/dl) and LEF-1,

412 WNT5A, WNT10B, DKK-1, COL1A1 mRNA levels. (A-E) Data showed no correlation

413 between fasting glucose levels (mg/dl) and (A) LEF-1 ( $r=-0.3649$ ;  $p=0.0613$ ), (B) WNT10B ( $r=-$

414  $0.0041$ ;  $p=0.9863$ ), (C) COL1A1 ( $r=-0.1157$ ;  $p=0.5354$ ), (D) DKK-1 ( $r=-0.0947$ ;  $p=0.6522$ )

415 mRNA levels. Data were analyzed using nonparametric Spearman correlation analysis and r

416 represents the correlation coefficient.

417

418

419

420

421

422

423

424

425

426

427

428