

A digital biomarker for aortic stenosis development and progression using deep learning for two-dimensional echocardiography

Evangelos K. Oikonomou MD DPhil^a, Gregory Holste BA^{a,b}, Neal Yuan MD^{c,d}, Andreas Coppi PhD^e, Robert L. McNamara MD MHS^a, Norrissa Haynes MD MPH^a, Amit N. Vora MD MPH^a, Eric J. Velazquez MD^a, Fan Li PhD^{f,g}, Venu Menon MD^h, Samir R. Kapadia MD FACC FAHA^h, Thomas M Gill MDⁱ, Girish N. Nadkarni MD MPH^{j,k}, Harlan M. Krumholz MD SM^{a,e}, Zhangyang Wang PhD^b, David Ouyang MD^{l,m}, Rohan Khera MD MS^{a,e,n,o}

^a Section of Cardiovascular Medicine, Department of Internal Medicine, Yale School of Medicine, New Haven, CT, USA

^b Department of Electrical and Computer Engineering, The University of Texas at Austin, Austin, TX, USA

^c Department of Medicine, University of California San Francisco, San Francisco, CA, USA

^d Division of Cardiology, San Francisco Veterans Affairs Medical Center, San Francisco, CA, USA

^e Center for Outcomes Research and Evaluation, Yale-New Haven Hospital, New Haven, CT, USA

^f Department of Biostatistics, Yale School of Public Health, New Haven, CT, USA

^g Center for Methods in Implementation and Prevention Science, Yale School of Public Health, New Haven, CT, USA

^h Department of Cardiovascular Medicine, Heart and Vascular Institute, Cleveland Clinic Foundation, Cleveland, OH, USA.

ⁱ Section of Geriatrics, Department of Internal Medicine, Yale School of Medicine, New Haven, CT, USA.

^j The Charles Bronfman Institute for Personalized Medicine, Icahn School of Medicine at Mount Sinai, New York, NY, USA

^k Division of Nephrology, Department of Medicine, Icahn School of Medicine at Mount Sinai, New York, NY, USA

^l Department of Cardiology, Smidt Heart Institute, Cedars-Sinai Medical Center, Los Angeles, CA, USA

^m Division of Artificial Intelligence in Medicine, Cedars-Sinai Medical Center, Los Angeles, CA, USA

ⁿ Section of Biomedical Informatics and Data Science, Yale School of Medicine, New Haven, CT

^o Section of Health Informatics, Department of Biostatistics, Yale School of Public Health, New Haven, CT

Manuscript type: Original investigation

Total word count: 4830 words (including references and figure legends)

Figures: 5; **Tables:** 2

Funding: This study was supported by the grant K23HL153775 (RK) from the National Heart, Lung, and Blood Institute of the National Institutes of Health and award 2022060 (RK) from the Doris Duke Charitable Foundation. TMG is supported by P30AG021342. The funders had no role in the design and conduct of the study; collection, management, analysis, and interpretation of the data; preparation, review, or approval of the manuscript; and decision to submit the manuscript for publication.

Disclosures on page 2

Address for correspondence:

Rohan Khera, MD, MS

195 Church St, 6th Floor, New Haven, CT 06510

203-764-5885; rohan.khera@yale.edu; @rohan_khera

Disclosures:

E.K.O. is a co-inventor of the U.S. Patent Applications 63/508,315 & 63/177,117 and has served as a consultant to Caristo Diagnostics Ltd (all outside the current work). R.K. is an Associate Editor of JAMA, receives research support, through Yale, from Bristol-Myers Squibb and Novo Nordisk. He is a coinventor of U.S. Provisional Patent Applications 63/177,117, 63/428,569, 63/346,610, 63/484,426, and 63/508,315 (all outside the current work). R.K. and E.K.O. are co-founders of Evidence2Health, a health analytics company. A.N.V. reports a consultancy with Medtronic. H.M.K. works under contract with the Centers for Medicare & Medicaid Services to support quality measurement programs, was a recipient of a research grant from Johnson & Johnson, through Yale University, to support clinical trial data sharing; was a recipient of a research agreement, through Yale University, from the Shenzhen Center for Health Information for work to advance intelligent disease prevention and health promotion; collaborates with the National Center for Cardiovascular Diseases in Beijing; receives payment from the Arnold & Porter Law Firm for work related to the Sanofi clopidogrel litigation, from the Martin Baughman Law Firm for work related to the Cook Celect IVC filter litigation, and from the Siegfried and Jensen Law Firm for work related to Vioxx litigation; chairs a Cardiac Scientific Advisory Board for UnitedHealth; was a member of the IBM Watson Health Life Sciences Board; is a member of the Advisory Board for Element Science, the Advisory Board for Facebook, and the Physician Advisory Board for Aetna; and is the co-founder of Hugo Health, a personal health information platform, and co-founder of Refactor Health, a healthcare AI-augmented data management company. All other authors declare no competing interests.

ABSTRACT

Background: The timely identification of aortic stenosis (AS) and disease stage that merits intervention requires frequent echocardiography. However, there is no strategy to personalize the frequency of monitoring needed. **Objectives:** To explore the role of AI-enhanced two-dimensional-echocardiography in stratifying the risk of AS development and progression. **Methods:** This was a multicenter study of 12,609 patients without severe AS undergoing transthoracic echocardiography in New England (n=8,798, 71 [IQR 60-80] years, n=4250 [48.3%] women) & Cedars-Sinai, California (n=3,811, 67 [IQR 54-78] years, 1688 [44.3%] women). We examined the association of an AI-derived Digital AS Severity index (DASSi; range 0-1) with i) longitudinal changes in peak aortic valve velocity (AV V_{max} ; m/sec/year), and ii) all-cause mortality or aortic valve replacement (AVR) incidence, using multivariable generalized linear and Cox regression models, respectively, adjusted for age, sex, race/ethnicity, and baseline echocardiographic measurements. **Results:** The median follow-up was 4.1 [IQR 2.3-5.4] (New England) and 3.8 [IQR 3.1-4.4] years (Cedars-Sinai). Within each cohort, higher baseline DASSi was independently associated with faster progression rates in AV V_{max} (for each 0.1 increment: +0.033 m/s/year [95%CI: 0.028-0.038, $p<0.001$], n=5,483 & +0.082 m/s/year [95%CI 0.053-0.111], $p<0.001$, n=1,292, respectively). Furthermore, there was a dose-response association between higher baseline DASSi and the incidence of death/AVR (adj. HR 1.10 [95%CI: 1.08-1.13], $p<0.001$ & 1.14 [95%CI 1.09-1.20], $p<0.001$, respectively). Results were consistent across severity strata, including those without hemodynamically significant AS at baseline. **Conclusions:** An AI model built for two-dimensional-echocardiography can stratify the risk of AS progression, with implications for longitudinal monitoring in the community.

CONDENSED ABSTRACT

In this multi-center cohort study of 12,609 patients with no, mild or moderate aortic stenosis (AS), we explored whether a deep learning-enhanced method that relies on single-view, two-dimensional videos without Doppler can stratify the risk of AS development and progression. Video-based phenotyping based on the digital AS severity index (DASSi) identified patient subgroups with distinct echocardiographic and clinical trajectories independent of the baseline AS stage and profile. The results were consistent across two geographically distinct cohorts and key clinical subgroups, supporting the use of deep learning-enhanced two-dimensional echocardiography as a supplement to the traditional assessment of AS in the community.

KEYWORDS: machine learning, deep learning, artificial intelligence, echocardiography, aortic stenosis, risk prediction

ABBREVIATIONS:

AI: artificial intelligence

AV: aortic valve

AV V_{\max} : peak aortic valve (aortic jet) velocity

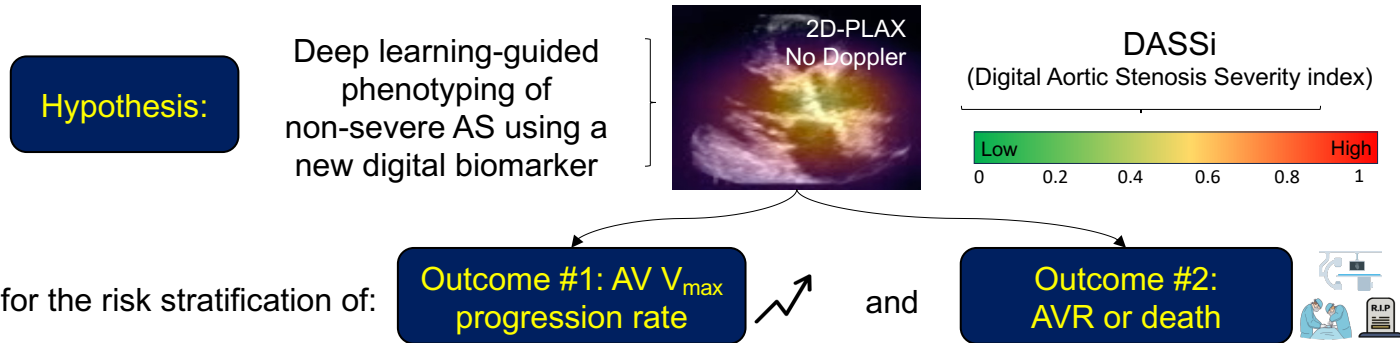
AVR: aortic valve replacement

DL: deep learning

DASSi: Digital Aortic Stenosis Severity index

HR: hazard ratio

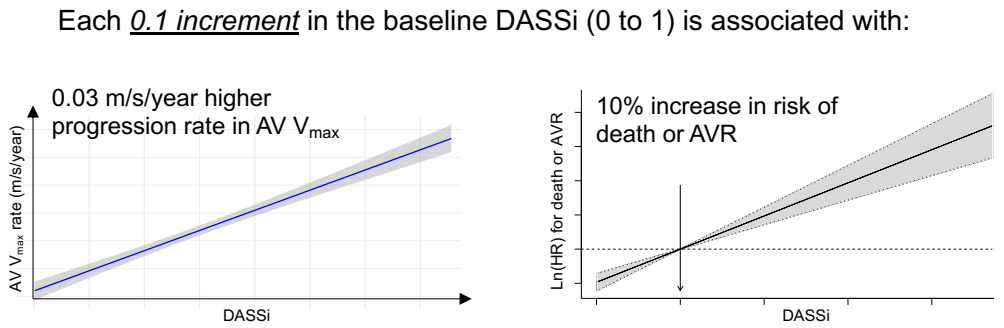

LVEF: left ventricular ejection fraction



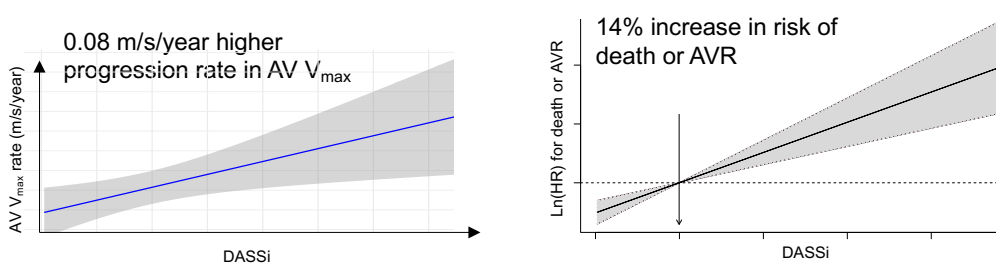
across two distinct cohorts:



New England cohort
(2015-2022)
N=8,798 pts
Follow-up: 4.1 [2.3-5.4] years

Cedars-Sinai cohort
(2018-2019)
N=3,811 pts
Follow-up: 3.8 [3.1-4.4] years



Central Illustration.

INTRODUCTION

With the expanding availability of transcatheter and surgical aortic valve replacement (AVR) procedures that effectively modify the natural history of AS (1–4), focus has shifted to the timely identification of patients at earlier stages of the disease who are at risk of rapid progression and worse clinical outcomes (5–8). Unfortunately, efforts to improve risk stratification of early AS have been limited by an incomplete understanding of the specific drivers of disease progression in each individual (9,10). Furthermore, longitudinal monitoring requires comprehensive Doppler echocardiography which may not be a cost-effective monitoring strategy for all patients with early aortic sclerosis and stenosis (11–13).

We have recently developed a deep learning (DL) strategy that learns key representation of severe AS on single-view, two-dimensional echocardiographic videos of the parasternal long axis (PLAX), a standard and easy-to-obtain echocardiographic view without the need for Doppler imaging (14). The predicted phenotype score from this model, the Digital AS Severity index (DASSi), demonstrated excellent performance across temporally and geographically distinct cohorts and identified generalizable features of valvular and myocardial remodeling in addition to diastolic dysfunction that spanned all AS disease stages (14). In the present study, we hypothesized that, as a model developed to identify the echocardiographic signature of the severe AS phenotype, DASSi would carry prognostic value among individuals without severe AS, stratifying the risk of echocardiographic and clinical progression independent of traditional Doppler parameters. We used data from two large, multi-hospital, observational cohorts across the U.S. to compare the rates of AS development and progression by echocardiography as well as adverse clinic events, namely death or AVR, across DASSi strata spanning a range of patient phenotypes from no to early, mild, and moderate AS.

METHODS

Study Population and Data Source: This was a multi-center retrospective cohort study of patients without severe AS (no, mild or moderate AS) who underwent clinically indicated echocardiography for any indication and were followed longitudinally within their respective health systems. Eligible participants were drawn from two hospital networks in New England (Yale-New Haven Health) and California (Cedars-Sinai Medical Center) with a baseline echocardiogram performed between 2015 and 2022 (**Figure 1**). Within each system, eligible patients were used to define two nested cohorts: (1) A *longitudinal echocardiography cohort* of individuals who underwent transthoracic echocardiography at two or more timepoints to assess the correlation of DASSi at baseline with longitudinal changes in Doppler-defined AS severity, and (2) a *clinical outcomes cohort* which included all individuals who had longitudinal follow-up for a composite clinical outcome of all-cause mortality and/or AVR.

New England cohort (Yale-New Haven Health network): We identified individuals who had undergone an echocardiogram during 2015 and 2022 at one of five Yale-affiliated hospitals across New England (Yale-New Haven, Bridgeport, Lawrence & Memorial and Greenwich Hospitals in Connecticut, USA, & Westerly Hospital in Rhode Island, USA) or one of the affiliated outpatient sites. Eligible individuals had i) baseline peak aortic valve velocity (AV Vmax) of less than 4 m/sec, ii) no prior history of AVR, and iii) echocardiographic studies that included PLAX videos available for processing. To ensure a broad representation of early AS phenotypes in the evaluation of the prognostic role of DASSi, we specifically oversampled mild and moderate AS cases (details of the cohort composition are included in the *Supplement*).

Furthermore, to avoid bias in our models, we ensured that none of the patients who contributed to the training set of the original model development was included in the study (14,15). In summary, we included 8,798 unique patients in the analysis.

Cedars-Sinai cohort: For further testing in an additional geographically distinct cohort, we retrieved transthoracic echocardiograms performed at the Cedars-Sinai Medical Center (Los Angeles, California, USA) between 1 January 2018 and 31 December 2019. We excluded studies with prosthetic aortic valves and then sampled 4,000 TTEs at random (14). After applying the same criteria as the New England cohort, 3,817 individuals with baseline TTE were included in the study. Further information on the cohort definition is provided in the *Supplement*.

Echocardiogram Interpretation: All studies were performed by trained sonographers or cardiologists and reported by cardiologists board-certified in echocardiography. These reports were a part of routine clinical care in accordance with the recommendations of the American Society of Echocardiography (11,16). The presence of AS severity was adjudicated based on the original echocardiographic report. Further details on the measurements obtained are presented in the *Supplement*.

DASSi calculation: Our algorithm provides a numerical probability of severe AS phenotype ranging from 0 (lowest probability of severe AS phenotype) to 1 (highest probability of severe AS phenotype). The deployment of the model involves the input of a full echocardiographic study, which is de-identified, down-sampled, and then processed for automated view classification to identify the specific videos from each study that correspond to PLAX views. The down-sampled 16-frame clips extracted from 2D PLAX videos are processed in a 3D-

ResNet18 network architecture trained to detect severe AS, and predictions are based on an ensemble of three models with a combination of three initializations: random, Kinetics-400, and self-supervised learning for echocardiograms (17). Model-specific study-level predictions represent the average predictions across all PLAX videos in a study for a given model. Finally, study-level predictions are averaged to form an ensemble, with the output (DASSi) reflecting the probability (from 0 to 1) of a severe AS phenotype across all videos of a given study. Further information on the method development as well as the use of self-supervised learning for echocardiographic model training have been previously reported (14,17). We computed DASSi for those echocardiograms without evidence of severe AS at baseline, spanning cases without AS, aortic sclerosis but no stenosis, as well as mild and moderate AS. Of note, DASSi can be calculated using any PLAX video as input independent of the vendor and hardware used to acquire the images (14).

Definition of outcomes: The *primary echocardiographic outcome* of the study was defined as the annualized rate of change in the AV V_{\max} , reported in m/s/year. For this, we calculated the rate of change for each pair of consecutive studies for the same patient. If three or more studies were present, we calculated the rate of change as the coefficient of a univariate ordinary least squares regression model of time against AV V_{\max} . To avoid the effect of extreme outliers we did not exclude any cases, but rather winsorized the average rate of change to no less than -1 m/sec/year and no more than +2 m/sec/year, based on previously reported ranges (18). We purposefully chose this over the aortic valve area or mean gradient, given that the latter two indices are not consistently reported in patients with no or borderline Doppler findings for AS (missing in 36.8% and 29.0% of our cohort, respectively). To account for variability in the

Doppler angle or flow states across studies, we also calculated the peak velocity ratio, defined as the ratio of the peak velocity in the left ventricular outflow tract (LVOT V_{max}) to the AV V_{max}. A secondary echocardiographic outcome was defined as the time to the next or higher severity stage on follow-up echocardiography (e.g., no AS to mild/moderate/severe, mild to moderate/severe and moderate to severe).

The *primary clinical outcome* of time-to-all-cause mortality or AVR was adjudicated by reviewing the linked institutional electronic health records which included the date of death and dates of relevant procedures. For the New England cohort, outcomes were assessed until April 18, 2023. AVR was defined based on procedure codes corresponding to percutaneous or open AVR with any valve type or valvuloplasty/aortic valve dilation, excluding procedures done within 90 days of the baseline TTE (see *Supplement*). Death reports spanned both in-hospital and out-of-hospital deaths were obtained from the vital statistics log maintained by the health system, drawn from social security administration and state vital statistic records. In the Cedars-Sinai cohort, mortality data were available until January 1, 2023, whereas transcatheter-only AVR data were available until 5/24/2022.

Statistical Methods: Categorical variables are summarized as counts (valid percentages), whereas continuous variables are presented as mean \pm standard deviation, or median [25th-75th percentile]. Before inclusion in multivariable regression models, predictors with missing values were imputed using non-parametric chained equation imputation with random forests and n=5 iterations (19). Pairwise comparisons between continuous variables or an ordinal and a continuous variable were performed using Spearman's rho (ρ) coefficient. For the rate of change in AV V_{max}, we fit a generalized linear model adjusting for the patient's age, sex, race, ethnicity,

as well as AV V_{\max} and LVEF at baseline. Interactions between continuous covariates were modeled using an interaction term (i.e., AV $V_{\max} \times$ DASSi) and presented graphically using contour plots. For the outcomes of time-to-all-cause mortality or AVR and time-to-next severity stage, we fit multivariable Cox regression models to account for the variable length of follow-up while adjusting for the above covariates. To visualize the association between DASSi as a continuous predictor and the outcome of interest while adjusting for covariates, we further present flexible hazard ratio curves showing the hazard ratio across a range of DASSi values relative to a reference value (package *smoothHR* in R); we also present adjusted survival curves across discrete DASSi bins. Where applicable, the results of subgroup analyses are summarized in the form of forest plots. All statistical tests were two-sided with a significance level of 0.05. Analyses were performed using Python (version 3.11.2) and R (version 4.2.3).

Ethical Approval of Studies and Informed Consent: The study was reviewed by the Yale and Cedars-Sinai Institutional Review Boards (IRBs), which approved the study protocol and waived the need for informed consent as the study represents secondary analysis of existing data (Yale IRB ID #2000029973).

RESULTS

Baseline characteristics of the New England cohort

The New England cohort consisted of 8,798 patients (n=4,250 [48.3%] women) with a median age of 71 [IQR 60-80] years at baseline (**Table 1**). Among these, 613 (8.2%) reported Hispanic/Latino ethnicity, 6,347 (82.4%) were White and 737 (9.6%) Black. At the time of the baseline echocardiographic assessment, 1,047 (13.1%) had aortic sclerosis without stenosis,

2,017 (25.3%) had mild AS and 979 (12.3%) had moderate AS, with a median AV V_{max} of 1.8 m/sec [IQR 1.4-2.6] and median DASSi of 0.24 [IQR 0.10-0.47]. Among individuals with complete echocardiographic parameters, higher baseline DASSi correlated with greater baseline AV V_{max} and mean AV gradients ($\rho=0.63$, $n=8,798$; and 0.64 , $n=6,220$, respectively, both $p<0.001$), lower calculated AV area ($\rho=-0.53$, $n=5,410$, $p<0.001$) and peak velocity ratio ($\rho=-0.63$, $n=8,163$, $p<0.001$), greater E/e' (maximum velocity of the early trans-mitral filling flow at diastole divided by the maximum velocity of the septal mitral annulus at early diastole; $\rho=0.36$, $n=7,079$, $p<0.001$), left atrial volume index values ($\rho=0.31$, $n=7,421$, $p<0.001$), and right ventricular systolic pressure ($\rho=0.18$, $n=6,312$, $p<0.001$). DASSi was independent of left ventricular ejection fraction ($\rho=-0.01$, $n=8,608$, $p=0.39$) and estimated stroke volume ($\rho=-0.02$, $n=7,073$, $p=0.11$).

DASSi and echocardiographic progression of AS

In total 5,483 of 8,798 patients (62.3%) had at least one follow-up study (median 4 [IQR 2-5] studies/patient) with a median follow-up of 3.5 [IQR 2.3-4.6] years. At baseline, DASSi ranged from 0.15 [IQR 0.06-0.26] among patients without AS to 0.61 [0.48-0.72] among patients with moderate AS (**Figure 2A**). The median observed rate of change in AV V_{max} was estimated at 0.07 m/sec/year [IQR -0.04 to 0.23 m/sec/year], ranging from 0.01 [IQR -0.11 to 0.13] m/sec/year among patients without AS to 0.18 [0.03-0.38] m/sec/year among patients with moderate AS (**Figure 2B**).

Higher DASSi was an independent predictor of AV V_{max} progression, with each 0.1 increment associated with a 0.033 [95% CI: 0.028-0.038, $p<0.001$] increase in AV V_{max} (m/sec/year), adjusting for the patient's age, sex, race, ethnicity, baseline AV V_{max}, and LVEF

(**Figure 3A**). There was a graded association, ranging from (mean±SEM) 0.04 ± 0.01 m/sec/year for DASSi values <0.2 at baseline, to 0.21 ± 0.01 for baseline values ≥ 0.6 (**Figure S1**), which persisted within each distinct baseline AS stenosis group ($p<0.001$ within each subgroup; **Figure 3B**). There was evidence of interaction between baseline DASSi and the flow-corrected peak velocity ratio ($p_{interaction}=0.002$), but not with AV V_{max} ($p_{interaction}=0.026$), with higher DASSi associated with higher rates of progression for lower baseline peak velocity ratios (**Figure 3C-D**). The association remained consistent across demographic subgroups, impaired or preserved left ventricular function (LVEF \geq vs $<50\%$) and baseline AV V_{max} strata (**Figure S2**).

Over a median follow-up of 3.1 [1.5-4.0] years, 2,037 (37.2%) of the patients had a follow-up echocardiographic report describing a higher AS severity grade than their baseline study. Greater DASSi values were associated with a higher adjusted risk of progressing to the next severity stage (adj. HR 1.14 [95% CI 1.12-1.17], $p<0.001$ per 0.1 increments) after adjusting for the above-mentioned covariates, including the baseline AS severity stage (sclerosis, mild or moderate AS). Of note, DASSi maintained its prognostic value for progression to any AS stage among the 2,091 patients without AS at baseline (adj. HR 1.16 [1.09-1.23], $p<0.001$).

DASSi and future risk of mortality or aortic valve replacement

The 8,798 patients in the New England cohort were followed for a median period of 4.1 [IQR 2.3-5.4] years, during which 1,302 patients died and 736 underwent AVR (1,964 patients had AVR or died during follow-up). For every 0.1 increment in the baseline DASSi, there was a higher adjusted risk of death or AVR (HR 1.10 [95% CI 1.08-1.13, $p<0.001$), which persisted for each individual outcome (all-cause mortality: HR 1.06 [1.03-1.10], $p<0.001$, & AVR: HR 1.21 [1.16-1.26], $p<0.001$), adjusted for the patient's age, sex, race/ethnicity, baseline AV V_{max} and

LVEF (**Table 2 & Figure 4**). Specifically patients in the highest group (DASSi ≥ 0.6) had an 80% higher adjusted risk of the composite endpoint compared to those in the lowest group (DASSi < 0.2) (**Figure S3A**). The prognostic value of DASSi was consistent across men and women, and different age, race/ethnicity, LVEF, and AV Vmax strata (**Figure S3B**).

Prediction of AS progression in a geographically distinct cohort: The geographically distinct Cedars-Sinai cohort included 3,811 participants (n=1,688 (44.3%) women) with a median age of 67 [IQR 54-78] years. At baseline, 3,402 (89.3%) had no AS, 251 (6.6%) sclerosis without stenosis, 83 (2.2%) mild AS, and 75 (2.0%) moderate AS. Among a subset of 1,292 patients with available echocardiographic follow-up over a median of 1.1 [0.4-1.8] years, DASSi predicted the rate of change in AV Vmax (m/sec/year), independent of baseline covariates (adj. coefficient 0.08 [95% CI 0.05-0.11], $p < 0.001$) (**Figure 5A & S4A**). Over 3.8 [IQR 3.1-4.4] years, there were 664 deaths reported and 65 transcatheter AVR procedures performed (>90 days after the baseline TTE). Baseline DASSi was also identified as a significant and independent predictor of all-cause mortality or late AVR (**Table 2 & Figures 5B & S4B**; HR of 1.14 [95% CI 1.09-1.20], $p < 0.001$ for each 0.1 increment).

DISCUSSION

In this multi-center cohort study of 12,609 patients with no or early AS at baseline, a recently developed and validated, deep learning-derived echocardiographic index for AS severity – DASSi – was a significant predictor of AS development and progression independent of key clinical parameters and the baseline severity stage defined by traditional Doppler criteria. DASSi can be measured through standard two-dimensional echocardiography of the PLAX view without

the need for Doppler measurements, reducing operator dependence and offering a standardized solution for echocardiographic monitoring in the community. Taken together, these findings highlight the promise of deep learning-enhanced two-dimensional echocardiography in the phenotyping of complex valvular disease by maximizing the diagnostic yield of existing clinical protocols.

Several epidemiological studies have highlighted the morbidity and health economic impact of undiagnosed AS (20), and the importance of early detection and risk stratification. Efforts to identify individuals at risk of progression are limited by the large burden of milder forms of aortic valve disease, such as aortic sclerosis, which is present in approximately 26% and 50% of individuals over 65 years and 85 years, respectively (13). Despite the lack of flow limitation in these valves, aortic sclerosis is associated with an up to 50% increase in the risk of cardiovascular mortality or myocardial infarction (13), and higher risk of progression to severe AS (21,22). However, a key challenge in personalizing the management of these patients is the marked variability in the progression rates of patients within similar Doppler-adjudicated severity stages (23–26). Prior efforts in this space have focused on identifying a broader range risk factors that are independently associated with AS progression, including traditional risk factors such as hypercholesterolemia, smoking, renal dysfunction, and elevated natriuretic peptide levels, which lack specificity for AS (10,27). Alternative Doppler-derived indices require skilled acquisition and modifications to the scanning and reporting protocols (27,28), whereas multi-modal imaging solutions such as with targeted positron-emission tomography radiotracers to detect active microcalcification (29) can be costly and is not readily available.

Deep learning-enhanced, two-dimensional echocardiography with DASSi aims to bridge this gap by providing a Doppler-independent AS severity metric that can be computed from any

portable or standard transthoracic echocardiogram. Trained to detect generalizable features associated with the severe AS phenotype (14), DASSi can be computed on any routine echocardiogram, and maintains its prognostic value across the spectrum of AS stages, identifying individuals who do not meet traditional criteria for severe AS, yet exhibit faster rates of progression similar to those with moderate AS. Critically, DASSi has several features that make it generalizable and scalable. Unlike prior methods that have utilized structured echo reports and measurements (28,30–32), Doppler images (33) or still images of the aortic valve (34), DASSi can be directly applied to unprocessed, standard PLAX videos, without the need for any Doppler or two-dimensional measurements. This minimizes potential information loss and provides a quality-controlled, reader-independent metric to supplement a trained echocardiographer's impression. It also effectively integrates structural and functional parameters through its modeling of both temporal and spatial associations across all visualized structures, thus learning global representations that are not captured by structured fields in traditional reporting databases. Prior explainability models have illustrated that it focuses on the aortic valve, but also the mitral annulus and the left atrium, and further correlates with both Doppler aortic valve parameters as well as metrics of diastolic dysfunction (14). In summary, DASSi does not replace but rather augments the ability of the human reader to better define the individualized AS phenotype of each patient, with implications for both point-of-care and traditional echocardiographic assessment.

Limitations: Our study is not without limitations. Given its retrospective nature, the decision to pursue repeat echocardiographic imaging was based on clinical grounds rather than a study protocol. However, subgroup analyses revealed overall consistent results across varying levels of

AS severity at baseline. Results were also robust across both traditional clinical outcomes (including mortality and AVR) and longitudinal changes in Doppler parameters. Second, we focused on AV V_{\max} , given its more complete capture in our dataset. Though this parameter may be flow-dependent, we demonstrate that associations persisted despite adjusting for LVEF and when modeling against the peak velocity ratio. Future randomized-controlled trials will explore the ability of DASSi to optimize the risk stratification and downstream testing, outcomes and healthcare resource utilization across patients with mild or moderate levels of AS not meeting criteria for AVR (33).

CONCLUSION

Our study demonstrates the ability of deep learning-enhanced two-dimensional echocardiography to detect distinct clinical phenotypes and trajectories among patients with non-severe AS. DASSi is easy to calculate through standard, single-view, two-dimensional echocardiography by operators with minimal experience without the need for Doppler imaging. The proposed paradigm effectively integrates structural and temporal information into a unified index that determine AS progression and its associated morbidity and mortality.

TABLES

Table 1. Table of cohort demographics.

Feature	Value	New England Cohort	Cedars-Sinai
Total participants		8,798	3,811
Age		71 [60, 80]	67 [54, 78]
Female sex, n (%)		4,250 (48.3)	1,688 (44.3)
Race & Ethnicity, n (%)	Asian	108 (1.4)	298 (8.0)
	Black	737 (9.6)	551 (14.9)
	Other	515 (6.7)	252 (6.8)
	White or Caucasian	6,347 (82.4)	2,160 (58.3)
	Hispanic or Latino	613 (8.2) (Reported separately of race)	424 (11.4) (Reported with race)
LVEF (%)		62 [57,66]	61 [54, 66]
LVIDd Index (cm/m²)		2.4 [2.2, 2.6]	2.4 [2.1, 2.7]
RVSP (mmHg)		29 [23, 37]	28 [21, 38]
Aortic Stenosis	None	3,929 (49.3)	3,402 (89.3)
	Sclerosis	1,047 (13.1)	251 (6.6)
	Mild	2,017 (25.3)	83 (2.2)
	Moderate	979 (12.3)	75 (2.0)
AV area (cm²)		1.5 [1.2, 1.9]	2.0 [1.3, 2.6]
AV Mean Gradient (mm Hg)		11.5 [5.3, 17.3]	5.0 [3.0, 11.0]
AV Peak Velocity (m/s)		1.8 [1.4, 2.6]	1.4 [1.1, 1.8]
DASSi		0.24 [0.10,0.47]	0.15 [0.07, 0.30]
Categorical variables are summarized as counts (valid percentages). Continuous variables are presented as median [25 th , 75 th percentile]. AV: aortic valve; BMI: body mass index. BP: blood pressure; DASSi: digital aortic stenosis severity index; LVEF: left ventricular ejection fraction; LVIDd: left ventricular internal diastolic diameter; RVSP: right ventricular systolic pressure.			

Table 2. Adjusted Cox regression estimates for DASSi as a predictor of all-cause mortality and aortic valve replacement.

DASSi	Death or AVR	Death	AVR
New England cohort (n=8,798)			
Continuous DASSi <i>per 0.1 increments</i>	1.10 [1.07-1.13], $p<0.001$	1.06 [1.03-1.10], $p<0.001$	1.21 [1.16-1.26], $p<0.001$
Categorized DASSi	Reference	Reference	Reference
<i>0 to less than 0.2</i>	1.13 [0.98-1.30], $p=0.10$	1.09 [0.94-1.28], $p=0.26$	2.76 [1.84-4.14], $p<0.001$
<i>0.2 to less than 0.4</i>	1.36 [1.18-1.58], $p<0.001$	1.22 [1.03-1.46], $p=0.023$	4.48 [3.03-6.63], $p<0.001$
<i>0.4 to less than 0.6</i>	1.81 [1.54-2.13], $p<0.001$	1.56 [1.28-1.90], $p<0.001$	5.32 [3.56-7.94], $p<0.001$
<i>0.6 or greater</i>			
Cedars-Sinai cohort (n=3,811)			
Continuous DASSi <i>per 0.1 increments</i>	1.14 [1.09-1.20], $p<0.001$	1.14 [1.08-1.21], $p<0.001$	1.13 [0.98-1.31], $p=0.10$
Categorized DASSi	Reference	Reference	Reference
<i>0 to less than 0.2</i>	1.53 [1.26-1.85], $p<0.001$	1.59 [1.31-1.92], $p<0.001$	2.62 [0.66-10.35], $p=0.17$
<i>0.2 to less than 0.4</i>	1.69 [1.31-2.18], $p<0.001$	1.81 [1.38-2.36], $p<0.001$	4.06 [1.04-15.85], $p=0.044$
<i>0.4 to less than 0.6</i>	2.14 [1.57-2.92], $p<0.001$	1.96 [1.35-2.82], $p<0.001$	3.73 [0.91-15.38], $p=0.07$
<i>0.6 or greater</i>			
Estimates are derived from multivariable Cox regression analysis adjusted for baseline age, left ventricular ejection fraction, peak aortic valve velocity, sex, race, and ethnicity. AVR: aortic valve replacement; DASSi: digital aortic stenosis severity index.			

FIGURES

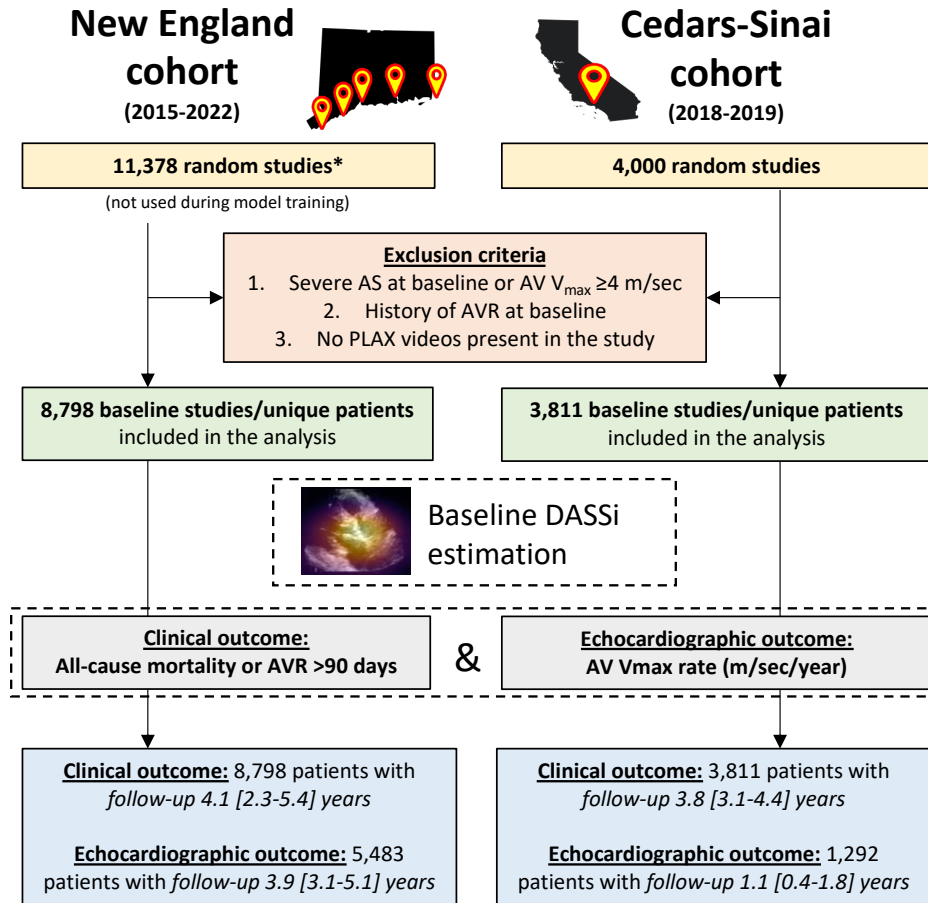


Figure 1 | Study design. *sample enriched for mild and moderate aortic stenosis. $AV V_{max}$: peak aortic valve velocity; AVR: aortic valve replacement; DASSi: digital aortic stenosis severity index.

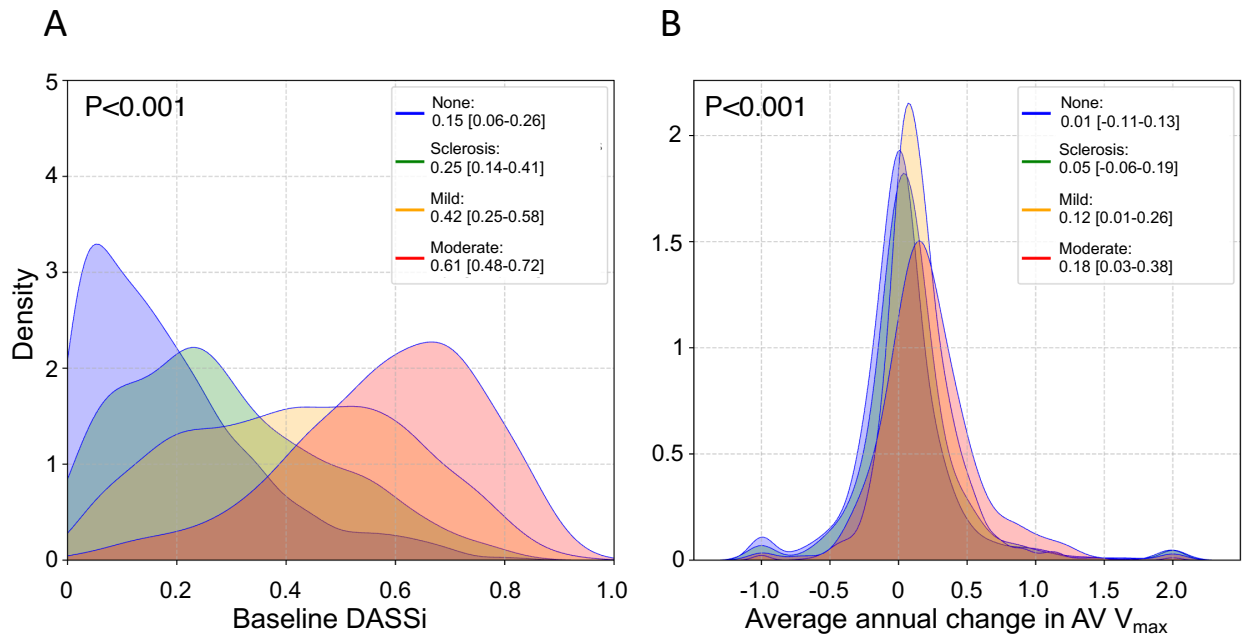


Figure 2 | Baseline DASSi phenotyping and observed rates of AS progression in the New England cohort. (A) Density plot of the DASSi (digital aortic stenosis [AS] severity index) at baseline across AS severity groups. (B) Density plots of the observed, annualized rate of change in the peak aortic valve velocity across time (in m/s/year) stratified by the baseline AS severity group. *AS*: aortic stenosis; *DASSi*: digital aortic stenosis severity index.

New England cohort (2015-2022)

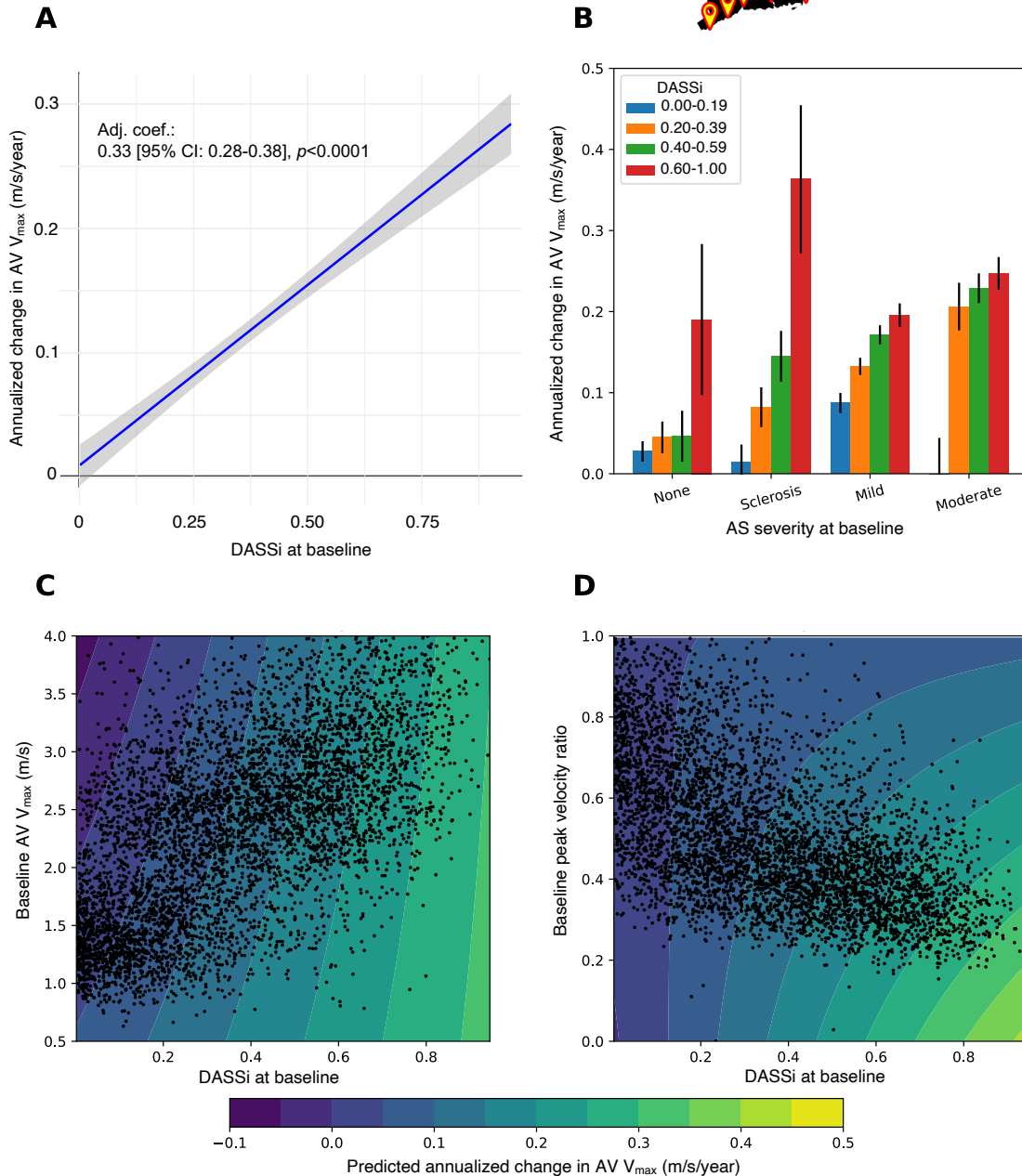


Figure 3 | Stratifying the rate of aortic stenosis (AS) progression in the New England cohort. (A) Adjusted regression curve with 95% confidence bands showing the association between the baseline DASSi (digital aortic stenosis severity index) and the annual rate of change in the peak aortic valve velocity (AV V_{max}) (B) Observed progression rates across DASSi subgroups stratified by baseline severity of AS (error bars denote the standard error of mean). (C-D) Contour plots to assess the interaction between DASSi and (C) the baseline AV V_{max} (m/sec), as well as (D) the flow-independent peak velocity ratio (ratio of peak aortic to peak left ventricular outflow velocity). *AS*: aortic stenosis; *DASSi*: digital aortic stenosis severity index.

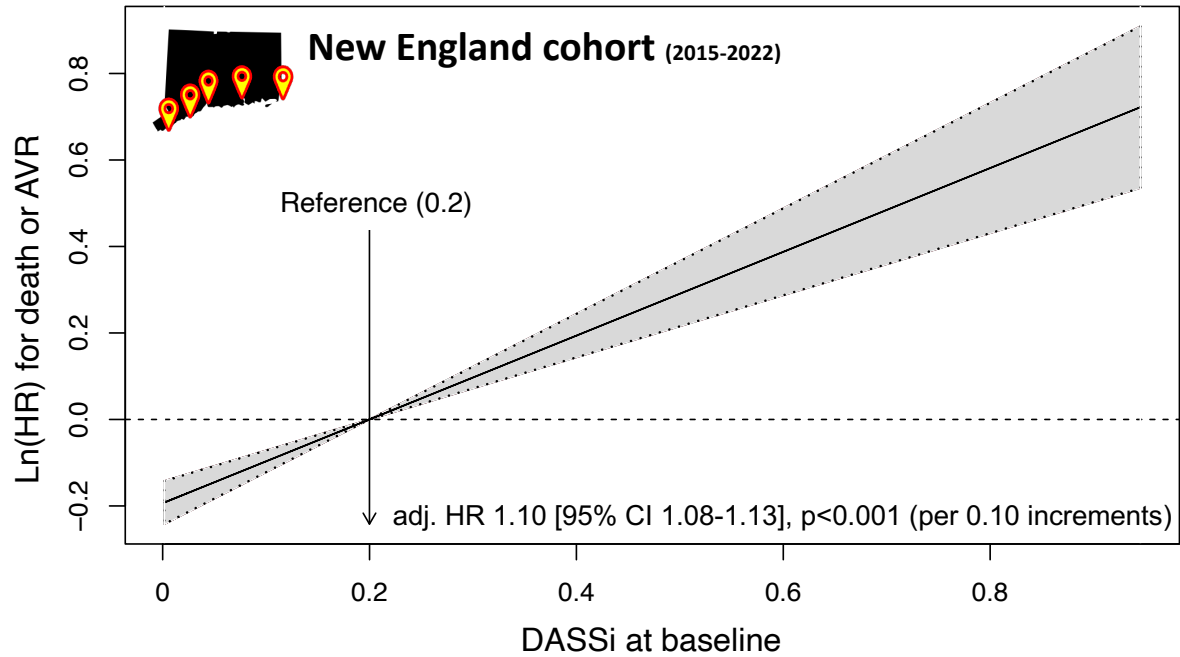
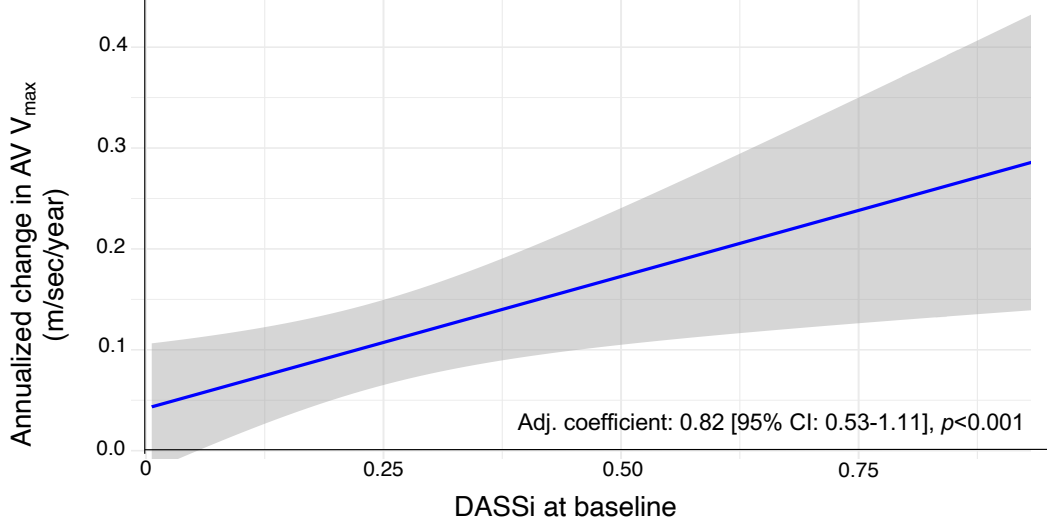


Figure 4 | Flexible adjusted hazard ratio curve for all-cause mortality or AVR in the New England cohort. Shaded area represents the 95% confidence band. AVR: aortic valve replacement; CI: confidence interval; DASSi: digital aortic stenosis severity index; HR: hazard ratio.



Cedars-Sinai cohort (2018-2019)

A. Echocardiographic progression: annualized change in AV V_{max}



B. Clinical progression: Death or aortic valve replacement

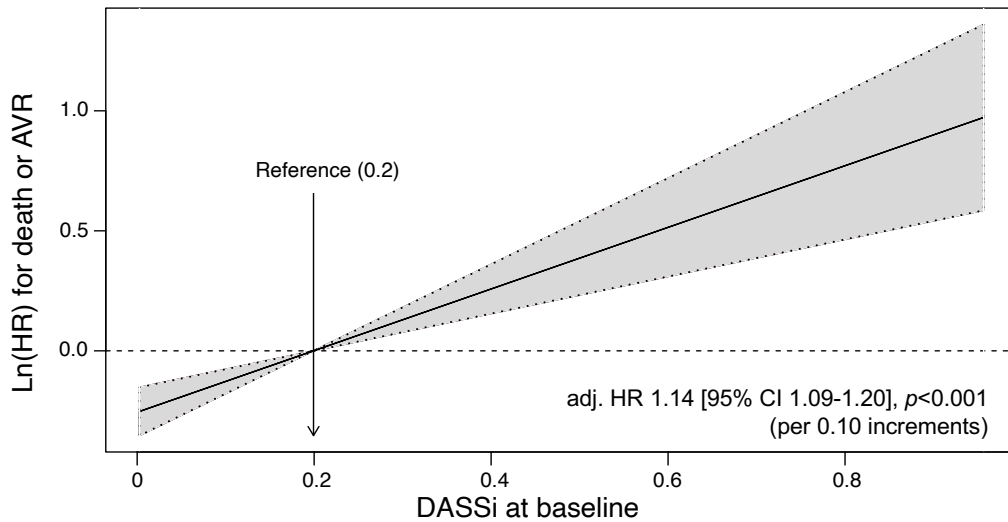


Figure 5 | External testing in the Cedars-Sinai cohort. (A) Adjusted regression curve showing the association between the baseline DASSi (digital aortic stenosis severity index) and the annual rate of change in the peak aortic valve velocity (AV V_{max}). (B) Flexible adjusted hazard ratio curve for all-cause mortality or AVR. AVR: aortic valve replacement; CI: confidence interval; DASSi: digital aortic stenosis severity index; HR: hazard ratio.

REFERENCES

1. Eugène Marc., Duchnowski Piotr., Prendergast Bernard., et al. Contemporary Management of Severe Symptomatic Aortic Stenosis. *J Am Coll Cardiol* 2021;78(22):2131–43.
2. Otto CM., Prendergast B. Aortic-valve stenosis--from patients at risk to severe valve obstruction. *N Engl J Med* 2014;371(8):744–56.
3. Kapadia SR., Leon MB., Makkar RR., et al. 5-year outcomes of transcatheter aortic valve replacement compared with standard treatment for patients with inoperable aortic stenosis (PARTNER 1): a randomised controlled trial. *Lancet* 2015;385(9986):2485–91.
4. Mack MJ., Leon MB., Thourani VH., et al. Transcatheter Aortic-Valve Replacement with a Balloon-Expandable Valve in Low-Risk Patients. *N Engl J Med* 2019;380(18):1695–705.
5. Reardon MJ., Van Mieghem NM., Popma JJ., et al. Surgical or Transcatheter Aortic-Valve Replacement in Intermediate-Risk Patients. *N Engl J Med* 2017;376(14):1321–31.
6. Kang D-H., Park S-J., Lee S-A., et al. Early Surgery or Conservative Care for Asymptomatic Aortic Stenosis. *N Engl J Med* 2020;382(2):111–9.
7. The Early Valve Replacement in Severe Asymptomatic Aortic Stenosis Study. Available at: <https://clinicaltrials.gov/ct2/show/NCT04204915>. Accessed June 2, 2022.
8. Banovic M., Putnik S., Penicka M., et al. Aortic Valve Replacement Versus Conservative Treatment in Asymptomatic Severe Aortic Stenosis: The AVATAR Trial. *Circulation* 2022;145(9):648–58.
9. Willner Nadav., Prosperi-Porta Graeme., Lau Lawrence., et al. Aortic Stenosis Progression. *JACC Cardiovasc Imaging* 2023;16(3):314–28.
10. Palta S., Pai AM., Gill KS., Pai RG. New insights into the progression of aortic stenosis: implications for secondary prevention. *Circulation* 2000;101(21):2497–502.
11. Mitchell C., Rahko PS., Blauwet LA., et al. Guidelines for performing a comprehensive transthoracic echocardiographic examination in adults: Recommendations from the American society of echocardiography. *J Am Soc Echocardiogr* 2019;32(1):1–64.
12. Delgado V., Clavel M-A., Hahn RT., et al. How Do We Reconcile Echocardiography, Computed Tomography, and Hybrid Imaging in Assessing Discordant Grading of Aortic Stenosis Severity? *JACC Cardiovasc Imaging* 2019;12(2):267–82.
13. Otto CM., Lind BK., Kitzman DW., Gersh BJ., Siscovick DS. Association of aortic-valve sclerosis with cardiovascular mortality and morbidity in the elderly. *N Engl J Med* 1999;341(3):142–7.
14. Holste G., Oikonomou EK., Mortazavi BJ., et al. Severe aortic stenosis detection by deep learning applied to echocardiography. *Eur Heart J* 2023. Doi: 10.1093/eurheartj/ehad456.
15. Abadie A., Chingos MM., West MR. Endogenous Stratification in Randomized Experiments. *Rev Econ Stat* 2018;100(4):567–80.
16. Baumgartner H., Hung J., Bermejo J., et al. Echocardiographic assessment of valve stenosis: EAE/ASE recommendations for clinical practice. *J Am Soc Echocardiogr* 2009;22(1):1–23; quiz 101–2.
17. Holste G., Oikonomou EK., Mortazavi B., Wang Z., Khera R. Self-supervised learning of echocardiogram videos enables data-efficient clinical diagnosis. *ArXiv [CsCV]* 2022.
18. Nayeri A., Xu M., Farber-Eger E., et al. Initial changes in peak aortic jet velocity and mean gradient predict progression to severe aortic stenosis. *Int J Cardiol Heart Vasc* 2020;30:100592.

19. Stekhoven DJ., Bühlmann P. MissForest--non-parametric missing value imputation for mixed-type data. *Bioinformatics* 2012;28(1):112–8.
20. Stewart S., Afoakwah C., Chan Y-K., Strom JB., Playford D., Strange GA. Counting the cost of premature mortality with progressively worse aortic stenosis in Australia: a clinical cohort study. *Lancet Healthy Longev* 2022;3(9):e599–606.
21. Otto CM. Aortic stenosis: even mild disease is significant. *Eur Heart J* 2004;185–7.
22. Rosenhek R., Klaar U., Schemper M., et al. Mild and moderate aortic stenosis. Natural history and risk stratification by echocardiography. *Eur Heart J* 2004;25(3):199–205.
23. Coisne A., Montaigne D., Aghezzaf S., et al. Association of Mortality With Aortic Stenosis Severity in Outpatients: Results From the VALVENOR Study. *JAMA Cardiol* 2021;6(12):1424–31.
24. Otto CM., Burwash IG., Legget ME., et al. Prospective study of asymptomatic valvular aortic stenosis. Clinical, echocardiographic, and exercise predictors of outcome. *Circulation* 1997;95(9):2262–70.
25. Hariri Essa H., El Halabi Jessica., Kassis Nicholas., et al. Sex Differences in the Progression and Long-Term Outcomes of Native Mild to Moderate Aortic Stenosis. *JACC Cardiovasc Imaging* n.d.;0(0). Doi: 10.1016/j.jcmg.2023.06.006.
26. Kebed K., Sun D., Addetia K., Mor-Avi V., Markuzon N., Lang RM. Progression of aortic stenosis and echocardiographic criteria for its severity. *Eur Heart J Cardiovasc Imaging* 2020;21(7):737–43.
27. Howard T., Majmundar M., Sarin S., et al. Predictors of Major Adverse Cardiovascular Events in Patients With Moderate Aortic Stenosis: Implications for Aortic Valve Replacement. *Circ Cardiovasc Imaging* 2023;16(7):557–65.
28. Seo JH., Kim KH., Chun KJ., Lee B-K., Cho B-R., Ryu DR. How can progression be predicted in patients with mild to moderate aortic valve stenosis? *Eur Heart J Cardiovasc Imaging* 2023. Doi: 10.1093/ehjci/jead099.
29. Dweck MR., Jenkins WSA., Vesey AT., et al. 18F-sodium fluoride uptake is a marker of active calcification and disease progression in patients with aortic stenosis. *Circ Cardiovasc Imaging* 2014;7(2):371–8.
30. Moualla SK., McCarthy PM., Thomas JD., et al. Artificial intelligence-enabled predictive model of progression from moderate to severe aortic stenosis. *Intelligence-Based Medicine* 2022;6:100062.
31. Strange G., Stewart S., Watts A., Playford D. Enhanced detection of severe aortic stenosis via artificial intelligence: a clinical cohort study. *Open Heart* 2023;10(2). Doi: 10.1136/openhrt-2023-002265.
32. Sánchez-Puente A., Dorado-Díaz PI., Sampedro-Gómez J., et al. Machine Learning to Optimize the Echocardiographic Follow-Up of Aortic Stenosis. *JACC Cardiovasc Imaging* 2023;16(6):733–44.
33. Krishna H., Desai K., Slostad B., et al. Fully Automated Artificial Intelligence Assessment of Aortic Stenosis by Echocardiography. *J Am Soc Echocardiogr* 2023;36(7):769–77.
34. Wessler BS., Huang Z., Long GM Jr., et al. Automated Detection of Aortic Stenosis Using Machine Learning. *J Am Soc Echocardiogr* 2023;36(4):411–20.