

1 **Strong early impact of letrozole on ovulation induction** 2 **outperforms clomiphene citrate in polycystic ovary** 3 **syndrome: a systematic review with meta-analysis**

4
5
6 Rita Zsuzsanna Vajna^{1,2}, András Mihály Géczi^{1,2}, Fanni Adél Meznerics^{2,4}, Nándor Ács^{1,2},
7 Péter Hegyi^{2,5,6}, Emma Zoé Feig², Péter Fehérvári^{2,7}, Szilvia Kiss-Dala², Szabolcs Várbíró^{1,2},
8 Judit Réka Hetthessy³ ¶, Levente Sára^{1,2*} ¶

9
10
11
12 1. Department of Obstetrics and Gynecology, Semmelweis University, Budapest, Hungary

13
14 2. Centre for Translational Medicine, Semmelweis University, Budapest, Hungary

15
16 3. Department of Orthopaedics, Semmelweis University, Budapest, Hungary

17
18 4. Department of Dermatology, Venereology and Dermatoooncology, Semmelweis
19 University, Budapest, Hungary

20
21 5. Institute of Pancreatic Diseases, Semmelweis University, Budapest, Hungary

22
23 6. Institute for Translational Medicine, University of Pécs, Medical School, Pécs, Hungary

24
25 7. Department of Biomathematics and Informatics, University of Veterinary Medicine,
26 Budapest, Hungary

27 **NOTE: This preprint reports new research that has not been certified by peer review and should not be used to guide clinical practice.**

28 *Corresponding author

29 E-mail: saralevente@icloud.com (LS)

30

31

32 ¶ Equal contribution, therefore, the authors should be considered as co-last authors

33

34

35 Acknowledgments

36 None.

37

38

39

40

41

42

43

44

45

46

47

48

49

50

51

52

53

54 **Conflict of interest**

55 None to declare.

56 **CRedit author contribution statement**

57 **RZSV:** conceptualisation, project administration, methodology, formal analysis, writing –
58 original draft; **AMG:** conceptualisation, data curation, writing - review & editing; **FAM:**
59 conceptualisation; supervision; writing – original draft; **NÁ:** conceptualisation, writing –
60 review & editing; **PH:** conceptualisation, writing - review & editing; **EZF:** conceptualisation,
61 data curation, writing - review & editing; **PF:** conceptualization and design of the study, data
62 curation, writing - review & editing; **SZK-D:** conceptualisation, data curation, writing -
63 review & editing; **SZV:** conceptualisation, formal analysis, visualization, writing – review &
64 editing; **JRH:** conceptualisation, writing -review & editing; **LS:** conceptualisation;
65 supervision; writing – original draft

66 **Funding**

67 This research did not receive any specific grant from funding agencies in the public,
68 commercial, or not-for-profit sectors.

69 **Disclosure Statement**

70 None.

71 **Ethical approval**

72 No ethical approval was required for this systematic review with meta-analysis, as all data
73 were already published in peer-reviewed journals. No patients were involved in the design,
74 conduct, or interpretation of our study.

75 The datasets used in this study can be found in the full-text articles included in the systematic
76 review and meta-analysis.

77 **Abstract**

78 **Background:** Polycystic ovary syndrome is one of the most frequent endocrinological
79 problems causing infertility in women worldwide. The main problem in these women is
80 hyperandrogenism and/or chronic oligo/anovulation, which leads to infertility. In this
81 systematic review and meta-analysis, we aimed to investigate the efficacy of a relatively new
82 drug for ovulation induction, letrozole, by comparing it to the first line of treatment for
83 ovulation induction, clomiphene citrate.

84 **Methods:** A literary search was conducted in three databases and included randomized
85 clinical trials comparing letrozole and clomiphene citrate for ovulation induction for women
86 with polycystic ovary syndrome. The diagnosis of polycystic ovary syndrome was determined
87 according to the Rotterdam criteria. We pooled data using a random-effects model.

88 **Results:** Our search provided a total of 1,994 articles, of which we included 25 studies. In the
89 letrozole group, endometrial thickness was significantly higher (Mean Difference=1.70,
90 Confidence Interval: 0.55-2.86; Heterogeneity: $I^2=97%$, p-value=0.008); odds for ovulation
91 (Odds Ratio=1.8, Confidence Interval: 1.21-2.69; Heterogeneity: $I^2=51%$, p-value=0.010) and
92 pregnancy (Odds Ratio=1.96, Confidence Interval: 1.37-2.81; Heterogeneity: $I^2=32%$, p-
93 value=0.002) were significantly higher; the resistance index of subendometrial arteries was
94 significantly lower (Mean Difference=-0.15, Confidence Interval: -0.27- -0.04; Heterogeneity:
95 $I^2=92%$, p-value=0.030).

96 **Conclusion:** Women with polycystic ovary syndrome treated with letrozole for ovulation
97 induction had higher ovulation and pregnancy rates, their endometrium became thicker, the
98 resistance index of subendometrial arteries was lower. The lower resistance index of the
99 subendometrial arteries can improve intrauterine circulation, which may provide better
100 circumstances for embryo implantation and development.

101 **Keywords: Clomiphene citrate; Letrozole; Ovulation induction; Polycystic ovary**
102 **syndrome; Subendometrial blood flow**

103

104

105

106

107 **Introduction**

108 Polycystic ovary syndrome (PCOS) is one of the most frequent endocrinological problems
109 causing infertility in women worldwide [1-4]; the prevalence of this disease is between 9 and
110 18% [5]. The main features of the disease are hyperandrogenism and/or chronic
111 oligo/anovulation, which leads to infertility [6, 7].

112 Clomiphene citrate (CC) has been used since 1960 as a first-line medication for ovulation
113 induction (OI) for women with PCOS [8, 9]. However, it has some unpleasant and non-dose-
114 dependent side effects, such as hot flashes, increase in ovarian size, bloating, nausea and
115 vomiting, breast sensitivity and pain, headaches, hair loss, insomnia, and depression [10].
116 Because of the longer half-life of CC, pregnancy may not occur despite ovulation, perhaps
117 due to its antiestrogenic effects on the endocervix and the endometrium [5, 8, 11].

118 Letrozole (LE) is a third-generation aromatase inhibitor, an approved adjuvant when treating
119 estrogen receptor-positive breast cancer. [12-15]. LE does not show anti-estrogenic effects
120 [16, 17] and has minor side effects such as leg cramps and headaches [18, 19]. LE is cleared
121 from the circulation faster, with a shorter half-life compared to CC [8]. The aromatase
122 inhibition develops, endometrium receptors are up-regulated and rapid endometrial growth is
123 observed without adverse effects on endometrium receptivity [8, 15]. Better blood supply to
124 the sub-endometrial halo and to the endometrium results in a thicker endometrial wall, thus
125 maximizing the odds of pregnancy [20].

126 Despite its many beneficial properties, LE is not yet included in the first-line therapy of PCOS
127 patients and little information is available on its effectiveness. Therefore, we aimed to
128 investigate the efficacy of LE on ovulation rate, endometrial receptivity, and pregnancy rate
129 in women with PCOS compared to the effects of CC by performing a systematic review and
130 meta-analysis.

131 **Methods**

132 We describe our systematic review and meta-analysis based on the recommendations of the
133 PRISMA (Preferred Reporting Items for Systematic Reviews and Meta-Analyses) 2020
134 guidelines (**S2 Table**) [21], while we followed the Cochrane Handbook's recommendations
135 for Systematic Reviews of Interventions Version 6.1.0 [22]. The protocol of the study was
136 registered on PROSPERO (registration number CRD42022376611; see
137 <https://www.crd.york.ac.uk/PROSPERO>); the protocol was strictly adhered to, additionally,
138 we conducted a post-hoc analysis including 12 additional outcomes indicated in the
139 population-intervention-control-outcome (PICO) to provide a comprehensive overview of all
140 potentially important outcomes.

141 **Literature search and eligibility criteria**

142 We completed our systematic literature search in three medical databases: MEDLINE (via
143 PubMed), Cochrane Library (CENTRAL), Embase, from inception to 21 November 2022.

144 We applied the query '(polycystic ovarian syndrome OR PCOS OR Stein-Leventhal
145 syndrome) AND (letrozole OR aromatase inhibitor)' to all fields in the search engines.

146 Neither language nor other restrictions were imposed.

147 Randomized clinical trials (RCTs) comparing LE to CC were included for patients diagnosed
148 with PCOS based on Rotterdam criteria (at least two years after menarche) [23], comparing
149 LE to CC were included. The following PICO agenda was applied:

150 P: women with PCOS

151 I: LE

152 C: CC

153 **O: outcomes according to the protocol:** endometrial thickness (ET); number of dominant
154 follicles; ovulation rate; pregnancy rate; endometrial volume; **additional outcomes:**
155 endometrial pattern- and echogenicity; diameter of dominant follicles; rate of mono-and
156 multifollicular development; single and multiple pregnancy rate; live birth rate; miscarriage
157 rate; prevalence of ectopic pregnancies; number of fetal anomalies; endometrial
158 vascularization index, flow index, vascularization flow index and detection rate of
159 endometrial-subendometrial blood flow; resistance index (RI) and pulsatility index (PI) of
160 subendometrial and uterine arteries; systolic velocity/diastolic velocity of subendometrial
161 arteries; biomarker /vascular endothelial growth factor and integrin alpha v β 3/ concentrations
162 in uterine fluid
163 Reviews, cases series, cases reports; studies including patients without PCOS diagnosis, girls
164 before menarche, and those within two years past menarche were excluded from the study.

165 **Study selection and data collection**

166 The selection was performed by two independent reviews (RZSV and EZF). Data from the
167 eligible articles were collected by two authors (RZSV and AMG) independently. The
168 following data were extracted about the study: first author; study type; the year of
169 publications; study population; study period. The following data were extracted about patients
170 studied: age; body mass index; duration of infertility; if ovulation was supported with human
171 chorionic gonadotropin or the luteal phase with progesterone; the time interval for
172 endometrial testing in relation to the cycle; the dose of LE or CC and the time of their
173 administration in relation to the cycle, and data on the outcomes.

174 **Study risk of bias assessment**

175 Two authors (RZSV and AMG) performed the risk of bias assessment independently. Risk of
176 bias was measured using the Risk of Bias Tool 2 [23], as recommended by the Cochrane

177 Collaboration . The quality assessment of the studies included was accomplished according
178 to the “Grades of Recommendation, Assessment, Development, and Evaluation (GRADE)”
179 workgroup with GRADE-Pro, as recommended by the Cochrane Collaboration [24].

180 **Synthesis methods**

181 Statistical analysis was conducted using the R 4.1.2. [25] and meta [26] and dmetar packages
182 [27].

183 Letrozole and clomiphene citrate were compared by calculating the mean differences of
184 endometrial thickness, number of dominant follicles, diameter of dominant follicles, RI of
185 subendometrial artery and PI of subendometrial artery between the intervention and the
186 control groups. Ovulation rate, pregnancy rate, single pregnancy rate, frequency of
187 miscarriages, frequency of monofollicular and multifollicular development were also
188 examined. The following outcomes were also analyzed separately in patients who ovulated
189 only: ET, number of dominant follicles, and pregnancy rate.

190 For binary outcomes, odds ratios with 95% confidence intervals (CI) were used as outcome
191 measures. The number of patients and events was extracted or calculated. The results are
192 presented as the odds of an event in the letrozole group compared to the odds of the same
193 event in the clomiphene citrate group.

194 For continuous data, differences in mean values were used with 95% confidence intervals.

195 To calculate mean differences, sample sizes, mean and standard deviation values were
196 extracted from the studies. Mean differences were calculated by extracting the mean values of
197 the clomiphene citrate group from the mean values of the letrozole group.

198 Pooled OR was calculated with the Mantel-Haenszel method [28] and Robins, Greenland, and
199 Breslow [29]. The exact Mantel-Haenszel method [28] (without continuity correction) was
200 used to handle zero cell counts as recommended by Cooper, Hedges, and Valentine [30] and
201 J. Sweeting, J. Sutton, and C. Lambert [31]. Confidence intervals were created with the Paule-
202 Mandel method [32], recommended by Veroniki et al. [33]. In case of 0 cell counts,
203 individual study odds ratios with 95% confidence intervals were calculated by adding 0.5 as
204 continuity correction (it was used only for visualization on forest plots).

205 Pooled mean differences were computed with the inverse variance method.

206 The restricted maximum-likelihood estimator was used with the Q profile method for
207 confidence intervals by Harrer et al. [34] and Veroniki et al. [33]. Hartung-Knapp adjustments
208 were also applied [35] and IntHout, Ioannidis, and Borm [36].

209 Between-study heterogeneity was assessed with the Higgins and Thompson's I^2 [37] statistic
210 and the Cochrane Q test recommended by Harrer et al. [34]. The I^2 statistic shows what
211 percentage of heterogeneity cannot be explained by random chance. Heterogeneity is
212 considered substantial if I^2 exceeds 75%.

213 **Publication bias and heterogeneity**

214 Publication bias was measured using funnel plots and Egger's test [38, 39]. In case of
215 endometrial thickness and pregnancy rate. The funnel plots do not indicate publication bias
216 and the result of Egger's test was not significant, which means publication bias could not be
217 detected.

218 In case of endometrial thickness, number of dominant follicles and diameter of dominant
219 follicles, RI of subendometrial artery and PI of subendometrial artery substantial
220 heterogeneity could be observed. Other outcome measures showed low or moderate
221 heterogeneity.

222 **Results**

223 **Search and selection**

224 We found 1,994 articles as a result of our systematic search. After duplicate removal, title
225 and abstract selection was performed on 1274 articles. Finally, we included 22 [1, 4, 15, 16,
226 19, 40-55] studies after full-text selection, and three additional studies based on citation
227 search [5, 6, 56]. The details of the search and selection process are visualized in **Fig 1**.

228 **Characteristics of the included studies**

229 Baseline and patient characteristics of the studies included in the systematic review and meta-
230 analysis are detailed in **Table 1**.

231

232

233

234

Table 1. Basic characteristics of the studies included in the systematic review and meta-analysis

Author (year)	Study site	N° of PP analyzed patients	N° of PP analyzed patients in LE group	N° of PP analyzed patients in CC group	Follow-up period (Number of treatment cycles)	Age (years) in LE group	Age (years) in CC group	BMI (kg/m ²) in LE group	BMI (kg/m ²) in CC group	Duration of infertility (years) in LE group	Duration of infertility (years) in CC group	Dosage of LE (mg/die)	Dosage of CC (mg/die)	Administration period of LE (day of cycle)	Administration period of LE (day of cycle)	Trigger of ovulation with HCG	Support of luteal phase with progesterone
Studies included in the meta-analysis																	
Al-Obaidi et al. [15]	Iraq	80	40	40	1	28.45±5.95 ‡ (PP)	29.58±5.81 ‡ (PP)	25.29±2.76 ‡ (PP)	24.87±2.85 ‡ (PP)	3.53±1.87 ‡ (PP)	3.5±1.88 ‡ (PP)	5	100	3-7.	3-7.	Y	NA
Atay et al. [40]	Turkey	106	51	55	1	27.1±0.9 ‡ (PP)	26.2±1.1 ‡ (PP)	26.1±1.91 ‡ (PP)	25.8±1.77 ‡ (PP)	2.2±0.7 ‡ (PP)	2.4±0.9 ‡ (PP)	2.5	100	3-7.	3-7.	Y	NA
Dehbashi et al. [56]	Iran	100	50	50	1	23.62±2.92 ‡ (PP)	24.32±3.43 ‡ (PP)	27.45±4.61 ‡ (PP)	27.09±3.61 ‡ (PP)	2±1.34 ‡ (PP)	2.3±1.85 ‡ (PP)	5	100	3-7.	3-7.	Y	NA
Elsedeek et al. [4]	Egypt	116	59	57	1	24.95±3.11 ‡ (PP)	25±3.59 ‡ (PP)	27.7±3.48 ‡ (PP)	29.18±3.47 ‡ (PP)	NA	NA	5	100	3-7.	3-7.	N	NA
Ghahiri et al. [6]	Iran	101	50	51	1	25.63 ± 4.41 (LE + CC group) ‡ (PP)	25.63 ± 4.41 (LE + CC group) ‡ (PP)	28.24±5.2 ‡ (PP)	27.13±4.9 ‡ (PP)	1: 6* (12**); >1: 44* (88**) (PP)	1: 4* (8**); >1: 47* (92**) (PP)	5	100	3-7.	3-7.	NA	NA
Hendawy et al. [41]	Egypt	54	28	26	1	27.2 ± 5.18 ‡ (ITT)	25.21 ± 5.18 ‡ (ITT)	26.2 ± 1.8 ‡ (ITT)	29.1 ± 2.3 ‡ (ITT)	NA	NA	2.5	100	3-7.	3-7.	Y	Y
Hussein et al. [42] ^	Iraq	80	40	40	1	28.45±5.95 ‡ (PP)	29.58±5.81 ‡ (PP)	25.29±2.76 ‡ (PP)	24.87±2.85 ‡ (PP)	3.53±1.87 ‡ (PP)	3.5±1.88 ‡ (PP)	5	100	3-7.	3-7.	Y	NA
Kar [43]	India	103	52	51	1	26.26±2.41 ‡ (PP)	26.27±2.47 ‡ (PP)	25.91±3.57 ‡ (PP)	25.95±3.31 ‡ (PP)	3.08±1.92 ‡ (PP)	3.14±2.16 ‡ (PP)	5	100	2-6.	2-6.	Y	Y
Khakhwani et al. [44]	Pakistan	70	36	34	1	≤20: 5* (12.8**); 21-30: 34* (87.2**) (ITT)	≤20: 3* (7.7**); 21-30: 36* (92.3**) (ITT)	<25: 24* (61.5**); >25: 15* (38.5**) (ITT)	<25: 28* (71.8**); >25: 11* (28.2**) (ITT)	<3: 30** (76.9**); ≥3: 9* (23.1**) (ITT)	<3: 30* (76.9**); ≥3: 12* (30.8**) (ITT)	5	100	3-7.	3-7.	NA	NA
Morbusher [45]	Pakistan	100	50	50	1	24.29±2.3 ‡ (PP)	24.26±2.33 ‡ (PP)	25.91±3.32 ‡ (PP)	25.89±3.31 ‡ (PP)	3.18±2.12 ‡ (PP)	3.12±2.02 ‡ (PP)	2.5	100	2-6.	2-6.	Y	Y

Najafi et al. [16]	Iran	220	110	110	1		26.2±3.6 ‡ (PP)	27±3.6 ‡ (PP)	27.6±1.8 ‡ (PP)	27.3±1.8 ‡ (PP)	2.1±1.2 ‡ (PP)	2.4±1.3 ‡ (PP)	10	100	3-7.	3-7.	Y	NA	
Selim et al. [19]	Saudi Arabia	201	102	99	1		26±2.7 ‡ (PP)	25.1±3.1 ‡ (PP)	24.4±4.3 ‡ (PP)	23.8±3.7 ‡ (PP)	2.9±0.6 ‡ (PP)	2.6±0.7 ‡ (PP)	5	100	3-7.	3-7.	Y	NA	
Wang et al. [1]	China	160	80	80	1		29.2±5.1 ‡ (PP)	28.4±4.6 ‡ (PP)	21.4±3.9 ‡ (PP)	22±3.8 ‡ (PP)	2.4±0.89 ‡ (PP)	2.1±0.8 ‡ (PP)	2.5	50	3-7.	3-7.	Y	NA	
Wang et al. [5]	China	112	57	55	1		28.5±7.6 ‡ (ITT)	28.3±7.5 ‡ (ITT)	24.9±8.4 ‡ (ITT)	25.3±7.9 ‡ (ITT)	2.4±0.7 ‡ (ITT)	2.3±0.6 ‡ (ITT)	2.5	50	5-9.	5-9.	Y	NA	
Zafar et al. [46]	Pakistan	360	180	180	1		26.61±4.81 ‡ (PP)	27.89±4.24 ‡ (PP)	NA	NA	4.11±3.5 ‡ (PP)	4.7±3.4 ‡ (PP)	2.5	50	2-6.	2-6.	NA	NA	
Studies included only in the systematic review																			
Al-Shaikh et al. [47]	Iraq	85	40	45	47	LE group: CC group:	18-40 §§ (LE + CC group) (PP)	18-40 §§ (LE + CC group) (PP)	NA	NA	NA	NA	5	100	2-5.	2-5.	NA	NA	
Amer et al. [48]	The United Kingdom	149	75	74	1 or 6	LE group: CC group:	28.3±4.4 ‡ (ITT)	28.1±4.2 ‡ (ITT)	27.5 (23.4 -32.2) § (ITT)	27.7 (23.0-31.0) § (ITT)	1.5 (1.0-2.0) § (ITT)	1.5 (1.0-2.0) § (ITT)	2,5->5	50->100	2/4-6/8	2/4-6/8	NA	NA	
Bansal et al. [55]	India	80	41	39	1 or 3	LE group: CC group:	27.0 ± 3.56 ‡ (ITT)	26.0 ± 3.97 ‡ (ITT)	23.90 ± 3.57 ‡ (ITT)	23.10 ± 3.64 ‡ (ITT)	3.9 ± 2.3 ‡ (ITT)	3.4 ± 2.3 ‡ (ITT)	2.5->7.5	50->150	2-6.	2-6.	Y	NA	
Baruah et al. [57]	India	50	25	25	56	LE group: CC group:	29.7±0.5 ‡ (PP)	30.2±0.5 ‡ (PP)	23.6±0.04 ‡ (PP)	24.52±0.02 ‡ (PP)	2.7±0.2 ‡ (PP)	2.9±0.5 ‡ (PP)	2.5->5	50->100	5-9.	5-9.	Y	NA	

Bayar et al. [49]	Turkey				LE group:	CC group:														
		74	38	36	99	95	32.2 ±3.9 ‡ (PP)	30.6± 4 ‡ (PP)	NA	NA	5 (1-10) § (PP)	3 (1-11) § (PP)	2.5	100	3-7.	3-7.	Y	NA		
Legro et al. [50]	The United States				LE group:	CC group:														
		750	374	376	5	5	28.9±4.5 ‡ (PP)	28.8±4.0 ‡ (PP)	35.2±9.5 ‡ (PP)	35.1±9.0 ‡ (PP)	40.9±38.0 ‡ (PP)	42.5±37.6 ‡ (PP)	2.5->7.5	50->150	3-7.	3-7.	NA	NA		
Ray et al. [54]	India				LE group:	CC group:														
		147	69	78	132	156	28 (19-35) § (PP)	29 (20-35) § (PP)	28.8 (23.2-34.6) § (PP)	28.5 (24.2-33.6) § (PP)	2.2 ‡‡ (PP)	2.4 ‡‡ (PP)	2.5	100	3-7.	3-7.	Y	NA		
Roy et al [51]	India				LE group:	CC group:														
		204	98	106	294	318	26.1±1.8 ‡ (PP)	26.5±1.3 ‡ (PP)	25.8 ±2.1 ‡ (PP)	25.4±1.56 ‡ (PP)	6.4±3.8 ‡ (PP)	5.8 ±3.1 ‡ (PP)	2.5->5	50->100	3-7.	3-7.	Y	NA		
Sakar et al. [52]	Turkey				LE group:	CC group:														
		323	175	148	1 or 6	1 or 6	25.9±4 ‡ (PP)	24.6±4.4 ‡ (PP)	25.4±3.2 ‡ (PP)	24.8±2.9 ‡ (PP)	2 (1-12) § (PP)	2 (1-11) § (PP)	5	100	2-5.	2-5.	NA	NA		
Sharief et al. [53]	Iraq				LE group:	CC group:														
		75	35	40	6	6	26.1±1.3 ‡ (PP)	25.3±2.1 ‡ (PP)	28.1±1.91 ‡ (PP)	27.8±1.7 ‡ (PP)	2.4±0.6 ‡ (PP)	2.3±0.4 ‡ (PP)	2,5-5	100-200	3-7.	3-7.	Y	NA		

‡ parameters represented as mean with standard deviation

‡‡ parameters represented as mean

§ parameters represented as median (min-max)

§§ parameters represented as min-max

* number of patients

** % of patients

ITT: data were analyzed intention-to-treat

PP: data were analyzed per-protocol

N°: number

LE: letrozole

CC: clomiphene citrate

BMI: body mass index

Y: yes; NA: no data available; N: no

^: the studied patient population is the same as Al-Obaidi et al. 2019 [15], with patients included in the article; therefore, we only included these results once in our meta-analysis

250 **Results of the quantitative analysis**

251 On the basis of the results of 11 studies including 1,651 patients, **ET** was significantly higher
252 in LE group /Mean difference (MD)=1.70, CI: 0.55-2.86; $I^2=97%$, $p=0.008$ / compared to CC
253 group (**Fig 2A**). The subset analysis conducted on only ovulating patients showed thicker
254 endometrium in LE group; however, this difference did not reach the level of statistical
255 significance /MD=2.2, CI: -0.38-4.78; $I^2=97%$, $p=0.077$ / (**S1 Fig**).

256 **Fig 2A) Forest plot for endometrial thickness (ET) - all patients.** Legend: LE-letrozole;
257 CC-clomiphene citrate; N-number of patients; MD-mean difference; SD-standard deviation;
258 CI-confidence interval; p-p-value.

259 **S1 Fig. Forest plot for endometrial thickness (ET) - ovulating patients only.** Legend: LE-
260 letrozole; CC-clomiphene citrate; N-number of patients; MD-mean difference; SD-standard
261 deviation; CI-confidence interval; p-p-value.

262 On the basis of the results of 9 studies including 1,510 patients, **odds of ovulation** and based
263 on the results of 11 studies including 1410 patients, **odds of pregnancy** were significantly
264 higher in LE patients /ovulation rate: odds ratio (OR)=1.80, CI: 1.21-2.69; $I^2=51%$, $p=0.010$
265 (**Fig 2B**); pregnancy rate: OR=1.96, CI: 1.37-2.81; $I^2=32%$, $p=0.002$ (**Fig 2C**)/ compared to
266 CC patients. In patients who ovulated as a result of the drug therapy used, odds of pregnancy
267 were also higher in LE group, but this difference did not reach the level of statistical
268 significance /OR=1.65, CI: 0.40-6.76; $I^2=56%$, $p=0.337$ / (**Fig S5**).

269 **Fig 2B) Forest plot for ovulation rate.** Legend: LE-letrozole; CC-clomiphene citrate; N-
270 number of patients; OR-odds ratio; CI-confidence interval; p-p-value.

271 **Fig 2C) Forest plot for pregnancy rate – all patients.** Legend: LE-letrozole; CC-
272 clomiphene citrate; N-number of patients; OR-odds ratio; CI-confidence interval; p-p-value.

273 **S5 Fig. Forest plot for pregnancy rate - ovulating patients only.** Legend: LE-letrozole;
274 CC-clomiphene citrate; N-number of patients; OR-odds ratio; CI-confidence interval; p-p-
275 value.

276 On the basis of the results of 3 studies including 460 patients, **RI of subendometrial arteries**
277 was significantly lower in LE patients /MD=-0.15, CI: -0.27- -0.04; I²=92%, p=0.030/
278 compared to CC patients (**Fig 3A**). **PI of subendometrial arteries** was also lower in the LE
279 group /MD=-0.17, CI: -0.81-0.47; I²=95%, p=0.372/, but this difference did not reach the
280 level of statistical significance (**Fig 3B**).

281 **Fig 3A) Forest plot for subendometrial circulation - resistance index (RI) of**
282 **subendometrial arteries.** Legend: LE-letrozole; CC-clomiphene citrate; N-number of
283 patients; MD-mean difference; SD-standard deviation; CI-confidence interval; p-p-value.

284 **Fig 3B) Forest plot for subendometrial circulation - pulsatility index (PI) of**
285 **subendometrial arteries.** Legend: LE-letrozole; CC-clomiphene citrate; N-number of
286 patients; MD-mean difference; SD-standard deviation; CI-confidence interval; p-p-value.

287 On the basis of the results of 8 studies including 253 patients, **odds of multiple pregnancies**
288 were higher in CC patients /multiple pregnancies: OR=0.41, CI: 0.12-1.35; I²=0%, p=0.119/
289 compared to LE patients (**S6 Fig**), but this difference did not reach the level of statistical
290 significance.

291 **S6 Fig. Forest plot for multiple pregnancy rate.** Legend: LE-letrozole; CC-clomiphene
292 citrate; N-number of patients; OR-odds ratio; CI-confidence interval; p-p-value.

293 On the basis of the results of 4 studies including 160 patients, there was no difference in the
294 **miscarriage** rate /OR=0.62, CI: 0.19-1.98; I²=0%, p=0.278/ (**S7 Fig**).

295 **S7 Fig. Forest plot for miscarriage rate.** Legend: LE-letrozole; CC-clomiphene citrate; N-
296 number of patients; OR-odds ratio; CI-confidence interval; p-p-value.

297 There was no significant difference between groups in the **number of follicles** /MD=-0.40,
298 CI: -0.84-0.03; I²=91%, p=0.066/ based on the results of 9 studies including 1264 patients (**S2**
299 **Fig**) and the **diameter of follicles** /MD=0.58, CI: -0.17-1.32; I²=45%, p=0.092/ based on the
300 results of 4 studies including 660 patients (**S4 Fig**) although more but smaller follicles were
301 seen in CC group. In the subset analysis of the number of follicles conducted in patients who
302 only ovulated, there was also no significant difference between the two groups /MD=-0.80 CI:
303 -2.48-0.89; I²= 80%; p=0.179/ (**S3 Fig**).

304 **S2 Fig. Forest plot for number of dominant follicles – all patients.** Legend: LE-letrozole;
305 CC-clomiphene citrate; N-number of patients; MD-mean difference; SD-standard deviation.
306 **CI-confidence interval; p-p-value.** Legend: LE-letrozole; CC-clomiphene citrate; N-number
307 of patients; MD-mean difference; SD-standard deviation.

308 **S4 Fig. Forest plot for diameter of dominant follicles.** Legend: LE-letrozole; CC-
309 clomiphene citrate; N-number of patients; MD-mean difference; SD-standard deviation.

310 **S3 Fig. Forest plot for number of dominant follicles - ovulating patients only.** Legend:
311 LE-letrozole; CC-clomiphene citrate; N-number of patients; MD-mean difference; SD-
312 standard deviation.

313 On the basis of the results of 3 studies including 563 patients, the **odds** were higher for
314 **monofollicular development** and lower for **multifollicular development** in LE patients
315 /monofollicular development: OR=1.99, CI: 0.62-6.34; I²=51%, p=0.126 (**S8 Fig**); in the case
316 of multifollicular development: OR=0.50, CI: 0.16-1.61; I²=51%, p=0.126 (**S9 Fig**)/
317 compared to CC patients, but this difference did not reach the level of statistical significance.

318 **S8 Fig. Forest plot for monofollicular development rate.** Legend: LE-letrozole; CC-
319 clomiphene citrate; N-number of patients; OR-odds ratio; CI-confidence interval; p-p-value.

320 **S9 Fig. Forest plot for multifollicular development rate.** Legend: LE-letrozole; CC-
321 clomiphene citrate; N-number of patients; OR-odds ratio; CI-confidence interval; p-p-value.

322 **Results of the qualitative analysis**

323 Results and main conclusions of the studies only comprised in the systematic review are
324 detailed in **Table 2.**

325

326

327

328

329

330

331

332

Table 2. Main conclusions of the studies only included in the systematic review

Author (year)	Endometrial thickness	Endometrial volume	Multilayered endometrial pattern and/or echogenicity	N° of dominant follicles	Diameter of dominant follicles	Monofollicular development cycles	Multifollicular development cycles	Ovulation rate	Pregnancy rate	N° of multiple pregnancies	N° of miscarriages	Live birth rate	Prevalence of ectopic pregnancy	N° of fetal anomalies	endometrial VI, FI VFI or detection rate of endometrial-subendometrial blood flow	RI and PI of subendometrial arteries	SV/DV of subendometrial arteries	RI and PI of uterine arteries	VEGF and/or integrin alpha vβ3 concentration in uterine fluid
Al-Obaidi et al. [15]	significantly higher in LE group §	NA	NA	#	#	NA	NA	NA	#	NA	NA	NA	NA	NA	NA	NA	significantly higher in LE group	NA	VEGF has significantly negative correlation with endometrial RI in LE group, no similar correlation was in CC group
Al-Shaikh et al. [47]	significantly higher in CC group	NA	NA	significantly higher in LE group □	no significant difference between LE and CC groups □	NA	NA	NA	no significant difference between LE and CC groups □	NA	one patient in LE group, 2 in CC group	NA	NA	NA	NA	NA	NA	NA	NA
Amer et al. [48]	significantly higher in CC group	NA	no significant difference between LE and CC group	NA	NA	NA	NA	no significant difference between LE and CC groups, but analyzing the data per cycle significantly higher in LE group	significantly higher in LE group	NA	NA	no significant difference between LE and CC groups	NA	none in LE and in CC group	NA	NA	NA	NA	NA
Bansal et al. [55]	no significant difference between LE and CC groups	NA	NA	NA	NA	significantly higher in LE group	NA	no significant difference between LE and CC groups §	significantly higher in LE group	NA	NA	NA	NA	NA	NA	NA	NA	NA	NA
Baruah et al. [57]	significantly higher in LE group	NA	NA	no significant difference between LE and CC groups	NA	NA	NA	NA	no significant difference between LE and CC groups □	none in LE and in CC group	NA	NA	NA	NA	NA	significantly lower in LE group	NA	NA	NA
Bayar et al. [49]	similar between LE and CC	NA	NA	significantly lower in LE group	NA	NA	NA	NA	no significant difference	none in LE and CC groups	one patient in LE group	no significant difference	NA	NA	NA	NA	NA	NA	NA

groups									between LE and CC groups □			between LE and CC groups □							
Ghahiri et al. [6]	NA	NA	NA	NA	NA	NA	NA	NA	#	#	#	NA	no significant difference between LE and CC groups	NA	NA	NA	NA	NA	NA
Hussein et al. [42]	significantly higher in LE group \$\$	NA	multilayered endometrial pattern and hypoechoogenic endometrium significantly more occurred in LE group (hypoechoogenic endometrium was highly significant associated with pregnancy in both groups)	##	##	NA	NA	NA	##	NA	NA	NA	NA	NA	NA	NA	NA	NA	NA
Legro et al. [50]	significantly higher in CC group	NA	NA	NA	NA	NA	NA	significantly higher in LE group	significantly higher in LE group	no significant difference between two groups	no significant difference between LE and CC groups	significantly higher in LE group	NA	four patients in LE group and 1 in CC group	NA	NA	NA	NA	NA
Ray et al. [54]	significantly higher in LE group	NA	NA	no significant difference between LE and CC groups □	no significant difference between LE and CC groups	majority of induced cycles in LE and CC group	NA	NA	no significant difference between LE and CC groups	NA	one patient in CC group	NA	NA	none in LE and in CC group	NA	NA	NA	NA	NA
Roy et al [51]	significantly higher in LE group	NA	NA	no significant difference between LE and CC groups	NA	NA	NA	similar between LE and CC groups	no significant difference between LE and CC groups □	not in LE group, 3 patients in CC group	no significant difference between LE and CC groups	significantly higher in LE group	NA	NA	NA	NA	NA	NA	NA
Sakar et al. [52]	significantly higher in LE group	NA	NA	similar between LE and CC groups	NA	NA	NA	significantly higher in LE group □	significantly higher in LE group	not in LE and in CC group	no significant difference between LE and CC groups	significantly higher in LE group	NA	one patient in LE group and 1 in CC group	NA	NA	NA	NA	NA
Sharief et al. [53]	significantly higher in LE group	NA	NA	significantly lower in LE group	NA	NA	NA	significantly higher in LE group	no significant difference between	NA	NA	NA	NA	NA	NA	NA	NA	NA	NA

LE and CC groups

Wang et al. [1]	#	significantly higher in LE group	multilayered endometrial pattern occurred in LE group significantly more frequently	#	#	NA	NA	#	§	NA	NA	NA	NA	NA	endometrial VI-FI-and VFI was significantly higher in LE group	#	NA	no significant difference between LE and CC groups	NA
Wang et al. [5]	#	significantly higher in LE group	NA	#	#	NA	NA	#	#	NA	NA	NA	NA	NA	endometrial VI-FI-and VFI were significantly higher in LE group	NA	NA	no significant difference between LE and CC groups	significantly higher in LE group
Dehbashi et al. [56]	#	NA	NA	#	NA	NA	NA	#	#	#	#	no significant difference between LE and CC groups	NA	none in LE group, 1 in CC group	NA	NA	NA	NA	NA
Selim et al. [19]	#	NA	NA	#	NA	NA	NA	#	#	#	NA	NA	NA	NA	rate of endometrial-subendometrial blood flow was significantly lower in LE group	#	NA	NA	NA

N°: number

LE: letrozole

CC: clomiphene citrate

□: data are given per cycle

§: cumulative ovulation rate

#: data are involved in quantitative analysis in meta-analysis (see in results)

##: data are involved in quantitative analysis in meta-analysis (the studied patient population is the same as in the article by Al-Obaidi et al. 2019 [15], therefore we only included these results once in our meta-analysis; see the results of the Al-Obaidi et al. [15])

\$: the given results could not be used for our quantitative analysis, so we did not include them in our meta-analysis

\$\$: the studied patient population is the same as in the article by Al-Obaidi et al. 2019 [15], but the given results could not be used for our quantitative analysis, so we did not include them in our meta-analysis and we only included these results once in our qualitative analysis in systematic review

344 **Quality assessment**

345 The results of the quality assessment are listed in the Summary of Findings Table (**S1 Table**
346 in the Supplement).

347 **Publication bias**

348 No evidence of publication bias was detected (**S10-14 Figs** in the Supplement).

349 The funnel plots do not indicate publication bias and the result of Egger's test was not
350 significant, which means publication bias could not be detected. Significant heterogeneity was
351 observed for ET, number of dominant follicles and diameter of dominant follicles, RI of
352 subendometrial artery, and PI of subendometrial artery. Other outcome measures showed low
353 or moderate heterogeneity.

354 **Risk of bias assessment**

355 The results of the risk of bias assessment are shown **S15-70 Figs** in the Supplement.

356 **Discussion**

357 PCOS and infertility caused by PCOS are huge problems worldwide, the treatment of which
358 has not been solved. Intensive research is underway to find the right drug for ovulation
359 induction; however, there is no comprehensive summary of the results of the studies so far. In
360 our study, we summarized the results of the available publications and identified several
361 positive properties of LE as an ovulation induction drug compared to the currently widely
362 used CC.

363 Thicker endometrium is associated with better embryo implantation [20]. ET in our meta-
364 analysis was significantly thicker in LE group compared to CC group. When we compared
365 our result with previous meta-analyses by He et al. found that the data of the articles included
366 in the analysis could not be pooled due to significant heterogeneity [58]. However, Gadalla et
367 al. stated that the endometrium was significantly thinner in CC group [11]. Akinoso-Imran et
368 al. found similar results after letrozole treatment [59]. Of the RCTs included in our qualitative
369 analysis (**Table 2**), six found significantly thicker endometrium in LE group [15, 42, 51-54,
370 57], three found significantly thicker endometrium in CC group [47, 48, 50], and two found
371 no significant difference between the two groups [49, 55]. In other studies, the endometrial
372 volume was significantly higher [1, 5] significantly more multilayered endometrial pattern [1,
373 42] and hypoechogenic endometrium occurred [42] in LE group. In contrast, one found no
374 significant difference between the two groups in terms of endometrial pattern and
375 echogenicity [48].

376 Patients taking CC appear to have more but smaller follicles, which may reduce the chance of
377 appropriate maturation, follicle rupture and increase the risk of hyperstimulation and the odds
378 of multiple pregnancies [60]. We found that the number of dominant follicles was higher in
379 patients taking CC, although the definition of dominant follicle differed in the articles (from
380 12 mm $<$ to 18 mm $=/ <$). The diameters of follicles did not differ significantly; however, the

381 follicles in LE group were larger. When we compared our results with previous meta-
382 analyses, we found that He et al. observed significantly fewer mature follicles per cycle in
383 patients taking letrozole [58]. In another study, the standardized mean difference revealed no
384 statistically significant difference between patients treated with LE or CC, but there were also
385 fewer mature follicles in letrozole group [59]. Of the RCTs included in our qualitative
386 analysis (**Table 2**), one found significantly higher numbers of dominant follicles in LE group
387 [47], two found significantly lower numbers in LE group [48, 49], and four found no
388 significant difference between the two groups [51, 52, 54, 57]. As for the diameter of the
389 dominant follicles, two found no significant difference between the two groups [47, 54].

390 Ovulation is essential for fertilization. We have previously presented that patients in LE group
391 had significantly higher odds of ovulation than in CC group. In comparison of our result with
392 previous meta-analyses, He et al. [58], Tsiami et al. [61] and Zhuo et al. [62] reported the
393 same result. Wang et al. pointed out that the ovulation rate was significantly better when
394 patients were taking LE instead of CC [63]. In contrast, Roque et al. [64] and Gadalla et al.
395 [11] reported that the odds of ovulation were similar in letrozole group and in CC group.
396 Akinoso-Imran et al. also found that letrozole treatment caused a significantly higher
397 ovulation rate compared to CC [59]. Shifu Hu et al. had similar results [65]. Of the RCTs
398 included in our qualitative analysis (**Table 2**), three found significantly higher ovulation rates
399 in LE group [50, 52, 53], two found no significant difference between the two groups [51,
400 55]. One found no significant difference in ovulation rate, but when analyzing the data per
401 cycle found, it reported significantly higher in LE group [48]. Another one found the
402 monofollicular development significantly higher [55] in LE group and one found the same
403 majority of cycles included in both groups [54].

404 It would be good if more women with PCOS increased their chances of getting pregnant. We
405 found that the odds of pregnancy were significantly higher in patients treated with letrozole

406 than in CC group. In comparison of our result with previous meta-analyses, four were found
407 to have significantly higher pregnancy rates [59, 62-64] and three were reported to have
408 significantly higher odds of live birth [62-64] after letrozole treatment. Gadalla et al. [11] and
409 Hu et al. [65] described similar differences between the two groups. In contrast, He et al.
410 found no significant difference in the odds of pregnancy between the two groups [58]. Of the
411 RCTs included in our qualitative analysis (**Table 2**), four found significantly higher
412 pregnancy rates in LE group [48, 50, 52, 55], but the other six found no significant difference
413 between the two groups [47, 49, 51, 53, 54, 57]. Three found significantly higher live birth
414 rates in LE group [50-52], and three found no significant difference between the two groups
415 [48, 49, 56].

416 Multiple pregnancy increases the odds of almost every potential complication of singleton
417 pregnancy (e.g. preterm birth, fetal growth restriction, etc.) [66]. In our research, the odds of
418 single pregnancies were higher amongst letrozole patients, and more multiple pregnancies
419 occurred amongst CC patients, although this difference did not reach the level of statistical
420 significance. Four previous meta-analyses came to a similar non-significant conclusion [58,
421 59, 63, 65]. In three of the RCTs included in our qualitative analysis (**Table 2**), no multiple
422 pregnancies occurred in either group [49, 52, 57]. One found no multiple pregnancy in LE
423 group, and three in CC group [51]. One found no significant difference between the two
424 groups [50].

425 The aim should not only be to achieve pregnancy, but also to carry as many pregnancies to
426 term as possible among women with PCOS. In our study, the odds of miscarriage were higher
427 in CC group, but this difference did not reach the level of statistical significance. Our results
428 are consistent with previous meta-analyses in the literature. [58, 59, 63-65]. Of the RCTs
429 included in our qualitative analysis (**Table 2**), three found no significant difference in the
430 number of miscarriages between the two groups [50-52], other studies found no difference or

431 one or two in groups [47, 49, 54]. In the prevalence of ectopic pregnancy, one found no
432 significant difference between the two groups [57]. Fetal anomalies were not found in either
433 group in two RCTs [48, 54], Legro et al. found four in LE group, one in CC group [50], one
434 found one in LE group, one in CC group [52], one other found no cases in LE group, one in
435 CC group [56].

436 The RI of subendometrial arteries was significantly lower in LE group than in CC group. The
437 PI of subendometrial arteries was also lower in patients treated with letrozole, but this result
438 was not statistically significant. With lower RI and PI, intrauterine blood supply is better, and
439 there may be a greater chance of improved intrauterine embryonic development. Wang et al.
440 in their RCT found no difference in PI values between the LE or the CC group after Diane-35
441 and metformin pretreatment (therefore, we did not include these articles in our meta-analysis);
442 however, the RI of subendometrial arteries was also significantly lower in LE group [67]. One
443 RCT examined PI and RI of spiral arteries for six months; RI and PI were significantly lower
444 in letrozole group [68]. Of the RCTs included in our qualitative analysis (**Table 2**), one also
445 found significantly lower RI and PI of subendometrial arteries in LE group (they used an
446 increasing drug dose and examined several cycles, so they were not included in our meta-
447 analysis) [57]. Two found significantly higher endometrial vascularization index, flow index
448 and vascularization flow index in LE group, and no significant difference in RI and PI of
449 uterine arteries between the two groups [1, 5]. One found that the detection rate of
450 endometrial-subendometrial blood flow was significantly lower in LE group [19]. One found
451 significantly higher systolic velocity/diastolic velocity of subendometrial arteries and a
452 significantly negative correlation in vascular endothelial growth factor concentration with
453 endometrial RI in LE group, although there was no similar correlation in CC group [15]. One
454 found significantly higher vascular endothelial growth factor and integrin alpha v β 3
455 concentrations in uterine fluid in LE group [5].

456 We obtained results similar to the majority of previous meta-analyses, with the difference that
457 we also highlighted that a better effect can be achieved with the use of LE compared to CC,
458 even in one cycle. We are the first to use a meta-analysis to confirm the result that the use of
459 LE might be beneficial for subendometrial circulation compared to CC, which may explain the
460 significant increase in the pregnancy rate among women with PCOS treated with letrozole.
461 The previously mentioned changes in the subendometrial circulation are very early changes
462 after one cycle, which may explain the differences in significance between RI and PI values.
463 With longer-term use, the differences might also become significant for the PI values.

464 **Strengths and limitations**

465 We used only randomized trials for our meta-analysis. The unique quality of this meta-
466 analysis is that we separated and systematized the results of previous studies on women with
467 PCOS treated with LE or CC according to whether the patients were followed for one or more
468 cycles and whether they received a fixed or increasing drug dose used to induce ovulation. In
469 this way, in contrast to previous meta-analyses, we have reduced the possibility of distortion
470 that could be resulted by a quantitative analysis after combining the above research results.
471 For a quantitative analysis, we found sufficient data only from research studies that used fix
472 doses of the drugs over one cycle.
473 Only a moderate number of studies could be included because the results of patients examined
474 over one cycle could not be combined with the total results of patients examined over several
475 cycles, nor with the results of patients whose medication dose was increased during the
476 examination, if necessary, in order to provide accurate data. Furthermore, not all eligible
477 studies used the same drug dose of LE or CC.
478 Another limitation is the presence of moderate and high risk of bias in some of the domains.

479 **Implications for practice and research**

480 The significance of immediate application of research findings in clinical practice cannot be
481 underestimated [69]. On the basis of the results of research findings we have analyzed, we can
482 claim that LE should be considered for introduction into clinical practice worldwide among
483 women with PCOS as a first-line oral ovulation induction drug. On the basis of our very
484 encouraging results, we suggest further prospective data collection on subendometrial arterial
485 circulation in women with PCOS during their treatment with letrozole for OI.

486 In the future, in order to provide more accurate data, it would be important to conduct as
487 many research studies with the same number of cycles as possible and to accurately record the
488 effects observed with each drug dose, to the extent that the dose of LE and CC is increased
489 during the study.

490

491 **Conclusion**

492 Our results show that letrozole is an effective therapeutic option for the treatment OI in
493 patients with PCOS. Comparing LE with CC, which is the gold standard drug for OI, we can
494 claim that the administration of LE resulted higher ovulation rates, thicker endometrium,
495 lower RI of subendometrial arteries, and higher pregnancy rates. Lower RI in the
496 subendometrial arteries can not only increase the chance of embryo implantation but also
497 improve embryo development. For the above reasons, we recommend that LE should be
498 considered as a first-line drug for ovulation induction.

499

500

501

502

503

504

505

506

507

508

509

510

511

512

513

514

515

516 **Acknowledgments**

517 None.

518

519

520

521

522

523

524

525

526

527

528

529

530

531

532

533 **References**

- 534 1. Wang L, Wen X, Lv S, Zhao J, Yang T, Yang X. Comparison of endometrial
535 receptivity of clomiphene citrate versus letrozole in women with polycystic ovary syndrome:
536 a randomized controlled study. *Gynecol Endocrinol*. 2019;35(10):862-5. doi:
537 10.1080/09513590.2019.1612358. PubMed PMID: rayyan-906439176.
- 538 2. Fauser BC, Tarlatzis BC, Rebar RW, Legro RS, Balen AH, Lobo R, et al. Consensus
539 on women's health aspects of polycystic ovary syndrome (PCOS): the Amsterdam
540 ESHRE/ASRM-Sponsored 3rd PCOS Consensus Workshop Group. *Fertil Steril*.
541 2012;97(1):28-38.e25. Epub 20111206. doi: 10.1016/j.fertnstert.2011.09.024. PubMed PMID:
542 22153789.
- 543 3. Adams J, Polson DW, Franks S. Prevalence of polycystic ovaries in women with
544 anovulation and idiopathic hirsutism. *Br Med J (Clin Res Ed)*. 1986;293(6543):355-9. doi:
545 10.1136/bmj.293.6543.355. PubMed PMID: 3089520; PubMed Central PMCID:
546 PMC1341046.
- 547 4. Elsedek MS-E-A, Elmaghraby HAH. Predictors and characteristics of letrozole
548 induced ovulation in comparison with clomiphene induced ovulation in anovulatory PCOS
549 women. *Middle East Fertility Society Journal*. 2011;16(2):125-30. doi:
550 10.1016/j.mefs.2010.11.004.
- 551 5. Wang L, Lv S, Li F, Bai E, Yang X. Letrozole Versus Clomiphene Citrate and Natural
552 Cycle: Endometrial Receptivity During Implantation Window in Women With Polycystic
553 Ovary Syndrome. 2021(1664-2392 (Print)).
- 554 6. Ghahiri A, Mogharehabet N, Mamourian M. Letrozole as the first-line treatment of
555 infertile women with poly cystic ovarian syndrome (PCOS) compared with clomiphene
556 citrate: A clinical trial. *Adv Biomed Res*. 2016;5:6. Epub 20160129. doi: 10.4103/2277-
557 9175.175237. PubMed PMID: 26962508; PubMed Central PMCID: PMC4770610.
- 558 7. Azziz R, Woods KS, Reyna R, Key TJ, Knochenhauer ES, Yildiz BO. The prevalence
559 and features of the polycystic ovary syndrome in an unselected population. *J Clin Endocrinol*
560 *Metab*. 2004;89(6):2745-9. doi: 10.1210/jc.2003-032046. PubMed PMID: 15181052.
- 561 8. Casper RF, Mitwally MF. Review: aromatase inhibitors for ovulation induction.
562 2006(0021-972X (Print)).
- 563 9. Rotterdam ESHRE/ASRM Sponsored PCOS Consensus Workshop Group. Revised
564 2003 consensus on diagnostic criteria and long-term health risks related to polycystic ovary
565 syndrome. 2004(0015-0282 (Print)).
- 566 10. Naseri S. The role of Clomiphene citrate in the treatment of infertility. *J Mazandaran*
567 *Univer Med Sci*. 2004;14:106-23.
- 568 11. Gadalla MA-O, Huang S, Wang R, Norman RJ, Abdullah SA, El Saman AM, et al.
569 Effect of clomiphene citrate on endometrial thickness, ovulation, pregnancy and live birth in
570 anovulatory women: systematic review and meta-analysis. *Ultrasound in Obstetrics &*
571 *Gynecology*. 2018(1469-0705):51(1):64-76. doi: 10.1002/uog.18933.
- 572 12. Mitwally MF, Casper RF. Use of an aromatase inhibitor for induction of ovulation in
573 patients with an inadequate response to clomiphene citrate. *Fertil Steril*. 2001;75(2):305-9.
574 doi: 10.1016/s0015-0282(00)01705-2. PubMed PMID: 11172831.
- 575 13. Morandi P, Rouzier R, Altundag K, Buzdar AU, Theriault RL, Hortobagyi G. The role
576 of aromatase inhibitors in the adjuvant treatment of breast carcinoma: the M. D. Anderson
577 Cancer Center evidence-based approach. *Cancer*. 2004;101(7):1482-9. doi:
578 10.1002/cncr.20522. PubMed PMID: 15378476.
- 579 14. Mauri D, Pavlidis N, Polyzos NP, Ioannidis JP. Survival with aromatase inhibitors and
580 inactivators versus standard hormonal therapy in advanced breast cancer: meta-analysis. *J*
581 *Natl Cancer Inst*. 2006;98(18):1285-91. doi: 10.1093/jnci/djj357. PubMed PMID: 16985247.

- 582 15. Al-Obaidi MT, Ali ZH, Saadi Wi AL, Wasiti Ear AL, Al-Aubaidy H. Impact of
583 letrozole versus clomiphene citrate on endometrial receptivity in Iraqi women with polycystic
584 ovarian syndrome. *Journal of clinical pharmacy and therapeutics*. 2019. PubMed PMID:
585 rayyan-906438017.
- 586 16. Najafi PZ, Noghabi SP, Afzali N, Mohammadzadeh S. Comparing the effect of
587 clomiphene citrate and letrozole on ovulation induction in infertile women with polycystic
588 ovary syndrome. *J Pak Med Assoc*. 2020;70(2):268-71. doi: 10.5455/jpma.267607. PubMed
589 PMID: rayyan-906438739.
- 590 17. Gibbs RS, Haney AF. *Danforth Obstetrics & Gynecology*. China: Lippincott Williams
591 & Wilkins; 2010.
- 592 18. Hamilton A, Piccart M. The third-generation non-steroidal aromatase inhibitors: a
593 review of their clinical benefits in the second-line hormonal treatment of advanced breast
594 cancer. *Ann Oncol*. 1999;10(4):377-84. doi: 10.1023/a:1008368300827. PubMed PMID:
595 10370778.
- 596 19. Selim MF, Borg TF. Letrozole and clomiphene citrate effect on endometrial and
597 subendometrial vascularity in treating infertility in women with polycystic ovary syndrome.
598 *Journal of Gynecologic Surgery*. 2012;28(6):405-10. doi: 10.1089/gyn.2012.0033. PubMed
599 PMID: rayyan-906438965.
- 600 20. Khan MS, Shaikh A, Ratnani R. Ultrasonography and Doppler Study to Predict
601 Uterine Receptivity in Infertile Patients Undergoing Embryo Transfer. *J Obstet Gynaecol*
602 *India*. 2016;66(Suppl 1):377-82. Epub 20150908. doi: 10.1007/s13224-015-0742-5. PubMed
603 PMID: 27651633; PubMed Central PMCID: PMC5016392.
- 604 21. Page MJ, McKenzie JE, Bossuyt PM, Boutron I, Hoffmann TC, Mulrow CD, et al.
605 The PRISMA 2020 statement: an updated guideline for reporting systematic reviews. *Bmj*.
606 2021;372:n71. Epub 20210329. doi: 10.1136/bmj.n71. PubMed PMID: 33782057; PubMed
607 Central PMCID: PMC8005924.
- 608 22. Chandler J, Hopewell S. Cochrane methods--twenty years experience in developing
609 systematic review methods. *Syst Rev*. 2013;2:76. Epub 20130920. doi: 10.1186/2046-4053-2-
610 76. PubMed PMID: 24050381; PubMed Central PMCID: PMC3849105.
- 611 23. Hoeger KM, Dokras A, Piltonen T. Update on PCOS: Consequences, Challenges, and
612 Guiding Treatment. *J Clin Endocrinol Metab*. 2021;106(3):e1071-e83. doi:
613 10.1210/clinem/dgaa839. PubMed PMID: 33211867.
- 614 24. Schünemann HJ, Higgins JPT, Vist GE, Glasziou P, Akl EA, Skoetz N, et al. Chapter
615 14: Completing 'summary of findings' tables and grading the certainty of the evidence. In
616 *Cochrane Handbook for Systematic Reviews of Interventions*. Cochrane: 2022 2022.
- 617 25. R Core T. R: A Language and Environment for Statistical Computing Vienna, Austria:
618 R Foundation for Statistical Computing; 2023. Available from: <https://www.R-project.org/>.
- 619 26. Schwarzer G. *Meta: General Package for Meta-Analysis 2023*. Available from:
620 <https://github.com/guido-s/meta/>
- 621 <https://link.springer.com/book/10.1007/978-3-319-21416-0>.
- 622 27. Harrer M, Cuijpers P, Ebert D. *Doing Meta-Analysis in R*. 2019. doi:
623 10.5281/zenodo.2551803.
- 624 28. Mantel N, Haenszel W. Statistical Aspects of the Analysis of Data From Retrospective
625 Studies of Disease. *Journal of the National Cancer Institute*. 1959;22(4):719-48. doi:
626 10.1093/jnci/22.4.719.
- 627 29. Robins J, Greenland S, N.E. B. A general estimator for the variance of the Mantel-
628 Haenszel odds ratio. *American Journal of Epidemiology*. 1986:719-23. doi:
629 10.1093/oxfordjournals.aje.a114447.
- 630 30. Cooper HM, L.V. H, J.C. V, eds. *The Handbook of Research Synthesis and Meta-*
631 *Analysis*. 2nd ed. . New York: Russell Sage Foundation2009.

- 632 31. Sweeting MJ, Sutton AJ, Lambert PC. What to add to nothing? Use and avoidance of
633 continuity corrections in meta-analysis of sparse data. 2004;23(9):1351-75. doi:
634 10.1002/sim.1761.
- 635 32. Paule RC, Mandel J. Consensus Values and Weighting Factors. Journal of Research of
636 the Nacional Bureau of Standards 1982:377-85. doi: 10.6028/jres.087.022. PubMed Central
637 PMCID: PMC6768160.
- 638 33. Veroniki AA, Jackson D, Viechtbauer W, Bender R, Bowden J, Knapp G, et al.
639 Methods to estimate the between-study variance and its uncertainty in meta-analysis. Research
640 Synthesis Methods. 2015:55–79. doi: 10.1002/jrsm.1164.
- 641 34. Harrer M, Cuijpers P, Furukawa TA, Ebert DD. Doing Meta-Analysis with R: A
642 Hands-On Guide. 1st ed. Boca Raton, FL; London: Chapman & Hall/CRC Press; New York:
643 Chapman and Hall/CRC Press 2021.
- 644 35. Knapp G, Hartung J. Improved tests for a random effects meta-regression with a
645 single covariate. Statistics in Medicine. 2003;22(17):2693-710. doi: 10.1002/sim.1482.
- 646 36. IntHout J, J.P.A. I, Borm GF. The Hartung-Knapp-Sidik-Jonkman method for random
647 effects meta-analysis is straightforward and considerably outperforms the
648 standard DerSimonian-Laird method. BMC Medical Research Methodology. 2014.
- 649 37. Higgins JPT, Thompson SG. Quantifying heterogeneity in a meta-analysis. Statistics
650 in Medicine. 2002;21(11):1539-58. doi: 10.1002/sim.1186.
- 651 38. Egger M, Davey Smith G, Schneider M, Minder C. Bias in meta-analysis detected by
652 a simple, graphical test. BMJ. 1997;315(7109):629-34. doi: 10.1136/bmj.315.7109.629.
653 PubMed PMID: 9310563; PubMed Central PMCID: PMC2127453.
- 654 39. Harbord RM, Ross JH, Sterne JAC. Updated Tests for Small-Study Effects in Meta-
655 Analyses. The Stata Journal: Promoting Communications on Statistics and Stata. 2009:197–
656 210. doi: 10.1177/1536867X09000900202.
- 657 40. Atay V, Cam C, Muhcu M, Cam M, Karateke A. Comparison of letrozole and
658 clomiphene citrate in women with polycystic ovaries undergoing ovarian stimulation. J Int
659 Med Res. 2006;34(1):73-6. doi: 10.1177/147323000603400109. PubMed PMID: rayyan-
660 906438063.
- 661 41. Hendawy SF, Samaha HE, Elkholy MF. Letrozole versus Clomiphene Citrate for
662 Induction of Ovulation in Patients with Polycystic Ovarian Syndrome Undergoing
663 Intrauterine Insemination. Clin Med Insights Reprod Health. 2011;5:11-6. doi:
664 10.4137/cm.rh.S6598. PubMed PMID: rayyan-906438426.
- 665 42. Hussein Z, Al-Obaidi MT, Al-Saadi WI, Selman MO. Comparison of the effect of
666 clomiphene citrate and letrozole on the endometrial parameters of PCOS women. Journal of
667 pharmaceutical sciences and research. 2017;9(11):2291-5. PubMed PMID: rayyan-
668 906438467.
- 669 43. Kar S. Clomiphene citrate or letrozole as first-line ovulation induction drug in infertile
670 PCOS women: a prospective randomized trial. Journal of human reproductive sciences.
671 2012;5(3):262-5. doi: 10.4103/0974-1208.106338. PubMed PMID: rayyan-906438547.
- 672 44. Khakwani M, Parveen R, Yousaf S, Tareen AU. Efficacy of letrozole versus
673 clomiphene citrate on ovulation induction in patients with polycystic ovarian syndrome.
674 Pakistan journal of medical sciences. 2022;38(5):1155-8. doi: 10.12669/pjms.38.5.5565.
675 PubMed PMID: rayyan-906438559.
- 676 45. Mobusher I. Comparison of the Efficacy of Letrozole and Clomiphene Citrate for
677 Ovulation Induction in Infertile Women with Polycystic Ovary Syndrome. . 905 P J M H S
678 2014;VOL. 8 NO.4
- 679 46. Zafar T, Asif F, Naurin R, Majeed T, Mahmood Z. Comparing effectiveness of
680 letrozole versus clomiphene citrate to evaluate the ovulation induction in patients with

- 681 polycystic ovarian syndrome. Pakistan journal of medical and health sciences.
682 2021;15(10):2685-8. doi: 10.53350/pjmhs2115102685. PubMed PMID: rayyan-906439302.
683 47. Al-Shaikh SFMH, Al-Mukhatar EJ, Al-Zubaidy AA, Al-Rubaie BJU, Al-Khuzae L.
684 Use of clomiphene or letrozole for treating women with polycystic ovary syndrome related
685 subfertility in Hilla city. Middle East Fertility Society Journal. 2017;22(2):105-10. doi:
686 10.1016/j.mefs.2016.12.003. PubMed PMID: rayyan-906438019.
687 48. Amer SA, Smith J, Mahran A, Fox P, Fakis A. Double-blind randomized controlled
688 trial of letrozole versus clomiphene citrate in subfertile women with polycystic ovarian
689 syndrome. Hum Reprod. 2017;32(8):1631-8. doi: 10.1093/humrep/dex227. PubMed PMID:
690 28854590; PubMed Central PMCID: PMC5850470.
691 49. Bayar U, Basaran M, Kiran S, Coskun A, Gezer S. Use of an aromatase inhibitor in
692 patients with polycystic ovary syndrome: a prospective randomized trial. Fertility and
693 sterility. 2006;86(5):1447-51. doi: 10.1016/j.fertnstert.2006.04.026. PubMed PMID: rayyan-
694 906438107.
695 50. Legro RS, Brzyski RG, Diamond MP, Coutifaris C, Schlaff WD, Casson P, et al.
696 Letrozole versus clomiphene for infertility in the polycystic ovary syndrome. N Engl J Med.
697 2014;371(2):119-29. doi: 10.1056/NEJMoa1313517. PubMed PMID: rayyan-906438604.
698 51. Roy KK, Baruah J, Singla S, Sharma JB, Singh N, Jain SK, et al. A prospective
699 randomized trial comparing the efficacy of Letrozole and Clomiphene citrate in induction of
700 ovulation in polycystic ovarian syndrome. J Hum Reprod Sci. 2012;5(1):20-5. doi:
701 10.4103/0974-1208.97789. PubMed PMID: 22870010; PubMed Central PMCID:
702 PMC3409915.
703 52. Sakar MN, Oglak SC. Letrozole is superior to clomiphene citrate in ovulation
704 induction in patients with polycystic ovary syndrome. Pakistan Journal of Medical Sciences.
705 2020;36(7):1460-5. doi: 10.12669/pjms.36.7.3345. PubMed PMID: rayyan-906438951.
706 53. Sharief M, Nafee NR. Comparison of letrozole and clomiphene citrate in women with
707 polycystic ovaries undergoing ovarian stimulation. J Pak Med Assoc. 2015;65(11):1149-52.
708 PubMed PMID: 26564281.
709 54. Ray PB, Ray A, Chakraborti PS. Comparison of efficacy of letrozole and clomiphene
710 citrate in ovulation induction in Indian women with polycystic ovarian syndrome. 2012(1432-
711 0711 (Electronic)).
712 55. Bansal S, Goyal M, Sharma C, Shekhar S. Letrozole versus clomiphene citrate for
713 ovulation induction in anovulatory women with polycystic ovarian syndrome: A randomized
714 controlled trial. International Journal of Gynaecology and Obstetrics: the official organ of the
715 International Federation of Gynaecology and Obstetrics. 2020;152(3):345-50. doi:
716 10.1002/ijgo.13375.
717 56. Dehbashi S, Dehbashi, Sa., Kazerooni, T., Robati, M., Alborzi, S., Ebrahim, M.,
718 Parsanezhad, Shadman, P.A. Comparison of the Effects of Letrozole and Clomiphene Citrate
719 on Ovulation and Pregnancy Rate in Patients with Polycystic Ovary Syndrome. Iranian
720 Journal of Medical Sciences. 2009;34 No 1.
721 57. Baruah J, Roy KK, Rahman SM, Kumar S, Sharma JB, Karmakar D. Endometrial
722 effects of letrozole and clomiphene citrate in women with polycystic ovary syndrome using
723 spiral artery Doppler. Arch Gynecol Obstet. 2009;279(3):311-4. doi: 10.1007/s00404-008-
724 0714-4. PubMed PMID: rayyan-906438101.
725 58. He D, Jiang F. Meta-analysis of letrozole versus clomiphene citrate in polycystic
726 ovary syndrome. Reprod Biomed Online. 2011;23(1):91-6. Epub 20110403. doi:
727 10.1016/j.rbmo.2011.03.024. PubMed PMID: 21550852.
728 59. Akinoso-Imran AQ, Adetunji, H. Systematic review and meta-analysis of letrozole
729 and clomiphene citrate in polycystic ovary syndrome. Middle East Fertility Society Journal.
730 2018. doi: 10.1016/J.MEFS.2018.03.008.

- 731 60. Mbi Feh MK, Wadhwa, R. Clomiphene. Island Updated Jun 27, 2022.
- 732 61. Tsiami AP, Goulis DG, Sotiriadis AI, Kolibianakis EM. Higher ovulation rate with
733 letrozole as compared with clomiphene citrate in infertile women with polycystic ovary
734 syndrome: a systematic review and meta-analysis. *Hormones (Athens)*. 2021;20(3):449-61.
735 Epub 20210525. doi: 10.1007/s42000-021-00289-z. PubMed PMID: 34033068.
- 736 62. Liu Z, Geng Y, Huang Y, Hu R, Li F, Song Y, et al. Letrozole Compared With
737 Clomiphene Citrate for Polycystic Ovarian Syndrome: A Systematic Review and Meta-
738 analysis. *Obstet Gynecol*. 2023;141(3):523-34. Epub 20230202. doi:
739 10.1097/aog.0000000000005070. PubMed PMID: 36735392.
- 740 63. Wang R, Li W, Bordewijk EM, Legro RS, Zhang H, Wu X, et al. First-line ovulation
741 induction for polycystic ovary syndrome: an individual participant data meta-analysis. *Hum*
742 *Reprod Update*. 2019;25(6):717-32. doi: 10.1093/humupd/dmz029. PubMed PMID:
743 31647106.
- 744 64. Roque M, Tostes AC, Valle M, Sampaio M, Geber S. Letrozole versus clomiphene
745 citrate in polycystic ovary syndrome: systematic review and meta-analysis. *Gynecol*
746 *Endocrinol*. 2015;31(12):917-21. Epub 20151019. doi: 10.3109/09513590.2015.1096337.
747 PubMed PMID: 26479460.
- 748 65. Hu S, Yu Q, Wang Y, Wang M, Xia W, Zhu C. Letrozole versus clomiphene citrate in
749 polycystic ovary syndrome: a meta-analysis of randomized controlled trials. *Arch Gynecol*
750 *Obstet*. 2018;297(5):1081-8. Epub 20180201. doi: 10.1007/s00404-018-4688-6. PubMed
751 PMID: 29392438.
- 752 66. Chasen ST. Twin pregnancy: Overview Updated May 22, 2023. Available from:
753 <https://www.uptodate.com/contents/twin-pregnancy-overview#>.
- 754 67. Wang L, Lü SL, Mao WJ, Bai E. Effects of clomiphene citrate and letrozole on uterine
755 artery and subendometrial blood flow in patients with polycystic ovarian syndrome. *Journal*
756 *of Xi'an Jiaotong University (Medical Sciences)*. 2017;38(5):734-9. doi:
757 10.7652/jdyxb201705023. PubMed PMID: ryyan-906439172.
- 758 68. Sharif JH. The Induction of Ovulation in Women with Polycystic Ovarian Syndrome
759 Via: Letrozole vs Clomiphene Citrate. *Journal of Pharmaceutical Negative Results*.
760 2022;13(1).
- 761 69. Hegyi P, Petersen OH, Holgate S, Erőss B, Garami A, Szakács Z, et al. Academia
762 Europaea Position Paper on Translational Medicine: The Cycle Model for Translating
763 Scientific Results into Community Benefits. *J Clin Med*. 2020;9(5). Epub 20200519. doi:
764 10.3390/jcm9051532. PubMed PMID: 32438747; PubMed Central PMCID: PMC7290380.
- 765
- 766
- 767

768 **Supporting Information**

769 **S1 Table. Summary of Findings Table.** Legend: CI: confidence interval, MD: mean
770 difference, OR: odds ratio

771 **S2 Table. PRISMA 2020 Checklist.** Legend: -

772 **S1 Fig. Forest plot for endometrial thickness (ET) - ovulating patients only.** Legend: LE-
773 letrozole; CC-clomiphene citrate; N-number of patients; MD-mean difference; SD-standard
774 deviation; CI-confidence interval; p-p-value.

775 **S2 Fig. Forest plot for number of dominant follicles – all patients.** Legend: LE-letrozole;
776 CC-clomiphene citrate; N-number of patients; MD-mean difference; SD-standard deviation;
777 CI-confidence interval; p-p-value.

778 **S3 Fig. Forest plot for number of dominant follicles – ovulating patients only.** Legend:
779 LE-letrozole; CC-clomiphene citrate; N-number of patients; MD-mean difference; SD-
780 standard deviation; CI-confidence interval; p-p-value.

781 **S4 Fig. Forest plot for diameter of dominant follicles.** Legend: LE-letrozole; CC-
782 clomiphene citrate; N-number of patients; MD-mean difference; SD-standard deviation; CI-
783 confidence interval; p-p-value.

784 **S5 Fig. Forest plot for pregnancy rate - ovulating patients only.** Legend: LE-letrozole;
785 CC-clomiphene citrate; N-number of patients; OR-odds ratio; CI-confidence interval; p-p-
786 value.

787 **S6 Fig. Forest plot for multiple pregnancy rate.** Legend: LE-letrozole; CC-clomiphene
788 citrate; N-number of patients; OR-odds ratio; CI-confidence interval; p-p-value.

789 **S7 Fig. Forest plot for miscarriage rate.** Legend: LE-letrozole; CC-clomiphene citrate; N-
790 number of patients; OR-odds ratio; CI-confidence interval; p-p-value.

791 **S8 Fig: Forest plot for monofollicular development rate.** Legend: LE-letrozole; CC-
792 clomiphene citrate; N-number of patients; OR-odds ratio; CI-confidence interval; p-p-value.

793 **S9 Fig: Forest plot for multifollicular development rate.** Legend: LE-letrozole; CC-
794 clomiphene citrate; N-number of patients; OR-odds ratio; CI-confidence interval; p-p-value.

795 **S10 Fig. Funnel plot for endometrial thickness (ET) – all patients.** Legend: -

796 **S11 Fig. Funnel plot for ovulation rate.** Legend: -

797 **S12 Fig. Funnel plot for pregnancy rate – all patients.** Legend: -

798 **S13 Fig. Funnel plot for resistance index (RI) of subendometrial arteries.** Legend: -

799 **S14 Fig. Funnel plot for pulsatility index (PI) of subendometrial arteries.** Legend: -

800 **S15 Fig. Risk of bias assessment of the studies included in the meta-analysis assessing**
801 **endometrial thickness (ET) [1, 4, 5, 16, 19, 41, 43-46, 56] using the revised tool for**
802 **assessing risk of bias in randomized trials (Rob 2).** Legend: +: low risk; !: some concerns; -
803 : high risk

804 **S16 Fig. Risk of bias assessment of the studies included in the meta-analysis assessing**
805 **endometrial thickness (ET) [1, 4, 5, 16, 19, 41, 43-46, 56] broken down to tools, shown in**
806 **percentage.**

807 **S17 Fig. Risk of bias assessment of the studies included in the meta-analysis assessing**
808 **number of dominant follicles [1, 4, 5, 15, 16, 19, 40, 41, 56] using the revised tool for**
809 **assessing risk of bias in randomized trials (Rob 2).** Legend: +: low risk; !: some concerns; -
810 : high risk

811 **S18 Fig. Risk of bias assessment of the studies included in the meta-analysis assessing**
812 **number of dominant follicles [1, 4, 5, 15, 16, 19, 40, 41, 56] broken down to tools, shown**
813 **in percentage.**

814 **S19 Fig. Risk of bias assessment of the studies included in the meta-analysis assessing**
815 **diameter of dominant follicles [1, 5, 15, 16] using the revised tool for assessing risk of**
816 **bias in randomized trials (Rob 2). Legend: +: low risk; !: some concerns; -: high risk**

817 **S20 Fig. Risk of bias assessment of the studies included in the meta-analysis assessing**
818 **diameter of dominant follicles [1, 5, 15, 16] broken down to tools, shown in percentage.**

819 **S21 Fig. Risk of bias assessment of the studies included in the meta-analysis assessing**
820 **mono-and multifollicular development [43, 45, 46] rate using the revised tool for**
821 **assessing risk of bias in randomized trials (Rob 2). Legend: +: low risk; !: some concerns; -**
822 **: high risk**

823 **S22 Fig. Risk of bias assessment of the studies included in the meta-analysis assessing**
824 **mono-and multifollicular development [43, 45, 46] rate broken down to tools, shown in**
825 **percentage.**

826 **S23 Fig. Risk of bias assessment of the studies included in the meta-analysis assessing**
827 **ovulation rate [1, 4, 5, 19, 42-44, 46, 56] using the revised tool for assessing risk of bias in**
828 **randomized trials (Rob 2). Legend: +: low risk; !: some concerns; -: high risk**

829 **S24 Fig. Risk of bias assessment of the studies included in the meta-analysis assessing**
830 **ovulation rate [1, 4, 5, 19, 42-44, 46, 56] broken down to tools, shown in percentage.**

831 **S25 Fig. Risk of bias assessment of the studies included in the meta-analysis assessing**
832 **pregnancy rate [4-6, 15, 16, 19, 40, 42, 43, 45, 56] using the revised tool for assessing risk**
833 **of bias in randomized trials (Rob 2). Legend: +: low risk; !: some concerns; -: high risk**

834

835 **S26 Fig. Risk of bias assessment of the studies included in the meta-analysis assessing**
836 **pregnancy rate [4-6, 15, 16, 19, 40, 42, 43, 45, 56] broken down to tools, shown in**
837 **percentage.**

838 **S27 Fig. Risk of bias assessment of the studies included in the meta-analysis assessing**
839 **single and multiple pregnancy rate [6, 16, 19, 40, 41, 45, 56] using the revised tool for**
840 **assessing risk of bias in randomized trials (Rob 2). Legend: +: low risk; !: some concerns; -**
841 **: high risk**

842 **S28 Fig. Risk of bias assessment of the studies included in the meta-analysis assessing**
843 **single and multiple pregnancy rate [6, 16, 19, 40, 41, 45, 56] broken down to tools, shown**
844 **in percentage.**

845 **S29 Fig. Risk of bias assessment of the studies included in the meta-analysis assessing**
846 **rate of miscarriage [6, 16, 43, 56] using the revised tool for assessing risk of bias in**
847 **randomized trials (Rob 2). Legend: +: low risk; !: some concerns; -: high risk**

848 **S30 Fig. Risk of bias assessment of the studies included in the meta-analysis assessing**
849 **rate of miscarriage [6, 16, 43, 56] broken down to tools, shown in percentage.**

850 **S31 Fig. Risk of bias assessment of the studies included in the meta-analysis assessing**
851 **resistance index (RI) of subendometrial arteries [1, 15, 19] using the revised tool for**
852 **assessing risk of bias in randomized trials (Rob 2). Legend: +: low risk; !: some concerns; -**
853 **: high risk**

854 **S32 Fig. Risk of bias assessment of the studies included in the meta-analysis assessing**
855 **resistance index (RI) of subendometrial arteries [1, 15, 19] broken down to tools, shown**
856 **in percentage.**

857 **S33 Fig. Risk of bias assessment of the studies included in the meta-analysis assessing**
858 **pulsatility index (PI) of subendometrial arteries [1, 15, 19] using the revised tool for**

859 **assessing risk of bias in randomized trials (Rob 2).** Legend: +: low risk; !: some concerns; -
860 : high risk

861 **S34 Fig. Risk of bias assessment of the studies included in the meta-analysis assessing**
862 **pulsatility index (PI) of subendometrial arteries [1, 15, 19] broken down to tools, shown**
863 **in percentage.**

864 **S35 Fig. Risk of bias assessment of the studies included in the systematic review**
865 **assessing rate of endometrial thickness (ET) [15, 42, 47-49, 51-55, 57] using the revised**
866 **tool for assessing risk of bias in randomized trials (Rob 2).** Legend: +: low risk; !: some
867 concerns; -: high risk

868 **S36 Fig. Risk of bias assessment of the studies included in the systematic review**
869 **assessing rate of endometrial thickness (ET) [15, 42, 47-49, 51-55, 57] broken down to**
870 **tools, shown in percentage.**

871 **S37 Fig. Risk of bias assessment of the studies included in the systematic review**
872 **assessing endometrial volume (EV) [1, 5] using the revised tool for assessing risk of bias**
873 **in randomized trials (Rob 2).** Legend: +: low risk; !: some concerns; -: high risk

874 **S38 Fig. Risk of bias assessment of the studies included in the systematic review**
875 **assessing endometrial volume (EV) [1, 5] broken down to tools, shown in percentage.**

876 **S39 Fig. Risk of bias assessment of the studies included in the systematic review**
877 **assessing endometrial pattern and/or echogenicity [1, 42, 48] using the revised tool for**
878 **assessing risk of bias in randomized trials (Rob 2).** Legend: +: low risk; !: some concerns; -
879 : high risk

880 **S40 Fig. Risk of bias assessment of the studies included in the systematic review**
881 **assessing endometrial pattern and/or echogenicity [1, 42, 48] broken down to tools,**
882 **shown in percentage.**

883 **S41 Fig. Risk of bias assessment of the studies included in the systematic review**
884 **assessing rate of number of dominant follicles [47, 49, 51-54, 57] using the revised tool**
885 **for assessing risk of bias in randomized trials (Rob 2). Legend: +: low risk; !: some**
886 **concerns; -: high risk**

887 **S42 Fig. Risk of bias assessment of the studies included in the systematic review**
888 **assessing rate of number of dominant follicles [47, 49, 51-54, 57] broken down to tools,**
889 **shown in percentage.**

890 **S43 Fig. Risk of bias assessment of the studies included in the systematic review**
891 **assessing rate of diameter of dominant follicles [47, 54] using the revised tool for**
892 **assessing risk of bias in randomized trials (Rob 2). Legend: +: low risk; !: some concerns; -**
893 **: high risk**

894 **S44 Fig. Risk of bias assessment of the studies included in the systematic review**
895 **assessing rate of diameter of dominant follicles [47, 54] broken down to tools, shown in**
896 **percentage.**

897 **S45 Fig. Risk of bias assessment of the studies included in the systematic review**
898 **assessing monofollicular development cycles [54, 55] using the revised tool for assessing**
899 **risk of bias in randomized trials (Rob 2). Legend: +: low risk; !: some concerns; -: high risk**

900 **S46 Fig. Risk of bias assessment of the studies included in the systematic review**
901 **assessing monofollicular development cycles [54, 55] broken down to tools, shown in**
902 **percentage.**

903 **S47 Fig. Risk of bias assessment of the studies included in the systematic review**
904 **assessing ovulation rate [48, 50-53, 55] using the revised tool for assessing risk of bias in**
905 **randomized trials (Rob 2). Legend: +: low risk; !: some concerns; -: high risk**

906 **S48 Fig. Risk of bias assessment of the studies included in the systematic review**
907 **assessing ovulation rate [48, 50-53, 55] broken down to tools, shown in percentage.**

908 **S49 Fig. Risk of bias assessment of the studies included in the systematic review**
909 **assessing pregnancy rate [47-55, 57] using the revised tool for assessing risk of bias in**
910 **randomized trials (Rob 2). Legend: +: low risk; !: some concerns; -: high risk**

911 **S50 Fig. Risk of bias assessment of the studies included in the systematic review**
912 **assessing pregnancy rate [47-55, 57] broken down to tools, shown in percentage.**

913 **S51 Fig. Risk of bias assessment of the studies included in the systematic review**
914 **assessing number of multiple pregnancies [49-52, 57] using the revised tool for assessing**
915 **risk of bias in randomized trials (Rob 2). Legend: +: low risk; !: some concerns; -: high risk**

916 **S52 Fig. Risk of bias assessment of the studies included in the systematic review**
917 **assessing number of multiple pregnancies [49-52, 57] broken down to tools, shown in**
918 **percentage.**

919 **S53 Fig. Risk of bias assessment of the studies included in the systematic review**
920 **assessing number of miscarriages [47, 49-52, 54] using the revised tool for assessing risk**
921 **of bias in randomized trials (Rob 2). Legend: +: low risk; !: some concerns; -: high risk**

922 **S54 Fig. Risk of bias assessment of the studies included in the systematic review**
923 **assessing number of miscarriages [47, 49-52, 54] broken down to tools, shown in**
924 **percentage.**

925 **S55 Fig. Risk of bias assessment of the studies included in the systematic review**
926 **assessing live birth rate [48-52, 56] using the revised tool for assessing risk of bias in**
927 **randomized trials (Rob 2). Legend: +: low risk; !: some concerns; -: high risk**

928 **S56 Fig. Risk of bias assessment of the studies included in the systematic review**
929 **assessing live birth rate [48-52, 56] broken down to tools, shown in percentage.**

930 **S57 Fig. Risk of bias assessment of the studies included in the systematic review**
931 **assessing number of ectopic pregnancies [6] using the revised tool for assessing risk of**
932 **bias in randomized trials (Rob 2). Legend: +: low risk; !: some concerns; -: high risk**

933 **S58 Fig. Risk of bias assessment of the studies included in the systematic review**
934 **assessing number of ectopic pregnancies [6] broken down to tools, shown in percentage.**

935 **S59 Fig. Risk of bias assessment of the studies included in the systematic review**
936 **assessing number of fetal anomalies [48, 50, 52, 54, 56] using the revised tool for**
937 **assessing risk of bias in randomized trials (Rob 2). Legend: +: low risk; !: some concerns; -**
938 **: high risk**

939 **S60 Fig. Risk of bias assessment of the studies included in the systematic review**
940 **assessing number of fetal anomalies [48, 50, 52, 54, 56] broken down to tools, shown in**
941 **percentage.**

942 **S61 Fig. Risk of bias assessment of the studies included in the systematic review**
943 **assessing endometrial vascularization index (VI), flow index (FI), vascularization flow**
944 **index (VFI) and detection rate of endometrial-subendometrial blood flow [1, 5, 19] using**
945 **the revised tool for assessing risk of bias in randomized trials (Rob 2). Legend: +: low**
946 **risk; !: some concerns; -: high risk**

947 **S62 Fig. Risk of bias assessment of the studies included in the systematic review**
948 **assessing endometrial vascularization index (VI), flow index (FI), vascularization flow**
949 **index (VFI) detection rate of endometrial-subendometrial blood flow [1, 5, 19] broken**
950 **down to tools, shown in percentage.**

951 **S63 Fig. Risk of bias assessment of the studies included in the systematic review**
952 **assessing systolic velocity (SV)/diastolic velocity (DV) of subendometrial arteries [15]**
953 **using the revised tool for assessing risk of bias in randomized trials (Rob 2). Legend: +:**
954 **low risk; !: some concerns; -: high risk**

955 **S64 Fig. Risk of bias assessment of the studies included in the systematic review**
956 **assessing systolic velocity (SV)/diastolic velocity (DV) of subendometrial arteries**
957 **[15]broken down to tools, shown in percentage.**

958 **S65 Fig. Risk of bias assessment of the studies included in the systematic review**
959 **assessing resistance index (RI) and pulsatility index (PI) of uterine arteries [1, 5] using**
960 **the revised tool for assessing risk of bias in randomized trials (Rob 2). Legend: +: low**
961 **risk; !: some concerns; -: high risk**

962 **S66 Fig. Risk of bias assessment of the studies included in the systematic review**
963 **assessing resistance index (RI) and pulsatility index (PI) of uterine arteries [1, 5] broken**
964 **down to tools, shown in percentage.**

965 **S67 Fig. Risk of bias assessment of the studies included in the systematic review**
966 **assessing vascular endothelial growth factor (VEGF) and/or integrin alpha v β 3 [5, 15]**
967 **using the revised tool for assessing risk of bias in randomized trials (Rob 2). Legend: +:**
968 **low risk; !: some concerns; -: high risk**

969 **S68 Fig. Risk of bias assessment of the studies included in the systematic review**
970 **assessing vascular endothelial growth factor (VEGF) and/or integrin alpha v β 3 [5, 15]**
971 **broken down to tools, shown in percentage.**

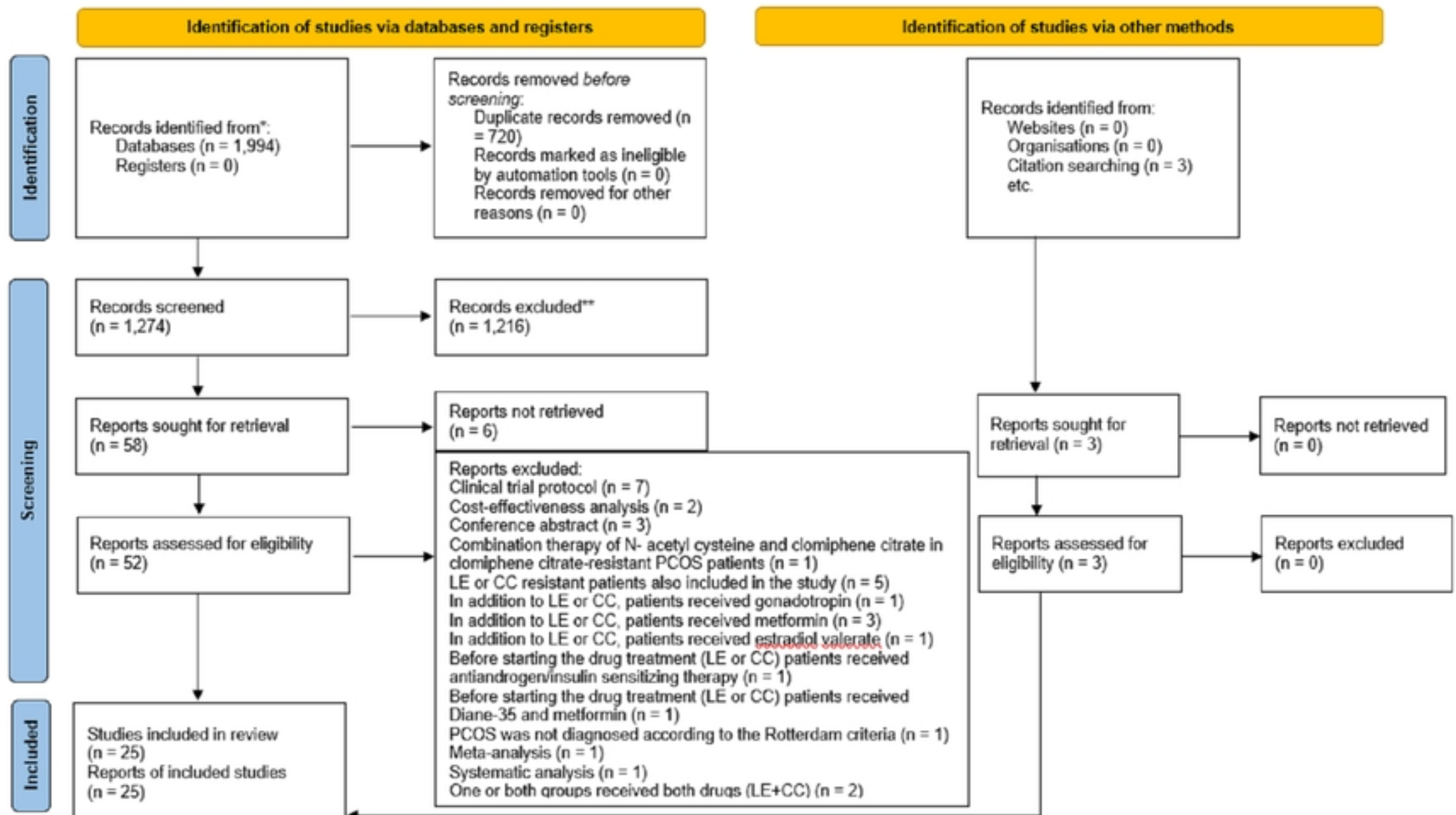
972 **S69 Fig. Risk of bias assessment of the studies included in the systematic review**
973 **assessing resistance index (RI) and pulsatility index (PI) of subendometrial arteries [57]**

974 **using the revised tool for assessing risk of bias in randomized trials (Rob 2) Legend: +:**
975 **low risk; !: some concerns; -: high risk**

976 **S70 Fig. Risk of bias assessment of the studies included in the systematic review**
977 **assessing resistance index (RI) and pulsatility index (PI) of subendometrial arteries [57]**
978 **broken down to tools, shown in percentage. Legend: +: low risk; !: some concerns; -: high**
979 **risk**

Fig 1. PRISMA (Page et al., 2021) flow diagram

PRISMA 2020 flow diagram for new systematic reviews which included searches of databases, registers and other sources

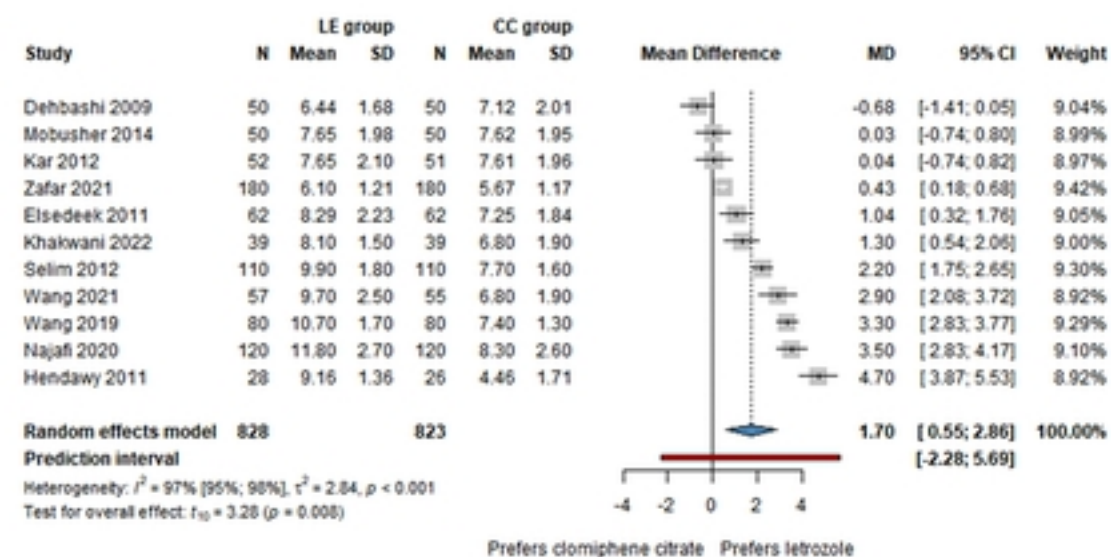


*Consider, if feasible to do so, reporting the number of records identified from each database or register searched (rather than the total number across all databases/registers).
**If automation tools were used, indicate how many records were excluded by a human and how many were excluded by automation tools.

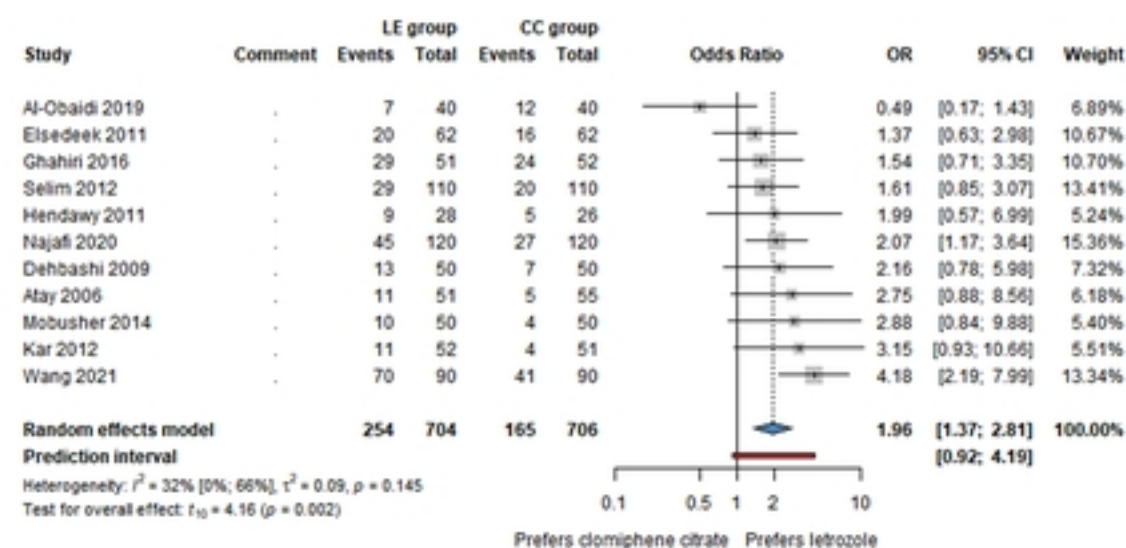
Figure

Fig 2. Forest plots for the following outcomes: A) endometrial thickness (ET) - all patients; B) ovulation rate; C) pregnancy rate – all patients

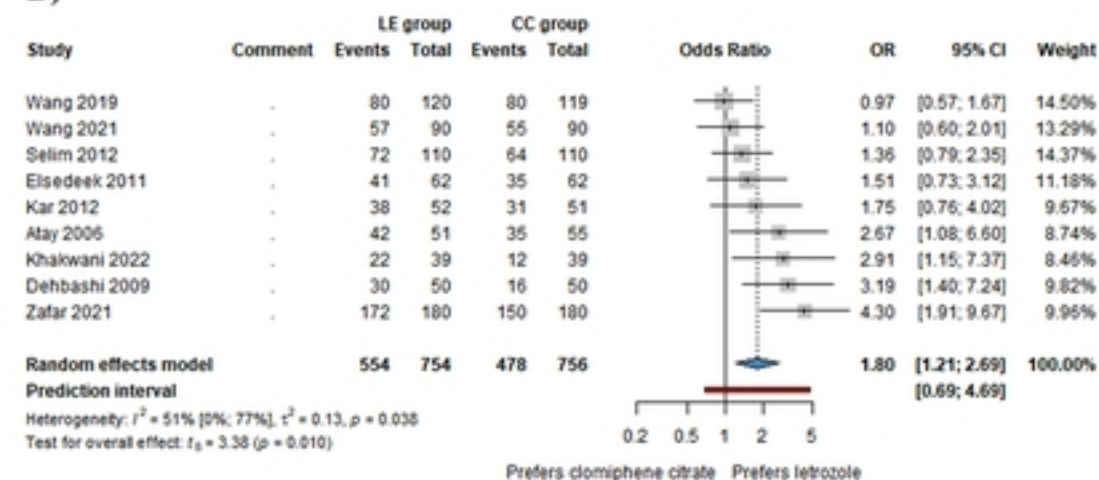
A)



C)



B)

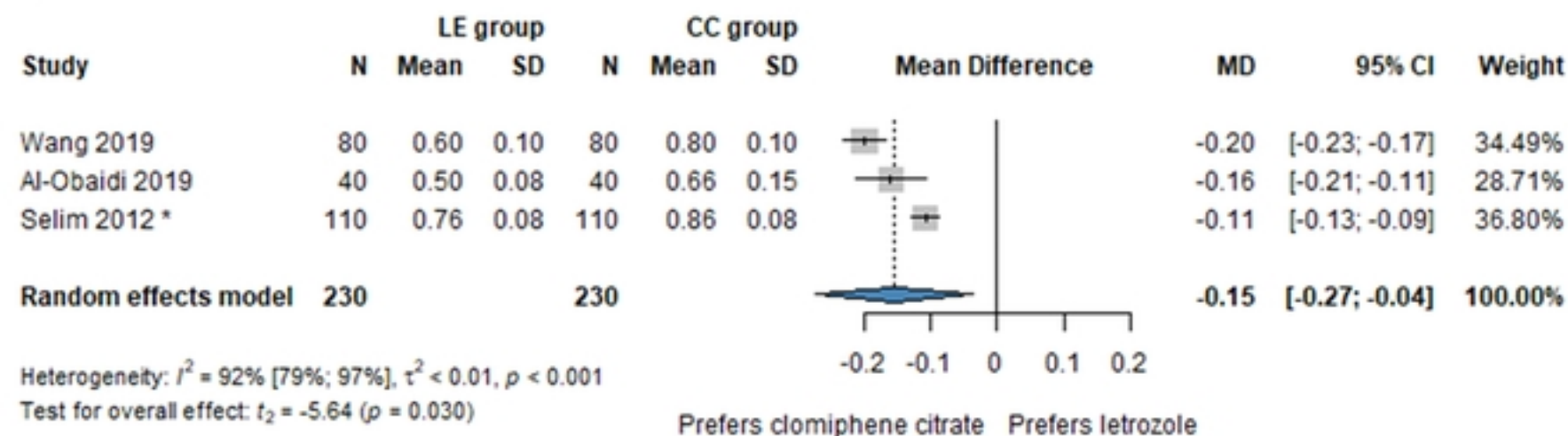


LE-letrozole; CC-clomiphene citrate; N-number of patients; MD-mean difference; SD-standard deviation; OR-odds ratio; CI-confidence interval; p-p-value

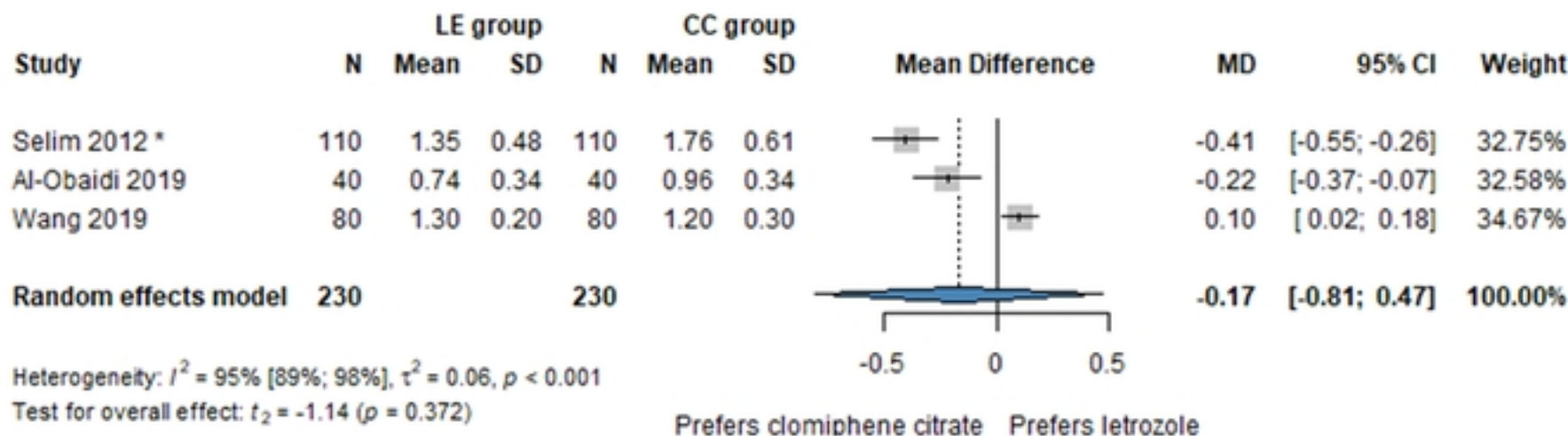
Figure

Fig 3. Forest plots for subendometrial circulation: A) resistance index (RI) of subendometrial arteries; B) pulsatility index (PI) of subendometrial arteries

A)



B)



LE-letrozole; CC-clomiphene citrate; N-number of patients; MD-mean difference; SD-standard deviation; CI-confidence interval; p-p-value

Figure