

1 *Pneumocystis jirovecii* pneumonia mortality risk associated with preceding long-term
2 steroid use for the underlying disease: a multicenter, retrospective cohort study.

3

4 Kohei Miyake ^{1*}, Satoru Senoo ^{2, #a}, Ritsuya Shiiba ³, Junko Itano ⁴, Goro Kimura ⁴,
5 Tatsuyuki Kawahara ⁵, Tomoki Tamura ⁶, Kenichiro Kudo ⁷, Tetsuji Kawamura ¹,
6 Yasuharu Nakahara ¹, Hisao Higo ², Daisuke Himeji ³, Nagio Takigawa ⁵, Nobuaki
7 Miyahara ², and Okayama Respiratory Disease Study Group (ORDSG) [^]

8

9 ¹ Department of Respiratory Medicine, National Hospital Organization Himeji Medical
10 Center, Himeji, Japan

11 Position: Medical Staff

12 ² Department of Hematology, Oncology and Respiratory Medicine, Okayama University
13 Graduate School of Medicine, Dentistry, and Pharmaceutical Sciences, Okayama,
14 Japan.

15 ³ Department of Internal Medicine, Miyazaki Prefectural Miyazaki Hospital, Miyazaki,
16 Japan

17 ⁴ Department of Allergy and Respiratory Medicine, National Hospital Organization
18 Minami-Okayama Medical Center, Okayama, Japan

19 ⁵ Department of General Internal Medicine 4, Kawasaki Medical School, Okayama,
20 Japan

21 ⁶ Department of Respiratory Medicine, National Hospital Organization Iwakuni Clinical
22 Center, Iwakuni, Japan

23 ⁷ Department of Respiratory Medicine, National Hospital Organization Okayama
24 Medical Center, Okayama, Japan

NOTE: This preprint reports new research that has not been certified by peer review and should not be used to guide clinical practice.

25 #a 26 Current Address: Department of Respiratory Medicine, National Hospital

26 Organization Fukuyama Medical Center, Fukuyama, Japan

27

28 *Corresponding Author: Kohei Miyake

29 E-mail: miyakou1723@yahoo.co.jp

30

31 ^ ORDSG is provided in the Acknowledgments.

32

33 **ABSTRACT**

34 **Objective:** Long-term steroid use increases the risk of developing Pneumocystis
35 pneumonia (PcP), but there are limited reports on the relation of long-term steroid and
36 PcP mortality.

37 **Methods:** Retrospective multicenter study to identify risk factors for PcP mortality,
38 including average steroid dose before the first visit for PcP in non-human
39 immunodeficiency virus (HIV)-PcP patients. We generated receiver operating
40 characteristic (ROC) curves for 90-day all-cause mortality and the mean daily steroid
41 dose per unit body weight in the preceding 10 to 90 days in 10-day increments. Patients
42 were dichotomized by 90-day mortality and propensity score-based stabilized inverse
43 probability of treatment weighting (IPTW) adjusted covariates of age, sex, and
44 underlying disease. Multivariate analysis with logistic regression assessed whether
45 long-term corticosteroid use affected outcome.

46 **Results:** Of 133 patients with non-HIV-PcP, 37 died within 90 days of initial diagnosis.
47 The area under the ROC curve for 1-40 days was highest, and the optimal cutoff point
48 of median adjunctive corticosteroid dosage was 0.34 mg/kg/day. Past steroid dose,
49 underlying interstitial lung disease and emphysema, lower serum albumin and lower
50 lymphocyte count, higher lactate dehydrogenase, use of therapeutic pentamidine and
51 therapeutic high-dose steroids were all significantly associated with mortality.
52 Underlying autoimmune disease, past immunosuppressant use, and a longer time from
53 onset to start of treatment, were associated lower mortality. Logistic regression analysis
54 after adjusting for age, sex, and underlying disease with IPTW revealed that steroid
55 dose 1-40 days before the first visit for PcP (per 0.1 mg/kg/day increment, odds ratio
56 1.36 [95% confidence interval = 1.16-1.66], $P < 0.001$), low lymphocyte counts, and high

57 lactate dehydrogenase level were independent mortality risk factor, while respiratory
58 failure, early steroid, and sulfamethoxazole/trimethoprim for PcP treatment did not.

59 **Conclusion:** A steroid dose before PcP onset was strongly associated with 90-day
60 mortality in non-HIV-PcP patients, emphasizing the importance of appropriate
61 prophylaxis especially in this population.

62

63 **Introduction**

64 *Pneumocystis pneumonia* (PcP), caused by the yeast-like fungus *Pneumocystis jirovecii*,
65 occurs primarily in immunocompromised hosts [1]. Historically, PcP was initially found
66 in human immunodeficiency virus (HIV) patients but has increased among non-HIV
67 subjects in parallel with the increased use of immunosuppressive drugs including
68 corticosteroids [2-5]. PcP can lead to respiratory failure, a potentially life-threatening
69 condition; the reported mortality rate for non-HIV-PcP is higher than for HIV-
70 associated PcP (HIV-PcP) [5-7]. In non-HIV-PcP, higher doses of corticosteroids are
71 reported to be the most important risk factor [3,8], and in patients with systemic
72 autoimmune diseases, higher doses of corticosteroids are reported to increase the risk of
73 developing PcP [9]. In guidelines for treating hematologic and solid tumors [10, 11],
74 primary prevention of PcP is recommended for patients with prolonged steroid use (>20
75 mg/day equivalent of prednisone for 4 weeks or ≥ 1 month). Although the efficacy of
76 sulfamethoxazole/trimethoprim (TMP-SMX) prophylaxis for the prevention of PcP is
77 well established [12-15], long-term administration of TMP-SMX can cause a variety of
78 side effects, including thrombocytopenia, toxemia, liver dysfunction, and electrolyte
79 abnormalities [16]. The therapeutic effect of corticosteroids on PcP is complex. These
80 drugs are well-established as therapy for HIV-PcP patients, blunting the inflammatory

81 response induced by anti-pneumocystis treatment, preventing respiratory
82 decompensation failure, and decreasing mortality [17, 18]. However, in non-HIV
83 patients, early addition of corticosteroids to anti-pneumocystis therapy was not
84 associated with improved survival outcomes [19-26]. Furthermore, it has even been
85 reported that high steroid doses at diagnosis [27] or long-term pre-onset steroids [28,
86 29] were predictors of poor prognosis.

87 Corticosteroid use for underlying disease may affect mortality risk in PcP [27-30], but
88 studies of dose and duration that affect mortality are lacking. Details on the duration and
89 weight-corrected intensity of steroid loading are also needed, given considerations of
90 average body weight due to racial differences, as well as its mechanism of action in
91 causing late immunosuppression. We therefore studied the impact of long-term
92 corticosteroid treatment for underlying disease on mortality of PcP patients. This
93 retrospective observational study aimed to identify risk factors for poor prognosis in
94 non-HIV-PcP, with a particular focus on the weight-corrected intensity and duration of
95 corticosteroid therapy received prior to the onset of PcP.

96

97 **Materials and Method**

98 **Study Design**

99 This retrospective, multicenter observational study was conducted by the Okayama
100 Respiratory Disease Study Group. All subjects in this retrospective study were
101 Japanese. Adult patients (age 18 years and older) diagnosed with non-HIV-PcP between
102 August 1, 2010, and August 31, 2022, were included in the retrospective review of

103 medical records at seven Japanese sites. The primary endpoint of this study was 90-day
104 all-cause mortality, based on previous studies [21, 26, 31, 32].
105 The study was approved by the Institutional Ethics Committee of National Hospital
106 Organization Himeji Medical Center (No. 2020-28) and all other participating hospitals.
107 The data were analyzed anonymously. Informed consent was obtained on an opt-out
108 basis, and a description of the study was displayed on the websites of Himeji Medical
109 Center and each center. The requirement for written informed consent was waived
110 because of the retrospective nature of the study. The study was conducted in accordance
111 with the Declaration of Helsinki and all relevant Japanese laws and regulations.

112

113 **Case definition**

114 Eligible patients were defined according to their adherence to all of the following
115 selection criteria: (1) symptoms consistent with PcP (i.e., dyspnea, fever, and/or cough);
116 (2) evidence of new onset or progressive bilateral pneumonia on chest X-ray or
117 computed tomography; (3) positive Grocott staining or *P. jirovecii* DNA-specific
118 qualitative PCR (*P. jirovecii* DNA 6B614-0000-061-851, SRL, Inc., Shinjuku, Japan
119 [33]) for *P. jirovecii* cysts in respiratory specimens excluding the cases in which colony
120 formation of *P. jirovecii* was suspected during the clinical course; (4) Exclusion of
121 patients who were determined to be colonized with *P. jirovecii*. We considered patients
122 colonized with *P. jirovecii* if they had only positive *P. jirovecii* PCR and no pulmonary
123 symptoms, or if they had other types of infectious or autoimmune pneumonia diagnosed
124 by sputum culture, nucleic acid test, and/or antibody measurement; (5) Exclusion of
125 HIV-positive patients, and patients with insufficient data (weight, drug use data for

126 underlying disease, etc.). The 90-day all-cause mortality was calculated from the first
127 day of medical care for PcP.

128

129 **Clinical data**

130 Data extracted from electronic medical records included patient demographic
131 characteristics, underlying disease, previous immunosuppressive regimens for the
132 underlying disease (including corticosteroids, immunosuppressive drugs, anticancer
133 drugs, and biologics), clinical findings such as respiratory failure with a resting
134 peripheral oxygen saturation (SpO_2) < 90 % on admission, laboratory findings on
135 admission, anti-pneumocystis treatment regimen, and course of treatment. In addition,
136 details of all corticosteroids use during hospitalization were collected, including drug
137 name, daily dose, and duration of administration. Steroid doses were expressed in
138 prednisolone (PSL) equivalents as follows [34]: hydrocortisone, 0.25 mg PSL per mg;
139 methylprednisolone, 1.25 mg PSL per mg; betamethasone and dexamethasone, 7.5 mg
140 PSL per mg. For TMP-SMX, doses were calculated using the trimethoprim equivalent.
141 For immunosuppressants, drugs administered during 90 days prior to the first PcP visit,
142 and for administration of biologics and anticancer drugs, use or no use over the 90-day
143 period was recorded. For PcP treatment, the average daily dose of PSL per unit body
144 weight was calculated from the day of the first visit to day 5. For TMP-SMX, the
145 trimethoprim equivalent daily dose per unit body weight was tabulated, and the use or
146 lack use of atovaquone and pentamidine during the period was tabulated.

147

148 **Statistical Analysis**

149 Continuous variables were summarized by median interquartile range (IQR).
150 Descriptive analysis was used to examine patient characteristics. A receiver operating
151 characteristic (ROC) curve was constructed with 90 days PcP mortality as a conditional
152 variable and the mean daily steroid dose per unit body weight in the past 10 days to 90
153 days in increments of 10 days prior to the date of the first visit for PcP. The time with
154 the highest area under the ROC curve (AUC) was adopted as the period which most
155 affected mortality, and the mean steroid consumption during this period was analyzed.
156 Next, to estimate the risk of PcP mortality, we examined the average steroid dose during
157 the period of maximum AUC, as well as the use of other drugs within 30 days prior to
158 the first visit for PcP after initial diagnosis. For the PcP treatment period, the mean daily
159 dose of corticosteroid per unit body weight and TMP-SMX were calculated, divided
160 into 5 day segments; for the other drugs, only use or lack of use during the period in
161 question was considered. The outcome of interest was 90-day all-cause mortality, and
162 the χ -square test was used for testing categorical variables and the Mann-Whitney U test
163 for continuous variables to determine significant risk factors related to PcP mortality.
164 To account for the possibility of selection bias in this observational study (since the
165 intensity of corticosteroid treatment for the underlying disease was at the discretion of
166 the attending physician), we used an analysis method including stabilized treatment-
167 weighted inverse probability of treatment weighting (IPTW) based on propensity scores.
168 The propensity score was defined as baseline covariates (age [21, 35-38], sex,
169 underlying disease) previously described as heightening the risk of death (hematologic
170 disease [21, 22, 31], solid organ malignancy [39, 40], and interstitial lung disease [ILD]
171 [38, 41]). Using an IPTW method with truncated stabilization weights, we reconstructed
172 a pseudo-population in which patients in both groups (90-day deceased vs. 90-day

173 survival) had similar characteristics balanced for age, sex, and underlying disease
174 covariates, so that outcomes could be meaningfully compared.
175 Adjusted data were then used to evaluate the risk of death among the 90-day survival or
176 mortality groups using logistic regression. Explanatory variables were included in the
177 propensity score model, including steroid burden for the underlying disease during the
178 period of maximum AUC, days from onset to start of treatment [36, 40, 42], worsening
179 respiratory status [30, 40, 43, 44], lactate dehydrogenase (LDH) [29, 40], lymphocyte
180 count [35, 42, 45], and early treatment with steroids, and TMP-SMX, which had
181 previously been implicated in increasing the risk of death. Missing values were not
182 complemented. EZR [46] was used for statistical analysis, and $P < 0.05$ was considered
183 significant.

184

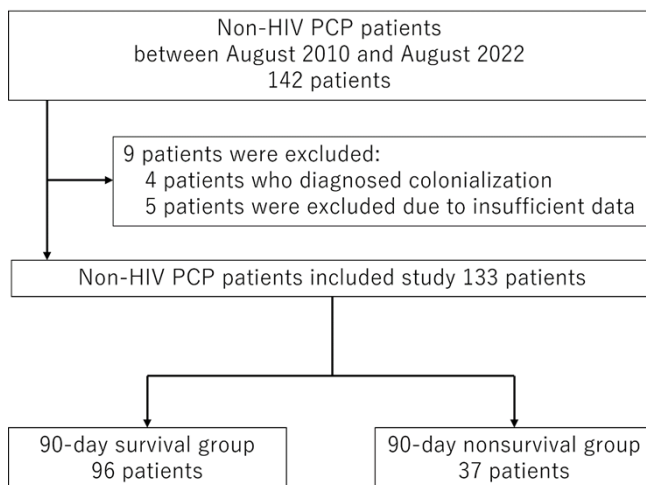
185 **Result**

186 **Patient Characteristics**

187 During the 11-year study period, 142 patients were diagnosed with PcP at seven centers,
188 and 133 patients met the criteria and were selected for the study (Figure 1). The median
189 (IQR) age of all patients was 71.5 (64.4-78.5) years, and 49 (36.8%) were female. Total
190 mortality at 90 days after the first visit was 37 (27.8%) patients (Table 1). With the
191 exception of 3 patients, the majority (130 patients) had received immunosuppressive
192 drugs or had immunosuppressive disease at the time of diagnosis of PcP. The most
193 common underlying disease type was autoimmune (N=61), followed by solid organ
194 malignancy (N=43) and blood disease (N=24). Underlying pulmonary disease was also
195 present in 94 patients, with ILD (N=60) and emphysema (N=49) accounting for the

196 majority of cases. There were 126 patients (94.7%) with a history of
197 immunosuppressive or anticancer drug use in the 90 days prior to the first visit, the most
198 common of which was corticosteroid in 101 patients (75.9%), with a median (IQR) dose
199 of 0.24 (0.10-0.43) mg/kg/day. The next most common group was immunosuppressant
200 users (N=58), followed by anticancer drug users (N=44). Six patients received PcP
201 prophylaxis in the month of the first visit; one with pentamidine and the remaining five
202 with TMX-SMP, but all at reduced doses than specified in the guidelines [47]. The
203 median (IQR) time from onset of PcP symptoms to the first visit was 4 (0-7) days; 75
204 patients (56.4%) had respiratory failure with SpO₂ < 90 % (room air) at the first visit.
205 Treatment consisted of antimicrobials in 130 patients (TMX-SMP in 124, atovaquone in
206 23, pentamidine in 18, with concomitant use), and 2 of 3 patients who did not use
207 antibiotics throughout the whole course died. 24 patients did not use antibiotics on days
208 1-5. Corticosteroids were started or increased in 95 patients over the whole course up to
209 90 days after the initial visit. The median (IQR) number of days from initial visit to
210 antimicrobial initiation was 1(0-3) day and the median (IQR) number of days to steroid
211 initiation or dose escalation was 1(0-3) day.

212 **Fig 1. Patient selection flowchart**



213

214 **Table 1.** Baseline Patient and Demographic Characteristics

	All patients (N = 133)	N/A	Non-survivors (N = 37)	Survivors (N = 96)	P value ^a	OR(CI)
age	71.5 (64.4-78.5)	0	71.4 (67.2-79.4)	71.6 (61.6-77.7)	0.255	
male sex	84	0	25	59	0.650	1.30 (0.55-3.21)
smoking Pack Years	16.8 (0-42)	8	26.2 (0-48)	15 (0-40)	0.444	
body weight (kg)	54.0 (47.0-60.0)	0	54.7 (48.8-58.8)	53.5 (46.6-60.1)	0.798	
height (cm)	159.9 (151.6-165.0)	6	159.5 (151.6-164.8)	160.0 (151.8-165.0)	0.857	
basal disease						
autoimmune disease	61	0	11	50	0.034	0.39 (0.16-0.93)
solid organ tumor	43	0	15	28	0.294	1.65 (0.68-3.90)
hematologic disease	24	0	7	17	0.679	1.38 (0.46-3.86)
solid organ transplantation	4	0	0	4	0.506	0.00 (0.00-3.94)
interstitial lung disease	60	0	23	37	0.024	2.60 (1.12-6.21)
asthma	2	0	0	2	0.929	0.00 (0.00-13.9)
basal lung CT findings						
bronchiectasis	17	1	6	11	0.560	1.54 (0.43-5.03)
emphysema	49	1	20	29	0.013	2.86 (1.22-6.86)
honeycomb lung	14	1	4	10	1.000	1.07 (0.23-4.31)
traction bronchiectasis	44	1	17	27	0.062	2.27 (0.96-5.41)
chronic immunosuppressive regimen						
basal corticosteroid dose						
1-30 day ^b	0.126 (0.035-0.377)	0	0.412 (0.253-0.618)	0.096 (0.000-0.193)	<0.001	
1-60 day ^b	0.123 (0.050-0.380)	0	0.421 (0.281-0.629)	0.097 (0.095-0.218)	<0.001	
1-40 day ^b	0.119 (0.039-0.393)	0	0.425 (0.336-0.695)	0.093 (0.000-0.183)	<0.001	
basal immunosuppressive regimen						
immunosuppressant	58	0	10	48	0.028	0.37 (0.14-0.90)
MTX	39	0	3	36	0.002	0.15 (0.03-0.53)
CNI	19	0	6	13	0.906	1.23 (0.35-3.87)
other immunosuppressant	9	0	4	5	0.443	2.19 (0.41-10.9)
biologic agent	7	0	0	7	0.210	0.00 (0.00-1.77)
anticancer drug	44	0	14	30	0.604	1.34 (0.55-3.16)
PcP prophylaxis	6	0	4	2	0.088	5.61 (0.76-64.8)
onset to first touch (days)	4 (0-7)	0	2 (1-5)	5 (0-9)	0.062	
hypoxia	75	0	29	46	0.003	3.90 (1.54-10.9)
laboratory data						
(1→3) β-D-glucan ^c (pg/mL)	31.3 (10.9-98.8)	1	41.0 (15.7-141.8)	27.6 (10.5-67.3)	0.258	
serum albumin (g/dL)	2.9 (2.4-3.3)	38	2.6 (2.3-3.2)	3.0 (2.6-3.5)	0.027	
CRP (mg/dL)	6.97 (4.03-11.46)	0	6.59 (4.51-13.4)	6.99 (3.73-10.8)	0.825	
KL-6 (U/mL)	603 (370-970)	17	827 (556-1645)	534 (362-793)	0.001	
LDH (IU/L)	330 (273-450)	0	363 (310-538)	326 (268-420)	0.015	
lymphocyte count (mm ³)	650 (377-1,070)	0	460 (317-680)	720 (411-1185)	0.004	
SP-D (ng/mL)	147 (93-239)	57	236 (146-312)	137 (78-223)	0.027	
white blood cell count (mm ³)	8700 (6200-11000)	0	7960 (5600-9400)	8750 (6625-11723)	0.060	
PcP therapy time days						
onset to anti PcP drug initiation	6 (2-12)	3	3 (2-8)	7 (4-14)	0.005	
onset to steroid dose-up or initiation	6 (2-11)	38	2 (2-7)	7 (3-11)	0.012	
first visit to anti-PcP drug initiation	1 (0-3)	3	1 (0-2)	1 (0-4)	0.184	
first visit to steroid dose-up or initiation	1 (0-3)	38	1 (0-2)	1 (0-3)	0.604	
PcP therapy						
corticosteroid dose for 1-5day**	0.804 (0.122-8.001)	0	2.441 (0.535-11.67)	0.603 (0.078-6.653)	0.015	
TMP-SMX use for day 1-5	100	0	26	74	0.554	0.70 (0.28-1.84)
TMP-SMX dose for 1-5day**	5.858 (0.292-10.505)	0	4.683 (0.000-10.105)	5.998 (0.854-10.936)	0.549	
atovaquone use for day 1-5	6	0	2	4	1.000	1.31 (0.11-9.62)
pentamidine use for day 1-5	8	0	7	1	<0.001	21.6 (2.61-103)
first visit to last follow days	124 (24-954)	0	17 (8-32)	422 (96-1357)		

215 CI: confidence interval; NA: not available; OR: odds ratio.

216 Continuous variables were expressed as median (IQR), and nominal variables were expressed as number of cases.

217 ^a Mann-Whitney U or χ -square test

218 ^b mg/kg/day

219 ^c (122 patients underwent test WAKO (FUJIFILM Wako Pure Chemical Corp.) or 11 patients underwent Fungitec G Test

220 MK II (NISSUI BG))

221

222

223

224 **ROC curves for corticosteroid dosage**

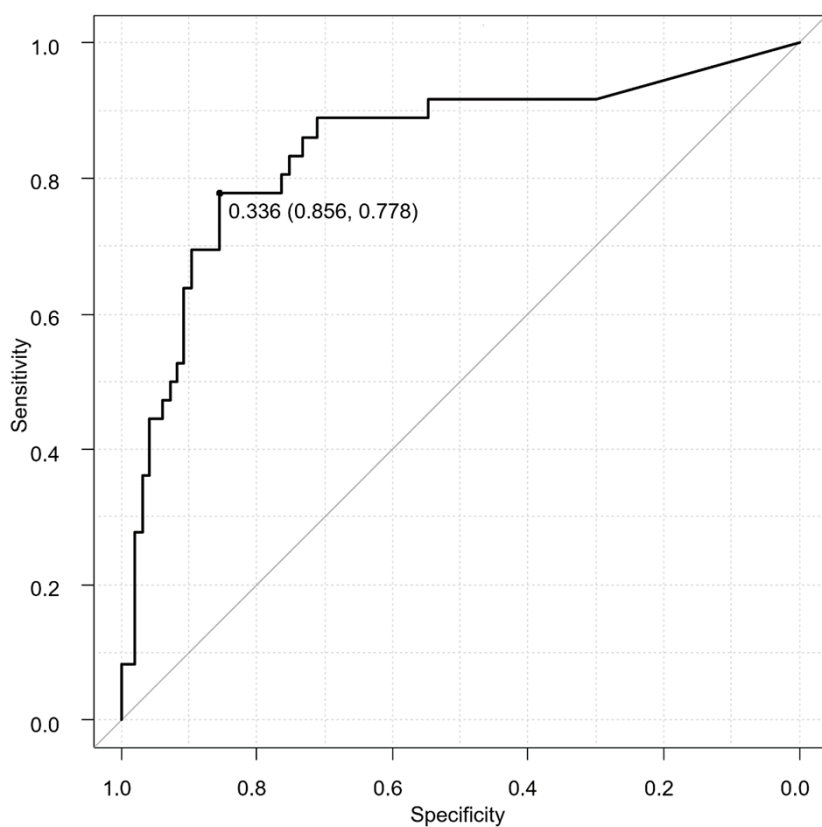
225 The AUCs of each ROC curve constructed with the mean daily corticosteroid use per
226 unit body weight and 90-day mortality in the past 10 days to 90 days in increments of
227 10 days are shown in Table 2. The AUC was the highest for the past 1-40 days for 90-
228 day mortality (0.8305, 95% confidence interval [CI] 0.7404-0.9206), and the distance-
229 to-the-corner method indicated a cutoff value of mean corticosteroid dose of 0.34
230 mg/kg/day (Figure 2). Indeed, the mortality by dose category of cumulative steroid dose
231 in the past 1-40 days, mortality was significantly higher above 0.3 mg/kg/day (Table 3,
232 Figure 3).

233 **Table 2. AUC of ROC curve of increments of 10 days median corticosteroid dose**
234 **for underlying disease in predicting 90-day all-cause mortality in patients with**
235 **Pneumocystis pneumonia by period before the first visit.**

	AUC
1-10 day	0.800
1-20 day	0.793
1-30 day	0.815
1-40 day	0.824
1-50 day	0.818
1-60 day	0.795
1-70 day	0.778
1-80 day	0.773
1-90 day	0.769

236

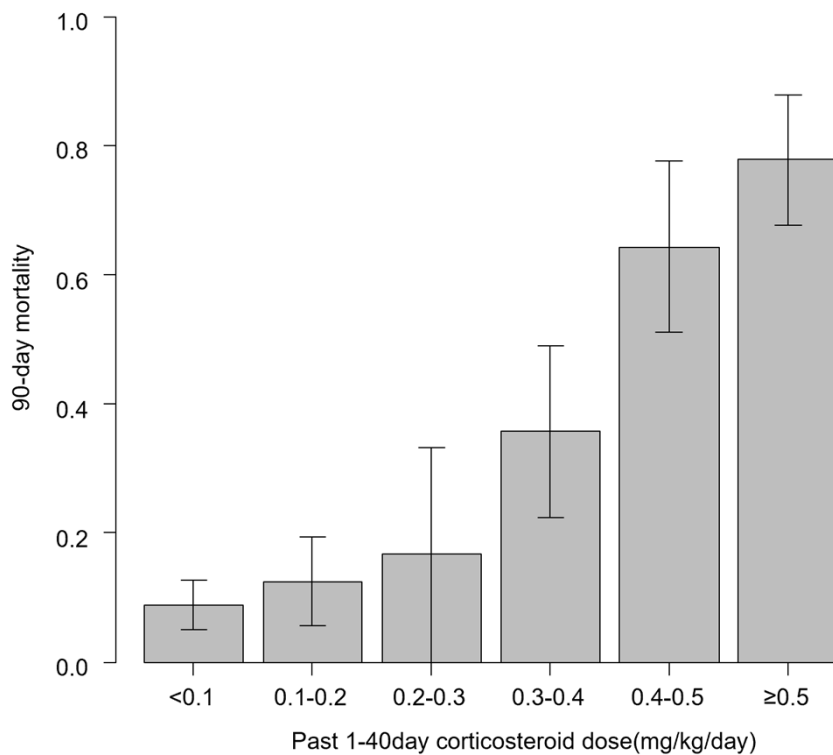
237 **Fig 2. ROC/AUC analysis.** ROC curve analysis showing the performance of past 40
238 days corticosteroid dose before PcP first visit in predicting all-cause 90-day mortality of
239 non-HIV-PcP patients.



240

241 **Fig 3. 90-day mortality by category of mean steroid load 1-40 days before first**

242 **visit.**



243

244 **Table 3. 90-day mortality by dose category of cumulative steroid dose**

1-40day corticosteroid dose	N	OR (95%CI)	P value
<0.1 ^a	57	Reference	Reference
0.1-0.2 ^a	24	1.49 (0.33-6.78)	0.609
0.2-0.3 ^a	6	2.08 (0.20-21.5)	0.539
0.3-0.4 ^a	14	5.78 (1.39-24.1)	0.016
0.4-0.5 ^a	14	18.7 (4.49-78)	<0.001
≥0.5 ^a	18	36.4 (8.61-54)	<0.001

245

^a mg/kg/day

246

CI: confidence interval; OR: odds ratio

247

248 **Comparison of survivors vs. non-survivors**

249 A comparison of survivors (N=96) and non-survivors (N=37) is shown in Table 1.

250 There were no significant differences in age and gender between the two groups. In

251 terms of underlying disease, solid organ malignancies were significantly more common

252 in the deceased patients, while autoimmune diseases were less common. Of the
253 underlying pulmonary diseases, ILD and emphysema were significantly more common
254 in the deceased patients with CT findings. Regarding medications for underlying
255 disease, baseline corticosteroid daily doses per unit body weight for 30 and 60 days
256 before the PcP first visit were significantly higher in the deceased patient group than in
257 the survivors. Among immunosuppressive drugs, methotrexate (MTX) was used for
258 significantly fewer patients in the deceased group, but no difference was seen for
259 anticancer drugs. Respiratory failure was associated with a worse prognosis. Laboratory
260 values of LDH, Krebs von den Lungen-6 (KL-6), and pulmonary surfactant protein-D
261 (SP-D) were significantly higher in the deceased patients, and serum albumin (Alb) and
262 lymphocyte counts were significantly lower. The time from disease onset to the first
263 medical examination was significantly shorter for the patients who died, and the days
264 from disease onset to the start of treatment were also significantly fewer, and more
265 deceased patients had progressed rapidly. In terms of treatment, the initial steroid dose
266 of day 1-5 was significantly higher in the deceased group, but there was no significant
267 difference in the fixed dose of TMX-SMP between survivors and non-survivors.
268 Characteristics before and after the weighting process are shown in Table 4. In a
269 multivariate analysis adjusted for propensity score reciprocal weighting, initial
270 therapeutic steroid dose and the fixed-dose combination were not significant markers,
271 but mean steroid dose prior to PcP first day (per 0.1 mg/kg/day increment, odds ratio
272 1.36 [95% CI = 1.16-1.66], $P < 0.001$), cumulative steroid dose, LDH, and lymphocyte
273 count were significant predictors of mortality (Table 5).

274 **Table 4. Propensity score-based stabilized treatment-weighted inverse probability**
 275 **inverse probability (IPTW) to adjust for the covariates age, sex and underlying**
 276 **disease.**

mortality	Unweighted			IPTW-weighted			
	Factor	Nonsurvivors	Survivors	SMD	Nonsurvivors	Survivors	SMD
		37	96		34.9	96.8	
Age (range)	71.4 (46.8-90.0)	71.6 (18.2-90.2)	0.343	70.9 (46.8-90.0)	72.2 (18.2-90.2)	0.110	
Sex M (%)	25 (67.6)	59 (61.5)	0.128	22.5 (64.5)	61.8 (63.8)	0.014	
F (%)	12 (30.6)	37 (38.5)		12.4 (35.5)	35.0 (36.2)		
Based disease							
blood disease (%)	8 (21.6)	16 (16.7)	0.126	7.9 (22.7)	18.7 (19.3)	0.085	
ILD (%)	23 (62.2)	37 (38.5)	0.486	17.0 (48.8)	44.3 (45.8)	0.061	
Solid organ tumor (%)	15 (40.5)	28 (29.2)	0.240	11.8 (33.9)	31.6 (32.6)	0.028	

277 ILD: interstitial lung disease; SMD: standardized mean difference

278 **Table 5. Multivariate logistic regression analysis**

	Unadjusted		Propensity weighted	
	OR (95% CI)	P value	OR (95% CI)	P value
Corticosteroid for based disease 1-40day ^a	1.36 (1.15-1.60)	<0.001	1.39 (1.16-1.66)	<0.001
Onset to First visit	0.96 (0.89-1.05)	0.405	0.97 (0.90-1.06)	0.539
Lactate dehydrogenase ^b	1.44 (1.06-1.97)	0.021	1.37 (0.90-1.88)	0.049
Lymphocyte count ^c	0.89 (0.80-0.98)	0.024	0.88 (0.78-0.98)	0.023
Hypoxia	2.07 (0.64-6.73)	0.228	1.76 (0.54-5.67)	0.347
Corticosteroid for PcP therapy 1-5day ^d	1.03 (0.96-1.11)	0.429	1.03 (0.95-1.12)	0.442
TMP-SMX for PcP therapy 1-5day ^d	0.93 (0.84-1.02)	0.108	0.93 (0.85-1.02)	0.143

279 CI: confidence interval; OR: odds ration;

280 ^a per 0.1 mg/kg/day increment

281 ^b per 100 U/L increment

282 ^c per 100/mm³ increment

283 ^d per 1mg/kg/day increment

284

285 Discussion

286 In this retrospective study, we found that a corticosteroid dose before PcP onset had

287 significant negative impact on 90-day all-cause mortality. Long-term corticosteroid

288 loading for underlying disease increased the mortality of PcP in a dose-dependent
289 manner. Furthermore, in multivariate analysis, long-term steroid loading before PcP
290 onset significantly affected 90-day mortality, while respiratory failure, early steroid and
291 TMP-SMX for PcP treatment did not. Pre-onset long-term steroid loading had the
292 greatest impact. Although there is some doubt about the validity of calculating
293 statistically daily, the AUC was maximized (0.8314) for the past 7-39 days. This
294 suggests that corticosteroid loading in the more distant past than just before the onset of
295 PcP has a greater impact on the mortality rate of PcP. Prior studies had shown that
296 corticosteroids for underlying disease have an impact on the mortality of PcP [27-30].
297 Here, we report that baseline steroid loading was more strongly associated with the
298 mortality of PcP than hypoxemia at the initiation of treatment or the corticosteroid and
299 antibiotic treatment given for PcP. This suggests that proper risk assessment and
300 appropriate prophylaxis in high-risk patients is more important for PcP than early
301 detection and treatment. However, in the present study, patients who developed PcP
302 despite prophylaxis was not good prognosis, so further investigation is needed on the
303 intensity and duration of such prophylaxis.

304 In this study, we found that the prognostic impact of antimicrobials and steroids on
305 treatment of non-HIV-PcP was less than that of corticosteroids for underlying disease.
306 Three patients did not receive any antimicrobial therapy, but two of them died (the
307 remaining patient resolved spontaneously; this was a patient with no underlying
308 immunosuppressive disease). It is not unusual for eligible patients to have occult
309 infection [48], but there are several reports of cases where eligible persons developed
310 PcP [48-51], which generally has a poor prognosis. However, there are also reports of
311 patients recovering without complications [50]. On the other hand, we report four cases

312 of death without a history of steroid use. All cases had underlying hematologic disease
313 (malignant lymphoma, aplastic anemia, myelofibrosis, and myelodysplastic syndrome).
314 A longer the period from onset to treatment initiation was proportionally associated
315 with a better prognosis. This may because many of the patients who started treatment
316 early had rapid deterioration and respiratory failure, resulting in a poor prognosis. This
317 suggests that immunity before disease onset has a greater impact on prognosis,
318 suggesting that prevention is of paramount importance.

319 No treatment guidelines have been released for non-HIV-PcP, but this may be due to the
320 diversity of patients' immune status. It is known that alveolar macrophages and CD4-
321 positive T cells, play a major role in immunity against PcP [52]. Corticosteroids
322 interfere with many pathways within the immune system and reduce the number and
323 function of peripheral blood CD4-positive lymphocytes, clearly associated with a
324 significant risk of PcP in non-HIV patients [53]. Corticosteroids have further been
325 shown to impair alveolar macrophage function [54]. In a dexamethasone-induced
326 immunosuppression model in rats, macrophages were found to be deficient in nitric
327 oxide and hydrogen peroxide production even in Pc infection [55, 56], suggesting that
328 the bactericidal capacity of Pneumocystis is problematic. These results may explain the
329 poor prognosis of PcP associated with long-term steroid accumulation.

330 The current study has several limitations. Because of its retrospective nature, the
331 diagnosis and treatment of PcP was not standardized; diagnosis was made using either
332 only staining, PCR results or classical clinical criteria. Because PCR for PcP is not
333 covered by healthcare insurance in Japan, many cases of suspected PcP were diagnosed
334 by imaging and clinical findings of PcP based on cutoffs for (1→3) β-D-glucan
335 elevation [57, 58], and many cases were likely missed. We also had to exclude cases

336 where estimated steroid use in the past 90 days could not be assessed and cases with no
337 history of weight measurement, which may have affected our results due to selection
338 bias. Also, only a rough assessment of respiratory impairment was possible.
339 Additionally, too low a number of cases resulted in a situation where logistic regression
340 analysis resulted in an overabundance of explanatory variables and insufficient test
341 power. In the present study, it was impossible to determine whether continuous or
342 intermittent dosing was riskier because it was not possible to distinguish whether daily
343 dosing was pulsatile or continuous. Finally, Alb test data, which had been reported to
344 contribute to PcP prognosis in previous studies, could not be evaluated due to the large
345 number of missing values. Prospective studies and a larger number of cases must be
346 considered in the future.

347

348 **Conclusions**

349 In this propensity-matched cohort study, we found that corticosteroid administration in
350 the 40-day period before the onset of PcP increased the mortality in a dose-dependent
351 manner (per 0.1mg/kg/day increment, odds ratio 1.36 [95% CI = 1.16-1.66], $P < 0.001$).
352 Thus, long-term corticosteroid loading for treating the underlying disease strongly
353 affects the prognosis of PcP, emphasizing the importance of appropriate prophylaxis
354 especially in this population.

355

356 **Acknowledgments**

357 We thank to Okayama Respiratory Disease Study Group for providing the case data.

358

359 Reference

- 360 1. Thomas CF, Limper AH. Pneumocystis pneumonia. N Engl J Med. 2004;350: 2487–
361 2498.
- 362 2. Sepkowitz KA, Brown AE, Telzak EE, Gottlieb S, Armstrong D. Pneumocystis
363 carinii pneumonia among patients without AIDS at a cancer hospital.
364 JAMA. 1992;267: 832-837.
- 365 3. Yale SH, Limper AH. Pneumocystis carinii pneumonia in patients without acquired
366 immunodeficiency syndrome: associated illness and prior corticosteroid therapy.
367 Mayo Clin Proc. 1996;71: 5-13.
- 368 4. Arend SM, Kroon FP, van't Wout JW. Pneumocystis carinii pneumonia in patients
369 without AIDS, 1980 through 1993. An analysis of 78 cases. Arch Intern
370 Med. 1995;155: 2436-2441.
- 371 5. Bienvenu AL, Traore K, Plekhanova I, Bouchrik M, Bossard C, Picot S.
372 Pneumocystis pneumonia suspected cases in 604 non-HIV and HIV patients. Int J
373 Infect Dis. 2016;46: 11-17.
- 374 6. Mansharamani NG, Garland R, Delaney D, Koziel H. Management and outcome
375 patterns for adult Pneumocystis carinii pneumonia, 1985 to 1995: comparison of
376 HIV-associated cases to other immunocompromised states. Chest. 2000;118: 704-
377 711.
- 378 7. Roux A, Canet E, Valade S, Robert FG, Hamane S, Lafabrie A, et al. Pneumocystis
379 jirovecii pneumonia in patients with or without AIDS, France. Emerg Infect
380 Dis. 2014;20: 1490-1497.

- 381 8. Roblot F, Moal GL, Kufmann-Lacroix C, Bastides F, Boutlille D, Verdon R, et
382 al. Pneumocystis jirovecii pneumonia in HIV-negative patients: a prospective study
383 with focus on immunosuppressive drugs and markers of immune impairment. *Scand*
384 *J Infect Dis.* 2014;46: 210-214.
- 385 9. Aoki Y, Iwamoto M, Kamata Y, Nagashima T, Yoshio T, Okazaki H, et al.
386 Prognostic indicators related to death in patients with Pneumocystis pneumonia
387 associated with collagen vascular diseases. *Rheumatol Int.* 2009;29: 1327-1330.
- 388 10. Classen AY, Henze L, Lilienfeld-Toal M, Maschmeyer G, Sandherr M, Graeff LD,
389 et al. Primary prophylaxis of bacterial infections and Pneumocystis jirovecii
390 pneumonia in patients with hematologic malignancies and solid tumors: 2020
391 updated guidelines of the Infectious Diseases Working Party of the German Society
392 of Hematology and Medical Oncology (AGIHO/DGHO). *Ann Hematol.* 2021;100:
393 1603-1620.
- 394 11. Taplitz RA, Kennedy EB, Flowers CR. Antimicrobial Prophylaxis for Adult
395 Patients With Cancer-Related Immunosuppression: ASCO and IDSA Clinical
396 Practice Guideline Update Summary *J Oncol Pract.* 2018;14: 692-695.
- 397 12. Ioannidis JP, Cappelleri J, Skolnik PR, Lau J, Sacks HS. A meta-analysis of the
398 relative efficacy and toxicity of Pneumocystis carinii prophylactic regimens. *Arch*
399 *Intern Med.* 1996;156: 177-188.
- 400 13. Neofytos N, Hirzel C, Boely E, Lecompte T, Khanna N, Mueller N, et al.
401 Pneumocystis jirovecii pneumonia in solid organ transplant recipients: a descriptive
402 analysis for the Swiss Transplant Cohort. *Transpl Infect Dis.* 2018;20: e12984.
- 403 14. Park JW, Curtis JR, Kim MJ, Lee H, Song YW, Lee EB. Pneumocystis pneumonia
404 in patients with rheumatic diseases receiving prolonged, non-high-dose steroids-

- 405 clinical implication of primary prophylaxis using trimethoprim-sulfamethoxazole.
406 *Arthritis Res Ther.* 2019;21: 207.
- 407 15. Miyake K, Kawamura T, Nakahara Y, Sasaki S. A single-center, person-month-
408 based analysis of the risk of developing *Pneumocystis pneumonia* (PCP) in
409 immunosuppressed non-HIV patients: Preventive effects of trimethoprim-
410 sulfamethoxazole. *J Infect Chemother.* 2023;S1341-321X(23)00174-5. doi:
411 10.1016/j.jiac.2023.07.012.
- 412 16. Stern A, Green H, Paul M, Vidal L, Leibovici L. Prophylaxis for *Pneumocystis*
413 *pneumonia* (PCP) in non-HIV immunocompromised patients. *Cochrane Database*
414 *Syst Rev.* 2014;10: CD005590.
- 415 17. Briel M, Bucher HC, Boscacci R, Furrer H. Adjunctive corticosteroids for
416 *Pneumocystis jiroveci pneumonia* in patients with HIV-infection. *Cochrane Database*
417 *Syst Rev.* 2006;3: CD006150.
- 418 18. Ewald H, Raatx H, Boscacci R, Furrer H, Bucher HC, Briel M. Adjunctive
419 corticosteroids for *Pneumocystis jiroveci pneumonia* in patients with HIV infection.
420 *Cochrane Database Syst Rev.* 2015;4: CD006150.
- 421 19. Pareja JG, Garland r, Koziel H. Use of adjunctive corticosteroids in severe adult
422 non-HIV *Pneumocystis carinii pneumonia*. *Chest.* 1998;113: 1215-1224.
- 423 20. Delclaux C, Zahar JR, Amraoui G, Leleu G, Lebargy F, Brochard L, et al.
424 Corticosteroids as adjunctive therapy for severe *Pneumocystis carinii pneumonia* in
425 non-human immunodeficiency virus-infected patients: retrospective study of 31
426 patients. *Clin Infect Dis.* 1999;29: 670-672.

- 427 21. Moon SM, Kim T, Sung H, Kim MN, Kim SH, Choi SH, et al. Outcomes of
428 moderate-to-severe Pneumocystis pneumonia treated with adjunctive steroid in non-
429 HIV-infected patients. *Antimicrob Agents Chemother.* 2011;55: 4613-4618.
- 430 22. Lemiale V, Debrumets A, Delonnoy A, Alberti C, Azoulay E. Adjunctive steroid in
431 HIV-negative patients with severe Pneumocystis pneumonia. *Respir Res.* 2013;14:
432 87.
- 433 23. Injean P, Eells SJ, Wu H, McElroy I, Gregson AL, McKinnel JA. A Systematic
434 Review and Meta-Analysis of the Data Behind Current Recommendations for
435 Corticosteroids in Non-HIV-Related PCP: Knowing When You Are on Shaky
436 Foundations. *Transplant Direct.* 2017;3: e137.
- 437 24. Wieruszewski PM, Barreto JN, Frazee E, Daniels CE, Tosh PK, Dierkhising RA, et
438 al. Early Corticosteroids for Pneumocystis Pneumonia in Adults Without HIV Are
439 Not Associated With Better Outcome. *Chest.* 2018;154: 636-644.
- 440 25. Assal M, Lambert J, Chow-Chine L, Bisbal M, Servan L, Gonzalez F, et al.
441 Prognostic impact of early adjunctive corticosteroid therapy in non-HIV oncology or
442 haematology patients with Pneumocystis jirovecii pneumonia: A propensity score
443 analysis. *PLoS One.* 2021;16: e0250611.
- 444 26. Huang YM, Lu CH, Cheng CF, Shen CY, Hsieh SC, Li KJ, et al. Clinical features
445 and prognostic predictors in patients with rheumatic diseases complicated by
446 Pneumocystis pneumonia. *Int J Infect Dis.* 2022;122: 1018-1025.
- 447 27. Ando T, Abe Y, Endo Y Tada K, Yamaji K, Tamura N. Rapid glucocorticoid
448 tapering therapy to reduce mortality from pneumocystis pneumonia in patients with
449 rheumatic disease. *Mod Rheumatol.* 2019;29: 656-666.

- 450 28. Pagano L, Fianchi L, Mele L, Girmenia C, Offidani M, Ricci P, et al. Pneumocystis
451 carinii pneumonia in patients with malignant haematological diseases: 10 years'
452 experience of infection in GIMEMA centres. *Br J Haematol.* 2002;117: 379-386.
- 453 29. Roblot F, Moal GL, Godet C, Hutin P, Texereau M, Boyer E, et al. Pneumocystis
454 carinii pneumonia in patients with hematologic malignancies: a descriptive study. *J*
455 *Infect.* 2003;47: 19-27.
- 456 30. Chen M, Tian X, Qin F, Zhou J, Liu J, Wang M, et al. Pneumocystis Pneumonia in
457 Patients with Autoimmune Diseases: A Retrospective Study Focused on Clinical
458 Characteristics and Prognostic Factors Related to Death. *PLoS One.* 2015 Sep 30;10:
459 e0139144.
- 460 31. Kim T, Moon SM, Sung H, Kim MN, Kim SH, Choi SH, et al. Outcomes of non-
461 HIV-infected patients with Pneumocystis pneumonia and concomitant pulmonary
462 cytomegalovirus infection. *Scand J Infect Dis.* 2012;44: 670-677.
- 463 32. Gaborit BJ, Tessoulin B, Lavergne RA, Morio F, Sagan C, Canet E, et al. Outcome
464 and prognostic factors of Pneumocystis jirovecii pneumonia in immunocompromised
465 adults: a prospective observational study. *Ann Intensive Care.* 2019;9: 131.
- 466 33. Wakefield AE, Pixley FJ, Banerji S, Sinclair K, Miller RF, Moxon ER, et al.
467 Detection of Pneumocystis carinii with DNA amplification. *Lancet* 1990;336: 451-3.
- 468 34. Liu D, Ahmet A, Ward L, Krishnamoorthy P, Mandelcorn ED, Leigh R, et al. A
469 practical guide to the monitoring and management of the complications of systemic
470 corticosteroid therapy. *Allergy Asthma Clin Immunol.* 2013;9: 30.
- 471 35. Kageyama T, Furuta S, Ikeda K, Kagami S, Kashiwakura D, Sugiyama T, et al.
472 Prognostic factors of Pneumocystis pneumonia in patients with systemic autoimmune
473 diseases. *PLoS One.* 2019;14: e0214324.

- 474 36. Ko RE, Na SJ, Huh K, Suh GY, Jeon K. Association of time-to-treatment with
475 outcomes of Pneumocystis pneumonia with respiratory failure in HIV-negative
476 patients. *Respir Res.* 2019;20: 213.
- 477 37. Verhaert M, Blockmans D, Langhe ED, Henckaerts L. Pneumocystis jirovecii
478 pneumonia in patients treated for systemic autoimmune disorders: a retrospective
479 analysis of patient characteristics and outcome. *Scand J Rheumatol.* 2020;49: 345-
480 352.
- 481 38. Ishikawa Y, Nakano K, Tokutsu K, Miyata H, Fujino Y, Matsuda S, et al.
482 Estimation of treatment and prognostic factors of pneumocystis pneumonia in
483 patients with connective tissue diseases. *RMD Open.* 2021 Mar;7: e001508.
- 484 39. Kofteridis DP, Valachis A, Velegraki M, Antoniou M, Christofaki M, Vrentzos GE,
485 et al. Predisposing factors, clinical characteristics and outcome of Pneumonocystis
486 jirovecii pneumonia in HIV-negative patients. *J Infect Chemother.* 2014;20: 412-416.
- 487 40. Liu Y, Su L, Jiang SJ, Qu H. Risk factors for mortality from pneumocystis carinii
488 pneumonia (PCP) in non-HIV patients: a meta-analysis. *Oncotarget.* 2017;8: 59729-
489 59739
- 490 41. Hamada S, Ichiyasu H, Inaba M, Takahashi H, Sadamatsu T, Akaike K, et al.
491 Prognostic impact of pre-existing interstitial lung disease in non-HIV patients with
492 Pneumocystis pneumonia. *ERJ Open Res.* 2020;6: 00306-2019.
- 493 42. Li MC, Lee NY, Lee HC, Lee HC, Chang CM, Ko WC. Pneumocystis jiroveci
494 pneumonia in immunocompromised patients: delayed diagnosis and poor outcomes
495 in non-HIV-infected individuals. *J Microbiol Immunol Infect.* 2014;47: 42-47.

- 496 43. Kim SJ, Lee J, Cho YJ, Park YS, Lee CH, Yoon HI, et al. Prognostic factors of
497 *Pneumocystis jirovecii* pneumonia in patients without HIV infection. *J*
498 *Infect.* 2014;69: 88-95
- 499 44. Choi JS, Lee SH, Leem AY, Song JH, Kim SY, Chung KS, et al. *Pneumocystis*
500 *jirovecii* pneumonia (PCP) PCR-negative conversion predicts prognosis of HIV-
501 negative patients with PCP and acute respiratory failure. *PLoS One.* 2018;13:
502 e0206231.
- 503 45. Cao Y, Chen J, Dong L. Supplementary Role of Immunological Indicators in the
504 Diagnosis and Prognosis of *Pneumocystis* Pneumonia in Non-HIV
505 Immunocompromised Patients. *Infect Drug Resist.* 2022;15: 4675-4683.
- 506 46. Kanda Y. Investigation of the freely available easy-to-use software 'EZR' for
507 medical statistics. *Bone Marrow Transplant.* 2013;48: 452-458.
- 508 47. cdc.gov [Internet]. Guidelines for Prevention and Treatment of Opportunistic
509 Infections in HIV-Infected Adults and Adolescents [cited 2015 Sep 7]; Available
510 from: <https://www.cdc.gov/mmwr/preview/mmwrhtml/rr5804a1.htm>
- 511 48. Jacobs JL, Libby DM, Winters RA, Gelmont DM, Fried ED, Hartman BJ, et al. A
512 cluster of *Pneumocystis carinii* pneumonia in adults without predisposing illnesses. *N*
513 *Engl J Med.* 1991;324: 246-250.
- 514 49. Cano S, Capote F, Calderon E, Castillo J. *Pneumocystis carinii* pneumonia in
515 patients without predisposing illnesses. Acute episode and follow-up of five cases.
516 *Chest.* 1993;104: 376-381.
- 517 50. Harris K, Maroun R, Chalhoub M, Elsayegh D. Unusual presentation of
518 *pneumocystis* pneumonia in an immunocompetent patient diagnosed by open lung
519 biopsy. *Heart Lung Circ.* 2012;21 :221-224.

- 520 51. Ide H, Yamaji Y, Tobino K, Okahisa M, Murakami K, Goto Y, et al. Pneumocystis
521 jirovecii Pneumonia in an Immunocompetent Japanese Man: A Case Report and
522 Literature Review. *Case Rep Pulmonol.* 2019;2019: 3981681.
- 523 52. Otieno-Odhiambo P, Wasseriman S, Hoving JC. The Contribution of Host Cells to
524 Pneumocystis Immunity: An Update. *Pathogens.* 2019;8: 52.
- 525 53. Iriart X, Bouar ML, Kamar N, Berry A. Pneumocystis Pneumonia in Solid-Organ
526 Transplant Recipients. *J Fungi (Basel).* 2015;1: 293-331.
- 527 54. Schaffner A, Schaffner T. Glucocorticoid-induced impairment of macrophage
528 antimicrobial activity: mechanisms and dependence on the state of activation. *Rev*
529 *Infect Dis.* 1987;S5: S620-9.
- 530 55. Lasbury ME, Liao CP, Hage CA, Durant PJ, Tschang D, Wang SH, et al. Defective
531 nitric oxide production by alveolar macrophages during Pneumocystis pneumonia.
532 *Am J Respir Cell Mol Biol.* 2011;44: 540-547.
- 533 56. Nandakumar V, Hebrink D, Jenson P, Kottom T, Limper AH. Differential
534 Macrophage Polarization from Pneumocystis in Immunocompetent and
535 Immunosuppressed Hosts: Potential Adjunctive Therapy during Pneumonia. *Infect*
536 *Immun.* 2017;85: e00939-16.
- 537 57. Tasaka S, Hasegawa N, Kobayashi S, Yamada W, Nishimura T, Takeuchi T, et al.
538 Serum indicators for the diagnosis of pneumocystis pneumonia. *Chest.* 2007;121:
539 1173-1180
- 540 58. Watanabe T, Yasuoka A, Tanuma J, Yazaki H, Honda H, Tsukada K, et al. Serum
541 (1->3) beta-D-glucan as a noninvasive adjunct marker for the diagnosis of
542 Pneumocystis pneumonia in patients with AIDS. *Clin Infect Dis.* 2009;49: 1128-
543 1131.