

1 **Title:** Longitudinal associations between mild behavioral impairment, sleep disturbance, and
2 progression to dementia

3 **Author Names:** Dinithi Mudalige¹, Dylan X. Guan¹, Maryam Ghahremani², Zahinoor Ismail,
4 MD^{3*}

5 (1) University of Calgary, Calgary, AB, Canada; (2) Hotchkiss Brain Institute, University of Calgary, Calgary, AB, Canada; (3)
6 Department of Psychiatry, Department of Community Health Sciences, Department of Clinical Neurosciences, Hotchkiss Brain
7 Institute, University of Calgary, Calgary, AB, Canada; Department of Clinical and Biomedical Sciences, Faculty of Health and
8 Life Sciences, University of Exeter, Exeter, UK.

9
10 **Running Title:** Mild behavioral impairment, sleep & dementia

11
12 *Corresponding Author:
13 Zahinoor Ismail
14 3280 Hospital Dr. NW Calgary AB
15 Canada T2N 4Z6
16 403-210-6900
17 ismailz@ucalgary.ca
18
19

20 **ABSTRACT**

21 **Background:** Clinical guidelines recommend incorporating non-cognitive markers like mild
22 behavioral impairment (MBI) and sleep disturbance (SD) into dementia screening to improve
23 detection.

24 **Objective:** We investigated the longitudinal associations between MBI, SD, and incident
25 dementia.

26 **Methods:** Participant data were from the National Alzheimer's Coordinating Center in the
27 United States. MBI was derived from the Neuropsychiatric Inventory Questionnaire (NPI-Q)
28 using a published algorithm. SD was determined using the NPI-Q nighttime behaviors item. Cox
29 proportional hazard regressions with time-dependant variables for MBI, SD, and cognitive
30 diagnosis were used to model associations between baseline 1) MBI and incident SD (n=11277);
31 2) SD and incident MBI (n=10535); 3) MBI with concurrent SD and incident dementia
32 (n=13544); and 4) MBI without concurrent SD and incident dementia (n=11921). Models were
33 adjusted for first-visit age, sex, education, cognitive diagnosis, race, and for multiple
34 comparisons using the Benjamini-Hochberg method.

35 **Results:** The rate of developing SD was 3.1-fold higher in older adults with MBI at baseline
36 compared to those without MBI (95%CI: 2.8-3.3). The rate of developing MBI was 1.5-fold
37 higher in older adults with baseline SD than those without SD (95%CI: 1.3-1.8). The rate of
38 developing dementia was 2.2-fold greater in older adults with both MBI and SD, as opposed to
39 SD alone (95%CI:1.9-2.6).

40 **Conclusions:** There is a bidirectional relationship between MBI and SD. Older adults with SD
41 develop dementia at higher rates when co-occurring with MBI. Future studies should explore the
42 mechanisms underlying these relationships, and dementia screening may be improved by
43 assessing for both MBI and SD.
44
45

46 **Keywords:** Alzheimer's disease, sleep disorders, neurobehavioral manifestations, dementia,
47 longitudinal studies
48

49 INTRODUCTION

50 Dementia is currently the seventh leading cause of death worldwide, and 152 million
51 people are expected to develop dementia by 2050 [1, 2]. Alzheimer’s disease (AD) is the most
52 common cause of dementia [3]. With some recent exceptions, clinical trials for AD disease-
53 modifying therapies have largely been unsuccessful at meeting primary endpoints, partly because
54 of administration too late in the disease course [4]. Therefore, there is a crucial need for
55 improved detection of older adults at risk of dementia to facilitate the development of therapeutic
56 and preventative interventions and to identify those with early-stage disease potentially suitable
57 to treat with disease-modifying therapies.

58 Clinical guidelines have recommended the use of non-cognitive markers of dementia for
59 improved dementia detection [5, 6]. Two of these markers are mild behavioral impairment (MBI)
60 and sleep disturbance (SD). MBI is a neurobehavioral syndrome that captures later-life emergent
61 and persistent neuropsychiatric symptoms (NPS), representing a change from longstanding
62 behavior or personality, as a high-risk state for incident dementia [7]. MBI symptoms are
63 categorized into five domains: decreased drive and motivation (apathy), affective dysregulation
64 (mood and anxiety symptoms), impulse dyscontrol (agitation, impulsivity, abnormal reward
65 salience), social inappropriateness (impaired social cognition), and abnormal perception or
66 thought content (hallucinations and delusions, i.e., psychotic symptoms). SD can include a
67 variety of disturbances, including insomnia, REM sleep disorder, sleep apnea, and restless leg
68 syndrome, the most common of which is insomnia (i.e., difficulties falling and staying asleep),
69 resulting in excessive daytime sedation [8].

70 Cross-sectional studies have indicated that MBI and SD may be associated with each
71 other. For instance, behavioral symptoms may contribute to insomnia [9]. Conversely, SD may
72 increase susceptibility to behavioral symptoms [10, 11].

73 Both MBI and SD are associated with greater cognitive decline and dementia. First,
74 studies have indicated that MBI is associated with cognitive impairment cross-sectionally [12,
75 13] and incident cognitive decline and dementia longitudinally in cognitively normal (CN) older
76 adults [14, 15], mixed CN and mild cognitive impairment (MCI) samples [16-22] and in MCI
77 [23]. Analogous to MBI, several studies have demonstrated associations between SD and
78 cognitive decline leading to dementia [24-26]. This risk extends to the preclinical stage in CN
79 older adults, as both MBI and SD can precede typical symptoms of AD, such as memory loss,
80 and associate with a greater risk of incident dementia [15, 27]. Despite evidence suggesting that
81 both MBI and SD are associated with dementia risk, the relationship between MBI and SD and
82 their combined prognostic utility is poorly understood.

83 This study investigated bidirectional associations between MBI and SD and determined if
84 the prognostic utility of SD for incident dementia could be improved by further adding MBI to
85 the modeling. We hypothesized that older adults with MBI would develop SD at a faster rate,
86 and vice versa, due to potential positive feedback. Additionally, we hypothesized that sleep-
87 disturbed older adults with MBI would develop dementia at a faster rate than SD older adults
88 without MBI due to the additive effects of MBI and SD.

89

90 **METHOD**

91 *Study Design*

92 The National Alzheimer's Coordinating Center (NACC) Uniform Data Set (UDS) was
93 used, including participant data collected approximately annually from June 2005 to May 2022.
94 The NACC was established by the National Institute on Aging and consisted of data
95 prospectively collected from 45 NIA-funded Alzheimer's Disease Research Centers (ADRCs)
96 across 26 states since 1999 [28]. Data are primarily collected by trained clinicians and clinical
97 staff from participants and informants. Extensive descriptions of NACC recruitment and data

98 collection procedures have been published elsewhere [28-31]. Participants and informants
99 provided informed consent at the ADRC, and the respective Institutional Review Board
100 approved all studies conducted at ADRCs that provided data to NACC.

101

102 *Participants*

103 The overall sample from the NACC-UDS consisted of 45100 participants. For this study
104 to satisfy the MBI criterion of later-life emergence of NPS [7], only participants older than 50
105 years old (n=1069) with no prior psychiatric or developmental disorders (e.g., post-traumatic
106 stress disorder (PTSD), bipolar disorder, anxiety disorder, schizophrenia, obsessive-compulsive
107 disorder (OCD), Downs syndrome, Huntington's, or Parkinson's disease were included ($n =$
108 14556). Participants missing data for demographic information (n=244) and Neuropsychiatric
109 Inventory Questionnaire (NPI-Q) domains required to derive MBI ($n = 910$) and SD status
110 ($n=72$) were excluded [Figure 1]. All participants were required to have no diagnosis of dementia
111 at baseline and have at least one follow-up visit. The clinician diagnosis in the NACC-UDS was
112 used to determine cognitive status, including dementia.

113 For the longitudinal analyses examining the association between baseline MBI status and
114 incident SD (and vice versa), additional criteria were applied, as illustrated in Figure 1. The
115 sample sizes for the analyses examining the association between baseline MBI and incident SD
116 and baseline SD and incident MBI were 11277 and 10535, respectively. The sample sizes for the
117 analyses examining the association between baseline MBI within sleep-disturbed older adults
118 and incident dementia and within non-sleep-disturbed older adults and incident dementia were
119 13544 and 11921, respectively.

120 *Measures*

121 Sleep disturbance

122 SD was measured using the NPI-Q nighttime behaviors item, as described in previous
123 studies [32-35]. The nighttime behaviors item asks informants: “Does the patient awaken you
124 during the night, rise too early in the morning, or take excessive naps during the day?” to which
125 informants respond “Yes” or “No” and rate the severity of the SD on a scale of 1-3 if present.
126 For the present study, only the reported presence or absence of SD was utilized.

127

128 **Mild Behavioral Impairment**

129 MBI was derived from the NPI-Q [36] using a published algorithm [37, 38]. The MBI
130 decreased motivation score, with a range of 0-3, was directly derived from the NPI-Q apathy
131 score. The MBI emotional dysregulation score, with a range of 0-9, was derived by summing the
132 NPI-Q depression, anxiety, and elation scores. The MBI impulse dyscontrol score, with a range
133 of 0-9, was derived by summing the NPI-Q agitation, irritability, and motor behavior scores. The
134 MBI social inappropriateness score, with a range of 0-3, was derived directly from the NPI-Q
135 disinhibition score. Lastly, the MBI abnormal perception/thought content score, ranging from 0-
136 6, was derived by summing the NPI-Q delusions and hallucination scores. The global MBI score
137 was then derived by summing up the five domain scores for each visit, with a range of 0-30, with
138 higher scores indicating greater MBI symptom severity. However, for this study, MBI was
139 dichotomized, where a global MBI score >0 indicated presence. To meet the MBI symptom
140 persistence criterion, symptoms had to be present (global MBI score>0) at two consecutive
141 NACC visits prior to dementia onset [7].

142

143 ***Statistical Analysis***

144 Participant demographics were summarized using descriptive statistics (means, standard
145 deviations, medians, interquartile ranges, ranges, counts, and percentages). To compare between
146 groups, Wilcoxon signed-rank tests, and chi-squared tests were used.

147 To determine baselines for survival models, a participant-specific baseline was generated
148 based on the first instance of symptom positivity for both MBI and SD. For each participant, the
149 baseline was set to the visit at which symptoms of either MBI or SD were endorsed to
150 correspond to the onset of behavioral symptoms or sleep disturbance. For participants who did
151 not develop MBI or SD before dementia incidence, the first study visit was considered baseline.
152 MBI positivity required two consecutive NPS+ visits consistent with the MBI symptom
153 persistence criterion [7]. The presence of SD, however, required only a single-visit endorsement
154 of symptoms.

155 Survival analyses were completed utilizing Kaplan-Meier (KM) survival curves and Cox
156 proportional hazards regressions with time-dependent variables for MBI, SD, and cognitive
157 diagnosis. Four models were built for 1) the association between baseline MBI status and
158 incident SD; 2) the association between baseline SD and incident MBI; 3) the association
159 between baseline MBI with concurrent SD and incident dementia; 4) the association between
160 baseline MBI without concurrent SD and incident dementia. Participants were followed up for a
161 maximum of 16.3 years for analyses 1, 2, and 4 and 15.4 years for the third analysis; however,
162 for ease of visualization, KM curves were truncated to 12 years without omitting any data [39].
163 Participant age at the first visit, sex, years of education, cognitive diagnosis (CN or MCI), and
164 race were included as covariates. These covariates were chosen because they are associated with
165 an increased risk for dementia [23, 40, 41]. All p-values were adjusted for multiple comparisons
166 using the Benjamini–Hochberg method to generate q-values. The proportional hazards (PH)
167 assumption of the Cox PH models was confirmed using Schoenfeld residuals. R version 4.0.5
168 was used to conduct all statistical analyses [42].

169

170 **RESULTS**

171 *Participant Characteristics*

172 Baseline participant demographics have been summarized in Table 1. Table 2 include
173 participant characteristics for each model stratified by baseline MBI or SD status. In general, the
174 four analyses had similar sample sizes, with the analysis of baseline MBI status in those without
175 SD and incident dementia having the largest sample of 11921 participants. Across analyses, at
176 baseline, participants were, on average, about 72 years old, had 15 years of education, and were
177 majority female and CN (Table 1).

178

179 ***Analysis 1: Association Between Baseline MBI and Incident Sleep Disturbance***

180 Of the total sample ($n=11277$), 6658 (59.0%) were female, with a mean first-visit age of
181 72.7 years ($SD=8.8$, range=50-104), and mean 15.7 ($SD=3.1$, range=0-29) years of education. Of
182 this sample, 8579 (76.1%) were CN, 2698 (23.9%) had MCI, and 8721 (77.3%) were White. A
183 total of 1562 (13.9%) participants had MBI, and 9715 (86.1%) had no MBI. The MBI group
184 comprised significantly more males and those with MCI [Table 2].

185 Over the total follow-up period of 4.8 ($SD=3.6$, range=0.4-16.3) years, 2467 (21.9%)
186 individuals developed SD before dementia. KM survival curves at a median follow-up time of 6
187 years showed that sleep-disturbance-free survival in the no MBI group was 75.5% (95%CI:74.3-
188 76.6) and in the MBI group was 47.7% (95% CI:44.1-51.5) [Figure 2]. Cox proportional hazards
189 regressions showed that the MBI group had a 3.0-fold (95%CI:2.8-3.3, $q<0.001$) greater rate of
190 developing SD relative to those without MBI [Table 3].

191

192 ***Analysis 2: Association Between Baseline Sleep Disturbance and Incident MBI***

193 Of the total sample ($n=10535$), 6412 (60.9%) were female, with a mean first-visit age of
194 72.7 ($SD=8.8$, range=50-101) years, and mean 15.7 ($SD=3.2$, range=0-29) years of education. Of
195 this sample, 8375 (79.5%) were CN, 2160 (20.5%) had MCI, and 8063 (76.5%) were White. A

196 total of 820 (7.8%) participants had SD, and 9715 (92.2%) had no SD. The SD group comprised
197 significantly more females and CN individuals [Table 2].

198 Over the total follow-up period of 4.9 (SD=3.6, range=0.4-16.3), 1504 (14.3%)
199 individuals developed MBI. KM survival curves at a median follow-up time of 6 years showed
200 that MBI-free survival in the no SD group was 81.6% (95%CI:80.5-82.6) and in the SD group,
201 was 74.3% (95%CI:70.2-78.7) [Figure 2]. Cox proportional hazards regressions showed that
202 participants with SD at baseline had a 1.5-fold (95%CI:1.3-1.8, $q < 0.001$) greater rate of
203 developing MBI than those without SD [Table 3].

204

205 ***Analysis 3: Association Between Baseline Sleep Disturbance and Incident Dementia, stratified***
206 ***by MBI status***

207 Of the total sample ($n=1567$), 785 (50.1%) were female, with a mean first-visit age of
208 72.2 (SD=8.8, range=50-101) years and a mean 15.4 (SD=3.3, range=0-30) years of education.
209 Of this sample, 797 (50.9%) were CN, 770 (49.1%) had MCI, and 1260 (80.4%) were White. Of
210 the sample, 707 (45.1) individuals had MBI at baseline, and 860 (54.9) had no MBI at baseline.
211 On average, participants with MBI were more likely to be male and have MCI [Table 2].

212 Over the average total follow-up period of 4.2 (SD=3.3, range=0.4-15.4) years, 411
213 (26.2%) individuals developed dementia. In those with SD, KM survival curves out to 6 years
214 showed that dementia-free survival in the no MBI group was 79.6% (95% CI:76.0-83.4) and in
215 the MBI group, was 43.7% (38.7-49.4) [Figure 2].

216 Cox proportional hazards regressions showed that sleep-disturbed older adults with MBI
217 had a 2.2-fold (95%CI:1.9-2.6; $q < 0.001$) greater rate of developing dementia compared to sleep-
218 disturbed older adults without MBI [Table 3].

219

220 *Analysis 4: Association Between No Baseline Sleep Disturbance and Incident Dementia,*
221 *stratified by MBI status*

222 Of the total sample ($n=11921$), 6991 (50.1%) were female, with a mean first-visit age of
223 72.9 (SD=8.8, range=50-104) years and a mean 15.7 (SD=3.1, range=0-29) years of education.
224 Of this sample, 8628 (72.4%) were CN, 3293 (27.6%) had MCI, and 9269 (77.8%) were White.
225 Of the sample, 1902 (16.0) individuals had MBI at baseline, and 10019 (84.0) had no MBI at
226 baseline. On average, participants with MBI were more likely to be male and have MCI [Table
227 2].

228 Over the average total follow-up period of 5.0 (SD=3.6, range=0.4-16.3) years, 1959
229 (16.4%) individuals developed dementia. In those without SD, KM survival curves out to 6 years
230 showed that dementia-free survival in the no MBI group was 85.6% (95% CI:84.7-86.5) and in
231 the MBI group was 51.8% (48.8-54.9) [Figure 2].

232 Cox proportional hazards regressions showed that non-sleep-disturbed older adults with
233 MBI had a 1.9-fold (95%CI:1.8-2.0; $q<0.001$) greater rate of developing dementia compared to
234 non-sleep-disturbed older adults without MBI [Table 3].

235

236 **DISCUSSION**

237 This study aimed to investigate the longitudinal associations between MBI and SD and
238 explore the SD-associated risk for incident dementia in those with and without comorbid MBI.
239 As hypothesized, this study demonstrated a bidirectional longitudinal relationship between MBI
240 and SD; older adults with MBI at baseline developed SD at a greater rate than those without
241 MBI, and those with SD at baseline developed MBI at a greater rate than those without SD.
242 Furthermore, individuals concurrently reporting both SD and MBI and individuals experiencing
243 only MBI developed dementia at faster rates than those with only SD or no SD, respectively.

244 This indicates that there may be additive effects of MBI and SD when considering the risk to
245 dementia.

246 Previous literature has cross-sectionally linked certain NPS to SD. One study found the
247 presence of depression, disinhibition, and aberrant motor behavior to be associated with a greater
248 frequency and severity of SD [43]. This finding may be explained by the difficulties these
249 behavioral symptoms pose when attempting to fall asleep and stay asleep. Those experiencing
250 depression have impaired sleep continuity with frequent and long periods of wakefulness,
251 reduced sleep efficiency, delayed sleep onset, and a reduced total sleep time [9]. SD in
252 behaviorally disturbed individuals may arise from a disruption of the homeostatic and circadian
253 drives to sleep [44]. The reverse relationship has also been postulated, where SD may increase
254 susceptibility to behavioral symptoms such as anxiety and depression [10], poor emotional
255 generation and regulation [45], and decreased inhibition [11]. This association may be due to
256 functional connectivity deficits between the amygdala and the ventral anterior cingulate cortex
257 (vACC) [46], leading to enhanced amygdala responses to negative stimuli, causing increased
258 aggression and agitation. Sleep deficiencies can also reduce the ability of the medial prefrontal
259 cortex (mPFC) to inhibit amygdala activity, which, similarly, may lead to behavioral and
260 emotional instability [47, 48]. Thus, in line with previous literature, the findings of the present
261 study indicate a possible bidirectional relationship between SD and behavioral impairments, such
262 that behavioral symptoms may lead to the development of SD and vice versa.

263 SD as a risk factor can contribute to underlying AD pathology [49-51] but may also be
264 sequelae of existing AD pathology in older adults (Ju et al., 2014). Hence, the bidirectional
265 association between MBI and SD and a higher rate of decline to dementia with both MBI and SD
266 may be explained by a common pathology. Having MBI may indicate a more advanced
267 pathology, which is more likely to disrupt regions of the brain that regulate sleep, leading to SD
268 [16, 52-59]. Alternatively, a positive feedback mechanism may be in play such that increased SD

269 contributes to MBI, and MBI contributes to SD. In such a scenario, therapies aimed at alleviating
270 MBI symptoms may help reduce the development or exacerbation of SD, as the reduction of
271 behavioral symptoms may increase the likelihood of falling asleep and staying asleep.
272 Conversely, existing medications for the management of SD may help directly or indirectly
273 reduce behavioral symptoms such as anxiety and depression [60].

274 Additionally, these results are consistent with previous studies that have established the
275 association between MBI, sleep, and dementia [24, 26, 49]. First, MBI has been linked to
276 incident cognitive decline and dementia [61]. The greater dementia risk in those with MBI may
277 relate to the association of MBI with pathological hallmarks of AD, like the formation of
278 amyloid- β ($A\beta$) plaques and hyperphosphorylation and aggregation of tau proteins [62]. Studies
279 have shown MBI to be associated with $A\beta$ accumulation [56, 63-65] and hyperphosphorylated
280 tau deposition [66, 67]. Second, studies have found that in non-dementia older adults, those with
281 SD have a greater risk of developing dementia (Lee et al., 2020; Robbins et al., 2021; Shi et al.,
282 2018). Sleep-wake cycles influence $A\beta$ levels in the brain, where decreased sleep leads to $A\beta$
283 accumulation [49-51]. The formation of $A\beta$ plaques is proposed to decrease sleep quality directly
284 by disrupting neuronal function in brain regions involved in sleep-wake cycles [68] or indirectly,
285 worsening the effects in a positive-feedback manner [49]. Studies have also found that tau
286 accumulation increases with greater SD and vice versa [69]. In light of the association between
287 MBI and SD with greater cognitive decline and incident dementia due to similar pathological
288 changes, combining the markers may enhance the ability to detect or predict dementia onset.

289 Based on these findings, clinicians might consider screening for SD and further assess
290 MBI presence to improve dementia risk assessment in their patients. Several studies suggest that
291 combining markers of dementia, such as cognition, gait, and MBI, may improve dementia
292 prognostication [70, 71]. Thus, these markers should be incorporated into dementia risk
293 assessments to best aid early detection.

294 This study does have limitations. Using a single item from the NPI-Q to assess SD, rated
295 by an informant, may not identify all presentations of SD, as it captures insomnia and excessive
296 daytime sedation (EDS). While EDS is a symptom of a variety of SD [72], it is important to
297 assess this relationship, specifically examining SD such as REM sleep disorder, sleep apnea, and
298 restless leg syndrome. This will allow for a more complete understating of the impact of SD on
299 incident dementia, especially as SD, such as REM sleep disorder, are associated with specific
300 dementias like Lewy body dementia [73]. Additionally, the use of NPI-Q to derive MBI scores
301 poses a potential limitation as this questionnaire was not designed initially to measure MBI. For
302 instance, the two-consecutive visits method was used to operationalize MBI because the NPI-Q
303 has a one-month reference range. However, because symptom presence between study visits
304 outside of the reference range of the NPI-Q cannot be confirmed, the symptom persistence
305 criteria required for MBI diagnosis might not be met. The MBI checklist (MBI-C) was
306 specifically developed for the detection of MBI, has a 6-month reference range, and explicitly
307 captures later-life emergent and persistent NPS [7, 74]. However, the MBI-C has only very
308 recently been included in the NACC UDS as an optional measure, so it will take some time to
309 generate sufficient data with this scale. Therefore, in legacy datasets, using operational
310 definitions or algorithms to derive MBI status from other measures is necessary. Dichotomizing
311 SD and MBI did not allow for the assessment of the severity of these items, which may have
312 provided additional insights. Nonetheless, we did find significant associations with discrete
313 variables. Future studies could explore this relationship with more robust and continuous
314 indicators of MBI and SD to ascertain whether this relationship holds when the severity of
315 symptoms is considered. Lastly, we acknowledge there are other variables, in addition to the
316 covariates used in this study, that could impact the relationships investigated in this study.
317 Therefore, future studies should investigate how other variables associated with increased

318 dementia risk, such as obesity, type 2 diabetes, traumatic brain injury, stroke, and hearing loss,
319 impact these relationships [75].

320 Regardless, this study establishes a starting point for further investigations regarding the
321 bidirectional relationship between MBI and SD, the relationship between SD and dementia, and
322 MBI and dementia. Additionally, by illustrating the bidirectional relationship and the
323 relationship with incident dementia, this study emphasizes the importance of non-cognitive
324 markers of dementia in pre-dementia screening, especially the importance of SD. Being
325 longitudinal in design, this study allowed exploration of the bidirectional relationship between
326 MBI and SD. The large sample size also provided sufficient statistical power to test several
327 hypotheses, enabling a fuller understanding of the relationship between MBI, SD, and dementia.

328 **CONCLUSION**

329 This study demonstrated that older adults with MBI have a greater rate of incident SD,
330 and those with SD have a greater incidence of MBI. Furthermore, when participants experienced
331 SD along with MBI, the rate of developing dementia was greater compared to experiencing only
332 SD. These findings set the stage for treatment studies to determine if treating symptoms of MBI
333 could reduce the incidence of SD and vice versa, as well as the impact of treating both on
334 incident cognitive decline and dementia. Nonetheless, both sleep and MBI should be
335 incorporated into dementia risk assessments to aid with early detection.

336

337

338

339

340

341

342

343 **ACKNOWLEDGEMENTS**

344 The authors have no acknowledgments to report.

345

346 **FUNDING**

- 347 • Dinithi Mudalige received funding from Alberta Innovates as part of the 2022 Summer
348 Student Award and the Provincial Seniors Health and Continuing Care Studentship as
349 part of the 2023 Summer Student Award; Alberta Innovates and Seniors Health played no
350 role in any part of the study design, analysis, or interpretation of this study.
- 351 • Zahinoor Ismail is funded by the Canadian Institutes of Health Research (BCA2633) and
352 the National Institute for Health and Care Research (NIHR) Exeter Biomedical Research
353 Centre. The views expressed are those of the author(s) and not necessarily those of the
354 NIHR or the Department of Health and Social Care.
- 355 • The NACC database is funded by NIA/NIH Grant U24 AG072122. NACC data are
356 contributed by the NIA-funded ADRCs: P30 AG062429 (PI James Brewer, MD, PhD),
357 P30 AG066468 (PI Oscar Lopez, MD), P30 AG062421 (PI Bradley Hyman, MD, PhD),
358 P30 AG066509 (PI Thomas Grabowski, MD), P30 AG066514 (PI Mary Sano, PhD), P30
359 AG066530 (PI Helena Chui, MD), P30 AG066507 (PI Marilyn Albert, PhD), P30
360 AG066444 (PI John Morris, MD), P30 AG066518 (PI Jeffrey Kaye, MD), P30
361 AG066512 (PI Thomas Wisniewski, MD), P30 AG066462 (PI Scott Small, MD), P30
362 AG072979 (PI David Wolk, MD), P30 AG072972 (PI Charles DeCarli, MD), P30
363 AG072976 (PI Andrew Saykin, PsyD), P30 AG072975 (PI David Bennett, MD), P30
364 AG072978 (PI Neil Kowall, MD), P30 AG072977 (PI Robert Vassar, PhD), P30
365 AG066519 (PI Frank LaFerla, PhD), P30 AG062677 (PI Ronald Petersen, MD, PhD),
366 P30 AG079280 (PI Eric Reiman, MD), P30 AG062422 (PI Gil Rabinovici, MD), P30
367 AG066511 (PI Allan Levey, MD, PhD), P30 AG072946 (PI Linda Van Eldik, PhD), P30
368 AG062715 (PI Sanjay Asthana, MD, FRCP), P30 AG072973 (PI Russell Swerdlow,
369 MD), P30 AG066506 (PI Todd Golde, MD, PhD), P30 AG066508 (PI Stephen
370 Strittmatter, MD, PhD), P30 AG066515 (PI Victor Henderson, MD, MS), P30
371 AG072947 (PI Suzanne Craft, PhD), P30 AG072931 (PI Henry Paulson, MD, PhD), P30
372 AG066546 (PI Sudha Seshadri, MD), P20 AG068024 (PI Erik Roberson, MD, PhD), P20
373 AG068053 (PI Justin Miller, PhD), P20 AG068077 (PI Gary Rosenberg, MD), P20
374 AG068082 (PI Angela Jefferson, PhD), P30 AG072958 (PI Heather Whitson, MD), P30
375 AG072959 (PI James Leverenz, MD).

376 **CONFLICT OF INTEREST**

377 ZI reports serving as a consultant/advisor to Eisai, Lundbeck, Otsuka, and Roche. All authors
378 have no conflict of interest to report.

379

380 **DATA AVAILABILITY**

381 The data used in this study were obtained from NACC (<https://naccdata.org/>). Data are available
382 free of charge to bona fide researchers who submit a research proposal.

383

384 **REFERENCES**

385

- 386 [1] Lynch C (2020) World Alzheimer Report 2019: Attitudes to dementia, a global survey:
387 Public health: Engaging people in ADRD research. *Alzheimer's & Dementia* **16**, e038255.
- 388 [2] World Health Organization (2021) Global status report on the public health response to
389 dementia.
- 390 [3] Morris JC (1996) Classification of dementia and Alzheimer's disease. *Acta Neurologica*
391 *Scandinavica* **94**, 41-50.
- 392 [4] Gauthier S, Albert M, Fox N, Goedert M, Kivipelto M, Mestre-Ferrandiz J, Middleton
393 LT (2016) Why has therapy development for dementia failed in the last two decades?
394 *Alzheimer's & Dementia* **12**, 60-64.
- 395 [5] Ismail Z, Black SE, Camicioli R, Chertkow H, Herrmann N, Laforce Jr R, Montero-
396 Odasso M, Rockwood K, Rosa-Neto P, Seitz D (2020) Recommendations of the 5th
397 Canadian Consensus Conference on the diagnosis and treatment of dementia. *Alzheimer's*
398 *& Dementia* **16**, 1182-1195.
- 399 [6] Montero-Odasso M, Pieruccini-Faria F, Ismail Z, Li K, Lim A, Phillips N, Kamkar N,
400 Sarquis-Adamson Y, Speechley M, Theou O, Verghese J, Wallace L, Camicioli R (2020)
401 CCCDTD5 recommendations on early non cognitive markers of dementia: A Canadian
402 consensus. *Alzheimer's Dement (N Y)* **6**, e12068.
- 403 [7] Ismail Z, Smith EE, Geda Y, Sultzer D, Brodaty H, Smith G, Agüera-Ortiz L, Sweet R,
404 Miller D, Lyketsos CG (2016) Neuropsychiatric symptoms as early manifestations of
405 emergent dementia: provisional diagnostic criteria for mild behavioral impairment.
406 *Alzheimer's & Dementia* **12**, 195-202.
- 407 [8] Miner B, Kryger MH (2017) Sleep in the Aging Population. *Sleep Med Clin* **12**, 31-38.
- 408 [9] Nutt D, Wilson S, Paterson L (2008) Sleep disorders as core symptoms of depression.
409 *Dialogues Clin Neurosci* **10**, 329-336.
- 410 [10] Babson KA, Trainor CD, Feldner MT, Blumenthal H (2010) A test of the effects of acute
411 sleep deprivation on general and specific self-reported anxiety and depressive symptoms:
412 An experimental extension. *Journal of Behavior Therapy and Experimental Psychiatry*
413 **41**, 297-303.
- 414 [11] Drummond SPA, Paulus MP, Tapert SF (2006) Effects of two nights sleep deprivation
415 and two nights recovery sleep on response inhibition. *Journal of Sleep Research* **15**, 261-
416 265.
- 417 [12] Rouse HJ, Small BJ, Schinka JA, Loewenstein DA, Duara R, Potter H (2021) Mild
418 behavioral impairment as a predictor of cognitive functioning in older adults. *Int*
419 *Psychogeriatr* **33**, 285-293.

- 420 [13] Kassam F, Chen H, Nosheny RL, McGirr A, Williams T, Ng N, Camacho M, Mackin
421 RS, Weiner MW, Ismail Z (2022) Cognitive profile of people with mild behavioral
422 impairment in Brain Health Registry participants. *International Psychogeriatrics*, 1-10.
- 423 [14] Creese B, Brooker H, Ismail Z, Wesnes KA, Hampshire A, Khan Z, Megalogeni M,
424 Corbett A, Aarsland D, Ballard C (2019) Mild behavioral impairment as a marker of
425 cognitive decline in cognitively normal older adults. *The American Journal of Geriatric*
426 *Psychiatry* **27**, 823-834.
- 427 [15] Ismail Z, McGirr A, Gill S, Hu S, Forkert ND, Smith EE (2021) Mild Behavioral
428 Impairment and Subjective Cognitive Decline Predict Cognitive and Functional Decline.
429 *J Alzheimers Dis* **80**, 459-469.
- 430 [16] Ghahremani M, Nathan S, Smith EE, McGirr A, Goodyear B, Ismail Z (2023) Functional
431 connectivity and mild behavioral impairment in dementia-free elderly. *Alzheimer's &*
432 *Dementia: Translational Research & Clinical Interventions* **9**, e12371.
- 433 [17] Matsuoka T, Ismail Z, Narumoto J (2019) Prevalence of Mild Behavioral Impairment and
434 Risk of Dementia in a Psychiatric Outpatient Clinic.
- 435 [18] Kan CN, Cano J, Zhao X, Ismail Z, Chen CL, Xu X (2022) Prevalence, Clinical
436 Correlates, Cognitive Trajectories, and Dementia Risk Associated With Mild Behavioral
437 Impairment in Asians. *J Clin Psychiatry* **83**.
- 438 [19] Wolfova K, Creese B, Aarsland D, Ismail Z, Corbett A, Ballard C, Hampshire A,
439 Cermakova P (2022) Gender/Sex Differences in the Association of Mild Behavioral
440 Impairment with Cognitive Aging. *J Alzheimers Dis* **88**, 345-355.
- 441 [20] Vellone D, Ghahremani M, Goodarzi Z, Forkert ND, Smith EE, Ismail Z (2022) Apathy
442 and APOE in mild behavioral impairment, and risk for incident dementia. *Alzheimers*
443 *Dement (N Y)* **8**, e12370.
- 444 [21] Ebrahim IM, Ghahremani M, Camicioli R, Smith EE, Ismail Z (2023) Effects of race,
445 baseline cognition, and APOE on the association of affective dysregulation with incident
446 dementia: A longitudinal study of dementia-free older adults. *Journal of Affective*
447 *Disorders* **332**, 9-18.
- 448 [22] Ismail Z, Ghahremani M, Amlish Munir M, Fischer CE, Smith EE, Creese B (2023) A
449 longitudinal study of late-life psychosis and incident dementia and the potential effects of
450 race and cognition. *Nature Mental Health* **1**, 273-283.
- 451 [23] McGirr A, Nathan S, Ghahremani M, Gill S, Smith EE, Ismail Z (2022) Progression to
452 Dementia or Reversion to Normal Cognition in Mild Cognitive Impairment as a Function
453 of Late-Onset Neuropsychiatric Symptoms. *Neurology* **98**, e2132.
- 454 [24] Shi L, Chen S-J, Ma M-Y, Bao Y-P, Han Y, Wang Y-M, Shi J, Vitiello MV, Lu L (2018)
455 Sleep disturbances increase the risk of dementia: a systematic review and meta-analysis.
456 *Sleep medicine reviews* **40**, 4-16.
- 457 [25] Robbins R, Quan SF, Weaver MD, Bormes G, Barger LK, Czeisler CA (2021)
458 Examining sleep deficiency and disturbance and their risk for incident dementia and all-
459 cause mortality in older adults across 5 years in the United States. *Aging (Albany NY)* **13**,
460 3254-3268.
- 461 [26] Lee W, Gray SL, Barthold D, Maust DT, Marcum ZA (2020) Association Between
462 Informant-Reported Sleep Disturbance and Incident Dementia: An Analysis of the
463 National Alzheimer's Coordinating Center Uniform Data Set. *Journal of Applied*
464 *Gerontology* **41**, 285-294.
- 465 [27] Sterniczuk R, Theou O, Rusak B, Rockwood K (2013) Sleep disturbance is associated
466 with incident dementia and mortality. *Current Alzheimer research* **10**, 767-775.

- 467 [28] Beekly DL, Ramos EM, van Belle G, Deitrich W, Clark AD, Jacka ME, Kukull WA
468 (2004) The national Alzheimer's coordinating center (NACC) database: an Alzheimer
469 disease database. *Alzheimer Disease & Associated Disorders* **18**, 270-277.
- 470 [29] Besser L, Kukull W, Knopman DS, Chui H, Galasko D, Weintraub S, Jicha G, Carlsson
471 C, Burns J, Quinn J (2018) Version 3 of the National Alzheimer's Coordinating Center's
472 uniform data set. *Alzheimer disease and associated disorders*.
- 473 [30] Morris JC, Weintraub S, Chui HC, Cummings J, DeCarli C, Ferris S, Foster NL, Galasko
474 D, Graff-Radford N, Peskind ER (2006) The Uniform Data Set (UDS): clinical and
475 cognitive variables and descriptive data from Alzheimer Disease Centers. *Alzheimer
476 Disease & Associated Disorders* **20**, 210-216.
- 477 [31] Weintraub S, Salmon D, Mercaldo N, Ferris S, Graff-Radford NR, Chui H, Cummings J,
478 DeCarli C, Foster NL, Galasko D (2009) The Alzheimer's disease centers' uniform data
479 set (UDS): The neuropsychological test battery. *Alzheimer disease and associated
480 disorders* **23**, 91.
- 481 [32] Bliwise DL, Mercaldo ND, Avidan AY, Boeve BF, Greer SA, Kukull WA (2011) Sleep
482 disturbance in dementia with Lewy bodies and Alzheimer's disease: a multicenter
483 analysis. *Dementia and geriatric cognitive disorders* **31**, 239-246.
- 484 [33] Bubu OM, Williams ET, Umasabor-Bubu OQ, Kaur SS, Turner AD, Blanc J, Cejudo JR,
485 Mullins AE, Parekh A, Kam K (2021) Interactive Associations of Neuropsychiatry
486 Inventory-Questionnaire Assessed Sleep Disturbance and Vascular Risk on Alzheimer's
487 Disease Stage Progression in Clinically Normal Older Adults. *Frontiers in Aging
488 Neuroscience* **13**.
- 489 [34] Burke SL, Hu T, Spadola CE, Burgess A, Li T, Cadet T (2018) Treatment of Sleep
490 Disturbance May Reduce the Risk of Future Probable Alzheimer's Disease. *Journal of
491 Aging and Health* **31**, 322-342.
- 492 [35] Burke SL, Hu T, Spadola CE, Li T, Naseh M, Burgess A, Cadet T (2018) Mild cognitive
493 impairment: associations with sleep disturbance, apolipoprotein e4, and sleep
494 medications. *Sleep Medicine* **52**, 168-176.
- 495 [36] Kaufer DI, Cummings JL, Ketchel P, Smith V, MacMillan A, Shelley T, Lopez OL,
496 DeKosky ST (2000) Validation of the NPI-Q, a brief clinical form of the
497 Neuropsychiatric Inventory. *The Journal of neuropsychiatry and clinical neurosciences*
498 **12**, 233-239.
- 499 [37] Sheikh F, Ismail Z, Mortby ME, Barber P, Cieslak A, Fischer K, Granger R, Hogan DB,
500 Mackie A, Maxwell CJ (2018) Prevalence of mild behavioral impairment in mild
501 cognitive impairment and subjective cognitive decline, and its association with caregiver
502 burden. *International Psychogeriatrics* **30**, 233-244.
- 503 [38] Mortby ME, Ismail Z, Anstey KJ (2018) Prevalence estimates of mild behavioral
504 impairment in a population-based sample of pre-dementia states and cognitively healthy
505 older adults. *Int Psychogeriatr* **30**, 221-232.
- 506 [39] Pocock SJ, Clayton TC, Altman DG (2002) Survival plots of time-to-event outcomes in
507 clinical trials: good practice and pitfalls. *Lancet* **359**, 1686-1689.
- 508 [40] Lee M, Whitsel E, Avery C, Hughes TM, Griswold ME, Sedaghat S, Gottesman RF,
509 Mosley TH, Heiss G, Lutsey PL (2022) Variation in Population Attributable Fraction of
510 Dementia Associated With Potentially Modifiable Risk Factors by Race and Ethnicity in
511 the US. *JAMA Network Open* **5**, e2219672-e2219672.
- 512 [41] Chen J-H, Lin K-P, Chen Y-C (2009) Risk factors for dementia. *Journal of the Formosan
513 Medical Association* **108**, 754-764.
- 514 [42] R Core Team (2022), ed. Computing RFFS, Austria.

- 515 [43] García-Alberca JM, Lara JP, Cruz B, Garrido V, Gris E, Barbancho MÁ (2013) Sleep
516 disturbances in Alzheimer's disease are associated with neuropsychiatric symptoms and
517 antidepressant treatment. *The Journal of nervous and mental disease* **201**, 251-257.
- 518 [44] Borbély AA (1982) A two process model of sleep regulation. *Hum neurobiol* **1**, 195-204.
- 519 [45] Palmer CA, Alfano CA (2017) Sleep and emotion regulation: An organizing, integrative
520 review. *Sleep Medicine Reviews* **31**, 6-16.
- 521 [46] Motomura Y, Kitamura S, Oba K, Terasawa Y, Enomoto M, Katayose Y, Hida A,
522 Moriguchi Y, Higuchi S, Mishima K (2013) Sleep debt elicits negative emotional
523 reaction through diminished amygdala-anterior cingulate functional connectivity. *PloS*
524 *one* **8**, e56578.
- 525 [47] Motomura Y, Katsunuma R, Yoshimura M, Mishima K (2017) Two days' sleep debt
526 causes mood decline during resting state via diminished amygdala-prefrontal
527 connectivity. *Sleep* **40**.
- 528 [48] Ismail Z, Herrmann N, Francis PL, Rothenburg LS, Lobaugh NJ, Leibovitch FS, Black
529 SE, Lanctôt KL (2009) A SPECT Study of Sleep Disturbance and Alzheimer's Disease.
530 *Dementia and Geriatric Cognitive Disorders* **27**, 254-259.
- 531 [49] Ju Y-ES, Lucey BP, Holtzman DM (2014) Sleep and Alzheimer disease pathology--a
532 bidirectional relationship. *Nature reviews. Neurology* **10**, 115-119.
- 533 [50] Winer JR, Mander BA, Kumar S, Reed M, Baker SL, Jagust WJ, Walker MP (2020)
534 Sleep Disturbance Forecasts β -Amyloid Accumulation across Subsequent Years. *Current*
535 *Biology* **30**, 4291-4298.e4293.
- 536 [51] Kang J-E, Lim MM, Bateman RJ, Lee JJ, Smyth LP, Cirrito JR, Fujiki N, Nishino S,
537 Holtzman DM (2009) Amyloid- β dynamics are regulated by orexin and the sleep-wake
538 cycle. *Science* **326**, 1005-1007.
- 539 [52] Matsuoka T, Imai A, Narumoto J (2023) Neuroimaging of mild behavioral impairment: A
540 systematic review. *Psychiatry and Clinical Neurosciences Reports* **2**, e81.
- 541 [53] Matuskova V, Ismail Z, Nikolai T, Markova H, Cechova K, Nedelska Z, Laczó J, Wang
542 M, Hort J, Vyhnalek M (2021) Mild Behavioral Impairment Is Associated With Atrophy
543 of Entorhinal Cortex and Hippocampus in a Memory Clinic Cohort. *Front Aging*
544 *Neurosci* **13**, 643271.
- 545 [54] Creese B, Arathimos R, Brooker H, Aarsland D, Corbett A, Lewis C, Ballard C, Ismail Z
546 (2021) Genetic risk for Alzheimer's disease, cognition, and mild behavioral impairment
547 in healthy older adults. *Alzheimer's & Dementia: Diagnosis, Assessment & Disease*
548 *Monitoring* **13**, e12164.
- 549 [55] Miao R, Chen HY, Robert P, Smith EE, Ismail Z (2021) White matter hyperintensities
550 and mild behavioral impairment: Findings from the MEMENTO cohort study. *Cereb*
551 *Circ Cogn Behav* **2**, 100028.
- 552 [56] Miao R, Chen HY, Gill S, Naude J, Smith EE, Ismail Z (2022) Plasma β -Amyloid in
553 Mild Behavioural Impairment - Neuropsychiatric Symptoms on the Alzheimer's
554 Continuum. *J Geriatr Psychiatry Neurol* **35**, 434-441.
- 555 [57] Naude JP, Gill S, Hu S, McGirr A, Forkert ND, Monchi O, Stys PK, Smith EE, Ismail Z,
556 Initiative AsDN (2020) Plasma neurofilament light: a marker of neurodegeneration in
557 mild behavioral impairment. *Journal of Alzheimer's disease* **76**, 1017-1027.
- 558 [58] Shu J, Qiang Q, Yan Y, Wen Y, Ren Y, Wei W, Zhang L (2021) Distinct patterns of
559 brain atrophy associated with mild behavioral impairment in cognitively normal elderly
560 adults. *International Journal of Medical Sciences* **18**, 2950.
- 561 [59] Gill S, Wang M, Mouches P, Rajashekar D, Sajobi T, MacMaster FP, Smith EE, Forkert
562 ND, Ismail Z (2021) Neural correlates of the impulse dyscontrol domain of mild
563 behavioral impairment. *Int J Geriatr Psychiatry* **36**, 1398-1406.

- 564 [60] Krystal AD (2020) Sleep therapeutics and neuropsychiatric illness.
565 *Neuropsychopharmacology* **45**, 166-175.
- 566 [61] Creese B, Ismail Z (2022) Mild behavioral impairment: measurement and clinical
567 correlates of a novel marker of preclinical Alzheimer's disease. *Alzheimers Res Ther* **14**,
568 2.
- 569 [62] Jack Jr CR, Knopman DS, Jagust WJ, Petersen RC, Weiner MW, Aisen PS, Shaw LM,
570 Vemuri P, Wiste HJ, Weigand SD (2013) Update on hypothetical model of Alzheimer's
571 disease biomarkers. *Lancet neurology* **12**, 207.
- 572 [63] Sun Y, Xu W, Chen K-L, Shen X-N, Tan L, Yu J-T, for the Alzheimer's Disease
573 Neuroimaging I (2021) Mild behavioral impairment correlates of cognitive impairments
574 in older adults without dementia: mediation by amyloid pathology. *Translational*
575 *Psychiatry* **11**, 577.
- 576 [64] Lussier FZ, Pascoal TA, Chamoun M, Therriault J, Tissot C, Savard M, Kang MS,
577 Mathotaarachchi S, Benedet AL, Parsons M, Qureshi MNI, Thomas É M, Shin M, Dion
578 LA, Massarweh G, Soucy JP, Tsai IH, Vitali P, Ismail Z, Rosa-Neto P, Gauthier S (2020)
579 Mild behavioral impairment is associated with β -amyloid but not tau or
580 neurodegeneration in cognitively intact elderly individuals. *Alzheimers Dement* **16**, 192-
581 199.
- 582 [65] Ismail Z, Leon R, Creese B, Ballard C, Robert P, Smith EE (2023) Optimizing detection
583 of Alzheimer's disease in mild cognitive impairment: a 4-year biomarker study of mild
584 behavioral impairment in ADNI and MEMENTO. *Mol Neurodegener* **in press**.
- 585 [66] Johansson M, Stomrud E, Insel PS, Leuzy A, Johansson PM, Smith R, Ismail Z,
586 Janelidze S, Palmqvist S, van Westen D, Mattsson-Carlsson N, Hansson O (2021) Mild
587 behavioral impairment and its relation to tau pathology in preclinical Alzheimer's disease.
588 *Transl Psychiatry* **11**, 76.
- 589 [67] Ghahremani M, Wang M, Chen H-Y, Zetterberg H, Smith E, Ismail Z, Initiative AsDN
590 (2023) Plasma Phosphorylated Tau at Threonine 181 and Neuropsychiatric Symptoms in
591 Preclinical and Prodromal Alzheimer Disease. *Neurology* **100**, e683-e693.
- 592 [68] Braak H, Braak E (1991) Neuropathological staging of Alzheimer-related changes. *Acta*
593 *neuropathologica* **82**, 239-259.
- 594 [69] Wang C, Holtzman DM (2020) Bidirectional relationship between sleep and Alzheimer's
595 disease: role of amyloid, tau, and other factors. *Neuropsychopharmacology* **45**, 104-120.
- 596 [70] Verghese J, Wang C, Lipton RB, Holtzer R (2013) Motoric cognitive risk syndrome and
597 the risk of dementia. *J Gerontol A Biol Sci Med Sci* **68**, 412-418.
- 598 [71] Guan DX, Chen H-Y, Camicioli R, Montero-Odasso M, Smith EE, Ismail Z (2022) Dual-
599 task gait and mild behavioral impairment: The interface between non-cognitive dementia
600 markers. *Experimental Gerontology* **162**, 111743.
- 601 [72] Brown J, Makker HK (2020) An approach to excessive daytime sleepiness in adults. *BMJ*
602 **368**.
- 603 [73] Boeve BF (2019) REM sleep behavior disorder associated with dementia with Lewy
604 bodies. *Rapid-eye-movement sleep behavior disorder*, 67-76.
- 605 [74] Hu S, Patten S, Charlton A, Fischer K, Fick G, Smith EE, Ismail Z (2023) Validating the
606 Mild Behavioral Impairment Checklist in a Cognitive Clinic: Comparisons With the
607 Neuropsychiatric Inventory Questionnaire. *J Geriatr Psychiatry Neurol* **36**, 107-120.
- 608 [75] Livingston G, Huntley J, Sommerlad A, Ames D, Ballard C, Banerjee S, Brayne C, Burns
609 A, Cohen-Mansfield J, Cooper C (2020) Dementia prevention, intervention, and care:
610 2020 report of the Lancet Commission. *The Lancet* **396**, 413-446.
- 611

612 **TABLES**
613

Table 1. Participant characteristics				
	Analysis 1*	Analysis 2*	Analysis 3*	Analysis 4*
n	11277	10535	1567	11921
First-Visit Age (Years)	72.7 (8.8), 50.0-104.0	72.7 (8.8), 50.0-101.0	72.2 (8.8), 50.0-101	72.9 (8.8), 50.0-104
Females	6658 (59.0)	6412 (60.9)	785 (50.1)	6991 (58.6)
Education (Years)	15.7 (3.1), 0-29.0	15.7 (3.2), 0-29.0	15.4 (3.3), 0-30.0	15.7 (3.1), 0-29.0
Cognitive Status				
CN	8579 (76.1)	8375 (79.5)	797 (50.9)	8628 (72.4)
MCI	2698 (23.9)	2160 (20.5)	770 (49.1)	3293 (27.6)
Race: White	8721 (77.3)	8063 (76.5)	1260 (80.4)	9269 (77.8)
Predictor Characteristics				
MBI	1562 (13.9)	-	707 (45.1)	1902 (16.0)
No MBI	9715 (86.1)	-	860 (54.9)	10019 (84.0)
SD	-	820 (7.8)	-	-
No SD	-	9715 (92.2)	-	-

Note. *Analysis 1: Baseline MBI and incident sleep disturbance, Analysis 2: Baseline sleep disturbance and incident MBI, Analysis 3: Baseline MBI and incident dementia within those with sleep disturbance. Analysis 4: baseline MBI and incident dementia in those without sleep disturbance. All values for continuous variables are shown in mean (SD), range. Values were rounded to one decimal place where appropriate. Categorical variables are shown as n (%). Participants missing data in any of the variables were excluded from descriptive statistical analysis.

Abbreviations: MBI, mild behavioral impairment; CN, cognitively normal; MCI, mild cognitive impairment; SD, sleep disturbance

614
615
616
617
618
619
620
621
622
623
624
625
626

Table 2. Participant Characteristics for Analyses 1, 2, 3 and 4

Analysis 1	Total (n=11277)	MBI (n=1562)	No MBI (n=9715)	p
n	11277	1562	9715	
First-Visit Age (Years)	72.7 (8.8), 50-104	72.8 (8.5), 50-104	72.7 (8.8), 50-101	0.501 ^w
Females	6658 (59.0)	705 (45.1)	5953 (61.3)	<0.001 ^c
Education (Years)	15.7 (3.1), 0-29	15.7 (3.2), 1-29	15.7 (3.0), 0-29	0.869 ^w
Cognitive Diagnosis				<0.001 ^c
	CN	8579 (76.1)	768 (49.2)	7811 (80.4)
	MCI	2698 (23.9)	794 (50.8)	1904 (19.6)
Race: White*	8721 (77.3)	1301 (83.3)	7420 (76.4)	<0.001 ^c
Analysis 2	Total (n=10535)	SD Present (n=820)	SD Absent (n=9715)	p
First-Visit Age (Years)	72.7 (8.8), 50-101	72.2 (8.8), 50-96	72.7 (8.8), 50-101	0.106 ^w
Females	6412 (60.9)	459 (56.0)	5953 (61.3)	0.003 ^c
Education (Years)	15.7 (3.2), 0-29	15.5 (3.2), 0-25	15.7 (3.0), 0-29	0.054 ^w
Cognitive Diagnosis				<0.001 ^c
	CN	8375 (79.5)	564 (68.8)	7811 (80.4)
	MCI	2160 (20.5)	256 (31.2)	1904 (19.6)
Race: White*	8063 (76.5)	643 (78.4)	7420 (76.4)	0.115 ^c
Analysis 3	Total (n=1567)	MBI Present (n=707)	MBI Absent (n=860)	p
First-Visit Age (Years)	72.2 (8.8), 50-101	72.2 (8.8), 50-101	72.3 (8.8), 50-96	0.877 ^w
Females	785 (50.1)	307 (43.4)	478 (55.6)	<0.001 ^c
Education (Years)	15.4 (3.3), 0-30	15.1 (3.5), 0-30	15.6 (3.2), 0-25	0.017 ^w
Cognitive Diagnosis				<0.001 ^c
	CN	797 (50.9)	233 (33.0)	564 (65.6)
	MCI	770 (49.1)	474 (67.0)	296 (34.4)
Race: White*	1260 (80.4)	581 (82.2)	679 (79.0)	0.008 ^c
Analysis 4	Total (n=11921)	MBI Present (n=1902)	MBI Absent (n=10019)	p
First-Visit Age (Years)	72.9 (8.8), 50-104	73.1 (8.6), 50-104	72.8 (8.8), 50-101	0.089 ^w
Females	6991 (58.6)	871 (45.8)	6120 (61.1)	<0.001 ^c
Education (Years)	15.7 (3.1), 0-29	15.6 (3.2), 1-29	15.7 (3.0), 0-29	0.218 ^w
Cognitive Diagnosis				<0.001 ^c
	CN	8628 (72.4)	783 (41.2)	7845 (78.3)
	MCI	3293 (27.6)	1119 (58.8)	2174 (21.7)
Race: White**	9269 (77.8)	1590 (83.6)	7679 (76.6)	<0.001 ^c

Note: All values for continuous variables are shown in mean (standard deviation). Values were rounded to one decimal place where appropriate, except for p-values which were rounded to three decimal places. Categorical variables are shown as n (%). Participants missing data for any of the variables were excluded from descriptive statistical analysis. Analysis (1): baseline mild behavioral impairment (MBI) and incident sleep disturbance (SD); (2) baseline SD and incident MBI; (3) baseline MBI in those with SD and incident dementia; (4) baseline MBI in those without SD and incident dementia

*Non-white races: Black, First Nations American/Alaskan, Native Hawaiian/Other Pacific Islander, Asian or Other.
w – Wilcoxon Rank Sum (Mann-Whitney) Test; c – Chi-Squared Test

627

Table 3. Multivariable Cox regression models for the association between baseline MBI or sleep disturbance with incident sleep disturbance, MBI or dementia using MBI, SD and cognitive diagnosis as time-dependent variables

Exposure Variable	Outcome Variable	HR	95% CI	<i>p</i>
MBI	Sleep Disturbance	3.04	2.77-3.33	<0.001
Sleep disturbance	MBI	1.52	1.28-1.80	<0.001
MBI status in those with sleep disturbance	Dementia	2.20	1.91-2.53	<0.001
MBI status in those without sleep disturbance	Dementia	1.92	1.81-2.03	<0.001

Note. Associations were tested using multivariable Cox regression models, adjusted for first-visit age, sex, years of education, cognitive diagnosis (CN/MCI), and race. Both MBI status and sleep disturbance were dichotomized. The false rate discovery method was used to adjust *p* values for multiple comparisons.

Abbreviations: MBI, mild behavioral impairment; CN, cognitively normal; MCI, mild cognitive impairment; HR, hazard ratio; CI, confidence interval

628

629

630

631

632

633

634

635

636

637

638

639

640

641

642

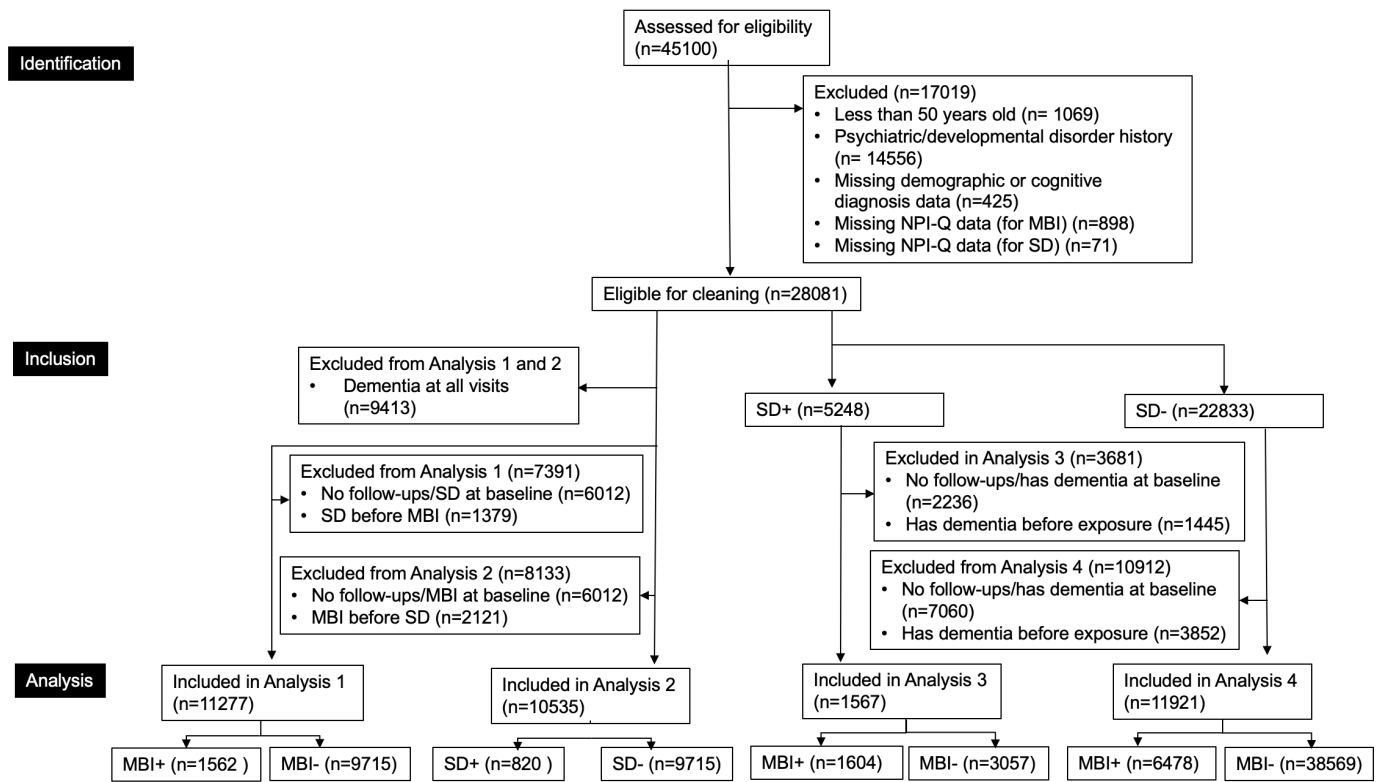
643

644

645

646

647 **FIGURES**



648 **Figure 1. Participant Flow Diagram.** Analysis 1 examined whether baseline MBI was
649 associated with incident sleep disturbance. Analysis 2 examined whether baseline sleep
650 disturbance was associated with incident MBI. Analysis 3 explored whether baseline MBI was
651 associated with dementia in those with sleep disturbance. Analysis 4 explored whether baseline
652 MBI was associated with dementia in those without sleep disturbance. Abbreviations: NPI-Q,
653 Neuropsychiatric Inventory Questionnaire; MBI, mild behavioral impairment; SD, sleep
654 disturbance
655
656

657

658

659

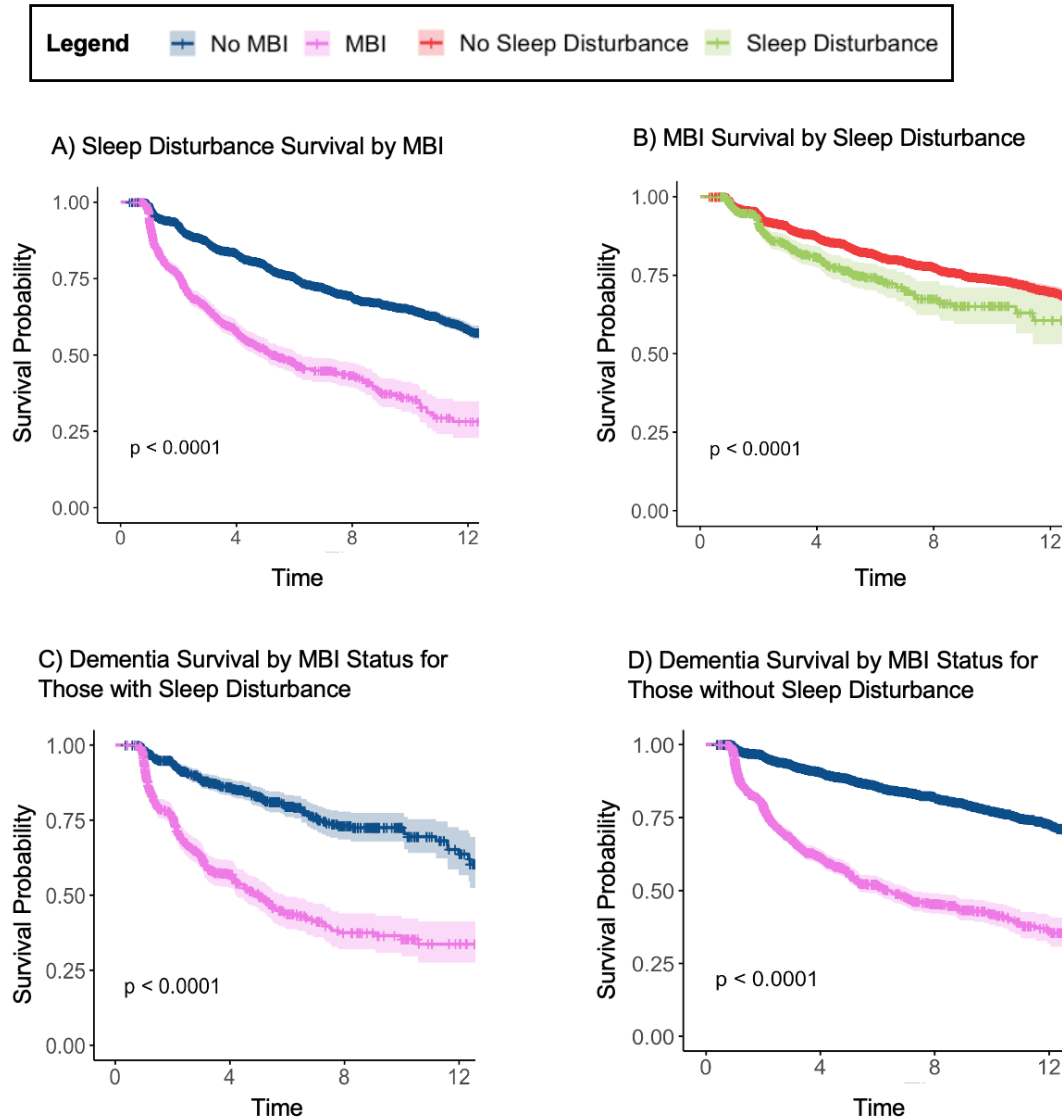
660

661

662

663

664



665
666 **Figure 2. Kaplan-Meier Survival Curves** up to 12 years for (A) sleep disturbance-free survival
667 based on MBI status ($n = 11277$); (B) MBI-free survival based on sleep disturbance ($n = 10535$);
668 (C) dementia-free survival based MBI with concurrent sleep disturbance ($n = 1567$); (D)
669 dementia-free survival based MBI without concurrent sleep disturbance ($n = 11921$).
670

671