

1 **Acute pharmacodynamic responses to sitagliptin:**
2 **Drug-induced increase in early insulin secretion in oral glucose tolerance test.**

3
4 Amber L. Beitelshes PharmD¹ | Elizabeth A. Streeten MD¹ |
5 Zhinous Shahidzadeh Yazdi MD¹ | Hilary B. Whitlatch MD¹ | Braxton D. Mitchell PhD¹ |
6 Alan R. Shuldiner MD¹ | May E. Montasser PhD¹ | Simeon I. Taylor MD¹

7
8 ¹ Department of Medicine, Division of Endocrinology, Diabetes, and Nutrition, University of
9 Maryland School of Medicine, Baltimore, MD 21201, USA

10 Correspondence

11 Amber L. Beitelshes, Pharm D, MPH, Department of Medicine, University of Maryland School
12 of Medicine, Baltimore, MD 21201, USA. Email: abeitels@som.umaryland.edu

13 OR

14 Simeon I. Taylor, MD, PhD, Department of Medicine, University of Maryland School of Medicine,
15 Baltimore, MD 21201, USA. Email: staylor2@som.umaryland.edu

16 **Funding information:** American Diabetes Association (1-16-ICTS-112) and National Institute of
17 Diabetes and Digestive and Kidney Disease (P30DK072488, P30DK079637, T32DK098107)

18 **Trial registration:** NCT05762744 (clinicaltrials.gov)

19 **Study review and approval:** Institutional Review Board of the University of Maryland Baltimore

20

21 **Abstract**

22 Aim: DPP4 inhibitors are widely prescribed as treatments for type 2 diabetes. Because drug
23 responses vary among individuals, we initiated investigations to identify genetic variants
24 associated with the magnitude of drug responses.

25 Methods: Sitagliptin (100 mg) was administered to 47 healthy volunteers. Several endpoints
26 were measured to assess clinically relevant responses – including the effect of sitagliptin on
27 glucose and insulin levels during an oral glucose tolerance test (OGTT).

28 Results: This pilot study confirmed that sitagliptin (100 mg) decreased the area under the curve
29 for glucose during an OGTT ($p=0.0003$). Furthermore, sitagliptin promoted insulin secretion
30 during the early portion of the OGTT as reflected by an increase in the ratio of plasma insulin at
31 30 min divided by plasma insulin at 60 min (T30:T60) from 0.87 ± 0.05 to 1.62 ± 0.36 mU/L
32 ($p=0.04$). The magnitude of sitagliptin's effect on insulin secretion (as judged by the increase in
33 the T30:T60 ratio for insulin) was correlated with the magnitude of sitagliptin-induced increase in
34 the area under the curve for intact plasma GLP1 levels during the first hour of the OGTT. This
35 study confirmed previously reported sex differences in glucose and insulin levels during an
36 OGTT. Specifically, females exhibited higher levels of glucose and insulin at the 90-180 min time
37 points. However, we did not detect significant sex-associated differences in the magnitude of
38 sitagliptin-induced changes in T30:T60 ratios for either glucose or insulin.

39 Conclusions: T30:T60 ratios for insulin and glucose during an OGTT provide useful indices to
40 assess pharmacodynamic responses to DPP4 inhibitors.

41

42 1 | INTRODUCTION

43 The past two decades have been a golden age for discovery and development of diabetes
44 drugs – including three classes of innovative drugs: dipeptidylpeptidase-4 (DPP4) inhibitors,
45 GLP1 receptor agonists, and sodium-glucose cotransporter-2 (SGLT2) inhibitors ¹. There are at
46 least four approved DPP4 inhibitors: sitagliptin, saxagliptin, vildagliptin, and linagliptin ¹.
47 Sitagliptin was the first drug in the class to be approved and remains the most widely prescribed
48 dipeptidylpeptidase-4 (DPP4) inhibitor. According to FDA-approved prescribing information,
49 sitagliptin decreases mean HbA1c by 0.7% when administered to type 2 diabetic patients who
50 are inadequately controlled with metformin. However, there is substantial inter-individual
51 variation in the magnitude of HbA1c-lowering. While some patients experience very modest
52 HbA1c-lowering, others experience HbA1c-lowering exceeding 1.5% ².

53 DPP4 inhibitors are not the most efficacious class of diabetes drugs with respect to HbA1c-
54 lowering ^{1,3-5}, but they have the most favorable profiles with respect to safety and tolerability.
55 Unlike GLP1 receptor agonists ¹, they do not commonly cause nausea or vomiting. Unlike
56 SGLT2 inhibitors ⁶, they are not associated with an increased risks of genital infections or
57 ketoacidosis. Alogliptin is already available as a generic drug. When other DPP4 inhibitors
58 experience loss of marketing exclusivity in the relatively near future, DPP4 inhibitors will
59 represent an affordable oral antidiabetic drug that can be prescribed early in the course of type
60 2 diabetes to patients who are not adequately controlled on metformin. In this context, it would
61 be desirable to be able to predict which patients are likely to experience above-average
62 glycemic responses to DPP4 inhibitors. For example, if a patient experiences above-average
63 HbA1c-lowering (>0.7%) in response to a DPP4 inhibitor, that degree of glycemic improvement
64 would provide substantial clinical benefit to the patient. According to GoodRx, a one-month
65 supply of sitagliptin (100 mg) costs ~\$550 in the US whereas a one-month supply of generic
66 alogliptin (25 mg) is available for ~\$150 (i.e., ~70% lower price). The price of generic DPP4

67 inhibitors is projected to fall to levels comparable to generic sulfonylureas or metformin as a
68 result of competition after sitagliptin and other DPP4 inhibitors experience loss of marketing
69 exclusivity. In light of the high degree of safety and tolerability, generic DPP4 inhibitors have
70 potential to displace generic sulfonylureas and generic pioglitazone in many patients'
71 therapeutic regimens – especially if it becomes possible to identify individual patients likely to
72 experience above-average HbA1c-lowering.

73 This manuscript describes an approach to assess the magnitude of an individual's acute
74 pharmacodynamic response to sitagliptin by analyzing data from an oral glucose tolerance test
75 (OGTT). Whereas sitagliptin does not exert a significant effect on the area under the curve
76 (AUC) for glucose-stimulated insulin secretion, sitagliptin administration shifts the time course of
77 insulin secretion to earlier times. Similarly, sitagliptin significantly alters the time course for
78 glucose levels during an OGTT. These data provide validation for a promising approach to
79 conduct a pharmacogenomic study to identify genetic variants that are associated with
80 pharmacodynamic responses to sitagliptin.

81

82 2 | METHODS

83 2.1 | Study population: recruitment and screening

84 The Old Order Amish population of Lancaster County, PA emigrated from Central Europe in the
85 early 1700's. University of Maryland School of Medicine researchers have been studying
86 genetic determinants of cardiometabolic health in this population since 1993. To date, ~10,000
87 Amish adults participated in one or more studies as part of the University of Maryland Amish
88 Research Program ([http://www.medschool.umaryland.edu/endocrinology/Amish-Research-
89 Program/](http://www.medschool.umaryland.edu/endocrinology/Amish-Research-Program/)). The present study was a sub-study of a pilot study in healthy volunteers in which we
90 investigated pharmacodynamic responses to exenatide (NCT05071898 at clinicaltrials.gov)⁷. All
91 procedures were reviewed and approved by the University of Maryland Baltimore Institutional
92 Review Board.

93 A research nurse, accompanied by a liaison (a member of the Amish community), made home
94 visits to invite individuals to participate in the study. If individuals expressed interest, the study
95 was explained in detail; potential participants were invited to sign an informed consent form.
96 Thereafter, the research nurse obtained a medical history; measured height, weight, and blood
97 pressure; and obtained blood samples for screening laboratory tests (hematocrit, fasting plasma
98 glucose, serum creatinine, serum AST, serum ALT, serum TSH, and HbA1c).

99 2.2 | Study design: overview

100 Participants in the parent clinical trial with exenatide (NCT05762744) were offered the
101 opportunity to participate in this clinical trial investigating pharmacodynamic responses to
102 sitagliptin. This sub-study was designed as a crossover study in which healthy individuals
103 underwent a control oral glucose tolerance test (OGTT). After a washout period of at least one
104 week, participants underwent a second OGTT. Two hours prior to the second OGTT,
105 participants received sitagliptin (100 mg, p.o.). On the days of the OGTTs, participants were

106 transported to the Amish Research Clinic, in the fasting state, and their heights, weights, and
107 vital signs were measured. Participants were weighed in a standardized manner while wearing a
108 gown. Reproductive age women underwent a pregnancy test to exclude women who were
109 pregnant. Fasting blood tests were obtained to measure fasting plasma glucose and lipid profile.
110 OGTTs were conducted as described previously⁸. Two hours after receiving the intervention
111 [either placebo or sitagliptin (100 mg, p.o.)], participants received oral glucose (75 g). Blood
112 samples were obtained at 7 time points: 0, 30, 60, 90, 120, 150, and 180 minutes.

113 2.3 | Eligibility criteria

114 To be eligible to participate in the clinical trial, individuals were required to be of Amish descent,
115 at least 18 years old, and have BMI between 18-40 kg/m². Exclusion criteria are summarized in
116 the Supplementary Appendix.

117 2.4 | Clinical chemistry

118 Processing of blood samples and laboratory methods are summarized in the Supplementary
119 Appendix.

120 2.5 | Data and statistical analyses

121 We established two primary end points: sitagliptin's effect on area under the curve (AUC) for
122 levels of (a) insulin and (b) glucose during the course of a 3-hour OGTT. We also established
123 several secondary endpoints: sitagliptin's effect on AUC for intact GLP1, total GIP, and
124 glucagon during the course of the first hour of an OGTT. After having reviewed the OGTT data,
125 we established six exploratory end-points:

- 126 • *T30:T60 ratio for insulin*: the ratio of the insulin level at 30 min divided by the insulin level at
127 60 min in both the (a) control OGTT and (b) sitagliptin OGTT.

- 128 • T30:T60 ratio for glucose: the ratio of the glucose level at 30 min divided by the glucose
129 level at 60 min in both the (c) control OGTT and (d) sitagliptin OGTT.
- 130 • Drug effects: (e) the ratio of the T30:T60 ratio for insulin in the sitagliptin OGTT divided by
131 the T30:T60 ratio for insulin in the control OGTT; and (f) the ratio of the T30:T60 ratio for
132 glucose in the sitagliptin OGTT divided by the T30:T60 ratio for glucose in the control OGTT.
- 133 Statistical significance was assessed using two-tailed Student's t-tests for paired data. Although
134 a p-value of $p < 0.05$ was defined as the threshold for nominal statistical significance, a more
135 stringent threshold (e.g., $p < 0.001$) may be appropriate to account for multiple comparisons.

136

137 3 | Results

138 3.1 | Disposition and adverse events

139 Disposition of participants and adverse events are summarized in Fig. S1. Fifty-nine individuals
140 were enrolled in this clinical trial between June, 2016 - November, 2018. Forty-seven
141 participants completed oral glucose tolerance tests (OGTT). Research participants' baseline
142 characteristics are summarized in Table S1.

143 3.2 | Oral glucose tolerance tests: impact of sitagliptin

144 Sitagliptin decreased the area under the curve (AUC) for glucose by 9% ($p=0.0003$) but did not
145 significantly affect the AUC for insulin (Fig. 1). Nevertheless, sitagliptin appeared to change the
146 shapes of the curves corresponding to time courses for both glucose and insulin – moving the
147 peaks of the curves for both mean glucose and mean insulin from 60 min (control) to 30 min
148 (post-sitagliptin). Accordingly, we calculated ratios of the levels of glucose or insulin at 30 min
149 divided by the corresponding levels at 60 min (T30:T60) (Fig. 2AB). Sitagliptin increased the
150 mean T30:T60 ratio for glucose from 0.93 ± 0.02 to 1.11 ± 0.04 ($p=0.0005$) and the mean T30:T60
151 ratio for insulin from 0.87 ± 0.05 to 1.62 ± 0.04 ($p=0.04$). We hypothesized that drug-induced
152 increases in early insulin secretion at 30 min drive the subsequent decrease in glucose at 60
153 min. This hypothesis is supported by the observation that individual values of the T30:T60 ratio
154 for glucose were correlated with individual values of the T30:T60 ratio for insulin ($r=0.70$,
155 $p<0.0001$) (Fig. 2C). We observed substantial inter-individual variation in the magnitudes of
156 sitagliptin's effect on levels of insulin and glucose (Fig. S2). Approximately 30% of participants
157 experienced a numerical decrease in the value of the T30:T60 ratio for insulin after receiving
158 sitagliptin. We hypothesize that these small numerical decreases were likely explained by
159 experimental variation rather than a true “paradoxical” effect of sitagliptin. Similarly,
160 approximately 30% of participants experienced a numerical decrease in the value of the

161 T30:T60 ratio for glucose after receiving sitagliptin. Among the individuals in whom sitagliptin
162 was accompanied by increased T30:T60 ratios, the maximum drug effects were ~3-fold for
163 glucose and ~20-fold for insulin.

164 3.3 | Biological variable affecting responses during OGTTs

165 Sex. Mean plasma levels of both glucose and insulin were higher in females than in males
166 during the later time points in OGTTs (90-180 min) (Fig. 3). This sex difference was observed in
167 both control OGTTs and sitagliptin OGTTs. Sitagliptin significantly increased mean T30:T60
168 ratios for glucose in both males and females ($p=0.03$). Sitagliptin significantly increased the
169 mean T30:T60 ratio for insulin in males ($p=0.01$). In addition, the numerical value for the mean
170 T30:T60 ratio for insulin was increased by sitagliptin in females ($p=0.11$). We did not observe
171 significant differences between the magnitude of the drug effects on mean T30:T60 ratios for
172 either glucose or insulin (Table S2).

173 Age. The variance in age accounted for only 3% of the variation in T30:T60 ratios for glucose in
174 control OGTTs and 14% of the variance in T30:T60 ratios for glucose in sitagliptin OGTTs (Fig.
175 S3). The variance in age accounted for only 4% of the variation in T30:T60 ratios for insulin in
176 control OGTTs and 12% of the variance in T30:T60 ratios for insulin in sitagliptin OGTTs (Fig.
177 S3).

178 BMI. The variance in BMI accounted for only 4% of the variation in T30:T60 ratios for glucose in
179 control OGTTs and 17% of the variance in T30:T60 ratios for glucose in sitagliptin OGTTs (Fig.
180 S4). The variance in BMI accounted for only 0.04% of the variation in T30:T60 ratios for insulin
181 in control OGTTs and 0.5% of the variance in T30:T60 ratios for insulin in sitagliptin OGTTs (Fig.
182 S4).

183 3.4 | Impact of sitagliptin on secretion of GLP1, GIP, and glucagon

184 Sitagliptin increased mean levels of intact GLP1 at all time points (0, 30, and 60 min)
185 and induced a 2.3-fold increase in the mean AUC for intact GLP1 from 7.0 ± 0.7 to
186 15.8 ± 1.5 pmol-hr/L ($p=3 \times 10^{-8}$) (Fig. 4A). Sitagliptin increased the mean AUC for
187 glucagon by 66% from 3.74 ± 0.27 to 6.21 ± 0.46 ($p=7 \times 10^{-9}$) (Fig. 4C). The increase in
188 mean AUC for glucagon is primarily a reflection of an increase in mean glucagon levels
189 at time zero. Sitagliptin did not affect mean total GIP levels at time zero but decreased
190 mean AUC for total GIP by 24% (Fig. 4B). We did not conduct assays that specifically
191 measured levels of intact GIP.

192 We hypothesized that drug-induced increases in GLP1 secretion contributed to the
193 drug-induced increase in insulin secretion during the OGTT. This hypothesis is
194 supported by the observation that individual values of the drug-effect on insulin levels
195 were correlated with individual values of the drug effect on GLP1 levels ($r=0.29$, $p=0.04$)
196 (Fig. 5).

197 As this clinical trial was a sub-study within our pilot clinical trial of pharmacodynamic
198 responses to exenatide ⁷, we inquired whether responses to sitagliptin were correlated
199 with responses to exenatide. Forty-five participants completed both frequently sampled
200 intravenous glucose tolerance tests in our exenatide clinical trial and oral glucose
201 tolerance tests in our sitagliptin clinical trial. The variance in exenatide's effect to
202 increase first phase insulin secretion accounted for only 0.7% of the variance in
203 sitagliptin's effect to increase T30:T60 for insulin ($r=0.084$) (Fig. S5). The variance in
204 exenatide's effect to accelerate the rate of glucose disappearance accounted for only
205 0.007% of the variance in sitagliptin's effect to increase T30:T60 for insulin ($r=0.0084$)
206 (Fig. S5).

207

208 4 | Discussion

209 Our clinical trial demonstrated that sitagliptin (100 mg) decreased mean AUC for glucose by 9%
210 when administered to healthy volunteers two hours prior to initiation of an OGTT (Fig. 1).

211 Similarly, Herman et al. ⁹ reported that sitagliptin (200 mg) decreased mean weighted averages
212 for *incremental* glucose by 18% when administered to patients with type 2 diabetes two hours
213 before an OGTT. Whereas Herman et al. ⁹ reported that sitagliptin (200 mg) increased mean

214 weighted averages for insulin and C-peptide by ~20% in patients with type 2 diabetes, our
215 clinical trial did not detect a significant effect of sitagliptin (100 mg) on mean AUC for insulin in
216 healthy volunteers. Both Herman et al. ⁹ and we demonstrated that sitagliptin induced an

217 approximately twofold increase in levels of intact GLP1. Herman et al. ⁹ demonstrated that

218 sitagliptin increased levels of active GIP while inducing a modest decrease in total levels of GIP.

219 Although we did not measure levels of intact GIP, we confirmed their observation that sitagliptin

220 decreased mean AUC for GIP by 24%. As hypothesized by Herman et al., it seems likely that

221 sitagliptin-induced increases in intact GLP1 and/or intact GIP mediate the effect of drug to

222 improve glucose tolerance. Whereas Herman et al. ⁹ reported a 14% decrease in glucagon

223 levels, we observed a highly significant 66% increase in mean AUC for glucagon in response to

224 sitagliptin (100 mg). Although it is unclear how to explain the difference between data in healthy

225 volunteers versus patients with type 2 diabetes, it is noteworthy that diabetes is associated with

226 dysregulation of glucagon secretion ¹⁰⁻¹². Mathematical modeling of meal tolerance tests

227 demonstrated that vildagliptin increased insulin secretion (primarily in response to breakfast and

228 lunch rather than dinner) without altering glucose sensitivity of the β -cells ^{13,14}. Alsalim et al. ¹⁵

229 reached similar conclusions when mathematical modeling was applied to analysis of the effect

230 of sitagliptin on meal tolerance tests conducted either in healthy volunteers or patients with type

231 2 diabetes. Just as we observed that sitagliptin induced a small effect to decrease mean AUC

232 for glucose ($p=0.0003$) without altering mean AUC for insulin in healthy volunteers, Alsalim et al.
233 similarly observed that sitagliptin decreased mean AUC for glucose by 14% in both healthy
234 volunteers and patients with type 2 diabetes without inducing a statistically significant effect on
235 mean AUCs for insulin or C-peptide.

236 How can one explain the apparent paradox that sitagliptin improved glucose tolerance (i.e.,
237 significantly decreased the mean AUC for glucose) without increasing mean AUC for insulin?
238 Although sitagliptin (100 mg) did not alter mean glucose levels at 0 or 30 min, sitagliptin
239 decreased glucose levels at later time points in the OGTT – most notably at 60 and 90 min.
240 Moreover, although sitagliptin increased mean insulin levels at 30 min, mean insulin levels at 60
241 min were actually lower for the sitagliptin OGTTs than for the control OGTTs. Mean AUCs were
242 unchanged because the lower levels at 60 min are balanced out by higher levels at 30 min. We
243 hypothesize that the increase in early insulin secretion (i.e., at 30 min) may drive the
244 subsequent decrease in mean glucose levels (e.g., at 60 and 90 min). This could be viewed as
245 the mirror image of the natural history of type 2 diabetes, in which early insulin secretion (first
246 phase) is selectively lost early in the natural history of the disease. In that context, a selective
247 increase in early insulin secretion addresses the pathophysiology of type 2 diabetes. Based on
248 our observations, we hypothesized that ratios of insulin levels at 30 min divided by insulin levels
249 at 60 min would provide a useful index of the shape of the curves for the time course of insulin
250 secretion. Because sitagliptin increased mean insulin levels at 30 min and decreased mean
251 insulin levels at 60 min (Fig. 1B), sitagliptin administration induced a 1.9-fold increase ($p=0.04$)
252 in the mean T30:T60 ratio for insulin (Fig. 2B). Similarly, because sitagliptin decreased mean
253 glucose levels at 60 min (Fig. 1A), sitagliptin induced a 19% increase ($p=0.0005$) in the T30:T60
254 ratio for glucose (Fig. 2A).

255 The principal objective of our study was to validate pharmacodynamic endpoints for a future
256 pharmacogenomic study of individual responses to a single administration of sitagliptin. Our

257 observations suggest that T30:T60 ratios for glucose and insulin would provide sensitive
258 endpoints for such a pharmacogenomic study. Whereas administration of sitagliptin did not
259 change the AUC for insulin in an OGTT, sitagliptin elicited a substantial (90%) increase in the
260 mean T30:T60 ratio for insulin. Furthermore, we observed substantial inter-individual variation in
261 the magnitude of sitagliptin's effect on T30:T60 ratios – ranging from little or no effect on either
262 T30:T60 ratio to a 175% increase in the T30:T60 ratio for glucose and a >10-fold increase in the
263 T30:T60 ratio for insulin (Fig. 3). Furthermore, the variance in the sitagliptin-induced increase in
264 the T30:T60 ratio for insulin accounted for ~50% of the variance in the sitagliptin-induced
265 increase in the T30:T60 ratio for glucose (Fig. 2) – suggesting that T30:T60 ratios provide
266 physiologically relevant indices of insulin secretion and insulin action. We hypothesize that inter-
267 individual variation in insulin sensitivity and/or glucose effectiveness may also contribute to the
268 unexplained variance in the T30:T60 ratio for glucose. Interestingly, we confirmed the previously
269 reported sex-associated difference in responses during an OGTT¹⁶, which was attributed to
270 slower absorption of orally administered glucose in females as compared to males. Thus, it will
271 be important to adjust for sex as a covariate when conducting a GWAS searching for genetic
272 variants associated with the response to sitagliptin.

273 Type 2 diabetes is a progressive disease – with the impairment in beta cell insulin secretion
274 becoming more severe over time^{3,17}. For example, although first line therapy with metformin
275 may provide acceptable metabolic control early in the course of the disease, it is often
276 necessary to add one or more drugs to restore acceptable metabolic control^{1,3,17,18}. Physicians
277 have quite a number of options when selecting a second drug to prescribe for patients who are
278 inadequately controlled on metformin monotherapy – including, DPP4 inhibitors, SGLT2
279 inhibitors, GLP1R agonists, sulfonylureas, and pioglitazone among others^{1,3,18,19}.
280 Pharmacogenomics offers potential to predict each individual's response to specific diabetes
281 drugs – thereby guiding the choice of optimal therapy for each patient. On average, DPP4

282 inhibitors provide slightly less mean HbA1c-lowering than several other classes of diabetes
283 drugs^{1,3,4}. However, if a physician could predict that an individual patient would experience
284 above average HbA1c-lowering in response to a DPP4 inhibitor, this would increase the
285 attractiveness of the clinical profile for a DPP4 inhibitor for that patient. The impact of a
286 precision therapeutics approach would be magnified if it were possible to apply genetic
287 information to compare the predicted efficacies of several drug classes for each individual
288 patient. This logic provides a strong rationale for conducting pharmacogenomic research in the
289 most important classes of diabetes drugs – including, DPP4 inhibitors, SGLT2 inhibitors, and
290 GLP1R agonists^{1,18,20}. In this context, it is noteworthy that many of our research participants in
291 this clinical trial underwent studies to assess pharmacodynamic responses to both sitagliptin
292 and exenatide. Interestingly, the variance in responses to exenatide accounted for <1% of the
293 variance in responses to sitagliptin (Fig. S2). This observation suggests that some patients
294 might experience above average responses to a DPP4 inhibitor but below average responses to
295 a GLP1R agonists. Although a substantial investment will be required to fully realize the
296 potential of pharmacogenomics and precision therapeutics, such an approach has the potential
297 to transform the approach to designing therapeutic regimens for patients with type 2 diabetes.
298

299 **AUTHORS' CONTRIBUTIONS**

300 Conception of the clinical trial and PIs for grants: ALB, SIT

301 Acquisition and analysis of data: ALB, H-RC, MEM, EAS, SIT, HBW, ZSY

302 Establishment of Old Order Amish genotype database: BDM, ARS

303 Preparation of first draft of manuscript: SIT

304 Revising and approving final version of manuscript: all authors

305 Accountability for all aspects of work: ALB and SIT

306

307

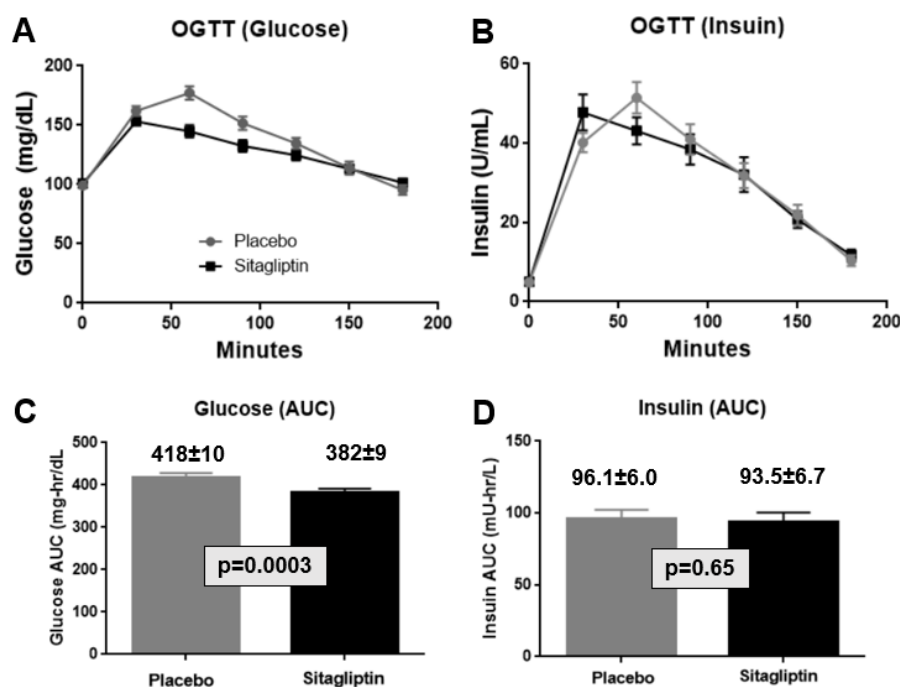
308 **Competing Interests**

309 SIT serves as a consultant for Ionis Pharmaceuticals and receives an inventor's share of
310 royalties from NIDDK for metreleptin as a treatment for generalized lipodystrophy. ARS is an
311 employee of Regeneron Genetics Center. BDM and MEM receive grant support from
312 Regeneron Genetics Center. BDM, MEM, EAS, and HBW have received partial salary support
313 from funds provided by RGC. ALB, ZSY, and HRC declare no competing interests.

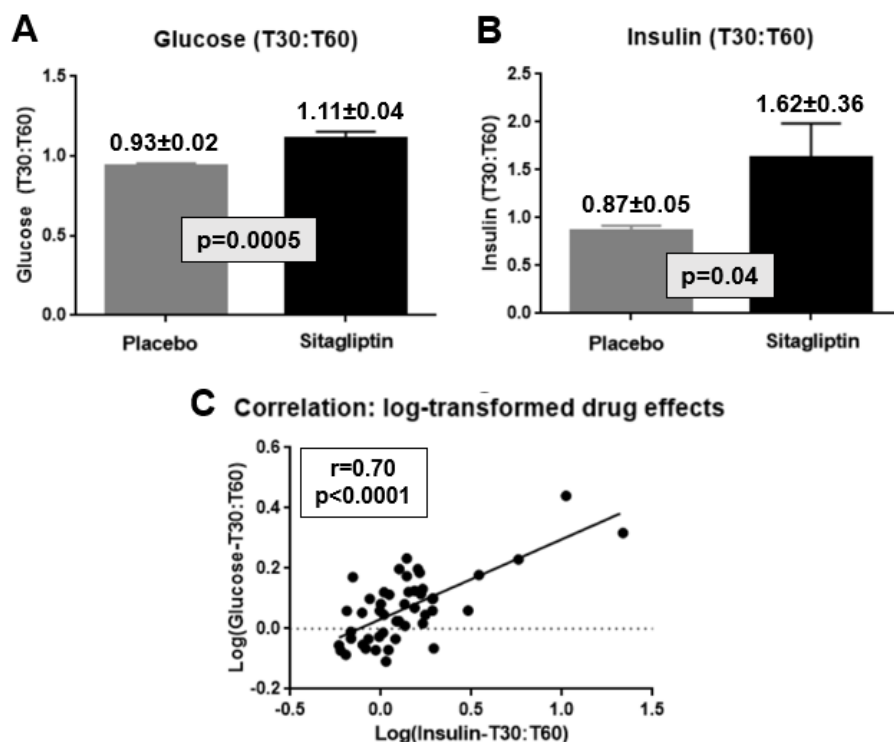
314 FIGURE 1. Sitagliptin decreases area under the curve (AUC) for glucose levels during an oral
315 glucose tolerance test (OGTT). Forty-seven participants underwent a control 3-hour OGTT (75
316 grams of glucose) (depicted by gray circles in panels A and B and gray bars in panels C and D).
317 A second OGTT was conducted one week later. Sitagliptin (100 mg, p.o.) was administered two
318 hours prior to initiating the second 3-hour OGTT (depicted by black squares in panels A and B
319 and black bars in panels C and D). Data on glucose levels are presented in panels A and C.
320 Data on insulin levels are presented in panels B and D. Data are expressed as means \pm SEM.
321 p-values (panels C and D) were calculated using a two-tailed Student's t-test for paired data.

322

323



331 FIGURE 2. Sitagliptin increases early insulin secretion and improves glucose tolerance during
332 an OGTT. Data from FIG. 1 were reanalyzed by calculating T30:T60 ratios by dividing the
333 concentrations of glucose (panel A) and insulin (panel B) at 30 min by the corresponding
334 concentrations at 60 minutes. Gray bars correspond to data from the control OGTTs (panels A
335 and B); black bars correspond to data from the sitagliptin OGTTs (panels A and B). Data are
336 expressed as means \pm SEM. p-values (panels A and B) were calculated using a two-tailed
337 Student's t-test for paired data. Panel C depicts a graph of individual values of the logarithms of
338 the T30:T60 ratio for glucose as a function of the logarithms of corresponding T30:T60 ratios for
339 insulin.



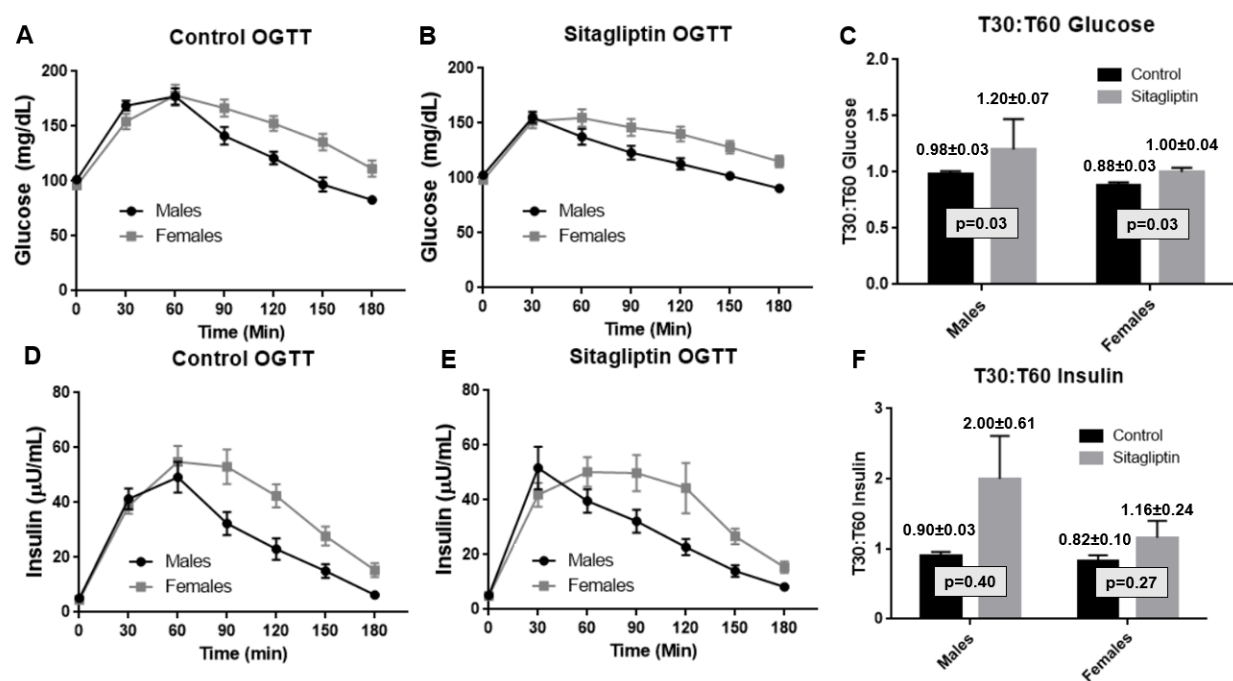
340

341

342

343

344 FIGURE 3. Sex as a biological variable: sex-differences in responses to oral glucose. Data from
 345 Figs. 1A and 1B were re-analyzed after stratification according to the self-identified sex of the
 346 participant. Data on glucose levels are plotted in Panel A (control OGTT) and Panel B
 347 (Sitagliptin OGTT). Data on insulin levels are plotted in Panel D (Control OGTT) and Panel E
 348 (Sitagliptin OGTT). Data from Figs. 2A and 2B were re-analyzed after stratification according to
 349 the sex of the participant. Data on T30:T60 ratios for glucose and insulin are plotted in Panels C
 350 and F, respectively. Data are presented as means \pm SEM. p-values were calculated using a two-
 351 tailed Student's t-test for paired data.



352

353

354

355

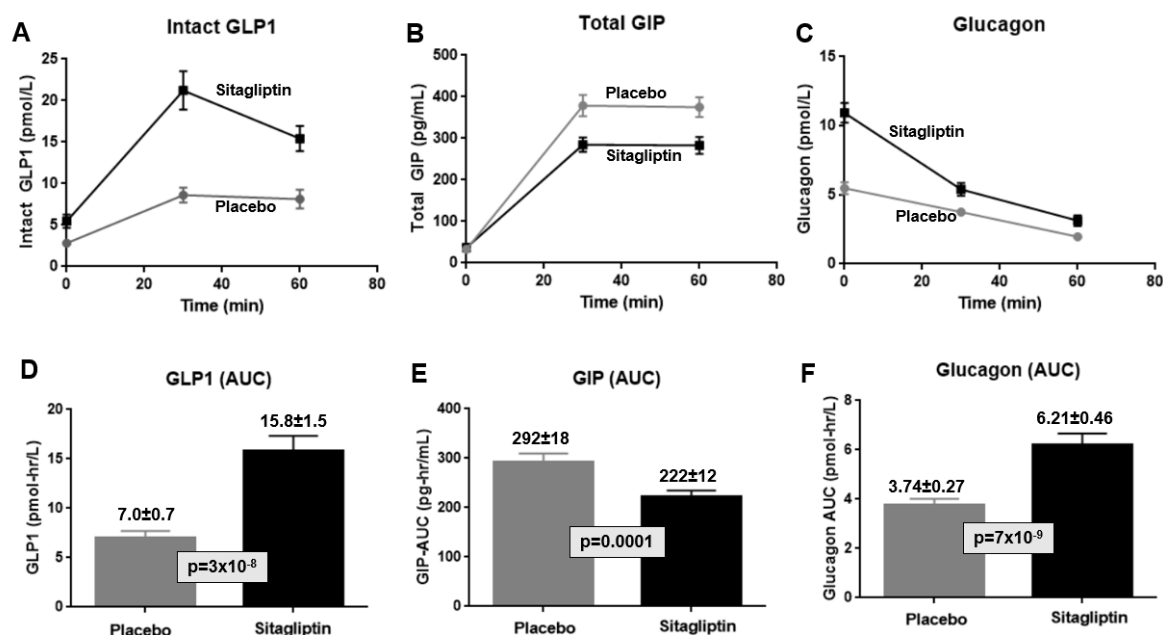
356

357

358

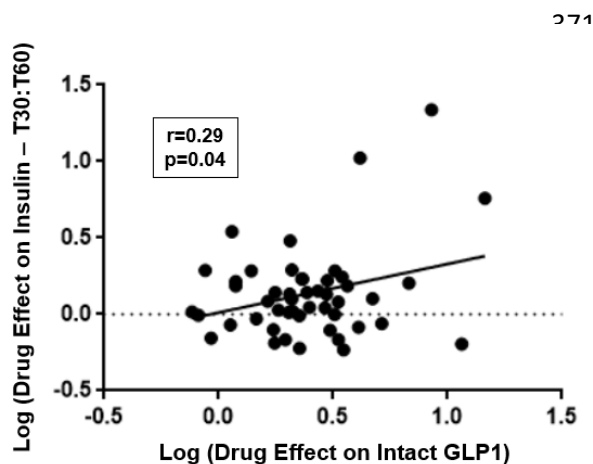
359 FIGURE 4. Effects of sitagliptin on areas under the curve (AUC) for levels of intact GLP1, total
360 GIP, and glucagon as a function of time in an oral glucose tolerance test (OGTT). Time courses
361 are depicted for GLP1 (panel A), GIP (panel B), and glucagon (panel C). Areas under the curve
362 are depicted for GLP1 (panel D), GIP (panel E), and glucagon (panel F). Data are expressed as
363 means \pm SEM. p-values (panels C and D) were calculated using a two-tailed Student's t-test for
364 paired data.

365



366

367 FIGURE 5. Effects of sitagliptin on insulin secretion are correlated with the magnitude of
368 sitagliptin's effects on levels of intact GLP1. Individual values of the logarithm of the T30:T60
369 ratio for insulin are plotted as a function of the logarithms of individual values of the effect of
370 sitagliptin on the AUC for intact GLP1.



377

378

379

380

381 **REFERENCES**

- 382 1. Taylor SI, Yazdi ZS, Beitelshes AL. Pharmacological treatment of hyperglycemia in type 2
383 diabetes. *J Clin Invest*. 2021;131(2).
- 384 2. Merck. Prescribing information for JANUVIA (sitagliptin).
385 https://www.accessdata.fda.gov/drugsatfda_docs/label/2018/021995s042lbl.pdf.
386 Downloaded on October 16, 2023.
- 387 3. Nathan DM, Lachin JM, Balasubramanyam A, et al. Glycemia Reduction in Type 2 Diabetes
388 - Glycemic Outcomes. *N Engl J Med*. 2022;387(12):1063-1074.
- 389 4. Deng Y, Polley EC, Wallach JD, et al. Emulating the GRADE trial using real world data:
390 retrospective comparative effectiveness study. *BMJ*. 2022;379:e070717.
- 391 5. Deng Y, Polley EC, Wallach JD, Herrin J, Ross JS, McCoy RG. Comparative effectiveness
392 of second line glucose lowering drug treatments using real world data: emulation of a target
393 trial. *BMJ Med*. 2023;2(1):e000419.
- 394 6. Beitelshes AL, Leslie BR, Taylor SI. Sodium-Glucose Cotransporter 2 Inhibitors: A Case
395 Study in Translational Research. *Diabetes*. 2019;68(6):1109-1120.
- 396 7. Taylor SI, Montasser ME, Yuen AH, et al. Acute pharmacodynamic responses to exenatide:
397 Drug-induced increases in insulin secretion and glucose effectiveness. *Diabetes Obes*
398 *Metab*. 2023;25(9):2586-2594.
- 399 8. Hsueh WC, Mitchell BD, Aburomia R, et al. Diabetes in the Old Order Amish:
400 characterization and heritability analysis of the Amish Family Diabetes Study. *Diabetes Care*.
401 2000;23(5):595-601.
- 402 9. Herman GA, Bergman A, Stevens C, et al. Effect of single oral doses of sitagliptin, a
403 dipeptidyl peptidase-4 inhibitor, on incretin and plasma glucose levels after an oral glucose
404 tolerance test in patients with type 2 diabetes. *J Clin Endocrinol Metab*. 2006;91(11):4612-
405 4619.

- 406 10. D'Alessio D. The role of dysregulated glucagon secretion in type 2 diabetes. *Diabetes Obes*
407 *Metab.* 2011;13 Suppl 1:126-132.
- 408 11. Haedersdal S, Andersen A, Knop FK, Vilsboll T. Revisiting the role of glucagon in health,
409 diabetes mellitus and other metabolic diseases. *Nat Rev Endocrinol.* 2023;19(6):321-335.
- 410 12. Brooks EP, Sussel L. Not the second fiddle: alpha cell development, identity, and function in
411 health and diabetes. *J Endocrinol.* 2023;258(2).
- 412 13. Mari A, Sallas WM, He YL, et al. Vildagliptin, a dipeptidyl peptidase-IV inhibitor, improves
413 model-assessed beta-cell function in patients with type 2 diabetes. *J Clin Endocrinol Metab.*
414 2005;90(8):4888-4894.
- 415 14. Mari A, Scherbaum WA, Nilsson PM, et al. Characterization of the influence of vildagliptin on
416 model-assessed -cell function in patients with type 2 diabetes and mild hyperglycemia. *J*
417 *Clin Endocrinol Metab.* 2008;93(1):103-109.
- 418 15. Alsalam W, Goransson O, Carr RD, et al. Effect of single-dose DPP-4 inhibitor sitagliptin on
419 beta-cell function and incretin hormone secretion after meal ingestion in healthy volunteers
420 and drug-naive, well-controlled type 2 diabetes subjects. *Diabetes Obes Metab.*
421 2018;20(4):1080-1085.
- 422 16. Anderwald C, Gastaldelli A, Tura A, et al. Mechanism and effects of glucose absorption
423 during an oral glucose tolerance test among females and males. *J Clin Endocrinol Metab.*
424 2011;96(2):515-524.
- 425 17. Kahn SE, Lachin JM, Zinman B, et al. Effects of rosiglitazone, glyburide, and metformin on
426 beta-cell function and insulin sensitivity in ADOPT. *Diabetes.* 2011;60(5):1552-1560.
- 427 18. Davies MJ, Aroda VR, Collins BS, et al. Management of Hyperglycemia in Type 2 Diabetes,
428 2022. A Consensus Report by the American Diabetes Association (ADA) and the European
429 Association for the Study of Diabetes (EASD). *Diabetes Care.* 2022;45(11):2753-2786.

- 430 19. Abdul-Ghani M, Puckett C, Adams J, et al. Durability of Triple Combination Therapy Versus
431 Stepwise Addition Therapy in Patients With New-Onset T2DM: 3-Year Follow-up of EDICT.
432 *Diabetes Care*. 2021;44(2):433-439.
- 433 20. Chung WK, Erion K, Florez JC, et al. Precision Medicine in Diabetes: A Consensus Report
434 From the American Diabetes Association (ADA) and the European Association for the Study
435 of Diabetes (EASD). *Diabetes Care*. 2020;43(7):1617-1635.
- 436

1 **Supplementary Appendix**

2
3 **Acute pharmacodynamic responses to sitagliptin:**

4 **Drug-induced increase in early insulin secretion in oral glucose tolerance test.**

5
6 Amber L. Beitelshes PharmD¹ | Elizabeth A. Streeten MD¹ |

7 Zhinous Shahidzadeh Yazdi MD¹ | Hilary B. Whitlatch MD¹ | Braxton D. Mitchell PhD¹ |

8 Alan R. Shuldiner MD¹ | May E. Montasser PhD¹ | Simeon I. Taylor MD¹

9
10 ¹ Department of Medicine, Division of Endocrinology, Diabetes, and Nutrition, University of
11 Maryland School of Medicine, Baltimore, MD 21201, USA

12 ² Diabetes, Endocrinology, and Obesity Branch, National Institute of Diabetes and Digestive and
13 Kidney Diseases, National Institutes of Health, Bethesda, MD 20892, USA

14
15 Correspondence

16 Simeon I. Taylor, MD, PhD, Department of Medicine, University of Maryland School of Medicine,
17 Baltimore, MD 21201, USA

18 Email: staylor2@som.umaryland.edu

19
20 Funding information

21 American Diabetes Association (1-16-ICTS-112) and National Institute of Diabetes and
22 Digestive and Kidney Disease (R01DK130238, T32DK098107, and P30DK072488)

24	<u>Table of Contents</u>	
25	1 Exclusion criteria	p. 3
26	2 Oral glucose tolerance tests (OGTTs)	p. 4
27	3 Clinical chemistry	p. 5
28	TABLE S1. Demographics and baseline characteristics of study population	p. 6
29	TABLE S2. Effect of sitagliptin on T30:T60 ratios for glucose and insulin:	p. 7
30	data stratified based on self-identified sex.	
31	TABLE S3. Association of self-identified sex with areas-under-the-curve (AUC)	p. 8
32	for glucose in oral glucose tolerance test.	
33	FIGURE S1. CONSORT diagram summarizing disposition of research participants	p. 9
34	FIGURE S2. Inter-individual variation in effects of sitagliptin on T30:T60 ratios for	
35	glucose and insulin	p. 11
36	FIGURE S3. Association of age with responses to sitagliptin	p. 12
37	FIGURE S4. Association of age with responses to sitagliptin	p. 13
38	FIGURE S5. Correlation of pharmacodynamic effects of sitagliptin with	p. 14
39	pharmacodynamic effect exenatide	
40	4 References	p. 15

41 1 | Exclusion Criteria

- 42 • Known allergy to exenatide
- 43 • History of diabetes, random glucose >200 mg/dL, or HbA1c \geq 6.5%
- 44 • Significant cardiac, hepatic, pulmonary, or renal disease or other diseases that the
45 investigator judged would make interpretation of the results difficult or increase the risk of
46 participation
- 47 • Seizure disorder
- 48 • Pregnant by self-report or known pregnancy within 3 months of the start of study
- 49 • Currently breast feeding or breast feeding within 3 months of the start of the study
- 50 • Estimated glomerular filtration rate <60 mL/min/1.73m²
- 51 • Hematocrit <35%
- 52 • Liver function tests greater than 2 times the upper limit of normal
- 53 • Abnormal TSH
- 54 • History of pancreatitis or pancreatic cancer. Personal or family history of medullary
55 carcinoma of the thyroid.

56 2 | Oral glucose tolerance tests (OGTTs)

57 After an overnight fast, participants were transported to the Amish Research Clinic where
58 OGTTs were performed as described previously (1). Briefly, glucose (75 g, p.o.) was
59 administered; blood samples were obtained at the following seven time points: 0, 30, 60, 90,
60 120, 150, and 180 min. Sitagliptin (100 mg, p.o.) was administered 2 hrs prior to the second
61 OGTT. Plasma levels of glucose and insulin were measured in blood samples for all seven time
62 points. Plasma levels of intact GLP1, total GIP, and glucagon were measured in blood samples
63 for the first three time points (0, 30, and 60 min).

64

65 3 | Clinical Chemistry

66 Screening blood samples were obtained by a research nurse during home visits and collected in
67 test tubes as appropriate for each assay: EDTA anticoagulant (purple top tube) for
68 measurement of hematocrit and HbA1c; heparin anticoagulant (green top tube) for
69 measurement of TSH; gray top tubes containing sodium fluoride and potassium oxalate for
70 measurement of fasting plasma glucose; red top tube for collecting serum samples. After
71 placing gray, purple, and green top tubes on ice, blood samples were transported to the clinical
72 laboratory at the Amish Research Clinic (maximum transport time, 2 hours). After centrifugation
73 (3300 rpm for 10 min), plasma/serum was sent on the same day to Quest Diagnostics for assay.
74 Blood samples for OGTTs were collected in EDTA-containing purple top tubes for measurement
75 of plasma insulin and in EDTA/oxalate-containing gray top tubes for measurement of plasma
76 glucose. Fifty μL of aprotinin solution (20,000 KIU/mL) was added per mL blood for glucagon
77 assays. A DPP4 inhibitor (Millipore) was added to plasma samples for assays of GLP1 and GIP
78 at a concentration of 10 μL DPP4 inhibitor per mL blood. Glucose was measured in duplicate
79 using a YSI glucose analyzer. Insulin was assayed in duplicate following the manufacturer's
80 directions using reagents in kits (#10-1113-01) purchased from Mercodia Inc. The following kits
81 were used for assays of other peptides: intact GLP1 (Millipore #EGLP-35K), total GIP (Millipore
82 #EXHGIP-54K), and glucagon (Mercodia #10-1271-01).

83

84 **Table S1. Demographics and baseline characteristics of study population**

Mean ± SEM (range)	Males	Females	Total
N (sample size)	27	20	47
Age (years)	44.3 ± 2.2	51.8 ± 2.2	47.5 ± 1.6
BMI (kg/m²)	27.5 ± 0.7	28.7 ± 0.8	28.0 ± 0.5
HbA1c (%)	5.49 ± 0.07	5.59 ± 0.07	5.53 ± 0.05
Serum creatinine (mg/dL)	0.90 ± 0.02	0.74 ± 0.02	0.83 ± 0.02
eGFR (mL/min/1.73 m²)	101.0 ± 2.5	94.1 ± 3.6	98.0 ± 2.1
Hematocrit (%)	43.8 ± 0.5	39.0 ± 0.5	41.8 ± 0.5
Aspartate amino transferase (U/L)	18.5 ± 0.9	17.4 ± 0.9	18.0 ± 0.6
Alanine amino transferase (U/L)	20.7 ± 1.7	17.3 ± 1.2	19.3 ± 1.0
TSH (mIU/L)	1.82 ± 0.20	1.81 ± 0.22	1.82 ± 0.14

85

86 **TABLE S2. Effect of sitagliptin on T30:T60 ratios for glucose and insulin: data stratified**
87 **based on self-identified sex.** The magnitude of drug effects were calculated by dividing the
88 T30:T60 ratio during the sitagliptin OGTT by the corresponding value for the control OGTT.
89 Data are expressed as means \pm SEM for 47 participants (27 males and 20 females). P-values
90 were calculated using two-tailed Student's t-test for paired data for the T30:T60 ratio for glucose
91 and the log(T30:T60 ratio for insulin).

92

Effect of sitagliptin	Males	Females	p-value
T30:T60 ratio (glucose)	1.26 \pm 0.08	1.16 \pm 0.06	0.36
T30:T60 ratio (insulin)	2.44 \pm 0.82	1.46 \pm 0.26	0.35
N	27	20	

93

94 **TABLE S3. Association of self-identified sex with areas-under-the-curve (AUC) for**
 95 **glucose in oral glucose tolerance test.** Areas-under-the-curve for glucose and insulin were
 96 calculated using the trapezoidal rule. Data are presented as means \pm SEM. p-values were
 97 calculated using two-tailed Student's t-test for either unpaired (association with sex) or paired
 98 data (effect of sitagliptin).

99
 100 **A. Association with sex**

AUC	Treatment	Males	Females	p-value (for assoc. with sex)
Glucose	Control	2393 \pm 72	2673 \pm 94	0.02
Glucose	Sitagliptin	2181 \pm 66	2465 \pm 94	0.01
Insulin	Control	526 \pm 45	666 \pm 52	0.06
Insulin	Sitagliptin	501 \pm 48	670 \pm 72	0.05
N		27	20	

101
 102 **B. Effect of sitagliptin**

AUC	Sex	Control	Sitagliptin	p-value (for effect of sitagliptin)
Glucose	Male	2393 \pm 72	2181 \pm 66	0.0002
Glucose	Female	2673 \pm 94	2465 \pm 94	8.3x10 ⁻¹⁰
Insulin	Male	526 \pm 45	501 \pm 48	0.61
Insulin	Female	666 \pm 52	670 \pm 72	0.95
N		27	20	

103

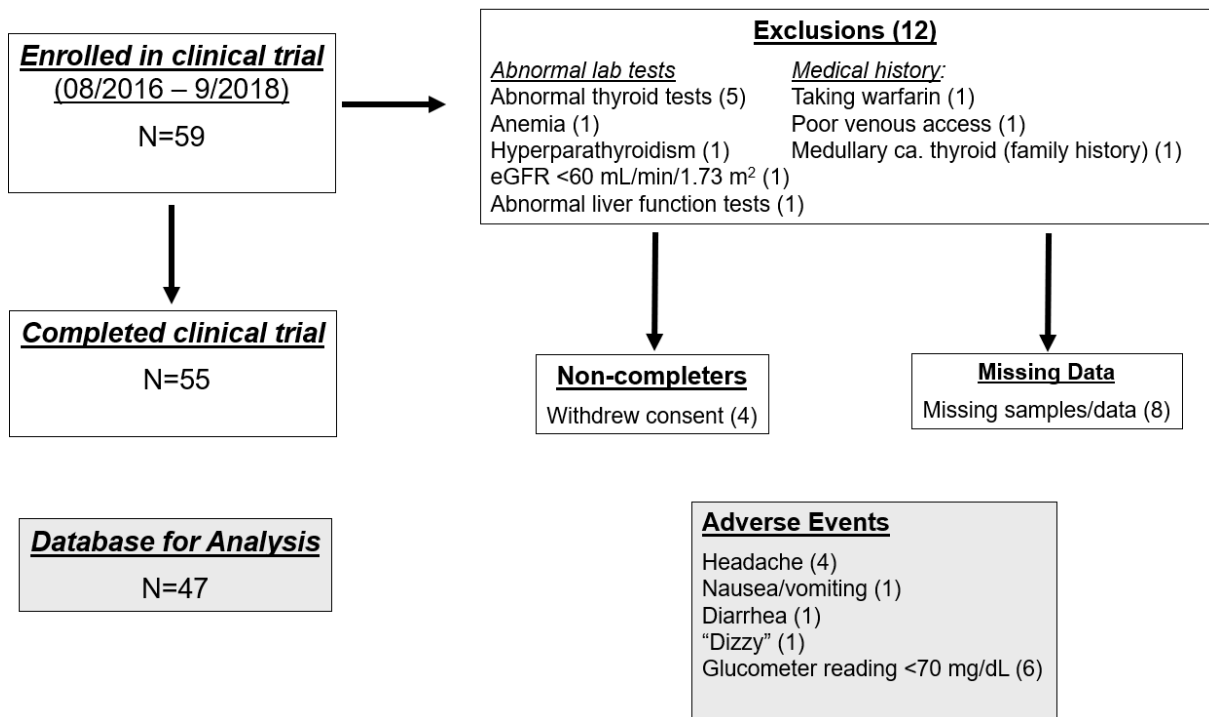
104 **Figure S1. CONSORT diagram summarizing disposition of research participants.** Seventy-
105 one individuals underwent screening for the clinical trial between August, 2016 – November,
106 2018. Twelve enrollees were excluded for the following reasons (Fig. S1): low hematocrit (N=1),
107 abnormal TSH levels (N=5), abnormal liver function tests (N=1), family history of medullary
108 carcinoma of the thyroid (N=1), primary hyperparathyroidism (N=1), low eGFR (N=1), poor
109 venous access (N=1), and treatment with warfarin (N=1). Thus, 59 individuals were judged to be
110 eligible for the clinical trial. Three individuals changed their minds and withdrew from the study
111 after providing informed consent but before undergoing an intravenous glucose tolerance test;
112 technical challenges with establishing venous access led to withdrawal of an additional
113 participant. Fifty-five participants completed two oral glucose tolerance tests. Eight individuals
114 were excluded from the database because of missing data. Thus, data from 47 individuals
115 comprised the final database for the analyses. There were 13 reported adverse events of mild
116 severity. One participant reported feeling light-headed or “dizzy”. There were six events in which
117 a participant’s plasma glucose (determined using a glucometer) was <70 mg/dL during the
118 course of an OGTT. Four participants reported headaches; one reported diarrhea; and one
119 reported nausea.

120

121

122 **FIGURE S1. CONSORT Diagram**

123

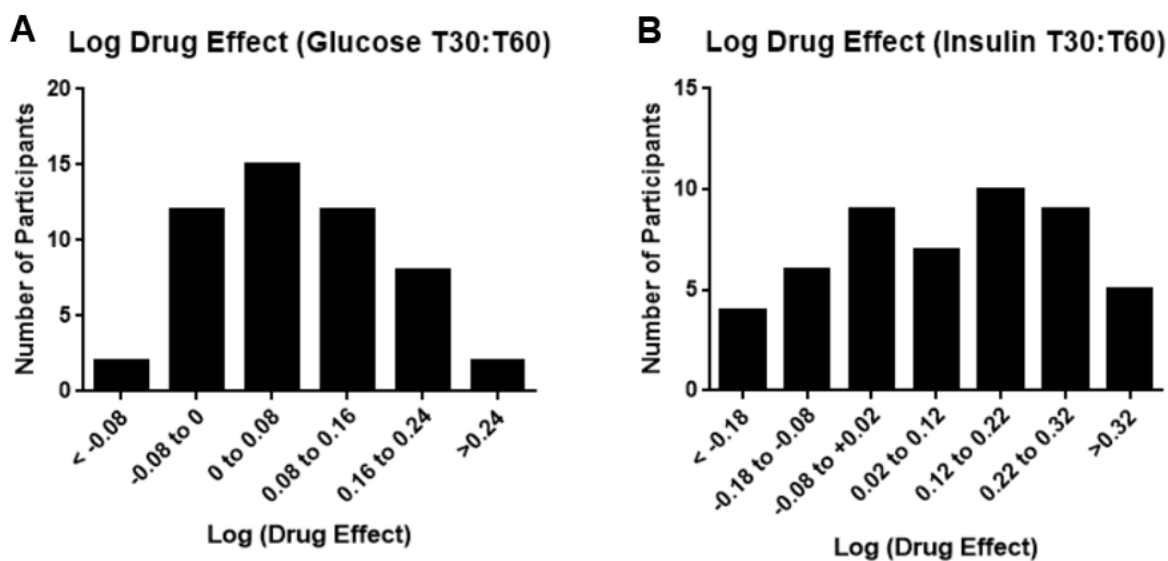


124

125

126 **FIGURE S2.** Indices for the effects of sitagliptin were calculated as the ratios of T30:T60 ratio
127 from the sitagliptin OGTT divided by the corresponding ratio from the control OGTT. Analyses
128 were conducted on logarithmically transformed ratios of drug effects for sitagliptin on glucose
129 (panel A) and insulin (panel B). The graphs depict the numbers of individuals whose log(drug
130 effects) fall into the ranges depicted on the respective x-axes.

131

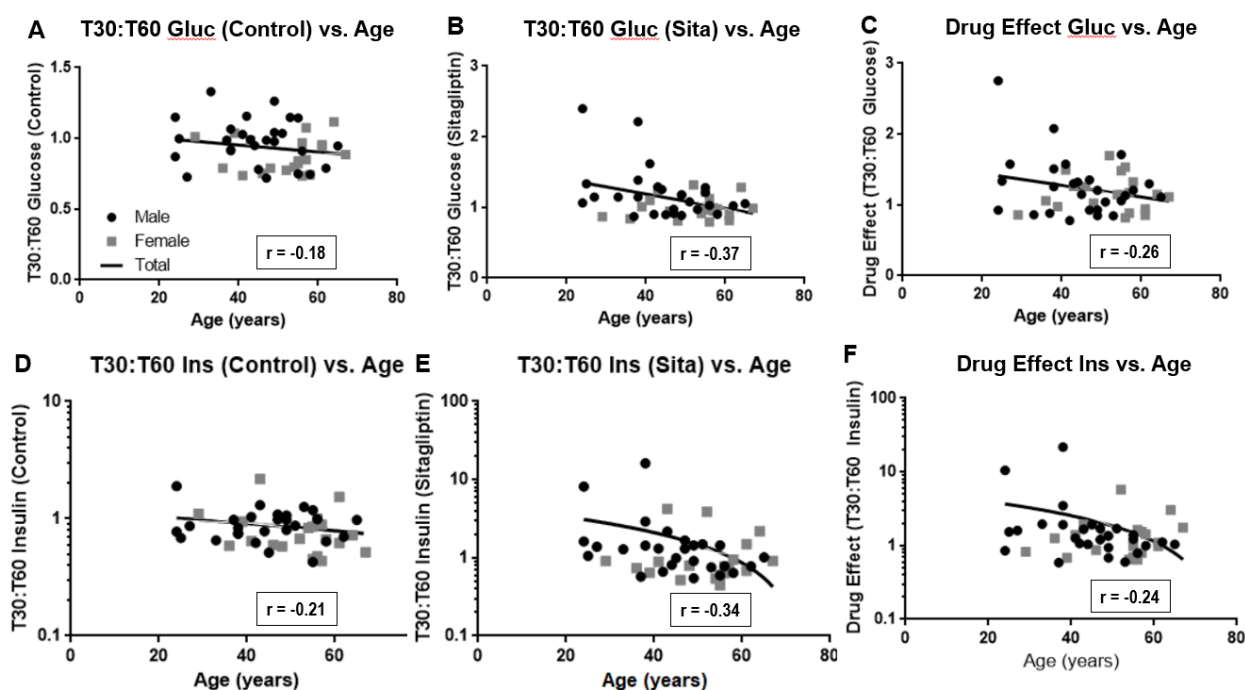


132

133

134

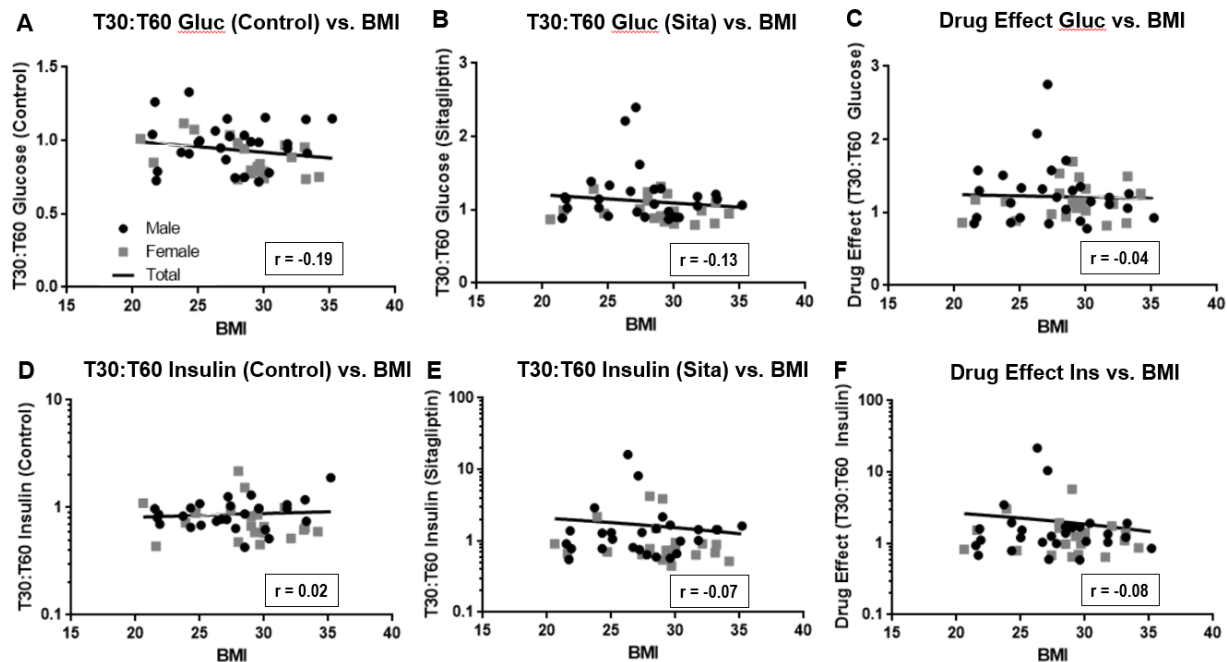
135 **FIGURE S3. Association of age with responses to sitagliptin.** This Figure presents an
136 analysis of associations of age with data on T30:T60 ratios for glucose (panels A-C) and insulin
137 (panels D-F). Data for males and females are depicted by black circles or gray squares,
138 respectively. Data for T30:T60 ratios for glucose are plotted on a linear scale; data for T30:T60
139 ratios for insulin are plotted on a logarithmic scale. Each panel includes the least squares linear
140 fit to the data. Correlation coefficients (r) were calculated using the data corresponding to
141 T30:T60 ratios for glucose (panels A and B) or logarithms of the T30:T60 ratios for insulin
142 (panels D and E). The drug effect for T30:T60 ratio for glucose was calculated as the ratio of the
143 T30:T60 ratio for glucose in the control OGTT divided by the T30:T60 ratio in the sitagliptin
144 OGTT (panel C). The drug effect for T30:T60 ratio for insulin was calculated as the difference
145 when the T30:T60 ratio for insulin in the sitagliptin OGTT was subtracted from the T30:T60 ratio
146 in the control OGTT (panel F).
147



148

149

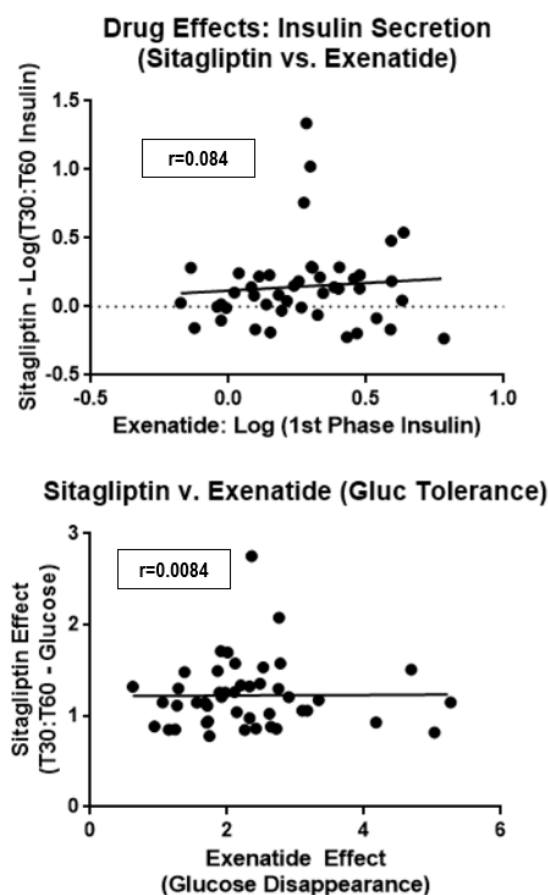
150 **FIGURE S4. Association of BMI with responses to sitagliptin.** This Figure presents an
151 analysis of associations of BMI with data on T30:T60 ratios for glucose (panels A-C) and insulin
152 (panels D-F). Data for males and females are depicted by black circles or gray squares,
153 respectively. Data for T30:T60 ratios for glucose are plotted on a linear scale; data for T30:T60
154 ratios for insulin are plotted on a logarithmic scale. Each panel includes the least squares linear
155 fit to the data. Correlation coefficients (r) were calculated using the data corresponding to
156 T30:T60 ratios for glucose (panels A and B) or logarithms of the T30:T60 ratios for insulin
157 (panels D and E). The drug effect for T30:T60 ratio for glucose was calculated as the ratio of the
158 T30:T60 ratio for glucose in the control OGTT divided by the T30:T60 ratio in the sitagliptin
159 OGTT (panel C). The drug effect for T30:T60 ratio for insulin was calculated as the difference
160 when the T30:T60 ratio for insulin in the sitagliptin OGTT was subtracted from the T30:T60 ratio
161 in the control OGTT (panel F).



162

163

164 **FIGURE S5. Correlation of pharmacodynamic effects of sitagliptin with**
165 **pharmacodynamic effects of exenatide.** The effect of sitagliptin on $\log(T30:T60$ for insulin) is
166 plotted as a function of the effect of exenatide on $\log(1^{\text{st}}$ phase insulin secretion) is plotted in the
167 upper panel. The effect of sitagliptin on $T30:T60$ for glucose is plotted as a function of the effect
168 of exenatide on the glucose disappearance rate is plotted in the lower panel. Data on
169 pharmacodynamic effects of exenatide are based on data from the parent clinical trial with
170 exenatide [REF]. Correlation coefficients were calculated using software provided in Microsoft
171 EXCEL.



172
173

174 **REFERENCES**

- 175 1. Hsueh, W. C., Mitchell, B. D., Aburomia, R., Pollin, T., Sakul, H., Gelder Ehm, M. *et al.*
176 (2000) Diabetes in the Old Order Amish: characterization and heritability analysis of the
177 Amish Family Diabetes Study *Diabetes Care* **23**, 595-601 [10.2337/diacare.23.5.595](https://doi.org/10.2337/diacare.23.5.595)

178