

1 Association between lipoprotein(a), *LPA*
2 genetic risk score, aortic valve disease,
3 and subsequent major adverse
4 cardiovascular events
5

6 Running title: Genetically determined Lp(a) and calcific aortic valve disease

7

8 Matthew K Moore¹, Gregory T Jones², Sally McCormick³, Michael JA Williams^{1,4}, Sean
9 Coffey^{1, 4}

10 ¹ Department of Medicine, HeartOtago, Dunedin School of Medicine, University of Otago,
11 Dunedin, New Zealand

12 ² Department of Surgical Sciences, Dunedin School of Medicine, University of Otago,
13 Dunedin, New Zealand

14 ³ Department of Biochemistry, University of Otago, Dunedin, New Zealand

15 ⁴ Department of Cardiology, Dunedin Hospital, Southern District Health Board, Dunedin,
16 New Zealand

17

18 Corresponding author: Sean Coffey, sean.coffey@otago.ac.nz

19

1 **Abstract (current 250 words)**

2

3 **Background**

4 Cohort studies have demonstrated associations between calcific aortic valve disease (CAVD)
5 and Lp(a). As Lp(a) is almost entirely genetically determined, with the increasing clinical
6 availability of genetic information, we aimed to determine if Lp(a), when predicted from
7 genetic data, is associated with CAVD and major adverse cardiovascular events (MACE).

8

9 **Methods**

10 Patients undergoing coronary angiography were invited to participate in the study. Of 752
11 analysable participants, 446 had Lp(a) measured, and 703 had a calculable *LPA* genetic risk
12 score (GRS). CAVD was categorized as absent/present and by severity. The primary
13 outcomes were presence of CAVD at baseline, and MACE over seven years follow-up.

14

15 **Results**

16 The GRS explained 45% of the variation in Lp(a). After adjustment for cardiac risk factors
17 and coronary artery disease, the odds of CAVD increased with Lp(a) (OR 1.039 per 10 unit
18 increase, 95% C.I. 1.022 – 1.057, $p < 0.001$) and GRS (OR 1.054 per 10-unit increase, 95%
19 C.I. 1.024 – 1.086; $p < 0.001$). Lp(a) and the GRS as continuous variables were not associated
20 with subsequent MACE. Dichotomised GRS (>54) was associated with MACE, but this

1 relationship became non-significant when coronary artery disease classification was added
2 into the model (OR 1.333, 95% C.I. 0.927 – 1.912; $p = 0.12$).

3

4 Conclusion

5 An *LPA* GRS can explain 45% of the variation in Lp(a) levels, and both Lp(a) and the GRS
6 are associated with CAVD. An elevated GRS is associated with future cardiac events in a
7 secondary risk setting, but, if coronary artery disease status is known, it does not provide
8 additional prognostic information.

9

1 Introduction

2 Calcific aortic valve disease (CAVD) is a growing issue, with the number of non-rheumatic
3 cases increasing by 76% in the past decade (1). Increasing age is the main risk factor for
4 CAVD (2, 3), and despite the association of many other risk factors (4-7), there is no
5 preventive or curative therapy aside from aortic valve replacement (AVR). Large cohort
6 studies have demonstrated associations between high lipoprotein(a) (Lp(a)) and CAVD, both
7 in terms of prevalence and incidence (8-11). Similarly, Lp(a) has been associated with major
8 adverse cardiovascular events (MACE), in particular, nonfatal myocardial infarction,
9 coronary death, and ischaemic stroke (12). A recent consensus statement from the European
10 Atherosclerosis Society states that Lp(a) is a causal, continuous risk factor for CAVD, and
11 recommends individuals have an Lp(a) measurement at least once in their lifetime (13). The
12 vast majority of an individual's Lp(a) level is genetically determined, and a recent publication
13 by Burgess *et al* developed a genetic risk score (GRS) which predicted 50-60% of the
14 variation in Lp(a) (a "genetically predicted" Lp(a) level) (14). This GRS has been previously
15 associated with CAVD (15), but has yet to be tested in other populations. Although there has
16 been significant interest garnered in what levels of Lp(a) confer the most risk, there remains
17 significant variation between Lp(a) assays, with different assays of the same Lp(a) sample
18 varying by 8-22% (16). Given that Lp(a) levels in a population can span nearly three orders
19 of magnitude (17) and recommendations for broad screening, variations between assays may
20 lead to imprecision in the estimation of risk.

21

22 This study aimed to determine if Lp(a), as either direct plasma protein levels or estimated
23 using a GRS, is independently associated with CAVD or MACE in a New Zealand based
24 clinical cohort.

1

2 **Methods**

3 *Study participants and setting*

4 The data for this study were obtained from consecutive individuals undergoing coronary
5 angiography between January 2012 and May 2013 at Dunedin Hospital, New Zealand, who
6 took part in a study examining the prevalence of abdominal aortic aneurysm in this patient
7 population. All participants provided informed consent before their angiography, and ethical
8 approval was given by the Upper South A Regional Ethics Committee on 26 January 2012
9 (Ref: URA/11/11/072). Of 1100 patients invited into the study, 48 declined involvement or
10 were too unwell to participate. 1052 people (participation rate of 95.6%) thus comprised the
11 primary study cohort. Further information on this cohort can be found in a paper by Jones *et*
12 *al* (18). For this study, those without a baseline echocardiogram were excluded, giving a final
13 study cohort of 783 people.

14 *Variables and potential confounders*

15 Study participants filled out a questionnaire at baseline which detailed potential confounders.
16 The following variables were collected by the study team at time of enrolment: age, sex,
17 ethnicity, height, weight, waist-hip ratio, atrial fibrillation on ECG, previous percutaneous
18 coronary intervention, history of previous disease (arthritis, dyslipidaemia, stroke, diabetes,
19 hypertension), pack-years smoking, smoking status (current, ex, never), peripheral vascular
20 disease, and chronic kidney disease. Indication for angiography, and overall coronary artery
21 disease classification (using the criteria described in Jones *et al* (18)) were obtained from the
22 electronic medical record.

1 *Follow up data collection*

2 Participants were followed-up via their electronic health records (HealthConnectSouth, Orion
3 Health, Auckland, New Zealand) to January 2021.

4 *Classification of calcific aortic valve disease*

5 The presence of CAVD was determined by the clinical classification on the participants'
6 baseline echocardiography report and classified as either Prevalent CAVD (any disease, from
7 sclerosis to severely calcified) or No CAVD. The prevalent CAVD group was further
8 subdivided into the different strata of valvular disease: Early (sclerosis, mild, mild to
9 moderate) or Late (moderate, moderate to severe, severe).

10 *Definition of major adverse cardiovascular events (MACE)*

11 For this study, MACE is defined according to the American College of Cardiology/American
12 Heart Association Key Data Elements and Definitions for Cardiovascular Endpoint Events in
13 Clinical Trials (19). It is a composite outcome of stroke, acute myocardial infarction,
14 hospitalization due to heart failure, hospitalization due to unstable angina, unplanned
15 revascularization, and cardiovascular death. If a diagnosis of any MACE was recorded on a
16 participant's discharge summary, the date and type of MACE was recorded. In the instance of
17 acute myocardial infarction, the type (STEMI/NSTEMI) was also recorded.

18 *Outcome measures*

19 The primary outcomes were presence of calcific aortic valve disease, and MACE during the
20 follow up period. Secondary outcomes were the subdivisions of CAVD (None, early, late)
21 and the Individual components of MACE.

1 *Measurement of plasma Lp(a)*

2 Plasma lipoprotein(a) concentrations (in nmol/L) were previously acquired for a subset of this
3 cohort (n= 446 subjects that had indications for angiography related to myocardial infarction
4 or unstable angina) as part of a study examining DNA methylation and Lp(a) (20). The
5 specific enzyme-linked immunosorbent assay (ELISA)-based method used was described in
6 that paper (20). A key element of this assay is that the antibodies used do not bind to the
7 variable repeat regions of the apo(a) protein and the resulting Lp(a) measurements are
8 therefore independent of apo(a) isoform size.

9 *Genetic risk score calculation*

10 Burgess *et al* have previously developed a genetic risk score (GRS) that aimed to predict
11 Lp(a) concentration using 43 single nucleotide polymorphisms (SNPs) in the *LPA* gene (14).
12 The GRS genetically estimates the Lp(a) level for an individual. A subset of study
13 participants (n=727) had whole-genome SNP data available, including a variety of SNPs of
14 the *LPA* gene (20). In all, 40 (directly genotyped or imputed with high (>0.9) quality scores)
15 of the 43 Burgess GRS SNPs were available for the Lp(a) GRS calculation. The GRS was
16 calculated as:

$$GRS = \sum [\beta \times SNV]$$

17 Where β is the conditional association with Lp(a), and SNV is number of effect alleles at that
18 locus (0, 1 or 2). The units of the GRS were multiplied by 2.15 to convert from mg/dL to
19 nmol/L, as has been done previously (21). A full list of the used genetic variants and their
20 conditional associations with Lp(a) can be found in in the supplementary material (Table S1).

21

1 *Statistical methods*

2 Data linked to a participant's unique National Health Index (NHI) number was stored and
3 managed securely using REDCap electronic data capture tools hosted at the University of
4 Otago (22, 23). All analysis was performed on a de-identified dataset with the NHI numbers
5 replaced with an anonymous identifier. Continuous data are expressed as mean (standard
6 deviation) if normally distributed, and as median (interquartile range) if non-normally
7 distributed. Data were analysed with the Mann-Whitney *U*-test if continuous and non-
8 normally distributed, and with ANOVA if continuous and normally distributed. Categorical
9 variables were analysed by the Chi-square test.

10 Lp(a) and GRS were analysed as both continuous and categorical variables. To determine
11 dichotomised values between "high" and "low" Lp(a), receiver operating characteristic
12 (ROC) curve analyses were conducted, and the Youden's index used to identify associated
13 criterion. MACE at seven years was treated as a binary variable. Kaplan-Meier survival
14 curves were also produced, stratified by measured Lp(a) or GRS classification. Group
15 differences were assessed using the log-rank test. Associations between valve disease and
16 Lp(a)/GRS were measured using forward stepwise logistic regression. All data analysis was
17 performed using R, version 3.6.3, and the R packages Survminer and tidyverse (24-26).

18

1 Results

2 *Baseline characteristics*

3 The demographics of the study cohort can be found in Table 1. In all, 26 of the 783
4 participants either had an AVR at baseline or did not have CAVD severity reported, and were
5 excluded from the study, giving a final cohort size of 757. Of these participants, 433 had an
6 available Lp(a) assay result, and 703 had a calculable GRS. Participants were followed up to
7 the 31st of January 2021, giving a mean follow up time of 8.34 ± 0.38 years.

8 Of the 433 with an Lp(a) measure available, there were 172 (38.6%) cases of CAVD. Of
9 these 172, 156 were “early” disease and 16 were “late” disease. Of the 703 with a calculable
10 GRS, there were 283 (38.9%) cases of CAVD. Of these, 220 were “early” disease and 63
11 were “late” disease.

12

13 *Distributions of measured and GRS calculated Lp(a) and their association*

14 The distribution of plasma Lp(a) was positively skewed, with a long rightwards tail (**Figure**
15 **1**). The data range spans nearly three orders of magnitude, with a median of 62 nmol/L (IQR:
16 24-147 nmol/L).

17

18 In the 703 participants with a calculable GRS, the distribution of the genetically predicted
19 Lp(a) was bimodal (**Figure 2**) and had a smaller range with a median of 16.8 nmol/L (IQR:
20 2.47-65.90 nmol/L). It should be noted that an individual’s GRS could be below zero, as
21 some of the conditional SNP associations were negative.

22

1 In those with both GRS and measured Lp(a), measured plasma Lp(a) and the genetically
2 predicted Lp(a) were significantly correlated (**Figure 3**; $\text{Measured Lp(a)} = (\text{GRS} * 1.52) +$
3 47.35 , $p < 0.001$). The GRS appeared to explain 45% of the variation in plasma Lp(a) levels.
4 A Bland-Altman plot of the GRS against measured Lp(a) is shown in **Figure 4**, showing a
5 bias of -69.9, and uncertainty interval of -268.6 - 128.9 and increasing bias with increasing
6 mean Lp(a) measurement.

7

8 *Association of measured Lp(a) with CAVD*

9 A relatively small number of individuals had late CAVD, which made analysis across the
10 strata of the secondary outcome (no CAVD versus early, or versus late) challenging. Only 16
11 participants had late CAVD in the plasma Lp(a) group, and 63 in the GRS group. As a result,
12 comparisons are focused on no CAVD versus any CAVD.

13

14 Plasma Lp(a) as a continuous variable was significantly associated with CAVD in both the
15 univariable and multivariable logistic regression analyses. A 10 nmol/L increase in Lp(a) was
16 associated with 1.04 times the odds of having CAVD in the second adjusted model (see Table
17 2). The percentile plot of measured plasma Lp(a) levels (**Figure 6**) showed a divergence in
18 levels between those with and without CAVD at the 50th percentile, with the 75th percentile (a
19 commonly applied risk association cut-off) corresponding to an Lp(a) concentration of 147
20 nmol/L). Similarly, when examining the GRS percentiles plot (Figure S1), there was a
21 divergence at the 60th percentile, with the 75th percentile corresponding to a predicted Lp(a)
22 of 66 nmol/L.

23

1

2 The ROC curve for plasma Lp(a) vs CAVD status showed area under the ROC curve of 0.59
3 (95% confidence interval 0.54-0.65, **Figure 6**). A cut-off value for “elevated” Lp(a) for
4 further analysis was 69 nmol/L, calculated using the Youden’s index associated criterion of
5 the ROC curve. At this level, there was a sensitivity 0.41 and specificity 0.43 for CAVD.
6 Previous research has also identified the 75th percentile as a high-risk value (2), and this was
7 additionally investigated using multivariable logistic regression, with similar results (Table
8 S2).

1 *Association of the genetic risk score (GRS) for Lp(a) with CAVD*

2 Measured plasma Lp(a) and the GRS for Lp(a) were not significantly different from each
3 other in their ability to predict prevalent CAVD (**Figure 6**). For completeness, logistic
4 regression was also performed on the GRS with CAVD as the binary outcome variable. A
5 $GRS \geq 34.4$ was identified as the optimal cut-off value for CAVD risk (sensitivity 0.28,
6 specificity 0.59), using the Youden's index associated criterion. In both the univariate and
7 adjusted models, elevated GRS was associated with an increased odds of prevalent CAVD
8 (**Table 3**), however, the strength of this association was weaker than the models utilizing
9 plasma Lp(a). The GRS as a continuous variable was also significantly associated with
10 CAVD in the adjusted (age, sex, BMI, dyslipidaemia, diabetes, hypertension, smoking)
11 model, with an odds ratio of 1.054 per 10 unit increase (95% C.I. 1.024 to 1.086; $p < 0.001$).

12

13 *Association of Lp(a) and the GRS with MACE*

14 For the MACE association analysis, those participants who were previously excluded for
15 missing CAVD data, were reintroduced to the cohort. Over the follow-up period, 266
16 (34.0%) of the participants had a MACE. This represented an annualized event rate of 4.1%.
17 Given that the shortest length of follow up was 7.6 years, the outcome variable of interest was
18 seven year MACE.

19 Neither measured plasma Lp(a) or the Lp(a) GRS were associated with MACE at seven years
20 using logistic regression ($p = 0.88$ for plasma Lp(a), $p = 0.35$ for Lp(a) GRS). However,
21 using the optimal (elevated) GRS for predicting seven-year MACE (Youden's index
22 associated criterion value of 54nmol/L), suggested a significant association with shorter
23 event-free survival (**Figure 7**– log-rank test $p < 0.05$).

1

2 Logistic regression analysis of the dichotomised GRS, using a cut-off value of 54, yielded a
3 small but significant relationship with seven-year MACE (**Table 4Table**). However, this
4 relationship was not significant if the status of coronary artery disease was added to the
5 model.

6

7 In univariate analysis, dyslipidaemia (OR 2.07, $p < 0.001$), hypertension (OR 1.45, $p < 0.05$),
8 being an ex-smoker (OR 1.51, $p < 0.05$), diabetes (OR 2.66, $p < 0.001$), BMI (OR per 1 unit
9 increase 1.03, $p < 0.05$), non-obstructive CAD (OR 2.42 compared to no coronary artery
10 disease, $p < 0.01$), and obstructive CAD (OR 3.94 compared to no CAD, $p < 0.001$) were
11 associated with seven-year MACE. Current smoking was not associated with seven year
12 MACE in this cohort.

13

14 Discussion

15 Lp(a) has elicited significant research interest in the past two decades, largely due to its
16 consistent associations with cardiovascular events and coronary disease and the development
17 of Lp(a)-lowering agents currently in phase III clinical trial i.e. pelacarsen (27). Such interest
18 has expanded into the field of CAVD. Associations between Lp(a) and CAVD vary
19 depending on the population studied, if it is incident or prevalent disease as the outcome of
20 interest, and whether Lp(a) is analysed as a continuous or binary outcome, or by percentiles
21 (2, 28, 29). There is no clear consensus regarding the most appropriate “high-risk” threshold
22 values, with in-sample 75th or 80th percentile values often being used, making comparison
23 between studies and especially assessment of predictive validity difficult (30, 31). This may

1 be due to previous mass and molar concentration measures that are the consequence of
2 differing Lp(a) isoform sizes between individuals (32). Nevertheless, previous studies have
3 shown a clear relationship between Lp(a) and both prevalent and incident CAVD. The
4 Cardiovascular Health Study was the first large-scale study to investigate this association,
5 showing that those with values above the 75th percentile had a (adjusted) 23% greater risk of
6 CAVD than those in the lowest quartile (2). Recent work in the Multi-Ethnic Study of
7 Atherosclerosis and by Kaiser *et al* have found Lp(a) to be associated with aortic valve
8 calcium, as measured by Agatston score on CT (28, 29). Several population studies have
9 shown associations between elevated Lp(a) and incident CAVD (8, 10, 11). The European
10 Atherosclerosis Society notes Lp(a) to be a continuous, causal risk factor for CAVD, based
11 on the strong genetic association between the *LPA* gene and CAVD (13). Our present study
12 aimed to evaluate both direct and genetically predicted measures of Lp(a) as a risk factor for
13 prevalent CAVD and MACE in a New Zealand cohort.

14

15 Plasma Lp(a) was significantly associated with CAVD in both continuous and categorical
16 terms (OR 1.04 per 10 nmol/L increase (95% C.I. 1.02 – 1.06)), an observation which is
17 consistent with the previous literature (2, 28, 29). Interestingly, adjustment for confounding
18 variables increased the strength of the relationship, potentially suggesting that cardiovascular
19 risk factors may be causing a bias towards the null value. Almost the entire cohort had a
20 calculable Lp(a) genetic risk score, allowing for a greater capture of the characteristics of
21 such a secondary risk population.

22 In an analysis of the ROC curves comparing the GRS to plasma Lp(a), there was no
23 significant difference in the predictive power for prevalent CAVD, which was relatively
24 limited on an individual basis. The GRS is still relatively novel and our study is, to our

1 knowledge, only the second study to validate its use for predicting CAVD (15). Utilization of
2 genetic data instead of the Lp(a) assay can be advantageous by reducing measurement error
3 and variation between studies due to the assay used, rather than characteristics of the cohort
4 driving variation. Though we note our GRS performed worse than other studies for predicting
5 “true” Lp(a); 45% of the variation was captured by the GRS, compared with 53-61% in other
6 cohorts (4, 12), there was no significant difference between Lp(a) and the GRS for predicting
7 prevalent CAVD. This suggests that although the GRS predicted only 45% of the variation in
8 measured Lp(a), it shows promise as a surrogate for Lp(a) population analysis. The Bland-
9 Altman plot (**Figure 4**) suggests that GRS is unlikely to be accurate enough to predict
10 measured Lp(a) on an individual basis. However, further variants associated with Lp(a)
11 concentration have been identified, which presents the possibility to iteratively improve the
12 GRS (33).

13

14 Our study also examined if plasma Lp(a) or a Lp(a) GRS could be used to predict MACE at
15 seven years follow-up. Plasma Lp(a) was not associated with either seven year incident
16 MACE as a binary outcome or time to incident MACE. This conflicts with the results of
17 other studies in this field (12), and we suspect this is due to a degree of ascertainment bias; as
18 the population assessed was a group with a relatively high burden of cardiovascular disease,
19 the information conveyed by Lp(a) might have been attenuated by the information contained
20 in coronary artery assessment. Although a GRS cut-off value of 54.4 was associated with
21 seven year MACE and time to MACE, this association was small and became insignificant
22 once coronary disease status was taken into account. It was also not associated with seven
23 year MACE or time to MACE as a continuous variable. This is to say that, if the coronary
24 disease status is known, the GRS does not appear to provide any additional information for
25 risk prediction. If the coronary disease status is unknown, the GRS may represent a

1 statistically significant risk estimate, however, due to its small effect size it appears unlikely
2 to be a clinically useful MACE risk marker. This suggests that the effect of Lp(a) on MACE
3 is primarily mediated through its effect on incident coronary artery disease.

4

5 There are several strengths to our study. Firstly, this cohort had a very high participation rate
6 and a very low loss to follow-up. Secondly, the plasma Lp(a) assay used was a isoform size-
7 insensitive molar assay, which is more likely to accurately reflect Lp(a) levels than other
8 size-dependent assays. Thirdly, New Zealand has a well-established public healthcare system
9 with very few procedures or events occurring in the private setting, meaning that there is a
10 low chance of unrecorded events during follow-up.

11

12 There is now a small but consistently statistically significant body of work associating
13 elevated circulating Lp(a) with prevalent CAVD, with several studies also supporting a
14 relationship with incident CAVD. The predicted increase in CAVD burden globally (34),
15 given that the only effective treatment is valve replacement late in the disease process, means
16 that a search for preventative or mitigatory therapies is paramount. Lp(a) has been identified
17 as a treatment target for the prevention of cardiovascular events in several clinical trials (35-
18 38), and it is plausible that it could be a target for the prevention of CAVD as well, given its
19 implication in the pathophysiology of CAVD (39). However, no trial has been undertaken to
20 evaluate if Lp(a) lowering therapies could reduce the risk of incident CAVD, and such a trial
21 would be costly and require lengthy follow-up times. The disease process for CAVD is slow,
22 beginning with sclerotic valvular disease that may take many decades before progression to
23 calcification. It is unclear what proportion of those with sclerosis will go on to develop aortic
24 stenosis, and over what time frame. As discussed in the background, we have only been able

1 to identify two studies that examine the progression of sclerosis to more advanced
2 calcification (40, 41). Furthermore, most cases of CAVD are asymptomatic, and such a trial
3 would require regular echocardiographic screening of all participants. Coupled with the
4 relatively low incidence rates of CAVD in the general population (5, 42-44), such a trial
5 would be difficult to accomplish.

6 Our study is not without limitations, however. As previously discussed, this was a secondary
7 risk cohort of participants undergoing coronary angiography, and the results here are not
8 necessarily applicable to the general population. Our cohort had 40 of the 43 SNPs used for
9 the original genetic risk score by Burgess *et al*, but we do not expect this to appreciably alter
10 the final score in our cohort. The three absent SNPs would likely explain only an additional
11 1-2% of variation (Figure 12), which would be unlikely to significantly alter our results.

12

13 Conclusion

14 An *LPA* genetic risk score can explain 45% of the variation in lipoprotein(a) levels. Both
15 Lp(a) and an *LPA* genetic risk score are associated with the presence of CAVD. An elevated
16 GRS appears to be associated with future cardiac events in a secondary risk setting, but if the
17 coronary artery disease status is known it does not appear to provide additional prognostic
18 information. The GRS may be useful in evaluating population-level associations between
19 Lp(a) and cardiovascular and valve-related outcomes, especially in groups where the
20 coronary artery disease status is unknown.

21 Funding sources

22 This work was supported in part by grants from the Health Research Council of New Zealand
23 (14/155, 17/402, 20/144) and Genomics Aotearoa (a New Zealand Ministry of Business,

- 1 Innovation and Employment funded research platform). MKM was supported by the New
- 2 Zealand Heart Foundation and the E & W White Parsons Charitable Trust.
- 3 Disclosures
- 4 The authors have no conflicts of interest to declare.

1 References

- 2 1. Virani SS, Alonso A, Aparicio HJ, Benjamin EJ, Bittencourt MS, Callaway CW, et al.
3 Heart Disease and Stroke Statistics-2021 Update: A Report From the American Heart
4 Association. *Circulation*. 2021;143(8):e254-e743.
- 5 2. Stewart BF, Siscovick D, Lind BK, Gardin JM, Gottdiener JS, Smith VE, et al.
6 Clinical factors associated with calcific aortic valve disease. *Cardiovascular Health Study*. *J*
7 *Am Coll Cardiol*. 1997;29(3):630-4.
- 8 3. Owens DS, Katz R, Takasu J, Kronmal R, Budoff MJ, O'Brien KD. Incidence and
9 progression of aortic valve calcium in the Multi-ethnic Study of Atherosclerosis (MESA).
10 *Am J Cardiol*. 2010;105(5):701-8.
- 11 4. Katsi V, Georgiopoulos G, Oikonomou D, Aggeli C, Grassos C, Papadopoulos DP, et
12 al. Aortic Stenosis, Aortic Regurgitation and Arterial Hypertension. *Curr Vasc Pharmacol*.
13 2019;17(2):180-90.
- 14 5. Kaltoft M, Langsted A, Nordestgaard BG. Obesity as a Causal Risk Factor for Aortic
15 Valve Stenosis. *J Am Coll Cardiol*. 2020;75(2):163-76.
- 16 6. Larsson SC, Wallin A, Hakansson N, Stackelberg O, Back M, Wolk A. Type 1 and
17 type 2 diabetes mellitus and incidence of seven cardiovascular diseases. *Int J Cardiol*.
18 2018;262:66-70.
- 19 7. Wald DS, Bestwick JP. Association between serum calcium, serum phosphate and
20 aortic stenosis with implications for prevention. *Eur J Prev Cardiol*. 2018;25(5):551-6.
- 21 8. Kaltoft M, Langsted A, Afzal S, Kamstrup PR, Nordestgaard BG. Lipoprotein(a) and
22 Body Mass Compound the Risk of Calcific Aortic Valve Disease. *J Am Coll Cardiol*.
23 2022;79(6):545-58.
- 24 9. Wodaje T, Littmann K, Habel H, Bottai M, Back M, Parini P, et al. Plasma
25 Lipoprotein(a) measured in routine clinical care and the association with incident calcified
26 aortic valve stenosis during a 14-year observational period. *Atherosclerosis*. 2022.
- 27 10. Kamstrup PR, Tybjaerg-Hansen A, Nordestgaard BG. Elevated lipoprotein(a) and risk
28 of aortic valve stenosis in the general population. *J Am Coll Cardiol*. 2014;63(5):470-7.
- 29 11. Arsenault BJ, Boekholdt SM, Dube MP, Rheume E, Wareham NJ, Khaw KT, et al.
30 Lipoprotein(a) levels, genotype, and incident aortic valve stenosis: a prospective Mendelian
31 randomization study and replication in a case-control cohort. *Circ Cardiovasc Genet*.
32 2014;7(3):304-10.
- 33 12. Emerging Risk Factors C, Erqou S, Kaptoge S, Perry PL, Di Angelantonio E,
34 Thompson A, et al. Lipoprotein(a) concentration and the risk of coronary heart disease,
35 stroke, and nonvascular mortality. *JAMA*. 2009;302(4):412-23.
- 36 13. Kronenberg F, Mora S, Stroes ESG, Ference BA, Arsenault BJ, Berglund L, et al.
37 Lipoprotein(a) in atherosclerotic cardiovascular disease and aortic stenosis: a European
38 Atherosclerosis Society consensus statement. *Eur Heart J*. 2022;43(39):3925-46.
- 39 14. Burgess S, Ference BA, Staley JR, Freitag DF, Mason AM, Nielsen SF, et al.
40 Association of LPA Variants With Risk of Coronary Disease and the Implications for
41 Lipoprotein(a)-Lowering Therapies: A Mendelian Randomization Analysis. *JAMA Cardiol*.
42 2018;3(7):619-27.
- 43 15. Larsson SC, Gill D, Mason AM, Jiang T, Back M, Butterworth AS, et al.
44 Lipoprotein(a) in Alzheimer, Atherosclerotic, Cerebrovascular, Thrombotic, and Valvular
45 Disease: Mendelian Randomization Investigation. *Circulation*. 2020;141(22):1826-8.
- 46 16. Scharnagl H, Stojakovic T, Dieplinger B, Dieplinger H, Erhart G, Kostner GM, et al.
47 Comparison of lipoprotein (a) serum concentrations measured by six commercially available
48 immunoassays. *Atherosclerosis*. 2019;289:206-13.

- 1 17. Kronenberg F. Human Genetics and the Causal Role of Lipoprotein(a) for Various
2 Diseases. *Cardiovasc Drugs Ther.* 2016;30(1):87-100.
- 3 18. Jones GT, Hill BG, Curtis N, Kabir TD, Wong LE, Tilyard MW, et al. Comparison of
4 three targeted approaches to screening for abdominal aortic aneurysm based on
5 cardiovascular risk. *Br J Surg.* 2016;103(9):1139-46.
- 6 19. Hicks KA, Mahaffey KW, Mehran R, Nissen SE, Wiviott SD, Dunn B, et al. 2017
7 Cardiovascular and Stroke Endpoint Definitions for Clinical Trials. *J Am Coll Cardiol.*
8 2018;71(9):1021-34.
- 9 20. Jones GT, Marsman J, Bhat B, Phillips VL, Chatterjee A, Rodger EJ, et al. DNA
10 methylation profiling identifies a high effect genetic variant for lipoprotein(a) levels.
11 *Epigenetics.* 2020;15(9):949-58.
- 12 21. Trinder M, Uddin MM, Finneran P, Aragam KG, Natarajan P. Clinical Utility of
13 Lipoprotein(a) and LPA Genetic Risk Score in Risk Prediction of Incident Atherosclerotic
14 Cardiovascular Disease. *JAMA Cardiol.* 2020.
- 15 22. Harris PA, Taylor R, Minor BL, Elliott V, Fernandez M, O'Neal L, et al. The
16 REDCap consortium: Building an international community of software platform partners. *J*
17 *Biomed Inform.* 2019;95:103208.
- 18 23. Harris PA, Taylor R, Thielke R, Payne J, Gonzalez N, Conde JG. Research electronic
19 data capture (REDCap)--a metadata-driven methodology and workflow process for providing
20 translational research informatics support. *J Biomed Inform.* 2009;42(2):377-81.
- 21 24. R Core Team. R: A Language and Environment for Statistical Computing. Vienna,
22 Austria: R Foundation for Statistical Computing; 2020.
- 23 25. Kassambara A, Kosinski M, Biecek P. *survminer: Drawing Survival Curves using*
24 *'ggplot2'*. 2021.
- 25 26. Wickham H, Averick M, Bryan J, Chang W, McGowan LDA, François R, et al.
26 Welcome to the tidyverse. *Journal of Open Source Software.* 2019;4:1686.
- 27 27. Yeang C, Karwatowska-Prokopczuk E, Su F, Dinh B, Xia S, Witztum JL, et al. Effect
28 of Pelacarsen on Lipoprotein(a) Cholesterol and Corrected Low-Density Lipoprotein
29 Cholesterol. *J Am Coll Cardiol.* 2022;79(11):1035-46.
- 30 28. Cao J, Steffen BT, Budoff M, Post WS, Thanassoulis G, Kestenbaum B, et al.
31 Lipoprotein(a) Levels Are Associated With Subclinical Calcific Aortic Valve Disease in
32 White and Black Individuals: The Multi-Ethnic Study of Atherosclerosis. *Arterioscler*
33 *Thromb Vasc Biol.* 2016;36(5):1003-9.
- 34 29. Kaiser Y, Singh SS, Zheng KH, Verbeek R, Kavousi M, Pinto SJ, et al.
35 Lipoprotein(a) is robustly associated with aortic valve calcium. *Heart.* 2021;107(17):1422-8.
- 36 30. Kamstrup PR, Tybjaerg-Hansen A, Nordestgaard BG. Extreme lipoprotein(a) levels
37 and improved cardiovascular risk prediction. *J Am Coll Cardiol.* 2013;61(11):1146-56.
- 38 31. Waissi F, Dekker M, Timmerman N, Hoogeveen RM, van Bennekom J, Dzobo KE, et
39 al. Elevated Lp(a) (Lipoprotein[a]) Levels Increase Risk of 30-Day Major Adverse
40 Cardiovascular Events in Patients Following Carotid Endarterectomy. *Stroke.*
41 2020;51(10):2972-82.
- 42 32. Tsimikas S, Fazio S, Viney NJ, Xia S, Witztum JL, Marcovina SM. Relationship of
43 lipoprotein(a) molar concentrations and mass according to lipoprotein(a) thresholds and
44 apolipoprotein(a) isoform size. *J Clin Lipidol.* 2018;12(5):1313-23.
- 45 33. Schachtl-Riess JF, Kheirkhah A, Gruneis R, Di Maio S, Schoenherr S, Streiter G, et
46 al. Frequent LPA KIV-2 Variants Lower Lipoprotein(a) Concentrations and Protect Against
47 Coronary Artery Disease. *J Am Coll Cardiol.* 2021;78(5):437-49.
- 48 34. Coffey S, Cairns BJ, Iung B. The modern epidemiology of heart valve disease. *Heart.*
49 2016;102(1):75-85.

- 1 35. Investigators A-H, Boden WE, Probstfield JL, Anderson T, Chaitman BR, Desvignes-
2 Nickens P, et al. Niacin in patients with low HDL cholesterol levels receiving intensive statin
3 therapy. *N Engl J Med*. 2011;365(24):2255-67.
- 4 36. Group HTC, Landray MJ, Haynes R, Hopewell JC, Parish S, Aung T, et al. Effects of
5 extended-release niacin with laropiprant in high-risk patients. *N Engl J Med*.
6 2014;371(3):203-12.
- 7 37. O'Donoghue ML, Fazio S, Giugliano RP, Stroes ESG, Kanevsky E, Gouni-Berthold I,
8 et al. Lipoprotein(a), PCSK9 Inhibition, and Cardiovascular Risk. *Circulation*.
9 2019;139(12):1483-92.
- 10 38. Szarek M, Bittner VA, Aylward P, Baccara-Dinet M, Bhatt DL, Diaz R, et al.
11 Lipoprotein(a) lowering by alirocumab reduces the total burden of cardiovascular events
12 independent of low-density lipoprotein cholesterol lowering: ODYSSEY OUTCOMES trial.
13 *Eur Heart J*. 2020;41(44):4245-55.
- 14 39. Hsieh G, Rizk T, Berman AN, Biery DW, Blankstein R. The current landscape of
15 lipoprotein(a) in calcific aortic valvular disease. *Curr Opin Cardiol*. 2021;36(5):542-8.
- 16 40. Messika-Zeitoun D, Bielak LF, Peyser PA, Sheedy PF, Turner ST, Nkomo VT, et al.
17 Aortic valve calcification: determinants and progression in the population. *Arterioscler*
18 *Thromb Vasc Biol*. 2007;27(3):642-8.
- 19 41. Novaro GM, Katz R, Aviles RJ, Gottdiener JS, Cushman M, Psaty BM, et al. Clinical
20 factors, but not C-reactive protein, predict progression of calcific aortic-valve disease: the
21 Cardiovascular Health Study. *J Am Coll Cardiol*. 2007;50(20):1992-8.
- 22 42. Eveborn GW, Schirmer H, Heggelund G, Lunde P, Rasmussen K. The evolving
23 epidemiology of valvular aortic stenosis. the Tromso study. *Heart*. 2013;99(6):396-400.
- 24 43. Andell P, Li X, Martinsson A, Andersson C, Stagmo M, Zoller B, et al. Epidemiology
25 of valvular heart disease in a Swedish nationwide hospital-based register study. *Heart*.
26 2017;103(21):1696-703.
- 27 44. Yan AT, Koh M, Chan KK, Guo H, Alter DA, Austin PC, et al. Association Between
28 Cardiovascular Risk Factors and Aortic Stenosis: The CANHEART Aortic Stenosis Study. *J*
29 *Am Coll Cardiol*. 2017;69(12):1523-32.

30

31

1 Tables

	Female (n=278)	Male (n=479)	Overall (n=757)
Age, years	69.6 (10.5)	68.1 (10.5)	68.7 (10.6)
Ethnicity			
European	246 (88.5)	433 (90.4)	679 (89.7)
Māori	16 (5.8)	23 (4.8)	39 (5.2)
Pacific Peoples	4 (1.4)	2 (0.4)	6 (0.8)
Other ethnicity	12 (4.3)	21 (4.4)	33 (4.4)
Body mass index	28.9 (6.47)	28.9 (5.05)	28.9 (5.61)
Smoking status			
Never smoked	148 (53.2)	168 (35.1)	316 (41.7)
Ex smoker	96 (34.5)	251 (52.4)	347 (45.8)
Current smoker	34 (12.2)	60 (12.5)	94 (12.4)
Indication for angiography			
Acute coronary syndrome	132 (47.5)	252 (52.6)	384 (50.7)
Stable angina	90 (32.4)	147 (30.7)	237 (31.3)
Other	56 (20.1)	80 (16.7)	136 (18.0)
Dyslipidaemia (Yes)	201 (72.3)	357 (74.5)	558 (73.7)
Hypertension (Yes)	225 (80.9)	340 (71.0)	565 (74.6)
Diabetes (Yes)	70 (25.2)	121 (25.3)	191 (25.2)
Coronary artery disease			
None	85 (30.6)	77 (16.1)	162 (21.4)
Non-obstructive	44 (15.8)	61 (12.7)	105 (13.9)

Obstructive	149 (53.6)	341 (71.2)	490 (64.7)
Calcific Aortic valve disease			
None	167 (60.1)	283 (59.1)	450 (59.4)
Early	89 (32.0)	148 (30.9)	237 (31.3)
Late	22 (7.9)	48 (10.0)	70 (9.2)

Table 1: Demographics and clinical profile of the initial cohort with known native aortic valve status. Numeric variables presented as mean (standard deviation), categorical with percentages in brackets.

1

2

1

	Odds ratio for plasma Lp(a) per 10 nmol/L increase	P value	
Univariate	1.026 (95% CI 1.011-1.042)	<0.001	
Adjusted model 1*	1.038 (95% CI 1.020-1.056)	<0.001	
Adjusted model 2**	1.039 (95% CI 1.022-1.057)	<0.001	

Table 2: Logistic regression model for (any) CAVD per 10 nmol/L increase in plasma Lp(a)
* Adjusted for age, sex, BMI, dyslipidaemia, diabetes, hypertension, and smoking status
** Forward stepwise regression model adjusting for age, sex, BMI, dyslipidaemia, diabetes, hypertension, smoking status, stroke, and coronary disease classification

2

3

1

	Odds ratio for GRS ≥ 34.4	P value	
Univariate	1.778 (95% CI 1.293-2.446)	<0.001	
Adjusted model 1*	1.963 (95%CI 1.380-2.803)	<0.001	
Adjusted model 2**	2.002 (95% CI 1.402-2.869)	<0.001	

Table 3: Logistic regression model for CAVD, for GRS greater than 34.4.

* Adjusted for age, sex, BMI, dyslipidaemia, diabetes, hypertension, and smoking status

** Forward stepwise regression model adjusting for age, sex, BMI, dyslipidaemia, diabetes, hypertension, smoking status, stroke, and coronary disease classification

2

3

1

	Odds ratio for GRS ≥ 54	P value	
Univariate	1.478 (95% CI 1.044-2.121)	0.024	
Adjusted model 1*	1.489 (95% CI 1.044-2.121)	0.027	
Adjusted model 2**	1.333 (95% CI 0.927-1.912)	0.119	

Table 4: Logistic regression model for seven-year MACE, for GRS greater than 54.

* Adjusted – age, sex, BMI, dyslipidaemia, diabetes, hypertension, and smoking status

** Adjusted – as above + coronary disease classification

2

3

1 Figures with figure legends

2

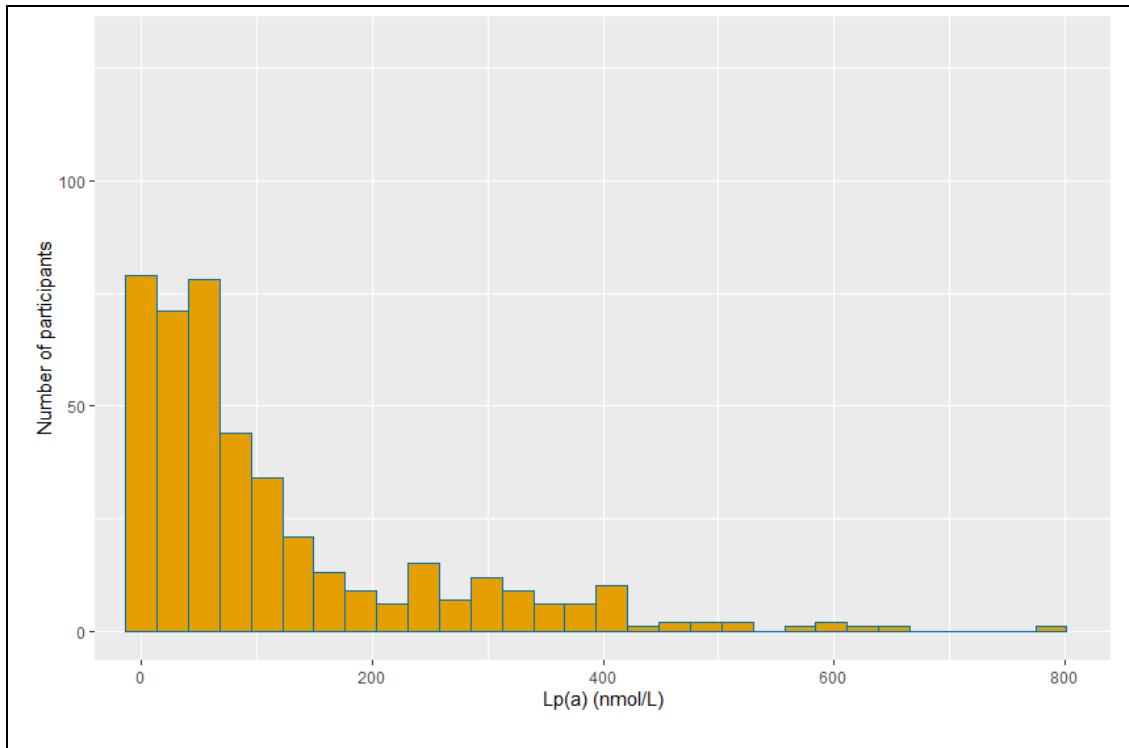
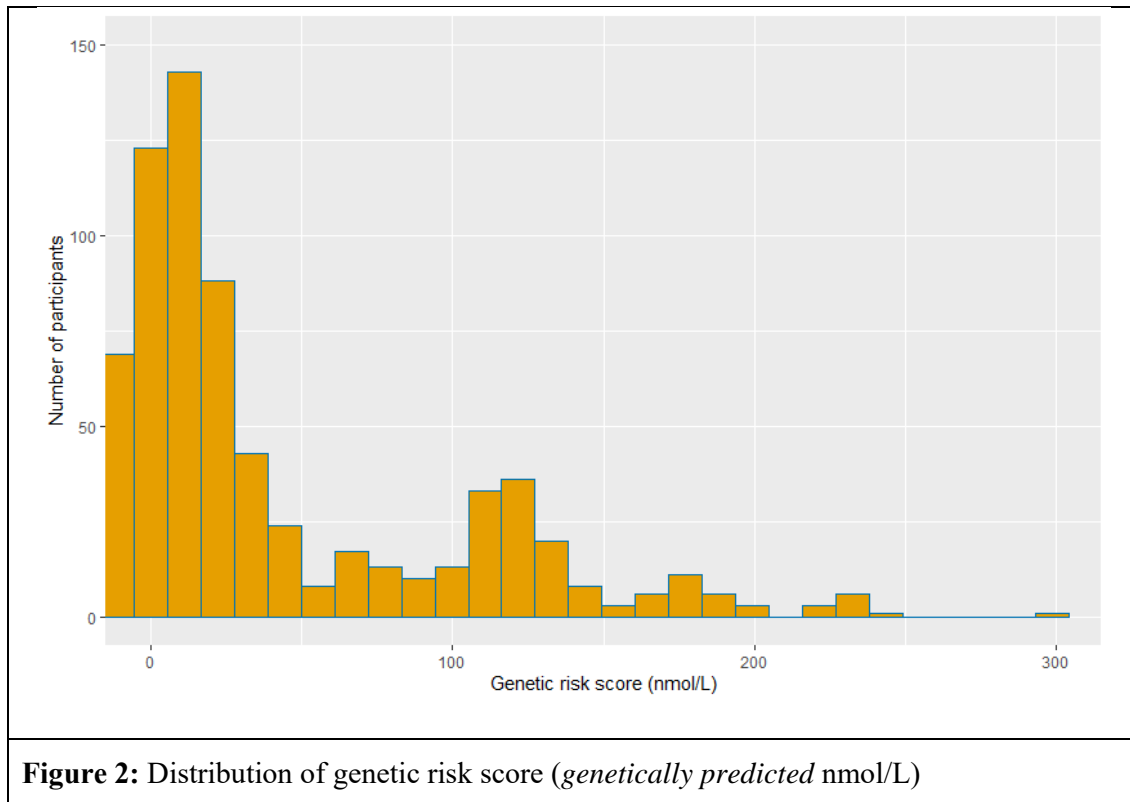


Figure 1: Distribution of measured plasma Lp(a) (nmol/L)

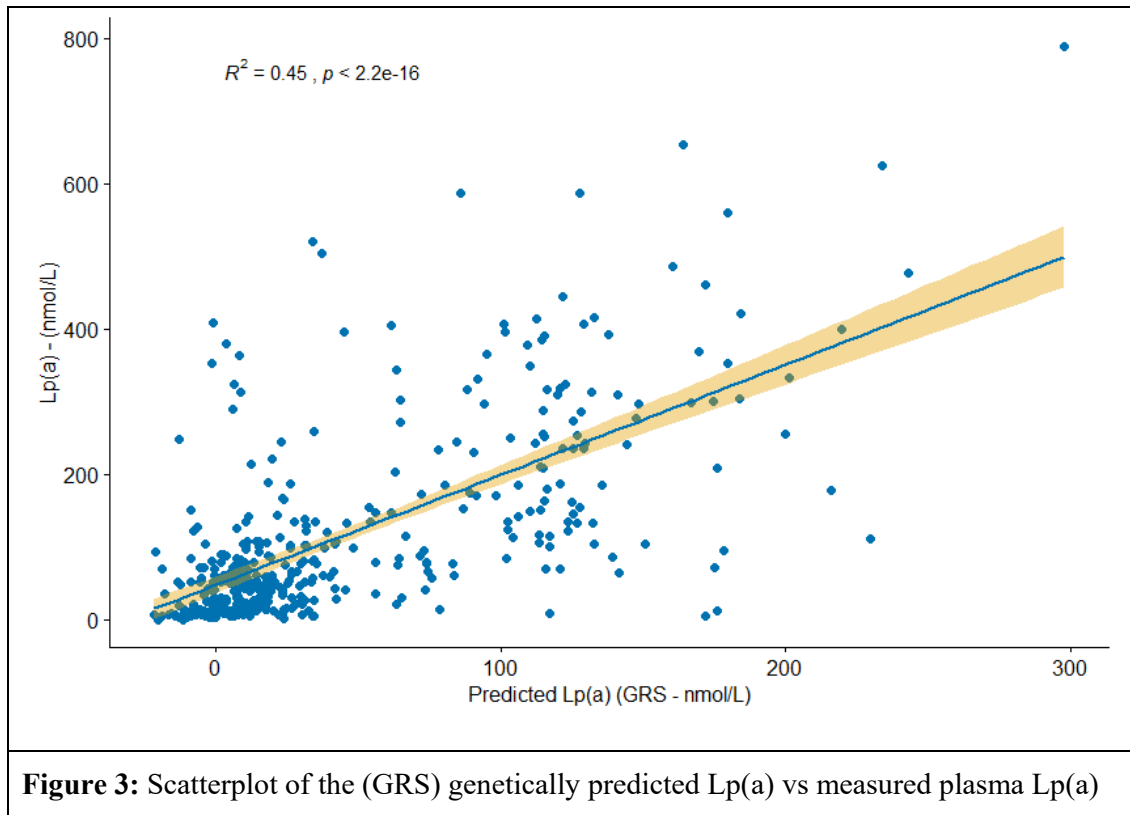
3



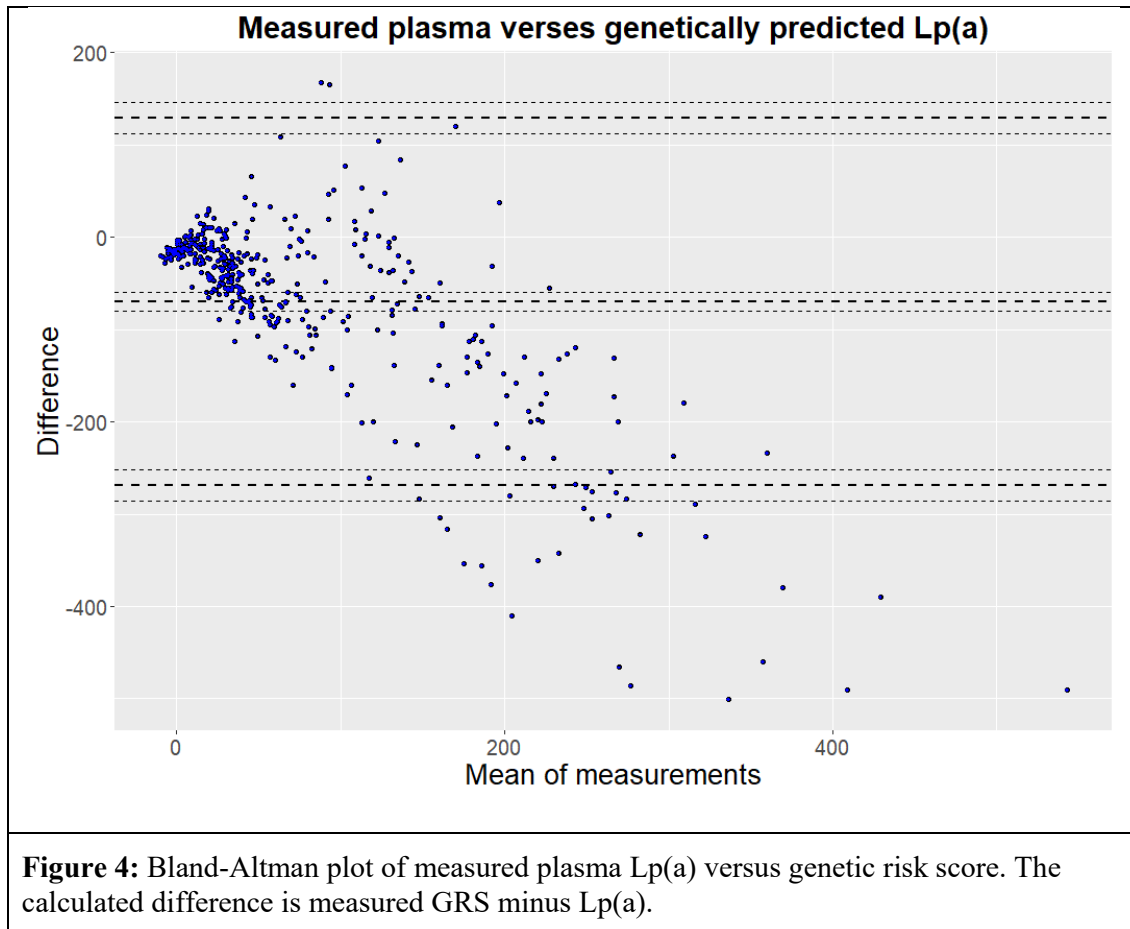
1

2

1



2



1

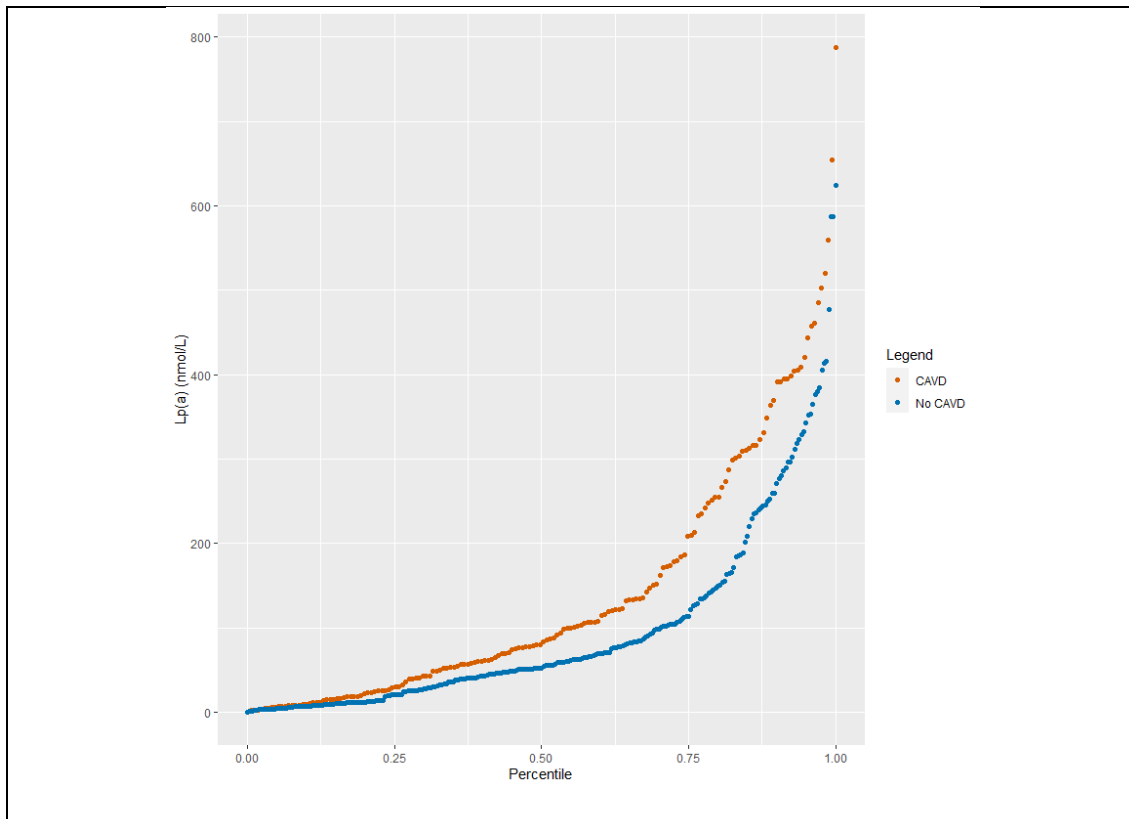


Figure 5: Percentiles plot of measured plasma Lp(a) stratified by CAVD status

1
2

1

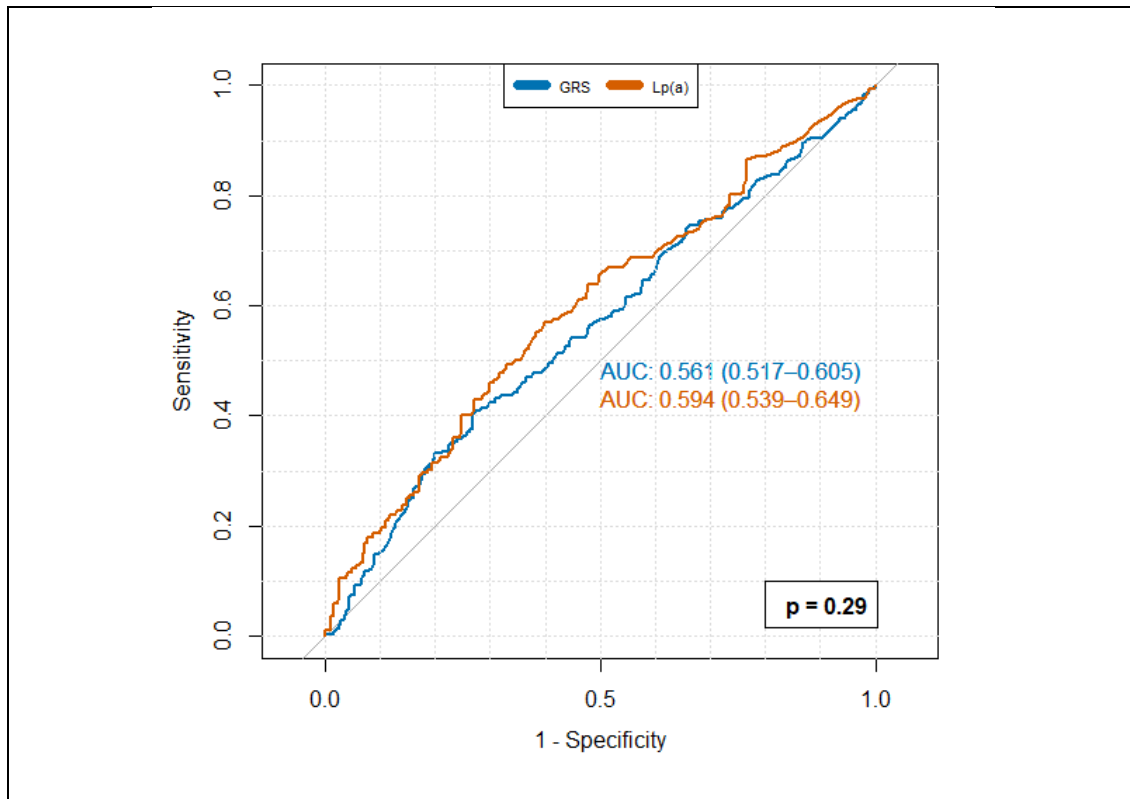
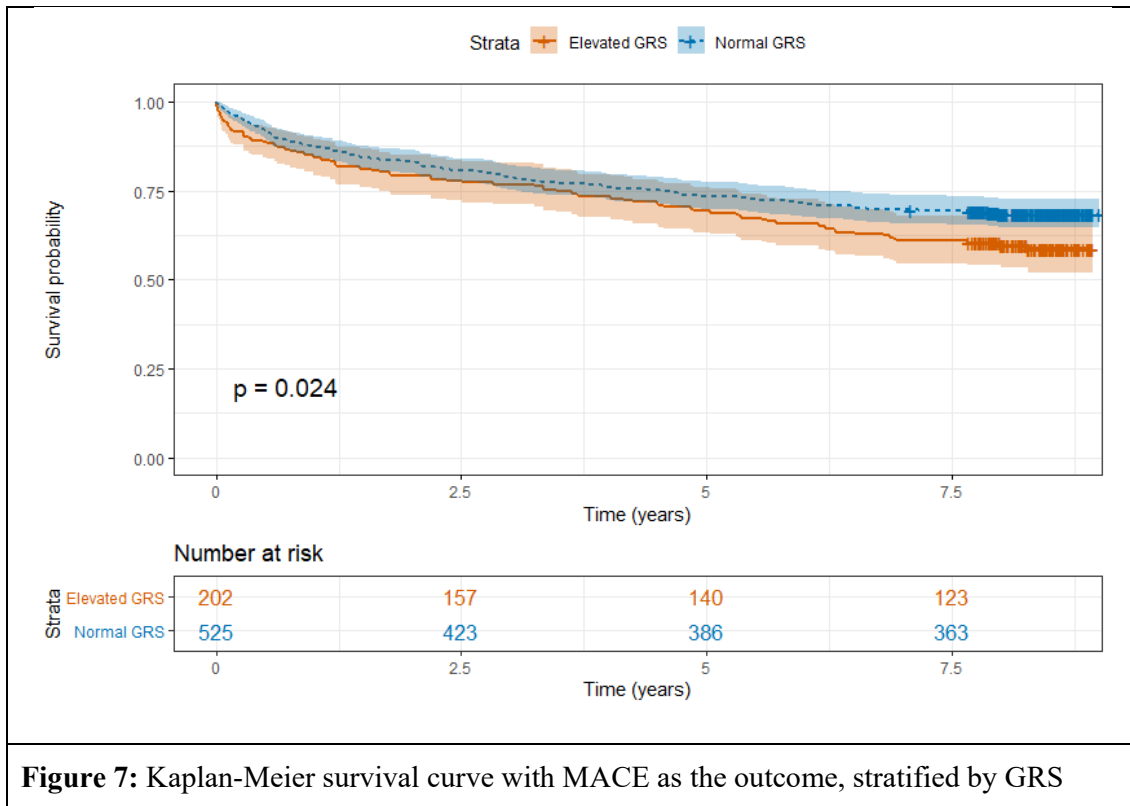


Figure 6: Receiver operating characteristic (ROC) curves for respective plasma Lp(a) and the GRS associations with (any) CAVD status. The difference between the two Lp(a) values was not significant (DeLong test p-value 0.29).

2



1

2

1

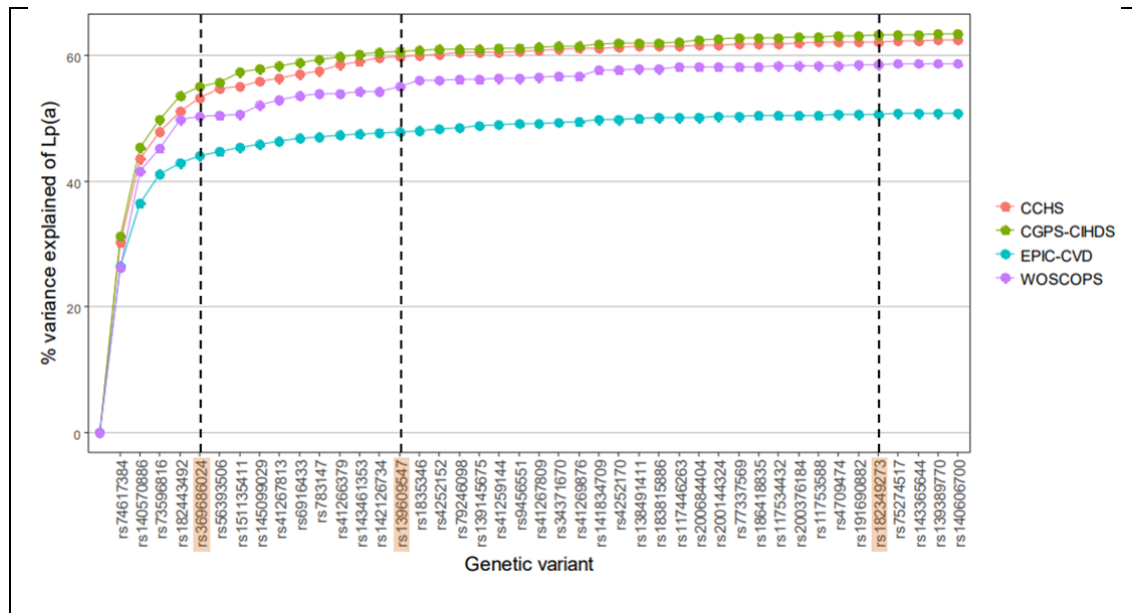


Figure 8: Variance of Lp(a) explained by each additional variant in each study. Modified from eFigure 5, Burgess *et al* 2018, JAMA Cardiol. (14)

Highlighted SNPs were absent from our cohort.

2

3

- 1 Supplemental material (see separate file)
- 2 Tables S1-S2
- 3 Figure S1