

1 A novel framework for assessing causal effect of  
2 microbiome on health: long-term antibiotic usage  
3 as an instrument

4 Nele Taba<sup>1</sup>, Krista Fischer<sup>1,2</sup>, Estonian Biobank research team<sup>1</sup>, Elin Org<sup>1\*#</sup> & Oliver  
5 Aasmets<sup>1\*#</sup>

6

7 Affiliations

8 <sup>1</sup> Estonian Genome Center, Institute of Genomics, University of Tartu, Tartu, Estonia

9 <sup>2</sup> Institute of Mathematics and Statistics, Faculty of Science and Technology, University of Tartu, Tartu,  
10 Estonia

11

12 Collaborators

13 Estonian Biobank research team: Mait Metspalu, Andres Metspalu, Lili Milani, Tõnu Esko

14

15

16

17

18 \*These authors contributed equally: Elin Org & Oliver Aasmets

19 #Corresponding authors: Elin Org & Oliver Aasmets

20 Institute of Genomics, Estonian Genome Centre

21 University of Tartu

22 Tartu 51010, Estonia

23 phone: (372) 737 4034; fax: (372) 737 4060

24 Email: [elin.org@ut.ee](mailto:elin.org@ut.ee), [oliver.aasmets@ut.ee](mailto:oliver.aasmets@ut.ee)

25

26

27 Keywords: gut microbiome, electronic health registries, antibiotics, causal inference

28 Word count: 4731

29 Number of Figures: 3

## 30 Abstract

31 Assessing causality is undoubtedly one of the key questions in microbiome studies for the  
32 upcoming years. Since randomised trials in human subjects are often unethical or difficult to  
33 pursue, analytical methods to derive causal effects from observational data deserve attention.  
34 As simple covariate adjustment is not likely to account for all potential confounders, the idea  
35 of instrumental variable (IV) analysis is worth exploiting. Here we propose a novel framework  
36 of antibiotic instrumental variable regression (AB-IVR) for estimating the causal relationships  
37 between microbiome and various diseases. We rely on the recent studies showing that  
38 antibiotic treatment has a cumulative long-term effect on the microbiome, resulting in  
39 individuals with higher antibiotic usage to have a more perturbed microbiome. We apply the  
40 AB-IVR method on the Estonian Biobank data and show that the microbiome has a causal  
41 role in numerous diseases including migraine, depression and irritable bowel syndrome. We  
42 show with a plethora of sensitivity analyses that the identified causal effects are robust, and  
43 propose ways for further methodological developments.

## 44 Introduction

45 Human microbiome studies have demonstrated that the gut microbiome can be affected by  
46 various exposures such as diet and medications<sup>1,2</sup> and changes in the gut microbiome  
47 composition have been associated with the prevalence or susceptibility to complex diseases  
48 such as type 2 diabetes<sup>3-5</sup>, Crohn's disease<sup>6</sup> and different cancers<sup>7,8</sup>. However, with the  
49 primary interest in disease associations, determining the causal effects has remained  
50 challenging, as there are several potential confounders (dietary choices, other behavioural  
51 and environmental exposures) that may affect microbiome and their disease outcomes via  
52 different pathways. Experimental studies, such as utilising faecal microbiota transplantation,  
53 have proven a causal mechanistic link between treatment, microbiome and health<sup>9</sup>, but to date  
54 the methods for determining such causal associations noninvasively are limited<sup>10</sup>. An  
55 alternative would be to attempt causal effect estimation based on observational cohort data -  
56 using Instrumental Variable (IV) method to avoid biases due to unobserved confounding. One  
57 example of such an approach is Mendelian Randomization (MR), where a genetic variable  
58 acts as an instrument (affecting only the exposure variables, thus microbiota, but not directly  
59 the outcome or the confounders). Successful examples include studies that have shown the  
60 causal role of several taxa on cancers<sup>11</sup>, inflammatory bowel diseases<sup>12</sup> and depression<sup>13</sup>.  
61 However, MR is limited by the lack of valid genetic instruments - this might remain an issue  
62 even with larger sample sizes, since microbiome is shown to be with low heritability<sup>14,15</sup>. To fill  
63 this void, we propose a new analytical approach to assess the causal role of microbiome on

64 health: antibiotic instrumental variable regression (AB-IVR), using the long-term history of  
65 antibiotic usage (hAB) as an instrument.

66 Antibiotic (AB) usage is shown to affect microbiome in the long term in a cumulative manner,  
67 whereby larger number of antibiotics prescribed in the past results in a more perturbed  
68 microbiome composition<sup>2,16</sup>. This means that there are on average consistent differences in  
69 microbiome between the individuals with higher and lower long-term antibiotics usage.  
70 Importantly, this long-term usage effect is already evident in subjects who have taken only 3-  
71 5 courses of AB in the last 10 years before the sample collection. Such antibiotic consumption  
72 is highly common in the general population. This, and the fact that antibiotics are expected to  
73 affect health primarily via microbiome (directly eliminating the disease-causing bacteria, but  
74 also resulting in a general dysbiosis as a “collateral damage”) and not via any other pathways,  
75 made us ponder whether hAB - measured as number of antibiotics prescribed during 10 years  
76 prior to microbiome sampling - can serve as a natural experiment randomising individuals to  
77 have more or less perturbed microbiome. Thus, we propose that by using hAB as an  
78 instrument, we can compare the disease incidence between groups that have consistent long-  
79 term differences in microbiome, and by this assess the causal role of microbiome in disease.  
80 Of note, the primary focus of the AB-IVR method is on diseases, which itself are not treated  
81 with antibiotics. We consider the AB-IVR method as an intermediate option between the  
82 observational studies and randomised trials: we aim to gather more information compared to  
83 observational studies, but still do not see it as an equivalent alternative to the randomised  
84 trials.

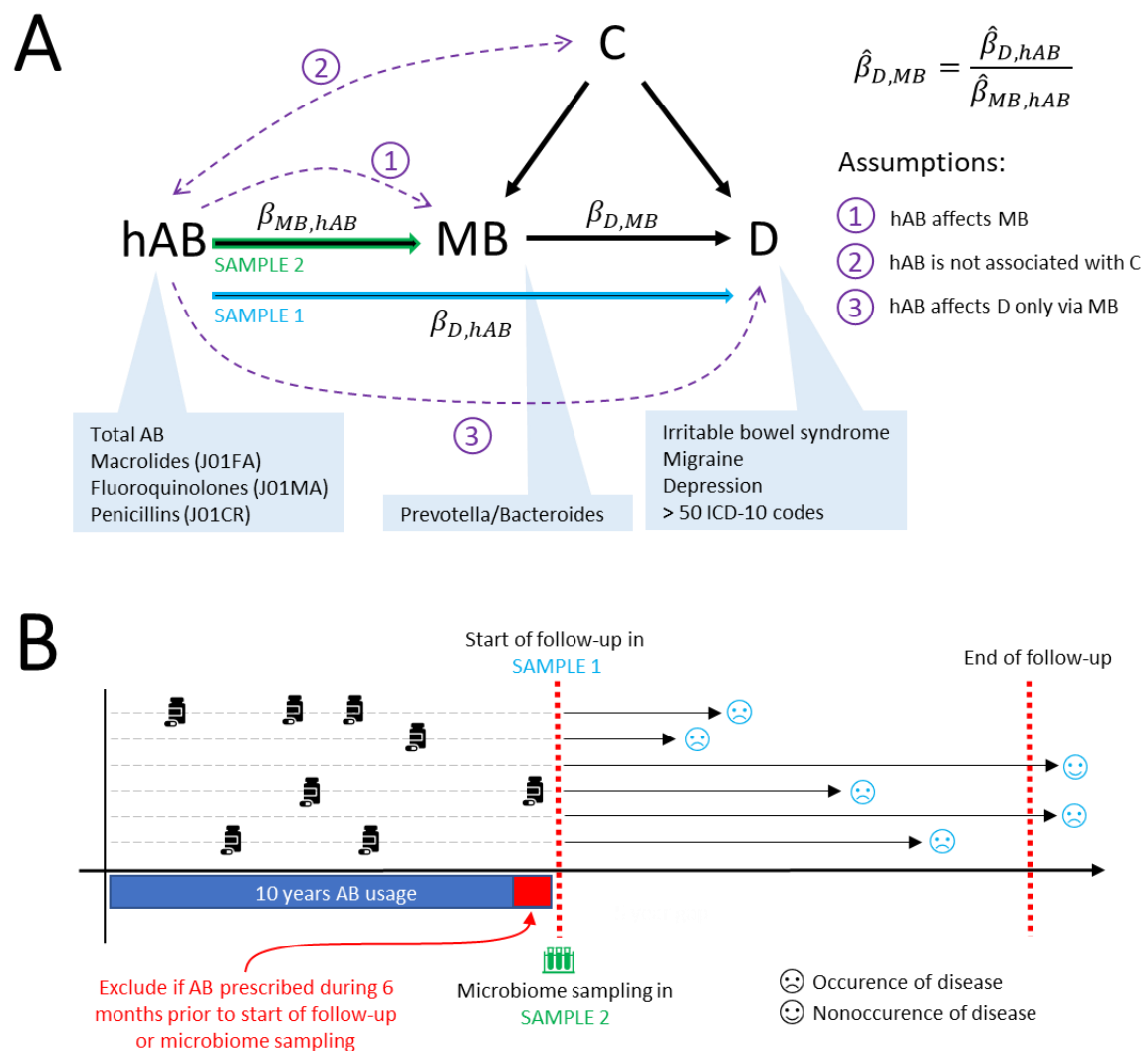
85 Next sections introduce the AB-IVR methodology and its usage on the Estonian Biobank  
86 samples. Firstly, we introduce the method as a Two-Sample Two-Stage Least Squares  
87 (TSTSLS) procedure and the corresponding sample sets that we utilise for estimating the  
88 causal effects. Next, we introduce the concept of long-term antibiotics usage as an instrument.  
89 We discuss model assumptions and limitations that can bias the results such as the scope of  
90 the estimable effects, feedback loops arising from the bidirectional microbiome-disease  
91 crosstalk and effects of general health behaviour. Lastly, we assess the causal role of  
92 microbiome in several common diseases, test the validity of the findings through a series of  
93 sensitivity analyses and give insights for future developments. The AB-IVR method showed  
94 that microbiome has a causal effect for several common diseases such as irritable bowel  
95 syndrome, migraine and depression, and we believe that it opens up new possibilities for  
96 causal discovery in the human microbiome field.

## 97 Results

### 98 Study overview and data selection

99 For inferring the causal effect of microbiome on disease we utilised the method of Two-Sample  
100 Two-Stage Least Squares (TSTLS), which is a special case of instrumental variable  
101 regression. In our case, the history of antibiotics usage (hAB) serves as the instrumental  
102 variable, hence the term antibiotic instrumental variable regression, AB-IVR (**Fig. 1A**). The  
103 general idea of the method is that when AB usage cannot realistically have any direct effect  
104 on the disease of interest, the correlation of AB usage with the disease incidence can only  
105 arise via mediation by microbiome. Thus the total effect of hAB on the disease outcome can  
106 be decomposed into the effect of hAB on the microbiome and the causal effect of the  
107 microbiome on the outcome. As the total effect and the effect of hAB on the microbiome are  
108 estimable, also the causal effect of the microbiome becomes identifiable.

109 In our study, the TSTLS methodology relies on two independent datasets which are used for  
110 1) estimating the effect of hAB on disease ( $\beta_{D,hAB}$ ) and 2) estimating the effect of hAB on the  
111 microbiome ( $\beta_{MB,hAB}$ ). The two effects are combined to evaluate the causal effect of  
112 microbiome on disease ( $\beta_{D,MB}$ )(**Fig. 1A**). For estimating the effect of hAB on disease, we  
113 leveraged the electronic health records data available for the Estonian Biobank (EstBB)  
114 participants (N > 210 000)<sup>17</sup>. As prevalent diseases can have an effect on the microbiome and  
115 potentially create a feedback loop, which biases the results, we analysed the effect of previous  
116 antibiotics usage on the incident diseases instead (See Methods). To estimate the effect of  
117 hAB on the microbiome, we used Estonian Microbiome (EstMB, a subcohort of EstBB) cohort  
118 (N > 2500) samples with shotgun metagenomics data available<sup>2</sup>.



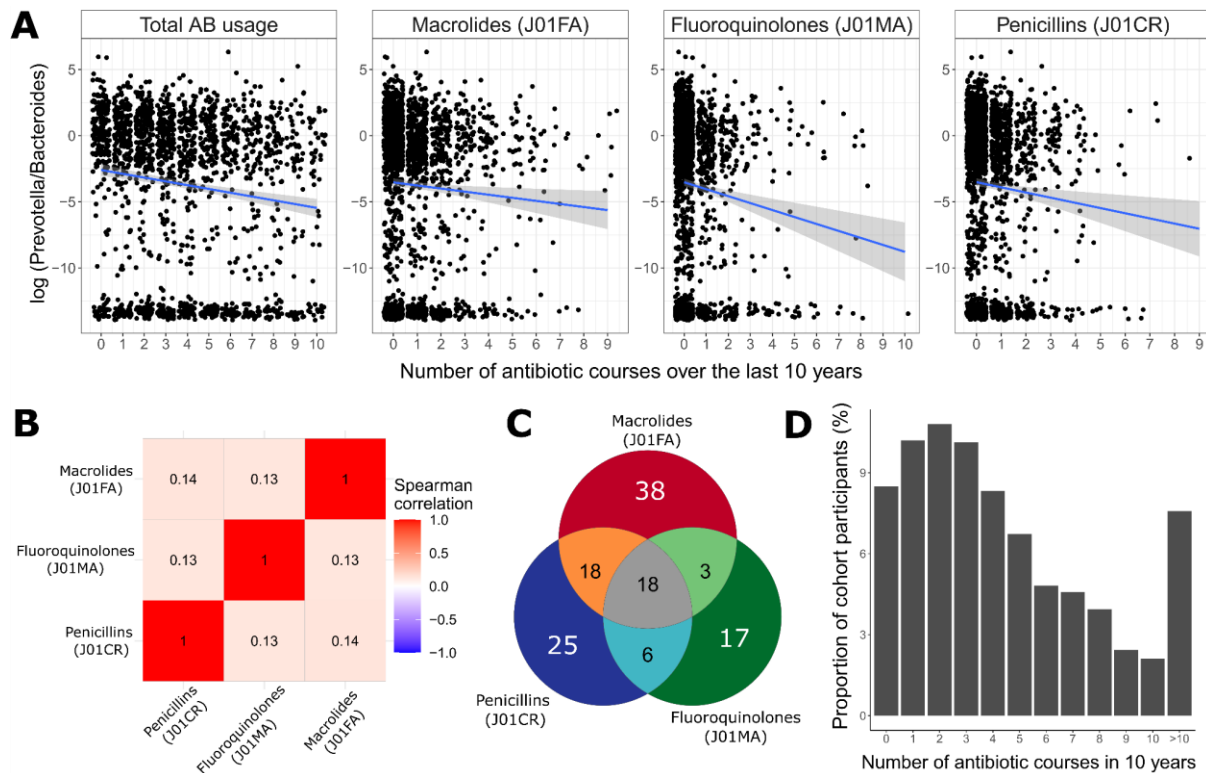
119

120 **Figure 1. Graphical description of the study design.** Upper panel (A) illustrates the instrumental  
 121 variable regression and corresponding assumptions schematically in the context of our study. hAB -  
 122 history of antibiotic usage; MB - microbiome; D - disease; C - confounder. Lower panel (B) illustrates  
 123 the samples and data used. Sample 1 refers to the sample where disease follow-up data is recorded,  
 124 EstBB in our case. Sample 2 refers to the sample where the microbiome is assessed, EstMB in our  
 125 case. We recorded the AB usage as the number of AB prescribed (total and AB subgroups) during the  
 126 10-year period preceding the start of follow up in Sample 1 and microbiome sampling in Sample 2,  
 127 whereas in both samples the individuals receiving AB during the last 6 months of the aforementioned  
 128 period are excluded. Sample 1 was followed up for incident outcomes of 56 common diseases from  
 129 01.01.2015 until 31.12.2022, whereafter observations are right censored irrespective of the future  
 130 outcomes. In Sample 2 the microbiome was assessed on an arbitrary moment between November 2017  
 131 to July 2020. The causal effect of MB on disease ( $\beta_{D,MB}$ ) in the two-sample setting is estimated as the  
 132 ratio of the effect of AB-usage on disease ( $\beta_{D,hAB}$ ) in Sample1 (EstBB) and the effect of AB-usage on  
 133 MB ( $\beta_{MB,hAB}$ ) in Sample2 (EstMB).

134 History of antibiotics usage as a valid instrument

135 Estimating the causal effects by instrumental variable regression analysis relies on several  
 136 assumptions. Firstly, the hAB must be associated with the gut microbiome (Fig. 1A). We and  
 137 others have previously shown that hAB is associated with the microbiome composition

138 additively, meaning that higher hAB is associated with larger changes in the microbiome  
 139 composition<sup>2,16</sup>. Here, we focused our analysis on the *Prevotella/Bacteroides* ratio (P/B ratio)  
 140 that represents a summarised state of microbiome by reflecting the enterotype composition<sup>18</sup>.  
 141 We confirm the additive effect of total hAB on P/B ratio and show that it also holds for different  
 142 classes of antibiotics, namely macrolides (ATC code J01FA), penicillins (J01CR) and  
 143 fluoroquinolones (J01MA), which we will use for the sensitivity analysis (**Fig. 2A**). It must be  
 144 highlighted that the different antibiotics classes are largely uncorrelated in their usage and  
 145 their long-term effects on the microbiome composition differ (**Fig. 2B, Fig. 2C**).



146  
 147 **Figure 2. Antibiotic usage in the EstMB cohort.** Panel **A** shows the association between the number  
 148 of different antibiotics used during the last 10 years before the sample collection and *Prevotella*-  
 149 *Bacteroides* ratio. The total AB usage and usage of all AB subclasses was strongly associated with  
 150 *Prevotella/Bacteroides* ratio (combined AB usage  $p=2.04e-8$ , macrolides  $p=0.0192$ , fluoroquinolones  
 151  $p=3.03e-5$ , and penicillins  $p=0.0026$ ). Panel **B** shows the Spearman correlation between the number of  
 152 different antibiotics classes used during the last 10 years before the sample collection. Panel **C** shows  
 153 the unique and shared hits of the univariate analyses associating the antibiotics usage history with the  
 154 abundance of microbial species. Panel **D** shows the proportion of cohort participants by the number of  
 155 antibiotics used during the past 10 years.

156  
 157 Secondly, the usage of antibiotics and the disease cannot have any common cause. This  
 158 assumption can be easily violated when prevalent disease cases are analysed. Namely, the  
 159 disease could for example weaken the immune system, which would in turn result in higher  
 160 antibiotics consumption, often referred to as a “feedback loop”. We address this issue by  
 161 analysing only incident disease cases that are observed during the follow-up period (thus after  
 162 the period where AB usage was recorded). As a sensitivity analysis we additionally analyse

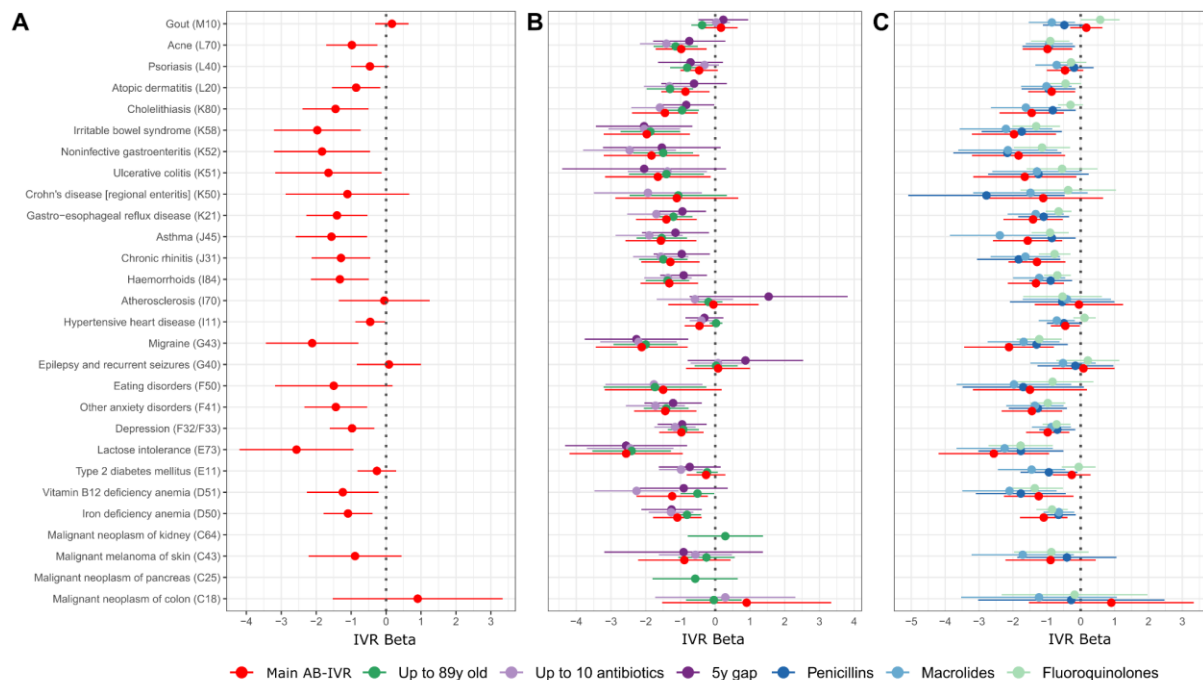


163 disease cases that have been diagnosed more than 5 years after the sample collection, to  
164 eliminate the possibility of prevalent diseases that have not yet been diagnosed, but are  
165 already present and affecting the microbiome composition. Violation of the second assumption  
166 can also occur when subjects of poorer health are studied, since these individuals are more  
167 likely to take a larger number of antibiotics and develop further comorbidities. For example,  
168 elderly individuals are likely to have weaker immunity and therefore take a larger number of  
169 antibiotics, but at the same time they are at higher risk of various comorbidities. Thus an overall  
170 frailty level could act as a confounder. To address this concern, we focus our analysis only on  
171 younger people (ages 23-50), who have taken up to 5 courses of antibiotics during 10 years  
172 prior to microbiome sampling or start of follow-up (See Methods, **Fig. 1**). The lower limit for  
173 age refers to the minimum age in the EstMB cohort. The chosen threshold for the number of  
174 antibiotics courses is highly common in the population, thus it is meant to represent the  
175 healthier part of the population (**Fig. 2D**), allowing us to exclude individuals with chronic and  
176 extreme AB usage. As sensitivity analyses, we study older people, extending the age range  
177 to 89 (refers to the maximum age in EstMB cohort), and usage of antibiotics up to 10 courses.  
178 Thirdly, antibiotics cannot have a direct effect on the disease that is not mediated by the  
179 microbiome composition. Although some authors have indicated that antibiotics can have such  
180 microbiome-independent effects, the evidence is currently weak and we consider that most of  
181 the effect is based on altering the microbiome composition<sup>19</sup>.

## 182 Causal role of the microbiome on diverse disease groups confirmed with the novel AB- 183 IVR framework

184 We applied the AB-IVR methodology to assess whether the microbiome has a causal role for  
185 the development of 56 conditions across diverse disease groups. We focused primarily on  
186 common chronic diseases and cancers where antibiotics are not used as a treatment and  
187 which had at least 50 incident cases. Due to the broad selection of diseases, we did not apply  
188 any disease specific inclusion and exclusion criteria, but future studies should take the disease  
189 specificity into account. Antibiotics have a complex effect on MB via altering the abundances  
190 of several members of the composition simultaneously. Therefore, when the analysis is based  
191 on general hAB, various taxa are altered simultaneously and thus it is not possible to imply  
192 which specific species or genera are the culprit in disease formation. This is a limitation of our  
193 methodology and remains a challenge to be solved by future improvements. Therefore,  
194 instead of using the data of specific species or genera to characterise the changes in the  
195 microbiome, we analysed the effect of *Prevotella-Bacteroides* (P/B) ratio, which reflects the  
196 general state of the microbiome.

197 In total, the microbiome was identified to have a causal effect on 23 diseases (FDR  $\leq$  0.05)  
 198 (Fig. 3A, Supplementary Fig. 1, Supplementary Table 1). These diseases include  
 199 cardiometabolic diseases like cardiac arrhythmias, intestinal diseases like irritable bowel  
 200 syndrome and gastro-esophageal reflux disease, skin diseases like atopic dermatitis and  
 201 acne, and several mental disorders like anxiety disorders and depression. The causal  
 202 estimates are largest for lactose intolerance, migraine and irritable bowel syndrome with the  
 203 dominance of *Prevotella* defending against the disease progression. Notably, we did not  
 204 identify the causal effect of the microbiome on any of the cancers studied, which is likely due  
 205 to excluding older individuals from the analysis.



206 **Figure 3. Results of the main AB-IVR analysis (A) and sensitivity analyses (B,C).** On panels A,B,  
 207 and C the causal effect estimate of *Prevotella/Bacteroides* ratio on a selection of diseases is presented  
 208 (full results comprising all diseases analysed can be viewed in **Supplementary Tables 1, 3-5, and 6-8**).  
 209 In panel A the age is filtered as 23-50, maximum number of AB prescribed is five, and minimum  
 210 number of cases per disease is 50. Panel B represents the sensitivity analyses where sample formation  
 211 varies, whereas the main analysis is depicted for comparison in red. Green shows the effect estimates,  
 212 when age is filtered as 23-89; light-purple shows the effect estimates, when the maximum number of  
 213 AB prescribed is 10; dark-purple describes the scenario where the first five years of incidence after the  
 214 start of follow-up is considered as prevalent disease. Panel C represents the sensitivity analyses where  
 215 information regarding subclasses of AB were used instead of the total amount of AB prescribed,  
 216 whereas other settings were identical to the main analysis. Red corresponds to the main analysis (same  
 217 as A), dark blue corresponds to the class of penicillins (J01CR), light-blue corresponds to the class of  
 218 macrolides (J01FA) and light-green corresponds to the class of fluoroquinolones (J01MA).

## 220 Sensitivity analysis and assessment of different antibiotics as instruments

221 We carried out several sensitivity analyses to assess the validity of the model estimates.  
 222 Firstly, we simulated random binary variables with different event probabilities to see how our  
 223 approach behaves in a scenario where no effect is expected. Indeed, the method did not



224 identify any effects and manages to control the false discovery rate perfectly (**Supplementary**  
225 **Table 2**). Next, we focused on different scenarios which would test the model behaviour when  
226 the study population includes subjects who are more likely to have health complications, thus  
227 testing the second model assumption. For that we considered subjects up to 89 years old  
228 (refers to the maximum age in EstMB cohort), subjects that had been prescribed antibiotics  
229 up to 10 times during 10 years prior to microbiome sample collection or start of follow-up, and  
230 considering a 5 year “gap” in defining the incident cases after the start of follow-up (**Fig. 3B,**  
231 **Supplementary Fig. 2, Supplementary Tables 3, 4, 5**). The reasoning behind the chosen  
232 sensitivity analyses is discussed in detail in the Methods. We observed no major differences  
233 in the estimated causal effects for any of the tested scenarios. Most notably, the causal  
234 estimates for diseases that showed strongest effects in the primary analysis remained largely  
235 untouched by the scenarios tested. This includes diseases like migraine, irritable bowel  
236 syndrome, chronic rhinitis and depression. Lastly, we carried out sensitivity analysis to test  
237 the performance of different antibiotics subclasses as instruments (**Fig. 3C, Supplementary**  
238 **Tables 6, 7, 8**). Again, the results remained similar and the previously highlighted causal  
239 estimates remained largely unchanged and independent of the chosen instrument. Since  
240 different antibiotics classes are largely uncorrelated in their usage and their long-term effects  
241 on the microbiome composition differs (**Fig. 2B, Fig. 2C**), the differences between the effect  
242 estimates can originate from the varying targets of antibiotic subclasses and can refer to  
243 divergent patterns in influenced subcommunities. This might be the case for gout where using  
244 macrolides and fluoroquinolones as instruments results in causal effect estimates with  
245 opposite directions, but with the total antibiotics usage as an instrument, no causal effect is  
246 identified (**Supplementary Fig. 3**). However, the overall similarity of the estimates for most of  
247 the diseases confirms the underlying causal effect of the microbiome as a whole. Lastly, since  
248 the logarithm of the P/B ratio is with a bimodal distribution, we additionally performed an  
249 analysis where the P/B ratio was inverse normal transformed. However, we did not observe  
250 any notable discrepancies compared to the main analysis (**Supplementary Fig. 1,**  
251 **Supplementary Table 9**).

## 252 Discussion

253 We introduce and demonstrate an analytical approach that expands the causal inference  
254 toolbox for microbiome studies by using long-term antibiotics usage as an instrument in an  
255 instrumental variable regression setting. We show that the history of antibiotics usage can be  
256 a valid instrument and that the microbiome has a causal role for several diseases, such as  
257 migraine, irritable bowel syndrome, depression and many others.

258 Establishing the causal role of microbiome in complex diseases can involve different levels of  
259 evidence from the identification of disease associations and faecal microbiota transplantations  
260 (FMT) to understanding the molecular mechanisms that produce the phenotype<sup>20</sup>. While the  
261 established knowledge about the mechanisms of microbial strains or microbial metabolites  
262 remains scarce, computational approaches and FMT studies have been used to show the  
263 causal role of microbiome in several conditions<sup>20</sup>. In line with our findings, Mendelian  
264 randomization studies have identified the causal role of microbial taxa for migraine<sup>21</sup>, irritable  
265 bowel syndrome<sup>22</sup> and depression<sup>13,23</sup>. Nevertheless, MR studies have indicated the causal  
266 role of microbiome in type 2 diabetes<sup>23</sup>, psoriasis<sup>24</sup>, inflammatory bowel diseases<sup>12</sup> and heart  
267 failure<sup>25</sup>, which was inconsistent with our findings. However, these inconsistencies can be  
268 expected as our approach focuses on the general effects of the microbiome composition,  
269 which is more in line with how the FMT studies can inform causality. Then again, FMT studies  
270 are coupled with challenges such as screening and processing the FMT material and selection  
271 of the donor and the mode of delivery<sup>26</sup>. Additionally, the gut microbiome and lifestyle of the  
272 recipient can significantly alter the success of the FMT<sup>26</sup>. Therefore, although FMT has been  
273 shown to transmit or alleviate hypertension<sup>27</sup>, IBD<sup>28</sup> and insulin sensitivity<sup>29,30</sup>, the results can  
274 be conflicting<sup>28,31</sup>. Thus, we believe that in the quest for establishing the causal effects, our  
275 approach can provide an additional layer of evidence that combines features from the MR and  
276 FMT approaches.

277 Antibiotics are meant to kill or inhibit the growth of bacteria and are commonly directly or  
278 indirectly effective against several members of the microbial community<sup>32</sup>. Therefore, using  
279 long term usage of antibiotics as an instrument allows us to estimate the causal effect of the  
280 disturbed part of the community. This brings along two limitations for the proposed  
281 methodology: we cannot identify the effects of single members of the community; and we  
282 cannot rule out the potential causal effects of the members that are unaffected by the  
283 antibiotics used. Thus, the microbiome can still be causal for the development of diseases for  
284 which our proposed methodology did not show a causal effect. Tackling these limitations  
285 opens up several directions for future development. Since different antibiotic subgroups are  
286 intended to have an effect on different bacteria, one can use or design instruments that are  
287 specific to certain subcommunities or taxa to estimate the causal effects of interest. Also,  
288 several instruments such as long-term usage of different antibiotic subclasses and other drugs  
289 with persistent effects on microbiome can be combined and used simultaneously, which in  
290 turn opens the opportunity to utilise various sensitivity analyses that are developed for 2-  
291 sample Mendelian Randomization framework. For example, consumption of numerous host-  
292 targeted drugs are known to affect the microbiome<sup>16,33</sup> and antidepressants have also been  
293 shown to have long term effects<sup>34</sup>, but as microbiome-related research is currently rapidly

294 evolving, many more suitable instruments, not limited to medications, are likely emerging in  
295 the near future.

296 Here, we showed in principle how long-term effects of antibiotics can be used to identify the  
297 causal role of the microbiome in a large set of common diseases. However, certain limitations  
298 must be kept in mind while interpreting the results for a specific outcome. We did not focus  
299 separately on any single disease, thus future studies should consider disease-specific  
300 inclusion-exclusion criteria when designing the study. An important consideration concerns  
301 the role of general health behaviour. It is possible that the overall awareness and interest in  
302 one's health promotes the usage of antibiotics, which also indirectly changes the disease risks.  
303 Variables such as gender and education might entail general health behaviour and  
304 consequently simultaneously affect AB-usage and health-outcomes (eg. individuals with  
305 higher education might seek more help from health-care professionals (thus have different  
306 AB-consumption habits), have better eating habits, smoke less, be more physically active etc).  
307 Therefore we advise any future studies using AB-IVR framework to account for such possible  
308 confounders. Lastly, the amount of antibiotic consumption is highly variable in different  
309 populations and antibiotic consumption in Estonia is among the lowest in Europe<sup>35</sup>. Thus, the  
310 results need to be validated in different populations to account for the differences in overall  
311 burden of antibiotics usage.

312 We demonstrated a novel AB-IVR approach by assessing the effect of *Prevotella/Bacteroides*  
313 ratio on a large set of diseases. The results confirmed the utility of the introduced method and  
314 we believe it has large potential to become a new widely used framework that allows to assess  
315 analytically the causal effect of microbiome on health. Further research with disease-specific  
316 inclusion-exclusion criteria is warranted for drawing conclusions about specific health-effects  
317 and several exciting future development options arised.

318

## 319 Methods

### 320 Sample description

321 The proposed method combines the information from two different samples, whereas the  
322 association between the instrument and the exposure is analysed in one sample and the  
323 association between the instrument and the outcome in another sample (**Fig. 1**). In our case  
324 the association between antibiotics usage and microbiome is assessed in the Estonian  
325 Microbiome Cohort<sup>2</sup> and association between antibiotics usage and diseases in the Estonian  
326 Biobank data<sup>17</sup>.

327 The Estonian Biobank (EstBB) is a volunteer-based population cohort initiated in 1999 that  
328 currently includes over 210,000 genotyped adults ( $\geq 18$  years old) across Estonia. Estonian  
329 Microbiome Cohort (EstMB) was initiated in 2017 when more than 2500 EstBB participants, who  
330 joined the EstBB at least 10 years before, provided stool, oral, and blood samples. The EstMB cohort,  
331 microbiome sample collection, stool bacterial DNA extraction and shotgun metagenomic sequencing  
332 are described in detail in Aasmets & Krigul *et al.*<sup>2</sup>. For the current project, taxonomic profiling of  
333 the gut microbiome was carried out using *MetaPhlan3 tool*<sup>6</sup>. The *Prevotella-Bacteroides* ratio,  
334 which we considered as the primary indicator of the microbiome inter-individual variability in  
335 our analysis, was calculated on the *genus* level after imputing zeros with a pseudocount equal  
336 to half of the minimal non-zero relative abundance observed in the data. For both, EstMB and  
337 EstBB one of the major advantages is the possibility to use electronic health records (EHR)  
338 data and follow the participants' health both retrospectively and prospectively. Using EHR, we  
339 obtained the data for the history of antibiotics usage and the disease incidence. The EstMB  
340 participants were removed from the EstBB sample to ensure that the two samples are  
341 independent.

## 342 Start of follow-up

343 An important aspect in the following data-processing is the moment when MB is collected in  
344 Sample 2 (EstMB) and the follow-up starts in Sample 1 (EstBB) (**Fig. 1**). Of note, since the  
345 proposed methodology uses two independent samples, the MB collection and start of follow-  
346 up do not need to be at the same moment of time. In the EstMB cohort the time of MB sample  
347 collection varies between individuals, whereas in the EstBB cohort the start of follow-up is set  
348 to 1st January 2015 for all individuals. The reason for the latter is that the history of antibiotics  
349 usage is not properly recorded before 2005 in the electronic health records and the chosen  
350 cut-off date allows us to analyse the antibiotics consumption during a 10-year period prior to  
351 follow-up in the EstBB cohort. As we were interested in the long-term effects rather than the  
352 extreme alterations that occur due to recent antibiotics usage, we excluded the individuals  
353 who had been prescribed AB during the six months preceding either the start of MB sample  
354 collection in EstMB or start of follow-up in EstBB.

## 355 Defining antibiotics usage and incident diseases

356 To characterise the long-term antibiotics usage, we quantified the number of antibiotics  
357 treatments prescribed in the period between the last 6 months and last 10 years before the  
358 microbiome sample collection or start of follow-up. All drugs with the Anatomical Therapeutic  
359 Chemical (ATC) classification code J01\* were considered as antibiotics. We chose the 10-  
360 year period similar to Aasmets & Krigul *et al.*<sup>2</sup>, where we showed a cumulative long-term effect

361 of antibiotics usage. Additionally, we considered separately the history of usage of penicillins  
362 (ATC code J01CR), macrolides (J01FA) and fluoroquinolones (J01MA) since these classes  
363 have the strongest long-term effects on gut microbiome (Aasmets *et al.*, *unpublished data*).  
364 We restricted the analysis to incident diseases, which we defined as the first occurrence of an  
365 ICD-10 code of interest in the EHR after the start of follow-up (1st January 2015) until the end  
366 of follow-up (31st December 2022). We focused primarily on the chronic common diseases  
367 and cancers with at least 50 incident cases in the EstBB cohort. Summary of the selected  
368 diseases is shown in **Supplementary Table 1**. Furthermore, we excluded from any analysis  
369 of an incident disease the prevalent cases for the corresponding disease. We did not use any  
370 other disease-specific exclusion criteria for the method demonstration. However, we do  
371 encourage to utilise disease-specific exclusion criteria when a more thorough analysis of a  
372 specific disease is of interest.

### 373 Main method

374 For inferring the causal effect of MB on disease we utilised the method of Two-Sample Two-  
375 Stage Least Squares (TSTSLs), which is a special case of instrumental variable regression  
376 for the two-stage estimation in a two-sample setting. A detailed description of TSTSLs can be  
377 found elsewhere<sup>37</sup>. Rationale for using the two-sample setting is that the microbiome is often  
378 measured in smaller samples compared to incident disease outcomes available in the large  
379 biobank samples. Using TSTSLs allows us to leverage the information from such large  
380 samples. We denote in the following formulas the estimated effect of instrument (hAB) on  
381 exposure (MB) as  $\beta_{MB,hAB}$ , instrument on outcome (D) as  $\beta_{D,hAB}$ , and exposure on outcome,  
382 i.e. the causal relationship of interest, as  $\beta_{D,MB}$ . We estimate  $\beta_{D,hAB}$  in the EstBB cohort  
383 (Sample1) using the logistic regression model and  $\beta_{MB,hAB}$  in the EstMB cohort (Sample2)  
384 using the linear regression model. Thereafter we calculate the effect-estimate for the causal  
385 relationship as a ratio of coefficients:

$$386 \quad \beta_{D,MB} = \frac{\beta_{D,hAB}}{\beta_{MB,hAB}}.$$

387 Further, we calculate the standard deviation for the estimated  $\beta_{D,MB}$  based on Pacini &  
388 Windmeijer<sup>37</sup> as:

$$389 \quad \sigma_{D,MB} = \sqrt{\frac{\sigma_{D,hAB}^2 + \beta_{D,MB}^2 \sigma_{MB,hAB}^2}{\beta_{MB,hAB}^2}},$$

390 where  $\sigma_{D,hAB}^2$  is the variance of  $\beta_{D,hAB}$  and  $\sigma_{MB,hAB}^2$  is the variance of  $\beta_{MB,hAB}$ . We obtained the  
391 p-values based on z-scores, calculated as  $\beta_{D,MB}/\sigma_{D,MB}$ , and standard normal distribution.  
392 Further, we calculated the confidence intervals for the estimates as  $\beta_{D,MB} \pm 1.96 * \sigma_{D,MB}$  .

393 To account for multiple testing, we used the Benjamini-Hochberg procedure to control for the  
394 false discovery rate (FDR). We set the significance threshold for FDR-adjusted p-value to  
395 0.05.

396

## 397 Model assumptions

398 The obtained  $\beta_{D,MB}$  is a valid causal estimate if the following assumptions are met<sup>38</sup>:

- 399 • AB usage history has an effect on MB;
- 400 • AB usage history is not associated with any of the confounders of the microbiome-  
401 disease association;
- 402 • There is no direct effect of AB usage history on incident disease outcomes outside of  
403 the pathway via microbiome.

404 Possible violations of these assumptions are described in the Results section.

## 405 Sensitivity analyses

406 In the main analysis, we set the maximum number of antibiotics prescribed during the period  
407 of interest to 5, minimum age to 23 and maximum age to 50. The lower limit for age refers to  
408 the minimum age in the EstMB cohort. Subjects with impaired health might be more prone to  
409 comorbidities and higher consumption of antibiotics. Thus, the aim of the initial restriction of  
410 the age range and number of antibiotics used is to focus on the healthier part of the population  
411 to address potential confounding. However, we pursued several sensitivity analyses to assess  
412 the validity and robustness of the method:

- 413 1. We assessed the performance of the method in the setting, where we expect there to  
414 be no association. For that we created pseudo-variables indicating disease  
415 presence/absence for each individual in the EstBB sample by randomly sampling from  
416 binomial distribution with predefined probability. In total we created 39 pseudo-  
417 variables with disease-probabilities ranging from 2.5% to 97.5% (**Supplementary**  
418 **Table 2**). The purpose of the analysis was to check whether the proportion of  
419 significant associations between randomly generated disease-variables and P/B ratio  
420 remains below the nominal alpha-level of 5%.
- 421 2. To account for the feedback-mechanism of the disease whereby the disease might  
422 actually already be prevalent for a period of time prior to diagnosis and could thus



423 already have an effect on the MB, we pursued a sensitivity analysis where we  
424 considered the first 5 years of incidence after the start of follow-up as prevalent and  
425 therefore excluded such individuals from the analysis (**Supplementary Table 5**). With  
426 such sensitivity analysis we aim to eliminate bias originating from the feedback  
427 mechanism of a disease that was already developing and affecting MB prior to the  
428 diagnosis;

429 3. We assessed the relationships between MB and diseases while using specific AB  
430 subgroups as instruments instead of total AB-usage. More specifically, we defined  
431 three additional variables as instruments based on the usage of AB with following ATC-  
432 codes: J01FA (macrolides) (**Supplementary Table 6**), J01MA (fluoroquinolones)  
433 (**Supplementary Table 7**), and J01CR (penicillins) (**Supplementary Table 8**). These  
434 antibiotics classes were chosen since they have the strongest long-term effects on gut  
435 microbiome (Aasmets *et al.*, *unpublished data*). All three variables were uncorrelated  
436 with each other (all Spearman correlations in EstMB and EstBB between the three AB-  
437 subgroups below 0.2 (**Fig. 2B**)), thus representing independent instruments. We  
438 assumed to see in general similar patterns of associations between MB and diseases,  
439 since a strong causal effect should not depend on the instrument used, provided that  
440 the instrument is valid. For this sub-analysis we excluded all the individuals who were  
441 prescribed any AB regardless of the ATC-code during 6 months prior to MB sample  
442 collection or start of follow-up. These analyses were carried out similarly to the main  
443 analysis with the maximum number of AB equal to 5 and age between 23 and 50.

444 4. Since the logarithm of the *Prevotella-Bacteroides* (P/B) ratio has a bimodal  
445 distribution, we additionally performed an analysis where we applied inverse normal  
446 transformation on the P/B ratio prior to analysis using the *RNOmni* R package<sup>39</sup>.  
447 (**Supplementary Table 9**)

## 448 Data availability

449 The metagenomic data generated in this study have been deposited in the European Genome-  
450 Phenome Archive database (<https://www.ebi.ac.uk/ega/>) under accession code  
451 EGAS00001008448. The phenotype data contain sensitive information from healthcare  
452 registers and they are available under restricted access through the Estonian biobank upon  
453 submission of a research plan and signing a data transfer agreement. All data access to the  
454 Estonian Biobank must follow the informed consent regulations of the Estonian Committee on  
455 Bioethics and Human Research, which are clearly described in the Data Access section at  
456 <https://genomics.ut.ee/en/content/estonian-biobank>. A preliminary request for raw

457 metagenome and phenotype data must first be submitted via the email address  
458 [releases@ut.ee](mailto:releases@ut.ee)

459

460 All participants included in the EstBB cohort provided informed consent for the data and  
461 samples to be used for scientific purposes. All participants have joined the Estonian Biobank  
462 on a voluntary basis and have signed a broad consent form, which allows to receive  
463 participant's personal and health data from national registries and databases. Rights of gene  
464 donors are regulated by Human Genes Research Act (HGRA) § 9 – Voluntary nature of gene  
465 donation (<https://www.riigiteataja.ee/en/eli/ee/531102013003/consolide/> current). This study  
466 was approved by the Research Ethics Committee of the University of Tartu (approval No.  
467 266/T10) and by the Estonian Committee on Bioethics and Human Research (Estonian  
468 Ministry of Social Affairs; approval No. 1.1-12/17 and 1.1-12/624).

## 469 Acknowledgements

470 This study was funded by the European Union through the European Regional Development  
471 Fund Project No. 2014-2020.4.01.15-0012 GENTRANSMED. Data analysis was carried out  
472 in part in the High-Performance Computing Center of University of Tartu.

473

474 The authors would like to thank Mari-Liis Tammeorg, Kreete Lüll, Marili Palover, Anu Reigo,  
475 Neeme Tõnisson, Liis Leitsalu, Triinu Temberg and Esta Pintsaar for participating in the  
476 sample collection process of the Estonian Microbiome cohort. We thank Steven Smit, Rita  
477 Kreevan and Martin Tootsi for the DNA extraction process. We thank Reidar Andreson for  
478 bioinformatic support. We also thank all the EstBB study participants.

## 479 Conflict of Interest

480 The authors declare that the research was conducted in the absence of any commercial or  
481 financial relationships that could be construed as a potential conflict of interest.

## 482 Author Contributions

483 O.A., E.O. and K.F. conceptualised and supervised the study. O.A and N.T. designed the  
484 study and performed the data analysis. N.T. and O.A. interpreted the data and prepared the  
485 figures and wrote the manuscript. The EstBB Research Team provided the phenotype data.  
486 All authors read and approved the final paper.

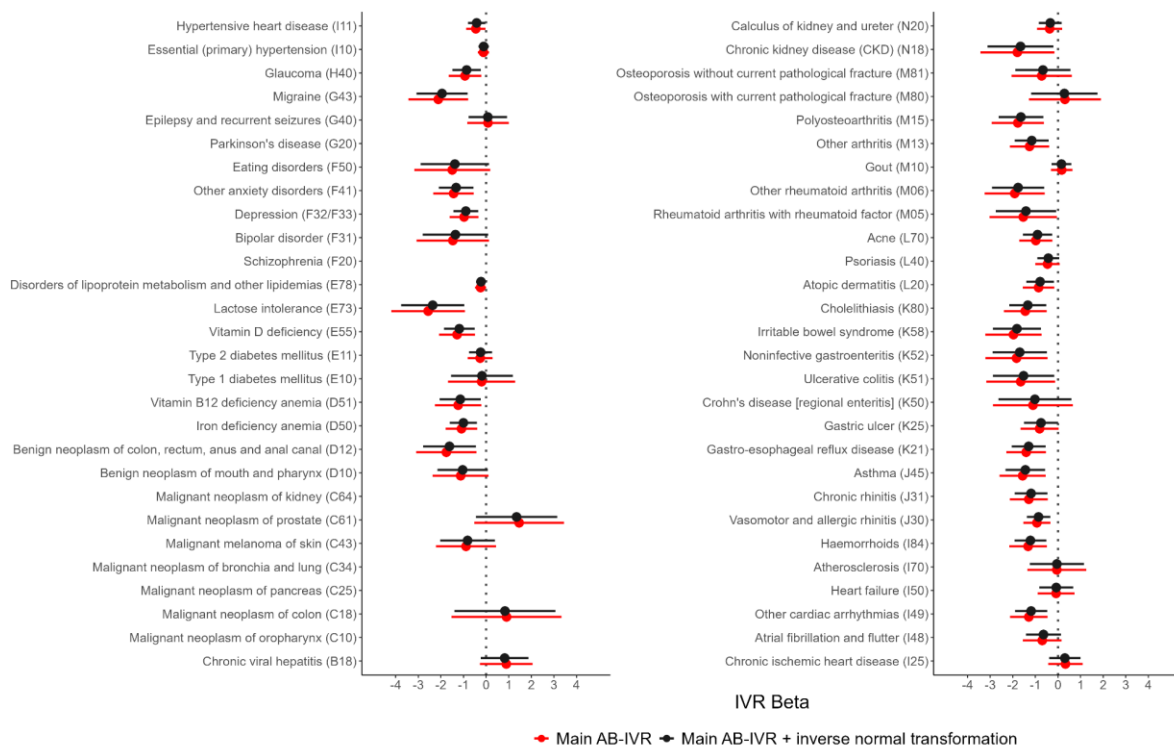
## 487 Funding

488 This work was funded by Estonian Research Council grants (PRG1414 to E.O. and PRG1197  
489 to K.F.) and an EMBO Installation grant (No. 3573 to E.O.). K.F. was additionally funded from  
490 the European Union's Horizon Europe research and innovation programme under grant  
491 agreement No 964874.

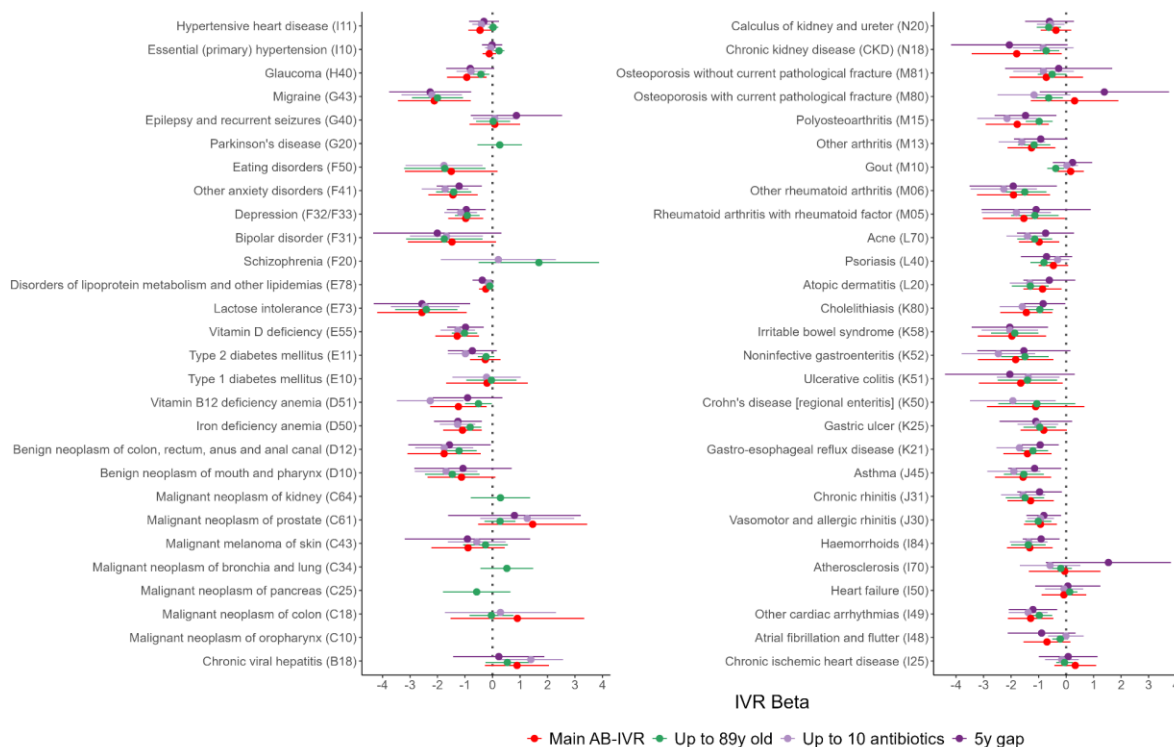
492

493

## 494 Supplementary figures

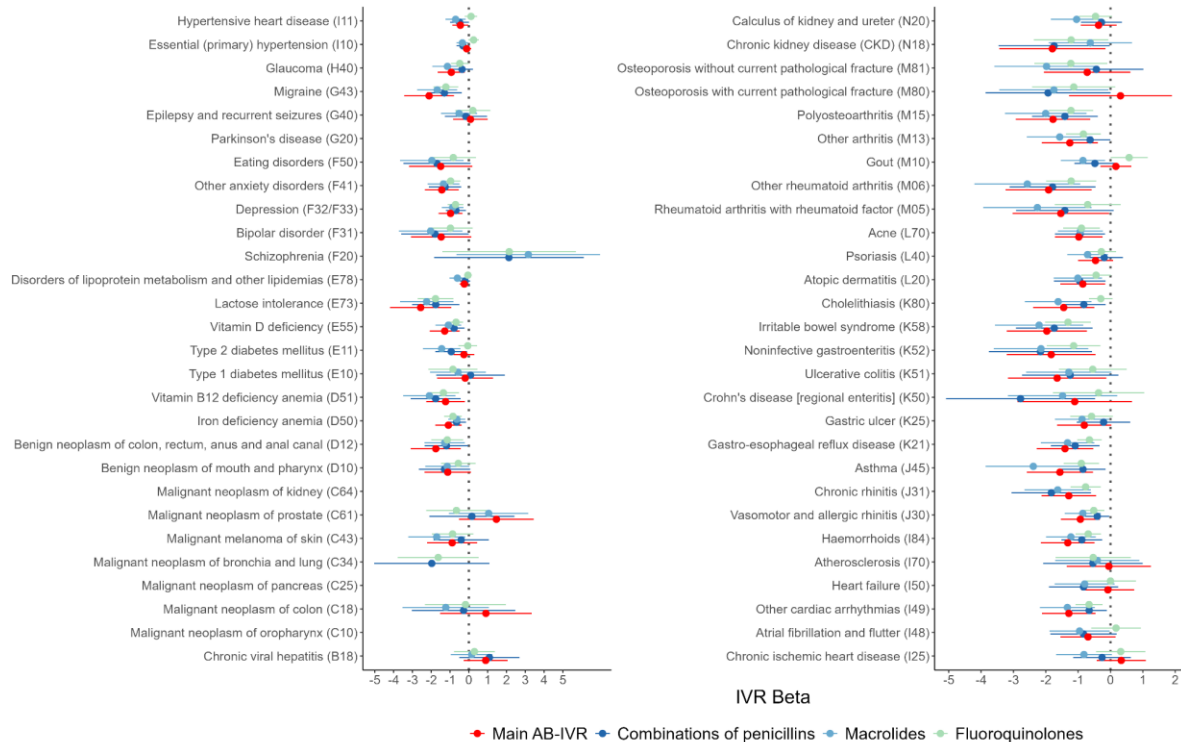


495  
496 **Supplementary figure 1. Results of the main analysis for all the 56 studied diseases.** Colours  
497 represent different data transformations for the *Prevotella/Bacteroides* ratio. Sensitivity analysis results  
498 with the inverse normal transformation is shown in black.  
499



500  
501 **Supplementary figure 2. Results of the sensitivity analysis analysis for all the 56 studied**  
502 **diseases.** Green shows the effect estimates, when age is filtered as 23-89; light-purple shows the effect

503 estimates, when the maximum number of AB prescribed is 10; dark-purple describes the scenario  
 504 where the first five years of incidence after the start of follow-up is considered as prevalent disease.  
 505



506  
 507 **Supplementary figure 3. Results of the sensitivity analysis for all the 56 studied diseases.**  
 508 Information regarding subclasses of AB were used instead of the total amount of AB prescribed,  
 509 whereas other settings were identical to the main analysis. Red corresponds to the main analysis with  
 510 the antibiotics combined, dark blue corresponds to the class of penicillins (J01CR), light-blue  
 511 corresponds to the class of macrolides (J01FA) and light-green corresponds to the class of  
 512 fluoroquinolones (J01MA).

513  
 514  
 515  
 516

## 517 References

- 518 1. Tarini Shankar Ghosh *et al.* Mediterranean diet intervention alters the gut microbiome in  
519 older people reducing frailty and improving health status: the NU-AGE 1-year dietary  
520 intervention across five European countries. *Gut* **69**, 1218 (2020).
- 521 2. Aasmets, O., Krigul, K. L., Lüll, K., Metspalu, A. & Org, E. Gut metagenome associations  
522 with extensive digital health data in a volunteer-based Estonian microbiome cohort. *Nat.*  
523 *Commun.* **13**, 869 (2022).
- 524 3. Gurung, M. *et al.* Role of gut microbiota in type 2 diabetes pathophysiology.  
525 *EBioMedicine* **51**, 102590 (2020).
- 526 4. Aasmets, O. *et al.* Machine Learning Reveals Time-Varying Microbial Predictors with  
527 Complex Effects on Glucose Regulation. *mSystems* **6**, e01191-20 (2021).
- 528 5. Ruuskanen, M. O. *et al.* Gut Microbiome Composition Is Predictive of Incident Type 2  
529 Diabetes in a Population Cohort of 5,572 Finnish Adults. *Diabetes Care* **45**, 811–818  
530 (2022).
- 531 6. Pascal, V. *et al.* A microbial signature for Crohn’s disease. *Gut* **66**, 813–822 (2017).
- 532 7. Wirbel, J. *et al.* Meta-analysis of fecal metagenomes reveals global microbial signatures  
533 that are specific for colorectal cancer. *Nat. Med.* **25**, 679–689 (2019).
- 534 8. Kartal, E. *et al.* A faecal microbiota signature with high specificity for pancreatic cancer.  
535 *Gut* **71**, 1359–1372 (2022).
- 536 9. Ser, H.-L., Letchumanan, V., Goh, B.-H., Wong, S. H. & Lee, L.-H. The Use of Fecal  
537 Microbiome Transplant in Treating Human Diseases: Too Early for Poop? *Front.*  
538 *Microbiol.* **12**, 519836 (2021).
- 539 10. Lv, B.-M., Quan, Y. & Zhang, H.-Y. Causal Inference in Microbiome Medicine: Principles  
540 and Applications. *Trends Microbiol.* **29**, 736–746 (2021).
- 541 11. Long, Y., Tang, L., Zhou, Y., Zhao, S. & Zhu, H. Causal relationship between gut  
542 microbiota and cancers: a two-sample Mendelian randomisation study. *BMC Med.* **21**,  
543 66 (2023).



- 544 12. Liu, B. *et al.* Two-Sample Mendelian Randomization Analysis Investigates Causal  
545 Associations Between Gut Microbial Genera and Inflammatory Bowel Disease, and  
546 Specificity Causal Associations in Ulcerative Colitis or Crohn's Disease. *Front. Immunol.*  
547 **13**, 921546 (2022).
- 548 13. Chen, M., Xie, C.-R., Shi, Y.-Z., Tang, T.-C. & Zheng, H. Gut microbiota and major  
549 depressive disorder: A bidirectional Mendelian randomization. *J. Affect. Disord.* **316**,  
550 187–193 (2022).
- 551 14. Wade, K. H. & Hall, L. J. Improving causality in microbiome research: can human genetic  
552 epidemiology help? *Wellcome Open Res.* **4**, 199 (2019).
- 553 15. Kurilshikov, A. *et al.* Large-scale association analyses identify host factors influencing  
554 human gut microbiome composition. *Nat. Genet.* **53**, 156–165 (2021).
- 555 16. Forslund, S. K. *et al.* Combinatorial, additive and dose-dependent drug–microbiome  
556 associations. *Nature* **600**, 500–505 (2021).
- 557 17. Leitsalu, L. *et al.* Cohort Profile: Estonian Biobank of the Estonian Genome Center,  
558 University of Tartu. *Int. J. Epidemiol.* **44**, 1137–1147 (2015).
- 559 18. Aasmets, O., Krigul, K. L. & Org, E. Evaluating the clinical relevance of the enterotypes  
560 in the Estonian microbiome cohort. *Front. Genet.* **13**, 917926 (2022).
- 561 19. Patangia, D. V., Anthony Ryan, C., Dempsey, E., Paul Ross, R. & Stanton, C. Impact of  
562 antibiotics on the human microbiome and consequences for host health.  
563 *MicrobiologyOpen* **11**, (2022).
- 564 20. Chaudhari, S. N., McCurry, M. D. & Devlin, A. S. Chains of evidence from correlations to  
565 causal molecules in microbiome-linked diseases. *Nat. Chem. Biol.* **17**, 1046–1056  
566 (2021).
- 567 21. He, Q. *et al.* A causal effects of gut microbiota in the development of migraine. *J.*  
568 *Headache Pain* **24**, 90 (2023).
- 569 22. Liu, B. *et al.* Assessing the relationship between gut microbiota and irritable bowel  
570 syndrome: a two-sample Mendelian randomization analysis. *BMC Gastroenterol.* **23**, 150  
571 (2023).

- 572 23. Hughes, D. A. *et al.* Genome-wide associations of human gut microbiome variation and  
573 implications for causal inference analyses. *Nat. Microbiol.* **5**, 1079–1087 (2020).
- 574 24. Zhang, J. *et al.* Association between gut microbiota and psoriasis: a bidirectional two-  
575 sample Mendelian randomization study. [https://www.researchsquare.com/article/rs-](https://www.researchsquare.com/article/rs-3251626/v1)  
576 3251626/v1 (2023) doi:10.21203/rs.3.rs-3251626/v1.
- 577 25. Dai, H. *et al.* Causal relationships between the gut microbiome, blood lipids, and heart  
578 failure: a Mendelian randomization analysis. *Eur. J. Prev. Cardiol.* **30**, 1274–1282  
579 (2023).
- 580 26. Hanssen, N. M. J., De Vos, W. M. & Nieuwdorp, M. Fecal microbiota transplantation in  
581 human metabolic diseases: From a murky past to a bright future? *Cell Metab.* **33**, 1098–  
582 1110 (2021).
- 583 27. Li, J. *et al.* Gut microbiota dysbiosis contributes to the development of hypertension.  
584 *Microbiome* **5**, 14 (2017).
- 585 28. Tan, P., Li, X., Shen, J. & Feng, Q. Fecal Microbiota Transplantation for the Treatment of  
586 Inflammatory Bowel Disease: An Update. *Front. Pharmacol.* **11**, 574533 (2020).
- 587 29. Vrieze, A. *et al.* Transfer of Intestinal Microbiota From Lean Donors Increases Insulin  
588 Sensitivity in Individuals With Metabolic Syndrome. *Gastroenterology* **143**, 913-916.e7  
589 (2012).
- 590 30. Kootte, R. S. *et al.* Improvement of Insulin Sensitivity after Lean Donor Feces in  
591 Metabolic Syndrome Is Driven by Baseline Intestinal Microbiota Composition. *Cell*  
592 *Metab.* **26**, 611-619.e6 (2017).
- 593 31. Zhang *et al.* Impact of Fecal Microbiota Transplantation on Obesity and Metabolic  
594 Syndrome—A Systematic Review. *Nutrients* **11**, 2291 (2019).
- 595 32. Anthony, W. E. *et al.* Acute and persistent effects of commonly used antibiotics on the  
596 gut microbiome and resistome in healthy adults. *Cell Rep.* **39**, 110649 (2022).
- 597 33. Maier, L. *et al.* Extensive impact of non-antibiotic drugs on human gut bacteria. *Nature*  
598 **555**, 623–628 (2018).
- 599 34. McGovern, A. S., Hamlin, A. S. & Winter, G. A review of the antimicrobial side of

- 600 antidepressants and its putative implications on the gut microbiome. *Aust. N. Z. J.*  
601 *Psychiatry* **53**, 1151–1166 (2019).
- 602 35. Bruyndonckx, R. *et al.* Consumption of antibiotics in the community, European  
603 Union/European Economic Area, 1997–2017. *J. Antimicrob. Chemother.* **76**, ii7–ii13  
604 (2021).
- 605 36. Beghini, F. *et al.* Integrating taxonomic, functional, and strain-level profiling of diverse  
606 microbial communities with bioBakery 3. *eLife* **10**, e65088 (2021).
- 607 37. Pacini, D. & Windmeijer, F. Robust inference for the Two-Sample 2SLS estimator. *Econ.*  
608 *Lett.* **146**, 50–54 (2016).
- 609 38. Burgess, S. & Thompson, S. G. *Mendelian randomization: methods for using genetic*  
610 *variants in causal estimation*. (CRC Press, 2015).
- 611 39. McCaw, Z. R., Lane, J. M., Saxena, R., Redline, S. & Lin, X. Operating characteristics of  
612 the rank-based inverse normal transformation for quantitative trait analysis in genome-  
613 wide association studies. *Biometrics* **76**, 1262–1272 (2020).