

## **Machine learning based prediction of prolonged duration of mechanical ventilation incorporating medication data**

Running Title: Predicting prolonged duration of mechanical ventilation

Andrea Sikora, PharmD, MSCR, BCCCP, FCCM (corresponding author)

<https://orcid.org/0000-0003-2020-0571>

sikora@uga.edu

University of Georgia College of Pharmacy, Department of Clinical and Administrative Pharmacy, Augusta, GA, USA

1120 15th Street, HM-118 | Augusta, GA 30912

Phone: (706)-721-3826 | Fax: (706)-721-9138

sikora@uga.edu

Bokai Zhao, MSPH

bokai.zhao@uga.edu

University of Georgia College of Public Health, Epidemiology & Biostatistics, Athens, GA, USA

Yanlei Kong, MS

kongyanlei@ruc.edu.cn

Renmin University of China, School of Statistics, Beijing, China

Brian Murray, PharmD, BCCCP

<https://orcid.org/0000-0001-6660-9749>

brian.murray@unchealth.unc.edu

University of North Carolina Medical Center, Department of Pharmacy, Chapel Hill, NC, USA

Ye Shen, PhD

yeshen@uga.edu

University of Georgia

University of Georgia College of Public Health, Epidemiology & Biostatistics, Athens, GA, USA

**Disclaimers:** The authors have no conflicts of interest.

**Acknowledgements:** Data acquisition were supported by NC TraCS, funded by Grant Number UL1TR002489 from the National Center for Advancing Translations Sciences at the National Institutes of Health, and Data Analytics at the University of North Carolina Medical Center Department of Pharmacy. American Society of Health-System Pharmacists Innovations in Technology Grant supported this work.

**Word count:** 3,424

**MeSH:** Respiration, Artificial, Critical Care, Artificial Intelligence

## **Abstract**

**Rationale:** Duration of mechanical ventilation is associated with adverse outcomes in critically ill patients and increased use of resources. The increasing complexity of medication regimens has been associated with increased mortality, length of stay, and fluid overload but has never been studied specifically in the setting of mechanical ventilation.

**Objective:** The purpose of this analysis was to develop prediction models for mechanical ventilation duration to test the hypothesis that incorporating medication data may improve model performance.

**Methods:** This was a retrospective cohort study of adults admitted to the ICU and undergoing mechanical ventilation for longer than 24 hours from October 2015 to October 2020. Patients were excluded if it was not their index ICU admission or if the patient was placed on comfort care in the first 24 hours of admission. Relevant patient characteristics including age, sex, body mass index, admission diagnosis, morbidities, vital signs measurements, severity of illness, medication regimen complexity as measured by the MRC-ICU, and medical treatments before intubation were collected. The primary outcome was area under the receiver operating characteristic (AUROC) of prediction models for prolonged mechanical ventilation (defined as greater than 5 days). Both logistic regression and supervised learning techniques including XGBoost, Random Forest, and Support Vector Machine were used to develop prediction models.

**Results:** The 318 patients [age 59.9 (SD 16.9), female 39.3%, medical 28.6%] had mean 24-hour MRC-ICU score of 21.3 (10.5), mean APACHE II score of 21.0 (5.4), mean SOFA score of 9.9 (3.3), and ICU mortality rate of 22.6% (n=72). The strongest performing logistic model was the base model with MRC-ICU added, with AUROC of 0.72, positive predictive value

(PPV) of 0.83, and negative prediction value (NPV) of 0.92. The strongest overall model was Random Forest with an AUROC of 0.78, a PPV of 0.53, and NPV of 0.90. Feature importance analysis using support vector machine and Random Forest revealed severity of illness scores and medication related data were the most important predictors.

**Conclusions:** Medication regimen complexity is significantly associated with prolonged duration of mechanical ventilation in critically ill patients, and prediction models incorporating medication information showed modest improvement in this prediction.

## **Introduction**

Mechanical ventilation (MV) is a frequently encountered supportive care modality in critically ill patients. (1) While life-saving, mechanical ventilation predisposes patients to notable sequelae that can adversely affect patient-centered outcomes including ventilator induced lung injury (VILI), infection, intensive care unit (ICU) acquired muscle weakness, etc. that make the decision to intubate, daily evaluation of extubation potential, and need for tracheostomy essential bedside assessments. (2) Moreover, the risk of these MV-related complications increases as duration of mechanical ventilation increases, and given that over 750,000 patients are supported by MV and approximately 5-25% of those patients in a mixed ICU require MV for greater than 5 days, prediction of patients at most risk becomes increasingly relevant. (3-5) The ability to identify those patients more likely to require prolonged mechanical ventilation (PMV) may alter clinical decision-making, including ventilation or medication management strategies, that may ultimately reduce the duration of therapy.

Previous studies that developed prediction models for PMV have included primarily laboratory and vital sign information (e.g., serum creatinine, acidosis, bicarbonate, etc.);

however, mechanical ventilation cannot be viewed as an isolated intervention but is deeply intertwined with a patient's overall clinical status and associated pharmacotherapy regimen. (1,5-11) Indeed, associated pharmacotherapy regimens are complex with over 30% of patients in the ICU setting having greater than 20 medications prescribed. (12,13) This same study showed that 70% of patients had more than 13 medications at any given point. (12,13) Further, comprehensive medication management strategies aimed at optimizing drug selection (e.g., preferring medications with lower risk of delirium) have shown reductions in duration of mechanical ventilation. (14,15)

Given that medications play a significant role in mechanical ventilation management, quantifying patient-specific, medication-related data is a potentially important prediction variable that has not been well explored. Previous studies have observed associations between medication regimen complexity-intensive care unit (MRC-ICU) score and other relevant outcomes including mortality, length of stay, and fluid overload. (16-24) Moreover, use of machine learning techniques in combination with MRC-ICU appears to improve prediction and has shown utility in a variety of ICU prediction questions. (20,25)

In this study, we aimed to employ both traditional and machine learning techniques to develop and validate PMV prediction models with the goal of identifying the most useful predictors at the bedside. We hypothesized that advanced machine learning techniques may be useful to identify the most important clinical factors that can differentiate between patients with high versus low risk of PMV. Additionally, we aimed to test the hypothesis that the addition of medication related variables would enhance prediction of PMV.

## Methods

### *Source of data*

Patient data were gathered from the Carolina Data Warehouse, which houses Epic<sup>®</sup> electronic health record (EHR) data from the University of North Carolina Health System. The protocol for this study was reviewed and approved by the University of Georgia Institutional Review Board (approval number: (Project00001541)). Due to the retrospective, observational design, waivers of informed consent and HIPAA authorization were granted.

This was a retrospective cohort study of adults aged 18 years and older with an ICU admission and duration of mechanical ventilation greater than 24 hours between October 2015 and October 2020. Patients were excluded if it was not their index ICU admission or if the patient was placed on comfort care within the first 24 hours of ICU stay. Types of ICUs included medical, surgical, trauma, neurosciences, cardiac, and burn. De-identified data from the first ICU admission per each patient was included.

The primary outcome was the presence of prolonged duration of mechanical ventilation, defined as greater than 5 days. De-identified patient data were collected through a trained data analyst including: 1) baseline demographic data: age, sex, admission to the medical ICU, primary admission diagnosis, and data to calculate the sequential organ failure assessment (SOFA), Acute Physiology, Chronic Health Evaluation (APACHE II) score, and medication regimen complexity-intensive care unit (MRC-ICU) score at 24 hours; 2) data at time of mechanical ventilation: highest FiO<sub>2</sub> positive end expiratory pressure (PEEP), and minute ventilation in 12-24 hours after intubation, mode of ventilation at initiation, duration of non-invasive respiratory support prior to intubation, arterial blood gas values, and heart rate; 3) patient outcomes: mortality, ICU length of stay, presence of fluid overload, acute kidney injury

(AKI), and need for vasoactive medications and/or renal replacement therapy; and 4) medication variables: sedatives, analgesics, vasoactive agents, and diuretics taken before intubation. Additionally, the MRC-ICU was calculated at 3 separate time points: 24 hours after ICU admission, at the time of intubation, and 24 hours after intubation. The MRC-ICU measures medication regimen complexity with each line of 35 discrete line items assigned a weighted value and then summed to create a score for a patient's regimen at the given time point. (19) For example, a patient would be given 3 points for vancomycin, 1 point for norepinephrine, and 1 point for insulin for a total score of 5.

### *Statistical Analysis*

Following a literature review of prolonged mechanical ventilation in the ICU, a total of 30 potential predictor variables were identified by investigator consensus to include in each PMV regression model. (5,10,26-33) These variables included the following: 1) *ICU baseline*: age, sex, admission to medical ICU, and primary ICU admission diagnosis (cardiac, chronic kidney disease, heart failure, hepatic, pulmonary, sepsis, trauma); 2) *24 hours after ICU admission*: APACHE II and SOFA score (using worst values in the 24 hour period); presence of acute kidney injury; 3) *Flowsheet and laboratory values at time of intubation*: duration of oxygen support devices prior to intubation, pulse, arterial blood gas values, and ventilator settings (positive end expiratory pressure (PEEP) and fraction of inspired oxygen (FiO<sub>2</sub>); fluid overload. The fourth category was added to assess the role of medications at 24 hours and included: MRC-ICU score at 24 hours after ICU admission, time of intubation, and 24 hours after intubation, dichotomized MRC-ICU less than or greater than or equal to 10 at the same three time points, and certain medications (bumetanide, clonazepam, dexamethasone,

dexmedetomidine, dobutamine, ertapenem, lorazepam, norepinephrine) selected by the investigators following univariate analysis.

Due to the hypothesis-generating nature of this evaluation, no attempt was made to estimate the sample size, and all eligible patients from the available database were included to maximize statistical power of the predictive models developed. Descriptive statistics on the data were calculated before model development. Numerical predictors were summarized by the mean and standard deviation and categorical variables reported count and corresponding proportion of the total population. Clinical characteristics between those patients with and without PMV were compared using either Student *t* test or Chi-square test, as appropriate. Univariate analysis was performed on baseline variables to detect potential important variables for the basic model and select important baseline medications for predicting prolong MV.

Multiple imputation was applied for missing data. Under the assumption of missing at random, a chained equations approach carried out five imputations. (34) After multiple imputation, each of the five completed datasets was split into training data and testing data using an 85:15 ratio in a cross-validation splitting manner. Subsequently, a logistic model was built to predict PMV on each of the five complete training sets. Parameter estimation were pooled using Rubin's rule. (35) Corresponding odds ratio (OR) and 95% confidence intervals (CI) of coefficients were reported respectively, which can reflect the influence of each predictor.

#### *Model development and performance*

Multivariable logistic models were developed to predict PMV. First, a benchmark model was derived using logistic regression and investigator selection that included the following variables: duration of oxygen support devices prior to intubation, highest PaCO<sub>2</sub> and

bicarbonate on arterial blood gas in 12-24 hours after intubation, presence of elevated pulse (>110 beats per minute) in 24 hours prior to intubation, presence of fluid overload before intubation (defined as greater than 10% of admission body weight in volume), highest FiO<sub>2</sub> and PEEP in 12-24 hours after intubation, minute ventilation, and a product of PaCO<sub>2</sub> and minute ventilation in the first 12-24 hours after intubation.

Then, the effects of inclusion of standard severity of illness scores (SOFA score at 24 hours, APACHE II score at 24 hours) and medication related data including both the MRC-ICU at 24 hours and presence of individual drugs were assessed. To evaluate the influence of the MRC-ICU score on PMV, MRC-ICU as a continuous score and MRC-ICU as a dichotomous variable as  $< 10$  or  $\geq 10$  were included separately, with selection of the rest of the variables following this addition. Additional models including all medications taken before intubation and selected medications known to play a significant role in mechanical ventilation were evaluated for their presence at initiation of mechanical ventilation and 24 hours after intubation. For this process, univariate analysis and then least absolute shrinkage and selection operator (LASSO) based logistic model were conducted on the medication dataset for variable screening resulting in two models (base + selected drugs and base + LASSO drugs). All variables were examined, and certain variables were excluded from the models if potential collinearity or mediation effects were present. A full model was fitted with all predictors, and a stepwise regression was conducted. Additionally, variable selection was performed in the MRC-ICU model by mediation analysis. Variables as mediators with significant relationship between MRC-ICU and PMV were removed from the model. The final model was selected based on the best performance.



**Figure 1** in the **Supplemental Content** summarizes the full model development procedure. Multiple logistic models with different predictor variable were built including basic variables, basic variables and MRC-ICU, basic variables and important medications selected via LASSO technique, basic variables with SOFA and APACHE II scores, and basic variables with MRC-ICU, SOFA and APACHE II scores at 24 hours. To compare performance of the models, a series of values were calculated including for the models with classification task: area under the receiver operating characteristic (AUROC), positive predictive value (PPV), negative predictive value (NPV), specificity, and sensitivity. To evaluate performance of the developed model, metrics were calculated on test data from each imputed dataset and averaged. A p-value less than 0.05 was used to determine statistical significance for all outcomes. All analyses were performed using *R* (version 4.1.2).

Random Forest, support vector machine (SVM), and XGBoost were employed for the task of predicting PMV. For these methods, the dataset was imputed and split one time. The mean was used to impute numerical predictors and mode for categorical variable imputation. The dataset was then split into training and test subsets by the ratio of 85:15. Predictions for probability of PMV were made on each of the five imputed testing sets with the corresponding optimal model. Cross-validation was employed for hyperparameters. For Random Forest, two hyperparameters were tuned (number of trees and number of variables randomly sampled as candidates at each split). With the optimal models, the prediction performance on the test dataset was evaluated. For XGBoost, feature importance was measured as the frequency a feature was used in the trees. For Random Forest, feature importance was measured by mean decrease in node impurity. For SVM, feature importance was measured via permutation test

from R package ‘vip’. Then, impacts of predictors on the outcome via the evaluation of feature importance and logistic parameter estimation results were compared.

## Results

Of the 318 patients included, 145 patients (45.6%) were over the age of 65, and 125 (39.3%) were female. Of these, 90 (28.3%) had PMV. Overall, the mean APACHE II score was  $21.0 \pm 5.4$ , mean SOFA score was  $9.9 \pm 3.3$ , and MRC-ICU was  $21.3 \pm 10.5$ . The mean length of MV was  $5.5 \pm 12.8$  days, and overall, the mortality rate within MV period was 22.6% (72 out of 318). Patient outcomes differed by the presence and absence of PMV, with those that had PMV having a higher mortality rate (38.9% vs. 16.2%,  $p < 0.001$ ) and longer mean length of ICU stay (19.9 vs. 3.9,  $p < 0.001$ ). Description of variables used for model development are provided in **Table 1**.

When predicting PMV, statistical and machine learning models were developed, and model performance is summarized in **Table 2**. Using logistic regression, a base model was developed and demonstrated an AUROC of 0.67 (0.39 – 0.94) with an accuracy of 0.78 (0.60 – 0.90). A series of candidate models were then developed using MRC-ICU and severity of illness scores. The nested model using the MRC-ICU at 24 hours was superior to the others and following variable selection, AUROC was improved to 0.73 (0.45 – 0.99) and accuracy of 0.85 (0.68 – 0.95) with a sensitivity of 0.63 and specificity of 0.91, respectively, when Youden’s threshold was applied. No evidence of collinearity was found among the predictors. Results for the full regression model are provided in **Supplemental Content – Table 1**. The mediation analysis showed duration of support devices and  $\text{HCO}_3$  are mediators between the outcome and MRC-ICU ( $p$ -value = 0.016 and  $<0.001$ , respectively). After reviewing the effect

of the three mediators, the final selected model in predicting PMV was developed (see **Supplemental Content - Table 2**).

Among the machine learning models, Random Forest and SVM shared the highest AUROC (0.78) compared to XGBoost (0.69); however, the SVM model was limited by a relatively low accuracy (0.51), potentially secondary to imbalanced data due to the lower overall rate of PMV. To test this, we used smote function in R to oversample PMV and create a balanced dataset. With additional observations of PMV, the accuracy increased to 0.70, which suggested that the imbalanced outcome is one of the reasons leading to the low accuracy of SVM model. Model performance is summarized in **Table 2**. AUROC graphs are plotted in **Figure 2**. Finally, feature importance graphs were plotted for Random Forest (see **Figure 3**), SVM (see **Supplemental Content - Figure 2**), and XGBoost (see **Supplemental Content - Figure 3**). The top five features for each analysis were plotted by count. For Random Forest, the top five included duration of support devices prior to intubation, SOFA score at 24 hours, PaO<sub>2</sub>/FiO<sub>2</sub> ratio, MRC-ICU score at the time of intubation, and PaCO<sub>2</sub>, with MRC-ICU at 24 hours and a product of minute ventilation times PaCO<sub>2</sub> scoring in the top ten. For SVM, the top five most important features (in descending order) were duration of support devices prior to intubation, PaCO<sub>2</sub>, elevated pulse, midazolam, and dexmedetomidine, though again MRC-ICU at 24 hours and the time of intubation also were in the top ten. For XGBoost, the top 5 features (in descending order) were similar: MRC-ICU at intubation, minute ventilation, PaCO<sub>2</sub>, a product of minute ventilation times paCO<sub>2</sub>, and SOFA, with again MRC-ICU at 24 hours and 24 hours after intubation scoring in the top ten. These variables had overlap with the regression model, with arterial blood gas values, ventilator settings, and MRC-ICU at the time of intubation being included.

## Discussion

In the first machine learning analysis for predicting PMV risk in critically ill patients to include detailed medication data, both logistic regression and machine learning analyses demonstrated similar predictive power to identify patients at risk of PMV at the end of the first 24 hours of their ICU stay. Compared to SVM and XGBoost, Random Forest displayed the more robust predictive capabilities, balancing AUROC with reasonable accuracy and high NPV. The machine learning analyses revealed differences with regard to the feature importance variables compared to logistic regression, with the importance of medication-related variables as top predictors repeatedly observed. This finding is particularly salient because while certain medications are known to prolong duration of mechanical ventilation, they are not frequently captured in other analyses that have aimed to predict PMV.

In particular, the logistic regression model with MRC-ICU and Random Forest model achieved reasonable AUROCs, and negative predictive values were high for all models developed. These results are in line with previous evaluations PMV (see **Table 3**), notably with relatively high NPV. (10,11,26-28,31,36,37) Several machine learning analyses of PMV have been conducted in narrow populations (i.e., traumatic brain injury, congestive heart failure, after coronary artery bypass grafting) or used to predict mortality, whereas the present study evaluated a diverse scope of critically ill patients across a variety of ICU settings, which may support external generalizability. (38-41) Moreover, some studies (see **Table 3**) have included elements of medication therapy in their modeling (e.g., duration or dependency on inotropes), but to date, none have taken into account the entire medication administration record or attempted to quantify the additive effects of various medications, as the MRC-ICU has been validated to do. (11,16,29,42) The studies outlined in **Table 3** incorporated traditional

statistical modeling to evaluate predictors of PMV; however, the majority of studies that evaluated medication use found that variable nonsignificant in multivariate analysis.

(28,31,33,37) Notably, one study evaluating use of common sedatives, vasopressors, steroids, and neuromuscular blocking agents found the duration of vasopressor support to be an independent predictor of PMV. (11)

In contrast to the decision to extubate (i.e., a de-escalation of care in a stable patient that can be delayed in situations of high uncertainty), the decision to intubate is an escalation of care often performed in a generally time-sensitive scenario for an unstable patient. Thus, while the rapid shallow breathing index to predict extubation success has a PPV of approximately 78%, it is still a widely used tool. (43) Given the present findings, the ability to predict a high risk of PMV with certainty is limited, and thus as a guide to decisions like early tracheostomy it is likely not viable; however, high NPV may be useful in guiding medication-related decisions (e.g., the decision to use light sedation or be aggressive with diuresis knowing that extubation within 5 days is likely) because it serves as a screening test for PMV. The clinical utility of a model with high NPV is increased clinician confidence that despite the present requirement to intubate the patient, this need is transient. As such, it may direct goals of care discussions and more importantly may guide a more aggressive weaning strategy, both regarding ventilator settings and medication therapy. Indeed, even hours on non-optimized ventilator settings are associated with worse outcomes, including heightened mortality risk. (44-46)

Ventilator settings and medication therapy do not occur in silos but are highly intertwined: liberalizing ventilator settings can reduce the need for sedation (which is known to prolong mechanical ventilation and reduce extubation success). (2,47,48) As opposed to

“settling in” for an intubation that is expected to last for an extended period, such a model may guard against clinical inertia towards more active interventions to get the patient successfully extubated (e.g., early mobility, avoidance of benzodiazepines). (49,50) Despite knowing the importance of light sedation and early mobility, translating this knowledge into action has remained a challenge, but quantitative risk prediction data indicating a short intubation period may guard against this inertia. (50) Beyond the intertwined role of drug and device, medications are a unique element to predictive models, because they represent both independent risk factors for PMV but also potentially modifiable ones. It has been previously proposed that medications represent intervenable events in the ICU. Intervenable events have three characteristics: without action by a clinician, they are associated with *poor* outcomes; however, they are both *preventable* and *predictable*. (51) For example, an idiosyncratic, allergic reaction to the antibiotic cefepime would not be intervenable; however, rapid recognition of sepsis that reduces time to cefepime is intervenable. It is well-established that medications play an integral role in the management and outcomes of mechanically ventilated patients, but in contrast to initial severity of illness indicators (repeatedly demonstrated to both predict and cause PMV), they are frequently modifiable, with appropriate clinical decision support. (14,52,53) For example, diuretics and aggressive volume management are associated with reduced time on the ventilator. (54) Interestingly, the MRC-ICU at the time intubation had a negative association with PMV while the MRC-ICU at 24 hours had a positive association with PMV, indicating the possibility that high complexity may at times be a protective factor. As such, models that incorporate medications present a unique opportunity to guide clinical decision-making that reduces duration of mechanical ventilation.

Limitations of this study include sample size, which though reasonable within many critical care evaluations is comparatively small for machine learning applications. While validation and training sets were used, this evaluation lacks external validation in a separate dataset, and the results do not address the means by which to operationalize such a prediction metric at the bedside. Finally, while the presence or absence of certain medications appeared to play a role in PMV, timing and dosing of these medications (also known to be important for intubated patients) were not evaluated at this juncture.

## **Conclusion**

PMV is a potentially intervenable event in the ICU population with the appropriate prediction modeling that can guide timely intervention. The incorporation of medication-related variables and exploration modeling techniques is an important step towards the prevention of this ICU complication.



**Table 1. Description of model co-variables**

Feature (n = 318)	Presence of Prolonged Mechanical Ventilation (n = 90)	No Presence of Prolonged Mechanical Ventilation (n = 228)	p-value	Total Cohort
<b>ICU Baseline</b>				
Age	57.6±16.4	60.8±17.1	0.125	59.9±16.9
Female	35 (38.9)	90 (39.5)	0.923	125 (39.3)
Admission to medical ICU	37 (41.1)	54 (23.7)	0.002	91 (28.6)
<i>Primary ICU Admission Diagnosis</i>				
Sepsis/Infection	7 (7.8)	14 (6.1)	0.176	21 (6.6)
Pulmonary	10 (11.1)	13 (5.7)		23 (7.2)
Neoplasm	4 (4.4)	10 (4.4)		14 (4.4)
Gastrointestinal	6 (6.7)	16 (7.0)		22 (6.9)
Cardiovascular	11 (12.2)	64 (28.1)		75 (23.6)
Dermatology	2 (2.2)	1 (0.4)		3 (0.9)
Renal	1 (1.1)	3 (1.3)		4 (1.3)
Neurology	14 (15.6)	34 (14.9)		48 (15.1)
Endocrine	0 (0)	2 (0.8)		2 (0.6)
Trauma	9 (10.0)	18 (7.9)		27 (8.5)
<i>ICU Type</i>				
Burn	6 (6.7)	5 (2.2)	<0.001	11 (3.5)
Cardiac	14 (15.6)	95 (41.7)		109 (34.3)
Medical	37 (41.1)	54 (23.7)		91 (28.6)
Neurosciences	13 (14.4)	24 (10.5)		37 (11.6)
Surgical	16 (17.8)	40 (17.5)		56 (17.6)
Mixed	4 (4.4)	10 (4.4)		14 (4.4)
<i>Mode of Ventilation</i>				
Pressure control	4 (5.5)	6 (3.4)	0.675	10 (4.0)
Pressure regulated volume control	61 (83.6)	134 (80.3)		204 (81.3)
SIMV/Pressure regulated volume control	5 (6.9)	15 (8.4)		20 (8.0)
SIMV/Volume Control	0 (0)	3 (1.7)		3 (1.2)
Volume Control	3 (4.1)	11 (6.2)		14 (5.6)
<b>24 hours after ICU admission</b>				
APACHE II at 24 hours	21.0 ± 5.7	20.5 ± 5.3	0.443	21.0 ± 5.4
SOFA at 24 hours	10.4 ± 3.9	9.8±3.1	0.307	9.9 ± 3.3
AKI at 24 hours	34 (37.8)	26 (11.5)	<0.001	90 (28.48)
<b>Medication data</b>				
<b>Selected Drugs</b>				
Bumetanide	5 (5.6)	4 (1.8)	0.124	9 (2.8)
Chlorothiazide	1 (1.1)	2 (0.9)	0.846	3 (0.9)

Cisatracurium	4 (4.4)	4 (1.8)	0.118	8 (2.5)
Clonazepam	0 (0)	9 (4.0)	0.065	9 (2.8)
Dexamethasone	10 (11.1)	14 (6.1)	0.202	24 (7.5)
Dexmedetomidine	11 (12.2)	70 (30.7)	0.001	81 (25.5)
Dobutamine	3 (3.3)	34 (14.9)	0.007	37 (11.6)
Dopamine	6 (6.7)	46 (20.2)	0.003	52 (16.4)
Ertapenem	3 (3.3)	1 (0.4)	0.070	4 (1.3)
Epinephrine	9 (10.0)	44 (19.3)	0.045	53 (16.7)
Hydromorphone	17 (18.9)	62 (27.2)	0.123	79 (24.8)
Lorazepam	28 (31.1)	41 (18.0)	0.016	69 (21.7)
Midazolam	35 (38.9)	122 (53.5)	0.019	157 (49.4)
Milrinone	1 (1.1)	25 (11.0)	0.002	26 (8.2)
Norepinephrine	42 (46.7)	88 (38.6)	0.233	130 (40.9)
Phenylephrine	19 (21.1)	57 (25.0)	0.464	76 (23.9)
Rocuronium	14 (15.6)	61 (26.8)	0.034	75 (23.6)
Sodium Chloride	65 (72.2)	185 (81.1)	0.081	250 (78.6)
Vasopressin	20 (22.2)	59 (25.9)	0.497	79 (24.8)
Neuromuscular blockers	17 (18.9)	64 (28.1)	0.091	81 (25.5)
Vasopressors	46 (51.1)	107 (46.9)	0.501	153 (48.1)
Steroids	25 (27.8)	72 (31.6)	0.507	97 (30.5)
Benzodiazepines	53 (58.9)	140 (61.4)	0.679	193 (60.7)
Inotropes	12 (13.3)	62 (27.2)	0.008	74 (23.3)
MRC-ICU at 24 hours of ICU admission	19.9 ± 10.0	21.8 ± 10.7	0.153	21.3 ± 10.5
MRC-ICU at time of intubation	17.9 ± 10.7	22.6±15.0	0.002	21.3 ± 14.1
MRC-ICU at 24 hours after intubation	18.6 ± 10.1	17.6±10.7	0.464	17.9 ± 10.5
<b>MRC-ICU at 24 hours after ICU admission</b>				
<10	12 (13.3)	28 (12.3)	0.799	40 (12.6)
≥10	78 (86.7)	200 (87.7)		278 (87.4)
<b>MRC-ICU at time of intubation</b>				
<10	21 (23.3)	52 (22.8)	0.920	73 (23.0)
≥10	69 (76.7)	176 (77.2)		245 (77.0)
<b>MRC-ICU at 24 hours after intubation</b>				
<10	18 (20.0)	62 (27.2)	0.183	80 (25.2)
≥10	72 (80.0)	166 (72.8)		238 (74.8)
<b>Flowsheet and laboratory values at time of intubation</b>				
<i>Duration of support devices before intubation (HFNC, BiPAP, CPAP)</i>				
1 day	10 (58.8)	21 (70.0)	0.038	31 (66.0)
2 days	1 (5.9)	1 (3.3)		2 (4.3)
3 days	1 (5.9)	5 (16.7)		6 (12.8)
≥ 4 days	5 (29.4)	3 (10.0)		8 (17.0)
Elevated pulse n/N (%)	13/37 (22.2)	22/77 (28.6)	0.687	35/114 (30.7)
HCO <sub>3</sub> < 20 mEq/L n/N (%)	19/52 (53.3)	31/110 (18.4)	0.372	50/116 (30.9)

It is made available under a [CC-BY-NC-ND 4.0 International license](#) .

PaCO <sub>2</sub>	36.8 ± 6.3	40.4 ± 10.0	0.002	39.2 ± 9.1
FiO <sub>2</sub>	55.1 ± 22.3	46.7 ± 17.1	0.053	49.3 ± 19.2
PaO <sub>2</sub> / FiO <sub>2</sub> median (interquartile range (IQR))	320 (216-446)	307 (237-435)	0.434	308 (234-438)
PEEP	6.6 ± 2.3	7.4 ± 3.1	0.002	6.9 ± 2.6
Minute Ventilation	6.9 ± 3.4	7.0 ± 3.9	0.779	7.0 ± 3.7
PaCO <sub>2</sub> * Minute Ventilation	255.2 ± 131.4	285.1 ± 192.0	0.346	272.3 ± 168.6
Fluid overload n/N (%)	17/90 (57.8)	23/227 (19.3)	0.054	40/317 (12.6)
<i>Data are presented as n (%) or mean ± std unless otherwise stated. SOFA: sequential organ failure assessment, APACHE II: Acute Physiology and Chronic Health Evaluation; ICU: intensive care unit; PEEP: positive end expiratory pressure; SIMV: synchronized intermittent mandatory ventilation</i>				

**Table 2.** Performance of prolonged duration of mechanical ventilation prediction models

	<b>AUROC</b>	<b>Accuracy</b>	<b>Sensitivity</b>	<b>Specificity</b>	<b>PPV</b>	<b>NPV</b>
<i>Traditional regression</i>						
Base	0.67 (0.39, 0.94)	0.78 (0.60, 0.90)	0.57	0.84	0.60	0.88
Base + MRC-ICU	0.73 (0.45, 0.99)	0.85 (0.68, 0.95)	0.63	0.91	0.68	0.90
Base + MRC-ICU (categorical)	0.66 (0.39,0.92)	0.72 (0.53, 0.86)	0.63	0.74	0.43	0.88
Base + LASSO Selected Drugs	0.74 (0.52, 0.97)	0.83 (0.65, 0.93)	0.57	0.90	0.67	0.88
Base + Selected Drugs	0.74 (0.54, 0.94)	0.80 (0.62, 0.92)	0.71	0.75	0.50	0.90
Base + SOFA	0.65 (0.38, 0.91)	0.73 (0.55, 0.87)	0.60	0.77	0.53	0.88
Base + APACHE II	0.71 (0.46, 0.97)	0.78 (0.61, 0.90)	0.66	0.82	0.64	0.90
Base + MRC-ICU, SOFA, APACHE II	0.75 (0.52, 0.97)	0.76 (0.59, 0.89)	0.77	0.76	0.55	0.90
All Variables	0.63 (0.33, 0.91)	0.78 (0.60, 0.90)	0.40	0.66	0.54	0.90
<i>Traditional regression with variable selection</i>						
Base + MRC-ICU	0.77 (0.51, 1.00)	0.82 (0.64, 0.93)	0.71	0.85	0.60	0.90
Base + MRC-ICU (categorical)	0.72 (0.50,0.94)	0.74 (0.56, 0.87)	0.71	0.74	0.50	0.90
<i>Supervised learning models</i>						
Random Forest	0.78 (0.61, 0.95)	0.75 (0.60, 0.86)	0.77	0.74	0.53	0.90
Support Vector Machine	0.78 (0.62, 0.94)	0.51 (0.36, 0.73)	0.94	0.08	0.73	0.33
XGBoost	0.69 (0.51, 0.87)	0.75 (0.60, 0.86)	0.62	0.80	0.53	0.88
MRC-ICU: Medication regimen complexity-intensive care unit; AUROC: area under the receiver operating characteristic; PPV: positive predictive value; NPV: negative predictive value						
Base model included the following variables: duration of support devices prior to intubation, fluid overload in ICU stay before first MV, pulse at time of intubation, ventilator parameters in 12-24 hours after intubation (PEEP, FiO <sub>2</sub> , HCO <sub>3</sub> , minute ventilation), arterial blood gas values in 12-24 hours after intubation (PaCO <sub>2</sub> , PaO <sub>2</sub> ), PaO <sub>2</sub> /FiO <sub>2</sub> ratio PaCO <sub>2</sub> *Minute Ventilation						
LASSO selected drugs included: bumetanide, clonazepam, dexamethasone, dexmedetomidine, dobutamine, ertapenem, lorazepam, norepinephrine						
Selected drugs included: Bumetanide, Chlorothiazide, Clonazepam, Cisatracurium, Dexamethasone, Dexmedetomidine, Dobutamine, Dopamine, Ertapenem, Epinephrine, Hydromorphone, Lorazepam, Midazolam, Milrinone, Norepinephrine, Phenylephrine, Rocuronium, Sodium Chloride, Vasopressin, Neuromuscular blockers, Vasopressors, Steroids, Benzodiazepines, Inotropes						

**Table 3.** Summary of studies evaluating prolonged mechanical ventilation

Author (Year)	Definition of PMV (days)	Patient Population	Variables significantly associated with PMV	Performance
<b>Traditional statistical modeling approaches</b>				
Légaré <i>et al.</i> (2001) (31)	>1	Following CABG	Stroke Re-operation for bleeding Perioperative MI Unstable angina Ejection fraction < 50% COPD Preoperative renal failure Female gender Age > 70	Not reported
Estenssoro <i>et al.</i> (2005) (32)	>21	Mixed medical-surgical ICU	Shock on ICU admission Shock present beyond ICU day 3	Not reported
Natarajan <i>et al.</i> (2006) (33)	≥1	Following on-pump CABG	Ejection fraction < 40% Re-intervention CPB duration > 120 min Creatinine > 1.2 mg/dl Emergency operation	Not reported
Agle <i>et al.</i> (2006) (55)	≥14	Major torso trauma	Initial 24 hour fluid resuscitation Presence of facial fractures Age Admission PEEP ≥ 10 mmHg PaO <sub>2</sub> /FiO <sub>2</sub> ratio < 300 at 24 hours Chest AIS score	AUROC 0.79
Lei <i>et al.</i> (2009) (56)	>3	Following aortic arch surgery with deep hypothermic circulatory arrest	CPB duration > 180 min Age > 60 Emergency operation Preoperative creatinine	AUROC 0.83
Piotto <i>et al.</i> (2012) (57)	>2	Following CABG	Age Chronic kidney disease COPD CABG associated with other procedures Clamping time	Not reported
Sellares <i>et al.</i> (2012) (30)	>7	Respiratory ICU	Heart rate ≥ 105 bpm PaCO <sub>2</sub> ≥ 54 mmHg at the end of the first SBT	Not reported
Clark <i>et al.</i> (2013) (5)	>7	Medical ICU	Intubated in the medical ICU Heart rate > 110 bpm BUN > 25 mg/dL pH < 7.25 Creatinine > 2.0 mg/dL HCO <sub>3</sub> < 20 mEq/L	AUROC 0.75
Totonchi <i>et al.</i> (2014) (29)	>2	Following open heart surgery	Female gender Hypertension COPD Chronic kidney disease	Not reported

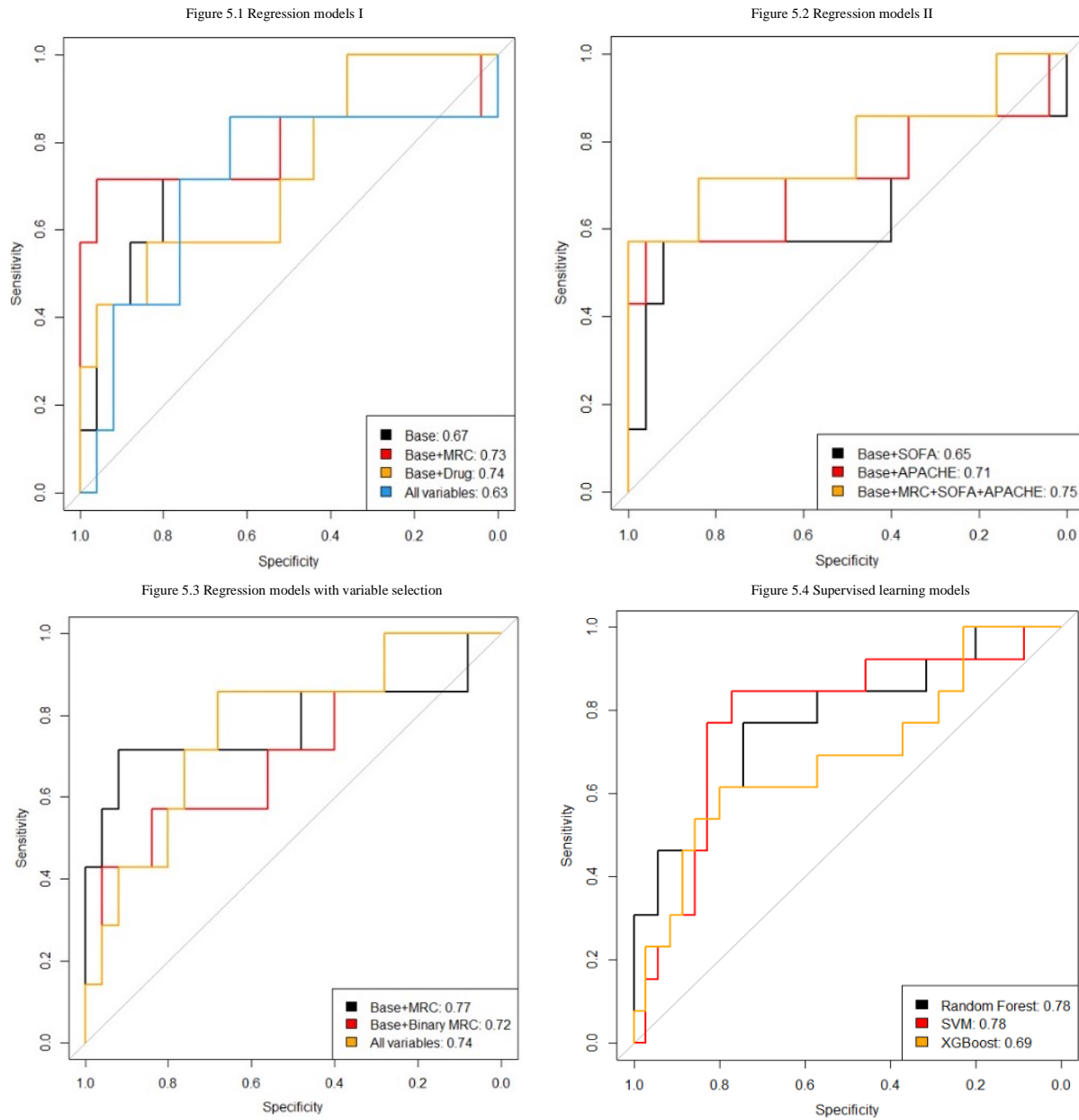
			History of endocarditis CPB duration CABG Operation time >4 hrs Blood transfusion in OR Bleeding Inotrope dependency	
Pu <i>et al.</i> (2015) (28)	>7	Medical-surgical ICU	Glasgow Coma Scale score Hypercapnia at the beginning of the first SBT	Not reported
Jin <i>et al.</i> (2017) (27)	>2	Following Acute Type-A Aortic Dissection Repair	Postoperative hyperlactatemia Preoperative platelet count	AUROC 0.76
Clark <i>et al.</i> (2018) (26)	>14	Medical ICU	Intubated in medical ICU Heart rate > 110 bpm BUN > 25 mg/dL pH < 7.25 Creatinine > 2 mg/dL HCO <sub>3</sub> < 20 mEq/L Acute kidney injury	AUROC 0.82
Sharma <i>et al.</i> (2017) (26)	>2	Following cardiac surgery with CPB	Previous cardiac surgery Low LVEF Cardiogenic shock Surgery involving repair of congenital heart disease CPB duration > 120 min	AUROC 0.78
Mori <i>et al.</i> (2020) (10)	>14	Age >75	Diabetic co-morbidities Diagnoses of the circulatory system on admission	Not reported

#### Machine learning model approaches

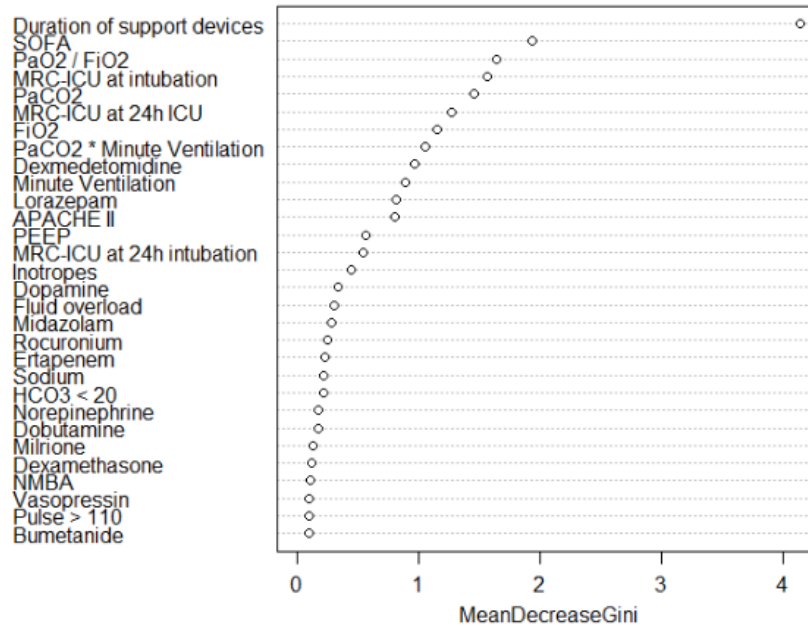
Author (Year)	Definition of PMV (days)	Patient Population	Machine learning methodology	Performance
Wise <i>et al.</i> (2017) (58)	>1	Following CABG	Artificial Neural Network	AUROC 0.73
Parreco <i>et al.</i> (2018) (59)	>7	Surgical and medical ICU	Gradient-Boosted Decision Tree Algorithm	AUROC 0.82
Abujaber <i>et al.</i> (2020) (39)	>10	Traumatic brain injury	Support Vector Model	AUROC 0.84
Lin <i>et al.</i> (2021) (60)	>21	Respiratory care center	XGBoost	AUROC 0.90
Li <i>et al.</i> (2022) (41)	≥4	Congestive heart failure	CatBoost	AUROC 0.79

*PMV: prolonged mechanical ventilation; AUROC: area under the receiver operating characteristic; CABG: coronary artery bypass graft; MI: myocardial infarction; COPD: chronic obstructive pulmonary disease; ICU: intensive care unit; CPB: cardiopulmonary bypass; PEEP: partial pressure of carbon dioxide; SBT: spontaneous breathing trial; AIS: Abbreviated Injury Scale; PaCO<sub>2</sub>: partial pressure of carbon dioxide; PaO<sub>2</sub>: partial pressure of oxygen; FiO<sub>2</sub>: fraction of inspired oxygen; BUN: blood urea nitrogen; OR: operating room; LVEF: left ventricular ejection fraction*

**Figure 1.** Mean AUROC curve comparing prediction models for prolonged duration of mechanical ventilation



**Figure 2.** Feature importance graph using Random Forest





## **Declarations**

### **Ethical Approval**

The University of Georgia Institutional Review Board reviewed this study and deemed it exempt (PROJECT00002652).

### **Competing Interests**

There are no competing interests.

### **Authors' contributions**

All authors meet ICMJE criteria for authorship including (1) substantial contributions to the conception or design of the work; or the acquisition, analysis, or interpretation of data for the work; (2) drafting the work or revising it critically for important intellectual content; (3) final approval of the version to be published; (4) agreement to be accountable for all aspects of the work in ensuring that questions related to the accuracy or integrity of any part of the work are appropriately investigated and resolved. **AS** led project execution, project conception, interpretation of results, manuscript drafting, and revision. **BZ** and **YK** were involved with data analysis, manuscript drafting, and manuscript revision. **BM** was involved with project design, interpretation of results, and manuscript drafting and revision. **YS** was involved with project conception and design, all statistical methodology, manuscript drafting, and critical revision.

### **Funding**

Funding through Agency of Healthcare Research and Quality for Dr. Sikora was provided through R21HS028485 and for Drs. Sikora and Shen through R01HS029009. Dr. Shen's work was also partially supported by R35GM146612 from the National Institute of General Medical Sciences.

### **Availability of data and materials**

Datasets may be provided upon request.

## References

1. Cawley MJ. Mechanical ventilation: introduction for the pharmacy practitioner. *J Pharm Pract* 2011;24(1):7-16.
2. Murray B, Sikora A, Mock JR, Devlin T, Keats K, Powell R, et al. Reverse Triggering: An Introduction to Diagnosis, Management, and Pharmacologic Implications. *Front Pharmacol* 2022;13:879011.
3. Chant C, Dewhurst NF, Friedrich JO. Do we need a pharmacist in the ICU? *Intensive Care Med* 2015;41(7):1314-1320.
4. Marshall J, Finn CA, Theodore AC. Impact of a clinical pharmacist-enforced intensive care unit sedation protocol on duration of mechanical ventilation and hospital stay. *Crit Care Med* 2008;36(2):427-433.
5. Clark PA, Lettieri CJ. Clinical model for predicting prolonged mechanical ventilation. *J Crit Care* 2013;28(5):880 e881-887.
6. Cawley MJ. Mechanical ventilation: a tutorial for pharmacists. *Pharmacotherapy* 2007;27(2):250-266.
7. Cawley MJ. Advanced Modes of Mechanical Ventilation: Introduction for the Critical Care Pharmacist. *J Pharm Pract* 2019;32(2):186-198.
8. Newsome AS, Chastain, D. B., Watkins, P., & Hawkins, W. A. . Complications and Pharmacologic Interventions of Invasive Positive Pressure Ventilation During Critical Illness. . *Journal of Pharmacy Technology* 2018;34(4):153-170.
9. Ghauri SK, Javaeed A, Mustafa KJ, Khan AS. Predictors of prolonged mechanical ventilation in patients admitted to intensive care units: A systematic review. *Int J Health Sci (Qassim)* 2019;13(6):31-38.
10. Mori H, Yamasaki K, Itoh T, Saishoji Y, Torisu Y, Mori T, et al. Predictors of prolonged mechanical ventilation identified at an emergency visit for elderly people: A retrospective cohort study. *Medicine (Baltimore)* 2020;99(49):e23472.
11. Muzaffar SN, Gurjar M, Baronia AK, Azim A, Mishra P, Poddar B, et al. Predictors and pattern of weaning and long-term outcome of patients with prolonged mechanical ventilation at an acute intensive care unit in North India. *Rev Bras Ter Intensiva* 2017;29(1):23-33.
12. Uijtendaal EV, van Harsseel LL, Hugenholz GW, Kuck EM, Zwart-van Rijkom JE, Cremer OL, et al. Analysis of potential drug-drug interactions in medical intensive care unit patients. *Pharmacotherapy* 2014;34(3):213-219.
13. Newsome A, Smith, SE, Jones, TW, Taylor, A, Van Berkel, MA, Rabinovich, M. . A survey of critical care pharmacists to patient ratios and practice characteristics in intensive care units. *J Am Coll Clin Pharm* 2020;3:68-74, .
14. Stollings JL, Foss JJ, Ely EW, Ambrose AM, Rice TW, Girard TD, et al. Pharmacist leadership in ICU quality improvement: coordinating spontaneous awakening and breathing trials. *Ann Pharmacother* 2015;49(8):883-891.
15. Leguelinel-Blache G, Nguyen TL, Louart B, Poujol H, Lavigne JP, Roberts JA, et al. Impact of Quality Bundle Enforcement by a Critical Care Pharmacist on Patient Outcome and Costs. *Crit Care Med* 2018;46(2):199-207.
16. Sikora A, Ayyala D, Rech MA, Blackwell SB, Campbell J, Caylor MM, et al. Impact of Pharmacists to Improve Patient Care in the Critically Ill: A Large Multicenter Analysis

- Using Meaningful Metrics With the Medication Regimen Complexity-ICU (MRC-ICU) Score. *Crit Care Med* 2022;50(9):1318-1328.
17. Newsome AS, Smith SE, Olney WJ, Jones TW. Multicenter validation of a novel medication-regimen complexity scoring tool. *Am J Health Syst Pharm* 2020;77(6):474-478.
  18. Newsome AS, Anderson D, Gwynn ME, Waller JL. Characterization of changes in medication complexity using a modified scoring tool. *Am J Health Syst Pharm* 2019;76(Supplement\_4):S92-s95.
  19. Gwynn ME, Poisson MO, Waller JL, Newsome AS. Development and validation of a medication regimen complexity scoring tool for critically ill patients. *Am J Health Syst Pharm* 2019;76(Supplement\_2):S34-s40.
  20. Al-Mamun MA, Brothers T, Newsome AS. Development of Machine Learning Models to Validate a Medication Regimen Complexity Scoring Tool for Critically Ill Patients. *Ann Pharmacother* 2021;55(4):421-429.
  21. Smith SE, Shelley R, Sikora A. Medication regimen complexity vs patient acuity for predicting critical care pharmacist interventions. *Am J Health Syst Pharm* 2022;79(8):651-655.
  22. Webb AJ, Rowe S, Newsome AS. A descriptive report of the rapid implementation of automated MRC-ICU calculations in the EMR of an academic medical center. *Am J Health Syst Pharm* 2022;79(12):979-983.
  23. Newsome AS, Smith SE, Olney WJ, Jones TW, Forehand CC, Jun AH, et al. Medication regimen complexity is associated with pharmacist interventions and drug-drug interactions: A use of the novel MRC-ICU scoring tool. *JACCP: JOURNAL OF THE AMERICAN COLLEGE OF CLINICAL PHARMACY* 2020;3(1):47-56.
  24. Olney WJ, Chase AM, Hannah SA, Smith SE, Newsome AS. Medication Regimen Complexity Score as an Indicator of Fluid Balance in Critically Ill Patients. *J Pharm Pract* 2021:897190021999792.
  25. Murray B, Zhao B, Kong Y, Shen Y, Sikora A. 935: PREDICTING DURATION OF MECHANICAL VENTILATION WITH MEDICATION REGIMEN COMPLEXITY VARIABLES. *Critical Care Medicine* 2023;51(1):460.
  26. Sharma V, Rao V, Manlhiot C, Boruvka A, Fremes S, Wasowicz M. A derived and validated score to predict prolonged mechanical ventilation in patients undergoing cardiac surgery. *J Thorac Cardiovasc Surg* 2017;153(1):108-115.
  27. Jin M, Ma WG, Liu S, Zhu J, Sun L, Lu J, et al. Predictors of Prolonged Mechanical Ventilation in Adults After Acute Type-A Aortic Dissection Repair. *J Cardiothorac Vasc Anesth* 2017;31(5):1580-1587.
  28. Pu L, Zhu B, Jiang L, Du B, Zhu X, Li A, et al. Weaning critically ill patients from mechanical ventilation: A prospective cohort study. *J Crit Care* 2015;30(4):862 e867-813.
  29. Totonchi Z, Baazm F, Chitsazan M, Seifi S, Chitsazan M. Predictors of prolonged mechanical ventilation after open heart surgery. *J Cardiovasc Thorac Res* 2014;6(4):211-216.
  30. Sellares J, Ferrer M, Cano E, Loureiro H, Valencia M, Torres A. Predictors of prolonged weaning and survival during ventilator weaning in a respiratory ICU. *Intensive Care Med* 2011;37(5):775-784.

31. Legare JF, Hirsch GM, Buth KJ, MacDougall C, Sullivan JA. Preoperative prediction of prolonged mechanical ventilation following coronary artery bypass grafting. *Eur J Cardiothorac Surg* 2001;20(5):930-936.
32. Estenssoro E, Gonzalez F, Laffaire E, Canales H, Saenz G, Reina R, et al. Shock on admission day is the best predictor of prolonged mechanical ventilation in the ICU. *Chest* 2005;127(2):598-603.
33. Natarajan K, Patil S, Lesley N, Ninan B. Predictors of prolonged mechanical ventilation after on-pump coronary artery bypass grafting. *Ann Card Anaesth* 2006;9(1):31-36.
34. White IR RP, Wood AM. Multiple imputation using chained, 10.1002/sim.4067 eiagfpSMd.
35. Rubin DB. Multiple imputation for nonresponse in surveys. Hoboken, N.J. :; Wiley-Interscience; 2004.
36. Clark PA, Inocencio RC, Lettieri CJ. I-TRACH: Validating A Tool for Predicting Prolonged Mechanical Ventilation. *J Intensive Care Med* 2018;33(10):567-573.
37. Cottureau G, Dres M, Avenel A, Fichet J, Jacobs FM, Prat D, et al. Handgrip Strength Predicts Difficult Weaning But Not Extubation Failure in Mechanically Ventilated Subjects. *Respir Care* 2015;60(8):1097-1104.
38. Abujaber A, Fadlalla A, Gammoh D, Abdelrahman H, Mollazehi M, El-Menyar A. Prediction of in-hospital mortality in patients on mechanical ventilation post traumatic brain injury: machine learning approach. *BMC Med Inform Decis Mak* 2020;20(1):336.
39. Abujaber A, Fadlalla A, Gammoh D, Abdelrahman H, Mollazehi M, El-Menyar A. Using trauma registry data to predict prolonged mechanical ventilation in patients with traumatic brain injury: Machine learning approach. *PLoS One* 2020;15(7):e0235231.
40. George N, Moseley E, Eber R, Siu J, Samuel M, Yam J, et al. Deep learning to predict long-term mortality in patients requiring 7 days of mechanical ventilation. *PLoS One* 2021;16(6):e0253443.
41. Li L, Tu B, Xiong Y, Hu Z, Zhang Z, Liu S, et al. Machine Learning-Based Model for Predicting Prolonged Mechanical Ventilation in Patients with Congestive Heart Failure. *Cardiovasc Drugs Ther* 2022.
42. Olney WJ, Chase AM, Hannah SA, Smith SE, Newsome AS. Medication Regimen Complexity Score as an Indicator of Fluid Balance in Critically Ill Patients. *J Pharm Pract* 2022;35(4):573-579.
43. Yang KL, Tobin MJ. A prospective study of indexes predicting the outcome of trials of weaning from mechanical ventilation. *N Engl J Med* 1991;324(21):1445-1450.
44. Needham DM, Yang T, Dinglas VD, Mendez-Tellez PA, Shanholtz C, Sevransky JE, et al. Timing of low tidal volume ventilation and intensive care unit mortality in acute respiratory distress syndrome. A prospective cohort study. *Am J Respir Crit Care Med* 2015;191(2):177-185.
45. Page D, Ablordeppey E, Wessman BT, Mohr NM, Trzeciak S, Kollef MH, et al. Emergency department hyperoxia is associated with increased mortality in mechanically ventilated patients: a cohort study. *Crit Care* 2018;22(1):9.
46. Gajic O, Frutos-Vivar F, Esteban A, Hubmayr RD, Anzueto A. Ventilator settings as a risk factor for acute respiratory distress syndrome in mechanically ventilated patients. *Intensive Care Med* 2005;31(7):922-926.

47. Newsome AS, Chastain DB, Watkins P, Hawkins WA. Complications and Pharmacologic Interventions of Invasive Positive Pressure Ventilation During Critical Illness. *J Pharm Technol* 2018;34(4):153-170.
48. Devlin JW, Skrobik Y, Gelinas C, Needham DM, Slooter AJC, Pandharipande PP, et al. Clinical Practice Guidelines for the Prevention and Management of Pain, Agitation/Sedation, Delirium, Immobility, and Sleep Disruption in Adult Patients in the ICU. *Crit Care Med* 2018;46(9):e825-e873.
49. Marra A, Ely EW, Pandharipande PP, Patel MB. The ABCDEF Bundle in Critical Care. *Crit Care Clin* 2017;33(2):225-243.
50. Ely EW. Every deep-drawn breath : a critical care doctor on healing, recovery, and transforming medicine in the ICU. In: First Scribner hardcover edition. ed. New York: Scribner,; 2021.
51. Sikora A. Critical Care Pharmacists: A Focus on Horizons. *Critical Care Clinics* 2023;[In press].
52. Lightfoot M, Sanders A, Burke C, Patton J. Clinical Pharmacist Impact on Intensive Care Unit Delirium: Intervention and Monitoring. *Hosp Pharm* 2019;54(3):180-185.
53. Zhang Z, Chen K, Ni H, Zhang X, Fan H. Sedation of mechanically ventilated adults in intensive care unit: a network meta-analysis. *Sci Rep* 2017;7:44979.
54. Bissell BD, Laine ME, Thompson Bastin ML, Flannery AH, Kelly A, Riser J, et al. Impact of protocolized diuresis for de-resuscitation in the intensive care unit. *Crit Care* 2020;24(1):70.
55. Agle SC, Kao LS, Moore FA, Gonzalez EA, Vercruyse GA, Todd SR. Early predictors of prolonged mechanical ventilation in major torso trauma patients who require resuscitation. *Am J Surg* 2006;192(6):822-827.
56. Lei Q, Chen L, Zhang Y, Fang N, Cheng W, Li L. Predictors of prolonged mechanical ventilation after aortic arch surgery with deep hypothermic circulatory arrest plus antegrade selective cerebral perfusion. *J Cardiothorac Vasc Anesth* 2009;23(4):495-500.
57. Piotto RF, Ferreira FB, Colosimo FC, Silva GS, Sousa AG, Braile DM. Independent predictors of prolonged mechanical ventilation after coronary artery bypass surgery. *Rev Bras Cir Cardiovasc* 2012;27(4):520-528.
58. Wise ES, Stonko DP, Glaser ZA, Garcia KL, Huang JJ, Kim JS, et al. Prediction of Prolonged Ventilation after Coronary Artery Bypass Grafting: Data from an Artificial Neural Network. *Heart Surg Forum* 2017;20(1):E007-e014.
59. Parreco J, Hidalgo A, Parks JJ, Kozol R, Rattan R. Using artificial intelligence to predict prolonged mechanical ventilation and tracheostomy placement. *J Surg Res* 2018;228:179-187.
60. Lin MY, Li CC, Lin PH, Wang JL, Chan MC, Wu CL, et al. Explainable Machine Learning to Predict Successful Weaning Among Patients Requiring Prolonged Mechanical Ventilation: A Retrospective Cohort Study in Central Taiwan. *Front Med (Lausanne)* 2021;8:663739.

Figure 5.1 Regression model I

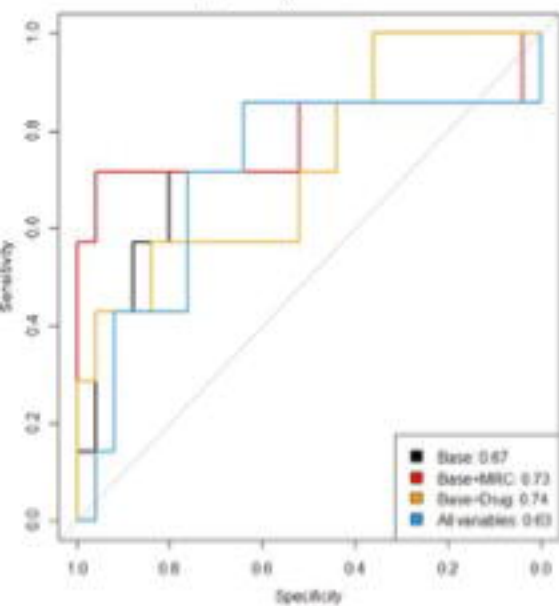


Figure 5.2 Regression models II

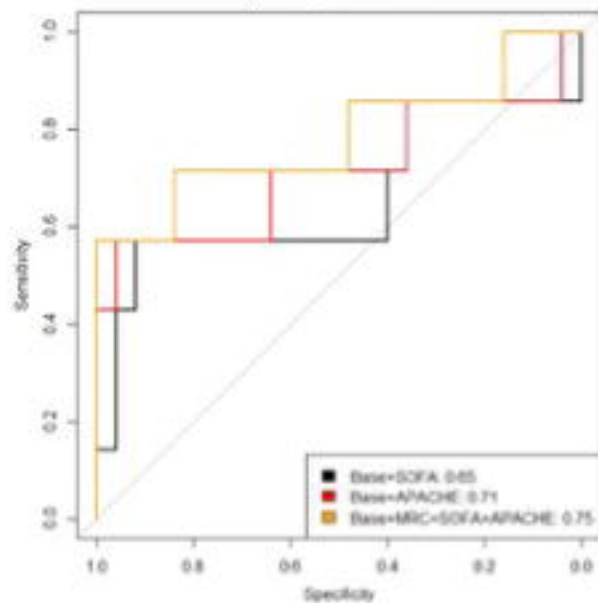


Figure 5.3 Regression models with variable selection

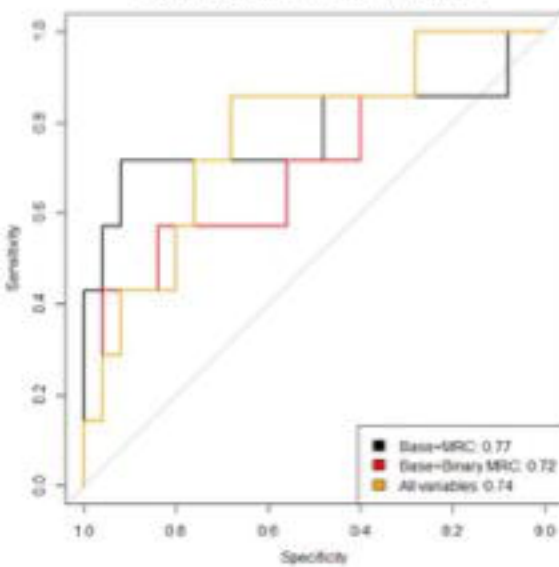
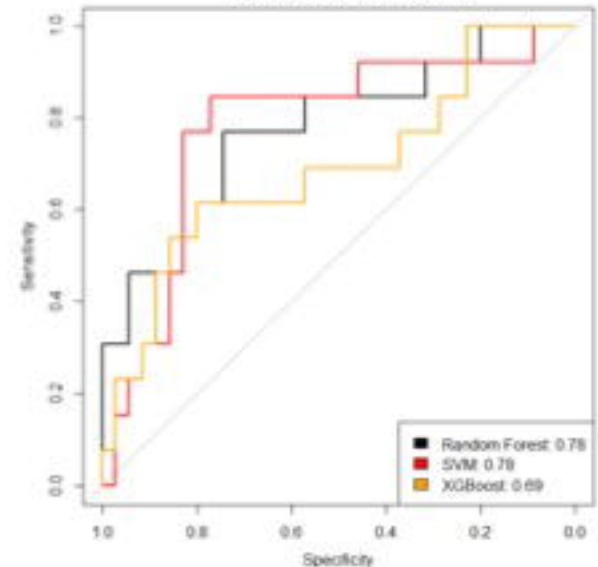


Figure 5.4 Supervised learning models





Duration of support devices  
SOFA  
PaO2 / FiO2  
MRC-ICU at intubation  
PaCO2  
MRC-ICU at 24h ICU  
FiO2  
PaCO2 \* Minute Ventilation  
Dexmedetomidine  
Minute Ventilation  
Lorazepam  
APACHE II  
PEEP  
MRC-ICU at 24h intubation  
Inotropes  
Dopamine  
Fluid overload  
Midazolam  
Rocuronium  
Ertapenem  
Sodium  
HCO3 < 20  
Norepinephrine  
Dobutamine  
Milrione  
Dexamethasone  
NMBA  
Vasopressin  
Pulse > 110  
Bumetanide

