

1 **Adverse Long-Term Outcomes and an Immune Suppressed Endotype in**
2 **Sepsis Patients with Reduced Interferon- γ ELISpot: A Multicenter,**
3 **Prospective Observational Study**
4

5 Evan A. Barrios¹, Monty B. Mazer⁵, Patrick McGonagill⁶ Christian B. Bergmann^{3,*}, Michael D.
6 Goodman³, Robert W. Gould¹¹, Mahil Rao¹⁰, Valerie Polcz¹, Ruth Davis¹, Drew Del Toro⁴,
7 Marvin Dirain¹, Alexandra Dram⁴, Lucas Hale¹¹, Mohammad Heidarian¹², Tamara A. Kucaba¹²,
8 Jennifer P. Lanz¹, Ashley McCray¹, Sandra Meszaros⁴, Sydney Miles⁴, Candace Nelson¹¹,
9 Ivanna Rocha¹, Elvia E Silva⁷, Ricardo Ungaro¹, Andrew Walton⁴, Julie Xu¹², Leilani Zeumer-
10 Spataro¹, Anne M. Drewry⁴ Muxuan Liang², Letitia E. Bible¹, Tyler Loftus¹, Isaiah Turnbull⁴,
11 Philip A. Efron¹, Kenneth E. Remy⁵, Scott Brakenridge¹⁵, Vladimir P. Badovinac^{7,8,9}, Thomas
12 S. Griffith^{12,13,14}, Lyle L. Moldawer^{1,16}, Richard S. Hotchkiss⁴, Charles C. Caldwell³

13
14 ¹Sepsis and Critical Illness Research Center, Department of Surgery, University of Florida
15 College of Medicine, Gainesville, Florida 32610 USA

16
17 ²Department of Biostatistics, University of Florida College of Medicine, Gainesville, Florida
18 32610 USA

19
20 ³Department of Surgery, University of Cincinnati College of Medicine, Cincinnati, Ohio 45267,
21 USA.

22
23 ⁴Department of Anesthesiology, Washington University School of Medicine, St. Louis, Missouri
24 63110 USA

25
26 ⁵Department of Pediatrics, Case Western Reserve University School of Medicine, Cleveland,
27 Ohio 44106USA

28
29 ⁶Department of Surgery, University of Iowa Carver College of Medicine, Iowa City, Iowa 52242
30 USA.

31
32 ⁷Department of Pathology, University of Iowa Carver College of Medicine, Iowa City, Iowa
33 52242 USA.

34
35 ⁸Interdisciplinary Program in Immunology, University of Iowa Carver College of Medicine, Iowa
36 City, Iowa 52242 USA.

37
38 ⁹Experimental Pathology Ph.D. Program, University of Iowa Carver College of Medicine, Iowa
39 City, Iowa 52242 USA.

40
41 ¹⁰Department of Pediatrics, University of Iowa Carver College of Medicine, Iowa City, Iowa
42 52242 USA.

43
44 ¹¹Department of Anesthesiology, University of Minnesota Medical School, Minneapolis,
45 Minnesota 55455 USA.

46
47 ¹²Department of Urology, University of Minnesota Medical School, Minneapolis, Minnesota
48 55455, USA.

49
50 ¹³Center for Immunology, University of Minnesota Medical School, Minneapolis, Minnesota
51 55455 USA.

52
53 ¹⁴Minneapolis VA Healthcare System, Minneapolis, Minnesota 55417, USA

54
55 ¹⁵Department of Surgery, Harborview Medical Center, University of Washington School of
56 Medicine, Seattle, Washington 98133 USA

57
58 * *current address: Department of Anesthesiology and Critical Care Medicine, University of Ulm,*
59 *Ulm Germany.*

60
61 Running head: ELISpot Use in Critical Illness

62
63 Key words: critical illness, late mortality, procalcitonin, IL-6, prediction modeling.

64
65 Correspondence should be directed to:

66
67 ¹⁶Corresponding Author Responsible for Content:

68
69 Lyle L. Moldawer, Ph.D.
70 Sepsis and Critical Illness Research Center
71 Department of Surgery
72 room 6116, Shands Hospital
73 University of Florida College of Medicine
74 Gainesville, Florida 32610-0019
75 moldawer@surgery.ufl.edu
76 352, 265-0494
77

77

78

79 **Conflict of Interest Statements:**

80 Evan A. Barrios, M.D. reports institutional support for salary from a National Institute of
81 General Medical Sciences training grant in burns, trauma and sepsis (T32 GM-008721) (PAE).

82 Monty B. Mazer, M.D. is a member of Immune Functional Diagnostics, LLC and receives no
83 direct financial compensation. Immune Functional Diagnostics, LLC is developing predictive
84 metrics in critical illness and this technology is evaluated in this research.

85 Patrick McGonagill M.D. reports no conflicts of interest.

86 Christian B. Bergmann, M.D. is supported by grants from the Deutsche
87 Forschungsgemeinschaft (German Research Foundation) (BE 7016/1-1).

88 Michael D. Goodman, M.D. reports institutional support for salary from the National Institute of

89 General Medical Sciences (R01 GM-124156) and the Department of Defense (G102983-
90 6263608307-1).

91 Robert W. Gould, M.D. reports no conflicts of interest.

92 Mahil Rao M.D., Ph.D. reports no conflicts of interest.

93 Valerie Polcz, M.D. reports institutional support for salary from a National Institute of General
94 Medical Sciences training grant in burns, trauma and sepsis (T32 GM-008721) (PAE).

95 Ruth Davis, B.S.N, R.N. reports no conflicts of interest.

96 Drew Del Toro, M.D. reports no conflicts of interest.

97 Marvin Dirain, M.S. reports no conflicts of interest.

98 Alexandra Dram reports no conflicts of interest.

99 Lucas Hale, B.A. reports no conflicts of interest.

100 Mohammad Heidarian, M.S. reports no conflicts of interest.

101 Tamara A. Kucaba, B.S. reports no conflicts of interest.

102 Jennifer P. Lanz, M.S.N., R.N. reports no conflicts of interest.

103 Ashley McCray, R.N. reports no conflicts of interest.

104 Sandra Meszaros reports no conflicts of interest.

105 Sydney Miles, B.S. reports no conflicts of interest.

106 Candace Nelson, B.A. reports no conflicts of interest.

107 Ivanna Rocha, M.P.H. reports no conflicts of interest.

108 Elvia E Silva, M.S. reports no conflicts of interest.

109 Ricardo Ungaro, B.S. reports no conflicts of interest.

110 Andrew Walton, M.S. reports no conflicts of interest.

111 Julie Xu, B.S. reports no conflicts of interest.

112 Leilani Zeumer-Spataro, B.S. reports no conflicts of interest.

113 Muxuan Liang, Ph.D. reports no conflicts of interest.

114 Isaiah Turnbull, M.D is a member of Immune Functional Diagnostics, LLC and receives no
115 direct financial compensation. Immune Functional Diagnostics, LLC is developing predictive
116 metrics in critical illness and this technology is evaluated in this research. He is also supported
117 by R35 GM-133756 from the National Institute of General Medical Sciences.

118 Letitia E. Bible, M.D. reports no conflict of interest.

119 Tyler Loftus, M.D. is supported by R01 GM-149657 from the National Institute of General
120 Medical Sciences.

121 Philip A. Efron, M.D. is supported by grants R35 GM-140806, T32 GM-008721 and RM GM-
122 139690 awarded by the National Institute of General Medical Sciences.

123 Kenneth E. Remy, M.D., M.S. is a member of Immune Functional Diagnostics, LLC and
124 receives no direct financial compensation. Immune Functional Diagnostics, LLC is developing
125 predictive metrics in critical illness and this technology is evaluated in this research.

126 Scott Brakenridge, M.D., M.S.C.S. is funded by R35 GM-134880 from the National Institute of
127 General Medical Sciences. Dr. Brakenridge and the University of Florida may receive royalty
128 income based on a technology developed by Dr. Brakenridge and others and licensed by
129 Washington University in St. Louis to IFDx LLC. That technology is evaluated in this research.

130 Vladimir P. Badovinac Ph.D. is funded by R35 GM-134880 from the National Institute of
131 General Medical Sciences.

132 Thomas S. Griffith, Ph.D. is funded by R35 GM-140881 from the National Institute of General
133 Medical Sciences and the recipient of a Research Career Scientist award (IK6BX006192) from
134 the Department of Veteran Affairs.

135 Lyle L. Moldawer, Ph.D. is supported by NIH grants RM1 GM-139690, R01GM-132364 and
136 RF1 NS128626. Dr. Moldawer and the University of Florida may receive royalty income based
137 on a technology developed by Dr. Moldawer and others and licensed by Washington University
138 in St. Louis to IFDx LLC. That technology is evaluated in this research.

139 Richard S. Hotchkiss, M.D. Dr. Hotchkiss and Washington University in St. Louis may receive
140 royalty income based on a technology developed by Dr. Hotchkiss and others and licensed by
141 Washington University in St. Louis to IFDx LLC. That technology is evaluated in this research.
142 He is also supported by R35 GM-126928, awarded by the National Institute of General Medical
143 Sciences.

144 Charles C. Caldwell, Ph.D. Dr. Caldwell and the University of Cincinnati may receive royalty
145 income based on a technology developed by Dr. Caldwell and others and licensed by
146 Washington University in St. Louis to IFDx LLC. That technology is evaluated in this research.

147

148 **Abbreviations**

- 149 ALC, absolute lymphocyte count
- 150 AMA, discharged against medical advice
- 151 AUROC, area under the receiver-operator curve
- 152 CINS, critically ill, nonseptic cohort of patients
- 153 CTSI, UF Clinical and Translational Science Institute
- 154 ELISpot, enzyme-linked immunospot assay
- 155 HLA-DR, human leukocyte antigen DR isotype
- 156 IFN γ , interferon- γ
- 157 IL-6, interleukin 6
- 158 IL-10, interleukin 10
- 159 IPR, in-patient rehabilitation
- 160 LTAC, long-term acute care facility
- 161 mAb, monoclonal antibody
- 162 PBMC, peripheral blood mononuclear cell
- 163 SEPSIS, critically ill, sepsis cohort of patients
- 164 SFU, ELISpot spot forming units
- 165 SNF, specialized nursing facility
- 166 SOFA, sequential organ failure assessment score
- 167 sPD-L1, soluble programmed death ligand-1
- 168 SS, ELISpot spot size
- 169 TE, ELISpot total expression
- 170

171 **Abstract**

172 **Background:** Sepsis remains a major clinical challenge for which successful treatment
173 requires greater precision in identifying patients at increased risk of adverse outcomes
174 requiring different therapeutic approaches. Predicting clinical outcomes and immunological
175 endotyping of septic patients has generally relied on using blood protein or mRNA biomarkers,
176 or static cell phenotyping. Here, we sought to determine whether functional immune
177 responsiveness would yield improved precision.

178 **Methods:** An *ex vivo* whole blood enzyme-linked immunosorbent (ELISpot) assay for cellular
179 production of interferon- γ (IFN- γ) was evaluated in 107 septic and 68 non-septic patients from
180 five academic health centers using blood samples collected on days 1, 4 and 7 following ICU
181 admission.

182 **Results:** Compared with 46 healthy subjects, unstimulated and stimulated whole blood IFN γ
183 expression were either increased or unchanged, respectively, in septic and nonseptic ICU
184 patients. However, in septic patients who did not survive 180 days, stimulated whole blood
185 IFN γ expression was significantly reduced on ICU days 1, 4 and 7 (all $p < 0.05$), due to both
186 significant reductions in total number of IFN γ -producing cells and amount of IFN γ produced
187 per cell (all $p < 0.05$). Importantly, IFN γ total expression on day 1 and 4 after admission could
188 discriminate 180-day mortality better than absolute lymphocyte count (ALC), IL-6 and
189 procalcitonin. Septic patients with low IFN γ expression were older and had lower ALC and
190 higher sPD-L1 and IL-10 concentrations, consistent with an immune suppressed endotype.

191 **Conclusions:** A whole blood IFN γ ELISpot assay can both identify septic patients at increased
192 risk of late mortality, and identify immune-suppressed, sepsis patients.

193 (word count: 249)

194

195 **Trial Registry:** Because the study is a prospective observational study, and not a clinical trial,
196 registration with *clinical trials.gov* is not required.

197

198

199 **Introduction**

200 Sepsis remains one of the most common causes of critical illness and too often leads to death
201 and morbidity (1-3). Importantly, sepsis is a pathophysiologic host response to microbial
202 infection associated with organ injury and dysfunction (4). However, the nature and magnitude
203 of the host response to sepsis is highly variable depending upon the subject's age,
204 comorbidities and source and severity of microbial infection. Although sepsis is frequently
205 associated with an early exaggerated inflammatory response (5), persistent inflammation (6,7),
206 coagulopathy (8), prolonged immune suppression (3,6,9-12), and lean tissue wasting (13,14),
207 the contribution of these individual responses to the overall outcome of the patient is still
208 unresolved (15,16). Precision medicine has been proposed as a tool to identify which
209 immunologic endotype drives organ injury and is an appropriate target for therapeutic
210 intervention (17). Biomarkers, based on static blood cell phenotypes, protein and
211 transcriptomic metrics have been commonly used to endotype critically ill patients with and
212 without sepsis (15,17-20).

213 Enzyme-Linked ImmunoSpot assay (ELISpot) is a widely used immunological technique that
214 enables the detection and quantification of individual cells responding to external receptor-
215 specific and nonspecific stimulants and secreting specific proteins, particularly cytokines (21).
216 This method is important for studying the immune response at the single-cell level, offering
217 valuable insights into immune cell function, and immune-related diseases. Its ability to analyze
218 immune responses at the cellular level makes it particularly suitable for monitoring immune
219 system functionality in sepsis. In the current report, we examined the extent to which whole
220 blood ELISpot production of interferon γ (IFN γ) can identify immune suppressed, critically ill
221 patients at increased risk of death.

222 **Materials and Methods**

223 This multi-center, prospective diagnostic and prognostic study conducted between February
224 23, 2021, and July 22, 2022, enrolled two cohorts of critically ill patients at the time of ICU
225 admission. The first cohort included patients with a suspected diagnosis of sepsis admitted to
226 the ICU (SEPSIS). The second cohort included critically ill patients admitted to the ICU without
227 currently suspected sepsis (Critically Ill, Non-Septic; CINS), but considered at high risk for
228 subsequent infection (e.g., postoperative, severe trauma). Patient enrollment is shown in
229 **Figure 1**, consistent with Enhancing the Quality and Transparency of Health Research
230 Standards for Reporting of Diagnostic Accuracy (STARD) reporting guidelines (22). All patients
231 were managed under institutional clinical management protocols. Centralized ethics approval
232 was obtained from the University of Florida Institutional Review Board (#IRB 202000924)
233 which served as the sponsoring institution. Written informed consent was obtained from each
234 patient or their proxy decision-maker at individual clinical sites.

235 A heparinized blood collection tube (Becton Dickinson) was obtained within the first three days
236 of ICU admission (labeled as day 1), and on subsequent days 3 through 5 (labeled as day 4),
237 and weekly thereafter (\pm 2 days). Self- or proxy-reported race and ethnicity category data were
238 collected as per National Institutes of Health reporting guidelines and requirements.

239 Inclusion criteria consisted of ICU admission from the emergency department for community-
240 acquired sepsis or severe trauma (patients with Injury Severity Scores >15 , hemorrhagic
241 shock, and/or severe chest trauma), as well as non-trauma, postoperative ICU admission, ICU
242 transfer from the emergency department and inpatient transfer from ward to ICU.

243 Sepsis was defined according to Sepsis-3 criteria (4), and all subjects were clinically

244 adjudicated at the individual participating sites. Patients admitted to the ICU for critical illness,
245 non-sepsis (CINS) were also adjudicated to rule out sepsis. A detailed summary of inclusion
246 and exclusion criteria is provided in the **Supplemental Materials and Methods**.

247 Healthy control subjects were recruited at each of the clinical sites. Efforts were made to age,
248 sex and race-ethnicity match the healthy control subjects to the SEPSIS cohort. Individuals
249 with autoimmune diseases being treated with biologic immune modulators were excluded, as
250 were individuals who had received anti-neoplastic therapies or diagnosed with cancer within
251 the past six months. Vulnerable populations were also excluded.

252 **Primary Outcomes and Clinical Adjudication**

253 The primary clinical outcome for ELISpot was 180-day mortality, determined via clinical
254 records and telephone follow-up with the patient, their proxy, or their designated contact, and
255 cross-checked through the US Social Security Death Index. We analyzed temporal trends of
256 ELISpot in both SEPSIS and CINS patients but compared estimated performance of predictive
257 models primarily in the SEPSIS patients, as 180-day mortality in the CINS cohort was <4%.
258 Final sepsis or CINS adjudication was performed by physician-investigator determination at
259 each clinical site at completion of each patient's hospital course.

260 Secondary clinical outcome variables included all-cause (in hospital, 30-day) mortality,
261 development of chronic critical illness (CCI), secondary infections, and poor discharge
262 disposition. Inpatient clinical trajectory was defined as "early death", "rapid recovery", or "CCI".
263 CCI was defined as an ICU length of stay ≥ 14 days with evidence of persistent organ
264 dysfunction (SOFA score ≥ 2) (23). Hospitalized patients who died after an ICU length of stay
265 >14 days from the index hospitalization were also classified as CCI. Poor disposition was

266 defined as discharge to a skilled nursing facility (SNF), long-term acute care facility (LTAC), or
267 hospice. Secondary infections were defined as per the US Centers for Disease Control and
268 Prevention criteria.

269 **ELISpot**

270 ELISpot assays were conducted using the human IFN γ Immunospot[®] kit (CTL Inc., Cleveland,
271 OH) with several important modifications including the use of diluted whole blood as previously
272 described (21). Specifically, 100 μ l of heparinized whole blood was diluted 1:10 with kit buffer
273 and 50 μ l of the diluted sample was added to each well. Samples were incubated in wells
274 containing either buffer alone or a soluble anti-CD3/anti-CD28 (125 ng/ml/1.25 μ g/ml) mAb
275 agonist (BioLegend, San Diego, CA). Samples were assayed in duplicate. Optimal
276 concentrations of agonist were determined in preliminary studies (see **Supplemental**
277 **Materials and Methods**).

278 Samples were quantitated using a CTL S6 Entry or S6 FluoroCore[™] ELISpot reader at each
279 clinical site. To assure comparable results, the instruments were harmonized by CTL Inc. prior
280 to study using an external standard across all five clinical sites. Results are presented as the
281 number of spot-forming units (SFU), spot size (μ m²; SS) and total expression (μ m²; TE) a
282 product of the number of spots and mean spot size using the Immunospot[®] SC software suite
283 (version 7.0.30.4). Spot forming units represent individual blood cells expressing IFN γ and spot
284 size is an indication of the amount of IFN γ produced per cell. In subsequent analyses, the
285 number of IFN γ -producing cells was adjusted for each individual patient's absolute lymphocyte
286 count to yield the percentage of total lymphocytes expressing IFN γ .

287 **Additional Laboratory Analyses**

288 Whole blood total leukocyte and absolute lymphocyte counts were determined on EDTA-
289 anticoagulated whole blood at the individual clinical sites either using their hospital's Clinical
290 and Diagnostics Laboratory or a research Beckman-Coulter Dx500 or Dx900 hemocytometer
291 (Brea, CA). Cytokine and additional plasma protein analyses were conducted at the University
292 of Florida Sepsis and Critical Illness Research Center (SCIRC) where they were determined in
293 batch using the Luminex MagPix[®] (Austin, TX) platform using commercial reagents.

294 Excess sample was stored at the Biorepository of the Clinical and Translational Science
295 Institute (<https://www.ctsi.ufl.edu/research/laboratory-services/ctsi-biorepository-2/>) where it is
296 available to the scientific community under guidelines promulgated by the National Institute of
297 General Medical Sciences.

298 **Data Collection and Analysis**

299 Clinical data collection was conducted at each site and entered into a web-based electronic
300 case report form created on the REDCap[™] platform managed by the University of Florida
301 Clinical and Translational Science Institute (CTSI). Access to the case report form was
302 password protected and limited to only approved research staff, and all interactions with the
303 database were recorded. Peer-to-peer communication allowed approved individuals at all five
304 sites access to their own data and de-identified data from the other four clinical sites. Research
305 data, including ELISpot, total leukocyte and absolute lymphocyte counts, and plasma protein
306 and cytokine data were uploaded into the case report forms from the University of Florida
307 SCIRC. Data managers at the SCIRC were responsible for creating final locked datasets for
308 subsequent analysis.

309 **Statistical Analysis**

310 Descriptive data are presented as frequencies and percentages or medians and IQRs. The
311 Fisher exact test and Mann-Whitney or Kruskal-Wallis ANOVA tests were used for categorical
312 and continuous variables, respectively. Area under the receiver operating characteristics curve
313 (AUROC) values with 95% confidence intervals (computed with 2000 stratified bootstrap
314 replicates) were used to assess discrimination. Univariable and multivariable logistic
315 regression were performed to assess whether the combination of metrics improved overall
316 performance. Post hoc tests were performed for continuous outcomes using the Dunn test. For
317 post hoc analyses of categorical outcomes, separate 2 × 2 Fisher exact tests were performed.
318 All significance tests were 2-sided, with a raw $p \leq 0.05$ considered statistically significant.
319 Analyses were performed using the R Project statistical package, version 4.1.0 (R Project for
320 Statistical Computing).

321 **Results**

322 **Patient Characteristics**

323 Demographic characteristics of the 175 enrolled patients (99 men [57%] and 76 women [43%])
324 and 46 healthy control subjects (16 men [36%], 30 women [64%]) are summarized in **Table 1**.
325 The overall cohort included 107 and 68 patients in the SEPSIS and CINS cohorts, respectively.
326 Patient characteristics were similar across all three cohorts with the exception that the healthy
327 control subjects were more predominantly female and younger, and SEPSIS patients had a
328 higher Charlson comorbidity index than CINS subjects (**Table 1**). Within the CINS cohort
329 ($n = 68$), reason for ICU admission was identified in **Supplemental Table 1**.

330 **Table 2** shows clinical outcomes for the SEPSIS and CINS patients. Hospital length of stay
331 ($p<0.02$), incidence of secondary infections ($p<0.001$), development of CCI ($p<0.001$), and in-
332 hospital mortality ($p<0.01$) were all significantly higher in SEPSIS than in CINS patients.
333 Disposition at discharge also significantly differed between SEPSIS and CINS patients, as did
334 30- and 180-day mortality (both $p<0.01$).

335 **IFN γ Production by Unstimulated and anti-CD3/CD28 mAb-Stimulated Whole Blood**

336 Comparison of the first sample collected (days 1-3 post ICU admission) among the three
337 cohorts revealed considerable heterogeneity in the individual subject response, irrespective of
338 the cohort. Surprisingly, as a group, spontaneous IFN γ production in *unstimulated* whole blood
339 was significantly increased from SEPSIS and CINS patients than from healthy subjects at all
340 sampling intervals (days 1, 4 and 7), despite a significant reduction in lymphocyte numbers
341 (**Figure 2, Supplemental Figure 1**). This was reflected generally by an increased number of
342 IFN γ -producing cells (SFU) (all $p<0.05$);, although the amount of IFN γ produced by each cell
343 (SS) was increased on day 4 (**Figure 3**). When the total number of IFN γ producing cells was
344 adjusted for the absolute lymphocyte count, the percentage of lymphocytes expressing IFN γ
345 was further increased significantly in both SEPSIS and CINS ($p<0.001$; **supplemental Figure**
346 **2**). There was no difference between unstimulated IFN γ expression between the SEPSIS and
347 CINS cohorts.

348 *Ex vivo* stimulation of the whole blood from the three cohorts with agonist anti-CD3/CD28 mAb
349 resulted in expected increases in the total expression of IFN γ produced when compared with
350 unstimulated samples. There were also increase in the total amount of IFN γ produced per unit

351 volume of blood on days 4 and 7 when comparing CINS to healthy subjects (**Figure 2**). This
352 increased IFN γ expression was only seen on day 4 in SEPSIS patients.

353 **Influence of Outcome on ELISpot Responses**

354 SEPSIS subjects had a greater in-hospital, 30- and 180-day mortality when compared to CINS
355 patients (**Table 2**). In addition, the incidence of secondary infections, development of CCI and
356 an adverse discharge disposition were all significantly greater in SEPSIS than CINS patients
357 (all $p < 0.05$).

358 SEPSIS subjects who died within 180 days of ICU admission did not differ from surviving
359 patients based on their admission or day 1 SOFA scores or total leukocyte numbers, even
360 though non-surviving SEPSIS patients were significantly older and had higher Charlson
361 comorbidity scores (both $p < 0.05$; **Supplemental Table 1**). Interestingly, there were marked
362 differences in the IFN γ production from stimulated whole blood between sepsis subjects who
363 survived or did not survive 180 days. Both the absolute number (SFU) and percentage of IFN γ
364 producing cells, and the spot size (SS) were significantly lower, and therefore, total expression
365 (TE) was reduced in non-surviving versus surviving SEPSIS patients (all $p < 0.05$; **Figure 4**).
366 This reduction in expression was, in general, sustained through day 4 in non-survivors (**Figure**
367 **4**). After 7 days, there were too few ICU-remaining patients to continue the comparison (*data*
368 *not shown*). Surprisingly, IFN γ production from *unstimulated* whole blood did not differ between
369 surviving and non-surviving patients at any time point (*data not shown*). There also did not
370 appear to be any significant changes in ELISpot responses (both stimulated and unstimulated)
371 over time in either surviving or non-surviving individual SEPSIS patients (*data not shown*).

372 **Univariate and Multivariate Prediction Models for Long-term Survival and Secondary**
373 **Outcomes.**

374 Because of the differences in IFN γ expression between surviving and non-surviving SEPSIS
375 patients, ELISpot AUROCS were evaluated for their discriminatory prediction of long-term
376 survival (180 day), as well as secondary outcomes, and compared to clinical indices (SOFA,
377 Charlson comorbidity scores), total white blood cell and absolute lymphocyte counts, and
378 plasma protein markers (selected cytokines, procalcitonin, and sPD-L1) in the SEPSIS
379 patients. Similar combined SEPSIS and CINS analyses could not be performed due to the low
380 mortality in CINS patients. Results are presented in **Table 3** and **Figure 5**.

381 Similar to data reported by ourselves and others (24-26), the most consistent discriminator of
382 180-day mortality was the Charlson comorbidity score (AUROC; 0.824 [CI 0.700-0.948], which
383 also discriminated in-hospital mortality (0.762 [0.611-0.912]) and development of CCI (0.713
384 [0.594-0.832]), but not the incidence of secondary infection (0.549 [0.426-0.673]. Importantly,
385 stimulated total IFN γ expression at day 1 and day 4 did not significantly differ from the
386 Charlson comorbidity score with AUROCs of 0.730 (0.601-0.859) and 0.794 (0.691-0.897),
387 respectively. Total IFN γ expression on day 4 also discriminated in-hospital mortality with an
388 AUROC of 0.743 (0.615-0.830), but it was not a strong discriminator of either development of
389 CCI or incidence of secondary infections.

390 For total stimulated IFN γ expression, the components contributing to its discriminative power
391 for 180-day mortality were both the number of IFN γ producing cells (SFU; Day 1, 0.707 [0.568-
392 0.846] and the amount of IFN γ produced by individual cells (SS; Day 1, 0.707 [0.568-0.846]).

393 The discriminatory power of the ELISpot total expression (TE) for predicting both in-hospital
394 and 180-day mortality was much greater than seen for either absolute lymphocyte count
395 (ALC), IL-6, or procalcitonin at either day 1 or day 4, or for changes in these parameters
396 between days 1 and 7 (**Table 3**). In addition, the last ELISpot measurement obtained from the
397 patient prior to discharge or death (usually day 7 or later) was also found to be not as
398 discriminatory as the earlier day 1 and 4 measurements (*data not shown*).

399 Setting the threshold for day 1 and day 4 stimulated total IFN γ expression at approximately
400 80% sensitivity to discriminate 180-day survival, it was possible to assess the
401 immunosuppressive endotype of those SEPSIS patients with reduced ELISpot total expression
402 (**Table 4**). These individuals were older and had absolute lymphocyte counts significantly lower
403 at both days 1 and 4 than SEPSIS patients above the ELISpot threshold. In addition, plasma
404 sPD-L1 concentrations were significantly higher on day 4. Patients below the ELISpot
405 threshold also had in-hospital and 180-day mortality, and development of CCI at a markedly
406 higher frequency than those individuals above the threshold (all $p < 0.05$).

407 Finally, to examine whether ELISpot could improve the discriminatory power of standard
408 clinical indices (SOFA and Charlson comorbidity scores), single and multivariate logistic
409 regression analyses were performed and the AUROCs of the models were calculated by a
410 four-fold cross-validation procedure (**Table 5**). Model I was built on baseline Charlson
411 comorbidity data and day 1 SOFA scores yielding AUROCs for 180-day mortality (0.911
412 [0.858-0.965]); the odds ratios show baseline Charlson comorbidity data and day 1 SOFA
413 scores are significant predictors for 180-day mortality (**Table 5**). Model II was built on
414 stimulated total IFN γ expression from Day 4 yielding AUROCs for 180-day mortality (0.794

415 [0.732-0.855]); the odds ratios show stimulated total IFN γ expression is a significant predictor
416 for 180-day mortality (**Table 5**). Although ELISpot data show significant odds ratios in Model II,
417 the addition of stimulated total IFN γ expression to the model built on standard score indices
418 (Model III) did not significantly increase either the AUROC or the odds ratio for 180-day (0.915
419 [0.851-0.979] or in-hospital mortality (0.883 [0.801-0.964]), or development of CCI (0.861
420 [0.830-0.892]) (**Table 5**).

421 **Discussion**

422 **Key Findings**

423 This prospective, multi-center observational study has demonstrated that the adaptive immune
424 response to critical illness, as defined by *ex vivo* whole blood production of IFN γ in response to
425 T cell receptor stimulation, varied in response to critical illness (**Figures 2, 3**) and could also
426 discriminate long-term outcomes (**Figure 5, Table 3**). Spontaneous IFN γ production by diluted
427 whole blood was significantly increased in critically ill patients, irrespective of whether the
428 critically ill patients were septic. In addition, when whole blood was stimulated *ex vivo* with a T
429 cell receptor agonist, IFN γ production increased dramatically in both healthy and critically ill
430 cohorts (both SEPSIS and CINS). However, stimulated ELISpot IFN γ total expression early in
431 the admission to the ICU significantly differed between septic patients who survived 180 days
432 and those who died, and this reduction in total expression in non-surviving septic patients was
433 due to both reductions in the total number of IFN γ producing blood cells and the amount of
434 IFN γ produced by individual cells (**Figure 4**). Importantly, day 1 and day 4 measurements were
435 more discriminatory than later measurements. Using univariate modeling, stimulated ELISpot

436 total expression measured in the first week of admission (sampling days 1 and 4) could
437 differentiate 180-day mortality as well as SOFA and Charlson comorbidity scores, and
438 markedly better than blood ALC, procalcitonin, IL-6 and sPD-L1 concentrations (**Table 3**).
439 Septic patients who had low stimulated ELISpot total IFN γ expression at days 1 and 4 had an
440 immunosuppressed endotype, as reflected in being older, and having lower ALC counts,
441 higher plasma sPD-L1, and increased incidence of chronic critical illness, in-hospital and late
442 mortality (**Table 4**). However, in multivariate models, stimulated ELISpot total IFN γ expression
443 did not significantly improve the discrimination between 180-day survival in models built with
444 SOFA and Charlson comorbidity scores (**Table 5**).

445 **Context**

446 ELISpot has emerged as a powerful method to assess immunological status in a variety of
447 clinical disorders (27-30), including sepsis and critically ill patients (20,21,31,32). It offers
448 several theoretical advantages over other current metrics – for example, cell phenotypes (such
449 as ALC (33-36) and HLA-DR expression on CD14⁺ blood cells (37,38)), plasma protein
450 concentrations (such as procalcitonin (39-42), IL-6 (43-45) and sPD-L1 (46,47)) or blood
451 transcriptomics (26,48,49) – used to predict both the severity of the host response and the
452 immunosuppressed endotype. ELISpot, unlike these static measures, assesses one
453 component of the functional status of the host protective immune response. In the present
454 study, ELISpot revealed the capacity of T cells in the blood to produce IFN γ with and without
455 stimulation through the T cell receptor.

456 This study is not the first to demonstrate reduced IFN γ ELISpot expression in sepsis patients,
457 especially in those with adverse clinical outcomes (20,21,50). However, in contrast to these

458 previous studies, we used diluted whole blood in our ELISpot assay instead of isolated PBMCs
459 and observed increased IFN γ production in both unstimulated and stimulated whole blood from
460 critically ill patients. There are two key advantages of using diluted whole blood in the ELISpot.
461 First, the use of whole blood permits the assay to take place with the entire blood composition
462 (i.e., all leukocytes, erythrocytes, platelets, and plasma proteins and metabolites) maintained.
463 Responses to critical illness and *ex vivo* stimulation may be either direct or be mediated via
464 cell-cell communication and/or plasma mediators. Traditional processing of blood by density
465 gradient centrifugation separates the PBMC from the neutrophils, platelets, and plasma.
466 Second, it is a simpler and more 'rapid' assay to set up because there is no required cell
467 isolation step.

468 On days 1-7, both the CINS and SEPTIC patients had reduced ALC as compared to healthy
469 controls (**Supplemental Figure 1**). Surprisingly, despite this lymphopenia, the number of
470 lymphocytes spontaneously producing IFN γ was higher in both CINS and SEPSIS patients
471 versus healthy controls at all three time points (**Figure 2**). Day 1 stimulated IFN γ SFU, spot
472 size (SS), and total expression did not differ between cohorts. However, on Day 4, both the
473 number of cells producing IFN γ as well as total expression of IFN γ was higher in both the
474 CINS and SEPSIS cohorts as compared healthy subjects. On Day 7, the number of cells
475 producing IFN γ remained higher in the CINS and SEPSIS cohorts. Of note, the amount of IFN γ
476 produced on a per cell basis (reflected by spot size) was lowest in the SEPSIS cohort with total
477 expression similar to healthy controls.

478 Given the considerable amount of data showing sepsis can evolve into an immunosuppressed
479 state, it was surprising to see both the spontaneous and stimulated IFN γ production increase

480 in septic patients (early after admission) versus healthy subjects. There are several likely
481 explanations for this apparent paradox. The first potential explanation relates to timing;
482 specifically, the data presented herein came from blood samples collected within the first 7
483 days after ICU admission. It is difficult to determine exactly when the sepsis-induced
484 hyperinflammation transitions to a state of immunoparalysis, but it is tempting to speculate that
485 our assessment of immune fitness was still within the window of hyperinflammation and
486 exacerbated immune cell activity.

487 A second explanation has been termed “*bystander activation*” (51,52). The inflammatory
488 response that develops during infection has a capacity to trigger antigen-experienced effector
489 and/or memory CD8⁺ T cells present in a T cell receptor-independent and cytokine-dependent
490 manner. A number of cytokines including IL-12, IL-15, TNF α , and IL-18 induce CD8⁺ T cell
491 activation and resultant IFN γ production (53). Thus, the sepsis cytokine milieu likely primes
492 pre-existing, effector and memory CD8⁺ T cells to produce IFN γ in a cognate antigen-
493 independent fashion (**Figure 2**). In addition, these cytokine-primed effector/memory CD8⁺ T
494 cells will also respond with IFN γ production to a myriad of cytokines produced *ex vivo* during
495 anti-CD3/CD28 stimulation.

496 A third explanation may lie in the differences in the lymphocyte subsets present in the
497 peripheral blood of healthy subjects versus CINS and SEPSIS patients at the time of blood
498 collection. *De novo* clonal expansion of pathogen-specific effector CD8⁺ T cells in response to
499 sepsis-inducing pathogens and resultant inflammation leads the potential for a preponderance
500 of active response effector cells – especially early in the septic timeline. In contrast, healthy
501 control volunteers are more likely to have ‘resting’ naïve and memory T cells and a minimal (if

502 any) increase in inflammatory cytokines. Consequently, the number of T cells capable of
503 rapidly responding to polyclonal and/or bystander cytokine stimulations and produce IFN γ in
504 the ELISpot assay is increased in SEPSIS patients compared with healthy subjects.

505 **Current Work**

506 The current studies add to the body of information suggesting ELISpot examining whole blood
507 production of IFN γ can both discriminate long-term mortality and identify those patients who
508 may benefit from therapeutic interventions targeting adaptive immunity.

509 **Limitations**

510 This study has several limitations. Despite multicenter enrollment, sample sizes were still
511 relatively small for discriminative modeling. Over the past two decades, improved in-hospital
512 management has reduced the number of adverse events and in-hospital mortality to sepsis
513 and critical illness (25,54). Discriminatory analyses could only be conducted in the SEPSIS
514 cohort as CINS patients had very low in-hospital (1%) and 180-day mortality (4%) (**Table 2**).
515 Second, every effort was made to match healthy control subjects to the SEPSIS and CINS
516 cohorts, but the healthy donors used in this study were, as a group, significantly younger and
517 more frequently female (**Table 1**). Median ages in the healthy control cohort were greater than
518 45 years, a break point often determined to be associated with increased adverse outcomes in
519 critically ill patients (25). Despite the multicenter nature of the study, the cohorts still were also
520 predominantly Caucasian.

521 **Future Directions**

522 While the findings presented herein suggest assessing IFN γ production by ELISpot can be

523 useful in identifying sepsis patients at risk of long-term mortality and the immune suppressed
524 endotype, its discriminative ability is similar to SOFA and Charlson comorbidity indices and
525 does not add significantly to their discriminative power. With that said, SOFA and Charlson
526 comorbidity indices are rarely used for clinical decision making because they provide no
527 insights or therapeutic directions into the immunological disturbances associated with sepsis
528 and adverse outcomes. Application of ELISpot to the clinical armamentarium has the potential
529 to provide important information regarding which sepsis patients would benefit from targeted
530 therapy (precision medicine). For example, septic patients who have profound suppression of
531 stimulated IFN γ production may be harmed by therapy with corticosteroids, but might be good
532 candidates for immune adjuvants therapies to boost their ability to combat invading pathogens.
533 ELISpot is an FDA-cleared approach for assessing functional immune status to prior
534 tuberculosis infection and the ELISpot reader used in these studies (CTL S6 Entry) is FDA
535 510(k) cleared. However, to make these results more actionable, ELISpot results will need to
536 be obtained within hours, instead of days. Currently, ELISpot results take at least 24 hours to
537 return, although preliminary data from our consortium suggests the assay can be modified to
538 produce results in less than 12 hours (*Griffith, T and Caldwell, C., manuscript in preparation*).

539 In addition, ELISpot can be readily used to assess other components of the blood innate and
540 adaptive immune response simply by varying the stimulant and the readout metric. For
541 example, innate immune responses have been readily assessed using endotoxin or other TLR
542 ligands as a whole blood stimulant and TNF α as the readout (20,21). Furthermore, underlying
543 mechanisms of adaptive or innate immune responses can be explored using alternative
544 stimulants (30,31,55), simultaneous adjuvants or inhibitors (56), or different readout metrics
545 (21,55).

546 **Conclusions**

547 ELISpot can assess functional immune status in critically ill patients, predict adverse long-term
548 outcomes, and identify subsets of patients who may benefit from immunostimulant therapy.

549 **Contributions:**

550 **University of Florida**

551 **EAB** –Investigation, Visualization, Writing-Review and Editing; **PAE**- Resources, Funding
552 Acquisition, Supervision, Writing-Review and Editing; **ML**-Investigation, Visualization; **LEB**-
553 Supervision, Investigation, Writing-Review and Editing; **TL**- Supervision, Investigation, Writing-
554 Review and Editing; **VP**- Investigation, Visualization, **LLM**- Conceptualization, Funding
555 Acquisition, Resources, Supervision, Project Administration, Writing-Review and Editing; **RU**-
556 Supervision, Investigation, Visualization, **JPL**- Supervision, Investigation, **MD**-Investigation,
557 Visualization, **LZS**-Investigation, Visualization, **RD**-Investigation, **AM**-Investigation

558 **University of Iowa**

559 **EES**– Investigation, Visualization; **MH**– Investigation, Visualization; **PMcG** –
560 Conceptualization, Project Administration; **MR**– Investigation, Visualization; **VPB**–
561 Conceptualization, Funding Acquisition, Resources, Supervision, Writing-Review and Editing

562 **University of Minnesota**

563 **RWG** – Conceptualization, Project administration; **TSG**– Conceptualization, Funding,
564 Acquisition, Resources, Supervision, Writing–Review and Editing; **LH**– Project Administration;
565 **TAK**– investigation, visualization; **CN**– project administration; **JX**– investigation, visualization.

566 **Washington University in St. Louis**

567 **RSH**- Conceptualization, Funding, Acquisition, Resources, Supervision, Writing–Review and
568 Editing; **DDT**- Investigation, **AD**- Investigation, **SM1**-Investigation, **SM2**-Investigation, **IT**-
569 Conceptualization, Supervision, Writing-Review and Editing

570 **University of Washington**

571 **SB**- Conceptualization, Funding, Writing–Review and Editing

572 **University of Cincinnati**

573 **CCC**- Conceptualization, Funding, Acquisition, Resources, Supervision, Writing–Review and
574 Editing; **MDG**- Acquisition, Investigation, Visualization, Supervision. **CBB** – Acquisition,
575 Investigation

576 **Case Western Reserve University**

577 **MBM**- Conceptualization, Supervision, Investigation, Writing-Review and Editing; **KR**-
578 Conceptualization, Investigation, Acquisition, Writing-Review and Editing.

579

580

581 **Acknowledgements:** This work was directly supported by R01 GM-132364, awarded by the
582 National Institute of General Medical Sciences, including a supplement (R01 GM-132364-
583 03S1) in 2022-2024.

584 Additional support was provided by grants T32 GM-008721 (EAB, VP, PAE), RM1 GM-139690
585 (LLM, PAE), R01 GM-149657 (TL), R01 GM-124156 (MDG), R35 GM-140806 (PAE), R35 GM-
586 133756 (IT), R35 GM-134880 (VB), R35 GM-134880 (SB), R35 GM1-40881 (TSG), R35 GM-
587 12698 (RSH), all from the National Institute of General Medical Sciences, G102983-
588 6263608307-1 (MDG) from Department of Defense, IK6BX006192 from the Department of
589 Veteran Affairs (TSG), and BE 7016/1-1 (CD) from the Deutsche Forschungsgemeinschaft
590 (German Research Foundation) .

591 The authors also wish to gratefully acknowledge the patients and their families for their
592 willingness to participate in an observational clinical study with no direct benefit to them.

593

594 **References**

- 595 1. Bauer M, et al. Mortality in sepsis and septic shock in Europe, North America and
596 Australia between 2009 and 2019- results from a systematic review and meta-analysis. *Crit*
597 *Care*. 2020;24(1):239.
- 598 2. Cecconi M, et al. Sepsis and septic shock. *Lancet*. 2018;392(10141):75-87.
- 599 3. Hotchkiss RS, et al. Sepsis and septic shock. *Nat Rev Dis Primers*. 2016;2:16045.
- 600 4. Singer M, et al. The Third International Consensus Definitions for Sepsis and Septic
601 Shock (Sepsis-3). *JAMA*. 2016;315(8):801-10.
- 602 5. Silva EE, et al. The Calm after the Storm: Implications of Sepsis Immunoparalysis on
603 Host Immunity. *J Immunol*. 2023;211(5):711-719.
- 604 6. Darden DB, et al. Biomarker Evidence of the Persistent Inflammation,
605 Immunosuppression and Catabolism Syndrome (PICS) in Chronic Critical Illness (CCI) After
606 Surgical Sepsis. *Ann Surg*. 2021;274(4):664-673.
- 607 7. Efron PA, et al. The Persistent Inflammation, Immunosuppression, and Catabolism
608 Syndrome (PICS) Ten Years Later [published online August 8, 2023]. *J Trauma Acute Care*
609 *Surg*. doi: 10.1097/TA.0000000000004087.
- 610 8. de Nooijer AH, et al. Complement activation in severely ill patients with sepsis: no
611 relationship with inflammation and disease severity. *Crit Care*. 2023;27(1):63.
- 612 9. Roth WJ, et al. Characterization of two distinct transglutaminases of murine bone

- 613 marrow-derived macrophages: effects of exposure of viable cells to cigarette smoke on
614 enzyme activity. *J Leukoc Biol.* 1987;42(1):9-20.
- 615 10. van Oosterom A, Huiskamp GJ. The effect of torso inhomogeneities on body surface
616 potentials quantified using "tailored" geometry. *J Electrocardiol.* 1989;22(1):53-72.
- 617 11. van der Poll T, et al. The immunopathology of sepsis and potential therapeutic targets.
618 *Nat Rev Immunol.* 2017;17(7):407-420.
- 619 12. van der Poll T, et al. The immunology of sepsis. *Immunity.* 2021;54(11):2450-2464.
- 620 13. Cox MC, et al. The impact of sarcopenia and acute muscle mass loss on long-term
621 outcomes in critically ill patients with intra-abdominal sepsis. *J Cachexia Sarcopenia Muscle.*
622 2021;12(5):1203-1213.
- 623 14. Zhang W, et al. CMV Status Drives Distinct Trajectories of CD4+ T Cell Differentiation.
624 *Front Immunol.* 2021;12:620386.
- 625 15. Rincon JC, et al. Immunopathology of chronic critical illness in sepsis survivors: Role of
626 abnormal myelopoiesis. *J Leukoc Biol.* 2022;112(6):1525-1534.
- 627 16. Maslove DM, et al. Redefining critical illness. *Nat Med.* 2022;28(6):1141-1148.
- 628 17. Fenner BP, et al. Immunological Endotyping of Chronic Critical Illness After Severe
629 Sepsis. *Front Med (Lausanne).* 2020;7:616694.
- 630 18. Scicluna BP, et al. Classification of patients with sepsis according to blood genomic
631 endotype: a prospective cohort study. *Lancet Respir Med.* 2017;5(10):816-826.

- 632 19. Balch JA, et al. Defining critical illness using immunological endotypes in patients with
633 and without sepsis: a cohort study. *Crit Care*. 2023;27(1):292.
- 634 20. Loftus TJ, et al. Overlapping but Disparate Inflammatory and Immunosuppressive
635 Responses to SARS-CoV-2 and Bacterial Sepsis: An Immunological Time Course Analysis.
636 *Front Immunol*. 2021;12:792448.
- 637 21. Mazer MB, et al. A Whole Blood Enzyme-Linked Immunospot Assay for Functional
638 Immune Endotyping of Septic Patients. *J Immunol*. 2021;206(1):23-36.
- 639 22. Bossuyt PM, et al. The STARD statement for reporting studies of diagnostic accuracy:
640 explanation and elaboration. *Ann Intern Med*. 2003;138(1):W1-12.
- 641 23. Gardner AK, et al. The Development of Chronic Critical Illness Determines Physical
642 Function, Quality of Life, and Long-Term Survival Among Early Survivors of Sepsis in Surgical
643 ICUs. *Crit Care Med*. 2019;47(4):566-573.
- 644 24. Jouffroy R, et al. Relationship between prehospital modified Charlson Comorbidity Index
645 and septic shock 30-day mortality. *Am J Emerg Med*. 2022;60:128-133.
- 646 25. Brakenridge SC, et al. Current Epidemiology of Surgical Sepsis: Discordance Between
647 Inpatient Mortality and 1-year Outcomes. *Ann Surg*. 2019;270(3):502-510.
- 648 26. Brakenridge SC, et al. Evaluation of a Multivalent Transcriptomic Metric for Diagnosing
649 Surgical Sepsis and Estimating Mortality Among Critically Ill Patients. *JAMA Netw Open*.
650 2022;5(7):e2221520.
- 651 27. Albareda MC, et al. Distinct Treatment Outcomes of Antiparasitic Therapy in

- 652 Trypanosoma cruzi-Infected Children Is Associated With Early Changes in Cytokines,
653 Chemokines, and T-Cell Phenotypes. *Front Immunol.* 2018;9:1958.
- 654 28. Shin KH, et al. CMV specific T cell immunity predicts early viremia after liver
655 transplantation. *Transpl Immunol.* 2018;51:62-65.
- 656 29. Remy KE, et al. Severe immunosuppression and not a cytokine storm characterizes
657 COVID-19 infections. *JCI Insight.* 2020;5(17)
- 658 30. Puertas MC, et al. VIP-SPOT: an Innovative Assay To Quantify the Productive HIV-1
659 Reservoir in the Monitoring of Cure Strategies. *mBio.* 2021;12(3):e0056021.
- 660 31. Bonavia AS, et al. Comparison of Rapid Cytokine Immunoassays for Functional
661 Immune Phenotyping. *Front Immunol.* 2022;13:940030.
- 662 32. Beckmann N, et al. Staging and Personalized Intervention for Infection and Sepsis.
663 *Surg Infect (Larchmt).* 2020;21(9):732-744.
- 664 33. Podd BS, et al. Early, Persistent Lymphopenia Is Associated With Prolonged Multiple
665 Organ Failure and Mortality in Septic Children. *Crit Care Med.* 2023;
- 666 34. Denstaedt SJ, et al. Blood count derangements after sepsis and association with post-
667 hospital outcomes. *Front Immunol.* 2023;14:1133351.
- 668 35. Drewry AM, et al. Persistent lymphopenia after diagnosis of sepsis predicts mortality.
669 *Shock.* 2014;42(5):383-91.
- 670 36. Zidar DA, et al. Association of Lymphopenia With Risk of Mortality Among Adults in the

- 671 US General Population. *JAMA Netw Open*. 2019;2(12):e1916526.
- 672 37. Bidar F, et al. Concomitant Assessment of Monocyte HLA-DR Expression and Ex Vivo
673 TNF-alpha Release as Markers of Adverse Outcome after Various Injuries-Insights from the
674 REALISM Study. *J Clin Med*. 2021;11(1)
- 675 38. Bodinier M, et al. Monocyte Trajectories Endotypes Are Associated With Worsening in
676 Septic Patients. *Front Immunol*. 2021;12:795052.
- 677 39. Uzzan B, et al. Procalcitonin as a diagnostic test for sepsis in critically ill adults and after
678 surgery or trauma: a systematic review and meta-analysis. *Crit Care Med*. 2006;34(7):1996-
679 2003.
- 680 40. Prkno A, et al. Procalcitonin-guided therapy in intensive care unit patients with severe
681 sepsis and septic shock--a systematic review and meta-analysis. *Crit Care*. 2013;17(6):R291.
- 682 41. Wirz Y, et al. Effect of procalcitonin-guided antibiotic treatment on clinical outcomes in
683 intensive care unit patients with infection and sepsis patients: a patient-level meta-analysis of
684 randomized trials. *Crit Care*. 2018;22(1):191.
- 685 42. Andriolo BN, et al. Effectiveness and safety of procalcitonin evaluation for reducing
686 mortality in adults with sepsis, severe sepsis or septic shock. *Cochrane Database Syst Rev*.
687 2017;1(1):CD010959.
- 688 43. Tocu G, et al. The Contribution of Procalcitonin, C-Reactive Protein and Interleukin-6 in
689 the Diagnosis and Prognosis of Surgical Sepsis: An Observational and Statistical Study. *J*
690 *Multidiscip Healthc*. 2023;16:2351-2359.

- 691 44. Patel RT, et al. Interleukin 6 is a prognostic indicator of outcome in severe intra-
692 abdominal sepsis. *Br J Surg*. 1994;81(9):1306-8.
- 693 45. Casey LC, et al. Plasma cytokine and endotoxin levels correlate with survival in patients
694 with the sepsis syndrome. *Ann Intern Med*. 1993;119(8):771-8.
- 695 46. Zeng C, et al. Predictive Value of Soluble Programmed Cell Death Ligand-1 in the
696 Progression of Septic Patients to Chronic Critical Illness in the Intensive Care Unit: A
697 Prospective Observational Clinical Study. *Shock*. 2023;60(2):163-171.
- 698 47. Derigs M, et al. Soluble PD-L1 in blood correlates positively with neutrophil and
699 negatively with lymphocyte mRNA markers and implies adverse sepsis outcome. *Immunol*
700 *Res*. 2022;70(5):698-707.
- 701 48. Kostaki A, et al. A 29-Mrna Host Response Whole-Blood Signature Improves Prediction
702 of 28-Day Mortality and 7-Day Intensive Care Unit Care in Adults Presenting to the Emergency
703 Department with Suspected Acute Infection and/or Sepsis. *Shock*. 2022;58(3):224-230.
- 704 49. Galtung N, et al. Prospective validation of a transcriptomic severity classifier among
705 patients with suspected acute infection and sepsis in the emergency department. *Eur J Emerg*
706 *Med*. 2022;29(5):357-365.
- 707 50. Haem Rahimi M, et al. Fully automated interferon-gamma release assay to monitor
708 antigen-independent T cell functionality: A proof of concept study in septic shock. *Cytokine*.
709 2023;169:156263.
- 710 51. Kim TS, Shin EC. The activation of bystander CD8(+) T cells and their roles in viral

711 infection. *Exp Mol Med*. 2019;51(12):1-9.

712 52. Martin MD, et al. Bystander responses impact accurate detection of murine and human
713 antigen-specific CD8 T cells. *J Clin Invest*. 2019;129(9):3894-3908.

714 53. Freeman BE, et al. Regulation of innate CD8+ T-cell activation mediated by cytokines.
715 *Proc Natl Acad Sci U S A*. 2012;109(25):9971-6.

716 54. Cox MC, et al. Abdominal sepsis patients have a high incidence of chronic critical illness
717 with dismal long-term outcomes. *Am J Surg*. 2020;220(6):1467-1474.

718 55. Malewicz NM, et al. Early suppression of peripheral mononuclear blood cells in sepsis
719 in response to stimulation with cytomegalovirus, OKT3, and pokeweed mitogen. *J Appl Physiol*
720 (1985). 2019;127(6):1539-1547.

721 56. Mazer M, et al. IL-10 Has Differential Effects on the Innate and Adaptive Immune
722 Systems of Septic Patients. *J Immunol*. 2019;203(8):2088-2099.

723

724 **Table 1. Clinical Characteristics of Patient Cohorts and Healthy Control Subjects.**
 725 Patients included two cohorts of individuals admitted to the ICU, one presumed to be septic
 726 (SEPSIS), a second presumed to not be septic, but critically ill and at risk of developing sepsis
 727 (CINS). Values are obtained at time of admission to the ICU.

	CINS (n=68)	SEPSIS (n=107)	Healthy Control (n=46)	p value
Male [n (%)]	37 (54%)	62 (58%)	16 (35%)	0.0283
Age, years	59 (37, 67)	63 (51, 71)	47 (30, 62)	<0.0001
BMI, kg/m²	27.3 (22.8, 33.9)	28.0 (22.7, 34.8)	N/C	0.718
SOFA Score	6 (4, 8)	6 (4, 10)	N/C	0.718
Charlson Comorbidity Score	2 (0, 4)	3 (1, 4)	2 (0, 2); n=19	0.0045
Total Leukocyte Counts				
WBC (x10 ³ /μl)	9.3 (7.2, 12.6)	12.8 (8.9, 18.6)	6.5 (5.5, 7.5)	<0.0001
Monocytes (%)	6.9 (5.2, 9.2)	4.6 (3.0, 7.1)	6.9 (6.1, 8.0)	<0.0001
Monocytes (x10 ³ /μl)	0.7 (0.4, 0.9)	0.7 (0.4, 1.0)	0.4 (0.4, 0.6)	0.0210
Neutrophils (%)	78.1 (71.9, 86.3)	86.1 (81.5, 91.4)	10.9 (7.7, 15.9)	<0.0001
Neutrophils (x10 ³ /μl)	7.2 (5.1, 10.6)	59 (55.2, 64.3)	3.7 (2.8, 4.6)	<0.0001
Lymphocytes (%)	12.4 (7.2, 17.5)	6.0 (4.3, 9.0)	29.4 (25.6, 35.2)	<0.0001
Lymphocytes (x10 ³ /μl)	1.0 (0.7, 1.4)	0.8 (0.5, 1.2)	1.9 (1.5, 2.3)	<0.0001
Plasma Proteins				
IL-10 (pg/ml)	18.3 (14.7, 20.7)	20.0 (14.8, 26.3)	17.4 (13.6, 20.8)	0.059
IL-6 (pg/ml)	35.5 (14.2, 155.9)	42.2 (19.9, 101.9)	5.83 (5.05, 6.92)	<0.0001
sPD-L1 (pg/ml)	157 (100, 229)	204.7 (125.0, 311.7)	78.5 (66.5, 93.7)	<0.0001
Procalcitonin (ng/ml)				

728 **N/C**, not collected

729

730 **Table 2. Clinical Course and Clinical Outcomes in SEPSIS and CINS cohorts.**

	CINS (n=68)	SEPSIS (n=107)	p value
LOS, days	10 (7, 14), n=66	13 (7, 21), n=106	0.016
ICU LOS, days	5 (3, 9), n=67	4 (2, 10)	0.904
Secondary infection	17 (29%)	52 (59%)	0.0003
Favorable discharge	52 (76%)	61 (57%)	0.0018
CCI	3 (4%)	15 (14%)	0.074
In-Hospital Mortality	1 (1.5%)	14 (13%)	
30-Day Mortality		12 (11%)	
180-Day Mortality		18 (17%)	
Disposition at discharge			
Home	25 (37%)	27 (25%)	0.104
LTAC	0	4 (3.7%)	0.017
IPR	17 (25%)	12 (11%)	0.104
Hospital	0	2 (1.9%)	0.406
Other	2 (2.9%)	2 (1.9%)	0.319
SNF	10 (15%)	21 (20%)	0.007
Residential facility	0	0	
Home with services	10 (15%)	21 (20%)	0.843
AMA	2 (2.9%)	1 (0.93%)	
Death	1 (1.5%)	14 (13%)	
Hospice facility	1 (1.5%)	2 (1.9%)	
Home with hospice	0	1 (0.93%)	

731 *Sample sizes are identified in column headings except where missing values are noted for*
 732 *specific indices.*

733

734 LOS, length of hospital stay

- 735 LICUS, length of ICU stays
- 736 CCI, chronic critical illness
- 737 LTAC, long term acute care facility
- 738 IPR, inpatient rehabilitation
- 739 SNF, specialized nursing facility
- 740 AMA, discharged against medical advice
- 741

742 **Table 3. Selected Area Under the Receiver Operating Curve Discrimination for Primary**
 743 **Outcome Variables in the SEPSIS cohorts.** Values represent the mean and 95% confidence
 744 intervals for the primary outcome variables: 180-Day Mortality, In-Hospital Mortality, Incidence
 745 of Secondary Infection, Development of Chronic Critical Illness (CCI).
 746

Criterion	Time Point	180-day mortality	In-Hospital Mortality	Secondary Infection	CCI
Age	Baseline	0.68 (0.54,0.81)	0.42 (0.28,0.57)	0.48 (0.35,0.60)	0.62 (0.46,0.77)
Charlson Comorbidity Score	Baseline	0.82 (0.70,0.95)	0.76 (0.61,0.91)	0.55 (0.43,0.67)	0.71 (0.59,0.83)
SOFA	Baseline	0.72 (0.57,0.88)	0.72 (0.55,0.88)	0.59 (0.46,0.71)	0.65 (0.49,0.81)
	Day 1	0.76 (0.62,0.90)	0.76 (0.60,0.92)	0.65 (0.53,0.77)	0.76 (0.66,0.87)
	Day 4	0.79 (0.65,0.93)	0.83 (0.67,0.98)	0.68 (0.56,0.80)	0.84 (0.74,0.93)
ELIspot Stimulated IFN γ TE	Day 1	0.73 (0.60,0.86)	0.69 (0.55,0.84)	0.56 (0.44,0.69)	0.60 (0.45,0.75)
	Day 4	0.79 (0.69,0.90)	0.74 (0.61,0.87)	0.51 (0.37,0.65)	0.62 (0.43,0.81)
ELIspot Stimulated IFN γ SFU	Day 4	0.74 (0.60,0.88)	0.65 (0.47,0.84)	0.52 (0.39,0.66)	0.64 (0.47,0.82)
ELIspot Stimulated IFN γ SS	Day 1	0.71 (0.57,0.85)	0.68 (0.51,0.85)	0.56 (0.44,0.69)	0.56 (0.41,0.71)
	Day 4	0.66 (0.53,0.79)	0.70 (0.55,0.85)	0.60 (0.47,0.73)	0.52 (0.36,0.68)
% Lymphocytes Stimulated IFN γ TE	Day 1	0.68 (0.53,0.83)	0.62 (0.42,0.81)	0.58 (0.45,0.71)	0.53 (0.38,0.69)
	Day 4	0.60 (0.45,0.76)	0.54 (0.32,0.75)	0.65 (0.52,0.78)	0.58 (0.34,0.71)
Absolute lymphocyte count	Day 1	0.63 (0.45,0.81)	0.53 (0.31,0.75)	0.58 (0.50,0.72)	0.46 (0.27,0.65)
	Day 4	0.67 (0.52,0.81)	0.64 (0.48,0.80)	0.64 (0.51,0.77)	0.65 (0.47,0.84)
sPD-L1	Day 4	0.67 (0.53,0.80)	0.68 (0.52,0.84)	0.59 (0.45,0.73)	0.57 (0.38,0.77)
IL-6	Day 4	0.63 (0.47,0.79)	0.56 (0.37,0.75)	0.64 (0.50,0.77)	0.62 (0.43,0.8)
IL-10	Day 4	0.62 (0.45,0.79)	0.51 (0.31,0.72)	0.60 (0.46,0.73)	0.57 (0.43,0.71)
IL-8/CXCL8	Day 4	0.60 (0.45,0.75)	0.64 (0.49,0.79)	0.46 (0.33,0.60)	0.68 (0.54,0.83)

747 **Scores in bold are values equal to or greater than 0.74**

748 TE, total expression

749 SFU, number of spot forming units

750 SS, spot size

751

752 **Table 4. Evidence of Immunosuppression in SEPSIS Patients with Reduced Stimulated**
 753 **IFN γ Total Expression (TE) As Discriminated by ELISpot at Days 1 and 4 Post-ICU**
 754 **Admission.** The threshold for reduced TE was set at 80% sensitivity. On day 1 the specificity
 755 was 42.1% and on day 4 the specificity was 63.2%.

756

Day 1	ELISpot IFNγ TE <2334/μm^2 N=65	ELISpot IFNγ TE \geq2334 (μm^2) N=40	P-value
Age	64.2 (14.7)	54.6 (15.1)	0.002
Total WBC cell day 1 (x 10 ³ /ml)	13.9 (7.07)	15.7 (7.77)	0.158
Absolute Lymphocyte Count Day 1 (/ μl^3)	980 (249)	1460 (600)	0.028
sPD-L1 day 1 (pg/ml)	315 (333)	263 (246)	0.311
IL-10, day 1 (pg/ml)	32.3 (70.0)	28.6 (37.7)	0.608
Outcome			Odds-ratio
180-day mortality	23.1%	7.5%	3.70 (1.00,13.7)
In-Hospital mortality	18.5%	5.0%	4.30 (0.91,20.3)
CCI	18.5%	7.5%	2.79 (0.74,10.6)
Second Infection	59.6% (6 missing)	58.8% (13 missing)	1.03 (0.43,2.49)

757

758

Day 4	ELISpot IFNγ TE <1755/μm^2 N=41	ELISpot IFNγ TE \geq1755 (μm^2) N=51	P-value
Age	66.2(14.0)	58.1(15.7)	0.011

Total WBC cell day 1 (x 10 ³ /ml)	13.6(6.93)	15.4(8.18)	0.305
Absolute Lymphocyte Count Day 1 (/ml ³)	70.7 (197)	191 (580)	0.006
sPD-L1 day 1 (pg/ml)	337(248)	239(290)	0.007
IL-10, day 1 (pg/ml)	42.7(89.9)	24.0(27.7)	0.086
Outcome			Odds-ratio
180-day mortality	29.3%	5.9%	6.62 (1.72,25.5)
In-Hospital mortality	19.5%	5.9%	3.88 (0.96,15.7)
CCI	22.0%	7.8%	3.30 (0.94,11.7)
Second Infection	58.8% (12 missing)	56.4% (7 missing)	1.10 (0.44,2.80)

759

760

761 **Table 5. Multivariate Logistic Regression to Discriminate Time to Mortality based on**
762 **Charlson Comorbidity and SOFA Scores and Day 4 ELISpot Stimulated IFN γ Total**
763 **Expression in SEPSIS Patients.**

764

	Odds ratio	p value
Model I: Standard clinical indices only		
SOFA score Day 4	1.30 (1.12-1.50)	0.0003
Charlson comorbidity score (CCS) baseline	1.48 (1.24-1.77)	<0.0001
Model II: ELISpot indices only		
ELISpot IFNγ TE Day 4 (Negative of log)	1.44 (1.07-1.95)	0.017
Model III: Standard clinical indices + ELISpot indices		
SOFA score Day 4	1.28 (1.11-1.49)	0.0008
Charlson comorbidity score (CCS) baseline	1.48 (1.22-1.79)	<0.0001
ELISpot IFNγ TE Day 4 (Negative of log)	1.29 (0.90-1.85)	0.165

765

766

767

768 **Supplementary Table 1. Demographics and Outcomes Between SEPSIS Patients who**
 769 **Survived or Died Within 180 Days after Sepsis.** Values represent the number of sample
 770 measurements for each analyte.

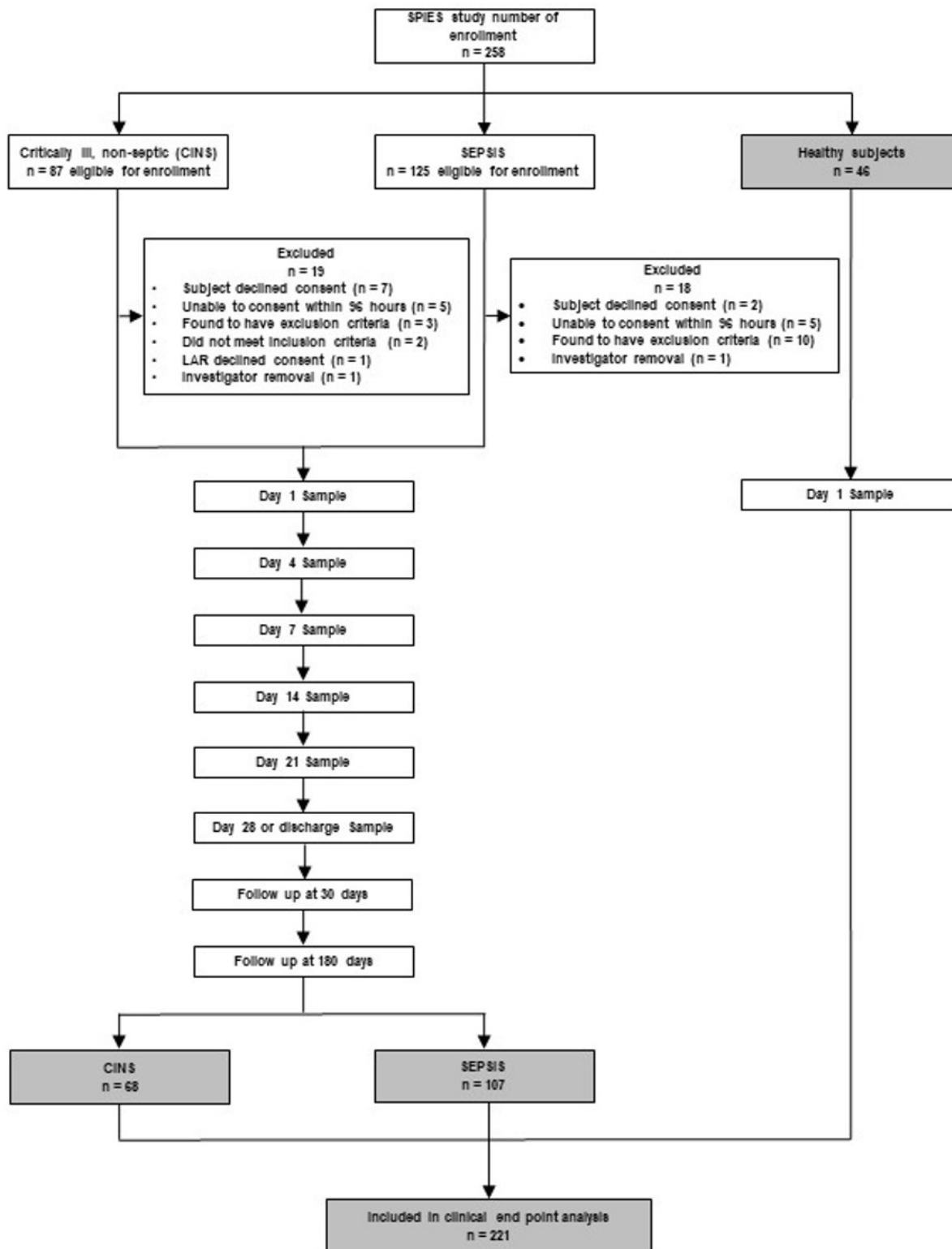
	Survivors, n=89	Non-Survivors, n=18	p value
Male [n (%)]	53 (60%)	9 (50%)	0.454
Age, years	62 (48, 70)	66 (59, 80)	0.0166
BMI, kg/m²	28.0 (22.8, 34.9)	25.5 (21.3, 34.6)	0.490
SOFA Score	6 (4, 8)	10 (5, 11)	0.0236
Charlson Comorbidity Score	2 (1, 4)	6 (4, 7)	<0.0001
Total Leukocyte Counts	Survivors, n=82	Non-Survivors, n=17	
WBC (x10³/μl)	12.9 (9.6, 19.0), n=85	11.0 (8.1, 17.0), n=18	0.371
Monocytes (%)	4.6 (3.1, 7.5), n=84	4.7 (2.6, 6.0)	0.645
Monocytes (x10³/μl)	0.7 (0.4, 1.0)	0.4 (0.3, 1.0)	0.264
Neutrophils (%)	86.1 (81.5, 91.4), n=81	85.0 (80.6, 90.9)	0.729
Neutrophils (x10³/μl)	11.0 (8.0, 17.0)	8.8 (6.8, 13.4)	0.158
Lymphocytes (%)	6.5 (4.3, 9.4), n=84	5.9 (5.3, 8.5)	0.980
Lymphocytes (x10³/μl)	0.8 (0.5, 1.2), n=84	0.7 (0.5, 1.3)	0.684
Plasma Proteins	Survivors, n=86	Non-Survivors, n=18	
IL-10 (pg/ml)	19.7 (14.8, 26.3)	21.2 (16.3, 29.1)	0.578
IL-6 (pg/ml)	48.9 (20.0, 187.9)	60.3 (25.9, 149.2)	0.730
sPD-L1 (pg/ml)	190 (117, 303)	275 (181, 403)	0.144
Procalcitonin (ng/ml)	993 (254, 3254)	1106 (298, 1810)	0.487
Clinical Outcomes	Survivors, n=89	Non-Survivors, n=18	p value

LOS, days	13 (8, 20), n=88	14 (7, 20)	0.812
ICU LOS, days	4 (2, 9)	6 (2, 15)	0.551
Secondary infection	42 (58%), n=73	10 (67%), n=15	0.512
Favorable discharge	59 (66%)	2 (11%)	0.00002
CCI	10 (11%)	5 (28%)	0.0652
In-Hospital Mortality	1 (1%)	13 (72%)	<0.00001
30-Day Mortality	0	12 (70%)	<0.00001
180-Day Mortality	0	18 (100%)	
Disposition at discharge			
Home	26 (29%)	1 (6%)	0.035
LTAC	4 (4%)	0	
IPR	11 (12%)	1 (6%)	0.404
Hospital	2 (2%)	0	
Other	2 (2%)	0	
SNF	19 (21%)	2 (11%)	0.319
Residential facility	0	0	
Home with services	21 (24%)	0	
AMA	1 (1%)	0	
Death	1 (1%)	13 (72%)	<0.00001
Hospice facility	2 (2%)	0	
Home with hospice	0	1 (6%)	

771

772

773 **Figure 1. Flow Diagram for Study Enrollment**



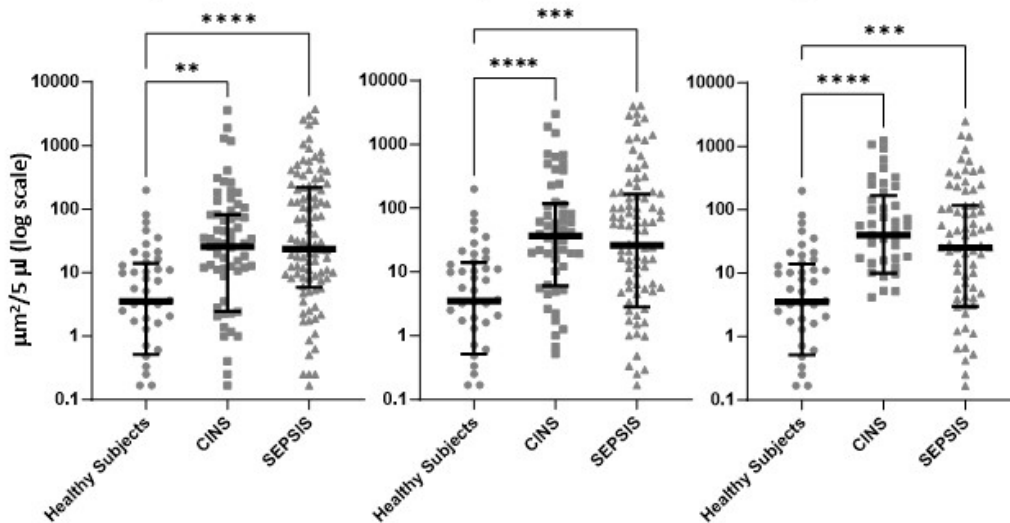
776 **Figure 2. Unstimulated and Stimulated IFN γ Expression as Determined by ELISpot in**
777 **SEPSIS and CINS Patients, and Healthy Control Subjects on Days 1, 4, and 7 Following**
778 **ICU Admission.** Values represent medians and individual subject responses. Panels A, B, C
779 are from unstimulated whole blood while Panels D, E, F are antiCd3/CD28 stimulated whole
780 blood. Note that the scales for unstimulated expression are logarithmic, whereas they are
781 linear for stimulated expression to appropriately reflect the magnitude and heterogeneity of the
782 individual response. * p< 0.05, ** p<0.01, ***p<0.001, ****p<0.0001 as determined by Kruskal-
783 Wallace ANOVA and post-hoc analyses using the Dunn test. Values are two sided and
784 represent raw p values. SFU, spot forming units. SS, spot size. TE, total IFN γ expression.

Unstimulated ELISpot Total IFN γ Expression (TE)

A. Day 1

B. Day 4

C. Day 7

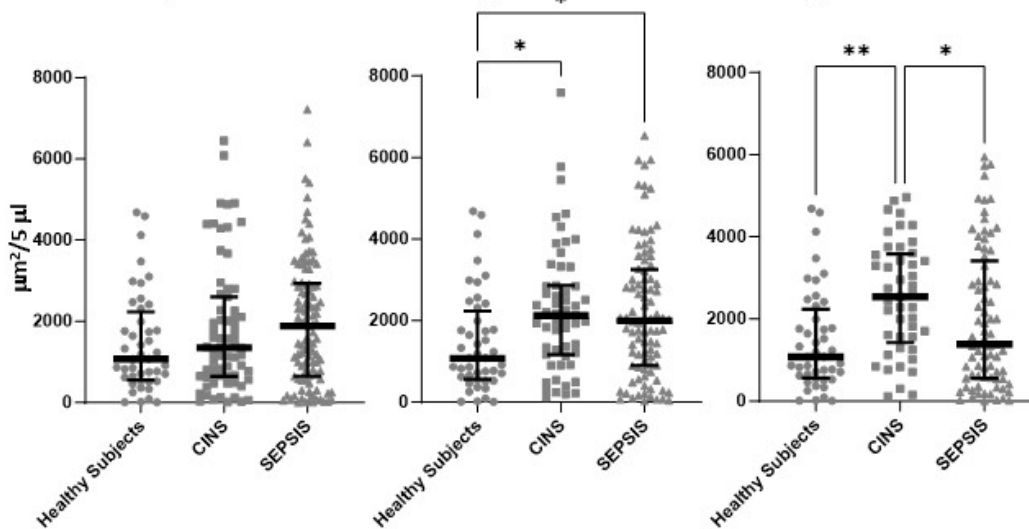


Stimulated ELISpot Total IFN γ Expression (TE)

D. Day 1

E. Day 4

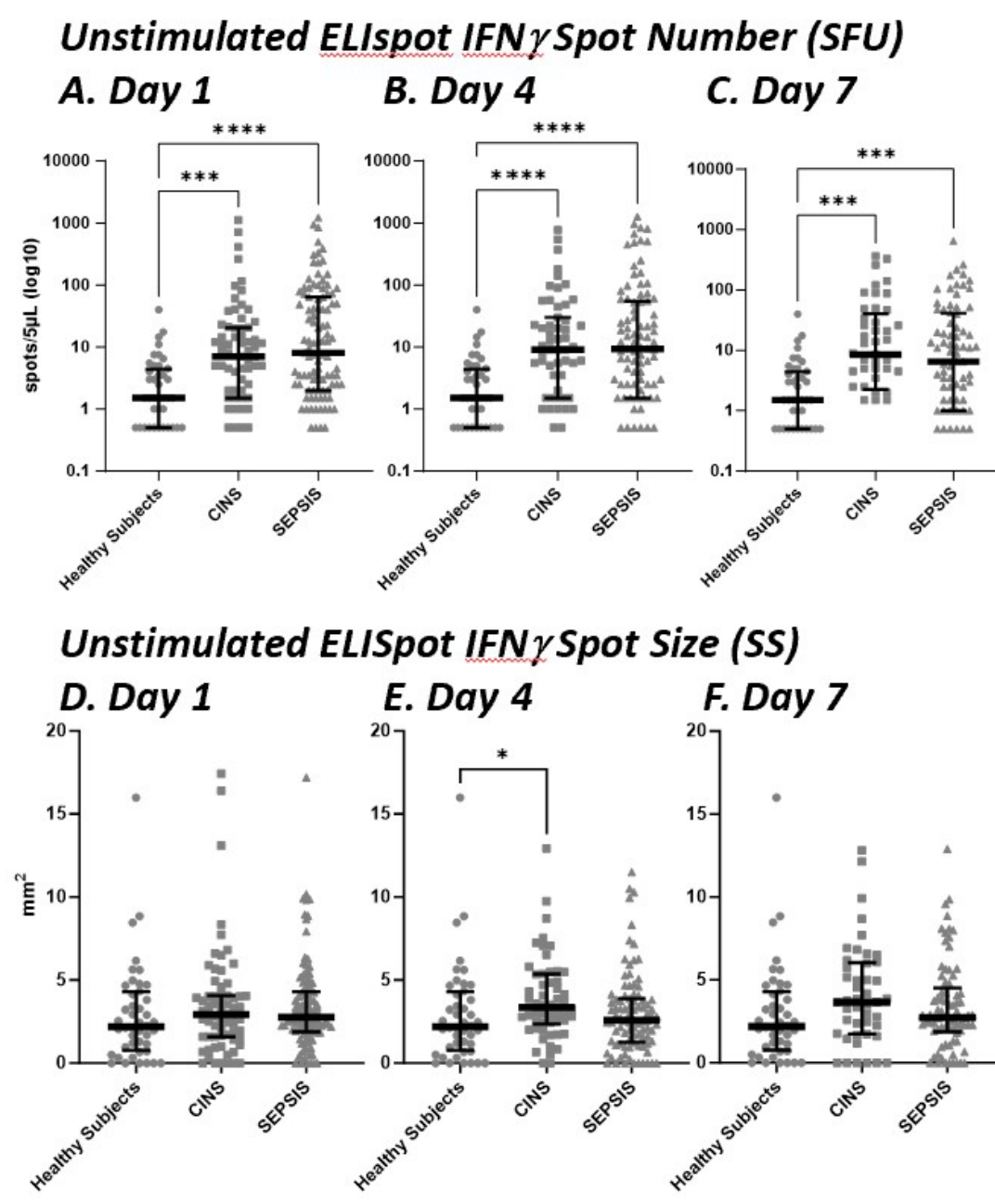
F. Day 7



785

786

787 **Figure 3 – ELISpot Spot Forming Units (SFU) (Panels A, B, C) and Spot Size (SS) (Panels**
788 **D, E, F) from Unstimulated Whole Blood in the Three Cohorts (Healthy Subjects, SEPSIS**
789 **and CINS).** In unstimulated whole blood, SEPSIS and CINS cohorts demonstrated a
790 consistent increase in the number of cells (SFU) producing IFN γ , when compared to healthy
791 subjects. * $p < 0.05$, *** $p < 0.001$, **** $p < 0.0001$, as determined by Kruskal-Wallis ANOVA and
792 post-hoc analyses using the Dunn test. Values are two sided and represent raw p values.
793 SFU, spot forming units. SS, spot size. TE, total IFN γ expression.

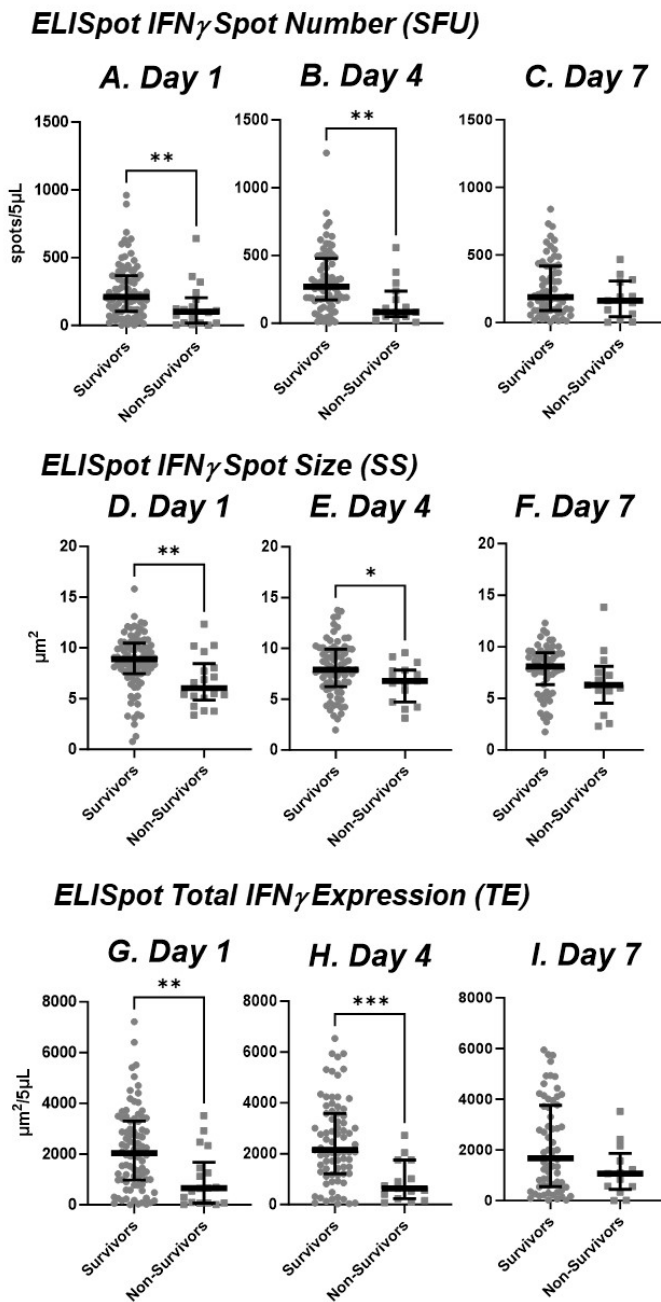


794

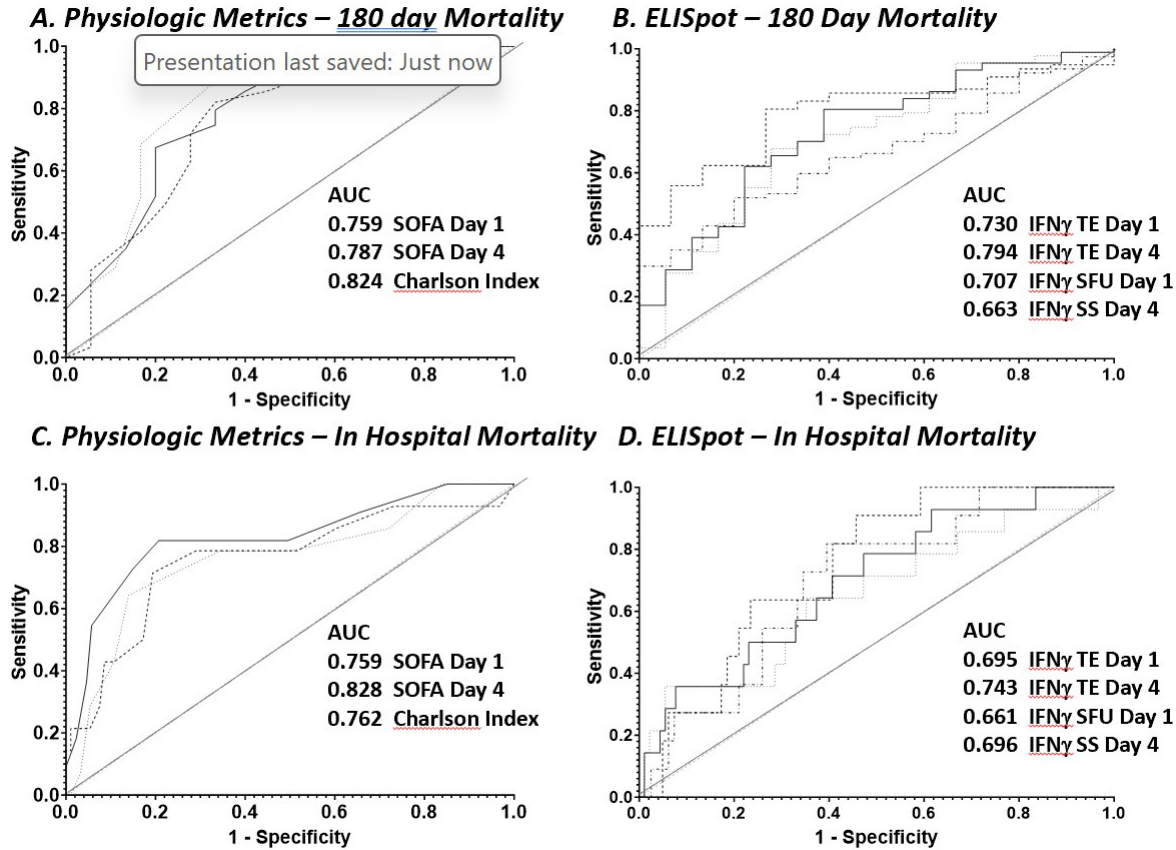
795

796

797 **Figure 4. Anti-CD3/CD28 Stimulated IFN γ Expression by ELISpot in Sepsis Patients**
798 **Measured at 1, 4 and 7 Days after ICU Admission who Survived or Did Not Survive by**
799 **180 days.** Panels A, B, C reflect spot number, D, E, F, spot size, and G, H, I, total IFN γ
800 expression. Values represent medians and individual subject responses. The number of
801 subjects declines over time as patients are either discharged from ICU or die. * $p < 0.05$, **
802 $p < 0.01$, *** $p < 0.001$, **** $p < 0.0001$ as determined by Kruskal-Wallis ANOVA and post-hoc
803 analyses using the Dunn test. Values are two sided and represent raw p values. SFU, spot
804 forming units. SS, spot size. TE, total IFN γ expression.



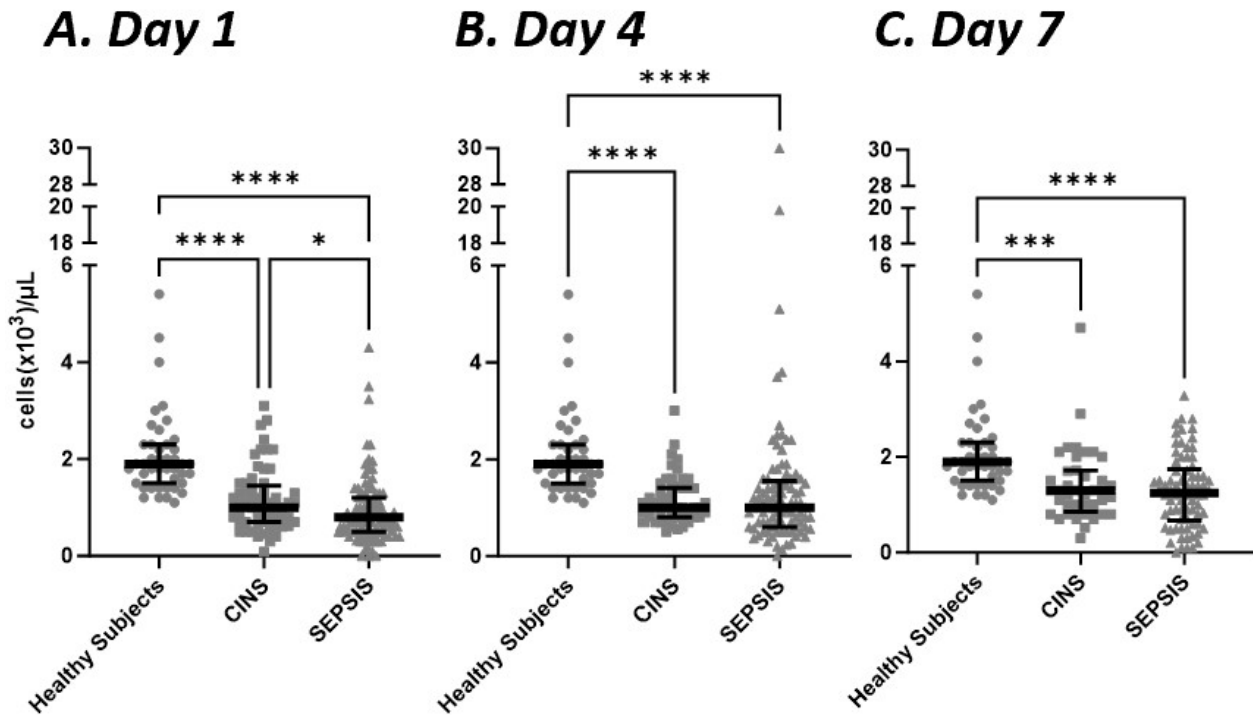
806 **Figure 5. Area under the Receiver Operator Curves (AUROC) for Physiologic (SOFA,**
807 **Charlson comorbidity scores) and Stimulated IFN γ ELISpot Responses in Differentiating**
808 **In-Hospital and 180-day Mortality.** Top Row: Panel A provides SOFA and Charlson
809 Comorbidity Index, and Panel B, selected ELISpot parameters discriminating 180 day
810 mortality. Lower Row: Same breakdowns as for the top row discriminating in-hospital
811 mortality. TE, IFN γ ELISpot total expression; SFU, IFN γ ELISpot spot forming units; SS
812 IFN γ ELISpot spot size



813

814

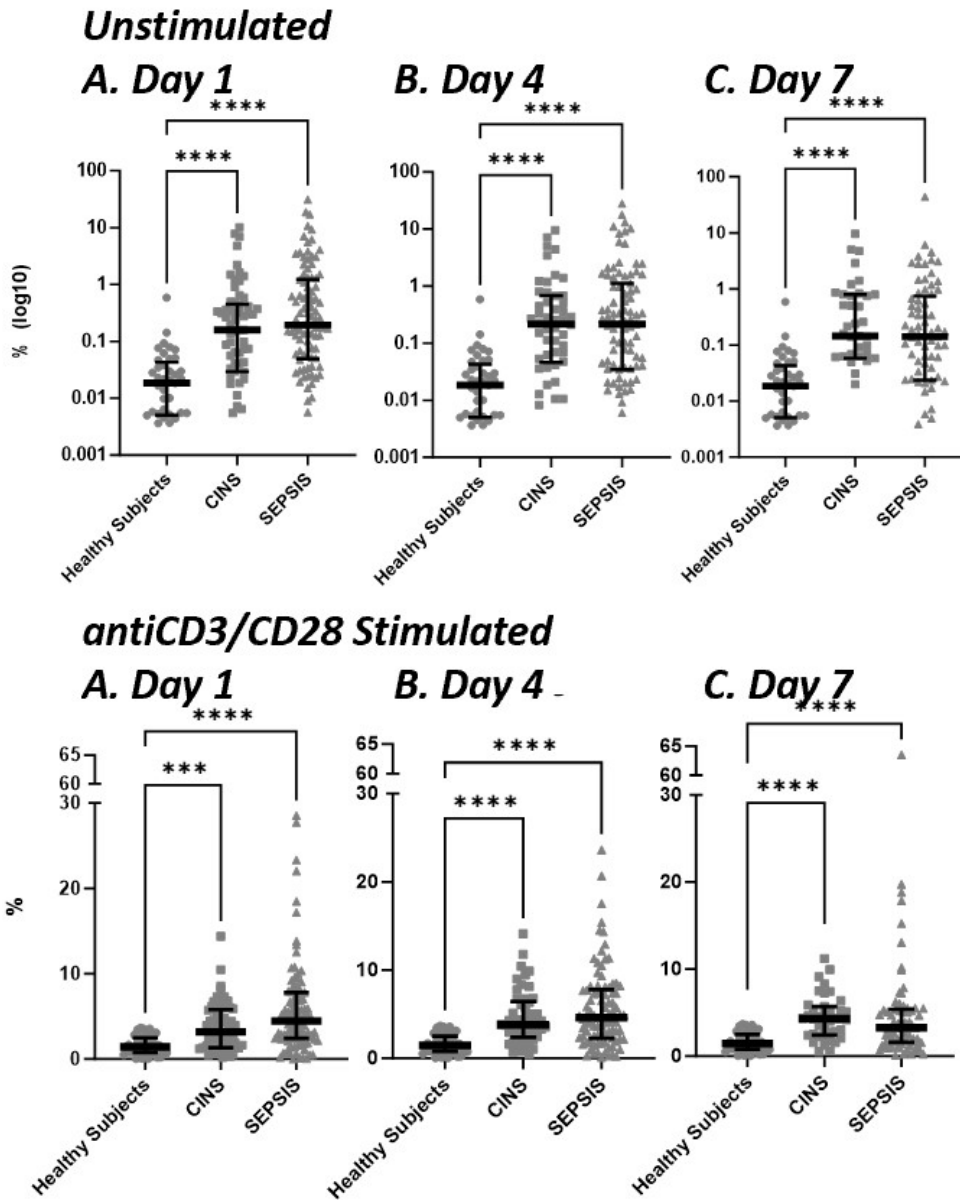
815 **Supplemental Figure 1. Absolute Lymphocyte Counts in SEPSIS and CINS Cohorts at**
816 **Different Time Intervals and Healthy Subjects.** Whole blood was collected at different time
817 points and total and absolute lymphocyte counts were determined. Both SEPSIS and CINS
818 resulted in a significant decline in total lymphocytes when compared to healthy subjects on
819 days 1, 4 and 7, while absolute lymphocyte counts were lower in SEPSIS than in CINS
820 patients on day 1. Healthy control subjects were sampled only once but values are presented
821 at each time point for comparison. * $p < 0.05$, *** $p < 0.001$, **** $p < 0.0001$ as determined by
822 Kruskal-Wallis ANOVA and post-hoc analyses using the Dunn test. Values are two sided
823 and represent raw p values.



824
825

826

827 **Supplemental Figure 2. Percentage of Lymphocytes Expressing IFN γ in Whole Blood**
828 **from SEPSIS and CINS cohorts, and Healthy Subjects.** The number of spot forming units
829 was compared to the absolute lymphocyte count and the percentage of lymphocytes producing
830 IFN γ was calculated. Regardless of time after enrollment, both SEPSIS and CINS markedly
831 increased the percentage of IFN γ -producing cells. * $p < 0.05$, *** $p < 0.001$, **** $p < 0.0001$, as
832 determined by Kruskal-Wallis ANOVA and post-hoc analyses using the Dunn test. Values
833 are two sided and represent raw p values. SFU, spot forming units. SS, spot size. TE, total
834 IFN γ expression.
835



Supplemental Methods

837
838
839 Detailed specific criteria for consenting and enrolling SEPSIS and CINS patients, and healthy
840 control subjects are described below, as is sampling and processing procedures. Actual IRB
841 documentation and the Consortium Laboratory Manual are readily available by simply
842 requesting them from our data and sample broker, the UF Clinical and Translational Research
843 Institute Biorepository ([https://www.ctsi.ufl.edu/research/laboratory-services/ctsi-biorepository-
844 2/scirc-specimens-archive/](https://www.ctsi.ufl.edu/research/laboratory-services/ctsi-biorepository-2/scirc-specimens-archive/)).

845 Recruitment methods

846 Screening for sepsis will be carried out using each hospital's own version of their sepsis alert
847 system, which quantifies derangements in vital signs, white blood cell count, and mental
848 status. After a putative diagnosis of sepsis, the patient is transferred to the ICU and sepsis
849 treatment bundles are initiated. If a patient is believed to have an infection and they are located
850 in, or transferred to the ICU, they are entered into each institution's sepsis management
851 protocol as standard of care which implements a variety of standard operating procedures
852 (SOPs) of clinical ICU care. After the patient enters the clinical management protocol, the
853 research coordinator is notified of a potential research subject. This coordinator will then
854 assess the following inclusion/exclusion criteria and consent the appropriate candidates.

855 All critically ill patients with or without sepsis will be managed via each institution's evidence-
856 based management protocols that emphasize early antibiotic administration, fluid resuscitation
857 and hemodynamic monitoring and support, consistent with current Surviving Sepsis Campaign
858 guidelines.

859 Consenting

860 Consent will be sought by clinical research staff, all of whom are familiar with institutional
861 logistics and infrastructure, sample acquisition and preparation, and are experienced in the
862 nuances of enrollment and informed consent for this challenging patient population. Many
863 critically ill patients in the ICUs may have altered mental status or pharmacologic sedation, but
864 would be regarded as prospective research subjects. We will seek an IRB-approved 96-hour
865 delayed consent for blood sample acquisition and completion of the /T1 visit per protocol
866 (within the first 72 hours). This includes: study criteria evaluation, sample collection and
867 transportation to clinical and research laboratories, collection of demographic information, and
868 collection of medical laboratory results to compliment research experiments. Additionally, we
869 will seek approval for telephone consent in the event that no LAR is physically present. For the
870 ICU patient population, many of whom are pharmacologically sedated and mechanically
871 ventilated, initial consent is commonly requested from LAR/next of kin. The setting for
872 conveying consent information to LAR/next of kin is often the ICU family waiting area or at
873 bedside. Consideration is given to the emotional status of the LAR/next of kin and ability to
874 understand the basic intent, methods, and voluntary nature of participation. If we need to call a
875 LAR, ideally we will email them a copy of the consent and review, record approval with a
876 witness on the line. If we can't email them, then we will review the entire consent over the
877 phone, record approval with a witness on the line.

878 The research staff will monitor the patient's progress and once they regain capacity, the patient
879 will be re-consented. If patient does not regain capacity to consent by discharge, he/she will be
880 consented at their next follow-up visit if capacity is regained.

881 For the healthy control subjects, we will send an email out to the Department of Surgery email
882 distribution list to all department staff for recruiting healthy control participants. When the
883 participant comes in for the blood draw we will review the consent and have them sign.

884 **Specific Inclusion/Exclusion Criteria**

885 **SEPSIS- Presumed Sepsis Patients**

886 Inclusion Criteria

887 A. Directly admitted ICU patients with sepsis (From ED or OR)
888 ICU patient developing sepsis during hospitalization.
889 Transferred to ICU from inpatient unit for development of sepsis.
890 Documentation in notes or diagnoses of "Sepsis", "Septic shock", "Severe Sepsis"

891 or

892 B. Suspicion of infectious cause of illness on admission
893 Documentation of suspected infection
894 Infectious testing performed (blood, urine, other cultures, viral or fungal testing)
895 Diagnostic testing: chest X-ray. CT scan of abdomen
896 Initiation of antimicrobial therapy (antibiotics, antivirals, antifungals)
897 Source control operation/procedure performed

898 and

899 Organ dysfunction as defined as an acute change in total SOFA score of 2 points
900 consequent to the infection.

901 The baseline SOFA score can be assumed to be zero in patients not known to have
902 preexisting organ dysfunction.

903

904 Exclusion Criteria

905 Patients deemed to be futile care or have advanced care directives or goals of care
906 limiting resuscitative efforts.

907 Severe traumatic brain injury (evidence of neurologic injury on CT scan and a GCS <8
908 after resuscitation).

909 Refractory shock (i.e., patients who are expected to die within 24hours).

910 Uncontrollable source of sepsis (e.g. irreversible disease state such as unresectable
911 dead bowel).

912 Outside facility transfer where suspected sepsis onset is >72 hours prior to ICU
913 admission.

914 Active chronic hepatitis or other chronic infectious diseases.

915 Known HIV infection with CD4 count <200 cells/mm³.

916 Organ transplant recipient on immunosuppressive agents.

917 Known pregnancy.

918 Prisoners.

919 Institutionalized patients.
920 Active cancer.
921 Any recent (past 6 months) chemotherapy or immunomodulatory therapies (including
922 biologics, monoclonal antibodies).
923 Patient having received steroids in past 4 weeks.
924

925 **CINS – Critically-ill non-sepsis patients**

926 Inclusion Criteria

927
928 A. Patients admitted to the SICU for non-infectious reasons
929 Trauma patients
930 Post-operative patients (not infectious source control procedures)
931 Inpatients transferred to the SICU for non-infectious reasons (e.g., bleeding, volume
932 overload, acute cardiac issue, ect.)
933

934 Exclusion criteria

935
936 Patients deemed to be futile care or have advanced care directives or goals of care
937 limiting resuscitative efforts.
938 Severe traumatic brain injury (evidence of neurologic injury on CT scan and a GCS <8 after
939 resuscitation).
940 Refractory shock (i.e., patients who are expected to die within 24hours).
941 Uncontrollable source of sepsis (e.g. irreversible disease state such as unresectable dead
942 bowel).
943 Outside facility transfer where suspected sepsis onset is >72 hours prior to ICU admission.
944 Active chronic Hepatitis or other chronic infectious diseases.
945 Known HIV infection with CD4 count <200 cells/mm³.
946 Organ transplant recipient on immunosuppressive agents.
947 Known pregnancy.
948 Prisoners.
949 Institutionalized patients.
950 Active cancer.
951 Any recent (past 6 months) chemotherapy or immunomodulatory therapies (including
952 biologics, monoclonal antibodies).
953 Patient having received steroids in past 4 weeks.
954

955 **Healthy Control Subjects**

956 Inclusion Criteria

957
958
959 All adults (age >=18)
960 Ability to obtain Informed Consent prior to blood collection.
961

962 Exclusion Criteria

- 963
- 964 Current, chronic steroid use
- 965 Pregnancy
- 966 Current or recent (within 7 days) use of antibiotics.
- 967

968 **Sample Collection**

969

970 **The overview of research sample collection for SPIES clinical study are presented in**

971 **the Sample Collection Chart:**

972

SPIES Sample Collection Chart						
	T1	T2	T3	T4	T5	T6
	Day 1	Day 4	Day 7	Day 14	Day 21	Day 28 or discharge
		(+/- 1)	(+/- 1)	(+/- 2)	(+/- 2)	(+/- 2)
Whole Blood ELISpot (1ml), HLA-DR (1ml), Cytokines (4-8ml) - 6-10ml heparin (green)	X	X	X	X	X	X
(Optional) CBC w/diff - 2ml EDTA (purple)	X	X	X	X	X	X
Gene Expression - 2.5ml PAXgene	X	X	X	X	X	X
Total blood (ml)	8.5 - 14.5	8.5 - 14.5	8.5 - 14.5	8.5 - 14.5	8.5 - 14.5	8.5 - 14.5

- 973
- 974

975 **PLASMA PROCESSING**

976 Administrative Note: All personnel involved in the procedures are to have completed the

977 University required Blood-Borne Pathogen training program, and provided suitable personal

978 protection equipment (PPE). These procedures are to be performed whenever possible in a

979 biocontainment hood (BSL1 or BSL2). All solid or liquid waste derived from the blood must be

980 disposed of appropriately in a biohazard container or inactivated using bleach or an acceptable

981 disinfectant. Venous or arterial whole blood is collected into the appropriate blood collection

982 tubes for each time point. The collection of blood should be obtained from an existing arterial

983 or venous line, or venipuncture should be performed by someone experienced in the

984 technique, and familiar with infectious precautions. The blood should be processed as soon as
985 possible, **but within 3 hours of the draw**. The blood should be **kept cold on ice** during the
986 period from the draw to the initiation of processing.

987 **CBC with Differential**

988 Each site must collect for and obtain a CBC with Differential at every patient sample time
989 point. These must be collected at the same time as the study blood draws or as close to it as
990 possible if done through the hospital's standard of care. This data must be entered into
991 REDCap.

992 **Plasma Collection**

993 1. Invert the green heparin blood tube gently to thoroughly mix the blood. Transfer one ml
994 of blood to a 15 ml conical (polyethylene or polystyrene) tube labeled HLA-DR. And transfer
995 500 ul of blood to a 1.5 ml microcentrifuge tube labeled ELISpot.

996

997 2. After removing the blood needed for the ELISpot and Smart Tube assays in Step 1,
998 centrifuge the remaining blood in the green top heparin blood collection tube at room
999 temperature (22°C) for 10 minutes at 1,800 x g, with the brake on low.

1000

1001 3. Once the tube has finished spinning, carefully transfer the plasma from the green top
1002 blood tube (take care not to disturb the cellular constituents) and aliquot 500 ul of plasma
1003 equally into 4-6 **green** capped plasma collection tubes. If there is any remaining plasma,
1004 collect and distribute evenly among all tubes.

1005

1006 4. Make sure the appropriate *Heparin Plasma* barcode labels are attached to the tubes
1007 and immediately store at -80°C.
1008