

1 **Improved NAAT assay for the diagnosis of onchocerciasis and its use for**
2 **detection of circulating cell free DNA**

3 Sasisekhar Bennuru¹, Frimpong Kodua^{1**}, Eric Dahlstrom², Thomas B Nutman¹

4

5 **Affiliations:**

6 ¹Laboratory of Parasitic Diseases, NIAID, NIH, Bethesda, MD USA

7 ²Genomics Unit, Research Technologies Branch, NIAID, NIH, Hamilton, USA.

8 ^{**}Howard University Hospital, Department of Internal Medicine, Washington DC, USA

9

10 **Abstract**

11 Mass drug administration (MDA) programs aimed at control and elimination of
12 onchocerciasis relies on annual or semi-annual distribution of Ivermectin (IVM) that
13 target the microfilarial (mf) stage of the parasite *Onchocerca volvulus*. The co-
14 endemicity of onchocerciasis with other filarial species often leads to interruptions in the
15 control programs. A much-needed tool for the elimination efforts are sensitive diagnostic
16 assays that can help differentiate from other co-endemic filarial infections or
17 xenomonitoring approaches. qPCR assays targeting highly repeated elements in the
18 genomes have allowed for increased sensitivity of detection that are pathogen-specific.
19 Utilizing NGS data, qPCR assays were designed to target 15 highly repeated targets
20 from *O. volvulus* and 11 from *O. ochengi*. The two most sensitive and specific repeats
21 Ov15R and Ov16R from *O. volvulus* and OoR1 and OoR5 from *O. ochengi*, were
22 selected for further testing.

23 The analytical sensitivity of both Ov15R and Ov16R were similar with limits of detection
24 (LOD) at 1 fg of *O. volvulus* genomic DNA (gDNA), and 100% specificity and ~32-fold
25 sensitive than O-150 qPCR. Similarly, OoR1 and OoR5 had LOD of 100 fg of *O.*
26 *ochengi* gDNA. Using DNA obtained previously from skin snips, Ov16R identified 17
27 additional samples as positive for infections when compared to O-150.
28 Further, to eliminate the need for time-dependent sample acquisition, we evaluated the
29 efficiency of plasma-derived circulating cell-free DNA (ccfDNA) to detect *O. volvulus*
30 infections and as a potential modality for testing cure of infection. Plasma-derived
31 ccfDNA failed to amplify Ov16R. In contrast using a small set of urine-derived ccfDNA
32 samples from Ov-infected individuals had varying levels of detectability as early as 12-
33 24 hours post-treatment. To enable processing of larger volumes of urine for better
34 sensitivity, a modified chitosan-based filter technique was developed as proof-of-
35 concept that efficiently captured gDNA from 1-15ml of urine.
36 Interestingly, Ov15R, Ov16R and O-150 map to the same contigs of *O. volvulus*
37 genome. This prompted the redesign of O-150 qPCR that resulted in O-150-New qPCR
38 assay that performs on par with Ov15R/Ov16R, thus offering more sensitive and
39 specific diagnosis of *O. volvulus* that can easily be configured to field-friendly formats
40 such as LAMP or RPA.

41

42 **Introduction**

43 *Onchocerca volvulus* is a filarial parasite that causes onchocerciasis or more often
44 known as 'river blindness' and is transmitted by the bites of *Simulium* blackfly species
45 primarily endemic to sub-Saharan Africa. Control efforts for elimination of the disease as

46 a major public health concern relies on the mass drug administration (MDA) programs
47 with annual or semi-annual distribution of Ivermectin (IVM). Only the microfilarial (mf)
48 stages of the parasite are effectively targeted using IVM that help to reduce disease
49 burden and block transmission to the blackfly vectors (*Simulium* sp). Based on the
50 microfilarial prevalence, endemic regions can be broadly categorized into hypoendemic
51 (<30-35%), mesoendemic (30-35% to 60%) and hyperendemic ($\geq 60\%$).

52 A much-needed tool for the elimination efforts is a specific and sensitive
53 diagnostic assay that can verify if the levels of transmission of the disease are low
54 enough to warrant the cessation of MDA or in regions of post-MDA surveillance for
55 monitoring resurgence of infection. The use-case scenario for the assay relies on the
56 assay(s) to have high sensitivity and specificity, to detect very low-levels of mf densities
57 while being able to discriminate between closely related co-endemic major filarial
58 parasites that infect humans such as *Loa loa*, *Wuchereria bancrofti*, *Mansonella*
59 *perstans* and the bovine filarial parasite *Onchocerca ochengi* that is also transmitted by
60 the same vector species. Another major concern is the presence of *Loa loa* microfilariae
61 in the skin-snips of infected individuals in co-endemic areas [1] that often lead to false
62 interpretations.

63 Historically, the identification of microfilariae in the skin snips by microscopy was
64 the 'gold standard' for diagnosis of infection. Though skin snip microscopy is 100%
65 specificity it is plagued with low sensitivity (estimated at 20%) esp. in areas with low mf
66 densities[2].

67 The guidelines from World Health organization (WHO) for stopping MDA and verifying
68 elimination of onchocerciasis as a major public health concern recommends serological

69 evaluation for Ov16 by ELISA or rapid diagnostic test (RDT) [3], where the seropositivity
70 to Ov16 in children younger than 10 years should be <0.1% and positivity of pool screen
71 PCR of at least 6000 black fly heads to be <0.05%, the diagnostic performance
72 thresholds of which depend on multiple factors [3, 4]. The Ov-16 antibody test
73 determines the presence of IgG4 antibodies to Ov-16 as a marker of exposure to the
74 parasite [5-8]. Entomological screening for the presence of infective L3 larvae in the
75 vector population relies on the PCR based amplification of O-150 repeat family region of
76 parasite DNA [9-11]. Though there is some conservation of the O-150 tandem repeats
77 sequences across the *Onchocerca* spp., the tandem repeats not only vary in the
78 number but also not always identical repeats. In addition to the detection of O-150,
79 assays based on real-time qPCR and loop mediated isothermal amplification (LAMP)
80 have been developed to detect *O. volvulus* DNA in the skin [12]. Skin snip evaluation
81 by PCR could be used to also differentiate active infection from exposure to the parasite
82 where the prevalence of Ov-16 seropositivity is > 0.1% [3]. However, skin snips being
83 more invasive in nature are becoming increasingly unpopular and often refused by
84 endemic communities [13]. Recent studies explored the detectability of circulating filarial
85 DNA for *B. malayi* [14], *L. loa* [15] or *Onchocerca* spp [16]. Though parasite-derived
86 miRNAs were detected in the plasma of *O. volvulus* infected individuals, their detection
87 as a biomarker has been challenging and were determined to be insufficient tools or as
88 biomarkers of treatment efficacy for *O. volvulus* [16, 17]. Detecting circulating cell-free
89 DNA in body fluids (serum/plasma or urine) provides a promising alternative where
90 sample collection is more convenient or less invasive.

91 In this study, we explored the utility of repeatexplorer pipeline that has previously
92 been shown to identify targets that are not only more sensitive in detecting infections
93 [15, 18-21] and specific, but also enable the monitoring of treatment efficacy [15].

94

95

96 **Methods**

97 *Samples*

98 All archived serum/plasma or urine samples were obtained as part of National Institute
99 of Allergy and Infectious Diseases' Institutional Review Board-approved protocols for
100 filaria-infected patients (NCT00001230) and healthy donors (NCT00090662), that were
101 from previous studies [22, 23] and stored at -80C. As part of routine clinical care,
102 informed written consent was obtained from all subjects. Archived DNA samples from
103 skin snips were from previous studies [1], that received ethical clearance from the
104 Cameroon National Ethics Committee for Research in Human Health (No.
105 2013/11/370/L/CNERSH/SP), and an administrative authorization was granted by the
106 Ministry of Public Health (D30- 571/L/MINSANTE/SG/DROS/CRSPE/BBM). All eligible
107 volunteers signed an informed consent form for their participation in the study, including
108 for the further use of their samples.

109

110 *Target identification and Assay Design*

111 Sequence read archives (SRA) from BioProjects PRJEB513, PRJEB17785 and
112 PRJNA289926 for *O. volvulus* and BioProject PRJEB23566 for *O. ochengi* were
113 processed to trim, clean and obtain paired reads. The RepeatExplorer [24, 25] pipeline

114 was used to analyze the paired reads and generate highly repeated contigs (numbered
115 with a prefix of “Ov” and suffix “R”). The most promising contigs for *O. volvulus* (n=15)
116 and *O. ochengi* (n=11) with >1000x coverage, minimal length of 100 base pairs and
117 minimal homology with other helminths and human were selected (**Table S1**). O-150
118 qPCR was also redesigned to improve the assay. PCR assays were designed for these
119 selected sequences using the PrimerQuest Tool (Integrated DNA Technologies, IDT),
120 and custom oligos synthesized for screening with real-time qPCR assays.

121

122 *ccfDNA extraction and real-time PCR*

123 Circulating cell-free DNA was extracted from 100, 250, 500 or 1000 µl of plasma using
124 the MinElute ccfDNA kit or its automated version Viral/Pathogen DSP kit for
125 Qiasymphony. The samples were eluted in a final volume of 20 µl for MinElute and 60 µl
126 on the Qiasymphony.

127 DNA extractions from 1 ml of urine were as mentioned above, while larger
128 volumes were performed using a chitosan-modified filter paper technique [26, 27] with
129 slight modifications. Briefly, Fusion 5 filter paper (Whatman) were washed in 30 ml 0.2
130 M NaOH for 5 minutes, washed with 50 ml deionized water (3x) and dried under
131 vacuum at 45°C. The filters were soaked in chitosan (0.25%) dissolved in 0.1 M acetic
132 acid for 16 hours at room temperature on a rotary shaker. The membranes were
133 washed (3x) in deionized water and dried under vacuum at 45°C. 4-mm diameter discs
134 of chitosan-functionalized membranes and Whatman GB003 cellulose paper were made
135 using biopsy punch. A 2 mm-diameter opening was made in a female Luer cap (Cole
136 Parmer, Vernon Hills, IL) using a biopsy punch. The 4-mm GB003 cellulose membrane

137 disc (as backing support membrane) followed by the chitosan-functionalized disc were
138 positioned in the luer cap. Urine samples mixed 1:1 with 50 mM MES (pH 5.0) were
139 passed through the luer caps using 20 ml syringes at a flow rate of 0.5 ml per minute
140 using the PHD ULTRA (Harvard Apparatus). The DNA trapped on the chitosan-
141 functionalized membrane was retrieved by boiling the disc in 50 µl of deionized water.

142 qPCR was performed in quadruplicates using an ABI 7900 sequence detection
143 system using Taqman fast chemistry reagents (Applied Biosystems, Carlsbad, CA, USA)
144 and primer/probe sets described in [Table 1](#). Amplification conditions were 20 seconds
145 at 95°C followed by 40 cycles of 1 second at 95°C and 20 seconds at 60°C. An internal
146 plasmid control [28] was spiked into all samples prior to ccfDNA extraction to exclude
147 false negatives due to qPCR inhibition. For a sample to be considered as positive at
148 least three of the 4 replicates needed to positive. An internal plasmid control [28] was
149 spiked into all samples prior to ccfDNA extraction to exclude false negatives due to
150 qPCR inhibition.

151

152 *Statistical analyses*

153 All statistical analyses were performed using GraphPad Prism v8. Unpaired samples
154 were compared using Mann-Whitney test and paired analyses were performed with
155 Wilcoxon matched-pairs signed rank test.

156

157 **Results**

158 *O. volvulus* and *O. ochengi* target identification

159 The repeatexplorer pipeline [24, 25] resulted in the identification of several highly
160 repetitive contigs in the genomes of *O. volvulus* and *O. ochengi* of which, thirteen of the
161 most highly represented ones for *O. volvulus* and eleven of the *O. ochengi* contigs were
162 selected to be screened by qPCR (**Figure 1**). Preliminary screening with 10-fold
163 dilutions of 1ng/ul of *O. volvulus* genomic DNA (Ov gDNA) indicated that Ov15R,
164 Ov16R, Ov21R, Ov31R, Ov36R and Ov54R had better sensitivity than the other repeat
165 contigs (**Figure 1A**). Moreover, these six assays had better sensitivity (lower Ct values)
166 compared to the current gold standard O-150 qPCR (**Figure 1B**), of which Ov15R and
167 Ov16R were chosen for being the most sensitive assays. Ov15R and Ov16R assays
168 were similar in their limits of detection (1fg of gDNA) while maintaining specificity with
169 gDNA of *B. malayi*, *L. loa*, *W. bancrofti*, *M. perstans* and *O. ochengi* (**Figure 1C**).

170 The eleven *O. ochengi* repeat contigs were screened with 2 assays designed for
171 each contig (R1-R22), of which R1 and R5 (henceforth referred to as OoR1 and OoR5)
172 were the most sensitive (lowest Ct value) when screened with 10 pg of *O. ochengi*
173 gDNA (**Figure 1D**). Screening of OoR1 and OoR5 with gDNA standards indicated the
174 LOD of 100 fg with *O. ochengi* gDNA while maintaining specificity with *O. volvulus*
175 gDNA (**Figure 1E**).

176

177 *Relationship between O-150 and Ov15R/Ov16R*

178 Because Ov15R and Ov16R had better sensitivity (lower Ct values) compared to O-150
179 qPCR assay (**Figure 2A**), combinations of Ov15R and/or Ov16R were tested with O-
180 150 but did not yield any enhancements in the limits of detection. Sequence analyses
181 suggested that the selected *O. volvulus* contigs might be related somehow to O-150 in

182 that they all mapped to one end of OVOC_OO_000013, OVOC_OO_00548 or
183 OVOC_OM1b of the *O. volvulus* genome. This prompted a re-designing of the O-150
184 assay, where all the new assays (O-150 N1-N5) performed much better than the
185 original O-150 assay and comparable to Ov15R/Ov16R (**Figure 2B**). The O-150 N1
186 (henceforth called O-150New) was used for all further comparative analyses when
187 needed. It is not clear as to what drives this new assay to be more sensitive but
188 compared to the original oligos, the major observable change was the number of
189 locations that O-150New reverse could bind in the O-150 repeat region (Acc. No.
190 J04659.1) (**Figure S1**). Since Ov15R and Ov16R were essentially similar, all further
191 analyses were done with Ov16R.

192

193 *Efficiency of Ov16R with skin snip samples*

194 The efficacy of Ov16R was evaluated with archived DNA extracted from skin snip
195 samples from two previous studies: 1) individuals with nodding syndrome that were
196 previously screened with O-150 qPCR and 2) from individuals living in an area co-
197 endemic for loiasis. As shown in **Figure 3A**, of the 95 samples with nodding syndrome,
198 42 (44%) were positive by O-150. Ov16R with slightly better (lower) Ct values (**Figure**
199 **3B**) was able to pick up 17 additional samples as positive for a total of 59 (62%)
200 positives (**Figure 1C**). Likewise, DNA extracted from skin snip samples from an area
201 co-endemic for loiasis with microfilariae in the skin snips that were previously diagnosed
202 for the vast majority as microfilariae of *Loa loa* and not *Onchocerca volvulus*, were
203 tested with Ov16R. As shown in **Figure 3D**, despite a modest gain in Ct values
204 compared to O-150, there were no additional positives that were detectable with

205 Ov16R. As expected, the O150 results correlated similarly with O-150-New and Ov16R
206 Ct values, with O-150-New performing similarly to Ov16R in comparison to the O-150
207 (Figure 3E-G).

208

209 *Plasma circulating cell-free DNA (ccfDNA)*

210 To evaluate the efficacy of detecting Ov16R or O-150-New in ccfDNA derived from
211 plasma of infected individuals, pooled plasma of infected individuals or pooled plasma
212 of health blood bank individuals spiked with 100 pg of gDNA were used to extract
213 ccfDNA. The ccfDNA extraction was carried out using plasma volumes of 100 µl, 250 µl,
214 500 µl and 1000 µl, using the MinElute ccfDNA kit (Qiagen) with elution volumes of 20
215 µl for all samples. As shown in Figure 4A, ccfDNA derived from any of the pooled
216 samples (and volumes) from Ecuador or Guatemala failed to amplify Ov16R. As
217 expected, the ccfDNA from pooled blood bank individuals were negative but the spiked
218 samples were highly positive for Ov16R, suggesting that the lack of detectability is likely
219 due to the absence of detectable levels of parasite-derived DNA in circulation.

220

221 *Urine circulating cell-free DNA (ccfDNA)*

222 Urine as a source of detecting the presence of ccfDNA was tested using archived
223 samples from previous studies (ref), that was aimed at understanding the immunological
224 sequelae during Mazzotti reactions post treatment with ivermectin and followed up
225 every 3-12 hours. ccfDNA was extracted from 1 ml of urine from 22 samples pre-
226 treatment (18-infected and 4-controls). As shown in Figure 4B, 8/18 (44%) samples
227 were positive for Ov16R at time 0. Since ivermectin targets only the microfilarial stages,

228 and the death of microfilariae would result in parasite-derived DNA in circulation, we
229 screened the time-course samples for 4 individuals that were still available (2 each for
230 samples that were negative or positive at time 0). As expected, in the two samples that
231 were negative pre-treatment, Ov16R could be detected as early as 12-24 hours post-
232 treatment (**Figure 4C**), that eventually clears away around 3-4 days post-treatment. In
233 contrast, the two samples that were positive for Ov16R pre-treatment had varying levels
234 of detectability all through the time-course (**Figure 4D**).

235 To evaluate if there would be any difference in the sensitivity of ccfDNA in urine
236 that has been frozen away for two decades compared to fresh urine, we obtained more
237 recent/fresh urine samples from 5 individuals from Cameroon. Surprisingly, ccfDNA
238 extracted from 1 ml of all five urine samples were positive for Ov16R (**Figure 4E**).

239

240 *Chitosan filter-based capture of ccfDNA*

241 Though urine is not exactly a limiting factor in terms of sample volume, the
242 processing of larger volumes with existing kits/reagents render it highly unusable.
243 Hence to evaluate the feasibility of capturing/trapping the ccfDNA, we adapted the
244 chitosan-modified filter paper technique (ref). Because of the non-availability of patient
245 derived urine samples in higher volumes, pooled normal urine (1 or 15 ml) was spiked
246 with various concentrations of *O. volvulus* gDNA and an internal control (IAC) and
247 ccfDNA extracted onto chitosan filters (see methods). In parallel, 1 ml of urine samples
248 with the spiked gDNA was also extracted on QiaSymphony. The filters were boiled in 30
249 ul of TE buffer (pH 8.0) to elute the DNA for qPCR detection. As shown in **Figure 5**, the
250 efficiency of gDNA captured from 1 ml or 15 ml of urine and subsequent detectability of

251 Ov16R were identical, indicating that it is possible to filter out larger volumes of urine,
252 while capturing DNA.

253

254 **Discussion**

255

256 This study reports the identification of genomic repeats enriched in the genomes of *O.*
257 *volvulus* and *O. ochengi*. Among those identified for *O. volvulus*, Ov16R was more
258 sensitive than O-150 by qPCR. Based on informatic analyses, O-150 and Ov16R are
259 related by way of their genomic location as they both map to one end of
260 OVOC_OO_000013, OVOC_OO_00548 or OVOC_OM1b of the *O. volvulus* genome.

261 The superiority of Ov16R to O-150 qPCR in terms of sensitivity was probably overcome
262 using RepeatExplorer pipeline that utilizes NGS data to directly infer repeated elements
263 that have been successfully utilized for developing highly sensitive diagnostic assays
264 [18-20], instead of assembled contigs of the genome, where highly repetitive sequences
265 in genome assemblies are often omitted as orphan DNA during the assembly process.

266 Diagnostic testing for onchocerciasis in regions co-endemic for *Loa* or
267 *Mansonella* spp can be challenging as mf of *M. streptocerca* typically migrate through
268 the skin [29], whereas mf from *M. perstans* and *L. loa* circulate in the vasculature [30].
269 Nevertheless, microscopy analyses of *L. loa* can be misdiagnosed as mf of onchocerca
270 in nature especially in cases where the burden is high [1]. With the availability of better
271 repeat targets for detecting *L. loa* [15], *M. perstans* [21], the combination of Ov16R or
272 O150New would be a great tool to not only help in more accurate diagnosis but to also
273 advance the global efforts for mapping and elimination of neglected tropical diseases in

274 areas co-endemic for filarial infections. Another bottleneck in the molecular
275 xenodiagnoses or xenomonitoring is the presence of other onchocerca species (*O.*
276 *ochengi*, *O. guttarosa* etc) in the vectors. The use of OoR1 or OoR5 along with Ov16R
277 or O150New would help differentiate *O. ochengi* from *O. volvulus*). Alternatively, the use
278 of OvND5 (GenBank: AY462885.1 and FM206483.1) [31] that is slightly less sensitive
279 but highly specific for *O. volvulus* or *O. ochengi* could be implemented as a second or
280 confirmatory test to rule of *O. volvulus*.

281 Circulating cell-free DNA (ccfDNA) are residual fragments of DNA present in the
282 peripheral circulation and have been used as good biomarkers in pregnancy, diabetes,
283 cancer and solid-organ transplantation (reviewed in [32-34]). Since the circulating cell-
284 free DNA in the body fluids (plasma and/or urine) are short-lived and likely to be
285 excreted in urine, we evaluated the ability to detect Ov16R in plasma- and urine-derived
286 ccfDNA of infected individuals to reflect the presence of active infection as the parasites
287 release DNA (homeostatic and upon injury/death after treatment). However, we were
288 unable to detect Ov16R reliably in ccfDNA derived from 250 ul of plasma. Increasing the
289 initial of plasma to 2 ml did not alter the outcome significantly, suggesting that the
290 inability to detect Ov16R in plasma-derived ccfDNA may partly be due to the niche of *O.*
291 *volvulus* (skin-dwelling) in contrast to the blood vasculature dwelling filarial parasites
292 (*W. bancrofti*, *B. malayi* and *L. loa*). It is interesting that the novel repeat regions that
293 were identified earlier were also located in contigs that shared the O-150 repeat [16],
294 but were no better at detecting circulating parasite-derived DNA.

295

296 The kinetics of detecting Ov16R in urine after treatment with DEC and their
297 disappearance after 72 hours correlates well with the rapid death of the microfilariae
298 and subsequent clearance from circulation with the immunohistological and
299 microscopical observations that the mf disappear within 3-days of microfilaricidal
300 treatment [35, 36].

301
302 Nevertheless, in contrast to *L. loa* infections [15], urine proved to be a better
303 source for parasite-derived ccfDNA. While the lack of parasite derived ccfDNA in
304 plasma could be attributed to the niche of *O. volvulus* (in contrast to vascular dwelling
305 filaria such as *W. bancrofti* or *L. loa*), it is not clear as to why Ov16R was more readily
306 detectable in the limited number of more recent/fresh urine samples compared to
307 archived frozen urine samples. Previous studies demonstrated that the ccfDNA is
308 comprised of highly fragmented double stranded DNA around 150bp in length, that
309 relates to about 9,000-17,000 genome equivalents of human diploid genome in 1 ml of
310 blood [37, 38]. Though there is no established method of characterizing the nature of
311 parasite-derived ccfDNA in circulation, they are comparatively less abundant when
312 compared to the host-derived ccfDNA. The rapid turnover and estimated renal
313 clearance of ~30 minutes is an important feature of ccfDNA that can be exploited for
314 active cases of infection. The ccfDNA content is also known to vary as a function of
315 collection time, duration interval and storage conditions [39]. Prospectively, analyzing
316 larger volumes of urine samples using the chitosan filter-based method needs to be
317 evaluated for the efficiency of DNA capture. Moreover, once optimized, this would also
318 facilitate easy storage of the filters compared to storing larger volumes in freezers.

319

320 **Acknowledgements**

321 This work was supported in part by the Division of Intramural Research (DIR) of the
322 National Institute of Allergy and Infectious Diseases, NIH.

323 We thank Dr. Sara Lustigman from New York Blood Center for fresh urine samples from
324 Cameroon.

325

326 All data produced in the present work are contained in the manuscript

327 REFERENCES

- 328 1. Nana-Djeunga HC, Fossuo-Thotchum F, Pion SD, Chesnais CB, Kubofcik J, Mackenzie CD,
329 et al. Loa loa Microfilariae in Skin Snips: Consequences for Onchocerciasis Monitoring and
330 Evaluation in L. loa-Endemic Areas. *Clin Infect Dis*. 2019;69(9):1628-30. doi: 10.1093/cid/ciz172.
331 PubMed PMID: 30861060; PubMed Central PMCID: PMC6792118.
- 332 2. Taylor HR, Munoz B, Keyvan-Larijani E, Greene BM. Reliability of detection of
333 microfilariae in skin snips in the diagnosis of onchocerciasis. *Am J Trop Med Hyg*.
334 1989;41(4):467-71. doi: 10.4269/ajtmh.1989.41.467. PubMed PMID: 2802024.
- 335 3. Guidelines for stopping mass drug administration and verifying elimination of human
336 onchocerciasis - Criteria and procedures, (1 January 2016, 2016).
- 337 4. Group NTDMCO. The World Health Organization 2030 goals for onchocerciasis: Insights
338 and perspectives from mathematical modelling: NTD Modelling Consortium Onchocerciasis
339 Group. *Gates Open Res*. 2019;3:1545. Epub 20190926. doi: 10.12688/gatesopenres.13067.1.
340 PubMed PMID: 31723729; PubMed Central PMCID: PMC6820451.
- 341 5. Lobos E, Weiss N, Karam M, Taylor HR, Ottesen EA, Nutman TB. An immunogenic
342 *Onchocerca volvulus* antigen: a specific and early marker of infection. *Science*.
343 1991;251(5001):1603-5. doi: 10.1126/science.2011741. PubMed PMID: 2011741.
- 344 6. Gbakima AA, Nutman TB, Bradley JE, McReynolds LA, Winget MD, Hong Y, et al.
345 Immunoglobulin G subclass responses of children during infection with *Onchocerca volvulus*.
346 *Clin Diagn Lab Immunol*. 1996;3(1):98-104. doi: 10.1128/cdli.3.1.98-104.1996. PubMed PMID:
347 8770512; PubMed Central PMCID: PMC6792118.
- 348 7. Weil GJ, Steel C, Liftis F, Li BW, Mearns G, Lobos E, et al. A rapid-format antibody card
349 test for diagnosis of onchocerciasis. *J Infect Dis*. 2000;182(6):1796-9. Epub 20001026. doi:
350 10.1086/317629. PubMed PMID: 11069258.
- 351 8. Golden A, Steel C, Yokobe L, Jackson E, Barney R, Kubofcik J, et al. Extended result
352 reading window in lateral flow tests detecting exposure to *Onchocerca volvulus*: a new
353 technology to improve epidemiological surveillance tools. *PLoS One*. 2013;8(7):e69231. Epub
354 20130723. doi: 10.1371/journal.pone.0069231. PubMed PMID: 23935960; PubMed Central
355 PMCID: PMC3720650.
- 356 9. Katholi CR, Toe L, Merriweather A, Unnasch TR. Determining the prevalence of
357 *Onchocerca volvulus* infection in vector populations by polymerase chain reaction screening of
358 pools of black flies. *J Infect Dis*. 1995;172(5):1414-7. doi: 10.1093/infdis/172.5.1414. PubMed
359 PMID: 7594692.
- 360 10. Unnasch TR, Meredith SE. The use of degenerate primers in conjunction with strain and
361 species oligonucleotides to classify *Onchocerca volvulus*. *Methods Mol Biol*. 1996;50:293-303.
362 doi: 10.1385/0-89603-323-6:293. PubMed PMID: 8751366.
- 363 11. Zimmerman PA, Guderian RH, Aruajo E, Elson L, Phadke P, Kubofcik J, et al. Polymerase
364 chain reaction-based diagnosis of *Onchocerca volvulus* infection: improved detection of
365 patients with onchocerciasis. *J Infect Dis*. 1994;169(3):686-9. doi: 10.1093/infdis/169.3.686.
366 PubMed PMID: 8158053.
- 367 12. Alhassan A, Makepeace BL, LaCourse EJ, Osei-Atweneboana MY, Carlow CK. A simple
368 isothermal DNA amplification method to screen black flies for *Onchocerca volvulus* infection.

- 369 PLoS One. 2014;9(10):e108927. Epub 20141009. doi: 10.1371/journal.pone.0108927. PubMed
370 PMID: 25299656; PubMed Central PMCID: PMC4191976.
- 371 13. Wilson NO, Badara Ly A, Cama VA, Cantey PT, Cohn D, Diawara L, et al. Evaluation of
372 Lymphatic Filariasis and Onchocerciasis in Three Senegalese Districts Treated for Onchocerciasis
373 with Ivermectin. PLoS Negl Trop Dis. 2016;10(12):e0005198. Epub 20161207. doi:
374 10.1371/journal.pntd.0005198. PubMed PMID: 27926918; PubMed Central PMCID:
375 PMC5142766.
- 376 14. Khowawisetsut L, Sarasombath PT, Thammapalo S, Loymek S, Korbarsa T, Nochote H, et
377 al. Therapeutic trial of doxycyclin plus ivermectin for the treatment of *Brugia malayi* naturally
378 infected cats. Vet Parasitol. 2017;245:42-7. Epub 20170818. doi: 10.1016/j.vetpar.2017.08.009.
379 PubMed PMID: 28969836.
- 380 15. Bennuru S, Kodua F, Drame PM, Dahlstrom E, Nutman TB. A novel, bioinformatically
381 informed highly sensitive NAAT assay for the diagnosis of loiasis and its use for detection of
382 circulating cell free DNA. J Infect Dis. 2023. Epub 20230527. doi: 10.1093/infdis/jiad186.
383 PubMed PMID: 37243712.
- 384 16. Macfarlane CL, Quek S, Pionnier N, Turner JD, Wanji S, Wagstaff SC, et al. The
385 insufficiency of circulating miRNA and DNA as diagnostic tools or as biomarkers of treatment
386 efficacy for *Onchocerca volvulus*. Sci Rep. 2020;10(1):6672. Epub 20200421. doi:
387 10.1038/s41598-020-63249-4. PubMed PMID: 32317658; PubMed Central PMCID:
388 PMC7174290.
- 389 17. Tritten L, Burkman E, Moorhead A, Satti M, Geary J, Mackenzie C, et al. Detection of
390 circulating parasite-derived microRNAs in filarial infections. PLoS Negl Trop Dis.
391 2014;8(7):e2971. Epub 20140717. doi: 10.1371/journal.pntd.0002971. PubMed PMID:
392 25033073; PubMed Central PMCID: PMC4102413.
- 393 18. O'Connell EM, Harrison S, Dahlstrom E, Nash T, Nutman TB. A Novel, Highly Sensitive
394 Quantitative Polymerase Chain Reaction Assay for the Diagnosis of Subarachnoid and
395 Ventricular Neurocysticercosis and for Assessing Responses to Treatment. Clin Infect Dis.
396 2020;70(9):1875-81. doi: 10.1093/cid/ciz541. PubMed PMID: 31232448; PubMed Central
397 PMCID: PMC7156770.
- 398 19. Pilotte N, Maasch J, Easton AV, Dahlstrom E, Nutman TB, Williams SA. Targeting a highly
399 repeated germline DNA sequence for improved real-time PCR-based detection of *Ascaris*
400 infection in human stool. PLoS Negl Trop Dis. 2019;13(7):e0007593. Epub 20190722. doi:
401 10.1371/journal.pntd.0007593. PubMed PMID: 31329586; PubMed Central PMCID:
402 PMC6675119.
- 403 20. Sears WJ, Qvarnstrom Y, Dahlstrom E, Snook K, Kaluna L, Balaz V, et al. AcanR3990
404 qPCR: A Novel, Highly Sensitive, Bioinformatically-Informed Assay to Detect *Angiostrongylus*
405 *cantonensis* Infections. Clin Infect Dis. 2021;73(7):e1594-e600. doi: 10.1093/cid/ciaa1791.
406 PubMed PMID: 33252651; PubMed Central PMCID: PMC8492198.
- 407 21. Pilotte N, Thomas T, Zulch MF, Sirois AR, Minetti C, Reimer LJ, et al. Targeting a highly
408 repetitive genomic sequence for sensitive and specific molecular detection of the filarial
409 parasite *Mansonella perstans* from human blood and mosquitoes. PLoS Negl Trop Dis.
410 2022;16(12):e0010615. Epub 20221229. doi: 10.1371/journal.pntd.0010615. PubMed PMID:
411 36580452; PubMed Central PMCID: PMC9833530.

- 412 22. Steel C, Lujan-Trangay A, Gonzalez-Peralta C, Zea-Flores G, Nutman TB. Immunologic
413 responses to repeated ivermectin treatment in patients with onchocerciasis. *J Infect Dis.*
414 1991;164(3):581-7. doi: 10.1093/infdis/164.3.581. PubMed PMID: 1822959.
- 415 23. Francis H, Awadzi K, Ottesen EA. The Mazzotti reaction following treatment of
416 onchocerciasis with diethylcarbamazine: clinical severity as a function of infection intensity. *Am*
417 *J Trop Med Hyg.* 1985;34(3):529-36. doi: 10.4269/ajtmh.1985.34.529. PubMed PMID: 4003668.
- 418 24. Novak P, Neumann P, Pech J, Steinhaisl J, Macas J. RepeatExplorer: a Galaxy-based web
419 server for genome-wide characterization of eukaryotic repetitive elements from next-
420 generation sequence reads. *Bioinformatics.* 2013;29(6):792-3. Epub 20130201. doi:
421 10.1093/bioinformatics/btt054. PubMed PMID: 23376349.
- 422 25. Novak P, Neumann P, Macas J. Graph-based clustering and characterization of repetitive
423 sequences in next-generation sequencing data. *BMC Bioinformatics.* 2010;11:378. Epub
424 20100715. doi: 10.1186/1471-2105-11-378. PubMed PMID: 20633259; PubMed Central PMCID:
425 PMCPMC2912890.
- 426 26. Gan W, Gu Y, Han J, Li CX, Sun J, Liu P. Chitosan-Modified Filter Paper for Nucleic Acid
427 Extraction and "in Situ PCR" on a Thermoplastic Microchip. *Anal Chem.* 2017;89(6):3568-75.
428 Epub 20170308. doi: 10.1021/acs.analchem.6b04882. PubMed PMID: 28230980.
- 429 27. Rosenbohm JM, Robson JM, Singh R, Lee R, Zhang JY, Klapperich CM, et al. Rapid
430 electrostatic DNA enrichment for sensitive detection of *Trichomonas vaginalis* in clinical urinary
431 samples. *Anal Methods.* 2020;12(8):1085-93. Epub 20200205. doi: 10.1039/c9ay02478f.
432 PubMed PMID: 35154421; PubMed Central PMCID: PMCPMC8837197.
- 433 28. Deer DM, Lampel KA, Gonzalez-Escalona N. A versatile internal control for use as DNA in
434 real-time PCR and as RNA in real-time reverse transcription PCR assays. *Lett Appl Microbiol.*
435 2010;50(4):366-72. Epub 20100122. doi: 10.1111/j.1472-765X.2010.02804.x. PubMed PMID:
436 20149084.
- 437 29. Fischer P, Buttner DW, Bamuhiiga J, Williams SA. Detection of the filarial parasite
438 *Mansonella streptocerca* in skin biopsies by a nested polymerase chain reaction-based assay.
439 *Am J Trop Med Hyg.* 1998;58(6):816-20. doi: 10.4269/ajtmh.1998.58.816. PubMed PMID:
440 9660471.
- 441 30. Zoure HGM, Wanji S, Noma M, Amazigo UV, Diggle PJ, Tekle AH, et al. The Geographic
442 Distribution of *Loa loa* in Africa: Results of Large-Scale Implementation of the Rapid Assessment
443 Procedure for Loiasis (RAPLOA). *Plos Neglect Trop D.* 2011;5(6). doi: ARTN e1210
444 10.1371/journal.pntd.0001210. PubMed PMID: WOS:000292139600045.
- 445 31. Hendy A, Kruger A, Pfarr K, De Witte J, Kibweja A, Mwingira U, et al. The blackfly vectors
446 and transmission of *Onchocerca volvulus* in Mahenge, south eastern Tanzania. *Acta Trop.*
447 2018;181:50-9. Epub 20180202. doi: 10.1016/j.actatropica.2018.01.009. PubMed PMID:
448 29410302.
- 449 32. Arko-Boham B, Aryee NA, Blay RM, Owusu EDA, Tagoe EA, Doris Shackie ES, et al.
450 Circulating cell-free DNA integrity as a diagnostic and prognostic marker for breast and prostate
451 cancers. *Cancer Genet.* 2019;235-236:65-71. Epub 20190423. doi:
452 10.1016/j.cancergen.2019.04.062. PubMed PMID: 31105051.
- 453 33. Edwards RL, Menteeer J, Lestz RM, Baxter-Lowe LA. Cell-free DNA as a solid-organ
454 transplant biomarker: technologies and approaches. *Biomark Med.* 2022;16(5):401-15. Epub
455 20220223. doi: 10.2217/bmm-2021-0968. PubMed PMID: 35195028.

- 456 34. Padilla-Martinez F, Wojciechowska G, Szczerbinski L, Kretowski A. Circulating Nucleic
457 Acid-Based Biomarkers of Type 2 Diabetes. *Int J Mol Sci.* 2021;23(1). Epub 20211228. doi:
458 10.3390/ijms23010295. PubMed PMID: 35008723; PubMed Central PMCID: PMC8745431.
- 459 35. Buttner G, Zea-Flores G, Poltera AA, Buttner DW. Fine structure of microfilariae in the
460 skin of onchocerciasis patients after exposure to amocarzine. *Trop Med Parasitol.*
461 1991;42(3):314-8. PubMed PMID: 1801159.
- 462 36. Darge K, Lucius R, Monson MH, Behrendsen J, Buttner DW. Immunohistological and
463 electron microscopic studies of microfilariae in skin and lymph nodes from onchocerciasis
464 patients after ivermectin treatment. *Trop Med Parasitol.* 1991;42(4):361-7. PubMed PMID:
465 1796234.
- 466 37. Volik S, Alcaide M, Morin RD, Collins C. Cell-free DNA (cfDNA): Clinical Significance and
467 Utility in Cancer Shaped By Emerging Technologies. *Mol Cancer Res.* 2016;14(10):898-908. Epub
468 20160715. doi: 10.1158/1541-7786.MCR-16-0044. PubMed PMID: 27422709.
- 469 38. Azad AA, Volik SV, Wyatt AW, Haegert A, Le Bihan S, Bell RH, et al. Androgen Receptor
470 Gene Aberrations in Circulating Cell-Free DNA: Biomarkers of Therapeutic Resistance in
471 Castration-Resistant Prostate Cancer. *Clin Cancer Res.* 2015;21(10):2315-24. Epub 20150223.
472 doi: 10.1158/1078-0432.CCR-14-2666. PubMed PMID: 25712683.
- 473 39. Augustus E, Van Casteren K, Sorber L, van Dam P, Roeyen G, Peeters M, et al. The art of
474 obtaining a high yield of cell-free DNA from urine. *PLoS One.* 2020;15(4):e0231058. Epub
475 20200406. doi: 10.1371/journal.pone.0231058. PubMed PMID: 32251424; PubMed Central
476 PMCID: PMC7135229.

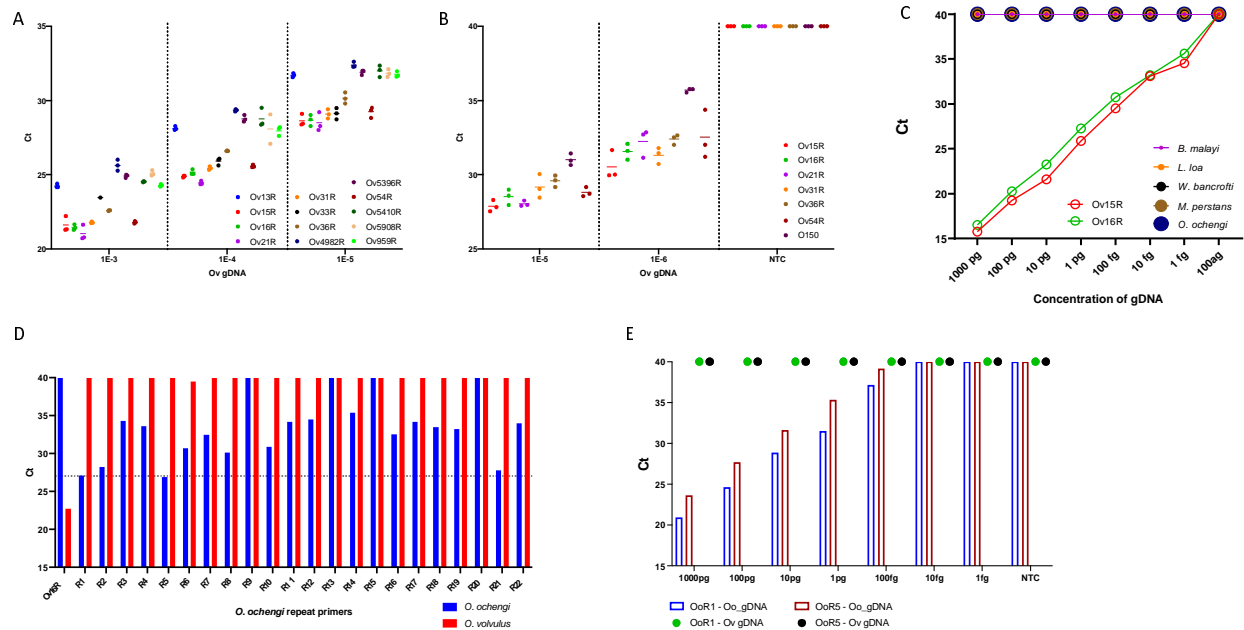
477

478

479

480

Figure 1



481

482 **Figure 1**

483 Identification of *Onchocerca volvulus* and *Onchocerca ochengi* repeat elements. (A)

484 The graph depicts the screening of the identified repeat elements for limits of detection
 485 (plotted as Ct-values on the y-axis) by qPCR using dilutions of *O. volvulus* gDNA. (B)

486 The graph represents the efficiency of the top five assays targeting repeated elements

487 in comparison with O-150. (C) The graph depicts the specificity of Ov16R and Ov15R

488 with serial dilutions of gDNA across major filarial parasites of humans. (D) The bar

489 graph depicts the screening of the identified repeat elements for limits of detection

490 (plotted as Ct-values on the y-axis) by qPCR using *O. ochengi* (blue) and *O. volvulus*

491 (red) gDNA. (E) The bar graph shows the limits of detection (plotted as Ct-values on the

492 y-axis) of *O. ochengi* repeat assays (OoR1 and OoR5) by qPCR using dilutions of *O.*

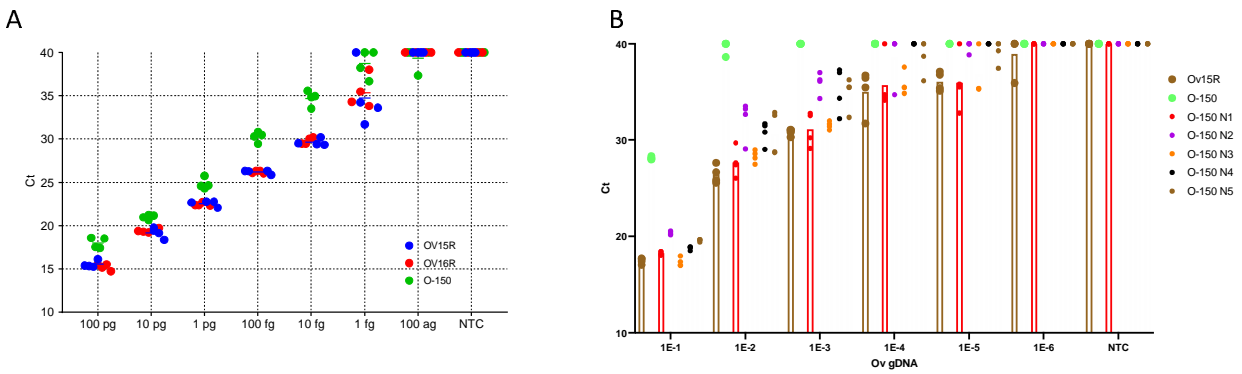
493 *ochengi* (red and blue) and *O. volvulus* (green and black) gDNA. No amplifications were

494 set to 40 cycles.

495

496

Figure 2



497

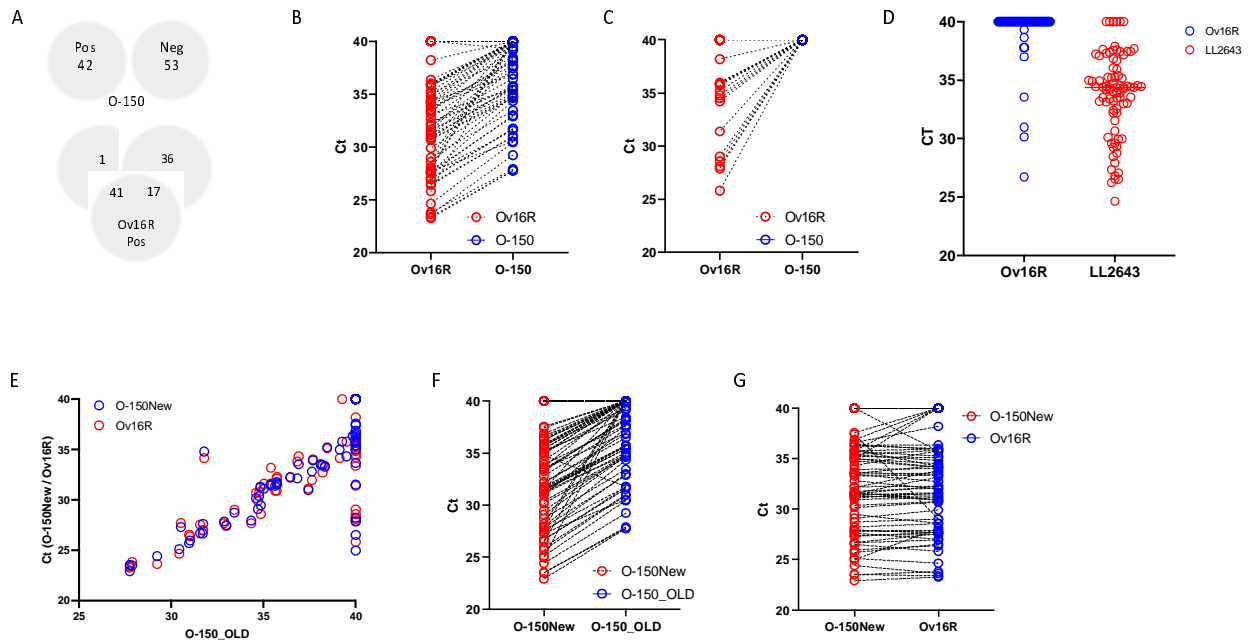
498 **Figure 2**

499 Development of new assays for *O. volvulus*. (A) The graph represents the efficiency of
500 the Ov16R (red) and Ov15R (blue) in comparison with O-150 (green) across different
501 concentrations of *O. volvulus* gDNA. (B) Screening of re-designed O-150 new assays
502 (O-150 N1-N5) for limits of detection (plotted as Ct-values on the y-axis) in comparison
503 with Ov15R and current O-150 qPCR assay

504

505

Figure 3



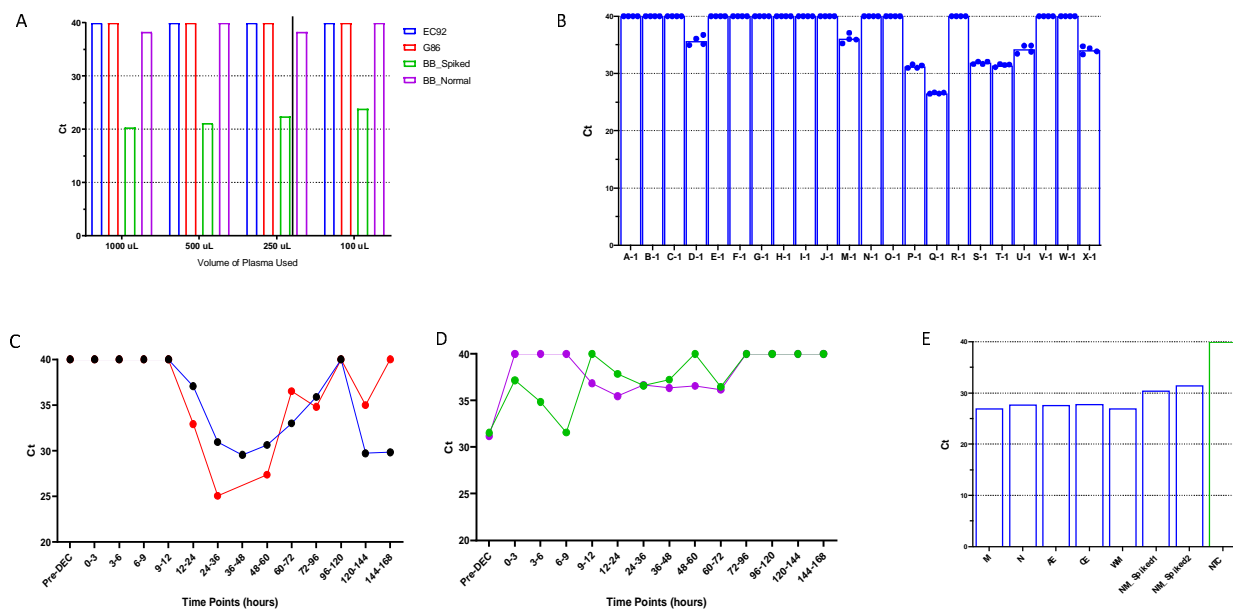
506

507 **Figure 3**

508 Efficiency of Ov16R and O-150New (A) The VENN diagram denotes the O-150 qPCR
509 status of skin snips (top panel), with Ov16R detecting 17 additional samples missed by
510 O-150. (B/C) The graph represents the paired Ct values obtained by Ov16R and O150,
511 and the 17 additional samples being detected by Ov16R that were O-150 negative. (D)
512 Ov16R sensitivity is improved (Ct values) compared to O-150 but does not detect any
513 new additional samples from *Loa loa* co-infected area. (E) Graph depicts the correlation
514 of the O150 assay with that of O-150New and Ov16R. (F&G) The graph shows the
515 paired comparison of O150New with O-150 (O-150_OLD) or Ov16R.

516

Figure 4



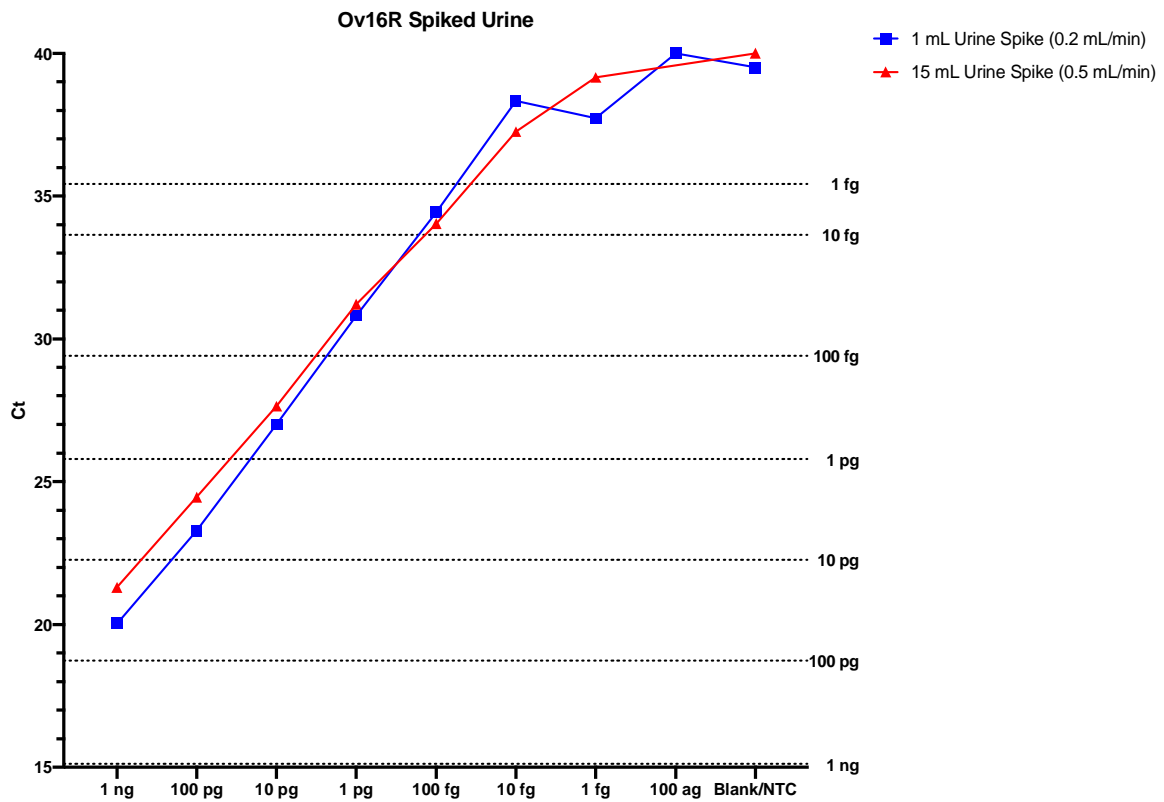
517

518 **Figure 4**

519 Efficacy of ccfDNA from plasma and urine. (A) the graph represents the Ov16R qPCR
 520 status (Ct values) of ccfDNA extracted from 1000 ul, 500 ul, 250 ul and 100 ul of pooled
 521 sera (n=10) from Ov-infected individuals from Guatemala (G86), Ecuador (EC92) or
 522 pooled plasma of healthy blood bank volunteers (n=10) with or without Ov-gDNA
 523 spiked. (B) the graph represents the Ov16R qPCR status (Ct value) with ccfDNA
 524 extracted from 1 ml of urine from Ov-infected individuals before treatment (C&D) the
 525 time course results of Ov16R qPCR with ccfDNA extracted from post-treatment samples
 526 (E) the graph represents the Ov16R status of 5 fresh urine samples from Cameroon.

527

Figure 5



528

529 **Figure 5**

530 Efficacy of ccfDNA from chitosan-modified filter membrane. The graph shows the

531 Ov16R qPCR (Ct values) of DNA extracted from 1 ml or 15 ml of normal urine spiked

532 with varying concentrations of gDNA. The dotted lines denote the Ct values of

533 respective concentrations of gDNA.

534