

1 **Effect of Higher-Dose Fluvoxamine vs Placebo on Time to Sustained Recovery in Outpatients with**
2 **Mild to Moderate COVID-19: A Randomized Clinical Trial**

3
4 The Accelerating COVID-19 Therapeutic Interventions and Vaccines (ACTIV)-6 Study Group and
5 Investigators

6
7
8
9
10
11
12
13
14
15
16
17
18
19
20
21
22
23
24
25
26

Address for correspondence: Susanna Naggie, MD, MHS, Duke Clinical Research Institute, Duke
University School of Medicine, 300 West Morgan St, Suite 800, Durham, NC 27701. Email:
susanna.naggie@duke.edu.

27 **Abstract**

28 **Background:** The impact of fluvoxamine in reducing symptom duration among outpatients with mild to
29 moderate coronavirus disease 2019 (COVID-19) remains uncertain. Our objective was to assess the
30 effectiveness of fluvoxamine 100 mg twice daily, compared with placebo, for treating mild to moderate
31 COVID-19.

32 **Methods:** The ACTIV-6 platform randomized clinical trial aims to evaluate repurposed medications for
33 mild to moderate COVID-19. Between August 25, 2022, and January 20, 2023, 1175 participants were
34 enrolled at 103 US sites for evaluating fluvoxamine; participants were age ≥ 30 years with confirmed
35 SARS-CoV-2 infection and ≥ 2 acute COVID-19 symptoms for ≤ 7 days. Participants were randomized to
36 receive fluvoxamine 50 mg twice daily on day 1 followed by 100 mg twice daily for 12 additional days or
37 to placebo. The primary outcome was time to sustained recovery (defined as at least 3 consecutive days
38 without symptoms). Secondary outcomes included time to death; time to hospitalization or death; a
39 composite of hospitalization, urgent care visit, emergency department visit, or death; COVID clinical
40 progression scale; and difference in mean time unwell.

41 **Results:** Among participants who were randomized and received study drug, the median age was 50 years
42 (IQR 40-60), 66% were female, 45% identified as Hispanic/Latino, and 77% reported ≥ 2 doses of a
43 SARS-CoV-2 vaccine. Among 589 participants who received fluvoxamine and 586 who received placebo,
44 differences in time to sustained recovery were not observed (adjusted hazard ratio [HR], 0.99 [95%
45 credible interval, 0.89-1.09; P(efficacy) = 0.4]). Additionally, unadjusted, median time to sustained
46 recovery was 10 days (95% CI 10-11) in both the intervention and placebo group. No deaths were
47 reported. Thirty-five participants reported healthcare utilization events (*a priori* defined as death,
48 hospitalization, emergency department/urgent care visit); 14 in the fluvoxamine group compared with 21
49 in the placebo group (HR 0.69; 95% CrI 0.27–1.21; P(efficacy)=0.86) There were 7 serious adverse
50 events in 6 participants (2 with fluvoxamine and 4 with placebo).

51 **Conclusions:** Among outpatients with mild to moderate COVID-19, treatment with fluvoxamine does not
52 reduce duration of COVID-19 symptoms.

53 **Trial Registration:** ClinicalTrials.gov (NCT04885530).

54

55 INTRODUCTION

56 Several clinical trials have studied approved medications as repurposed oral therapies for outpatients with
57 mild to moderate COVID-19.^{1,2} Fluvoxamine, a selective serotonin reuptake inhibitor, has been proposed
58 to decrease the host inflammatory response and prevent progression to severe COVID-19.³ A systematic
59 review and meta-analysis suggested that fluvoxamine reduced hospitalization rates among adults with
60 symptomatic COVID-19; however, this evidence was insufficient for national guidelines to recommend
61 its use.^{4,5} Fluvoxamine at doses of 100 mg 2 or 3 times daily have demonstrated a reduction in emergency
62 department visits and hospitalizations,^{5,6} although tolerability may be a limitation. A lower dose of 50 mg
63 twice daily had improved tolerability,⁶ but this lower dose was not efficacious in two clinical trials.^{2,5,7,8}

64 The ongoing Accelerating Coronavirus Disease 2019 Therapeutic Interventions and Vaccines
65 (ACTIV-6) platform randomized clinical trial evaluates repurposed medications in the outpatient setting.⁷
66 A previous arm of ACTIV-6 randomized 1331 adults with mild to moderate COVID-19 to receive
67 fluvoxamine 50 mg twice daily or placebo for 10 days.⁷ The primary outcome of time to sustained
68 recovery was not different between the fluvoxamine and placebo groups and no differences were
69 observed in need for higher-level medical care or death. The lack of efficacy with fluvoxamine 50 mg
70 twice daily may be due to an inadequate dose. With conflicting results across several large randomized
71 controlled trials, there is a need to confirm the potential therapeutic benefits of fluvoxamine at the higher
72 100 mg twice daily dose.

73 For this study, the ACTIV-6 platform sought to evaluate the effect of higher-dose fluvoxamine (50
74 mg twice daily for 1 day, followed by 100 mg twice daily for 12 days) on time to sustained recovery from
75 mild to moderate COVID-19 or progression to severe disease in non-hospitalized adults.

76

77 METHODS

78 Trial Design and Oversight

79 ACTIV-6 is a double-blind randomized placebo-controlled platform trial to study repurposed medications
80 for the treatment of outpatients with mild to moderate COVID-19 in the United States.⁹ ACTIV-6 utilizes

81 a decentralized approach for integration into diverse healthcare and community-based settings, including
82 COVID-19 clinical testing and treatment programs. The complete protocol and statistical analysis plan are
83 provided in **Supplement 1**.

84 The trial protocol was approved by a central institutional review board with review at each site.
85 Informed consent was obtained from each participant either via written or electronic consent. An
86 independent data and safety monitoring committee oversaw participant safety, efficacy, and trial conduct.

87

88 **Participants**

89 Since the study platform opened on June 11, 2021, over 7500 participants have been randomized across 6
90 study arms. The fluvoxamine 100 mg twice daily study arm enrolled participants from 103 sites between
91 August 25, 2022 and January 20, 2023. Participants were identified by individual sites or by self-referral
92 via the central study telephone hotline. The study was closed in anticipation of achieving the prespecified
93 sample size accrual target and due to concerns for limited availability of study product, could not over-
94 enroll.

95 Study eligibility criteria at the time of screening were confirmed at the site level and included age
96 ≥ 30 years, SARS-CoV-2 infection confirmed with a positive polymerase chain reaction or antigen test
97 (including home-based testing) within the past 10 days, and actively experiencing ≥ 2 COVID-19
98 symptoms for ≤ 7 days from the time of consent (full eligibility criteria in **Supplement 1**). Symptoms
99 included fatigue, dyspnea, fever, cough, nausea, vomiting, diarrhea, body aches, chills, headache, sore
100 throat, nasal symptoms, and new loss of sense of taste or smell. Individuals meeting the following criteria
101 were excluded from participation: current or recent hospitalization for COVID-19, ongoing or planned
102 participation in other interventional trials for COVID-19, current or recent use (within 14 days) of
103 fluvoxamine or other selective serotonin (or norepinephrine) reuptake inhibitors or monoamine oxidase
104 inhibitors, bipolar disorder, pregnant or nursing, or known allergy or contraindications to fluvoxamine.
105 Prior receipt of COVID-19 vaccinations and current use of approved or emergency use authorization
106 therapeutics for outpatient treatment of COVID-19 were allowed.

107 **Randomization**

108 Due to the adaptive nature of ACTIV-6, study drugs could be added or removed based on evolving data.
109 Unlike previous active drugs within the platform, the open period of enrollment for fluvoxamine 100 mg
110 did not overlap with the enrollment period of other active drugs. Consequently, the randomization process
111 simplified to a 1:1 matched placebo allocation provided by a random number generator and there was no
112 pooled placebo contribution.

113

114 **Interventions**

115 A 13-day supply of either fluvoxamine or matched placebo, provided by the manufacturer (Apotex,
116 Toronto, Canada), was dispensed to the participant via home delivery from a centralized pharmacy.
117 Randomized participants were instructed to self-administer oral fluvoxamine at a dose of 50 mg (one 50
118 mg tablet) or matching placebo twice daily for 1 day, followed by 100 mg (two 50 mg tablets) or
119 matching placebo twice daily for 12 days, for a total 13-day course.

120

121 **Outcome Measures**

122 The primary outcome was time to sustained recovery within 28 days, defined as the time from receipt of
123 drug to the third of 3 consecutive days without COVID-19 symptoms.^{7,9} This measure was selected *a*
124 *priori* from the 2 possible primary outcomes of the platform. The other possible primary outcome—time
125 to hospitalization or death—transitions to a secondary outcome when not selected as the primary
126 outcome, per the statistical analysis plan. Participants who died within the follow-up period were deemed
127 to have not recovered, regardless of whether they were symptom free for 3 consecutive days. Secondary
128 outcomes included 3 time-to-event endpoints administratively censored at day 28: time to death (number
129 of events permitting), time to hospitalization or death (number of events permitting), or time to first
130 healthcare utilization (a composite of urgent care visits, emergency department visits, hospitalization, or
131 death). Additional secondary outcomes included mean time spent unwell through day 14 and the WHO

132 COVID Clinical Progression Scale on days 7, 14, and 28. Quality of life measures using the PROMIS-29
133 are being collected through day 180 and are not included in this report.

134

135 **Trial Procedures**

136 The ACTIV-6 platform was designed to occur remotely, with all screening and eligibility procedures
137 reported by participants and confirmed at the site level. Positive laboratory results for SARS-CoV-2 were
138 verified by study staff prior to randomization. During screening procedures, participants shared
139 demographic information, medical history, use of concomitant medications, COVID-19 symptoms, and
140 completed quality of life surveys.

141 A centralized investigational pharmacy packaged and provided active or placebo study products
142 via mail to the address provided by participants. Shipping and delivery information was provided by the
143 courier.

144 Daily assessments were reported by participants via the study portal during the first 14 days of the
145 study, regardless of symptom status. If participants were not recovered by day 14, the daily assessments
146 continued until recovery or day 28. Planned remote follow-up visits occurred on days 28, 90, and 120.
147 Additional study procedure details are provided in **Supplement 2**.

148

149 **Statistical Analysis Plan**

150 Inferences about the primary outcome and exploratory analyses involving secondary outcomes were
151 based primarily on covariate-adjusted regression modeling, supplemented by unadjusted models and
152 graphical and tabular displays. Proportional hazard regression was used for the time-to-event analysis,
153 and cumulative probability ordinal regression models were utilized for ordinal outcomes. Longitudinal
154 ordinal regressions models were used to estimate the differences in mean time spent unwell, a summary
155 which compares the number of days in the first 14 days of follow-up spent unrecovered.

156 The planned primary endpoint analysis was a Bayesian proportional hazards model. The primary
157 inferential, decision-making quantity was the posterior distribution for the treatment assignment hazard

158 ratio (HR), with a $HR > 1$ indicating a beneficial effect. If the posterior probability of benefit exceeded
159 0.95 during interim or final analyses, efficacy of the intervention would be met. To preserve type I error
160 < 0.05 , the prior for the treatment effect parameter on the log relative hazard scale was a normal
161 distribution centered at 0 and scaled to a standard deviation (SD) of 0.1. All other parameter priors were
162 weakly informative, using the software default of 2.5 times the ratio of the SD of the outcome divided by
163 the SD of the predictor variable. The study was designed to have 80% power to detect a HR of 1.2 in the
164 primary endpoint from a total sample size of 1200 participants with planned interim analyses at 300, 600,
165 and 900 participants.

166 The model for the primary endpoint included the following predictor variables: randomization
167 assignment, age, sex, duration of symptoms prior to study drug receipt, calendar time, vaccination status,
168 geographical location, call center indicator, and baseline symptom severity. The proportional hazard
169 assumption of the primary endpoint was evaluated by generating visual diagnostics such as the log-log
170 plot and plots of time-dependent regression coefficients for each predictor in the model.

171 Secondary endpoints were analyzed with Bayesian regression models (either proportional hazards
172 or proportional odds). Weakly informative priors were used for all parameters. Secondary endpoints were
173 not used for formal decision-making, and no decision threshold was selected. Analyses resulting from
174 secondary endpoints should be interpreted as exploratory given the potential for type I errors due to
175 multiple comparisons. The same sets of covariates used in the primary endpoint model were used in the
176 analysis of the secondary endpoints, provided that the endpoint accrued sufficient events to be analyzed
177 with covariate adjustment.

178 All available data were utilized to compare each active study drug vs placebo control, regardless
179 of post-randomization adherence to study protocols. The modified intention-to-treat (mITT) cohort
180 comprised all participants who were randomized, who did not withdraw before delivery of study drug,
181 and for whom the courier confirmed study drug delivery. Day 1 of the study was defined as the day of
182 study drug delivery. Participants who opted to discontinue data collection were censored at the time of
183 last contact, including those participants who did not complete any surveys or phone calls after receipt of

184 study drug. Missing data among covariates for both primary and secondary analyses were addressed with
185 conditional mean imputations because the amount of missing covariate data was small.

186 A predefined analysis examined potential variations in treatment effects based on participant
187 characteristics. The assessment of treatment effect heterogeneity encompassed age, symptom duration,
188 body mass index (BMI), symptom severity on day 1, calendar time (indicative of circulating SARS-CoV-
189 2 variant), sex, and vaccination status. Continuous variables were analyzed as such, without stratifying
190 into subgroups.

191 Analyses were performed with R¹⁰ version 4.3 with the following primary packages: rstanarm,^{11,12}
192 rmsb,¹³ and survival.¹⁴

193

194 **RESULTS**

195 **Study Population**

196 A total of 1208 participants provided consent and were randomized to either fluvoxamine or placebo. A
197 small subset of 33 participants were excluded from the analysis population post randomization because
198 study drug was not delivered within 7 days of randomization. The modified intent to treat (mITT) cohort
199 included the 1175 participants who were randomized, received study drug, and did not withdraw from the
200 study before receiving study drug. In the mITT analysis cohort, 589 participants were randomized to
201 receive fluvoxamine and 586 participants were randomized to placebo (**Figure 1**).

202 The characteristics of the participant population were similar to those observed in other ACTIV-6
203 cohorts (**Table 1**). The median age was 50 years (IQR 40–60); 66% were female; the most commonly
204 self-reported races were White (73%), Black/African American (9%), Middle Eastern (6%), or Asian
205 (5%), and 45% of participants identified as Hispanic/Latino. The most common comorbidities were
206 obesity (36%) and hypertension (26%). Overall, 77% of participants reported having received at least 2
207 SARS-CoV-2 vaccine doses. About 13% of participants reported taking a recommended COVID-19
208 therapy (**Table 1**).

209 While only participants with symptoms were enrolled in the study, some participants reported no
210 symptoms on the day of study drug delivery, which is defined as study day 1. At the time of study drug
211 delivery, 9% of participants reported no symptoms, while the majority reported mild (54%) or moderate
212 (36%) symptoms. The symptom burden for each of the 13 COVID19-related symptoms at baseline is
213 reported in **eTable 1**. Participants were enrolled within a median of 3 days of patient-reported symptom
214 onset (IQR 2–5 days) and study drug was delivered within a median of 5 days of symptom onset (IQR 4–
215 7 days). The complete distribution of time between onset of COVID-19 symptoms and study drug
216 delivery is reported in **eFigure 1**.

217

218 **Primary Outcome**

219 Differences in time to sustained recovery were not observed in either unadjusted Kaplan-Meier curves
220 (**Figure 2**) or covariate-adjusted regression models (**Table 2**). The median time to sustained recovery was
221 10 days (95% CI 10-11) in both the fluvoxamine and placebo groups. The posterior probability for benefit
222 was 0.4, with an HR of 0.99 (95% CrI 0.89–1.09) (**Figure 3**). Sensitivity analyses yielded similar
223 estimates of the treatment effect (**eFigure 2**).

224

225 **Secondary Outcomes**

226 No deaths were observed in either group; 1 participant in the fluvoxamine group and 2 in the placebo
227 group were hospitalized (**Table 2, eFigure 3**). There were 14 (2.4%) participants in the fluvoxamine
228 group and 21 (3.6%) in the placebo group who reported hospital admission or emergency department or
229 urgent care visits (**Table 2, eFigure 4**). Analyzed as a time to first event outcome, the HR for the
230 composite healthcare outcome was 0.69 (95% CrI 0.27–1.21) with a posterior probability of efficacy of
231 0.86 (**Figure 3**).

232 With clinical events like hospitalization and death being rare among participants, the COVID
233 clinical progression scale (**Supplement 2**) simplified into a self-reported evaluation of home activity

234 levels (limited vs not) collected on study days 7, 14, and 28 (**eFigure 5**). By day 7, more than 95% of
235 responding participants reported no limitations in activity, thus this endpoint did not meet prespecified
236 thresholds for beneficial treatment effect. Likewise, the difference in mean time unwell was similar
237 between the fluvoxamine and placebo groups (11.3 days [CI 11.1–11.5] vs 11.5 days [CI 11.2–11.7]; 95%
238 CrI -0.58 to 0.23; P[efficacy]=0.79). (**Figure 3**)

239

240 **Adverse Events and Tolerability**

241 Seven serious adverse events were reported in six participants (**eTable 2**), all among participants who
242 reported taking study medication at least once. Three events in two participants were reported in the
243 fluvoxamine group, including aggravated asthma, community-acquired pneumonia, and Guillain-Barre
244 syndrome. Four participants in the placebo group reported one serious adverse event each, including
245 ruptured appendix, diabetic foot ulcer, partial bowel obstruction, and perforated intestinal diverticulitis.
246 The incidence of serious events was low without evidence of higher events in the intervention group.

247 Among participants who reported adherence data, 6.4% (36/561) in the fluvoxamine group
248 compared with 2.1% (13/563) in the placebo group reported at least once “I am not planning to take my
249 medicine because I feel worse,” consistent with a prior hypothesis that fluvoxamine may not be
250 universally tolerated, especially at higher doses.

251

252 **Heterogeneity of Treatment Effect Analyses**

253 When stratified by baseline symptom severity and the timing of treatment relative to the onset of
254 symptoms, no meaningful separation between fluvoxamine and placebo participants was observed in the
255 distribution of the primary outcome (**eFigure 6**). Likewise, exploratory analyses to understand how the
256 treatment effect for the primary outcome may vary with a priori defined patient characteristics was
257 completed. The analysis suggests the possibility that participants who received fluvoxamine sooner after
258 symptom onset fared poorer than placebo (**eFigure 7**); whereas, participants who received fluvoxamine
259 about 7 days after symptom onset may have done better than placebo (interaction p-value: 0.05). In

260 additional exploratory analyses without covariate adjustment, the differences in recovery between those
261 that received drug within 3 days of symptom onset and those that received drug on days 6 to 8 were
262 plotted (**eFigure 8**).

263

264 **DISCUSSION**

265 Among outpatient adults with mild to moderate COVID-19, treatment with fluvoxamine 100 mg twice
266 daily for 13 days, compared with placebo, did not improve time to sustained recovery in this large trial of
267 1175 participants. The present study is one in a series of trials investigating fluvoxamine as a potential
268 treatment for COVID-19 in an outpatient setting. STOP COVID⁵ (n=152), TOGETHER⁶ (n=1497), and
269 COVID OUT² (n=661) trials were designed around clinical events such as death, hospitalization,
270 hypoxemia, and emergency department visits. The TOGETHER trial was stopped early for superiority of
271 fluvoxamine 100 mg twice daily, compared with placebo, with a 32% reduction in the primary composite
272 endpoint of hospitalization or extended care in an emergency setting.⁵ A follow up TOGETHER trial
273 (n=1476) testing fluvoxamine 100mg twice daily with inhaled budesonide in a majority vaccinated
274 population demonstrated a 50% reduction in the same composite endpoint.⁸ In contrast, the COVID-OUT
275 and ACTIV-6 trials studying fluvoxamine 50 mg twice daily did not identify a benefit for fluvoxamine.²
276 ACTIV-6 is the only trial with a primary outcome of patient-reported sustained recovery, and in this trial
277 of fluvoxamine 100 mg twice daily for 13 days, there was no evidence of benefit. A secondary composite
278 outcome of death or healthcare utilization (including urgent care or emergency department visits or
279 hospitalizations) suggested one-third fewer events in the fluvoxamine group compared with placebo.
280 Although this difference was not conclusive at the defined decision-making thresholds, the clinical value
281 of reducing disease progression and the need for healthcare utilization should not be underestimated from
282 the patient's perspective.

283 The evolution of the pandemic, with changes in the severity of COVID-19 over time and
284 increasing natural and/or vaccine-induced immunity, suggests that the circumstances of the present study
285 are meaningfully different than those of earlier trials. COVID-19 severity has abated over time with lower

286 rates of hospitalization and death as partial immunity has increased. If clinical event rates for death or
287 hospitalizations continue to decline, future trials may need to focus on composite outcomes such as
288 healthcare utilization or enroll much larger number of participants to conclusively understand the impact
289 of any therapeutic agent on outcomes. Testing time to recovery in clinical trials remains appealing as a
290 symptom reduction is clinically relevant and patient-centric; however, several medications including
291 nirmatrelvir, metformin, and molnupiravir do not reduce symptom duration while showing clinical
292 benefit.^{2,15}

293 Exploratory findings from the heterogeneity of treatment effect analysis prompt the hypothesis
294 that participants receiving fluvoxamine later in the course of their COVID-19 infection may have had
295 more rapid symptom resolution compared to placebo in contrast to the difference between those who
296 received drug earlier in the course of disease. A plausible hypothesis is that the immune modulating
297 activity of fluvoxamine may not be beneficial until the latter stage of disease when the host experiences
298 dysregulated immune responses.¹⁶

299 A strength of this study is the improved ethnic diversity, with 45% of participants identifying as
300 Hispanic/Latino ethnicity. The pandemic exposed significant health disparities, with a large burden of
301 more severe disease outcomes being reported from underrepresented and marginalized populations
302 including Black/African American and Hispanic/Latino communities.¹⁷⁻¹⁹ This increased diversity in
303 ACTIV-6 came from a concerted national effort to improve recruitment strategies, prioritize Spanish
304 language document translation, and onboard sites from diverse communities.

305

306 **Limitations**

307 The trial has several limitations. Due to the evolving nature of the pandemic and the population enrolled,
308 few clinical events occurred, limiting the ability of the trial to study the treatment effect on clinical
309 outcomes either as a primary or secondary outcomes. The remote nature of the trial, while in part a
310 strength, is also a limitation. The decentralized approach in theory expands access by allowing
311 participation regardless of geographic location. The primary limitation of the remote design is that study

312 drug must be sent by courier, which resulted in additional days between symptom onset and the start of
313 treatment, which could be particularly relevant for a proposed antiviral mechanism of action.

314

315 **Conclusions**

316 Among outpatient adults with mild to moderate COVID-19, treatment with fluvoxamine 100 mg twice
317 daily, compared with placebo, did not improve time to sustained recovery. While one-third fewer
318 healthcare utilization events occurred in the fluvoxamine intervention group, the difference was not
319 conclusive.

320

321 **Funding/Support**

322 ACTIV-6 is funded by the National Center for Advancing Translational Sciences (NCATS)
323 (3U24TR001608-06S1). Additional support for this study was provided by the Office of the Assistant
324 Secretary for Preparedness and Response, Biomedical Advanced Research and Development Authority
325 (Contract No.75A50122C00037). The Vanderbilt University Medical Center Clinical and Translational
326 Science Award from NCATS (UL1TR002243) supported the REDCap infrastructure.

327

328 **Group Information**

329 The members of the Accelerating COVID-19 Therapeutic Interventions and Vaccines (ACTIV)-6 Study
330 Group and Investigators appear in the Supplement.

331

332

333

334 **References**

- 335 1. Venkatesan P. Repurposing drugs for treatment of COVID-19. *Lancet Respir Med.* 2021;9(7):e63.
336 doi:10.1016/S2213-2600(21)00270-8
- 337 2. Bramante CT, Huling JD, Tignanelli CJ, et al. Randomized Trial of Metformin, Ivermectin, and
338 Fluvoxamine for Covid-19. *N Engl J Med.* 2022;387(7):599-610. doi:10.1056/NEJMoa2201662
- 339 3. Sukhatme VP, Reiersen AM, Vayttaden SJ, Sukhatme VV. Fluvoxamine: A Review of Its
340 Mechanism of Action and Its Role in COVID-19. *Front Pharmacol.* 2021;12:652688.
341 doi:10.3389/fphar.2021.652688
- 342 4. COVID-19 Treatment Guidelines. Accessed September 5, 2023.
343 <https://www.covid19treatmentguidelines.nih.gov/>
- 344 5. Lenze EJ, Mattar C, Zorumski CF, et al. Fluvoxamine vs Placebo and Clinical Deterioration in
345 Outpatients With Symptomatic COVID-19: A Randomized Clinical Trial. *JAMA.*
346 2020;324(22):2292-2300. doi:10.1001/jama.2020.22760
- 347 6. Reis G, Dos Santos Moreira-Silva EA, Silva DCM, et al. Effect of early treatment with
348 fluvoxamine on risk of emergency care and hospitalisation among patients with COVID-19: the
349 TOGETHER randomised, platform clinical trial. *Lancet Glob Health.* 2022;10(1):e42-e51.
350 doi:10.1016/S2214-109X(21)00448-4
- 351 7. McCarthy MW, Naggie S, Boulware DR, et al. Effect of Fluvoxamine vs Placebo on Time to
352 Sustained Recovery in Outpatients With Mild to Moderate COVID-19: A Randomized Clinical
353 Trial. *JAMA.* 2023;329(4):296-305. doi:10.1001/jama.2022.24100
- 354 8. 14. Reis G, Dos Santos Moreira Silva EA, Medeiros Silva DC, et al. Oral Fluvoxamine With
355 Inhaled Budesonide for Treatment of Early-Onset COVID-19: A Randomized Platform Trial.
356 *Ann Intern Med.* 2023;176(5):667-675. doi:10.7326/M22-3305
- 357 9. Naggie S, Boulware DR, Lindsell CJ, et al. Effect of Ivermectin vs Placebo on Time to Sustained
358 Recovery in Outpatients With Mild to Moderate COVID-19: A Randomized Clinical Trial. *JAMA.*
359 2022;328(16):1595-1603. doi:10.1001/jama.2022.18590

- 360 10. R Core Team. *R: A Language and Environment for Statistical Computing*. R Foundation for
361 Statistical Computing; 2023.
- 362 11. Goodrich B, Gabry J, Ali I, Brilleman S. *Bayesian Applied Regression Modeling via Stan [R
363 Package Rstanarm]*. mc-stan.org; 2023.
- 364 12. Brilleman SL, Elci EM, Novik JB, Wolfe R. Bayesian Survival Analysis Using the rstanarm R
365 Package. *arXiv*. 2020. doi:10.48550/arxiv.2002.09633
- 366 13. Harrell F. *Bayesian Regression Modeling Strategies [R Package Rmsb]*. The Comprehensive R
367 Archive Network; 2022.
- 368 14. Therneau TM. *Survival Analysis [R Package Survival]*. The Comprehensive R Archive Network;
369 2023.
- 370 15. Guan Y, Puenpatom A, Johnson MG, et al. Impact of molnupiravir treatment on patient-reported
371 coronavirus disease 2019 (COVID-19) symptoms in the phase 3 MOVE-OUT trial: A randomized,
372 placebo-controlled trial. *Clin Infect Dis*. 2023;Online ahead of print. doi: 10.1093/cid/ciad409.
- 373 16. Hashimoto Y, Suzuki T, Hashimoto K. Mechanisms of action of fluvoxamine for COVID-19: a
374 historical review. *Mol Psychiatry*. 2022;27(4):1898-1907. doi:10.1038/s41380-021-01432-3
- 375 17. COVID-19 Provisional Counts - Health Disparities. Accessed September 5, 2023.
376 https://www.cdc.gov/nchs/nvss/vsrr/covid19/health_disparities.htm
- 377 18. Lopez L, Hart LH, Katz MH. Racial and Ethnic Health Disparities Related to COVID-19. *JAMA*.
378 2021;325(8):719-720. doi:10.1001/jama.2020.26443
- 379 19. Acosta AM, Garg S, Pham H, et al. Racial and Ethnic Disparities in Rates of COVID-19-
380 Associated Hospitalization, Intensive Care Unit Admission, and In-Hospital Death in the United
381 States From March 2020 to February 2021. *JAMA Netw Open*. 2021;4(10):e2130479.
382 doi:10.1001/jamanetworkopen.2021.30479
- 383
- 384
- 385

386 **Figure Legends**

387 **Figure 1.** Participant flow in a trial of higher-dose fluvoxamine for mild to moderate COVID-19

388 **Figure 2.** Primary outcome of time to sustained recovery

389 **Figure 3.** Time to sustained recovery; hospitalization, urgent or emergency care visits, or death; and mean

390 time unwell

391

392

393

394 **Table 1.** Baseline characteristics

Variable	Fluvoxamine (n=589)	Placebo (n=586)
Age, median (IQR), yrs	50.0 (39.0-61.0)	50.0 (41.0-60.0)
Age < 50 yrs, no. (%)	287 (48.7)	286 (48.8)
Sex ^a , no. (%)		
Female	385 (65.37)	388 (66.21)
Male	204 (34.63)	198 (33.79)
Race ^b , not mutually exclusive, no. (%)		
American Indian or Alaska Native	5 (0.85)	11 (1.88)
Asian	29 (4.92)	25 (4.27)
Black or African American	55 (9.34)	52 (8.87)
Middle Eastern or North African	40 (6.79)	32 (5.46)
Native Hawaiian or Other Pacific Islander	1 (0.17)	3 (0.51)
White	431 (73.17)	423 (72.18)
None of the above	29 (4.92)	43 (7.34)
Prefer not to answer	9 (1.53)	15 (2.56)
Ethnicity, No. (%)		
Hispanic/Latino	257 (43.63)	277 (47.27)
Not Hispanic/Latino	332 (56.37)	309 (52.73)
Region ^c , No. (%)		
Midwest	100 (16.98)	103 (17.58)
Northeast	97 (16.47)	86 (14.68)
South	321 (54.50)	333 (56.83)
West	71 (12.05)	64 (10.92)
Recruited via call center ^d , no. (%)	17 (2.89)	19 (3.24)
Body mass index (BMI), median (IQR), kg/m ²	28.2 (24.9-32.1)	28.0 (25.1-31.7)
BMI > 30, kg/m ² , no. (%)	222 (37.7)	202 (34.5)
Weight, median (IQR), kg	78.0 (68.0-91.2)	78.0 (68.0-90.7)
Medical history ^e , no./total (%)		
Heart disease	35/553 (6.33)	35/550 (6.36)
Diabetes	67/554 (12.09)	72/550 (13.09)
High blood pressure	135/553 (24.41)	150/550 (27.27)
Chronic obstructive pulmonary disease	18/553 (3.25)	24/550 (4.36)
Asthma	77/553 (13.92)	76/550 (13.82)
Chronic kidney disease	4/553 (0.72)	10/550 (1.82)
Tobacco use within past year	87/554 (15.70)	93/550 (16.91)
Malignant cancer	13/549 (2.37)	14/548 (2.55)
SARS-CoV-2 Vaccine status, no. (%)		
Not vaccinated	138 (23.43)	133 (22.70)
Vaccinated, 1 dose	2 (0.34)	0 (0.00)
Vaccinated, 2+ doses	449 (76.23)	453 (77.30)
Days between symptom onset and receipt of drug, median (IQR)	5 (4-7)	5 (4-7)
Days between symptom onset and enrollment, median (IQR)	3 (2-5) [n=568]	4 (2-5) [n=562]

Variable	Fluvoxamine (n=589)	Placebo (n=586)
Symptom burden on study day 1 ^f , no./total (%)		
None	54/542 (10.0)	46/542 (8.5)
Mild	289/542 (53.3)	291/542 (53.7)
Moderate	197/542 (36.3)	198/542 (36.5)
Severe	2/542 (0.4)	7/542 (1.3)
COVID-19 medications, no. (%)		
Remdesivir	1 (0.17)	0 (0.00)
Nirmatrelvir+ ritonavir	71 (12.05)	58 (9.90)
Monoclonal antibodies	12 (2.04)	4 (0.68)
Molnupiravir	4 (0.68)	7 (1.19)

395 Abbreviations: BMI, body mass index (calculated as weight in kilograms divided by height in meters squared); COPD, chronic
396 obstructive pulmonary disease; IQR, interquartile range
397 ^aParticipants also had the option to select “unknown,” “undifferentiated,” or “prefer not to answer.” Only “male” and “female”
398 were selected in this cohort.
399 ^bParticipants may have selected any combination of the race descriptors, including “prefer not to answer.” Consequently, the sum
400 of counts over all categories will not match the column total.
401 ^cThe following state groups define each region. Northeast includes Connecticut, Maine, Massachusetts, New Hampshire, Rhode
402 Island, Vermont, New Jersey, New York and Pennsylvania; Midwest includes Indiana, Illinois, Michigan, Ohio, Wisconsin, Iowa,
403 Kansas, Minnesota, Missouri, Nebraska, North Dakota, and South Dakota; South includes Delaware, District of Columbia,
404 Florida, Georgia, Maryland, North Carolina, South Carolina, Virginia, West Virginia, Alabama, Kentucky, Mississippi, Tennessee,
405 Arkansas, Louisiana, Oklahoma, and Texas; West includes Arizona, Colorado, Idaho, New Mexico, Montana, Utah, Nevada,
406 Wyoming, Alaska, California, Hawaii, Oregon, and Washington.
407 ^dPatients may have alternatively been recruited at local clinical sites.
408 ^eMedical history was provided by participants, responding to the prompts: “Has a doctor told you that you have any of the
409 following?” and “Have you ever experienced any of the following (select all that apply)” and “Have you ever smoked tobacco
410 products?”
411 ^fEach day, participants were asked to “Please choose the response that best describes the severity of your COVID-19 symptoms
412 today” with the response options being “no symptoms,” “mild,” “moderate,” and “severe.”
413
414

415 **Table 2. Primary and Secondary Outcomes**

	Fluvoxamine (n=589)	Placebo (n=586)	Adjusted Estimate^a (95% Interval)	Posterior P(efficacy)
Primary Endpoint, Time to recovery^b				
Skeptical prior (primary analysis)			HR: 0.99 (0.89, 1.09)	0.40
Non-informative prior (sensitivity analysis)			HR: 0.98 (0.86, 1.11)	0.38
No prior (sensitivity analysis)			HR: 0.98 (0.86, 1.11) ^c	--
Secondary endpoints^d				
Hospitalization, urgent care, emergency department visit, or death ^e through day 28, no. (%)	14 (2.38)	21 (3.58)	HR: 0.69 (0.27, 1.21)	0.86
Mortality at day 28, no. (%)	0 (0.00)	0 (0.00)	--	--
Hospitalization or death through day 28, no. (%)	1 (0.17)	2 (0.34)	HR: 0.51 (0.05, 5.64) ^c	--
Clinical progression ordinal outcome scale				
Day 7			OR: 1.15 (0.51, 1.83) (n=1026)	0.38
Day 14			OR: 0.66 (0.23, 1.16) (n=1026)	0.90
Day 28			OR: 0.94 (0.29, 1.74) (n=1018)	0.63
Mean time unwell ^f , days (95% CrI)	11.28 (11.06, 11.50)	11.45 (11.24, 11.66)	Δ: -0.17 (-0.58, 0.23)	0.79

Abbreviations: HR, hazard ratio; OR, odds ratio; Δ, difference; CrI, credible interval.

^aUnless otherwise noted, a highest-density credible interval. Adjustment variables for time to recovery, mortality, composite clinical endpoints, and clinical progression in addition to randomization assignment: age (as restricted cubic spline), sex, duration of symptoms prior to receipt of study drug, calendar time (as restricted cubic splines), vaccination status, geographic region (Northeast, Midwest, South, West), call center indicator, and baseline symptom severity.

^bTime to recovery is from receipt of study drug to achieving the third of 3 days of recovery. HR>1.0 is favorable for faster recovery for fluvoxamine 100 compared with placebo.

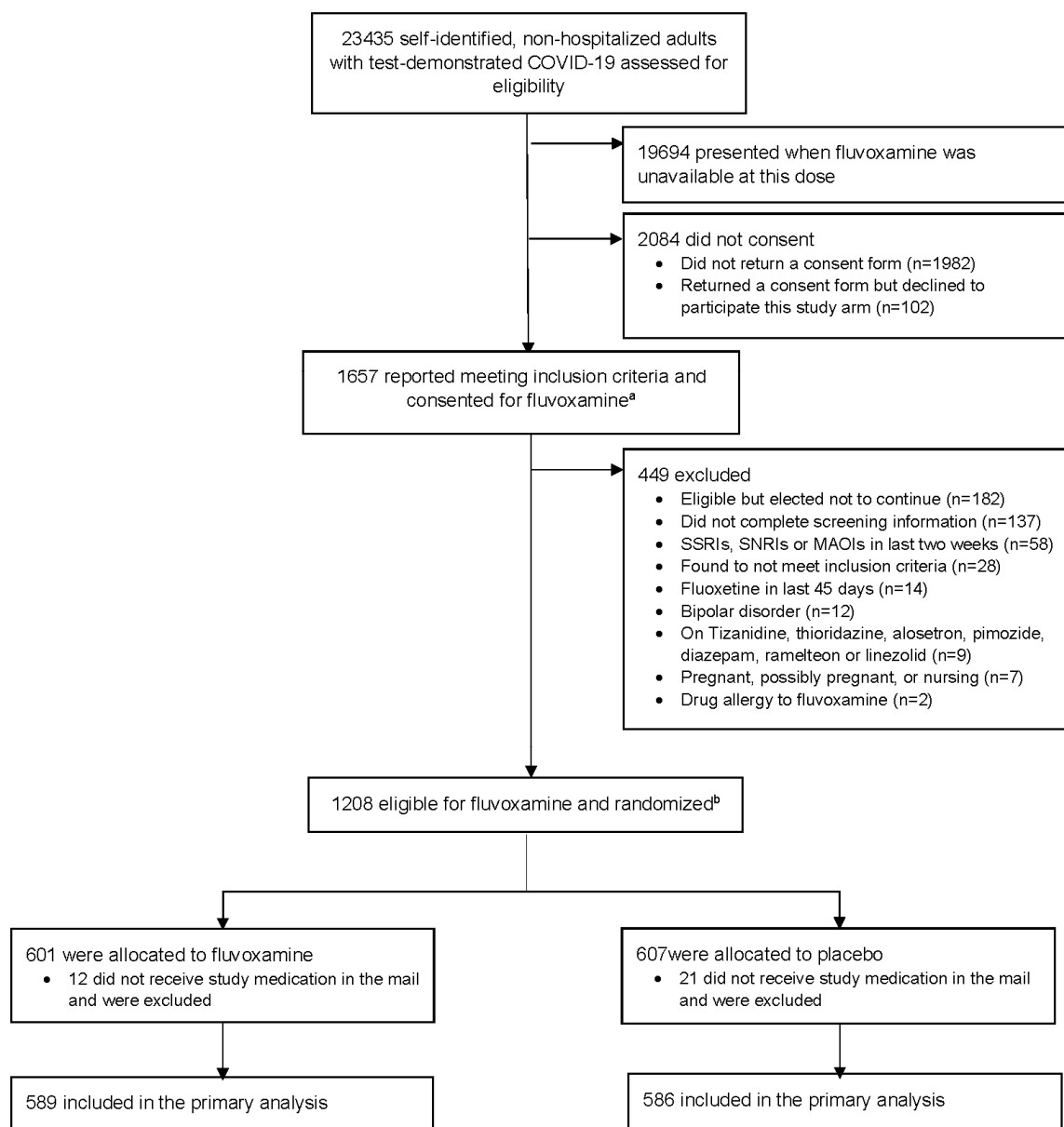
^cLow event rate precluded covariate adjustment. Maximum partial likelihood estimate (no prior).

^dFor secondary outcomes, an HR or OR less than 1 favors fluvoxamine. Similarly, a difference in means, Δ, less than 0 favors fluvoxamine.

^eA priori, death was a component of the composite outcome; however, no deaths were observed.

^fAdjustment variables for mean time unwell in addition to randomization assignment included age and calendar time.

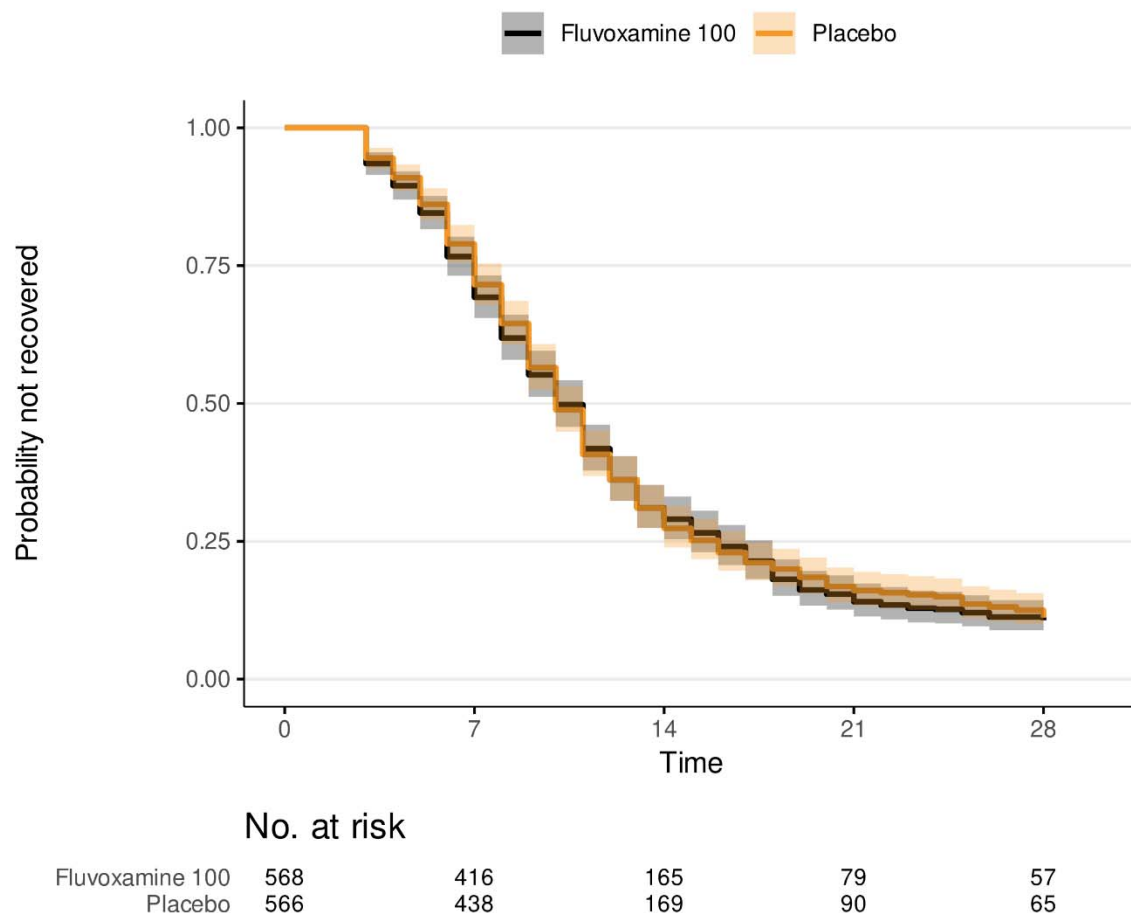
417 **Figure 1.** Participant flow in a trial of higher-dose fluvoxamine for mild to moderate COVID-19



^a In this platform trial with multiple study drugs, participants were able to choose which agents they were willing to be randomized to.

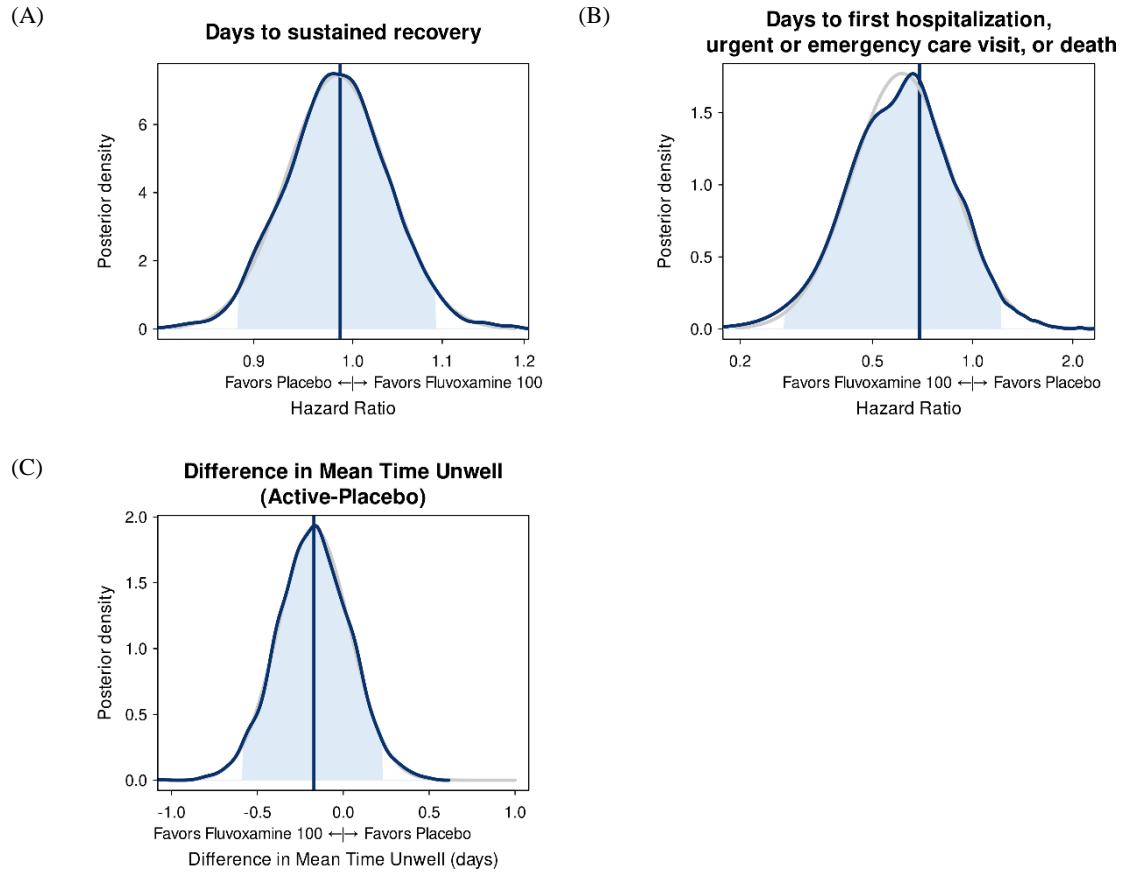
^b No additional study arms were open while participants were enrolled in this study arm; participants were randomized between fluvoxamine and matched placebo.

419 **Figure 2.** Primary outcome of time to sustained recovery



420
 421 Recovery was defined as the third of 3 consecutive days without symptoms. Forty-five participants were
 422 censored for complete nonresponse, 51 were censored after partial response, and all others were followed
 423 up until recovery, death, or the end of short-term 28-day follow-up. Median time to recovery was 10 (95%
 424 CI 10 to 11) days in the fluvoxamine and placebo groups. Shaded regions denote the pointwise 95% CIs.
 425

426 **Figure 3.** Time to sustained recovery; hospitalization, urgent or emergency care visits, or death; and mean
427 time unwell
428



429

430 The vertical lines represent the estimated mean of the posterior distribution. Posterior density is the
431 relative likelihood of posterior probability distribution. Outcomes with higher posterior density are more
432 likely than outcomes with lower posterior density. Blue density lines are kernel density estimates
433 constructed from posterior draws. Grey density lines are parametric estimates, also estimated from
434 posterior draws. The posterior density plots of all the covariates in the primary outcome model are shown
435 in the supplement (**eFigure 9**).