

1 **Interplay of Race and Neighborhood Deprivation on Ambulatory Blood Pressure**
2 **in Young Adults**

3
4 Soolim Jeong M.S.^a, Braxton A. Linder M.S.^a, Alex M. Barnett M.S.^a, McKenna A.
5 Tharpe M.S.^a, Zach J. Hutchison M.S.^a, Meral N. Culver M.S.^a, Sofia O. Sanchez
6 M.B.A., R.D.^a, Olivia I. Nichols Ph.D.^b, Gregory J. Grosicki Ph.D.^c, Kanokwan Bunsawat
7 Ph.D.^{d,e}, Victoria L. Nasci Ph.D.^f, Eman Y. Gohar Ph.D.^f, Thomas E. Fuller-Rowell
8 Ph.D.^b, Austin T. Robinson Ph.D.^a

9
10 ^a Neurovascular Physiology Laboratory, School of Kinesiology, Auburn University,
11 Auburn, AL, USA 36849

12 ^b Department of Human Development and Family Studies, Auburn University, Auburn,
13 AL, USA 36849

14 ^c Department of Health Sciences and Kinesiology, Biodynamics and Human
15 Performance Center, Georgia Southern University (Armstrong Campus), Savannah,
16 GA, USA 31419

17 ^d Department of Internal Medicine, Division of Geriatrics, University of Utah, Salt Lake
18 City, UT, USA 84132

19 ^e Geriatric Research, Education, and Clinical Center, George E. Wahlen Department of
20 Veterans Affairs Medical Center, Salt Lake City, UT, USA 84148

21 ^f Division of Nephrology and Hypertension, Vanderbilt University Medical Center,
22 Nashville, TN, USA 37232

23
24 **Short title:** Race, Neighborhood, and Ambulatory Blood Pressure

25
26 **Address for correspondence:**

27 Austin T. Robinson, PhD
28 Assistant Professor
29 Director, Neurovascular Physiology Laboratory (NVPL)
30 School of Kinesiology
31 Auburn University
32 Auburn, AL 36849
33 email: atr0026@auburn.edu

34
35 **Length (words):** 9,326
36

37

38

39 **Abstract (250 words)**

40 **Background:** Ambulatory blood pressure (**BP**) monitoring measures nighttime BP and
41 BP dipping, which are superior to in-clinic BP for predicting cardiovascular disease (**CVD**),
42 the leading cause of death in America. Compared with other racial/ethnic groups, Black
43 Americans exhibit elevated nighttime BP and attenuated BP dipping, including in young
44 adulthood. Social determinants of health contribute to disparities in CVD risk, but the
45 contribution of neighborhood deprivation on nighttime BP is unclear. Therefore, we
46 examined associations between neighborhood deprivation with nighttime BP and BP
47 dipping in young Black and White adults. **Methods:** We recruited 21 Black and 26 White
48 participants (20 M/27 F, mean age: 21 years, body mass index: 25 ± 4 kg/m²) for 24-hour
49 ambulatory BP monitoring. We assessed nighttime BP and BP dipping (nighttime:daytime
50 BP ratio). The area deprivation index (**ADI**) was used to measure neighborhood
51 deprivation. Associations between ADI and ambulatory BP were examined. **Results:**
52 Black participants exhibited higher nighttime diastolic BP compared with White
53 participants (63 ± 8 mmHg vs 58 ± 7 mmHg, $p=0.003$), and attenuated BP dipping ratios for
54 both systolic (0.92 ± 0.06 vs 0.86 ± 0.05 , $p=0.001$) and diastolic BP (0.86 ± 0.09 vs
55 0.78 ± 0.08 , $p=0.007$). Black participants experienced greater neighborhood deprivation
56 compared with White participants (ADI scores: 110 ± 8 vs 97 ± 21 , $p<0.001$), and ADI was
57 associated with attenuated systolic BP dipping ($\rho=0.342$, $p=0.019$). **Conclusions:** Our
58 findings suggest neighborhood deprivation may contribute to higher nighttime BP and
59 attenuated BP dipping, which are prognostic of CVD, and more prevalent in Black adults.
60 Targeted interventions to mitigate the effects of neighborhood deprivation may help to
61 improve nighttime BP.

2

62 **Clinical Trial Registry:** URL: <https://www.clinicaltrials.gov>; Unique identifier:

63 NCT04576338

64

65 **Keywords:** ambulatory blood pressure, social determinants of health, health behaviors,
66 racial disparities, cardiovascular disease

67

68 **Non-standard Abbreviations and Acronyms:** **ACE** – adverse childhood experience;

69 **BP** – blood pressure; **CVD** – cardiovascular disease; **DBP** – diastolic blood pressure;

70 **ET-1** – endothelin-1; **M-index** – melanin-index; **MVPA** – moderate to vigorous physical

71 activity; **PRA** – plasma renin activity; **SDoH** – social determinants of health; **SBP** –

72 systolic blood pressure

73

74 **Clinical Perspective:**

75 • We demonstrate young Black adults exhibit higher nighttime blood pressure and
76 attenuated nighttime blood pressure dipping compared with young White adults.

77 • Black adults were exposed to greater neighborhood deprivation, which was
78 associated with attenuated blood pressure dipping, irrespective of race.

79 • Our findings add to a growing body of literature indicating neighborhood
80 deprivation may contribute to increased cardiovascular disease risk.

81

82

83

84

85 Introduction

86 Cardiovascular disease (**CVD**) is the leading cause of death worldwide and is
87 responsible for approximately 875,000 deaths annually in the United States.¹ High blood
88 pressure (**BP**), or hypertension, is a major contributor to CVD.^{1,2} Black Americans exhibit
89 the highest prevalence and severity of hypertension in the United States and develop
90 elevated BP at an earlier age than other racial/ethnic groups.³⁻⁵ Accumulating evidence
91 demonstrates social determinants of health (**SDoH**), such as neighborhood deprivation⁶
92 and socioeconomic status⁷ are associated with adverse CVD-related health outcomes.⁸
93 For example, disadvantaged neighborhoods are more likely to be afflicted by higher crime
94 rates and violence,⁹ which may promote stress and unhealthy coping behaviors that may
95 contribute to elevated BP.¹⁰ Compared with other racial/ethnic groups in the United
96 States, Black Americans are disproportionately exposed to neighborhood deprivation. For
97 example, predominately minority neighborhoods are more likely to have limited access to
98 safe spaces for leisure-time physical activity and healthful foods.^{11,12} These neighborhood
99 characteristics may influence health behaviors that are associated with BP such as
100 physical activity, sleep, and diet.¹³⁻¹⁵ Collectively, these findings suggest that the higher
101 prevalence of elevated BP in Black Americans may be influenced, in part, by
102 neighborhood deprivation.

103 Ambulatory 24-hour BP monitoring provides a comprehensive assessment of BP
104 through the acquisition of daytime and nighttime BP measures.¹⁶ Thus, ambulatory BP
105 monitoring is an advantageous tool when confirming a diagnosis and identifying BP
106 phenotypes that would not be detected from a single clinic BP measurement.¹⁷ Further,
107 nighttime BP is superior to daytime BP in predicting CVD-related events in younger and

108 older individuals with and without hypertension.^{18,19} Lack of nighttime BP dipping (i.e.,
109 non-dipping; $\leq 10\%$ decrease in BP at night)²⁰ is also associated with CVD morbidities
110 such as heart failure, stroke, and end target organ damage.²¹ Black Americans exhibit an
111 increased risk for elevated nighttime BP and attenuated nighttime BP dipping,²² a
112 phenomenon that may begin at an early age.²³ Our prior data indicate there are racial
113 disparities in clinic BP in young adults,²⁴⁻²⁶ and neighborhood deprivation is a significant
114 mediator.²⁴ However, relations between SDoH (i.e., neighborhood deprivation) and health
115 behaviors with ambulatory BP are understudied.

116 The primary aim of this investigation was to examine associations between
117 neighborhood deprivation with ambulatory BP in young Black and White adults. We also
118 assessed health behaviors including physical activity, sleep, and dietary intake. We
119 hypothesized Black participants would exhibit higher nighttime BP and attenuated BP
120 dipping compared with White participants. Additionally, we hypothesized greater
121 neighborhood deprivation and poorer health behaviors would be associated with worse
122 ambulatory BP.

123 An exploratory aim of this investigation was to determine whether sodium-regulatory
124 pathways that play a critical role in BP differed by race and whether they were associated
125 with ambulatory BP or neighborhood deprivation. Specifically, we assessed renin-
126 angiotensin-aldosterone system (**RAAS**) hormones (i.e., serum aldosterone and plasma
127 renin activity (**PRA**), and urinary endothelin-1 (**ET-1**)). Prior data indicate serum
128 aldosterone and PRA are lower in Black adults compared with White adults.²⁷ This is
129 important as suppressed basal RAAS activity may hinder the ability to regulate BP,²⁸
130 particularly in the context of high dietary sodium, which is ubiquitous in the United

131 States.²⁹ Further, urinary ET-1 is a 21-amino acid natriuretic peptide and is critical for
132 sodium balance and BP regulation.³⁰ Previous work suggests adults with hypertension
133 demonstrate elevated renal ET-1 production, reported as urinary ET-1 excretion,
134 compared with adults with normal BP.^{31,32} However, whether these racial differences in
135 RAAS and potentially urinary ET-1 excretion may influence racial differences in
136 ambulatory BP patterns remains unclear. We hypothesized Black participants may
137 demonstrate lower blood concentrations of RAAS hormones and higher urinary ET-1
138 excretion than White participants, and that these biomarkers may be associated with
139 ambulatory BP and neighborhood deprivation.

140

141 **Methods**

142 **Study Participants**

143 All participants provided written and verbal consent prior to engaging in study
144 activities. Study protocol and procedures were approved by the Institutional Review Board
145 for Research Involving Human Subjects of Auburn University, and the trial was registered
146 on clinicaltrials.gov ([NCT04576338](https://clinicaltrials.gov/ct2/show/study/NCT04576338)). Additional details of the parent study conducted from
147 September 2018 to April 2019, have been described elsewhere.^{15,24,26} Participant ages
148 ranged from 20-23 years old. Exclusion criteria included: individual history of cancer,
149 diabetes, or any chronic disease; signs, or symptoms of disease (i.e., history of chest
150 pain, dizziness, unusual shortness of breath, etc.); stage two hypertension (i.e., BP
151 >140/90 mmHg);² body mass index >35 kg/m²; or use of cardiovascular-acting
152 medications. Female participants taking hormonal contraceptives (n=6) were permitted to
153 participate, and the menstrual cycle was not controlled for during the study.

154 All participants reported that both of their parents were either ‘Black’ or ‘White’ and
155 self-reported their race to be ‘Black’ or ‘White’. In addition to using self-report of race, a
156 social construct, we also quantified skin pigmentation, which can influence physiology
157 (e.g., vitamin D production)³³ and social experiences (e.g., colorism).^{34,35} As previously
158 described,^{25,26,33} skin pigmentation was measured as the melanin-index (M-index) using
159 reflectance spectrophotometry (DSM3 DermaSpectrometer; Cortex Technology,
160 Hadsund, Denmark). We measured the M-index on the inner aspect of the participant’s
161 upper arm because this region is easily accessible and represents constitutive skin
162 pigmentation due to its relatively low sun exposure.³³

163 **Study Design**

164 Residential information and SDoH questionnaires were collected in the parent study
165 (September 2018 to April 2019).¹⁵ Health behaviors (i.e., physical activity, sleep, diet), BP
166 measures (i.e., in-laboratory and ambulatory BP), and blood and urine samples were
167 collected between January and December 2021.²⁶ Detailed experimental procedures are
168 described below, and an overview of the study design was as follows: after providing
169 additional written consent, participants were provided actigraphy devices to characterize
170 seven-day activity and sleep patterns, and a three-day food and fluid log for dietary
171 assessment. Participants were outfitted with an ambulatory BP monitor and were
172 provided with a urine collection container for simultaneous 24-hour urine collection prior
173 to an in-person laboratory study visit where a venous blood sample was obtained.

174 **24-hour Ambulatory Blood Pressure Monitoring**

175 Participants wore a 24-hour ambulatory BP monitor (Suntech Oscar2) on their upper
176 arm programmed to measure BP every 20 minutes during awake hours and every 30

177 minutes during asleep hours based on self-report by the participant.¹⁷ Participants were
178 instructed to avoid alcohol, caffeine, and vigorous physical activity while wearing the
179 monitor following their laboratory visit. Ambulatory BP data was extracted using AccuWin
180 Pro software and processed by a single trained investigator (SJ). We applied the
181 American Heart Association's guidelines¹⁷ and defined daytime as 10 AM to 8 PM and
182 nighttime as midnight to 6 AM.³⁶ At least 20 daytime and 7 nighttime readings were
183 required for a participant's data to be included in the analysis.¹⁷ As previously described,³⁷
184 we derived average daytime and nighttime BP, BP dip ratio (average nighttime BP divided
185 by average daytime BP), and nighttime BP dipping (absolute difference between
186 nighttime BP and daytime BP). BP dip ratios allow for the comparison of BP dipping in
187 relation to daytime BP, thus providing a more comprehensive assessment of ambulatory
188 BP patterns than absolute dipping alone.³⁸

189 **Social Determinants of Health**

190 *Neighborhood socioeconomic disadvantage*

191 Participants identified their residential address, or closest geographical unit (e.g., city,
192 county) for each year of their life during their lab visit. To help identify and confirm the
193 correct residential addresses, our data collection team worked with participants using
194 Google Maps to confirm each address, and participants were encouraged to contact
195 family members or friends to assist in recalling each address. Consistent with previous
196 studies,³⁹ we identified primary residential addresses for each of three developmental
197 periods based on the number of years the participant lived in the neighborhood: early
198 childhood (ages 0-5 years), middle childhood (6-12 years), and adolescence (13-18

199 years). The same residential address could be used as the primary residence for multiple
200 developmental periods, if applicable.

201 We averaged the census tract level area deprivation index (**ADI**) scores across the
202 three developmental periods to calculate a cumulative childhood ADI score. These
203 Census survey years were chosen so that data for our sample, collected in 2018-2019
204 with an average age of 19 years at the time, closely corresponded to the three
205 developmental periods.^{15,24} The ADI is a composite measure of neighborhood
206 socioeconomic disadvantage composed of 17 poverty, education, housing, and
207 employment census-tract indicators and has been previously used to track neighborhood-
208 level disparities.⁴⁰ Each indicator was independently weighed by factor scores to ensure
209 poverty, income, and education had the largest relative weights. Similar to prior
210 studies,^{15,24} the composite score was standardized to have a mean of 100 and a standard
211 deviation (SD) of 20 to assist interpretation. Importantly, ADI is a validated approach for
212 comprehensively assessing neighborhood deprivation.⁴¹ Details on additional SDoH
213 variables measured in this study (i.e, socioeconomic status, perceived discrimination, and
214 adverse childhood experiences) can be found in **Data S1-S3**.

215 **Health Behaviors**

216 *Physical activity and sleep*

217 Participants were instructed to wear a validated tri-axial accelerometer⁴² (ActiGraph
218 wGT3X-BT, Pensacola, FL, USA) on their right hip for a minimum of seven consecutive
219 days with a minimum of seven days and 1,000 minutes of wear time per day prior to
220 laboratory visit. Participants were instructed to wear an Actiwatch Spectrum Plus monitor
221 (Philips Respironics) on the non-dominant wrist for 24 hours a day for seven to eight

222 consecutive days and nights with a minimum of six nights prior to laboratory visit to be
223 included in the analyses. Additional details regarding physical activity, sleep, and dietary
224 assessment can be found in **Data S4-S6**.

225

226 **Urinary and Blood Metabolic Biomarkers**

227 *24-hour urine collection*

228 Urine was collected for 24 hours before the study visit in a light-protected, sterile 3.5
229 L container.^{26,43} Participants were instructed to record the time of their first void into a
230 toilet on the day preceding the study visit, as well as their last void into the urine collection
231 container on the day of the study visit. Urine flow rate was used to derive urinary ET-1
232 excretion and was calculated from urine volume and self-reported time the participant
233 used the container in total. Based on National Health and Nutrition Examination Survey
234 recommendations,⁴⁴ we did not include data that required indexing to 24-hour urine flow
235 rate for participants (n=3) who self-reported a urine collection time of fewer than 22 hours.
236 We stored mixed aliquots from the 24-hour urine sample in cryogenic tubes at -80°C.

237 *Blood and urine biochemical analysis*

238 We assessed serum aldosterone and PRA to characterize potential racial differences
239 in RAAS and examine associations with urinary ET-1 excretion and ambulatory BP.
240 Serum aldosterone and PRA were measured in duplicate via radioimmunoassay at the
241 Wake Forest University Biomarker Analytical Core. The inter-assay coefficient of variation
242 was 6.8% for serum aldosterone and 5.3% for PRA. In addition, venous blood samples
243 were obtained from vacutainers treated with dipotassium ethylenediaminetetraacetic
244 acid. We assessed blood chemistry (i.e., glucose, lipids, and cholesterol) using an Alere

245 Cholestech LDX analyzer, per manufacturer's instructions (Abbott Laboratories, Abbott
246 Park, IL, USA). We assessed urinary ET-1 excretion from stored urine samples as ET-1
247 elicits natriuretic effects and regulates BP. All samples were assayed in triplicate using a
248 96-well QuantiGlo ELISA kit (CN: QET00B, R&D Systems). The kit's detection range was
249 0.023-0.102 pg/mL. The average intra-assay coefficient of variation for urinary ET-1 was
250 12.5%. We reported urinary ET-1 excretion as follows: concentration of the assayed
251 sample (pg/mL) x urine flow rate (mL/min).

252 **Statistical Analyses**

253 Outliers were identified for primary outcomes including BP, ADI, and kidney variables
254 using box plots. Any data points exceeding 1.5 times the length of the interquartile range
255 (i.e., 1.5 times the range between the 1st and 3rd quartiles below the 1st and above the
256 3rd quartiles) were defined as outliers and removed from the dataset prior to analysis.
257 We inspected variables for normality using the Shapiro-Wilk test and quantile-quantile
258 plots. Racial comparisons were made using independent samples *t*-test for normally
259 distributed data and the Mann-Whitney *U* test for non-normally distributed data. We used
260 Cohen's *d* to assess the effect size for normally distributed data,⁴⁵ interpreted as small (*d*
261 = 0.2-0.49), medium (*d* = 0.5-0.79), and large (*d* > 0.8). We used Rank-biserial correlation
262 to assess effect size for non-normally distributed data,⁴⁶ interpreted as small (0-0.19),
263 medium (0.2-0.29), large (0.3-0.39), and very large (0.4-1.0). Ambulatory BP outcomes
264 were compared by race and time (daytime and nighttime) using mixed-effect models.
265 Sidak's multiple comparisons were used to determine pairwise comparisons upon
266 detecting significant main or interaction effects. Pearson's *r* (normally distributed data)
267 and Spearman's *rho* (non-normally distributed data) correlations were conducted to

268 assess associations between SDoH, health behaviors, and urinary ET-1 excretion with
269 ambulatory BP measures. We used multiple regression models to examine outcomes
270 associated with systolic BP and report standardized estimates and 95% confidence
271 intervals for individual variables and adjusted R^2 for overall model fit. Statistical analyses
272 were completed using Jamovi 2.3.21.0 and GraphPad 9.5.0 (GraphPad Prism Software,
273 San Diego, CA, USA) with *a priori* significance set as $p \leq 0.05$ for all statistical analyses.
274 Using American Psychological Association convention, when we report “ $ps \leq 0.###$ ” it
275 represents the highest p value being discussed is less than 0.0### and vice versa for
276 when we report “ $ps \geq 0.###$ ”.

277 **Results**

278 Descriptive characteristics of our Black (n=21) and White (n=26) participants and
279 blood and urine biomarkers are presented in **Table 1**. Black participants exhibited a
280 higher M-index than White participants ($p < 0.001$). No racial differences in biological sex
281 proportions, clinical BP values, or blood glucose or lipids were observed ($ps \geq 0.111$).
282 Black participants demonstrated lower serum aldosterone, but PRA was not different
283 between Black and White participants. Lastly, we did not observe a racial difference in
284 urinary ET-1 excretion ($p = 0.592$).

285 *Black participants exhibited elevated nighttime diastolic BP and attenuated BP dipping*

286 Average daytime and nighttime systolic and diastolic BP split by race are presented
287 in **Figure 1**. We observed a significant interaction ($p = 0.003$) and time effect ($p < 0.001$),
288 but no main effect of race on ambulatory systolic BP (**Figure 1A**, $p = 0.222$). There were
289 no significant post-hoc differences for ambulatory systolic BP. For diastolic BP, significant

290 interaction ($p = 0.021$), time ($p < 0.001$), and race ($p = 0.022$) effects were observed
291 (**Figure 1B**). Post-hoc testing revealed nighttime diastolic BP was higher in Black
292 participants compared with White participants ($p = 0.003$). Black participants exhibited
293 higher systolic ($p = 0.001$) and diastolic ($p = 0.007$) BP dip ratios (**Figure 1C**) and lower
294 systolic ($p = 0.008$) and diastolic ($p = 0.017$) absolute BP dipping compared with White
295 participants (**Figure 1D**).

296 *Race differences in SDoH and health behaviors and relations with ambulatory BP*

297 Racial differences in SDoH and health behaviors are presented in **Table 2**. Black
298 participants reported greater neighborhood deprivation than White participants for all
299 developmental periods ($ps \leq 0.018$). Black participants reported a lower income:needs
300 ratio compared with White participants ($p = 0.014$) and Black participants reported higher
301 ACEs than White participants ($p = 0.028$). In contrast, there was no racial difference in
302 perceived discrimination ($p = 0.329$). Regarding health behaviors, Black participants
303 reported fewer minutes of MVPA than White participants ($p = 0.008$). However, there was
304 no racial difference in average daily steps or sedentary time ($ps \geq 0.067$). Black
305 participants also exhibited shorter sleep duration and poorer sleep efficiency than White
306 participants ($ps \leq 0.024$). Lastly, Black participants reported lower dietary total fiber,
307 soluble fiber, insoluble fiber, calcium, magnesium, and potassium than White participants
308 ($ps \leq 0.042$).

309 Associations between ADI and nighttime systolic BP are presented in **Figure 2 A-D**
310 and associations between ADI and systolic BP dip ratio are presented in **Figure 2 E-H**.
311 Corresponding associations between ADI and nighttime diastolic BP and diastolic BP dip

312 ratio are presented in **Supplemental Figure 1**. Early childhood, middle childhood,
313 adolescence, and cumulative ADI were not correlated with nighttime systolic (**Figure 2A-**
314 **D**, $p_s \geq 0.063$) or diastolic BP (**Supplemental Figure 1A-D**, $p_s \geq 0.160$). Early childhood,
315 middle childhood, and cumulative ADI were positively correlated with systolic BP dip ratio
316 (**Figure 2 E, F, H**, $p_s \leq 0.044$), but there were no associations between ADI and diastolic
317 BP dip ratio (**Supplemental Figures 1E-H**, $p_s \geq 0.314$).

318 Additional associations between SDoH and health behaviors with nighttime systolic
319 and diastolic BP, or systolic and diastolic BP dip ratios are presented in **Table 3**.
320 Specifically, we performed bivariate correlations between the variables of interest with
321 nighttime systolic and diastolic BP and systolic and diastolic BP dip ratios. Discrimination
322 was positively correlated with nighttime diastolic BP ($p = 0.044$) but not nighttime systolic
323 BP or systolic/diastolic BP dip ratios ($p_s \geq 0.242$). No other SDoH or health behavior was
324 correlated with nighttime systolic and diastolic BP, nor systolic and diastolic BP dip ratios
325 ($p_s \geq 0.069$).

326 *Associations between sodium-regulatory biomarkers with ambulatory BP*

327 Associations between aldosterone, PRA, and urinary ET-1 with nighttime systolic BP
328 are presented in **Figure 3 A-C** and associations between aldosterone, PRA, and urinary
329 ET-1 and systolic BP dip ratio are presented in **Figure 3 D-F**. Corresponding associations
330 between aldosterone, PRA, and urinary ET-1 and nighttime diastolic BP and diastolic BP
331 dip ratio are presented in **Supplemental Figure 2**. Aldosterone, PRA, and urinary ET-1
332 excretion were not correlated with nighttime systolic or diastolic BP ($p_s \geq 0.844$), nor
333 systolic or diastolic BP dip ratios ($p_s \geq 0.255$). Associations between aldosterone, PRA,

334 and urinary ET-1 with SDoH, health behaviors, and dietary intake are presented in
335 **Supplemental Table 2**. Interestingly, PRA was correlated with sleep efficiency ($p =$
336 0.002) and magnesium ($p = 0.027$). There were no associations between urinary ET-1
337 excretion and SDoH ($ps \geq 0.174$) or health behaviors ($ps \geq 0.109$) except potassium
338 intake was negatively correlated with urinary ET-1 excretion ($p = 0.012$).

339 *Adjustment for social determinants of health and health behaviors on ambulatory BP*

340 We performed a series multiple regressions to examine variables that may have
341 potential independent associations with nighttime systolic BP, presented in **Table 4**. Race
342 alone (model 1) was not associated with nighttime systolic BP ($\beta = 0.545$, $p = 0.103$).
343 After controlling age, sex, and BMI (model 2), race ($\beta = 0.876$, $p = 0.004$) and sex ($\beta = -$
344 0.599, $p < 0.001$) were associated with nighttime systolic BP. Further, after controlling for
345 SDoH (model 3) and health behaviors (model 4), race ($\beta = 1.180$, $p = 0.012$) and sex (β
346 = -0.747, $p < 0.001$) were independently associated with nighttime systolic BP and the
347 overall model was significant ($R^2 = 0.341$, $p = 0.028$). Similar multiple regression models
348 were used to examine variables associated with systolic BP dip ratio (**Supplemental**
349 **Table 3**) and nighttime diastolic BP and BP dip ratio (**Supplemental Tables 4 & 5**). In
350 the fully adjusted model (model 4) for systolic BP dip ratio, race ($p = 0.043$), age ($p =$
351 0.042), and ACEs ($p = 0.022$) were associated with systolic BP dip ratio and the overall
352 model was significant ($R^2 = 0.446$, $p = 0.006$) (**Supplemental Table 3**). In the fully
353 adjusted model (model 4) for nighttime diastolic BP, race ($p = 0.016$) was associated with
354 nighttime diastolic BP, but the overall model was not significant (**Supplemental Table 4**).
355 Regarding nighttime diastolic BP dip ratio, no individual variables were significantly
356 associated, nor was the overall model significant (**Supplemental Table 5**).

357 We performed an exploratory analysis comparing nighttime systolic BP dippers with
358 non-dippers irrespective of race in **Supplemental Table 6**. Non-dippers reported greater
359 ADI during middle childhood ($p = 0.038$) and exhibited lower MVPA compared to dippers
360 ($p = 0.029$). Apart from these two variables there were no differences in SDoH, health
361 behaviors, or blood/urine biomarkers in systolic BP dippers compared with non-dippers
362 ($ps \geq 0.092$). Lastly, we also performed preliminary sex comparisons, irrespective of race,
363 for BP and blood/urine biomarkers which are reported in **Supplemental Table 7**.
364 Compared with female participants, male participants exhibited higher screening systolic
365 BP ($p = 0.034$) and nighttime systolic BP ($p < 0.001$). Male participants also exhibited
366 higher PRA compared to female participants ($p = 0.029$). There were no sex differences
367 for any of the remaining variables assessed ($ps \geq 0.252$). Of the variables for which we
368 observed a sex difference we explored potential main or interaction effects for sex and
369 race. **Supplemental Figure 3** illustrates a race by sex comparison for nighttime systolic
370 BP which revealed significant effects of race and sex ($p < 0.001$).

371 **Discussion**

372 The purpose of this investigation was to examine associations between neighborhood
373 deprivation and ambulatory BP in young Black and White adults. The main findings were
374 that Black participants: 1) exhibited elevated nighttime diastolic BP and attenuated
375 systolic and diastolic BP dipping; 2) experienced greater neighborhood deprivation, which
376 was associated with attenuated systolic BP dipping; and 3) reported lower family income,
377 more ACEs, and poorer scores on certain health behaviors (i.e., less MVPA and sleep,
378 and worse dietary micronutrient intake) compared with White participants. Black
379 participants also exhibited lower aldosterone than White participants in our study.

380 However, we did not observe racial differences in urinary ET-1 excretion and PRA, or an
381 association between RAAS biomarkers or urinary ET-1 excretion and ambulatory BP. In
382 contrast to our hypothesis, controlling for SDoH and health behaviors did not attenuate
383 the association between race and nighttime BP. Nonetheless, this current investigation
384 suggests notable racial differences in ambulatory blood pressure patterns, SDoH, and
385 health behaviors among young adults. Together, these data suggest individuals who
386 reside in, or have spent significant time residing in disadvantaged neighborhoods may be
387 at higher risk for higher ambulatory BP, and consequently, increased CVD risk.

388 Consistent with our hypothesis and prior observations,^{47,48} we observed elevated
389 nighttime diastolic BP and attenuated systolic and diastolic BP dipping (i.e., dip ratio and
390 absolute dipping) in Black participants compared with White participants (**Figure 1**).
391 Similar BP patterns were observed in a normotensive, healthy cohort of young adults
392 (mean age: ~22 years old) whereby Black adults had higher ambulatory diastolic BP than
393 other racial/ethnic groups investigated.⁴⁹ Alarming, racial differences in ambulatory BP
394 have been observed in cohorts even younger than ours.^{50,51} Regarding BP dipping, there
395 are data indicating Black individuals also exhibit a higher prevalence of non-dipping
396 BP.^{52,53} Among adolescents, there are reports of Black adolescents exhibiting higher
397 systolic BP dip ratio and an attenuated decrease in absolute BP compared with White
398 adolescents, similar to the BP patterns observed in our group.⁵⁴ Thus, our findings add to
399 existing literature in demonstrating early signs of attenuated BP dipping in young Black
400 Americans. Collectively, these findings emphasize the need for primary prevention and
401 treatment strategies to control BP disparities in Black Americans, even in childhood prior
402 to the development of hypertension (i.e., primordial prevention).⁵⁵

403 We observed racial differences in neighborhood characteristics, specifically greater
404 ADI in Black participants compared with White participants (**Table 2**). Importantly,
405 neighborhood deprivation was correlated with systolic BP dip ratio (**Figure 2**).
406 Interestingly, non-dippers reported higher middle childhood ADI (**Supplemental Table 6**).
407 Our current findings are broadly in agreement with prior data from our group
408 demonstrating neighborhood deprivation in early childhood was associated with diastolic
409 BP, and explained 22% of the racial difference in BP between young Black and White
410 adults.²⁴ Regarding the higher ADI reported in Black compared with White participants in
411 our investigation, the history of systemic racism in the United States has increased the
412 likelihood of Black Americans facing substantial wealth inequality and live in segregated
413 and disadvantaged neighborhoods.^{24,56} Prior work also suggests the role of neighborhood
414 characteristics, segregation and safety, and historic redlining on cardiovascular health
415 outcomes.^{57,58,59} Thus, our findings and prior literature suggest BP is influenced by
416 environment and SDoH. In contrast to our hypothesis, racial differences in ambulatory BP
417 (e.g., nighttime BP and BP dip ratios) were robust even after statistical adjustment for
418 SDoH and health behaviors.

419 In regression models we generally did not observe independent associations between
420 SDoH or health behaviors on our primary BP outcomes, and in many cases race remained
421 associated with the BP outcome of interest. This finding may be attributed to unmeasured
422 exposures within the domain of neighborhood, and potential latent effects that emerge
423 later in life. For example, the association between some of the exposures we captured
424 and physiologic dysregulation may not emerge until later ages (e.g., midlife) whereas the
425 participants we studied were still young adults.⁶⁰ Further, allostatic load from cumulative

426 burden of psychosocial adversity influences numerous physiological systems, including
427 BP regulation.⁶¹ Although our study captured some aspects of psychosocial adversity
428 (i.e., ADI as a proxy for neighborhood exposures, ACEs, and perceived discrimination),
429 we were not able to capture all aspects of subjective psychosocial adversity, inclusive of
430 the cumulative effects of generational disadvantage, potential epigenetic modifications,
431 heightened perceived stress, and other coping strategies that influence cardiovascular
432 health. Nonetheless, our study highlights the influence of inequality including ADI, an
433 objective measure of neighborhood, and discrimination on ambulatory BP which is
434 prognostic of future cardiovascular events.²¹

435 Contrary to our findings, prior studies in young adults have demonstrated increased
436 ACEs are associated with poorer CV health.^{24,62} The reasons for this discrepancy are
437 unclear but may include the fact that we used a relatively affluent cohort of college
438 students whereas other studies may have used community samples with a greater
439 distribution of ACEs. While we did not observe a racial difference or association between
440 perceived discrimination and BP dipping, perceived discrimination was positively
441 correlated with nighttime systolic BP (**Table 3**). We acknowledge our finding of no racial
442 difference in perceived discrimination contrasts with the prevailing notion that Black
443 Americans experience higher perceived discrimination than White Americans. Possible
444 reasons for this discrepancy include: 1) our participants were college students who may
445 have experienced less discrimination than a community sample due to relative affluence
446 and young age; and 2) our modest sample size which may have been underpowered to
447 detect a difference.

448 We also observed racial differences in several health behaviors (i.e., MVPA and
449 sleep), though relations between these measures and ambulatory BP were not observed.
450 Regular physical activity is considered a ‘polypill’ for the prevention and treatment of
451 numerous disease states and reduced CVD risk.⁶³ However, we did not observe
452 associations between physical activity (i.e., MVPA and steps) or sedentary time with
453 ambulatory BP. Additionally, Black participants exhibited shorter sleep duration and
454 poorer sleep efficiency than White participants, but we did not observe associations
455 between sleep variables (i.e., duration and efficiency) and ambulatory BP. Consistent with
456 prior literature on racial differences in nutritional intake from our team^{25,26} and others,⁶⁴
457 Black participants reported lower dietary fiber, calcium, magnesium, and potassium
458 compared with White participants (**Table 2**). Neighborhood environments impact
459 availability and access to healthful food, and may contribute to racial differences in diet
460 quality and ultimately health disparities.⁶⁵ Increased dietary fiber, calcium, magnesium,
461 and potassium are associated with improved daytime and nighttime BP in adults with
462 normal BP.⁶⁶ However, we did not observe any association between diet and ambulatory
463 BP in our group (**Table 3**). The lack of significant associations between health behaviors
464 and BP is contrary to our hypothesis but may be explained by our relatively modest
465 college-specific sample.

466 Our exploratory aim was to examine potential racial differences in urinary ET-1
467 excretion and its association with SDoH and ambulatory BP. Urinary ET-1 excretion is a
468 reflection of renal ET-1 production and is associated with sodium excretion and regulating
469 BP in the context of high dietary salt.⁶⁷ In a healthy kidney, ET-1 plays a role in
470 vasodilation while promoting vasoconstriction in a diseased kidney.³⁰ Further, race-

471 specific associations between ET-1 and sodium excretion (i.e., stronger in Black vs. White
472 Americans) have been reported.⁶⁸ Contrary to our hypothesis, we did not observe a racial
473 difference in urinary ET-1 excretion (**Table 1**) or any associations between urinary ET-1
474 with ambulatory BP (**Figure 3 & Supplemental Figure 2**). Further, SDoH and health
475 behaviors were generally not associated with urinary ET-1 excretion (**Supplemental**
476 **Table 2**). A potential explanation for the lack of associations could be the timing of the
477 urine collection. Urinary ET-1 exhibits diurnal variation, and is lowest during nighttime
478 hours and is elevated during early daytime hours, suggesting diurnal patterns of urinary
479 ET-1 excretion.⁶⁹ However, we did not capture potential differences in circadian urinary
480 ET-1 excretion from our single 24-hour urine samples which did allow us to assess
481 potential diurnal differences. Regarding RAAS, in agreement with previous data,^{27,70,71}
482 Black participants in the current study exhibited lower aldosterone. While PRA was not
483 statistically different, it was directionally lower in Black participants with a medium effect
484 size (Rank biserial correlation = 0.29). Future studies may consider investigating
485 additional sodium regulatory pathways in addition to ET-1, aldosterone, and PRA that
486 possess endogenous circadian rhythms with nighttime BP.

487 **Limitations**

488 Our findings should be interpreted in the context of the following limitations. A potential
489 critique of our study is we did not control for menstrual cycle or hormonal contraception.
490 However, the argument has been made not controlling for menstrual cycle in studies not
491 specifically focused on the effect of menstrual phase increases ecological validity.⁷²
492 Importantly, we used identical approaches for both Black and White participants, and a
493 prior investigation reported ambulatory BP is not appreciably different across the

494 menstrual cycle.⁷³ Another limitation is an *a priori* power analysis was not conducted for
495 this small clinical trial (NCT04576338), as the goal was simply to recruit as many
496 participants as possible from the larger parent study during COVID-19. Last, census tract
497 measures of neighborhood socioeconomic disadvantage are crude proxies for a range of
498 social and physical environment factors and may not reflect an individual's lived
499 experience. However, the ADI is a reliable and objective composite measure to track
500 neighborhood-level disparities. Future studies focused on assessing perceptions of
501 neighborhood characteristics and individual experiences will complement the findings
502 from the present study. Strengths of this study include multiple measures of SDoH,
503 comprehensively characterizing the health behaviors our participants (i.e., physical
504 activity, sleep, diet) and 24-hour ambulatory BP.

505 **Conclusion**

506 We observed elevated nighttime diastolic BP and attenuated BP dipping in young
507 Black participants compared with young White participants. Black participants also
508 reported greater neighborhood deprivation, which correlated with systolic BP dipping.
509 Additionally, we observed less physical activity, shorter sleep duration and poorer sleep
510 efficiency, and indicators of poorer dietary intake in Black participants than White
511 participants, though none of these variables were associated with nighttime BP or BP
512 dipping. Longitudinal and quasi experiential studies are needed to further elucidate links
513 between neighborhood deprivation, BP, and CVD risk. Such studies will inform efforts to
514 address racial/ethnic and socioeconomic inequities in CVD and related risk factors.

22

516 **Acknowledgments:** The authors thank the individuals who participated in this study. We
517 also thank the form Auburn University undergraduate students Catherine Garrett, Sydney
518 Jones, Ben Loftis, Sarah Nix, and Julia Nunn for their assistance with data collection and
519 analyses.

520 **Sources of Funding:** This work was supported by National Institutes of Health (NIH)
521 grants K01HL147998 and R15HL165325 (to ATR), R15HL140504 (to TEFr),
522 UL1TR003096 (pilot funding to ATR and TL-1 Fellowships to SJ and BAL),
523 K99/R00DK119413 (to EYG), Auburn University Presidential Graduate Research
524 Fellowship (to BAL), and U.S. Department of Veterans Affairs Grants IK2RX003670 (to
525 KB).

526

527 **Disclosures:** None

528 **Conflict of Interest:** None

529

530 **Author Contributions**

	SJ	BAL	AMB	MAT	ZJH	MNC	SOS	OIN	GJG	KB	VLN	EYG	TEFR	ATR
Design	X												X	X
Experiments	X	X	X	X	X	X		X			X			X
Materials								X			X	X	X	X
Analysis	X					X	X							X
Interpretation	X	X					X		X	X	X	X	X	X
Writing	X								X	X				X
Editing	X	X		X	X	X	X		X	X	X	X	X	X
Approval	X	X	X	X	X	X	X	X	X	X	X	X	X	X

531

532

23

533 **Supplemental Materials**

534 Supplemental Methods

535 Tables S1-S7

536 Figures S1-S3

537

538

539 **References**

- 540 1. Tsao CW, Aday AW, Almarzooq ZI, Anderson CAM, Arora P, Avery CL, Baker-
541 Smith CM, Beaton AZ, Boehme AK, Buxton AE, et al. Heart Disease and Stroke
542 Statistics-2023 Update: A Report From the American Heart Association.
543 *Circulation*. 2023;147:e93-e621. doi: 10.1161/cir.0000000000001123
- 544 2. Fuchs FD, Whelton PK. High Blood Pressure and Cardiovascular Disease.
545 *Hypertension*. 2020;75:285-292. doi: 10.1161/hypertensionaha.119.14240
- 546 3. Lackland DT. Racial differences in hypertension: implications for high blood
547 pressure management. *Am J Med Sci*. 2014;348:135-138. doi:
548 10.1097/maj.0000000000000308
- 549 4. Carnethon MR, Pu J, Howard G, Albert MA, Anderson CAM, Bertoni AG, Mujahid
550 MS, Palaniappan L, Taylor HA, Jr., Willis M, et al. Cardiovascular Health in
551 African Americans: A Scientific Statement From the American Heart Association.
552 *Circulation*. 2017;136:e393-e423. doi: 10.1161/cir.0000000000000534
- 553 5. Thomas SJ, Booth JN, Dai C, Li X, Allen N, Calhoun D, Carson AP, Gidding S,
554 Lewis CE, Shikany JM, et al. Cumulative Incidence of Hypertension by 55 Years
555 of Age in Blacks and Whites: The CARDIA Study. *Journal of the American Heart*
556 *Association*. 2018;7:e007988. doi: 10.1161/jaha.117.007988
- 557 6. Barber S, Hickson DA, Kawachi I, Subramanian SV, Earls F. Neighborhood
558 Disadvantage and Cumulative Biological Risk Among a Socioeconomically
559 Diverse Sample of African American Adults: An Examination in the Jackson
560 Heart Study. *J Racial Ethn Health Disparities*. 2016;3:444-456. doi:
561 10.1007/s40615-015-0157-0

- 562 7. Pickett KE, Pearl M. Multilevel analyses of neighbourhood socioeconomic
563 context and health outcomes: a critical review. *J Epidemiol Community Health*.
564 2001;55:111-122. doi: 10.1136/jech.55.2.111
- 565 8. Grosicki GJ, Bunsawat K, Jeong S, Robinson AT. Racial and ethnic disparities in
566 cardiometabolic disease and COVID-19 outcomes in White, Black/African
567 American, and Latinx populations: Social determinants of health. *Prog*
568 *Cardiovasc Dis*. 2022;71:4-10. doi: 10.1016/j.pcad.2022.04.004
- 569 9. Sampson RJ, Raudenbush SW, Earls F. Neighborhoods and violent crime: a
570 multilevel study of collective efficacy. *Science*. 1997;277:918-924. doi:
571 10.1126/science.277.5328.918
- 572 10. Kuipers MA, van Poppel MN, van den Brink W, Wingen M, Kunst AE. The
573 association between neighborhood disorder, social cohesion and hazardous
574 alcohol use: a national multilevel study. *Drug Alcohol Depend*. 2012;126:27-34.
575 doi: 10.1016/j.drugalcdep.2012.04.008
- 576 11. Jones SA, Moore LV, Moore K, Zagorski M, Brines SJ, Diez Roux AV, Evenson
577 KR. Disparities in physical activity resource availability in six US regions.
578 *Preventive Medicine*. 2015;78:17-22. doi: 10.1016/j.ypmed.2015.05.028
- 579 12. Bower KM, Thorpe RJ, Rohde C, Gaskin DJ. The intersection of neighborhood
580 racial segregation, poverty, and urbanicity and its impact on food store availability
581 in the United States. *Preventive Medicine*. 2014;58:33-39. doi:
582 10.1016/j.ypmed.2013.10.010
- 583 13. Barone Gibbs B, Hivert M-F, Jerome GJ, Kraus WE, Rosenkranz SK, Schorr EN,
584 Spartano NL, Lobelo F. Physical Activity as a Critical Component of First-Line

- 585 Treatment for Elevated Blood Pressure or Cholesterol: Who, What, and How?: A
586 Scientific Statement From the American Heart Association. *Hypertension*.
587 2021;78. doi: 10.1161/hyp.000000000000196
- 588 14. Ndanuko RN, Tapsell LC, Charlton KE, Neale EP, Batterham MJ. Dietary
589 Patterns and Blood Pressure in Adults: A Systematic Review and Meta-Analysis
590 of Randomized Controlled Trials. *Adv Nutr*. 2016;7:76-89. doi:
591 10.3945/an.115.009753
- 592 15. Fuller-Rowell TE, Nichols OI, Robinson AT, Boylan JM, Chae DH, El-Sheikh M.
593 Racial disparities in sleep health between Black and White young adults: The
594 role of neighborhood safety in childhood. *Sleep Med*. 2021;81:341-349. doi:
595 10.1016/j.sleep.2021.03.007
- 596 16. O'Brien E. Twenty-four-hour ambulatory blood pressure measurement in clinical
597 practice and research: a critical review of a technique in need of implementation.
598 *Journal of Internal Medicine*. 2011;269:478-495. doi: 10.1111/j.1365-
599 2796.2011.02356.x
- 600 17. Muntner P, Shimbo D, Carey RM, Charleston JB, Gaillard T, Misra S, Myers MG,
601 Ogedegbe G, Schwartz JE, Townsend RR, et al. Measurement of Blood
602 Pressure in Humans: A Scientific Statement From the American Heart
603 Association. *Hypertension*. 2019;73. doi: 10.1161/hyp.0000000000000087
- 604 18. Ohkubo T, Hozawa A, Yamaguchi J, Kikuya M, Ohmori K, Michimata M,
605 Matsubara M, Hashimoto J, Hoshi H, Araki T, et al. Prognostic significance of the
606 nocturnal decline in blood pressure in individuals with and without high 24-h

- 607 blood pressure: the Ohasama study. *J Hypertens*. 2002;20:2183-2189. doi:
608 10.1097/00004872-200211000-00017
- 609 19. Staplin N, De La Sierra A, Ruilope LM, Emberson JR, Vinyoles E, Gorostidi M,
610 Ruiz-Hurtado G, Segura J, Baigent C, Williams B. Relationship between clinic
611 and ambulatory blood pressure and mortality: an observational cohort study in
612 59 124 patients. *The Lancet*. 2023. doi: 10.1016/s0140-6736(23)00733-x
- 613 20. Krzych ŁJ, Bochenek A. Blood pressure variability: Epidemiological and clinical
614 issues. *Cardiology Journal*. 2013;20. doi: 10.5603/cj.2013.0022
- 615 21. Staessen JA. Predicting Cardiovascular Risk Using Conventional vs Ambulatory
616 Blood Pressure in Older Patients With Systolic Hypertension. *JAMA*.
617 1999;282:539. doi: 10.1001/jama.282.6.539
- 618 22. Booth JN, Diaz KM, Seals SR, Sims M, Ravenell J, Muntner P, Shimbo D.
619 Masked Hypertension and Cardiovascular Disease Events in a Prospective
620 Cohort of Blacks. *Hypertension*. 2016;68:501-510. doi:
621 10.1161/hypertensionaha.116.07553
- 622 23. Hanevold CD. Racial-ethnic disparities in childhood hypertension. *Pediatric*
623 *Nephrology*. 2023;38:619-623. doi: 10.1007/s00467-022-05707-x
- 624 24. Nichols OI, Fuller-Rowell TE, Robinson AT, Eugene D, Homandberg LK.
625 Neighborhood Socioeconomic Deprivation in Early Childhood Mediates Racial
626 Disparities in Blood Pressure in a College Student Sample. *Journal of Youth and*
627 *Adolescence*. 2022;51:2146-2160. doi: 10.1007/s10964-022-01658-6
- 628 25. Grosicki GJ, Flatt AA, Cross BL, Vondrasek JD, Blumenburg WT, Lincoln ZR,
629 Chall A, Bryan A, Patel RP, Ricart K, et al. Acute beetroot juice reduces blood

- 630 pressure in young Black and White males but not females. *Redox Biol.*
631 2023;63:102718. doi: 10.1016/j.redox.2023.102718
- 632 26. Robinson AT, Linder BA, Barnett AM, Jeong S, Sanchez SO, Nichols OI,
633 McIntosh MC, Hutchison ZJ, Tharpe MA, Watso JC, et al. Cross-sectional
634 analysis of racial differences in hydration and neighborhood deprivation in young
635 adults. *Am J Clin Nutr.* 2023. doi: 10.1016/j.ajcnut.2023.08.005
- 636 27. Wenner MM, Paul EP, Robinson AT, Rose WC, Farquhar WB. Acute NaCl
637 Loading Reveals a Higher Blood Pressure for a Given Serum Sodium Level in
638 African American Compared to Caucasian Adults. *Front Physiol.* 2018;9:1354.
639 doi: 10.3389/fphys.2018.01354
- 640 28. Atlas SA. The Renin-Angiotensin Aldosterone System: Pathophysiological Role
641 and Pharmacologic Inhibition. *Journal of Managed Care Pharmacy.* 2007;13:9-
642 20. doi: 10.18553/jmcp.2007.13.s8-b.9
- 643 29. Hu JR, Sahni S, Mukamal KJ, Millar CL, Wu Y, Appel LJ, Juraschek SP. Dietary
644 Sodium Intake and Sodium Density in the United States: Estimates From
645 NHANES 2005-2006 and 2015-2016. *Am J Hypertens.* 2020;33:825-830. doi:
646 10.1093/ajh/hpaa104
- 647 30. Dhaun N, Goddard J, Kohan DE, Pollock DM, Schiffrin EL, Webb DJ. Role of
648 Endothelin-1 in Clinical Hypertension. *Hypertension.* 2008;52:452-459. doi:
649 10.1161/hypertensionaha.108.117366
- 650 31. Mathur S, Pollock JS, Mathur S, Harshfield GA, Pollock DM. Relation of urinary
651 endothelin-1 to stress-induced pressure natriuresis in healthy adolescents.

- 652 *Journal of the American Society of Hypertension*. 2018;12:34-41. doi:
653 <https://doi.org/10.1016/j.jash.2017.11.005>
- 654 32. Boesen EI. Endothelin receptors, renal effects and blood pressure. *Current*
655 *Opinion in Pharmacology*. 2015;21:25-34. doi:
656 <https://doi.org/10.1016/j.coph.2014.12.007>
- 657 33. Wolf ST, Jablonski NG, Ferguson SB, Alexander LM, Kenney WL. Four weeks of
658 vitamin D supplementation improves nitric oxide-mediated microvascular function
659 in college-aged African Americans. *Am J Physiol Heart Circ Physiol*.
660 2020;319:H906-h914. doi: 10.1152/ajpheart.00631.2020
- 661 34. Nguyen AW, Taylor HO, Keith VM, Qin W, Mitchell UA. Discrimination and social
662 isolation among African Americans: The moderating role of skin tone. *Cultur*
663 *Divers Ethnic Minor Psychol*. 2022. doi: 10.1037/cdp0000569
- 664 35. Burch T. Skin color and the criminal justice system: Beyond black-white
665 disparities in sentencing. *Journal of Empirical Legal Studies*. 2015;12:395-420.
- 666 36. Bromfield SG, Booth JN, Loop MS, Schwartz JE, Seals SR, Thomas SJ, Min Y-I,
667 Ogedegbe G, Shimbo D, Muntner P. Evaluating different criteria for defining a
668 complete ambulatory blood pressure monitoring recording. *Blood Pressure*
669 *Monitoring*. 2018;23:103-111. doi: 10.1097/mbp.0000000000000309
- 670 37. Migdal KU, Babcock MC, Robinson AT, Watso JC, Wenner MM, Stocker SD,
671 Farquhar WB. The Impact of High Dietary Sodium Consumption on Blood
672 Pressure Variability in Healthy, Young Adults. *Am J Hypertens*. 2020. doi:
673 10.1093/ajh/hpaa014

- 674 38. Fagard RH, Thijs L, Staessen JA, Clement DL, De Buyzere ML, De Bacquer DA.
675 Night–day blood pressure ratio and dipping pattern as predictors of death and
676 cardiovascular events in hypertension. *Journal of Human Hypertension*.
677 2009;23:645-653. doi: 10.1038/jhh.2009.9
- 678 39. McGonagle K, Freedman VA. The Panel Study of Income Dynamics' Childhood
679 Retrospective Circumstances Study (PSID-CRCS) User Guide: Final Release 1.
680 In: Online: Institute for Social Research; 2015.
- 681 40. Kind AJH, Jencks S, Brock J, Yu M, Bartels C, Ehlenbach W, Greenberg C,
682 Smith M. Neighborhood Socioeconomic Disadvantage and 30-Day
683 Rehospitalization. *Annals of Internal Medicine*. 2014;161:765. doi: 10.7326/m13-
684 2946
- 685 41. Knighton AJ, Savitz L, Belnap T, Stephenson B, Vanderslice J. Introduction of an
686 Area Deprivation Index Measuring Patient Socio-economic Status
687 in an Integrated Health System: Implications for Population Health. *eGEMs*
688 (*Generating Evidence & Methods to improve patient outcomes*). 2016;4:9. doi:
689 10.13063/2327-9214.1238
- 690 42. Karaca A, Demirci N, Yılmaz V, Hazır Aytar S, Can S, Ünver E. Validation of the
691 ActiGraph wGT3X-BT Accelerometer for Step Counts at Five Different Body
692 Locations in Laboratory Settings. *Measurement in Physical Education and*
693 *Exercise Science*. 2022;26:63-72. doi: 10.1080/1091367x.2021.1948414
- 694 43. Watso JC, Robinson AT, Babcock MC, Migdal KU, Witman MAH, Wenner MM,
695 Stocker SD, Farquhar WB. Short-term water deprivation attenuates the exercise

- 696 pressor reflex in older female adults. *Physiological Reports*. 2020;8. doi:
697 10.14814/phy2.14581
- 698 44. Harnack LJ, Cogswell ME, Shikany JM, Gardner CD, Gillespie C, Loria CM, Zhou
699 X, Yuan K, Steffen LM. Sources of Sodium in US Adults From 3 Geographic
700 Regions. *Circulation*. 2017;135:1775-1783. doi:
701 10.1161/circulationaha.116.024446
- 702 45. Lakens D. Calculating and reporting effect sizes to facilitate cumulative science:
703 a practical primer for t-tests and ANOVAs. *Front Psychol*. 2013;4:863. doi:
704 10.3389/fpsyg.2013.00863
- 705 46. Kerby DS. The Simple Difference Formula: An Approach to Teaching
706 Nonparametric Correlation. *Comprehensive Psychology*. 2014;3:11.IT.13.11. doi:
707 10.2466/11.it.3.1
- 708 47. Profant J, Dimsdale JE. Race and Diurnal Blood Pressure Patterns.
709 *Hypertension*. 1999;33:1099-1104. doi: 10.1161/01.hyp.33.5.1099
- 710 48. Yano Y, Reis JP, Tedla YG, Goff DC, Jacobs DR, Sidney S, Ning H, Liu K,
711 Greenland P, Lloyd-Jones DM. Racial Differences in Associations of Blood
712 Pressure Components in Young Adulthood With Incident Cardiovascular Disease
713 by Middle Age. *JAMA Cardiology*. 2017;2:381. doi:
714 10.1001/jamacardio.2016.5678
- 715 49. Chase HP, Garg SK, Icaza G, Carmain JA, Walravens CF, Marshall G. 24-h
716 ambulatory blood pressure monitoring in healthy young adult Anglo, Hispanic,
717 and African-American subjects. *Am J Hypertens*. 1997;10:18-23. doi:
718 10.1016/s0895-7061(96)00260-9

- 719 50. Harshfield GA, Pulliam DA, Somes GW, Alpert BS. Ambulatory blood pressure
720 patterns in youth. *Am J Hypertens*. 1993;6:968-973. doi: 10.1093/ajh/6.11.968
- 721 51. Harshfield GA, Alpert BS, Willey ES, Somes GW, Murphy JK, Dupaul LM. Race
722 and gender influence ambulatory blood pressure patterns of adolescents.
723 *Hypertension*. 1989;14:598-603. doi: 10.1161/01.hyp.14.6.598
- 724 52. Muntner P, Lewis CE, Diaz KM, Carson AP, Kim Y, Calhoun D, Yano Y, Viera
725 AJ, Shimbo D. Racial Differences in Abnormal Ambulatory Blood Pressure
726 Monitoring Measures: Results From the Coronary Artery Risk Development in
727 Young Adults (CARDIA) Study. *American Journal of Hypertension*. 2015;28:640-
728 648. doi: 10.1093/ajh/hpu193
- 729 53. Wang X, Poole JC, Treiber FA, Harshfield GA, Hanevold CD, Snieder H. Ethnic
730 and Gender Differences in Ambulatory Blood Pressure Trajectories. *Circulation*.
731 2006;114:2780-2787. doi: 10.1161/circulationaha.106.643940
- 732 54. Belsha C, Spencer H, Berry P, Plummer J, Wells T. Diurnal blood pressure
733 patterns in normotensive and hypertensive children and adolescents. *Journal of*
734 *Human Hypertension*. 1997;11:801-806. doi: 10.1038/sj.jhh.1000553
- 735 55. Falkner B, Lurbe E. Primordial Prevention of High Blood Pressure in Childhood.
736 *Hypertension*. 2020;75:1142-1150. doi: 10.1161/hypertensionaha.119.14059
- 737 56. Firebaugh G, Acciai F. For blacks in America, the gap in neighborhood poverty
738 has declined faster than segregation. *Proceedings of the National Academy of*
739 *Sciences*. 2016;113:13372-13377. doi: 10.1073/pnas.1607220113
- 740 57. Mayne SL, Moore KA, Powell-Wiley TM, Evenson KR, Block R, Kershaw KN.
741 Longitudinal Associations of Neighborhood Crime and Perceived Safety With

- 742 Blood Pressure: The Multi-Ethnic Study of Atherosclerosis (MESA). *Am J*
743 *Hypertens.* 2018;31:1024-1032. doi: 10.1093/ajh/hpy066
- 744 58. Mujahid MS, Gao X, Tabb LP, Morris C, Lewis TT. Historical redlining and
745 cardiovascular health: The Multi-Ethnic Study of Atherosclerosis. *Proceedings of*
746 *the National Academy of Sciences.* 2021;118:e2110986118. doi:
747 10.1073/pnas.2110986118
- 748 59. Kershaw KN, Robinson WR, Gordon-Larsen P, Hicken MT, Goff DC, Carnethon
749 MR, Kiefe CI, Sidney S, Diez Roux AV. Association of Changes in
750 Neighborhood-Level Racial Residential Segregation With Changes in Blood
751 Pressure Among Black Adults. *JAMA Internal Medicine.* 2017;177:996. doi:
752 10.1001/jamainternmed.2017.1226
- 753 60. Snyder-Mackler N, Burger JR, Gaydos L, Belsky DW, Noppert GA, Campos FA,
754 Bartolomucci A, Yang YC, Aiello AE, O'Rand A, et al. Social determinants of
755 health and survival in humans and other animals. *Science.* 2020;368. doi:
756 10.1126/science.aax9553
- 757 61. Merkin SS, Basurto-Dávila R, Karlamangla A, Bird CE, Lurie N, Escarce J,
758 Seeman T. Neighborhoods and cumulative biological risk profiles by
759 race/ethnicity in a national sample of U.S. adults: NHANES III. *Ann Epidemiol.*
760 2009;19:194-201. doi: 10.1016/j.annepidem.2008.12.006
- 761 62. Pretty C, O'Leary DD, Cairney J, Wade TJ. Adverse childhood experiences and
762 the cardiovascular health of children: a cross-sectional study. *BMC Pediatrics.*
763 2013;13:208. doi: 10.1186/1471-2431-13-208

- 764 63. Saffer H, Dave D, Grossman M, Ann Leung L. Racial, Ethnic, and Gender
765 Differences in Physical Activity. *Journal of Human Capital*. 2013;7:378-410. doi:
766 10.1086/671200
- 767 64. Kell KP, Judd SE, Pearson KE, Shikany JM, Fernández JR. Associations
768 between socio-economic status and dietary patterns in US black and white
769 adults. *British Journal of Nutrition*. 2015;113:1792-1799. doi:
770 10.1017/s0007114515000938
- 771 65. Garcia MT, Sato PM, Trude ACB, Eckmann T, Steeves ETA, Hurley KM, Bógus
772 CM, Gittelsohn J. Factors Associated with Home Meal Preparation and Fast-
773 Food Sources Use among Low-Income Urban African American Adults. *Ecology
774 of Food and Nutrition*. 2018;57:13-31. doi: 10.1080/03670244.2017.1406853
- 775 66. Appel LJ, Moore TJ, Obarzanek E, Vollmer WM, Svetkey LP, Sacks FM, Bray
776 GA, Vogt TM, Cutler JA, Windhauser MM, et al. A Clinical Trial of the Effects of
777 Dietary Patterns on Blood Pressure. *New England Journal of Medicine*.
778 1997;336:1117-1124. doi: 10.1056/nejm199704173361601
- 779 67. Gohar EY, De Miguel C, Obi IE, Daugherty EM, Hyndman KA, Becker BK, Jin C,
780 Sedaka R, Johnston JG, Liu P, et al. Acclimation to a High-Salt Diet Is Sex
781 Dependent. *Journal of the American Heart Association*. 2022;11. doi:
782 10.1161/jaha.120.020450
- 783 68. Jackson RW, Treiber FA, Harshfield GA, Waller JL, Pollock JS, Pollock DM.
784 Urinary excretion of vasoactive factors are correlated to sodium excretion. *Am J
785 Hypertens*. 2001;14:1003-1006. doi: 10.1016/s0895-7061(01)02169-0

- 786 69. Hwang YS, Hsieh TJ, Lee YJ, Tsai JH. Circadian rhythm of urinary endothelin-1
787 excretion in mild hypertensive patients. *Am J Hypertens*. 1998;11:1344-1351.
788 doi: 10.1016/s0895-7061(98)00170-8
- 789 70. Chrysant SG, Danisa K, Kem DC, Dillard BL, Smith WJ, Frohlich ED. Racial
790 differences in pressure, volume and renin interrelationships in essential
791 hypertension. *Hypertension*. 1979;1:136-141. doi: 10.1161/01.hyp.1.2.136
- 792 71. Rifkin DE, Khaki AR, Jenny NS, McClelland RL, Budoff M, Watson K, Ix JH,
793 Allison MA. Association of renin and aldosterone with ethnicity and blood
794 pressure: the Multi-Ethnic Study of Atherosclerosis. *Am J Hypertens*.
795 2014;27:801-810. doi: 10.1093/ajh/hpt276
- 796 72. Stanhewicz AE, Wong BJ. Counterpoint: Investigators should not control for
797 menstrual cycle phase when performing studies of vascular control that include
798 women. *J Appl Physiol (1985)*. 2020;129:1117-1119. doi:
799 10.1152/jappphysiol.00427.2020
- 800 73. Williamson PM, Buddle ML, Brown MA, Whitworth JA. Ambulatory blood
801 pressure monitoring (ABPM) in the normal menstrual cycle and in women using
802 oral contraceptives. Comparison with conventional blood pressure measurement.
803 *Am J Hypertens*. 1996;9:953-958. doi: 10.1016/0895-7061(96)00150-1
804
805
806
807

808 **Table 1. Race comparison of participant characteristics and biochemical markers.**

809 Data reported in mean \pm SD (normal distribution) or median (IQR) (non-normal
 810 distribution). Independent samples *t*-test was conducted for normally distributed data with
 811 Cohen’s *d* effect size. Mann-Whitney *U* test was conducted for non-normally distributed
 812 data with rank biserial correlation effect size. A Fisher’s exact test was conducted to
 813 compare distribution of biological sex between Black and White cohorts. *Significance
 814 was set to $p \leq 0.05$ for all statistical analyses.

Variables	Black participants (n=21)	White participants (n=26)	<i>p</i> value	Effect size
Participant characteristics				
Age, years	21 (1)	21 (1)	0.429	0.12
Sex	7 M / 14 F	13 M / 13F	0.260	0.17
Height, m	1.66 \pm 0.08	1.73 \pm 0.11	0.026*	-
Mass, kg	72.2 \pm 10.5	74.8 \pm 13.4	0.485	0.21
Body mass index, kg/m ²	26.1 \pm 4.2	24.7 \pm 3.7	0.225	0.36
Systolic blood pressure, mmHg	120 \pm 11	117 \pm 9	0.399	0.29
Diastolic blood pressure, mmHg	72 \pm 11	68.0 \pm 7	0.138	0.51
Waist-to-hip ratio	0.81 \pm 0.04	0.82 \pm 0.06	0.692	0.13
Melanin index	54 \pm 10	28 \pm 4	< 0.001*	3.45
Blood biomarkers				
Glucose, mg/dl	81 (10)	87 (11)	0.111	0.29
Triglycerides, mg/dl	46(20)	62 (39)	0.123	0.28
Cholesterol, mg/dl	153 \pm 32	168 \pm 30	0.138	0.48
Low-density lipoprotein, mg/dl	100 \pm 27	95 \pm 32	0.732	0.14
High-density lipoprotein, mg/dl	55 \pm 15	56 \pm 15	0.888	0.04
Aldosterone, ng/dl	9.25 (5.61)	14.21 (11.63)	0.017*	0.44
Plasma renin activity, ng/ml/hr	0.50 (0.60)	0.90 (1.05)	0.118	0.29
Urinary biomarkers				
Endothelin-1 excretion, pg/min	0.24 (0.26)	0.27 (0.44)	0.592	0.10

815

816

817 **Table 2. Race comparison of social determinants of health, health behaviors, and**
 818 **dietary intake.** Data reported in mean ± SD (normal distribution) or median (IQR) (non-
 819 normal distribution). Independent samples *t*-test was conducted for normally distributed
 820 data with Cohen’s *d* effect size. Mann-Whitney *U* test was conducted for non-normally
 821 distributed data with rank biserial correlation effect size. Abbreviations include: area
 822 deprivation index (ADI), adverse childhood experiences (ACEs), and moderate to
 823 vigorous physical activity (MVPA). *Significance was set to $p \leq 0.05$ for all statistical
 824 analyses.

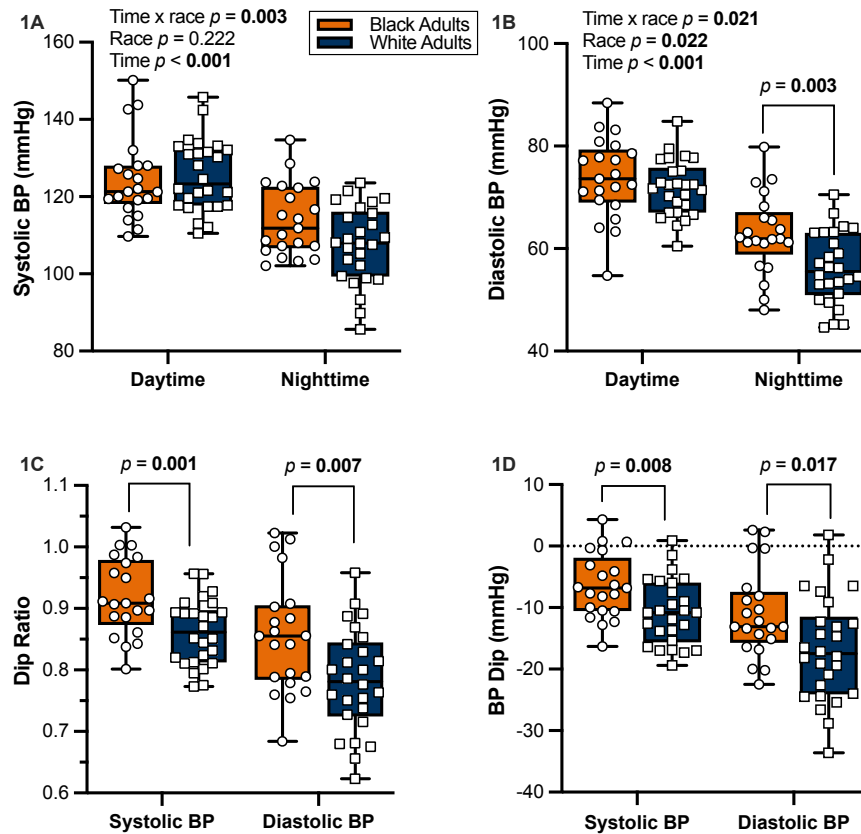
Variables	Black participants (n=21)	White participants (n=26)	<i>p</i> value	Effect size
Social determinants				
ADI Early Childhood	109 (20)	97 (18)	0.003*	0.49
ADI Middle Childhood	107 (12)	95 (25)	0.012*	0.42
ADI Adolescence	109 (12)	96 (25)	0.018*	0.41
ADI Cumulative	110 (8)	97 (21)	< 0.001*	0.56
Income:needs	3.53 ± 1.64	5.30 ± 2.75	0.014*	0.77
Perceived discrimination	1.84 (1.17)	1.56 (1.39)	0.329	0.18
ACEs	4.0 (3.0)	2.0 (3.0)	0.028*	0.37
Health behaviors				
MVPA, minutes	26.8 ± 25.2	44.6 ± 16.9	0.008*	0.82
Steps, per day	4733 (2987)	5801 (2512)	0.067	0.32
Sedentary time, hours	8.3 (3.6)	8.8 (2.2)	0.734	0.06
Sleep duration, hours	6.74 ± 0.97	7.43 ± 0.98	0.024*	0.71
Sleep efficiency, %	80.44 ± 7.44	85.23 ± 4.82	0.013*	0.79
Dietary intake				
Energy, kcal	1822 (509)	2014 (457)	0.070	0.31
Total fat, g	83 ± 27	89 ± 30	0.439	0.23
Total carbohydrate, g	215 (30)	233 (66)	0.236	0.21
Total protein, g	74 ± 25	84 ± 22	0.127	0.46
Total fiber, g	11 (6)	18 (7)	0.001*	0.55
Soluble fiber, g	4 ± 1	6 ± 2	0.012*	0.78
Insoluble fiber, g	7 (5)	13 (5)	0.002*	0.53
Calcium, mg	652 (284)	912 (390)	0.014*	0.42
Magnesium, mg	223 (73)	283 (99)	< 0.001*	0.13
Sodium, mg	3497 ± 1041	3697 ± 859	0.480	0.46
Potassium, mg	1942 (939)	2444 (672)	0.042*	0.17
Sodium:Potassium	1.8 ± 0.5	1.6 ± 0.3	0.095	0.27

826 **Table 3. The associations between nighttime systolic and diastolic blood pressure**
 827 **and dip ratios with social determinants of health, health behaviors, and dietary**
 828 **intake.** Pearson’s *r* and Spearman’s *rho* correlations reported (n=47). Abbreviations
 829 include: adverse childhood experiences (ACEs), diastolic blood pressure (DBP),
 830 moderate to vigorous physical activity (MVPA), and systolic blood pressure (SBP).
 831 *Significance was set to $p \leq 0.05$ for all statistical analyses.

832 Variables	Nighttime SBP, <i>r</i> / <i>rho</i> (<i>p</i>)	Nighttime DBP, <i>r</i> / <i>rho</i> (<i>p</i>)	SBP dip ratio, <i>r</i> / <i>rho</i> (<i>p</i>)	DBP dip ratio, <i>r</i> / <i>rho</i> (<i>p</i>)
Social determinants				
Income:needs	-0.003 (0.986)	-0.196 (0.203)	-0.129 (0.403)	-0.118 (0.445)
Perceived discrimination	0.032 (0.842)	0.317 (0.044)*	0.112 (0.487)	0.187 (0.242)
ACEs	0.133 (0.372)	0.183 (0.219)	0.233 (0.114)	0.142 (0.341)
Health behaviors				
MVPA, minutes	-0.130 (0.390)	-0.065 (0.667)	-0.201 (0.180)	-0.118 (0.436)
Steps, per day	-0.064 (0.672)	0.002 (0.991)	-0.106 (0.483)	-0.054 (0.722)
Sedentary time, hours	0.045 (0.764)	0.056 (0.709)	-0.228 (0.128)	-0.148 (0.328)
Sleep duration, hours	-0.083 (0.567)	-0.064 (0.679)	-0.143 (0.354)	-0.153 (0.322)
Sleep efficiency, %	-0.087 (0.575)	0.018 (0.906)	-0.203 (0.186)	-0.124 (0.424)
Dietary intake				
Energy, kcal	0.101 (0.511)	-0.054 (0.723)	-0.021 (0.891)	0.107 (0.486)
Total fat, g	-0.004 (0.977)	-0.032 (0.836)	-0.024 (0.874)	0.127 (0.405)
Total carbohydrate, g	0.005 (0.975)	-0.181 (0.235)	-0.042 (0.783)	-0.123 (0.936)
Total protein, g	-0.045 (0.771)	-0.154 (0.313)	0.0155 (0.920)	0.093 (0.542)
Total fiber, g	-0.195 (0.198)	-0.149 (0.328)	-0.273 (0.069)	-0.162 (0.288)
Soluble fiber, g	-0.205 (0.176)	-0.164 (0.281)	-0.250 (0.097)	-0.139 (0.363)
Insoluble fiber, g	-0.184 (0.227)	-0.118 (0.440)	-0.252 (0.094)	-0.152 (0.320)
Calcium, mg	0.079 (0.605)	0.028 (0.859)	-0.015 (0.922)	0.117 (0.445)
Magnesium, mg	0.146 (0.338)	0.058 (0.704)	0.085 (0.578)	0.141 (0.355)
Sodium, mg	-0.116 (0.449)	-0.105 (0.492)	-0.123 (0.421)	0.017 (0.909)
Potassium, mg	-0.014 (0.926)	0.048 (0.756)	0.055 (0.719)	0.144 (0.346)
Sodium:Potassium	0.008 (0.961)	0.043 (0.780)	-0.084 (0.585)	0.139 (0.362)

833 **Table 4. Multiple regression models on correlates of nighttime systolic BP.** Regression adjusted for race (**model**
834 **1**); adjusted for race, BMI, age, and sex (**model 2**), race, BMI, age, sex, and social determinants of health (**model 3**);
835 race, BMI, age, sex, social determinants of health, and health behaviors (**model 4**). Standardized estimates (β) and
836 95% confidence intervals (95% CI) reported. Abbreviations include: body mass index (BMI), area deprivation index
837 (ADI), adverse childhood experiences (ACEs), and moderate to vigorous physical activity (MVPA). Significance was
838 set to $p \leq 0.05$ for all statistical analyses.

Variables	Model 1			Model 2			Model 3			Model 4		
	β	95% CI	<i>p</i> value	β	95% CI	<i>p</i> value	β	95% CI	<i>p</i> value	β	95% CI	<i>p</i> value
Race	0.545	[-0.116, 1.207]	0.103	0.876	[0.294, 1.458]	0.004	0.711	[-0.043, 1.465]	0.063	1.180	[0.288, 2.071]	0.012
Age, years				-0.125	[-0.400, 0.157]	0.380	-0.127	[-0.440, 0.185]	0.410	-0.214	[-0.539, 0.111]	0.186
Sex				-0.599	[-0.888, -0.311]	<0.001	-0.597	[-0.914, -0.281]	<0.001	-0.747	[-1.115, -0.379]	<0.001
BMI, kg/m ²				0.086	[-0.196, 0.369]	0.538	0.123	[-0.176, 0.423]	0.406	0.196	[-0.131, 0.523]	0.228
ADI Cumulative							0.062	[-0.380, 0.503]	0.777	0.033	[-0.476, 0.542]	0.893
ACEs							0.194	[-0.157, 0.545]	0.267	0.250	[-0.203, 0.703]	0.265
Perceived discrimination							0.031	[-0.329, 0.390]	0.862	0.033	[-0.384, 0.450]	0.872
Income:needs							0.056	[-0.328, 0.441]	0.767	0.153	[-0.262, 0.568]	0.452
MVPA, minutes										-0.019	[-0.486, 0.447]	0.932
Sedentary time, hours										0.333	[-0.114, 0.781]	0.137
Sleep duration, hours										0.173	[-0.249, 0.594]	0.406
Sleep efficiency, %										0.208	[-0.140, 0.555]	0.229
Adjusted R ² , %		4.91%			36.13%			31.94%			34.08%	
<i>p</i> value		0.103			0.001			0.014			0.028	



839

840 **Figure 1. Race comparison of ambulatory blood pressure and dip ratios.** Black

841 participants (n=21) compared with White participants (n=26) for **(A)** daytime systolic

842 BP (124 ± 9 mmHg vs 125 ± 11 mmHg) and nighttime (114 ± 9 mmHg vs 108 ± 10

843 mmHg); **(B)** daytime diastolic BP (74 ± 8 mmHg vs 72 ± 5 mmHg) and nighttime (63

844 ± 8 mmHg vs 58 ± 7 mmHg); **(C)** night-to-day systolic BP dip ratio (0.92 ± 0.06 vs

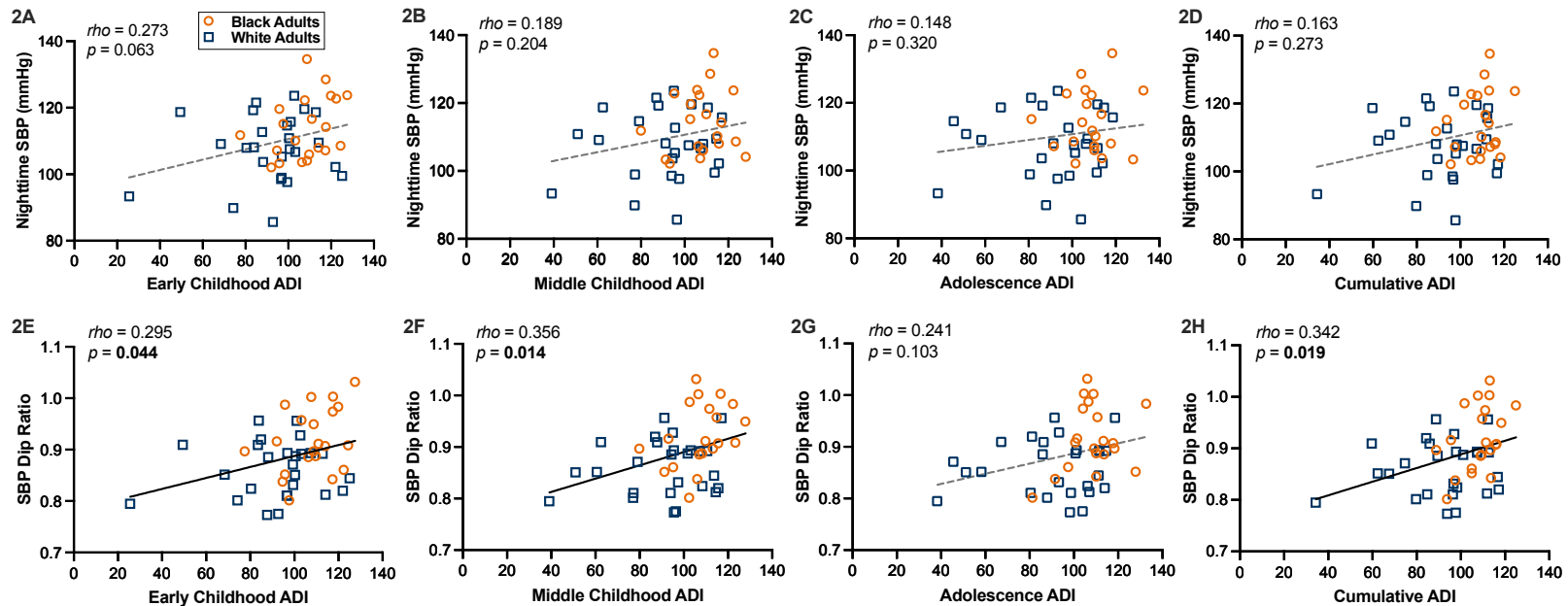
845 0.86 ± 0.05) and diastolic BP dip ratio (0.86 ± 0.09 vs 0.78 ± 0.08); and **(D)** absolute

846 nighttime systolic BP dipping (6.4 ± 5.3 vs 10.7 ± 5.3 mmHg) and diastolic BP

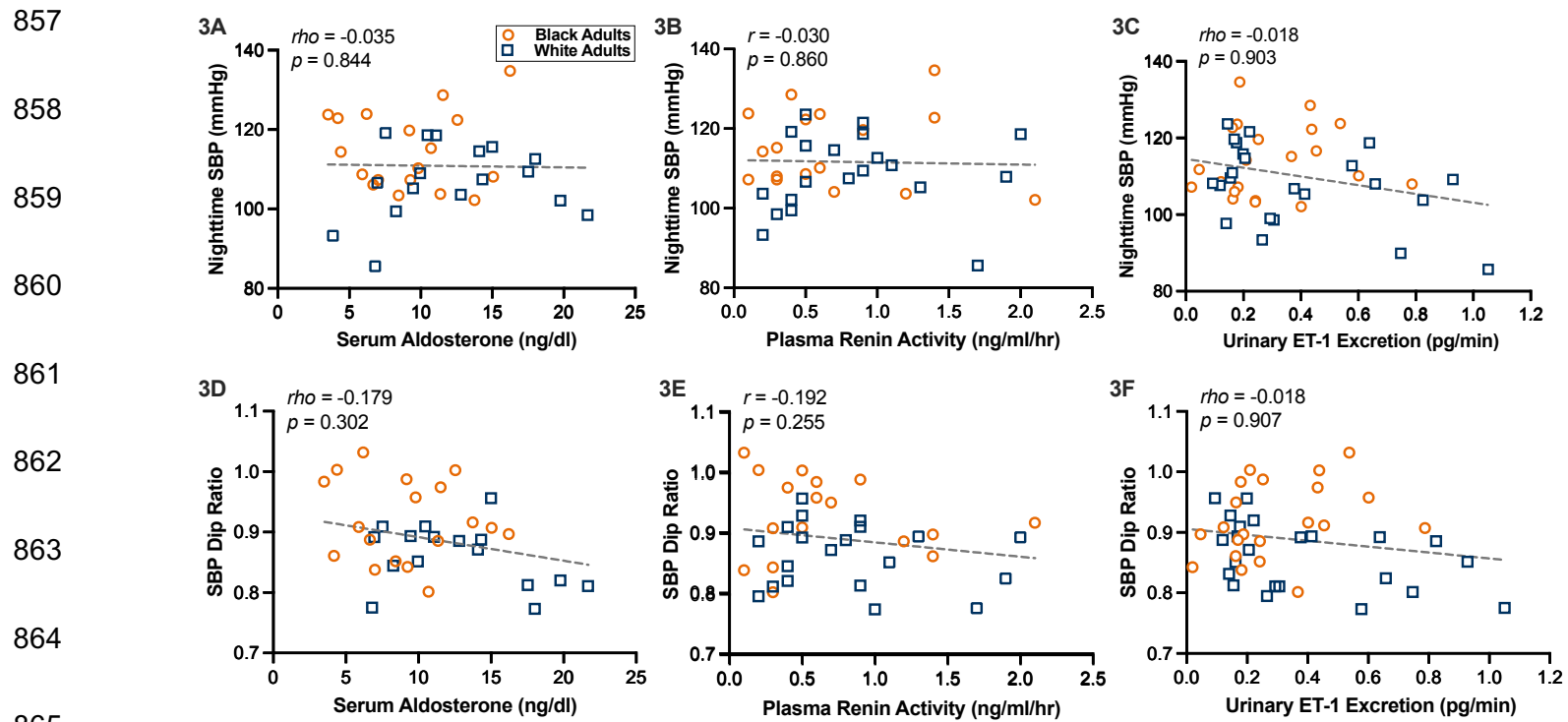
847 dipping (11.0 ± 7.2 vs 16.8 ± 8.5 mmHg). Mixed-effects model with Sidak's multiple

848 comparisons tests reported for A & B. Unpaired *t*-tests reported for C & D.

849 Significance was set to $p \leq 0.05$ for all statistical analyses.



850 **Figure 2. The associations between area deprivation index and nighttime systolic blood pressure.** Spearman's
 851 *rho* correlations in Black participants (n=21) and White participants (n=26) between nighttime systolic BP and ADI
 852 during **(A)** early childhood; **(B)** middle childhood; **(C)** adolescence; and **(D)** cumulative reported. Spearman's *rho*
 853 correlations between systolic BP dip ratio and ADI during **(E)** early childhood; **(F)** middle childhood; **(G)** adolescence;
 854 and **(H)** cumulative reported. Abbreviations include: area deprivation index (ADI) and systolic blood pressure (SBP).
 855 Orange dots represent Black participants and blue squares represent White participants. Solid lines represent
 856 significant regressions. Significance was set to $p \leq 0.05$ for all statistical analyses.



866 **Figure 3. The associations between blood and urinary biomarkers and nighttime systolic blood pressure.**

867 Pearson's r and Spearman's ρ correlations in Black participants ($n \geq 17$) and White participants ($n \geq 17$) between

868 biomarkers with nighttime systolic BP and **(A)** serum aldosterone; **(B)** plasma renin activity; **(C)** urinary ET-1 excretion

869 reported. Correlations between biomarkers with systolic BP dip ratio and **(D)** serum aldosterone; **(E)** plasma renin

870 activity; **(F)** urinary ET-1 excretion reported. Abbreviations include: endothelin-1 (ET-1) and systolic blood pressure

871 (SBP). Orange dots represent Black participants and blue squares represent White participants. Significance was set
872 to $p \leq 0.05$ for all statistical analyses.

1 Supplemental Data Appendix for:

2 **Interplay of Race and Neighborhood Deprivation on Ambulatory Blood Pressure**

3 **in Young Adults**

4

5 Soolim Jeong, Braxton A. Linder, Alex M. Barnett, McKenna A. Tharpe, Zach J. Hutchison,

6 Meral N. Culver, Sofia O. Sanchez, Olivia I. Nichols, Gregory J. Grosicki, Kanokwan

7 Bunsawat, Victoria L. Nasci, Eman Y. Gohar, Thomas E. Fuller-Rowell, Austin T. Robinson

8

9 Supplemental methods: 6

10 Supplemental Tables: 7

11 Supplemental Figures: 3

12

13

14

15

16

17

18

19

20

21

22

23

24 **Supplemental Methods**

25 **Data S1. Socioeconomic status**

26 The income-to-needs ratio, defined as family income divided by the poverty threshold
27 for a given family size was used to index socioeconomic status. As previously described,¹
28 household income was measured from participant reports of estimated parent income in
29 the primary household on a scale of 1 (<\$5,000) to 32 (>\$500,000) with most intervals
30 split by \$5,000 increments (e.g., 16 = \$75,000 to \$79,999). The incomes were summed
31 where applicable to create an estimated overall household income. Household income
32 was divided by the corresponding U.S. Census poverty line based on family size to
33 translate a family's household income into an adjusted measure.

34

35 **Data S2. Perceived discrimination**

36 To assess everyday discrimination, participants answered “The Everyday
37 Discrimination Scale”, a series of survey questions regarding unfair treatment in the past
38 year for nine specified scenarios (e.g., “you receive poorer service than other people at
39 restaurants or stores” and “people act as if they are better than you”) with additional follow
40 up questions focused on perceived reasons for those unfair treatments (e.g., your race,
41 gender, etc.).² Self-report responses were assigned a numeric scale and ranged from 1
42 (never) to 5 (once a week or more).³

43

44 **Data S3. Adverse childhood experiences**

45 The number of adverse childhood experiences (**ACEs**) was measured using a 26-
46 item inventory of different types of childhood adversity. Twelve of the items are based on

47 the original and validated Adverse Childhood Experiences Questionnaire.⁴ Notably,
48 several studies have called for addition of a more inclusive and robust number of potential
49 ACEs to be considered that are associated with stress, particularly when examining
50 socioeconomically and racially diverse populations.^{5,6} Therefore, we included the
51 additional fourteen items which are based on childhood risk factors known to influence
52 health including peer rejection and community violence exposure.⁶ Each item was
53 measured by the occurrence (1 = yes, 0 = no), and summed to create a total score ranging
54 from 0-26.

55

56 **Data S4. Physical activity**

57 All devices were programmed using ActiLife software (ActiGraph Corp, Pensacola,
58 FL, USA) and were set to record data at a sampling frequency of 30 Hz. Participants were
59 also provided with an activity log to record their physical activity. On average, participants
60 reported physical activity data for 8.1 ± 0.7 days. Participants were also provided with an
61 activity log to document their physical activity and times the device was removed during
62 daytime hours. Data were collected and analyzed in 60-second epochs. Wear time was
63 assessed using the Choi algorithm⁷ and Montoye 2020 cut points were used to score
64 physical activity.⁸ Steps per day were determined using ActiGraph's default step algorithm.
65 Physical activity intensity was scored as sedentary $<2860 \text{ counts} \cdot \text{min}^{-1}$, light 2860-3940
66 $\text{counts} \cdot \text{min}^{-1}$, and moderate/vigorous (**MVPA**) were combined per developers'
67 recommendations and quantified as $\geq 3941 \text{ counts} \cdot \text{min}^{-1}$.⁸ Physical activity data scored in
68 ActiLife was exported to Microsoft Excel to cross-check wear time with self-reported logs
69 and to determine averages for step count and intensity.

70 **Data S5. Sleep**

71 Philips Respironics devices use a solid-state piezo-electric sensor with a sampling
72 rate of 32 Hz, and have been widely used and validated for sleep duration against
73 polysomnography.⁹ On average, participants reported sleep actigraphy data for 7.5 ± 1.2
74 nights. Consistent with best practices,^{10,11} rest intervals were coded through visual
75 inspection of the plotted data in Actiware software and using accelerations, self-reported
76 markers, and daily sleep diary. If the monitor was removed, participants were asked to
77 document the date and time of removal on their sleep diary. Sleep data were then visually
78 inspected and manually adjusted with consideration of self-reported sleep logs by a single
79 investigator (MNC). As previously described,^{12,13} actigraphy-derived sleep duration was
80 operationalized as total nightly sleep time, not including wake after sleep onset, as time
81 in bed and sleep duration are conceptually different outcomes. Sleep duration was
82 quantified for each night the accelerometer was worn and averaged to determine
83 participant mean values. Sleep efficiency was defined as the percent of time spent in bed
84 the participant was truly asleep.¹²

85

86 **Data S6. Dietary assessment and analysis**

87 Participants completed a three-day food and fluid record including at least two
88 weekdays and one weekend day. To help with estimating portion sizes, participants were
89 provided with a paper printout of two-dimensional food models.¹⁴ The diet record was
90 returned at the laboratory testing visit, and a trained researcher (BAL and MAT) reviewed
91 the record with the participant to obtain additional clarification. Diet records were analyzed
92 for food group and nutrient intakes using the Nutrition Data System for Research (version

93 2020, University of Minnesota, Minneapolis, MN, USA) by a registered dietitian (SOS).

94 Participants with at least two days of diet record data were included in the current

95 analyses (mean = 3.0 ± 0.3 days). We reported the average nutrient intake for all reported

96 days.

97

98

99

124 **Table S1. The associations between area deprivation index and social determinants**
 125 **of health, health behaviors, and dietary intake.**

126 Pearson's *r* and Spearman's *rho* correlations reported. Abbreviations include: area
 127 deprivation index (ADI), adverse childhood experiences (ACEs), and moderate to
 128 vigorous physical activity (MVPA). *Significance was set to $p \leq 0.05$ for all statistical
 129 analyses.
 130

ADI period	Early Childhood	Middle Childhood	Adolescence	Cumulative
Social determinants				
Income:needs	-0.588 (<0.001)	-0.461 (0.002)	-0.353 (0.019)	-0.617 (<0.001)
Perceived discrimination	0.007 (0.966)	-0.133 (0.406)	0.060 (0.713)	-0.069 (0.670)
ACEs	0.334 (0.022)	0.220 (0.138)	0.175 (0.240)	0.263 (0.074)
Health behaviors				
MVPA, minutes	-0.185 (0.218)	-0.289 (0.052)	-0.154 (0.307)	-0.218 (0.146)
Steps, per day	-0.209 (0.164)	-0.268 (0.072)	-0.086 (0.570)	-0.166 (0.268)
Sedentary time, hours	0.094 (0.532)	0.094 (0.535)	-0.038 (0.802)	-0.022 (0.885)
Sleep duration, hours	-0.106 (0.494)	-0.263 (0.084)	0.087 (0.576)	-0.122 (0.431)
Sleep efficiency, %	0.014 (0.926)	-0.014 (0.930)	0.141 (0.363)	-0.045 (0.773)
Dietary intake				
Energy, kcal	-0.094 (0.532)	0.010 (0.943)	-0.333 (0.024)	-0.163 (0.280)
Total fat, g	-0.090 (0.549)	-0.069 (0.649)	-0.400 (0.006)	-0.196 (0.192)
Total carbohydrate, g	-0.113 (0.452)	0.041 (0.787)	-0.217 (0.147)	-0.083 (0.582)
Total protein, g	-0.181 (0.227)	-0.035 (0.815)	-0.339 (0.021)	-0.189 (0.207)
Total fiber, g	-0.386 (0.008)	-0.248 (0.096)	-0.341 (0.020)	-0.413 (0.005)
Soluble fiber, g	-0.245 (0.101)	-0.107 (0.479)	-0.243 (0.104)	-0.244 (0.102)
Insoluble fiber, g	-0.387 (0.008)	-0.278 (0.062)	-0.362 (0.013)	-0.434 (0.003)
Calcium, mg	-0.038 (0.802)	0.093 (0.537)	-0.169 (0.262)	-0.052 (0.733)
Magnesium, mg	-0.032 (0.834)	0.181 (0.229)	-0.199 (0.186)	-0.004 (0.981)
Sodium, mg	-0.197 (0.188)	-0.057 (0.708)	-0.342 (0.020)	-0.227 (0.129)
Potassium, mg	0.155 (0.301)	0.072 (0.631)	-0.150 (0.320)	0.104 (0.490)
Sodium:Potassium	0.027 (0.859)	0.031 (0.836)	-0.228 (0.127)	-0.047 (0.756)

131 **Table S2. The associations between blood/urine biomarkers and social**
 132 **determinants of health, health behaviors, and dietary intake.** Pearson's *r* and
 133 Spearman's *rho* correlations reported. Abbreviations include: area deprivation index
 134 9ADI), adverse childhood experiences (ACEs), moderate to vigorous physical activity
 135 (MVPA), and endothelin-1 (ET-1). *Significance was set to $p \leq 0.05$ for all statistical
 136 analyses.

Variables	Serum Aldosterone	Plasma Renin Activity	Urinary ET-1 Excretion
Social determinants			
ADI Early Childhood	-0.148 (0.396)	-0.193 (0.253)	-0.208 (0.174)
ADI Middle Childhood	0.017 (0.925)	-0.064 (0.705)	0.063 (0.683)
ADI Adolescence	0.085 (0.628)	0.089 (0.601)	0.071 (0.645)
ADI Cumulative	-0.062 (0.723)	-0.113 (0.506)	-0.084 (0.586)
Income:needs	0.075 (0.683)	0.009 (0.961)	-0.002 (0.990)
Perceived discrimination	0.07 (0.611)	-0.207 (0.265)	-0.152 (0.369)
ACEs	0.063 (0.720)	-0.258 (0.124)	-0.095 (0.538)
Health behaviors			
MVPA, minutes	-0.136 (0.442)	-0.087 (0.615)	-0.248 (0.149)
Steps, per day	-0.206 (0.242)	-0.065 (0.705)	-0.196 (0.296)
Sedentary time, hours	-0.223 (0.204)	-0.093 (0.589)	-0.057 (0.751)
Sleep duration, hours	0.160 (0.382)	0.055 (0.755)	-0.009 (0.953)
Sleep efficiency, %	0.135 (0.459)	0.517 (0.002)	0.149 (0.352)
Dietary intake			
Energy, kcal	0.199 (0.250)	-0.026 (0.877)	-0.117 (0.454)
Total fat, g	-0.180 (0.299)	-0.059 (0.729)	-0.014 (0.939)
Total carbohydrate, g	0.191 (0.271)	0.006 (0.974)	-0.233 (0.133)
Total protein, g	0.025 (0.887)	-0.071 (0.677)	0.039 (0.802)
Total fiber, g	0.055 (0.755)	0.081 (0.635)	0.046 (0.779)
Soluble fiber, g	0.246 (0.155)	-0.109 (0.520)	-0.145 (0.353)
Insoluble fiber, g	-0.030 (0.863)	0.025 (0.882)	0.020 (0.898)
Calcium, mg	0.288 (0.094)	-0.091 (0.593)	-0.136 (0.382)
Magnesium, mg	-0.057 (0.746)	-0.364 (0.027)	-0.027 (0.885)
Sodium, mg	0.122 (0.483)	0.010 (0.955)	0.003 (0.985)
Potassium, mg	-0.058 (0.739)	-0.098 (0.563)	-0.380 (0.012)
Sodium:Potassium	-0.112 (0.520)	-0.030 (0.859)	-0.087 (0.579)

169 **Table S3. Multiple regression models on correlates of systolic BP dip ratio.**

170 Regression adjusted for race (**model 1**); adjusted for race, BMI, age, and sex (**model 2**), race, BMI, age, sex, and social
 171 determinants of health (**model 3**); race, BMI, age, sex, social determinants of health, and health behaviors (**model 4**).
 172 Standardized estimates (β) and 95% confidence intervals (95% CI) reported. Abbreviations include: body mass index (BMI),
 173 area deprivation index (ADI), adverse childhood experiences (ACEs), and moderate to vigorous physical activity (MVPA).
 174 Significance was set to $p \leq 0.05$ for all statistical analyses.

Variables	Model 1			Model 2			Model 3			Model 4		
	β	95% CI	<i>p</i> value	β	95% CI	<i>p</i> value	β	95% CI	<i>p</i> value	β	95% CI	<i>p</i> value
Race	1.051	[0.468, 1.634]	<0.001	1.229	[0.635, 1.822]	<0.001	0.868	[0.174, 1.563]	0.016	0.846	[0.028, 1.665]	0.043
Age, years				-0.241	[-0.525, 0.043]	0.093	-0.287	[-0.574, 0.001]	0.051	-0.310	[-0.608, -0.012]	0.042
Sex				-0.258	[-0.552, 0.036]	0.084	-0.212	[-0.504, 0.080]	0.147	0.062	[-0.400, 0.276]	0.707
BMI, kg/m ²				0.060	[-0.228, 0.348]	0.676	0.113	[-0.163, 0.389]	0.409	0.196	[-0.104, 0.497]	0.190
ADI Cumulative							0.313	[-0.094, 0.719]	0.126	0.165	[-0.303, 0.632]	0.473
ACEs							0.272	[-0.051, 0.596]	0.096	0.495	[0.079, 0.910]	0.022
Perceived discrimination							0.060	[-0.271, 0.391]	0.713	-0.147	[-0.529, 0.236]	0.436
Income:needs							0.285	[-0.069, 0.639]	0.111	0.244	[-0.137, 0.625]	0.198
MVPA, minutes										0.410	[-0.018, 0.838]	0.060
Sedentary time, hours										-0.171	[-0.581, 0.240]	0.400
Sleep duration, hours										-0.137	[-0.524, 0.250]	0.471
Sleep efficiency, %										-0.248	[-0.567, 0.071]	0.122
Adjusted R ² , %		26.20%			33.69%			42.23%			44.46%	
<i>p</i> value		<0.001			0.002			0.002			0.006	

175 **Table S4. Multiple regression models on correlates of nighttime diastolic BP.**

176 Regression adjusted for race (**model 1**); adjusted for race, BMI, age, and sex (**model 2**), race, BMI, age, sex, and social
 177 determinants of health (**model 3**); race, BMI, age, sex, social determinants of health, and health behaviors (**model 4**).
 178 Standardized estimates (β) and 95% confidence intervals (95% CI) reported. Abbreviations include: body mass index (BMI),
 179 area deprivation index (ADI), adverse childhood experiences (ACEs), and moderate to vigorous physical activity (MVPA).
 180 Significance was set to $p \leq 0.05$ for all statistical analyses.

Variables	Model 1			Model 2			Model 3			Model 4		
	β	95% CI	<i>p</i> value	β	95% CI	<i>p</i> value	β	95% CI	<i>p</i> value	β	95% CI	<i>p</i> value
Race	0.767	[0.132, 1.401]	0.019	0.879	[0.208, 1.550]	0.012	0.696	[-0.176, 1.568]	0.113	1.263	[0.263, 2.263]	0.016
Age, years				-0.290	[-0.611, 0.031]	0.075	-0.214	[-0.576, 0.147]	0.234	-0.317	[-0.681, 0.048]	0.085
Sex				0.026	[-0.307, 0.358]	0.876	0.002	[-0.365, 0.368]	0.993	-0.208	[-0.621, 0.205]	0.308
BMI, kg/m ²				-0.132	[-0.457, 0.194]	0.415	-0.100	[-0.447, 0.246]	0.558	0.002	[-0.365, 0.369]	0.993
ADI Cumulative							-0.007	[-0.518, 0.504]	0.977	-0.061	[-0.632, 0.510]	0.827
ACEs							0.013	[-0.394, 0.419]	0.949	0.093	[-0.415, 0.600]	0.710
Perceived discrimination							0.240	[-0.176, 0.656]	0.246	0.246	[-0.221, 0.714]	0.287
Income:needs							-0.031	[-0.479, 0.414]	0.888	0.094	[-0.371, 0.559]	0.680
MVPA, minutes										-0.073	[-0.596, 0.450]	0.775
Sedentary time, hours										0.485	[-0.017, 0.987]	0.058
Sleep duration, hours										0.189	[-0.284, 0.661]	0.417
Sleep efficiency, %										0.255	[-0.135, 0.645]	0.190
Adjusted R ² , %		12.57%			15.20%			8.87%			17.06%	
<i>p</i> value		0.019			0.058			0.231			0.161	

181 **Table S5. Multiple regression models on correlates of diastolic BP dip ratio.**

182 Regression adjusted for race (**model 1**); adjusted for race, BMI, age, and sex (**model 2**), race, BMI, age, sex, and social
 183 determinants of health (**model 3**); race, BMI, age, sex, social determinants of health, and health behaviors (**model 4**).
 184 Standardized estimates (β) and 95% confidence intervals (95% CI) reported. Abbreviations include: body mass index (BMI),
 185 area deprivation index (ADI), adverse childhood experiences (ACEs), and moderate to vigorous physical activity (MVPA).
 186 Significance was set to $p \leq 0.05$ for all statistical analyses.

Variables	Model 1			Model 2			Model 3			Model 4		
	β	95% CI	<i>p</i> value	β	95% CI	<i>p</i> value	β	95% CI	<i>p</i> value	β	95% CI	<i>p</i> value
Race	0.855	[0.234, 1.475]	0.008	1.132	[0.527, 1.736]	<0.001	0.988	[0.199, 1.777]	0.016	0.967	[-0.032, 1.964]	0.057
Age, years				-0.350	[-0.639, -0.061]	0.019	-0.319	[-0.646, 0.008]	0.055	-0.334	[-0.698, 0.030]	0.070
Sex				-0.191	[-0.491, 0.109]	0.203	-0.198	[-0.530, 0.133]	0.231	-0.117	[-0.529, 0.295]	0.562
BMI, kg/m ²				-0.198	[-0.491, 0.096]	0.180	-0.160	[-0.473, 0.153]	0.304	-0.105	[-0.472, 0.261]	0.558
ADI Cumulative							-0.005	[-0.468, 0.457]	0.981	-0.147	[-0.717, 0.423]	0.599
ACEs							0.138	[-0.229, 0.506]	0.447	0.305	[-0.202, 0.812]	0.225
Perceived discrimination							0.111	[-0.265, 0.488]	0.549	-0.003	[-0.470, 0.464]	0.989
Income:needs							0.018	[-0.385, 0.421]	0.927	-0.043	[-0.507, 0.422]	0.851
MVPA, minutes										0.283	[-0.239, 0.805]	0.273
Sedentary time, hours										-0.138	[-0.639, 0.363]	0.574
Sleep duration, hours										-0.178	[-0.650, 0.293]	0.442
Sleep efficiency, %										-0.071	[-0.461, 0.317]	0.708
Adjusted R ² , %		16.33%			31.15%			25.41%			17.39%	
<i>p</i> value		0.008			0.003			0.036			0.156	

187

188

189

190

191 **Table S6. Comparisons of social determinants of health, health behaviors, and**
 192 **blood/urine biomarkers based on blood pressure dipping status.** Mann-Whitney *U*-
 193 test and rank biserial correlation effect sizes reported. Systolic blood pressure dip ratios
 194 were classified as dippers (< 0.90) and non-dippers (\geq 0.90). Abbreviations include: area
 195 deprivation index (ADI), adverse childhood experiences (ACEs), moderate to vigorous
 196 physical activity (MVPA), and endothelin-1 (ET-1). *Significance set to $p \leq 0.05$.

Variables	Dippers vs Non-Dippers, <i>p value</i>	Dippers vs Non-Dippers, Effect size
Social determinants		
ADI Early Childhood	0.263	0.20
ADI Middle Childhood	0.038*	0.36
ADI Adolescence	0.784	0.05
ADI Cumulative	0.118	0.28
Income:needs	0.467	0.13
Perceived discrimination	0.842	0.04
ACEs	0.200	0.22
Health behaviors		
MVPA, minutes	0.029*	0.39
Steps, per day	0.136	0.27
Sedentary time, hours	0.268	0.20
Sleep duration, hours	0.092	0.31
Sleep efficiency, %	0.213	0.23
Energy, kcal	0.391	0.16
Total fat, g	0.787	0.05
Total carbohydrate, g	0.652	0.08
Total protein, g	0.964	0.01
Total fiber, g	0.153	0.26
Soluble fiber, g	0.189	0.24
Insoluble fiber, g	0.213	0.23
Calcium, mg	0.893	0.03
Magnesium, mg	0.719	0.07
Sodium, mg	0.457	0.14
Potassium, mg	0.513	0.12
Sodium:Potassium	0.857	0.03
Biomarkers		
Glucose, mg/dL	0.862	0.035
Triglycerides, mg/dL	0.205	0.235
Cholesterol, mg/dL	0.687	0.130
Low-density lipoprotein, mg/dL	0.882	0.063
High-density lipoprotein, mg/dL	0.939	0.025
Aldosterone, ng/dl	0.408	0.175
Plasma renin activity, ng/ml/hr	0.364	0.179
ET-1 excretion, pg/min	0.962	0.011

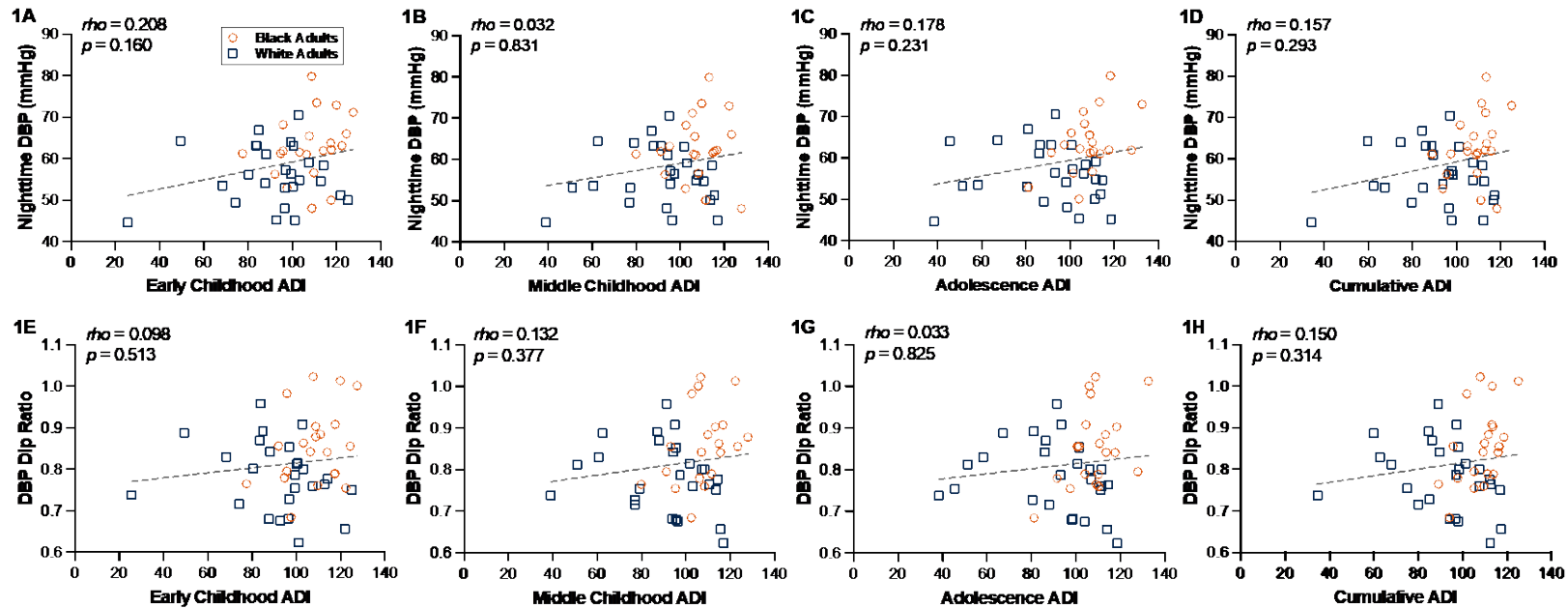
197 **Table S7. Sex comparison on blood pressure and kidney variables.**

198 Data reported in mean \pm SD (normal distribution) or median (IQR) (non-normal
199 distribution). Independent samples *t*-test was conducted for normally distributed data with
200 Cohen's *d* effect size. Mann-Whitney *U* test was conducted for non-normally distributed
201 data with rank biserial correlation effect size. Abbreviations include: blood pressure (BP)
202 and endothelin-1 (ET-1). *Significance was set to $p \leq 0.05$ for all statistical analyses.

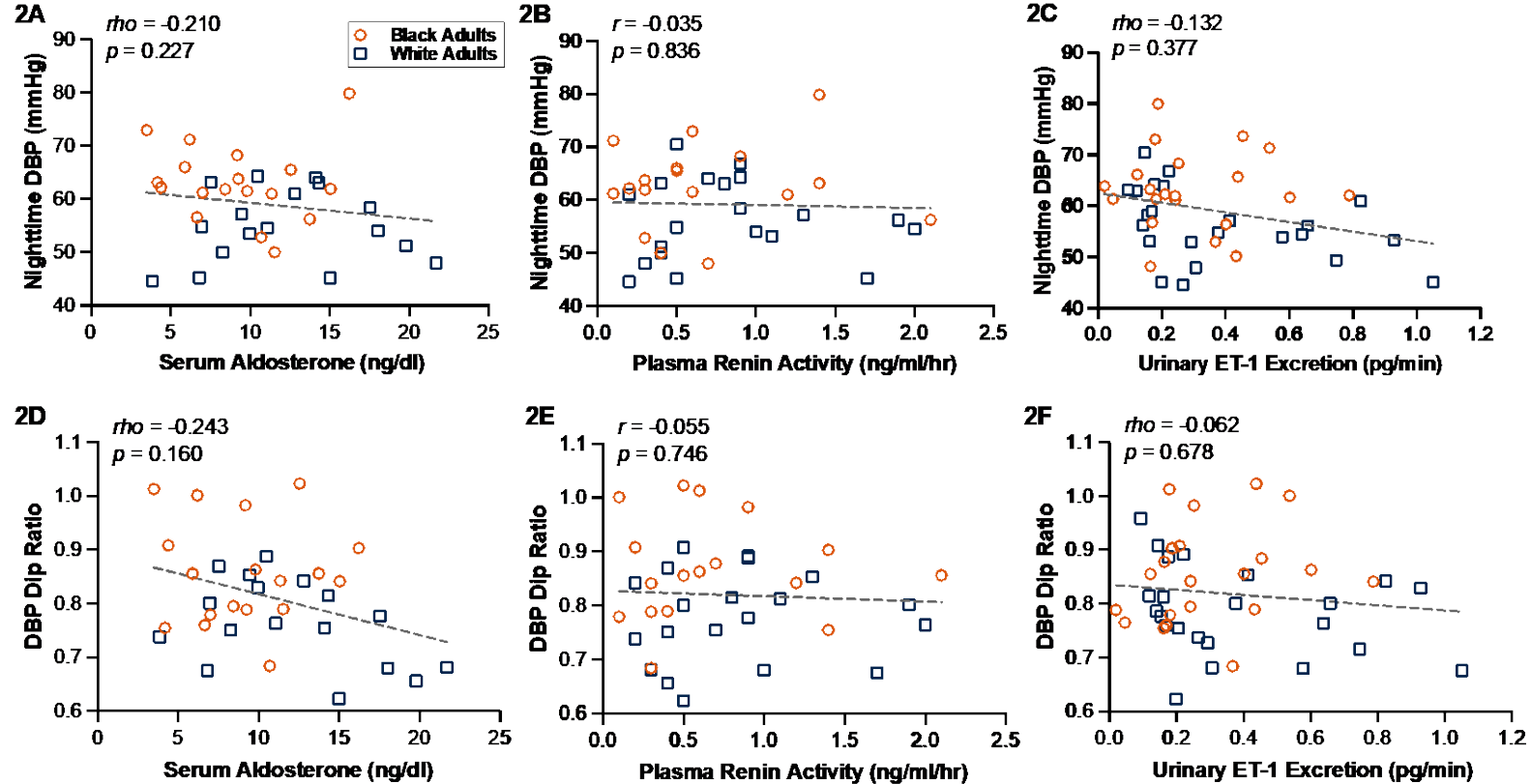
Variables	Male	Female	<i>p</i> value	Effect size
Screening systolic BP, mmHg	110 \pm 8	104 \pm 10	0.034	0.647
Screening diastolic BP, mmHg	64 (11)	63 (8)	0.804	0.044
Nighttime systolic BP, mmHg	117 \pm 8	106 \pm 9	<0.001	1.381
Nighttime diastolic BP, mmHg	59 \pm 9	59 \pm 8	0.795	0.077
Systolic BP dip ratio	0.90 \pm 0.06	0.88 \pm 0.06	0.339	0.285
Diastolic BP dip ratio	0.83 \pm 0.10	0.81 \pm 0.09	0.407	0.247
Aldosterone, ng/dl	11.85 \pm 4.00	9.97 \pm 4.91	0.252	0.408
Plasma renin activity, ng/ml/hr	0.90 (0.60)	0.45 (0.45)	0.029	0.424
Urinary ET-1 excretion, pg/min	0.20 (0.27)	0.27 (0.28)	0.573	0.103

100 Supplemental Figures

101



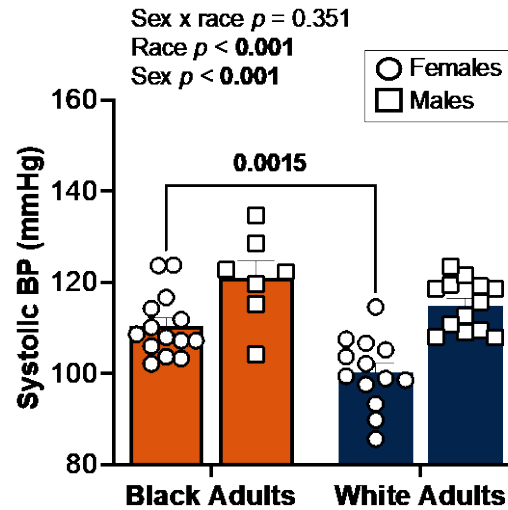
102 **Figure S1. The associations between area deprivation index (ADI) and nighttime diastolic blood pressure.**
 103 Spearman's ρ correlations in Black participants ($n=21$) and White participants ($n=26$) between nighttime diastolic BP and
 104 ADI during **(A)** early childhood; **(B)** middle childhood; **(C)** adolescence; and **(D)** cumulative reported. Spearman's ρ
 105 correlations between diastolic BP dip ratio and ADI during **(E)** early childhood; **(F)** middle childhood; **(G)** adolescence; and
 106 **(H)** cumulative reported. Orange dots represent Black participants and blue squares represent White participants.
 107 Significance was set to $p \leq 0.05$ for all statistical analyses.



108 **Figure S2. The associations between blood/urine biomarkers and nighttime diastolic blood pressure.** Pearson's r
 109 and Spearman's ρ correlations in Black participants ($n \geq 17$) and White participants ($n \geq 17$) between biomarkers with
 110 nighttime diastolic BP and **(A)** serum aldosterone; **(B)** plasma renin activity; **(C)** urinary ET-1 excretion reported. Correlations
 111 between biomarkers with diastolic BP dip ratio and **(D)** serum aldosterone; **(E)** plasma renin activity; **(F)** urinary ET-1
 112 excretion reported. Abbreviations include: endothelin-1 (ET-1) and diastolic blood pressure (DBP). Orange dots represent
 113 Black participants and blue squares represent White participants. Significance was set to $p \leq 0.05$ for all statistical analyses.
 114

115

116



117

118 **Figure S3. Race by sex comparison of nighttime systolic blood pressure.** Data
119 presented for Black males (mean: 121±10 mmHg), Black females (mean: 110±9 mmHg),
120 White males (mean: 116±5 mmHg), and White females (mean: 100±8 mmHg). Orange
121 bars represent Black participants and blue bars represent White participants. Circles
122 represent females and squares represent males. Significance was set to $p \leq 0.05$ for all
123 statistical analyses.

Supplemental Reference

1. Nichols OI, Fuller-Rowell TE, Robinson AT, Eugene D, Homandberg LK. Neighborhood Socioeconomic Deprivation in Early Childhood Mediates Racial Disparities in Blood Pressure in a College Student Sample. *Journal of Youth and Adolescence*. 2022;51:2146-2160. doi: 10.1007/s10964-022-01658-6
2. Williams DR, Yu Y, Jackson JS, Anderson NB. Racial Differences in Physical and Mental Health. *Journal of Health Psychology*. 1997;2:335-351. doi: 10.1177/135910539700200305
3. Krieger N, Smith K, Naishadham D, Hartman C, Barbeau EM. Experiences of discrimination: Validity and reliability of a self-report measure for population health research on racism and health. *Social Science & Medicine*. 2005;61:1576-1596. doi: 10.1016/j.socscimed.2005.03.006
4. Felitti VJ, Anda RF, Nordenberg D, Williamson DF, Spitz AM, Edwards V, Koss MP, Marks JS. Relationship of childhood abuse and household dysfunction to many of the leading causes of death in adults. The Adverse Childhood Experiences (ACE) Study. *Am J Prev Med*. 1998;14:245-258. doi: 10.1016/s0749-3797(98)00017-8
5. Cronholm PF, Forke CM, Wade R, Bair-Merritt MH, Davis M, Harkins-Schwarz M, Pachter LM, Fein JA. Adverse Childhood Experiences: Expanding the Concept of Adversity. *Am J Prev Med*. 2015;49:354-361. doi: 10.1016/j.amepre.2015.02.001
6. Finkelhor D, Shattuck A, Turner H, Hamby S. Improving the adverse childhood experiences study scale. *JAMA Pediatr*. 2013;167:70-75. doi: 10.1001/jamapediatrics.2013.420
7. Knaier R, Höchsmann C, Infanger D, Hinrichs T, Schmidt-Trucksäss A. Validation of automatic wear-time detection algorithms in a free-living setting of wrist-worn and hip-worn ActiGraph GT3X. *BMC Public Health*. 2019;19:244. doi: 10.1186/s12889-019-6568-9
8. Montoye AHK, Clevenger KA, Pfeiffer KA, Nelson MB, Bock JM, Imboden MT, Kaminsky LA. Development of cut-points for determining activity intensity from a wrist-worn ActiGraph accelerometer in free-living adults. *J Sports Sci*. 2020;38:2569-2578. doi: 10.1080/02640414.2020.1794244
9. Marino M, Li Y, Rueschman MN, Winkelmann JW, Ellenbogen JM, Solet JM, Dulin H, Berkman LF, Buxton OM. Measuring Sleep: Accuracy, Sensitivity, and Specificity of Wrist Actigraphy Compared to Polysomnography. *Sleep*. 2013;36:1747-1755. doi: 10.5665/sleep.3142
10. Chow CM, Wong SN, Shin M, Maddox RG, Feilds KL, Paxton K, Hawke C, Hazell P, Steinbeck K. Defining the rest interval associated with the main sleep period in actigraph scoring. *Nat Sci Sleep*. 2016;8:321-328. doi: 10.2147/nss.s114969
11. Fuller-Rowell TE, Nichols OI, Robinson AT, Boylan JM, Chae DH, El-Sheikh M. Racial disparities in sleep health between Black and White young adults: The role of neighborhood safety in childhood. *Sleep Med*. 2021;81:341-349. doi: 10.1016/j.sleep.2021.03.007
12. Culver MN, Mcmillan NK, Cross BL, Robinson AT, Montoye AH, Riemann BL, Flatt AA, Grosicki GJ. Sleep duration irregularity is associated with elevated

- blood pressure in young adults. *Chronobiology International*. 2022:1-9. doi: 10.1080/07420528.2022.2101373
13. Hoopes EK, Berube FR, D'Agata MN, Patterson F, Farquhar WB, Edwards DG, Witman MAH. Sleep duration regularity, but not sleep duration, is associated with microvascular function in college students. *Sleep*. 2021;44. doi: 10.1093/sleep/zsaa175
 14. Food Amount Reporting Booklets. Nutrition Coordinating Center (NCC), University of Minnesota. Accessed October 4th.