

1 **Title (92/100 characters with spaces):** Interim influenza vaccine effectiveness  
2 estimates during the 2023 Southern Hemisphere season

3  
4 **Subtitle (58/60 characters with spaces):** Influenza vaccine effectiveness in Lima,  
5 Peru, 2023

6  
7 **Authors:**

8 (1) J Gonzalo Acevedo-Rodriguez, MD

9 Instituto de Medicina Tropical Alexander von Humboldt, Universidad Peruana  
10 Cayetano Heredia, Lima, Perú

11 (2) Carlos Zamudio, MD

12 Instituto de Medicina Tropical Alexander von Humboldt, Universidad Peruana  
13 Cayetano Heredia, Lima, Perú

14 (3) Noah Kojima, MD

15 Centers for Disease Control and Prevention, Atlanta, Georgia, U.S.A

16 (4) Fiorella Krapp, MD, MSc

17 Instituto de Medicina Tropical Alexander von Humboldt, Universidad Peruana  
18 Cayetano Heredia, Lima, Perú

19 (5) Pablo Tsukayama, PhD, MSc

20 Instituto de Medicina Tropical Alexander von Humboldt, Universidad Peruana  
21 Cayetano Heredia, Lima, Perú

22 (6) C Stefany Neciosup-Vera, MSc

23 Departamento de Ciencias, Pontificia Universidad Católica del Perú, Lima, Perú

24 (7) Eduardo Gotuzzo, MD, FACP, FIDSA

25 Instituto de Medicina Tropical Alexander von Humboldt, Universidad Peruana

26 Cayetano Heredia, Lima, Perú

27 (8) and the PISAAC working group authors (Elsa González, Giancarlo Sal y Rosas,

28 Ericka Meza, Paula Arribas, Francesca Ginocchio, Flavia Morán, Renato Cava, Roberto

29 Freire-Esteves, Laura Castro, Ashley Fowlkes, and Eduardo Azziz-Baumgartner).

30

31 **Keywords:** Influenza; Incidence, Lineage, Vaccine effectiveness; Peru

32

33 **Corresponding Author Contact Information:** J Gonzalo Acevedo-Rodriguez, MD.

34 Instituto de Medicina Tropical Alexander von Humboldt, Universidad Peruana Cayetano

35 Heredia, Av. Honorio Delgado 430, San Martin de Porres, 15102, Lima-Peru

36 ([juan.acevedo@upch.pe](mailto:juan.acevedo@upch.pe)).

37

38 **Abstract**

39 Our findings suggest that a substantial number of people sought care for CLI during an

40 early Southern Hemisphere season during which A/H1N1pdm09 clade 6B.1A.5a.2a

41 viruses predominated. The minority vaccinated benefitted from the A/Victoria/2570/2019

42 (H1N1)pdm09-like antigen which afforded good protection against illness.

43

44 **Main Text**

45 Evaluations of vaccine effectiveness (VE) against influenza in the Southern

46 Hemisphere (SH) can assist that region of the world and provide insights into the

47 anticipated performance of Northern Hemisphere (NH) vaccines.<sup>1,2</sup> Using population-  
48 based surveillance data for COVID-19, we estimated VE against medically attended  
49 influenza in Lima, Peru.

50 From January 1 to July 31, 2023, our population-based surveillance identified  
51 patients seeking care at two primary health centers in San Juan de Lurigancho, Lima.  
52 Patients presenting with COVID-19-like illness (CLI, defined as onset  $\leq 7$  days of  $\geq 2$   
53 signs or symptoms, e.g., documented or reported fever, chills, rigors, myalgia,  
54 headache, and sore throat) were asked for written consent to participate. Enrolled  
55 participants reported preexisting condition and influenza vaccine histories and provided  
56 nasopharyngeal swabs for influenza virus and SARS-CoV-2 testing through multiplex  
57 qPCR.<sup>3</sup> Whole-genome sequencing was conducted for positive specimens with a cycle  
58 threshold value  $\leq 25$  using the Illumina Respiratory Virus Panel.

59 Incidence of medically attended influenza illness was estimated by dividing the  
60 number of patients with CLI that consented to participate by the population assigned to  
61 the health centers (i.e., 91,801) and adjusting for enrollment (supplement). Patients who  
62 self-reported influenza vaccination from May 2022 until  $>14$  days before enrollment  
63 were classified as vaccinated. VE against medically attended influenza was calculated  
64 using a test-negative design.<sup>4</sup> Cases were defined as patients with a test-positive for  
65 influenza by qPCR test and controls as patients test-negative for both influenza and  
66 SARS-CoV-2. The study was approved by the institutional review board of Universidad  
67 Peruana Cayetano (PRISA repository: E10002439) Centers for Disease Control and  
68 Prevention non-research determination 0900f3eb81ecbe9f.

69 During study period, 923 (13.9%) of 6,660 persons who sought outpatient care  
70 met criteria for CLI, and 567 (61.4%) were enrolled and had testing for influenza viruses  
71 and SARS-COV-2 (Table 1). Influenza was detected in 106 (18.7%) as early as January,  
72 months before the historical May start of influenza seasons in Lima (Figure 1). Seventy-  
73 nine (75%) patients with CLI tested-positive for influenza A and 27 (25%) for B. We  
74 sequenced 32 influenza A specimens; 29 (90.6%) were A(H1N1)pdm09 clade  
75 6B.1A.5a.2a (Table 1). The cumulative incidence of medically attended influenza per  
76 1,000 population was 10.1 (95% confidence interval [95%CI]: 8.2–12.0) for influenza A  
77 and 3.5 (95%CI: 2.3–4.6) for influenza B. Only 112 (19.7%) patients were vaccinated  
78 against influenza. The age and month adjusted VE against medically attended influenza  
79 was 65.1% (95%CI: 26.5–83.4); 58.2% (95%CI: 5.1–81.6) for influenza A and 77.6%  
80 (95%CI: 0–95.5) for B.

81 During the 2023 SH season, a substantial number of people sought care for  
82 influenza, but incidence was lower than reported among persons seeking care for  
83 influenza-like illness from before COVID-19.<sup>5</sup> 2023 SH VE against influenza was similar  
84 to that of the 2022 SH season<sup>1,2</sup> and the 2022-2023 U.S. season<sup>6</sup> even though  
85 A(H1N1)pdm09 clade 6B.1A.5a.2a viruses predominated in 2023 whereas influenza  
86 A(H3N2) clade 2.a3 viruses predominated in 2022.<sup>7</sup> The A/Victoria/2570/2019  
87 (H1N1)pdm09-like virus in the SH vaccine conferred a 65% risk reduction in medically  
88 attended influenza, yet fewer than one in five persons in this evaluation reported  
89 receiving an influenza vaccine during 2023.

90 Our findings are subject to limitations. First, in the absence of healthcare  
91 utilization surveys, it is unclear if the population assigned to our clinics always sought

92 care there versus other clinics. Second, only half of specimens had cycle threshold  
93 value  $\leq 25$ ; thus, it is possible that we missed clades. Finally, confounding might remain  
94 in our analysis despite our statistical models.

95 In conclusion, our findings suggest that mostly unvaccinated people sought care  
96 early during SH season for illnesses predominantly attributable to A/H1N1pdm09 clade  
97 6B.1A.5a.2a viruses. Persons vaccinated benefitted from the A/Victoria/2570/2019  
98 (H1N1)pdm09-like antigen, which afforded good protection against illness. If the same  
99 viruses predominate in the NH, our estimates of 2023 SH influenza vaccine  
100 effectiveness suggest that 2023-2024 NH influenza vaccines, which include a similar  
101 strain composition, could provide similar protection during the upcoming influenza  
102 season.

103

104 **Declarations:**

105 None.

106 **Funding:**

107 This study was supported by the Centers for Disease Control and Prevention  
108 cooperative agreement award GH00266.

109 **Disclaimer:**

110 The findings and conclusions in this report are those of the authors and do not  
111 necessarily represent the official position of the Centers for Disease Control and  
112 Prevention.

113 **Author Contribution:**

114 CZ and EG had full access to all the data in the study and take responsibility for the  
115 integrity of the data and the accuracy of the data analysis. Data will be shared by  
116 contacting the corresponding author upon request for research purposes. JGA-R, CZ,  
117 FK, FM, PT and EG conceived and designed the study, EM coordinated laboratory  
118 analysis, PT performed genomic sequencing, PA, FG and RC coordinated data  
119 collection and management, CSN-V and GSR performed the statistical analysis. All  
120 authors wrote and approved the final manuscript. NK and EGL helped draft, edit and  
121 review the manuscript. LC, AF and EAB helped interpret findings and edit the  
122 manuscript.

123 **Acknowledgements:**

124 None

## 125 **References**

- 126 1. Chard AN, Nogareda F, Regan AK, et al. End-of-season influenza vaccine  
127 effectiveness during the Southern Hemisphere 2022 influenza season - Chile,  
128 Paraguay, and Uruguay. *Int J Infect Dis*. Sep 2023;134:39-44.  
129 doi:10.1016/j.ijid.2023.05.015
- 130 2. Olivares Barraza MF, Fasce RA, Nogareda F, et al. Influenza Incidence and  
131 Vaccine Effectiveness During the Southern Hemisphere Influenza Season - Chile, 2022.  
132 *MMWR Morb Mortal Wkly Rep*. Oct 28 2022;71(43):1353-1358.  
133 doi:10.15585/mmwr.mm7143a1
- 134 3. Nagy A, Černíková L, Kunteová K, et al. A universal RT-qPCR assay for “One  
135 Health” detection of influenza A viruses. *PloS one*. 2021;16(1):e0244669.  
136 doi:10.1371/journal.pone.0244669
- 137 4. Jackson ML, Nelson JC. The test-negative design for estimating influenza  
138 vaccine effectiveness. *Vaccine*. Apr 19 2013;31(17):2165-8.  
139 doi:10.1016/j.vaccine.2013.02.053
- 140 5. Tinoco YO, Azziz-Baumgartner E, Uyeki TM, et al. Burden of Influenza in 4  
141 Ecologically Distinct Regions of Peru: Household Active Surveillance of a Community  
142 Cohort, 2009-2015. *Clin Infect Dis*. Oct 16 2017;65(9):1532-1541.  
143 doi:10.1093/cid/cix565
- 144 6. McLean HQ, Petrie JG, Hanson KE, et al. Interim Estimates of 2022–23  
145 Seasonal Influenza Vaccine Effectiveness — Wisconsin, October 2022–February 2023.  
146 *MMWR Morbidity and Mortality Weekly Report*. 2023;72(8):201-205.  
147 doi:10.15585/mmwr.mm7208a1

148 7. GISAID. Real-time tracking of influenza A/H3N2 evolution. 7 Sep 2023,

149 <https://gisaid.org/database-features/influenza-genomic-epidemiology/>

150



151 Table 1. Influenza test results and seasonal vaccination status among patients presenting in two primary care centers with  
 152 COVID-19-like illness in Lima, Peru, by selected characteristics (N = 567), January–May 2023

Characteristic	Enrolled Patients		p-value <sup>†</sup>	Influenza test result, no. (%)		p-value <sup>†</sup>
	Total no.	No. (row %) vaccinated*		Positive	Negative	
<b>Overall</b>	<b>567</b>	<b>112 (19.7)</b>	—	<b>106 (18.7)</b>	<b>461 (81.3)</b>	—
<b>Age in years</b>						
<5	100	29 (29.0)	0.007	6 (6.0)	94 (94.0)	<0.005
5 – 59	407	67 (16.5)		93 (22.9)	314 (77.1)	
≥60	60	16 (26.7)		7 (11.7)	53 (88.3)	
<b>Preexisting conditions<sup>§</sup></b>						
One or more condition	116	22 (19.0)	0.91	20 (17.2)	96 (82.8)	0.75
No preexisting conditions	451	90 (20.0)		86 (19.1)	365 (80.9)	
<b>Sex</b>						
Male	207	41 (19.8)	1	48 (23.2)	159 (76.8)	0.05
Female	360	71 (19.7)		58 (16.1)	302 (83.9)	
<b>Influenza test result</b>						
Negative	461	102 (22.1)	—	—		
Influenza (any)	106	10 (9.4)	<0.005			
Influenza A	79	8 (10.1)	0.03			
Influenza B	27	2 (7.4)	0.13			
<b>Influenza sequence result</b>						
<b>Tested</b>	50	3 (6.0)	0.08			
A(H1N1) clade 6B.1A.5a.2a	29	0 (0)				
A(H3N2) clade 3C.2a1b.2a.2a.3	3	0 (0)				
B/Victoria clade V1A.3a.2	9	2 (22.3)				

153

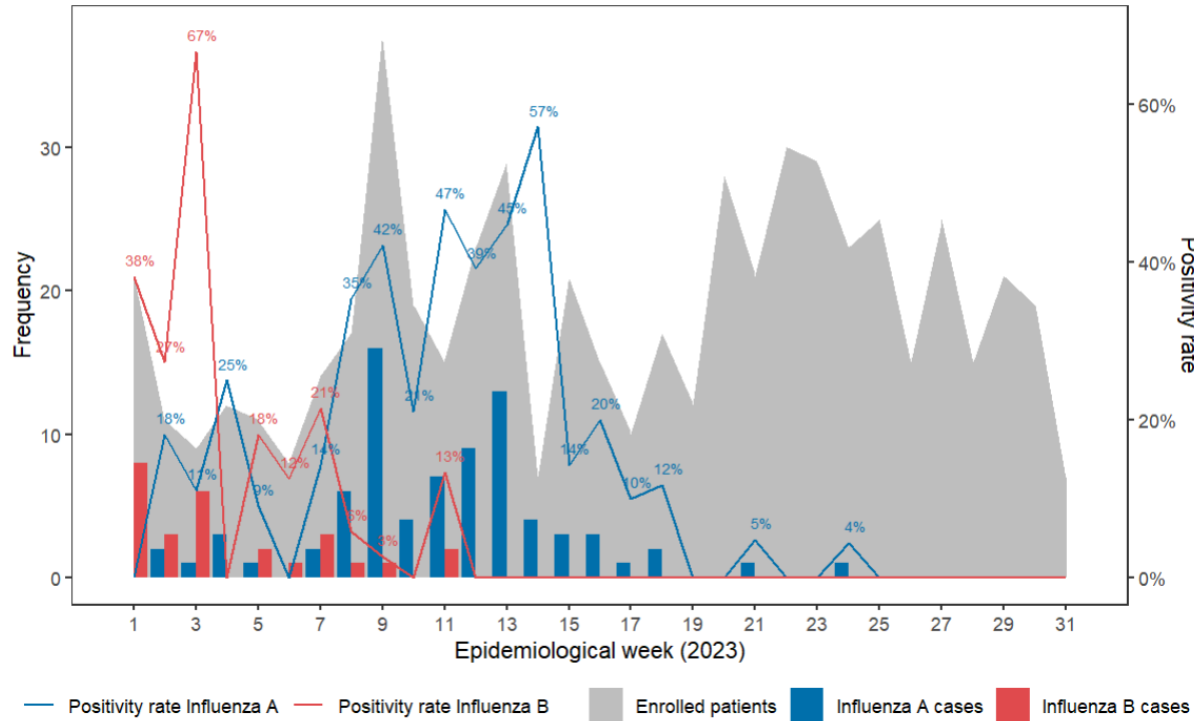
154 \*Vaccinated: defined as self-reported influenza vaccination from May 2022 until >14 days before enrolment. Self-reporting  
155 was used because seasonal influenza immunization is not routinely entered in the national electronic registry.  
156 Nevertheless, we could verify the exact date of vaccination for 87/112 participants and 19 more recalled the month and  
157 year of vaccination. According to these data, 96/112 received the 2022 vaccine (May 2022–Apr2023) and 10/112 received  
158 the 2023 vaccine. For 6/112, it was unknown if they received the 2022 or the 2023 seasonal vaccine because timing of  
159 vaccination was not ascertained.

160 † Tested using chi square with a significance level of  $p < 0.05$ . Fisher exact test was used when an expected value was less  
161 than 5.

162 § Preexisting conditions: pregnancy, diabetes mellitus, hypertension, asthma, chronic hepatopathy, chronic neurological,  
163 hematological, pulmonary or renal disease, immunodeficiency (including HIV), cardiovascular or cerebrovascular disease,  
164 cancer, Down syndrome and other relevant conditions.

165

166 Figure 1: Weekly laboratory-confirmed incident influenza cases and positivity rate at two primary care health centers from  
 167 patients who presented with COVID-19-like illness in Lima, Peru, January–May 2023



168