

1 **TITLE PAGE**

2 **Intragastric behavior of an experimental infant formula may better mimic**
3 **intragastric behavior of human milk as compared to a control formula**

4 Julia J.M. Roelofs, MSc^a, Reina S. Tjoelker, MSc^b, Tim T. Lambers, PhD^b, Paul A.M.
5 Smeets, PhD^a

6

7 Author affiliations:

8 ^aDivision of Human Nutrition and Health, Wageningen University,

9 Stippeneng 4, 6708 WE Wageningen, The Netherlands

10 ^bFrieslandCampina, Stationsplein 4, 3818 LE Amersfoort, The Netherlands

11

12 Pubmed indexing:

13 Roelofs JJM (julia.roelofs@wur.nl)

14 Tjoelker RS (reina.tjoelker@frieslandcampina.nl)

15 Lambers TT (tim.lambers@frieslandcampina.nl)

16 Smeets PAM (paul.smeets@wur.nl)

17

18 Conflict of Interest and Funding Disclosure:

19 Julia JM Roelofs: no conflicts of interest

20 Reina S. Tjoelker: employed at FrieslandCampina

21 Tim T. Lambers: employed at FrieslandCampina

22 Paul A.M. Smeets: no conflicts of interest

23 Source of support: FrieslandCampina

24

25 Corresponding Author

26 Name: Julia Roelofs

27 Mailing address: Stippeneng 4, 6708 WE Wageningen

28 Telephone number: +31657378595

29 E-mail address: julia.roelofs@wur.nl

30

31 List of abbreviations:

32 BM Breast Milk

33 BMI Body Mass Index

34 FDR False Discovery Rate

35 FFA Free Fatty Acids

36 IF Infant Formula

37 MFGM Milk Fat Globule Membrane

38 MRI Magnetic Resonance Imaging

39 NMR Nuclear Magnetic Resonance

40 SGF Simulated Gastric Fluid

41

42 Ethical statement and registration:

43 Ethical approval for the involvement of human subjects in this study was granted
44 by the Medical Ethical Committee of Wageningen University (Reference
45 number: NL7 7717.091.21, dated November 1st, 2021) and is in accordance with
46 the Helsinki Declaration of 1975 as revised in 2013. This study was registered
47 with clinicaltrials.gov under number NCT05224947.

48

49 Number of figures: 4

50 Number of tables: 2

51 Supplementary data submitted: yes

52 **Abstract**

53 **Background:** During breastfeeding the macronutrient composition of breastmilk
54 changes gradually from relatively low-fat (foremilk) to relatively high-fat (hindmilk),
55 initially exposing the gastrointestinal tract to a relatively low fat concentration. In
56 contrast, infant formulae (IF) are homogenous. Mild processing and addition of milk fat
57 globule membrane (MFGM) may impact gastric emulsion instability, potentially
58 impacting the phased release of nutrients as observed during breastfeeding.

59 **Objective:** To assess gastric emulsion stability, gastric emptying, and the postprandial
60 plasma metabolome of an experimental minimally processed IF (EF) with an altered
61 fat-globule interface and a control IF (CF).

62 **Methods:** Twenty healthy males participated in this double-blind randomized
63 crossover trial. Gastric MRI scans and blood samples were obtained before and after
64 consumption of 600 ml CF or EF over a 2-h period. Outcomes included gastric top
65 layer formation, total gastric volume, and blood parameters (FFA, insulin, glucose, and
66 NMR-metabolomics).

67 **Results:** EF showed an earlier onset (13.4 min, $p=0.017$), smaller maximum volume
68 (49.0 ml, $p= 0.033$), and a shorter time to maximum top layer volume (13.9 min,
69 $p=0.022$), but similar AUC ($p=0.915$) compared to CF. Total gastric volume did not
70 show a treatment*time effect. Insulin concentrations were lower for EF. FFA and
71 glucose did not differ. EF yielded higher serum concentrations of phospholipid- and
72 cholesterol-related metabolites.

73 **Conclusion:** An EF displayed faster gastric creaming than a CF, thereby potentially
74 better mimicking the behavior of breastmilk which leads to phased release of nutrients
75 into the intestine. Overall physiological benefits of this difference in gastric behavior
76 remain to be studied further in infants.

77 **Keywords:** Infant formula; emulsion stability; gastric behavior; digestion; MRI

78 **1 Introduction**

79 Breastmilk (BM) provides the best nutrition for the growth, development and health of
80 infants (Victora et al., 2016; WHO, 2003). In case BM is not or not sufficiently available,
81 or in case parents choose to feed their infant otherwise, infant formula (IF) is the only
82 safe alternative to provide adequate nutrition (Dewey, 2003; WHO, 2003).
83 Nevertheless, several reviews and meta-analyses report that differences in infant
84 feeding may have different health effects. For instance, a longer duration of
85 breastfeeding is associated with up to 26% reduced odds of overweight or obesity later
86 in life (Harder et al., 2005; Victora et al., 2016; Weng et al., 2012).

87 One of the many differences between BM and IF is the change in fat content during a
88 feed. During breastfeeding, the milk fat content and thus the caloric density of BM,
89 slowly increases from low in foremilk, to relatively high in hindmilk (Daly et al., 1993;
90 Forsum & Lonnerdal, 1979; Hytten, 1954; Italianer et al., 2020; Kent et al., 2006). With
91 breastfeeding, the gastrointestinal tract will thus initially be exposed to a lower fat
92 concentration. In addition, it is known that the fat content of BM varies greatly between
93 individuals and shows diurnal variation (Khan et al., 2013). In contrast, the fat content
94 of IF is stable during a feed and throughout the day. Physiologically, these differences
95 may impact feed intake as e.g. the changes in fat content during breastfeeding are
96 thought to influence satiation and overall feed intake (Perez-Escamilla et al., 1995).

97 Both BM and IF are essentially oil-in-water emulsions (Wang et al., 2023). The fat
98 globules in BM are covered by a biological membrane called the milk fat globule
99 membrane (MFGM). This membrane not only stabilizes the emulsion, but also
100 facilitates digestion (Lopez, 2020). In contrast to BM, the fat globules in IF are primarily
101 stabilized by proteins such as whey proteins and caseins (McCarthy et al., 2012).
102 Under gastric conditions, as a result of pepsin-mediated protein digestion, these
103 emulsions will destabilize, causing coalescence and creaming of the milk fat globules

104 which results in a high-fat top layer (Kunz et al., 2005). Due to their different fat globule
105 interface and coherent emulsion stabilities, BM and IF destabilize at different rates in
106 the stomach (Bourlieu et al., 2015; Camps et al., 2021; Chai et al., 2022).

107 In addition to protein composition, formula processing also influences emulsion
108 stability, mainly by heating-induced protein denaturation (Ye et al., 2020). Particularly
109 whey proteins are sensitive to this and form complexes with caseins upon heating
110 (Anema et al., 2004; Fox et al., 2015; Guyomarc'h et al., 2009; Mulet-Cabero et al.,
111 2019). The formation of these complexes results in a higher emulsion stability because
112 more whey proteins are absorbed at the fat-globule interface stabilized by caseins
113 (Raikos, 2010). More severe heat treatment of IF may thus impact gastric emulsion
114 stability resulting in slower coalescence and creaming in the stomach.

115 Overall, BM is known to have a faster gastric emptying rate compared to IF (Meyer et
116 al., 2015; Van Den Driessche et al., 1999; Wang et al., 2023). This was also confirmed
117 by Camps et al. (2021) with the use of Magnetic Resonance Imaging (MRI) in adults.

118 The advantage of using MRI in digestive research is that it allows for visualization and
119 quantification of intragastric processes such as gastric emptying and emulsion stability
120 (Smeets et al., 2021). However, due to ethical constraints, MRI cannot be used to
121 assess gastric processes in healthy infants for research purposes.

122 Therefore, in this proof-of-concept study, gastric emulsion stability, gastric emptying,
123 and post-prandial plasma metabolomics of an experimental IF, produced with a
124 reduced heat-load and enriched in MFGM, was compared with a control IF in healthy
125 adults. To complement this *in vivo* study, *in vitro* digestions were performed under both
126 simulated infant and adult conditions to investigate emulsion stability of the formulae
127 under gastric conditions. It was hypothesized that the different fat-globule interface
128 resulting from differences in formula composition and processing would result in faster

129 gastric emulsion instability thereby potentially better mimicking the phased-release of
130 nutrients in the intestine as observed with breastfeeding.

131 **2 Participants and methods**

132 *2.1 In vitro digestion*

133 *In vitro* gastric digestion was performed using a semi-dynamic digestion model based
134 on the international INFOGEST standard simulating infant and adult gastric conditions
135 as described (Lambers et al., 2023). Digestion units contained 2.5 ml (infant), or 6 ml
136 (adult) simulated gastric fluid (SGF), containing 30 mM HCl (Sigma-Aldrich) and 300
137 U/ml pepsin (Sigma-Aldrich, P6887) for infant or 100 mM HCl and 1000 U/ml pepsin
138 for adult conditions, at the start of the experiment to simulate the fasting state. 60 ml
139 formula was added immediately (adult) or with a feed flow of 3 ml/min (simulating a
140 typical infant feeding time of 20 min) and SGF with a flow of 0.39 ml/min (infant) or
141 0.72 ml/min (adult) was added until sampling pH using preprogrammed DAS-box
142 scripts. Subsequently, protease inhibitors (Pepstatin A, 5 μ M, Sigma-Aldrich) were
143 added to stop the enzymatic reactions and visually analyze layer formation over time.
144 During the simulated digestion, samples were taken at pH values representing both
145 the early and later phases of gastric digestion (Bourlieu et al., 2014) and layer
146 formation was visually assessed with the use of photographs.

147

148 *2.2 In vivo trial*

149 *2.2.1 Design*

150 This study was a double-blind randomized crossover trial in which healthy men
151 underwent gastric MRI scans and blood sampling at baseline and after consumption
152 of two formulae. The primary outcome was gastric top layer formation resulting from
153 emulsion instability. Secondary outcomes were total gastric volume, and blood
154 parameters related to metabolic responses, including free fatty acids (FFA), glucose,
155 insulin, and a range of (Nuclear Magnetic Resonance (NMR)-based) metabolites. In

156 addition, subjective ratings of appetite (hunger, fullness, thirst, desire to eat, and
157 prospective consumption) and nausea were collected. The study procedures were
158 approved by the Medical Ethical Committee of Wageningen University in accordance
159 with the Helsinki Declaration of 1975 as revised in 2013. The study was registered with
160 clinicaltrials.gov under number NCT05224947. All participants signed an informed
161 consent.

162

163 *2.2.2 Participants*

164 Twenty healthy (self-reported) males aged 18-45 y and with a BMI between 18.5 and
165 25 kg/m² were included. Participants were excluded if they reported an allergy or
166 intolerance for cow's milk, lactose, soy and/or fish, gastric disorders, or regular gastric
167 complaints, used medication that affects gastric behavior, smoked more than 2
168 cigarettes per week, had an alcohol intake >14 glasses per week, or had a contra-
169 indication to MRI scanning (including but not limited to pacemakers and defibrillators,
170 ferromagnetic implants, and claustrophobia). Since female sex hormone levels are
171 known to influence gastrointestinal function, only males were included in the study
172 (Gonenne et al., 2006; Lajterer et al., 2022; Soldin & Mattison, 2009). Participants were
173 recruited via digital advertisements (e-mail and social media). In total, 20 men
174 participated in the study (age: 25.5 ± 5.8 y, BMI: 21.9 ± 1.5 kg/m²) (**Supplementary
175 Figure 1**).

176

177 *2.2.3 Treatments*

178 A routine cow's milk-based formula (control IF, CF) and an experimental mildly
179 processed formula (i.e. low-temperature pasteurization) comprised of skimmed milk, a
180 native whey protein concentrate (Hiprotal® Milkserum 60 Liquid, FrieslandCampina),

181 and a MFGM-enriched whey protein concentrate (Vivinal® MFGM, FrieslandCampina)
182 (experimental IF, EF) were used. Both products met the nutritional requirements of
183 infants (0 to 6 months) (**Table 1**), were produced specifically for this study, and were
184 produced under food-grade conditions. Participants consumed 600 ml of the formulae
185 at approximately 37 °C as prescribed in the preparation instruction of both formulae.

186

187 *2.2.4 Study procedures*

188 Participants were instructed to consume the same meal the evening prior to both test
189 days. After this the overnight fasting period of minimally 12 hours started. Drinking
190 water was allowed up to 2 hours prior to their visit. Upon arrival at Hospital Gelderse
191 Vallei (Ede, The Netherlands), a cannula was placed in an antecubital vein, a blood
192 sample was taken, a baseline MRI scan was performed, and subjective ratings on
193 appetite and nausea were obtained. Subsequently, participants consumed one of the
194 two formulae from a cup while in an upright position. Mean (\pm SD) ingestion time was
195 2.1 (\pm 0.9) min (CF: 2.3 ± 0.9 min, EF: 2.0 ± 0.9 min). Subsequently, gastric MRI scans
196 were performed at 5-minute intervals during the first 30 minutes after the start of
197 consumption. After that, scans were made every 10 minutes, up until 2 hours. Blood
198 samples were taken at $t = 15, 30, 45, 60, 75, 90$ and 120 min. In addition, participants
199 were asked to verbally rate their appetite and nausea on a scale from 0 (not at all) to
200 100 (very much) every 10 minutes, up to 90 minutes (Noble et al., 2005) (**Figure 1**).

201

202 *2.2.5 MRI scanning*

203 Participants were scanned in a supine position with the use of a 3 Tesla Philips Ingenia
204 Elition X MRI scanner (Philips, Eindhoven, The Netherlands). A 2-D Turbo Spin Echo
205 sequence (37 4-mm slices, 1.4 mm gap, 1 x 1 mm in-plane resolution, TR: 550 ms, TE

206 80 ms, flip angle: 90 degrees) was used with breath hold command on expiration to
207 fixate the position of the diaphragm and the stomach. The scan lasted approximately
208 20 seconds.

209

210 *2.2.6 MRI image analysis*

211 Gastric top layer volume and total gastric content volume were manually delineated
212 with the use of the program MIPAV (Medical Image Processing, Analysis and
213 Visualization Version 7.4.0, 2016) (**Figure 2**). Top layer volume and total gastric
214 volume were calculated for each time point with the use of MATLAB (2021b), taking
215 into account slice thickness and gap distance. A representative example of a complete
216 time series for both formulae is shown in the supplement (**Supplementary Figure 2**).

217 The stomach contents were independently delineated by two researchers. To ensure
218 that both researchers delineated total gastric volume and top layer in the same manner,
219 the scans of both sessions of three participants were assessed by both researchers.
220 The delineations were then discussed, and consensus agreements were made to
221 ensure similar assessment by both observers. After this, scans were delineated by one
222 of the two researchers. 15% of the sessions were analyzed in duplicate to check for
223 potential differences. For top layer volume this resulted in an interclass correlation
224 coefficient of 0.903 (95% CI: 0.849 – 0.938) which indicates good reliability. For total
225 gastric content volume this was 0.997 (95% CI: 0.993-0.998), indicating excellent
226 reliability (Koo & Li, 2016).

227

228 *2.2.7 Blood sample collection and analysis*

229 Blood samples were drawn from the IV cannula into sodium-fluoride, serum-, and
230 EDTA tubes. After collection, the serum tubes were allowed to clot for 60 min. All tubes
231 were centrifuged at 1000 g for 10 min. The sodium-fluoride and serum tubes were
232 centrifuged at 22°C and the EDTA tubes at 4°C. The aliquots were stored at -80°C
233 until they were analyzed in bulk. To determine glucose concentrations, the sodium-
234 fluoride plasma samples were processed using the Atellica CH Glucose Hexokinase_3
235 (GluH_3) assay kit and quantified using the Atellica CH analyzer (Siemens
236 Healthineers, Netherlands) by a clinical chemistry laboratory (Ziekenhuis Gelderse
237 Vallei, Ede, The Netherlands). The lower detection limit was 0.2 mmol/l and a
238 maximum intra-assay CV of 4.5%. The EDTA plasma samples were processed and
239 insulin was quantified using an enzymatic immunoassay kit (ELISA, Mercodia AB,
240 Sweden). The lower detection limit was 1 mU/L and inter-assay CVs ranged from 3.3-
241 19.1%. For the quantification of FFA, EDTA plasma samples were processed and
242 quantified with an enzymatic kit (InstruChemie, Delfzijl, The Netherlands). The lower
243 detection limit was 0.008 mmol/l and inter-assay CVs ranged from 0.2-20.9%.
244 Quantification of 250 (NMR-based) metabolites was performed in the serum samples
245 using ¹H-NMR metabolomics (Nightingale Health Ltd, Helsinki, Finland,
246 <https://nightingalehealth.com/>) (Würtz et al., 2017).

247

248 *2.2.8 Sample size*

249 Sample size was calculated for the primary outcome top layer formation. The
250 calculation was based on Camps et al. (2021) who found that an intake volume of 200
251 ml IF resulted in a top layer of 17 ± 2.3 ml in adults. Therefore, it was expected that
252 intake of 600 ml IF would result in a top layer of approximately 50 ml. With a larger
253 intake volume, the magnitude of individual differences was expected to increase. Thus,
254 it was estimated that the deviation from control would increase to approximately 13 ml.

255 The minimal MRI-detectable difference in top layer deemed clinically relevant was
256 estimated at 10 ml. Based on a two-sided test, an α of 0.05 and a power of 0.9, it was
257 estimated that 20 complete datasets were needed. The calculation was done using:
258 http://hedwig.mgh.harvard.edu/sample_size/js/js_crossover_quant.html.

259

260 *2.2.9 Statistical analysis*

261 For gastric top layer formation, the time at which the top layer appeared (onset) was
262 compared between treatments. In addition, the maximum top layer volume and time to
263 maximum top layer volume was identified for each individual. All three parameters were
264 compared between treatments with a paired t-test and with a linear mixed model that
265 included baseline gastric volume as covariate. AUC of the top layer and total gastric
266 volume over time were also calculated for each individual using the trapezoidal rule
267 and compared with paired t-tests. Pearson correlation coefficients were calculated for
268 baseline gastric volume and top layer characteristics.

269 Differences in gastric top layer volume over time were tested with the use of a
270 generalized linear mixed model using a zero-inflated Poisson distribution, testing for
271 main effects of time, treatment, and treatment*time interactions. Baseline gastric
272 volume was included as a covariate, due to its effect on digestion (Camps et al., 2021).
273 Differences in total gastric volume over time were tested using linear mixed models,
274 with time, treatment, and treatment*time interactions as fixed factors and baseline
275 gastric volume as a covariate. Tukey HSD corrected post-hoc t-tests were used to
276 compare individual time points.

277 Differences in plasma concentrations of FFA, glucose, insulin, serum NMR-based
278 metabolites, and subjective ratings over time were tested by using linear mixed models,
279 testing for main effects of time, treatment, and treatment*time interactions. Baseline

280 values were added as covariate. False discovery Rate (FDR) correction was used for
281 the NMR-based metabolites (Storey, 2002).

282 Normality of the data was confirmed with quantile-quantile (QQ) plots of the residuals.

283 For insulin, FFA and prospective consumption a logarithmic transformation was

284 applied to create a normal distribution. All statistical analyses were performed using

285 the R statistical software (version 4.0.2). The significance threshold was set at $p = 0.05$.

286 Data are expressed as mean \pm SE unless stated otherwise.

287 **3 Results**

288 **3.1 *In vitro digestion***

289 To investigate emulsion stability of the EF and CF (**Table 1**) under gastric conditions,
290 *in vitro* digestions were performed under both simulated infant and adult conditions
291 (**Supplementary Figure 3**). Under both simulated infant and adult conditions, the EF
292 displayed an earlier, i.e., at a higher pH, onset of layer formation compared to the CF.
293 In addition, the formed lipid layer in the EF appeared to be more dense compared to
294 the CF.

295

296 **3.2 *In vivo trial***

297 **3.2.1 *Gastric top layer formation***

298 Onset time of the high-fat top layer, maximum top layer volume, and time to maximum
299 top layer volume are described in **Table 2**. The onset of the top layer was 13.4 ± 5.1
300 min earlier for the EF compared to the CF ($p = 0.017$, 26.1 ± 4.4 min, and 39.5 ± 3.3
301 min for the EF and CF respectively) (**Supplementary Figure 4**). When baseline gastric
302 volume was added as covariate the effect became more significant with a mean
303 difference of 13.6 ± 3.6 min ($p = 0.001$). Time to maximum top layer volume was shorter
304 and maximum top layer volume was lower for the EF ($p = 0.022$ and 0.033 ,
305 respectively). Top layer AUC did not differ between treatments ($p = 0.915$).

306 Although the AUC was similar for both formulae, top layer volume over time showed a
307 significant treatment by time interaction ($p < 0.001$) with lower volumes for the EF at
308 all time points except $t = 100$.

309 The individual curves for top layer volume over time can be found in **supplementary**
310 **figure 5**.

311

312 3.2.2 *Total gastric volume*

313 Total gastric volume showed a linear decline over time for both formulae (**Figure 3**),
314 with higher volumes for the EF (treatment effect, mean difference = 15.0 ml, $p < 0.001$).
315 However, treatment by time interaction was not significant ($p = 0.323$). Total gastric
316 volume AUC tended to be lower for the CF ($p = 0.063$).

317

318 3.2.3 *Correlations*

319 Baseline gastric volume correlated with the top layer onset time for both the EF ($r = -$
320 0.82 , $p < 0.001$) and the CF ($r = -0.72$, $p < 0.001$) (**Supplementary Figure 6**). Baseline
321 gastric volume were also correlated with maximum top layer volume ($r = 0.65$ for EF,
322 $p < 0.001$ and 0.46 for CF, $p < 0.001$) and time to maximum top layer ($r = -0.80$ for EF,
323 $p = 0.002$ and $r = -0.71$ for CF, $p = 0.046$).

324

325 3.2.4 *Postprandial blood response*

326 No treatment effects were found for postprandial plasma FFA and glucose ($p = 0.763$
327 and 0.325 , respectively) (**Supplementary Figure 7**). However, plasma insulin
328 concentrations were lower for the EF ($p = 0.040$) (**Figure 4**). No treatment by time
329 interaction was observed for these three parameters ($p = 0.835$, 0.881 , and 0.547 ,
330 respectively).

331 Treatment effects were found for 63 of the NMR-based metabolites (**Supplementary**
332 **Figure 8**). Differences were mainly found in cholesterol- and phospholipid-related
333 metabolites, which all had lower levels for the CF. None of the metabolites showed a
334 significant treatment by time interaction.

336 *3.2.5 Appetite & nausea ratings*

337 There were no significant treatment effects for hunger, fullness, prospective
338 consumption, and thirst ($p = 0.751, 0.340, 0.706,$ and 0.757 respectively). Desire to eat
339 tended to be lower for the CF ($p = 0.078$). Nausea was overall rated lower for the EF
340 ($p = 0.023$), although all scores remained around zero. None of the ratings showed a
341 significant interaction between treatment and time ($p = 0.820, 0.575, 0.257, 0.662,$
342 $0.718,$ and 0.890 respectively). The graphs are shown in **Supplementary Figure 9**.

343 **4 Discussion**

344 This study compared gastric top layer formation, gastric emptying, and post-prandial
345 plasma metabolomics of an experimental minimally processed IF containing MFGM
346 with that of a control IF. Onset of the high-fat gastric top layer was earlier for the EF
347 and top layer volume was lower compared to the CF. For both formulae, total gastric
348 volume emptied almost linear over time, with a higher volume for the EF. No treatment
349 differences were found in post-prandial plasma concentrations of FFA, insulin, and
350 glucose. NMR-based metabolomics mainly showed differences in postprandial serum
351 phospholipid and cholesterol related metabolomics, with higher concentrations for the
352 EF.

353 Gastric top layer volume over time was lower for the EF and the layer was formed ~13
354 minutes sooner for the EF. This is in line with the observations in the *in vitro* digestion,
355 which demonstrated layer formation at higher pH (i.e., in an earlier phase of gastric
356 digestion) for the EF under both simulated infant and adult conditions. The lower gastric
357 volumes for the EF are likely the result of the earlier top layer formation, resulting in a
358 more even distribution over time. This earlier onset of emulsion destabilization is in line
359 with our hypothesis and can most likely be explained by the mild processing. As a
360 result of the lower heating compared to the CF, fewer whey proteins are denatured and
361 complexed with caseins at the fat globule interface. This in turn causes the emulsion
362 to be less stable under gastric conditions as caseins, resulting from pepsin-mediated
363 hydrolysis, will coagulate quickly under gastric conditions (Anema et al., 2004; Fox et
364 al., 2015; Guyomarc'h et al., 2009; Raikos, 2010). In the CF top layer formation
365 occurred later, most likely as a result of a slower hydrolysis of the casein-whey complex
366 that stabilizes the emulsion. A faster gastric lipid layer formation may potentially better
367 mimic the phased-release of nutrients in the intestine overall as observed with
368 breastfeeding where the gastrointestinal tract will initially be exposed to a relative low-

369 fat fraction (foremilk) followed by exposure to a relatively high-fat fraction (hindmilk)
370 (Daly et al., 1993; Forsum & Lonnerdal, 1979; Hytten, 1954; Kent et al., 2006; Saarela
371 et al., 2005).

372 For both formulae, gastric emptying over time followed a linear pattern, with lower
373 gastric volumes for the CF after 30 min. However, individual timepoints did not show a
374 significant difference and the AUC did not significantly differ between treatments,
375 indicating that the effect is small. Moreover, this small effect also did not result in
376 significant differences for FFA and glucose. Therefore, it should be questioned whether
377 this small treatment difference in gastric volume is clinically relevant.

378 Plasma insulin showed a higher initial postprandial peak for the CF. As total levels of
379 carbohydrates were only slightly higher in the EF, these observations are likely
380 explained by the insulinotropic effect of proteins (Rietman et al., 2014). Most likely, the
381 slower destabilization of the emulsion for the CF led to a more protein-rich fraction
382 initially reaching the intestine compared to the EF, thereby initially promoting insulin
383 secretion more prominent. Surprisingly few data is available with respect to post-
384 prandial insulin responses after consumption of human milk, likely resulting from
385 ethical challenges of (serial) blood sampling in infants. Interestingly, an adult study
386 comparing, amongst others, human milk with bovine milk, human milk displayed the
387 lowest insulin response (Gunnerud et al., 2012).

388 As identified previously by Camps et al. (2021), baseline (fasted) gastric juice volume
389 was correlated with top layer formation. Higher baseline gastric juice volume was
390 strongly associated with an earlier onset of the top layer. This is likely explained by its
391 low pH and the presence of pepsin. When there is more gastric juice, the gastric pH
392 will initially be lower and more pepsin will be available, resulting in an overall quicker
393 coalescence and creaming. Relative to Camps et al. (2021) (200 ml), a larger ingestion
394 volume (600 ml) was chosen to minimize the influence of baseline gastric juice.

395 Nevertheless, a strong correlation between fasting gastric juice volume and
396 subsequent top layer formation was also observed in the current study. This
397 underscores the relevance of taking baseline gastric content volumes into
398 consideration, also because these show large day-to-day and intra-individual variability
399 (Grimm et al., 2018). Interestingly, one of the participants did not show any top layer
400 formation for both formulae. Although this participant did not show abnormal baseline
401 gastric juice volumes, it could have been that this participant had low pepsin activity. It
402 is known that there are large interindividual variabilities in pepsin activity (Walther et
403 al., 2019).

404 Post-prandial concentrations of phospholipid and cholesterol related metabolites were
405 higher for the EF. Most likely, this can be explained by the addition of MFGM-enriched
406 whey to this formula, which, as compared to normal whey, is enriched with
407 phospholipids and cholesterol (Venkat et al., 2022). No treatment differences were
408 found in post-prandial plasma FFA and glucose concentrations. This is likely due to
409 the overall similar nutritional composition of the two formulae concerning fat and
410 carbohydrate source. In addition, especially for the FFA, the measurement time was
411 relatively short in the current study. Plasma FFA concentrations rise during fasting and
412 drop as soon as food is ingested. This drop happens due to the meal-induced secretion
413 of insulin, which suppresses intracellular lipase and thereby lowers the release of FFA
414 into the circulation (Albrink & Neuwirth, 1960; Fielding, 2011; Lairon et al., 2007). This
415 is in line with the plasma FFA concentration changes found in this study, which showed
416 an initial decrease after ingestion of the IF. Therefore, it is often recommended to
417 measure FFA concentrations for a longer period. For example, Lairon et al. (2007)
418 recommend a period of 6-8 h.

419 One of the limitations of the study is the use of adults instead of infants because of
420 ethical considerations associated with MRI. The gastrointestinal tract of infants is not

421 yet completely developed and therefore differs from that of adults. Amongst others, the
422 minimum gastric pH of infants is higher compared to that of adults (3 - 4 compared to
423 0.5 - 2.3) and less pepsin is secreted (Poquet & Wooster, 2016). Since the pH
424 influences the activity of pepsin and gastric lipase, this impacts digestive processes in
425 the stomach, among which the coalescence and creaming into a high-fat top layer. The
426 higher pH in infant gastric conditions, would most likely result in a slower destabilization
427 of the emulsion. However, as both formulae were measured in adults, it is expected
428 that the differences between treatments will remain similar. Moreover, in the semi-
429 dynamic *in vitro* digestion model the difference between both formulae were observed
430 under both infant and adult digestion conditions. Combined, these results thus suggest
431 that the differences in coalescence and creaming that were observed will also occur in
432 infants.

433 MRI usually requires participants to be scanned in a supine position. Studies have
434 shown that sitting in an upright position accelerates gastric emptying compared to a
435 supine position (Jones et al., 2006; Spiegel et al., 2000). However, these effects are
436 small and since participants were scanned in the same position for both treatments,
437 we expect the differences between treatments to remain similar. Moreover, from the
438 perspective of infant nutrition a supine position after feeding is realistic.

439 In conclusion, this study shows that an experimental minimally processed infant
440 formula containing MFGM-enriched whey had an accelerated gastric creaming as
441 compared to a control formula. No effects on overall nutrient absorption over time were
442 found, except for the cholesterol- and phospholipid-related metabolites which can most
443 likely be attributed to the presence of MFGM-enriched whey in the experimental
444 formula. Although the overall physiological consequences remain to be identified, a
445 faster high-fat gastric top layer formation of infant formulae may potentially better mimic
446 the phased-release of nutrients in the intestine as observed with breastfeeding where

447 the gastrointestinal tract will initially be exposed to a relative low-fat fraction (foremilk)
448 followed by exposure to a relatively high-fat fraction (hindmilk).

449 **Author contributions and acknowledgements**

450 PS, RT and TL: conceptualization and methodology; JR: investigation; JR: data
451 curation; JR: formal analysis; JR: Writing - Original Draft; RT, TL and PS: Writing -
452 Review & Editing; JR: visualization; PS had primary responsibility for final content. All
453 authors read and approved the final manuscript. This study was funded by
454 FrieslandCampina and Reina Tjoelker and Tim Lambers are employed by
455 FrieslandCampina. All other authors declare no conflicts of interest. We thank Romy
456 de Haas, Natacha Benbernou, Caya Lindner and Joris de Jong for assisting with data
457 collection collection and João Paulo for advice on statistical analysis. The use of the
458 3T MRI was made possible by WUR Shared Research Facilities.

References

- 459 Albrink, M. J., & Neuwirth, R. S. (1960). Effect of previous starvation on the response of plasma lipids and free
460 fatty acids to a fat meal. *The Journal of Clinical Investigation*, 39(3), 441-446.
- 461 Anema, S. G., Lowe, E. K., & Li, Y. (2004). Effect of pH on the viscosity of heated reconstituted skim milk.
462 *International Dairy Journal*, 14(6), 541-548.
- 463 Bourlieu, C., Ménard, O., Bouzerzour, K., Mandalari, G., Macierzanka, A., Mackie, A. R., & Dupont, D. (2014).
464 Specificity of infant digestive conditions: some clues for developing relevant in vitro models. *Critical*
465 *reviews in food science and nutrition*, 54(11), 1427-1457.
- 466 Bourlieu, C., Ménard, O., De La Chevasnerie, A., Sams, L., Rousseau, F., Madec, M.-N., Robert, B., Deglaire, A.,
467 Pezennec, S., Bouhallab, S., Carrière, F., & Dupont, D. (2015). The structure of infant formulas impacts
468 their lipolysis, proteolysis and disintegration during in vitro gastric digestion. *Food chemistry*, 182, 224-
469 235. <https://doi.org/https://doi.org/10.1016/j.foodchem.2015.03.001>
- 470 Camps, G., Van Eijnatten, E. J., Van Lieshout, G. A., Lambers, T. T., & Smeets, P. A. (2021). Gastric Emptying
471 and Intra-gastric Behavior of Breast Milk and Infant Formula in Lactating Mothers. *The Journal of nutrition*,
472 151(12), 3718-3724.
- 473 Chai, C., Oh, S., & Imm, J. Y. (2022). Roles of Milk Fat Globule Membrane on Fat Digestion and Infant Nutrition.
474 *Food Sci Anim Resour*, 42(3), 351-371. <https://doi.org/10.5851/kosfa.2022.e11>
- 475 Daly, S., Di Rosso, A., Owens, R. A., & Hartmann, P. E. (1993). Degree of breast emptying explains changes in
476 the fat content, but not fatty acid composition, of human milk. *Experimental Physiology: Translation and*
477 *Integration*, 78(6), 741-755.
- 478 Dewey, K. (2003). Guiding principles for complementary feeding of the breastfed child.
- 479 Fielding, B. (2011). Tracing the fate of dietary fatty acids: metabolic studies of postprandial lipaemia in human
480 subjects. *Proceedings of the Nutrition Society*, 70(3), 342-350.
- 481 Forsum, E., & Lonnerdal, B. (1979). Variation in the contents of nutrients of breast milk during one feeding.
482 *Nutrition reports international*, 19(6), 815-820.
- 483 Fox, P., Uniacke-Lowe, T., McSweeney, P., O'Mahony, J., Fox, P., Uniacke-Lowe, T., McSweeney, P., & O'Mahony,
484 J. (2015). Heat-induced changes in milk. *Dairy chemistry and biochemistry*, 345-375.
- 485 Gonenne, J., Esfandyari, T., Camilleri, M., Burton, D., Stephens, D., Baxter, K., Zinsmeister, A., & Bharucha, A.
486 E. (2006). Effect of female sex hormone supplementation and withdrawal on gastrointestinal and colonic
487 transit in postmenopausal women. *Neurogastroenterology & Motility*, 18(10), 911-918.
- 488 Grimm, M., Koziol, M., Kühn, J.-P., & Weitschies, W. (2018). Interindividual and intraindividual variability of
489 fasted state gastric fluid volume and gastric emptying of water. *European Journal of Pharmaceutics and*
490 *Biopharmaceutics*, 127, 309-317. <https://doi.org/https://doi.org/10.1016/j.ejpb.2018.03.002>
- 491 Gunnerud, U., Holst, J. J., Östman, E., & Björck, I. (2012). The glycemic, insulinemic and plasma amino acid
492 responses to equi-carbohydrate milk meals, a pilot- study of bovine and human milk. *Nutrition Journal*,
493 11(1), 83. <https://doi.org/10.1186/1475-2891-11-83>
- 494 Guyomarc'h, F., Nono, M., Nicolai, T., & Durand, D. (2009). Heat-induced aggregation of whey proteins in the
495 presence of κ-casein or sodium caseinate. *Food Hydrocolloids*, 23(4), 1103-1110.
- 496 Harder, T., Bergmann, R., Kallischnigg, G., & Plagemann, A. (2005). Duration of breastfeeding and risk of
497 overweight: a meta-analysis. *American journal of epidemiology*, 162(5), 397-403.
- 498 Hytten, F. (1954). Clinical and Chemical Studies in Human Lactation.—I, II, and III. *British Medical Journal*,
499 1(4855), 175.
- 500 Italianer, M. F., Naninck, E. F., Roelants, J. A., van der Horst, G. T., Reiss, I. K., Goudoever, J. B. v., Joosten, K.
501 F., Chaves, I., & Vermeulen, M. J. (2020). Circadian variation in human milk composition, a systematic
502 review. *Nutrients*, 12(8), 2328.
- 503 Jones, K. L., O'Donovan, D., Horowitz, M., Russo, A., Lei, Y., & Hausken, T. (2006). Effects of posture on gastric
504 emptying, transpyloric flow, and hunger after a glucose drink in healthy humans. *Digestive diseases and*
505 *sciences*, 51(8), 1331-1338.
- 506 Kent, J. C., Mitoulas, L. R., Cregan, M. D., Ramsay, D. T., Doherty, D. A., & Hartmann, P. E. (2006). Volume and
507 frequency of breastfeedings and fat content of breast milk throughout the day. *Pediatrics*, 117(3), e387-
508 e395.
- 509 Khan, S., Hepworth, A. R., Prime, D. K., Lai, C. T., Trengove, N. J., & Hartmann, P. E. (2013). Variation in fat,
510 lactose, and protein composition in breast milk over 24 hours: associations with infant feeding patterns.
511 *Journal of Human Lactation*, 29(1), 81-89.
- 512 Koo, T. K., & Li, M. Y. (2016). A guideline of selecting and reporting intraclass correlation coefficients for reliability
513 research. *Journal of chiropractic medicine*, 15(2), 155-163.
- 514 Kunz, P., Feinle-Bisset, C., Faas, H., Boesiger, P., Fried, M., Steingötter, A., & Schwizer, W. (2005). Effect of
515 ingestion order of the fat component of a solid meal on intra-gastric fat distribution and gastric emptying
516 assessed by MRI. *Journal of Magnetic Resonance Imaging: An Official Journal of the International Society*
517 *for Magnetic Resonance in Medicine*, 21(4), 383-390.
- 518 Lairon, D., Lopez-Miranda, J., & Williams, C. (2007). Methodology for studying postprandial lipid metabolism.
519 *European Journal of Clinical Nutrition*, 61(10), 1145-1161.
- 520 Lajterer, C., Levi, C. S., & Lesmes, U. (2022). An in vitro digestion model accounting for sex differences in gastro-
521 intestinal functions and its application to study differential protein digestibility. *Food Hydrocolloids*, 132,
522 107850.
- 523 Lambers, T. T., Wissing, J., & Roggekamp, J. (2023). In vitro gastric digestion of an experimental infant formula
524 containing both intact and hydrolyzed milk proteins. *Journal of dairy science*.
- 525 Lopez, C. (2020). Dairy Lipids in Infant Formulae to Reduce the Gap with Breast Milk Fat Globules: Nutritional
526 and Health Benefits Associated to Opportunities. *Dairy Fat Products and Functionality: Fundamental*
527 *Science and Technology*, 355-398.
- 528 McCarthy, N. A., Kelly, A. L., O'Mahony, J. A., Hickey, D. K., Chaurin, V., & Fenelon, M. A. (2012). Effect of protein
529 content on emulsion stability of a model infant formula. *International Dairy Journal*, 25(2), 80-86.

530 Meyer, R., Foong, R.-X. M., Thapar, N., Kritas, S., & Shah, N. (2015). Systematic review of the impact of feed
531 protein type and degree of hydrolysis on gastric emptying in children. *BMC gastroenterology*, *15*(1), 1-
532 10.

533 Mulet-Cabero, A.-I., Mackie, A. R., Wilde, P. J., Fenelon, M. A., & Brodkorb, A. (2019). Structural mechanism and
534 kinetics of in vitro gastric digestion are affected by process-induced changes in bovine milk. *Food*
535 *Hydrocolloids*, *86*, 172-183.

536 Noble, B., Clark, D., Meldrum, M., ten Have, H., Seymour, J., Winslow, M., & Paz, S. (2005). The measurement
537 of pain, 1945–2000. *Journal of Pain and Symptom Management*, *29*(1), 14-21.
538 <https://doi.org/https://doi.org/10.1016/j.jpainsymman.2004.08.007>

539 Perez-Escamilla, R., Cohen, R. J., Brown, K. H., Rivera, L. L., Canahuati, J., & Dewey, K. G. (1995). Maternal
540 anthropometric status and lactation performance in a low-income Honduran population: evidence for the
541 role of infants. *The American journal of clinical nutrition*, *61*(3), 528-534.

542 Poquet, L., & Wooster, T. J. (2016). Infant digestion physiology and the relevance of in vitro biochemical models
543 to test infant formula lipid digestion. *Molecular nutrition & food research*, *60*(8), 1876-1895.

544 Raikos, V. (2010). Effect of heat treatment on milk protein functionality at emulsion interfaces. A review. *Food*
545 *Hydrocolloids*, *24*(4), 259-265.

546 Rietman, A., Schwarz, J., Tomé, D., Kok, F. J., & Mensink, M. (2014). High dietary protein intake, reducing or
547 eliciting insulin resistance? *European Journal of Clinical Nutrition*, *68*(9), 973-979.

548 Saarela, T., Kokkonen, J., & Koivisto, M. (2005). Macronutrient and energy contents of human milk fractions
549 during the first six months of lactation. *Acta Paediatrica*, *94*(9), 1176-1181.
550 <https://doi.org/https://doi.org/10.1111/j.1651-2227.2005.tb02070.x>

551 Smeets, P. A., Deng, R., van Eijnatten, E. J., & Mayar, M. (2021). Monitoring food digestion with magnetic
552 resonance techniques. *Proceedings of the Nutrition Society*, 1-11.

553 Soldin, O. P., & Mattison, D. R. (2009). Sex differences in pharmacokinetics and pharmacodynamics. *Clinical*
554 *pharmacokinetics*, *48*(3), 143-157.

555 Spiegel, T. A., Fried, H., Hubert, C. D., Peikin, S. R., Siegel, J. A., & Zeiger, L. S. (2000). Effects of posture on
556 gastric emptying and satiety ratings after a nutritive liquid and solid meal. *American Journal of*
557 *Physiology-Regulatory, Integrative and Comparative Physiology*, *279*(2), R684-R694.

558 Storey, J. D. (2002). A direct approach to false discovery rates. *Journal of the Royal Statistical Society Series B:*
559 *Statistical Methodology*, *64*(3), 479-498.

560 Van Den Driessche, M., Peeters, K., Marien, P., Ghoos, Y., Devlieger, H., & Veereman-Wauters, G. (1999). Gastric
561 emptying in formula-fed and breast-fed infants measured with the ¹³C-octanoic acid breath test. *Journal*
562 *of pediatric gastroenterology and nutrition*, *29*(1), 46-51.

563 Venkat, M., Chia, L. W., & Lambers, T. T. (2022). Milk polar lipids composition and functionality: A systematic
564 review. *Critical reviews in food science and nutrition*, 1-45.

565 Victora, C. G., Bahl, R., Barros, A. J., França, G. V., Horton, S., Krasevec, J., Murch, S., Sankar, M. J., Walker,
566 N., & Rollins, N. C. (2016). Breastfeeding in the 21st century: epidemiology, mechanisms, and lifelong
567 effect. *The lancet*, *387*(10017), 475-490.

568 Walther, B., Lett, A. M., Bordoni, A., Tomás-Cobos, L., Nieto, J. A., Dupont, D., Danesi, F., Shahar, D. R., Echaniz,
569 A., & Re, R. (2019). GutSelf: Interindividual variability in the processing of dietary compounds by the
570 human gastrointestinal tract. *Molecular nutrition & food research*, *63*(21), 1900677.

571 Wang, X., Roy, D., Acevedo-Fani, A., Ye, A., Pundir, S., & Singh, H. (2023). Challenges in simulating the
572 biochemical environment of the infant stomach to assess the gastric digestion of infant formulae. *Current*
573 *Opinion in Food Science*, 100984.

574 Weng, S. F., Redsell, S. A., Swift, J. A., Yang, M., & Glazebrook, C. P. (2012). Systematic review and meta-
575 analyses of risk factors for childhood overweight identifiable during infancy. *Archives of disease in*
576 *childhood*, *97*(12), 1019-1026.

577 WHO. (2003). *Global strategy for infant and young child feeding*. World Health Organization.

578 Würtz, P., Kangas, A. J., Soininen, P., Lawlor, D. A., Davey Smith, G., & Ala-Korpela, M. (2017). Quantitative
579 Serum Nuclear Magnetic Resonance Metabolomics in Large-Scale Epidemiology: A Primer on -Omic
580 Technologies. *American journal of epidemiology*, *186*(9), 1084-1096.
581 <https://doi.org/10.1093/aje/kwx016>

582 Ye, A., Wang, X., Lin, Q., Han, J., & Singh, H. (2020). Dynamic gastric stability and in vitro lipid digestion of
583 whey-protein-stabilised emulsions: Effect of heat treatment. *Food chemistry*, *318*, 126463.

584 **Table and figure captions**

585 Table 1. Nutrient composition of the two formulae.

586

587 Figure 1. Overview of a test session.

588

589 Figure 2. Illustration of a stomach MRI time series from one participant with top layer
590 volume (blue) and total gastric volume (light red) delineated for the control IF and
591 experimental IF.

592

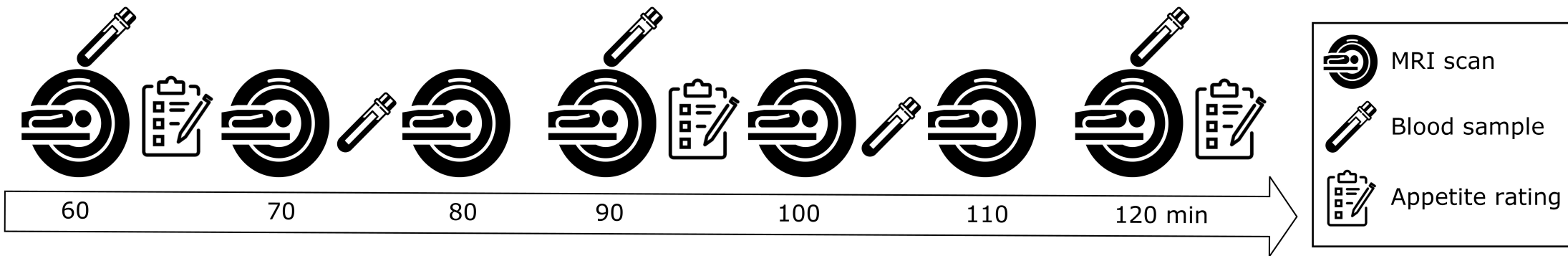
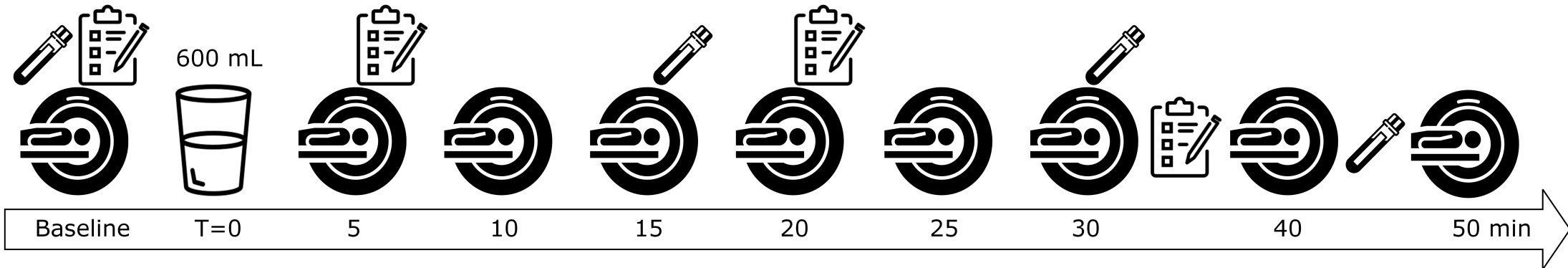
593 Table 2. Differences in top layer formation between the two formulae (mean \pm SE).

594

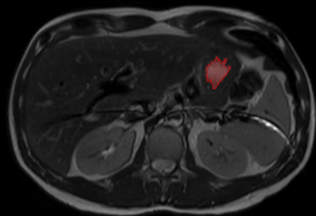
595 Figure 3. Mean \pm SE total gastric volume over time of the two formulae.

596

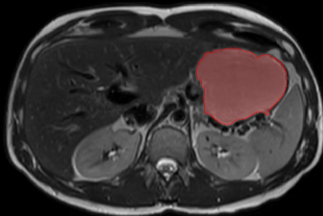
597 Figure 4. Mean \pm SE plasma insulin concentrations over time after ingestion of the
598 formulae.



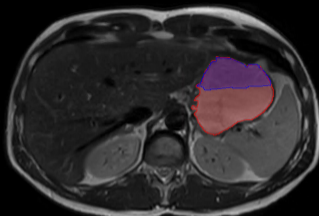
Control IF



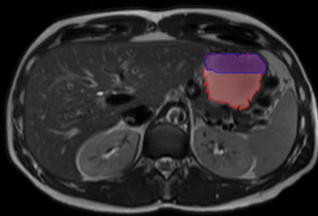
Baseline



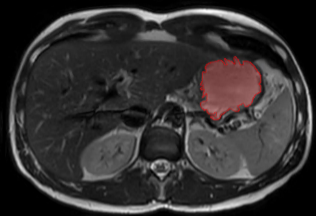
t = 30



t = 60

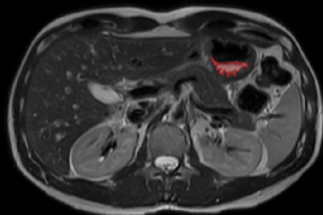


t = 90

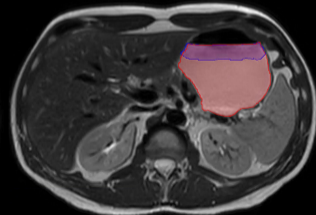


t = 120

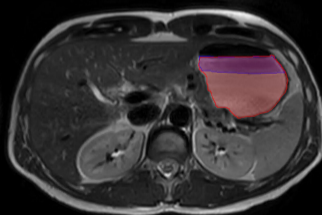
Experimental IF



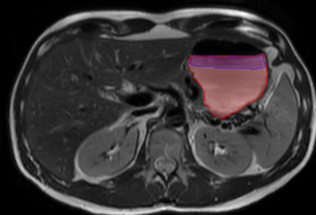
Baseline



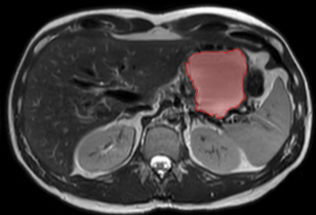
t = 30



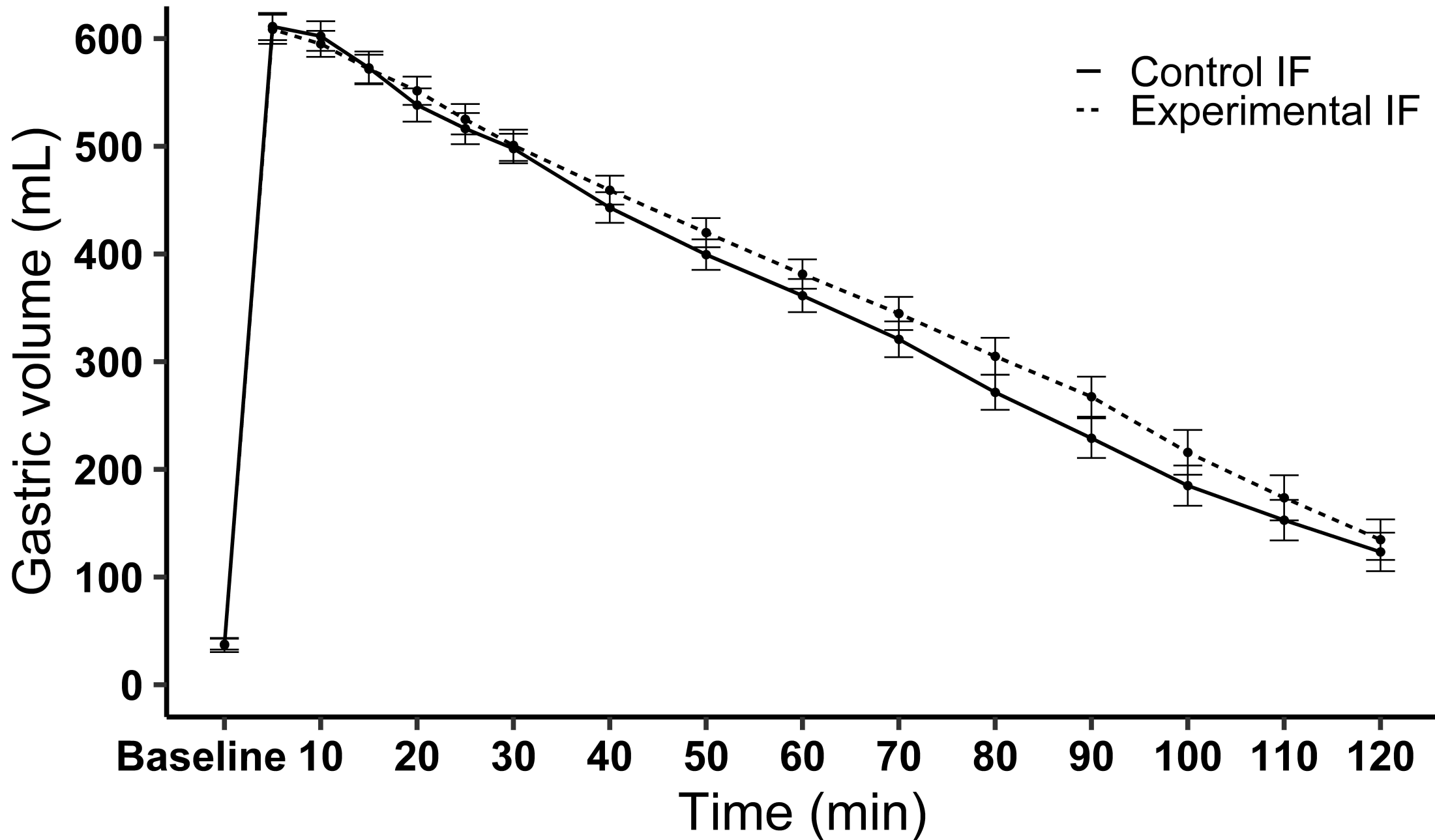
t = 60

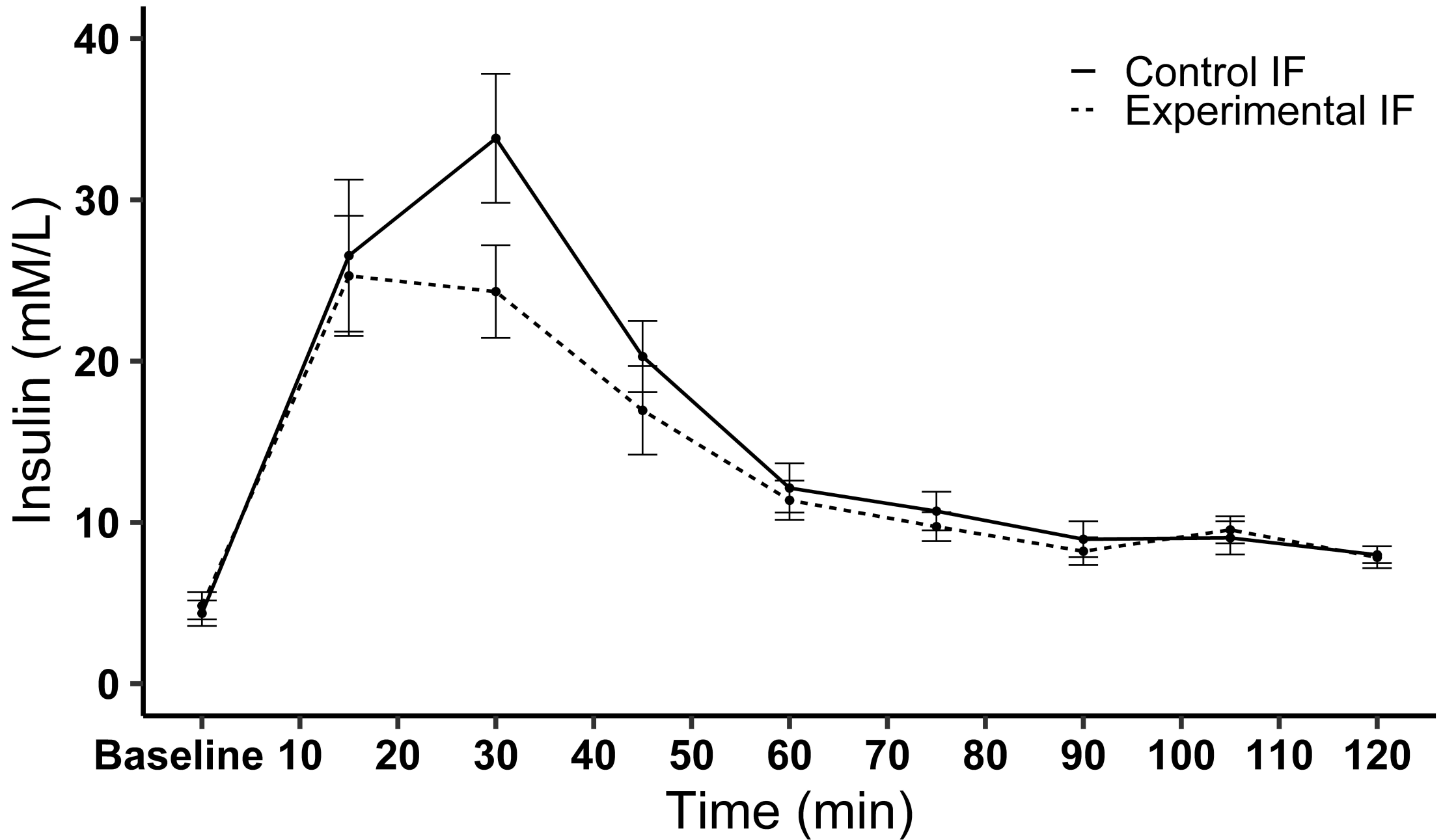


t = 90



t = 120





Composition per 100 ml	Control	Experimental
Energy (kcal (kJ))	66 (276)	67 (280)
Protein^[N*6.25] (g)	1.4	1.3
- Casein^[N*6.25] (g)	0.5	0.5
- Whey protein^[N*6.25] (g)	0.9	0.8
Fat (g)	3.5	3.4
Carbohydrate (g)	7.0	7.3
Galacto-oligosaccharides (g)	0.4	0.4

Characteristic	Control	Experimental	Mean difference (95% CI)	P-value
Onset time (min)	39.5 ± 4.4	26.1 ± 3.3	13.4 (2.7 – 24.1)	0.017
Maximum top layer volume (ml)	203.4 ± 23.5	154.6 ± 10.9	49.0 (4.4 – 93.6)	0.033
Time to maximum top layer volume (min)	41.3 ± 4.7	27.4 ± 3.5	13.9 (2.3 – 25.7)	0.022
AUC (ml*min)	5163 ± 642	5090 ± 444	72.7 (-1343 – 1488)	0.915