

1 **Inflammation and autoimmunity are interrelated in patients with sickle cell disease at a**
2 **steady-state condition: implications for vaso-occlusive crisis, pain, and sensory**
3 **sensitivity**

4
5 Wei Li^{1*}, Andrew Q Pucka², Candice Debats², Brandon Reyes², Fahim Syed¹, Andrew R
6 O'Brien³, Rakesh Mehta³, Naveen Manchanda³, Seethal A Jacob⁴, Brandon M Hardesty⁵, Anne
7 Greist^{3,5}, Steven E Harte⁶, Richard E Harris^{6,7}, Qigui Yu^{1*}, Ying Wang^{2,3*}

8
9 ¹Department of Microbiology and Immunology, Indiana University School of Medicine,
10 Indianapolis, IN 46202

11 ²Department of Anesthesia, Stark Neurosciences Research Institute, Indiana University School
12 of Medicine, Indianapolis, IN 46202

13 ³Division of Hematology/Oncology, Department of Medicine, Indiana University School of
14 Medicine, Indianapolis, IN 46202

15 ⁴Center for Pediatric and Adolescent Comparative Effectiveness Research, Indiana University
16 School of Medicine, Indianapolis, IN 46202

17 ⁵Indiana Hemophilia and Thrombosis Center, Indianapolis, IN 46260

18 ⁶Chronic Pain and Fatigue Research Center, Department of Anesthesiology, University of
19 Michigan Medical School, Ann Arbor, MI 48106

20 ⁷Susan Samueli Integrative Health Institute, and Department of Anesthesiology and
21 Perioperative Care, School of Medicine, University of California at Irvine, Irvine, CA 92617

22
23 ***Corresponding authors**

24 Address correspondence to Dr. Ying Wang (ywa12@iu.edu), Department of Anesthesia, Indiana
25 University School of Medicine, Stark Neuroscience Building, Rm# 514E, 320 West 15th Street,
26 Indianapolis, IN 46202, Tel: 317-278-5045; Dr. Wei Li (wl1@iupui.edu) or Dr. Qigui Yu

27 (andyu@iupui.edu), Department of Microbiology and Immunology, Indiana University School of
28 Medicine, Medical Science Building, MS267, 635 Barnhill Drive, Indianapolis, IN 46202, Tel:
29 317-274-2391.

30

31 **Key words:** Sickle cell disease, inflammation, autoantibody, aggregate, steady-state condition,
32 vaso-occlusive crisis, pain sensitivity

33

34 **Running title:** Inflammation, autoantibody, RBC-leukocyte aggregation, and vaso-occlusive
35 crisis in SCD participants

36

37 **Abbreviations:** $\alpha 4\beta 1$, alpha-4 beta-1; **ANA**, anti-nuclear autoantibody; **CDT**, cold detection
38 threshold; **CPT**, cold pain threshold; **CPM**, conditioned pain modulation; **CRP**, C-reactive
39 protein; **DC**, dendritic cell; **EC**, endothelial cell; **GPA**, glycoporphin A; **HADS**, Hospital Anxiety
40 and Depression Scale; **HC**, healthy control; **HCT**, hematocrit; **HDT**, heat detection threshold;
41 **Hgb**, hemoglobin; **HPT**, heat pain threshold; **LIF**, leukemia inhibitory factor; **Lu/BCAM**,
42 lutheran/basal cell adhesion molecule; **MCV**, mean corpuscular volume; **MCH**, mean
43 corpuscular hemoglobin; **MDT**, mechanical detection threshold; **MFI**, median fluorescent
44 intensity; **MPO**, myeloperoxidase; **MPT**, mechanical pain threshold; **MTS**, mechanical temporal
45 summation; **PBMC**, peripheral blood mononuclear cell; **PedsQL**, Pediatric Quality of Life
46 Inventory; **PMN**, polymorphonuclear neutrophil; **PPT**, pressure pain threshold; **PPTol**, pressure
47 pain tolerance; **PROMIS**, Patient-Reported Outcomes Measurement Information System;
48 **PROMs**, patient-reported outcome measures; **QoL**: quality of life; **QST**, quantitative sensory
49 testing; **RBC**, red blood cell; **RDW**, red cell distribution width; **SCD**, sickle cell disease; **SLE**,
50 systemic lupus erythematosus; **SSA/Ro60**, Sjögren's Syndrome-related antigen A/Ro60 kDa;
51 **StSt**, steady-state condition; **TSLP**, thymic stromal lymphopoietin; **TSP**, temporal summation of
52 pain; **VOC**, vaso-occlusive crisis; **WBC**, white blood cell.

53

54 **Conflict of interest**

55 The authors declare no conflicts of interest that pertain to this manuscript.

56

57 **Abstract**

58 This study aimed to comprehensively analyze inflammatory and autoimmune
59 characteristics of patients with sickle cell disease (SCD) at a steady-state condition (StSt)
60 compared to healthy controls (HCs) to explore the pathogenesis of StSt and its impact on
61 patients' well-being. The study cohort consisted of 40 StSt participants and 23 HCs enrolled
62 between July 2021 and April 2023. StSt participants showed elevated white blood cell (WBC)
63 counts and altered hematological measurements when compared to HCs. A multiplex
64 immunoassay was used to profile 80 inflammatory cytokines/chemokines/growth factors in
65 plasma samples from these SCD participants and HCs. Significantly higher plasma levels of 37
66 analytes were observed in SCD participants, with HGF, IL-18, IP-10, and MCP-2 being among
67 the most significantly affected analytes. Additionally, autoantibody profiles were also altered,
68 with elevated levels of anti-SSA/Ro60, anti-Ribosomal P, anti-Myeloperoxidase (MPO), and
69 anti-PM/Scl-100 observed in SCD participants. Flow cytometric analysis revealed higher rates of
70 red blood cell (RBC)/reticulocyte-leukocyte aggregation in SCD participants, predominantly
71 involving monocytes. Notably, correlation analysis identified associations between inflammatory
72 mediator levels, autoantibodies, RBC/reticulocyte-leukocyte aggregation, clinical lab test results,
73 and pain crisis/sensitivity, shedding light on the intricate interactions between these factors. The
74 findings underscore the potential significance of specific biomarkers and therapeutic targets that
75 may hold promise for future investigations and clinical interventions tailored to the unique
76 challenges posed by SCD. In addition, the correlations between vaso-occlusive crisis
77 (VOC)/pain/sensory sensitivity and inflammation/immune dysregulation offer valuable insights
78 into the pathogenesis of SCD and may lead to more targeted and effective therapeutic
79 strategies.

80

81 **Introduction**

82 Sickle cell disease (SCD) is a lifelong illness that affects multiple organ systems and can
83 cause a range of complications, including acute and chronic pain, anemia, stroke, pulmonary
84 hypertension, and organ damage (1, 2). The clinical manifestations of SCD can be broadly
85 categorized into two phases: the steady-state (StSt) phase, characterized by mild to no
86 symptoms associated with chronic hemolysis and persistent pain (3), and the severe pain and
87 other clinical complications in the acute hemolytic/vaso-occlusive crisis (VOC) phase (4, 5). The
88 acute VOC phase is marked by the sudden onset of severe pain, possibly accompanied with
89 acute chest syndrome and stroke due to the blockage of small blood vessels by sickle-shaped
90 red blood cells (RBCs). Individuals with SCD requiring high doses of opioids to manage VOC
91 confront a series of substantial risks, such as an increased vulnerability to overdose and
92 mortality, the potential development of opioid-induced hyperalgesia, and a compromised quality
93 of life (QoL). Addressing these challenges becomes paramount, emphasizing the urgent need
94 for evidence-based, effective, and safe pain management therapies tailored specifically for
95 SCD. Indeed, pain is the hallmark of SCD, manifesting anywhere in the body and profoundly
96 impacting patients' QoL (6-8). SCD pain can manifest as acute recurrent painful crises
97 associated with VOCs as well as chronic pain with or without nerve damage (7). The painful
98 crisis, which evolves through four phases—prodromal, initial, established, and resolving—is a
99 leading cause of hospitalization and emergency department treatments in SCD (7).

100 SCD is characterized by the presence of sickle-shaped RBCs with altered biophysical and
101 biochemical properties (9). Unlike normal RBCs, which have a biconcave disc shape for
102 flexibility and deformability, sickle-shaped RBCs lose their ability to deform and navigate
103 through small blood vessels efficiently, leading to blockages and reduced blood flow. To
104 compensate for the RBC loss, bone marrow produces more immature RBCs known as
105 reticulocytes, releasing them into circulation and leading to elevated reticulocyte levels in the

106 blood. In SCD participants, reticulocytes express higher levels of surface adhesion molecules
107 such as Lutheran/basal cell adhesion molecule (Lu/BCAM) and alpha-4 beta-1 ($\alpha 4\beta 1$) integrin
108 (10-15). These adhesion molecules facilitate the binding of reticulocytes to the endothelium
109 lining the blood vessels, causing activation of endothelial cells (ECs) and the release of
110 inflammatory molecules (16-18). Moreover, reticulocytes in SCD interact with circulating
111 leukocytes, including polymorphonuclear neutrophils (PMNs) and monocytes, leading to the
112 formation of aggregates and increasing the occurrence of VOCs (19-21). These interactions are
113 primarily mediated by $\alpha 4\beta 1$ integrin and Lu/BCAM, reinforcing their adhesion to the endothelium
114 (9, 22). *In vitro* studies have demonstrated that sickle-shaped RBCs can also bind to peripheral
115 leukocytes, especially monocytes, via erythroid LW/ICAM-4 and CD44 receptors. These
116 RBC/reticulocyte-leukocyte aggregates interact with ECs, resulting in EC activation (21). Thus,
117 SCD is associated with increased adhesion of RBC/reticulocytes to leukocytes and ECs, which
118 contribute to the complex pathophysiology underlying SCD pain (10-18).

119 Chronic inflammation persists in SCD due to continuous activation of immune cells or
120 autoimmune responses triggered by various factors, such as hemolysis, vaso-occlusion, and
121 sickle-shaped RBC aggregates. Hemolysis is a primary inflammatory trigger in SCD (17).
122 Sickle-shaped RBCs are more fragile and prone to rupture, leading to the chronic release of
123 hemoglobin and other cellular components. Hemoglobin is a potent pro-inflammatory molecule
124 that activates immune cells such as monocytes, macrophages, and dendritic cells (DCs),
125 prompting them to produce pro-inflammatory cytokines such as IL-1 β (23), IL-6 (24), and TNF- α
126 (23). Additionally, heme, an iron-containing component of hemoglobin, can further induce the
127 production of pro-inflammatory cytokines, chemokines, and adhesion molecules by activating
128 NF- κ B and TLR4 signaling pathways, and promote the recruitment of leukocytes and platelets to
129 sites of inflammation, exacerbating the inflammatory response (25). In addition, vaso-occlusion
130 of small blood vessels by sickle-shaped RBCs leads to tissue ischemia and subsequent
131 hypoxia, activating ECs. The activated ECs produce and release pro-inflammatory cytokines

132 and adhesion molecules (26, 27), which recruit lymphocytes to the site of inflammation, further
133 perpetuating the inflammatory response. Furthermore, chronic activation of the coagulation
134 system in SCD participants results in the release of pro-inflammatory mediators such as
135 thrombin, which can activate ECs and promote the recruitment of inflammatory cells. SCD is
136 also associated with oxidative stress, which contributes to inflammation by activating the NF- κ B
137 pathway, leading to the production of pro-inflammatory cytokines and chemokines. Finally, the
138 impact of autoantibodies on inflammation in SCD participants is noteworthy. Chronic hemolysis
139 and cell damage release intracellular components like hemoglobin, heme, and cellular debris
140 into the bloodstream, triggering the production of autoantibodies. These autoantibodies
141 exacerbate inflammation by forming immune complexes that activate pro-inflammatory
142 pathways, recruit immune cells, and contribute to tissue damage. Highlighting the complex
143 pathophysiology that contributes to inflammation in SCD, a recent study quantified serum levels
144 of 27 inflammatory cytokines, chemokine, and growth factors in 27 individuals in StSt, 22
145 individuals in VOC, and 53 healthy individuals (28). The study found that both pro- and anti-
146 inflammatory cytokines are involved in the inflammatory response during SCD, regardless of
147 clinical phase (28). This suggests that the dysregulation of cytokine production and balance may
148 play a role in the disease's pathophysiology.

149 The current study represents the initial phase of an ongoing clinical trial (ClinicalTrials.gov,
150 NCT05045820) focused on investigating the clinical efficacy and neurobiological mechanisms of
151 acupuncture analgesia in SCD participants, for which recruitment is ongoing. The primary
152 objective of the current study was to characterize the pain and the underlying immune and
153 inflammatory abnormalities in SCD participants. To achieve this objective, we examined plasma
154 levels of inflammatory cytokines, chemokines, growth factors, soluble receptors, and effector
155 molecules, as well as the profiles of autoantibodies and the aggregation between
156 RBCs/reticulocytes and leukocytes. Moreover, we investigated the association between these
157 analytes and VOCs, patient reported pain- and QoL-related outcomes, and sensory sensitivity.

158 Our long-term goal is to identify potential mechanisms and therapeutic targets in SCD, gaining
159 an improved understanding of the mechanisms behind acupuncture intervention.

160

161 **Materials and Methods**

162

163 **Study participants**

164 This work constitutes an initial part of an ongoing randomized clinical trial in SCD that
165 commenced on June 29, 2021, and is scheduled to conclude on May 31, 2026. The primary
166 inclusion criteria for participant enrollment included: 1) has been diagnosed with SCD, 2)
167 experiencing chronic pain within the last 6 months or encountered at least one VOC within the
168 past 12 months, 3) no recent changes in stimulant medication dosage or initiation, 4) willingness
169 to continue their ongoing treatments, and 5) an agreement to limit using any new medications or
170 treatment methods for pain management throughout the study. The major exclusion criteria
171 included: 1) individuals with COVID-19 suspected or confirmed, 2) recent or ongoing pain
172 management using acupuncture or acupuncture-related techniques within the last 6-months,
173 and 3) presence of a concurrent autoimmune or inflammatory disease such as rheumatoid
174 arthritis, systemic lupus erythematosus (SLE), and inflammatory bowel disease. In addition,
175 participants who received a blood transfusion within the 90 days prior to recruitment were
176 excluded for analyses. Age-, gender-, and ethnicity-matched health subjects without SCD were
177 recruited as healthy controls (HCs). Detailed information regarding the inclusion and exclusion
178 criteria can be found on ClinicalTrials.gov (NCT05045820).

179 Peripheral blood samples were collected from 40 SCD participants, comprising 17 males
180 and 23 females, with ages ranging from 14 to 73 years. All participants were Black/African
181 American. SCD participants and HCs were enrolled in this study through Indiana University
182 Health hospitals in Indianapolis, the Indiana Hemophilia & Thrombosis Center, community

183 hospitals, and other resources between July 2021 to April 2023. Peripheral blood was collected
184 at StSt phase in heparin-coated tubes (BD Biosciences, Franklin Lakes, NJ) and subsequently
185 separated into plasma and peripheral blood mononuclear cells (PBMCs). PBMCs were either
186 directly used or cryopreserved in liquid nitrogen until use. Plasma samples were stored at -80°C
187 until use. To establish a comparison, we included PBMC and plasma samples from 23 healthy
188 volunteers, matched in terms of age, sex, and race, to serve as HCs. Detailed demographic and
189 clinical characteristics of both SCD participants and HCs are summarized in Table 1. This study
190 was performed with the approval of the Institutional Review Boards (IRB) at Indiana University
191 School of Medicine, and each participant provided written informed consent during the
192 screening visit prior to the subsequent study procedure.

193

194 **Patient-reported outcome measures (PROMs)**

195 The Patient-Reported Outcomes Measurement Information System (PROMIS)-29
196 Questionnaire was used to evaluate pain intensity and interference, as well as physical function
197 (29). Neuropathic pain symptoms were evaluated using the PainDETECT Questionnaire (higher
198 score indicated higher pain) (30, 31). The Widespread Pain Index was used to evaluate the
199 spatial distribution of pain across the body (higher score indicated higher pain) (32, 33). In
200 addition, depression was evaluated using the Hospital Anxiety and Depression Scale (HADS)
201 (higher score indicated higher depression) (34). Physical function was assessed with PROMIS-
202 29 (higher score indicated more physical dysfunction) (29). Pain-related QoL was evaluated
203 using the Pediatric Quality of Life Inventory (PedsQL) targeting 3 different age groups (13-18,
204 18-25, or 25+ years old), with higher scores representing better QOL (35). The number of
205 patient-reported VOCs in the preceding 12 months was documented (36, 37). The number of
206 days between blood draw and the most recent or future VOCs was recorded as the time
207 intervals after or before VOCs.

208

209 **Quantitative Sensory Testing (QST)**

210 QST is a well-established experimental protocol designed to investigate both ascending
211 excitatory and descending inhibitory aspects of pain processing by assessing an individual's
212 perceptual response to various stimuli (38). QST was performed at up to three different body
213 sites, including the primary testing site(s), which was the area(s) reported as most painful by
214 each patient, along with the dominant-side ventral forearm and/or the dominant-side upper
215 trapezius muscle, as described in previous studies on SCD (38, 39). HCs received primary
216 testing at sites matched with those identified in patients, in addition to testing at the dominant
217 forearm and/or trapezius.

218 Thermal (heat/cold) Detection/Pain Threshold was determined at each testing site using a
219 TCA11 (QST-Lab, Strasbourg, France) with a thermal probe in contact with the subject's skin
220 surface. The thermode temperature was gradually adjusted from a baseline temperature at a
221 controlled rate of 0.5 - 1 °C/s. Subjects indicated the thermal detection threshold (when they first
222 felt the thermal stimulus) and the hot pain threshold (when they first felt pain from the thermal
223 stimulus). The average of three trials for each test was used for analysis.

224 Mechanical Detection Threshold (MDT)/Mechanical Pain Threshold (MPT) were examined
225 using von Frey monofilaments (Stoelting, Wood Dale, IL) and calibrated pinprick stimuli (MRC
226 Systems GmbH, Heidelberg, Germany) respectively. Each von Frey monofilament was applied
227 three times in ascending sequence until the stimulus was detected in at least two out of three
228 trials. The next lower von Frey monofilament was then applied, and the lowest filament to be
229 detected at least twice was considered the detection threshold. The MPT was determined using
230 different pinprick probes applied to the skin surface of each site. Testing started with a
231 stimulation intensity of 8 mN and in each case, the next higher pinprick stimulator was applied
232 until the perception of "touch" changed its quality towards an additional percept of "sharp",

233 “pricking,” or “stinging.” The corresponding intensity represented the first suprathreshold value.
234 Once the first painful stimulus was perceived, the testing direction was changed step-wise
235 towards lower stimulus intensities until the first stimulus perceived as “blunt” and no longer as
236 being “sharp,” “pricking” or “stinging” (subthreshold value). Again, a directional change towards
237 higher intensities occurred and the cycle was repeated until five suprathreshold and five
238 subthreshold values were determined. An inflection point was calculated as the average value
239 of the ten suprathreshold and subthreshold to determine the MPT.

240 Mechanical Temporal Summation (MTS) was assessed using a single 256 mN pinprick
241 (MRC Systems GmbH, Heidelberg, Germany) stimulus applied in triplicate to the skin surface of
242 the selected sites, followed by a series of 10 identical stimuli (1 Hz – metronome-guided). MTS
243 was calculated as the average pain rating from the series of 10 stimuli minus the average pain
244 rating from the three trials with the single stimulus.

245 Pressure Pain Threshold (PPT)/Pressure Pain Tolerance (PPTol) was assessed using a
246 digital, handheld pressure algometer (Algometer II, Somedic SenseLab AB, Norra Mellby,
247 Sweden). The pressure was manually increased at a rate of 50 kPa/s (1000 kPa max) until
248 participants indicated that the sensation of pressure became one of faint pain (PPT) and the
249 maximum pressure pain that the participant can tolerate (PPTol), respectively. The average of 3
250 trials per site was used for analysis.

251 Conditioned Pain Modulation (CPM): Tonic pressure pain was used as the conditioning
252 stimulus delivered via a cuff (Hokanson, Bellevue, WA) attached to the gastrocnemius muscle of
253 the non-dominant leg. Pressure intensities were individually calibrated for each participant to
254 elicit moderate pain (pain rating at 40-60 on a scale of 100) (40, 41). PPT served as the test
255 stimulus and was measured 3 times at the dominant trapezius muscle prior to and during the
256 cuff stimulation. Pain ratings were obtained every 15 s prior to and during cuff stimulation for up
257 to 90s. CPM magnitude was calculated as patient-reported pain ratings during conditioned cuff
258 pressure stimuli.

259 Only QST results on the standard sites (forearm, trapezius) were used for correlation
260 analysis as each SCD participant often had different primary painful site(s).

261

262 **Multiplex immunoassays and enzyme-linked immunosorbent assay (ELISA)**

263 Plasma concentrations of 80 inflammatory human cytokines, chemokines, growth factors,
264 soluble receptors, and effector molecules and 18 human autoantibodies were simultaneously
265 measured using the Immune Response 80-Plex Human ProcartaPlex™ Panel (Cat. #: EPX800-
266 10080-901, Invitrogen, Carlsbad, CA) and the MILLIPLEX MAP Human Autoimmune
267 Autoantibody Panel (HAIAB-10K, MilliporeSigma, Burlington, MA), respectively, according to the
268 manufacturer's instructions. The beads were read on a BioPlex 200 system (Bio-Rad, Hercules,
269 CA). The standards at 4-fold serial dilutions were run on each plate in duplicate and used to
270 calculate the concentrations of human cytokines, chemokines, growth factors, soluble receptors,
271 and effector molecules using the Bio-Plex Manager Software (Bio-Rad, Hercules, CA) as
272 previously reported (42). Plasma samples were diluted 100-fold for the autoantibody multiplex
273 assay, and the levels of the autoantibodies were reported as mean fluorescence intensity (MFI)
274 after background MFI subtraction. The plasma levels of C-reactive protein (CRP) were
275 quantified using human CRP DuoSet ELISA Kit (R&D Systems, Minneapolis, MN) according to
276 the manufacturer's instructions.

277

278 **Flow cytometry**

279 Freshly prepared PBMCs were stained with fluorochrome-conjugated antibodies against
280 human CD45, CD71 (expressed on erythroid precursors), BCAM, and CD235ab (also known as
281 GPA: glycophorin A, the major sialoglycoprotein on RBCs and their precursors) to measure the

282 aggregation between RBC/erythroid precursors and CD45⁺ leukocytes. Cells stained with
283 surface markers were acquired using a BD LSRFortessa flow cytometer (BD Biosciences, San
284 Jose, CA). Flow data were analyzed using FlowJo v10 software (Tree Star, San Carlos, CA).
285 The percentage of CD235ab^{hi} cells among the CD45⁺ leukocytes was defined as the
286 RBC/reticulocyte-leukocyte aggregation rate. The association of RBCs/reticulocytes with
287 lymphocytes or monocytes were determined based on their characteristics of FSC and SSC on
288 flow cytometry, respectively.

289

290 **Statistical analysis**

291 Statistical analysis was performed using GraphPad Prism 10 and SPSS 29. Data were
292 expressed as median and interquartile range (Tables 1-3). Differences between 2 groups were
293 calculated using the Mann-Whitney test for continuous variables (Tables 1-2). χ^2 test was used
294 for comparison between 2 groups for gender distribution (Table 1). Adjusted p values were
295 calculated for the 80-plex and 18-plex analytes using the Holm-Šídák correction for multiple
296 comparisons (Table 3). Inflammatory mediators that were heightened in the SCD participants
297 were used for subsequent Spearman correlation analyses using age, gender and SCD
298 genotype as covariables (Tables 4-6). $p < 0.05$ was considered statistically significant. # $p < 0.06$
299 was considered a clear trend toward significance.

300

301 **Results**

302 **Characteristics of the study cohort: demographics, laboratory exams, patient reported**
303 **outcomes and sensory sensitivity**

304 Demographics and clinical characteristics of participants are summarized in Table 1. SCD
305 participants and HCs showed no significant differences in terms of age and gender distribution.
306 Compared to the HCs, SCD participants exhibited higher numbers of white blood cells (WBCs),
307 reticulocytes, platelets, neutrophils, monocytes, and basophils but reduced RBCs, hemoglobin,
308 and hematocrit (HCT). Additionally, SCD participants displayed elevated levels of mean
309 corpuscular volume (MCV), mean corpuscular hemoglobin (MCH), red cell distribution width
310 (RDW), and the systemic inflammation marker CRP than HCs (Table 1). The differences in the
311 absolute numbers of lymphocytes and eosinophils approached a clear trend toward significance
312 ($p < 0.06$) between the two groups (Table 1).

313 As indicated in Table 2, SCD participants reported increased pain interference and
314 intensity, more painful body sites, reduced physical functioning, and higher levels of depression
315 relative to HCs. Compared to HCs, SCD participants also displayed hypersensitivity to
316 experimental mechanical (MDT, MTP, MTS), cold (CPT), and pressure stimuli (PPT and PPTol),
317 but not hot stimuli (HDT, HPT) as measured by QST (Table 2).

318

319 **SCD participants presented with elevated proinflammatory cytokines, chemokines,**
320 **growth factors, effector molecules, and soluble receptors compared to HCs**

321 SCD participants had significantly higher plasma levels of 35 analytes compared to HCs
322 (Table 3). These elevated analytes encompassed 10 chemokines (CCL21, CCL23, Eotaxin-2,
323 Gal-3, GRO- α , IP-10, MCP-2, MIP-1 α , MIP-1 β , and MIP-3 α), 2 effector molecules (granzymes A
324 and B), 9 growth factors (BAFF, bNGF, G-CSF, GM-CSF, HGF, IL-7, IL-20, IL-34, and LIF), 8
325 pro-inflammatory cytokines (IFN- γ , IL-1 α , IL-2, IL-8, IL-9, IL-18, TNF- α , and TNF- β), 4 type II
326 inflammatory/anti-inflammatory cytokines (IL-4, IL-5, IL-6, and TSLP), and 2 immune modulating
327 soluble receptors (PTX3 and TREM-1) (Table 3 and Supplementary Table 1). In addition, levels
328 of the endothelial cell growth factor VEGF-A and the proinflammatory cytokine IL-17A trended

329 higher in the SCD participants ($p < 0.06$) (Table 3 and Supplementary Table 1). After being
330 corrected for multiple comparisons, 9 out of the 37 altered analytes remained significantly higher
331 in the SCD participants compared to the HCs. These included 4 chemokines (CCL23, Gal-3, IP-
332 10, and MCP-2), 2 growth factors (HGF and IL-34), 2 proinflammatory cytokines (IFN- γ and IL-
333 18), and the soluble receptor PTX3 (Table 3 and Supplementary Table 1). Notably, among
334 these altered analytes, HGF, IL-18, IP-10, and MCP-2 exhibited the most significant
335 upregulation in SCD participants in comparison to HCs (Table 3 and Supplementary Table 2).

336

337 **Both anti-nuclear autoantibodies (ANAs) and non-ANAs were present and elevated in**
338 **SCD participants**

339 Plasma concentrations of autoantibodies against 18 human antigens were simultaneously
340 measured using a multiplex immunoassay. We identified the presence of autoantibodies against
341 4 human antigens, including Sjögren's Syndrome-related antigen A/Ro60 kDa (SSA/Ro60),
342 ribosomal P, myeloperoxidase (MPO), and PM/Scl-100, which were significantly elevated in
343 SCD participants when compared to HCs (Fig. 1A, 1B). After multiple comparison corrections,
344 SSA/Ro60 and MPO remained significantly higher in the SCD subjects ($p = 0.048$ and $p =$
345 0.022 , respectively). It is noteworthy that while SSA/Ro60 autoantibody is typically classified as
346 an ANA, autoantibodies against the ribosomal P, MPO, or PM/Scl-100 are not categorized as
347 ANAs (non-ANAs). Thus, both ANAs and non-ANAs in the bloodstream were significantly
348 elevated in SCD participants compared to HCs.

349

350 **SCD participants exhibited abnormally high rates of RBC/reticulocyte-leukocyte**
351 **aggregation**

352 RBC/reticulocyte-leukocyte aggregates in SCD participants were assessed using flow
353 cytometry (Fig. 2A). Freshly isolated PBMCs were stained with antibodies against human CD45
354 (a marker expressed on all leukocytes), CD235ab (a marker expressed on RBCs and their
355 precursors), BCAM, and CD71 (transferring receptor-1, a specific marker of reticulocytes
356 among the RBC population). As depicted in Fig. 2B, the percentage of total CD235ab^{hi}CD45⁺
357 aggregates were significantly higher in SCD participants compared to HCs. The percentage of
358 CD71⁺ reticulocyte aggregates was significantly higher in SCD participants compared to HCs
359 (Fig. 2C, left panel). In parallel, the percentage of CD71⁺ reticulocytes in free fraction were
360 also significantly higher in SCD participants compared to HCs, indicating an increase of
361 reticulocytes in SCD participants (Fig. 2C, right panel). Similarly, BCAM expression on
362 aggregates or unaggregated RBCs was significantly higher in SCD participants compared to
363 HCs (Fig. 2D). This observation suggested that StSt PBMC samples contained higher numbers
364 of RBCs or RBC precursors, such as reticulocytes, and higher levels of the cell adhesion
365 molecule BCAM, thus contributing to the increased occurrence of aggregates. Compared to
366 HCs, the percentage of CD45⁺ lymphocytes in the aggregates were significantly lower in SCD
367 participants, whereas the frequency of monocytes was higher (Fig. 2E). When the immune cell
368 types in PBMCs and the aggregates in the SCD participants were analyzed and compared,
369 monocytes were enriched within the aggregates with a corresponding decrease of
370 lymphocytes within aggregation relative to PBMCs (Fig. 2F), indicating RBCs/RBC
371 precursors preferentially interacted with monocytes within the aggregates.

372

373 **Comprehensive analysis revealed correlations of inflammatory mediators with**
374 **autoantibodies and RBC/reticulocyte-leukocyte aggregation in SCD participants**

375 Next, we evaluated correlations between the 37 elevated inflammatory mediators (9
376 analytes with adjusted $p < 0.05$ bolded) that were listed in Table 3, altered autoantibodies
377 targeting SSA/Ro60, ribosomal PMPO, and PM/Scl-100, and RBC/reticulocyte-leukocyte
378 aggregation in StSt participants (Table 4). The elevated plasma level of IL-4 and IL-5, both type
379 II cytokines known for facilitating the development of B cells into antibody-producing plasma
380 cells, exhibited significant positive associations with SSA/Ro60 autoantibodies. These
381 autoantibodies are a type of ANAs commonly linked to autoimmune diseases such as SLE
382 (Table 4) (43). IL-4 also exhibited a trend towards correlation with ribosomal P and MPO
383 autoantibodies ($r = 0.31$, $p = 0.076$ for both). Additionally, SSA/Ro60 autoantibodies showed
384 associations with multiple inflammatory mediators, including the effector molecule granzyme A,
385 2 growth factors (IL-34 and VEGF-A), and 2 proinflammatory cytokines (IL-1a and IL-9).
386 Furthermore, both IL-1a and MIP-1b positively correlated with the non-ANA autoantibodies
387 against MPO. Conversely, none of the 37 elevated inflammatory mediators were found to be
388 associated with anti-PM/Scl-100 autoantibodies (data not shown).

389 We also analyzed the association of the inflammatory mediators with RBC/reticulocyte-
390 leukocyte aggregation. Two chemokines (CCL23 and MIP-1a) and the growth factor HGF
391 exhibited positive associations with the percentage of RBC/reticulocyte-leukocyte aggregates
392 (Table 4). Together, our data demonstrate that inflammation is closely linked to autoimmunity
393 and RBC aggregation with leukocytes in SCD participants at the steady state.

394

395 **Correlation analysis uncovered significant associations between inflammatory mediators** 396 **and autoantibodies with VOCs/pain/sensory sensitivity**

397 To investigate potential underlying factors contributing to VOCs, we examined the
398 relationships of the elevated 37 inflammatory mediators, 4 autoantibodies, or RBC/reticulocyte-

399 leukocyte aggregates with the intervals before and after VOC episodes (Table 5). After being
400 adjusted for age, gender, and SCD genotypes, 6 inflammatory mediators (Extaxin-2, GRO- α , IL-
401 2, IL-6, IL-17A, and LIF) showed positive correlations with the time intervals after VOCs.
402 Conversely, the inflammatory cytokine IL-18 and granzyme A exhibited negative associations
403 with the time interval before VOCs. These results suggest that specific inflammatory mediators,
404 namely granzyme A and IL-18, might play a crucial role in the early detection or development of
405 VOCs.

406 Next, we analyzed correlations of the inflammatory mediators with pain and sensory
407 sensitivity as assessed by PROMs and QST. As presented in Table 6, several inflammatory
408 mediators were associated with patient-reported pain intensity, physical function, and sensory
409 sensitivity. A group of inflammatory mediators (G-CSF, granzyme A, BAFF, IL-9, and IL-17A)
410 exhibited positive correlations with PedsQL scores. Conversely, most of the correlations
411 between inflammatory mediators and various PROMs were negative. Specifically, 19
412 inflammatory mediators (CCL23, GM-CSF, GRO-a, MCP-2, Granzyme B, BAFF, bNGF, IL-7, IL-
413 20, LIF, IL-2, IL-9, IL-17A, TNF-a, TNF-b, IL-5, IL-6, TSLP, and TREM-1) displayed negative
414 associations with physical and psychological PROMs (Pain Intensity, Pain Episode, Depression
415 Score, and Physical Function Score). Notably, 16 of the 19 factors were negatively correlated
416 with the Physical Function Score, while 8 of them had negative correlations with Pain Episode
417 Frequency/Recency. Moreover, 9 out of the 19 factors (Granzyme B, IL-20, LIF, IL-2, IL-17A,
418 TNF-b, IL-5, IL-6, and TSLP) showed a positive association with the mechanical threshold (MDT
419 forearm). Two additional factors, CCL21 and IL-8, were also positively associated with the MDT
420 forearm. Five factors (Eotaxin-2, CCL21, GRO-a, MCP-2, and TREM-1) displayed positive
421 correlations with pressure threshold (PPT trapezius). Furthermore, a group of inflammatory
422 factors (Eotaxin-2, CCL21, GRO-a, MCP-2, MIP-3a, HGF, VEGF-A, IL-8, TNF-a, TNF-b, IL-5,
423 and TREM-1) displayed negative correlations with mechanical pain threshold (MPT forearm and
424 MTS forearm), and sensitivity threshold to cold (CPT forearm). Of note, several inflammatory

425 factors, including GRO-a, MCP-2, granzyme B, IL-2, IL-17A, TNF-b, IL-5, and TREM-1, showed
426 correlations with multiple measures from both PROMs and QST,

427 We also assessed the relationship of PROMs and experimental sensory sensitivity with
428 the autoantibodies and RBC/reticulocyte-leukocyte aggregations (Table 6). We found that
429 elevated autoantibodies against MPO exhibited a negative correlation with Physical Function
430 Score and strong positive correlations with PPT (trapezius) and PPTol (trapezius). However, no
431 correlations were detected between PROMS/QST and increased rate of RBC/reticulocyte-
432 leukocyte aggregation, as well as BCAM and CD71 expression on the aggregates. Together,
433 our results indicate that multiple inflammatory/autoimmune markers are inversely associated
434 with the well-being of the SCD participants.

435

436 **Discussion**

437 This study represents an interim analysis of an ongoing clinical trial that aims at
438 investigating the clinical efficacy and neurobiological mechanisms of acupuncture analgesia in
439 SCD participants (NCT05045820). Results showed that SCD participants in StSt showed higher
440 levels of sensory sensitivity, as well as increased pain intensity, pain interference, widespread
441 pain, physical dysfunction, and depression compared to HCs (Table 2). These results highlight
442 the significant impact of SCD on patients' physical and emotional well-being and align with
443 previous studies on SCD (30, 34, 38, 39, 44, 45).

444 We collected cross-sectional blood samples and clinical parameters to comprehensively
445 study inflammatory mediators, autoantibody profiles, and presence of RBC/reticulocyte-
446 leukocyte aggregates, exploring their interrelations and potential relationship with VOCs, QoL,
447 and sensory sensitivity. Specifically, we examined the plasma levels of 80 inflammatory
448 mediators (Supplementary Table 1), the profiles of autoantibodies against 18 human antigens
449 (Fig. 1), and the presence of RBC/reticulocyte-leukocyte aggregates in these participants (Fig.

450 2). Moreover, we investigated the correlations between these analytes and their potential
451 relationship with VOCs, QoL, and sensory sensitivity in SCD participants. By examining these
452 analytes and their relationships, we sought to identify potential mechanisms and therapeutic
453 targets for further exploration and investigation.

454 SCD is characterized by a persistent pro-inflammatory state that leads to elevated levels
455 of inflammatory mediators in the bloodstream. Inflammatory mediators are vital signaling
456 molecules that play a crucial role in the development of pain, VOCs, and the pathogenesis of
457 SCD (8, 17, 46). A recent study measured the serum levels of 27 inflammatory mediators
458 including 15 cytokines, 7 chemokines, and 5 growth factors in 27 StSt and 53 HCs (28). The
459 results revealed that significantly higher levels of several cytokines, chemokines, and growth
460 factors in SCD participants compared to HCs (28). Strikingly, SCD participants exhibited
461 elevated serum concentrations of pro-inflammatory molecules, such as IL-1 β , IL-12p70, and IL-
462 17A, when compared to SCD participants experiencing VOC (28). Here we expanded the
463 spectrum of analyses and observed that SCD participants exhibited higher plasma levels of 37
464 out of 80 analytes, including 13 pro-inflammatory/anti-inflammatory cytokines, 10 chemokines,
465 10 growth factors, 2 effectors, and 2 soluble receptors (Table 3 and supplementary Tables 1
466 and 2). These findings collectively indicate a pro-inflammatory bias in SCD participants as
467 compared to HCs.

468 Numerous cytokines elevated in our study, such as IL-1 α , IL-4, IL-5, IL-6, IL-7, IL-8, TNF- α
469 were previously shown to be involved in VOC-related acute clinical complications such as acute
470 chest syndrome, pulmonary hypertension, and pulmonary thrombosis (47-53). Systemic
471 inflammation and modulation of the immune system with crosstalk of immunological molecules
472 and immune cells were associated with the pathogenesis of persistent pain and the onset of
473 VOCs in SCD. Plasma IFN- γ was augmented in steady-state SCD, which could modulate
474 macrophage function and increase T helper cell expansion in SCD and most likely reflect
475 inflammasome formation in inflammatory cells (52, 54, 55). Endothelium activation could in turn

476 produce and release a number of potent inflammatory molecules, including IL-1 α , IL-1 β , IL-6, IL-
477 8, GM-CSF, MCP-1, plasminogen activator inhibitor-1, and RANTES (52, 53, 56-58). The
478 maturation and release of bioactive IL-1 β and IL-18 (59-65), two vital immunoregulatory and
479 proinflammatory cytokines, are governed by inflammatory caspases operating within specialized
480 signaling platforms referred to as inflammasomes. Elevated plasma levels of IL-1 β and IL-18 in
481 SCD participants strongly suggest an aberration in the regulation of inflammasome activation
482 within this particular group. In addition, IL-1 β exerts a potent activation effect on leukocytes and
483 ECs. Meanwhile, IL-18 plays an important role in stimulating vascular smooth muscle cell
484 proliferation and migration, along with promoting the productions of IFN- γ , IL-2 and IL-12. These
485 actions collectively exacerbate the inflammatory milieu in SCD participants (51, 54, 55). Notably,
486 excessive production of IL-8 and RANTES contributes to the dehydration of sickle RBC, leading
487 to an increase in RBC density and rigidity (66). This, in turn, enhances the adhesion of RBCs to
488 the endothelium (67), a phenomenon closely linked to the severity of VOCs. These findings
489 suggest that SCD participants experience persistently high levels of inflammatory mediators
490 during StSt phases, even in the absence of severe clinical symptoms like VOCs.

491 Several inflammatory mediators were associated with the presence of autoantibodies and
492 RBC/reticulocyte-leukocyte aggregation in SCD participants. Specifically, 8 inflammatory factors
493 (MIP-1b, granzyme A, IL-34, VEGF-A, IL-1a, IL-9, IL-4, and IL-5) were positively associated with
494 autoantibodies targeting 2 human antigens (SSA/Ro60 and MPO) (Table 4). Anti-SSA/Ro60
495 autoantibodies are typically classified as ANAs, while anti-MPO autoantibodies are categorized
496 as non-ANAs. Thus, our results indicate that elevated inflammatory mediators are closely linked
497 to both ANAs (anti-SSA/Ro60 autoantibodies) and non-ANAs (anti-MPO autoantibodies) in the
498 bloodstream of SCD participants. Notably, the vast majority (7 out of 8) of inflammatory
499 mediators displayed positive associations with both ANA (SSA/Ro60) and non-ANAs (Table 4).
500 Given that mature RBCs in mammals lack nuclei, mitochondria, and other organelles (68), these
501 inflammatory mediators are more likely to be implicated in autoimmune responses to cellular

502 debris from other types of cells rather than mature RBCs. This finding suggests a potential link
503 between ANA-associated autoimmunity and the presence of specific inflammatory mediators,
504 which may contribute to our understanding of autoimmune processes and their association with
505 certain cellular components in SCD.

506 In SCD participants, a complex and detrimental cycle is established through the interplay
507 between inflammation and the formation of RBC/reticulocyte-leukocyte aggregates (69, 70).
508 Inflammatory mediators disrupt immune responses, leading to an increased aggregation of
509 RBCs/reticulocytes with leukocytes. Consequently, these aggregates exacerbate blood vessel
510 blockages, further impeding blood flow and perpetuating the cycle of inflammation and tissue
511 damage. This process triggers the release of additional inflammatory mediators, thus fueling a
512 vicious circle of inflammation and VOCs. This vicious circle plays a significant role in the
513 pathophysiology of SCD and significantly contributes to the recurrent pain crises and organ
514 damage observed in affected individuals. We analyzed the association of inflammatory
515 mediators with RBC/reticulocyte-leukocyte aggregation. In line with previous studies, our results
516 also revealed 2 chemokines (CCL23 and MCP-1a) and 1 growth factor (HGF) that were
517 associated with the aggregation (Table 4). These results provide important insights into the
518 relationship between inflammation and RBC/reticulocyte-leukocyte aggregates that are
519 associated with the occurrence and severity of VOCs.

520 SCD participants experience sudden and intense episodes of VOCs, which are
521 challenging to predict and manage (71, 72). However, understanding of the circulating markers
522 and their pathological processes during the transitioning phase from StSt to VOC episodes is
523 extremely limited due to the unpredictable and rapid progression of the onset of VOCs. A
524 previous study identified PDGF-BB and IL-1R α as potential indicators for the acute-to-chronic
525 stage in SCD (28). Our data revealed that 2 elevated inflammatory mediators (IL-18 and
526 granzyme A) were associated with time the intervals prior to VOC onset and 6 mediators
527 (Extaxin-2, GRO- α , IL-2, IL-6, IL-17A, and LIF) were associated with time intervals after active

528 VOCs (Table 5), suggesting that these 8 mediators hold the potential to serve as novel
529 biomarkers for predicting VOC episodes. Of particular note, IL-18 has emerged as a critical
530 proinflammatory regulator in both innate and adaptive immune responses (73), and blocking IL-
531 18 has been associated with mitigating neuropathic symptoms and enhancing the analgesic
532 activity of morphine and buprenorphine (74). Inhibition of Granzyme A has been shown to
533 reduce the levels of IL-6 and TNF- α (75). Thus, our results underscore the significance of
534 specific inflammatory mediators in the early detection and development of VOCs, as well as
535 potential avenues for pain management in SCD participants experiencing VOCs.

536 The existing literature has extensively studied the inflammation- and immunity-based
537 mechanisms in SCD as compared to HCs, as well as the differences between StSt and VOC
538 phases. However, there are limited studies investigating the relationship of inflammatory
539 markers with clinical symptoms and sensory sensitivity during StSt. In the present study, we
540 found that multiple inflammatory molecules were negatively associated with pain intensity
541 (higher score indicated higher pain), the frequency/recency of clinical pain episodes (higher
542 score indicated higher frequency/recency of acute pain episodes), emotional distress
543 (depression), and physical dysfunction (higher score indicated higher physical dysfunction) in
544 SCD participants. Conversely, higher levels of several soluble factors correlated with higher
545 QoL and less pain. SCD participants with less severe Pain Episodes Score (higher score
546 indicated higher severity) were associated with higher levels of GRO- α , MCP-2, granzyme B,
547 bNGF, IL-7, IL-2, IL-17, and TREM 1 (Table 6). Of particular interest, higher IL-17A levels were
548 also correlated with less pain intensity, physical dysfunction and higher QoL (higher PedsQL
549 score indicated higher QoL). In fact, elevated IL-17A is associated with absence of acute chest
550 syndrome in SCD participants, indicating a protective role (76). Consistently, higher levels of
551 many inflammatory markers were also associated with decreased sensory sensitivity (in other
552 words: increased threshold/tolerance to experimental stimuli) in response to mechanical (MDT,
553 MPT, MTS), thermal (CPT), and pressure (PPT and PPTol) stimuli. We observed that SCD

554 participants who had higher levels of Eotaxin-2, CCL21, GRO-a, MCP-2, HGF, and TREM-1
555 simultaneously exhibited lowered cold pain sensitivity (in other words: increased tolerance of
556 cold-induced pain). These novel findings have not been reported in existing literature in SCD.
557 The underlying mechanisms of these intriguing observations are unknown and warrant future
558 investigation. We speculate that SCD participants experiencing recurrent extremely painful
559 VOCs-related episodes developed resistance and pain inhibitory effect, thus exhibited
560 decreased sensory sensitivity and increased tolerance to experimental pain stimuli, which
561 therefore inhibited the antidromic release of proinflammatory mediators at periphery. This
562 correlation profile suggested the interactive and distinct roles of inflammatory mediators in the
563 processing of pain, and sensory sensitivity at StSt, and could be utilized for more extensive
564 studies to explore the underlying nociceptive pathways in SCD.

565 In line with the correlation profile presented in Table 6, elevated anti-MPO autoantibodies
566 were associated with decreased sensitivity and tolerance to pressure pain (PPT trapezius and
567 PPTol trapezius). Notably, MPO plays a crucial role as a marker and modulator of inflammation
568 and oxidative stress, primarily originating from activated leukocytes and neutrophils (77). A
569 previous study demonstrated that increased MPO impairs EC function through vascular
570 oxidative stress, while inhibiting MPO shows promise in improving vasodilation in mouse models
571 of SCD (78). Furthermore, many SCD participants experience heightened cold sensitivity (79),
572 and exposure to potential triggers, such as cold temperatures or stress, can induce
573 vasoconstriction, potentially leading to VOC (80, 81). Therefore, elevated autoantibodies, such
574 as anti-MPO autoantibodies (Fig.1), might contribute to vasoconstriction during the prodromal
575 phase of VOCs while simultaneously interacting with immune- and inflammatory-targets (Table
576 4) to modulate pain inhibitory effect at StSt.

577 Inflammation, autoimmunity, and RBC/reticulocyte-leukocyte aggregations are believed to
578 play a significant role in the pathogenesis of pain and VOCs in SCD participants (23, 82, 83).
579 However, the direct connections of these factors with pain and VOCs in SCD participants are

580 not fully understood. Our comprehensive analyses of these cross-sectional clinical samples
581 provide valuable insights into the correlations between inflammatory mediators, autoantibody
582 profiles, RBC/reticulocyte-leukocyte aggregation, clinical lab test results, and their associations
583 with the onset of VOCs and pain sensitivity in SCD participants. This knowledge has the
584 potential to significantly contribute to the development of suitable biomarkers/endpoints for
585 clinical diagnosis of pain episodes in SCD participants, as well as targeted therapeutic
586 approaches and improved management strategies for individuals affected by this condition.
587 However, it is essential to acknowledge the limitations of our cross-sectional study, including
588 small sample size, potential bias, confounding factors, the absence of insight into temporal
589 trends, and the inability to establish causality. To address these limitations, we have undertaken
590 efforts to collect longitudinal clinical samples throughout the duration of our clinical trial cohort
591 and expand our sample size with ongoing recruitment efforts. This longitudinal approach is
592 expected to provide a stronger foundation for establishing causal relationships between the
593 analyzed variables. By observing changes over time, we can better infer cause-and-effect
594 relationships of these variables, thus advancing our understanding of the mechanisms
595 underlying the pathogenesis of SCD. Furthermore, the combination of cross-sectional and
596 longitudinal approaches will enable us to gather complementary data, extending our
597 investigations to address a broader range of clinical questions in both SCD participants and
598 SCD participants experiencing acute VOC. The information gathered from these approaches will
599 be pivotal in evaluating the clinical efficacy and neurobiological mechanisms of acupuncture
600 analgesia in SCD participants participating in our clinical trial.

601

602 **Author contribution**

603 W.L., Q.Y., and Y.W. supervised experimental performance and data collection, analysis,
604 and interpretation; A.Q.P., C.D., and B.R. assisted with data collection and figure preparation.
605 F.S. assisted with data analyses and figure preparation; W.L., Q.Y., and Y.W. drafted and edited
606 the manuscript; S.E.H., and R.E.H. helped with editing the manuscript; Y.W. and A.R.O.
607 directed patient recruitment; A.R.O., R.M., N.M., S.A.J., B.M.H., A.G. facilitated recruitment for
608 the study; Y.W. developed the concepts, directed overall performance and quality of the clinical
609 investigation.

610

611 **Authors Statement of Competing Interest**

612 All authors have read the journal's authorship agreement and policy on disclosure of
613 potential conflicts of interest.

614

615 **Acknowledgement**

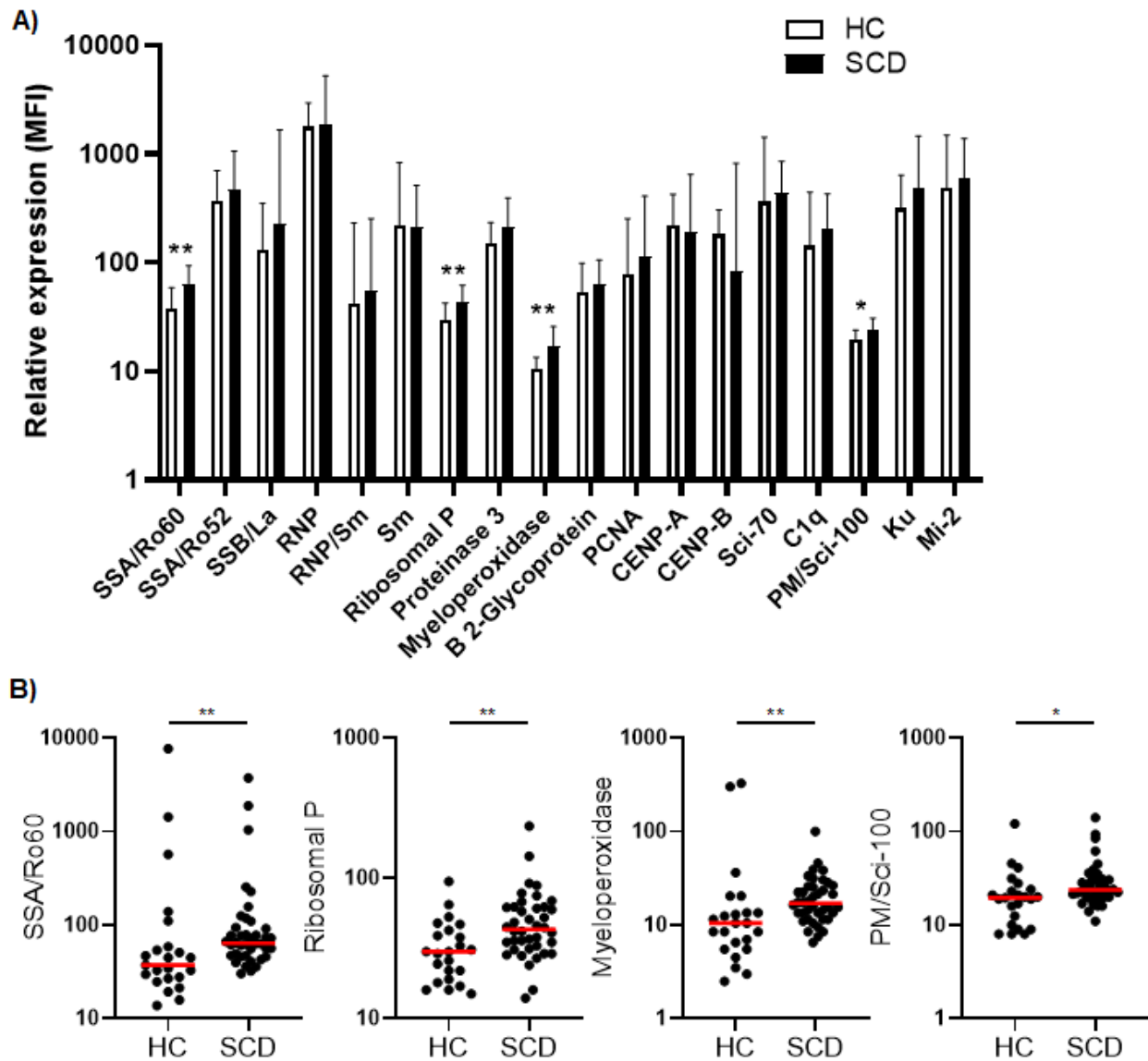
616 The authors would like to thank Tyler James Barret, Nayana Dutt, Payton Mittman, Bea
617 Paras, Ramat Gbemisola Suleiman-Oba, Amy Gao and Yongqi Yu for assisting with
618 experimental performance, and clinical team staff at Indiana University Clinical Research Center
619 for patient scheduling and blood draw performance.

620

621 **Funding Support**

622 This work was supported by NIH K99/R00 award (Grant # 4R00AT010012 to Y.W.) and
623 Indiana University Health – Indiana University School of Medicine Strategic Research Initiative
624 funding to Y.W.
625

Figure 1



627

628 **Fig. 1. Comparative analysis of quantity and individual incidence of elevated**629 **autoantibodies in SCD participants versus healthy controls. A)** The levels of plasma

630 autoantibodies against 18 autoantigens in SCD participants (n=40) versus healthy controls

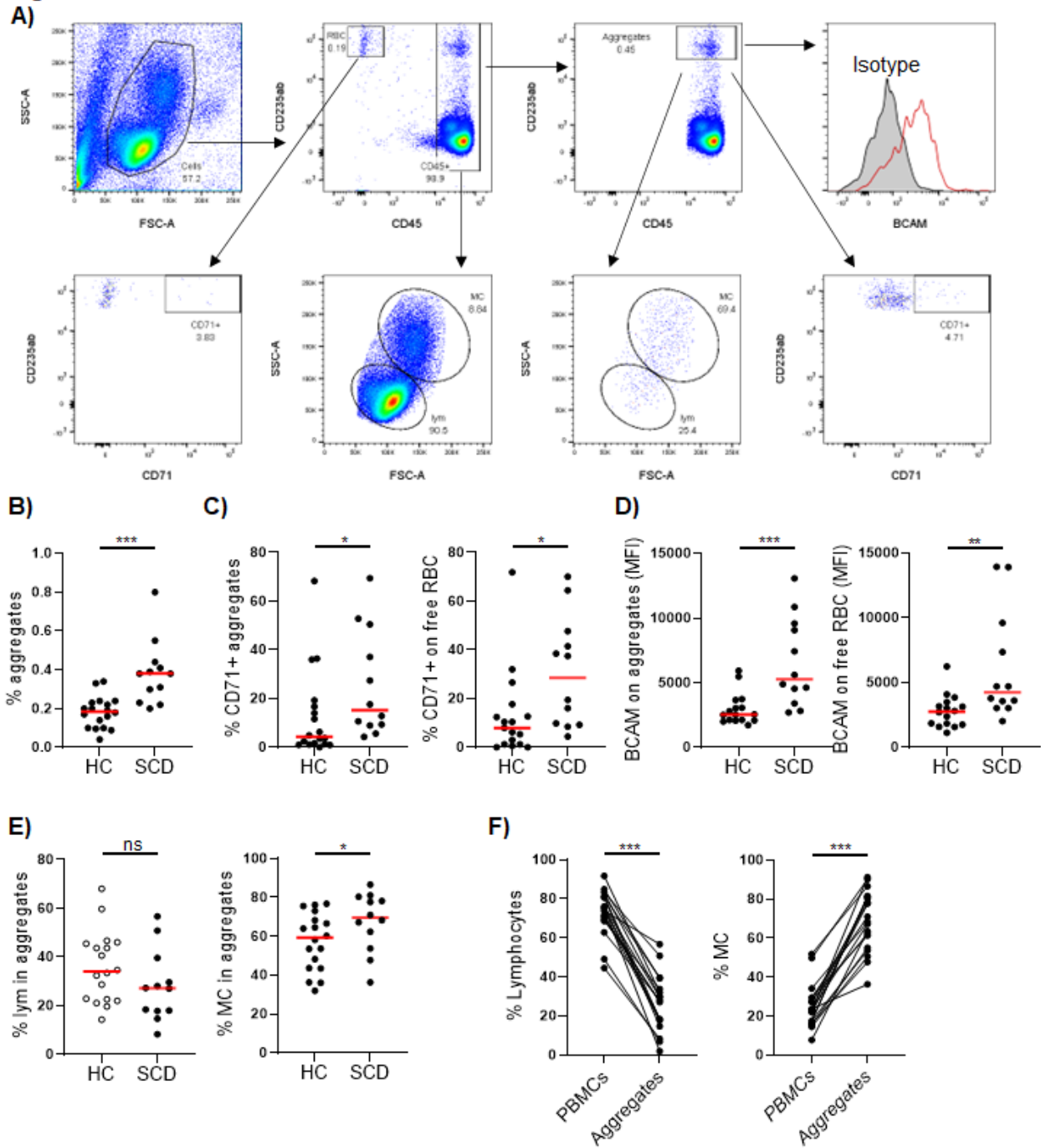
631 (HCs, n=23). The median fluorescence intensity (MFI) after background MFI subtraction was

632 used to represent relative expression of the 18 autoantibodies in SCD and HC samples, shown

633 as median + upper interquartile range (IQR). **B)** Scatter plots demonstrating the plasma levels

634 of 4 autoantibodies (anti-SSA/Ro60, anti-Ribosomal P, anti-Myeloperoxidase, and anti-PM/Scl-
635 100) that were significantly elevated in SCD participants compared to healthy controls. Lines
636 represent the median. SCD, sickle cell disease; HC, healthy control. Mann-Whitney test was
637 used to compare the results from SCD patient versus HC samples. * $p < 0.05$; ** $p < 0.01$.
638

Figure 2



639

640 **Fig. 2. Comparison of RBC/reticulocyte aggregation with CD45⁺ PBMCs in SCD**

641 **participants versus healthy controls.** Freshly isolated peripheral blood mononuclear cells

642 (PBMCs) from the SCD participants (n=12) and healthy controls (HC, n=17) were analyzed for

643 RBC/reticulocyte aggregation with CD45⁺ PBMCs by flow cytometry. **A)** Gating strategies for

644 flow cytometric analysis of RBC/reticulocyte-CD45⁺ leukocytes aggregation. PBMCs were
645 stained with fluorochrome-conjugated antibodies against human CD45, CD235ab, CD71, BCAM
646 and isotype control antibodies. CD235ab⁺ cells that were not associated with CD45⁺ PBMCs
647 were defined as RBC/reticulocyte in free fraction (RBC). Within the CD45⁺ cells, CD235ab^{hi} cells
648 were defined as the RBC/reticulocyte-CD45⁺ leukocyte aggregates. The gate for CD71⁺
649 RBC/reticulocyte and RBC/reticulocyte-leukocyte aggregates were based on the isotype control.
650 BCAM level was expressed as mean fluorescent intensity (MFI). Lymphocytes (LYM) and
651 monocytes (MC) were gated based on their FCS and SSC chromatistics. **B)** Scatter plots
652 showing a significantly higher percentage of RBC/reticulocyte-CD45⁺ leukocyte aggregation in
653 the SCD participants than HC. **C, D)** Scatter plots displaying higher levels of CD71⁺ erythroid
654 precursors (C) and the cell adhesion molecule BCAM (D) on both aggregated and
655 unaggregated RBC/reticulocyte in the SCD participants compared to HC. **E)** Scatter plots
656 comparing the frequencies of lymphocytes and monocytes within RBC/reticulocyte-CD45⁺
657 leukocyte aggregates. **F)** Before and after plots showing the percentages of lymphocytes (left)
658 were reduced while those of monocytes (right) were heightened in the aggregates compared to
659 PBMCs in the SCD subjects. Mann-Whitney test was used to compare the results from SCD
660 patient versus HC samples. Wilcoxon test was used to calculate the differences between
661 aggregates and PBMCs. **p* < 0.05; ***p* < 0.01; ****p* < 0.001.

662

663

664

665

666

667

668

Table 1. Clinical and hematological characteristics of the study participants

Parameters	HCs (n=23)	SCD (n=40)	p value
Demographics			
Age (years)	38 (22-57)	34 (23-41)	0.16
Gender (% females)	13 (57%)	23 (58%)	0.94
SS/Sβ0/SC/Sβ+ thalassemia (n/n/n/n)	N/A	23/3/11/3	
Hemogram/Platelets/WBC Differential			
WBC (k/cumm)	5.1 (4.0-6.3)	8.8 (6.1-11.4)	0.0001
RBC (million/cumm)	4.6 (4.3-5.1)	2.9 (2.4-3.7)	<0.0001
Hgb (GM/dL)	13.0 (12.2-14.3)	10.2 (8.0-11.6)	<0.0001
HCT (%)	38.8 (36.4-41.9)	29.2 (23.6-34.0)	<0.0001
Absolute Retic Number (k/cumm)	48.8 (41.6-71.0)	131.2 (88.5-216.4)	<0.0001
Hemoglobin A (%)	97.4 (88.5-97.6)	23.0 (13.8-30.6)	<0.0001
Hemoglobin S (%)		63.4 (49.1-73.1)	
Hemoglobin F (%)		5.8 (2.4-13.4)	
MCV (fL) [81-99]	86 (81-89)	94 (83-104)	0.020
MCH (pg) [27.0-34.0]	28.4 (27.3-29.6)	32.3 (27.5-35.8)	0.0033
RDW (%) [11.5-14.5]	13.7 (13.3-14.9)	18.4 (15.8-23.6)	<0.0001
Platelet (k/cumm) [150-450]	246 (231-270)	309 (247-424)	0.0029
Absolute Neutrophil	2.75 (1.6-3.8)	4.8 (3.1-7.2)	0.0005
Absolute Lymphocyte	2.1 (1.5-2.5)	2.4 (1.7-4.1)	0.055 [#]
Absolute Monocyte	0.4 (0.3-0.4)	0.8 (0.5-1.1)	<0.0001
Absolute Eosinophil	0.1 (0.1-0.2)	0.2 (0.1-0.4)	0.058 [#]
Absolute Basophil	0 (0-0)	0.1 (0-0.1)	0.0007
Immunological tests			
C-reactive protein (mg/ml)	1.1 (0.4-2.7)	3.9 (1.6-7.3)	0.0038

669 **Note:** HCs, healthy controls; SCD, sickle cell disease; WBC, white blood cell; RBC, red blood
670 cell; Hgb, hemoglobin; HCT, hematocrit; MCV, mean corpuscular volume; MCH, mean
671 corpuscular hemoglobin; RDW, red cell distribution width. The Mann-Whitney test was used to
672 compare differences between patients with SCD and healthy controls (HC) for continuous
673 variables. χ^2 test was used for comparison of gender distribution between the 2 groups. $p <$
674 0.05 was considered significant. [#] $p < 0.06$ was considered as a clear trend toward significance.
675
676

Table 2. Patient-reported outcome measures and quantitative sensory testing

Parameters	HCs (n=23)	SCD (n=33)	p value
PROMs			
PainDetect_Total score	7 (7-7)	19 (14-24)	<0.0001
BPI_Pain Interference Score	0 (0-0)	4.2 (1.8-5.6)	<0.0001
FPS_Widespread Pain Index	0 (0-0)	6 (3-8)	<0.0001
PROMISE 29_Physical Function Score	4 (4-4)	7 (5-11.5)	<0.0001
PROMISE 29_Pain Intensity Score	0 (0-0)	5 (4-6)	<0.0001
HADS_Depression Score	1 (0-3)	4.5 (2.0-7.8)	0.0002
Pain Episode Frequency Score	N/A	8 (6-9)	
Number of VOCs in preceding 12 months	N/A	4 (2-7)	
PedsQL_Total Score	N/A	52 (43-63)	
Quantitative Sensory Testing			
MDT (forearm)	0.4 (0.2-0.5)	0.3 (0.1-0.5)	0.0433
MDT (primary site)	0.3 (0.2-0.5)	0.2 (0.1-0.6)	0.4946
MPT (forearm)	77.0 (40.0-105.7)	62.4 (23.2-128.0)	0.6220
MPT (primary site)	83 (45.8-161.7)	41.6 (15.3-104.0)	0.0444
MTS (forearm)	6.7 (0.0-29.2)	8.7 (3.3-23.3)	0.3783
MTS (primary site)	5.0 (1.5-18.8)	15.3 (5.3-23.0)	0.0434
CDT (forearm)	-2.4 ((-4.3)-(-1.6))	-2.0 ((-3.1)-(-1.5))	0.3888
CDT (primary site)	-2.0 ((-3.4)-(-1.4))	-2.4 ((-3.5)-(-1.5))	0.5940
CPT (forearm)	-13.3 ((-24.6)-(-5.4))	-6.8 ((-13.1)-(-3.9))	0.0276
CPT (primary site)	-15.65 ((-26.5)-(-6))	-7.3 ((-12.7)-(-4.3))	0.0274
HDT (forearm)	3.3 (2.5-4.0)	3.6 (2.5-4.4)	0.8099
HDT (primary site)	3.6 (3.1-5.9)	4.1 (2.7-5.7)	0.6730
HPT (forearm)	7.8 (4.8-11.1)	8.7 (5.4-10.7)	0.9278
HPT (primary site)	7.3 (6.2-10.9)	8.3 (6.1-10.3)	0.8623
PPT (trapezius)	255.5 (179.3-364.5)	203.5 (164.0-278.5)	0.0404
PPT (primary site)	321.0 (196.0-539.0)	192.0 (142.0-263.8)	0.0026
PPTol (trapezius)	415.5 (341.8.5-559.6)	316.5 (2250-391.8)	0.0129
PPTol (primary site)	526.0 (316.0-827.0)	302.0 (223.8-463.8)	0.0029
CPM (pain rating)	43.0 (30.0-54.0)	39.0 (28.0-51.0)	0.7441

677 **Note:** HCs, healthy controls; SCD, sickle cell disease; MDT, mechanical detection threshold;
678 MPT, mechanical pain threshold; MTS, mechanical temporal summation; Mechanical CDT, cold
679 detection threshold; CPT, cold pain threshold; HDT, heat detection threshold; HPT, heat pain
680 threshold; PPT, pressure pain threshold; PPTol, pressure pain tolerance; CPM, conditioned pain
681 modulation. The Mann-Whitney test was used to compare differences between patients with
682 SCD and HCs. $p < 0.05$ was considered significant.
683

Table 3: Upregulated inflammatory mediators in SCD subjects as detected by 80plex immunoassay

Categories	Analytes	HCs (n=18)	SCD (n=36)	<i>p</i>	Adjusted <i>p</i>
Chemokines	CCL21	0.1 (0-12.8)	20.4 (0.6-71.5)	0.00280	0.17337
	CCL23	487 (302-639)	874 (574-1285)	0.00014	0.01046
	Eotaxin-2	0.1 (0-6.6)	10.4 (0-97.7)	0.04479	0.88393
	Gal-3	6749 (4949-8982)	15144 (6910-34355)	0.00055	0.03958
	GRO- α	1.7 (1.3-2.0)	2.4 (1.7-3.1)	0.00625	0.33050
	IP-10	17.2 (10.1-25.6)	36.9 (21.3-60.7)	0.00012	0.00891
	MCP-2	0.2 (0.1-0.7)	2.1 (0.7-5.3)	0.00001	0.00091
	MIP-1 α	0 (0-1.6)	2.7 (0.7-6.9)	0.00629	0.33050
	MIP-1 β	30.0 (14.9-40.5)	56.8 (29.7-71.5)	0.00134	0.09067
	MIP-3 α	5.1 (4.4-5.5)	5.9 (5.5-7.6)	0.00196	0.12821
Effectors	Granzyme A	3.4 (0-10.9)	11.1 (4.6-23.5)	0.00442	0.25324
	Granzyme B	10.4 (7.0-28.0)	20.2 (12.6-31.9)	0.01758	0.62295
Growth factors	BAFF	3.053 (1.051-4.074)	4.283 (2.555-6.08)	0.01758	0.62295
	bNGF	1.1 (0.9-3.1)	2.1 (1.2-4.6)	0.02762	0.75348
	G-CSF	4.2 (0-89.4)	50.7 (25.3-116.3)	0.01299	0.51903
	GM-CSF	0 (0-0)	3.8 (0-20.5)	0.00256	0.16236
	HGF	6.4 (2.9-20.3)	56.2 (13.1-70.2)	0.00003	0.00253
	IL-7	0 (0-0)	0 (0-1.1)	0.02305	0.70251
	IL-20	6.9 (5.5-10.5)	9.6 (6.7-21.8)	0.02509	0.72631
	IL-34	11.5 (8.3-18.5)	21.9 (13.7-43.9)	0.00051	0.03716
	LIF	0.6 (0.4-2.7)	2.4 (1.1-4.8)	0.00991	0.44448
	VEGF-A	50.02 (33.59-65.04)	73.17 (35.73-156.1)	0.0523 [#]	0.91076
Inflammatory cytokines	IFN-γ	1.8 (1.4-2.2)	3.9 (2.3-4.8)	0.00023	0.01737
	IL-1 α	3.9 (2.5-11.0)	6.9 (4.1-16.4)	0.04832	0.89752
	IL-2	4.3 (3.2-6.2)	9.1 (4.5-14.7)	0.00940	0.43242
	IL-8	0.7 (0.1-6.9)	5.5 (2.1-10.2)	0.01183	0.49255
	IL-9	0.2 (0-1.4)	1.4 (0.5-3.0)	0.01134	0.48383
	IL-17A	0 (0-1.725)	0.98 (0-3.959)	0.05482 [#]	0.91633
	IL-18	5.0 (3.4-7.1)	13.7 (7.2-50.8)	0.00002	0.00173
	TNF- α	2.2 (1.9-2.6)	2.7 (2.3-3.2)	0.00460	0.25884
	TNF- β	0.1 (0-2.2)	1.5 (0.4-4.8)	0.02021	0.66116
	Type II inflammatory cytokines	IL-4	19.4 (11.2-35.1)	37.3 (18.5-77.2)	0.00901
IL-5		0 (0-0.2)	3.5 (0-12.3)	0.00290	0.17675
IL-6		0 (0-0.8)	1.5 (0-7.4)	0.03843	0.84757
TSLP		1.3 (0.8-2.2)	2.3 (1.7-3.4)	0.00791	0.38881
Soluble receptors	PTX3	1137 (798-1924)	3045 (1557-5283)	0.00064	0.04533
	TREM-1	0 (0-235.4)	248.2 (16.3-761.1)	0.02832	0.75524

684 **Note:** HCs, healthy controls; SCD, sickle cell disease. The Mann-Whitney test was used
685 to compare differences between patients with SCD and healthy controls (HC) without
686 and with Holm-Šídák correction for multiple comparisons. *p* < 0.05 was considered
687 significant. [#]*p* < 0.06 was considered a clear trend toward significance.
688

Table 4. Correlations of upregulated inflammatory mediators with altered autoantibodies and RBC/reticulocyte-leukocyte aggregation

Categories	Analytes	Autoantibodies		Aggregation
		SSA/Ro60	Myeloperoxidase	%
Chemokines	CCL23 ^{&}			0.88*
	MIP-1 α			0.88*
	MIP-1 β		0.37*	
Effector	Granzyme A	0.34 [#]		
Growth factors	HGF ^{&}			0.89*
	IL-34 ^{&}	0.48**		
	VEGF-A	0.33 [#]		
Proinflammatory cytokines	IL-1 α	0.35*	0.39*	
	IL-9	0.36*		
Type II cytokines	IL-4	0.48**		
	IL-5	0.33 [#]		

Note: Aggregation, RBC/reticulocyte-leukocyte aggregation. Spearman correlation analyses were performed including age, gender and SCD genotype as covariables. * $p < 0.05$; ** $p < 0.01$, *** $p < 0.001$, # $p < 0.06$, a clear trend toward significance, &mediators with adjusted $p < 0.05$ in Table 3.

Table 5: Correlations of altered inflammatory mediators with time interval from VOC crisis

	Days after crisis						Days before crisis	
	Eotaxin-2	GRO- α	IL-2	IL-6	IL-17A	LIF	IL-18 ^{&}	Granzyme A
<i>r</i>	0.36	0.47	0.37	0.38	0.39	0.48	-0.41	-0.43
<i>p</i>	0.058	0.010	0.051	0.044	0.035	0.008	0.028	0.022

Note: VOC, vaso-occlusive. The linear relationship between two variables was calculated using the Spearman correlation test with age, gender, and SCD genotype as covariables, which generated coefficient values (r) and statistical significance levels (p). $p < 0.05$ was considered significant, $p < 0.06$, a clear trend toward significance, &mediators with adjusted $p < 0.05$ in Table 3.

Table 6. Correlations of upregulated soluble factors/autoantibody with PROMs/Sensory sensitivity in SCD subjects

Categories	Biomarkers	Patient-Reported Outcomes					Quantitative Sensory Testing					
		Pain Intensity	Pain Episode	Depression Score	Physical Function Score	PedsQL	MDT (forearm)	MPT (forearm)	MTS (forearm)	CPT (forearm)	PPT (trapezius)	PPTol (trapezius)
Chemokines	Eotaxin-2											
	CCL21						0.41*					
	CCL23 &			-0.46*								
	G-CSF					0.47*						
	GM-CSF				-0.37*							
	GRO- α		-0.50**		-0.43*							
	IP-10 &											
	MCP-2 &		-0.41*									
	MIP-1 α							0.45*				
MIP-1 β												
MIP-3 α												
Effectors	Granzyme A					0.36*						
	Granzyme B		-0.37*		-0.51**		0.51*					
Growth factors	BAFF				-0.44*	0.37*						
	bNGF		-0.40*	-0.46*	-0.48**							
	HGF &									-0.43*		
	IL-7		-0.46*									
	IL-20				-0.35#		0.42*					
	LIF				-0.45*		0.43*					
	VEGF-A											-0.44*
Pro-inflammatory cytokines	IL-2		-0.43*		-0.40*		0.44*					
	IL-8						0.42*	-0.47*				
	IL-9				-0.36#	0.37*						
	IL-17A	-0.37*	-0.53**		-0.54**	0.43*	0.46*					
	TNF- α				-0.42*							-0.42*
	TNF- β				-0.41*		0.49*					-0.44*
Type II cytokines	IL-5				-0.43*		0.44*	-0.39#				
	IL-6				-0.47*		0.43*					
	TSLP				-0.53**		0.49*					
Soluble R	TREM-1		-0.42*		-0.39*				-0.45*	0.53**		
AutoAb	MPO				-0.37*					0.49**	0.44*	

719 **Note:** PROMs, patient-reported outcome measures; Pain Episode, Pain Episode
720 Frequency/Recency; MDT, mechanical detection threshold; MPT, mechanical pain
721 threshold; MTS, mechanical temporal summation; CPT, cold pain threshold; PPT,
722 pressure pain threshold; PPTol, pressure pain tolerance; Soluble R, soluble receptor;
723 AutoAb, autoantibody; MPO, myeloperoxidase. Spearman correlation analyses were
724 performed including age, gender and SCD genotype as covariables. * $p < 0.05$; ** $p <$

725 0.01, *** $p < 0.00$, # $p < 0.06$, a clear trend toward significance, &mediators with adjusted
726 $p < 0.05$ shown in Table 3.
727

728 **References**

- 729 1. R. E. Ware, M. de Montalembert, L. Tshilolo, M. R. Abboud, Sickle cell disease. *Lancet*
730 **390**, 311-323 (2017).
- 731 2. D. C. Rees, T. N. Williams, M. T. Gladwin, Sickle-cell disease. *Lancet* **376**, 2018-2031
732 (2010).
- 733 3. O. O. Ilesanmi, Pathological basis of symptoms and crises in sickle cell disorder:
734 implications for counseling and psychotherapy. *Hematol Rep* **2**, e2 (2010).
- 735 4. E. M. Novelli, M. T. Gladwin, Crises in Sickle Cell Disease. *Chest* **149**, 1082-1093
736 (2016).
- 737 5. D. S. Darbari, V. A. Sheehan, S. K. Ballas, The vaso-occlusive pain crisis in sickle cell
738 disease: Definition, pathophysiology, and management. *Eur J Haematol* **105**, 237-246
739 (2020).
- 740 6. K. Takaoka, A. C. Cyril, S. Jinesh, R. Radhakrishnan, Mechanisms of pain in sickle cell
741 disease. *Br J Pain* **15**, 213-220 (2021).
- 742 7. H. Tran, M. Gupta, K. Gupta, Targeting novel mechanisms of pain in sickle cell disease.
743 *Hematology Am Soc Hematol Educ Program* **2017**, 546-555 (2017).
- 744 8. S. K. Ballas, K. Gupta, P. Adams-Graves, Sickle cell pain: a critical reappraisal. *Blood*
745 **120**, 3647-3656 (2012).
- 746 9. V. Char et al., Aggregation of mononuclear and red blood cells through an
747 alpha4beta1-Lu/basal cell adhesion molecule interaction in sickle cell disease.
748 *Haematologica* **95**, 1841-1848 (2010).
- 749 10. B. E. Gee, O. S. Platt, Sickle reticulocytes adhere to VCAM-1. *Blood* **85**, 268-274 (1995).

- 750 11. C. C. Joneckis, R. L. Ackley, E. P. Orringer, E. A. Wayner, L. V. Parise, Integrin alpha 4
751 beta 1 and glycoprotein IV (CD36) are expressed on circulating reticulocytes in sickle
752 cell anemia. *Blood* **82**, 3548-3555 (1993).
- 753 12. J. E. Brittain, J. Han, K. I. Ataga, E. P. Orringer, L. V. Parise, Mechanism of CD47-
754 induced alpha4beta1 integrin activation and adhesion in sickle reticulocytes. *J Biol Chem*
755 **279**, 42393-42402 (2004).
- 756 13. A. Kumar, J. R. Eckmam, R. A. Swerlick, T. M. Wick, Phorbol ester stimulation increases
757 sickle erythrocyte adherence to endothelium: a novel pathway involving alpha 4 beta 1
758 integrin receptors on sickle reticulocytes and fibronectin. *Blood* **88**, 4348-4358 (1996).
- 759 14. M. Udani *et al.*, Basal cell adhesion molecule/lutheran protein. The receptor critical for
760 sickle cell adhesion to laminin. *J Clin Invest* **101**, 2550-2558 (1998).
- 761 15. W. El Nemer *et al.*, The Lutheran blood group glycoproteins, the erythroid receptors for
762 laminin, are adhesion molecules. *J Biol Chem* **273**, 16686-16693 (1998).
- 763 16. R. P. Hebbel, Adhesive interactions of sickle erythrocytes with endothelium. *J Clin Invest*
764 **100**, S83-86 (1997).
- 765 17. N. Conran, J. D. Belcher, Inflammation in sickle cell disease. *Clin Hemorheol Microcirc*
766 **68**, 263-299 (2018).
- 767 18. H. Elmariah *et al.*, Factors associated with survival in a contemporary adult sickle cell
768 disease cohort. *Am J Hematol* **89**, 530-535 (2014).
- 769 19. A. Turhan, L. A. Weiss, N. Mohandas, B. S. Collier, P. S. Frenette, Primary role for
770 adherent leukocytes in sickle cell vascular occlusion: a new paradigm. *Proc Natl Acad*
771 *Sci U S A* **99**, 3047-3051 (2002).
- 772 20. T. C. Hofstra, V. K. Kalra, H. J. Meiselman, T. D. Coates, Sickle erythrocytes adhere to
773 polymorphonuclear neutrophils and activate the neutrophil respiratory burst. *Blood* **87**,
774 4440-4447 (1996).

- 775 21. R. Zennadi, A. Chien, K. Xu, M. Batchvarova, M. J. Telen, Sickle red cells induce
776 adhesion of lymphocytes and monocytes to endothelium. *Blood* **112**, 3474-3483 (2008).
- 777 22. J. E. Brittain, C. M. Knoll, K. I. Ataga, E. P. Orringer, L. V. Parise, Fibronectin bridges
778 monocytes and reticulocytes via integrin alpha4beta1. *Br J Haematol* **141**, 872-881
779 (2008).
- 780 23. S. Allali, T. T. Maciel, O. Hermine, M. de Montalembert, Innate immune cells, major
781 protagonists of sickle cell disease pathophysiology. *Haematologica* **105**, 273-283 (2020).
- 782 24. R. Sesti-Costa *et al.*, Inflammatory Dendritic Cells Contribute to Regulate the Immune
783 Response in Sickle Cell Disease. *Front Immunol* **11**, 617962 (2020).
- 784 25. O. A. Adisa *et al.*, Association between plasma free haem and incidence of vaso-
785 occlusive episodes and acute chest syndrome in children with sickle cell disease. *Br J*
786 *Haematol* **162**, 702-705 (2013).
- 787 26. H. H. Al-Habboubi *et al.*, The relation of vascular endothelial growth factor (VEGF) gene
788 polymorphisms on VEGF levels and the risk of vasoocclusive crisis in sickle cell disease.
789 *Eur J Haematol* **89**, 403-409 (2012).
- 790 27. N. A. Redha, N. Mahdi, H. H. Al-Habboubi, W. Y. Almawi, Impact of VEGFA -583C > T
791 polymorphism on serum VEGF levels and the susceptibility to acute chest syndrome in
792 pediatric patients with sickle cell disease. *Pediatr Blood Cancer* **61**, 2310-2312 (2014).
- 793 28. A. L. Silva-Junior *et al.*, Immunological Hallmarks of Inflammatory Status in Vaso-
794 Occlusive Crisis of Sickle Cell Anemia Patients. *Front Immunol* **12**, 559925 (2021).
- 795 29. S. Curtis, A. M. Brandow, Responsiveness of Patient-Reported Outcome Measurement
796 Information System (PROMIS) pain domains and disease-specific patient-reported
797 outcome measures in children and adults with sickle cell disease. *Hematology Am Soc*
798 *Hematol Educ Program* **2017**, 542-545 (2017).
- 799 30. A. M. Brandow, R. A. Farley, J. A. Panepinto, Neuropathic pain in patients with sickle
800 cell disease. *Pediatr Blood Cancer* **61**, 512-517 (2014).

- 801 31. R. Freynhagen, R. Baron, U. Gockel, T. R. Tolle, painDETECT: a new screening
802 questionnaire to identify neuropathic components in patients with back pain. *Curr Med*
803 *Res Opin* **22**, 1911-1920 (2006).
- 804 32. D. J. Clauw, Fibromyalgia: a clinical review. *JAMA* **311**, 1547-1555 (2014).
- 805 33. J. Dudeney, E. F. Law, A. Meyyappan, T. M. Palermo, J. A. Rabbitts, Evaluating the
806 psychometric properties of the Widespread Pain Index and the Symptom Severity scale
807 in youth with painful conditions. *Can J Pain* **3**, 137-147 (2019).
- 808 34. C. M. Campbell *et al.*, An Evaluation of Central Sensitization in Patients With Sickle Cell
809 Disease. *J Pain* **17**, 617-627 (2016).
- 810 35. J. A. Panepinto *et al.*, PedsQL sickle cell disease module: feasibility, reliability, and
811 validity. *Pediatr Blood Cancer* **60**, 1338-1344 (2013).
- 812 36. D. S. Darbari *et al.*, Frequency of Hospitalizations for Pain and Association With Altered
813 Brain Network Connectivity in Sickle Cell Disease. *J Pain* **16**, 1077-1086 (2015).
- 814 37. Y. Wang *et al.*, Alteration of grey matter volume is associated with pain and quality of life
815 in children with sickle cell disease. *Transl Res* **240**, 17-25 (2022).
- 816 38. R. E. Miller *et al.*, Quantitative sensory testing in children with sickle cell disease:
817 additional insights and future possibilities. *Br J Haematol* **185**, 925-934 (2019).
- 818 39. D. S. Darbari *et al.*, Central sensitization associated with low fetal hemoglobin levels in
819 adults with sickle cell anemia. *Scand J Pain* **17**, 279-286 (2017).
- 820 40. H. Nahman-Averbuch *et al.*, The role of stimulation parameters on the conditioned pain
821 modulation response. *Scand J Pain* **4**, 10-14 (2013).
- 822 41. C. J. Schoen *et al.*, A novel paradigm to evaluate conditioned pain modulation in
823 fibromyalgia. *J Pain Res* **9**, 711-719 (2016).
- 824 42. F. Syed *et al.*, Excessive Matrix Metalloproteinase-1 and Hyperactivation of Endothelial
825 Cells Occurred in COVID-19 Patients and Were Associated With the Severity of COVID-
826 19. *J Infect Dis* **224**, 60-69 (2021).

- 827 43. R. Yoshimi, A. Ueda, K. Ozato, Y. Ishigatsubo, Clinical and pathological roles of Ro/SSA
828 autoantibody system. *Clin Dev Immunol* **2012**, 606195 (2012).
- 829 44. S. K. Reader *et al.*, Systematic Review: Pain and Emotional Functioning in Pediatric
830 Sickle Cell Disease. *J Clin Psychol Med Settings* **27**, 343-365 (2020).
- 831 45. V. Sagi, A. Mittal, H. Tran, K. Gupta, Pain in sickle cell disease: current and potential
832 translational therapies. *Transl Res* **234**, 141-158 (2021).
- 833 46. A. E. Alagbe, I. F. Domingos, A. D. Adekile, M. Blotta, M. N. N. Santos, Anti-
834 inflammatory cytokines in sickle cell disease. *Mol Biol Rep* **49**, 2433-2442 (2022).
- 835 47. A. Driss *et al.*, Elevated IL-1alpha and CXCL10 serum levels occur in patients with
836 homozygous sickle cell disease and a history of acute splenic sequestration. *Dis*
837 *Markers* **32**, 295-300 (2012).
- 838 48. R. B. Francis, Jr., L. J. Haywood, Elevated immunoreactive tumor necrosis factor and
839 interleukin-1 in sickle cell disease. *J Natl Med Assoc* **84**, 611-615 (1992).
- 840 49. O. T. Gbotosho, J. Gollamudi, H. I. Hyacinth, The Role of Inflammation in The Cellular
841 and Molecular Mechanisms of Cardiopulmonary Complications of Sickle Cell Disease.
842 *Biomolecules* **13** (2023).
- 843 50. B. Keikhaei *et al.*, Altered levels of pro-inflammatory cytokines in sickle cell disease
844 patients during vaso-occlusive crises and the steady state condition. *Eur Cytokine Netw*
845 **24**, 45-52 (2013).
- 846 51. M. H. Qari, U. Dier, S. A. Mousa, Biomarkers of inflammation, growth factor, and
847 coagulation activation in patients with sickle cell disease. *Clin Appl Thromb Hemost* **18**,
848 195-200 (2012).
- 849 52. A. Pathare *et al.*, Cytokine profile of sickle cell disease in Oman. *Am J Hematol* **77**, 323-
850 328 (2004).

- 851 53. T. M. Sakamoto *et al.*, Increased adhesive and inflammatory properties in blood
852 outgrowth endothelial cells from sickle cell anemia patients. *Microvasc Res* **90**, 173-179
853 (2013).
- 854 54. K. Asare *et al.*, Plasma interleukin-1beta concentration is associated with stroke in sickle
855 cell disease. *Cytokine* **49**, 39-44 (2010).
- 856 55. B. A. Cerqueira, W. V. Boas, A. D. Zanette, M. G. Reis, M. S. Goncalves, Increased
857 concentrations of IL-18 and uric acid in sickle cell anemia: contribution of hemolysis,
858 endothelial activation and the inflammasome. *Cytokine* **56**, 471-476 (2011).
- 859 56. N. Conran *et al.*, Inhibition of caspase-dependent spontaneous apoptosis via a cAMP-
860 protein kinase A dependent pathway in neutrophils from sickle cell disease patients. *Br J*
861 *Haematol* **139**, 148-158 (2007).
- 862 57. M. Zachlederova, P. Jarolim, The dynamics of gene expression in human lung
863 microvascular endothelial cells after stimulation with inflammatory cytokines. *Physiol Res*
864 **55**, 39-47 (2006).
- 865 58. N. Patel *et al.*, Placenta growth factor (PlGF), a novel inducer of plasminogen activator
866 inhibitor-1 (PAI-1) in sickle cell disease (SCD). *J Biol Chem* **285**, 16713-16722 (2010).
- 867 59. M. Lamkanfi, Emerging inflammasome effector mechanisms. *Nat Rev Immunol* **11**, 213-
868 220 (2011).
- 869 60. V. A. Rathinam, K. A. Fitzgerald, Inflammasome Complexes: Emerging Mechanisms and
870 Effector Functions. *Cell* **165**, 792-800 (2016).
- 871 61. F. Bauernfeind, V. Hornung, Of inflammasomes and pathogens--sensing of microbes by
872 the inflammasome. *EMBO Mol Med* **5**, 814-826 (2013).
- 873 62. K. Midtbo, D. Eklund, E. Sarndahl, A. Persson, Molecularly Distinct NLRP3 Inducers
874 Mediate Diverse Ratios of Interleukin-1beta and Interleukin-18 from Human Monocytes.
875 *Mediators Inflamm* **2020**, 4651090 (2020).

- 876 63. N. M. de Vasconcelos, M. Lamkanfi, Recent Insights on Inflammasomes, Gasdermin
877 Pores, and Pyroptosis. *Cold Spring Harb Perspect Biol* **12** (2020).
- 878 64. A. H. Chan, K. Schroder, Inflammasome signaling and regulation of interleukin-1 family
879 cytokines. *J Exp Med* **217** (2020).
- 880 65. T. Satoh, A. Otsuka, E. Contassot, L. E. French, The inflammasome and IL-1beta:
881 implications for the treatment of inflammatory diseases. *Immunotherapy* **7**, 243-254
882 (2015).
- 883 66. M. C. Durpes *et al.*, Effect of interleukin-8 and RANTES on the Gardos channel activity
884 in sickle human red blood cells: role of the Duffy antigen receptor for chemokines. *Blood*
885 *Cells Mol Dis* **44**, 219-223 (2010).
- 886 67. M. C. Durpes *et al.*, Activation state of alpha4beta1 integrin on sickle red blood cells is
887 linked to the duffy antigen receptor for chemokines (DARC) expression. *J Biol Chem*
888 **286**, 3057-3064 (2011).
- 889 68. D. Bratosin *et al.*, Programmed cell death in mature erythrocytes: a model for
890 investigating death effector pathways operating in the absence of mitochondria. *Cell*
891 *Death Differ* **8**, 1143-1156 (2001).
- 892 69. E. Nader, M. Romana, P. Connes, The Red Blood Cell-Inflammation Vicious Circle in
893 Sickle Cell Disease. *Front Immunol* **11**, 454 (2020).
- 894 70. T. Jang *et al.*, Vaso-occlusive crisis in sickle cell disease: a vicious cycle of secondary
895 events. *J Transl Med* **19**, 397 (2021).
- 896 71. A. U. Zaidi *et al.*, A systematic literature review of frequency of vaso-occlusive crises in
897 sickle cell disease. *Orphanet J Rare Dis* **16**, 460 (2021).
- 898 72. S. Veluswamy *et al.*, Vaso-Occlusion in Sickle Cell Disease: Is Autonomic Dysregulation
899 of the Microvasculature the Trigger? *J Clin Med* **8** (2019).
- 900 73. M. Shimizu, S. Takei, M. Mori, A. Yachie, Pathogenic roles and diagnostic utility of
901 interleukin-18 in autoinflammatory diseases. *Front Immunol* **13**, 951535 (2022).

- 902 74. D. Pilat *et al.*, Blockade of IL-18 signaling diminished neuropathic pain and enhanced the
903 efficacy of morphine and buprenorphine. *Mol Cell Neurosci* **71**, 114-124 (2016).
- 904 75. M. Garzon-Tituana *et al.*, Granzyme A inhibition reduces inflammation and increases
905 survival during abdominal sepsis. *Theranostics* **11**, 3781-3795 (2021).
- 906 76. R. R. da Silva *et al.*, Evaluation of Th17 related cytokines associated with clinical and
907 laboratorial parameters in sickle cell anemia patients with leg ulcers. *Cytokine* **65**, 143-
908 147 (2014).
- 909 77. G. Ndrepepa, Myeloperoxidase - A bridge linking inflammation and oxidative stress with
910 cardiovascular disease. *Clin Chim Acta* **493**, 36-51 (2019).
- 911 78. H. Zhang *et al.*, Inhibition of myeloperoxidase decreases vascular oxidative stress and
912 increases vasodilatation in sickle cell disease mice. *J Lipid Res* **54**, 3009-3015 (2013).
- 913 79. A. M. Brandow *et al.*, Children and adolescents with sickle cell disease have worse cold
914 and mechanical hypersensitivity during acute painful events. *Pain* **160**, 407-416 (2019).
- 915 80. P. Chalacheva *et al.*, Autonomic responses to cold face stimulation in sickle cell disease:
916 a time-varying model analysis. *Physiol Rep* **3** (2015).
- 917 81. P. Shah *et al.*, Mental stress causes vasoconstriction in subjects with sickle cell disease
918 and in normal controls. *Haematologica* **105**, 83-90 (2020).
- 919 82. M. J. Telen *et al.*, Alloimmunization in sickle cell disease: changing antibody specificities
920 and association with chronic pain and decreased survival. *Transfusion* **55**, 1378-1387
921 (2015).
- 922 83. T. Wun, The Role of Inflammation and Leukocytes in the Pathogenesis of Sickle Cell
923 Disease; Haemoglobinopathy. *Hematology* **5**, 403-412 (2001).
- 924