

1 **Title: The pivotal role of the X-chromosome in the genetic architecture of the**  
2 **human brain**

3  
4 **Authors:** Zhiwen Jiang<sup>1</sup>, Patrick F. Sullivan<sup>2</sup>, Tengfei Li<sup>3,4</sup>, Bingxin Zhao<sup>5,6</sup>, Xifeng Wang<sup>1</sup>, Tianyou  
5 Luo<sup>1</sup>, Shuai Huang<sup>1</sup>, Peter Y. Guan<sup>1</sup>, Jie Chen<sup>1</sup>, Yue Yang<sup>1</sup>, Jason L. Stein<sup>2,7</sup>, Yun Li<sup>1,2,8</sup>, Dajiang Liu<sup>9,10</sup>,  
6 Lei Sun<sup>11,12</sup>, and Hongtu Zhu<sup>1,2,4,8,13\*</sup>  
7

8 **Affiliations:**

9 <sup>1</sup>Department of Biostatistics, University of North Carolina at Chapel Hill, Chapel Hill, NC 27599, USA.

10 <sup>2</sup>Department of Genetics, University of North Carolina at Chapel Hill, Chapel Hill, NC 27599, USA.

11 <sup>3</sup>Department of Radiology, University of North Carolina at Chapel Hill, Chapel Hill, NC 27599, USA.

12 <sup>4</sup>Biomedical Research Imaging Center, School of Medicine, University of North Carolina at Chapel Hill,  
13 Chapel Hill, NC 27599, USA.

14 <sup>5</sup>Department of Statistics and Data Science, University of Pennsylvania, Philadelphia, PA 19104, USA.

15 <sup>6</sup>Department of Statistics, Purdue University, West Lafayette, IN 47907, USA.

16 <sup>7</sup>UNC Neuroscience Center, University of North Carolina at Chapel Hill, Chapel Hill, NC 27599, USA.

17 <sup>8</sup>Department of Computer Science, University of North Carolina at Chapel Hill, Chapel Hill, NC 27599,  
18 USA.

19 <sup>9</sup>Department of Public Health Sciences, Penn State University, Hershey, PA 17033, USA.

20 <sup>10</sup>Department of Biochemistry and Molecular Biology, Penn State University, Hershey, PA 17033, USA.

21 <sup>11</sup>Department of Statistical Sciences, University of Toronto, Toronto, ON M5G 1Z5, Canada.

22 <sup>12</sup>Division of Biostatistics, Dalla Lana School of Public Health, University of Toronto, Toronto, ON M5T  
23 3M7, Canada.

24 <sup>13</sup>Department of Statistics and Operations Research, University of North Carolina at Chapel Hill, Chapel  
25 Hill, NC 27599, USA.

26  
27 \*Corresponding author. Email: htzhu@email.unc.edu  
28

29 **Abstract:** Genes on the X-chromosome are extensively expressed in the human brain. However, little is  
30 known for the X-chromosome's impact on the brain anatomy, microstructure, and functional network. We  
31 examined 1,045 complex brain imaging traits from 38,529 participants in the UK Biobank. We unveiled  
32 potential autosome-X-chromosome interactions, while proposing an atlas outlining dosage compensation  
33 (DC) for brain imaging traits. Through extensive association studies, we identified 72 genome-wide  
34 significant trait-locus pairs (including 29 new associations) that share genetic architectures with brain-  
35 related disorders, notably schizophrenia. Furthermore, we discovered unique sex-specific associations and  
36 assessed variations in genetic effects between sexes. Our research offers critical insights into the X-  
37 chromosome's role in the human brain, underscoring its contribution to the differences observed in brain  
38 structure and functionality between sexes.  
39

40 **One-sentence Summary:** We investigated the genetic impact of the X-chromosome and the sex  
41 differences in the human brain.

1 The genetic foundations governing gene regulation on the X-chromosome are inherently complex due to  
2 the XY sex-determination system (1). In genetic females, who have two X-chromosomes compared to the  
3 single X-chromosome in males, one X-chromosome is inactivated. This inactivation occurs either  
4 randomly or with a bias towards a specific parental copy, aiming to balance the transcriptional dosages of  
5 X-linked genes between the sexes (2, 3). This process, known as X-chromosome inactivation (XCI),  
6 facilitates dosage compensation (DC), ensuring that females are cellular mosaics with cells expressing  
7 one of the two possible active X-chromosomes (4). However, DC is not complete, with only  
8 approximately 60-75% of X-linked genes fully silenced (5), and this process may vary across different  
9 tissues (6, 7). As a result, several factors, including DC itself and the differential expression of parent-of-  
10 origin genes, significantly influence X-linked gene expression in females (8). Notably, in both sexes, the  
11 expression levels of genes on the active X-chromosome can be increased to align with those of autosomal  
12 genes – a principle known as Ohno’s hypothesis (9). This compensatory upregulation of X-linked genes  
13 has been observed across various species, including human (10) and mouse (10-12), indicating a  
14 widespread evolutionary strategy for gene expression balance.

15  
16 The X-chromosome harbors a significant number of genes with predominant expression in brain tissues  
17 (10, 13), as evidenced by the X-chromosome to autosome expression ratio exceeding one (10). This  
18 highlights the X-chromosome's crucial impact on brain anatomy, connectivity, and functionality (14-17).  
19 Compelling evidence has shown the X-chromosome profoundly influences a wide range of neurological  
20 diseases and psychiatric disorders from both genetic and epigenetic viewpoints (5, 18-20). For instance,  
21 X-linked intellectual disability is a prominently studied brain disorder with 162 related genes identified by  
22 2022 (21). Remarkably, the density of genes associated with intellectual disability on the X-chromosome  
23 is twice that found on autosomes (21). Chromosome mutations, such as sex chromosome aneuploidy, can  
24 significantly affect brain structures (14, 22), cognitive functions (23, 24), behaviors (24), and both  
25 neurological (24, 25) and psychiatric disorders (26, 27). A combination of factors, including the high  
26 concentration of relevant genes, varying gene expression between sexes, and the influence of epigenetic  
27 processes driven by sex steroid hormones, establish the X-chromosome as a nexus for sex differences in  
28 the human brain across various age groups (4, 7, 8, 28-33). Despite its critical importance, the X-  
29 chromosome is frequently overlooked in genome-wide association studies (GWAS), a point underscored  
30 by research from Wise et al. (34) and Sun. et al. (35).

31  
32 Previous studies have laid foundational work in exploring the genetic contributions of the X-chromosome  
33 to brain structures and functions. Smith et al. (17) conducted a GWAS analyzing 3,144 complex brain  
34 imaging traits in 22,138 subjects. They identified four genome-wide significant loci on the X-  
35 chromosome, each with a top single-nucleotide polymorphism (SNP) achieving a p-value less than  
36  $7.94 \times 10^{-12}$ . They further characterized the genetic loci using expression quantitative trait loci (eQTLs)  
37 and examined the genetic co-architectures between brain traits and various health-related conditions. On a  
38 different note, Mallard et al. (16) examined DC for regional brain measurements, including brain volumes  
39 (BVs), cortical thickness (CT), and surface area (SA). Their research highlighted a significant enrichment  
40 of X-linked heritability on specific regions of interest (ROIs) within the SA and delved into the genetic  
41 basis of these ROIs through an X-chromosome-wide association study (XWAS) (36). However, the study  
42 by Smith et al. (17) was constrained by a smaller discovery sample size than what is now available, while  
43 Mallard et al.’s investigation was restricted to brain anatomy. More importantly, there is still a  
44 considerable gap in our understanding of the DC profile for brain connectivity and functionality, and the  
45 degree to which sex differences in the human brain are modulated by the X-chromosome.

46  
47 To comprehensively evaluate the X-chromosome's role in the human brain, we amassed 1,045 complex  
48 brain imaging traits derived from structural magnetic resonance imaging (sMRI) for brain anatomical  
49 measures, diffusion MRI (dMRI) for white matter (WM) microstructure, and resting-state and task-  
50 evoked functional MRI (rfMRI and tfMRI, respectively) for intrinsic and extrinsic brain functions (Table  
51 S1). Specifically, we collected 230 sMRI traits encompassing BV, CT, and SA, 635 dMRIs traits

1 covering five diffusion parameters, the fractional anisotropy (FA), mean diffusivity (MD), axial  
2 diffusivity (AD), radial diffusivity (RD), and mode of anisotropy (MO) (hereafter DTI traits), and 180  
3 rfMRI and tfMRI traits including the network-level functional amplitude and connectivity. For each  
4 diffusion parameter, we derived both the mean value and the top five functional principal components  
5 (PCs) within each tract, and the overall average across 21 WM tracts. The tract-mean traits provide  
6 average diffusivity metrics of the tracts, while the PC traits capture the finer details and diffusivity  
7 heterogeneity within the tract (37). Additionally, rfMRI and tfMRI traits were generated using the  
8 Glasser360 (38) atlas among 12 networks. Further details are provided in the Methods section. The  
9 reliability and reproducibility of all traits have been verified in our preceding studies (37, 39-41).

10  
11 An overview of the study design is illustrated in Fig. 1. We first assessed the DC status of each brain  
12 imaging trait through model selection, focusing on the narrow-sense heritability associated with the non-  
13 pseudo-autosomal region (NPR) SNPs on the X-chromosome via a sex-agnostic analysis. Subsequently,  
14 we developed a comprehensive DC atlas for every trait category. In association analysis, we examined  
15 both NPR and pseudo-autosomal region (PAR) SNPs on the X-chromosome. Remarkably, we discovered  
16 genetic overlaps between the brain imaging traits and various brain-related disorders/phenotypes. Our  
17 further explorations delved into sex differences, scrutinizing aspects such as phenotype, heritability,  
18 genetic associations, and genetic effects. These explorations have yielded critical insights into the genetic  
19 determinants of sex-specific variations in brain structure and functionality. Through this research, we aim  
20 to augment the comprehension of the X-chromosome's contribution to human brain function and  
21 development. Our findings will pave the way for enriching future endeavors in biology, clinical sciences,  
22 and psychiatry.

## 23 24 **Results**

### 25 ***Dosage compensation in the X-chromosome***

26 We determined a global DC for each trait through model selection. This global DC is not specific to a  
27 gene, but reflects an aggregate effect of all the X-linked genes, deriving from the best model to estimate  
28 X-linked narrow-sense heritability. Specifically, we utilized three distinct model specifications – full DC,  
29 no DC, and equal variance – to jointly estimate the heritability ascribed to autosomes ( $h_a^2$ ) and the  
30 heritability credited to the NPR on the X-chromosome ( $h_x^2$ ) using GCTA (42) (Methods). In these models,  
31 a female's genetic profile is always coded as (0, 1, 2), but a male's genetic profile is coded as (0, 2) for  
32 full DC (known as random X-inactivation (43)); in no DC, a male's profile is coded as (0, 1); and in the  
33 equal variance model, it is coded as (0,  $\sqrt{2}$ ). These models illustrate the differing genetic variance  
34 between sexes, as males exhibit twice the genetic variance of females in full DC, half in no DC, and  
35 identical in the equal variance model. For each trait, the model exhibiting the lowest Akaike information  
36 criterion (AIC) was selected as the best model. Given that the heritability linked to the X-chromosome  
37 depends on the inactivation status of X-linked loci influencing a trait (42, 44), accurately determining the  
38 DC status for each trait allows us to more precisely estimate X-linked heritability, as well as boosting the  
39 statistical power of our association analysis.

40  
41 Our analysis revealed 1,039 out of 1,045 traits (99.4%) exhibited significant total heritability ( $h_a^2 + h_x^2$ ),  
42 after adjusting for multiple comparisons by controlling the false discovery rate (FDR) at the 0.05 level.  
43 Specifically, 819 (78.4%) traits showed a preference for full DC, 187 traits (17.9%) for no DC, and 39  
44 traits (3.7%) for equal variance. Fig. 2A illustrates the DC distribution across each trait category (detailed  
45 in Table S2), while Fig. S1 and S2 depict the strength of the preferred DC model for sMRI and DTI tract-  
46 mean traits, respectively. The MO, CT (16), and AD traits exhibited the highest inclination towards no  
47 DC. For traits favoring full DC, no DC, and equal variance, the average  $h_x^2$  estimates were 1.0% (se =  
48 0.34%), 1.5% (se = 0.63%) and 0.52% (se = 0.44%), respectively (Fig. 2B). The variation in  $h_x^2$  estimates  
49 across the three DC categories was statistically significant (Wilcoxon rank sum test, pairwise p-values <  
50  $1.8 \times 10^{-6}$ ). Higher  $h_x^2$  estimates are reasonable for traits favoring no DC, as the lack of XCI leads to an

1 increased gene expression dosage, thereby enhancing the X-chromosome's influence on genetic  
2 regulation.

3  
4 Furthermore, our analysis discovered that traits favoring full DC on the X-chromosome exhibited a  
5 greater  $h_a^2$  estimate compared to those favoring no DC (Wilcoxon rank sum test, pairwise p-value =  
6 0.006, Fig. 2C). However, no significant difference was observed between traits with full DC and those  
7 with equal variance (p-values = 0.22), likely due to the small number of traits with equal variance.  
8 Specifically, the average  $h_a^2$  estimate for full DC traits was 34.2%, for no DC traits was 29.7%, and for  
9 equal variance traits was 30.1%. This differentiation in  $h_a^2$  was not attributed to estimation bias, as  $h_a^2$   
10 estimates across different DC models were consistent for any given trait. (Fig. S3). The observed  
11 differences indicate that  $h_a^2$  is correlated with the DC status, potentially hinting at autosome-X-  
12 chromosome interactions. For example, DNA methylation on autosomes might be *trans* regulated by the  
13 X-chromosome (45). Moreover, it implies that traits associated with no DC may be more susceptible to  
14 non-genetic influences, including environmental factors.

15  
16 Distinct patterns of DC were discerned across measurements of brain anatomy. Notably, all SA traits  
17 favored full DC, while nearly all BV traits showed the same preference, except for the optic chiasm. In  
18 contrast, CT traits presented a more varied DC pattern as approximately half of the traits tended towards  
19 either no DC or equal variance. While the mean CT still favored full DC, those preferring no DC were  
20 distributed across a wide range of cortical regions (Fig. 3A). Despite different preprocessing for raw  
21 images, our discoveries resonated with the patterns previously identified by Mallard et al. (16).  
22 Additionally, existing literature posits that the CT of the motor cortex may be influenced by genes that  
23 escape inactivation (46). Our findings supported this, as the CT for both the precentral and postcentral  
24 cortex (located near the motor cortex) showed patterns consistent with no DC.

25  
26 When assessing WM tracts, MO traits predominantly showed a preference for no DC, whereas RD traits  
27 largely favored full DC (Fig. 3B for the DC atlas of MO and Fig. S4 for other DTI metrics). Specifically,  
28 MO traits exhibited 51 instances of no DC, while such instances were less than 25 in other metrics (Fig.  
29 S5). Notably, all five PCs of MO associated with key WM tracts – the anterior limb of the internal  
30 capsule, the corticospinal tract, and the splenium of corpus callosum – uniformly favored no DC (Fig.  
31 S5D). This pattern suggests a significant influence of X-escapee genes on microstructures of these tracts.

32  
33 In our study, rfMRI and tfMRI traits that favored no DC were predominantly associated with the primary  
34 and secondary visual networks, as well as the default mode network (Fig. 3C). For instance, the majority  
35 of mean connectivity traits, both between and within the visual networks, exhibited a preference for no  
36 DC across both rfMRI and tfMRI modalities. We noted that the secondary visual network showed a  
37 partial overlap with the superior temporal areas, while the default mode network overlapped with the  
38 superior temporal, caudal middle frontal, and rostral middle frontal regions. Intriguingly, CT of these  
39 ROIs also favored no DC. Such findings underscore a possible connection between the regional structures  
40 of the cerebral cortex and the functional networks.

#### 41 ***X-linked heritability for complex brain imaging traits***

42 We jointly estimated  $h_a^2$  and  $h_x^2$  via the GREML analysis of GCTA (42) based on the optimal DC model  
43 for each trait. Of the total 1,045 traits, 760 (72.7%) traits displayed significant  $h_x^2$  estimates with an  
44 average  $h_x^2$  of 1.3% (se = 0.4%) by controlling FDR at the 0.05 level (Fig. 2D-F and Table S2). BV and  
45 SA traits predominantly showed high heritability, followed by DTI tract-mean traits and rfMRI traits,  
46 whereas tfMRI showcased the fewest proportion (47%) with significant  $h_x^2$  estimates.

47  
48  
49 We evaluated the enrichment of  $h_x^2$  by contrasting the observed  $h_x^2$  against the expected  $h_x^2$  for a genome  
50 segment of an equivalent size (Methods). This analysis revealed that 30 traits (2.9%) displayed  $h_x^2$

1 enrichment, while 411 traits (39.3%) exhibited  $h_X^2$  depletion (Fig. S6A-C and Table S2), with the rest  
2 showing no significant deviation from expectation. The mean  $h_X^2$  estimate varied significantly across  
3 enrichment groups (Wilcoxon rank sum test, pairwise p-values  $< 4.1 \times 10^{-8}$ , Fig. S6D). Notably, SA  
4 (hypergeometric test, p-value = 0.0019  $< 0.05/22$ ) and rfMRI (p-value = 0.00055) were disproportionately  
5 represented in  $h_X^2$  enrichment, while FA (p-value =  $7.0 \times 10^{-7}$ ) and tract-mean traits (p-value =  
6  $6.3 \times 10^{-26}$ ) displayed overrepresentation in depletion. The observed scarcity of traits with enriched  $h_X^2$   
7 can be attributed to male haploidy and the phenomenon of random XCI in females (44), as both factors  
8 reduce the genetic variance from the X-chromosome.

9  
10 The X-chromosome profoundly impacts variations in brain anatomy. Among the 230 traits examined, 179  
11 showed significant  $h_X^2$  estimates, with an average  $h_X^2$  estimate of 1.7% (se = 0.38%). The findings on  $h_X^2$   
12 and  $h_a^2$  estimates for total BV, mean CT, and total SA echoed results from previous studies (16, 39, 47,  
13 48). Interestingly, while no BV traits showed significant enrichment in  $h_X^2$ , one CT trait (left caudal  
14 middle frontal) and seven SA traits were identified as significantly enriched (Fig. S7). The left caudal  
15 middle frontal region showcased the highest  $h_X^2$  of 3.1% in CT traits, with the X-chromosome accounting  
16 for over 14% of total heritability.

17  
18 Distinctive patterns of  $h_X^2$  were observed between CT traits and those related to BV and SA. The average  
19  $h_X^2$  for BV and SA traits were double that of CT traits. Additionally, while the correlations of  $h_a^2$  between  
20 left and right hemispheres traits were comparable across BV, CT, and SA (Fig. S8A-C), the correlations  
21 in  $h_X^2$  varied significantly. BV traits demonstrated the highest correlation ( $r = 0.81$ , p-value =  
22  $2.1 \times 10^{-11}$ ), followed by SA traits ( $r = 0.59$ , p-value = 0.0003) and CT traits showed the lowest  
23 correlation ( $r = 0.21$ , p-value = 0.20) (Fig. S8D-F), despite similar standard errors in  $h_X^2$  estimates across  
24 these anatomical features (se = 0.36%~0.40%). These findings underscore a more pronounced genetic  
25 influence of the X-chromosome on BV and SA, with its impact on CT exhibiting greater variability  
26 between hemispheres and a more complex DC pattern. This indicates that CT may be subject to unique  
27 biological processes during brain development, distinct from those affecting BV and SA (30, 49).

28  
29 The corticospinal tract exhibited distinct DC and heritability enrichment patterns than other WM tracts. It  
30 was consistently favoring no DC across all DTI metrics and their PCs. Remarkably, out of the ten  
31 functional PC traits enriched in  $h_X^2$ , six were associated with the corticospinal tract (Fig. S9). The  $h_X^2$  of  
32 the fourth PC of the corticospinal tract, evaluated by AD, MD and RD, represented over 80% of the total  
33 heritability for these traits, yielding an enrichment ratio nearing 20 (Fig. S6B). This pronounced X-  
34 chromosomal influence, coupled with its relatively lower overall heritability compared to other tracts,  
35 may contribute to a deeper understanding of the sex differences observed in the development of the  
36 corticospinal tract (50, 51). Additional findings indicate that an increased dosage from the X-chromosome  
37 may significantly reduce the white matter volume within the corticospinal tract (14). More extensive  
38 analyses regarding the heritability of DTI traits can be found in the Supplementary Text.

39  
40 While rfMRI and tfMRI exhibited analogous DC patterns, the distribution of  $h_X^2$  was notably different. The  
41 correlation between  $h_X^2$  estimates for rfMRI and tfMRI was negligible ( $r = 0.09$ , p-value = 0.41), in  
42 contrast to a moderate correlation for  $h_a^2$  ( $r = 0.34$ , p-value = 0.001). Specifically, in rfMRI, nine  
43 connectivity traits exhibited enrichment in  $h_X^2$ , and three of them related to connectivity within the visual  
44 networks showcased substantial heritability ( $h_X^2 = 2.7\%$ ), while the corresponding heritability was only  
45 0.5% in tfMRI. Moreover, only three tfMRI connectivity traits related to the language and posterior-  
46 multimodal networks were significantly enriched in  $h_X^2$  with a mean estimate 1.9%, and these did not  
47 overlap with the enriched traits identified in rfMRI (Fig. S10). Taken together, the X-chromosome  
48 displayed distinct genetic regulations on the intrinsic and extrinsic brain functions.

### ***Genetic loci on the X-chromosome associated with complex brain imaging traits.***

We carried out XWAS on 33,591 subjects from UKB phase 1-3, analyzing 1,045 complex brain imaging traits against 300,000 SNPs on the X-chromosome using PLINK2 (52). This included 289,000 NPR SNPs and 11,000 PAR SNPs post-imputation. The specific sample sizes and SNP counts for each trait are detailed in Table S3. For NPR SNPs, we determined the best DC model for each trait following the model selection results. Due to the unavailability of the equal variance model in PLINK2 (where the two male hemizygous genotypes coded as 0 and  $\sqrt{2}$ ), we defaulted to the full DC model (with males coded as 0 and 2) for traits favoring equal variance. Association analysis for PAR SNPs proceeded as with autosomal SNPs. To accurately calibrate the null distribution for correlated test statistics, we employed wild bootstrap technique (53), allowing for accurate control of multiple comparisons across the extensive trait analysis (Supplementary Text).

At the genome-wide threshold of  $5 \times 10^{-8}$ , we identified 29 top NPR SNPs (linkage disequilibrium (LD)  $r^2 < 0.1$ ), across eight genomic regions (Xp11.4, Xp21.3, Xp22.11, Xp22.12, Xp22.2, Xq13.1, Xq26.3, and Xq28). These SNPs were associated with 72 different brain imaging traits (6 BV, 7 SA, 5 AD, 7 FA, 13 RD, 4 MO, 10 MD, 35 tract-mean, and 1 rfMRI), resulting in a total of 72 trait-locus association pairs (Table S4 and S5, Fig. 4A). The significant associations were disproportionately enriched in the Xq28 region (58 out of 72, proportion test against the proportion of Xq28 in the X-chromosome, p-value  $< 2.2 \times 10^{-16}$ ), which was linked to SA and a wide range of tract measures. We did not identify any significant locus in PARs (PAR1 and PAR2 at the two ends of the X-chromosome). Lookups in NHGRI-EBI GWAS catalog (54) revealed 29 novel trait-locus association pairs (Table 1). We found evidence that some top SNPs were related to brain structures in previous studies. For instance, rs2272737 was associated with a variety of DTI measures (17); rs12843772 was associated with BV, cortical areas (17), and brain shape (55).

To ensure the robustness of our XWAS findings, we verified the XWAS results from two aspects considering the unique features of the X-chromosome. First, we estimated genetic effects separately for males and females in a sex-stratified analysis, followed by a meta-analysis via METAL (Methods). The majority (63 out of 72) of significant trait-locus pairs were also discovered in the meta-analysis, with three additional ones emerging exclusively through the meta-analysis (Table S6). Second, we conducted replication XWAS analysis using separate datasets in UKB: phase 4 subjects with European ancestry (UKBE,  $n = 4,181$ ), phase 1-4 subjects with South Asian ancestry and Chinese ancestry (UKBSAC,  $n = 462$ ), and phase 1-4 subjects with African ancestry (UKBA,  $n = 295$ ), to validate our discoveries (Table S7). All 72 index SNPs displayed consistent effect sizes between discovery and replication studies using UKBE (proportion test against 0.5, p-value  $< 2.2 \times 10^{-16}$ ). Out of 72 index SNPs, 10 (13.9%) were replicated at a conservative Bonferroni threshold (p-value  $< 0.05/72 = 0.0007$ ). However, replication was not achieved for the UKBSAC and UKBA groups, likely due to their smaller sample sizes.

Further meta-analysis across these ethnic groups (total  $n = 4,938$ ) allowed for the replication of 23 (31.9%) index SNPs at the same Bonferroni threshold, with the effect direction for each replicated SNP remaining consistent across ancestry groups. Finally, we meta-analyzed the XWAS results of phase 1-3 and phase 4 for European subjects ( $n = 37,772$ ) and identified 104 significant trait-locus pairs. Among them, 33 novel associations were not identified in the discovery phase, highlighting new genomic regions Xp11.23 and Xq21.1 (Table S8).

### ***Shared genetic architectures with brain-related disorders and other phenotypes***

The identified loci constructed genetic connections between complex brain imaging traits and a broad spectrum of neurological diseases, psychiatric disorders, and cognitive functions, among others (Table S9). Notably, the volume of the right ventral diencephalon (known as hypothalamus) was significantly associated with rs2361468 at Xq13.1, where it tagged numerous variants in LD that have been linked to

1 schizophrenia (56-59). Additionally, another SNP rs62606709 at the same locus has been associated with  
2 educational attainment (60) (Fig. 4B). The Xq13.1 region is enriched with variants implicated in  
3 neuroticism (18) and a variety of neuropsychiatric disorders, including schizophrenia (61, 62), autism  
4 spectrum disorder (ASD) (62, 63), bipolar disorder (BD) (62), major depressive disorder (MDD) (62) and  
5 Parkinson's disease (PD) (64). Through further literature review, we found more evidence supporting the  
6 association between the volume of the ventral diencephalon and various neuropsychiatric and  
7 neurological disorders. For instance, ventral diencephalon is implicated in many pathways found  
8 disrupted in schizophrenia (65) and enlargement of ventral diencephalon was observed in patients with  
9 schizophrenia (66) and MDD (67). Conversely, atrophy in the ventral diencephalon has been linked to  
10 AD (68, 69), MDD (70-72), late-life depression (73), PD (74), and spinocerebellar ataxias (SCA3) (75).

11  
12 Apart from brain-related disorders, we also identified colocalizations between brain imaging traits and  
13 various conditions and health-related traits (Table S9). In Xq26.3, the genetic loci associated with SA of  
14 supramarginal influenced the onset of myopia (76) and refractive error (77). Meanwhile, the genetic loci  
15 associated with DTI traits in Xq28 were connected to testosterone levels (78, 79), type 2 diabetes (80-84),  
16 blood-related traits including hemoglobin (85), hematocrit (85), red blood cell count (85), serum uric acid  
17 levels (86), serum creatinine levels (86), blood urea nitrogen levels (86), and factor VIII levels (87), as  
18 well as cardiovascular disorders, such as venous thromboembolism (88). These discoveries highlighted  
19 the X-chromosome's significant role in influencing both brain-related and systemic health outcomes.

#### 20 21 ***eQTL mapping and biological annotation***

22 We conducted eQTL mapping to investigate the functionality of the significant independent SNPs (LD  
23  $r^2 < 0.6$ ) and focused on the connections with neuropsychiatric disorders (Methods, Table S10). External  
24 eQTL datasets from the Genotype-Tissue Expression (89) (GTEx v8) and CommonMind Consortium (20)  
25 (CMC) were employed. This analysis underscored significant eQTLs in Xq28 associated with  
26 schizophrenia. Notably, rs4370701, an eQTL for *FAM3A* affecting gene expression in the cerebellum,  
27 cortex, and hypothalamus, was associated with the left total SA. Mutations in *FAM3A* have been linked to  
28 schizophrenia (58). Additionally, our analysis reaffirmed the association between rs2361468 at Xq13.1  
29 and the volume of the right ventral diencephalon. This variant was also found to regulate gene expression  
30 of *PJAI*, whose mutations have been implicated in increasing the risk for schizophrenia (59) and other  
31 neuropsychiatric disorders (62). To further explore the genetic associations from different aspects, we  
32 conducted additional gene-based and gene-set analysis, and gene mapping based on functional  
33 consequences using FUMA (Methods). The detailed results are presented in the Supplementary Text.

34  
35 Through eQTL mapping, we have linked the significant variants to gene expression levels, but the causal  
36 influence of gene expression on the brain traits remained ambiguous. We employed summary statistics-  
37 based Mendelian randomization (SMR) (90) to investigate whether XWAS traits could be modulated by  
38 gene expression. We further used the HEIDI test (90) to distinguish pleiotropy of causal variants from  
39 linkage (Methods). The eQTL data containing NPR SNPs across 1,639 probes was incorporated from  
40 Sidorenko et al.'s (44) CAGE whole-blood analysis. Upon adjusting for FDR at the 0.05 level, 14 genes  
41 were identified as having potential causal effects on the structural and functional brain traits (Table S11).  
42 Applying the threshold  $p\text{-HEIDI} > 0.05$  (90) to filter out linkage from pleiotropy of causal variants, 12  
43 associations indicative of SNPs that concurrently influence gene expression and brain traits.

44  
45 Among these, five genes identified through eQTL mapping – *FAM3A*, *PJAI*, *TMLHE*, *PLXNA3*, and  
46 *ZNF275* – were also found to have causal impacts on the brain imaging traits. We have previously  
47 illustrated the connections between *FAM3A*, *PJAI* and schizophrenia. Additionally, the nondysmorphic  
48 autism-linked gene *TMLHE* (91, 92) exerted a causal effect on AD of the posterior thalamic radiation, the  
49 BV of the right ventral diencephalon, and multiple SA traits. The ASD-linked gene *PLXNA3* was found to  
50 influence the MO of the posterior corona radiata (93). These findings reinforce the genetic interplay  
51 between schizophrenia, autism, and brain imaging traits.

1  
2 Finally, we conducted biological annotation using the DAVID Bioinformatics Database (94) and SynGO  
3 on all the prioritized genes identified by FUMA (Methods). Within DAVID, 182 genes underwent  
4 cataloging and subsequent analysis (Table S12). At the FDR threshold of 0.05, the genes were enriched in  
5 transcription elongation (IPR021156 and PIRSF008633) and were associated with diseases such as autism  
6 (KW-1269) and intellectual disability (KW-0991). At the nominal significance level (p-value < 0.05),  
7 these genes were enriched in biological pathways, including “axon development” (GO:0061564),  
8 “neurogenesis” (UP\_KW-0964), and “nervous system development” (GO:0007399). Through SynGO  
9 analysis (Fig. S11 and Table S13), 14 genes were uniquely mapped to SynGO-annotated genes, and 11  
10 genes received cellular component annotations: four were postsynaptic, two as both pre- and postsynaptic,  
11 three as presynaptic, and two could not be mapped to any specific compartment.  
12

### 13 ***Disparity of genetic associations between sexes***

14 We uncovered substantial differences between sexes across a wide array of brain imaging traits (Table  
15 S14). A striking 88.0% of analyzed traits showed significant phenotypic sex differences after adjusting for  
16 the FDR level of 0.05. More detailed results for distribution of phenotypic differences across imaging  
17 modalities and the relationship between DC,  $h_X^2$  and phenotypic differences are presented in the  
18 Supplementary Text. Further, in the sex-stratified analysis of heritability (Methods), 155 traits  
19 demonstrated significant  $h_X^2$  estimates for males compared to only two traits for females (Fig. S12-13 and  
20 Table S15). These findings suggest that the observed disparities in brain traits between males and females  
21 could be partially attributable to genetic regions on the X-chromosome that are uniquely associated with  
22 one sex.  
23

24 To verify this hypothesis, we conducted sex-stratified XWAS for 16,094 males and 17,558 females on the  
25 1,045 brain imaging traits. Due to reduced sample sizes post-split, we used a significance threshold of  
26  $1.0 \times 10^{-8}$  for all analyses in this section, aligning with Bernabeu’s (95) approach in a related study. In  
27 the NPR for males, we identified 25 trait-locus pairs across seven genomic regions, impacting 25 distinct  
28 traits (Fig. 4C and Table S16). Interestingly, 20 out of these traits displayed significant sex differences.  
29 However, the female-specific NPR analysis yielded only five trait-locus pairs across three genomic  
30 regions, affecting five traits (Fig. 4C), with each manifesting pronounced sex disparities. In the PAR for  
31 males, we found a trait-locus pair in Xp22.33 related to FA of the fornix and stria terminalis. However, no  
32 findings emerged from the female-specific analysis.  
33

34 Substantial discrepancies were evident in association patterns between males and females. Xq28 emerged  
35 as the only genomic region where both male and female-specific associations were identified (Fig. 4C).  
36 The only shared traits between sexes in Xq28 were related to the anterior corona radiata. A notable 80%  
37 (20 of the 25) of the male NPR trait-locus pairs were also identified in the sex-agnostic XWAS, compared  
38 to 60% (three out of five) for females (Fig. 4C). This suggests that the significant loci detected in the sex-  
39 agnostic XWAS are primarily driven by male-associated genetic variations. Most traits with significant  
40 loci (regardless of sex) favored full DC. The paucity of significant loci in females aligns with the  
41 observation that, for full DC-favoring traits, more genetic variance manifests in males than in females,  
42 which highlights the necessity for XWAS statistical methodologies to adequately account for  
43 heteroskedasticity between sexes.  
44

45 To maximize the insights from our data, we performed a meta-analysis of the sex-stratified XWAS,  
46 incorporating UKB phase 1-3 and phase 4 subjects of European ancestry, resulting in final sample sizes of  
47 18,025 males and 20,054 females (Table S17). This analysis saw the number of male-specific trait-locus  
48 pairs in NPR increase from 31 to 61 at our chosen significance threshold, while the female dataset gained  
49 an additional six pairs in NPR. In PAR, the male-specific association became insignificant, and no more  
50 pairs were observed for females.



1  
2 Genetic variants can have starkly different effects between sexes, and the extent of these differences can  
3 vary across traits and tissues (95, 96). The variations might illuminate the observed disparities in human  
4 brain structures across sexes (4, 8, 32, 97). We pinpointed three trait-locus pairs across three genomic  
5 regions that exemplify these sex differences (Fig. S14 and Table S18). All the traits displayed significant  
6 sex differences, including CT of left rostral middle frontal, as well as FA and RD of the anterior corona  
7 radiata. All the variants had moderate effect sizes but distinct directions between sexes, and therefore  
8 none of the trait-locus pairs overlapped with sex-specific associations. For example, rs12387759 in  
9 Xq27.3 revealed differences between sexes on CT of the left rostral middle frontal. Similarly, rs62589244  
10 in Xp11.4 had divergent effects on RD of the anterior corona radiata.

11  
12 Differences in genetic effects imply an interaction between genetic variants and sex. Traditional XWAS  
13 which primarily focus on the additive effect, may overlook these variants with varying effect directions in  
14 a linear model, leading to the “masking of genetic effect” problem (95). Through meta-analysis using  
15 Stouffer’s method (98), we identified variants overlooked in the sex-agnostic XWAS (Fig. S14). All the  
16 above trait-locus pairs with varying genetic effects were significant. This highlights the need for XWAS  
17 to account for interactions between variants and sex, reflecting XCI uncertainty (43).

18  
19 Finally, we hypothesized that there might be distinct genetic profiles in the X-chromosome for subjects  
20 that were consistently located at two tails of phenotypic distributions across imaging modalities.  
21 Segregating these subjects by sex, we compared their genetic profiles of the X-chromosome using  
22 Fisher’s exact test (Methods). We identified 29 significant genetic loci for males ( $p\text{-value} < 1.0 \times 10^{-8}$ ),  
23 spanning the entire X-chromosome without clustering in specific regions. Some of these loci were  
24 consistent with findings from our sex-stratified analysis, such as a locus related to CT at Xq28 (Fig. S15  
25 and Table S19). In contrast, no significant results were observed for females. This surprising outcome  
26 suggests that brain phenotypic variations in males can be reflected by diverse X-chromosome genetic  
27 profiles, whereas other factors might drive brain variations in females.

## 28 29 **Discussion**

30 Our study delved into the significant role of the X-chromosome in influencing brain anatomy,  
31 microstructure, and functionality by examining 1,045 complex brain imaging traits in UKB with sample  
32 size 38,529. We assessed three DC models: full DC, no DC, and equal variance in GCTA-GREML (42),  
33 to determine the most appropriate DC status for each trait. This analysis aimed to reflect the DC behaviors  
34 of effective genes during development. Our findings contribute to a detailed atlas of DC and underscore  
35 the enrichment of X-linked heritability across brain imaging traits. We identified 29 novel trait-locus pairs  
36 in the NPR using the wild bootstrap approach for more accurately correcting multiple hypothesis testing.  
37 This research highlights the genetic co-architectures between brain measurements and various brain-  
38 related disorders, particularly schizophrenia. Furthermore, we discovered sex-specific genetic association  
39 patterns and differing genetic effects between sexes, and the NPR SNPs on the X-chromosome accounted  
40 for more phenotypic variations in males.

41  
42 We discovered intriguing interactions between the X-chromosome and autosomes in the human brain.  
43 Specifically, we observed that traits favoring no DC displayed significantly higher X-linked heritability  
44 but reduced autosomal heritability compared to traits with full DC. For no DC traits, the X-chromosome  
45 contributed to 7.1% of the total heritability, contrasting with the 3.8% contribution for full DC traits. We  
46 speculate that no DC traits may be significantly influenced by complex transcriptional, regulatory, and  
47 epigenetic processes during brain development (31, 33). For example, sex steroid receptors often signal  
48 through epigenetic actions (99). Several epigenetic mechanisms, such as the levels of DNA methylation  
49 and acetylation, are sex-specific in the brain (100). Recent studies have demonstrated that sex  
50 chromosomes can also induce sex differences in somatic gene expression in the absence of hormonal  
51 differences (29). Further evidence indicates that some genes escaping XCI produce proteins that regulate

1 chromatin structures, potentially influencing autosomal gene expression levels (29). This includes the  
2 histone demethylases *UTX* and *KDM5C* (101, 102), the histone deacetylase 8 (103-105), and the histone  
3 acetyltransferase complex subunits, such as male-specific lethal 3 (106) and mortality factor 4-like 2  
4 (107). Such *trans*-modifications, which do not alter the nucleotide sequence, might not be reflected in the  
5 narrow-sense heritability, accounting for the reduced heritability ascribed to autosomes. In essence, our  
6 analysis offers insights into potential XCI escape at the trait level in the human brain.

7  
8 The Xq28 genomic region was overly represented in association signals as it contains more than 40% of  
9 the identified protein-coding genes. A third of WM tracts were linked to a compact 40 Kb segment within  
10 Xq28 (152,876,000~152,916,000, GRCh37). The importance of Xq28 is further underscored by its  
11 connection to various intellectual and developmental disabilities. For example, mutations in the *CLIC2*  
12 and *VBPI* genes, located in the int22h-1/int22h-2-mediated duplication area of Xq28, have been  
13 implicated as potential contributors to these disorders (108-110). Additionally, loss-of-function mutations  
14 in the *MECP2* gene are associated with Rett syndrome (111), which mainly affects brain development in  
15 girls. In males, these mutations lead to a range of clinical outcomes, from mild intellectual challenges to  
16 severe neonatal encephalopathy, and in some cases, premature death (112). Considering the substantial  
17 role of Xq28 in influencing brain structure and function, coupled with its connection to a wide spectrum  
18 of brain disorders, future research should focus on characterizing the transcriptomic, proteomic, and  
19 epigenetic profiles for this region to fully understand the underlying biological processes.

20  
21 In addition to sex-agnostic analyses, we systematically explored sex disparities in human brain  
22 measurements, including phenotype, phenotypic variance, X-linked heritability, and genetic associations.  
23 We observed males exhibited greater phenotypic variance and X-linked heritability across most traits, as  
24 well as a higher number of sex-specific genetic associations and better alignment between genetic profile  
25 and phenotypic variation. These findings reflect the biological process where one of the X-chromosomes  
26 in females is randomly silenced in most tissues and cells, potentially contributing to the observed  
27 differences. Furthermore, we discovered that genetic effects of certain variants significantly diverged  
28 between sexes, indicating interactions between sex and variants. Combined with many colocalizations  
29 between brain measurements and sex-hormone related traits, such as testosterone levels and sex hormone  
30 binding globulin (SHBG), we speculate that sex hormones mediated the genetic effect on human brain  
31 development and sexual dimorphism. However, verification of the hypothesis requires more data of  
32 transcriptome, proteome, and metabolome (termed as “multi-omics” (113)), which is currently barren for  
33 the X-chromosome. We earmark this line of inquiry for future research, emphasizing the necessity for both  
34 innovative methodologies and robust multi-omics data dedicated to the X-chromosome.

## 35 36 **References and Notes**

- 37 1. T. Uller, I. Pen, E. Wapstra, L. W. Beukeboom, J. Komdeur, The evolution of sex ratios and sex-  
38 determining systems. *Trends in Ecology & Evolution* **22**, 292-297 (2007).
- 39 2. M. F. Lyon, Gene action in the X-chromosome of the mouse (*Mus musculus* L.). *nature* **190**, 372-  
40 373 (1961).
- 41 3. B. J. Posynick, C. J. Brown, Escape From X-Chromosome Inactivation: An Evolutionary  
42 Perspective. *Front Cell Dev Biol* **7**, 241 (2019).
- 43 4. B. Gegenhuber, J. Tollkuhn, Signatures of sex: Sex differences in gene expression in the  
44 vertebrate brain. *Wiley Interdisciplinary Reviews: Developmental Biology* **9**, e348 (2020).
- 45 5. J. J. Lee *et al.*, Gene discovery and polygenic prediction from a genome-wide association study of  
46 educational attainment in 1.1 million individuals. *Nat Genet* **50**, 1112-1121 (2018).
- 47 6. T. Tukiainen *et al.*, Landscape of X chromosome inactivation across human tissues. *Nature* **550**,  
48 244-248 (2017).
- 49 7. M. Oliva *et al.*, The impact of sex on gene expression across human tissues. *Science* **369**,  
50 eaba3066 (2020).

- 1 8. D. R. Rubinow, P. J. Schmidt, Sex differences and the neurobiology of affective disorders. *Neuropsychopharmacology* **44**, 111-128 (2019).
- 2
- 3 9. S. Ohno, *Sex chromosomes and sex-linked genes*. (Springer Science & Business Media, 2013),
- 4 vol. 1.
- 5 10. X. Deng *et al.*, Evidence for compensatory upregulation of expressed X-linked genes in
- 6 mammals, *Caenorhabditis elegans* and *Drosophila melanogaster*. *Nature genetics* **43**, 1179-1185
- 7 (2011).
- 8 11. J. J. Crowley *et al.*, Analyses of allele-specific gene expression in highly divergent mouse crosses
- 9 identifies pervasive allelic imbalance. *Nature genetics* **47**, 353-360 (2015).
- 10 12. A. Lentini *et al.*, Elastic dosage compensation by X-chromosome upregulation. *Nature*
- 11 *Communications* **13**, 1854 (2022).
- 12 13. C. M. Disteche, High expression of the mammalian X chromosome in brain. *Brain research*
- 13 **1126**, 46-49 (2006).
- 14 14. A. Warling *et al.*, Sex Chromosome Dosage Effects on White Matter Structure in the Human
- 15 Brain. *Cerebral Cortex* **31**, 5339-5353 (2021).
- 16 15. L. M. F. Sng, P. C. Thomson, D. Trabzuni, Genome-wide human brain eQTLs: In-depth analysis
- 17 and insights using the UKBEC dataset. *Sci Rep* **9**, 19201 (2019).
- 18 16. T. T. Mallard *et al.*, X-chromosome influences on neuroanatomical variation in humans. *Nat*
- 19 *Neurosci* **24**, 1216-1224 (2021).
- 20 17. S. M. Smith *et al.*, An expanded set of genome-wide association studies of brain imaging
- 21 phenotypes in UK Biobank. *Nature neuroscience* **24**, 737-745 (2021).
- 22 18. M. Luciano *et al.*, The influence of X chromosome variants on trait neuroticism. *Molecular*
- 23 *psychiatry* **26**, 483-491 (2021).
- 24 19. A. E. West, V. Orlando, Epigenetics in brain function. *Neuroscience* **264**, 1-3 (2014).
- 25 20. M. Fromer *et al.*, Gene expression elucidates functional impact of polygenic risk for
- 26 schizophrenia. *Nature neuroscience* **19**, 1442-1453 (2016).
- 27 21. C. E. Schwartz *et al.*, X-Linked intellectual disability update 2022. *American Journal of Medical*
- 28 *Genetics Part A* **191**, 144-159 (2023).
- 29 22. A. Lin *et al.*, Mapping the stability of human brain asymmetry across five sex-chromosome
- 30 aneuploidies. *Journal of Neuroscience* **35**, 140-145 (2015).
- 31 23. D. S. Hong, A. L. Reiss, Cognitive and neurological aspects of sex chromosome aneuploidies.
- 32 *The Lancet Neurology* **13**, 306-318 (2014).
- 33 24. F. Printzlaw, J. Wolstencroft, D. H. Skuse, Cognitive, behavioral, and neural consequences of sex
- 34 chromosome aneuploidy. *Journal of neuroscience research* **95**, 311-319 (2017).
- 35 25. Y. B. Yurov, S. G. Vorsanova, T. Liehr, A. D. Kolotii, I. Y. Iourov, X chromosome aneuploidy in
- 36 the Alzheimer's disease brain. *Molecular cytogenetics* **7**, 1-7 (2014).
- 37 26. X. C. Sánchez *et al.*, Associations of psychiatric disorders with sex chromosome aneuploidies in
- 38 the Danish iPSYCH2015 dataset: a case-cohort study. *Lancet Psychiatry* **10**, 129-138 (2023).
- 39 27. T. Green, S. Flash, A. L. Reiss, Sex differences in psychiatric disorders: what we can learn from
- 40 sex chromosome aneuploidies. *Neuropsychopharmacology* **44**, 9-21 (2019).
- 41 28. S. Shanmugan *et al.*, Sex differences in the functional topography of association networks in
- 42 youth. *Proc Natl Acad Sci U S A* **119**, e2110416119 (2022).
- 43 29. P. J. Wijchers, R. J. Festenstein, Epigenetic regulation of autosomal gene expression by sex
- 44 chromosomes. *Trends in Genetics* **27**, 132-140 (2011).
- 45 30. A. N. Kaczurkin, A. Raznahan, T. D. Satterthwaite, Sex differences in the developing brain:
- 46 insights from multimodal neuroimaging. *Neuropsychopharmacology* **44**, 71-85 (2019).
- 47 31. J. Marrocco, N. R. Einhorn, B. S. McEwen, Environmental epigenetics of sex differences in the
- 48 brain. *Handbook of Clinical Neurology* **175**, 209-220 (2020).
- 49 32. A. Raznahan, C. M. Disteche, X-chromosome regulation and sex differences in brain anatomy.
- 50 *Neuroscience & Biobehavioral Reviews* **120**, 28-47 (2021).

- 1 33. M. Li *et al.*, Integrative functional genomic analysis of human brain development and  
2 neuropsychiatric risks. *Science* **362**, eaat7615 (2018).
- 3 34. A. L. Wise, L. Gyi, T. A. Manolio, eXclusion: toward integrating the X chromosome in genome-  
4 wide association analyses. *The American Journal of Human Genetics* **92**, 643-647 (2013).
- 5 35. L. Sun, Z. Wang, T. Lu, T. A. Manolio, A. D. Paterson, eXclusionaryY: 10 years later, where are  
6 the sex chromosomes in GWASs? *The American Journal of Human Genetics* **110**, 903-912  
7 (2023).
- 8 36. F. Gao *et al.*, XWAS: a software toolset for genetic data analysis and association studies of the X  
9 chromosome. *Journal of Heredity* **106**, 666-671 (2015).
- 10 37. B. Zhao *et al.*, Common genetic variation influencing human white matter microstructure.  
11 *Science* **372**, (2021).
- 12 38. M. F. Glasser *et al.*, A multi-modal parcellation of human cerebral cortex. *Nature* **536**, 171-178  
13 (2016).
- 14 39. B. Zhao *et al.*, Genome-wide association analysis of 19,629 individuals identifies variants  
15 influencing regional brain volumes and refines their genetic co-architecture with cognitive and  
16 mental health traits. *Nat Genet* **51**, 1637-1644 (2019).
- 17 40. B. Zhao *et al.*, Common variants contribute to intrinsic human brain functional networks. *Nat*  
18 *Genet* **54**, 508-517 (2022).
- 19 41. B. Zhao *et al.*, Genetic influences on the intrinsic and extrinsic functional organizations of the  
20 cerebral cortex. *medRxiv*, 2021.2007.2027.21261187 (2021).
- 21 42. J. Yang, S. H. Lee, M. E. Goddard, P. M. Visscher, GCTA: a tool for genome-wide complex trait  
22 analysis. *Am J Hum Genet* **88**, 76-82 (2011).
- 23 43. B. Chen, R. V. Craiu, L. J. Strug, L. Sun, The X factor: A robust and powerful approach to X-  
24 chromosome-inclusive whole-genome association studies. *Genet Epidemiol* **45**, 694-709 (2021).
- 25 44. J. Sidorenko *et al.*, The effect of X-linked dosage compensation on complex trait variation. *Nat*  
26 *Commun* **10**, 3009 (2019).
- 27 45. K. Silkaitis, B. Lemos, Sex-biased chromatin and regulatory cross-talk between sex  
28 chromosomes, autosomes, and mitochondria. *Biology of Sex Differences* **5**, 2 (2014).
- 29 46. I. Savic, S. Arver, Sex Differences in Cortical Thickness and Their Possible Genetic and Sex  
30 Hormonal Underpinnings. *Cerebral Cortex* **24**, 3246-3257 (2013).
- 31 47. B. Zhao *et al.*, Heritability of Regional Brain Volumes in Large-Scale Neuroimaging and Genetic  
32 Studies. *Cereb Cortex* **29**, 2904-2914 (2019).
- 33 48. E. Hofer *et al.*, Genetic correlations and genome-wide associations of cortical structure in general  
34 population samples of 22,824 adults. *Nature communications* **11**, 4796 (2020).
- 35 49. K. L. Grasby *et al.*, The genetic architecture of the human cerebral cortex. *Science* **367**, (2020).
- 36 50. M. M. Pangelinan *et al.*, Puberty and testosterone shape the corticospinal tract during male  
37 adolescence. *Brain Structure and Function* **221**, 1083-1094 (2016).
- 38 51. T. C. Ho *et al.*, Sex differences in the effects of gonadal hormones on white matter microstructure  
39 development in adolescence. *Developmental Cognitive Neuroscience* **42**, 100773 (2020).
- 40 52. C. C. Chang *et al.*, Second-generation PLINK: rising to the challenge of larger and richer  
41 datasets. *Gigascience* **4**, s13742-13015-10047-13748 (2015).
- 42 53. H. Zhu *et al.*, FRATS: Functional Regression Analysis of DTI Tract Statistics. *IEEE*  
43 *Transactions on Medical Imaging* **29**, 1039-1049 (2010).
- 44 54. E. Sollis *et al.*, The NHGRI-EBI GWAS Catalog: knowledgebase and deposition resource.  
45 *Nucleic Acids Res* **51**, D977-d985 (2023).
- 46 55. S. Naqvi *et al.*, Shared heritability of human face and brain shape. *Nature genetics* **53**, 830-839  
47 (2021).
- 48 56. C. Pantelis *et al.*, Biological insights from 108 schizophrenia-associated genetic loci. *Nature* **511**,  
49 421-427 (2014).
- 50 57. A. F. Pardiñas *et al.*, Common schizophrenia alleles are enriched in mutation-intolerant genes and  
51 in regions under strong background selection. *Nature genetics* **50**, 381-389 (2018).

- 1 58. V. Trubetsky *et al.*, Mapping genomic loci implicates genes and synaptic biology in  
2 schizophrenia. *Nature* **604**, 502-508 (2022).
- 3 59. M. Lam *et al.*, Comparative genetic architectures of schizophrenia in East Asian and European  
4 populations. *Nature genetics* **51**, 1670-1678 (2019).
- 5 60. A. Okbay *et al.*, Polygenic prediction of educational attainment within and between families from  
6 genome-wide association analyses in 3 million individuals. *Nature genetics* **54**, 437-449 (2022).
- 7 61. S. Periyasamy *et al.*, Association of schizophrenia risk with disordered niacin metabolism in an  
8 Indian genome-wide association study. *JAMA psychiatry* **76**, 1026-1034 (2019).
- 9 62. X. Yao *et al.*, Integrative analysis of genome-wide association studies identifies novel loci  
10 associated with neuropsychiatric disorders. *Translational psychiatry* **11**, 69 (2021).
- 11 63. Y. Al-Sarraj *et al.*, Family-based genome-wide association study of autism spectrum disorder in  
12 middle eastern families. *Genes* **12**, 761 (2021).
- 13 64. Y. Le Guen *et al.*, Common X-chromosome variants are associated with Parkinson disease risk.  
14 *Annals of neurology* **90**, 22-34 (2021).
- 15 65. H. G. Bernstein, G. Keilhoff, J. Steiner, The implications of hypothalamic abnormalities for  
16 schizophrenia. *Handb Clin Neurol* **182**, 107-120 (2021).
- 17 66. S. Hodgins, M. J. Piatosa, B. Schiffer, Violence among people with schizophrenia: phenotypes  
18 and neurobiology. *Neuroscience of aggression*, 329-368 (2014).
- 19 67. M. D. Sacchet, E. E. Livermore, J. E. Iglesias, G. H. Glover, I. H. Gotlib, Subcortical volumes  
20 differentiate major depressive disorder, bipolar disorder, and remitted major depressive disorder.  
21 *Journal of psychiatric research* **68**, 91-98 (2015).
- 22 68. N. Loskutova, R. A. Honea, W. M. Brooks, J. M. Burns, Reduced limbic and hypothalamic  
23 volumes correlate with bone density in early Alzheimer's disease. *Journal of Alzheimer's Disease*  
24 **20**, 313-322 (2010).
- 25 69. K. S. King *et al.*, Effect of Leukocyte Telomere Length on Total and Regional Brain Volumes in  
26 a Large Population-Based Cohort. *JAMA Neurology* **71**, 1247-1254 (2014).
- 27 70. M.-L. Ancelin *et al.*, Lifetime major depression and grey-matter volume. *Journal of psychiatry*  
28 *and neuroscience* **44**, 45-53 (2019).
- 29 71. P. Videbech, B. Ravnkilde, Hippocampal volume and depression: a meta-analysis of MRI studies.  
30 *American Journal of Psychiatry* **161**, 1957-1966 (2004).
- 31 72. M. Stratmann *et al.*, Insular and hippocampal gray matter volume reductions in patients with  
32 major depressive disorder. *PloS one* **9**, e102692 (2014).
- 33 73. M. I. Geerlings, L. Gerritsen, Late-life depression, hippocampal volumes, and hypothalamic-  
34 pituitary-adrenal axis regulation: a systematic review and meta-analysis. *Biological psychiatry* **82**,  
35 339-350 (2017).
- 36 74. D. P. Breen *et al.*, Hypothalamic volume loss is associated with reduced melatonin output in  
37 Parkinson's disease. *Mov Disord* **31**, 1062-1066 (2016).
- 38 75. W. O. Arruda *et al.*, Volumetric MRI Changes in Spinocerebellar Ataxia (SCA3 and SCA10)  
39 Patients. *The Cerebellum* **19**, 536-543 (2020).
- 40 76. M. S. Tedja *et al.*, Genome-wide association meta-analysis highlights light-induced signaling as a  
41 driver for refractive error. *Nature Genetics* **50**, 834-848 (2018).
- 42 77. P. G. Hysi *et al.*, Meta-analysis of 542,934 subjects of European ancestry identifies new genes  
43 and mechanisms predisposing to refractive error and myopia. *Nature Genetics* **52**, 401-407  
44 (2020).
- 45 78. K. S. Ruth *et al.*, Using human genetics to understand the disease impacts of testosterone in men  
46 and women. *Nature medicine* **26**, 252-258 (2020).
- 47 79. S. Harrison, N. M. Davies, L. D. Howe, A. Hughes, Testosterone and socioeconomic position:  
48 Mendelian randomization in 306,248 men and women in UK Biobank. *Science Advances* **7**,  
49 eabf8257 (2021).
- 50 80. B. F. Voight *et al.*, Twelve type 2 diabetes susceptibility loci identified through large-scale  
51 association analysis. *Nature Genetics* **42**, 579-589 (2010).

- 1 81. H. Li *et al.*, A Genome-Wide Association Study Identifies GRK5 and RASGRP1 as Type 2  
2 Diabetes Loci in Chinese Hans. *Diabetes* **62**, 291-298 (2012).
- 3 82. K. Hara *et al.*, Genome-wide association study identifies three novel loci for type 2 diabetes.  
4 *Human Molecular Genetics* **23**, 239-246 (2013).
- 5 83. K. Ishigaki *et al.*, Large-scale genome-wide association study in a Japanese population identifies  
6 novel susceptibility loci across different diseases. *Nature Genetics* **52**, 669-679 (2020).
- 7 84. K. Suzuki *et al.*, Identification of 28 new susceptibility loci for type 2 diabetes in the Japanese  
8 population. *Nature Genetics* **51**, 379-386 (2019).
- 9 85. D. Vuckovic *et al.*, The Polygenic and Monogenic Basis of Blood Traits and Diseases. *Cell* **182**,  
10 1214-1231.e1211 (2020).
- 11 86. S. Sakaue *et al.*, A cross-population atlas of genetic associations for 220 human phenotypes. *Nat*  
12 *Genet* **53**, 1415-1424 (2021).
- 13 87. M. Sabater-Lleal *et al.*, Genome-Wide Association Transethnic Meta-Analyses Identifies Novel  
14 Associations Regulating Coagulation Factor VIII and von Willebrand Factor Plasma Levels.  
15 *Circulation* **139**, 620-635 (2019).
- 16 88. S. Lindström *et al.*, Genomic and transcriptomic association studies identify 16 novel  
17 susceptibility loci for venous thromboembolism. *Blood* **134**, 1645-1657 (2019).
- 18 89. G. Consortium *et al.*, The Genotype-Tissue Expression (GTEx) pilot analysis: multitissue gene  
19 regulation in humans. *Science* **348**, 648-660 (2015).
- 20 90. Z. Zhu *et al.*, Integration of summary data from GWAS and eQTL studies predicts complex trait  
21 gene targets. *Nature genetics* **48**, 481-487 (2016).
- 22 91. P. B. Celestino-Soper *et al.*, A common X-linked inborn error of carnitine biosynthesis may be a  
23 risk factor for nondysmorphic autism. *Proceedings of the National Academy of Sciences* **109**,  
24 7974-7981 (2012).
- 25 92. A. L. Beaudet, Brain carnitine deficiency causes nonsyndromic autism with an extreme male bias:  
26 A hypothesis. *Bioessays* **39**, 1700012 (2017).
- 27 93. J. L. Steele *et al.*, Semaphorin-plexin signaling: From axonal guidance to a new X-linked  
28 intellectual disability syndrome. *Pediatric Neurology* **126**, 65-73 (2022).
- 29 94. B. T. Sherman *et al.*, DAVID: a web server for functional enrichment analysis and functional  
30 annotation of gene lists (2021 update). *Nucleic Acids Res* **50**, W216-w221 (2022).
- 31 95. E. Bernabeu *et al.*, Sex differences in genetic architecture in the UK Biobank. *Nature genetics* **53**,  
32 1283-1289 (2021).
- 33 96. E. A. Khramtsova, L. K. Davis, B. E. Stranger, The role of sex in the genomics of human  
34 complex traits. *Nature Reviews Genetics* **20**, 173-190 (2019).
- 35 97. S. J. Ritchie *et al.*, Sex Differences in the Adult Human Brain: Evidence from 5216 UK Biobank  
36 Participants. *Cereb Cortex* **28**, 2959-2975 (2018).
- 37 98. S. A. Stouffer, E. A. Suchman, L. C. DeVinney, S. A. Star, R. M. Williams Jr, The american  
38 soldier: Adjustment during army life.(studies in social psychology in world war ii), vol. 1.  
39 (1949).
- 40 99. M. J. Tetel, Nuclear receptor coactivators: essential players for steroid hormone action in the  
41 brain and in behaviour. *Journal of neuroendocrinology* **21**, 229-237 (2009).
- 42 100. B. Labonté *et al.*, Sex-specific transcriptional signatures in human depression. *Nature medicine*  
43 **23**, 1102-1111 (2017).
- 44 101. J. Christensen *et al.*, RBP2 belongs to a family of demethylases, specific for tri-and dimethylated  
45 lysine 4 on histone 3. *Cell* **128**, 1063-1076 (2007).
- 46 102. S. Iwase *et al.*, The X-linked mental retardation gene SMCX/JARID1C defines a family of  
47 histone H3 lysine 4 demethylases. *Cell* **128**, 1077-1088 (2007).
- 48 103. J. J. Buggy *et al.*, Cloning and characterization of a novel human histone deacetylase, HDAC8.  
49 *Biochemical Journal* **350**, 199-205 (2000).
- 50 104. E. Hu *et al.*, Cloning and characterization of a novel human class I histone deacetylase that  
51 functions as a transcription repressor. *Journal of Biological Chemistry* **275**, 15254-15264 (2000).

- 1 105. I. Van den Wyngaert *et al.*, Cloning and characterization of human histone deacetylase 8. *FEBS*  
2 *letters* **478**, 77-83 (2000).
- 3 106. E. R. Smith *et al.*, A human protein complex homologous to the Drosophila MSL complex is  
4 responsible for the majority of histone H4 acetylation at lysine 16. *Molecular and cellular*  
5 *biology* **25**, 9175-9188 (2005).
- 6 107. Y. Cai *et al.*, Identification of new subunits of the multiprotein mammalian TRRAP/TIP60-  
7 containing histone acetyltransferase complex. *Journal of Biological Chemistry* **278**, 42733-42736  
8 (2003).
- 9 108. E. F. Andersen, E. E. Baldwin, S. Ellingwood, R. Smith, A. N. Lamb, Xq28 duplication  
10 overlapping the int22h-1/int22h-2 region and including RAB39B and CLIC2 in a family with  
11 intellectual and developmental disability. *American Journal of Medical Genetics Part A* **164**,  
12 1795-1801 (2014).
- 13 109. A. W. El-Hattab *et al.*, Clinical characterization of int22h1/int22h2-mediated Xq28  
14 duplication/deletion: new cases and literature review. *BMC medical genetics* **16**, 1-12 (2015).
- 15 110. R. A. Ballout *et al.*, Int22h1/Int22h2-mediated Xq28 duplication syndrome: de novo duplications,  
16 prenatal diagnoses, and additional phenotypic features. *Human mutation* **41**, 1238-1249 (2020).
- 17 111. H. Van Esch, in *GeneReviews*(®), M. P. Adam *et al.*, Eds. (University of Washington, Seattle  
18 Copyright © 1993-2023, University of Washington, Seattle. GeneReviews is a registered trademark of the  
19 University of Washington, Seattle. All rights reserved., Seattle (WA), 1993).
- 20 112. A. Pascual-Alonso, A. F. Martínez-Monseny, C. Xiol, J. Armstrong, MECP2-Related Disorders  
21 in Males. *Int J Mol Sci* **22**, (2021).
- 22 113. Y. Xu *et al.*, An atlas of genetic scores to predict multi-omic traits. *Nature* **616**, 123-131 (2023).
- 23 114. Z. Jiang, Sullivan, Patrick, Li, Tengfei, Zhao, Bingxin, Wang, Xifeng, Huang, Shuai, Guan, Peter,  
24 Chen, Jie, Yang, Yue, Stein, Jason, Li, Yun, Liu, Dajiang, Sun, Lei, & Zhu, Hongtu., Summary  
25 statistics of the sex chromosomes for 2,822 brain imaging traits. . (2023).
- 26 115. A. Klein, J. Tourville, 101 labeled brain images and a consistent human cortical labeling protocol.  
27 *Frontiers in neuroscience* **6**, 171 (2012).
- 28 116. R. S. Desikan *et al.*, An automated labeling system for subdividing the human cerebral cortex on  
29 MRI scans into gyral based regions of interest. *Neuroimage* **31**, 968-980 (2006).
- 30 117. N. Jahanshad *et al.*, Multi-site genetic analysis of diffusion images and voxelwise heritability  
31 analysis: A pilot project of the ENIGMA-DTI working group. *Neuroimage* **81**, 455-469 (2013).
- 32 118. P. Kochunov *et al.*, Multi-site study of additive genetic effects on fractional anisotropy of  
33 cerebral white matter: comparing meta and megaanalytical approaches for data pooling.  
34 *Neuroimage* **95**, 136-150 (2014).
- 35 119. J. L. Ji *et al.*, Mapping the human brain's cortical-subcortical functional network organization.  
36 *Neuroimage* **185**, 35-57 (2019).
- 37 120. F. Alfaro-Almagro *et al.*, Confound modelling in UK Biobank brain imaging. *NeuroImage* **224**,  
38 117002 (2021).
- 39 121. K. Wang, M. Li, H. Hakonarson, ANNOVAR: functional annotation of genetic variants from  
40 high-throughput sequencing data. *Nucleic acids research* **38**, e164-e164 (2010).
- 41 122. A. D. Schmitt *et al.*, A compendium of chromatin contact maps reveals spatially active regions in  
42 the human genome. *Cell reports* **17**, 2042-2059 (2016).
- 43 123. N. Y. Sey *et al.*, A computational tool (H-MAGMA) for improved prediction of brain-disorder  
44 risk genes by incorporating brain chromatin interaction profiles. *Nature Neuroscience* **23**, 583-  
45 593 (2020).
- 46 124. N. Y. Sey, B. M. Pratt, H. Won, Annotating genetic variants to target genes using H-MAGMA.  
47 *Nature Protocols* **18**, 22-35 (2023).
- 48 125. F. Alfaro-Almagro *et al.*, Image processing and Quality Control for the first 10,000 brain imaging  
49 datasets from UK Biobank. *Neuroimage* **166**, 400-424 (2018).
- 50 126. C. A. de Leeuw, J. M. Mooij, T. Heskes, D. Posthuma, MAGMA: generalized gene-set analysis  
51 of GWAS data. *PLoS Comput Biol* **11**, e1004219 (2015).

- 1 127. Z. Sha, D. Schijven, S. E. Fisher, C. Francks, Genetic architecture of the white matter  
2 connectome of the human brain. *Science Advances* **9**, eadd2870 (2023).
- 3 128. E. H. Wong *et al.*, Common variants on Xq28 conferring risk of schizophrenia in Han Chinese.  
4 *Schizophrenia bulletin* **40**, 777-786 (2014).
- 5 129. W. Yu, M. Wang, Y. Zhang, Construction of lncRNA-ceRNA Networks to Reveal the Potential  
6 Role of Lfng/Notch1 Signaling Pathway in Alzheimer's Disease. *Current Alzheimer Research*,  
7 (2022).
- 8 130. A. Haghghatfard *et al.*, The first genome-wide association study of internet addiction; Revealed  
9 substantial shared risk factors with neurodevelopmental psychiatric disorders. *Research in*  
10 *Developmental Disabilities* **133**, 104393 (2023).
- 11 131. J. Bralten *et al.*, Autism spectrum disorders and autistic traits share genetics and biology.  
12 *Molecular Psychiatry* **23**, 1205-1212 (2018).
- 13 132. M. Luciano *et al.*, Association analysis in over 329,000 individuals identifies 116 independent  
14 variants influencing neuroticism. *Nat Genet* **50**, 6-11 (2018).
- 15 133. J. Homann *et al.*, Genome-Wide Association Study of Alzheimer's Disease Brain Imaging  
16 Biomarkers and Neuropsychological Phenotypes in the European Medical Information  
17 Framework for Alzheimer's Disease Multimodal Biomarker Discovery Dataset. *Frontiers in*  
18 *Ageing Neuroscience* **14**, (2022).
- 19 134. T. D. Wade *et al.*, Genetic variants associated with disordered eating. *International Journal of*  
20 *Eating Disorders* **46**, 594-608 (2013).
- 21 135. J. M. Engreitz *et al.*, The Xist lncRNA Exploits Three-Dimensional Genome Architecture to  
22 Spread Across the X Chromosome. *Science* **341**, 1237973 (2013).
- 23 136. S. Gayen, E. Maclary, E. Buttigieg, M. Hinten, S. Kalantry, A Primary Role for the Tsix lncRNA  
24 in Maintaining Random X-Chromosome Inactivation. *Cell Reports* **11**, 1251-1265 (2015).
- 25 137. R. C. Gur, R. E. Gur, Complementarity of sex differences in brain and behavior: From laterality  
26 to multimodal neuroimaging. *Journal of neuroscience research* **95**, 189-199 (2017).
- 27 138. R. C. Gur *et al.*, Sex differences in brain gray and white matter in healthy young adults:  
28 correlations with cognitive performance. *Journal of Neuroscience* **19**, 4065-4072 (1999).
- 29 139. G. Gong *et al.*, Age-and gender-related differences in the cortical anatomical network. *Journal of*  
30 *Neuroscience* **29**, 15684-15693 (2009).
- 31 140. T. D. Satterthwaite *et al.*, Linked sex differences in cognition and functional connectivity in  
32 youth. *Cerebral cortex* **25**, 2383-2394 (2015).
- 33 141. E. A. Allen *et al.*, A baseline for the multivariate comparison of resting-state networks. *Frontiers*  
34 *in systems neuroscience* **5**, 2 (2011).
- 35 142. J. Marrocco, B. S. McEwen, Sex in the brain: hormones and sex differences. *Dialogues in clinical*  
36 *neuroscience*, (2022).
- 37



## 1 **Acknowledgements**

2 We thank the participants in the UKB study for their contribution and the research teams for their work in  
3 collecting, processing, and disseminating these datasets for analysis. We thank University of North  
4 Carolina at Chapel Hill, and the Research Computing groups for providing computational resources and  
5 support that have contributed to the research results.  
6

## 7 **Funding:**

8 National Institute on Aging of the National Institutes of Health grant RF1AG082938 (HZ and BZ),  
9 National Institutes of Health grant MH116527 (TFL and HZ), and National Institute of Child Health and  
10 Human Development grant P50HD103573 (YL).  
11

## 12 **Author contributions:**

13 Conceptualization: ZJ, BZ, HZ, LS

14 Methodology: ZJ

15 Preprocessing: TFL, XW, TYL, YY, HS, PYG, JC

16 Investigation: ZJ

17 Visualization: ZJ

18 Funding acquisition: HZ, BZ, TFL, YL

19 Project administration: HZ

20 Supervision: BZ, LS, HZ

21 Writing – original draft: ZJ

22 Writing – review & editing: ZJ, PFS, YL, JLS, DL, LS, HZ, TFL  
23

24 **Competing interests:** The authors declare no competing interests.  
25

26 **Data and materials availability:** This research was conducted using the UKB resource (application  
27 number 22783), subject to a data transfer agreement. The UKB has obtained ethics approval from the  
28 Northwest Multi-Centre Research Ethics Committee (MREC, approval number: 11/NW/0382), and  
29 obtained written informed consent from all participants prior to the study. The eQTL summary statistics  
30 from the CAGE whole-blood study can be downloaded at <https://cnsgenomics.com/content/data>. All files  
31 to generate annotation used in H-MAGMA can be accessed at <https://doi.org/10.5281/zenodo.5503876>.  
32 The summary statistics (*II4*) generated by association analyses in the current study can be accessed at  
33 <https://bigkp.org/> and Zenodo (<https://zenodo.org/record/8317844>). All software and packages used in  
34 this study are publicly available: PLINK2 ([www.cog-genomics.org/plink/2.0/](http://www.cog-genomics.org/plink/2.0/)), METAL  
35 (<https://genome.sph.umich.edu/wiki/METAL>), GCTA  
36 (<https://yanglab.westlake.edu.cn/software/gcta/#Overview>), DAVID Bioinformatics DataBase  
37 (<https://david.ncifcrf.gov/home.jsp>), SynGO (<https://syngoportal.org/>), FUMA (<https://fuma.ctglab.nl>).  
38

## 39 **Supplementary Materials**

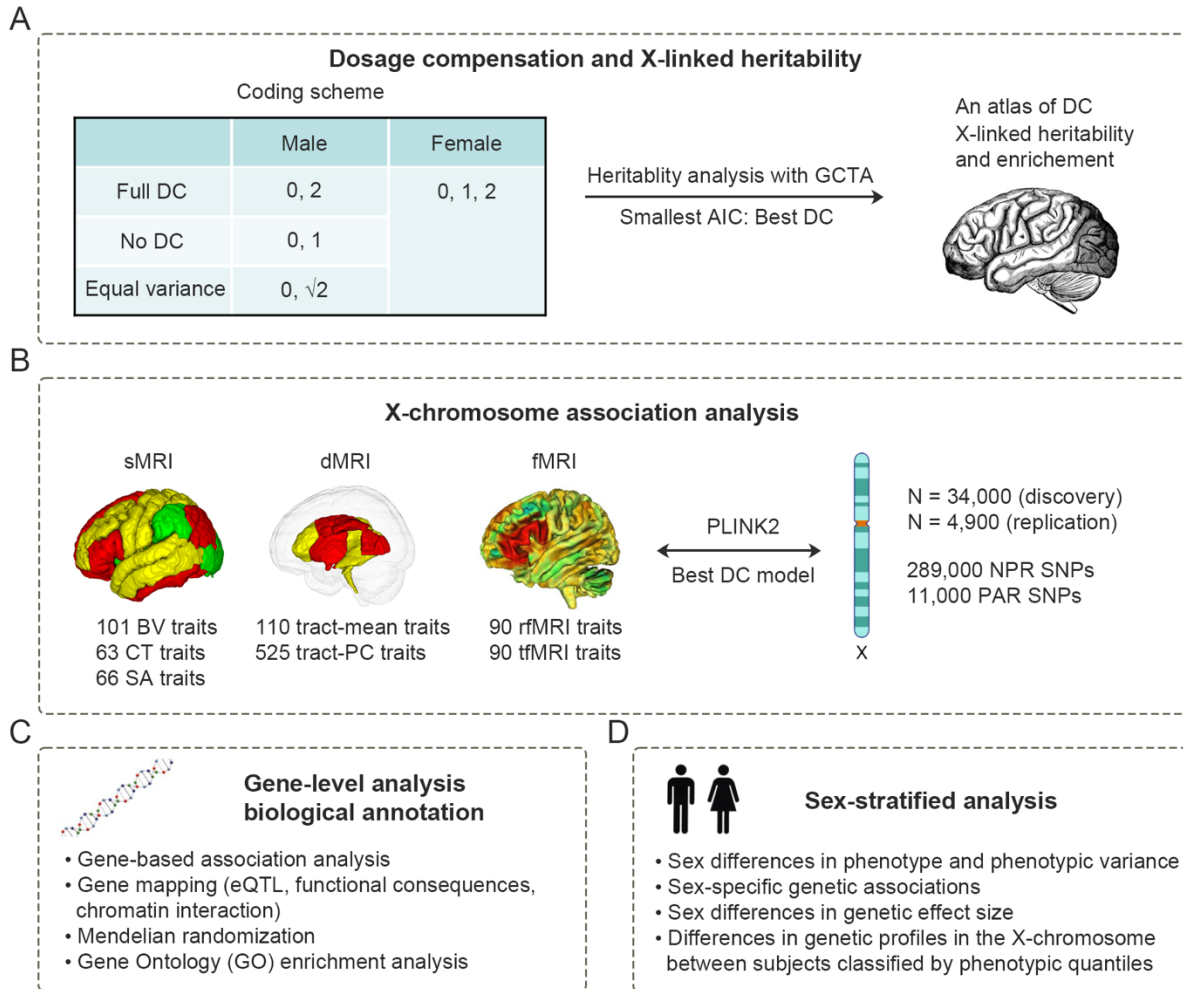
40 Materials and Methods

41 Supplementary Text

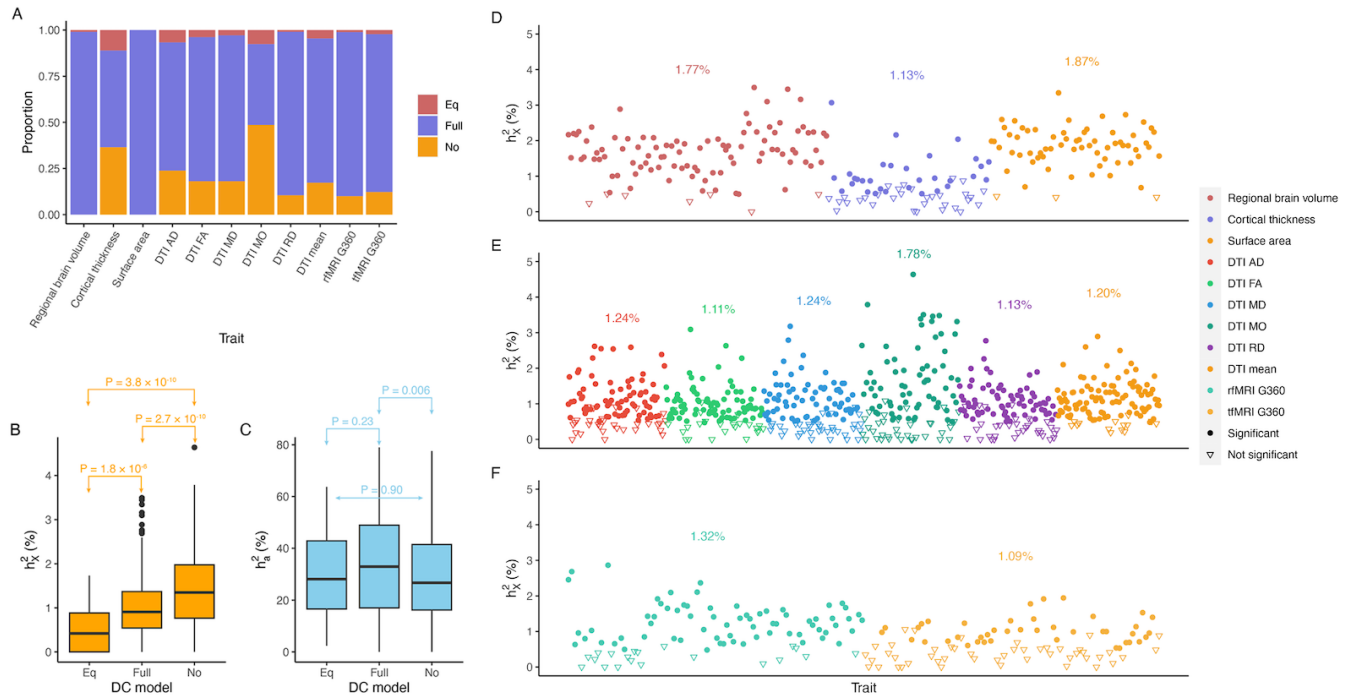
42 Figs. S1 to S21

43 Tables S1 to S23

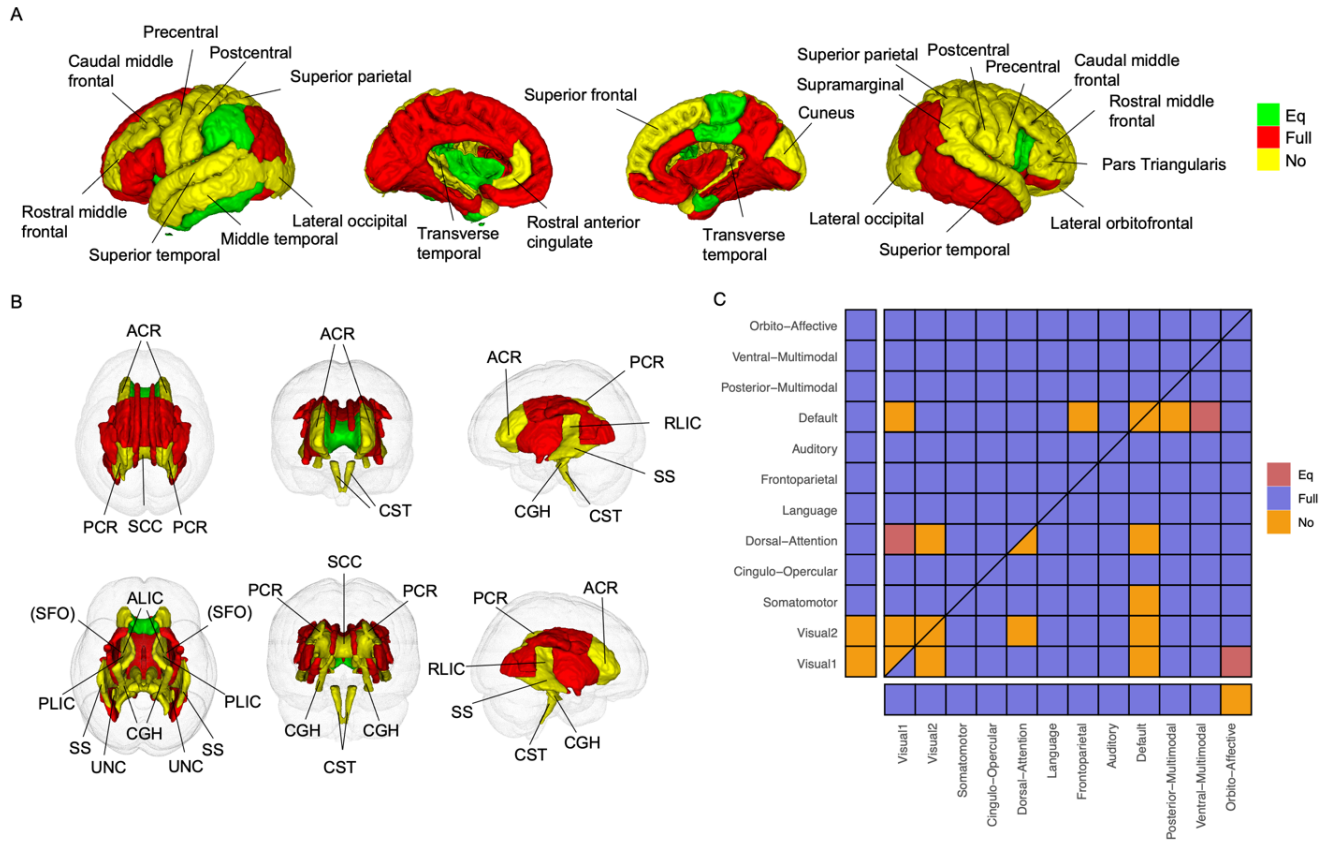
44 References (115-142)



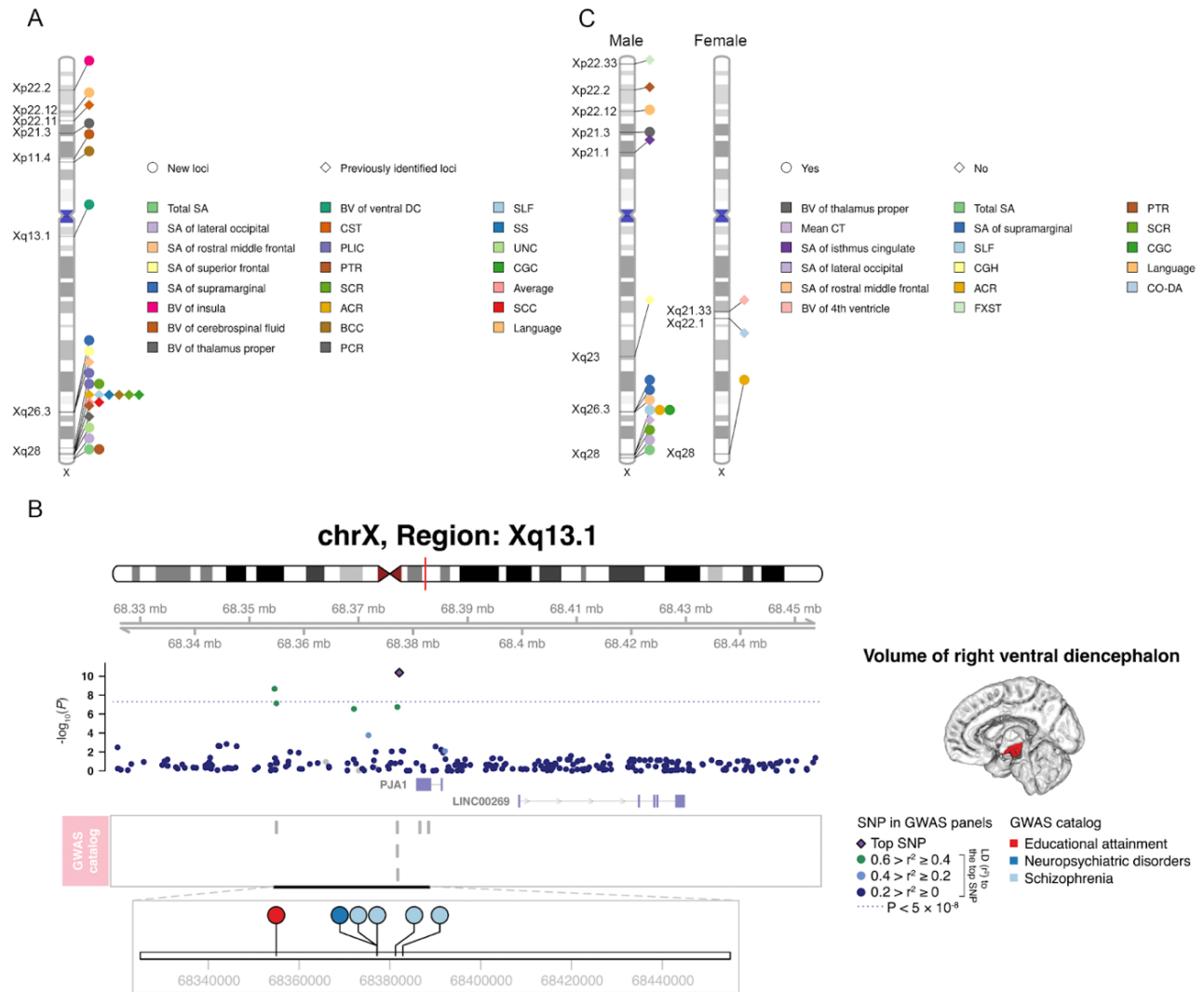
1  
2 **Figure 1: Overview of the study design.** This study encompasses four main components. A) We first  
3 determined the DC for each trait by evaluating three possible DC models, represented as three different  
4 coding schemes. We then established a comprehensive atlas of DC for each trait category. In the  
5 meanwhile, we estimated the X-linked heritability and assessed the enrichment. B) Using the optimal DC  
6 models, we conducted X-chromosome association analysis across 1,045 complex brain imaging traits for  
7 brain anatomy, microstructures, and functionality. C) Through gene-level analysis and biological  
8 annotation, we identified associated genes and discovered gene ontology terms with enrichment. We  
9 further bridged the association signals with brain-related disorders and other health conditions through  
10 gene functional mapping. D) In sex-stratified analysis, we delved into the sex disparities in many aspects,  
11 including phenotype, phenotypic variance, X-linked heritability, sex-specific genetic associations, as well  
12 as genetic profiles in the X-chromosome between subjects classified by phenotypic quantiles.



1  
2 **Figure 2: DC and heritability patterns across trait categories.** A) Distribution of the three DC groups  
3 across trait categories. B)-C) Comparisons of X-linked heritability ( $h_X^2$ ) and autosomal heritability ( $h_a^2$ )  
4 estimates among DC groups, respectively. Unadjusted p-values of the Wilcoxon rank sum test for  
5 pairwise comparisons are annotated. D)-E) Scatter plots of  $h_X^2$  estimates for individual traits in sMRI,  
6 DTI, and fMRI, respectively. Different trait categories are color-coded. Traits with significant  $h_X^2$   
7 estimates are represented as filled circles, while traits with insignificant  $h_X^2$  estimates are represented as  
8 inverted triangles. The average  $h_X^2$  estimate for significant traits is highlighted in its respective color.



1  
 2 **Figure 3: Atlases of DC for CT, MO (tract-mean), and fMRI traits.** A) DC atlas for CT: the left two  
 3 showcase the left hemisphere while the right two display the right hemisphere. Regions of Interest (ROIs)  
 4 favoring no DC are annotated. B) DC atlas for tract-mean traits assessed by MO shown in six  
 5 perspectives. The sequence from left to right, top to bottom includes superior, anterior, left, interior,  
 6 posterior, and right views. Tracts favoring no DC are annotated. “SFO” is in parenthesis since it is  
 7 blocked by other tracts. C) DC atlas for fMRI traits: The upper triangle illustrates rfMRI, whereas the  
 8 lower triangle depicts tfMRI. The diagonal, extending from the bottom left to the top right, divides into  
 9 two sections—the upper triangle portrays DC for rfMRI intra-network connectivity and the lower for  
 10 tfMRI. Cells on the left margin represent amplitude traits for rfMRI, while those at the bottom indicate  
 11 amplitude traits for tfMRI.



1  
2 **Figure 4: Main results in X-chromosome association analysis.** A) Genomic loci associated with  
3 complex brain imaging traits identified in sex-agnostic association analysis. Ideogram illustrating the  
4 genomic regions affecting brain imaging traits. Each trait is represented by a unique color, with the  
5 corresponding genomic region annotated directly on the ideogram. The signal point for white matter tracts  
6 indicates that at least one of the 25 related traits (20 PC traits and five mean traits) is associated with the  
7 genomic region. Novel identifications are represented in circles, while replicating for previous discoveries  
8 are represented in diamonds. B) A selected genetic locus with important colocalizations with brain-related  
9 phenotypes. The top SNP, defined as the SNP with the lowest p-value in the locus, surpasses the  
10  $5 \times 10^{-8}$  threshold after adjusting for multiple comparisons using the wild bootstrap approach. However,  
11 the p-values shown in the figure remain unadjusted. The top SNP along with all the SNPs in LD ( $r^2 >$   
12  $0.6$ ) in the same locus are the targets for XWAS results lookup in the NHGRI-EBI GWAS catalog (up to  
13 June 2023). The volume of the right ventral diencephalon exhibits shared genetic links with educational  
14 attainment and schizophrenia, pinpointed at an Xq13.1 locus by rs2361468. C) Genomic loci associated  
15 with complex brain imaging traits identified in sex-stratified association analysis. The label “Language”  
16 denotes the mean amplitude trait of the language network in rfMRI. “CO-DA” stands for the mean  
17 connectivity trait between the cingulo-opercular and dorsal-attention networks in rfMRI. Trait-locus pairs  
18 that are overlapped with those identified in the sex-agnostic analysis are represented as circles, while  
19 those specific to sex-stratified analysis are represented as diamonds.

1 **Table 1: Novel trait-locus pairs on the X-chromosome for complex brain imaging traits in sex-agnostic analysis.** The identified trait-locus  
2 pairs are compared to results on the NHGRI-EBI GWAS catalog data (up to June 2023). A pair is considered novel if either the trait is novel at the  
3 locus, or the locus is novel for the trait. The full names of white matter tracts are present in Table S1. The raw p-values are adjusted by using the  
4 wild bootstrap approach. The physical locations of loci are determined based on GRCh37.

Trait	UniqID	RsID	p-Value	p-Value (adj)	Start	End	Region
Total SA (left)	23:154740180:A:G	rs76536573	3.09E-13	1.86E-12	153732991	154949953	q28
Total SA (right)	23:154678628:C:G	rs28880039	1.13E-11	2.73E-10	153732991	154949953	q28
SA of lateral occipital (left)	23:154440161:C:T	rs11156600	2.14E-12	2.74E-11	154018581	154949953	q28
SA of superior frontal (left)	23:136567864:C:T	rs5931154	1.50E-10	9.12E-09	136500146	137073809	q26.3
SA of supramarginal (left)	23:136505579:C:T	rs2743914	8.02E-15	1.10E-14	136471150	137073809	q26.3
SA of supramarginal (right)	23:136500146:A:G	rs2840674	4.65E-12	8.01E-11	136450688	136841801	q26.3
BV of insula (left)	23:11381616:A:G	rs5935037	2.83E-10	1.94E-08	11381616	11594043	p22.2
BV of insula (right)	23:11381616:A:G	rs5935037	1.28E-10	6.65E-09	11381616	11594043	p22.2
BV of cerebrospinal fluid	23:38009121:A:G	rs35318931	6.71E-12	9.84E-11	37933437	38017972	p11.4
BV of thalamus proper (left)	23:28140326:A:G	rs2131673	4.69E-14	1.32E-13	28033828	28284470	p21.3
BV of thalamus proper (right)	23:28140326:A:G	rs2131673	1.99E-13	1.01E-12	28033828	28284470	p21.3
BV of ventral DC (right)	23:68377485:A:G	rs2361468	4.22E-11	8.43E-09	68354618	68384580	q13.1
PCR (AD PC1)	23:152589891:A:G	rs5970440	4.17E-10	3.60E-08	152576561	152656246	q28
PLIC (AD PC1)	23:152590165:C:G	rs5970442	3.20E-10	2.53E-08	152576561	152656246	q28
PTR (AD PC3)	23:154740180:A:G	rs76536573	5.57E-13	6.00E-12	154379088	154972517	q28
SCR (AD PC1)	23:152590165:C:G	rs5970442	1.41E-12	1.53E-11	152576561	152656246	q28
BCC (FA PC3)	23:39418196:C:T	rs57718759	1.23E-10	7.02E-09	39383773	39494923	p11.4
UNC (FA PC1)	23:152908152:A:G	rs2301142	1.77E-13	8.88E-12	152877997	152908887	q28
BCC (RD PC2)	23:39464147:C:T	rs7888246	4.66E-12	8.02E-11	39383773	39494923	p11.4
PCR (MO PC1)	23:152589891:A:G	rs5970440	9.85E-10	9.08E-09	152576561	152656246	q28
PLIC (MO PC4)	23:150542930:G:T	rs201850695	1.10E-13	4.22E-12	150497978	150614462	q28
PLIC (MO PC5)	23:150514840:C:T	rs5924909	2.75E-10	1.25E-09	150514840	150614316	q28
SCR (MO PC1)	23:152638744:G:T	rs67596711	1.25E-11	3.12E-10	152576561	152656246	q28
BCC (FA mean)	23:152906292:A:T	rs3761536	1.16E-10	2.91E-08	152886255	152908887	q28
PTR (FA mean)	23:152898261:A:G	rs4328011	3.27E-10	2.60E-08	152894551	152907479	q28
UNC (FA mean)	23:152908152:A:G	rs2301142	1.22E-12	1.01E-10	152877997	152908887	q28
SCR (AD mean)	23:152590019:C:T	rs5970441	1.10E-10	6.02E-09	152576561	152648336	q28
SCR (MO mean)	23:152638744:G:T	rs67596711	2.12E-11	6.41E-10	152576561	152656246	q28
Amplitude of the language network (rfMRI)	23:19937727:A:C	rs7880364	1.54E-10	4.12E-08	19572473	20322238	p22.12

5