

1 **Do we need to reconsider knee valgus as a sole risk factor for second**
2 **ACL injury?**

3 **Exploratory analysis of individual Landing Error Scoring System (LESS) items**
4 **with three year follow-up**

5
6 Nicky van Melick, PhD¹

7 Lisa van Rijn, PT, MSc²

8 Rob Bogie, MD, PhD^{1,3}

9 Thomas J. Hoogeboom, PhD⁴

10

11 ¹ Sports & Orthopedics Research Center, Anna Hospital, Bogardeind 2, 5664 EH Geldrop, the
12 Netherlands

13 ² Kniecentrum Plus, Jos Klijnenlaan 685B, 6164 AP Geleen, the Netherlands

14 ³ Department of orthopedic surgery, Anna Hospital, Bogardeind 2, 5664 EH Geldrop, the
15 Netherlands

16 ⁴ Radboud university medical center, Research Institute for Health Sciences, IQ healthcare,
17 Kapittelweg 54, 6525 EP Nijmegen, the Netherlands

18

19 **Corresponding author:**

20 Nicky van Melick, PhD

21 Sports & Orthopedics Research Center

22 Anna Hospital

23 Bogardeind 2

24 5664 EH Geldrop, the Netherlands

25 E-mail: n.van.melick@st-anna.nl

26 Phone: 0031 402864273

27 **Abstract**

28 **Background:** It remains unclear which movement quality items are associated with second
29 anterior cruciate ligament (ACL) injuries after ACL reconstruction.

30 **Hypotheses:** 1) Movement quality measured with the Landing Error Scoring System (LESS) is
31 not associated with second ACL injury in soccer players who returned to sports after ACL
32 reconstruction. 2) In an exploratory analysis, soccer players with and without second ACL
33 injuries display differences in individual LESS items.

34 **Methods:** Fourteen male recreational ACL-reconstructed soccer players had non-fatigued and
35 fatigued movement quality measurement with LESS score three years ago and were now
36 interviewed by phone about soccer participation and second ACL injuries.

37 **Results:** Two soccer players did not return to soccer and were therefore excluded from
38 analysis. Six of twelve (50%) included soccer players had a second ACL injury. There was no
39 association between the non-fatigued ($p=1.000$) and fatigued ($p=0.455$) LESS score and
40 second ACL injuries. However, when exploring individual LESS items, we found 50% of the
41 soccer players with second ACL injury landing with little trunk and knee flexion displacement in
42 combination with knee valgus, while none of the soccer players without second ACL injury had
43 this combination of LESS errors. This difference was only seen in the fatigued state.

44 **Conclusions:** It might be the combination of little knee and trunk flexion displacement with knee
45 valgus during landing which predisposes an athlete to a second ACL injury, especially in a
46 fatigued state.

47 **Clinical relevance:** When screening athletes after ACL reconstruction for second ACL injury
48 risk, combining measurement of knee valgus with knee and trunk flexion displacement in a
49 fatigued state might be give more insight into risk than using the complete LESS score or
50 evaluating knee valgus as a sole risk factor.

51 **Keywords:** ACL reconstruction, return to sport, knee valgus, second ACL injury

52 **1. Introduction**

53 Movement quality has become an increasingly popular tool to guide return to sport (RTS)
54 decisions for athletes who want to return to pivoting sports after anterior cruciate ligament
55 reconstruction (ACLR).^{2,13} Several options are available to measure movement quality, ranging
56 from lab-based measurements to relatively easy-to-use on-field measurements. An example of
57 a frequently used movement quality measurement is the Landing Error Scoring System (LESS)
58 which consists of 17 movement quality items, with a lower score representing better movement
59 quality.⁹ Padua et al. found an association between LESS score and primary ACL injuries in
60 adolescent soccer athletes, and suggested a score of 5 as the optimal cut-off point, with a
61 sensitivity of 85% and a specificity of 64%.¹⁰ We, however, found no association between LESS
62 score and second ACL injuries in adult athletes returning to pivoting sports after ACLR.¹⁵
63 Despite the lack of scientific support for the predictive value of the LESS for second ACL
64 injuries, many clinicians use the LESS as an instrument to determine whether an athlete is
65 ready to safely return to pivoting sports after ACLR anyway.
66 Perhaps, to maximize the predictive value of the LESS we need to consider other ways of
67 analysing or applying the LESS. Two new approaches come to mind.
68 First, individual LESS items or a combination of a few items might demonstrate a stronger
69 predictive value for second ACL injuries than all LESS items together. Knee valgus is one of the
70 items that clinicians always mention as being important in preventing second ACL injuries, but
71 the only scientific evidence comes from studies focussing on primary ACL injuries.⁸ Studies
72 looking at second ACL injuries only showed that less hip external rotator moment during early
73 landing and little knee flexion displacement during hop-and-hold test are important associated
74 items.^{11,15}
75 Second, application of the LESS in fatigued athletes might also increase its predictive
76 capacities. In a recent cross-sectional study we found LESS score measured on the soccer field
77 to increase more in ACL-reconstructed recreational soccer players than in healthy recreational
78 soccer players when comparing a sport-specific fatigued state to a non-fatigued state. We
79 hypothesized that a higher fatigued LESS score might predispose the ACL-reconstructed
80 soccer players to a second ACL injury.¹⁴
81 In this exploratory study we aimed to investigate the plausibility of these new approaches of
82 analyzing and applying the LESS. The first goal was to assess whether movement quality
83 (measured on the soccer field with LESS score) in a non-fatigued or fatigued state is associated
84 with second ACL injuries during a three-year follow-up in ACL-reconstructed male recreational
85 soccer players who returned to soccer. The second goal was to explore whether individual
86 LESS items or a combination of a few items - in both the non-fatigued and fatigued state -
87 differed between soccer players who had a second ACL injury compared to those who did not
88 have second ACL injury.

89 **2. Materials and Methods**

90 This retrospective exploratory case series is a three-year follow-up study of a previously
91 published cross-sectional study comparing the effects of sport-specific fatigue on movement
92 quantity and quality RTS measurements in healthy and ACL-reconstructed recreational soccer
93 players.¹⁴ RTS measurements were all performed on the soccer field and were taken at the end
94 of rehabilitation (12.4 ± 3.5 months after surgery) for all ACL-reconstructed soccer players.
95 Apart from a double-leg countermovement jump with LESS score, RTS measurements also
96 included a single-leg hop test battery: vertical jump, hop for distance, and side hop.¹⁴ The LESS
97 has a good to excellent intrarater (ICC 0.82-0.99) and interrater (ICC 0.83-0.92) reliability.⁶
98 All RTS measurements were performed in a non-fatigued state and in a sport-specific fatigued
99 state. Fatigue was induced by a one-hour soccer training and the Borg RPE scale was used to
100 express the amount of fatigue. Borg RPE scale was 7.3 ± 1.1 during the non-fatigued RTS
101 measurements and 14.9 ± 1.1 during the fatigued measurements.¹⁴

102

103 *2.1 Participants and study procedure*

104 Three years after RTS measurements we asked all 14 ACL-reconstructed soccer players by
105 phone to participate in this follow-up study. They received additional information about the study
106 by e-mail and decided whether they wanted to partake afterwards. Once a soccer player agreed
107 to participate in this follow-up study, a 10-minute interview by phone was scheduled. A
108 standardised survey about soccer participation and second ACL injuries was used to guide this
109 interview.

110 All subjects gave informed consent for participation in this follow-up study. The medical ethics
111 committee of the Máxima Medisch Centrum Eindhoven (the Netherlands) deemed that our study
112 did not fall within the remit of the Medical Research Involving Human Subjects Act (N19.117).

113

114 *2.2 Statistical analyses*

115 There were no missing values. For all soccer players who returned to soccer, descriptive
116 statistics were used to present age, height, weight, operated leg, dominant leg, soccer exposure
117 in months, non-fatigued LESS score and fatigued LESS score.

118 To analyse differences in baseline characteristics for soccer players who had a second ACL
119 injury and those who had not independent samples t-tests (continuous variables) or chi-square
120 tests (nominal variables) were performed. Soccer players who did not return to soccer (or any
121 other pivoting sport) were excluded from analyses, because they had a lower chance for a
122 second ACL injury attributable to much lower risk exposure.

123 The association between non-fatigued or fatigued LESS score and second ACL injury rate when
124 returning to soccer was investigated using Fisher's exact test. LESS score was expressed as a
125 dichotomous variable (meeting RTS criterion of ≤ 5 yes or no). Analysis were performed for the

126 non-fatigued and fatigued state separately. The absolute risk (AR) was calculated with
127 crosstabs, comparing soccer players who did not meet the LESS criterion of ≤ 5 with those who
128 did meet the LESS criterion.

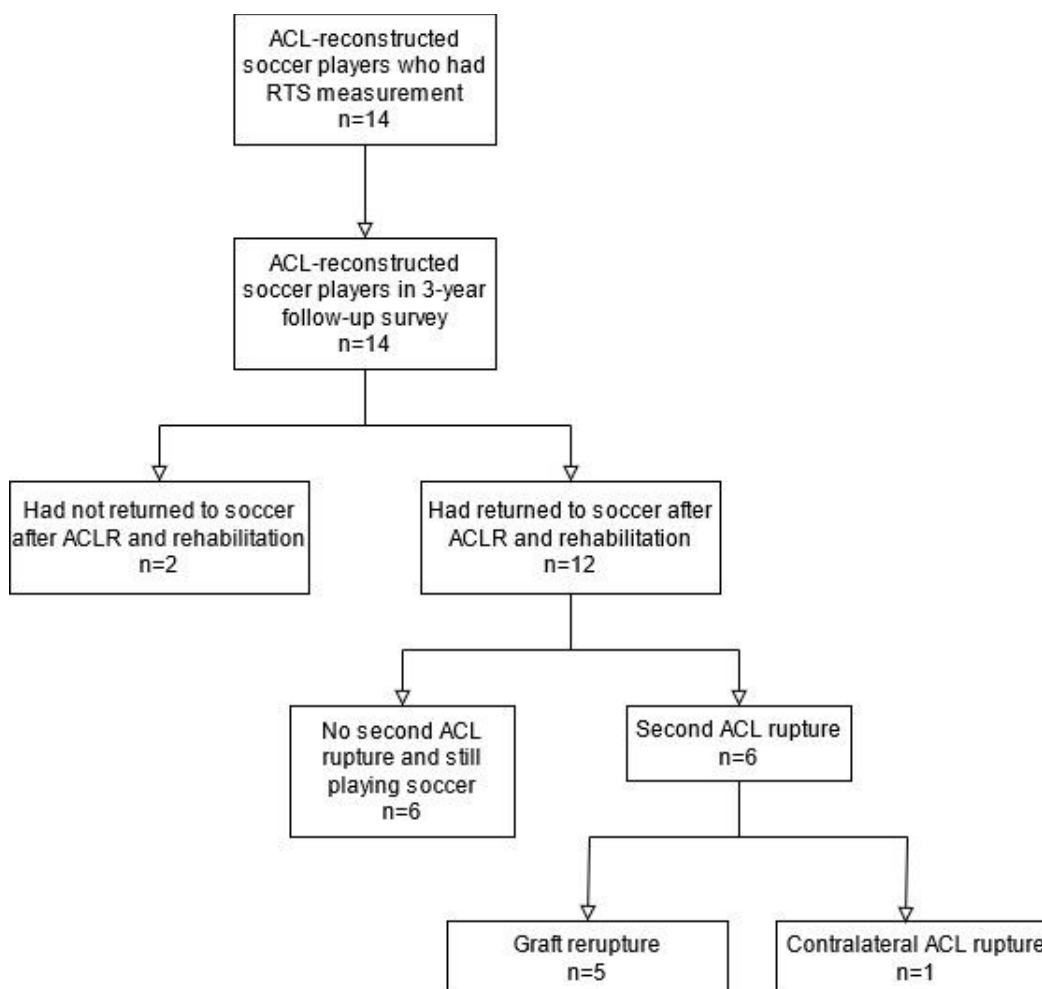
129 Individual LESS items were analysed in an explorative way. For every item, both in the non-
130 fatigued and fatigued state, the number and percentage of soccer players with and without
131 second ACL injury not meeting the item was described. We arbitrarily deemed a $\geq 50\%$
132 difference between groups sufficient to identify clinically meaningful differences and to minimise
133 findings based on chance.

134

135 3. Results

136 All 14 ACL-reconstructed soccer players agreed to participate in this follow-up study. Two of
137 them had not returned to soccer (or any other pivoting sport) after ACLR due to complaints of
138 the operated knee and were therefore excluded from analyses. The other 12 ACL-reconstructed
139 soccer players returned to recreational level competitive soccer and were included in the
140 analyses (Figure 1).

141



142

143 **Figure 1: Flowchart of ACL-reconstructed soccer players.**

144 **3.1 Second ACL injuries**

145 Descriptives for all ACL-reconstructed soccer players separately are presented in Table 1. Six
 146 soccer players (50%) had a second ACL injury during the three-year follow-up period. Five were
 147 non-contact graft reruptures and one was a non-contact contralateral ACL rupture (soccer
 148 player 6). Second ACL ruptures occurred between 1 and 24 months after returning to soccer
 149 (median 4.5 months). Four soccer players ruptured their ACL during training, the other two
 150 during a game. Second ACL injuries happened within 30 to 80 minutes (median 60 minutes)
 151 from the beginning of training or game.

152

Table 1: Descriptives for all ACL-Reconstructed Soccer Players separately.

Soccer player	Second ACL rupture?	Soccer exposure in months	Reinjury during game or training?	In-game/training timing in minutes	Non-fatigued LESS score	Fatigued LESS score
1	Yes	1	Training	80	3	3
2	Yes	24	Training	30	6	10
3	Yes	2	Game	70	1	6
4	Yes	8	Game	70	4	7
5	Yes	6	Training	50	4	8
6	Yes	3	Training	40	4	6
7	No	34	n.a.	n.a.	4	6
8	No	35	n.a.	n.a.	2	6
9	No	36	n.a.	n.a.	4	7
10	No	36	n.a.	n.a.	4	6
11	No	34	n.a.	n.a.	2	6
12	No	36	n.a.	n.a.	5	8

153

154 **3.2 Association between LESS score and second ACL injuries**

155 Characteristics of soccer players with second ACL injury did not significantly differ from soccer
 156 players without second ACL injury (Table 2). In the non-fatigued state one soccer player did not
 157 meet the LESS criterion of ≤ 5 and he had a second ACL injury. In the fatigued state one soccer
 158 players did meet the LESS RTS criterion, but he had a second ACL injury (Table 1). Fisher's
 159 exact test showed no association between not meeting the non-fatigued ($p=1.00$; AR 100%
 160 versus 45%) or fatigued ($p=0.46$; AR 45% versus 100%) LESS RTS criterion and second ACL
 161 injuries.

Table 2: Characteristics of ACL-Reconstructed Soccer Players with and without Second ACL Injury.

	Soccer players with second ACL injury	Soccer players without second ACL injury	p-value
Age in years, mean \pm SD	20.7 \pm 2.7	23.8 \pm 2.9	0.130
Height in m, mean \pm SD	181.3 \pm 3.2	177.8 \pm 8.7	0.378
Weight in kg, mean \pm SD	80.7 \pm 5.3	75.5 \pm 10.5	0.308
ACLR leg, N (%) right	2 (33%)	3 (50%)	0.558
Dominant leg = operated leg?, N (%) yes	2 (33%)	4 (66%)	0.248
Non-fatigued LESS score, mean \pm SD	3.7 \pm 1.6	3.5 \pm 1.2	0.845
Fatigued LESS score, mean \pm SD	6.7 \pm 2.3	6.5 \pm 0.8	0.873

162
163 *3.3 Exploratory analysis of LESS items*
164 Exploring individual LESS items, three $\geq 50\%$ differences were found between soccer players
165 with second ACL injury and those without second ACL injury, all three in the fatigued state
166 (Table 3).
167 In the fatigued state soccer players with second ACL injury:
168 • less often had a small knee flexion angle ($\leq 30^\circ$) at initial contact compared to those without
169 second ACL injury (Item 1: 17% respectively 67%);
170 • more often had little knee flexion displacement ($< 45^\circ$) from initial contact to maximal knee
171 flexion compared to those without second ACL injury (Item 12: 67% respectively 0%);
172 • more often had no trunk flexion displacement between initial contact and maximal knee
173 flexion compared to those without second ACL injury (Item 14: 50% respectively 0%).
174 The occurrence of knee valgus (both item 5 and 15) did not differ between soccer players with
175 or without second ACL injury, nor in the non-fatigued and in the fatigued state.
176 When combining items, three (50%) of the soccer players with second ACL injury had an error
177 on item 12, 14 and 15, indicating little knee and trunk flexion displacement combined with knee
178 valgus, while non of the soccer players without second ACL injury had this combination of items
179 (see Appendix).

Table 3: Exploratory Analysis of Individual LESS Items and Differences between Soccer Players with and without Second ACL Injury.

State	LESS item	Not meeting item if	Number (%) of soccer players with second ACL injury not meeting item	Number (%) of soccer players without second ACL injury not meeting item
Non-fatigued	1	Knee flexion angle $\leq 30^\circ$ (initial contact)	0 (0)	1 (17)
	2	The thigh of test leg is in line with the trunk (initial contact)	0 (0)	0 (0)
	3	The trunk is vertical or extended on the hips (initial contact)	0 (0)	0 (0)
	4	If the foot lands heel to toe or flat	0 (0)	0 (0)
	5	A line straight down from the center of the patella is medial to the midfoot (initial contact)	2 (33)	3 (50)
	6	The midline of the trunk is flexed to the right or left side (initial contact)	4 (67)	2 (33)
	7	A line down from the tip of the shoulders is inside the foot (entire foot contact)	3 (50)	3 (50)
	8	A line down from the tip of the shoulders is outside the foot (entire foot contact)	2 (33)	1 (17)
	9	The foot is internally rotated $>30^\circ$ (between initial contact and maximal knee flexion)	0 (0)	0 (0)
	10	The foot is externally rotated $>30^\circ$ (between initial contact and maximal knee flexion)	0 (0)	0 (0)
	11	One foot lands before the other or if one foot lands heel to toe and the other toe to heel	1 (17)	2 (33)
	12	The knee flexes $<45^\circ$ (between initial contact and maximal knee flexion)	2 (33)	0 (0)
	13	The thigh does not flex more on the trunk (between initial contact and maximal knee flexion)	0 (0)	0 (0)
	14	The trunk does not flex more (between initial contact and maximal knee flexion)	0 (0)	0 (0)
	15	A line straight down from the center of the patella runs through or is medial to the great toe (at maximum knee valgus)	5 (83)	4 (67)

Fatigued	1	Knee flexion angle $\leq 30^\circ$ (initial contact)	1 (17)	4 (67)
	2	The thigh of test leg is in line with the trunk (initial contact)	0 (0)	1 (17)
	3	The trunk is vertical or extended on the hips (initial contact)	1 (17)	1 (17)
	4	If the foot lands heel to toe or flat	0 (0)	1 (17)
	5	A line straight down from the center of the patella is medial to the midfoot (initial contact)	4 (67)	3 (50)
	6	The midline of the trunk is flexed to the right or left side (initial contact)	3 (50)	3 (50)
	7	A line down from the tip of the shoulders is inside the foot (entire foot contact)	2 (33)	4 (67)
	8	A line down from the tip of the shoulders is outside the foot (entire foot contact)	3 (50)	1 (17)
	9	The foot is internally rotated $>30^\circ$ (between initial contact and maximal knee flexion)	0 (0)	0 (0)
	10	The foot is externally rotated $>30^\circ$ (between initial contact and maximal knee flexion)	2 (33)	2 (33)
	11	One foot lands before the other or if one foot lands heel to toe and the other toe to heel	1 (17)	3 (50)
	12	The knee flexes $<45^\circ$ (between initial contact and maximal knee flexion)	4 (67)	0 (0)
	13	The thigh does not flex more on the trunk (between initial contact and maximal knee flexion)	1 (33)	0 (0)
	14	The trunk does not flex more (between initial contact and maximal knee flexion)	3 (50)	0 (0)
	15	A line straight down from the center of the patella runs through or is medial to the great toe (at maximum knee valgus)	5 (83)	5 (83)

181 **4. Discussion**

182 This study showed there is no association between non-fatigued and fatigued LESS score and
183 second ACL injuries in ACL-reconstructed recreational soccer players who returned to soccer.
184 However, when exploring individual LESS items or a combination of a few items in the fatigued
185 state, 50% of the soccer players with second ACL injury had little knee and trunk flexion
186 displacement combined with knee valgus during landing. None of the soccer players without
187 second ACL injury had this combination of items: they also had knee valgus, but with greater
188 knee and trunk flexion displacement. Interestingly, soccer players with second ACL injury more
189 often had a greater knee flexion angle at initial contact.

190
191 Despite the small sample of this exploratory cohort study, these findings are in line with a
192 previous study of our group in which we found no association between LESS score and second
193 ACL injury rate in adult athletes returning to pivoting sports after ACLR.¹⁵ In the same study, we
194 found less knee flexion displacement during hop-and-hold test to be associated with second
195 ACL injuries.¹⁵ Also, biomechanical studies have indicated that proximal factors influence knee
196 loading, and that actively flexing the trunk produces concomitant increases in hip and knee
197 flexion.^{1,12} Coupling of proximal and distal joints increases the demands on the hip extensors
198 (i.e. gluteal muscles, hamstrings) and decreases the demands on the knee extensors and
199 thereby lowers the strain on the ACL.¹² ACL injuries happen short (40-70 ms) after initial contact
200 and quick absorption of ground reaction forces by flexing the trunk and knee could potentially
201 protect the ACL from rupturing, even when knee valgus is occurring.^{1,3} Probably, knee and trunk
202 flexion at initial contact are of less importance, since more soccer players without second ACL
203 injury had a small knee flexion angle at that time point compared to the soccer players with
204 second ACL injury.

205 Since almost all soccer players in this study (83%) had knee valgus during landing in the
206 fatigued state, this individual item might not be a sole risk factor for second ACL injury. It might
207 be the combination of little knee and trunk flexion displacement and knee valgus during landing
208 which predisposes an athlete to second ACL injury, especially in a fatigued state.

209
210 It could be questioned whether our group of ACL-reconstructed soccer players had low-quality
211 rehabilitation. To be included in our previous study measuring RTS tests on the soccer field,
212 soccer players were recruited via experienced sports physical therapists who worked according
213 to ACLR practice guidelines.^{13,14} While quality of the rehabilitation process could never be
214 completely transparent, we think these soccer players all had a high-quality rehabilitation,
215 including strength training, neuromuscular training, on-field training and multiple test moments.
216 However, in future more attention should be paid to avoiding an erect landing posture in
217 combination with knee valgus, especially when being fatigued.

218 Besides, we postulate that well-known RTS test batteries including strength tests, hop tests, and
219 movement quality measurements with LESS need to be critically reviewed. Since strength and
220 hop tests have an association with second ACL injuries in athletes who return to pivoting sports
221 in multiple studies, we believe these are minimal RTS requirements.^{4,5,7,15} When using
222 movement quality RTS tests, we advise analyzing individual items in a (sport specific) fatigued
223 state, because these individual LESS items might give more insight into second ACL injury risk.

224

225 **5. Conclusion**

226 There is no associated between non-fatigued or fatigued LESS score and second ACL injury in
227 ACL-reconstructed recreational soccer players who returned to soccer. However, soccer players
228 with second ACL injury more often had little knee and trunk flexion displacement in the fatigued
229 state, while there were no differences in the occurrence of knee valgus. We postulate that knee
230 valgus is not the sole factor in second ACL injury risk. It might be the combination of little knee
231 and trunk flexion displacement with knee valgus during landing which predisposes an athlete to
232 a second ACL injury, especially in a fatigued state.

233 **References**

- 234 1. Blackburn JT, Padua DA. Influence of trunk flexion on hip and knee joint kinematics during a
235 controlled drop landing. *Clin Biomech.* 2008;23(3):313-319.
- 236 2. Davies GJ, McCarty E, Provencher M, Manske RC. ACL Return to sport guidelines and
237 criteria. *Curr Rev Musculoskelet Med.* 2017;10(3):307-314.
- 238 3. Della Villa F, Buckthorpe M, Grassi A, et al. Systematic video analysis of ACL injuries in
239 professional male football (soccer): injury mechanisms, situational patterns and
240 biomechanics study on 134 consecutive cases. *Br J Sports Med.* 2020;54(23):1423-1432.
- 241 4. Grindem H, Snyder-Mackler L, Moksnes H, Engebretsen L, Risberg MA. Simple decision
242 rules can reduce reinjury risk by 84% after ACL reconstruction: the Delaware-Oslo ACL
243 cohort study. *Br J Sports Med.* 2016;50(13):804-808.
- 244 5. Grindem H, Engebretsen L, Axe M, Snyder-Mackler L, Risberg MA. Activity and functional
245 readiness, not age, are the critical factors for second anterior cruciate ligament injury - the
246 Delaware-Oslo ACL cohort study. *Br J Sports Med.* 2020;54(18):1099-1102.
- 247 6. Hanzlíková I, Hébert-Losier K. Is the landing Error Scoring System reliable and valid? A
248 systematic review. *Sports Health.* 2020;12(2):181-188.
- 249 7. Kyritsis P, Bahr R, Landreau P, Miladi R, Witvrouw E. Likelihood of ACL graft rupture: not
250 meeting six clinical discharge criteria before return to sport is associated with a four times
251 greater risk of rupture. *Br J Sports Med.* 2016;50(15):946-951.
- 252 8. Larwa J, Stoy C, Chafetz RS, Boniello M, Franklin C. Stiff landings, core stability, and
253 dynamic knee valgus: a systematic review on documented anterior cruciate ligament
254 ruptures in male and female athletes. *Int J Environ Res Public Health.* 2021;18(7):3826.
- 255 9. Padua DA, Marshall SW, Boling MC, Thigpen CA, Garrett Jr WE, Beutler AI. The Landing
256 Error Scoring System (LESS) is a valid and reliable clinical assessment tool of jump-landing
257 biomechanics: The JUMP-ACL study. *Am J Sports Med.* 2009;37(10):1996-2002.
- 258 10. Padua DA, DiStefano LJ, Beutler AI, de la Motte SJ, DiStefano MJ, Marshall SW. The
259 Landing Error Scoring System as a screening tool for an anterior cruciate ligament injury-
260 prevention program in elite youth soccer athletes. *J Athl Train.* 2015;50(6):589-595.
- 261 11. Paterno MV, Schmitt LC, Ford KR, et al. Biomechanical measures during landing and
262 postural stability predict second anterior cruciate ligament injury after anterior cruciate
263 ligament reconstruction and return to sport. *Am J Sports Med.* 2010;38(10):1968-1978.
- 264 12. Powers CM. The influence of abnormal hip mechanics on knee injury: a biomechanical
265 perspective. *J Orthop Sports Phys Ther.* 2010;40(2):42-51.
- 266 13. van Melick N, van Cingel REH, Brooijmans F, et al. Evidence-based clinical practice update:
267 practice guidelines for anterior cruciate ligament rehabilitation based on a systematic review
268 and multidisciplinary consensus. *Br J Sports Med.* 2016;50(24):1506–1515.

- 269 14. van Melick N, van Rijn L, Nijhuis-van der Sanden MWG, Hoogeboom TH, van Cingel REH.
270 Fatigue affects quality of movement more in ACL-reconstructed soccer players than in
271 healthy soccer players. *Knee Surg Sports Traumatol Arthrosc.* 2019;27(2):549-555.
- 272 15. van Melick N, Pronk Y, Nijhuis-van der Sanden MWG, Rutten S, van Tienen TG,
273 Hoogeboom TH. Meeting movement quantity or quality return to sport criteria is associated
274 with reduced second ACL injury rate. *J Orthop Res.* 2022;40(1):117-128.

275 **Appendix: Exploratory analysis of individual LESS items per soccer player in the fatigued state**

276

	Soccer player											
	1	2	3	4	5	6	7	8	9	10	11	12
LESS item 1			X				X		X	X	X	
LESS item 2											X	
LESS item 3		X							X			
LESS item 4												X
LESS item 5	X	X	X	X			X			X		X
LESS item 6			X	X	X			X		X		X
LESS item 7		X		X			X		X		X	X
LESS item 8			X		X	X		X				
LESS item 9												
LESS item 10		X				X	X				X	
LESS item 11			X					X	X			X
LESS item 12		X		X	X	X						
LESS item 13					X							
LESS item 14		X		X	X							
LESS item 15		X	X	X	X	X	X	X		X	X	X

An "X" indicates an error on a specific LESS item.

277