

Running title: Early sport specialization impact on injury rates among elite athletes

1 **Title:** Early Sport Specialization Impact on Rates of Injury in Collegiate and Professional Sport
2 Participation: A Systematic Review and Meta-analysis

3 **Authors:**

4 • Bahman Adlou

5 ○ Auburn University, 301 Wire Rd, Auburn, (AL), United States; School of
6 Kinesiology

7 ○ bza0058@auburn.edu

8 • Wendi Weimar

9 ○ Auburn University, 301 Wire Rd, Auburn, (AL), United States; School of
10 Kinesiology

11 • Christopher Wilburn

12 ○ Auburn University, 301 Wire Rd, Auburn, (AL), United States; School of
13 Kinesiology

14 • Alan Wilson

15 ○ Auburn University, 203 Swingle Hall, Auburn, (AL), United States; School of
16 Fisheries, Aquaculture & Aquatic Sciences

17 **Lead and Corresponding Author:** Bahman Adlou; email: bahadlooman@gmail.com (cc email:
18 bza0058@auburn.edu, if applicable)

19 **ORCID:** Bahman Adlou: 0000-0001-6912-1626. Not available for contributing authors.

20 **Word count:** 3187

Running title: Early sport specialization impact on injury rates among elite athletes

21 **Abstract**

22 Early sport specialization (ESS) is common among adolescent athletes due to desire of reaching elite
23 status; however, the long-term impact of ESS on sports injury (SI) rates is not fully understood. We
24 performed a systematic review and meta-analysis of the literature to evaluate the effect of ESS on SI rates
25 during elite sport participation. Search included PubMed, Web of Science, SPORTDiscus, EMBASE,
26 Cochrane, CINAHL, ERIC, and Medline databases. Preferred Reporting Items for Systematic Reviews
27 and MetaAnalyses (PRISMA) guidelines were followed to identify published peer-reviewed articles from
28 inception to 23 March 2023. Eligible studies reported numbers of elite athletes in collegiate, national, and
29 professional teams in ESS and their counterpart category, as well as the portion of each group with at least
30 one SI. Studies on concussion or non-contact injuries, or without explicit injury reports during elite sport
31 participation were excluded. Five articles were included in the review; 3 reported SIs on collegiate and 2
32 reported on professional athletes. A total of 3087 athletes were included (ESS = 45%). The overall effect
33 was not significant and demonstrated that ESS athletes had a lower odd (OR=0.7) of a SI during elite
34 sport participation. Articles with clear reports are scarce, and thus limit the impact of the findings in this
35 study. High heterogeneity was evident in this analysis, largely due to lack of standardized terminology,
36 evaluation, and data representation. Prospective studies that consider diverse athlete population of the
37 same sport are warranted.

38 Keywords: multisport, adolescent, NCAA, athlete, sport-sampling, prevention, injury-rate

39

Running title: Early sport specialization impact on injury rates among elite athletes

40 **Introduction**

41 Participating in organized sports (e.g., professional and school teams, traveling teams, city clubs, or off-
42 season camps sports) has become increasingly common among middle- and high school aged adolescents.
43 According to the National Federation of State High School Associations, the number of adolescent
44 athletes in the United States (U.S.) grew by nearly one million over the last decade, reaching to
45 approximately 7.8 million adolescent athletes[1]. For many of these young athletes, there is pressure from
46 their peers, parents, and coaches to focus on one sport[2–5]. This sport participation pattern is commonly
47 referred to as *early sports specialization* (ESS) in the literature[6,7], which is defined as year-round
48 single-sport participation at the exclusion of other sports from a young age[8,9]. Although sport
49 participation comes with numerous benefits, such as improved physical fitness and social development
50 especially for adolescents, ESS reduces unstructured and free play [10], with evidence indicating that it
51 increases rates of overuse injuries, burnouts, and even withdrawal from the sport[11,12].

52 The increasing pressure on adolescent athletes for ESS in the U.S. is fueled in part by the popular belief
53 that ESS leads to increased success with scholarship attainment at collegiate level, reaching elite athletic
54 status (e.g., national team), receiving endorsement and sponsorships, or signing professional sports
55 contracts[2–5]. However, there is evidence that suggests this may not be the case[13,14], and the potential
56 negative consequences of ESS including increased risk of injury outweigh the benefits[15]. This concern
57 has prompted involvement of governing bodies and sports science and medicine professionals to educate
58 the public on the risk-benefit ratio of ESS among adolescent athletes.

59 The American Orthopaedic Society for Sports Medicine (AOSSM) published a consensus statement in
60 2016, which recommended that young athletes should delay specialization until at least late adolescence
61 and should participate in multiple sports throughout childhood [10]. The American Medical Society for
62 Sports Medicine (AMSSM) Youth Early Sport Specialization Summit in 2018 expanded upon the
63 AOSSM statement to define a research agenda for youth sport specialization in the U.S. [16], which
64 highlighted the need for further research to better understand the risks and benefits of ESS. A recent
65 comprehensive review found athletes with high sport specialization at an increased risk of sustaining an
66 overuse injury compared with multisport and low sport specialized athletes, and concluded that ESS is
67 associated with an increased risk of overuse and musculoskeletal injuries[17].

68 Various studies have also investigated the long-term effects of ESS on injury rates, such as in collegiate
69 leagues. In a study on collegiate athletes, Post et al. (2017) found that those who specialized in their
70 collegiate sport before the age of 12 had a significantly higher risk of lower extremity injuries compared
71 to those who did not specialize early[18]. In another study, the authors analyzed sports specialization in

Running title: Early sport specialization impact on injury rates among elite athletes

72 NCAA Division I athletes and found that single-sport-specialized athletes were at a greater risk of injury
73 than those who participated in multiple sports before the age of 12[17]. These findings suggest that ESS
74 could contribute to the increased risk of sports injuries in elite sport participation, including the collegiate,
75 national, or international leagues.

76 Overall, the literature suggests that ESS may lead to increased risk of sport injuries and does not
77 necessarily increase the chances of achieving elite athletic status. We hypothesized that elite athletes who
78 specialize in a single-sport early (ESS) present with a higher rate of injuries in their elite sport
79 participation (i.e., collegiate, professional, national/international level) than those who did not specialize
80 early. A comprehensive evaluation of the association between ESS and injury rates among athletes will
81 aid the informed group decision-making by the adolescent athlete and their parents and coaches before
82 committing to a single-sport participation at a young age. However, there is no quantitative analysis of the
83 peer-reviewed data to show if individuals who specialized in their sport early sustained injuries at a
84 greater rate than those who were not early specializers. Therefore, in this systematic review and meta-
85 analysis, we quantitatively evaluate the impact of ESS on injury rates in a sample of collegiate, national,
86 and professional athletes.

87 **Methods**

88 *Search Strategy and selection criteria*

89 A systematic search was performed in accordance with updated Preferred Reporting Items for Systematic
90 Reviews and Meta-Analysis (PRISMA) guidelines[19]. The electronic search was executed by two
91 independent reviewers (BA, WW) through the following databases: Web of Science, Cochrane, PubMed,
92 EMBASE, and EMBSCO-hosted registries, including SPORTDiscus, Cumulative Index to Nursing and
93 Allied Health Literature (CINAHL), Educational Resources Information Center (ERIC), and Medline
94 from inception until 23 March 2023. The search query was prepared by the lead author (BA) using
95 Boolean operators in the following format: (("sport specialization" OR "sport specialisation" OR year-
96 round OR single?sport OR multi?sport OR sport?sampling) AND (young OR youth OR pediatric OR
97 high?school OR child* OR adolescen*) AND (injur* OR sport?injury OR injury risk) AND (elite OR pro
98 OR professional OR collegiate OR college OR league OR national OR Olympic)).

99 Duplication and the eligibility criteria, including language and article type, were automatically filtered.
100 All remaining article titles and abstracts were independently screened for eligibility by two reviewers
101 (BA, WW). Full texts of all potentially eligible articles were retrieved, or requested where necessary, for
102 independent eligibility criteria screening by each reviewer. Articles that met the following eligibility
103 criteria were included in this review and meta-analysis:

Running title: Early sport specialization impact on injury rates among elite athletes

104 *Inclusion Criteria*

- 105 • Articles published in English or Farsi languages.
- 106 • Included athlete non-contact musculoskeletal injury quantities during elite sport participation.
- 107 • Reports of any injury types that resulted in permanent or temporary (>3-day) cease of sport
- 108 participation.
- 109 • Clear statement of *elite sport status*, defined by the athlete participating in any of the following
- 110 leagues worldwide: collegiate, professional leagues, national leagues, and Olympics or other
- 111 world-stage competitions. Under-14 years old worldwide competition was not considered as elite
- 112 sport participation status.
- 113 • Studies must include early sport specialization (ESS) definition matching one of the following
- 114 throughout adolescence sport participating before elite status: participating in one sport 8+ month
- 115 year-round; participating in one sport at the exclusion of others (i.e., single-sport participation), or
- 116 used 3-point sport specializing criteria [20]. Non-early sport specialization (non-ESS) were those
- 117 groups in opposition of the above statements or defined as “multisport athletes” during
- 118 adolescence before elite status by the authors.
- 119 • Early sport specialization age cut-off from 12 years old and older for both male and female
- 120 athletes.

121 *Exclusion Criteria*

- 122 • Concussion and direct-contact injuries
- 123 • Case studies, abstracts, and conference proceedings
- 124 • Combination of injury histories (rates or numbers) from non-elite sport participation for elite
- 125 athletes and injury rates from elite sport participation (e.g., included injury quantities during
- 126 youth non-elite sports for the currently elite athletes).
- 127 • Sport specialization 3-point criteria [20] without comparable non-specialized group.

128 After full-text review independently by authors (BA, WW), studies in agreement by both reviewers were
129 included for analysis, and a third reviewer (CW) screened the studies that were marked eligible by only
130 one of the reviewers. Additionally, the third reviewer served as the tiebreaker for inclusion of studies
131 where necessary. All three reviewers (BA, WW, CW) collectively screened all other articles from
132 citations. To be included, studies had to present a clear total number of athletes in each group, ESS versus
133 late specializers (non-ESS), and the number of athletes from each group who reported at least one injury
134 in their elite sport participation. A final list of included articles was aggregated (Microsoft Excel, v. 2303)
135 through consensus for data extraction.

Running title: Early sport specialization impact on injury rates among elite athletes

136 *Data extraction*

137 Data extraction was independently done by two reviewers (BA, WW). A systematic extraction form
138 (Microsoft Excel, v. 2303) was used for each article in full review to collect the following data along with
139 the article info: (1) sample descriptions for each participant category (e.g., sample size and mean age
140 across categories); (2) stage and type of elite sport participation (e.g., collegiate basketball or U.S.
141 National Football League); and (3) study method (e.g., retrospective survey or descriptive epidemiology
142 study). Data categories included the number of athletes in each of the following four categories: early
143 sport specialized, number of early sport specializers with injuries, late sport specialized, and the number
144 of late sport specializers with injuries. Reviewed article data in table format were transcribed manually,
145 and data in figure plot format were transcribed using the updated version of a dedicated R Programming
146 package [21]. Extracted data were compared and a final dataset was established for data analysis through
147 consensus by all three reviewers (BA, WW, CW).

148 *Primary outcome*

149 The primary outcome was to evaluate the impact of early sport specialization on long term rates of non-
150 contact, sport injuries.

151 *Data analysis*

152 Natural logarithm of odds ratio (logOR) was used to calculate the effect size for each study, along with
153 the variance as following:

154
$$\log OR: \ln(A*D / B*C)$$

155
$$\log OR \text{ variance: } 1/A + 1/B + 1/C + 1/D$$

156 where A and C are the numbers of uninjured and injured ESS athletes, respectively, and B and D are the
157 numbers of uninjured and injured non-ESS athletes, respectively. A positive logOR (or an Odds ratio of
158 less than 1) indicates that more of those who specialized in sports early (ESS) suffered from injuries in
159 their elite sports participation compared to non-ESS. This model accounts for both within-study
160 variability and between-study heterogeneity.

161 The meta-analysis was performed using a weighted random-effects model with the restricted maximum
162 likelihood (REML) estimator[22]. The estimated tau-squared (τ^2) value was used as an indicator of the
163 extent of heterogeneity across the included studies. Additionally, the I^2 statistic was computed to assess
164 the proportion of total variability attributable to heterogeneity. Q statistic was evaluated to assess the
165 presence of heterogeneity, and its associated p-value was used to determine if the observed heterogeneity

Running title: Early sport specialization impact on injury rates among elite athletes

166 is statistically significant (i.e., not likely due to chance alone). The model results were reported as the
167 estimated effect size (logOR), its standard error (SE), z-value, and p-value. The 95% confidence interval
168 (CI) for the effect size was calculated to provide a range of plausible values. All statistical analyses and
169 visualization were executed using RStudio (Posit Software. PBC, Build 386) via the *metafor* package (v.
170 4.2-0)[23].

171 *Sensitivity analysis and Risk of Bias*

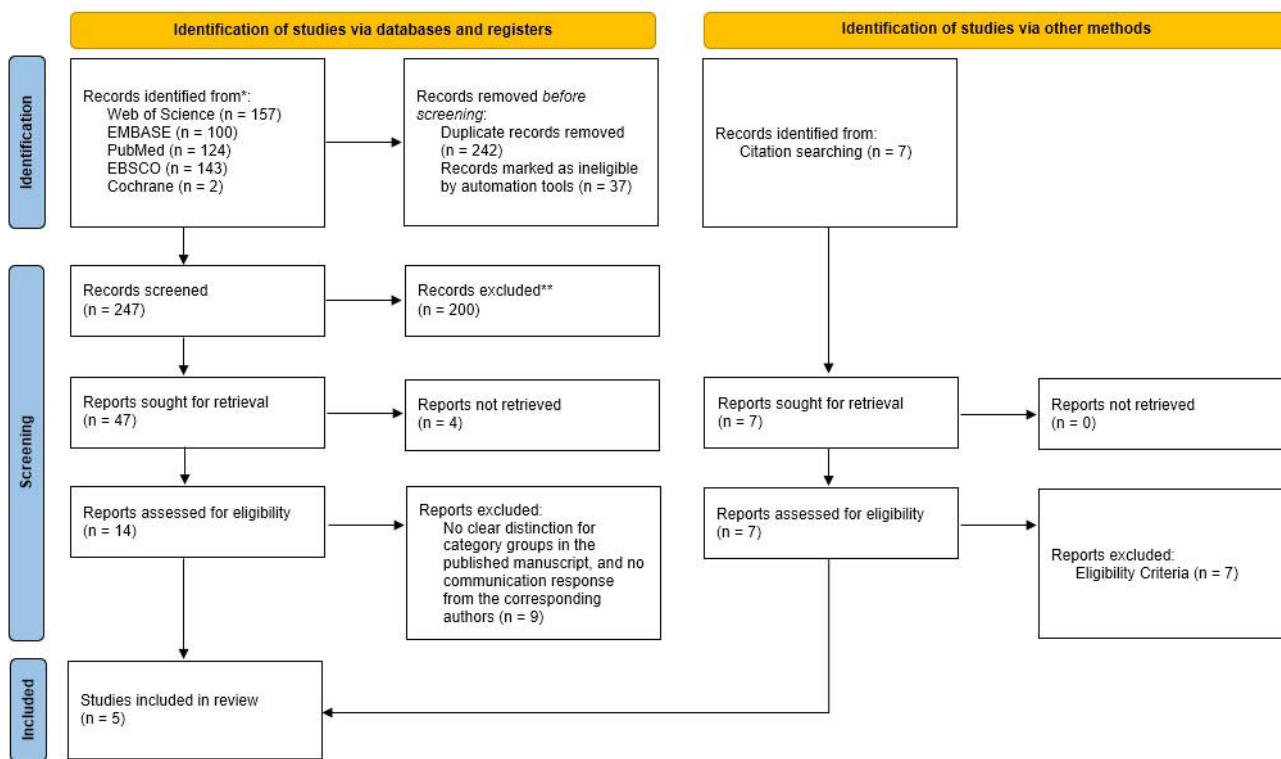
172 To assess publication bias, Egger's test was performed[23]. Nonparametric (rank-based) trim-and-fill
173 method by Duval and Tweedie [24] was used to estimate the number of studies missing from the analysis
174 due to suppression of the most extreme results on one side of the funnel plot (funnel plot asymmetry). To
175 assess the robustness of the results, a leave-one-out sensitivity was performed. By repeating the meta-
176 analysis multiple times and leaving out one study each time, the influence of single study on the overall
177 results was evaluated. Various influence measures can be used to assess the influence of individual studies
178 on the overall results of the meta-analysis and to check the robustness of the meta-analysis, the influence
179 test was performed.

180 **Result**

181 *Search Results*

182 The search strategy resulted in 526 total studies. Seven additional studies were identified through other
183 sources (Figure 1).

Running title: *Early sport specialization impact on injury rates among elite athletes*



184

185 Figure 1. Flowchart of study selection. Flowchart adapted from the PRISMA 2020 statement.

186 Following removal of articles for duplication, article type, and language criteria, a total of 247 potentially
 187 eligible studies remained for title and abstract screening, from which two hundred studies were removed
 188 before full-text screening per eligibility criteria. Of the remaining forty-seven, 13 studies were agreed
 189 upon by all three reviewers for data extraction. Where possible, corresponding authors to each study were
 190 contacted and followed-up with to seek clarification or gain access to the dataset used in their studies. Of
 191 the 13 studies[5,25–36], five studies were included in the systematic review and meta-analysis due
 192 eligibility criteria or accessibility to data for analysis[5,25,29,30,34].

193 *Study characteristics*

194 A total of 3087 athletes from five studies were included in this study for analysis. Forty-five percent
 195 (1396) of the athletes were identified as early sport specialists. Four studies reported on the sex of the
 196 athlete, which aggregated to 1989 males and 915 female athletes (Table 1).

197 Table 1. Summary Table of the athletes from the included studies; N = number of participants; ESS =
 198 early sport specialized; non-ESS = non-early sport specialized.

<i>Study</i>	<i>Elite</i>	<i>Total</i>	<i>Male</i>	<i>Female</i>	<i>ESS</i>	<i>N</i>	<i>ESS</i>	<i>non-</i>	<i>non-ESS</i>
--------------	--------------	--------------	-------------	---------------	------------	----------	------------	-------------	----------------

Running title: Early sport specialization impact on injury rates among elite athletes

	<i>status</i>	<i>Athletes N</i>	<i>Athletes N</i>	<i>Athletes N</i>		<i>Injured N</i>	<i>ESS N</i>	<i>Injured N</i>
<i>Ahlquist et al. (2020)</i>	NCAA DI	183	61	141	99	45	84	32
<i>Rugg et al. (2021)</i>	NCAA DI	1550	1006	544	280	84	1270	452
<i>Confino et al. (2019)</i>	MLB	746	746	0	506	216	240	110
<i>Rugg et al. (2018)</i>	NBA	237	237	0	201	86	36	9
<i>Sweeney et al. (2021)</i>	NCAA DI	371	0	371	310	269	61	41
<i>Total</i>		<i>3087</i>	<i>2050</i>	<i>1056</i>	<i>1396</i>	<i>700</i>	<i>1691</i>	<i>644</i>

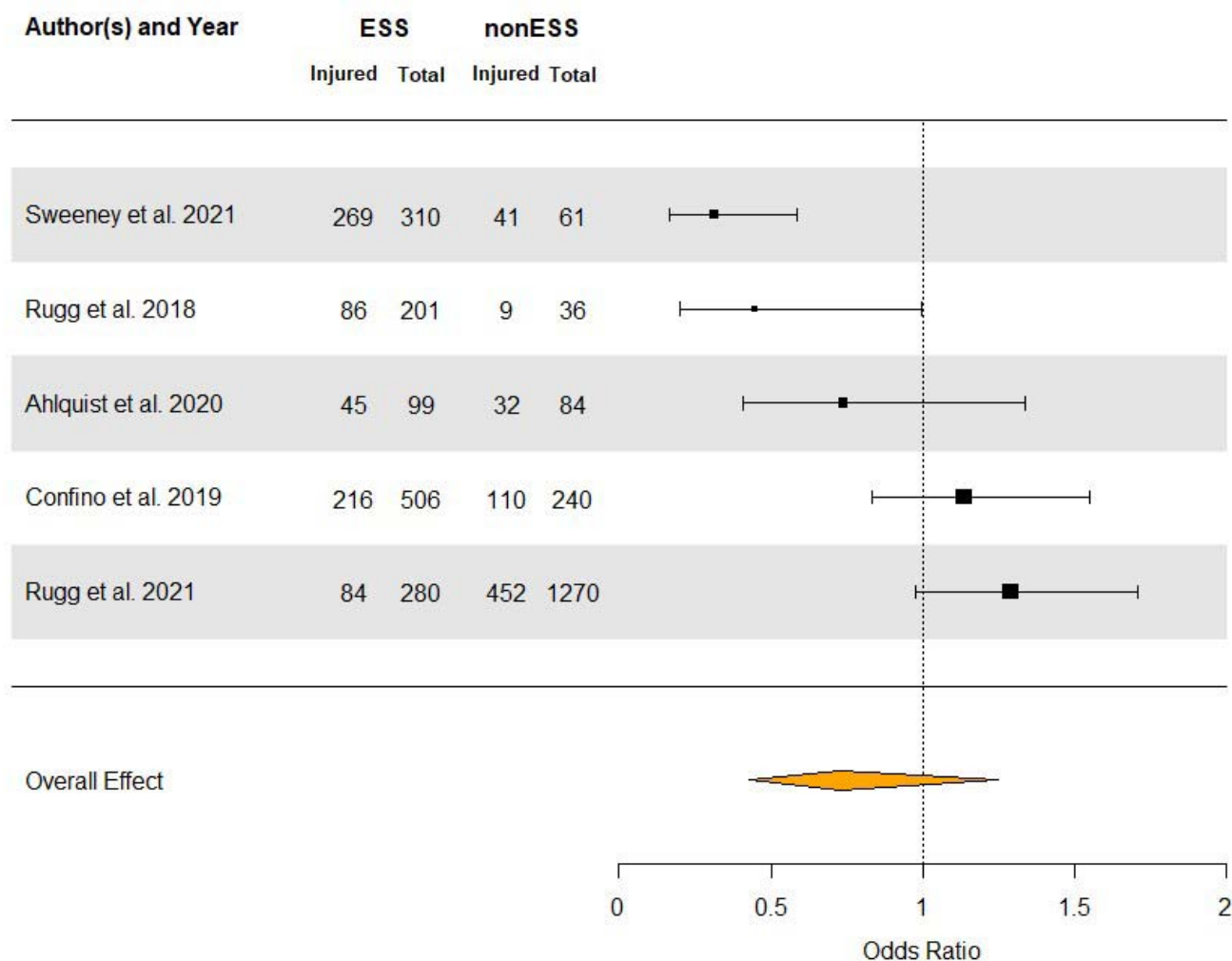
199 The average age for early sport specialization was 14.3 years old with a standard deviation of 0.5 for the
 200 four studies that reported clear ESS age cut-off[5,25,30,34]. None of the studies were clinical trials or
 201 prospective studies. Three of the included studies reported on National Collegiate American Association
 202 (NCAA) Division I sport participation[5,25,30]; one reported on professional baseball sport participation
 203 (Major League Baseball in the U.S., or MLB) [29]; and the remaining study reported on professional
 204 men’s basketball (National Basketball Association in the U.S., or NBA) sport participation[34]. No
 205 further descriptive statistics or sub-analysis was possible due to inconsistencies in reporting the athlete
 206 characteristics in the included studies.

207 *Meta-analysis*

208 A random-effects model was fitted to the five studies to estimate the overall effect of sports specialization
 209 on the odds of suffering from injury using the REML method. The estimated overall log odds ratio
 210 (logOR) is -0.314 with a standard error of 0.272 and the 95% confidence interval (CI) of -0.848, 0.22
 211 (Figure 2).

Running title: Early sport specialization impact on injury rates among elite athletes

Forest Plot of Random-Effects Meta-Analysis



212
 213 Figure 2. Forest plot of a random-effects meta-analysis of 5 studies examining the effect of early sports
 214 specialization on the odds ratio of non-contact injuries among elite athletes. The plot displays the
 215 individual study estimates and their corresponding confidence intervals, as well as the overall effect
 216 estimate. An overall effect of <1 indicates that those who specialize in their elite sport earlier had a lower
 217 odd (0.73) of being injured (as reported) compared to those who did not specialize in their sport early.
 218 However, the results are not statistically significant. ESS = total number of athletes in the early sport
 219 specialized group; ESS_injury = number of ESS athletes who reported to have at least 1 injury during
 220 elite sport participation; nonESS = total number of athletes in the non-early sport specialized group;

Running title: Early sport specialization impact on injury rates among elite athletes

221 nonESS_injury = number of nonESS athletes who reported to have at least 1 injury during elite sport
222 participation.

223 To facilitate the interpretation of the results, logOR and its confidence interval was back transformed to
224 odds ratios by taking the exponents such as following:

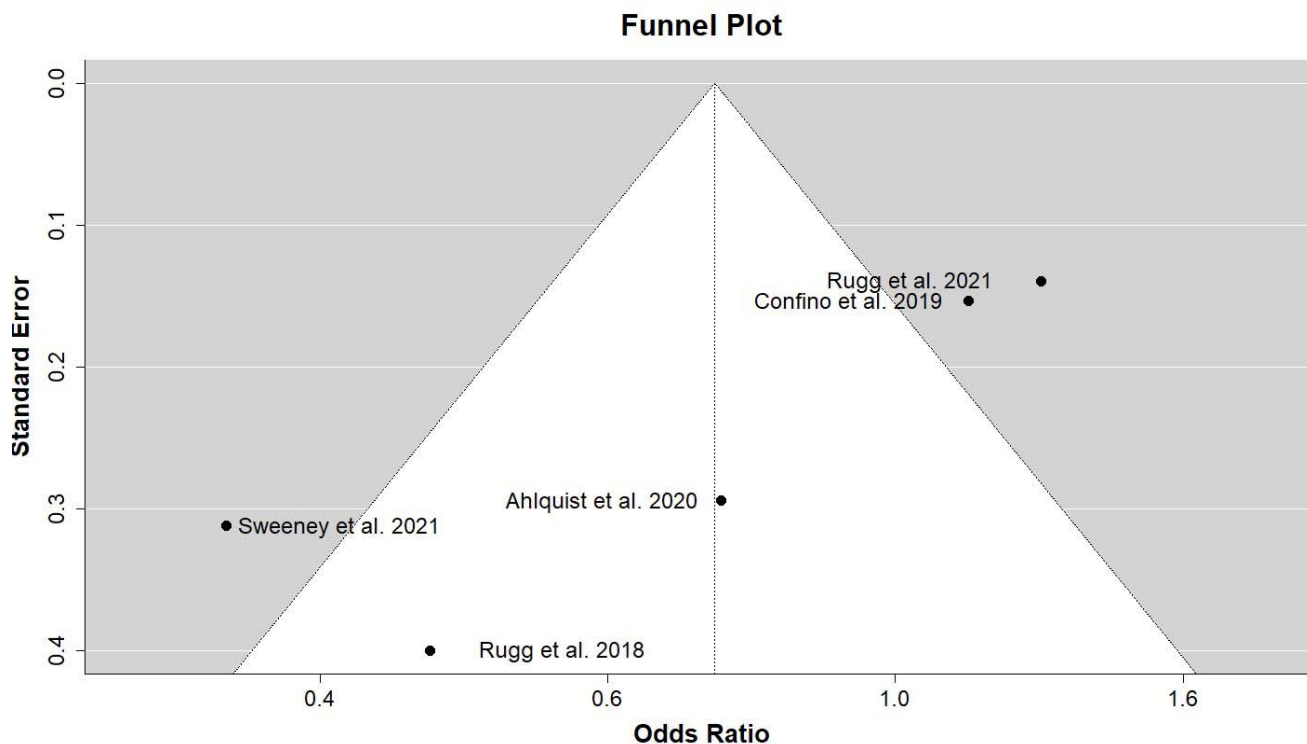
225
$$\text{Odds ratio} = \exp^{(\log OR)}$$

226
$$\text{Odds ratio 95\% CI} = \exp^{(CI \text{ lower bound})} \text{ and } \exp^{(CI \text{ upper bound})}$$

227 Odds ratio (OR) and its 95% CI associated with the findings are 0.731 and 0.428 to 1.246, respectively.
228 However, this result was not statistically significant ($p = 0.249$). The estimated amount of total
229 heterogeneity (τ^2) is 0.297. The I^2 statistic is 85.43%, suggesting that a large proportion of the total
230 variability is due to heterogeneity between studies rather than sampling variability. The test for
231 heterogeneity is significant ($Q = 21.868$, $p < 0.001$), indicating that the heterogeneity is statistically
232 significant among the studies.

233 Funnel plot (Figure 3) graphical representations of the relationship between the effect size and the
234 standard error of the effect size was executed.

Running title: Early sport specialization impact on injury rates among elite athletes



235

236 Figure 3. Funnel plot of the 5 studies included in the meta-analysis. The inverted funnel shape represents
237 the expected distribution of studies in the absence of bias. Each point represents a study, with the
238 horizontal axis showing the odds ratio and the vertical axis showing the standard error. The white area of
239 the plot represents the values within the 95% confidence interval. Points falling outside of the confidence
240 interval (represented by diagonal lines) may indicate potential publication bias or other small-study
241 effects.

242 The trim-and-fill method did not impute any missing studies, and thus did not adjust the data. Egger's test
243 of funnel plot asymmetry output was significant (z -value = -4.244, p -value < 0.001), which indicates
244 potential presence of publication bias. The leave-one-out sensitivity analysis showed that none of the
245 individual studies had a large influence on the overall results of our meta-analysis. Removing any one
246 study did not result in a statistically significant overall effect size estimate (i.e., all p -values > 0.05).
247 Influence analysis included studentized residuals, DFFITS values, Cook's distance values, and covariance
248 ratios. The results of this influence analysis showed that none of the individual studies had a large
249 influence on the overall results of our meta-analysis according to any of these measures. In summary, our
250 leave-one-out sensitivity and influence analysis suggest that our meta-analysis results are robust to the
251 influence of individual studies.

252 **Discussion**

Running title: Early sport specialization impact on injury rates among elite athletes

253 The purpose of this systematic review was to assess the long-term impact of early sport specialization on
254 injury rates during sport participation in a sample of collegiate, national, and professional athletes. Early
255 sport specializers perform their sport-specific motor pattern excessively during their developmental stage
256 and commonly suffer from overuse injuries[10]. Such pattern could lead to overactive muscle groups,
257 while multisport and late sport specializers benefit from a more developed motor control, psychological,
258 and biomechanical performance[15,37]. Thus, we hypothesized that an elite athlete who specialized in
259 their sport from early adolescence would have a higher likelihood of suffering from a non-contact injury
260 compared to those who delayed sport specialization. While the results indicated fewer injuries in the ESS
261 cohort than non-ESS (OR=0.731, p-value > 0.05), the results were not statistically significant. There was
262 a high degree of heterogeneity among studies with evidence of publication bias, which suggest that the
263 true association between ESS and injury rates may be stronger than what was observed in the included
264 studies. All the included studies were nonclinical trial and retrospective, which could explain the high
265 degree of heterogeneity and publication bias in the results.

266 The risks and benefits surrounding ESS has been a discussion topic over the past few decades especially
267 in the U.S., and the rates and risks of injuries during adolescence is amply reported. Although injury rates
268 increase following an initial injury, the rates of non-contact sport injuries in collegiate or professional
269 sports participation cannot be directly assumed from the rates of injuries in adolescents. In very recent
270 years, however, limited peer-reviewed evidence has surfaced that evaluated early sport specialization
271 patterns of athletes and their sport participation at collegiate, national, or professional competitions (i.e.,
272 *elite sport participation*), and to the best of our knowledge, this is the first systematic review with
273 quantitative analysis to assess their findings.

274 The notion among sport professionals supports delaying most sport specialization in adolescents to reduce
275 risks associated with ESS in most sports, especially in the absence of evidence that ESS is required to
276 achieve success at elite levels or improve task-related performance outcomes during adolescence
277 [8,10,14,15,17,38–40]. However, it is also necessary for an athlete to gain the sport-specific skills to excel
278 in their sports, and some athletes may require higher coach-led exposure hours than others to reach a
279 competitive status. Perhaps a compromise may be optimal, where for every main-sport coach-led
280 exposure hour, there is a predetermined unstructured and free-play agenda for those adolescent athletes.
281 This method may serve the sport-specific skill attainment required to excel at a sport, while allowing the
282 adolescent athlete to benefit from a nurturing and joyful environment.

283 *Limitation*

Running title: Early sport specialization impact on injury rates among elite athletes

284 All the included studies are retrospective, which means they were not designed to test the causal
285 relationship between ESS and injury rates. Another limitation was that male and female athletes from the
286 same sport were not reported in the included studies. Additionally, the search strategy allowed for reports
287 on sports from all countries, yet, only U.S. sports teams were represented in this study due to lack of
288 published evidence, even though some sports are widely considered more represented and competitive in
289 other countries (e.g., football/soccer). Moreover, the heterogeneity of the study designs (e.g., survey-
290 based or online databases were assessed, types and severity of injury were reported, recurrent versus first-
291 time injury reports, etc.) and terminology used in this field is a limitation of this study, and there have
292 been attempts to unify the scientific community to use a single method of reporting the findings for early
293 sport specialization[6]. The level of expertise by athletes at the time of the injury rate report (e.g.,
294 collegiate, adult professional, adult national and Olympians, etc.) could have also an impact on the
295 findings, but due to the limited number of studies and the sample size, a moderator analysis in this meta-
296 analysis was not meaningful.

297 **Conclusion**

298 Findings of this study suggest that there is no clear evidence that ESS increases the risk of injury in elite
299 sport participation. It is important to note that the findings of this study do not mean that ESS is risk-free.
300 It is still possible for athletes who specialize in a single sport to experience injuries. Our review highlights
301 the need for further prospective research to better understand the potential impact of early sport
302 specialization on the risks of non-contact injuries in elite sport participation. Future research should
303 clearly define their study design and report the data for future analysis and transparency. In addition, a
304 more equal representation of sports across different countries and genders for the same sports (e.g., men's
305 versus women's basketball), where applicable, is highly encouraged.

306 **Author contributions**

307 Bahman Adlou originated the study idea, created study design, search strategy, pooled studies, reviewed
308 them, extracted applicable data for analysis, carried out the statistical analysis procedure(s), visualized the
309 findings, and drafted the manuscript and confirmed the final version for submission. Dr. Wendi Weimar
310 helped with shaping the research question and confirmed the design, carried out the search strategy and
311 evaluated the pooled studies to aggregate potential studies to include in the systematic review and meta-
312 analysis, was involved in the final consensus on the included data for the review, extracted the data for
313 further analysis, and provided valuable recommendations for the final manuscript draft. Dr. Christopher
314 Wilburn served as the tiebreaker for the included studies where applicable, was involved in the consensus
315 on included studies, helped with data extraction where necessary, and provided valuable

Running title: Early sport specialization impact on injury rates among elite athletes

316 recommendations for the final manuscript draft. Dr. Alan Wilson helped with the research design,
317 reviewed the statistical analysis and helped in confirming the optimal analysis and the visualization of the
318 data, and provided valuable recommendations for the final manuscript draft. All authors read and
319 approved this final version of the manuscript and agree with the order of presentation of the authors.

320 **Acknowledgment**

321 Special thanks to Auburn University Librarians for providing guidance over the comprehensive search.
322 The authors declare that they have no competing interests. All data generated or analyzed during this
323 study are included in this published article. R language script used for analysis is included in the
324 submitted supplementary materials. This research did not receive any specific grant from funding
325 agencies in the public, commercial, or not-for-profit sectors.

326 **References**

- 327 1. High School Participation Survey Archive [Internet]. [cited 2023 Apr 10]. Available from:
328 <https://www.nfhs.org/sports-resource-content/high-school-participation-survey-archive>
- 329 2. Parker LT, LaBotz M. Sport specialization in young athletes. *JAAPA*. 2020;33(1):47–50.
- 330 3. Post E, Rosenthal M, Rauh M. Attitudes and Beliefs towards Sport Specialization, College
331 Scholarships, and Financial Investment among High School Baseball Parents. *SPORTS*. 2019
332 Dec;7(12).
- 333 4. Post E, Rosenthal M, Root H, Rauh M. Knowledge, Attitudes, and Beliefs of Parents of Youth
334 Basketball Players Regarding Sport Specialization and College Scholarship Availability.
335 *ORTHOPAEDIC JOURNAL OF SPORTS MEDICINE*. 2021 Aug;9(8).
- 336 5. Rugg CM, Coughlan MJ, Li JN, Hame SL, Feeley BT. Early Sport Specialization Among Former
337 National Collegiate Athletic Association Athletes: Trends, Scholarship Attainment, Injury, and
338 Attrition. *Am J Sports Med*. 2021 Mar 1;49(4):1049–58.
- 339 6. Bell D, Snedden T, Biese K, Nelson E, Watson A, Brooks A, et al. Consensus Definition of Sport
340 Specialization in Youth Athletes Using a Delphi Approach. *JOURNAL OF ATHLETIC TRAINING*.
341 2021 Nov;56(11):1239–51.
- 342 7. Mosher A, Fraser-Thomas J, Baker J. What Defines Early Specialization: A Systematic Review of
343 Literature. *Frontiers in Sports and Active Living* [Internet]. 2020 [cited 2023 Mar 10];2. Available
344 from: <https://www.frontiersin.org/articles/10.3389/fspor.2020.596229>
- 345 8. Jayanthi N, Pinkham C, Dugas L, Patrick B, Labella C. Sports specialization in young athletes:
346 evidence-based recommendations. *Sports Health*. 2013 May;5(3):251–7.
- 347 9. Myer GD, Jayanthi N, Difiori JP, Faigenbaum AD, Kiefer AW, Logerstedt D, et al. Sport
348 Specialization, Part I: Does Early Sports Specialization Increase Negative Outcomes and Reduce the
349 Opportunity for Success in Young Athletes? *Sports Health*. 2015 Sep 1;7(5):437–42.

Running title: Early sport specialization impact on injury rates among elite athletes

- 350 10. LaPrade RF, Agel J, Baker J, Brenner JS, Cordasco FA, Côté J, et al. AOSSM Early Sport
351 Specialization Consensus Statement. *Orthop J Sports Med.* 2016 Apr;4(4):2325967116644241.
- 352 11. DiFiori JP, Benjamin HJ, Brenner JS, Gregory A, Jayanthi N, Landry GL, et al. Overuse injuries and
353 burnout in youth sports: a position statement from the American Medical Society for Sports
354 Medicine. *Br J Sports Med.* 2014 Feb;48(4):287–8.
- 355 12. Stockbower K, Howell D, Seehusen C, Dahab K, Walker G. Association Between Sport
356 Specialization, Athlete Burnout, And Past Injury In High School Athletes. *MEDICINE AND
357 SCIENCE IN SPORTS AND EXERCISE.* 2020 Jul;52(17):459–459.
- 358 13. Boccia G, Cardinale M, Brustio PR. World-Class Sprinters' Careers: Early Success Does Not
359 Guarantee Success at Adult Age. *Int J Sports Physiol Perform.* 2021 Mar 1;16(3):367–74.
- 360 14. Barth M, Güllich A, Macnamara BN, Hambrick DZ. Predictors of Junior Versus Senior Elite
361 Performance are Opposite: A Systematic Review and Meta-Analysis of Participation Patterns.
362 *Sports Med.* 2022 Jun 1;52(6):1399–416.
- 363 15. Mostafavifar AM, Best TM, Myer GD. Early sport specialisation, does it lead to long-term
364 problems? *Br J Sports Med.* 2013 Nov 1;47(17):1060–1.
- 365 16. DiFiori JP, Quidici C, Gray A, Kimlin EJ, Baker R. Early Single Sport Specialization in a High-
366 Achieving US Athlete Population: Comparing National Collegiate Athletic Association Student-
367 Athletes and Undergraduate Students. *J Athl Train.* 2019 Oct;54(10):1050–4.
- 368 17. Bell DR, Post EG, Biese K, Bay C, Valovich McLeod T. Sport Specialization and Risk of Overuse
369 Injuries: A Systematic Review With Meta-analysis. *Pediatrics [Internet].* 2018 Sep 1 [cited 2023 Jan
370 22];142(3). Available from:
371 [https://publications.aap.org/pediatrics/article/142/3/e20180657/38602/Sport-Specialization-and-
372 Risk-of-Overuse-Injuries](https://publications.aap.org/pediatrics/article/142/3/e20180657/38602/Sport-Specialization-and-Risk-of-Overuse-Injuries)
- 373 18. Post E, Thein-Nissenbaum J, Stiffler M, Brooks M, Bell D. High School Sport Specialization
374 Patterns of Current Division I Athletes. *SPORTS HEALTH-A MULTIDISCIPLINARY
375 APPROACH.* 2017 Mar;9(2):148–53.
- 376 19. Page MJ, McKenzie JE, Bossuyt PM, Boutron I, Hoffmann TC, Mulrow CD, et al. The PRISMA
377 2020 statement: an updated guideline for reporting systematic reviews. *BMJ.* 2021 Mar 29;372:n71.
- 378 20. Jayanthi NA, LaBella CR, Fischer D, Pasulka J, Dugas LR. Sports-Specialized Intensive Training
379 and the Risk of Injury in Young Athletes: A Clinical Case-Control Study. *Am J Sports Med.* 2015
380 Apr 1;43(4):794–801.
- 381 21. Pick JL, Nakagawa S, Noble DWA. Reproducible, flexible and high-throughput data extraction
382 from primary literature: The metaDigitise R package [Internet]. *bioRxiv*; 2018 [cited 2023 Apr 16].
383 p. 247775. Available from: <https://www.biorxiv.org/content/10.1101/247775v3>
- 384 22. Measuring inconsistency in meta-analyses | *The BMJ [Internet].* [cited 2023 Apr 12]. Available
385 from: <https://www.bmj.com/content/327/7414/557>
- 386 23. Viechtbauer W. Conducting Meta-Analyses in R with the metafor Package. *Journal of Statistical
387 Software.* 2010 Aug 5;36:1–48.

Running title: Early sport specialization impact on injury rates among elite athletes

- 388 24. Duval S. The Trim and Fill Method. In: Publication Bias in Meta-Analysis [Internet]. John Wiley &
389 Sons, Ltd; 2005 [cited 2023 Apr 26]. p. 127–44. Available from:
390 <https://onlinelibrary.wiley.com/doi/abs/10.1002/0470870168.ch8>
- 391 25. Ahlquist S, Cash BM, Hame SL. Associations of Early Sport Specialization and High Training
392 Volume With Injury Rates in National Collegiate Athletic Association Division I Athletes. *Orthop J*
393 *Sports Med*. 2020 Mar 12;8(3):2325967120906825.
- 394 26. Buckley PS, Bishop M, Kane P, Ciccotti MC, Selverian S, Exume D, et al. Single sport
395 specialization in youth sports: A survey of 3,090 high school, collegiate, and professional athletes.
396 *Orthop J Sports Med* [Internet]. 2017;5(7). Available from:
397 <https://www.embase.com/search/results?subaction=viewrecord&id=L623188505&from=export>
- 398 27. Sheppard M, Nicknair J, Goetschius J. Early Sport Specialization and Subjective Hip and Groin
399 Dysfunction in Collegiate Ice Hockey Athletes. *Journal of Athletic Training*. 2020 Mar 1;55(3):232–
400 7.
- 401 28. Wilhelm A, Choi C, Deitch J. Early Sport Specialization: Effectiveness and Risk of Injury in
402 Professional Baseball Players. *Orthopaedic Journal of Sports Medicine*. 2017 Sep
403 1;5(9):2325967117728922.
- 404 29. Confino J, Irvine JN, O’Connor M, Ahmad CS, Lynch TS. Early Sports Specialization Is Associated
405 With Upper Extremity Injuries in Throwers and Fewer Games Played in Major League Baseball.
406 *Orthopaedic Journal of Sports Medicine*. 2019 Jul 1;7(7):2325967119861101.
- 407 30. Sweeney E, Howell DR, Seehusen CN, Tilley D, Casey E. Health outcomes among former female
408 collegiate gymnasts: the influence of sport specialization, concussion, and disordered eating. *The*
409 *Physician and Sportsmedicine*. 2021 Oct 2;49(4):438–44.
- 410 31. Biese KM, Winans M, Fenton AN, Hernandez M, Schaefer DA, Bell DR. High School Sport
411 Specialization and Injury in Collegiate Club-Sport Athletes. *J Athl Train*. 2021 Dec;56(12):1271–7.
- 412 32. Xiao M, Lemos JL, Hwang CE, Sherman SL, Safran MR, Abrams GD. High Specialization among
413 Female Youth Soccer Players Is Associated with an Increased Likelihood of Serious Injury.
414 *Medicine & Science in Sports & Exercise*. 2021 Oct;53(10):2086.
- 415 33. Ross KA, Fried JW, Bloom DA, Gonzalez-Lomas G. The effect of specialization and level of
416 competition on injury in elite male ice hockey players. *The Physician and Sportsmedicine*. 2022 Jul
417 4;50(4):295–300.
- 418 34. Rugg C, Kadoor A, Feeley BT, Pandya NK. The Effects of Playing Multiple High School Sports on
419 National Basketball Association Players’ Propensity for Injury and Athletic Performance. *Am J*
420 *Sports Med*. 2018 Feb 1;46(2):402–8.
- 421 35. Steinl GK, Padaki AS, Irvine JN, Popkin CA, Ahmad CS, Lynch TS. The prevalence of high school
422 multi-sport participation in elite national football league athletes. *The Physician and*
423 *Sportsmedicine*. 2021 Oct 2;49(4):476–9.
- 424 36. Buckley P, Ciccotti M, Bishop M, Kane P, Selverian S, Exume D, et al. Youth Single-Sport
425 Specialization in Professional Baseball Players. *ORTHOPAEDIC JOURNAL OF SPORTS*
426 *MEDICINE*. 2020 Mar;8(3).

Running title: Early sport specialization impact on injury rates among elite athletes

- 427 37. Kliethermes S, Marshall S, LaBella C, Watson A, Brenner J, Nagle K, et al. Defining a research
428 agenda for youth sport specialisation in the USA: the AMSSM Youth Early Sport Specialization
429 Summit. BRITISH JOURNAL OF SPORTS MEDICINE. 2021 Feb;55(3):135–43.
- 430 38. DiFiori J, Brenner J, Comstock D, Cote J, Gullich A, Hainline B, et al. Debunking early single sport
431 specialisation and reshaping the youth sport experience: an NBA perspective. BRITISH JOURNAL
432 OF SPORTS MEDICINE. 2017 Feb;51(3):142-U88.
- 433 39. Kliethermes SA, Nagle K, Côté J, Malina RM, Faigenbaum A, Watson A, et al. Impact of youth
434 sports specialisation on career and task-specific athletic performance: a systematic review following
435 the American Medical Society for Sports Medicine (AMSSM) Collaborative Research Network’s
436 2019 Youth Early Sport Specialisation Summit. Br J Sports Med. 2020 Feb 1;54(4):221–30.
- 437 40. Burwell M, DiSanti J, McLeod T. Early Sport Specialization in College Athletes and the Impact on
438 Health-Related Quality of Life: A Critically Appraised Topic. JOURNAL OF SPORT
439 REHABILITATION. 2022 Jul;31(5):645–50.
- 440