

1

TITLE PAGE

2 **Title**

3 Clustering of shoulder movement patterns using K-means algorithm based on the shoulder range of motion

4 **Running head**

5 Clustering of shoulder movement patterns

6 **Name of Author (Academic degree)**

7 Jun-hee Kim (PhD, PT)

8 **Affiliation**

9 ^a1, Yeonsedae-gil, Maeji-ri, Heungeop-myeon, Wonju-si, Gangwon-do, 26493, Laboratory of KEMA AI
10 Research (KAIR), Department of Physical Therapy, College of Software and Digital Healthcare Convergence,
11 Yonsei University, Wonju, South Korea. □

12 **Corresponding Author**

13 Jun-hee Kim, PhD, PT

14 move@yonsei.ac.kr / +82-10-9636-3638

15

16 This study used data samples obtained from the 5th anthropometric survey (2003-2004) of the Size Korea
17 (Korean anthropometric survey) project of the Korean Agency for Technology and Standards.

18 This study was approved by the Public Institutional Review Board Designated by Ministry of Health and
19 Welfare (approval number: P01-202307-01-014)

20

21

22

Abstract

23 **Context:** Categorization in medicine is used to enhance understanding of a disease or syndrome and
24 apply it to treatment and is based on human clinical experience or theory. Cluster analysis using the
25 K-means algorithm is an unsupervised machine learning method that classifies clusters based on
26 numerical data. The purpose of this study was to classify subjects into clusters using K-means
27 algorithm based on shoulder range of motion (ROM) and identify the characteristics of the clusters.

28 **Design:** Cross-sectional study

29 **Methods:** 551 data samples measured in the 5th Size Korea Anthropometric Survey (2003~2004)
30 were used. Clustering was performed using the K-means algorithm, and the appropriate number of
31 clusters was determined using the elbow curve and silhouette score. The characteristics of the clusters
32 were analyzed by comparing the average values of shoulder ROM in the clusters.

33 **Results:** The appropriate number of classifications of clusters according to the shoulder ROM was 8.
34 Clusters 1 and 5 had the lowest flexion range, and clusters 7 and 8 had low internal rotation and
35 shoulder horizontal adduction ranges. Clusters 2 and 6 exhibited the highest flexion and overall high
36 flexibility. Clusters 3 and 4 showed moderate flexion ranges but low horizontal adduction ranges.
37 Shoulder movement patterns were classified into a total of 8 clusters according to the shoulder ROM.

38 **Conclusion:** Based on this clustering system, it was possible to identify the pattern of shoulder
39 movement in ordinary people, and it could be used as basic data to identify and treat diseases or
40 syndromes according to the pattern.

41 **Keywords:** clustering, machine learning, K-means, movement pattern, shoulder range of motion

42

43

44 **Introduction**

45 Categorization is a broad concept that classifies or groups objects, concepts, social groups, etc.
46 according to common characteristics.¹ In other words, categorization means the act of distinguishing
47 between things with different properties and collecting things with the same properties.¹
48 Categorization has a deep relationship with human cognitive ability, and through categorization,
49 humans have been equipped with advanced thinking abilities such as observation, comparison,
50 understanding, reasoning, judgment, and application.^{1,2}

51 Categorization is one of the important concepts in the field of medicine. Pathology is a
52 representative academic field that uses the concept of categorization the most in medicine.³ Pathology
53 is a discipline that systematically analyzes and organizes the changes that occur in the human body
54 according to diseases.³ As numerous diseases have been classified and analyzed systematically, human
55 health has improved steadily over a long period of time.^{4,5} Depending on the categorization of the
56 disease, it has been used to find the cause of the disease, select the treatment according to the disease,
57 and predict the patient's prognosis.⁵⁻⁷

58 In addition to categorization of diseases, patients are categorized into different syndromes to
59 classify people who experience a set of symptoms and signs into a specific set.⁸ Regarding
60 musculoskeletal disorders, various syndromes are classified according to their symptoms and signs,
61 and treatments are systematically used to recover these classified syndromes.⁸⁻¹¹ Janda proposed a
62 "crossed syndrome" of muscle imbalance in 1979 based on her clinical observations and studies, and
63 theorized that this physical syndrome due to muscle imbalance was predictable and related to the
64 entire motor system.¹² According to his theory, upper crossed syndrome was defined as abnormal
65 alignment and pain due to overactivity of the upper trapezius, levator scapulae, sternocleidomastoid,
66 and pectoralis major muscles, and inhibition of the deep cervical flexor, lower trapezius, and serratus
67 anterior.¹² Since the imbalance of these muscles leads to motor dysfunction, it is said that resolving
68 this imbalance improves shoulder function and relieves pain.¹² Sahrman (2002) defined movement
69 impairment syndrome as a condition in which pain or functional impairment occurs due to imbalance

70 of muscles caused by incorrect posture or repeated movements.¹³ Based on her clinical experiences
71 and studies, shoulder movement impairment syndromes can be classified into 8 types according to the
72 alignment of the shoulder joints or movement patterns.¹³ It is said that pain, abnormalities and
73 functional limitations of the shoulder joints are restored by restoring the imbalance of muscles or
74 correcting the faulty movements of each syndrome with precise movements.¹³

75 Clustering analysis is an old data analysis technique first used in psychology by Driver and Kroeber
76 in 1932, but has been rapidly systematized in recent years with advances in artificial intelligence and
77 machine learning.¹⁴ Clustering is a similar concept to categorization, but clustering analysis is a way
78 of classifying objects into clusters by unsupervised machine learning algorithms.^{14,15} It is an analysis
79 technique that identifies differences between clusters by measuring the similarity of each piece of data
80 and categorizing them into multiple clusters.^{14,15} Clustering enables a process of grouping objects into
81 clusters based on characteristics or similarities inherent in objects only with quantified data without
82 subjective human judgment or bias.^{14,15} The K-means algorithm is one of the unsupervised learning
83 algorithms used for clustering and is a method of grouping data into a predefined number of
84 clusters.¹⁶⁻¹⁹ Since the K-means algorithm is a distance-based algorithm, it is suitable for continuous
85 data and can be applied to large-scale datasets because it is relatively simple, fast, and scalable.^{16,17,20}

86 So far, in relation to physical health, subjects have been categorized according to diseases or
87 syndromes based on characteristics such as movement patterns or muscle imbalances. In other words,
88 the movement patterns were compared or analyzed by classifying only those with or without physical
89 problems. Also, these categorizations have been theorized based on human observations and studies.
90 However, the categorization of human movement patterns in which diseases or syndromes are not
91 considered has not yet been studied. In addition, there has been no study that has categorized
92 movement patterns through a clustering technique, one of unsupervised machine learning, based on
93 physical data related to movement of normal adults. Therefore, the purpose of this study was to
94 classify shoulder movement patterns using K-means clustering techniques based on the shoulder
95 range of motion (ROM).

96

97 **Materials and methods**

98 1. Data Source

99 This study used data samples obtained from the 5th anthropometric survey (2003-2004) of the xxxx
100 xxxxxx (xxxxxx anthropometric survey) project of the xxxxxx Agency for Technology and Standards.
101 Among a total of 551 data samples, 10 data samples with missing shoulder ROM were excluded, and
102 541 samples were finally selected. (Figure 1). The data samples included age and gender information,
103 excluding personally identifiable information, and included shoulder flexion, extension, horizontal
104 adduction, horizontal abduction, internal rotation, and external rotation ROM (Table 1). This study
105 was approved by the Public Institutional Review Board Designated by Ministry of Health and Welfare
106 (approval number: xxx-xxxxxx-xx-xxx)

107 (Figure 1 is located here)

108 (Table 1 is located here)

109

110 2. Data Preprocessing

111 Interquartile range (IQR) method was used to detect and convert outliers. Outliers outside the 1.5 *
112 IQR point were detected at the 25% (Q1) and 75% (Q3) points in the data distribution, and the outlier
113 data were converted to fit the 1.5 IQR point.²¹ Shoulder ROM data, which are continuous variables,
114 were standardized using the StandardScaler function.²²

115

116 3. Machine learning algorithms

117 The shoulder movement pattern clustering model was developed as a clustering technique using the
118 K-means algorithm, an unsupervised machine learning technique. Since the K-means clustering
119 technique requires pre-determination of the number of categorizations before model construction, the
120 number of categorizations was set to be between 2 and 12.

121

122 4. Model evaluation

123 The elbow curve and silhouette score were used to select the number of shoulder movement
124 patterns and evaluate the quality of the model. An elbow curve graphs the change in sum of squared
125 within-cluster variation (SSW) according to the number of clusters (k). As the number of clusters
126 increases, the SSW value decreases, and then the appropriate number of clusters is determined
127 through an “elbow” point where the slope of the decrease becomes gentle.²³ In addition, the silhouette
128 score is calculated considering the similarity within the cluster of each data point and the distance
129 between other clusters. The silhouette score ranges from -1 to 1, and the closer to 1, the better the
130 classification of clusters, and the closer to 0, the less certain the clustering result.²⁴

131

132 **Results**

133 1. The number of clusters

134 In the shoulder movement pattern clustering model using the K-means algorithm, an elbow point
135 did not appear according to the change in the number of clusters (Figure 2). In other words, the
136 decreasing slope of SSW according to the cluster increase was relatively constant, and it was not
137 possible to select the number of clusters using the elbow curve. However, the silhouette score was
138 highest when the number of clusters was 8.

139 (Figure 2 is located here)

140

141 2. Clusters of shoulder movement pattern

142 Table 2 and Figure 3 show the 8 shoulder movement pattern clusters identified by the k-means
143 algorithm clustering, their gender and age, and the ranges of motion for shoulder joint. Subjects with
144 the movement pattern of cluster 1 had a relatively low range of external rotation and flexion compared
145 to other clusters, but a high range of internal rotation. Subjects with the movement pattern of cluster 2
146 had the highest flexion range and relatively low horizontal abduction range compared to other clusters.
147 Subjects with movement pattern of cluster 3 had higher rotation and horizontal abduction ranges than
148 other clusters, but the rest ranges were not particularly high or low. Subjects with movement patterns
149 of cluster 4 had a higher extension range than other clusters, but the rest ranges were not particularly
150 high or low. Subjects with movement patterns of cluster 5 had higher ranges of extension and external
151 rotation, but lower ranges of flexion and horizontal abduction than other clusters. Subjects with the
152 movement pattern of cluster 6 showed the second highest flexion ROM, and horizontal adduction and
153 abduction showed the highest ROM. Subjects with the movement pattern of cluster 7 showed the
154 second lowest ROM for internal rotation and showed lower ranges of extension, horizontal adduction,
155 and horizontal abduction than the other clusters. Subjects with movement pattern of cluster 8 showed
156 the lowest internal rotation range compared to the other clusters.

157 (Table 2 is located here)

158 (Figure 3 is located here)

159

160 Discussion

161 The purpose of this study is to perform clustering according to shoulder ROM with the K-means
162 algorithm, an unsupervised machine learning data clustering algorithm that operates without human
163 prior knowledge or prejudice. As a result of classification using the K-means algorithm, subjects
164 formed a total of 8 clusters according to shoulder ROM, and each cluster showed different shoulder
165 movement patterns.

166 Biomechanics is a study that analyzes the scientific principles related to the movement of the
167 human body, and investigates and studies forces, alignments, and movements acting on the human
168 body. Based on biomechanics, it is emphasized that incorrect postures or movements occurring in the
169 human body can cause musculoskeletal disorders or syndromes and improving them can be a
170 fundamental treatment for musculoskeletal related problems. Representatively, Sahrman (2002)
171 classified and defined eight types of syndromes based on the alignment of the scapulae or humerus
172 that make up the shoulder girdle or the movement of joints such as the scapulothoracic or
173 glenohumeral joints based on biomechanics.¹³ According to each shoulder movement impairment
174 syndrome, abnormal shoulder movements were observed along with shortening of the length of
175 specific muscles or weakness of specific muscles.¹³ Similar to the results of this study, the clustering
176 analysis according to the shoulder ROM revealed 8 types of shoulder movement pattern clusters.

177 Sahrman (2002) suggested that the shoulder flexion motion could be restricted in common in the 8
178 types of shoulder movement impairment syndrome.¹³ It has been reported that the flexion ROM is
179 significantly reduced due to symptoms such as shoulder impingement accompanied by pain,
180 insufficient scapular movement, or abnormal scapular movement.¹³ In addition to scapular movements,
181 excessive abnormal gliding motion occurring in the glenohumeral joint can also affect the shoulder
182 flexion ROM.¹³ In this study, clusters 1 and 5 are classified as having limited shoulder flexion angle.
183 However, the difference between cluster 1 and cluster 5 was only the difference in the range of
184 external rotation of the shoulder. Cluster 1 had a lower external rotation range compared to cluster 5.
185 The pattern of limited shoulder flexion and external rotation suggests that cluster 1 probably exhibits a

186 movement pattern similar to shoulder medial rotation syndrome in movement impairment syndrome.¹³
187 Camp (2017) found that reduced shoulder flexion and external rotation ROM increased the risk of
188 elbow injury by 9% and 7%, respectively, in the study conducted on 132 adult pitchers.²⁵ Based on the
189 above study results, Cluster 1 may be at risk of elbow injury due to limitations in the ROM for
190 shoulder flexion and external rotation. According to previous studies on shoulder impingement
191 syndrome, also referred to as subacromial pain syndrome, and internal rotation ROM, it was reported
192 that patients with this syndrome had a significantly reduced internal rotation ROM.²⁶⁻²⁸ Cluster 8
193 showed the lowest internal rotation ROM, although it did not seem to show much difference from the
194 other clusters in other shoulder ranges of motion. Based on above study results, subjects who formed
195 cluster 8 are likely suffering from or related to subacromial pain syndrome. In addition, it has been
196 reported that a decrease in shoulder internal rotation angle is related to a decrease in horizontal
197 adduction.²⁹ This reduction in internal rotation and horizontal adduction can lead to abnormal
198 humerus motion and reduced subacromial space, leading to subacromial pain syndrome as mentioned
199 above.^{29,30} Cluster 7 exhibited the second lowest internal rotation as well as the lowest horizontal
200 adduction range. Therefore, compared to cluster 8, the movement pattern of cluster 7 was classified as
201 a different cluster, but it can be assumed that there is a condition or risk of subacromial pain syndrome
202 as well.

203 Clusters 2 and 6 showed the highest flexion range. However, cluster 6 showed a high range of both
204 horizontal adduction and abduction compared to other clusters, while cluster 2 showed a medium
205 range. In terms of the range of rotations, both clusters 2 and 6 showed intermediate ranges.
206 Nonetheless, according to the above study, these two clusters would be unrestricted and flexible with
207 no problems in their ROM and would have a much lower risk of shoulder musculoskeletal disorders
208 than the other clusters. Clusters 3 and 4 have lower ranges of flexion, which is clinically important
209 motion, than clusters 2 and 6, but still have a greater range than the other clusters. Also, the rotation
210 ranges were high to medium. Nevertheless, since the range of shoulder horizontal adduction was the
211 second and third lowest, respectively, there is a possibility that the risk of subacromial pain syndrome
212 is higher than that of the clusters 2 and 6.

213 There are several limitations in this study. First, information such as disease or syndrome was not
214 labeled in the data used for machine learning modeling in this study. Nevertheless, the original
215 purpose of data collection used in this paper was to investigate standard human data, and the average
216 age of the subjects was in their 20s, and the frequency of shoulder-related diseases would have been
217 relatively low. Therefore, there would be no major errors in the clustering model through this study.
218 Second, in this study, clusters were classified by differences in shoulder ROM values using the K-
219 means algorithm, but these differences were not performed by a parametric test assuming a normal
220 distribution. Therefore, it could not be shown that the difference in shoulder movement by cluster
221 mentioned in this study was a significant difference by parametric test. Third, although movement
222 patterns were classified into 8 clusters based on shoulder ROM data, it may not be clear to make a
223 clinical interpretation of each cluster only by classifying shoulder ROM. In the future, further studies
224 will be needed to determine whether clusters with these movement patterns have a causal relationship
225 or association with specific shoulder diseases or syndromes.

226

227 **Conclusion**

228 In this study, clustering analysis was performed using the K-means algorithm based on shoulder
229 ROM data of flexion, extension, internal rotation, external rotation, horizontal adduction, and
230 horizontal abduction. Shoulder movement patterns were classified into a total of 8 clusters according
231 to the shoulder ROM. Clusters 1 and 5 showed a limited range of flexion common in movement
232 impairment syndrome, as well as cluster 1 showed a limited range of external rotation. Clusters 7 and
233 8 were classified as having a reduced range of internal rotation, which is closely related to
234 subacromial pain syndrome. In addition, cluster 7 showed the lowest range of horizontal adduction,
235 which is another cause of subacromial pain syndrome. Clusters 2 and 6 showed high flexibility in the
236 flexion angle, and the rest of the ROM also showed a medium to high level. Clusters 3 and 4 showed
237 moderate range of flexion, but the range of shoulder horizontal adduction, which was associated with
238 the risk of subacromial pain syndrome, was the second and third lowest, respectively.

239 **Acknowledgments**

240 This research did not receive any specific grant from funding agencies in the public, commercial, or
241 not-for-profit sectors. The author's responsibilities were as follows: xxx designed the study and wrote
242 the manuscript; xxx analyzed the data; xxx edited the manuscript; xxx had primary responsibility for
243 the final content of the manuscript; All authors read and approved the final manuscript.

244

245 **References**

- 246 1. Cohen H, Lefebvre C. *Handbook of Categorization in Cognitive Science*. Elsevier; 2005.
- 247 2. Gelman SA, Meyer M. Child categorization. *Wiley Interdiscip Rev Cogn Sci*. 2011;2(1):95-
248 105.
- 249 3. Underwood JCE, Cross SS. *General and Systematic Pathology E-Book*. Elsevier Health
250 Sciences; 2009.
- 251 4. Harrison JE, Weber S, Jakob R, Chute CG. ICD-11: an international classification of diseases
252 for the twenty-first century. *BMC Med Inform Decis Mak*. 2021;21(6):1-10.
- 253 5. Anderson RN, Rosenberg HM. Disease classification: measuring the effect of the Tenth
254 Revision of the International Classification of Diseases on cause of death data in the United
255 States. *Stat Med*. 2003;22(9):1551-1570.
- 256 6. Dicker RC, Coronado F, Koo D, Parrish RG. Principles of epidemiology in public health
257 practice; an introduction to applied epidemiology and biostatistics. 2006.
- 258 7. Gopalakrishnan N, Nadhamuni K, Karthikeyan T. Categorization of pathology causing low
259 back pain using magnetic resonance imaging (MRI). *J Clin Diagnostic Res JCDR*.
260 2015;9(1):TC17.
- 261 8. Magalini SI, Magalini SC, Francisci G de. Dictionary of medical syndromes. In: *Dictionary of*
262 *Medical Syndromes*. JB Lippincott; 1990.
- 263 9. Guccione AA. Physical therapy for musculoskeletal syndromes. *Rheum Dis Clin*.
264 1996;22(3):551-562.
- 265 10. Mourão AF, Blyth FM, Branco JC. Generalised musculoskeletal pain syndromes. *Best Pract*
266 *Res Clin Rheumatol*. 2010;24(6):829-840.
- 267 11. Malleson PN, Connell H, Bennett SM, Eccleston C. Chronic musculoskeletal and other
268 idiopathic pain syndromes. *Arch Dis Child*. 2001;84(3):189-192.

- 269 12. Frank C, Page P, Lardner R. *Assessment and Treatment of Muscle Imbalance: The Janda*
270 *Approach*. Human Kinetics; 2009.
- 271 13. Sahrmann S. *Diagnosis and Treatment of Movement Impairment Syndromes*. Elsevier Health
272 Sciences; 2002.
- 273 14. Amelio A, Tagarelli A. Data mining: clustering. *Encycl Bioinforma Comput Biol*. 2018:437-
274 448.
- 275 15. Madhulatha TS. An overview on clustering methods. *arXiv Prepr arXiv12051117*. 2012.
- 276 16. Wu J. *Advances in K-Means Clustering: A Data Mining Thinking*. Springer Science &
277 Business Media; 2012.
- 278 17. Bock H-H. Clustering methods: a history of k-means algorithms. *Sel Contrib data Anal Classif*.
279 2007:161-172.
- 280 18. Sinaga KP, Yang M-S. Unsupervised K-means clustering algorithm. *IEEE access*.
281 2020;8:80716-80727.
- 282 19. Ahmed M, Seraj R, Islam SMS. The k-means algorithm: A comprehensive survey and
283 performance evaluation. *Electronics*. 2020;9(8):1295.
- 284 20. Pham DT, Dimov SS, Nguyen CD. Selection of K in K-means clustering. *Proc Inst Mech Eng*
285 *Part C J Mech Eng Sci*. 2005;219(1):103-119.
- 286 21. Schwertman NC, Owens MA, Adnan R. A simple more general boxplot method for identifying
287 outliers. *Comput Stat Data Anal*. 2004;47(1):165-174.
- 288 22. Ferreira P, Le DC, Zincir-Heywood N. Exploring feature normalization and temporal
289 information for machine learning based insider threat detection. In: *2019 15th International*
290 *Conference on Network and Service Management (CNSM)*. IEEE; 2019:1-7.
- 291 23. Syakur MA, Khotimah BK, Rochman EMS, Satoto BD. Integration k-means clustering
292 method and elbow method for identification of the best customer profile cluster. In: *IOP*

- 293 *Conference Series: Materials Science and Engineering*. Vol 336. IOP Publishing; 2018:12017.
- 294 24. Shahapure KR, Nicholas C. Cluster quality analysis using silhouette score. In: *2020 IEEE 7th*
295 *International Conference on Data Science and Advanced Analytics (DSAA)*. IEEE; 2020:747-
296 748.
- 297 25. Camp CL, Zajac JM, Pearson DB, et al. Decreased shoulder external rotation and flexion are
298 greater predictors of injury than internal rotation deficits: analysis of 132 pitcher-seasons in
299 professional baseball. *Arthrosc J Arthrosc Relat Surg*. 2017;33(9):1629-1636.
- 300 26. Kim J-H, Yi C-H, Jeon H-S, Choi W-CJ, Weon J-H, Kwon O-Y. Comparison of shoulder
301 functions between assembly workers with and without subacromial pain syndrome. *Work*.
302 2022;(Preprint):1-11.
- 303 27. Tyler TF, Nicholas SJ, Roy T, Gleim GW. Quantification of posterior capsule tightness and
304 motion loss in patients with shoulder impingement. *Am J Sports Med*. 2000;28(5):668-673.
305 doi:<https://doi.org/10.1177/03635465000280050801>
- 306 28. Saccol MF, Almeida GPL, de Souza VL. Anatomical glenohumeral internal rotation deficit
307 and symmetric rotational strength in male and female young beach volleyball players. *J*
308 *Electromyogr Kinesiol*. 2016;29:121-125. doi:<https://doi.org/10.1016/j.jelekin.2015.08.003>
- 309 29. McClure P, Balaicuis J, Heiland D, Broersma ME, Thorndike CK, Wood A. A randomized
310 controlled comparison of stretching procedures for posterior shoulder tightness. *J Orthop*
311 *Sports Phys Ther*. 2007;37(3):108-114. doi:10.2519/jospt.2007.2337
- 312 30. Joung HN, Yi C-H, Jeon HS, Hwang UJ, Kwon OY. Effects of 4-week self-cross body
313 stretching with scapular stabilization on shoulder motions and horizontal adductor strength in
314 subjects with limited shoulder horizontal adduction: cross body stretching with stabilization. *J*
315 *Sports Med Phys Fitness*. 2019;59(3):456-461. doi:[https://doi.org/10.23736/s0022-](https://doi.org/10.23736/s0022-4707.18.08454-2)
316 [4707.18.08454-2](https://doi.org/10.23736/s0022-4707.18.08454-2)
- 317

318 **List of tables**

319 Table 1. Variables description

320 Table 2. Shoulder movement pattern clusters and ranges of motion

321

322 **List of figures**

323 Figure 1. Flowchart of the study

324 Figure 2. Elbow curve and silhouette score

325 Figure 3. Shoulder movement pattern clusters and ranges of motion

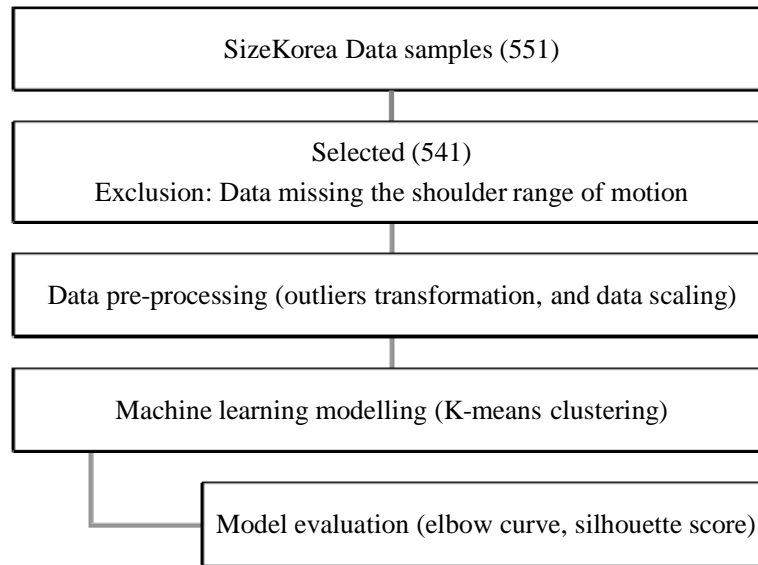


Figure 1. Flowchart of the study

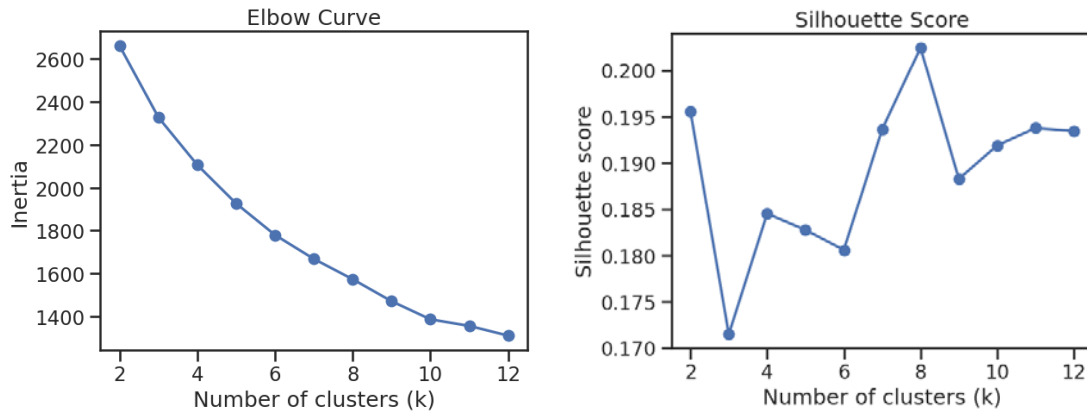


Figure 2. Elbow curve and silhouette score

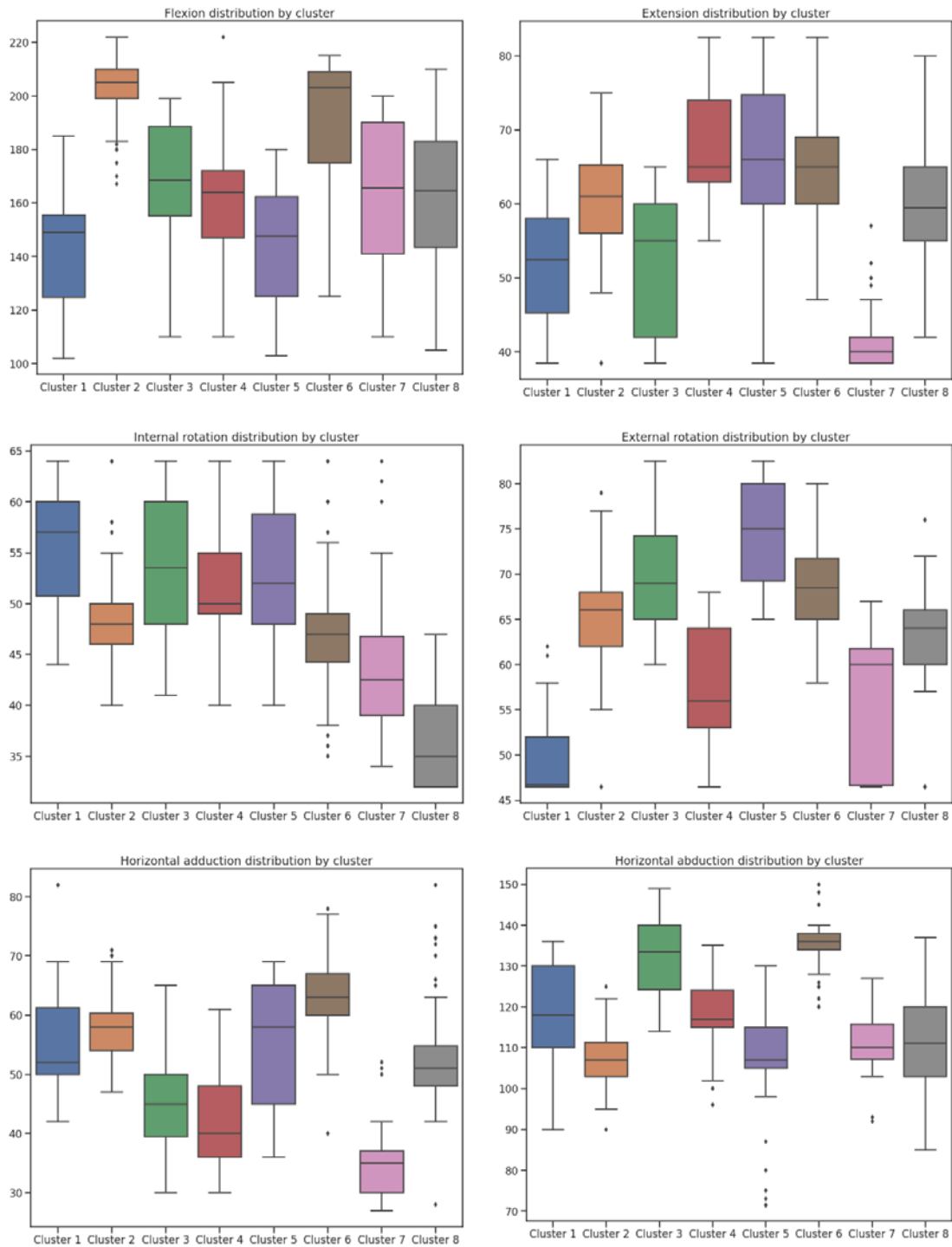


Figure 3. Shoulder movement pattern clusters and ranges of motion

Table 1. Variables description

Variables	Description	Value
age	Age	24.34 ± 5.53
sex	Gender	Male: 325, Female: 216
flex	Shoulder flexion	176.37 ± 29.23
ext	Shoulder extension	60.49 ± 13.12
hor_add	Shoulder horizontal adduction	53.72 ± 11.36
hor_abd	Shoulder horizontal abduction	117.18 ± 14.32
int_rot	Shoulder internal rotation	48.31 ± 9.40
ext_rot	Shoulder external rotation	64.32 ± 10.48

Table 2. Shoulder movement pattern clusters and ranges of motion

Clusters	Gender (M/F)	Age	Flexion	Extension	Internal rotation	External rotation	Horizontal adduction	Horizontal abduction
Cluster 1	15/17	22.94 ± 5.34	143.56 ± 21.22	51.69 ± 8.83	55.16 ± 6.19	49.56 ± 4.59	56.38 ± 9.79	118.59 ± 13.68
Cluster 2	97/43	24.37 ± 4.91	202.81 ± 10.37	61.37 ± 7.54	48.17 ± 4.17	65.75 ± 4.90	58.06 ± 5.37	107.99 ± 6.77
Cluster 3	19/29	24.32 ± 6.38	170.50 ± 24.32	51.82 ± 8.73	53.58 ± 7.24	70.15 ± 6.42	45.88 ± 8.62	131.85 ± 10.58
Cluster 4	36/29	25.02 ± 6.38	163.22 ± 25.02	68.15 ± 7.52	51.40 ± 4.94	57.08 ± 6.90	42.15 ± 7.67	118.37 ± 9.20
Cluster 5	17/33	24.38 ± 5.33	143.46 ± 24.38	66.49 ± 12.19	52.74 ± 6.51	74.49 ± 5.79	56.00 ± 9.39	107.04 ± 14.26
Cluster 6	65/29	24.01 ± 5.79	191.90 ± 24.01	66.04 ± 8.96	47.23 ± 5.64	68.73 ± 4.78	64.06 ± 7.01	134.85 ± 5.55
Cluster 7	23/11	24.81 ± 5.34	163.82 ± 24.81	42.16 ± 5.22	44.38 ± 7.63	56.49 ± 7.27	34.88 ± 6.55	111.50 ± 8.05
Cluster 8	53/25	24.50 ± 5.31	164.77 ± 24.50	59.10 ± 6.88	36.86 ± 4.57	63.60 ± 4.68	53.23 ± 9.05	111.09 ± 11.15