

1 **Impact and cost-effectiveness of the 6-month BPaLM regimen for rifampicin-resistant tuberculosis:** 2 **a mathematical modeling analysis**

3
4 July 28, 2023

5
6 Lyndon P. James,^{1,2} Fayette Klaassen,³ Sedona Sweeney,⁴ Jennifer Furin,⁵ Molly F. Franke,⁵ Reza
7 Yaesoubi,⁶ Dumitru Chesov,^{7,8} Nelly Ciobanu,⁹ Alexandru Codreanu,⁹ Valeriu Crudu,⁹ Ted Cohen,¹⁰
8 Nicolas A. Menzies^{2,3}

9 **Affiliations:**

- 11 1. PhD Program in Health Policy, Harvard University, Cambridge, MA, USA
- 12 2. Center for Health Decision Science, Harvard T. H. Chan School of Public Health, Boston, MA,
13 USA
- 14 3. Department of Global Health and Population, Harvard T. H. Chan School of Public Health,
15 Boston, MA, USA
- 16 4. Faculty of Public Health and Policy, London School of Hygiene and Tropical Medicine, London,
17 UK
- 18 5. Department of Global Health and Social Medicine, Harvard Medical School, Boston, MA, USA
- 19 6. Department of Health Policy and Management, Yale School of Public Health, New Haven, CT,
20 USA
- 21 7. Discipline of Pneumology and Allergology, Nicolae Testemitanu State University of Medicine
22 and Pharmacy, Chisinau, Moldova
- 23 8. Clinical Infectious Diseases, Research Center Borstel, Borstel, Germany
- 24 9. Chiril Draganiuc Institute of Phthisiopneumology, Chisinau, Moldova
- 25 10. Department of Epidemiology and Microbial Diseases, Yale School of Public Health, New Haven,
26 CT, USA

27
28 **Corresponding author:** LPJ

29 **Corresponding author email:** lyj519@mail.harvard.edu

30 **ABSTRACT**

31
32
33 **Background:** Emerging evidence suggests that shortened, simplified treatment regimens for rifampicin-
34 resistant tuberculosis (RR-TB) can achieve comparable end-of-treatment outcomes to longer regimens.
35 We compared a 6-month regimen containing bedaquiline, pretomanid, linezolid, and moxifloxacin
36 (BPaLM) to a standard of care strategy using a 9- or 18-month regimen depending on whether
37 fluoroquinolone resistance (FQ-R) is detected on Drug Susceptibility Testing (DST).
38

39 **Methods and Findings:** Genomic and associated demographic data were used to parameterize a
40 mathematical model estimating long-term health outcomes and costs (2022 USD) for each treatment
41 strategy for patients 15 years and older diagnosed with pulmonary RR-TB in Moldova, a country with a
42 high burden of TB drug resistance. In this model individuals were followed over their lifetime, simulating
43 the natural history of TB and associated treatment outcomes, as well as the process of acquiring resistance
44 to each of 12 anti-TB drugs. Compared to the standard of care, 6 months of BPaLM was estimated to
45 reduce lifetime costs by \$3433 (95% Uncertainty Interval (UI): 1480, 5771) per individual, with a small
46 non-significant reduction in quality adjusted life expectancy of 0.06 QALYs (95% UI: -0.33, 0.45). For
47 those stopping moxifloxacin under the BPaLM regimen, continuing with BPaLC provided more QALYs
48 at lower cost than continuing with BPaL alone. Such a regimen (6 months of BPaLM, where clofazimine
49 is added in the event of moxifloxacin discontinuation) had a 92% chance of being cost-effective. With the
50 exception of pretomanid and delamanid, 6 months of BPaLM either reduced or resulted in no significant
51 change in the cumulative incidence of resistance to each drug. Sensitivity analyses showed 6 months of

52 BPaLM to be cost-effective across a broad range of values for the relative effectiveness of the drug
53 regimens and the proportion of the cohort with FQ-R.

54 **Conclusions:** Compared to the standard of care, the implementation of short-course regimens like
55 BPaLM could improve the cost-effectiveness of care for individuals diagnosed with RR-TB, particularly
56 in settings where current long-course regimens are challenging to implement and afford. Further research
57 may be warranted to explore the suitability of 6 months of BPaLM in specific national settings, including
58 locations where DST capacity is limited.
59

1 INTRODUCTION

2 Treatment for rifampicin-resistant tuberculosis (RR-TB) is complex, involving combinations of several
3 drugs—many of which have substantial potential for toxicity—over a prolonged course of therapy. The
4 2022 WHO Guidelines for the treatment of drug-resistant tuberculosis recommend a shorter, 6-month
5 regimen composed of bedaquiline, pretomanid, linezolid, and moxifloxacin (BPaLM) to treat rifampicin-
6 resistant tuberculosis (RR-TB).¹ These guidelines updated earlier 2020 WHO Guidelines that
7 recommended several treatment regimens, each comprising 4-7 drugs for 9-18 months or longer.²

8
9 The evidence base for shorter regimens for RR-TB has been broadly positive, including results from
10 observational studies,^{3,4} single-arm clinical trials,^{5,6} mathematical modeling analyses,⁷ and the recent
11 multicenter open-label randomized controlled trial TB-PRACTECAL.⁸ Although trial recruitment was
12 stopped early on the recommendation of a planned, interim review by the study monitoring committee,
13 the analysis suggested that 6 months of BPaLM was non-inferior to the standard of care with respect to
14 treatment outcome (a composite of death, treatment failure, treatment discontinuation, loss to follow-up,
15 or recurrence) and was beneficial with respect to safety.⁸ These early results point to some clear potential
16 benefits in terms of shorter, simpler regimens for RR-TB, but the absence of larger, confirmatory trials
17 led to a conditional recommendation by the WHO.

18
19 The 2020 WHO Guidelines represent the existing standard of care in many settings. In addition to higher
20 prices and supply constraints for newer drugs,^{9,10} it is expected that the rollout of the BPaLM regimen as
21 part of the newer 2022 Guidelines may be delayed by concerns about comparative effectiveness and cost-
22 effectiveness^{9,10, 11,12,13} as well as the emergence of drug resistance, particularly in settings with limited
23 capacity to detect resistance to newer antitubercular agents such as bedaquiline, pretomanid, and
24 linezolid.¹⁴ The decision to implement the new 6-month BPaLM regimen will depend on setting-specific
25 tradeoffs between regimen effectiveness, cost, the complexity of treatment decisions, and existing levels

26 of resistance to anti-TB drugs in the population. Decision analysis provides a framework to analyze these
27 tradeoffs, and a recent cost-effectiveness study using evidence from TB-PRACTECAL found that 6-
28 months BPaLM may reduce cost and improve health relative to the standard of care in several countries.¹⁵
29 Our analysis builds on this work by focusing on longer term outcomes that are difficult to measure in a
30 trial setting and by examining a wider range of testing and treatment approaches, including whether
31 patients who must stop moxifloxacin (Mfx)—due to side effects or acquired resistance—should continue
32 on BPaL alone, or BPaL plus clofazimine (BPaLC).^{14,15}

33
34 In this study, we investigated the health impact and cost-effectiveness a 6-month BPaLM regimen for the
35 treatment of adults with pulmonary RR-TB, as compared to the standard of care. We considered a range
36 of treatment strategies incorporating these two approaches, varying the timing and frequency of drug
37 susceptibility testing (DST) as well as how regimens would be modified for individuals developing
38 fluoroquinolone resistance. To estimate outcomes, we used a Markov microsimulation model
39 parameterized with detailed genomic sequencing data describing specific patterns of initial drug
40 resistance, and calculated the effect of each treatment strategy on length and quality of life, accounting for
41 regimen effectiveness, risks of severe adverse events (SAEs) due to drug toxicity, and acquisition of
42 resistance. We conducted the analysis for the setting of Moldova, a country with a high proportion of TB
43 strains resistant to first- and second-line drugs,^{16,17} and explored the generalizability of findings to settings
44 with a different prevalence of initial fluoroquinolone resistance.

1 **METHODS**

2 **Strategies**

3 We compared eight treatment strategies, each reflecting a different approach to drug regimen choice and
4 timing of DST (Table 1). Two strategies adopted drug regimens aligned with the standard of care as
5 defined by the 2020 WHO Guidelines,² with all individuals started on a WHO longer regimen while
6 awaiting the results of second-line DST by MGIT to fluoroquinolones and injectables. Fluoroquinolone
7 resistance (FQ-R) identified via MGIT was assumed to result in the continuation of an 18-month WHO
8 longer regimen, with refinements as necessary based on DST. If fluoroquinolone susceptibility (FQ-S)
9 was detected, treatment was switched to a 9-month regimen (Figure S1). Under one standard of care
10 strategy (strategy (7)), we modelled the minimum guideline-recommended frequency of second-line
11 DST—every 4 months, and in another (strategy (8)) we increased this to a monthly frequency. While the
12 2020 WHO Guidelines did not prescribe exactly one combination of drugs for each scenario, we adopted
13 a single combination of drugs for each situation for tractability, based on our best interpretation of the
14 guideline’s hierarchy of group A, B, and C drugs (Figure S1).

15 The remaining six strategies were modeled on the 2022 WHO Guidelines¹⁸ with 6-month BPaLM-based
16 regimens. In three of these strategies, individuals having to stop Moxifloxacin (because of a SAE or
17 because resistance was detected on DST) were continued on BPaL alone, as recommended by the 2022
18 Guidelines. In the remaining three, they continued on BPaLC. The remaining differences between these
19 six strategies depended on the prescribed schedule of DST to second-line drugs; in two of these strategies,
20 we explored the effects of omitting routine second-line DST at treatment initiation (Table 1).

21 **Population and data**

22 We modeled a cohort of individuals aged 15 years and older diagnosed with RR-TB in Moldova. For each
23 individual, their age and the resistance profile of the strain of *M. tuberculosis* causing infection were
24 informed by publicly available genomic sequencing data from Moldova.¹⁹ These data were collected in
25 2018–2019, and a full description has been provided by Yang and colleagues.¹⁷ We assumed that there
26 was only one strain of *M. tuberculosis* per individual (i.e., that there were no mixed infections) and that a
27 mutation associated with resistance conferred full resistance to that drug. *M. tuberculosis* strains lacking
28 relevant resistance mutations were assumed to be fully susceptible to the respective drugs. We excluded
29 data for rifampicin susceptible strains (Figure S3) leaving 674 distinct samples. The proportion of isolates
30 with resistance to each drug is shown in Figure S5. This analysis used publicly available data, and did not
31 require ethical approval.

32

33 **Model**

34 We used a Markov microsimulation model to simulate lifetime outcomes for a cohort of 10,000
35 individuals. Individuals in the model were simulated by random draws from the genomic sequencing
36 dataset, with replacement. They were each assigned a drug regimen based on the modeled strategy (Table
37 1). Individuals then were assumed to transition between four health states: (1) Receiving TB treatment,
38 (2) TB disease – not receiving treatment, (3) Cured post-treatment, and (4) Dead (Figure S2). Within each
39 Markov state, individual events were tracked including true cure, the occurrence of SAEs, second-line
40 DST, changes to the drug regimen, loss to follow-up, relapse, death, and the evolution of drug resistance
41 for that individual's strain of *M. tuberculosis*. Extensions to the treatment regimen were implemented for
42 those not observed to have successfully completed treatment.

43 While the range of SAEs resulting from TB treatment are of many varying durations and degrees of
44 impact on quality of life, we accounted for these events in a simplified way by modeling the risk of a

45 grade 4-5 SAE during the first three months of exposure to each drug, with each SAE conferring a small
46 but lifelong deduction in quality of life (Table S1). SAEs and diagnosed resistance constituted lifetime
47 contraindications to the relevant drug, and replacements were made according to the modelled strategy
48 (Table 1).

49 Each month, we tracked the drug regimen and the true resistance profile of each individual's strain of *M.*
50 *tuberculosis*. The number of effective drugs in a regimen was defined as the sum of all drugs being
51 received, minus those drugs to which the strain of *M. tuberculosis* was resistant. The number of effective
52 drugs was used to calculate the rate of cure in the current month (higher with more effective drugs), and
53 the rate of acquisition of new resistance to the remaining effective drugs (lower with more effective
54 drugs; Figure S4 and Table S1). DST to second-line drugs was performed at a frequency informed by the
55 strategy (Table 1), with sensitivity and specificity for diagnosing resistance incorporated (Table S1).

56 Additional detail on model structure is provided in the Supplement.

57 The effect estimate for cure in BPALM-based strategies as compared to the standard of care was modeled
58 as the trial estimate for sputum culture conversion from TB-PRACTECAL, conditional on the number of
59 effective drugs in the regimen, up to a maximum of four (i.e., four effective drugs confer a faster cure rate
60 than three, but five or more effective drugs do not confer a faster cure rate than four).⁸ We varied this
61 parameter in sensitivity analysis. Figure S4 displays the modeled rate of acquisition of new resistance to
62 each drug conditional on the number of effective drugs, also to a maximum of four. Table S1 details the
63 derivation and values for these and all other model parameters.

64

65 **Outcomes**

66 We measured health outcomes in quality-adjusted life years (QALYs). For each modeled individual, this
67 measure sums the years of life over the individual's remaining lifetime, weighted by the health-related
68 quality of life experienced in each month.²⁰

69 We measured the impact on drug resistance by summing for each individual, and for each of 12 anti-TB
70 drugs, the number of months they experienced TB disease with resistance to that drug. We then calculated
71 three summary measures for the impact on drug resistance. In the first, we calculated the mean duration
72 with resistance to each drug for the entire cohort by aggregating the time with resistance across the whole
73 cohort for each drug, then dividing by the size of the starting cohort. Second, we calculated the mean
74 duration of *untreated* TB disease with resistance to each drug by summing the time with resistance only
75 among those individuals in Markov state (2)—TB disease no longer receiving treatment—and again
76 averaging across the starting cohort. These measures were designed to reflect the relevance of the policies
77 for transmission of drug resistance. We calculated both because—for individuals no longer receiving
78 treatment—there could be a higher risk that *M. tuberculosis* will transmit to another host, compared to the
79 cohort as a whole. Third, we calculated the lifetime cumulative incidence of acquiring resistance to each
80 drug, per individual in the cohort.

81 As a set of secondary health outcomes, we calculated the number of severe adverse events (SAEs)
82 experienced per patient to each of the drugs, total life years (LYs), and the proportion of individuals
83 experiencing the end-of-treatment outcomes of Success, Failed by Treatment, Lost to Follow-up (LTFU),
84 and Dead, as would typically be reported programmatically to the WHO.

85 We measured the total costs under each strategy from the societal perspective in 2022 United States
86 dollars (\$) as the sum of direct healthcare, direct non-healthcare, and indirect costs accruing in each
87 period. Direct healthcare costs (i.e., arising directly from the consumption of healthcare goods and
88 services) were calculated by adding the costs of the drugs received, DST to second-line drugs, and a
89 baseline healthcare resource utilization in the form of inpatient and outpatient services. Each SAE was
90 accompanied by a utilization cost for inpatient and outpatient services. Direct non-healthcare costs (e.g.,
91 transportation) and indirect costs (e.g., productivity losses) accrued for every additional month on
92 treatment. The indirect costs also accrued for those LTFU prior to cure. Productivity losses secondary to
93 early mortality were not included in total costs, and were calculated separately.

94 Undiscounted values were calculated at for all outcomes. For QALYs and total costs only, discounted
95 values were also calculated using an annual discount rate of 3%.

96 *Cost-effectiveness analysis*

97 First, we ruled out dominated strategies (i.e., those strategies that were both more expensive and provided
98 fewer QALYs on average than a linear combination of other strategies. We then calculated the
99 incremental cost-effectiveness ratio (ICER; a measure of the additional cost required to produce one
100 additional QALY, as compared to the next cheapest, non-dominated strategy) and identified the cost-
101 effective strategy as that with the greatest health gains subject to the constraint that— in order to provide
102 value for money—the ICER be below the willingness-to-pay (WTP) threshold.^{21,22} Lower (\$4700 per
103 QALY) and higher (\$7021 per QALY) benchmarks for these thresholds in Moldova were based on
104 published estimates using an opportunity cost approach,²³ updated to 2022 USD (Table S1). As ICERs
105 may be difficult to interpret in some cases,²⁴ we also calculated the Net Health Benefit (NHB) of each
106 strategy (see Supplement B), with the cost-effective strategy identified as that with the highest NHB.²¹
107 This is mathematically equivalent to the ICER approach. The 2022 CHEERS checklist is included in
108 Supplement A.²⁵

109

110 **Statistical analysis**

111 We estimated results via individual-level microsimulation, with lifetime outcomes for each of 10,000
112 individuals simulated for each of the diagnostic and treatment strategies described above.

113 *Sensitivity analyses*

114 Probabilistic Sensitivity Analysis (PSA) was conducted to account for uncertainty by constructing
115 distributions for model input parameters (Table S1). In a second-order Monte Carlo simulation, we drew
116 1,000 parameters sets from the distributions. For each parameter set, the 10,000 individuals were

117 simulated through each strategy, and a set of results was calculated. Finally, point estimates for each
118 outcome were calculated as the mean of these 1,000 second-order simulations, and 95% uncertainty
119 intervals (UIs) were constructed using the 2.5th and 97.5th centiles.²⁶

120 Some important model parameters have substantial uncertainty. We performed one-way sensitivity
121 analyses on two of these key inputs to understand the relationship with study outcomes. First, we varied
122 the main effect estimate for cure across a uniform distribution fit to the published 95% confidence interval
123 (1.18, 2.14).⁸ Next, we varied the prevalence of fluoroquinolone resistance among diagnosed RR-TB
124 across the uniform distribution (0%, 40%) to aid the generalization of results to settings with a different
125 prevalence of fluoroquinolone resistance.

126 *Validation*

127 We validated the modeled end-of-treatment (EOT) outcomes to estimates reported to WHO over the
128 period 2010-2019. Further detail is provided in the Supplement.

129 *Software*

130 The simulation was conducted in TreeAge Pro Healthcare 2023,²⁷ and figures were made in R²⁷ using
131 several packages.²⁸⁻³⁶

1 RESULTS

2 Health effects, costs, and cost-effectiveness

3 Health effects, costs, and cost-effectiveness results for all strategies are presented in Table 2 and Figure 1.

4 Among the 6-month BPaLM strategies, the highest health benefits were achieved by Strategy (1) (BPaLC
5 if Mfx stopped, second-line DST upfront, then repeated at 4 monthly intervals), with undiscounted
6 QALYs of 14.91 (95% UI: 12.98, 16.81). Among the standard of care strategies, Strategy (7) (DST every
7 4 months) had the best performance, producing 14.99 (95% UI: 13.05, 16.80) undiscounted QALYs, an
8 additional 0.08 QALYs (95% UI: -0.52, 0.68) compared to Strategy (1).

9 Strategy (5) (6-months BPaLM, second-line DST at 4 months and then every 4 months, BPaLC if Mfx
10 stopped) had the lowest undiscounted lifetime total costs (\$8176, 95% UI: 6245, 10379), followed by
11 Strategy (1) and Strategy (2) (Table 1).

12 Compared to 6-month BPaLM-based strategies where BPaLC was used if Mfx had to be stopped,
13 strategies continuing only the three-drug regimen BPaL (Strategies (3), (4), and (6)) resulted in worse
14 overall health *and* additional lifetime total costs. The frequency of second-line DST did not lead to large
15 differences in health or cost outcomes (Figure 1).

16 We compared cost-effectiveness ratios (ICERs) to current cost-effectiveness criteria for Moldova, with
17 the willingness-to-pay for health improvements assumed to fall between \$4700 and \$7021 per QALY
18 gained. According to this approach Strategy (1) (6-months BPaLM, DST upfront then every 4 months,
19 BPaLC if Mfx stopped) was the cost-effective strategy with an ICER of \$1181 per QALY. Strategy (7)
20 was potentially cost-effective, but only with a willingness to pay over \$60,622 per additional QALY.

21 Figure 1B shows the probability of each strategy being cost-effective at a given cost-effectiveness
22 threshold. Within the range of cost-effectiveness thresholds for Moldova, Strategy (1) had the highest
23 probability of being cost-effective (37-42%, depending on the threshold). Taken together, the probability
24 that one of Strategies (1), (2) and (5) (i.e., strategies that use 6-months BPaLM and continued BPaLC for

25 those stopping Mfx) would be cost-effective was greater than 92% across the range of cost-effectiveness
26 thresholds for Moldova. In subsequent sections, we make comparisons between the best performing (i.e.,
27 cost-effective) 6-month BPALM-based and standard of care-based strategies: Strategy (1) and Strategy
28 (7), respectively.

29

30 **Drug resistance**

31 Compared to Strategy (7), Strategy (1) increased the mean duration with resistance to pretomanid and
32 delamanid among the entire cohort, and also when counting time only among those no longer receiving
33 treatment. For all other drugs, however, Strategy (1) was estimated either to produce no statistically-
34 significant change (i.e., 95% UI for the difference included zero) or to produce statistically significant
35 reductions in the duration with resistance (Figure 3, Figure S8). Compared to Strategy (7), Strategy (1)
36 was estimated to result in either no statistically-significant difference, or a lower lifetime cumulative
37 incidence of resistance for all drugs, except for pretomanid and delamanid (Figure S9).

38

39 **Secondary outcomes**

40 Under Strategy (1), the mean number of SAEs ever experienced per individual was 0.238 (95% UI: 0.197,
41 0.284). Strategy (7) resulted in a mean number of SAEs of 0.265 (95% UI: 0.235, 0.297), an increase of
42 0.028 (95% UI: -0.011, 0.059) compared to Strategy (1). Figure 4 displays the proportion ever
43 experiencing an SAE to each drug; the estimates were lower for Strategy (1) than for Strategy (7) for all
44 drugs except linezolid and pretomanid. When health benefits were measured using life years instead of
45 QALYs, Strategy (7) was again estimated to provide a small, non-significant health benefit over Strategy
46 (1) (Table S3). The lowest life expectancy was estimated for Strategies (3), (4), and (6) (BPALM-based
47 strategies where BPAL was continued in the event of Mfx being stopped). End of treatment outcomes are
48 shown in Figure S10.

49

50 **Sensitivity Analyses**

51 Figure 5 shows how cost-effectiveness results change for different values of the hazard rate ratio (HRR)
52 of cure, and the initial prevalence of fluoroquinolone resistance, for Strategy (1) as compared to Strategy
53 (7). In these results, Strategy (1) was estimated to be cost-effective (i.e., had a positive Net Health
54 Benefit) compared to Strategy (7) across the range of values used for these parameters. Similarly, total
55 costs were lower for Strategy (1) compared to Strategy (7) across the range of values assessed. Health
56 outcomes were sensitive to the value of the HRR for cure for the BPaLM regimen as compared to
57 standard of care regimens. For low values of the HRR (HRR = 1.2), Strategy (1) was estimated to lead to
58 a mean 0.55 reduction in QALYs. For high values (HRR = 2), Strategy (1) would lead to a mean 0.35
59 gain in QALYs.

1 **DISCUSSION**

2 In this study we assessed the potential health impact and cost effectiveness of a 6-month BPaLM regimen
3 for treating RR-TB in a setting with a high prevalence of TB drug resistance. Compared to a strategy
4 using 9-18 month regimens based on the 2020 WHO treatment guidelines for drug-resistant TB, we found
5 the 6-month BPaLM regimen would be cost-effective across a range of WTP thresholds, with substantial
6 reductions in the duration and cost of treatment, but little expected change in health outcomes. If
7 implementing a 6-month BPaLM regimen, our analysis suggests that individuals stopping moxifloxain—
8 because of an SAE or a resistant DST result—would be better off with the addition of clofazimine than
9 continuing on BPaL alone. Holding the drug regimen constant, the frequency of second-line DST (to
10 fluoroquinolones and injectables) did not result in substantial differences to health or cost outcomes.

11 These findings are in line with cost-effectiveness analyses of the TB-PRACTECAL randomized
12 controlled trial,¹⁵ which drew similar conclusions for populations across South Africa, Belarus and
13 Uzbekistan. Belarus also has a high proportion of RR-TB among newly diagnosed TB cases,² but we do
14 not know whether the joint distribution of resistance to other important drugs would differ between
15 Belarus and Moldova. Although South Africa and Uzbekistan have a lower prevalence of resistance to
16 many drugs, we found that 6 months of BPaLM remained cost-effective when the proportion of RR-TB
17 patients with FQ-R was varied across the wide range of 0-40% (compared to Moldova at 28%). Our
18 analysis builds on the aforementioned cost-effectiveness analysis by explicitly modelling the acquisition
19 of drug resistance, with the initial cohort resistance profile informed by genetic sequencing data from
20 Moldova. We also investigated the potential effects of a larger number of policy implementation
21 scenarios, including the frequency of DST, and whether patients having to stop Mfx under BPaLM should
22 continue on BPaL alone or continue on an alternative four-drug regimen.

23 When modeling the effectiveness estimate for BPaLM as compared to the standard of care, we assumed
24 that the treatment effect for true cure in the model was approximated by the treatment effect for sputum
25 culture conversion from the TB-PRACTECAL trial.⁸ Although the trial measured clinical outcomes, its

26 primary composite outcome measure combined treatment failure, discontinuation, LTFU, death and
27 recurrence, outcomes that are important to distinguish to calculate long-term health outcomes. The
28 numbers of individuals experiencing each of the long-term outcomes of greatest clinical interest were
29 very small. Even if the effect on true cure is not the same as on culture conversion, we found that 6-
30 months BPaLM remained the cost-effective strategy when the HRR (point estimate 1.59) was varied over
31 the published 95% confidence interval (1.18, 2.14).

32 While both regimens perform best at lower levels of resistance, sensitivity analyses showed that 6 months
33 of BPaLM may result in a small, non-significant reduction in total QALYs as compared to the standard of
34 care at lower levels of initial FQ-R, or if the BPaLM regimen has lower comparative effectiveness than
35 estimated in the TB-PRACTECAL trial, even while it provides overall value for money. Although some
36 policymakers may be uncomfortable adopting interventions that reduce health benefit on expectation, this
37 difference is small and highly uncertain, and adopting the new regimen would bring substantial benefits in
38 the form of reduced regimen duration, and freeing up funding to spend on other health interventions.

39 In this analysis we found that 6 months of BPaLM improved or resulted in no change in the duration of
40 disease with resistant strains of *M. tuberculosis* as well as the cumulative incidence of resistance for all 12
41 anti-TB drugs, except pretomanid and delamanid. Both measures were influenced by the starting profile
42 of resistance as informed by the WGS data, the rate of acquisition of new resistance to each drug under
43 each modeled drug regimen, and the rate of cure. Changes in the rate of acquisition of resistance are
44 important for individuals undergoing treatment today (some of the effects of this are captured in the
45 QALYs estimated under each strategy) but preventing new resistance is also important for the health
46 outcomes of those who will be diagnosed with RR-TB in the future.

47 This analysis had several limitations. The modeled strains of *M. tuberculosis* were based on WGS data
48 from culture positive sputum specimens in 2018-19 in Moldova, and so may not accurately describe
49 current resistance patterns in Moldova or resistance elsewhere, although we hope the sensitivity analysis
50 on the prevalence of FQ-R aids in the generalization of findings. The hazard rate ratio for cure was based
51 on the outcome of sputum culture conversion from TB-PRACTECAL; while culture conversion is a

52 prognostic marker in TB,³⁷ it is not a perfect substitute to quantify the rate of true cure, which is
53 unobservable. Further, real-world outcomes with 6-months BPaLM are likely to be less favorable than in
54 the high-fidelity environment of a randomized controlled trial—for example, there may have been a
55 higher frequency of follow-up in the trial—and the status quo may differ between settings. We did not
56 explicitly model the differences in adherence that may exist between regimens, and we made the
57 simplifying assumption that increasing the number of effective drugs increases the rate of cure and
58 reduces the rate of acquiring resistance. This was based on a previously applied approach⁷ and is likely to
59 hold qualitatively, but we did not account for all the differences that may exist between drugs and the
60 interactions between them. For example, the effectiveness of BPaLC vs. BPaL may not be the same as the
61 effectiveness of BPaLM vs. BPaL, yet—SAEs aside—the modelling approach was agnostic to this,
62 conditional on the resistance profile of the strain of *M. tuberculosis*. Although the probability of an SAE
63 was modelled separately for each drug, we did not incorporate the real-world variation in the duration and
64 consequences of each type of SAE. Finally, we did not formally estimate the longer-term implications of
65 resistance; for this, it would be necessary to model the transmission dynamics of *M. tuberculosis*. Instead,
66 we estimated the cumulative incidence and duration of resistance as surrogates for the long-term health
67 outcomes they may affect, insofar as lower incidence and fewer months of resistant disease would each
68 result in less transmission of resistant strains.

69 This study was conducted in the setting of Moldova, a country with a high proportion of RR-TB with
70 resistance to second-line drugs. Through sensitivity analysis on the proportion with FQ-R, we aimed to
71 aid the generalization of findings to other settings. Many of the health-related model parameters are also
72 generalizable beyond Moldova, as TB outcomes under the standard of care were informed by multi-
73 national meta-analyses, and the estimate for comparative effectiveness was from a multi-national trial
74 (Table S1). However, many of the cost parameters were from Moldova and Georgia (GDP per capita of
75 \$5,563 and \$6,628 in 2022, respectively),³⁸ and so there are likely limitations in the generalization of
76 incremental costs of 6 months BPaLM compared to the standard of care, especially to countries with very
77 different income levels.

78 To optimize clinical care for RR-TB, decision makers must take account of important health and
79 economic effects for affected individuals as well as society at large. In this study, we estimated favorable
80 outcomes under the 6-month BPaLM regimen in settings with a high burden of drug resistance,
81 conditional on BPaLC being used in the event of moxifloxacin being contraindicated, rather than BPaL
82 alone. The schedule of second-line DST did not appear to affect health outcomes or costs to a great
83 degree across the finite number of DST schedules we explored, and further analyses may be warranted to
84 explore the optimal testing frequency in Moldova and other settings—especially where second-line DST
85 capacity is limited or unavailable³⁹—and to explore additional technologies beyond MGIT for identifying
86 resistance to fluoroquinolones and injectables. RR-TB treatment policy would further be enhanced by
87 continuing to strengthen the empirical evidence base for the comparative effectiveness of different
88 treatment regimens, with sufficient numbers of patients to quantify long-term health outcomes across
89 multiple settings.

1 **General Acknowledgments:** For helpful feedback on research-in-progress presentations, LPJ would like
2 to thank current and former students, postdocs and faculty affiliated with: the Center for Health Decision
3 Science, the PhD Program in Health Policy, and the Center for AIDS Research, all at Harvard University,
4 Cambridge, MA, USA; the Decision Science Methods Group at Erasmus University, Rotterdam, the
5 Netherlands.

6
7 **Funding Acknowledgment and Disclaimer:** This publication was made possible by Grant Numbers T32
8 AI007433 and R01 AI146555-02 from the National Institute of Allergy and Infectious Diseases. Its
9 contents are solely the responsibility of the authors and do not necessarily represent the official views of
10 the NIH.

11
12 **Potential Conflicts of Interest:** JF has received grant funding from the Stop TB Partnership's Global
13 Drug Facility to support the roll out of child-friendly formulations of second-line TB drugs.

REFERENCES

1. WHO consolidated guidelines on tuberculosis. Module 4: treatment - drug-resistant tuberculosis treatment, 2022 update [Internet]. [cited 2023 Mar 29]. Available from: <https://www.who.int/publications/i/item/9789240063129>
2. WHO Consolidated Guidelines on Tuberculosis, Module 4: Treatment - Drug-Resistant Tuberculosis Treatment [Internet]. World Health Organization; 2020 [cited 2021 Jan 13]. Available from: <https://www.who.int/publications-detail-redirect/9789240007048>
3. Abidi S, Achar J, Assao Neino MM, Bang D, Benedetti A, Brode S, et al. Standardised shorter regimens *versus* individualised longer regimens for rifampin- or multidrug-resistant tuberculosis. *Eur Respir J*. 2020 Mar;55(3):1901467.
4. Kempker RR, Mikiashvili L, Zhao Y, Benkeser D, Barbakadze K, Bablishvili N, et al. Clinical Outcomes Among Patients With Drug-resistant Tuberculosis Receiving Bedaquiline- or Delamanid-Containing Regimens. *Clin Infect Dis Off Publ Infect Dis Soc Am*. 2019 Nov 12;71(9):2336–44.
5. Conradie F, Bagdasaryan TR, Borisov S, Howell P, Mikiashvili L, Ngubane N, et al. Bedaquiline–Pretomanid–Linezolid Regimens for Drug-Resistant Tuberculosis. *N Engl J Med*. 2022 Sep 1;387(9):810–23.
6. Conradie F, Diacon AH, Ngubane N, Howell P, Everitt D, Crook AM, et al. Bedaquiline, pretomanid and linezolid for treatment of extensively drug resistant, intolerant or non-responsive multidrug resistant pulmonary tuberculosis. *N Engl J Med*. 2020 Mar 5;382(10):893–902.
7. Kendall EA, Malhotra S, Cook-Scalise S, Denkinger CM, Dowdy DW. Estimating the impact of a novel drug regimen for treatment of tuberculosis: a modeling analysis of projected patient outcomes and epidemiological considerations. *BMC Infect Dis* [Internet]. 2019 Sep 9 [cited 2021 Jan 8];19. Available from: <https://www.ncbi.nlm.nih.gov/pmc/articles/PMC6734288/>
8. Nyang’wa BT, Berry C, Kazounis E, Motta I, Parpieva N, Tigay Z, et al. A 24-Week, All-Oral Regimen for Rifampin-Resistant Tuberculosis. *N Engl J Med*. 2022 Dec 22;387(25):2331–43.
9. Global Drug Facility (GDF) Medicines Catalog [Internet]. Stop TB Partnership; 2022 [cited 2022 Mar 12]. Available from: https://www.stoptb.org/sites/default/files/gdfmedicinescatalog_1.pdf
10. Price reduction paves the way for expanded access to highly effective multidrug-resistant tuberculosis treatment [Internet]. TB Alliance. [cited 2023 Jun 17]. Available from: <https://www.tballiance.org/za/news/price-reduction-paves-the-way-for-expanded-access-to-highly-effective-multidrug-resistant-tuberculosis-treatment>
11. zur Wiesch PA, Kouyos R, Engelstädter J, Regoes RR, Bonhoeffer S. Population biological principles of drug-resistance evolution in infectious diseases. *Lancet Infect Dis*. 2011 Mar;11(3):236–47.
12. Kaniga K, Hasan R, Jou R, Vasiliauskienė E, Chuchottaworn C, Ismail N, et al. Bedaquiline Drug Resistance Emergence Assessment in Multidrug-Resistant Tuberculosis (MDR-TB): a 5-Year Prospective In Vitro Surveillance Study of Bedaquiline and Other Second-Line Drug Susceptibility Testing in MDR-TB Isolates. *J Clin Microbiol*. 2022 Jan 19;60(1):e02919-20.

13. Dheda K, Gumbo T, Lange C, Horsburgh CR, Furin J. Pan-tuberculosis regimens: an argument against. *Lancet Respir Med*. 2018 Apr;6(4):240–2.
14. Vanino E, Granozzi B, Akkerman OW, Munoz-Torrico M, Palmieri F, Seaworth B, et al. Update of drug-resistant tuberculosis treatment guidelines: A turning point. *Int J Infect Dis IJID Off Publ Int Soc Infect Dis*. 2023 Mar 12;S1201-9712(23)00089-9.
15. Sweeney S, Berry C, Kazounis E, Motta I, Vassall A, Dodd M, et al. Cost-effectiveness of short, oral treatment regimens for rifampicin resistant tuberculosis. *PLOS Glob Public Health*. 2022;2(12):e0001337.
16. Global tuberculosis report 2020 [Internet]. [cited 2023 Apr 4]. Available from: <https://www.who.int/publications/i/item/9789240013131>
17. Yang C, Sobkowiak B, Naidu V, Codreanu A, Ciobanu N, Gunasekera KS, et al. Phylogeography and transmission of *M. tuberculosis* in Moldova [Internet]. 2021 Jul [cited 2022 Jan 20] p. 2021.06.30.21259748. Available from: <https://www.medrxiv.org/content/10.1101/2021.06.30.21259748v1>
18. WHO consolidated guidelines on tuberculosis. Module 4: treatment - drug-resistant tuberculosis treatment, 2022 update [Internet]. [cited 2023 Mar 2]. Available from: <https://www.who.int/publications-detail-redirect/9789240063129>
19. ID 736718 - BioProject - NCBI [Internet]. [cited 2023 Feb 9]. Available from: <https://www.ncbi.nlm.nih.gov/ezp-prod1.hul.harvard.edu/bioproject/PRJNA736718>
20. Weinstein MC, Stason WB. Foundations of Cost-Effectiveness Analysis for Health and Medical Practices. *N Engl J Med*. 1977 Mar 31;296(13):716–21.
21. Hunink MGM. Decision making in health and medicine: integrating evidence and values. Second edition. Cambridge: University Press; 2014. (Cambridge medicine (Series)).
22. Meltzer DO, Basu A, Sculpher MJ. Theoretical Foundations of Cost-Effectiveness Analysis in Health and Medicine. In: Neumann PJ, Ganiats TG, Russell LB, Sanders GD, Siegel JE, editors. *Cost-Effectiveness in Health and Medicine* [Internet]. Oxford University Press; 2016 [cited 2023 Jun 18]. p. 0. Available from: <https://doi.org/10.1093/acprof:oso/9780190492939.003.0002>
23. Ochalek J, Lomas J, Claxton K. Estimating health opportunity costs in low-income and middle-income countries: a novel approach and evidence from cross-country data. *BMJ Glob Health*. 2018 Nov 1;3(6):e000964.
24. Paulden M. Why it's Time to Abandon the ICER. *PharmacoEconomics*. 2020 Aug;38(8):781–4.
25. Husereau D, Drummond M, Augustovski F, De Bekker-Grob E, Briggs AH, Carswell C, et al. Consolidated Health Economic Evaluation Reporting Standards (CHEERS) 2022 Explanation and Elaboration: A Report of the ISPOR CHEERS II Good Practices Task Force. *Value Health*. 2022 Jan;25(1):10–31.
26. Briggs AH, Weinstein MC, Fenwick EAL, Karnon J, Sculpher MJ, Paltiel AD, et al. Model parameter estimation and uncertainty: a report of the ISPOR-SMDM Modeling Good Research

- Practices Task Force--6. *Value Health J Int Soc Pharmacoeconomics Outcomes Res.* 2012;15(6):835–42.
27. TreeAge Pro Healthcare 2023 [Internet]. TreeAge Software, Williamstown, MA; Available from: <http://www.treeage.com>
 28. Warnes GR, Bolker B, Gorjanc G, Grothendieck G, Korosec A, Lumley T, et al. gdata: Various R Programming Tools for Data Manipulation [Internet]. 2022 [cited 2023 May 2]. Available from: <https://cran.r-project.org/web/packages/gdata/index.html>
 29. Wickham H, RStudio. tidyverse: Easily Install and Load the “Tidyverse” [Internet]. 2023 [cited 2023 May 2]. Available from: <https://cran.r-project.org/web/packages/tidyverse/index.html>
 30. Wickham H, RStudio. stringr: Simple, Consistent Wrappers for Common String Operations [Internet]. 2022 [cited 2023 May 2]. Available from: <https://cran.r-project.org/web/packages/stringr/index.html>
 31. Robinson D, Hayes A, Couch [aut S, cre, Software P, PBC, et al. broom: Convert Statistical Objects into Tidy Tibbles [Internet]. 2023 [cited 2023 May 2]. Available from: <https://cran.r-project.org/web/packages/broom/index.html>
 32. Wickham H, François R, Henry L, Müller K, Vaughan D, Software P, et al. dplyr: A Grammar of Data Manipulation [Internet]. 2023 [cited 2023 May 2]. Available from: <https://cran.r-project.org/web/packages/dplyr/index.html>
 33. Kassambara A. ggpubr: “ggplot2” Based Publication Ready Plots [Internet]. 2023 [cited 2023 May 2]. Available from: <https://cran.r-project.org/web/packages/ggpubr/index.html>
 34. Garnier S, Ross N, Rudis B, Sciaini M, Camargo AP, Scherer C. viridis: Colorblind-Friendly Color Maps for R [Internet]. 2021 [cited 2023 May 2]. Available from: <https://cran.r-project.org/web/packages/viridis/index.html>
 35. Firke S, Denney B, Haid C, Knight R, Grosser M, Zadra J. janitor: Simple Tools for Examining and Cleaning Dirty Data [Internet]. 2023 [cited 2023 May 2]. Available from: <https://cran.r-project.org/web/packages/janitor/index.html>
 36. Wickham H. reshape2: Flexibly Reshape Data: A Reboot of the Reshape Package [Internet]. 2020 [cited 2023 May 2]. Available from: <https://cran.r-project.org/web/packages/reshape2/index.html>
 37. Kurbatova EV, Cegielski JP, Lienhardt C, Akksilp R, Bayona J, Becerra MC, et al. Sputum culture conversion as a prognostic marker for end-of-treatment outcome in patients with multidrug-resistant tuberculosis: a secondary analysis of data from two observational cohort studies. *Lancet Respir Med.* 2015 Mar;3(3):201–9.
 38. World Bank Open Data [Internet]. Available from: <https://data.worldbank.org/>
 39. Wallis RS, Cohen T, Menzies NA, Churchyard G. Pan-tuberculosis regimens: an argument for. *Lancet Respir Med.* 2018 Apr;6(4):239–40.

40. Tasneen R, Williams K, Amoabeng O, Minkowski A, Mdluli KE, Upton AM, et al. Contribution of the nitroimidazoles PA-824 and TBA-354 to the activity of novel regimens in murine models of tuberculosis. *Antimicrob Agents Chemother*. 2015 Jan;59(1):129–35.
41. Liu Y, Gao J, Du J, Shu W, Wang L, Wang Y, et al. Acquisition of clofazimine resistance following bedaquiline treatment for multidrug-resistant tuberculosis. *Int J Infect Dis IJID Off Publ Int Soc Infect Dis*. 2021 Jan;102:392–6.
42. Nambiar R, Tornheim JA, Diricks M, Bruyne KD, Sadani M, Shetty A, et al. Linezolid resistance in *Mycobacterium tuberculosis* isolates at a tertiary care centre in Mumbai, India. *Indian J Med Res*. 2021 Jul;154(1):85–9.
43. Lee M, Lee J, Carroll MW, Choi H, Min S, Song T, et al. Linezolid for treatment of chronic extensively drug-resistant tuberculosis. *N Engl J Med*. 2012 Oct 18;367(16):1508–18.
44. World Population Prospects [Internet]. UN Population Division, Department of Economic and Social Affairs.; 2019 [cited 2021 Apr 1]. Available from: [https://population.un.org/wpp/Download/Files/1_Indicators%20\(Standard\)/EXCEL_FILES/3_Mortality/WPP2019_MORT_F15_1_LIFE_TABLE_SURVIVORS_BOTH_SEXES.xlsx](https://population.un.org/wpp/Download/Files/1_Indicators%20(Standard)/EXCEL_FILES/3_Mortality/WPP2019_MORT_F15_1_LIFE_TABLE_SURVIVORS_BOTH_SEXES.xlsx)
45. Ragonnet R, Flegg JA, Brilleman SL, Tiemersma EW, Melsew YA, McBryde ES, et al. Revisiting the Natural History of Pulmonary Tuberculosis: A Bayesian Estimation of Natural Recovery and Mortality Rates. :9.
46. Romanowski K, Baumann B, Basham CA, Ahmad Khan F, Fox GJ, Johnston JC. Long-term all-cause mortality in people treated for tuberculosis: a systematic review and meta-analysis. *Lancet Infect Dis*. 2019 Oct;19(10):1129–37.
47. Bastos ML, Lan Z, Menzies D. An updated systematic review and meta-analysis for treatment of multidrug-resistant tuberculosis. *Eur Respir J [Internet]*. 2017 Mar 1 [cited 2021 May 13];49(3). Available from: <https://erj.ersjournals.com/content/49/3/1600803>
48. Yuen CM, Kurbatova EV, Tupasi T, Caoili JC, Walt MVD, Kvasnovsky C, et al. Association between Regimen Composition and Treatment Response in Patients with Multidrug-Resistant Tuberculosis: A Prospective Cohort Study. *PLOS Med*. 2015 Dec 29;12(12):e1001932.
49. Walker IF, Shi O, Hicks JP, Elsey H, Wei X, Menzies D, et al. Analysis of loss to follow-up in 4099 multidrug-resistant pulmonary tuberculosis patients. *Eur Respir J*. 2019 Jul;54(1).
50. Blöndal K, Viiklepp P, Guðmundsson LJ, Altraja A. Predictors of recurrence of multidrug-resistant and extensively drug-resistant tuberculosis. *Int J Tuberc Lung Dis*. 2012 Sep 1;16(9):1228–33.
51. Lew W, Pai M, Oxlade O, Martin D, Menzies D. Initial Drug Resistance and Tuberculosis Treatment Outcomes: Systematic Review and Meta-analysis. *Ann Intern Med*. 2008 Jul 15;149(2):123–34.
52. A concurrent comparison of isoniazid plus PAS with three regimens of isoniazid alone in the domiciliary treatment of pulmonary tuberculosis in South India. *Bull World Health Organ*. 1960;23(4–5):535–85.

53. Lan Z, Ahmad N, Baghaei P, Barkane L, Benedetti A, Brode SK, et al. Drug-associated adverse events in the treatment of multidrug-resistant tuberculosis: an individual patient data meta-analysis. *Lancet Respir Med*. 2020 Apr;8(4):383–94.
54. Gils T, Lynen L, de Jong BC, Van Deun A, Decroo T. Pretomanid for tuberculosis: a systematic review. *Clin Microbiol Infect*. 2022 Jan;28(1):31–42.
55. Borisov S, Danila E, Maryandyshev A, Dalcolmo M, Miliauskas S, Kuksa L, et al. Surveillance of adverse events in the treatment of drug-resistant tuberculosis: first global report. *Eur Respir J* [Internet]. 2019 Dec 1 [cited 2022 Mar 23];54(6). Available from: <https://erj.ersjournals.com/content/54/6/1901522>
56. Schnippel K, Firnhaber C, Berhanu R, Page-Shipp L, Sinanovic E. Direct costs of managing adverse drug reactions during rifampicin-resistant tuberculosis treatment in South Africa. *Int J Tuberc Lung Dis*. 2018 Apr 1;22(4):393–8.
57. Bauer M, Ahmed S, Benedetti A, Greenaway C, Lalli M, Leavens A, et al. The impact of tuberculosis on health utility: a longitudinal cohort study. *Qual Life Res*. 2015 Jun 1;24(6):1337–49.
58. Takahara M, Katakami N, Shiraiwa T, Abe K, Ayame H, Ishimaru Y, et al. Evaluation of health utility values for diabetic complications, treatment regimens, glycemic control and other subjective symptoms in diabetic patients using the EQ-5D-5L. *Acta Diabetol*. 2019 Mar;56(3):309–19.
59. Chikovani I, Shengelia N, Marjanishvili N, Gabunia T, Khonelidze I, Cunnama L, et al. Cost of TB services in the public and private sectors in Georgia (No 2). *Int J Tuberc Lung Dis*. 2021 Dec 1;25(12):1019–27.
60. Cates L, Crudu V, Codreanu A, Ciobanu N, Fosburgh H, Cohen T, et al. Laboratory costs of diagnosing TB in a high multidrug-resistant TB setting. *Int J Tuberc Lung Dis Off J Int Union Tuberc Lung Dis*. 2021 Mar 1;25(3):228–30.
61. Myambutol (ethambutol) dosing, indications, interactions, adverse effects, and more [Internet]. [cited 2023 Feb 18]. Available from: <https://reference.medscape.com/drug/myambutol-ethambutol-342677>
62. pyrazinamide: Dosing, contraindications, side effects, and pill pictures - epocrates online [Internet]. [cited 2023 Feb 18]. Available from: <https://online.epocrates.com/drugs/279/pyrazinamide>
63. Sweeney S, Cunnama L, Laurence Y, Garcia Baena I, Kairu A, Minyewelet M, et al. Value TB Dataset: costs per intervention [Internet]. *Harvard Dataverse*; 2021 [cited 2021 Nov 17]. Available from: <https://dataverse.harvard.edu/dataset.xhtml?persistentId=doi:10.7910/DVN/QOI6IR>
64. UNdata | record view | Life expectancy at birth for both sexes combined (years) [Internet]. [cited 2022 Mar 24]. Available from: <http://data.un.org/Data.aspx?q=moldova&d=PopDiv&f=variableID%3A68%3BcrID%3A498>
65. xe.com Currency Charts [Internet]. Available from: <https://www.xe.com/currencycharts/>
66. World Bank International Comparisons Project [Internet]. [cited 2022 Mar 21]. Available from: <https://databank.worldbank.org/embed/ICP-2017-Cycle/id/4add74e?inf=n>

67. Tekin K, Albay A, Simsek H, Sig AK, Guney M. Evaluation of the BACTEC MGIT 960 SL DST Kit and the GenoType MTBDRsl Test for Detecting Extensively Drug-resistant Tuberculosis Cases. *Eurasian J Med.* 2017 Oct;49(3):183–7.
68. Devasia RA, Blackman A, May C, Eden S, Smith T, Hooper N, et al. Fluoroquinolone resistance in *Mycobacterium tuberculosis*: an assessment of MGIT 960, MODS and nitrate reductase assay and fluoroquinolone cross-resistance. *J Antimicrob Chemother.* 2009 Jun;63(6):1173–8.

TABLE 1. Key features of the modeled strategies

| Strategy No. | Guidelines informing the strategy | Drug regimen | Regimen duration | For BPaLM-based strategies only, prescribed regimen for those who discontinue Moxifloxacin | Replacement drugs, in order, for all other discontinuations | DST for second-line drugs (MGIT) at treatment initiation | Routine frequency of subsequent DST for second-line drugs | Indications for drug discontinuation | Length of regimen extension, if necessary | |
|--------------|--|---|------------------|--|---|--|---|--|---|--|
| 1 | 2022 WHO Guidelines | BPaLM | 6 months | BPaLC | Clofazimine, Cycloserine | Yes | 4 months | Immediately following: • Resistance identified on DST • Severe Adverse Event | 6 months | |
| 2 | 2022 WHO Guidelines | BPaLM | 6 months | BPaLC | | Yes | 1 month | | | |
| 3 | 2022 WHO Guidelines | BPaLM | 6 months | BPaL | | Yes | 4 months | | | |
| 4 | 2022 WHO Guidelines | BPaLM | 6 months | BPaL | | Yes | 1 month | | | |
| 5 | 2022 WHO Guidelines | BPaLM | 6 months | BPaLC | | No | 4 months | | | |
| 6 | 2022 WHO Guidelines | BPaLM | 6 months | BPaL | | No | 4 months | | | |
| 7 | 2020 WHO Guidelines (standard of care) | Start treatment with WHO Longer regimen (bedaquiline, clofazimine, linezolid, moxifloxacin), await second-line DST. If FO-R , continue on WHO Longer regimen, i.e.: | | | Ethambutol, Delamanid, Pyrazinamide, Amikacin, Ethionamide | Yes | 4 months | | | |
| | | Bedaquiline, Clofazimine, Linezolid, Cycloserine | 18 months | n/a | | | | | | |
| | | If FO-S , switch to 2020 WHO shorter, all-oral bedaquiline containing regimen: | | | | | | | | |
| | | Bedaquiline, Clofazimine, Ethambutol, Ethionamide, Isoniazid, Moxifloxacin, Pyrazinamide | 9 months | n/a | Delamanid, Cycloserine | | | | | |
| 8 | 2020 WHO Guidelines (standard of care) | As for Strategy No. 7 | | | | | Yes | 1 month | | |

Regimen extensions are implemented for those who have not yet successfully completed treatment. While the 2020 WHO Guidelines recommended the BPaL regimen in specific situations, none of the modelled cohort met the inclusion criteria to receive BPaL under those strategies. BPaL – bedaquiline, pretomanid, linezolid; BPaLC – bedaquiline, pretomanid, linezolid, clofazimine; BPaLM – bedaquiline,

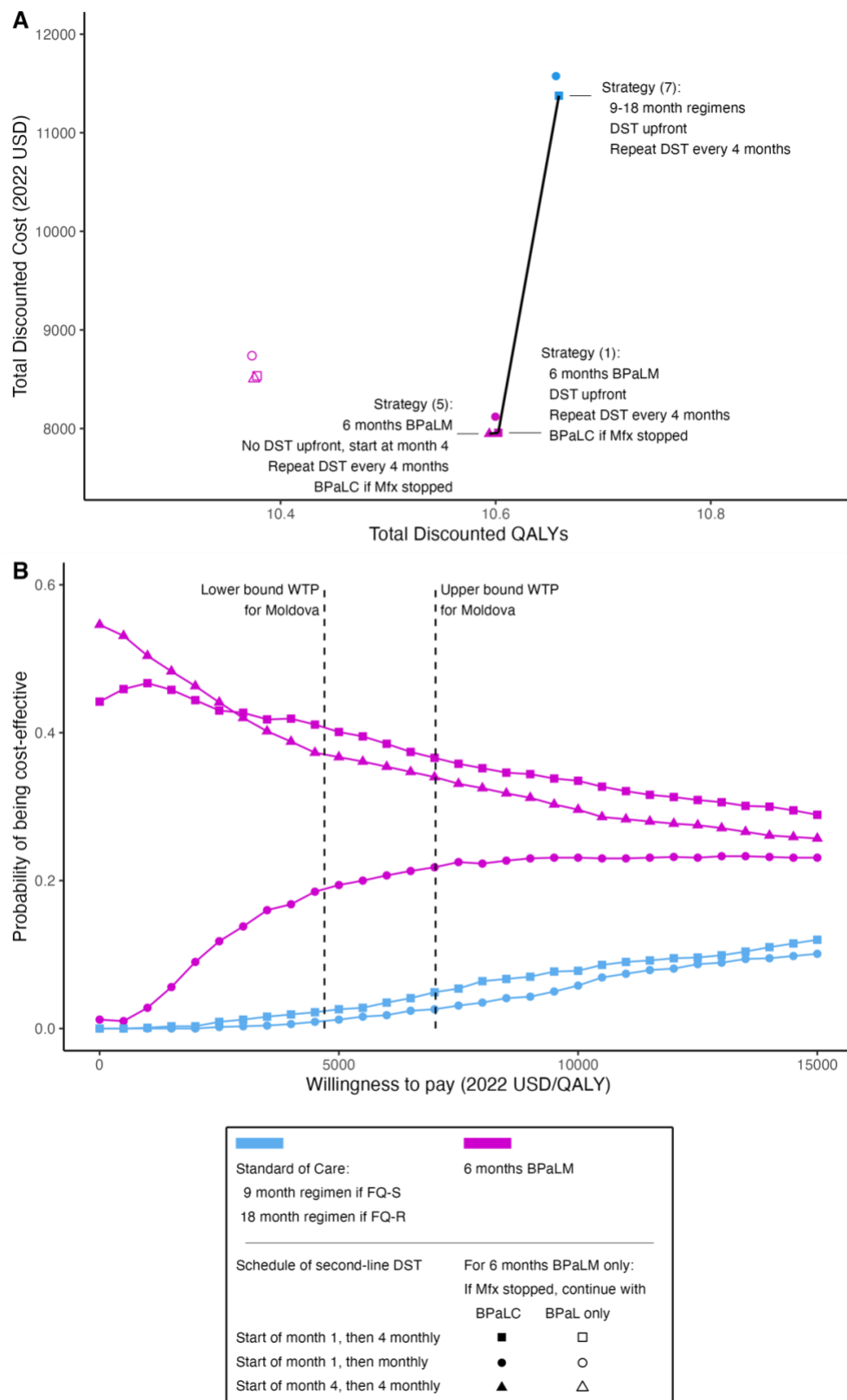
pretomanid, linezolid, moxifloxacin; DST – drug susceptibility test; FQ-S – fluoroquinolone susceptible; FQ-R – fluoroquinolone resistant; MGIT – mycobacterial growth indicator tube

TABLE 2. Costs, health impact and cost effectiveness of RR-TB treatment strategies.

| STRATEGY DESCRIPTION | | | | COST | | HEALTH IMPACT | | COST-EFFECTIVENESS | | | | |
|--------------------------|---|--|--|------------------------------------|----------------------------------|---------------------------------|--------------------------------|--|-------------------------------|--------------------------------------|-------------------------------|-------------------------------|
| Strategy Name | Alternative regimen if Mfx stopped (2022 Guidelines only) | 2 nd line DST at treatment initiation | Frequency of 2 nd line DST during ongoing treatment | Undiscounted Total Cost (2022 USD) | Discounted Total Cost (2022 USD) | Undiscounted QALYs | Discounted QALYs | Incremental Discounted Total Cost (2022 USD) | Incremental Discounted QALYs | Incremental Cost-effectiveness Ratio | NHB, lower bound WTP (QALYs) | NHB, upper bound WTP (QALYs) |
| 5) BPaLM-based | BPaLC | No | Every 4 months | 8176 (6245, 10379) | 7947 (6081, 10056) | 14.90 (13.03, 16.78) | 10.59 (9.48, 11.66) | -- | -- | -- | 8.90 (7.64, 10.03) | 9.46 (8.24, 10.55) |
| 1) 6 months BPaLM | BPaLC | Yes | Every 4 months | 8184 (6232, 10318) | 7957 (6076, 10035) | 14.91 (12.98, 16.81) | 10.60 (9.47, 11.69) | 10 (-135, 159) | 0.01 (-0.17, 0.19) | 1181 | 8.91 (7.71, 10.09) | 9.47 (8.28, 10.60) |
| 2) 6 months BPaLM | BPaLC | Yes | Monthly | 8353 (6371, 10539) | 8120 (6205, 10217) | 14.91 (12.99, 16.84) | 10.60 (9.46, 11.69) | -- | -- | Dominated | 8.87 (7.65, 10.04) | 9.44 (8.25, 10.56) |
| 6) 6 months BPaLM | BPaL only | No | Every 4 months | 8804 (6665, 11211) | 8506 (6470, 10772) | 14.56 (12.65, 16.41) | 10.38 (9.26, 11.43) | -- | -- | Dominated | 8.57 (7.30, 9.73) | 9.16 (7.93, 10.27) |
| 3) 6 months BPaLM | BPaL only | Yes | Every 4 months | 8832 (6733, 11295) | 8533 (6528, 10867) | 14.57 (12.67, 16.49) | 10.38 (9.29, 11.45) | -- | -- | Dominated | 8.56 (7.32, 9.73) | 9.16 (7.98, 10.29) |
| 4) 6 months BPaLM | BPaL only | Yes | Monthly | 9048 (6882, 11519) | 8738 (6673, 11053) | 14.56 (12.61, 16.41) | 10.37 (9.25, 11.43) | -- | -- | Dominated | 8.51 (7.25, 9.70) | 9.13 (7.87, 10.26) |
| 7) standard of care | N/A | Yes | Every 4 months | 11742 (9213, 14746) | 11376 (8929, 14294) | 14.99 (13.05, 16.80) | 10.66 (9.54, 11.65) | 3419 (1411, 5804) | 0.06 (-0.33, 0.46) | 60622 | 8.24 (7.04, 9.37) | 9.04 (7.86, 10.10) |
| 8) standard of care | N/A | Yes | Monthly | 11951 (9335, 14987) | 11575 (9076, 14521) | 14.99 (13.07, 16.75) | 10.66 (9.56, 11.64) | -- | -- | Dominated | 8.19 (7.03, 9.35) | 9.01 (7.86, 10.06) |

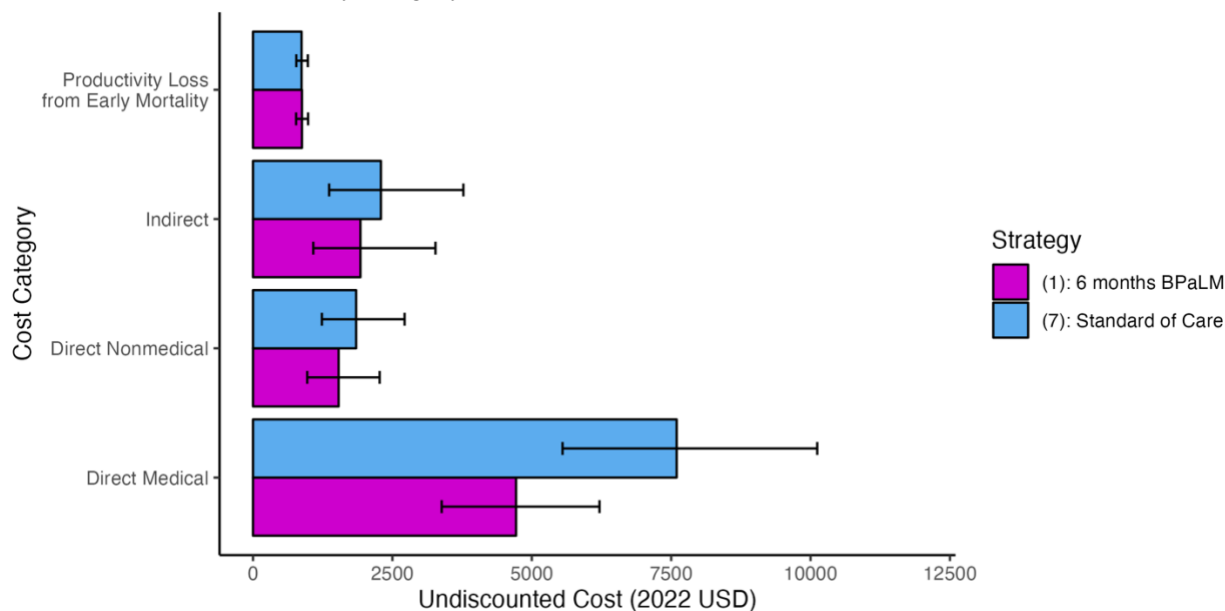
Strategies are listed in order of increasing Discounted Total Cost. NHB for each strategy is given, for lower and higher bounds of the willingness-to-pay for Moldova (Lower bound = 4,700 USD/QALY; Upper bound = 7,021 USD/QALY). Dominated strategies are indicated (i.e., those strategies that were both more costly and resulted in poorer health than at least one other strategy). For nondominated strategies (i.e., strategy numbers 1, 5, and 7), the cheapest (Strategy 5) is listed as the Comparator, and the incremental discounted total cost and incremental discounted QALYs were calculated relative to the next cheapest, nondominated strategy. The cost-effective strategy is highlighted in **bold** text, which is the strategy with the highest NHB; it is equivalently the strategy with the highest ICER than is still under the WTP threshold. Mean values are shown with accompanying 95% UIs in parentheses. Mfx – Moxifloxacin; NHB – Net Health Benefit; QALY – Quality-adjusted Life Year; UI – Uncertainty Interval; USD – United States Dollars; WTP – Willingness-to-Pay

FIGURE 1. Cost-effectiveness plane and acceptability curve



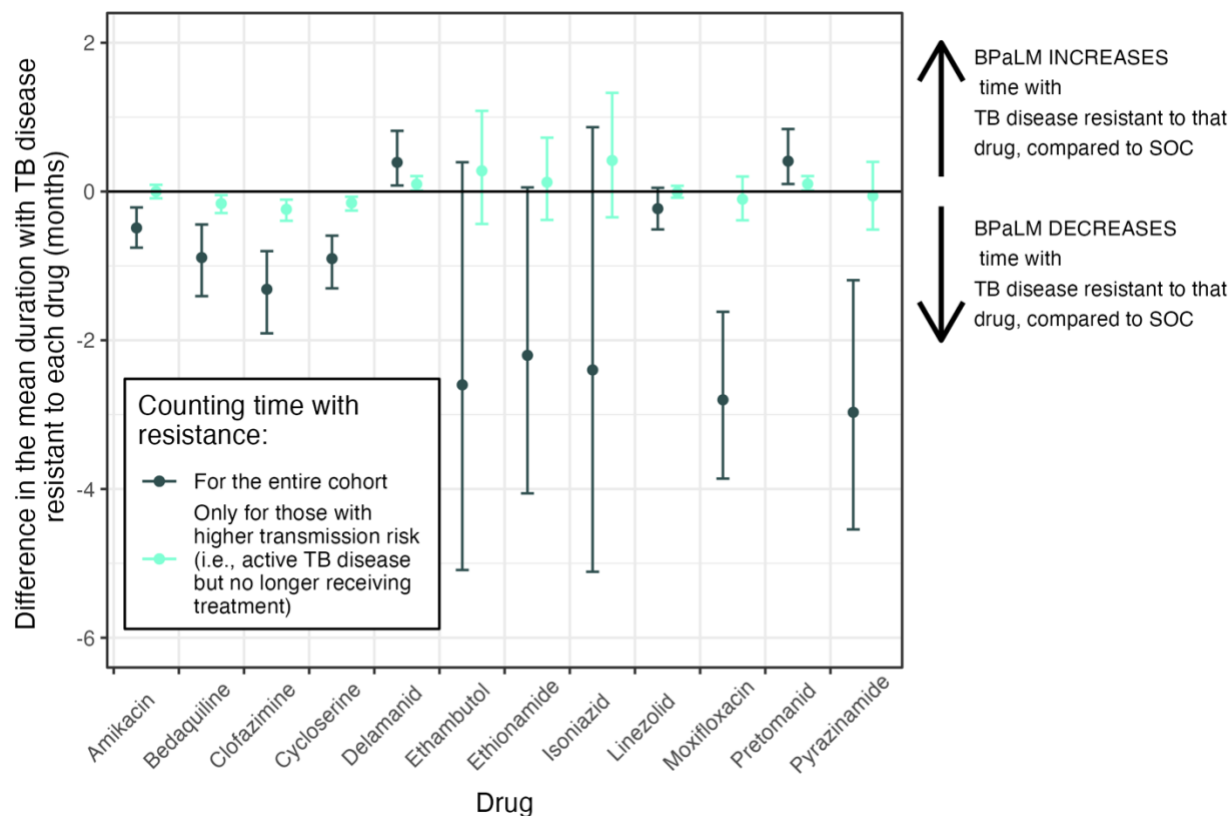
The cost-effectiveness plane (A) shows point estimates for the discounted total costs and discounted QALYs of each modeled strategy. These are calculated as the mean of all simulation runs (1000 second order Monte Carlo simulations, each with 10,000 individual patient simulations). The black lines connect nondominated strategies. Total Cost and QALYs are discounted by 3% per year. The cost-effectiveness acceptability curve (B) displays the probability that each modeled strategy is the cost-effective strategy, as a function of WTP. This is calculated as the proportion of 1,000 second-order Monte Carlo simulations where the respective strategy was optimal, given the value for WTP. Strategies were excluded if they were not cost-effective in any of the simulations (these were the three strategies where BPaL only was used if Mfx had to be stopped under a BPaLM regimen). Vertical dashed lines mark the adopted lower and upper bounds of the WTP thresholds for Moldova. BPaLM – bedaquiline, pretomanid, linezolid, moxifloxacin; Mfx – Moxifloxacin; QALY – Quality-adjusted Life Year; USD – United States Dollars; WTP – Willingness-to-Pay

FIGURE 2. Lifetime costs by category



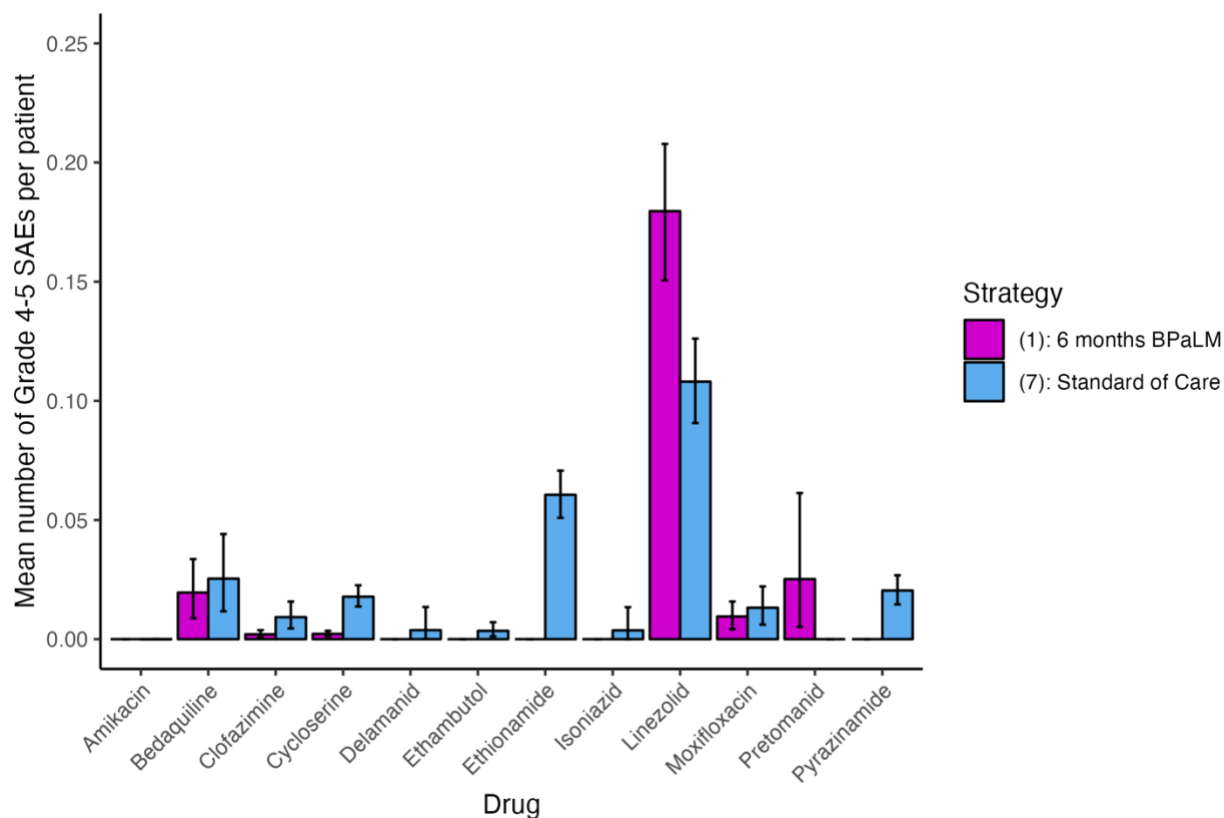
Undiscounted lifetime costs per individual in the cohort for Strategy (1) (6 months BPaLM, DST upfront, repeat DST every 4 months, BPaLC if Mfx stopped) as compared to Strategy (7) (standard of care 9-18 month regimens based on results of upfront DST, repeat DST every 4 months). We chose to compare these two strategies as they were the best-performing BPaLM-based and standard of care-based strategies, respectively. The bars show the mean model outcomes for each cost category, with error bars representing 95% UIs. BPaLM – bedaquiline, pretomanid, linezolid, moxifloxacin; UI – Uncertainty Interval; USD – United States Dollars

FIGURE 3. The impact of the BPaLM regimen on drug resistance



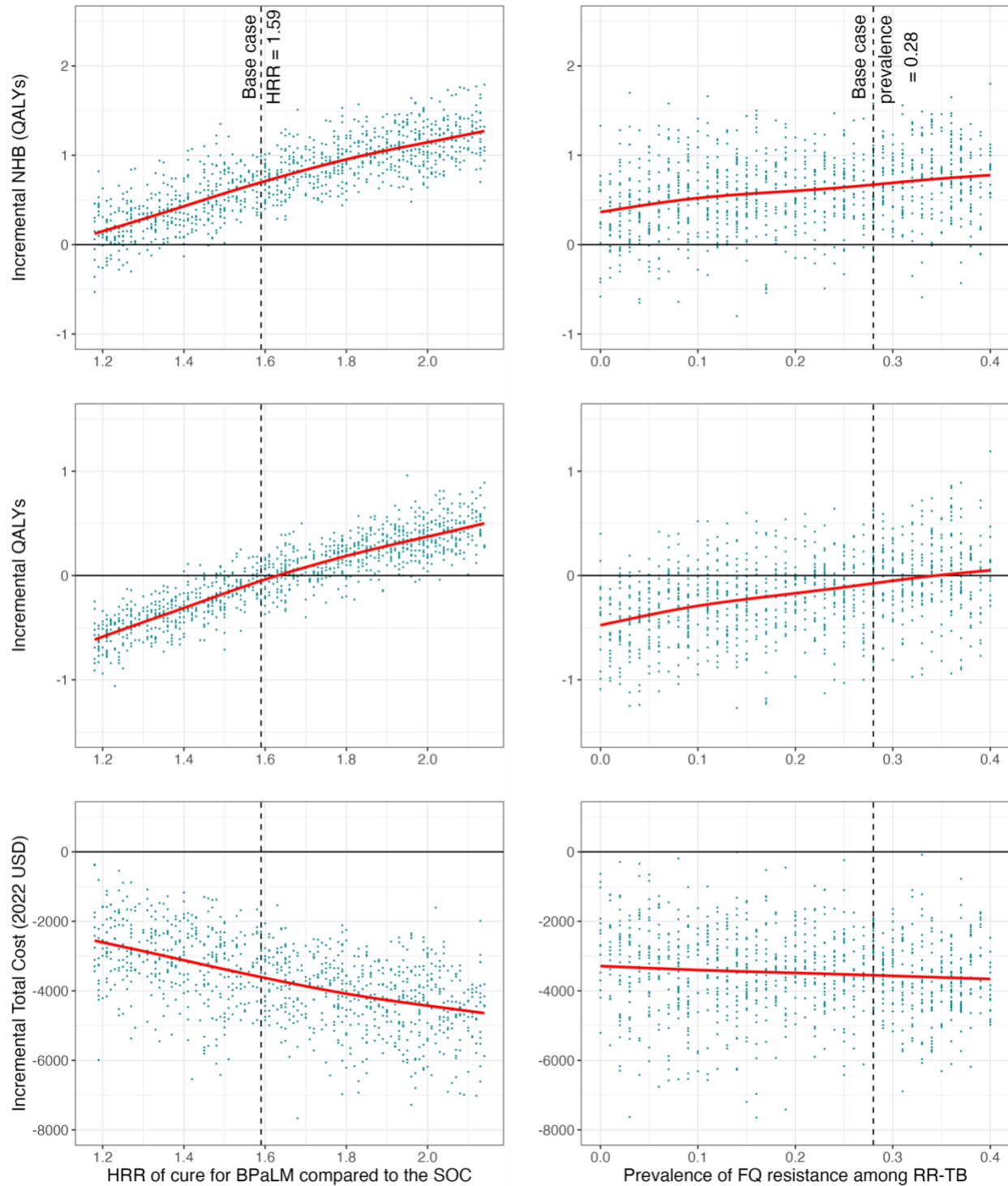
The difference in duration with TB disease with resistance is shown in months, for each of 12 anti-TB drugs, for Strategy (1) (6 months BPaLM, DST upfront, repeat DST every 4 months, BPaLC if Mfx stopped) as compared to Strategy (7) (standard of care 9-18 month regimens based on results of upfront DST, repeat DST every 4 months). We chose to compare these two strategies as they were the best-performing BPaLM-based and standard of care-based strategies, respectively. For each drug, two estimates are provided: counting time with resistance at any point until the individual is truly cured (dark green), and counting time with resistance only while an individual has TB disease but is not being treated (light green). Both estimates are provided per individual, averaged over the entire cohort initiating treatment. 95% UIs are shown by the accompanying error bars. BPaLM – bedaquiline, pretomanid, linezolid, moxifloxacin; SOC – standard of care; TB – Tuberculosis; UI – Uncertainty Interval

FIGURE 4. Severe Adverse Events



The mean number of Grade 4-5 Severe Adverse Events ever experienced to each of 12 anti-TB drugs is shown for Strategy (1) (6 months BPaLM, DST upfront, repeat DST every 4 months, BPaLC if Mfx stopped) as compared to Strategy (7) (standard of care 9-18 month regimens based on results of upfront DST, repeat DST every 4 months). We chose to compare these two strategies as they were the best-performing BPaLM-based and standard of care-based strategies, respectively. Estimates are provided per individual, averaged over the entire cohort initiating treatment. The mean estimate is shown by the bar, with 95% UIs represented as the error bars. BPaLM – bedaquiline, pretomanid, linezolid, moxifloxacin; SAE – Severe Adverse Event; TB – Tuberculosis; UI – Uncertainty Interval

FIGURE 5. Sensitivity analyses on the hazard rate ratio of cure and the prevalence of fluoroquinolone resistance



One-way sensitivity analyses exploring the implications of key model parameters, in terms of their effect on the incremental benefits and costs of Strategy (1) (6 months BPaLM, DST upfront, repeat DST every 4 months, BPaLC if Mfx stopped) as compared to Strategy (7) (standard of care 9-18 month regimens based

on results of upfront DST, repeat DST every 4 months). We chose to compare these two strategies as they were the best-performing BPaLM-based and standard of care-based strategies, respectively. In the left column, the HRR of cure for the BPaLM regimen compared to the standard of care is varied. In the right column, we vary the starting prevalence of fluoroquinolone resistance in the cohort (i.e., among all RR-TB). Each of the parameters is varied deterministically in the respective sensitivity analysis, with all other model parameters drawn as in the probabilistic sensitivity analysis. The outcomes quantified on the y-axis for each row of plots are (top to bottom): incremental NHB (calculated using discounted Total Costs and discounted QALYs at the lower bound WTP), incremental QALYs (undiscounted), and incremental Total Costs (undiscounted). The difference between the modeled outcomes under BPaLM and the standard of care is shown for 1,000 model runs, each an average of 10,000 individual patient simulations. The red line shows the trend as represented by regression of the y-axis variable on the x-axis variable, using a generalized additive model with cubic spline to obtain a restricted maximum likelihood within ggplot2.³³ The vertical dashed lines mark the base case assumptions for the mean of each of these model parameters. BPaLM – bedaquiline, pretomanid, linezolid, moxifloxacin; FQ – Fluoroquinolone; HRR – Hazard Rate Ratio; NHB – Net Health Benefit QALY – Quality-adjusted Life Year; RR-TB – Rifampicin-resistant tuberculosis

SUPPLEMENTAL INFORMATION

A. CHEERS 2022 Checklist

B. Additional Detail on Microsimulation Model

C. Tables S1-S3

| | |
|-----------|--|
| Table S1: | Model input parameters |
| Table S2: | Probability of loss to follow up by month of treatment |
| Table S3: | Life Years under each strategy |

D. Figures S1–S10

| | |
|-------------|---|
| Figure S1: | Schematic of the initial workup phase for standard of care strategies |
| Figure S2: | Markov state-transition diagram |
| Figure S3: | Genomic sequencing data exclusion criteria |
| Figure S4: | The rate of acquiring drug resistance |
| Figure S5: | Drug resistance at treatment initiation |
| Figure S6: | Assumptions on the classification of End of Treatment outcomes |
| Figure S7: | Sensitivity analyses on the main effect estimate and the prevalence of fluoroquinolone resistance for the outcome of Incremental Life Years |
| Figure S8: | Duration of TB disease with resistance to each drug |
| Figure S9: | Lifetime cumulative incidence of drug resistance |
| Figure S10: | Validating End of Treatment (EOT) outcomes |

E. Calculated Model Parameters

A. CHEERS 2022 Checklist

| Topic | No. | Item | Location where item is reported |
|--------------------------------------|-----|---|---|
| Title | | | |
| | 1 | Identify the study as an economic evaluation and specify the interventions being compared. | Title, Page 1 |
| Abstract | | | |
| | 2 | Provide a structured summary that highlights context, key methods, results, and alternative analyses. | Abstract, Page 3 |
| Introduction | | | |
| Background and objectives | 3 | Give the context for the study, the study question, and its practical relevance for decision making in policy or practice. | Introduction, Lines 2-44 |
| Methods | | | |
| Health economic analysis plan | 4 | Indicate whether a health economic analysis plan was developed and where available. | Not Applicable |
| Study population | 5 | Describe characteristics of the study population (such as age range, demographics, socioeconomic, or clinical characteristics). | Methods, Lines 22-31; Figure S5 |
| Setting and location | 6 | Provide relevant contextual information that may influence findings. | Introduction, Lines 42-44; Methods, Line 22 and Lines 103-107 |
| Comparators | 7 | Describe the interventions or strategies being compared and why chosen. | Methods, Lines 3-20; Table 1 |
| Perspective | 8 | State the perspective(s) adopted by the study and why chosen. | Methods, Lines 85-87 |
| Time horizon | 9 | State the time horizon for the study and why appropriate. | Methods, Line 34 |
| Discount rate | 10 | Report the discount rate(s) and reason chosen. | Methods, Lines 94-95 |

| Topic | No. | Item | Location where item is reported |
|--|------------|---|---|
| Selection of outcomes | 11 | Describe what outcomes were used as the measure(s) of benefit(s) and harm(s). | Methods, Lines 66-95 |
| Measurement of outcomes | 12 | Describe how outcomes used to capture benefit(s) and harm(s) were measured. | Methods, Lines 66-95; Supplement B; Table S1 |
| Valuation of outcomes | 13 | Describe the population and methods used to measure and value outcomes. | Methods Lines 66-68; Table S1 |
| Measurement and valuation of resources and costs | 14 | Describe how costs were valued. | Methods Lines 85-93; Table S1 |
| Currency, price date, and conversion | 15 | Report the dates of the estimated resource quantities and unit costs, plus the currency and year of conversion. | Methods, Lines 85-86; Table S1 |
| Rationale and description of model | 16 | If modelling is used, describe in detail and why used. Report if the model is publicly available and where it can be accessed. | Methods, Lines 34-63; Supplement B |
| Analytics and assumptions | 17 | Describe any methods for analysing or statistically transforming data, any extrapolation methods, and approaches for validating any model used. | Methods Lines 111-134; Supplement B; Supplement E |
| Characterising heterogeneity | 18 | Describe any methods used for estimating how the results of the study vary for subgroups. | Methods, Lines 124-26 |
| Characterising distributional effects | 19 | Describe how impacts are distributed across different individuals or adjustments made to reflect priority populations. | Not reported |
| Characterising uncertainty | 20 | Describe methods to characterise any sources of uncertainty in the analysis. | Methods Lines 115-126; Table S1, Supplement B |
| Approach to engagement with patients and others affected by the study | 21 | Describe any approaches to engage patients or service recipients, the general public, communities, or stakeholders (such as clinicians or payers) in the design of the study. | Not reported |
| Results | | | |
| Study parameters | 22 | Report all analytic inputs (such as values, ranges, references) including uncertainty or distributional assumptions. | Table S1; Table S2; Figure S4 |
| Summary of main results | 23 | Report the mean values for the main categories of costs and outcomes of interest and summarise them in the most appropriate overall measure. | Results, Lines 3-36 |

| Topic | No. Item | Location where item is reported |
|---|---|---|
| Effect of uncertainty | 24 Describe how uncertainty about analytic judgments, inputs, or projections affect findings. Report the effect of choice of discount rate and time horizon, if applicable. | Results, Lines 21-26; Figure 1B, Figure 5 |
| Effect of engagement with patients and others affected by the study | 25 Report on any difference patient/service recipient, general public, community, or stakeholder involvement made to the approach or findings of the study | Not reported |
| Discussion | | |
| Study findings, limitations, generalisability, and current knowledge | 26 Report key findings, limitations, ethical or equity considerations not captured, and how these could affect patients, policy, or practice. | Discussion |
| Other relevant information | | |
| Source of funding | 27 Describe how the study was funded and any role of the funder in the identification, design, conduct, and reporting of the analysis | End of manuscript |
| Conflicts of interest | 28 Report authors conflicts of interest according to journal or International Committee of Medical Journal Editors requirements. | End of manuscript |

1 **B. Additional Detail on Microsimulation Model**

2

3 *1. Markov Health States*

4 The model mechanisms included Markov health states and individual patient- and drug-level trackers.

5 The Markov health states were:

6

7 (1): Receiving TB treatment

8 (2): TB disease not receiving treatment

9 (3): Cured post-treatment

10 (4): Dead

11

12 *2. Transitions between Markov Health States*

13 The Markov cycle length was one month. All individuals started in state (1), and stayed there until the
14 earliest of: death, LTFU, or discharge. While in state (1), an individual could be cured of their TB disease.

15 We assumed that all truly cured patients were correctly identified as such; these individuals were

16 discharged after the completion of their planned regimen and transitioned to state (3). When those

17 individuals not truly cured were assessed at the end of treatment, 90% (Table S1) received a 6 month

18 treatment extension, and the remainder were incorrectly assessed to have successfully completed

19 treatment and were discharged. Patients receiving treatment extensions were assessed in the same way at

20 the end of each extension. Individuals discharged before true cure were moved into state (2) and faced a

21 monthly probability of relapsing and returning to treatment.

22 Individuals also faced a risk each month of becoming LTFU; if this occurred before they were cured, they

23 transitioned to state (2) with a monthly probability of returning to treatment, and if they had already been

24 truly cured they moved into state (3). Self-cure was possible from state (2), at a lower rate than cure on

25 treatment. All simulated individuals faced a risk of death each month, with the mortality rate lower

26 following cure. Prior to cure, the rate of death was higher for those who had stopped treatment. Quality of
27 life was lowest at the start of treatment, and improved as the treatment course progressed, until it reached
28 the maximum value upon true cure.

29

30 *3. Individual patient- and drug-level trackers*

31 For each simulated individual we tracked whether they had been truly cured during treatment (i.e., before
32 they reached the end of the prescribed regimen and moved into state (3)), their current drug regimen, the
33 duration of treatment with each drug, whether the strain of *M. tuberculosis* was resistant to each drug, the
34 duration of resistance to each drug since treatment initiation, the results of the most recent DST
35 performed, whether they had experienced a SAE to each drug, and the observed EOT outcomes (Figure
36 S6). This set of trackers collectively informed the event probabilities and health state utility weights
37 (Table S1). In each month, these trackers were also used to calculate the number of effective drugs, by
38 matching the drugs being used in the treatment regimen with the (true) resistance profile to that drug. This
39 variable influenced the probability of cure and the probability that each individual's strain of *M.*
40 *tuberculosis* would acquire resistance to any new drugs (Table S1, Figure S4). Differential adherence by
41 strategy was not modeled explicitly, and we assumed that the effects of imperfect adherence were
42 reflected in published effectiveness estimates.

43

44 *4. Outcomes*

45 *4.1 Calculating Net Health Benefit*

46 NHB was calculated according to convention:²¹ total discounted costs were converted into QALYs of
47 equivalent value using the exchange rate of WTP for gains in health, itself measured in \$ per QALY.
48 These were then subtracted from the total discounted QALYs to produce NHB, measured in units of
49 QALYs.

50 *4.2 End of Treatment Outcomes*

51 We recorded the observed EOT outcome for each simulated individual in the model. We then validated
52 these modeled outcomes against data reported to the WHO from Moldova, presented separately for RR-
53 TB (i.e., MDR/RR-TB) overall and for the subset of patients with XDR-TB. In this analysis, the
54 definition of XDR-TB used is the older definition used by WHO,² meaning TB that is resistant to any
55 fluoroquinolone and to at least one of three second-line injectable drugs, in addition to isoniazid and
56 rifampicin. We used the older definition to allow validation of the modelled EOT outcomes against WHO
57 data. The classification structure for recording EOT outcomes in the model is shown in Figure S6, along
58 with our best interpretation of the EOT structure in the empirical data.

59

60 *5. Modeled events*

61 *5.1 Death*

62 Patients were exposed to a monthly risk of mortality, incorporating the risk from background causes and
63 disease-specific mortality from TB. The TB-specific mortality risk was highest for individuals with TB
64 disease that was not currently being treated. Treatment lowered the TB-specific mortality risk. After an
65 individual was cured, the TB-specific mortality risk decreased but was still greater than zero to account
66 for post-TB sequelae (Table S1).

67 *5.2 Cure*

68 For the first month of treatment and for untreated TB disease, an individual was allowed to self-cure. A
69 higher cure rate was assumed from month two of treatment onwards (conditional on the treatment strategy
70 and the number of effective drugs each month, as previously mentioned).

71 *5.3 Loss to follow-up (LTFU)*

72 Each month, an individual receiving treatment could become LTFU, with a decreasing monthly
73 probability over time (Table S2). Those LTFU before true cure entered the “2) TB Disease – no longer
74 receiving treatment” state and were allowed to subsequently recommence treatment. Those LTFU *after*
75 true cure, but while still receiving treatment, entered the “3) Cured post-treatment” state and did not
76 return to treatment. The probability of return to treatment is described in Table S1.

77 *5.4 Drug resistance acquisition*

78 The resistance status of each individual’s strain of *M. tuberculosis* to each drug was assumed to be binary
79 (susceptible or resistant). The probability of developing resistance in a given month to each drug was a
80 function of the number of effective drugs in the regimen. Conditional on the number of effective drugs,
81 the probability of acquiring resistance was independent and identically distributed for all drugs to which
82 *M. tuberculosis* was exposed in any month, with three exceptions: pretomanid resistance was assumed to
83 confer immediate delamanid resistance and vice versa,⁴⁰ bedaquiline resistance was assumed to confer
84 immediate clofazimine resistance (but not vice versa),⁴¹ and the rate of acquiring resistance to linezolid
85 was assumed to be half the rate as to other drugs.^{42,43}

86 We assumed that if an individual had resistance to a drug at a given time, the *M. tuberculosis* strain could
87 not later revert to being susceptible. While resistance status was tracked for all patients with TB disease
88 regardless of whether they were being treated, the probability of acquiring resistance fell to zero for all
89 drugs in the month following treatment cessation.

90 *5.5 Drug Susceptibility Testing*

91 Individuals received DST by MGIT for moxifloxacin and amikacin according to the frequency prescribed
92 by the strategy (Table 1). We assumed that individuals who had been truly cured would not be able to
93 produce an adequate sputum sample, and as such did not undergo DST. We also assumed full adherence
94 to the prescribed DST regimen. In the event of detecting new drug resistance, the respective drug was
95 discontinued for that individual with a lifetime contraindication, and was replaced immediately. The only

96 exception to this rule of replacement was for moxifloxacin under variations of the 6 months of BPaLM
97 strategy, where some strategies continued BPaL only, rather than replacing moxifloxacin (Table 1).
98 Sensitivity and specificity values for DST were estimated from the literature (Table S1).

99 *5.6 Severe Adverse Events (SAEs)*

100 We modeled a generalized severe (i.e., grade 4-5) treatment-related SAE, which we assumed took place
101 in any of the first three months of treatment with each drug, but not after. An SAE resulted in the
102 responsible drug being discontinued that month, with a lifelong contraindication and small lifelong
103 decrement to that individual's health-related quality of life (Table S1). Each additional SAE was assumed
104 to confer the same incremental reduction in quality of life and healthcare resource utilization.

105

106 *6. Missing Data*

107 In the genomic sequencing dataset, for observations with missing age ($n = 12$; 1.8%) we imputed the
108 mean age of the cohort (42 years). There was no missing drug resistance data.

109

110 *7. Probabilistic Sensitivity Analysis*

111 For each input parameter, distributions were fit to the published measure of dispersion (95% confidence
112 intervals or standard deviation) where available. Where there was no accompanying measure of
113 dispersion, we assumed a standard deviation equal to one third of the mean. Information on all
114 distributions is provided in Table S1.

115

116
117

C. TABLES S1–S3

TABLE S1. Model Input Parameters

| # | Parameter name | Point Estimate | Distribution | Source(s) | Notes |
|---------------------------|--|-----------------|--|---|--|
| TB NATURAL HISTORY | | | | | |
| 1 | 1 year probability of death from background causes | Varies with age | N/A | UN Population Division 2019. ⁴⁴ File MORT/15-1 Both Sexes. | Estimates for 2015-2020 period. Converted to monthly rates, assuming a constant mortality rate during each 1-year period. The 1 year probability of death is as follows: Age 18-20: 0.000413; age 20-25: 0.000559; age 25-30: 0.000841; age 30-35: 0.001294; age 35-40: 0.002320; age 40-45: 0.003268; age 45-50: 0.005827; age 50-55: 0.008702; age 55-60: 0.013162; age 60-65: 0.022045; age 65-70: 0.029006; age 70-75: 0.046571; age 75-80: 0.073896; age 80-85: 0.116146; age 85-90: 0.175700; age 90-95: 0.242534; age 95+: 0.330946 |
| 2 | Annual rate of death from untreated TB | 0.389 | Published point estimate and 95% CrI (0.335-0.449) is modeled as Lognormal distribution with mean - 0.9442 and s.d. 0.0763 | Ragonnet R, et al. Clin Infect Dis 2020 ⁴⁵ | This is applied to those not receiving treatment (i.e. those LTFU and those undetected failures). This estimate is for smear positive individuals, and for TB overall (not specifically for RR-TB). |
| 3 | Mortality rate ratio for those who are cured, compared to background mortality | 3.070 | Published point estimate and 95% CI (2.12, 4.45) is modeled as a Lognormal distribution with mean 1.122 and s.d. 0.1889 | Romanowski K., et al. Lancet Infect Dis 2019 ⁴⁶ | This is the estimate for pulmonary TB. We apply this as a mortality rate ratio, although in the study it is reported as a standardized mortality ratio (some of the constituent studies in the review had used hazard rates and some had used SMR). |

| # | Parameter name | Point Estimate | Distribution | Source(s) | Notes |
|-------------------------------------|--|----------------|--|---|---|
| 4 | Annual Self-cure rate | 0.231 | Published point estimate and 95% CrI (0.177-0.288) is approximated and modeled as a Lognormal distribution with mean -1.465 and s.d. 0.136 | Ragonnet R, et al. Clin Infect Dis 2020 ⁴⁵ | Applied to those not receiving treatment (i.e. those LTFU and those undetected failures) and the first two months of treatment. This estimate is for smear positive individuals, and for TB overall (not specifically for RR-TB). |
| TREATMENT-RELATED PARAMETERS | | | | | |
| 5 | Overall probability of all-cause death at the end of a 21 month WHO longer regimen, MDR only (excluding XDR) | 0.080 | Published point estimate and 95% CI (0.07-0.09) approximated and modeled by Beta distribution with mean 0.08 and s.d. 0.0051 | Bastos M. L., et al. 2017 ⁴⁷ | This estimate is from a large meta-analysis which included studies in high, middle and low income settings. The regimen duration was variable across studies but most used somewhere in the range 18-24 months. I assumed a 21 month-long regimen duration, using this estimate for end of treatment mortality to obtain a monthly MDR (here, excluding XDR) disease-specific mortality rate. Further detail below and additional Supplementary Material “Calculated Model Parameters”. |
| 6 | Overall probability of all-cause death at the end of TB treatment, XDR only | 0.21 | Published point estimate and 95% CI (0.18, 0.25) approximated and modeled by Beta distribution | Bastos M. L., et al. 2017 ⁴⁷ Table S3 | This estimate is from a large meta-analysis which included studies in high, middle and low income settings. The regimen duration was variable across studies but most used somewhere in the range 18-24 months. I assumed a 21 month-long regimen duration, using this estimate for end of treatment mortality to obtain a monthly XDR disease-specific mortality rate. Further detail below and additional Supplementary Material “Calculated Model Parameters”. |

| # | Parameter name | Point Estimate | Distribution | Source(s) | Notes |
|----|---|----------------|--|---|---|
| 7 | Monthly mortality rate among those who are not cured but on treatment, MDR-TB only (excluding XDR-TB) | 0.00536 | Assumed Beta(mean = 0.00536, s.d. = 0.00178) | Bastos M. L., et al. 2017 ⁴⁷ | See Supplementary Material E “Calculated Model Parameters”. |
| 8 | Monthly mortality rate among those who are not cured but on treatment, XDR-TB only | 0.01307 | Assumed Beta(mean = 0.01307, s.d. = 0.00436) | Bastos M. L., et al. 2017 ⁴⁷ | See Supplementary Material E “Calculated Model Parameters”. |
| 9 | Overall probability of observed success at the end of treatment for a fully effective longer regimen, MDR-TB only (excluding XDR) | 0.640 | Published point estimate and 95% CI (0.63-0.65) is modeled with Beta distribution, mean 0.64, s.d. 0.0051 | Bastos M. L., et al. 2017 ⁴⁷ | This estimate is used to parameterize the monthly cure rate for the WHO Guidelines strategy, and is adjusted to account for the discrepancy between true cure and observed success (see additional Supplementary Material “Calculated Model Parameters”). The published estimate is for individualized regimens and is for MDR-TB only (i.e., exclusive of XDR); we use this parameter specifically to inform the effectiveness of a fully effective regimen of 4 drugs (i.e. a regimen composed of 4 drugs to which the individual's TB strain is susceptible). We apply the estimate to all RR-TB, conditional on the number of effective drugs, and do not explicitly account for MDR vs XDR for this parameter. Note also that this review estimate is for longer regimens - regimens under 18 months were excluded here. The mid-range duration in this study was approximately 21 months, and we assume a constant rate of cure from months 2-21. |
| 10 | Overall probability of observed success at the end of treatment for a fully effective longer regimen, XDR-TB only | 0.26 | Published point estimate and 95% CI (0.23, 0.30) is approximated and modeled with Beta distribution, mean 0.26, s.d. ... | Bastos M. L., et al. 2017 ⁴⁷ | As above |

| # | Parameter name | Point Estimate | Distribution | Source(s) | Notes |
|----|--|-----------------------|---|---|---|
| 11 | Hazard Rate Ratio of cure for each effective drug in the regimen (relative to one fewer effective drugs) | 1.65 | Published point estimate and 95% CI (1.48, 1.84) modeled as a lognormal distribution with mean 0.5008 and s.d. 0.056 | Yuen, CM. et al. PLoS Med 2015 ⁴⁸ | This is applied up to a maximum of 4 drugs (i.e., there is no increase in the cure rate for 5 drugs compared to 4). The cure rate for the fully effective regimen is divided by this parameter, raised to the number of ineffective drugs. The referenced study examines the relationship between the number of effective drugs in the regimen and the outcome of time to sputum culture conversion. Here we assume that the same relationship holds for the rate of cure as for the rate of sputum culture conversion. |
| 12 | Hazard Rate Ratio of cure for the BPaLM regimen as compared to the SOC | 1.59 | Published point estimate (1.59) and 95% CI (1.18, 2.14) is used to model a Lognormal distribution (mean = 1.59, mean = 1.573). This gives a 95% UI of (1.18, 2.10). | Nyang'wa, B.-T. et al. 2022 ⁸ | The health outcomes did not provide sufficient numbers to characterize the difference in effectiveness. The HRR is the rate of culture conversion in the referenced study, but we use it here to parameterize the rate of cure, under the assumption that the rate ratio is constant for both outcomes of culture conversion and true cure. This assumption is explored in sensitivity analyses. |
| 13 | 1 month probability of loss to follow up | Varies. See Table S2. | See Note | Walker IF et al. Eur Respir J 2019 ⁴⁹ ; Figure 1 | See Table S2 for point estimates of the probability of LTFU each month. A measure of dispersion was calculated for each monthly probability by adopting a standard deviation 1/3 of the mean. To account for the dependence of the probability of LTFU between months, individuals had a percentile drawn from the uniform distribution (0, 1), and faced the probability each month corresponding to that percentile. This study excluded those who died from the analysis of LTFU, and it is not clear which direction this would bias the estimate: it could bias upwards the rate of LTFU as those who died are not counted in the denominator. On the other hand, the bias could be downward, as LTFU was also counted in Walker et al if encoded as missing data. |

| # | Parameter name | Point Estimate | Distribution | Source(s) | Notes |
|----------------------------|---|--|--------------|--|--|
| 14 | 1 month probability of relapse (i.e. being detected and returning to treatment) for those who have active TB but were observed as successes | Month 0-29 post treatment stopping: 0 Month 30-98: 0.0303 Month 99 on: 0 | None | Blondal et al. Int J Tub Lung Dis 2012 ⁵⁰ | Based on Figure 4 in the referenced paper, we assumed no relapse in the first 29 months after finishing treatment. We then assumed that there is a constant rate of return over months 30-98, and that the probability of return then drops to zero. |
| 15 | 1 month probability of being detected and returning to treatment for those who have been LTFU | 0.0303 | None | Blondal et al. Int J Tub Lung Dis 2012 ⁵⁰ | We assumed the same rate as for those observed as success in months 30-98 after leaving treatment, but that this rate of return applies from the first month. |
| 16 | Probability of being correctly identified as a failure, among those not truly cured, at the end of each treatment cycle | 0.90 | None | Derived from other estimates | See Supplementary Material E “Calculated Model Parameters”. |
| ACQUIRED RESISTANCE | | | | | |

| # | Parameter name | Point Estimate | Distribution | Source(s) | Notes |
|----|---|----------------|---|---|---|
| 17 | 6 month probability of acquiring resistance to a new drug, conditional on starting with a fully effective regimen | 0.008 | Published point estimate and 95% CI (0.005, 0.01) modeled by Beta distribution with mean 0.008 and s.d. 0.0015 | Lew W. et al. Annals Intern Med 2008. ⁵¹ | A “fully effective” regimen refers to four drugs to which the strain of <i>M. tuberculosis</i> is susceptible. The referenced meta-analysis was performed for first-line 6 month TB regimens (HRZE), and so we rely on the assumption that the acquisition of resistance to an additional drug occurs in the same fashion, regardless of the drugs being used. We use the published estimate to produce a monthly rate of resistance acquisition, assuming that a constant rate of resistance acquisition occurs over these 6 months. |
| 18 | 6 month probability of acquiring resistance to a new drug, conditional on starting with 3 effective drugs. | 0.060 | Published point estimate and 95% CI (0.04, 0.08) approximated and modeled by Beta distribution with mean 0.06 and s.d. 0.0102 | Lew W. et al. Annals Intern Med 2008. ⁵¹ | In the paper this was for strains with “single drug resistance”, which did not necessarily line up with our definition of a fully effective regimen consisting of four drugs. See also the parameter above. |
| 19 | Increase in the rate per month of resistance acquisition per month for 2 effective drugs, compared to 3. | 0.009 | Assumed Lognormal($\mu = -4.7632$, $\sigma = 0.3246$) which gives a 95% uncertainty interval of (0.005, 0.016) | Lew W. et al. Annals Intern Med 2008. ⁵¹ | This is calculated using the same difference in risk as between the rate of resistance acquisition with three effective drugs as compared to four. |

| # | Parameter name | Point Estimate | Distribution | Source(s) | Notes |
|------------------------------|--|----------------|--|---|---|
| 20 | 6 month probability of acquiring resistance to a new drug, conditional on starting with 2 effective drugs | 0.109 | Derived from above | Derived from above | This is calculated using the above parameters. In Lew et al., ⁵¹ the authors do report an estimate for a parameter <i>similar</i> to this one: the probability of acquired resistance to a new drug for those starting with a strain that is resistant to at least 2 of the drugs in the regimen. As we explicitly model the exact number of effective drugs at any given time, we make this a separate parameter for resistance to exactly two drugs. As a form of validity check, this estimate does fall within the confidence interval for this estimate in their paper (point estimate 0.14 with 95% CI (0.09, 0.2)), and it would make sense for it to be at the lower end of the CI, as we are not including those with existing resistance to three drugs. |
| 21 | 1 month probability of acquiring resistance to a new drug, conditional on starting with ONE effective drug | 0.150 | Beta(11,62) | Bulletin WHO, 1960 ⁵² | The referenced paper (see their Table 11) investigated the acquired resistance with three different isoniazid-only regimens. I used the standard dose Isoniazid regimen (H) but I can also change to the high-dose (HI-1 or HI-2). The authors report the number of culture positive specimens each month after treatment, and the proportion of those that are resistant to isoniazid. We have applied the first-month proportion of resistant isolates, that being 11 of 73, for each month in this monotherapy state. At this early stage in treatment, these 73 were out of a total 83 patients with a culture result. Beyond this point, many patients have negative cultures, which is at least in some part because they have been successfully treated. |
| SEVERE ADVERSE EVENTS | | | | | |
| 22 | Probability of SAE due to pyrazinamide during treatment | 0.028 | Beta (56,1967). [95% CI (0.021,0.037)] | Bastos M. L., et al. 2017 Table 5 ⁴⁷ | We assume that this applies to the first three months on treatment only. Converted to a one month probability in the model. |

| # | Parameter name | Point Estimate | Distribution | Source(s) | Notes |
|----|---|----------------|--|--|--|
| 23 | Probability of SAE due to ethambutol during treatment | 0.005 | Beta(6, 1319) [95% CI (0.002,0.011)] | Bastos M. L., et al. 2017 Table 5 ⁴⁷ | As for pyrazinamide |
| 24 | Probability of SAE due to amikacin during treatment | 0.073 | Beta(184,2354), [95% CI (0.062,0.084)] | Bastos M. L., et al. 2017 Table 5 ⁴⁷ | As for pyrazinamide. Estimate is for injectables as a whole, here it is applied for amikacin. |
| 25 | Probability of SAE due to moxifloxacin during treatment | 0.012 | Beta(10,817), [95% CI (0.006,0.024)] | Bastos M. L., et al. 2017 Table 5 ⁴⁷ | As for pyrazinamide |
| 26 | Probability of SAE due to thiamide during treatment | 0.082 | Beta(173,1933), [95% CI (0.07,0.096)] | Bastos M. L., et al. 2017 Table 5 ⁴⁷ | As for pyrazinamide. This estimate is applied in the model for ethionamide. |
| 27 | Probability of SAE due to cycloserine during treatment | 0.045 | Beta(96,2044), [95% CI (0.036,0.055)] | Bastos M. L., et al. 2017 Table 5 ⁴⁷ | As for pyrazinamide |
| 28 | Probability of SAE due to linezolid during treatment | 0.179 | Beta(140, 643) | Lan Z., et al. Lancet Resp Med 2020. ⁵³ | We use the fixed effects estimates from the referenced paper, which correspond to a Beta distribution using the total pooled numbers of SAE and non-SAE. Applied to first three months on treatment only (by assumption). Converted to a one month probability in the model. |
| 29 | Probability of SAE due to bedaquiline during treatment | 0.019 | Beta(9, 455) | Lan Z., et al. Lancet Resp Med 2020. ⁵³ | As for linezolid |

| # | Parameter name | Point Estimate | Distribution | Source(s) | Notes |
|--|--|----------------|----------------|--|---|
| 30 | Probability of SAE due to clofazimine during treatment | 0.007 | Beta(12, 1700) | Lan Z., et al. Lancet Resp Med 2020. ⁵³ | As for linezolid |
| 31 | Probability of SAE due to isoniazid during treatment | 0.005 | Beta(1,199) | Assumption | Applied to first three months on treatment only (by assumption). Converted to a one month probability in the model. |
| 32 | Probability of SAE due to pretomanid during treatment | 0.025 | Beta(3, 119) | Gils et al., 2022 ⁵⁴ | Applied to first three months on treatment only (by assumption). Converted to a one month probability in the model. This systematic review presents some findings for adverse events from pretomanid monotherapy in early studies. These did not report Grade 3-5 Severe Adverse Events, but rather “Serious” Adverse Events, and we use those numbers here. We pooled the simple number of serious adverse events (n=3), and divided this by the numbers of participants across those trial arms (n=122) to provide the estimate. |
| 33 | Probability of SAE due to delamanid during treatment | 0.008 | Beta(1,120) | Borisov S., et al. Eur Resp J 2019. ⁵⁵ | Applied to first three months on treatment only (by assumption). Converted to a one month probability in the model. |
| HEALTHCARE RESOURCE UTILIZATION | | | | | |
| 34 | Number of inpatient days per typical SAE | 2 | N/A | Assumption | We assume this inpatient stay takes place at a secondary hospital (to align with WHO-CHOICE cost estimates). While this would differ based on the type of SAE, this assumption is broadly in line with follow-up documented by Schnippel and colleagues. ⁵⁶ |

| # | Parameter name | Point Estimate | Distribution | Source(s) | Notes |
|------------------------|---|----------------|--|---|--|
| 35 | Number of outpatient visits per typical SAE | 2 | N/A | Assumption | We assume these visits take place at a secondary hospital (to align with WHO-CHOICE cost estimates). While this would differ based on the type of SAE, this assumption is broadly in line with frequencies documented by Schnippel and colleagues. ⁵⁶ |
| UTILITY WEIGHTS | | | | | |
| 36 | Utility weight at treatment baseline (also applied to relapse and those LTFU) | 0.750 | Published point estimate and 95% CI (0.66, 0.83) –modeled as Beta with point estimate as mean and s.d. 0.046 | Bauer M., et al. Qual Life Res 2015 ⁵⁷ | This estimate is from Standard Gamble assessment from participants from Canada. We use the adjusted estimate from the referenced study (in models where the differences between TB group and non-TB control group were controlled for various factors). While we are not comparing TB to non-TB controls, this covariate adjustment may account for changes in the population over time, which helps ensure that the utility weights applied in the model are internally consistent. The estimates from the referenced paper specifically excluded MDR-TB patients, but this is unlikely to affect the differences between our modeled strategies. |
| 37 | Utility weight at 1 month of treatment | 0.900 | Published point estimate and 95% CI (0.81, 0.99) modeled as Beta with point estimate as mean and s.d. 0.046 | Bauer M., et al. Qual Life Res 2015 ⁵⁷ | As above |
| 38 | Utility weight at 2 months of treatment | 0.890 | Published point estimate and 95% CI (0.79, 0.98) modeled as Beta with point estimate as mean and s.d. 0.051 | Bauer M., et al. Qual Life Res 2015 ⁵⁷ | As above |

| # | Parameter name | Point Estimate | Distribution | Source(s) | Notes |
|----|---|----------------|---|---|--|
| 39 | Utility weight at 6 months of treatment | 0.920 | Published point estimate and 95% CI (0.83, 1.00) modeled as Beta with point estimate as mean and s.d. 0.046 | Bauer M., et al. Qual Life Res 2015 ⁵⁷ | As above |
| 40 | Utility weight at 9 months of treatment | 0.970 | Published point estimate and 95% CI (0.89, 1.00) modeled as Beta with point estimate as mean and s.d. 0.041 | Bauer M., et al. Qual Life Res 2015 ⁵⁷ | As above |
| 41 | Utility weight at 12 months of treatment (also applied to all those who have apparent success as soon as treatment regimen finished, if earlier than 12 months) | 1.000 | Published point estimate and 95% CI (0.92, 1.00) modeled as Beta with mean of 0.99 and s.d. 0.02 | Bauer M., et al. Qual Life Res 2015 ⁵⁷ | As above |
| 42 | Decrease in utility for severe adverse event | 0.056 | Published point estimate and S.E.M (0.006) modeled as Beta | Takahara M, et al. Acta Diabetologica 2019. ⁵⁸ | While the above utility weights are likely to incorporate some element of disutility from treatment toxicity, we sought to capture this for different drugs and so we model an explicit decrement in utility for each SAE experienced. The decrement is assumed to last lifelong, and is modeled as a simple decrement in utility, subtracted from the utility weight experienced conditional on the TB disease course as described above. The estimate from the referenced study is for symptomatic peripheral neuropathy among diabetic patients from participants in Japan, and as such may approximate SAE from drug-induced neuropathy, which we assume here carries the consequences of a typical SAE in the model (in terms of both the severity of its effect on quality of life, and the length of this decrement). |

| # | Parameter name | Point Estimate | Distribution | Source(s) | Notes |
|--|---|----------------|--|--|---|
| COSTS (2022 USD unless otherwise specified) | | | | | |
| 43 | Monthly cost of treating MDR-TB, first phase (first 2 months) | 390.12 | Assumed Gamma (mean = 390.12, s.d. = 130.04) | Chikovani I., et al. Int J Tuberc Lung Dis 2021. Table 7. ⁵⁹ | From the referenced study we adopt the top-down estimates for the public sector. Excludes drugs and DST. Includes inpatient services as routine for the first 2 months of treatment in Georgia. Updated from 2018 GEL to 2022 USD using CPI and exchange rates from the World Bank. |
| 44 | Monthly cost of treating MDR-TB, second phase (month 3 onwards) | 119.35 | Assumed Gamma (mean = 119.35, s.d. = 39.78) | Chikovani I., et al. Int J Tuberc Lung Dis 2021. Table 7. ⁵⁹ | Top-down estimates for public sector (private sector also provided). Excludes drugs, DST and inpatient services (these are included separately). Updated from 2018 GEL to 2022 USD using CPI and exchange rates from the World Bank. |
| 45 | Cost of MGIT | 20.37 | Assumed Gamma(mean = 20.37, s.d. = 6.79) | Cates L., et al. Int J Tub Lung Dis 2020. Table 1. ⁶⁰ | Updated from 2018 USD to 2022 USD using and exchange rates, and the CPI for Moldova, from the World Bank. |
| 46 | Cost of Xpert MTB/RIF | 32.57 | Assumed Gamma(mean = 32.57, s.d. = 10.86) | Cates L., et al. Int J Tub Lung Dis 2020. Table 1. ⁶⁰ | Updated from 2018 USD to 2022 USD using and exchange rates, and the CPI for Moldova, from the World Bank. |
| 47 | Cost of second-line phenotypic DST | 51.29 | Assumed Gamma(mean = 51.29, s.d. = 17.10) | Cates L., et al. Int J Tub Lung Dis 2020. Table 1. ⁶⁰ | Updated from 2018 USD to 2022 USD using and exchange rates, and the CPI for Moldova, from the World Bank. |
| 48 | Amikacin treatment (one month) | 35.72 | Assumed Gamma(mean = 35.72, s.d. = 11.91) | Stop TB Partnership Global Drug Facility Medicines Catalog. ⁹ | 1000mg once daily (an intensive phase daily dose of 15mg/kg for a 65kg patient) |
| 49 | Bedaquiline treatment (first month) | 126.70 | Assumed Gamma(mean = 126.7, s.d. = 42.23) | Stop TB Partnership Global Drug Facility Medicines Catalog. ⁹ | 400mg once daily for first 2 weeks, then 200mg 3x/week 200mg 3x/week |

| # | Parameter name | Point Estimate | Distribution | Source(s) | Notes |
|----|--|----------------|---|--|---|
| 50 | Bedaquiline treatment (subsequent month) | 47.12 | Assumed Gamma(mean = 47.12, s.d. = 15.71) | Stop TB Partnership Global Drug Facility Medicines Catalog. ⁹ | 200mg 3x/week |
| 51 | Clofazimine treatment (one month) | 19.89 | Assumed Gamma(mean = 19.89, s.d. = 6.63) | Stop TB Partnership Global Drug Facility Medicines Catalog. ⁹ | 100mg once daily |
| 52 | Cycloserine treatment (first month) | 21.95 | Assumed Gamma(mean = 21.95, s.d. = 7.32) | Stop TB Partnership Global Drug Facility Medicines Catalog. ⁹ | 250mg twice daily for first 2 weeks, then 500mg twice daily |
| 53 | Cycloserine treatment (subsequent month) | 28.52 | Assumed Gamma(mean = 28.52, s.d. = 9.51) | Stop TB Partnership Global Drug Facility Medicines Catalog. ⁹ | 500mg twice daily |
| 54 | Delamanid treatment (one month) | 307.62 | Assumed Gamma(mean = 307.62, s.d. = 102.54) | Stop TB Partnership Global Drug Facility Medicines Catalog. ⁹ | 100mg twice daily |
| 55 | Ethambutol treatment (one month) | 3.35 | Assumed Gamma(mean = 3.35, s.d. = 1.12) | Stop TB Partnership Global Drug Facility Medicines Catalog. ⁹ | 1200mg once daily (Medscape recommended dose for 56-75 kg patient). ⁶¹ |
| 56 | Ethionamide treatment (one month) | 11.16 | Assumed Gamma(mean = 11.16, s.d. = 3.72) | Stop TB Partnership Global Drug Facility Medicines Catalog. ⁹ | 500mg twice daily (approximately 15mg/kg for 65kg patient) |

| # | Parameter name | Point Estimate | Distribution | Source(s) | Notes |
|----|--|------------------|--|--|--|
| 57 | Isoniazid treatment (one month) | 0.57 | Assumed Gamma(mean = 0.57, s.d. = 0.19) | Stop TB Partnership Global Drug Facility Medicines Catalog. ⁹ | 300mg once daily |
| 58 | Linezolid treatment (one month) | 22.44 | Assumed Gamma(mean = 22.44, s.d. = 7.48) | Stop TB Partnership Global Drug Facility Medicines Catalog. ⁹ | 600mg twice daily |
| 59 | Moxifloxacin treatment (one month) | 4.86 | Assumed Gamma(mean = 4.86, s.d. = 1.62) | Stop TB Partnership Global Drug Facility Medicines Catalog. ⁹ | 400mg once daily |
| 60 | Pretomanid treatment (one month) | 60.80 | Assumed Gamma(mean = 60.8, s.d. = 20.27) | Stop TB Partnership Global Drug Facility Medicines Catalog. ⁹ | 200mg once daily. Not currently included in the model but including here in case we want to simulate a regimen using Pretomanid instead of delamanid. |
| 61 | Pyrazinamide treatment (one month) | 1.86 | Assumed Gamma(mean = 1.86, s.d. = 0.62) | Stop TB Partnership Global Drug Facility Medicines Catalog. ⁹ | 1500mg once daily (epocrates recommended dose for patient 56-75kg). ⁶² |
| 62 | Cost per inpatient bed day | 92.71 (2018 GEL) | Gamma(mean = 92.71, s.d. = 7.83) | Value TB Dataset ⁶³ | MDR-specific estimate for an urban tertiary hospital. Converted to 2022 USD in model. |
| 63 | Cost per outpatient visit | 6.49 (2018 GEL) | Gamma(mean = 6.49, s.d. = 1.21) | Value TB Dataset ⁶³ | Estimate for adherence support visit for an urban tertiary hospital. Converted to 2022 USD in model. |
| 64 | Direct nonmedical costs of receiving RR-TB treatment | 2044.46 | Simulated from bootstrapped empirical estimates with mean = 2044.46, 95% CI (1354.06, 2999.25) | Allison Portnoy (personal communication) | This is applied to all individuals who are undergoing TB treatment. A value is drawn from this distribution – which is for an entire treatment episode – and then converted to a monthly cost for each month with TB disease, assuming the estimate is for 18 months of TB treatment in Moldova. |

| # | Parameter name | Point Estimate | Distribution | Source(s) | Notes |
|----|--|-----------------|--|--|---|
| 65 | Indirect cost of RR-TB | 2301.13 | Simulated from bootstrapped empirical estimates with mean = 2301.13, 95% CI (1359.23, 3744.06) | Allison Portnoy (personal communication) | This is applied to all individuals who have TB disease, whether they are receiving treatment or not, and also to those truly cured but who are yet to complete the treatment course. A value is drawn from this distribution – which is for an entire treatment episode – and then converted to a monthly cost for each month with TB disease, assuming the estimate is for 18 months of TB treatment in Moldova. |
| 66 | GDP per capita per year, Moldova (2022 USD) | 5529 | N/A | World Bank national accounts data ³⁸ | This is the GDP per capita for Moldova estimated using current prices. The parameter does not feature in the base case analysis but is included in scenario analysis, where the proportion spent on consumption (below) is subtracted out, and 1/12 of the remaining value is applied each month to everyone who dies, from the point of death, until they reach Moldova's life expectancy. |
| 67 | Final consumption expenditure, as a proportion of GDP (2021) | 0.987 | N/A | World Bank national accounts data ³⁸ | Assumed same value for 2022 as for 2021. As mentioned above, the complement of this number (0.013) is multiplied by the monthly GDP of Moldova to provide the cost per month of premature death (i.e. postfatal productivity loss). |
| 68 | Cost of conducting tracing for individuals LTFU | 4.96 (2018 GEL) | Gamma (mean = 4.96, s.d. = 1.91) | Value TB Dataset ⁶³ | We assume this cost is incurred once upon the event of LTFU. The referenced estimate is for community-based LTFU tracing over the phone. Converted to 2022 USD in model. |
| 69 | Life Expectancy, Moldova | 71.2 years | N/A | UN Data World Population Prospects ⁶⁴ | Estimate for 2021 for individuals aged 42, the average age of the cohort. Used to calculate productivity losses for all those who die prior to this age in scenario analysis only. |

| # | Parameter name | Point Estimate | Distribution | Source(s) | Notes |
|----|--|---|--------------|---|--|
| 70 | GDP Deflator Indices | Moldova: 100 (2010), 108.2 (2011), 120.8 (2013), 140.7 (2015), 158.0 (2017), 181.2 (2020), 187.2 (2021), 193.2 (2022)*; Georgia: 116.19 (2018), 131.12 (2020), 144.6 (2021), 158.1 (2022)* | N/A | World Bank GDP Deflator. ³⁸ | Applied to account for inflation in costs. *2022 values are not yet available, and were calculated under the assumption that GDP deflator changed by the same amount as between 2020 and 2021. |
| 71 | US Dollar to Moldovan Leu (USD/MDL) market exchange rates | 13.84 (2014), 16.79 (2018), 17.33 (2020), 18.78 (2022) | N/A | Xe.com ⁶⁵ | Annual mean calculated by averaging monthly values. |
| 72 | US Dollar to Georgian Lari (USD/GEL) market exchange rates | 2.53 (2018), 3.09 (2020), 2.95 (2022) | N/A | Xe.com ⁶⁵ | Annual mean calculated by averaging monthly values. |
| 73 | US Dollar to Moldovan Leu (USD/MDL) PPP exchange rate | 2.558 (2011), 3.217 (2017) | N/A | World Bank International Comparisons Project. ⁶⁶ | Estimates for “Actual Health” used as opposed to GDP overall. |

| # | Parameter name | Point Estimate | Distribution | Source(s) | Notes |
|-----------------------------|--|---|--------------|---|--|
| 74 | US Dollar to Georgian Lari (USD/GEL) PPP exchange rate | 0.413 (2011), 0.461 (2017) | N/A | World Bank International Comparisons Project. ⁶⁶ | Estimates for “Actual Health” used as opposed to GDP overall. |
| 75 | Willingness-to-pay for improvements in health (2015 USD) | Lower estimate: 85% GDP per capita Upper estimate: 127% GDP per capita | N/A | Ochalek et al., 2018 ²³ | Applied to 2022 GDP per capita, providing a lower estimate of 4699; upper estimate 7021 in 2022 USD. |
| TEST CHARACTERISTICS | | | | | |
| 76 | MGIT DST Sensitivity for amikacin resistance | 87.5% | Beta(7,1) | Tekin K., et al. 2017. ⁶⁷ | Estimate for amikacin. 6 resistant cases were identified using the gold standard. All were correctly identified by MGIT. These values were used to update a Beta(1,1) prior. In the paper the reported specificity (from a frequentist perspective) was 100%, but that is lower here given the model of uncertainty adopted. |
| 77 | MGIT DST Specificity for amikacin resistance | 97.62% | Beta(41,1) | Tekin K., et al. 2017. ⁶⁷ | Estimate for amikacin. 40 susceptible cases were identified using the gold standard. All were correctly identified by MGIT. These values used to update a Beta(1,1) prior. In the paper the reported specificity (from a frequentist perspective) was 100%, but that is lower here given the model of uncertainty adopted. |
| 78 | MGIT DST Sensitivity for fluoroquinolone resistance | 77.78% | Beta(20,1) | Devasia R. A., et al. 2009 ⁶⁸ | Of 797 isolates, 19 resistant cases were identified using the gold standard. Of them, all 19 were correctly identified by MGIT. These values used to update a Beta(1,1) prior. |

| # | Parameter name | Point Estimate | Distribution | Source(s) | Notes |
|----|--|----------------|--------------|--|---|
| 79 | MGIT DST Specificity for fluoroquinolones resistance | 97.56% | Beta(779,1) | Devasia R. A., et al. 2009 ⁶⁸ | Of 797 isolates, 778 susceptible cases were identified using the gold standard. Of them, all 19 were correctly identified by MGIT. These values used to update a Beta(1,1) prior. |

TABLE S2. Probability of loss to follow up by month of treatment

| Time, t, in months | Proportion LTFU at t | LTFU-free survival at t | p(LTFU by t+1 alive at t) | Adjusted* p(LTFU by t+1 alive at t) |
|--------------------|----------------------|-------------------------|-----------------------------|---------------------------------------|
| 0 | 0 | 1 | 0.025 | 0.025 |
| 1 | 0.0254 | 0.97461 | 0.009 | 0.009 |
| 2 | 0.0340 | 0.96601 | 0.012 | 0.012 |
| 3 | 0.0452 | 0.95481 | 0.011 | 0.011 |
| 4 | 0.0553 | 0.94472 | 0.015 | 0.015 |
| 5 | 0.0693 | 0.93072 | 0.015 | 0.015 |
| 6 | 0.0836 | 0.91641 | 0.013 | 0.013 |
| 7 | 0.0951 | 0.90487 | 0.015 | 0.015 |
| 8 | 0.1088 | 0.8912 | 0.011 | 0.011 |
| 9 | 0.1189 | 0.88114 | 0.008 | 0.008 |
| 10 | 0.1259 | 0.87414 | 0.005 | 0.005 |
| 11 | 0.1302 | 0.86977 | 0.011 | 0.011 |
| 12 | 0.1400 | 0.85997 | 0.005 | 0.005 |
| 13 | 0.1443 | 0.85567 | 0.005 | 0.005 |
| 14 | 0.1485 | 0.85146 | 0.008 | 0.008 |
| 15 | 0.1556 | 0.84436 | 0.003 | 0.003 |
| 16 | 0.1586 | 0.84145 | 0.005 | 0.005 |
| 17 | 0.1627 | 0.83731 | 0.002 | 0.002 |
| 18 | 0.1642 | 0.83577 | 0.005 | 0.005 |
| 19 | 0.1685 | 0.83154 | 0.003 | 0.003 |
| 20 | 0.1712 | 0.82885 | 0.000 | 0.000 |
| 21 | 0.1712 | 0.82885 | 0.000 | 0 |
| 22 | 0.1712 | 0.82882 | 0.001 | 0 |
| 23 | 0.1724 | 0.82765 | 0.000 | 0 |
| 24 | 0.1720 | 0.828 | -- | 0 |

LTFU data from Walker et al. 2019.⁴⁹ *The values in the rightmost column are used as the model inputs. Compared to the fourth column, we rounded down the values from month 21 onwards such that the probability of LTFU is zero thenceforth. LTFU – Lost to Follow Up

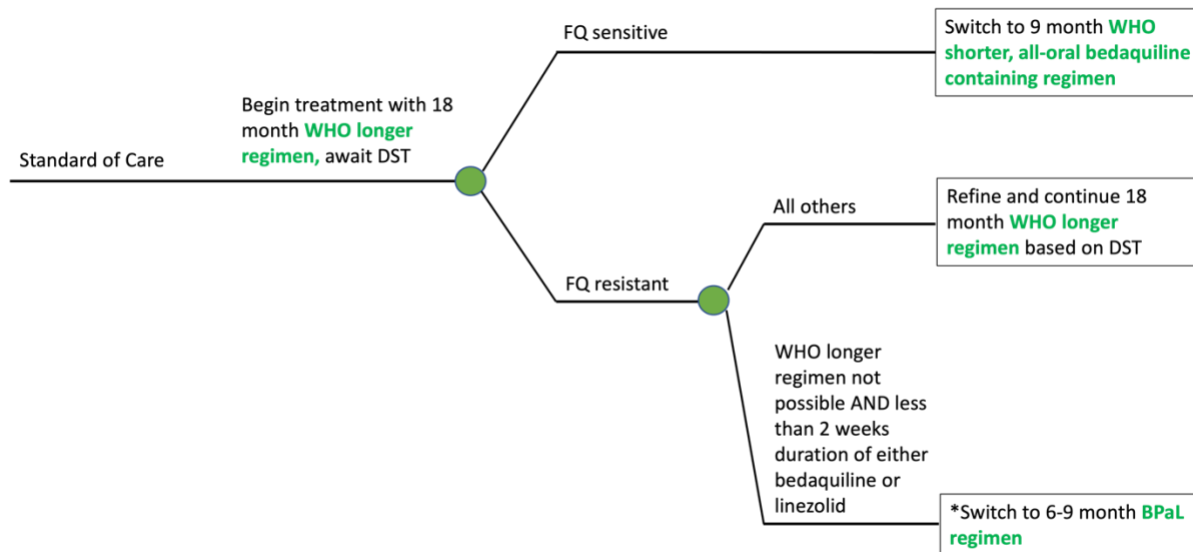
TABLE S3. Life Years under each strategy

| Strategy | Under BPaLM, alternative regimen if Moxifloxacin stopped | DST for second-line drugs at treatment initiation | Frequency of DST during subsequent treatment course | Undiscounted Life Years |
|---------------------|--|---|---|-------------------------|
| 5) 6 months BPaLM | BPaLC | No | Every 4 months | 15.36 (13.51, 17.33) |
| 1) 6 months BPaLM | BPaLC | Yes | Every 4 months | 15.38 (13.58, 17.32) |
| 2) 6 months BPaLM | BPaLC | Yes | Monthly | 15.37 (13.57, 17.37) |
| 6) 6 months BPaLM | BPaL only | No | Every 4 months | 15.02 (13.18, 16.92) |
| 3) 6 months BPaLM | BPaL only | Yes | Every 4 months | 15.02 (13.25, 16.95) |
| 4) 6 months BPaLM | BPaL only | Yes | Monthly | 15.02 (13.18, 16.93) |
| 7) standard of care | -- | Yes | Every 4 months | 15.48 (13.59, 17.27) |
| 8) standard of care | -- | Yes | Monthly | 15.48 (13.62, 17.26) |

Strategies are listed in the same order as Table 2. Mean values are shown with accompanying 95% UIs in parentheses. BPaL – bedaquiline, pretomanid, linezolid; BPaLC – bedaquiline, pretomanid, linezolid, clofazimine; BPaLM – bedaquiline, pretomanid, linezolid, moxifloxacin; UI – Uncertainty Interval

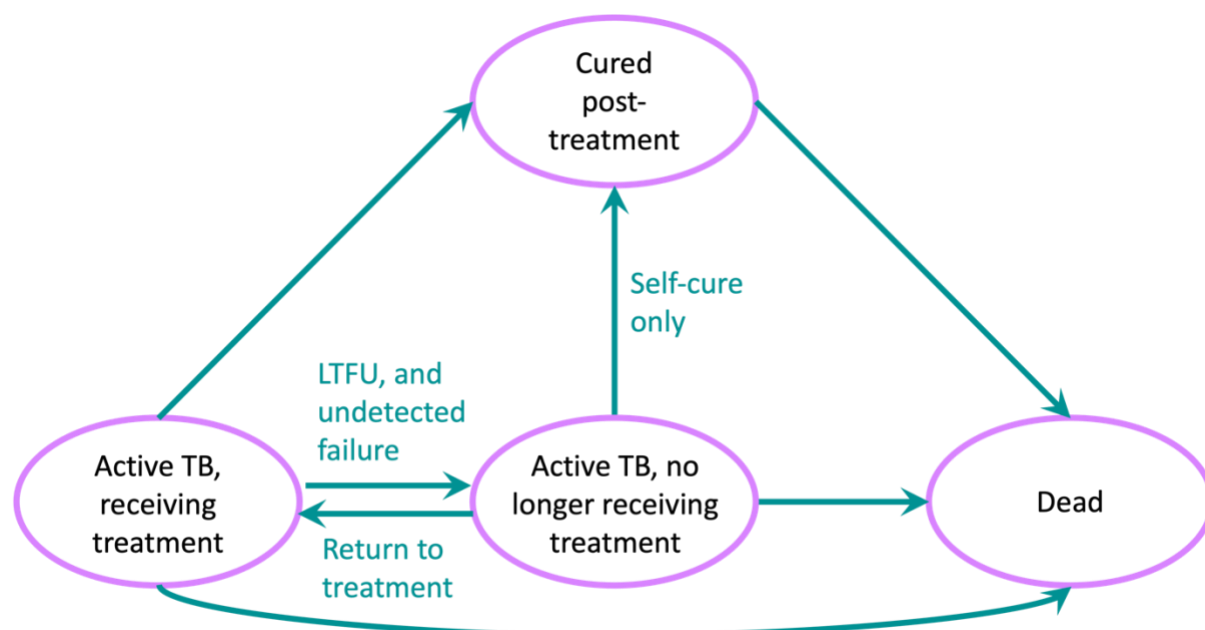
D. FIGURES S1-S10

FIGURE S1. Schematic of the initial workup phase for the standard of care



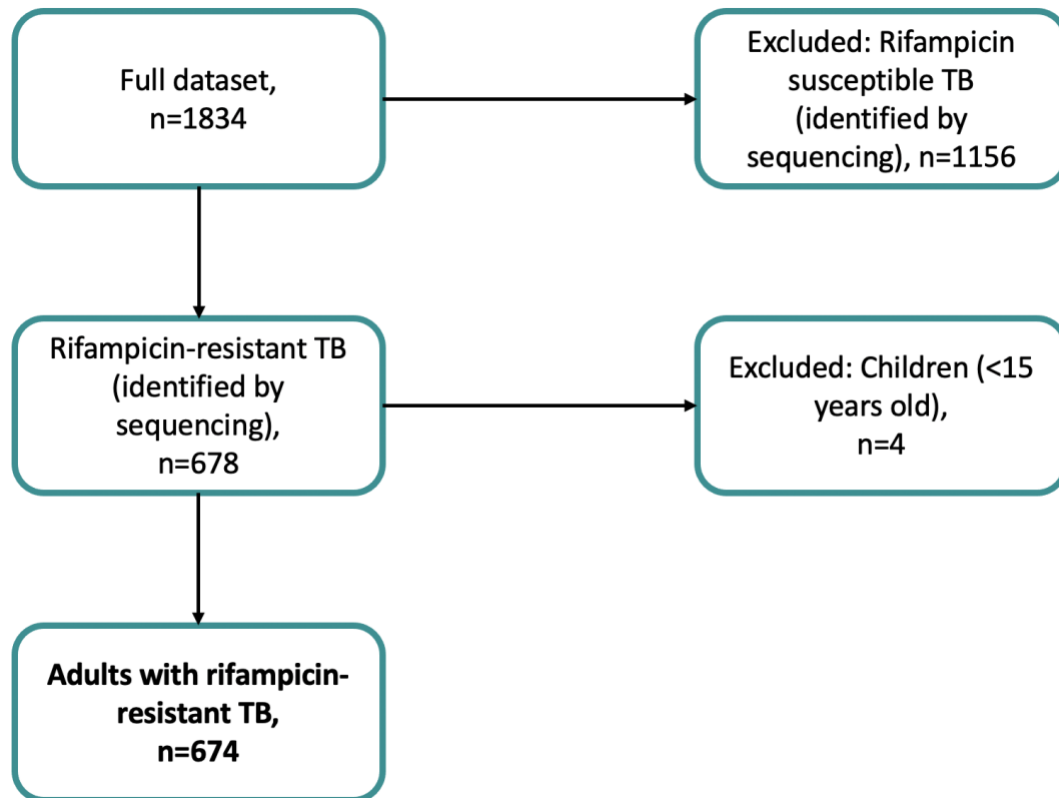
Both standard of care strategies (Strategy 7 and Strategy 8) are modeled on the recommended workup and regimen selection in the 2020 WHO guidelines on the treatment of drug-resistant tuberculosis.² We assumed that DST results (by MGIT) are available in 2 weeks. *While we include the BPaL regimen as per the guidelines, no patients actually met the criteria to receive it under the standard of care (Strategies 7 and 8) in our model (i.e., in all model simulations, it is possible to adopt a WHO longer regimen). BPaL – bedaquiline, pretomanid, linezolid; DST – drug susceptibility test; FQ – fluoroquinolone; MGIT – Mycobacterial Growth Indicator Tube; WHO – World Health Organization

FIGURE S2. Markov state-transition diagram



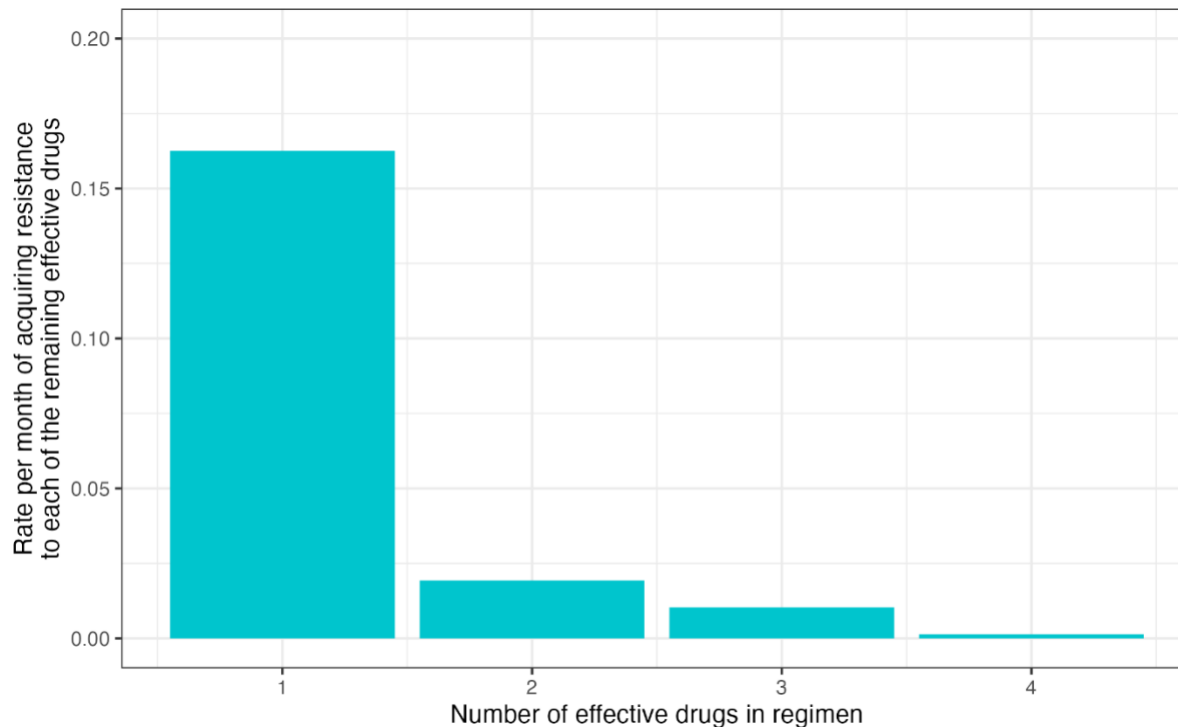
Transitions between states can occur as shown by the arrows. Though not receiving treatment, individuals in the “Active TB, no longer receiving treatment” state are subject to a low rate of self-cure, and so may still transition to the “Cured post-treatment” state. LTFU – Lost to follow-up; TB – tuberculosis.

FIGURE S3. Genomic sequencing data exclusion criteria



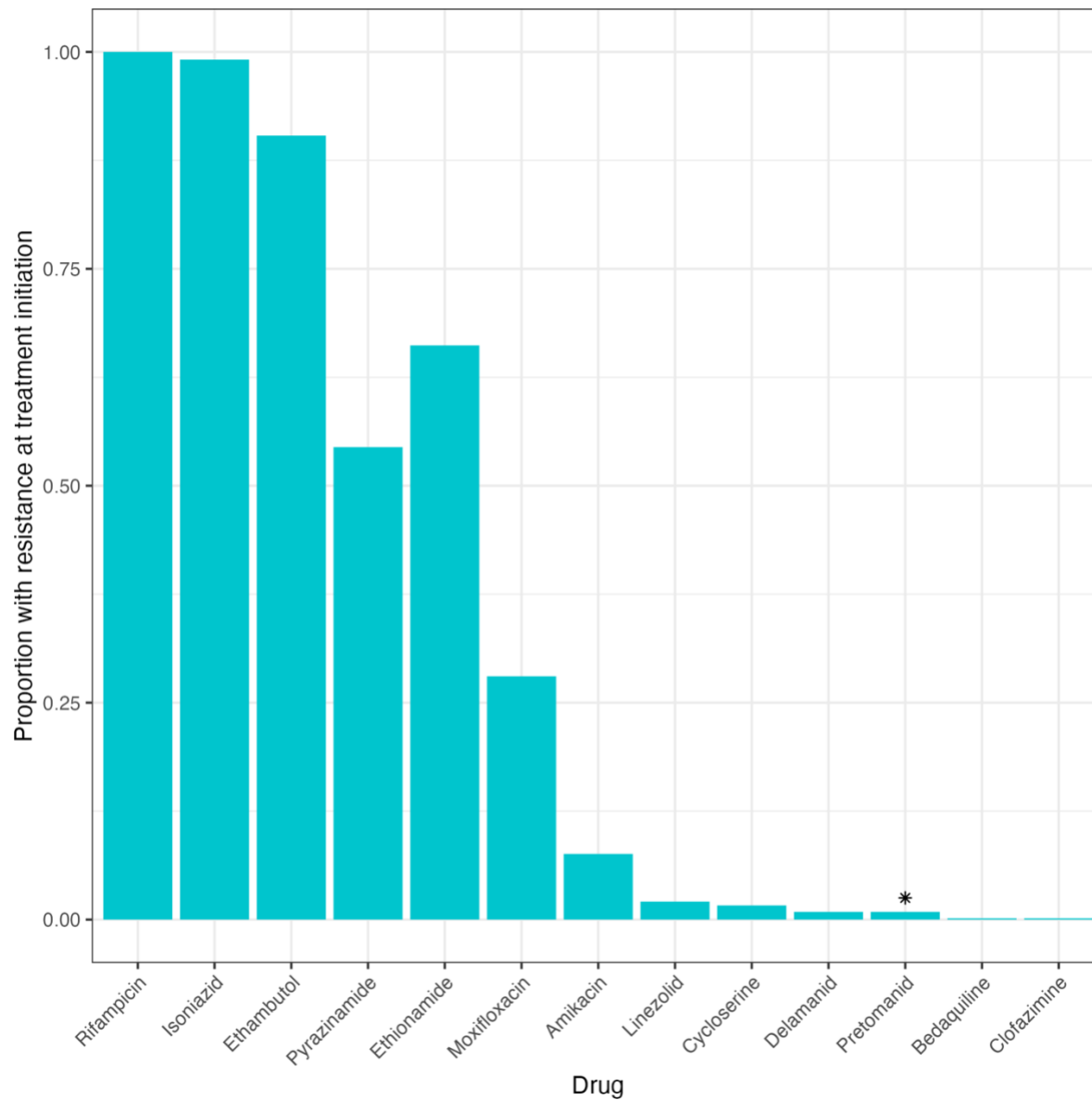
Exclusions made to the genomic sequencing drug susceptibility testing dataset are shown along with the number of observations. This dataset is described elsewhere.^{17,19} The presence of a mutation conferring resistance to rifampicin was assumed to convey full resistance, and vice versa. TB – tuberculosis

FIGURE S4. The rate of acquiring drug resistance



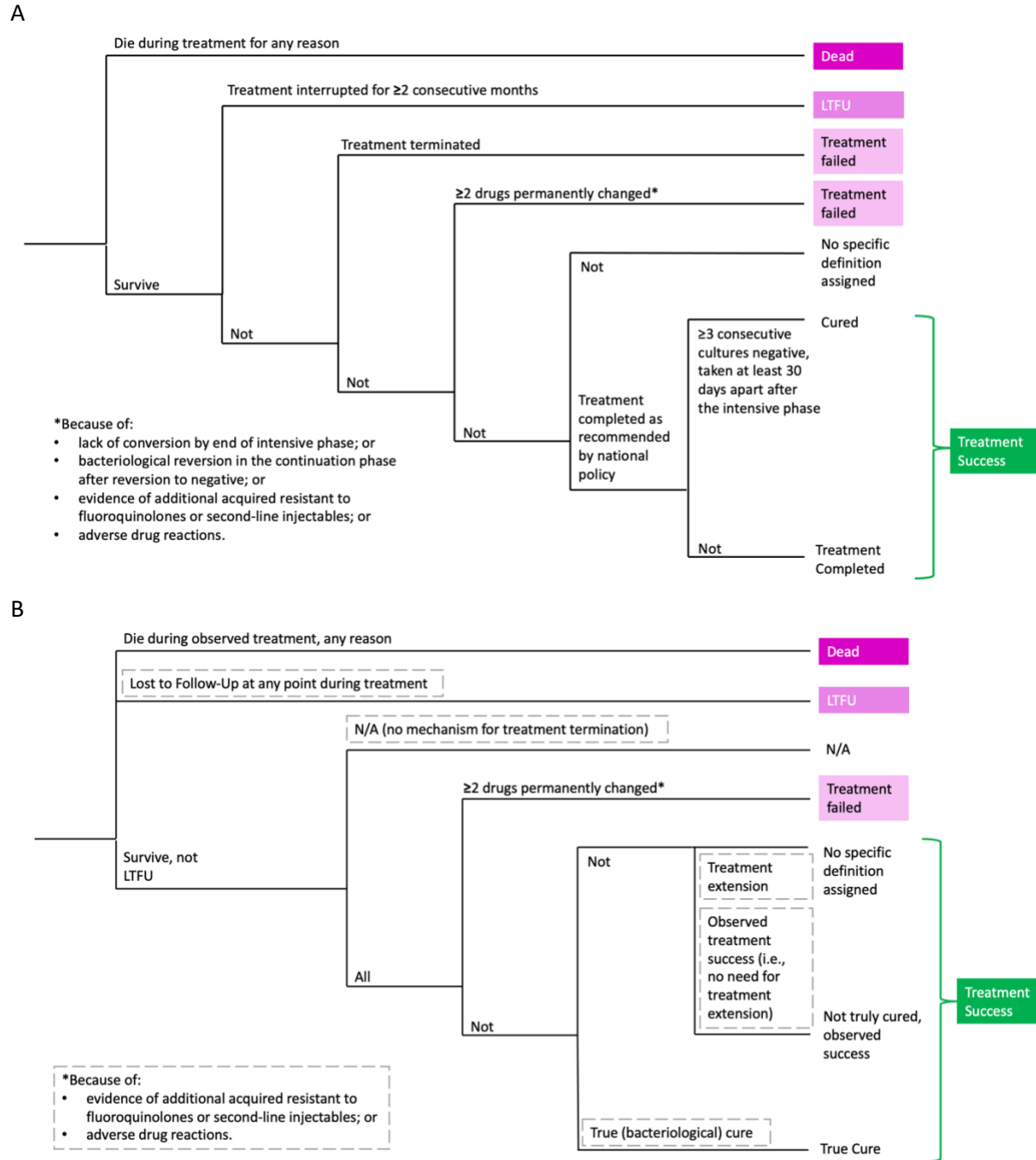
The modeled point estimate for the monthly rate that an individual's strain of *M. tuberculosis* will acquire resistance to each effective drug it is exposed to is plotted, conditional on that individual beginning the month with n effective drugs in the regimen (x-axis). Estimates for 1, 3 and 4 effective drugs were obtained from the literature. The estimate for 2 drugs was calculated, assuming an additive risk (i.e., the increase in risk for 2 effective drugs compared to 3 is the same as the increase in risk for 3 effective drugs compared to 4). See also Table S1.

FIGURE S5. Drug resistance at treatment initiation



The proportion of the cohort with primary resistance to each drug is plotted, as described by *M. tuberculosis* whole genomic sequencing data from Moldova.^{17,19} All those observations with rifampicin susceptibility were excluded, as per Figure S3. *There was no resistance data for pretomanid; resistance was assumed to be at the same level as for delamanid.

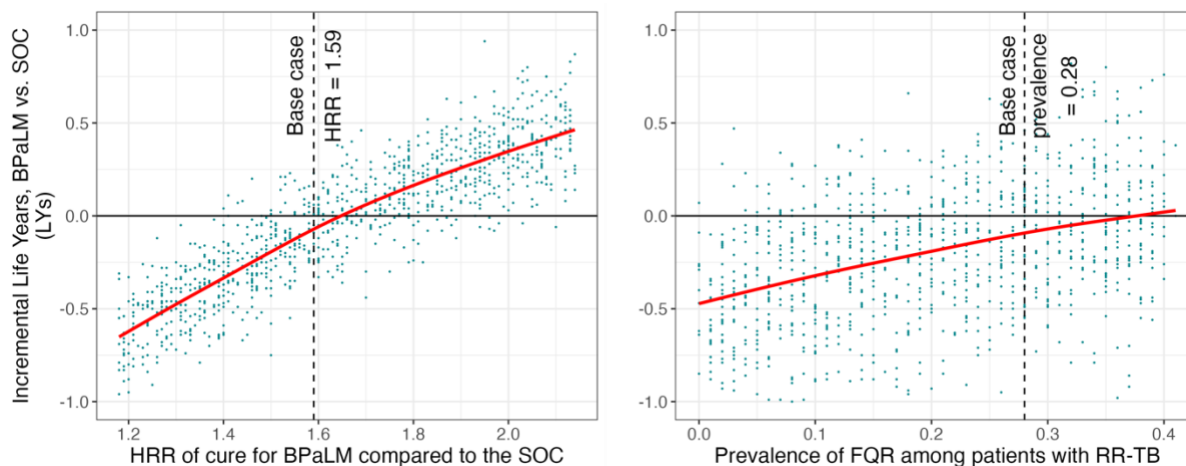
FIGURE S6. Assumptions on the classification of End of Treatment Outcomes



Schematic showing the definitions for end of treatment outcomes used by the WHO (A), and this model (B). The constituents of each of the major end of treatment outcome categories are shown, as applied to all RR-TB including MDR-TB and XDR-TB. Differences between the WHO definitions and those used in this model are highlighted by the gray hashed boxes. The WHO definitions are not necessarily mutually exclusive; we assumed that the classification takes place according to the tree structure in (A), and implemented the aligned structure in (B) for tractability given the model mechanisms. For example,

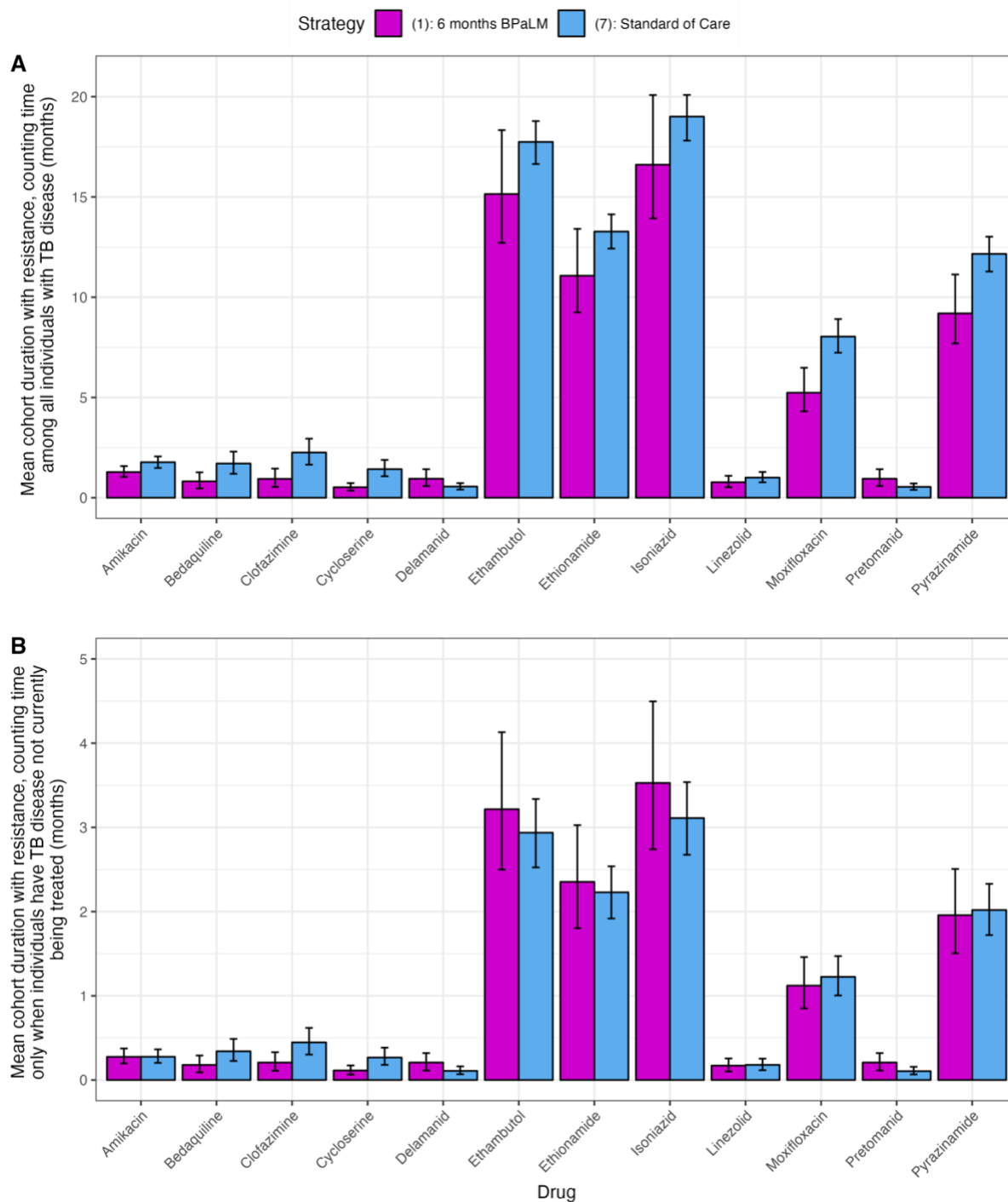
an individual who failed treatment and then died would be recorded as a death, because the branch involving death is closer to the root of the tree.

FIGURE S7. Sensitivity analyses on the main effect estimate and the prevalence of fluoroquinolone resistance for the outcome of Incremental Life Years



One-way sensitivity analyses testing the effect of key model parameter assumptions, in terms of their effect on the incremental Life Years experienced under the Strategy (1) (6 months BPaLM, DST upfront, repeat DST every 4 months, BPaLC if Mfx stopped) as compared to Strategy (7) (standard of care 9-18 month regimens based on results of upfront DST, repeat DST every 4 months). We chose to compare these two strategies as they were the best-performing BPaLM-based and standard of care-based strategies, respectively. Each of the parameters is varied deterministically in the respective sensitivity analysis, with all other model parameters drawn as in the probabilistic sensitivity analysis. In the left column, the HRR of cure for the BPaLM regimen compared to the standard of care is varied. In the right column, we vary the starting prevalence of fluoroquinolone resistance in the cohort. Each of 1,000 model runs is shown in each plot, itself an average of 10,000 individual patient simulations. The red line shows the trend as represented by regression of the y-axis variable on the x-axis variable, using a generalized additive model with cubic spline to obtain a restricted maximum likelihood within ggplot2.³³ The vertical dashed lines mark the base case assumption for the mean of each of these model parameters. FQR – Fluoroquinolone Resistance; HRR – Hazard Rate Ratio; LY –Life Year; RR-TB – Rifampicin-resistant tuberculosis

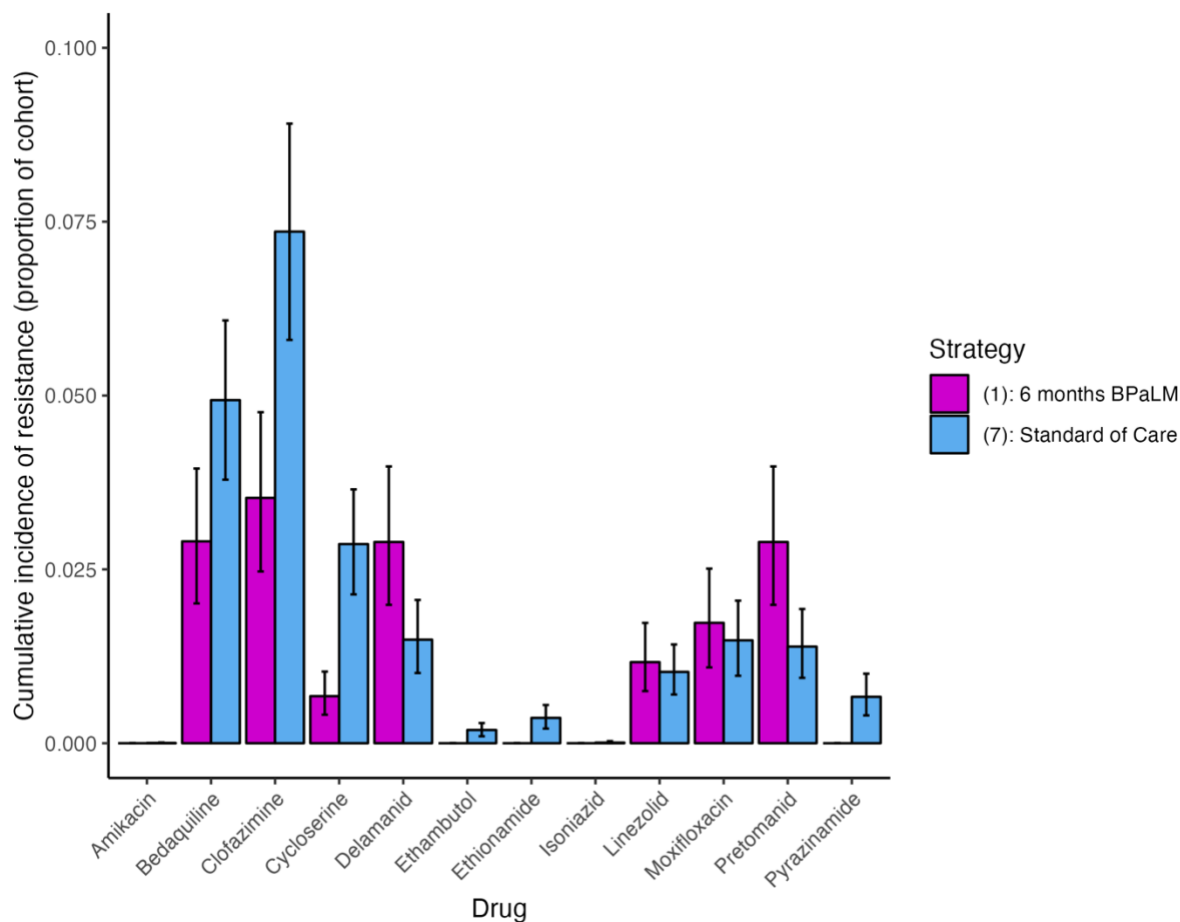
FIGURE S8. Duration of TB disease with resistance to each drug



The duration with TB disease with resistance is shown in months for each of 12 anti-TB drugs, for Strategy (1) (6 months BPaLM, DST upfront, repeat DST every 4 months, BPaLC if Mfx stopped) as compared to Strategy (7) (standard of care 9-18 month regimens based on results of upfront DST, repeat DST every 4 months). We chose to compare these two strategies as they were the best-performing BPaLM-based and standard of care-based strategies, respectively. Estimates are provided per individual, averaged over the entire cohort initiating treatment. The mean estimate is shown by the bar, with 95% UIs represented as error bars. In (A), time is counted with resistance at any point until the individual is truly

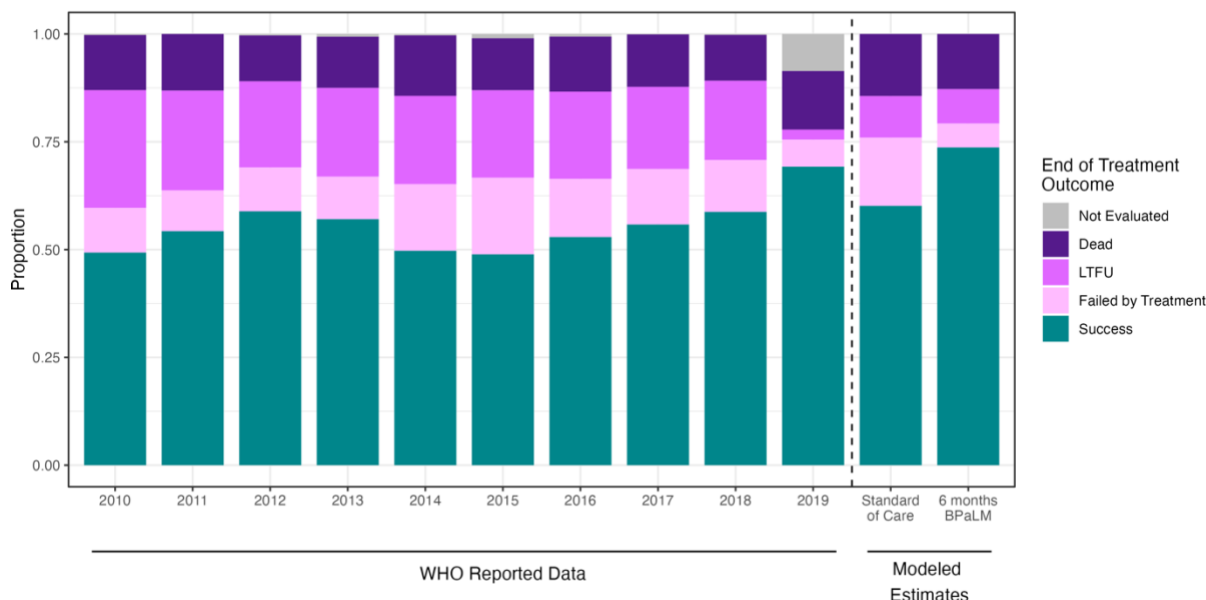
cured. In (B), time is counted with resistance only while an individual has TB disease, but is not being treated (such as when LTFU). BPaLM – bedaquiline, pretomanid, linezolid, moxifloxacin; TB – Tuberculosis; UI – Uncertainty Interval

FIGURE S9. Lifetime cumulative incidence of drug resistance



The lifetime cumulative incidence of resistance to each drug in the modeled cohort to each of 12 anti-TB drugs, for Strategy (1) (6 months BPaLM, DST upfront, repeat DST every 4 months, BPaLC if Mfx stopped) as compared to Strategy (7) (standard of care 9-18 month regimens based on results of upfront DST, repeat DST every 4 months). We chose to compare these two strategies as they were the best-performing BPaLM-based and standard of care-based strategies, respectively. The bars correspond to the proportion who ever acquire resistance under the two intervention strategies, respectively. The error bars correspond to the modeled 95% UI. BPaLM – bedaquiline, pretomanid, linezolid, moxifloxacin; UI – Uncertainty Interval

FIGURE S10. Validating End of Treatment (EOT) outcomes



The proportions recorded for each EOT outcome are shown for WHO RR-TB data 2010–2019 for Moldova (left of the vertical dashed line) and the modeled cohort outcomes (right of the vertical dashed line), where we assume that death during treatment or LTFU take precedence over a preceding treatment failure. Standard of care refers to modelled Strategy 7, and 6 months BPALM refers to modelled Strategy 1. We compared these two strategies against the WHO data for consistency with other figures presented. The number of observations per year in the WHO TB outcomes data for all MDR/RR-TB is in the range (559, 996). BPALM – bedaquiline, pretomanid, linezolid, moxifloxacin; EOT – End Of Treatment; LTFU – Lost to Follow Up; RR-TB – Rifampicin-resistant tuberculosis; WHO – World Health Organization

E. CALCULATED MODEL PARAMETERS

(following page)

Calculated Model Parameters

Note on terminology: As in most of the modeling literature, but not always the wider public health literature, we use the term rate and probability/proportion to mean different things. The former is in the sense of an instantaneous rate of change. Unlike a probability/proportion, it can be greater than 1. To convert between the two when the rate is constant over time, we use $P(X) = 1 - e^{-r*t}$, where $P(X)$ is the probability of an event X occurring in a time period of length t_1 , r is the event rate per unit of time t_2 , and $t = \frac{t_1}{t_2}$.

There are several model parameters that are not well approximated by the available data. In some cases, we adjusted published estimates to better fit the model's processes. Details for some of these parameter calculations are summarized in Table S1, but here we provide some additional notes on calculations for some parameters.

1. The probability of being correctly identified as not cured (i.e., non-success), conditional on being truly not cured

"True" cure here refers to the elimination of *M. tuberculosis* in the host, such that it is no longer capable of causing disease. This is contrasted with an observed cure, where the patient clinically appears to have successfully completed treatment, but may subsequently have recurrent disease. "TB" here refers to all RR-TB specifically.

This is an unobserved (i.e. latent) process and as such cannot be estimated from empirical observation.

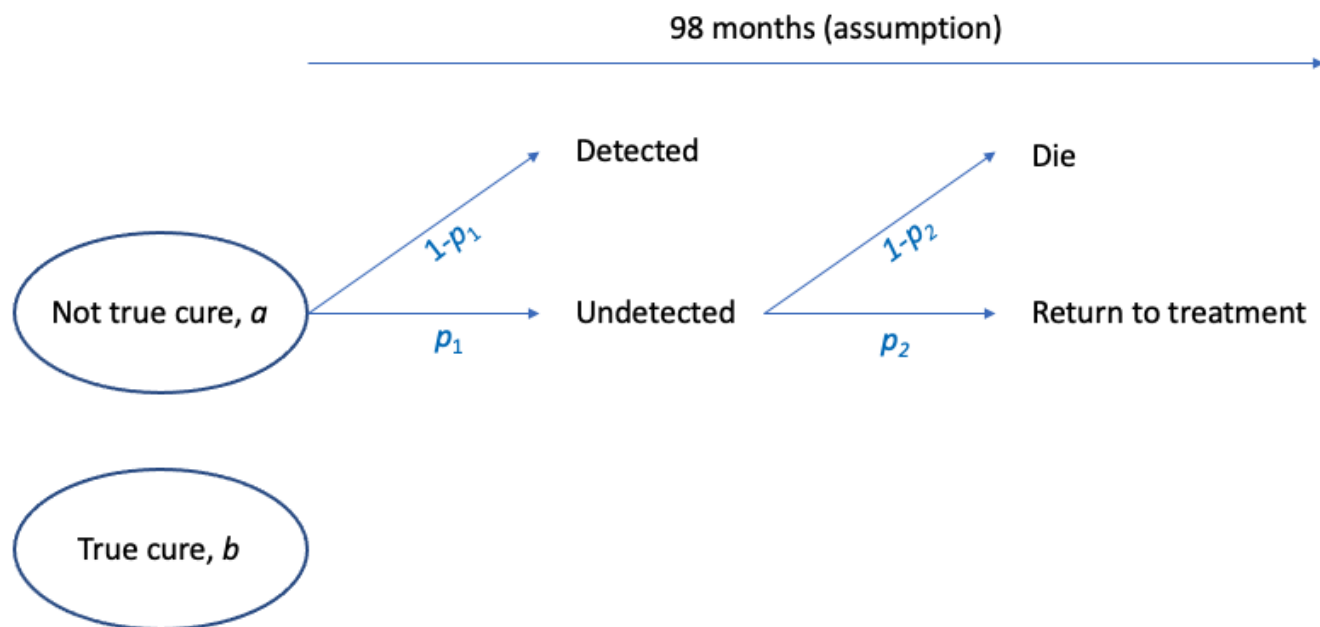
Instead, we use an estimate from Blöndal et al 2012 [50]. This paper reported that among 129 patients observed to be successfully treated at the end of their TB regimen, 11 had recurrent disease over a median follow-up time of 98.1 months.

The paper also demonstrates that approximately 90% of the cohort had event-free survival by the end of follow-up (Fig. 4 shows Kaplan-Meier curves separately for: a) non-XDR but MDR-TB, and b) XDR-TB. Though there was varying duration of follow-up, we also apply the 98.1 month median follow-up duration here for calculations.

For simplicity, we make the following assumptions with regard to this study:

- we assume that all recurrences in this paper are relapses returning to treatment, not reinfection
- we assume that *all* patients who are truly cured are correctly identified as such, and thus do not receive a treatment extension
- we assume that there is no self-cure applied to this group

The following diagram represents some of the processes of interest here.



The quantities of interest in the figure are as follows:

- 98 months, the median follow-up time in the study, adopted as the timeframe for this process
- a , the proportion who are not truly cured among those who complete a TB treatment regimen,
- $b = 1 - a$ be the proportion who are truly cured among those who complete a treatment regimen,
- p_1 , the proportion of those not truly cured who are undetected/misclassified. These individuals are observed to be successfully treated, and thus are discharged from care.
- p_2 , the proportion of those undetected, not truly cured individuals who eventually return to treatment by 98 months.
- $1 - p_2$, the proportion of those undetected, not truly cured individuals who die by 98 months,
- individuals who are not truly cured and are correctly detected receive a treatment extension as described elsewhere,

The estimate from the study can be represented as follows:

$$\Pr(\text{return to treatment}|\text{observed successfully treated}) = q = \frac{11}{129} = \frac{ap_1p_2}{ap_1+b}$$

Defined for this population, (i.e., those observed to have been successfully treated):

Let C be the event that such an individual has truly been cured.

Let R be the event that such an individual returns to treatment.

Let D be the event that such an individual dies.

We start therefore with

$$P(R) = \frac{11}{129}$$
$$P(R \cup D) \approx 1 - 0.9 = 0.1$$

Because an individual would only be recorded as returning to treatment or dead, not both,

$$P(R \cap D) = 0$$

which implies

$$P(R \cup D) = P(R) + P(D) - P(R \cap D) = P(R) + P(D) + 0$$
$$= 0.1$$

and thus,

$$P(R \cup D) = P(R) + P(D)$$
$$0.1 = \frac{11}{129} + P(D)$$
$$P(D) = 0.1 - \frac{11}{129}$$
$$P(D) = 0.0147$$

Applying LOTP to $P(R)$,

$$P(R) = P(R|C)P(C) + P(R|\bar{C})P(\bar{C})$$

Because no individual who has truly cured will relapse, this simplifies to

$$P(R) = 0 * P(C) + P(R|\bar{C})P(\bar{C})$$
$$P(R) = P(R|\bar{C})P(\bar{C})$$

Let us assume that, by 98 months, almost all (let us say 95%) of individuals who were not truly cured at the end of treatment will have either returned to treatment or died.

Let the monthly rate of relapse be μ_R .

Let the monthly mortality rate of TB on treatment be $\mu_{D \text{ on } Rx}$. The one month probability of death while on treatment is 0.004,

$$\begin{aligned}\mu_{D \text{ on } Rx} &= -\ln(1 - 0.004) \\ &= 0.004008\end{aligned}$$

To determine $P(D|\bar{C})$,

$$\begin{aligned}P(D|\bar{C}) &= 1 - e^{-0.004008*98} \\ &= 0.3248\end{aligned}$$

And so,

$$\begin{aligned}P(D \cup R|\bar{C}) &= 0.95 \\ 98(\mu_{D \cup R}) &= -\ln(1 - 0.95) \\ 98(\mu_{D \text{ on } Rx} + \mu_R) &= -\ln(1 - 0.95) \\ 98(\mu_{D \text{ on } Rx} + \mu_R) &= 3 \\ \mu_{D \text{ on } Rx} + \mu_R &= \frac{3}{98} \\ 0.004008 + \mu_R &= \frac{3}{98} \\ \mu_R &= 0.0266\end{aligned}$$

assuming a constant relapse rate over the course of 98 months.

Let us also use this estimate to inform the proportion of this cohort not truly cured. Recall

$$\begin{aligned}P(R) &= P(R|\bar{C})P(\bar{C}) \\ \frac{11}{129} &= P(R|\bar{C})P(\bar{C})\end{aligned}$$

Because of the competing events of death and relapse in this problem where only one is recorded, I simulated a Markov model over 98 monthly cycles using the rates calculated above. After 98 months, 82.5% of the not truly cured had returned to treatment, and 12.5% had died without returning to treatment. As such,

$$\begin{aligned}\frac{11}{129} &= P(R|\bar{C})P(\bar{C}) \\ \frac{11}{129} &= 0.825 * P(\bar{C}) \\ P(\bar{C}) &= 0.103\end{aligned}$$

So in this population of individuals who had been observed to successfully complete treatment, we estimate that approximately 10.3% were not truly cured of the disease.

Now let's obtain the estimate for the proportion misclassified.

Referring back to the diagram and associated notation, we can express $P(\bar{C}) = 1 - P(C)$ as

$$1 - P(C) = \frac{ap_1}{ap_1 + b}$$

$$0.103 = \frac{ap_1}{ap_1 + b}$$

$$0.103 = \frac{ap_1}{ap_1 + 1 - a}$$

While a and $b = 1 - a$ will change based on the cohort characteristics, treatment and other factors, we model p_1 as a variable independent of the overall proportion who truly have disease, i.e. it is a test characteristic, 1-sensitivity of a clinical assessment "test" to detect those with the "disease" of being truly cured.

The proportion with observed success in the study by Blondal et al. [50] is $129/211 = 0.611$. We note that this is approximately the same as the overall proportion with observed success in the Bastos et al. [47] review of 0.64.

This can be represented as the denominator of the expression above,

$$ap_1 + b = 0.611$$

$$ap_1 + 1 - a = 0.611$$

$$ap_1 - a = 0.611 - 1$$

$$a - ap_1 = 1 - 0.611$$

$$a(1 - p_1) = 1 - 0.611$$

$$a = \frac{1 - 0.611}{1 - p_1}$$

$$a = \frac{0.389}{1 - p_1}$$

This can now be substituted into the equation above to solve for p_1 .

$$0.103 = \frac{ap_1}{ap_1 + 1 - a}$$

$$0.103 = \frac{\frac{0.389p_1}{1-p_1}}{1 + \frac{0.389p_1}{1-p_1} - \frac{0.389}{1-p_1}}$$

$$0.103 = \frac{0.389p_1}{1 - p_1 + 0.389p_1 - 0.389}$$

$$0.103 = \frac{0.389p_1}{0.611 - 0.611p_1}$$

$$0.103(0.611 - 0.611p_1) = 0.389p_1$$

$$0.0629 - 0.0629p_1 = 0.389p_1$$

$$0.0629 = 0.452p_1$$

$$p_1 = 0.139$$

We obtain an estimate that 13.9% of patients who are truly not cured are misclassified as cured at the end of treatment (i.e. clinical assessment is 84.1% sensitive in being able to detect those not truly cured).

2. Applying the proportion misclassified to the cure rate and proportion cured

We use the value for p_1 above to calculate the proportion truly cured from the proportion of observed successes reported.

We assume that the "test characteristics" for diagnosing cure are the same across time, and as such p_1 can be applied to determine the true cure at each point clinical assessment takes place in the model.

To distinguish between the notation above for the Blondal et al 2012 paper [50] and the events in our model,

Let c be the event that an individual is truly cured. Let t be the event that an individual is reported as cured (and is thus observed so in the data).

$$P(T) = P(T|C)P(C) + P(T|\bar{C})P(\bar{C})$$

$$P(T) = 1 * P(C) + 0.139 * P(\bar{C})$$

$$p(T) = 1 * P(C) + 0.139 * (1 - P(C))$$

$$p(T) = 0.139 + 0.841P(C)$$

$$p(C) = \frac{P(T) - 0.139}{0.841}$$

For example, given the reported proportion cured at the end of treatment in the Bastos et al. review [47]

$$P(C) = \frac{0.64 - 0.139}{0.841}$$
$$\approx 0.596$$

Thus, while 64% were reported to be cured, we would estimate that just under 60% were truly cured, and the rest (4%) were truly not cured and had been misclassified as cured.

3. Calculating different mortality rates for those cured and not cured, while on treatment

There are estimates from the literature [47] for the proportion who are dead at the End Of Treatment (EOT).

Using these estimates:

- Let $p(\text{dead})_{o,EOT,MDR}$ be the probability that an MDR-TB patient (here, exclusive of XDR) will be observed as dead at the EOT. $p(\text{dead})_{o,EOT,MDR} = 0.08$, 95% *CI* : (0.07, 0.09).
- Let $p(\text{dead})_{o,EOT,XDR}$ be the probability that an XDR-TB patient will be observed as dead at the EOT. $p(\text{dead})_{o,EOT,XDR} = 0.21$, 95% *CI* : (0.18, 0.25).

Based on the model mechanisms, we allow for truly cured individuals to have a lower mortality rate, which is a multiplier of background mortality. As a result, the overall mortality estimates from the literature are an **average**: at any given time point, the observed mortality rate is assumed to be a mean mortality rate of a two groups, one (lower) mortality rate in the cured group, and another (higher) mortality rate in the non-cured group. The challenge is that the proportion cured varies over time. The following details the approach we have taken, which is applied to the MDR-only and XDR population separately.

Let $\mu_{o,T} = -\ln(1 - p(\text{dead})_{o,EOT})$ be the observed mortality rate in the population over the whole treatment course, converted from the observed proportion dead at the EOT.

Let μ_C be the monthly mortality rate among those truly cured. This does not vary by month.

Let μ_{NC} be the monthly mortality rate among those not truly cured. This does not vary by month.

Let $t \in \{1, 2, \dots, 21\}$ denote the month of the regimen. We assume for these calculations that EOT outcomes are recorded at 21 months, the modal regimen duration in the studies comprising the Bastos et al. 2017 review.

Let $p(\text{cured})_t$ be the proportion of alive patients truly cured at the end of month t .

Among alive patients, true cure and true non-cure are mutually exclusive and collectively exhaustive. As such, $p(\text{cured})_t + p(\overline{\text{cured}})_t = 1$, $\forall t$.

Then,

$$\begin{aligned}
 \mu_{o,T} &= \sum_{t=1}^T [\mu_C * p(\text{cured})_t + \mu_{NC} * p(\overline{\text{cured}})_t] \\
 \mu_{o,T} &= \sum_{t=1}^T [\mu_C * p(\text{cured})_t + \mu_{NC} * (1 - p(\text{cured})_t)] \\
 \mu_{o,T} &= \sum_{t=1}^T [\mu_C * p(\text{cured})_t + \mu_{NC} - \mu_{NC} * p(\text{cured})_t] \\
 \mu_{o,T} &= T\mu_{NC} + \sum_{t=1}^T [\mu_C * p(\text{cured})_t - \mu_{NC} * p(\text{cured})_t] \\
 \mu_{o,T} &= T\mu_{NC} + \sum_{t=1}^T [\mu_C * p(\text{cured})_t] - \sum_{t=1}^T [\mu_{NC} * p(\text{cured})_t] \\
 \mu_{o,T} - \sum_{t=1}^T [\mu_C * p(\text{cured})_t] &= T\mu_{NC} - \sum_{t=1}^T [\mu_{NC} * p(\text{cured})_t] \\
 \mu_{o,T} - \mu_C \sum_{t=1}^T p(\text{cured})_t &= T\mu_{NC} - \mu_{NC} \sum_{t=1}^T p(\text{cured})_t \\
 \mu_{o,T} - \mu_C \sum_{t=1}^T p(\text{cured})_t &= \mu_{NC} (T - \sum_{t=1}^T p(\text{cured})_t) \\
 \mu_{NC} &= \frac{\mu_{o,T} - \mu_C \sum_{t=1}^T p(\text{cured})_t}{(T - \sum_{t=1}^T p(\text{cured})_t)} \quad (1)
 \end{aligned}$$

We are left with a formula with two unknowns, μ_{NC} and $p(cured)_t$.

The next step is to provide an approximation for $p(cured)_t$, the proportion of alive patients who are cured at time t .

Let $p(cured)_0 = 0$.

Let $p(cured)_1 = 0.019$, allowing only for the mechanism of self-cure in month 1.

Let $p(cured)_{21}$ be the proportion of patients cured among those alive from the Bastos et al 2017 review. As such, for MDR-TB patients, this will be approximated by a numerator of the observed proportion of treatment successes at end of treatment, and a denominator of the proportion alive at the end of treatment:

$$p(cured)_{MDR,21} = \frac{0.64}{1-0.08} = 0.70$$

For XDR-TB patients, this is approximated in the same way:

$$p(cured)_{XDR,21} = \frac{0.26}{1-0.21} = 0.33$$

To obtain the proportion cured among those alive for months 2-20 in these calculations, we make the simplifying assumption of a constant rate - among the alive non-cured - of converting to cure. We also ignore the dual mechanisms of self-cure and treatment-related cure, along with any differences in duration between MDR- and XDR-TB regimens:

As such, we obtain a monthly cure rate for alive MDR-TB patients, $\mu_{cure,MDR}$ as follows:

$$\mu_{cure,MDR} = \frac{-\ln(1-p(cured)_{MDR,21})}{21}$$

$$\mu_{cure,MDR} = \frac{-\ln(1-0.70)}{21}$$

$$\mu_{cure,MDR} = 0.057$$

Similarly, we obtain the monthly cure rate for alive XDR-TB patients, $\mu_{cure,XDR}$ as follows,

$$\mu_{cure,XDR} = \frac{-\ln(1-p(cured)_{XDR,21})}{21}$$

$$\mu_{cure,XDR} = \frac{-\ln(1-0.33)}{21}$$

$$\mu_{cure,XDR} = 0.019$$

From these, we can obtain the cumulative proportion of alive patients cured during each month (not shown). We plug these into formula (1),

$$\mu_{NC} = \frac{\mu_{o,T} - \mu_C \sum_{t=1}^T p(cured)_t}{(T - \sum_{t=1}^T p(cured)_t)}$$

$$T = 21$$

For MDR-TB,

$$\mu_{o,T,MDR} = -\ln(1 - 0.08)$$

$$\mu_{o,T,MDR} = 0.083$$

For XDR-TB,

$$\mu_{o,T,XDR} = -\ln(1 - 0.21)$$

$$\mu_{o,T,XDR} = 0.236$$

μ_C , the monthly mortality rate among the cured, is a function of background (ASR) mortality. The median age was 35 in the Bastos review, and the modal country of included studies was South Africa, which is also approximately middle of the pack for the income level of the meta-analysis. As such, we adopt the monthly mortality rate for a 35 year old individual in South Africa, and the mortality rate ratio (MRR) for MDR-TB from the parameter table.

$$\mu_{ASR} = 0.00069$$

$$MRR = 3.07$$

$$\mu_C = \mu_{ASR} * MRR$$

$$\mu_C = 0.00069 * 3.07$$

$$\mu_C = 0.00211$$

The mortality rate among those cured is assumed for now to be the same among those with MDR-TB and XDR-TB, although this could be edited going forward.

From the Excel table "Estimating mort rates", we have the following values too:

$$\sum_{t=1}^T p(cured)_{t,MDR} = 9.102$$

$$\sum_{t=1}^T p(cured)_{t,MDR} = 3.519$$

Putting all of this together, for MDR-TB:

$$\begin{aligned} \mu_{NC,MDR} &= \frac{\mu_{o,T,MDR} - \mu_C \sum_{t=1}^T p(cured)_{t,MDR}}{(T - \sum_{t=1}^T p(cured)_{t,MDR})} \\ \mu_{NC,MDR} &= \frac{0.083 - 0.00211 * 9.102}{(21 - 9.102)} \\ \mu_{NC,MDR} &= 0.00536 \end{aligned}$$

And for XDR-TB,

$$\begin{aligned} \mu_{NC,XDR} &= \frac{\mu_{o,T,XDR} - \mu_C \sum_{t=1}^T p(cured)_{t,XDR}}{(T - \sum_{t=1}^T p(cured)_{t,XDR})} \\ \mu_{NC,XDR} &= \frac{0.236 - 0.00211 * 3.519}{(21 - 3.519)} \\ \mu_{NC,XDR} &= 0.01307 \end{aligned}$$