

1 Urine lipoarabinomannan concentrations among HIV-
2 uninfected adults with pulmonary or extrapulmonary
3 tuberculosis disease in Vietnam
4

5 Nguyen B. Hoa^{1†}, Mark Fajans^{2†}, Hung Nguyen Van¹, Bao Vu Ngoc³, Nhung Nguyen Viet¹, Hoa Nguyen
6 Thi¹, Lien Tran Thi Huong³, Dung Tran Minh³, Cuong Nguyen Kim¹, Trinh Ha Thi Tuyet¹, Tri Nguyen Huu¹,
7 Diep Bui Ngoc⁴, Hai Nguyen Viet¹, An Tran Khanh³, Lorraine Lillis⁵, Marcos Perez⁵, Katherine K. Thomas⁹,
8 Roger B. Peck⁵, Jason L. Cantera⁶, Eileen Murphy⁵, Olivia R. Halas⁵, Helen L. Storey⁵, Abraham Pinter⁷,
9 Morten Ruhwald⁸, Paul K. Drain^{2,9,10}, David S. Boyle^{5*}

10

11 ¹ National Lung Hospital, Hanoi, Vietnam

12 ² Department of Epidemiology, University of Washington, Seattle, USA

13 ³ Southeast Asia Hub, PATH, Hanoi, Vietnam

14 ⁴ Center for Creative Initiatives in Health and Population, Hanoi, Vietnam

15 ⁵ Diagnostics Global Program, PATH, Seattle, USA

16 ⁶ Global Health Labs, Bellevue, USA

17 ⁷ Public Health Research Institute Center, New Jersey Medical School, Rutgers University, USA

18 ⁸ TB Program, Foundation for Innovative New Diagnostics, Geneva, Switzerland

19 ⁹ Department of Global Health, University of Washington, Seattle, USA

20 ¹⁰ Department of Medicine, University of Washington, Seattle, USA

21

22 † Both authors contributed equally to this work

23 * Corresponding author (DSB): dboyle@path.org

24

25 Abstract

26 Lipoarabinomannan (LAM) is a Mycobacterial cell wall glycolipid excreted in urine, and a target
27 biomarker of rapid diagnostic tests (RDTs) for tuberculosis (TB) disease. Urine LAM (uLAM) testing by
28 RDT has been approved for people living with HIV, but there is limited data regarding uLAM levels in
29 HIV-negative adults with TB disease. We conducted a clinical study of adults presenting with TB-related
30 symptoms at the National Lung Hospital in Hanoi, Vietnam. The uLAM concentrations were measured
31 using electrochemiluminescent immunoassays and compared to a microbiological reference standard
32 (MRS) of sputum, GeneXpert Ultra and TB culture. Additional microbiological testing was conducted for
33 possible extrapulmonary TB, when clinically indicated. Among 745 participants enrolled, 335 (44.9 %)
34 participants recruited from the pulmonary TB wards (PR-PTBW) and 6 (11.3%) participants recruited
35 from the EPTB wards (PR-EPTBW) had confirmed TB disease. The MRS positive cohort measured median
36 uLAM concentration for S4-20/A194-01 (S/A) were 14.5 pg/mL and 51.5 pg/mL, respectively. The
37 FIND28/A194-01 (F/A) antibody pair overall and TB-positive cohort measured mean uLAM was 44.4
38 pg/mL and 78.1 pg/mL, respectively. Overall, the S/A antibody pair had a sensitivity of 39% (95%
39 Confidence Interval [CI] 0.33, 0.44) and specificity of 97% (95% CI 0.96, 0.99) against the MRS. The F/A
40 antibody pair had a sensitivity of 41% (95% CI 0.35, 0.47) and specificity of 79% (95% CI 0.75, 0.84). The
41 areas under the receiver operating curves were 0.748 for S/A and 0.629 for F/A. There was little
42 difference between the S/A median uLAM concentration with pulmonary (55 pg/mL) and
43 extrapulmonary (36 pg/mL) TB disease. With F/A the medians for pulmonary and extrapulmonary TB
44 disease were 79% and 76.5% respectively. Among HIV-negative adults in Vietnam, concentrations of
45 uLAM remained relatively low for people with TB disease, which may present challenges for developing
46 a more sensitive rapid uLAM test.

47

48 Introduction

49 Tuberculosis (TB) remains one of the leading infectious causes of death worldwide. Most TB
50 infections occur among HIV-negative persons, but people living with HIV (PLWH) have a significantly
51 higher individual risk of TB disease and case fatality rate [1,2]. In 2022, approximately 40% of people
52 with TB disease were either not diagnosed or not reported to national disease surveillance systems [2].
53 Many people in TB-endemic settings may have limited access to care, and improved access to TB
54 diagnostics could improve treatment initiation and reduce mortality [3].

55 Lipoarabinomannan (LAM) is a pathogen biomarker that has clinical utility for diagnosing TB
56 disease [4]. LAM is a glycolipid in the Mycobacterial cell that is also secreted in exosomes and
57 subsequently excreted in urine [5,6]. Capped derivatives of LAM are TB specific and detectable in urine
58 [7–10]. The Alere Determine™ TB LAM Ag (Determine, Abbott Diagnostics, USA) is a rapid diagnostic test
59 (RDT) approved by the World Health Organization (WHO) for use among PLWH with immune
60 suppression and advanced disease [11–13]. However, this RDT is only approved for people with TB-
61 related symptoms who have a CD4 <200 cells/mm³ [14]. As such, the only WHO-approved uLAM RDT has
62 insufficient sensitivity for HIV-uninfected people with TB disease.

63 Currently, there is limited data on the concentration of urine LAM (uLAM) in HIV-uninfected
64 adults with TB disease. Prior studies of uLAM concentrations used material predominantly from
65 mycobacterial culture, which differs structurally from *in vivo* isolated LAM [15,16]. Most clinical
66 validation studies using RDTs for uLAM have focused on PLWH and evaluated performance against
67 microbiological reference standards (MRS, culture and/or GeneXpert) [17,18]. One study described two
68 small cohorts from Peru and South Africa showed mixed results, and these were underpowered for HIV-
69 uninfected participants [19]. A scaled clinical evaluation of uLAM using an ultra-sensitive LAM
70 immunoassay has not been performed in HIV-uninfected adults. Our objective was to accurately

71 quantify the concentration of uLAM and evaluate clinical diagnostic accuracy among HIV-uninfected
72 adults presenting with TB-related symptoms using highly sensitive electrochemiluminescent (ECL)
73 immunoassays [20]. We included adults with both pulmonary and extrapulmonary TB in a high TB-
74 burden, low HIV setting of Hanoi, Vietnam.

75

76 Materials and Methods

77 Study Design and Participants

78 We conducted a prospective longitudinal cohort study of adults 18 years of age or older who
79 had TB-related symptoms and presented for routine care at the National Lung Hospital (Hanoi, Vietnam)
80 between October 2021 and April 2022. Presumptive participants recruited from the pulmonary TB ward
81 (PR-PTBW) were recruited from both outpatient clinic and hospitalized respiratory inpatient ward.
82 Presumptive participants recruited from the extra pulmonary TB (PR-EPTBW) ward were recruited from
83 an EPTB inpatient ward exclusively. Exclusion criteria included having received isoniazid preventive
84 therapy within the previous 3 months, having received anti-TB treatment for more than 24 hours, or
85 having a confirmed TB diagnosis at time of recruitment. Details of study recruitment, eligibility and
86 exclusion criteria, and enrollment procedures are described in the supplementary materials. Eligibility
87 criteria were developed to be representative of people who may be evaluated for pulmonary or
88 extrapulmonary TB disease in Vietnam (see S1 Doc and S2 Doc).

89 Ethical approvals

90 The institutional review boards (IRBs) at the National Lung Hospital (NLH, Hanoi, Vietnam;
91 reference No: 26/21/CN-HDDD) and the Vietnam Ministry of Health (Hanoi, Vietnam; reference No:

92 95/CN-HDDD) approved the study and the PATH Office of Research Affairs (ORA) gave approval
93 contingent on the NLH IRB decision. Written informed consent was obtained from each eligible
94 participant prior to enrollment. The immunoassay testing at the PATH laboratory was determined as
95 non-human subjects research by the PATH ORA before any analysis was performed on the samples.

96 Study Procedures and Clinical Care

97 After enrollment, we collected sociodemographic and clinical history, and participants received
98 a clinical evaluation as part of the routine standard of care. If a participant did not have a documented
99 HIV test within the prior 6 months, then they were offered testing. HIV testing was offered using
100 Determine HIV-1/2 (Abbot Diagnostics, Scarborough, ME) or Quick Test HIV 1 & 2 (Amvi Biotech, Ho Chi
101 Minh City, Vietnam), and positive results confirmed with a second rapid test and finally an HIV ELISA
102 (Murex HIV Ag/Ab combination, DiaSorin, Saluggia, Italy). For PR-PTBW, we collected separate sputum
103 samples for Xpert MTB/RIF Ultra and MGIT liquid culture testing for all participants. For PR-EPTBW, we
104 collected non-respiratory samples (CSF, pleural fluid, etc.) for MGIT testing and Xpert MTB/RIF Ultra
105 testing, as clinically indicated. We obtained urine samples, which were frozen at -80°C immediately
106 after collection and until the lab-based testing. At 2 and 6 months after enrollment, we conducted
107 follow-up phone calls to participants to evaluate clinical status and response to TB treatment, and
108 searched clinical chart and laboratory records to ascertain incident diagnoses, repeat hospitalization, or
109 treatment initiation. Approximately 30 mLs of urine from each participant was collected for analysis with
110 the ECL immunoassays and the remaining material was retained to create a biorepository at PATH for
111 future access to developers of uLAM diagnostic products.

112 Evaluation of the clinical urine specimens using immunoassays

113 The concentration of uLAM in the urine specimens was measured using highly sensitive
114 electrochemiluminescent (ECL) immunoassays [20]. We separately evaluated two different monoclonal
115 capture antibodies, FIND28 (Foundation for Innovative New Diagnostics, Geneva, [20]) and S4-20 (Otsuka
116 Pharmaceuticals, Tokyo, Japan [21]), that were biotinylated (EZ-Link Sulfo-NHS-LC-Biotinylation Kit,
117 ThermoFisher Scientific, Waltham, MA, USA). For both capture antibodies, we used the same recombinant
118 detector antibody, A194-01 (Rutgers University [9]), which was labeled with the GOLD SULFO-TAG NHS-
119 Ester (Mesoscale Diagnostics [MSD], Rockville, MD, USA). Unbound labels (biotin or SULFO-TAG) were
120 removed using desalting columns (40 kDa MWCO Zeba Spin, Thermo).

121 The biotinylated capture antibodies were coupled to U-PLEX plates (MSD) via biotin-streptavidin
122 binding to U-PLEX linkers (MSD). Both antibody-linker conjugates were mixed with U-PLEX stop buffer
123 (MSD) at a concentration of 0.29 $\mu\text{g}/\text{mL}$ and 50 μL added to each well. Plates were incubated for 1 hour
124 with shaking at 500 rpm to allow for the antibodies to self-assemble to their discrete and complimentary
125 linker-binding sites to create a 2-plex immunoarray. Plates were washed 3X with 300 $\mu\text{L}/\text{well}$ of 1X
126 phosphate buffered saline + 0.05% Tween 20 (PBS-T, pH 7.5) using a ELX405R microplate washer (BioTek
127 Instruments Inc., Winooski, VT).

128 The analysis of uLAM was performed by adding 25 μL of Buffer 22 (MSD) to each well followed
129 by 25 μL of unconcentrated urine sample, standard, or control [20]. Plates were incubated at room
130 temperature with shaking for 1 hour at 500 rpm to allow binding of uLAM to the capture antibodies.
131 Plates were washed 3X with PBS-T and then 25 μL of SULFO-TAG detection antibody (2 $\mu\text{g}/\text{mL}$) in
132 Diluent 3 (MSD) was added to each well with shaking for 1 hour. Plates were washed 3X with PBS-T and
133 filled with 150 μL of 2X read buffer T (MSD) per well. The plates were read in a MESO QuickPlex SQ 120
134 plate reader (MSD) and the ECL from each individual array spot were measured and analyzed using the
135 Discovery Workbench v4 software (MSD). The LAM used for the standard curve was derived from the *in*
136 *vitro* culture of the TB strain Aoyama B (Nacalai USA, Inc., San Diego, CA) was dissolved in 1% BSA in

137 water (w/v). Duplicate seven-point serial dilutions of the TB LAM stock (40,000 pg/ml to 2.44 pg/mL) in
138 2% BSA/1X PBS with a negative control were used to generate calibration curves.

139 The relationship of ECL to LAM concentration was fitted to a four-parameter logistic (4-PL)
140 function. The uLAM concentration in each specimen was then calculated for both antibody pairs by
141 back-fitting the ECL data to the 4-PL fit using proprietary software from MSD. A specimen was
142 considered detected when the ECL signal of the sample correlated with signals above the limit of
143 detection in the assay (LOD) determined from the software. The LOD was calculated by the software,
144 based on signal generated by the calibrators and negative control and deviated slightly from plate to
145 plate (S1 Table). As such we used the LOD established from each plate to score the test results and so
146 afford greater accuracy, as opposed to earlier approaches of applying universal cutoff values [19,20].
147 Anything below the LOD was considered not detected. In cases where samples containing uLAM was
148 above the upper limit of detection, then the sample was diluted in 1X PBS and reassessed.

149 Reference Standards

150 The microbiological reference standard (MRS) was defined as having a positive result by either
151 Xpert Ultra or Mycobacterial culture by MGIT. For PR-PTBW, a positive microbiological test result using a
152 respiratory (sputum) specimen was required, while both a negative Xpert Ultra and MGIT culture result
153 using a respiratory specimen was required to be considered negative. Two separate sputum samples
154 were collected consecutively for Xpert Ultra and MGIT testing. The MRS for EPTB included tissue
155 samples from pleura, lymph nodes, abdomen, or meninges. Due to the difficulty in using non-respiratory
156 specimen for Xpert testing, when no Xpert testing was done for non-respiratory specimen, a negative
157 EPTB cases would consist of a negative culture using a non-respiratory specimen. The clinical reference
158 standard (CRS) was defined as either meeting the MRS definition or receiving empiric TB treatment (+/-
159 compatible chest X-ray) within 2 months of enrollment at the discretion of the treating clinicians.

160 Statistical Analyses

161 We report diagnostic accuracy of the ECL immunoassays via sensitivity, specificity, positive and
162 negative predictive values, and positive and negative likelihood ratios, along with 95% confidence
163 intervals estimated using the binomial exact (Clopper-Pearson) method. The primary reference standard
164 was the MRS, with Xpert result alone, culture result alone and CRS reference standards presented for
165 additional information. Comparison of sensitivities or specificities between the PR-PTBW and PR-EPTBW
166 groups were made using Fisher's exact test. Comparisons of sensitivities or specificities between mAb
167 pairs within the same TB group were made using McNemar test. Receiver operating characteristic (ROC)
168 curves were calculated to evaluate the overall discriminatory ability of each antibody (Ab) pair, and
169 statistically compared using paired or unpaired ROC comparisons (R package pROC, v1.18), as
170 appropriate [22]. We conducted all analyses using R version 4.1.2 [23]. All of the data generated in this
171 study can be publicly accessed at Dataverse (<https://doi.org/10.7910/DVN/AOL0LP>).

172

173 Results

174 We enrolled 780 participants from the wards (700 people with presumed PTB [PR-PTBW] and 80 people
175 with presumed EPTB PR-EPTBW]). Of these, 11 participants were excluded due to the urine collection
176 not being within 48 hours of enrollment, and 3 were excluded due to being HIV-positive, leaving 766
177 participants being evaluated by the MRS (693 PR-PTBW, 73 PR-EPTBW; Figure 1). From the PR-PTBW
178 group, 1 participant could not be validated due to culture being available only on an extrapulmonary
179 specimen (pleural fluid). From the PR-EPTBW group, 20 participants could not be validated because non-
180 pulmonary specimens were not available for validation testing. Of these, 15 had only a pulmonary
181 sample collection for validation, one had only respiratory (sputum) specimen collected for Xpert testing

182 and none for MGIT testing, and four had no sample collected for Xpert or MGIT testing. The reasons for
183 missing samples on these four were that no sample fluids were available for collection from cases of
184 presumed spinal TB, presumed intestinal TB and presumed bone TB respectively. A total of 692
185 PR=PTBW and 53 PR-EPTBW participants were included in our analyses.

186

187 **Figure 1. A STARD accuracy flowchart of the recruitment and diagnostic classification of the study**
188 **subjects from October 2021 to April 2022.** HIV, human immunodeficiency virus; PR-PTBW, PResumed
189 Pulmonary TuBerculosis from the Wards; PR-EPTBW, PResumed Extra Pulmonary TuBerculosis from the
190 Wards; Xpert, GeneXpert MTB/RIF Ultra.

191

192 Overall, the participants were predominantly male (66.7%), older (mean= 46.7 years, SD=16.0)
193 and 6% self-reported a history of recent TB exposure (Table 1). The most commonly reported symptoms
194 among the PR-PTBW group included prolonged cough (88.9%), weight loss (64.5%) and fatigue (67.6%),
195 with fewer participants reporting prolonged fever (23.0%). High proportions of participants in the PR-
196 EPTBW group reported typical presumptive TB symptoms (prolonged cough, fever, nights sweats,
197 weight loss and fatigue). Chest X-ray (CXR) indicative of TB disease was seen in 21.8% of PR-PTBW with
198 chest X-rays and 7.5% of PR-EPTBW. The majority (81.1%) of PR-PTBW were AFB smear negative, and
199 among smear positive, nearly half had a bacterial load graded as scanty or 1+. Positivity by MGIT liquid
200 culture was 40.5% in the PR-PTBW group and only 5.7% in the PR-EPTBW group. Xpert Ultra positivity
201 was 43.3% in PR-PTBW, and 22.7% (5/22) in the subset of PR-EPTBW with Xpert Ultra. Overall, 335
202 (48.5%) of PR-PTBW and just 6 (11.3%) PR-EPTBW were microbiologically confirmed as TB positive. Using
203 the CRS, 414 (59.8%) of PR-PTBW and 33 (62.3%) of PR-EPTBW were considered TB positive. MGIT also
204 identified 35 participants as having an infection with nontuberculous mycobacteria (NTM).

205 **Table 1. Characteristics of enrolled HIV negative participants with presumptive pulmonary and**
 206 **extrapulmonary TB (inpatient and outpatient recruitment, N= 745).** * Captured by question “Currently
 207 living with someone with confirmed TB diagnosis?”; **496 participants with available CXR results (444 PR-PTBW,
 208 52 PR-EPTBW); ***22 PR-EPTBW participants with non-sputum samples; denominator for PR-PTBW cohort is
 209 participants with a pulmonary specimen collected for testing, while for PR-EPTBW group is participants with a
 210 non-pulmonary specimen collected; ****Participants with inadequate specimen, NTM or not ordered set to
 211 missing for culture only reference standard.

	Presumptive pulmonary TB Patients (n=692)	Presumptive Extrapulmonary TB Patients (n=53)	Total (N=745)
Demographics			
Female Sex, n (%)	231 (33.4)	17 (32.1)	248 (33.3)
Age, mean (SD)	46.6 (15.9)	48 (17.2)	46.7 (16.0)
Hospitalization status, n (%)			
Inpatient	178 (25.7)	53 (100)	231 (31.0)
Outpatient	514 (74.3)	0 (0)	514 (69.0)
Symptom presentation, n (%)			
Cough	615 (88.9)	44 (83)	659 (88.5)
Fever	159 (23.0)	43 (81.1)	202 (27.1)
Night sweats	159 (23.0)	42 (79.2)	201 (27.0)
Weight Loss	446 (64.5)	52 (98.1)	498 (66.8)
Fatigue	468 (67.6)	53 (100)	521 (69.9)
History of recent TB exposure*, n (%)			
Yes	43 (6.2)	2 (3.8)	45 (6.0)
No	641 (92.6)	51 (96.2)	692 (92.9)
Don't Know	8 (1.2)	0 (0)	8 (1.1)
Chest X-Ray Indicative of TB**, n (%)	97 (21.8)	4 (7.5)	101 (20.3)
AFB smear positive, n (%)	131 (18.9)	0 (0)	131 (17.6)
AFB smear positivity, n (%)			
Scanty	12 (9.1)	0 (0)	12 (9.1)
1+	65 (49.6)	0 (0)	65 (49.6)
2+	32 (24.4)	0 (0)	32 (24.4)
3+	22 (16.8)	0 (0)	22 (16.8)
Xpert Ultra positive***, n (%)	300 (43.3)	5 (22.7)	305 (42.7)
Rif resistance detected, n (%)	12 (4.0)	0 (0)	12 (1.6)
MGIT liquid culture positivity, n (%)			
Positive	280 (40.5)	3 (5.7)	283 (37.9)
NTM	35 (5.1)	0 (0)	35 (4.7)
Negative	375 (54.2)	50 (94.3)	425 (50.3)
Specimen contamination/not ordered	2 (0.3)	0 (0)	2 (0.3)
Microbiological Reference Standard, n (%)	335 (48.5)	6 (11.3)	341 (45.8)
Xpert Ultra positive***, n (%)	300 (43.4)	5 (22.7)	305 (42.7)
Culture positive****, n (%)	280 (42.7)	3 (5.7)	283 (40.0)
Clinical Reference Standard, n (%)	414 (59.8)	33 (62.3)	447 (60.0)

212

213 The analysis of the uLAM concentrations showed the FIND 28:A194-01 (F/A) Ab pair had a
 214 greater number of positive tests in both PR-PTBW and PR-EPTBW cohorts (Table 2). A similar percentile
 215 of PR-PTBW and PR-EPTBW had uLAM were detected via F/A (30.6% vs 34.0%, $p=0.643$) and also S4-

216 20/A194-01 (S/A; 20.1% vs 15.1%, $p=0.475$) when not stratifying by MRS status. When pooled, F/A
217 detected positivity was 230 (30.9%) while S/A was 147 (19.7%). Among participants with uLAM detected
218 by F/A, the median estimated uLAM concentration was similar with PR-PTBW at 79.0 pg/mL
219 (interquartile range [IQR] 31.8 - 290.5), and 76.5 pg/mL (IQR 34.3-190.0) for PR-EPTBW. When stratifying
220 by MRS status, median estimated uLAM concentration appeared higher for MRS-positive PR-PTBW
221 (110.0 pg/mL vs. 45.0 pg/mL) compared to MRS-negative PR-PTBW, higher among MRS-negative
222 compared to MRS-positive PR-EPTBW (44.0 pg/mL vs 77.0 mg/mL). Among participants with uLAM
223 detected in their urine using the S/A pair, the median estimated uLAM concentration among PR-PTBW
224 was 55.0 pg/mL, (IQR 27.0 - 139.5), and 36.0 pg/mL (IQR 29.0-46.3) for PR-EPTBW. When stratifying by
225 MRS status, median estimated uLAM concentration appeared higher for MRS-positive PR-PTBW (57.0
226 pg/mL vs. 21.0 pg/mL) compared to MRS-negative PR-PTBW, as well as for PR-EPTBW (50.5 pg/mL vs.
227 33.0 pg/mL) respectively. When viewing the distribution of estimated uLAM concentrations for the same
228 participants using the two antibody pairs, the F/A pair appears to estimate a higher concentration of
229 78.0 pg/mL as compared to the S4-20:A194-01 Ab pair with 51.0 pg/mL (Table 2 and Figure 2). Only 87
230 (32.9%) PR-PTBW and 5 (23.8%) PR-EPTBW were uLAM positive by both F/A and S/A pairs, indicating a
231 high degree of discordant detection (S1 Fig).

232

233 **Table 2. ECL test results of study participants using S/A and F/A Ab pairs (N=745).** The number of S/A
 234 and F/A positive results for both PR-PTBW and PR-EPTBW, and the pooled data with the median uLAM
 235 concentration (pg/mL) among participants with detected uLAM. Abbreviations: PR-PTBW, presumptive
 236 pulmonary TB from ward; PR-EPTBW, presumptive extra pulmonary TB from ward; MRS, microbiological
 237 reference standard; ECL, electrochemiluminescent; S/A, S4-20/A194-01 Ab pair; N, number; F/A,
 238 FIND28/A194-01 Ab pair. IQR, interquartile range.

ECL Test Results	PR-PTBW (N=692)		PR-EPTBW (N=53)		Pooled (N=745)
	MRS + (n=335)	MRS - (n=357)	MRS + (n=6)	MRS - (n=47)	
S/A positive result – N (%)	130 (38.8)	9 (2.5)	2 (33.3)	6 (12.8)	147 (19.7)
S/A Median uLAM conc. – pg/mL (IQR)	57.0.0 (29.0-150.0)	21.0 (17.0 – 26.0)	50.5 (50.25 – 50.75)	33.0 (23.0 – 37.0)	51.0 (27.0 – 125.0)
F/A Positive result – N (%)	137 (40.9)	75 (21.0)	3 (50.0)	15 (31.9)	230 (30.9)
F/A Median uLAM conc. – pg/mL (IQR)	110.0 (36.0-374.0))	45.0 (29.5 – 104.0)	44.0 (30.5-93.0))	33.0 (23.0 – 37.0)	78.0 (31.2 – 284.0)

239
 240 **Figure 2. The range of uLAM concentrations quantitated by the ECL immunoassay using antibody pairs**
 241 **S/A and F/A (N=745).**

242 When evaluating the diagnostic performance of uLAM detection using the S/A pair the overall
 243 sensitivity was low in this HIV negative population. A similar proportion of microbiologically confirmed
 244 participants were correctly identified in PR-PTBW (sensitivity: 39%, 95% CI: 34-44%) and PR-EPTBW
 245 (sensitivity: 33%, 95% CI: 4-78%), (Table 3). However, true negatives were more accurately identified in
 246 PR-PTBW (specificity: 97%, 95% CI: 95-99%) compared to PR-EPTBW (specificity: 87%, 95% CI: 74-95%).
 247 When using the CRS as the reference standard instead, test sensitivity was 32% (95% CI: 28-37%) in PR-
 248 PTBW and 24% (95% CI: 11 – 42%) in the PR-EPTBW, and specificity was very similar in both groups at
 249 98%-100%. When the immunoassay data for S/A and F/A was pooled and also compared to the MRS,
 250 Xpert Ultra, MGIT and CRS data for both PR-PTBW (S2 Table) and PR-EPTBW (S3 Table). The sensitivity
 251 for PR-PTBW was 55% (95% CI: 0.490.60%) and the specificity was 78% (95% CI: 0.73-0.82%). With the

252 PR-EPTBW group, sensitivity was similar at 50% (95% CI: 0.12-0.88%) and with a specificity of 62% (95%
 253 CI: 0.46-0.75%).

254 **Table 3. The diagnostic sensitivity and specificity of the ECL S/A and F/A immunoassays in the PR-**
 255 **PTBW and PR-EPTBW groups as compared to the microbiologic reference standards (MRS), Xpert,**
 256 **MGIT, and the clinical reference standard (CRS) used in the diagnosis of TB disease.** The positive
 257 predictive values (PPV), negative predictive values (NPV), positive likelihood ratios (PLR) and negative
 258 likelihood ratios (NLR) were also calculated for each. Abbreviations: N, number; TP, true positive; TN,
 259 true negative; FN, false negative; FP, false positive; CI, confidence interval; S/A, S4-20/A194-01; F/A,
 260 FIND28/A194-01; PR-PTBW, presumed pulmonary tuberculosis from ward; MGIT, mycobacterial growth
 261 indicator tube; MRS, microbiological reference standard; CRS, clinical reference standard ; PR-EPTBW,
 262 presumed extra pulmonary tuberculosis from ward.

Reference Standard	N	Positive by reference standard		Negative by reference standard		PPV (95% CI)	NPV (95% CI)	PLR (95% CI)	NLR (95% CI)
		TP/TP+FN	Sensitivity (95% CI)	TN/TN+FP	Specificity (95% CI)				
S/A PR-PTBW									
MRS	692	130/335	0.39 (0.34, 0.44)	348/357	0.97 (0.95, 0.99)	0.94 (0.88, 0.97)	0.63 (0.59, 0.67)	15.4 (7.96, 29.75)	0.63 (0.58, 0.68)
Xpert Ultra	692	123/300	0.41 (0.35, 0.47)	376/392	0.96 (0.93, 0.98)	0.88 (0.82, 0.93)	0.68 (0.64, 0.72)	15.4 (7.96, 29.75)	0.62 (0.56, 0.68)
MGIT [§]	655	112/280	0.40 (0.34, 0.46)	356/375	0.95 (0.92, 0.97)	0.95 (0.92, 0.97)	0.68 (0.64, 0.72)	7.89 (4.98, 12.52)	0.63 (0.57, 0.70)
CRS	692	133/414	0.32 (0.28, 0.37)	272/278	0.98 (0.95, 0.99)	0.96 (0.91, 0.98)	0.49 (0.45, 0.53)	14.88 (6.66, 33.25)	0.69 (0.65, 0.74)
S/A PR-EPTBW									
MRS	53	2/6	0.33 (0.04, 0.78)	41/47	0.87 (0.74, 0.95)	0.25 (0.03, 0.65)	0.91 (0.79, 0.98)	2.61 (0.67, 10.13)	0.76 (0.43, 1.36)
Xpert Ultra*	22	2/5	0.40 (0.05, 0.85)	11/17	0.65 (0.38, 0.86)	0.25 (0.03, 0.65)	0.79 (0.49, 0.95)	1.13 (0.32, 3.96)	0.93 (0.42, 2.06)
MGIT	53	1/3	0.33 (0.01, 0.91)	43/50	0.86 (0.73, 0.94)	0.12 (0, 0.53)	0.96 (0.85, 0.99)	2.38 (0.42, 13.59)	0.78 (0.35, 1.74)
CRS	53	8/33	0.24 (0.11, 0.42)	20/20	1.00 (0.83, 1.00)	1.00 (0.63, 1.00)	0.44 (0.30, 0.60)	Inf (NA, Inf)	0.76 (0.62, 0.92)
F/A PR-PTBW									
MRS	692	137/335	0.41 (0.36, 0.46)	282/357	0.79 (0.74, 0.83)	0.65 (0.58, 0.71)	0.59 (0.54, 0.63)	1.95 (1.53, 2.47)	0.75 (0.67, 0.83)
Xpert Ultra	692	124/300	0.41 (0.36, 0.47)	304/392	0.78 (0.73, 0.82)	0.58 (0.52, 0.65)	0.63 (0.59, 0.68)	1.84 (1.47, 2.31)	0.76 (0.68, 0.84)
MGIT [§]	655	118/280	0.42 (0.36, 0.48)	290/375	0.77 (0.73, 0.81)	0.58 (0.51, 0.65)	0.64 (0.60, 0.69)	1.86 (1.47, 2.34)	0.75 (0.67, 0.84)
CRS	692	154/414	0.37 (0.33, 0.42)	220/278	0.79 (0.74, 0.84)	0.73 (0.66, 0.79)	0.46 (0.41, 0.50)	1.78 (1.37, 2.31)	0.79 (0.72, 0.87) ^v
F/A PR-EPTBW									
MRS	53	3/6	0.50 (0.12, 0.88)	32/47	0.68 (0.53, 0.81)	0.17 (0.04, 0.41)	0.91 (0.77, 0.98)	1.57 (0.64, 3.86)	0.73 (0.32, 1.67)
Xpert Ultra*	22	2/5	0.40 (0.05, 0.85)	11/17	0.65 (0.38, 0.86)	0.25 (0.03, 0.65)	0.79 (0.49, 0.95)	1.13 (0.32, 3.96)	0.93 (0.42, 2.06)
MGIT [§]	53	2/3	0.67 (0.09, 0.99)	34/50	0.68 (0.53, 0.80)	0.11 (0.01, 0.35)	0.97 (0.85, 1)	2.08 (0.85, 5.11)	0.49 (0.10, 2.46)
CRS	53	13/33	0.39 (0.23, 0.58)	15/20	0.75 (0.51, 0.91)	0.72 (0.47, 0.90)	0.43 (0.26, 0.61)	1.58 (0.66, 3.76)	0.81 (0.56, 1.17)

263
 264 [§] Participants with inadequate specimen, NTM, or not ordered set to missing for culture only reference standard.
 265 * 22 participants had a non-sputum sample taken for Xpert Ultra testing for EPTB; participants with a sputum sample taken
 266 were excluded from analysis. The 22 shown due to having a non-sputum sample for Xpert Ultra testing are likely not a random
 267 sample of the total 53 participants in the table, and diagnostic performance estimates should be interpreted with caution.

268 When evaluating the diagnostic performance of uLAM detection using the F/A pair, sensitivity
269 was 41% (95% CI: 36-46%) in PR-PTBW, and 50% (95% CI: 12-88%) in PR-EPTBW group ($p=0.693$) (Table
270 3). True negatives may have been somewhat more accurately identified using F/A in PR-PTBW
271 (Specificity: 79%, 95% CI: 74-83%) compared to PR-EPTBW (Specificity: 68%, 95% CI: 53-81%, $p=0.096$).
272 When comparing performance using the CRS as the reference standard, F/A test sensitivity and
273 specificity were very similar in PR-PTBW and PR-EPTBW, with sensitivity of 37%-39% and specificity of
274 75-79%.

275 When assessing performance between the S/A and F/A Ab pairs, their sensitivity was similar in
276 the PR-PTBW ($p=0.356$). However, the S/A pair had significantly higher specificity (97% vs 79%,
277 $p<0.0001$) and PPV (94% vs 65%, $p<0.0001$). Similar diagnostic performances were observed between
278 both Ab pairs in PR-PTBW when using CRS as the reference standard. Amongst PR-EPTBW, while
279 sensitivity against MRS appeared to be slightly higher with F/A, a detectable difference in performance
280 was not observed in this small EPTB MRS positive group ($n=6$, 50% vs 33%, $p>0.99$). However, specificity
281 was higher for the S/A than for F/A pair (87% vs 68%, $p=0.039$) in PR-EPTBW. When comparing the
282 discriminatory ability at varying estimated concentration thresholds, the S/A pair showed greater
283 discriminatory ability compared to F/A pair in PR-PTBW (area under the curve [AUC]=0.744 vs 0.628,
284 $p<0.0001$) and PR-EPTBW (AUC=0.755 vs 0.5339, $p=0.045$) (Figure 3).

285 **Figure 3. Receiver operating characteristic curves comparing estimated uLAM concentrations (pg/mL)**
286 **derived from the S/A and F/A Ab pairs to microbiological reference standard (MRS), all groups.**

287 Receiver operating curves comparing the ECL immunoassay uLAM concentrations to the MRS, using 2
288 separate antibody pairs for both PR-PTBW & PR-EPTBW. Comparison to the MRS using the S4-20:A194-
289 01 (S/A) pair is shown in blue, with performance PR-PTBW (AUC=0.744, $n=692$) shown in the solid line
290 and performance in PR-EPTBW (AUC=0.755, $n=53$) shown in the dashed line. Comparison to the MRS

291 using the FIND 28:A194-01 (F/A) pair is shown in green, with performance in PR-PTBW (AUC, 0.628,
292 n=692) shown in the solid line and performance in PR-EPTBW (AUC=0.539, n=53) shown in the dashed
293 line. Discriminatory ability using the S4-20:A194-01 Ab pair was high for both PR-PTBW & PR-EPTBW
294 compared to the FIND-28:A194-01 pair.

295

296 Discussion

297 We have completed the largest study to date on a HIV negative cohort presenting with
298 presumptive TB disease wherein we assessed the diagnostic performance of a highly sensitive
299 immunoassay platform to detect the levels of uLAM from urine as compared to the MRS. In a cohort of
300 HIV-uninfected adults with either presumptive PTB or EPTB disease, uLAM was detectable in less than
301 half of people and the concentrations observed were typically low. The F/A pair had slightly higher
302 sensitivity than the S/A pair (41% vs. 39%) but also had a much lower specificity (79% vs. 97%). The
303 routine standard of care included sputum smear microscopy wherein the majority of PTB patients were
304 sputum smear-negative (18.9% smear positivity), suggesting that a large proportion of participants in
305 this study had subclinical TB with a relatively low bacterial disease burden and thus less availability of
306 LAM at the site of infection and potentially also in the urine. Others have also noted significant
307 differences in uLAM levels based on the geographical sites, presumably highlighting that different TB
308 lineages may affect the levels of uLAM observed in patient urine [15,19]. We also investigated the
309 performance of the immunoassays with urine collected from either pulmonary or EPTB. No significant
310 differences was seen between these groups with either antibody pair although it should be noted the
311 size of the EPTB group (N = 53, MRS TB positive 6) was much smaller than the PTB group (N = 692, MRS
312 TB positive 335).

313 Many previous cohorts that have been screened for uLAM in urine typically have a higher
314 prevalence of HIV positive comorbidity and as such often have higher concentrations of uLAM in their
315 urine. The results from this study are less optimistic than from other studies who reported significantly
316 higher sensitivities when detecting uLAM in HIV negative cohorts [24–26]. Broger et al analyzed
317 concentrated urine from 372 HIV-negative participants from Peru and South Africa using the S/A assay
318 on the MSD platform with the pooled performance data having a sensitivity of 66.7% (95% CI 57.5%-
319 74.7%) and a specificity of 98.1% (95% CI 95.6%-99.2%) [19]. It was also noted in the supplemental data
320 in a subgroup analysis that the sensitivity was much higher in Peru (78.5%) compared with South Africa
321 (37.5%), with specificities of 100% and 95.3% respectively, the latter data reflecting that the poor
322 sensitivity of uLAM detection on the MSD platform has been observed [19]. While we used the same
323 platform and ECL assays as previously used in an earlier smaller scale study on an HIV negative cohort
324 [20], we used a different methodology for establishing the cut off. In the work by Sigal et al. they
325 assigned cut off value of 11 pg/mL to the S/A assay results [20], while Broger et al used a cutoff of 5.4
326 pg/mL [19], noting that such a cutoff would not be applicable to other LAM assays. Where a cutoff
327 allows for practicality and comparative analysis, using this ultrasensitive method for uLAM is still
328 relatively new. Furthermore, using plate based LOD allows for a more standardized and objective
329 measure of a given analyte, especially one as heterogenous as LAM [9,15,25], where there are inherent
330 differences in the antibody pairs being assessed respective to sensitivity and specificity. Once use of a
331 specific antibody pair is normalized, a generalizable cutoff would be expeditious in studying LAM in
332 various populations. The negative association of glycosuria on uLAM concentration with A194-01 and an
333 S4-20 derivative has been noted, we did not perform urinalysis on the samples used and so a greater
334 proportion of participants with glycosuria would influence our results [25].

335 Other studies have measured uLAM using different methods. One study reported the use of
336 nanocages hosting a dye as the capture ligand in association with three detector antibodies including

337 A194-01 and MoAB1, a recombinant derivative of S4-20 [27]. The nanocages offered a 50-fold increase
338 in uLAM concentration and overall, the pooled diagnostic accuracy from the three antibodies was 90%
339 sensitivity at 73.5% specificity [25,27]. A further study had 160 participants who were predominantly
340 HIV negative and this study also reported very high sensitivity and specificity using the antibody pair CS-
341 35/A194-01 but the authors acknowledge that the study focused on predominantly TB positive cohorts
342 (140 TB positive from 160 samples, many of which were smear 1+ or greater) and so diagnostic accuracy
343 was not established due to the low number of TB negative cases included (N = 10) [28]. This study also
344 included proteinase K pretreatment and mild heating (55°C) which significantly improved the
345 sensitivities of the immunoassay used. In addition, all samples were derived for Peru and we speculate
346 that this data augments the observations for Broger et al where significantly more uLAM was seen in
347 samples from this country.

348 There are several limitations to this study. First, all of the ECL testing was conducted on
349 previously frozen and not fresh urine specimens. While banked samples are more convenient for high
350 throughput testing, long-term freezing may diminish uLAM levels [29,30]. While samples were
351 maintained at -80°C on the day of collection until the time of testing, we did not assess the time from
352 specimen collection to freezing. The clinical laboratory protocol did note to store the samples at 4°C
353 soon after collection and to then store aliquots at -80°C once 15 mL conical tubes had been filled. There
354 may also have been additive effects caused by the COVID-19 pandemic on exposure risk to TB while
355 under lock down and in changes to care seeking behaviors due to the pandemic. The powered
356 calculations for the study protocol were based on pre-pandemic national TB prevalence rates wherein
357 an estimated 271 confirmed TB positive cases would be identified within a cohort of 780. Further,
358 greater awareness of the risks of respiratory disease may have induced earlier care seeking in some
359 cases and as such cases of TB were identified earlier and in addition lack of access to care during lock
360 downs may have led to cases of self-clearance of TB.

361 The predominant lineage of the *Mycobacterium tuberculosis* strain may also play a role in
362 variation of the median level of uLAM detected [15,25]. In this work, we also took a slightly different
363 approach to ascribing a detection threshold to score the presence of uLAM based on the LOD
364 determined on a plate-by-plate basis via each standard curve versus a uniform cut off for all data [19-
365 20]. While we have confidence in the quality of the data generated to describe the PTB cohort based on
366 the number of participants and the relative ease with which diagnostic results could be applied to score
367 as PTB or TB negative. The study was not designed to enroll a sufficient number of PR-EPTBW to allow
368 statistical comparisons between PR-EPTBW and PR-PTBW; 53 versus 692 respectively and added to this
369 were limitations in the collection and use of appropriate samples to microbiologically confirm EPTB
370 diagnosis. Finally, the prevalence of bacteriologically confirmed TB is higher than expected in a
371 population of presumptive adults presenting at both outpatient and inpatient settings. It is important to
372 note that study enrollment coincided with Vietnam's surge in SARS-CoV-2 infections associated with the
373 spread of the Omicron variant, which could have potentially affected healthcare-seeking behavior due
374 to mobility restrictions and increased screening at health facilities. This could potentially explain the low
375 proportion of reported febrile illness observed in this cohort, and could potentially result in patients
376 only seeking care with increased TB disease severity. However, the higher proportion of AFB smear
377 microscopy results with scanty/1+ grading indicate that this may not be the case. Nonetheless, it is
378 important to take this into consideration when evaluating the positive and negative predictive test
379 values, which are influenced by underlying disease prevalence.

380 Biomolecules in urine samples may present challenges to sensitivity, and several studies have
381 investigated specimen preparation methods to improve access for the antibody to its target epitope
382 [31]. Improved methods include specimen preparation via enzymatic or inhibitor specific treatments to
383 release sequestered uLAM from complexes or remove inhibitory compounds such as lipids or protein-
384 uLAM complexes [32–34]. The enrichment of uLAM concentration in urine specimens has been achieved

385 via a variety of methods using either the direct capture of uLAM via specific antibodies [35,36], a uLAM
386 specific chemical ligand or via proteolysis, chemical treatment and ultrafiltration [27,37]. Others have
387 focused on improving high sensitivity assays via platform improvement, novel antibodies, and the
388 application of machine learning algorithms to improve diagnostic accuracy [38–40]. The application of
389 multiple antibodies, each targeting different LAM epitopes, has also been demonstrated to increase
390 diagnostic performance [25]. A key component to this work is to ensure that clinical samples are used
391 early in the product development phase and that clinical evaluation should encompass multiple
392 populations as evidenced in this and other work where the detection of uLAM in the urine of TB positive
393 HIV negative patients varies [19,28,38].

394 In conclusion, from a large HIV-negative cohort in Vietnam, high-sensitivity immunoassay testing
395 for uLAM did not reach the levels noted in the TPP criteria for an effective diagnostic test for TB disease.
396 Developing a better uLAM assay to diagnose the majority of people with TB disease may require novel
397 antibodies, a urine concentration step, or both. Nonetheless, developing non-sputum based RDTs to
398 diagnose people with TB disease needs to remain a global health priority.

399 References

- 400 1. Getahun H, Ford N. Tackling the persistent burden of tuberculosis among people living with HIV. *J*
401 *Int AIDS Soc.* 2016;19: 21002. doi:10.7448/IAS.19.1.21002
- 402 2. Global tuberculosis report 2022. [cited 1 May 2023]. Available: [https://www.who.int/publications-](https://www.who.int/publications-detail-redirect/9789240061729)
403 [detail-redirect/9789240061729](https://www.who.int/publications-detail-redirect/9789240061729)
- 404 3. UNITAID 2017 TUBERCULOSIS Diagnostics Technology Landscape 5th Edition, May 2017. [cited 1
405 May 2023]. Available: [https://unitaid.org/assets/2017-Unitaid-TB-Diagnostics-Technology-](https://unitaid.org/assets/2017-Unitaid-TB-Diagnostics-Technology-Landscape.pdf)
406 [Landscape.pdf](https://unitaid.org/assets/2017-Unitaid-TB-Diagnostics-Technology-Landscape.pdf)
- 407 4. Flores J, Cancino JC, Chavez-Galan L. Lipoarabinomannan as a Point-of-Care Assay for Diagnosis of
408 Tuberculosis: How Far Are We to Use It? *Front Microbiol.* 2021;12: 638047.
409 doi:10.3389/fmicb.2021.638047
- 410 5. Bhatnagar S, Shinagawa K, Castellino FJ, Schorey JS. Exosomes released from macrophages
411 infected with intracellular pathogens stimulate a proinflammatory response in vitro and in vivo.
412 *Blood.* 2007;110: 3234–3244. doi:10.1182/blood-2007-03-079152
- 413 6. Cheng Y, Schorey JS. Exosomes carrying mycobacterial antigens can protect mice against
414 *Mycobacterium tuberculosis* infection. *Eur J Immunol.* 2013;43: 3279–3290.
415 doi:10.1002/eji.201343727
- 416 7. Hamasur B, Bruchfeld J, Haile M, Pawlowski A, Bjorvatn B, Källenius G, et al. Rapid diagnosis of
417 tuberculosis by detection of mycobacterial lipoarabinomannan in urine. *J Microbiol Methods.*
418 2001;45: 41–52. doi:10.1016/s0167-7012(01)00239-1
- 419 8. Corrigan DT, Ishida E, Chatterjee D, Lowary TL, Achkar JM. Monoclonal antibodies to
420 lipoarabinomannan/arabinomannan - characteristics and implications for tuberculosis research
421 and diagnostics. *Trends Microbiol.* 2022; S0966-842X(22)00174–3. doi:10.1016/j.tim.2022.07.001
- 422 9. Choudhary A, Patel D, Honnen W, Lai Z, Prattipati RS, Zheng RB, et al. Characterization of the
423 Antigenic Heterogeneity of Lipoarabinomannan, the Major Surface Glycolipid of *Mycobacterium*
424 *tuberculosis*, and Complexity of Antibody Specificities toward This Antigen. *J Immunol.* 2018;200:
425 3053–3066. doi:10.4049/jimmunol.1701673
- 426 10. World Health Organization, Others. High-priority target product profiles for new tuberculosis
427 diagnostics: report of a consensus meeting. Geneva, Switzerland: WHO; 2014.
- 428 11. World Health Organization. The use of lateral flow urine lipoarabinomannan assay (LF-LAM) for
429 the diagnosis and screening of active tuberculosis in people living with HIV. Policy Guidance.
430 Geneva, Switzerland; 2015 p. 63. Available: [https://www.who.int/tb/areas-of-](https://www.who.int/tb/areas-of-work/laboratory/policy_statement_lam_web.pdf)
431 [work/laboratory/policy_statement_lam_web.pdf](https://www.who.int/tb/areas-of-work/laboratory/policy_statement_lam_web.pdf)
- 432 12. World Health Organization. Lateral flow urine lipoarabinomannan assay (LF-LAM) for the diagnosis
433 of active tuberculosis in people living with HIV. Policy update. Geneva; 2019 p. 28.

- 434 13. World Health Organization. WHO consolidated guidelines on tuberculosis: module 3: diagnosis:
435 rapid diagnostics for tuberculosis detection. 2021 update. Geneva: World Health Organization;
436 2021. Available: <https://apps.who.int/iris/handle/10665/342331>
- 437 14. WHO updates policy for the use of lateral flow urine lipoarabinomannan assay (LF-LAM) for
438 diagnosing active tuberculosis in people living with HIV. [cited 12 Jun 2023]. Available:
439 [https://www.who.int/news/item/04-11-2019-who-updates-policy-for-the-use-of-lateral-flow-](https://www.who.int/news/item/04-11-2019-who-updates-policy-for-the-use-of-lateral-flow-urine-lipoarabinomannan-assay-(lf-lam))
440 [urine-lipoarabinomannan-assay-\(lf-lam\)](https://www.who.int/news/item/04-11-2019-who-updates-policy-for-the-use-of-lateral-flow-urine-lipoarabinomannan-assay-(lf-lam))
- 441 15. De P, Amin AG, Flores D, Simpson A, Dobos K, Chatterjee D. Structural implications of
442 lipoarabinomannan glycans from global clinical isolates in diagnosis of Mycobacterium tuberculosis
443 infection. *J Biol Chem.* 2021;297: 101265. doi:10.1016/j.jbc.2021.101265
- 444 16. De P, Shi L, Boot C, Ordway D, McNeil M, Chatterjee D. Comparative Structural Study of Terminal
445 Ends of Lipoarabinomannan from Mice Infected Lung Tissues and Urine of a Tuberculosis Positive
446 Patient. *ACS Infect Dis.* 2020;6: 291–301. doi:10.1021/acscinfecdis.9b00355
- 447 17. Bjerrum S, Schiller I, Dendukuri N, Kohli M, Nathavitharana RR, Zwerling AA, et al. Lateral flow
448 urine lipoarabinomannan assay for detecting active tuberculosis in people living with HIV.
449 *Cochrane Database Syst Rev.* 2019;10: CD011420. doi:10.1002/14651858.CD011420.pub3
- 450 18. Shah M, Hanrahan C, Wang ZY, Dendukuri N, Lawn SD, Denkinger CM, et al. Lateral flow urine
451 lipoarabinomannan assay for detecting active tuberculosis in HIV-positive adults. *Cochrane*
452 *Database Syst Rev.* 2016;2016: CD011420. doi:10.1002/14651858.CD011420.pub2
- 453 19. Broger T, Nicol MP, Sigal GB, Gotuzzo E, Zimmer AJ, Surtie S, et al. Diagnostic accuracy of 3 urine
454 lipoarabinomannan tuberculosis assays in HIV-negative outpatients. *J Clin Invest.* 2020;130: 5756–
455 5764. doi:10.1172/JCI140461
- 456 20. Sigal GB, Pinter A, Lowary TL, Kawasaki M, Li A, Mathew A, et al. A Novel Sensitive Immunoassay
457 Targeting the 5-Methylthio-d-Xylofuranose-Lipoarabinomannan Epitope Meets the WHO’s
458 Performance Target for Tuberculosis Diagnosis. *J Clin Microbiol.* 2018;56. doi:10.1128/JCM.01338-
459 18
- 460 21. Kawasaki M, Echiverri C, Raymond L, Cadena E, Reside E, Gler MT, et al. Lipoarabinomannan in
461 sputum to detect bacterial load and treatment response in patients with pulmonary tuberculosis:
462 Analytic validation and evaluation in two cohorts. *PLOS Med.* 2019;16: e1002780.
463 doi:10.1371/journal.pmed.1002780
- 464 22. Robin X, Turck N, Hainard A, Tiberti N, Lisacek F, Sanchez J-C, et al. pROC: Display and Analyze ROC
465 Curves. 2023. Available: <https://cran.r-project.org/web/packages/pROC/index.html>
- 466 23. R Core Team (2021). R: A language and environment for statistical computing. Vienna, Austria.: R
467 Foundation for Statistical Computing; Available: URL <https://www.R-project.org/>
- 468 24. Amin AG, De P, Spencer JS, Brennan PJ, Daum J, Andre BG, et al. Detection of lipoarabinomannan
469 in urine and serum of HIV-positive and HIV-negative TB suspects using an improved capture-
470 enzyme linked immunoabsorbent assay and gas chromatography/mass spectrometry. *Tuberc*
471 *Edinb.* 2018;111: 178–187. doi:10.1016/j.tube.2018.06.004

- 472 25. Magni R, Ruga F, Alsaab F, Sharif S, Howard M, Espina V, et al. Lipoarabinomannan antigenic
473 epitope differences in tuberculosis disease subtypes. *Sci Rep.* 2020;10: 13944.
474 doi:10.1038/s41598-020-70669-9
- 475 26. Sigal GB, Segal MR, Mathew A, Jarlsberg L, Wang M, Barbero S, et al. Biomarkers of Tuberculosis
476 Severity and Treatment Effect: A Directed Screen of 70 Host Markers in a Randomized Clinical Trial.
477 *EBioMedicine.* 2017;25: 112–121. doi:10.1016/j.ebiom.2017.10.018
- 478 27. Paris L, Magni R, Zaidi F, Araujo R, Saini N, Harpole M, et al. Urine lipoarabinomannan glycan in
479 HIV-negative patients with pulmonary tuberculosis correlates with disease severity. *Sci Transl*
480 *Med.* 2017;9. doi:10.1126/scitranslmed.aal2807
- 481 28. Amin AG, De P, Graham B, Calderon RI, Franke MF, Chatterjee D. Urine lipoarabinomannan in HIV
482 uninfected, smear negative, symptomatic TB patients: effective sample pretreatment for a
483 sensitive immunoassay and mass spectrometry. *Sci Rep.* 2021;11: 2922. doi:10.1038/s41598-021-
484 82445-4
- 485 29. Broger T, Muyoyeta M, Kerkhoff AD, Denking CM, Moreau E. Tuberculosis test results using fresh
486 versus biobanked urine samples with FujiLAM. *Lancet Infect Dis.* 2020;20: 22–23.
487 doi:10.1016/S1473-3099(19)30684-X
- 488 30. Connelly JT, Grant B, Munsamy V, Pym A, Somoskovi A. Lipoarabinomannan point-of-care tests:
489 evaluation with fresh samples needed. *Lancet Infect Dis.* 2019;19: 1053. doi:10.1016/S1473-
490 3099(19)30475-X
- 491 31. Correia-Neves M, Fröberg G, Korshun L, Viegas S, Vaz P, Ramanlal N, et al. Biomarkers for
492 tuberculosis: the case for lipoarabinomannan. *ERJ Open Res.* 2019;5.
493 doi:10.1183/23120541.00115-2018
- 494 32. García JI, Kelley HV, Meléndez J, de León RAA, Castillo A, Sidiki S, et al. Improved Alere Determine
495 Lipoarabinomannan Antigen Detection Test for the Diagnosis of Human and Bovine Tuberculosis
496 by Manipulating Urine and Milk. *Sci Rep.* 2019;9: 18012. doi:10.1038/s41598-019-54537-9
- 497 33. Hamasur, B. SpeClean: urine sample treatment method for ultra-sensitive LAM diagnostics. Poster.
498 50th Union World Conference on Lung Health; 2019; Hyderabad, India.
- 499 34. Panraksa Y, Amin AG, Graham B, Henry CS, Chatterjee D. Immobilization of Proteinase K for urine
500 pretreatment to improve diagnostic accuracy of active tuberculosis. *PloS One.* 2021;16: e0257615.
501 doi:10.1371/journal.pone.0257615
- 502 35. Connelly JT, Andama A, Grant BD, Ball A, Mwebe S, Asege L, et al. Field evaluation of a prototype
503 tuberculosis lipoarabinomannan lateral flow assay on HIV-positive and HIV-negative patients. *PloS*
504 *One.* 2021;16: e0254156. doi:10.1371/journal.pone.0254156
- 505 36. Shapiro A, Wittwer T, Ngwane N, Magcaba Z, Mullins B, Aamotsbakken R, et al. A point-of-care test
506 to concentrate and detect urine LAM for TB diagnosis: results from the first-in-human study of
507 FLOW-TB. Abstract presented at: 50th World Conference on Lung Health of the International
508 Union Against Tuberculosis and Lung Disease. 2019.

- 509 37. Cantera JL, Rashid AA, Lillis LM, Peck RB, Drain PK, Shapiro AE, et al. Isolation and purification of
510 lipoarabinomannan from urine of adults with active TB. *Int J Tuberc Lung Dis Off J Int Union Tuberc*
511 *Lung Dis*. 2023;27: 75–77. doi:10.5588/ijtld.22.0372
- 512 38. Cantera JL, Lillis LM, Peck RB, Moreau E, Schouten JA, Davis P, et al. Performance of novel
513 antibodies for lipoarabinomannan to develop diagnostic tests for *Mycobacterium tuberculosis*.
514 *PLoS ONE*. 2022;17. doi:10.1371/journal.pone.0274415
- 515 39. Huang Y, Darr CM, Gangopadhyay K, Gangopadhyay S, Bok S, Chakraborty S. Applications of
516 machine learning tools for ultra-sensitive detection of lipoarabinomannan with plasmonic grating
517 biosensors in clinical samples of tuberculosis. *PloS One*. 2022;17: e0275658.
518 doi:10.1371/journal.pone.0275658
- 519 40. Wood A, Barizuddin S, Darr CM, Mathai CJ, Ball A, Minch K, et al. Ultrasensitive detection of
520 lipoarabinomannan with plasmonic grating biosensors in clinical samples of HIV negative patients
521 with tuberculosis. *PloS One*. 2019;14: e0214161. doi:10.1371/journal.pone.0214161

522 Acknowledgements

523 The project team would like to thank each of the participants in this study for their willingness to enroll,
524 provide urine samples to support this work, and to permit the use of their test data. We would also like
525 to acknowledge the staff of the National Lung Hospital of Hanoi for their dedication and commitment to
526 the implementation and operation of this project.

527 Supplemental Materials

528 Tables

529 **S1 Table. The diagnostic sensitivity and specificity of the pooled ECL immunoassays antibody pairs.**

530 The PR-PTBW and PR-EPTBW groups compared to the MRS, Xpert, MGIT and the CRS were used for the
 531 diagnosis of active TB. Abbreviations: N, number; TP, true positive; TN, true negative; FN, false negative;
 532 FP, false positive; CI, confidence interval; PPV, positive predictive value; NPV, negative predictive value;
 533 PLR, positive likelihood ratio; NLR, negative likelihood ratio S/A, S4-20/A194-01; F/A, FIND28/A194-01;
 534 PR-PTBW, presumed pulmonary tuberculosis from ward; MGIT, mycobacterial growth indicator tube;
 535 MRS, microbiological reference standard; CRS, clinical reference standard; PR-EPTBW, presumed extra
 536 pulmonary tuberculosis from ward; N/A, not applicable.

Reference Standard	n	Positive by reference standard		Negative by reference standard		PPV (95% CI)	NPV (95% CI)	PLR (95% CI)	NLR (95% CI)
		TP/TP+FN	Sensitivity (95% CI)	TN/TN+FP	Specificity (95% CI)				
PR-PTBW									
MRS	692	184/335	0.55 (0.49, 0.60)	277/357	0.78 (0.73, 0.82)	0.70 (0.64, 0.75)	0.65 (0.60, 0.69)	2.45 (1.97, 3.04)	0.58 (0.51, 0.66)
Xpert Ultra	692	169/300	0.56 (0.51, 0.62)	297/392	0.76 (0.71, 0.80)	0.64 (0.58, 0.70)	0.69 (0.65, 0.74)	2.32 (1.90, 2.84)	0.58 (0.50, 0.66)
MGIT [§]	655	159/280	0.57 (0.51, 0.63)	283/375	0.75 (0.71, 0.80)	0.63 (0.57, 0.69)	0.70 (0.65, 0.74)	2.31 (1.89, 2.84)	0.57 (0.49, 0.66)
CRS	692	203/414	0.49 (0.44, 0.54)	217/278	0.78 (0.73, 0.83)	0.77 (0.71, 0.82)	0.51 (0.46, 0.56)	2.23 (1.75, 2.85)	0.65 (0.58, 0.73)
PR-EPTBW									
MRS	53	3/6	0.50 (0.12, 0.88)	29/47	0.62 (0.46, 0.75)	0.14 (0.03, 0.36)	0.91 (0.75, 0.98)	1.31 (0.54, 3.14)	0.81 (0.35, 1.86)
Xpert Ultra*	22	N/A	N/A	N/A	N/A	N/A	N/A	N/A	N/A
MGIT	53	2/3	0.67 (0.09, 0.99)	31/50	0.62 (0.47, 0.75)	0.10 (0.01, 0.30)	0.97 (0.84, 1.00)	1.75 (0.73, 4.21)	0.54 (0.11, 2.70)
CRS	53	16/33	0.48 (0.31, 0.66)	15/20	0.75 (0.51, 0.91)	0.76 (0.53, 0.92)	0.47 (0.29, 0.65)	1.94 (0.84, 4.48)	0.69 (0.45, 1.04)

537 [§]Participants with inadequate specimen, NTM, or not ordered set to missing for culture only reference standard.

538 [£]1 participant excluded due to invalid result using visual assessment criteria.

539 * 22 participants had a non-sputum sample taken for Xpert Ultra testing; participants with a sputum sample taken were
 540 excluded from analysis. The 22 shown due to having a non-sputum sample for Xpert Ultra testing are likely not a random
 541 sample of the total 53 participants in the table, and diagnostic performance estimates should be interpreted with caution.

542

543 **S2 Table. Plate lower limits of detection (LLOD) of PR-PTBW participants.** The LLODs from the
 544 immunoassay plates used for uLAM quantitation using the S4-20/A194-01 immunoassay stratified by
 545 MRS status from the PR-PTBW group (n=692). Abbreviations: N, number; MRS, microbiological reference
 546 standard; N/A, not applicable.

LLOD (pg/mL)	n (%)	uLAM Detected (n=139)		uLAM Not Detected (n=553)	
		Mean (min, max)	n	Mean (min, max)	n
10	16	129.5 (22, 346)	4	0.1 (0,1)	12
11	111	162.0 (12, 2160)	27	1.1 (0, 8)	84
12	39	902.8 (17, 7039)	10	1.1 (0, 10)	29
13	79	224.0 (31, 599)	8	1.5 (0, 8)	71
15	57	216.9 (15, 1691)	13	1.2 (0, 10)	44
16	34	197.2 (17, 2138)	15	3.3 (0, 12)	19
17	39	1582.7 (21, 9244)	6	1.6 (0, 11)	33
18	117	404.0 (18, 6017)	24	2.1 (0, 16)	93
19	37	12443.3 (41, 36994)	3	2.4 (0, 14)	34
21	75	82.2 (21, 299)	16	1.8 (0, 16)	59
22	8	32.0 (32, 32)	1	1.9 (0, 11)	7
23	38	653.5 (71, 1236)	2	2.5 (0, 14)	36
26	39	369.6 (27, 1235)	7	3.3 (0, 18)	32
52	1	69.0 (69, 69)	1	NA	0
63	2	94.5 (68, 121)	2	NA	0

547
 548
 549
 550
 551
 552
 553
 554
 555
 556
 557
 558

559 **S3 Table. Plate lower limits of detection (LLOD) of PR-EPTBW participants.** The LLOD from the
 560 immunoassay plates used for uLAM quantitation using the S4-20/A194-01 immunoassay stratified by
 561 MRS status from the PR-EPTBW group (N=53). Abbreviations: N, number; MRS, microbiological
 562 reference standard; N/A, not applicable.

563

LLOD (pg/mL)	n (%)	LAM Detected (n=8)				LAM Not Detected (n=45)			
		MRS Positive (n=2)		MRS Negative (n=6)		MRS Positive (n=2)		MRS Negative (n=6)	
		Mean (min, max)	n	Mean (min, max)	n	Mean (min, max)	n	Mean (min, max)	n
10	4 (7.5)	-	0	-	0	-	0	0.5 (0, 2)	4
13	1 (1.9)	-	0	-	0	10.0 (10, 10)	1	-	0
16	4 (7.5)	51.0 (51, 51)	1	24.0 (18, 34)	3	-	0	-	0
22	26 (49.1)	50.0 (50, 50)	1	-	0	4.0 (4, 4)	1	1.9 (0, 15)	24
27	18 (34)	-	0	38.3 (32, 45)	3	7.5 (0, 15)	2	5.5 (0, 21)	13

564

565

566

567 **S1 Fig. Urine Log LAM concentration by the ECL immunoassay using antibody pairs S/A and F/A**
 568 **(N=745).** A comparison of the distribution of estimated uLAM concentrations for the same participants
 569 using S/A and F/A the two antibody pairs.

570

571 **S1 Doc. Participant inclusion and exclusion criteria.**

572

573 **S2 Doc. Study Procedures**

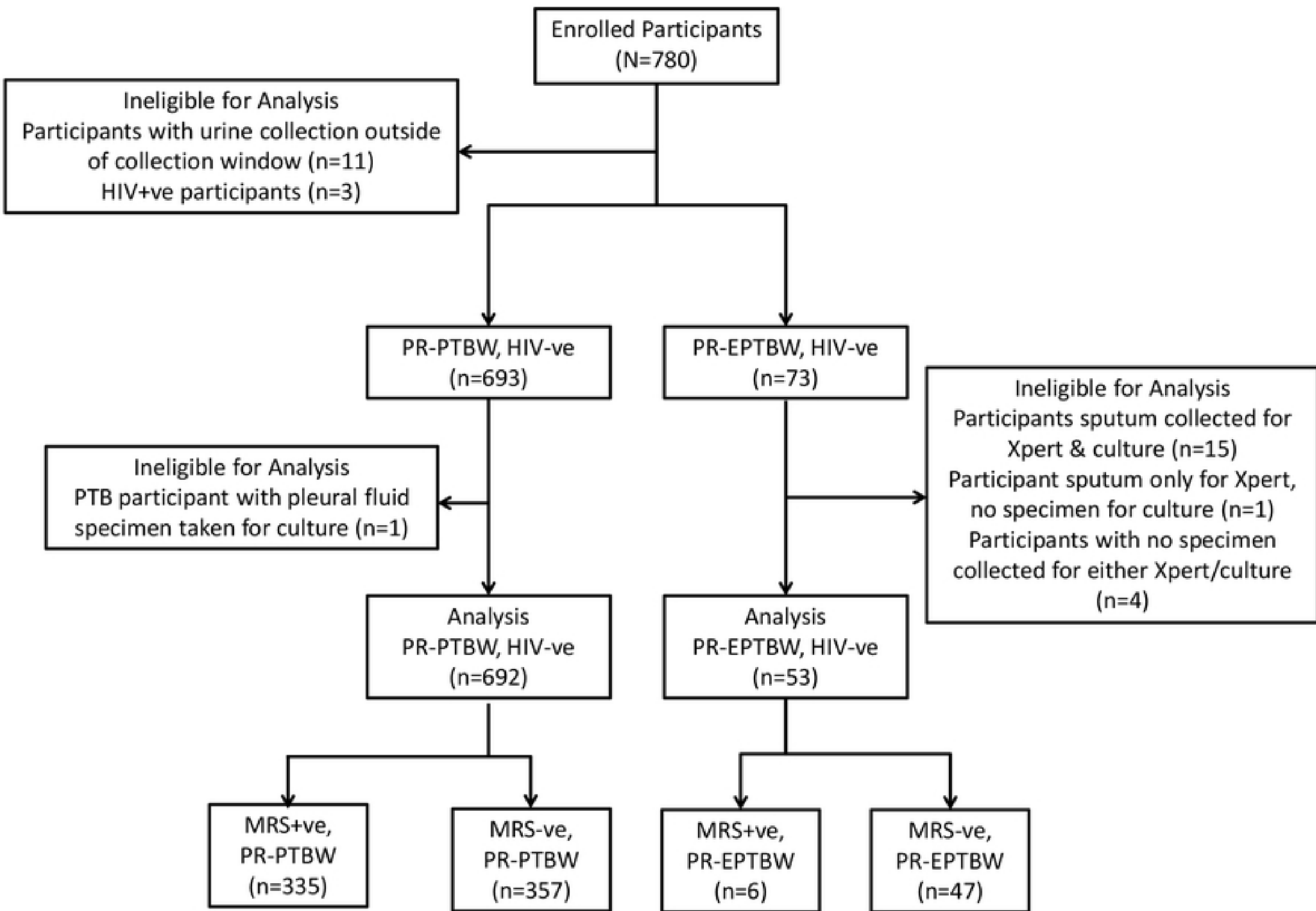


Figure 1

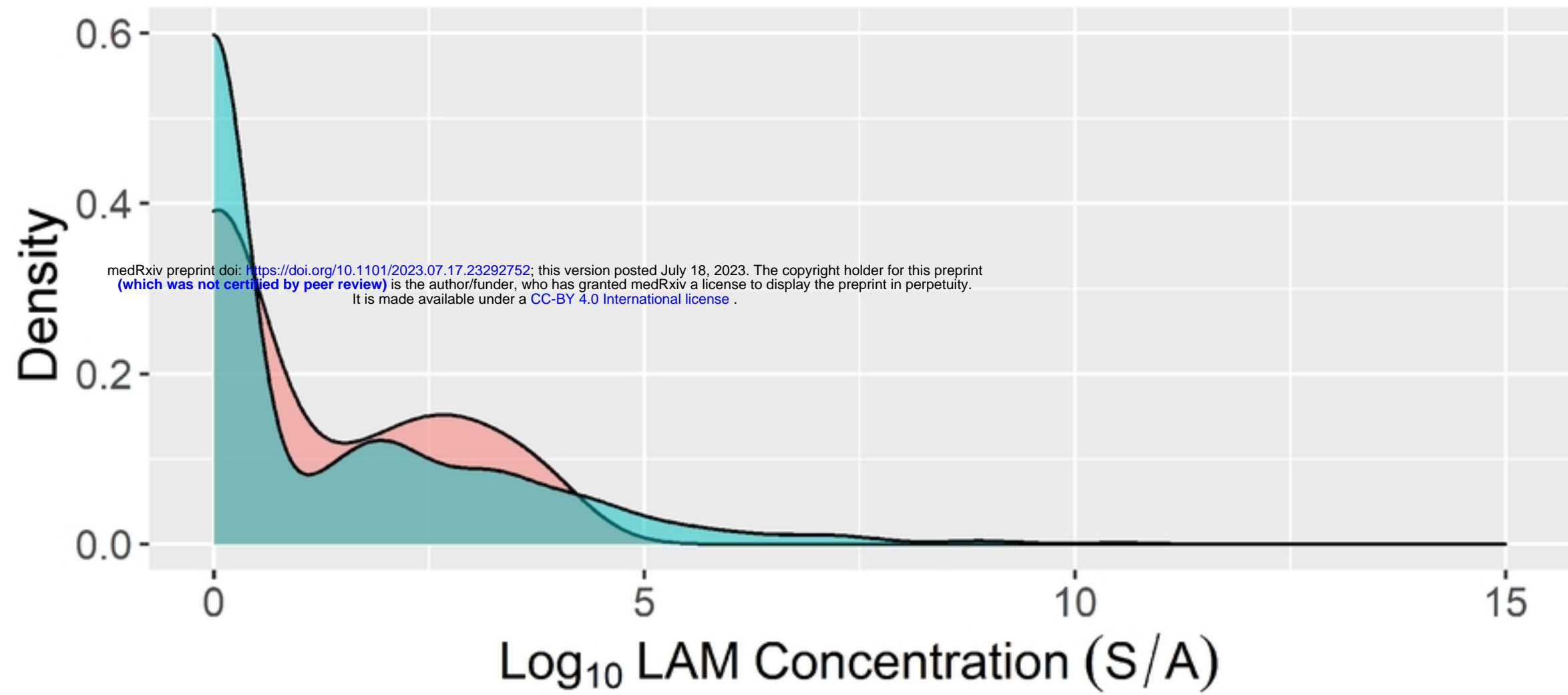
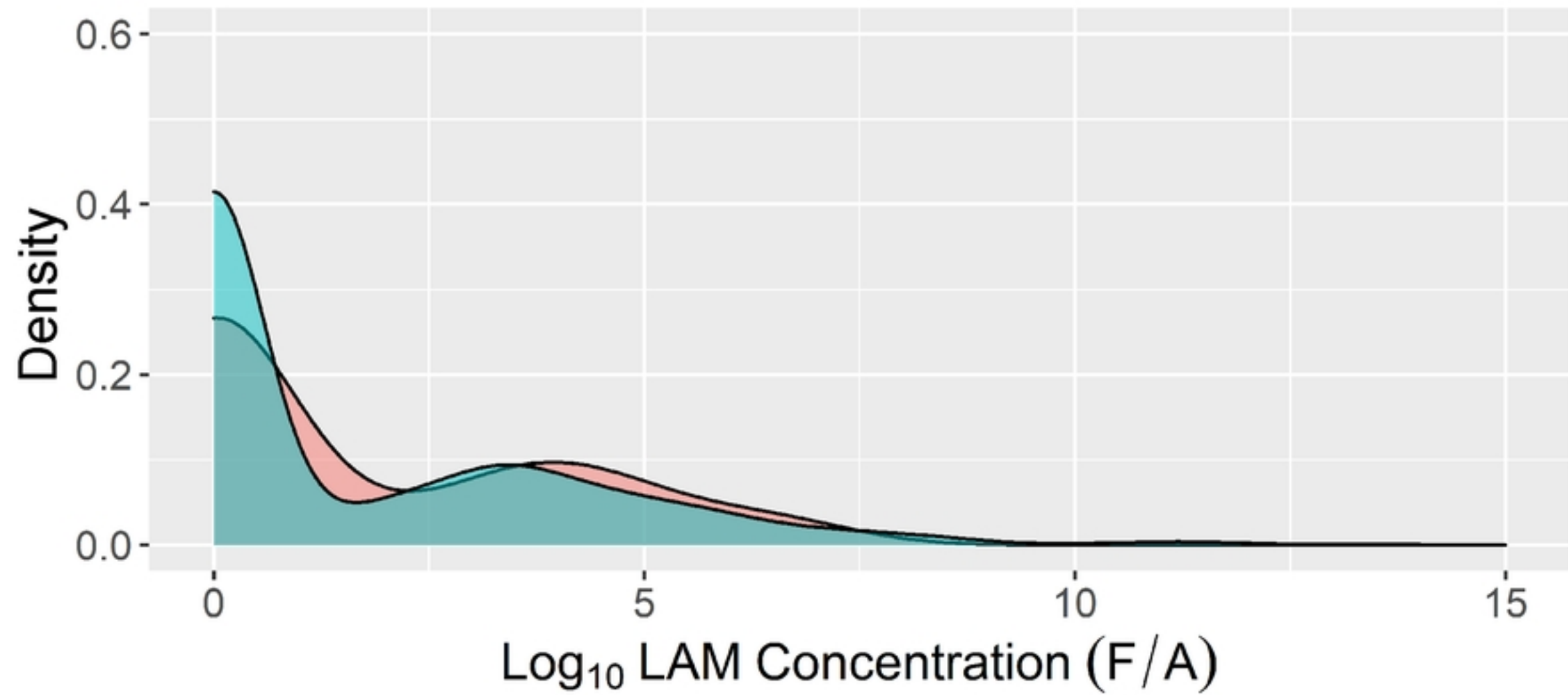
A**B**

Figure 2

medRxiv preprint doi: <https://doi.org/10.1101/2023.07.17.23292752>; this version posted July 18, 2023. The copyright holder for this preprint (which was not certified by peer review) is the author/funder, who has granted medRxiv a license to display the preprint in perpetuity. It is made available under a [CC-BY 4.0 International license](#).

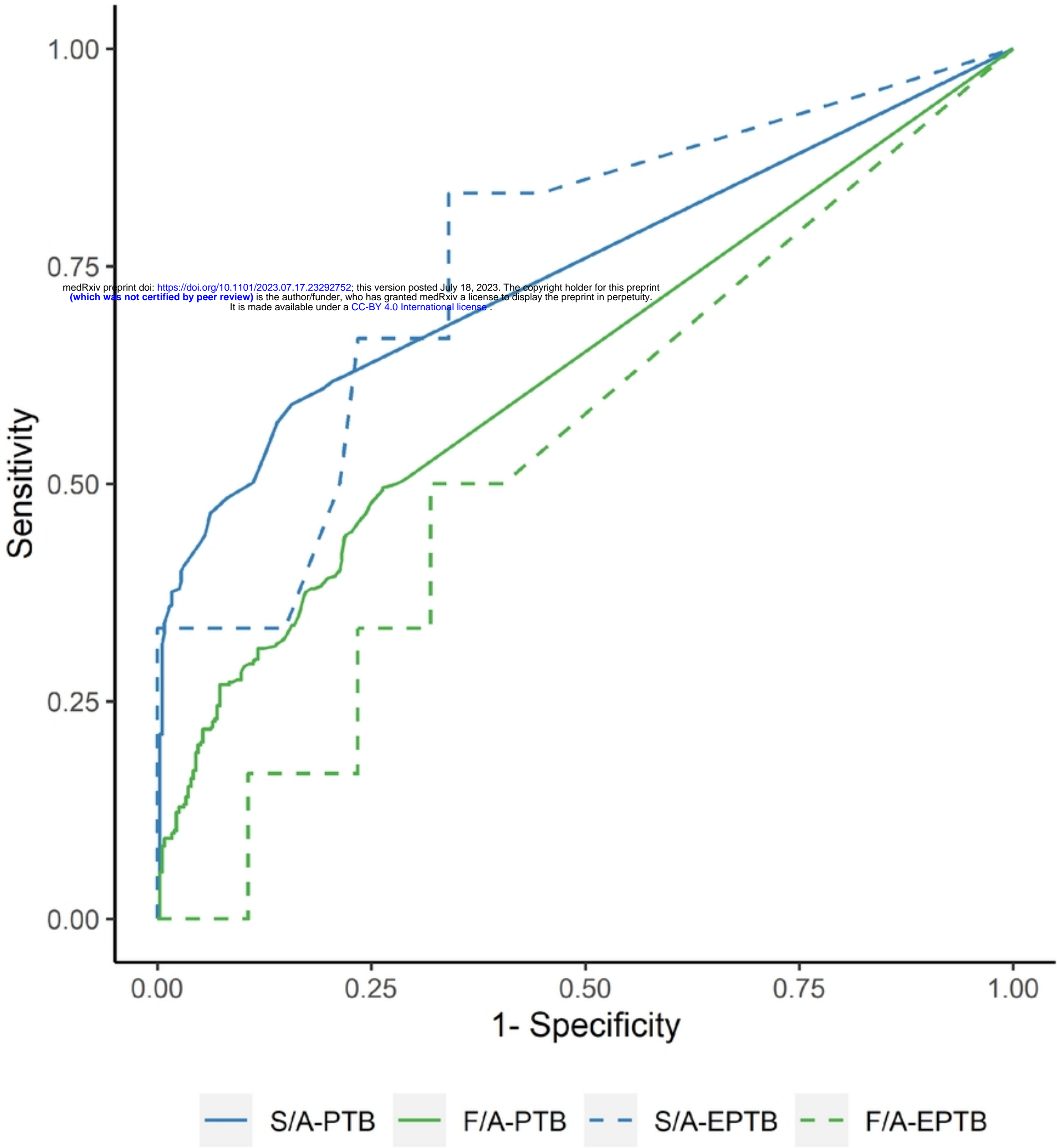


Figure 3