

1 **Strengthening Community Roots: Anchoring Newcomers in Wellness and Sustainability**
2 **(SCORE!): A protocol for the co-design and evaluation of a healthy active living program**
3 **among a newcomer community in Canada**

4
5
6 Gita Wahi^{1,2}, Sujane Kandasamy^{2,3}, Shrikant Bangdiwala^{4,5}, Andrea Baumann^{6,7}, Mary Crea-
7 Arsenio⁷, Dipika Desai^{2,4}, Kathy Georgiades⁸, Fatimah Jackson-Best⁵, Matthew Kwan³, Patricia
8 Montague², Bruce Newbold⁹, Diana Sherifali⁶, Amanda Sim⁸, Russell J. de Souza^{2,5}, Sonia S.
9 Anand^{2,4,10*}, on behalf of the SCORE! Research team[^]

10
11 ¹Department of Pediatrics, McMaster University, Hamilton, Ontario, Canada

12 ²Chanchlani Research Centre, McMaster University, Hamilton, Ontario, Canada

13 ³Child and Youth Studies, Brock University, St Catherines, Ontario, Canada

14 ⁴Population Health Research Institute, Hamilton, Ontario, Canada

15 ⁵Department of Health Research Methods, Evidence, and Impact, McMaster University,
16 Hamilton, Ontario, Canada

17 ⁶School of Nursing, McMaster University, Hamilton, Ontario, Canada

18 ⁷Global Health Office, McMaster University, Hamilton, Ontario, Canada

19 ⁸Department of Psychiatry & Behavioural Neurosciences, McMaster University, Hamilton,
20 Ontario, Canada

21 ⁹School of Earth, Environment & Society, McMaster University, Hamilton, Ontario, Canada

22 ¹⁰Department of Medicine, McMaster University, Hamilton, Ontario, Canada

23
24
25 *** Corresponding author**

26 Email: anands@mcmaster.ca (SSA)

27
28 [^]Membership of the SCORE! Research team is provided in the Acknowledgements

29 **ABSTRACT**

30 **BACKGROUND:** The burden of childhood obesity and cardiometabolic risk factors affecting
31 newcomer Canadians living in lower socioeconomic circumstances is a concerning public health
32 issue. This paper describes *Strengthening Community Roots: Anchoring Newcomers in Wellness
33 and Sustainability (SCORE!)*, an academic-community research partnership to co-design
34 interventions that nurture and optimize healthy activity living (HAL) among a community of
35 children and families new to Canada in Hamilton, Ontario, Canada.

36
37 **METHODS/DESIGN:** Our overarching program is informed by a socio-ecological model, and
38 will co-create HAL interventions for children and families new to Canada rooted in outdoor,
39 nature-based physical activity. We will proceed in three phases: Phase 1) synthesis of existing
40 evidence regarding nature based HAL interventions among children and families; Phase 2)
41 program development through four data collection activities including: i) community engagement
42 activities to build trustful relationships and understand barriers and facilitators, including
43 establishing a community advisory and action board, qualitative studies including a photovoice
44 study, and co-design workshops to develop programs; ii) characterizing the demographics of the
45 community through a household survey; iii) characterizing the built environment and HAL
46 programs/services available in the community by developing an accessible real-time systems map;
47 and iv) reviewing municipal policies relevant to HAL and sustainability; leading to Phase 3)
48 implementation and evaluation of the feasibility of co-designed HAL programs.

49
50 **CONCLUSION:** The etiology of childhood obesity and related chronic diseases is complex and
51 multifactorial, as are intervention strategies. The SCORE! program of research brings together

52 partners including community members, service providers, academic researchers, and
53 organizational leaders to build a multi-component intervention that promotes the health and
54 wellness of newcomer children and families.

55

56

57 **Abstract word count: 264**

58

59

60

61

62

63

64

65

66

67

68

69

70

71

72

73

74

75

76 **INTRODUCTION**

77 Obesity, diabetes and cardiovascular disease (CVD), known as non-communicable diseases
78 (NCDs), collectively account for more than half of the global burden of disease among adults.¹
79 Unfortunately with the growing burden of childhood obesity, cardio-metabolic complications are
80 increasing among children and reducing life expectancy.² In Canada, 32% of children aged 5-11
81 years are overweight or obese.³ In high-income countries, the burden of childhood obesity
82 disproportionately affects those of lower socioeconomic status.⁴ Furthermore, racialized children
83 in high income countries have more obesity and related cardiometabolic complications, including
84 type 2 diabetes, compared to non-racialized children and youth.^{5,6}

85
86 The burden of childhood obesity and cardiometabolic risk factors affecting Canadians who have
87 immigrated and are living in lower socioeconomic circumstances is an emerging issue.⁷ The
88 growth in Canada's population is led by immigration, where three-quarters of the 1% increase in
89 population each year is accounted for by newcomers to Canada.⁸ From the 2021 Canadian census,
90 31.5% of children, had at least one parent born outside of Canada.⁹ Children from immigrant
91 families are at higher risk for living in lower socioeconomic circumstances,¹⁰ which impacts their
92 risk for obesity and its associated health consequences.^{4,11} The associated challenges influenced
93 by their socioeconomic position include language and employment barriers¹², reduced recreational
94 opportunities¹³, and housing opportunities¹⁴ which usually leads to fewer scheduled and
95 unscheduled opportunities for physical activity¹⁵ and greater consumption of energy-dense, ultra-
96 processed foods.^{14,16}

97

98 Healthy active living (HAL) refers to physical, mental and spiritual practices that promote health
99 and wellbeing.¹⁷ Connections to nature through accessing parks, gardens, and playgrounds provide
100 children and families with opportunities for HAL practices such as physical activity and social
101 connectedness.¹⁸ Exposure to outdoor greenspace and nature-based activities, like community
102 gardening¹⁹, is associated with higher levels of mental well-being and physical health.^{20,21} Given
103 the circumstances in which newcomer children in low-income settings may live, including reduced
104 opportunities for physical activity due to urban living environments, we posit that early exposures
105 and opportunities to outdoor greenspace and nature-based activities may improve newcomer
106 children and families' mental and physical health. Further, we aim to amplify the voices of those
107 with lived experiences, and work in partnership with newcomer communities to co-create optimal
108 HAL solutions.

109
110 This paper describes the academic-community research partnership: *Strengthening Community*
111 *Roots: Anchoring Newcomers in Wellness and Sustainability* ([SCORE!](#)) to co-design interventions
112 that seek to nurture and optimize healthy activity living to prevent obesity and related cardio-
113 metabolic risk factors among a community of newcomer children and families in Hamilton,
114 Ontario, Canada.

115
116 **METHODS/DESIGN**

117 **Characteristics of population:** The initial community of focus for SCORE! is the Riverdale
118 neighbourhood of Hamilton, Ontario. The characteristics of the families in this community can be
119 described as half of the residents (50%) identifying as a visible minority, intersecting with a quarter
120 (25%) families immigrating to Canada in the last 20 years, a quarter (26%) identify as low income,

121 as defined by Statistics Canada low-income measures.^{22,23} The neighbourhood includes
122 communities of South Asian, Southeast Asian, and Middle Eastern heritage with the most common
123 linguistic preferences being Punjabi and Arabic.²³

124

125 **Setting/Location:** Community spaces in Riverdale include local public schools, playgrounds, and
126 a city run recreation centre attached to the local elementary school. The primary residential
127 dwellings are high-rise apartment buildings with limited access to safe greenspace for local
128 families use. (Figure 1)

129 **Fig 1: Map of Riverdale neighbourhood of Hamilton, ON, Canada**

130

131 **Theoretical framework and study objectives:** The etiology of obesity is complex and
132 multifactorial, as are prevention strategies.²⁴ Previous approaches to prevent childhood obesity
133 that exclusively took an individual-level approach and emphasized the sum of the individual
134 balance of energy consumption (i.e., diet) and energy expenditure (i.e., physical activity), failed to
135 acknowledge the intricate interplay of biology, psychology, socioeconomics and the built
136 environment.²⁵ A socio-ecological model allows for a broad approach to understanding the factors
137 that contribute to childhood obesity and the interplay between various key components including
138 the individual, relationships with family and peers, community factors and socio-cultural
139 environments, built environment, and society.²⁶⁻²⁸

140

141 Using the socio-ecological framework to understand factors contributing to overweight and
142 obesity, the overarching program goals of SCORE! are to co-create components of a HAL
143 intervention for children and their families in three phases (Figure 2): Phase 1) synthesis of existing
144 evidence regarding nature-based HAL interventions among immigrant children and families;

145 Phase 2) program development through data collection activities at each level of the framework
146 including: i.) community engagement activities to build trustful relationships and understand
147 barriers/ facilitators to HAL including establishing a community advisory and action board, and
148 qualitative studies including a photovoice study and co-design workshops; ii.) understanding the
149 composition of the community and their access to health services and opinions about their
150 community through a household survey; iii.) characterizing the built environment and HAL
151 services available in the community by building a real-time, accessible systems map; and iv.)
152 policy briefs will be prepared and shared with the key stakeholders involved in the policy-making
153 processes with a policy round table; leading to Phase 3) the implementation and evaluation of co-
154 designed HAL interventions to inform future SCORE! interventions.

155 **Fig 2: Socio-ecological framework adapted for SCORE! program development activities**

156 **Study activities:**

157 *Phase 1. Evidence Syntheses* are being conducted to include scoping and systematic reviews of
158 topics that encompass immigrant children and families, nature-based programs, outdoor healthy
159 activity living interventions, and chronic disease prevention and management.

160

161 ***Phase 2. Program Development***

162 ***a. Community Engagement***

163 Strong partnerships and meaningful engagement with the community residents, organizations,
164 schools, and existing community groups within the community are crucial components for the
165 design and evaluation of interventions to improve healthy active living among children and
166 families. A community advisory and action board (CAB) has been established, with key members
167 including local families, community leaders, and local service organizations to provide community

168 oversight and input into all aspects of the project. Furthermore, understanding facilitators of and
169 barriers to HAL programs from the perspectives of community members is central to formative
170 work. Three activities will be inaugural efforts to better characterize these perspectives:

171 i) Photovoice qualitative study aims to engage local families of diverse ancestry with a focus on
172 the three largest groups: South Asian, Southeast Asian, Middle Eastern communities and
173 organizations that work closely with children, youth, and families in the Riverdale area to develop
174 an understanding of community perspectives and experiences of local greenspace and nature
175 access. Photovoice is a qualitative method used in community-based participatory research to
176 document and reflect personal experiences.²⁹ The process is empowering, flexible, and embedded
177 in grassroots social action to enhance community engagement.³⁰

178 ii) Gallery walk activity is an inquiry-based approach that allows participants to freely express
179 their opinions and perspectives on a series of questions in a group or classroom format. Here
180 children are engaged in school classrooms (kindergarten to grade 8) to describe physical and
181 outdoor activities and programs they enjoy participating in, and to indicate which types of new
182 activities they would like to explore and experience within their community, and the barriers and
183 facilitators children identify as affecting their participation in activities and programs.

184 iii) Co-Design workshops will engage a broad sample of representation to co-design HAL
185 interventions using experience-based co-design (EBCD) because of its suitability for multiphase
186 projects and in designing interventions.³¹ Key study partners will be community
187 members, community partners including individuals who work with an organization in the
188 community, and organizational leaders. To include representation from the community and service
189 users, speaking English is not a requirement to participate in the workshops as interpreters are used
190 as needed. The projected output will include an understanding of key barriers and facilitators to

191 HAL and prototypes of interventions that will address the facilitators and barriers to HAL. The co-
192 designed prototypes will be adapted to local context and resources by the research team and
193 community partners and evaluated in Phase 3.

194

195 *b. The SCORE! Household Survey* will characterize the composition of the community through a
196 cross-sectional survey. This information at the household level is not available from the Statistics
197 Canada National Census, national surveys, or administrative health data. All households in the
198 Riverdale geographic boundaries will be eligible and only one adult member of each household
199 will complete the survey on behalf of the household. Key data collected will include household
200 member composition including the number, sex/gender, and ages of adults and children living in
201 the household along with factors from the household including health literacy, access to health
202 services, and household perception of: 1) social cohesion, 2) social capital, 3) community pride,
203 and 4) city-neighbourhood relationships. The sampling approach strives to ensure the same number
204 of households within each census unit of the dissemination area (the Riverdale geographic
205 boundary) to generate a sample representative of the community including that of immigration
206 status, race/ethnicity, languages spoken, and income status.³² We anticipate that some residents of
207 Riverdale will have lower English proficiency. To help increase recruitment, surveys are translated
208 into multiple languages commonly spoken in the community including Arabic, Urdu, Farsi, and
209 Punjabi. SCORE! multi-lingual team members will canvas door-to-door in the apartment buildings
210 to speak directly with residents and translate/interpret recruitment materials.

211

212 *c. Systems Map* will characterize the built environment and HAL programs and services by
213 documenting key formal and informal spaces in the city that offer programs and activities for

214 children and families. To amplify the impact and utility of the systems map for the Riverdale
215 residents, semi-structured interviews with community leaders will be conducted to assist in
216 identifying spaces, services, resources, and programs within, or near, and available to the Riverdale
217 community. These interviews will inform the development of the systems map by identifying and
218 describing relevant services and resources, which will populate a map using an online GIS
219 system. The SCORE! systems map will have the capability of being automatically updated as
220 new source data are updated and changes. The systems map is being translated into the three most
221 common languages in the Riverdale community.

222

223 *d. Policy Round Table:* Policy briefs will be prepared and shared with the key stakeholders
224 involved in the policy-making processes that influence the primary community of interests
225 opportunities for HAL. This will include Hamilton Public Health, City of Hamilton, Hamilton
226 Wentworth District School Board, and Hamilton Catholic School Board, advocacy organizations,
227 and other key actors. Policy round table discussions will be the starting point and lead to
228 development of the framework for the assessment of HAL-related policy and implementation, as
229 well as the extent to which policy outcomes align with the priorities of different stakeholder
230 groups.

231

232 ***Phase 3. Implementation and evaluation of the feasibility of co-designed HAL interventions***
233 will be guided by the RE-AIM framework for public health intervention evaluation.³³ This
234 framework includes measurement of the reach, effectiveness, adoption, implementation, and
235 maintenance of the interventions.³³ This will be a pre-post study design to pilot and evaluate
236 activities that have been co-designed within the SCORE! program platform. Key feasibility

237 objectives for this piloting exercise will include: 1) Recruitment (e.g., how many families
238 expressed interest and consent) to the activity; 2) Uptake of the intervention (e.g., how many
239 people who consent attend the activities); 3) Among those who attend the events, the percent that
240 complete baseline and follow-up questionnaires to measure nutrition, physical activity, physical
241 literacy, and sleep (of both child and parents) at baseline and follow-up questionnaires. 4) Evaluate
242 the acceptability, barriers and facilitators to participating in the HAL interventions.

243

244 **Knowledge Exchange:** Knowledge exchange will occur using a multi-pronged and integrated
245 knowledge translation strategy that builds on existing community partnerships and integrates new
246 networks that we will cultivated through this project knowledge exchange will occur. We first plan
247 to co-synthesize key learnings with the leadership of the advisory councils and committees. This
248 will be presented to all partner organizations via regular knowledge exchange meetings. During
249 these sessions, we will review progress, corroborate learnings, explore divergences, and discuss
250 the next steps. At the end of the project activities, we will bring all parties together for a meeting
251 where we will review key lessons learned and develop a road map for implementation. Second,
252 existing communication channels and social media avenues will be leveraged to disseminate key
253 messages, learnings, and results throughout the project. The McMaster Okanagan Committee,
254 which is charged with sustainability initiatives for the university campus and the surrounding city
255 will manage our social media posting and website (<https://okanagan.mcmaster.ca>). This will
256 harness and amplify the voices of the participants (i.e., priority populations) by having those
257 interested lead the e-journal pieces, select meeting topics, and represent their communities of
258 interest on our governance committees. These activities will encourage active involvement of

259 residents through sharing their stories, directing their narratives, and building capacity for
 260 leadership. Figure 3 illustrates SCORE!’s governance structure.

261 **Fig 3: Governance model of SCORE!**

262

263 **Instruments and Data tools:** We will use validated data collection instruments and questionnaires
 264 in the Household survey (including questions on health literacy, access to health services, and
 265 household perception of social cohesion, social capital, pride living in their community, and city-
 266 neighbourhood relationships) (Table 1a) and for evaluating the interventions (nutrition, physical
 267 activity, physical literacy, mental health and well-being, and sleep). (Table 1b)

268 **Table 1a: Data instruments for the household survey**

Domain	Questions
Household	1. What kind of housing do you live in? 2. Do you rent or own your home? 3. How many people live in your household? Please include yourself in this count. a. How many of these are under the age of 18 years? 4. What is your best estimate of the total income of ALL household members from ALL sources in the past 12 months (before taxes)?
Demographics - Self	1. Age 2. Gender 3. Which ethnicity do you identify with? Check all that apply 4. What is your religion? 5. What language do you use most often at home? If you live alone, then please specify which language you are most comfortable with. If you use multiple languages at home equally often, then please select all languages that you use the most. 6. What is the highest level of education you have completed? 7. Please specify your marital status 8. Please specify your employment status 9. Were you born in Canada? a. If no... i. In which country were you born? ii. What category of immigrant are you? iii. How long have you lived in Canada? iv. How long have you lived in Riverdale?
Health Care Access - Self	1. Do you have a primary health care provider? (e.g. family doctor) 2. Do you have a dentist? 3. Do you have health insurance beyond OHIP? 4. Do you usually get a flu shot? 5. How many COVID-19 vaccines have you received?

Health Literacy	<ol style="list-style-type: none"> 1. How often do you have someone help you read hospital materials? 2. How confident are you filling out medical forms by yourself? 3. How often do you have problems learning about your medical condition because of difficulty understanding written information? 4. How often do you have a problem understanding what is told to you about your medical condition?
Neighbourhood Satisfaction	<ol style="list-style-type: none"> 1. I am satisfied with my neighbourhood as a whole 2. Living in this neighbourhood gives me a sense of pride 3. People in my neighbourhood can be trusted 4. People in my neighbourhood share the same values 5. My neighbourhood continually looks for solutions to problems rather than being satisfied with the way things are 6. I have influence over what my neighbourhood is like 7. Residents are invited to be involved in decision-making in my neighbourhood 8. The City is responsive to residents' inquiries, input, and/or requests
Demographics – Other household members	<ol style="list-style-type: none"> 1. How are they related to you? 2. Age 3. Gender 4. Which ethnicity do they identify with? Check all that apply 5. What is their religion? 6. What language do they use most often at home? If they use multiple languages equally often, then please select all languages that they use the most. 7. If age ≥ 18: <ol style="list-style-type: none"> a. What is the highest level of education they have completed? b. Are they employed? 8. If $5 \leq \text{age} \leq 18$: <ol style="list-style-type: none"> a. What school do they go to? 9. Were they born in Canada? <ol style="list-style-type: none"> a. If no: <ol style="list-style-type: none"> i. In which country were they born? ii. What category of immigrant are they? iii. How long have they lived in Canada? iv. How long have they lived in Riverdale?
Health Care Access – Other household members	<ol style="list-style-type: none"> 1. Do they have a primary health care provider? (e.g. family doctor) 2. Do they have a dentist? 3. Do they have health insurance beyond OHIP? 4. Do they usually get a flu shot? 5. How many COVID-19 vaccines have they received?

269
270
271

Table 1b: Data instruments for the pilot intervention implementation and evaluation

Domain	Questions
Household	<ol style="list-style-type: none"> 1. What kind of housing do you live in? 2. Do you rent or own your home? 3. How many people live in your household? <ol style="list-style-type: none"> a. How many of these are under the age of 18 years? 4. What is your best estimate of the total income of ALL household members from ALL sources in the past 12 months (before taxes)?
Demographics	<ol style="list-style-type: none"> 5. How old are you? 6. What is your gender? 7. Which ethnicity do you identify with? Check all that apply 8. What is your religion? 9. What language do you use most often at home? 10. Adults only: <ol style="list-style-type: none"> a. What is the highest level of education you have completed? b. Please specify your marital status c. Please specify your employment status 11. Children only: <ol style="list-style-type: none"> a. What grade are you in at school? In which country were you born? 12. How many years have you lived in Canada?
Healthy Active Living - Parent	<ol style="list-style-type: none"> 1. How many people smoke in your household? 2. How often does your family eat out at a restaurant or order in food? 3. Over the past 7 days, on how many days were you physically active for a total of at least 60 minutes per day? 4. Over the last 7 days, on how many days was your child physically active for a total of at least 60 minutes per day?
Sleep	<p>Please answer the following questions about your child's sleeping patterns over the past month:</p> <ol style="list-style-type: none"> 1. What time do they usually get up in the morning? 2. What time do they usually go to bed? 3. How many hours of sleep do they usually get?
Physical Activity	<ol style="list-style-type: none"> 1. How long does your child do the following, on average? [answer separately for weekdays and weekends] <ol style="list-style-type: none"> a. Total Screen time b. Play Outside c. Organized Sports
Diet	<p>How often does your child eat each of the following in a typical week?</p> <ol style="list-style-type: none"> 1. Deep fried food/snacks/fast food 2. Salty foods/snacks 3. Chocolate 4. Desserts/sweet snacks 5. Pop/soda 6. Nuts/seeds 7. Fruits 8. Fruit juices 9. Leafy green vegetables

275 **Data management:** Participant data will be anonymized and stored in a secure electronic data
 276 platform.

277

278 **Timeline:** Study activities began in April 2022 and will continue through March 2024.

279

280 **Key Partnerships:** Non-profits organizations (e.g., Green Venture), academic (McMaster
 281 University, Mohawk College), the City of Hamilton including recreational centres and public
 282 health, along with local schools including the school administration. Table 2 illustrates key
 283 partners by sector.

284 **Table 2:** Key partners by sector

Sector	Partner	Initial role(s)
Community organization	YMCA of Hamilton, Burlington, Brantford	CAB, Community engagement
Community organization	Green Venture	CAB, Community engagement, Intervention piloting
Community organization	Immigrant Working Centre (IWC)	CAB, community engagement, Intervention pilot
Community organization	Community Action program for Children (CAP-C)	CAB, community engagement
Community organization	Today's Family	CAB, community engagement
Community organization	Environment Hamilton/Friendly Streets	Community engagement
Community organization	Trees for Hamilton	CAB
Education	Mohawk College	CAB, Community engagement
Education	McMaster University, Departments of Medicine and Pediatrics	Advisory
Education	Hamilton Wentworth Catholic District School Board	Community engagement
Education	The Starfish Canada	Advisory
Healthcare	St. Joseph's Healthcare Hamilton	Community engagement, Advisory
Healthcare	McMaster Children's Hospital/Hamilton Health Sciences	Community engagement, Advisory
Municipal	City of Hamilton - Forestry and Horticulture; Recreation; Healthy and Safe Communities; Public Health	CAB, Policy roundtable

Municipal	Hamilton Public Library	Community engagement
Research	Infant and Child Health (INCH) Lab	Advisory
Research	Juravinski Research Institute	Advisory
Research	The Canadian Urban Environmental Health Research Consortium (CANUE)	Advisory

285

286 **Ethics:** As the project involved extensive community engagement activities and co-design with
 287 community partners, indepth discussions were undertaken within the study team, with our
 288 community and funding partners, and our academic research ethics board with respect to in which
 289 settings and for which activities, a full description of research intent and informed consent was
 290 required. The activities undertaken as part of SCORE! were guided by the Tri Council Policy
 291 Statement-2: Ethical Conduct for Research Involving Humans.³⁴ For each research study activity
 292 described above separate protocols have been approved if applicable by the Hamilton Integrated
 293 Research Ethics Board. When personal information were collected community participants were
 294 asked to provide informed consent.

295

296 **DISCUSSION**

297 This protocol outlines the inaugural phases of the development of the SCORE! program of research
 298 which will co-design nature-based, outdoor physical activity HAL interventions with a community
 299 of newcomer children and families in Ontario, Canada.

300

301 Obesity is a significant public health concern with complex and multi-factorial levers and barriers.
 302 The trajectory of growth in childhood is a symptom of a larger imbalance not merely at the level
 303 of the individual or even the family, but the built environment and economy which requires
 304 population-level approaches.²⁸ The use of methods to co-create multi-level interventions has been

305 shown to improve adherence and fidelity to programming. Thoughtful, inclusive, and sustainable
306 engagement with multiple stakeholders is required for wholesome planning and intervention
307 design. We estimate that this approach will take at least 2 years in the design phase.

308

309 There are unique components to this research protocol. The focus on the primary prevention of
310 obesity and related health complications of a high-risk population, newcomer children and
311 families¹¹ comes at a time when the population growth in Canada is driven by global migration
312 patterns. Understanding the unique needs and challenges of this community is important for
313 ensuring adequate service provision now, and in the future. Further, the connection to nature and
314 outdoor time highlights the rising concerns about a climate crisis that has direct connections to
315 health. A systematic review by An *et al* describes a conceptual model that connects global
316 warming to the obesity epidemic through the impact of fossil fuels, population growth, and
317 industrialization as factors leading to changes in land use, agricultural productivity, and
318 transportation. They demonstrate how these upstream factors should be factored into contributing
319 to transitions in nutrition and physical activity to impact the obesity epidemic.³⁵ Understanding
320 local context and global levers will be important to drive meaningful health interventions.

321

322 Initial activities to launch SCORE!'s multi-level projects have tested operational processes leading
323 to challenges, as well as highlighting the importance of community partnerships. Early challenges
324 include navigating and adapting academic institutional processes for community-engaged
325 research. Other challenging processes include navigating the complex web of community
326 programs and services, which has demonstrated that public services are often siloed and not
327 designed optimally to service the most vulnerable. The voices of the community members are

328 infused through every aspect of this project. Community members in the CAB and other
329 community engagement activities have been instrumental in project decision making including as
330 examples the research agenda, choosing the most common non-English languages for translation
331 of materials, where and how to hold events, and study recruitment.

332

333 While some challenges have presented themselves in the co-design of this intervention, we have
334 developed collaborative relationship with key partners including the local schools, municipal
335 government, non-profit agencies, and our academic research ethics boards. Furthermore, the
336 creation of a Policy Round Table provides a vehicle to have multisectoral communication to enable
337 our collective effort to establish the successful implementation and sustainability of the
338 intervention we are designing.

339

340 This proposed work will be foundational to a platform of research that prioritizes a community-
341 academic partnership to build public health interventions that aim to prevent obesity and promote
342 nature-based physical activity, among a community of newcomer Canadians.

343

344

345

346

347
348
349
350
351
352
353
354
355
356
357
358
359
360
361
362
363
364
365
366
367
368
369
370
371
372
373
374
375
376
377
378
379
380
381
382
383
384
385
386
387
388
389
390
391
392

SCORE! Research Team:

Investigators: Sonia S. Anand, Shrikant Bangdiwala, Andrea Baumann, Jeffrey Brook, Mary Crea-Arsenio, Russell de Souza, Dipika Desai, Deborah Diliberto, Kathy Georgiades, Fatimah Jackson-Best, Sujane Kandasamy, Matthew Kwan, Bruce Newbold, Diana Sherifali, Amanda Sim, Gita Wahi. **Operations team:** Patty Montague (Program Manager), Natalie Campbell, Madison Fach, Abdul Naebi.

Acknowledgements

Dr. Anand is supported by a Tier 1 Canada Research Chair in Ethnicity and CVD and Heart, Stroke Foundation Chair in Population Health, grant from the Canadian Partnership Against Cancer, Heart and Stroke Foundation of Canada and Canadian Institutes of Health Research

Funders and Community Partners:

Public Health Agency of Canada (PHAC); The Canadian Urban Environmental Health Research Consortium (CANUE); City of Hamilton, Community Action Program for Children (CAPC) (c/o Ghanwa Afach); Environment Hamilton/Friendly Streets; Faculty of Health Sciences (McMaster University); Global Health Program (McMaster University); Green Venture (Guiliana, Casimirri, Sheila Gutierrez, Heather Govender); Hamilton Public Library; Hamilton Wentworth District School Board (c/o Jeff Zwolak, Lake Avenue Elementary School); Hamilton Wentworth Catholic District School Board (c/o Morris Hucal); Immigrant Working Centre (IWC) (c/o Claudio Ruiz, Wasan Mohamad, Rosemary Aswani, Ahlam Mohammed); Infant and Child Health (INCH Lab at Brock University); Juravinski Research Institute; Master of Public Health Program (McMaster University); McMaster Children’s Hospital; McMaster Evidence Review and Synthesis Team (MERST); McMaster Okanagan Committee; McMaster University Department of Pediatrics, Mohawk College (Wendy Lawson), Novartis, The Research Institute of St. Joe’s Hamilton (Lehana Thebane); The Starfish Canada; Today’s Family (c/o Brenda Ferguson, Blaze Forgie); Trees for Hamilton (Myles Sergeant); YMCA of Hamilton, Burlington & Brantford (c/o Nicki Glowacki, Lily Lumsden, Parsa Memon).

Administration: Loshana Sockalingam, Kathy Stewart.

Students/trainees: Nora Abdalla, Sandi Azab, Shania Bhopa, Ashfia Chowdhury, Fatima Dawood, Rabbi Fazle, Gurlean Gill, Junaid Habibi, Salima Hemani, Margaret Lo, Baanu Manoharan, Saathana Mathirajan, Pranshu Muppidi, Abeerah Murtaza, Adonis Ng, Natasha Ross, Sohnia Sansanwal, Jaanuni Shanjith, Afraah Shirin, Tyler Soberano, Divya Tamilselvan, Sanya Vij, Aamina Zahid.

Volunteers: Adan Amer, Albi Angjeli, Krishna Basani, Dania Buttu, Naisha Dharia, Paranshi Gupta, Araash Halani, Sarah Hassan, Senaya Karunarathne, Menhaz Munir, Lennisha Nagalingam, Melissa Pereira, Felicia Liu, Shanelle Racine, Dania Rana, Sachin Sergeant, Rosain Stennett.

393 **REFERENCES**

- 394 1. Yusuf S, Reddy S, Ôunpuu S, Anand S. Global burden of cardiovascular diseases: part I:
395 general considerations, the epidemiologic transition, risk factors, and impact of urbanization.
396 *Circulation*. 2001;104(22):2746-2753.
- 397 2. Di Cesare M, Sorić M, Bovet P, et al. The epidemiological burden of obesity in
398 childhood: a worldwide epidemic requiring urgent action. *BMC Med*. 2019/11/25
399 2019;17(1):212. doi:10.1186/s12916-019-1449-8
- 400 3. Roberts KC, Shields M, de Groh M, Aziz A, Gilbert JA. Overweight and obesity in
401 children and adolescents: results from the 2009 to 2011 Canadian Health Measures Survey.
402 *Health reports*. Sep 2012;23(3):37-41.
- 403 4. Blasingame M, Samuels LR, Heerman WJ. The Combined Effects of Social
404 Determinants of Health on Childhood Overweight and Obesity. *Childhood Obesity*.
405 2023;doi:10.1089/chi.2022.0222
- 406 5. Amed S, Dean HJ, Panagiotopoulos C, et al. Type 2 diabetes, medication-induced
407 diabetes, and monogenic diabetes in Canadian children. A prospective national surveillance
408 study. *Diabetes Care*. 2010;33(4):786-791.
- 409 6. Hudda MT, Nightingale CM, Donin AS, et al. Patterns of childhood body mass index
410 (BMI), overweight and obesity in South Asian and black participants in the English National
411 child measurement programme: effect of applying BMI adjustments standardising for ethnic
412 differences in BMI-body fatness associations. *International Journal of Obesity*. 2018;42(4):662-
413 670.
- 414 7. Lane G, Farag M, White J, Nisbet C, Vatanparast H. Chronic health disparities among
415 refugee and immigrant children in Canada. *Applied Physiology, Nutrition, and Metabolism*.
416 2018;43(10):1043-1058.
- 417 8. Government of Canada. Annual Demographic Estimates: Canada, Provinces and
418 Territories, Analysis: Total Population. Accessed August 13, 2022.
419 <https://www150.statcan.gc.ca/n1/pub/91-215-x/2021001/sec1-eng.htm>
- 420 9. Statistics Canada. Immigrants make up the largest share of the population in over 150
421 years and continue to shape who we are as Canadians. Government of Canada. Updated October
422 26, 2022. Accessed April 1, 2023. [https://www150.statcan.gc.ca/n1/daily-](https://www150.statcan.gc.ca/n1/daily-quotidien/221026/dq221026a-eng.htm)
423 [quotidien/221026/dq221026a-eng.htm](https://www150.statcan.gc.ca/n1/daily-quotidien/221026/dq221026a-eng.htm)
- 424 10. Beiser M, Hou F, Hyman I, Tousignant M. Poverty, family process, and the mental health
425 of immigrant children in Canada. *Am J Public Health*. 2002;92(2):220-227.
- 426 11. Wahi G, Boyle MH, Morrison KM, Georgiades K. Body mass index among immigrant
427 and non-immigrant youth: Evidence from the Canadian Community Health Survey. *Can J Public*
428 *Health*. 2014;105(4):e239-e244.
- 429 12. Alidu L, Grunfeld EA. A systematic review of acculturation, obesity and health
430 behaviours among migrants to high-income countries. *Psychology & Health*. 2018/06/03
431 2018;33(6):724-745. doi:10.1080/08870446.2017.1398327
- 432 13. Lane G, Nisbet C, Johnson S, Candow D, Chilibeck PD, Vatanparast H. Barriers and
433 facilitators to meeting recommended physical activity levels among new immigrant and refugee
434 children in Saskatchewan, Canada. *Applied Physiology, Nutrition, and Metabolism*.
435 2021;46(7):797-807.
- 436 14. Ghosh-Dastidar B, Cohen D, Hunter G, et al. Distance to Store, Food Prices, and Obesity
437 in Urban Food Deserts. *American Journal of Preventive Medicine*. 2014/11/01/ 2014;47(5):587-
438 595. doi:<https://doi.org/10.1016/j.amepre.2014.07.005>

- 439 15. Lacoste Y, Dancause KN, Gosselin-Gagne J, Gadais T. Physical Activity Among
 440 Immigrant Children: A Systematic Review. *Journal of Physical Activity and Health*. 01 Oct.
 441 2020;17(10):1047-1058. doi:10.1123/jpah.2019-0272
- 442 16. Henderson A, Epp-Koop S, Slater J. Exploring food and healthy eating with newcomers
 443 in Winnipeg's North End. *International Journal of Migration, Health and Social Care*.
 444 2017;13(1):1-14. doi:10.1108/IJMHS-06-2015-0022
- 445 17. Health Canada. Healthy Living. Government of Canada. Accessed April 1, 2023.
 446 <https://www.canada.ca/en/health-canada/services/healthy-living.html>
- 447 18. Flett MR, Moore RW, Pfeiffer KA, Belonga J, Navarre J. Connecting Children and
 448 Family with Nature-Based Physical Activity. *American Journal of Health Education*. Sep/Oct
 449 Sep/Oct 2010
 450 2023-02-21 2010;41(5):292-300.
- 451 19. Al-Delaimy WK, Webb M. Community Gardens as Environmental Health Interventions:
 452 Benefits Versus Potential Risks. *Current Environmental Health Reports*. 2017/06/01
 453 2017;4(2):252-265. doi:10.1007/s40572-017-0133-4
- 454 20. Tillmann S, Tobin D, Avison W, Gilliland J. Mental health benefits of interactions with
 455 nature in children and teenagers: A systematic review. *J Epidemiol Community Health*.
 456 2018;72(10):958-966.
- 457 21. Van den Berg M, Wendel-Vos W, van Poppel M, Kemper H, van Mechelen W, Maas J.
 458 Health benefits of green spaces in the living environment: A systematic review of
 459 epidemiological studies. *Urban forestry & urban greening*. 2015;14(4):806-816.
- 460 22. Census Mapper. Canada Census 2021, Low Income Explorer (People in LIM-AT).
 461 Accessed May 12, 2023. <https://censusmapper.ca/maps/3350#16/43.2321/-79.7574>
- 462 23. Statistics Canada. Census Profile, 2021 Census of Population. Government of Canada.
 463 Accessed May 12, 2023. [https://www12.statcan.gc.ca/census-recensement/2021/dp-
 pd/prof/details/page.cfm?Lang=E&SearchText=L8E%201J7&DGUIDlist=2021S05075370072.0
 3&GENDERlist=1,2,3&STATISTIClist=1,4&HEADERlist=0](https://www12.statcan.gc.ca/census-recensement/2021/dp-

 464 pd/prof/details/page.cfm?Lang=E&SearchText=L8E%201J7&DGUIDlist=2021S05075370072.0

 465 3&GENDERlist=1,2,3&STATISTIClist=1,4&HEADERlist=0)
- 466 24. World Health Organization WHO. Obesity. Accessed April 19, 2021.
 467 https://www.who.int/health-topics/obesity#tab=tab_1
- 468 25. Finegood DT. The importance of systems thinking to address obesity. *Obesity Treatment
 469 and Prevention: New Directions*. Karger Publishers; 2012:123-137.
- 470 26. Richard L, Gauvin L, Raine K. Ecological models revisited: their uses and evolution in
 471 health promotion over two decades. *Annu Rev Public Health*. 2011;32:307-326.
- 472 27. Golden SD, Earp JAL. Social ecological approaches to individuals and their contexts:
 473 twenty years of health education & behavior health promotion interventions. *Health Educ Behav*.
 474 2012;39(3):364-372.
- 475 28. Willows ND, Hanley AJ, Delormier T. A socioecological framework to understand
 476 weight-related issues in Aboriginal children in Canada. *Appl Physiol Nutr Metab*. 2012;37:1-13.
- 477 29. Wang CC. Photovoice: A participatory action research strategy applied to women's
 478 health. *Journal of women's health*. 1999;8(2):185-192.
- 479 30. Wang C, Burris MA. Empowerment through photo novella: Portraits of participation.
 480 *Health education quarterly*. 1994;21(2):171-186.
- 481 31. Fylan B, Tomlinson J, Raynor DK, Silcock J. Using experience-based co-design with
 482 patients, carers and healthcare professionals to develop theory-based interventions for safer
 483 medicines use. *Research in Social and Administrative Pharmacy*. 2021;17(12):2127-2135.

- 484 32. Sim A, Georgiades K. Neighbourhood and family correlates of immigrant children's
485 mental health: a population-based cross-sectional study in Canada. *BMC Psychiatry*. 2022/07/05
486 2022;22(1):447. doi:10.1186/s12888-022-04096-7
- 487 33. Glasgow RE, Harden SM, Gaglio B, et al. RE-AIM Planning and Evaluation Framework:
488 Adapting to New Science and Practice With a 20-Year Review. Mini Review. *Frontiers in*
489 *Public Health*. 2019-March-29 2019;7doi:10.3389/fpubh.2019.00064
- 490 34. Canadian Institutes of Health Research NSaERCoC, and Social Sciences and Humanities
491 Research Council of Canada,. TriCouncil Policy Statement: Ethical Conduct for Research
492 Involving Humans. Government of Canada; 2022. [https://ethics.gc.ca/eng/policy-](https://ethics.gc.ca/eng/policy-politique_tcps2-eptc2_2022.html)
493 [politique_tcps2-eptc2_2022.html](https://ethics.gc.ca/eng/policy-politique_tcps2-eptc2_2022.html)
- 494 35. An R, Ji M, Zhang S. Global warming and obesity: a systematic review. *Obesity Reviews*.
495 2018;19(2):150-163. doi:<https://doi.org/10.1111/obr.12624>
496

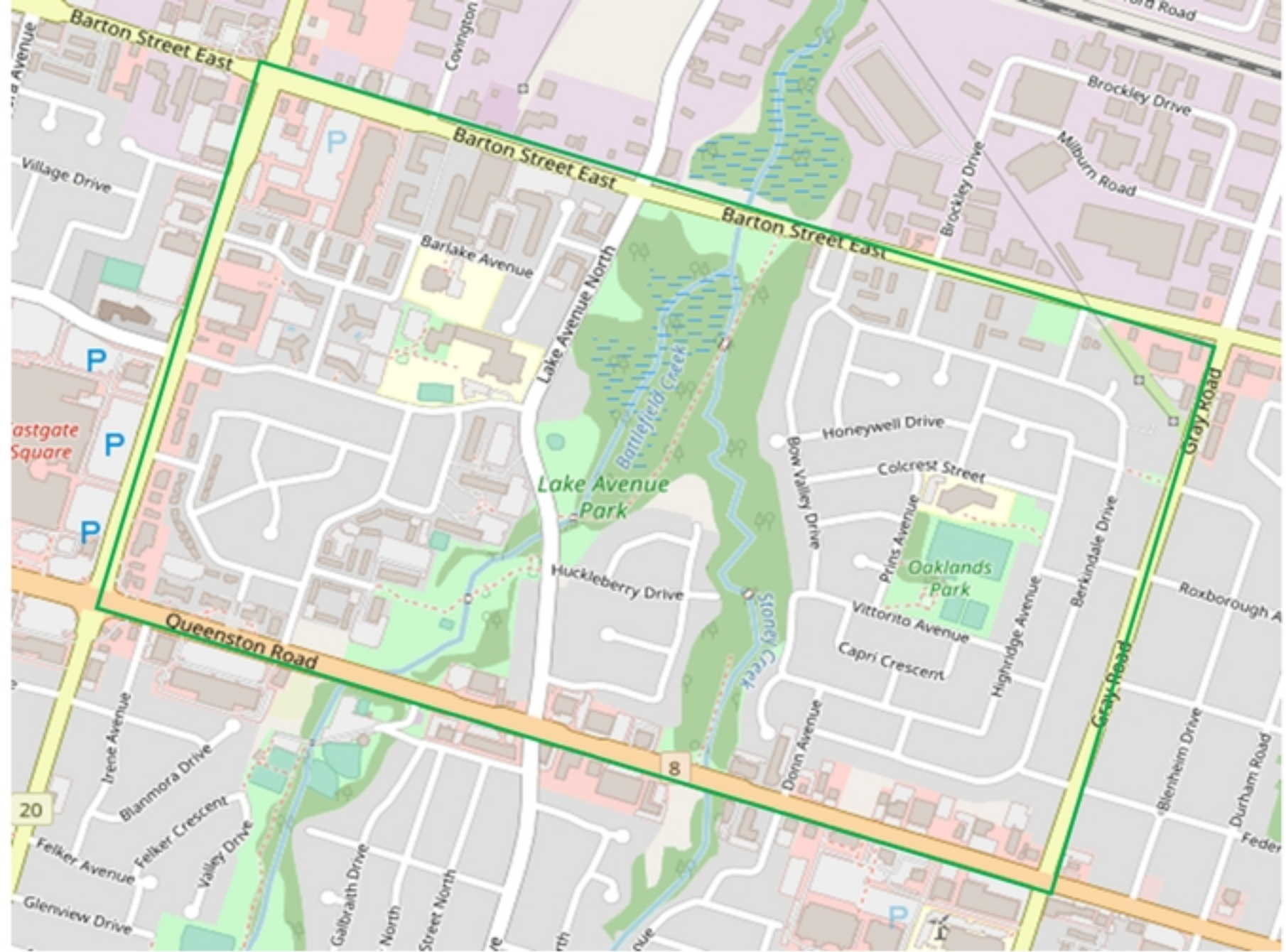


Figure 1

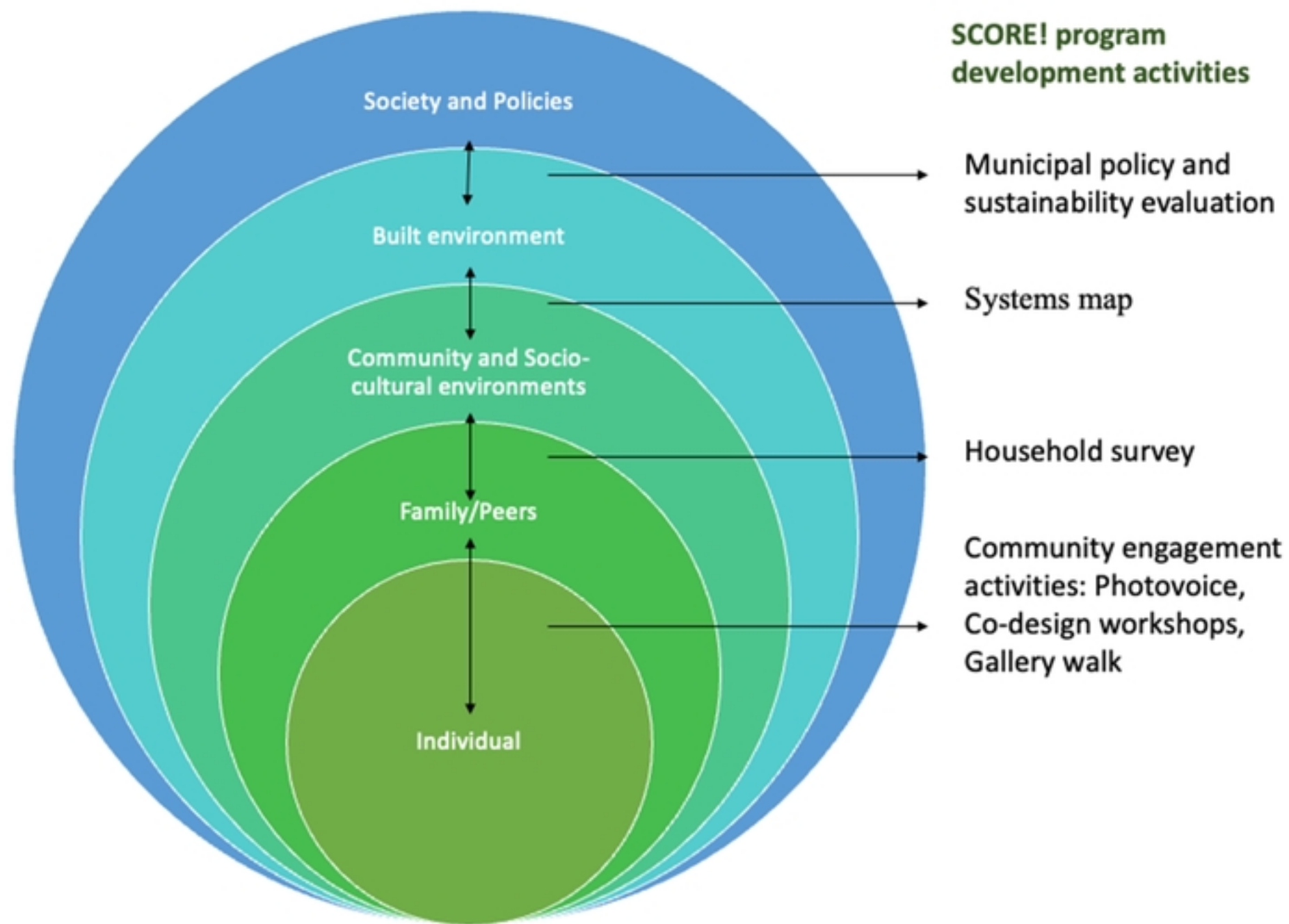


Figure 2

SCORE! GOVERNANCE STRUCTURE

STEERING COMMITTEE

(Project Vision; Membership includes PI + 1-3 representatives from each committee, sub-committee, and council)

OPERATIONAL GOVERNANCE AND PROJECT MANAGEMENT COMMITTEE

(Liaison between the other Committees, Councils & Sub-Committees; Membership includes PI + the leads of the focused working groups)

ADVISORY COUNCILS & SUB-COMMITTEES

Community Advisory Board (CAB)

*"Community
Voices"
(Diverse
populations from
the Riverdale
community – i.e.,
families)

*"Community
Organizations and
Partners"
(educators,
religious leaders,
program
coordinators)

* = Decision making groups with voting power

CENTRAL PROCESSES (Focused Working Groups)

Knowledge Translation
& Mobilization

Evaluation and
Theory of Change

Project Management

Intervention
Development

Recruitment and
Community Engagement

*CO-INVESTIGATORS
(All named co-
investigators and leads
plus additional co-
investigators as invited
onto the project)

COLLABORATORS
(All other individuals
and organizations
with a stake in the
project overall—
members will receive
project updates)

Figure 3