

Zika epidemic in Colombia and environmental and sociodemographic contributors: an application of a space-time Markov switching model

Laís Picinini Freitas ^{a,b,1*} & Dirk Douwes-Schultz^{c,1*}, Alexandra M. Schmidt^c, Brayan Ávila Monsalve^d, Jorge Emilio Salazar Flórez^e, César García-Balaguera^d, Berta N. Restrepo^e, Gloria I. Jaramillo-Ramírez^d, Mabel Carabali^c, Kate Zinszer^{a,b}

^aÉcole de Santé Publique, Université de Montréal, Montréal, Canada

^bCentre de Recherche en Santé Publique, Montréal, Canada

^cDepartment of Epidemiology, Biostatistics and Occupational Health, McGill University, Montréal, Canada

^dFaculty of Medicine, Universidad Cooperativa de Colombia, Villavicencio, Colombia

^eInstituto Colombiano de Medicina Tropical, Universidad CES, Medellín, Colombia

¹L.P.F. and D.D.S. contributed equally to this work.

*Correspondence: lais.picinini.freitas@umontreal.ca, dirk.douwes-schultz@mail.mcgill.ca

ABSTRACT

1 **Zika, a viral disease transmitted to humans by the bite of infected *Aedes* mosquitoes, emerged in the Americas in 2015,**
2 **causing large-scale epidemics. Colombia alone reported 72,031 Zika cases between 31/May/2015 and 01/October/2016.**
3 **We used national surveillance data from 1,121 municipalities over 70 epidemiological weeks to identify sociodemographic**
4 **and environmental factors associated with Zika's emergence, re-emergence, persistence, and transmission intensity in Colombia.**
5 **We fitted a zero-state Markov-switching spatio-temporal model under the Bayesian framework, assuming Zika switched**
6 **between periods of presence and absence according to spatially and temporally varying probabilities of emergence/re-emergence**
7 **(from absence to presence) and persistence (from presence to presence). These probabilities were assumed to follow a series**
8 **of mixed multiple logistic regressions. When Zika was present, assuming that the cases follow a negative binomial distribution,**
9 **we estimated the transmission intensity rate. Our results indicate that Zika emerged/re-emerged sooner and that transmission**
10 **was more intense in municipalities which were more densely populated, with lower altitude and/or less vegetation cover.**
11 **Higher weekly temperatures and less weekly-accumulated rain were also associated with Zika emergence. Zika cases persisted**
12 **for longer in more densely populated areas and with a higher number of cases reported in the previous week. Overall, population**
13 **density, elevation, and temperature were identified as the main contributors of the first Zika epidemic in Colombia. The**
14 **estimated probability of Zika presence increased weeks before case reporting, suggesting undetected circulation in the**
15 **early stages. These results offer insights into priority areas for public health interventions against emerging and re-emerging**
16 ***Aedes*-borne diseases.**

17 INTRODUCTION

18 Zika virus emerged in several tropical countries and territories, causing large epidemics between 2014 and 2016. As for dengue
19 and chikungunya viruses, Zika is transmitted to humans by the bite of infected *Aedes* mosquitoes, mainly *Aedes aegypti*. These
20 diurnal mosquitoes are well adapted to urban settings, live in intradomicile and peridomicile spaces, reproduce in small collections
21 of fresh water, and are climate-sensitive. At the population-level, characteristics that vary in space (e.g. elevation) and in space and
22 time (e.g. temperature) impact *Aedes aegypti*'s presence, density, activity, and competence to transmit viruses. Hence, they may
23 also play a role in the spatio-temporal distribution of the diseases that are transmitted by *Aedes aegypti*, such as Zika.
24 Warmer temperatures were previously associated with an increased risk of *Aedes*-borne diseases¹⁻⁵. Up to 35°C, the increase in
25 temperature increases the speed of *Aedes aegypti*'s life cycle (resulting in mosquito population growth) and the biting rates, while
26 also decreases the extrinsic incubation period (which is the time taken between the mosquito ingesting the virus and becoming
27 infectious)^{6,7}. By contrast, Zika transmission and vector competence is drastically reduced below 20°C^{7,8}. Humidity has been associated
28 with the *Aedes aegypti* activity, survival and reproductive activity^{9,10}. Rainfall can fill small containers, such as any recipient from
29 uncollected waste with fresh water, forming ideal breeding sites for the *Aedes* mosquitoes to lay their eggs and live during the immature
30 stages⁹. For that reason, improper waste management also plays an important role in the risk of diseases transmitted by *Aedes*
31 *aegypti*, together with other factors that can increase the risk of exposure (e.g., housing materials, household crowding, access to
32 piped water), particularly in areas with lower socioeconomic conditions^{1,11-13}. Finally, higher human population densities increase
33 the chances of the mosquito-virus-human interaction.

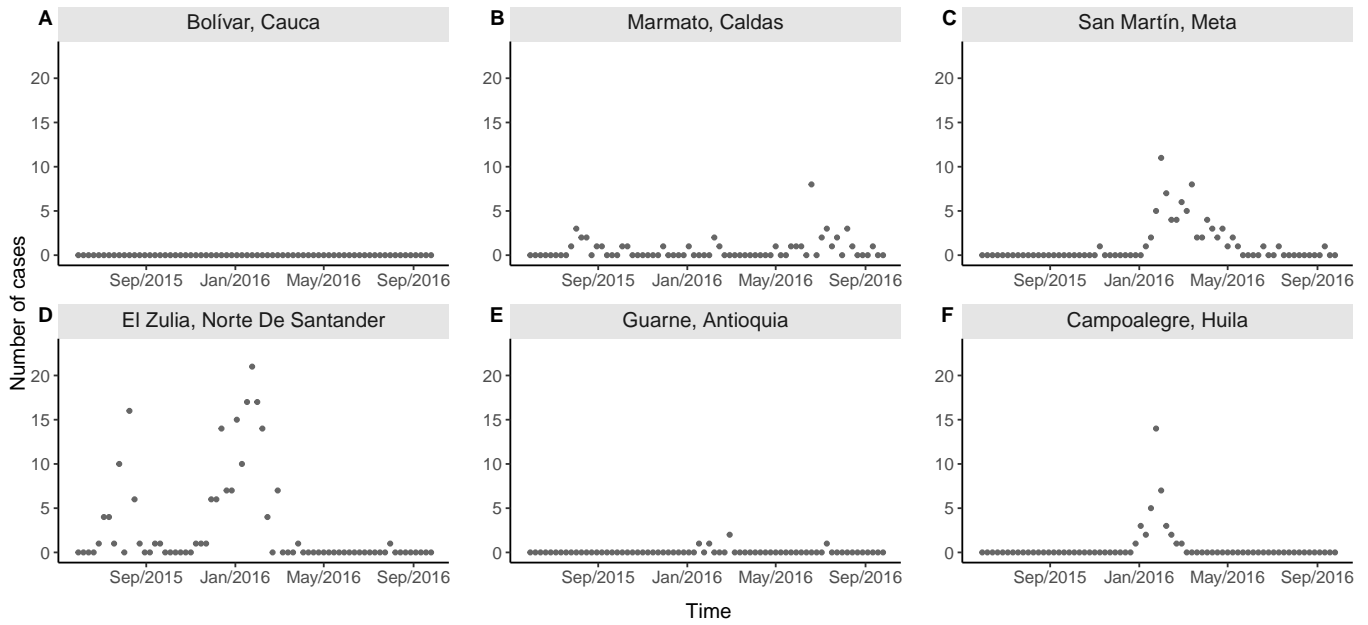


Figure 1: Examples of different temporal patterns of Zika reported cases counts by epidemiological week of first symptoms in selected municipalities of Colombia, epidemiological weeks 22/2015 to 39/2016: A) disease observed always absent in Bolívar (above 1800m of altitude and average temperature of 20°C); B) few cases reported intermittently in Marmato (above 1300m, 22°C); C) an observed emergence with very few cases followed by observed extinction and observed re-emergence with more cases being reported in San Martín (below 500m, 27°C); D) an early emergence followed by observed extinction and subsequent re-emergence in El Zulia (below 200m, 27°C); E) few and sporadic cases being reported in Guarne (above 2000m, 18°C); and F) an observed emergence followed by observed extinction in Campoalegre (around 500m, 24°C). Data source: Colombian National Public Health Surveillance System - *Sistema Nacional de Vigilancia en Salud Pública* (SIVIGILA).

34 Colombia has been endemic for dengue for decades, and the first Zika cases in the country were reported in August 2015 ^{14,15}.

35 Colombia has a very diverse geography, including islands, deserts, forests and mountain regions. Sociodemographic conditions also

36 vary greatly within the territory. A robust National Surveillance System (*Sistema Nacional de Vigilancia en Salud Pública* - SIVIGILA)

37 is implemented in the country, where all cases seeking care in health facilities with a probable or confirmed diagnosis of Zika must

38 be reported ¹⁶. SIVIGILA data have been used to study the spatio-temporal patterns of *Aedes*-borne diseases (namely dengue, Zika,

39 and chikungunya) in Colombia. However, most studies focused on a given municipality and/or department ^{11,17-25}, and only a few

40 considered the data for the whole country ^{15,26-30}. Among these, the studies applying statistical models ²⁶⁻²⁸ used data at the department

41 level.

42 One reason for the lack of nationwide spatio-temporal studies at the municipal level in Colombia is that across the territory, the distribution

43 of *Aedes*-borne diseases is highly heterogeneous. Figure 1 displays examples of the different temporal patterns of Zika reported

44 cases that can be observed across various geographically-distinctive Colombian municipalities. In some municipalities, there have

45 never been reports of Zika cases. In others, the reported disease cases alternate between long periods of no cases followed by long

46 periods of cases which are often interspersed with zero cases and occur at different magnitudes overtime. This complex type of

47 data structure does not fit with most conventional statistical count models, such as Poisson or negative binomial regression models,

48 due to the large number of zeroes ³¹. Also, while zero-inflated models can inflate the probability of observing a zero count ³², they

49 would likely not be able to explain well the excessive numbers of consecutive zeroes ³³.

50 In ³⁴ they proposed a zero-state Markov switching model to address the challenging statistical task of modeling an excessive number

51 of zeroes in spatio-temporal infectious disease counts. They assumed the disease switches between periods (i.e. *states*) of presence

52 and absence in each area through a series of Markov chains. This usually means that when the disease is in a given state it is more

53 likely to remain in that state. Therefore, their model can produce long strings of zeroes and long periods of positive counts, interspersed

54 with zeroes, as is commonly observed in spatio-temporal counts of infectious disease cases. Also, unlike existing zero-inflated models,

55 this approach allowed the distinction between the re-emergence (absence to presence) and persistence (presence to presence) of

56 the disease which is epidemiologically justified in many instances ^{34,35}. Our approach, explained in more detail below, extends ³⁴ by

57 adding an initial absence period to their model as we are modeling the initial introduction of Zika in Colombia. We used the model

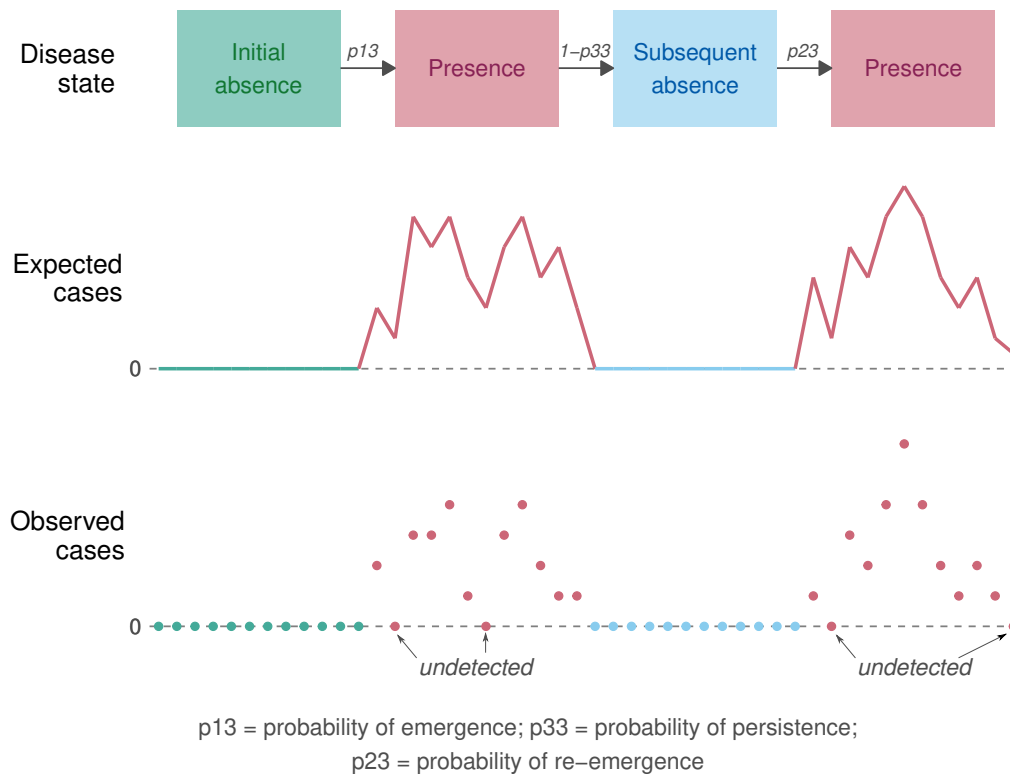


Figure 2: Diagram presenting the basic model structure considering three disease states: initial absence, presence, and subsequent absence.

58 to explore how environmental and sociodemographic factors were associated with the emergence, re-emergence, persistence, and
 59 transmission intensity of Zika across the 1,121 municipalities of Colombia between 31/May/2015 and 01/October/2016.

60 A diagram presenting our basic model structure is given in Figure 2. We assumed that Zika switched between periods of initial absence,
 61 presence, and subsequent absence in each of the municipalities according to spatially and temporally varying probabilities of Zika
 62 emergence, re-emergence, and persistence. These probabilities were assumed to follow a series of mixed multiple logistic regressions,
 63 allowing the estimation of associations with environmental and sociodemographic factors, such as temperature and population
 64 density, for example. When Zika was present in an area, the transmission intensity rate was modeled as a log-linear regression on
 65 environmental and sociodemographic factors. We recognize that zero reported cases can arise from either of the absence states,
 66 representing the true absence of the disease, or from the presence state, representing undetected Zika. Hence, an important aspect
 67 of our approach is that we can calculate the probability that a zero came from either of the *absence states* or from the *presence*
 68 *state*³⁴, and can therefore investigate where and when the disease was circulating undetected.

69 METHODS

70 In this ecological study, we analyzed the counts of Zika reported cases by municipality and week obtained from the Colombian National
 71 Public Health Surveillance System (*Sistema Nacional de Vigilancia en Salud Pública - SIVIGILA*).

72 Study site

73 Colombia is located in South America and has 1,141,748 km² and approximately 50.4 million inhabitants. The Colombian territory
 74 is divided into 1,121 municipalities that are grouped in 33 departments (Figures 3 and S1). The country borders with other five
 75 countries (Panama, Venezuela, Brazil, Peru and Ecuador), in addition to the Pacific Ocean to the west and the Caribbean Sea of the
 76 Atlantic Ocean to the north. Colombia's geography is very diverse and can be classified into six main natural regions: the Andes mountains,
 77 the Pacific coast, the Caribbean coast, the Llanos (savanna), the Amazon rain forest, and the insular area. Colombian climate is considered
 78 tropical and varies across its natural regions.



Figure 3: Localization of Colombia in the Americas and map of Colombia with the municipalities and geographical departments limits. (Sources: Colombian National Administrative Department of Statistics - DANE - geoportal. Background map tiles by Stamen Design, under CC BY 3.0. Data by OpenStreetMap, under ODbL.)

79 Zika cases data

80 We obtained Zika reported cases data in all Colombia from the SIVIGILA portal³⁶. We aggregated the cases by the epidemiological
 81 week of symptoms onset and municipality of residence. The resulting cases dataset comprises the counts of probable and confirmed
 82 Zika cases over 70 epidemiological weeks and 1,121 Colombian municipalities during the period of the first Zika epidemic in the
 83 country (between 31/May/2015 and 01/October/2016).

84 SIVIGILA publicly provides surveillance data that come from each department's Secretariat of Health. Probable and confirmed cases
 85 of Zika treated in public and private health facilities must be reported following the protocols of the National Institute of Health of
 86 Colombia¹⁶. Complete case definitions for Zika are included in the Supporting Information Text 1.

87 Environmental and sociodemographic data

88 The elevation (in meters) of each municipality (Figure S2A) was calculated for the centroid of the urban area using the packages
 89 `sf`³⁷ and `elevatr`³⁸ in `R`³⁹. The shapefile with the urban areas was obtained at the geoportal of the Colombian National Administrative
 90 Department of Statistics - *Departamento Administrativo Nacional de Estadística* (DANE)⁴⁰.

91 Other environmental data used in this work were previously organized and made publicly available by Siraj et al.⁴¹. From the data
 92 by epidemiological week and municipality, we calculated the average Normalized Difference Vegetation Index (NDVI) for the entire
 93 study period for each municipality (Figure S2B). The NDVI quantifies vegetation greenness by using remote sensing technologies.
 94 In our study area, the NDVI ranged from 0.22 to 0.80. Areas with NDVI close to +1 have a higher possibility of being dense vegetation
 95 cover, while those with values close to 0 of being more urban with little vegetation cover. We obtained for each epidemiological
 96 week and municipality the maximum temperature in Celsius degrees ($^{\circ}\text{C}$, Figures S2C and S3), the accumulated precipitation (in
 97 mm, Figures S2D and S4) and the relative humidity (in %, Figures S2E and S5).

98 The population estimates for 2015 and 2016 were obtained at the DANE website⁴². We calculated the population density by dividing
 99 the population of each municipality by its area in km^2 from a shapefile of the municipalities' limits obtained at the DANE geoportal⁴⁰.
 100 Figure S6A shows the map with the mean population density (2015-2016) by km^2 for each municipality.

101 Finally, we obtained the percentage of the population with unsatisfied basic needs (UBN) from the national census of 2018⁴³ (Figure
 102 S6B). The UBN is an index provided by DANE that captures socioeconomic vulnerabilities such as inadequate housing conditions,

103 overcrowded households, inadequate or no access to basic sanitation, children not attending school in the household, and household
 104 with elevated economic dependency⁴⁴.

105 Statistical model

106 Let y_{it} denote the number of Zika cases reported in municipality $i = 1, \dots, 1, 121$ during week $t = 1, \dots, 70$. We assumed that Zika
 107 could be in one of three disease states within each municipality i during each week t denoted by the indicator S_{it} ,

$$S_{it} = \begin{cases} 1, & \text{initial absence,} \\ 2, & \text{subsequent absence,} \\ 3, & \text{presence.} \end{cases}$$

108 If at least one Zika case was reported, i.e. $y_{it} > 0$, we assumed the disease was present, i.e. $S_{it} = 3$. However, Zika may have been
 109 circulating undetected and as such, S_{it} was treated as an unknown parameter in the model and estimated whenever $y_{it} = 0$.

If Zika was present ($S_{it} = 3$), we assumed the reported cases were generated by a negative binomial distribution and if Zika was
 absent ($S_{it} = 1$ or 2), that no cases were reported,

$$y_{it} \mid S_{it}, y_{i(t-1)} \sim \begin{cases} 0, & \text{if } S_{it} = 1 \text{ or } 2 \text{ (absence)} \\ NB(\lambda_{it}, r), & \text{if } S_{it} = 3 \text{ (presence),} \end{cases} \quad (1)$$

110 where λ_{it} is the expected number of reported cases given Zika was present and r is an overdispersion parameter so that the variance
 111 is given by $\lambda_{it} + \lambda_{it}^2/r$.

To capture the transmission process of Zika when it was present, we assumed that λ_{it} follows an endemic/epidemic model⁴⁵,

$$\lambda_{it} = \lambda_{it}^{AR} y_{i(t-1)} + \lambda_i^{BL}. \quad (2)$$

In (2), λ_{it}^{AR} represents the transmission intensity rate of Zika when it was present which was assumed to depend on a vector of spatio-temporal
 covariates \mathbf{x}_{it} through a mixed log-linear regression,

$$\log(\lambda_{it}^{AR}) = \beta_0^{AR} + b_i + c_{\text{dept}(i)} + \mathbf{x}_{it}^T \boldsymbol{\beta}, \quad (3)$$

112 where b_i and $c_{\text{dept}(i)}$ are zero mean municipality and department specific normal random intercepts. In (2), λ_i^{BL} is the baseline component
 113 representing the expected number of reported cases when no cases were reported in the previous week. We assumed λ_i^{BL} can
 114 vary between municipalities, so that, $\log(\lambda_i^{BL}) = \beta_0^{BL} + d_i$, where d_i is a municipality specific random intercept.

As we would generally expect periods of Zika presence and absence to last several consecutive weeks, we used a Markov chain for
 modeling the switching between the states. Therefore, the current disease state in municipality i S_{it} only depends on the previous
 state $S_{i(t-1)}$ and potentially on the covariates and random effects. The probabilities of transitioning from $S_{i(t-1)} = j$ to $S_{it} = k$ for
 $j, k = 1, 2, 3$ are given in the following within-area transition matrix,

$$\begin{array}{c} \mathbf{State} \\ S_{i(t-1)=1} \text{ (initial absence)} \\ S_{i(t-1)=2} \text{ (subsequent absence)} \\ S_{i(t-1)=3} \text{ (presence)} \end{array} \begin{array}{ccc} S_{it}=1 & S_{it}=2 & S_{it}=3 \\ \left[\begin{array}{ccc} 1 - p_{13it} & 0 & p_{13it} \\ 0 & 1 - p_{23it} & p_{23it} \\ 0 & 1 - p_{33it} & p_{33it} \end{array} \right]. \end{array} \quad (4)$$

The probability of Zika emerging in municipality i during week t , p_{13it} in (4), was assumed to depend on a vector of space-time covariates

\mathbf{z}_{it} through a mixed logistic regression,

$$\text{logit}(p_{13it}) = \eta_0 + e_{\text{dept}(i)} + \mathbf{z}_{it}^T \boldsymbol{\eta}, \quad (5)$$

115 where $e_{\text{dept}(i)}$ is a department (province) specific normal random intercept. As the disease states S_{it} and $S_{i(t-1)}$ were not known
116 when zero cases were reported, often the transition of (4) was not observable. Therefore, we did not include municipality specific
117 random intercepts in the transition probabilities as it made model fitting unstable due to the amount of missing information.

The probability of Zika re-emergence, p_{23it} in (4), was assumed to be equal to the probability of emergence plus a shift in intercept,

$$\text{logit}(p_{23it}) = \text{logit}(p_{13it}) + (\gamma_0 + f_{\text{dept}(i)} - \eta_0 - e_{\text{dept}(i)}). \quad (6)$$

118 The shift in intercept was needed to account for the study start date. For example, if the study began two weeks earlier, the probability
119 of emergence would reduce but the probability of re-emergence would not change. Also, as the disease established itself at some
120 point in time, there may have been a shift in conditions not entirely accounted for by the covariates.

Finally, the probability of Zika persistence, p_{33it} in (4), was modeled similarly to emergence but the covariates, \mathbf{w}_{it} , and their effects were allowed to differ,

$$\text{logit}(p_{33it}) = \zeta_0 + g_{\text{dept}(i)} + \mathbf{w}_{it}^T \boldsymbol{\zeta}. \quad (7)$$

121 **Model specification**

122 The relative humidity and the maximum temperature were included in the model lagged by one week to account for the time elapsed,
123 on average, between an infected mosquito biting a person and the onset of symptoms⁴⁶. The weekly accumulated precipitation
124 was lagged by four weeks to account for the additional time needed for a possible increase in the *Aedes* mosquitoes population
125 after a rainy week.

126 All covariates were included in the emergence (5), re-emergence (6), and transmission intensity rate (3) equations. For the transmission
127 intensity rate, we also considered the cumulative incidence of Zika up to four weeks prior and its square to account for the potentially
128 non-linear effect of the depletion of the susceptible population on the transmission intensity rate. The four weeks lag was defined
129 considering the average time elapsed between the person getting bitten by an infected mosquito and developing immunity against
130 the Zika virus⁴⁶⁻⁴⁸.

131 The largest factor affecting Zika persistence is likely the previous number of cases as the disease would continue to be present when
132 there are many infectious individuals. Therefore, due to a high amount of multicollinearity, we only included the previous week's
133 cases and the population density as covariates potentially associated with Zika persistence.

134 The population density and the previous week cases were log transformed to reduce high skewness. All covariates were standardized
135 to improve mixing of our Bayesian algorithm and to facilitate comparisons between covariate effect sizes.

136 **Model fitting**

137 To fit the model [1]-(7), we took the Bayesian approach described in³⁴. When there were no cases reported by a municipality, the
138 disease state of the model was not known as Zika could have been either absent, initially or subsequently, or present but undetected
139 by the surveillance system. To help quantify uncertainty in the unknown disease states whenever zero cases were reported by a
140 municipality, we calculated the posterior probability, i.e. the probability given all observed data, of Zika initial absence, presence, and
141 subsequent absence³⁴.

142 An initial distribution for the disease state in week 1 was required to fit the model. If a municipality reported a positive number of
143 cases in week 1, then we knew Zika was present, otherwise, we assumed there was a 5% chance Zika was present but undetected
144 and a 95% chance Zika was initially absent.

145 We fitted the models using **NIMBLE**⁴⁹⁻⁵¹ in **R**³⁹. Wide priors were assumed for all model parameters. Convergence was checked using

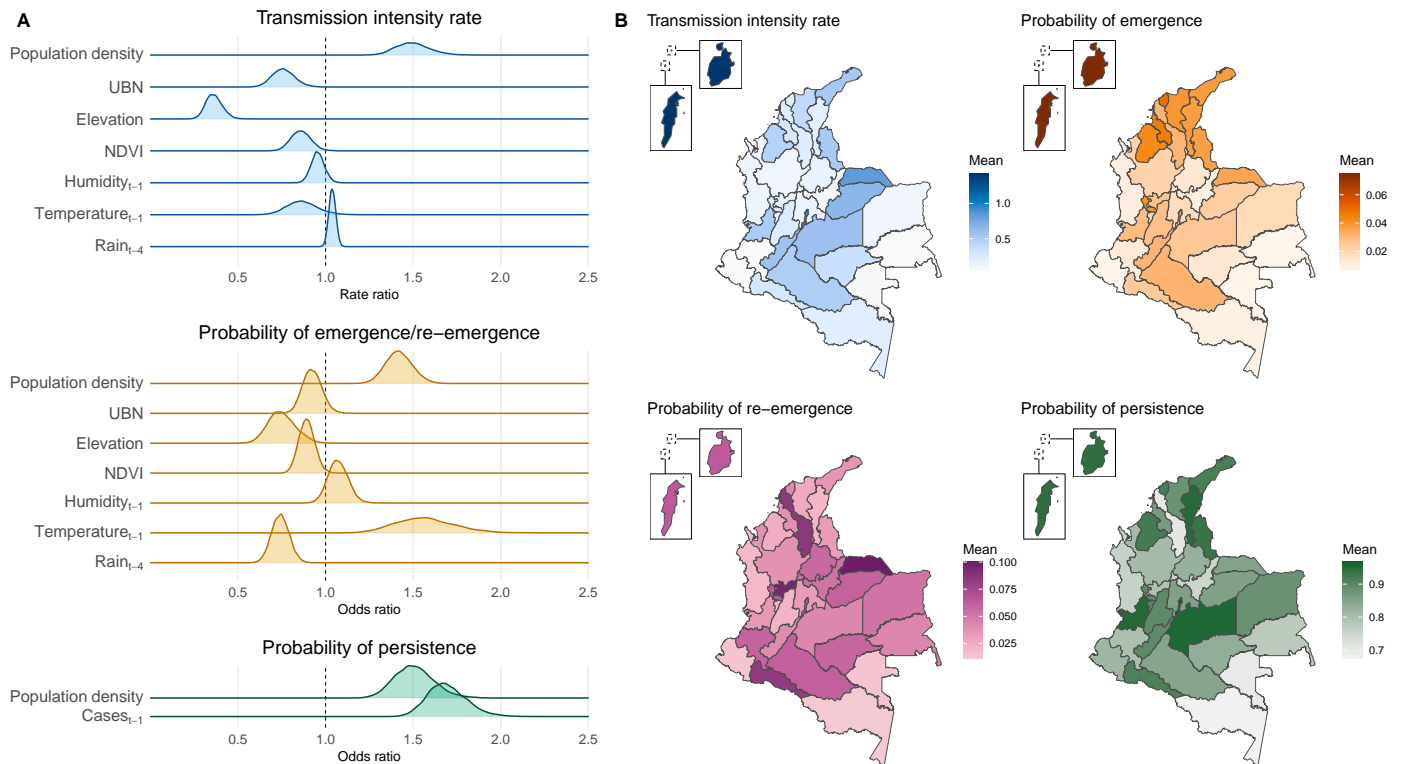


Figure 4: A) Posterior distribution of the rate ratio/odds ratio associated with standardized covariates* and the transmission intensity rate, probabilities of emergence and re-emergence, and probability of persistence of Zika, and B) posterior mean of the transmission intensity rate, probability of emergence, re-emergence, and persistence of Zika by department after adjusting for the department-specific random effect and the average values of the covariates in the department, epidemiological weeks 22/2015 to 39/2016, Colombia. *Population density and cases_{t-1} are log transformed. UBN = percentage of the population with unsatisfied basic needs. NDVI = Normalized Difference Vegetation Index.

146 the GelmanRubin statistic (all estimated parameters < 1.02), the minimum effective sample size (> 2000) and by visually examining
 147 the traceplots⁵². For the maps and graphs, we used `ggplot2`⁵³ and `colorspace`⁵⁴ in R³⁹. Codes are available in [https://github.com/](https://github.com/Dirk-Douwes-Schultz/Zika_Colombia_Markov_switching)
 148 [Dirk-Douwes-Schultz/Zika_Colombia_Markov_switching](https://github.com/Dirk-Douwes-Schultz/Zika_Colombia_Markov_switching).

149 To check model fit, we assessed plots of fitted values compared to observed values. Broadly, the fitted values were constructed through
 150 simulation from the fitted model. See the Supporting Information Text 2 for more details about model fitting, estimation of the
 151 unknown disease states, and the fitted values.

152 Ethical considerations

153 This study was approved by the Science and Health Research Ethics Committee (*Comité déthique de la recherche en sciences et en*
 154 *santé* - CERSES) of the University of Montreal, approval number CERSES-19-018-D.

155 RESULTS

156 Between epidemiological weeks 22/2015 and 39/2016, there were 72,031 Zika cases reported to the Colombian national surveillance
 157 system. The first cases were residents of three municipalities located in the department of Norte de Santander (San José de Cúcuta,
 158 El Zulia and Puerto Santander), at EW 26/2015. Valle del Cauca, Norte de Santander, and Santander were the departments with
 159 the highest number of reported cases (20,965, 8,666 and 8,659, respectively) (Figure S7). During the study period, 348 (31%) municipalities
 160 did not reported Zika cases (Table S1). The departments with higher percentage of municipalities not reporting Zika cases were
 161 Guainía, Vaupés, Nariño, Chocó, Amazonas and Boyacá. Higher cumulative incidences per 10,000 inhabitants were observed in
 162 municipalities south of the Colombian Andes and in the departments of Norte de Santander, Valle del Cauca and Archipelago of
 163 San Andrés, Providencia, and Santa Catalina (Figure S8).

164 **Zika association with covariates**

165 Figure 4A shows the posterior distribution of the transmission intensity rate ratio (TRR) and odds ratio (OR) associated with the covariates
166 in standardized form.

167 Assuming a 95% credible interval (CI), when Zika was present, transmission was more intense in areas with higher population density
168 (TRR mean 1.49, 95%CI 1.33;1.70), lower percentage of the population with unsatisfied basic needs (TRR 0.76, 95%CI 0.64;0.89),
169 lower altitude (TRR 0.36, 95%CI 0.28;0.46), and/or less vegetation cover (TRR 0.86, 95%CI 0.75;0.98). It is worth mentioning that
170 the transmission intensity rate showed a borderline direct association with the weekly accumulated rain (TRR 1.04, 95%CI 1.00;1.08,
171 lagged by four weeks).

172 Figure S9 shows the association between cumulative incidence (lagged by four weeks) and the Zika transmission intensity rate by
173 department after adjusting for the department-specific random effect and the average values of the covariates in the department.
174 A rapid decrease in the transmission intensity rate was estimated with the increase of the cumulative incidence up to 5 cases per
175 10,000 inhabitants, more apparent for the department of Archipelago of San Andrés, Providencia and Santa Catalina. Above 5 cases
176 per 10,000 inhabitants, the transmission intensity rate slightly decreases with the increase of the cumulative incidence.

177 Zika emerged and re-emerged sooner in municipalities with lower altitude (OR mean 0.75, 95%CI 0.61;0.91), less vegetation cover
178 (OR 0.89, 95%CI 0.81;0.98) and/or less weekly accumulated rain (OR 0.74, 95%CI 0.64;0.84, lagged by four weeks). Zika also emerged
179 and re-emerged sooner in more densely populated municipalities (OR 1.42, 95%CI 1.28;1.58) and/or with higher weekly maximum
180 temperatures (OR 1.56, 95%CI 1.27;1.92, lagged by one week).

181 The disease persisted for longer in more densely populated municipalities (OR mean 1.50, 95%CI 1.30;1.74). Controlled by the population
182 density, Zika was more likely to persist in a municipality when and where a higher number of cases was reported in the previous
183 week (OR 1.69, 95%CI 1.50;1.94).

184 **Department-specific transmission intensity rate and probabilities of emergence, re-emergence, and persistence**

185 After adjusting for the department-specific random effects and average values of the covariates in each department, higher transmission
186 intensity rates were estimated in the Archipelago of San Andrés, Providencia and Santa Catalina, followed by departments located
187 south of the Colombian Andes, Valle del Cauca, Norte de Santander, and in the north of the country (Figures 4B and S10). A similar
188 spatial pattern was observed for disease emergence, but departments in the north of the country showed, on average, a higher
189 probability of emergence compared to departments south of the Andes. However, it is worth mentioning that the differences in the
190 probability of emergence across the departments were very small (Figure S11). The same is true for the probability of re-emergence.
191 Zika was more likely to persist in the departments of Archipelago of San Andrés, Providencia and Santa Catalina, Meta, Bogotá D.C.,
192 Valle del Cauca, Córdoba, Cesar, Norte de Santander, La Guajira, and Putumayo (Figures 4B and S11).

193 **Zika transmission intensity rate**

194 Maps showing the evolution of the transmission intensity rate over the entire study period are displayed in Movie S1. The transmission
195 intensity rate generally declines over the study period as the susceptible population becomes depleted. The effects of the covariates
196 can be clearly seen in the spatial variation of the maps as municipalities located in the mountains typically experience much lower
197 transmission of Zika. Additionally, heterogeneity introduced by the random effects is also clearly visible. For example, there are certain
198 municipalities on the Pacific coast (in the departments of Chocó, Cauca, and Nariño) with very little transmission rates of Zika despite
199 being at a low elevation. At the beginning of the study period, the highest Zika transmission rates were observed in the municipalities
200 of San Andrés (Archipelago of San Andrés, Providencia and Santa Catalina department), Guadalajara de Buga (Valle del Cauca), Tauramena
201 (Casanare), Bucaramanga (Santander), and Saravena (Arauca).

202 Figure S12 depicts the posterior mean of the baseline expected number of reported cases by municipality, representing the expected
203 number of reported cases in a given week if no cases were reported in the previous week. It ranged from 0.13 in González (Cesar
204 department) to 2.86 in Chaguaní (Cundinamarca department). Higher baselines were mainly observed in some municipalities from
205 the departments of Cundinamarca, Magdalena, Norte de Santander, Valle del Cauca, Córdoba, Tolima, Antioquia, Casanare, and
206 Santander.

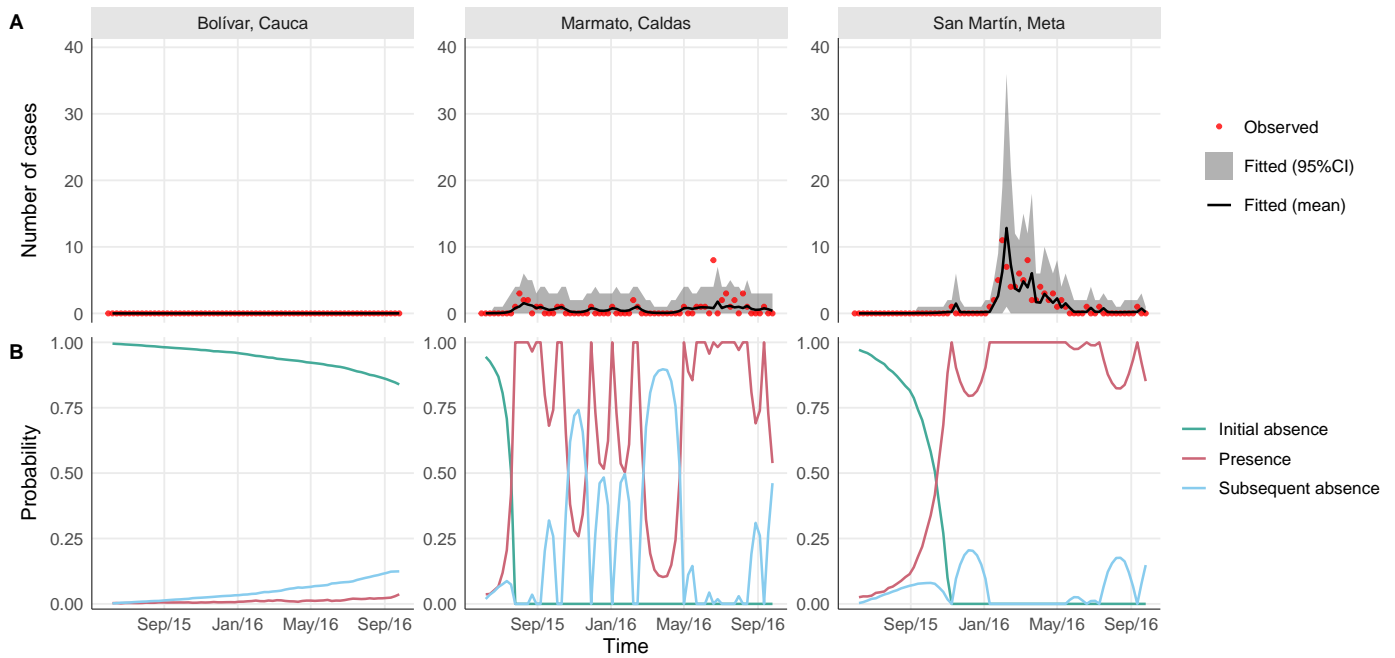


Figure 5: A) Observed versus fitted number of Zika cases (mean and 95% Credible Interval - CI) and B) posterior probability of initial absence, presence, and subsequent absence of Zika by epidemiological week (EW) in three selected municipalities, EWs 22/2015 to 39/2016, Colombia.

207 Fitted values and posterior probability of Zika presence

208 For Figure 5, we selected the first three municipalities from Figure 1 as examples to compare the observed number to the fitted
 209 number of Zika cases (first row) and the estimated posterior probabilities of each disease state (second row).

210 As can be seen in the first row of Figure 5, the fitted model was able to reproduce the reported number of cases well. The fitted mean
 211 follows the observed trend and the 95% credible intervals capture the majority of the observations. Note for the second row of Figure 5,
 212 that when cases were reported by a municipality, the posterior probability of Zika being present was always 1. Otherwise, if zero
 213 cases were reported, the disease could have either been absent, initially (probability given by green line) or subsequently (blue line),
 214 or present but undetected (red line). In Marmato and San Martín, the posterior probability of Zika presence began to increase noticeably
 215 several weeks before the first reported cases and the posterior probability remained high when no cases were reported afterwards.
 216 In general, as the number of consecutive weeks with no cases being reported increased, the model becomes more certain that Zika
 217 is truly absent and not undetected. In Bolívar, which never reported any cases, the model estimated a 15% chance that Zika was no
 218 longer in the initial absence state in the last week, implying it may have circulated undetected at some earlier point in time. These
 219 patterns in the posterior probabilities were typical across the other municipalities.

220 In Figure 6, we compared the maps with the posterior probability of Zika presence (first row) with the maps with the observed number
 221 of reported cases (second row) at four different moments during the study period. The maps for the entire study period are displayed
 222 in Movie S2. When there are reported cases, the probability of Zika presence was always 1. However, we observed that the estimated
 223 probability of Zika presence increased before cases began to be reported, and remained high in certain municipalities, some of which
 224 had no reported cases of Zika. This was partly due to the department specific random intercepts in the model, as municipalities
 225 with no cases would have an increased probability of Zika presence if other municipalities in the same department reported cases.

226 DISCUSSION

227 In this work, we studied the first Zika epidemic in Colombia using a novel modeling approach, which could manage the excessive
 228 amount of zeros in the data as well as the different temporal patterns of reported cases between the municipalities. The proposed
 229 model estimated the association of environmental and sociodemographic covariates with the probabilities of emergence, re-emergence,
 230 and persistence, and with the transmission intensity rate of Zika. Our results suggest that the population density, elevation, and
 231 maximum temperature were the main contributors of the first Zika epidemic in Colombia. We were also able to estimate the probability

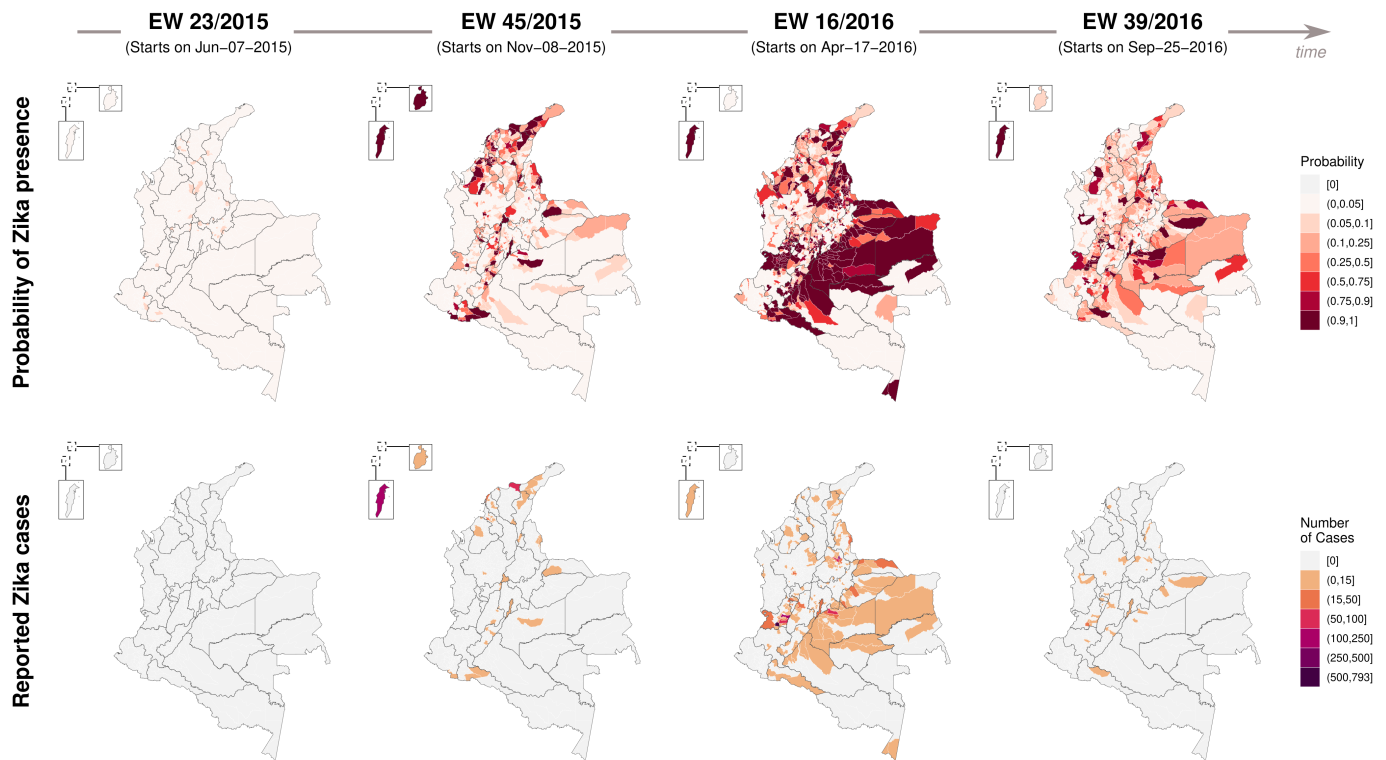


Figure 6: Posterior probability of Zika presence (first row) and observed number of reported Zika cases (second row) by municipality in four moments of time between epidemiological weeks (EWs) 22/2015 and 39/2016, Colombia.

232 of Zika presence by week and municipality, which often increased before the first official report of Zika.

233 Population density had a strong positive association with the transmission intensity rate, the probabilities of emergence, re-emergence,
 234 and persistence of Zika (Figure 4A). Although an emerging virus may enter a territory through a smaller city, it will likely establish
 235 itself more readily in larger cities with higher population densities, from where it may spread to the rest of the territory¹⁵. Densely
 236 populated areas provide more opportunities for the virus to infect vectors and humans.

237 We found an inverse association between the percentage of the population with unsatisfied basic needs and the Zika transmission
 238 intensity rate, and the direction of this association needs to be interpreted with caution. The majority of municipalities with higher
 239 percentages of their populations with unsatisfied basic needs belong to the following departments: Chocó, Nariño, Vichada, Guainía,
 240 Vaupés, Amazonas, and La Guajira (Figure S6B). Among the 138 municipalities of these departments, 95 (or 68.8%) did not report
 241 any cases of Zika during the study period (Figure S8). These particular locations are known to have problems of underreporting
 242 and the local populations face important barriers to access the health system. These can be explained by the presence of extensive
 243 jungle-covered areas, an ongoing violent conflict, a limited number of healthcare facilities, and potentially weaker surveillance systems
 244 compared to other areas. Nonetheless, the inverse association found could be a consequence of the spatial unit size used in the
 245 analysis. In Colombia, there are important social inequalities that cannot be fully captured by a single socioeconomic index value
 246 for an entire municipality. To better understand the role of socioeconomic conditions in the Zika epidemic, it may be necessary to
 247 work with smaller spatial units in order to have sufficient resolution to capture these inequalities.

248 Zika's transmission intensity rate, probability of emergence and probability of re-emergence were higher in more urban municipalities,
 249 i.e., with less vegetation cover (represented by the NDVI), and/or with lower altitude (Figure 4A). The inverse association with NDVI
 250 may be explained by the preference of *Aedes aegypti* for urban settings⁵⁵, and also by the presence of heat islands in urban settings
 251 affecting the microclimate. The estimated effect of elevation and temperature on the transmission intensity rate needs to be interpreted
 252 with caution. It should not be concluded that there is no association between temperature and transmission intensity, only that,
 253 after accounting for elevation, the temperature effect was very small towards null. As can be seen in Figure S2 panels A and C, temperature
 254 and elevation had a strong inverse correlation, with areas with lower temperatures mostly found at higher elevations. Therefore,

255 areas with low temperatures did experience lower transmission of Zika on average. Also, the temperature in Colombia remained
256 relatively constant over time (Figure S3), mainly varying spatially. Therefore, it is possible that elevation was capturing part of the
257 association between the Zika transmission intensity rate and temperature.

258 Climate factors (temperature and rain) were strongly associated with the emergence and re-emergence of Zika but less so with
259 its transmission intensity rate (Figure 4A). In addition to the possible explanations discussed above, it is possible that there were
260 interactions between different climate factors (including but not limited to temperature, humidity and rain) that would require more
261 complex modeling structures to be captured. We hypothesize that climate factors, along with elevation and NDVI, captured the
262 presence of the *Aedes aegypti* mosquitoes, which is necessary for local transmission to occur. Using climate data as proxies of the
263 mosquitoes' presence is advantageous, as such data tend to be more readily available than mosquito data.

264 An inverse association between rain and the probabilities of Zika emergence and re-emergence was found. During the study period
265 (2015-2026), the El Niño event was affecting South America, causing warmer temperatures and droughts in Colombia and boosting
266 the transmission of *Aedes*-borne diseases^{56,57}. A negative association between precipitation and the number of dengue cases was
267 found in a previous study evaluating the effects of local climate and El Niño in Colombia⁵⁷. Analyzing data by department, Chien
268 et al.²⁶ found both positive and negative associations between rain and the risk of Zika in Colombia. Although rain may increase
269 mosquito density by creating potential breeding sites, heavy rain can wash away the eggs and larvae. Also, droughts may result in
270 people storing water in improvised containers inside their households as a response to water supply interruptions. These improvised
271 water-filled containers are well-suited for *Aedes aegypti* breeding and may favor an increase in mosquito density. An association
272 between periods of drought and increased risk of *Aedes*-borne diseases has been previously described^{5,58}.

273 The increase in the probability of disease presence weeks before the first reported cases, indicates that Zika circulated undetected
274 in the early phases of the epidemic. This is expected, considering that Zika was a new emerging disease and there was no active
275 surveillance implemented to detect the entry of the virus into the country. The model presented in this study has the potential to
276 be adapted for similar scenarios and provide insight to inform our understanding of emerging and re-emerging diseases' spatio-temporal
277 distributions and, ultimately, help guide control and prevention strategies. The results may also indicate locations with notifiable
278 disease reporting issues when a high probability of disease presence is estimated but when no cases are reported.

279 We recommend the implementation of effective measures, including enhanced surveillance and vector-control strategies, in Colombian
280 urban centers, particularly those with high population density. These measures are essential for mitigating the introduction of other
281 emerging viruses transmitted by *Aedes*, as well as reducing the burden of the *Aedes*-borne diseases that are already endemic in the
282 country. On the other hand, the processes of urbanization, resulting in increased population density and loss of vegetation cover,
283 increase the risk of *Aedes*-transmitted diseases. Therefore, strategies for sustainable human development that prioritize the preservation
284 and augmentation of vegetation cover should be considered in order to effectively combat these diseases. Additionally, ensuring
285 access to piped water without supply interruptions is crucial. When that is not feasible, the population should also be educated and
286 provided with means to correctly store water to prevent the creating of breeding sites for the mosquitoes.

287 This study has limitations. Despite the SIVIGILA protocol foreseeing active surveillance in certain situations, most Zika reported cases
288 come from passive surveillance¹⁶. Hence, our study population included mostly patients who developed symptoms and sought
289 health care. Also, the observed counts may be underestimated. Underreporting is a common limitation when working with surveillance
290 data and has been detected in Colombia's surveillance system⁵⁹. The majority of cases were confirmed by clinical and epidemiological
291 criteria, with only a small proportion being laboratory-confirmed. We aggregated the data based on municipality of residence, although
292 cases may have been infected elsewhere. The climate factors were included in the model with predefined lags, although we acknowledge
293 that more complex structures considering different lags, interactions, and possibly nonlinear effects may be necessary to better
294 capture the association between climate and *Aedes*-borne diseases⁶⁰. Including such structures in the scope of the present work
295 is challenging, considering the large number of model parameters, areas, and time points.

296 The range of the *Aedes aegypti* mosquito has been expanding as a consequence of global warming⁶¹. This is resulting in increased
297 occurrence of *Aedes*-transmitted diseases in endemic areas but also the emergence in previously unaffected areas⁶². Large epidemics
298 of Zika can occur in areas where most of the population was never exposed to the virus. Although Zika is usually mild, infection during

299 pregnancy can cause congenital malformation in the fetus and its risk should not be neglected⁶³. Our model can be used to better
300 understand the factors contributing to disease emergence, re-emergence, persistence, and transmission intensity at high spatial
301 and temporal resolution. This can provide valuable insights into the characteristics of areas that should be prioritized for interventions
302 such as vector-control measures, enhanced surveillance, and public health campaigns.

DATA AVAILABILITY

The data used in this study are secondary data and are publicly available. The data on Zika cases can be downloaded at the SIVIGILA website (<http://portalsivigila.ins.gov.co/>). Population data and the percentage of people with unsatisfied basic needs can be found at the DANE website (<https://www.dane.gov.co/>). Environmental data was organized and made available by Siraj et al.⁶⁴ (<https://doi.org/10.5061/dryad.83nj1>). Processed data and codes are available in https://github.com/Dirk-Douwes-Schultz/Zika_Colombia_Markov_switching.

ACKNOWLEDGMENTS

The authors would like to thank the healthcare workers who collect the surveillance data from the patients and report the cases, and the National Institute of Health of Colombia for making the diseases' surveillance data publicly available. We also would like to thank Dr. Siraj and collaborators for processing and making the environmental data available. This work was supported by the Canadian Institutes of Health Research (CIHR), grant number 428107. Douwes-Schultz is grateful for financial support from IVADO and the Canada First Research Excellence Fund/Apogée (PhD Excellence Scholarship 2021-9070375349). Schmidt acknowledges financial support from the Natural Sciences and Engineering Research Council (NSERC) of Canada (Discovery Grants RGPIN-2017-04999). The funders had no role in study design, data collection and analysis, decision to publish, or preparation of the manuscript.

AUTHOR CONTRIBUTIONS

L.P.F., D.D.S., K.Z., A.M.S., M.C., G.I.J.R., C.G.B., B.N.R. conceptualized research. L.P.F. and D.D.S. designed research, performed research, analyzed data and wrote the paper. A.M.S., B.A.M., J.E.S.F., C.G.B., B.N.R., G.I.J.R., M.C. and K.Z. reviewed and approved the paper.

AUTHOR COMPETING INTERESTS

The authors declare no competing interests.

REFERENCES

- [1] Laís Picinini Freitas, Alexandra M. Schmidt, William Cossich, Oswaldo Gonçalves Cruz, and Marília Sá Carvalho. Spatio-temporal modelling of the first chikungunya epidemic in an intra-urban setting: The role of socioeconomic status, environment and temperature. *PLOS Neglected Tropical Diseases*, 15(6):e0009537, June 2021.
- [2] Zhiwei Xu, Hilary Bambrick, Laith Yakob, Gregor Devine, Jiahai Lu, Francesca D. Frentiu, Weizhong Yang, Gail Williams, and Wenbiao Hu. Spatiotemporal patterns and climatic drivers of severe dengue in Thailand. *Science of The Total Environment*, 656:889–901, March 2019.
- [3] Wenbiao Hu, Archie Clements, Gail Williams, Shilu Tong, and Kerrie Mengersen. Spatial patterns and socioecological drivers of dengue fever transmission in Queensland, Australia. *Environmental Health Perspectives*, 120(2):260–266, February 2012.
- [4] Rachel Lowe, Trevor C. Bailey, David B. Stephenson, Richard J. Graham, Caio A.S. Coelho, Marília Sá Carvalho, and Christovam Barcellos. Spatio-temporal modelling of climate-sensitive disease risk: Towards an early warning system for dengue in Brazil. *Computers & Geosciences*, 37(3):371–381, March 2011.
- [5] Rachel Lowe, Antonio Gasparrini, Cédric J. Van Meerbeeck, Catherine A. Lippi, Roché Mahon, Adrian R. Trotman, Leslie Rollock, Avery Q. J. Hinds, Sadie J. Ryan, and Anna M. Stewart-Ibarra. Nonlinear and delayed impacts of climate on dengue risk in Barbados: A modelling study. *PLOS Medicine*, 15(7):e1002613, July 2018.
- [6] Erin A. Mordecai, Jeremy M. Cohen, Michelle V. Evans, Prithvi Gudapati, Leah R. Johnson, Catherine A. Lippi, Kerri Miazgowiec, Courtney C. Murdock, Jason R. Rohr, Sadie J. Ryan, Van Savage, Marta S. Shocket, Anna Stewart Ibarra, Matthew B. Thomas, and Daniel P. Weikel. Detecting the impact of temperature on transmission of Zika, dengue, and chikungunya using mechanistic models. *PLOS Neglected Tropical Diseases*, 11(4):e0005568, April 2017.
- [7] Olivia C. Winokur, Bradley J. Main, Jay Nicholson, and Christopher M. Barker. Impact of temperature on the extrinsic incubation period of Zika virus in *Aedes aegypti*. *PLOS Neglected Tropical Diseases*, 14(3):e0008047, March 2020.
- [8] Blanka Tesla, Leah R. Demakovsky, Erin A. Mordecai, Sadie J. Ryan, Matthew H. Bonds, Calistus N. Ngonghala, Melinda A. Brindley, and Courtney C. Murdock. Temperature drives Zika virus transmission: evidence from empirical and mathematical models. *Proceedings of the Royal Society B: Biological Sciences*, 285(1884):20180795, August 2018.
- [9] Cory W. Morin, Andrew C. Comrie, and Kacey Ernst. Climate and dengue transmission: Evidence and implications. *Environmental Health Perspectives*, 121(11-12):1264–1272, November 2013.
- [10] Ethiene Arruda Pedrosa de Almeida Costa, Eloísa Maria de Mendonça Santos, Juliana Cavalcanti Correia, and Cleide Maria Ribeiro de Albuquerque. Impact of small variations in temperature and humidity on the reproductive activity and survival of *Aedes aegypti* (Diptera, Culicidae). *Revista Brasileira de Entomologia*, 54(3):488–493, 2010.
- [11] Mabel Carabali, Sam Harper, Antonio S. Lima Neto, Geziel Santos de Sousa, Andrea Caprara, Berta Nelly Restrepo, and Jay S. Kaufman. Spatiotemporal distribution and socioeconomic disparities of dengue, chikungunya and Zika in two Latin American cities from 2007 to 2017. *Tropical Medicine & International Health*, 26(3):301–315, December 2020.
- [12] Grace M Power, Aisling M Vaughan, Luxi Qiao, Nuria Sanchez Clemente, Julia M. Pescarini, Enny S. Paixão, Ludmila Lobkowicz, Amber I. Raja, André Portela Souza, Mauricio Lima Barreto, and Elizabeth B. Brickley. Socioeconomic risk markers of arthropod-borne virus (arbovirus) infections: a systematic literature review and meta-analysis. *BMJ Global Health*, 7(4):e007735, April 2022.
- [13] María C. Carrasquilla, Mario I. Ortiz, Cielo León, Silvia Rondón, Manisha A. Kulkarni, Benoit Talbot, Beate Sander, Heriberto Vásquez, Juan M. Cordovez, Camila González, Beate Sander, Manisha A. Kulkarni, Jianhong Wu, Camila González, Marcos Miretti, Mauricio Espinel, and Varsovia Cevallos and. Entomological characterization of aedes mosquitoes and arbovirus detection in ibagué, a colombian city with co-circulation of zika, dengue and chikungunya viruses. *Parasites & Vectors*, 14(1), September 2021.
- [14] Luis Angel Villar, Diana Patricia Rojas, Sandra Besada-Lombana, and Elsa Sarti. Epidemiological trends of dengue disease in Colombia (2000-2011): A systematic review. *PLOS Neglected Tropical Diseases*, 9(3):e0003499, March 2015.
- [15] Laís Picinini Freitas, Mabel Carabali, Mengru Yuan, Gloria I. Jaramillo-Ramírez, Cesar Garcia Balaguera, Berta N. Restrepo, and Kate Zinszer. Spatio-temporal clusters and patterns of spread of dengue, chikungunya, and Zika in Colombia. *PLOS Neglected Tropical Diseases*, 16(8):e0010334, August 2022.
- [16] Natalia Tolosa Pérez. Protocolo de vigilancia en salud pública. Enfermedad por Virus Zika, 2017.
- [17] Juan Ospina, Doracelly Hincapie-Palacio, Jesús Ochoa, Adriana Molina, Guillermo Rúa, Dubán Pájaro, Marcela Arrubla, Rita Almanza, Marlio Paredes, and Anuj Mubayi. Stratifying the potential local transmission of Zika in municipalities of Antioquia, Colombia. *Tropical Medicine & International Health*, 22(10):1249–1265, September 2017.
- [18] Talya Shragai, Juliana Pérez-Pérez, Marcela del Pilar Quimbayo-Forero, Raúl Rojo, Laura C. Harrington, and Guillermo Rúa-Urbe. Distance to public transit predicts spatial distribution of dengue virus incidence in Medellín, Colombia. *Scientific Reports*, 12(1), May 2022.
- [19] Mabel Carabali, Alexandra M. Schmidt, Berta N. Restrepo, and Jay S. Kaufman. A joint spatial marked point process model for dengue and severe dengue in Medellín, Colombia. *Spatial and Spatio-temporal Epidemiology*, 41:100495, June 2022.
- [20] Mabel Carabali, Mathieu Maheu-Giroux, and Jay S. Kaufman. Dengue, severity paradox, and socioeconomic distribution among afro-colombians. *Epidemiology*, 32(4):541–550, March 2021.
- [21] Aritz Adin, Daniel Adyoro Martínez-Bello, Antonio López-Quílez, and María Dolores Ugarte. Two-level resolution of relative risk of dengue disease in a hyperendemic city of Colombia. *PLOS ONE*, 13(9):e0203382, September 2018.
- [22] Daniel Adyoro Martínez-Bello, Antonio López-Quílez, and Alexander Torres-Prieto. Bayesian dynamic modeling of time series of dengue disease case counts. *PLOS Neglected Tropical Diseases*, 11(7):e0005696, July 2017.
- [23] Daniel Adyoro Martínez-Bello, Antonio López-Quílez, and Alexander Torres-Prieto. Relative risk estimation of dengue disease at small spatial scale. *International Journal of Health Geographics*, 16(1), August 2017.
- [24] Daniel Adyoro Martínez-Bello, Antonio López-Quílez, and Alexander Torres-Prieto. Joint estimation of relative risk for dengue and Zika infections, Colombia, 2015–2016. *Emerging Infectious Diseases*, 25(6):1118–1126, June 2019.
- [25] Eric Delmelle, Michael Hagenlocher, Stefan Kienberger, and Irene Casas. A spatial model of socioeconomic and environmental determinants of dengue fever in Cali, Colombia. *Acta Tropica*, 164:169–176, December 2016.

- [26] Lung-Chang Chien, Francisco Sy, and Adriana Pérez. Identifying high risk areas of Zika virus infection by meteorological factors in Colombia. *BMC Infectious Diseases*, 19(1), October 2019.
- [27] Lung-Chang Chien, Ro-Ting Lin, Yunqi Liao, Francisco S. Sy, and Adriana Pérez. Surveillance on the endemic of Zika virus infection by meteorological factors in Colombia: a population-based spatial and temporal study. *BMC Infectious Diseases*, 18(1), April 2018.
- [28] Karen Flórez-Lozano, Edgar Navarro-Lechuga, Humberto Llinás-Solano, Rafael Tuesca-Molina, Augusto Sisa-Camargo, Marcela Mercado-Reyes, Martha Ospina-Martínez, Franklyn Prieto-Alvarado, and Jorge Acosta-Reyes. Spatial distribution of the relative risk of Zika virus disease in Colombia during the 2015–2016 epidemic from a Bayesian approach. *International Journal of Gynecology & Obstetrics*, 148(S2):55–60, January 2020.
- [29] Luz Elena Triana-Vidal, Mónica Andrea Morales-García, María Janeth Arango-Cárdenas, Marisol Badiel-Ocampo, and Daniel Elías Cuartas. Análisis de la distribución espacial y temporal de los virus del Dengue (2006–2017), Zika (2015–2017) y Chikungunya (2014–2017) en Colombia. *Infectio*, 23(4):352, September 2019.
- [30] M.R. Desjardins, A. Whiteman, I. Casas, and E. Delmelle. Space-time clusters and co-occurrence of chikungunya and dengue fever in Colombia from 2015 to 2016. *Acta Tropica*, 185:77–85, September 2018.
- [31] Ali Arab. Spatial and Spatio-Temporal Models for Modeling Epidemiological Data with Excess Zeros. *International Journal of Environmental Research and Public Health*, 12(9):10536–10548, September 2015. Number: 9 Publisher: Multidisciplinary Digital Publishing Institute.
- [32] Diane Lambert. Zero-Inflated Poisson Regression, with an Application to Defects in Manufacturing. *Technometrics*, 34(1):1–14, 1992.
- [33] Cathy W. S. Chen, Khemmanant Khamthong, and Sangyeol Lee. Markov switching integer-valued generalized auto-regressive conditional heteroscedastic models for dengue counts. *Journal of the Royal Statistical Society: Series C (Applied Statistics)*, 68(4):963–983, 2019.
- [34] Dirk Douwes-Schultz and Alexander M. Schmidt. Zero-state coupled Markov switching count models for spatio-temporal infectious disease spread. *Journal of the Royal Statistical Society: Series C (Applied Statistics)*, 71(3):589–612, June 2022.
- [35] F. A. B. Coutinho, M. N. Burattinia, L. F. Lopeza, and E. Massada. Threshold Conditions for a Non-Autonomous Epidemic System Describing the Population Dynamics of Dengue. *Bulletin of Mathematical Biology*, 68(8):2263–2282, November 2006.
- [36] National Health Institute of Colombia and Ministry of Health of Colombia. Portal SIVIGILA. <http://portalsivigila.ins.gov.co/>, 2023. Accessed: 31-Mar-2023.
- [37] Edzer Pebesma. Simple Features for R: Standardized Support for Spatial Vector Data. *The R Journal*, 10(1):439–446, 2018.
- [38] Jeffrey Hollister, Tarak Shah, Alec L. Robitaille, Marcus W. Beck, and Mike Johnson. *elevatr: Access Elevation Data from Various APIs*, 2021. R package version 0.4.2.
- [39] R Core Team. *R: A Language and Environment for Statistical Computing*. R Foundation for Statistical Computing, Vienna, Austria, 2022.
- [40] National Administrative Department of Statistics of Colombia (DANE). Geoportal dane. <https://geoportal.dane.gov.co/>, 2023. Accessed: 31-Mar-2023.
- [41] Amir S. Siraj, Isabel Rodríguez-Barraquer, Christopher M. Barker, Natalia Tejedor-Garavito, Dennis Harding, Christopher Lorton, Dejan Lukacevic, Gene Oates, Guido Espana, Moritz U.G. Kraemer, Carrie Manore, Michael A. Johansson, Andrew J. Tatem, Robert C. Reiner, and T. Alex Perkins. Spatiotemporal incidence of Zika and associated environmental drivers for the 2015–2016 epidemic in Colombia. *Scientific Data*, 5:180073, April 2018.
- [42] National Administrative Department of Statistics of Colombia (DANE). Departamento administrativo nacional de estadística. <https://www.dane.gov.co/>, 2023. Accessed: 31-Mar-2023.
- [43] National Administrative Department of Statistics of Colombia (DANE). Necesidades Básicas Insatisfechas (NBI). <https://www.dane.gov.co/index.php/estadisticas-por-tema/pobreza-y-condiciones-de-vida/necesidades-basicas-insatisfechas-nbi>, 2018. Accessed: 31-Mar-2023.
- [44] Juan Carlos Feres and Xavier Mancero. *El método de las necesidades básicas insatisfechas (NBI) y sus aplicaciones en América Latina*. Number 7 in Serie estudios estadísticos y prospectivos. Naciones Unidas, CEPAL, Div. de Estadística y Proyecciones Económicas, Santiago de Chile, 2001.
- [45] Cici Bauer and Jon Wakefield. Stratified spacetime infectious disease modelling, with an application to hand, foot and mouth disease in China. *Journal of the Royal Statistical Society Series C*, 67(5):1379–1398, 2018. Publisher: Royal Statistical Society.
- [46] Tosca Fourié, Gilda Gard, Isabelle Leparc-Goffart, Sébastien Briolant, and Albin Fontaine. Variability of Zika Virus Incubation Period in Humans. *Open Forum Infectious Diseases*, 5(11), 10 2018. ofy261.
- [47] Elisabeth R. Krow-Lucal, Brad J. Biggerstaff, and J. Erin Staples. Estimated incubation period for Zika virus disease. *Emerging Infectious Diseases*, 23(5):841–845, May 2017.
- [48] Ling-Zhai Zhao, Wen-Xin Hong, Jian Wang, Lei Yu, Feng-Yu Hu, Shuang Qiu, Chi-Biao Yin, Xiao-Ping Tang, Lin-Qi Zhang, Xia Jin, and Fu-Chun Zhang. Kinetics of antigen-specific IgM/IgG/IgA antibody responses during Zika virus natural infection in two patients. *Journal of Medical Virology*, 91(5):872–876, December 2018.
- [49] Perry de Valpine, Daniel Turek, Christopher Paciorek, Cliff Anderson-Bergman, Duncan Temple Lang, and Ras Bodik. Programming with models: writing statistical algorithms for general model structures with NIMBLE. *Journal of Computational and Graphical Statistics*, 26:403–413, 2017.
- [50] Perry de Valpine, Christopher Paciorek, Daniel Turek, Nick Michaud, Cliff Anderson-Bergman, Fritz Obermeyer, Claudia Wehrhahn Cortes, Abel Rodriguez, Duncan Temple Lang, and Sally Paganin. *NIMBLE: MCMC, Particle Filtering, and Programmable Hierarchical Modeling*, 2022. R package version 0.13.1.
- [51] Perry de Valpine, Christopher Paciorek, Daniel Turek, Nick Michaud, Cliff Anderson-Bergman, Fritz Obermeyer, Claudia Wehrhahn Cortes, Abel Rodriguez, Duncan Temple Lang, and Sally Paganin. *NIMBLE User Manual*, 2022. R package manual version 0.13.1.
- [52] Martyn Plummer, Nicky Best, Kate Cowles, and Karen Vines. CODA: convergence diagnosis and output analysis for MCMC. *R News*, 6(1):7–11, March 2006. Number: 1.
- [53] Hadley Wickham. *ggplot2: Elegant Graphics for Data Analysis*. Springer-Verlag New York, 2016.
- [54] Achim Zeileis, Jason C. Fisher, Kurt Hornik, Ross Ihaka, Claire D. McWhite, Paul Murrell, Reto Stauffer, and Claus O. Wilke. *colorspace: A toolbox for manipulating and assessing colors and palettes*. *Journal of Statistical Software*, 96(1):1–49, 2020.
- [55] Hans J. Overgaard, Víctor Alberto Olano, Juan Felipe Jaramillo, María Inés Matiz, Diana Sarmiento, Thor Axel Stenström, and Neal Alexander. A cross-sectional survey of *Aedes aegypti* immature abundance in urban and rural household containers in central Colombia. *Parasites & Vectors*, 10(1), July 2017.
- [56] Cyril Caminade, Joanne Turner, Soeren Metelmann, Jenny C. Hesson, Marcus S. C. Blagrove, Tom Solomon, Andrew P. Morse, and Matthew Baylis. Global risk model for vector-borne transmission of Zika virus reveals the role of El Niño 2015. *Proceedings of the National Academy of Sciences*, 114(1):119–124, December 2016.
- [57] Estefanía Muñoz, Germán Poveda, M. Patricia Arbeláez, and Iván D. Vélez. Spatiotemporal dynamics of dengue in Colombia in relation to the combined effects of local climate and ENSO. *Acta Tropica*, 224:106136, December 2021.
- [58] Rachel Lowe, Sophie A Lee, Kathleen M O'Reilly, Oliver J Brady, Leonardo Bastos, Gabriel Carrasco-Escobar, Rafael de Castro Catão, Felipe J Colón-González, Christovam Barcellos, Marília Sá Carvalho, Marta Blangiardo, Håvard Rue, and Antonio Gasparrini. Combined effects of hydrometeorological hazards and urbanisation on dengue risk in Brazil: a spatiotemporal modelling study. *The Lancet Planetary Health*, 5(4):e209–e219, April 2021.
- [59] Mabel Carabali, Gloria I. Jaramillo-Ramirez, Vivian A. Rivera, Neila-Julieith Mina Possu, Berta N. Restrepo, and Kate Zinszer. Assessing the reporting of Dengue, Chikungunya and Zika to the National Surveillance System in Colombia from 2014–2017: A capture-recapture analysis accounting for misclassification of arboviral diagnostics. *PLOS Neglected Tropical Diseases*, 15(2):e0009014, February 2021.
- [60] Rachel Lowe, Antonio Gasparrini, Cédric J. Van Meerbeeck, Catherine A. Lippi, Roché Mahon, Adrian R. Trotman, Leslie Rollock, Avery Q. J. Hinds, Sadie J. Ryan, and Anna M. Stewart-Ibarra. Nonlinear and delayed impacts of climate on dengue risk in Barbados: A modelling study. *PLoS Medicine*, 15(7):e1002613, July 2018.
- [61] Felipe J Colón-González, Maquins Odhiambo Sewe, Adrian M Tompkins, Henrik Sjödin, Alejandro Casallas, Joacim Rocklöv, Cyril Caminade, and Rachel Lowe. Projecting the risk of mosquito-borne diseases in a warmer and more populated world: a multi-model, multi-scenario intercomparison modelling study. *The Lancet Planetary Health*, 5(7):e404–e414, July 2021.
- [62] Claudia T. Codeco, Sara S. Oliveira, Danielle A.C. Ferreira, Thais I.S. Riback, Leonardo S. Bastos, Raquel M. Lana, Iasmim F. Almeida, Vinícius B. Godinho, Oswaldo G. Cruz, and Flavio C. Coelho. Fast expansion of dengue in Brazil. *The Lancet Regional Health - Americas*, 12:100274, August 2022.
- [63] Maria C. Teixeira, Maria da Conceição N. Costa, Wanderson K. de Oliveira, Marília Lavocat Nunes, and Laura C. Rodrigues. The epidemic of Zika virus-related microcephaly in Brazil: Detection, control, etiology, and future scenarios. *American Journal of Public Health*, 106(4):601–605, April 2016.
- [64] Amir S. Siraj, I. Rodríguez-Barraquer, Christopher M. Barker, Natalia Tejedor-Garavito, Dennis Harding, Christopher Lorton, Dejan Lukacevic, Gene Oates, Guido Espana, Moritz U. G. Kraemer, Carrie Manore, Michael A. Johansson, Andrew J. Tatem, Robert C. Reiner, and T. Alex Perkins. Data from: Spatiotemporal incidence of Zika and associated environmental drivers for the 2015–2016 epidemic in Colombia, 2019. Dataset, Version Number: 2.