

1 **Critical Role for 24-Hydroxylation in Homeostatic Regulation of Vitamin D Metabolism**

2

3 Zhinous Shahidzadeh Yazdi, Elizabeth A. Streeten, Hilary B. Whitlatch,

4 May E. Montasser, Amber L. Beitelshes, and Simeon I. Taylor

5

6 Department of Medicine

7 Division of Endocrinology, Diabetes, and Nutrition

8 University of Maryland School of Medicine

9 Baltimore, MD, USA

10

11 Corresponding author: Simeon I. Taylor, MD, PhD, Department of Medicine, University of

12 Maryland School of Medicine, Baltimore, MD 21201, USA

13 Telephone number: +1 301 980 5272

14 Email: [staylor2@som.umaryland.edu](mailto:staylor2@som.umaryland.edu)

15

16 Conflict-of-interest statement: SIT serves as a consultant for Ionis Pharmaceuticals and receives  
17 an inventor's share of royalties from NIDDK for metreleptin as a treatment for generalized  
18 lipodystrophy. EAS, MEM, and HBW receive research support (unrelated to this project) from  
19 the Regeneron Genetics Center. ZSY and ALB have no conflicts to disclose.

20

21 Trial registration: NCT02891954 ([clinicaltrials.gov](https://clinicaltrials.gov))

22 Funding: National Institute of Diabetes, Digestive, and Kidney Diseases: R01DK118942,  
23 R01DK118924-02S1, and T32DK098107

24 Key words: vitamin D deficiency, 1,25-dihydroxyvitamin D, 24,25-dihydroxyvitamin D, 25-  
25 hydroxyvitamin D, parathyroid hormone, homeostatic regulation

26 ORCID ID# (Simeon I. Taylor): 0000-0001-7500-7854

27 **ABSTRACT**

28

29 Context. The body has evolved homeostatic mechanisms to maintain free levels of  $\text{Ca}^{+2}$  and  
30 1,25-dihydroxyvitamin D [ $1,25(\text{OH})_2\text{D}$ ] within narrow physiological ranges. Clinical guidelines  
31 emphasize important contributions of PTH in maintaining this homeostasis.

32 Objective. To investigate mechanisms of homeostatic regulation of vitamin D (VitD) metabolism  
33 and to apply mechanistic insights to improve clinical assessment of VitD status.

34 Design. Crossover clinical trial studying participants before and after VitD<sub>3</sub>-supplementation.

35 Setting. Community.

36 Participants. 11 otherwise healthy individuals with VitD-deficiency (25-hydroxyvitamin D  
37 [ $25(\text{OH})\text{D}$ ]  $\leq 20$  ng/mL).

38 Interventions. VitD<sub>3</sub>-supplements (50,000 IU once or twice a week depending on BMI, for 4-6  
39 weeks) were administered to achieve  $25(\text{OH})\text{D} \geq 30$  ng/mL.

40 Results. VitD<sub>3</sub>-supplementation significantly increased mean  $25(\text{OH})\text{D}$  by 2.7-fold and 24,25-  
41 dihydroxyvitamin D [ $24,25(\text{OH})_2\text{D}$ ] by 4.3-fold. In contrast, mean levels of PTH, FGF23, and  
42  $1,25(\text{OH})_2\text{D}$  did not change. Mathematical modeling suggested that 24-hydroxylase activity was  
43 maximal for  $25(\text{OH})\text{D} \geq 50$  ng/mL and achieved a minimum (~90% suppression) with  
44  $25(\text{OH})\text{D} < 10$ -20 ng/mL. The  $1,25(\text{OH})_2\text{D}/24,25(\text{OH})_2\text{D}$  ratio better predicted modeled 24-  
45 hydroxylase activity ( $h$ ) ( $\rho = -0.85$ ;  $p = 0.001$ ) compared to total plasma  $25(\text{OH})\text{D}$  ( $\rho = 0.51$ ;  $p = 0.01$ )  
46 and the  $24,25(\text{OH})_2\text{D}/25(\text{OH})\text{D}$  ratio ( $\rho = 0.37$ ;  $p = 0.3$ ).

47 Conclusions. Suppression of 24-hydroxylase provides a first line of defense against symptomatic  
48 VitD-deficiency by decreasing metabolic clearance of  $1,25(\text{OH})_2\text{D}$ . The

49 1,25(OH)<sub>2</sub>D/24,25(OH)<sub>2</sub>D ratio provides a useful index of VitD status since it incorporates  
50 24,25(OH)<sub>2</sub>D levels and therefore, provides insight into 24-hydroxylase activity. When VitD  
51 availability is limited, this suppresses 24-hydroxylase activity – thereby decreasing the level of  
52 24,25(OH)<sub>2</sub>D and increasing the 1,25(OH)<sub>2</sub>D/24,25(OH)<sub>2</sub>D ratio. Thus, an increased  
53 1,25(OH)<sub>2</sub>D/24,25(OH)<sub>2</sub>D ratio signifies triggering of homeostatic regulation, which occurs at  
54 early stages of VitD-deficiency.

55 **INTRODUCTION:**

56 Vitamin D (VitD) plays an essential role in mediating absorption of dietary calcium in the  
57 intestine (1-4). Furthermore, as evidenced by diseases such as nutritional rickets, VitD is critical  
58 to maintaining bone health (5, 6). The body obtains VitD from two sources. Endogenous  
59 production of VitD requires exposure to ultraviolet light, which is variable depending on  
60 geographic location and the season of the year among other factors. Dietary intake of VitD is also  
61 variable and depends on the VitD content of the diet (including intake of fortified dairy products  
62 and dietary supplements) (7, 8). To maintain a consistent *milieu intérieure* (9, 10), each  
63 individual must maintain levels of free 1,25-dihydroxyvitamin D [1,25(OH)<sub>2</sub>D] – the  
64 biologically active metabolite of VitD – within a narrow physiological range notwithstanding  
65 considerable variation in availability of the biosynthetic precursor (i.e., VitD) (11-13).

66 We developed a mathematical model to investigate physiological mechanisms mediating  
67 homeostatic regulation of VitD metabolism. 24-hydroxylation provides the major mechanism  
68 whereby 1,25(OH)<sub>2</sub>D is cleared (12, 14, 15). According to our mathematical model, *in vivo*  
69 activity of 24-hydroxylase varies over an approximately tenfold range. 24-Hydroxylase activity  
70 achieves a maximum when 25(OH)D levels exceed 50 ng/mL. By inducing 24-hydroxylase  
71 activity when VitD is abundant, the body increases clearance of 1,25(OH)<sub>2</sub>D – thereby protecting  
72 against VitD toxicity. Furthermore, the model suggests that 24-hydroxylase activity achieves a  
73 minimum when 25(OH)D is less than 10-20 ng/mL. The resultant decrease in 1,25(OH)<sub>2</sub>D  
74 clearance tends to sustain 1,25(OH)<sub>2</sub>D levels, thereby compensating for limited availability of  
75 VitD and protecting against symptomatic VitD deficiency.

76 Several feedback loops contribute to homeostatic regulation of VitD – including feedback loops  
77 between VitD status and the rates of both production and clearance of 1,25(OH)<sub>2</sub>D (12, 16-19).

78 Cannon proposed the concept of the “wisdom of the body” (9), which includes homeostatic  
79 mechanisms that are responsible for maintaining a constant *milieu intérieure*. Endocrinologists  
80 often leverage the “wisdom of the body” to diagnose states of hormonal excess or hormonal  
81 insufficiency based on the level of activation or suppression of homeostatic mechanisms. This is  
82 exemplified by the approach to diagnosing patients’ hormonal status with respect to hormones  
83 that act upon other nuclear hormone receptors (e.g., thyroid hormones or glucocorticoids) by  
84 measuring the levels of trophic hormones (e.g., TSH or ACTH) (20, 21). By analogy, we discuss  
85 our data in the context of the published literature advocating for a similar approach to assessing  
86 VitD status – i.e., by assessing the level of suppression/induction of 24-hydroxylase activity (22-  
87 24). By leveraging the wisdom of the body in this assessment, physicians can advance the state-  
88 of-the-art of assessment of VitD status.

89 The present work is a supplemental analysis of data obtained in a clinical trial investigating the  
90 nutrient-drug interaction between VitD and canagliflozin (13). That clinical trial provided data  
91 on the responses of PTH and VitD metabolites to VitD3 supplementation in participants whose  
92 baseline 25(OH)D was in the range of 10-20 ng/mL. We developed a mathematical model to  
93 investigate regulatory mechanism mediating these responses and also considered the clinical  
94 implications of the predictions by this model.

## 95    **METHODS**

96    This study (“VitD Sub-study”) was part of our ongoing “Genetics of Response to Canagliflozin  
97    (GRC)” clinical trial (Clinicaltrials.gov Identifier: NCT02891954) in healthy volunteers recruited  
98    from the Old Order Amish population in Lancaster PA, who are non-Hispanic white people.  
99    Although participants were excluded from the parent study if their 25(OH)D level  $\leq 20$  ng/mL,  
100    these VitD deficient individuals were eligible to participate in the VitD Sub-study, which  
101    investigated the effects of VitD3 supplements on canagliflozin-triggered changes in the serum  
102    phosphorus/FGF23/1,25(OH)<sub>2</sub>D/PTH axis (13). Participants were required to meet all other  
103    inclusion/exclusion criteria for the parent study. The effect of VitD3 supplementation on  
104    canagliflozin-induced changes in mineral metabolism biomarkers was reported elsewhere (13).  
105    The current paper reports results of a secondary data analysis focusing primarily on the effect  
106    VitD3 supplementation on VitD metabolites in participants with mild-moderate VitD deficiency.

### 107    Screening and recruitment:

108    As reported previously, we screened 24 healthy volunteers from September 2019 to July 2021  
109    and enrolled 19 individuals with 25(OH)D levels  $\leq 20$  ng/mL who were otherwise eligible to  
110    participate in the parent GRC study (13). The Endocrine Society’s clinical practice guidelines  
111    proposed thresholds of 25(OH)D  $\leq 20$  ng/mL ( $\leq 50$  nmol/L) for VitD deficiency, 21-29 ng/mL  
112    (51-74 nmol/L) for VitD insufficiency, and  $\geq 30$  ng/mL ( $\geq 75$  nmol/L) for VitD sufficiency (17).  
113    We applied The Endocrine Society’s definition of VitD deficiency ( $\leq 20$  ng/mL) as a key  
114    inclusion criterion for this sub-study and applied the definition of VitD sufficiency ( $\geq 30$  ng/mL)  
115    as the criterion for adequacy of VitD3 supplementation. Details of demographics, baseline  
116    characteristics, recruitment, and disposition are reported elsewhere (13). Because of interruptions  
117    and delays associated with the COVID-19 pandemic, we did not complete our plan to study 25

118 research participants. We analyzed data after eleven participants (four females and seven males)  
119 completed the entire study protocol.

#### 120 Endpoints and biomarkers:

121 We measured levels of the following biomarkers both at baseline and after VitD3  
122 supplementation: plasma PTH, plasma FGF23, serum phosphorus, serum calcium, and three  
123 VitD metabolites – 25(OH)D, 1,25(OH)<sub>2</sub>D, and 24,25-dihydroxyvitamin D [24,25(OH)<sub>2</sub>D].

#### 124 VitD3 supplementation protocol

125 VitD deficient participants completed canagliflozin challenge #1 and then received VitD3  
126 capsules (Bio-Tech Pharmacal; Fayetteville, AR) in doses of either 50,000 IU per week for  
127 participants with BMI <30 kg/m<sup>2</sup> or 50,000 IU twice a week for participants with BMI ≥30 kg/m  
128 for four weeks, followed by a second total serum 25(OH)D measurement a week after  
129 completion of the four-week VitD3 supplementation protocol (13). If screening serum 25(OH)D  
130 levels (Quest Diagnostics) were <30 ng/mL, high-dose VitD3 supplementation was continued.  
131 Once screening 25(OH)D (Quest Diagnostics) levels were confirmed to be ≥30 ng/mL,  
132 participants were administered the maintenance dose of VitD3 supplementation (1000 IU/d or  
133 2000 IU/d for BMI <30 kg/m<sup>2</sup> or BMI ≥30 kg/m<sup>2</sup>, respectively) for at least six weeks to allow  
134 them to re-equilibrate to a lower physiologic dose and to develop a new steady state. The  
135 maintenance dose was continued until completion of canagliflozin challenge #2.

#### 136 Clinical chemistry

137 Blood samples obtained at home visits were collected in test tubes as appropriate for each assay  
138 (13). Quest Diagnostics conducted an immunoassay for baseline levels of plasma PTH as well as  
139 LC-MS/MS assays to measure baseline serum 1,25(OH)<sub>2</sub>D, and serum 25(OH)D levels. Plasma

140 levels of 25(OH)D and 24,25(OH)<sub>2</sub>D were assessed using LC-MS/MS assays conducted by  
141 Heartland Assays (Ames, IA). Quest's serum 25(OH)D levels were used to determine eligibility  
142 for the VitD Sub-study. Heartland's plasma 25(OH)D levels were used to assess the response to  
143 VitD3 supplements. Participants were recruited to the parent study, which used Quest's 25(OH)D  
144 assay to screen for eligibility. Therefore, eligibility for the sub-study was also based on Quest's  
145 assay. The VitD sub-study used Heartland's assay to obtain data on 24,25(OH)<sub>2</sub>D levels. We also  
146 used Heartland's 25(OH)D assay to obtain data on 25(OH)D levels on the same day we obtained  
147 all the other data in the study. In contrast, the screening data on 25(OH)D were typically obtained  
148 at least one to two weeks prior to conducting the actual studies. We wanted to compare 25(OH)D  
149 levels on the day of screening to the 25(OH)D level on the day of the actual study to determine  
150 whether 25(OH)D levels had changed during that time interval. We have reported 25(OH)D and  
151 24,25(OH)<sub>2</sub>D in ng/mL and 1,25(OH)<sub>2</sub>D in pg/mL. Multiplication by a factor of 2.49 can be used  
152 to convert from ng/mL to nmol/L. Mean levels for 25(OH)D before and after VitD3  
153 supplementation, were identical in assays conducted by Quest Diagnostics and Heartland Assays  
154 (13). LC-MS/MS assays conducted at both Quest Diagnostics and Heartland Assays  
155 distinguished between derivatives of VitD2 and VitD3. Derivatives of VitD2 were not detected  
156 in any of our participants' samples. For simplicity, we refer to our data on levels of 25(OH)D,  
157 1,25(OH)<sub>2</sub>D, or 24,25(OH)<sub>2</sub>D without specifying D2 or D3. Nevertheless, since D2 derivatives  
158 were not detected in any of our participants, this should be understood as referring exclusively to  
159 D3 derivatives.

160 Quality control for VitD assays of VitD metabolites

161 Heartland Assays provided the following information regarding their assays of 25(OH)D and  
162 24,25(OH)<sub>2</sub>D: (a) accuracy >90% based on comparisons to National Institute of Standards and



163 Technology standards; and (b) coefficients of variation for both inter- and intra-assay  
164 comparisons were < 5%.

165 *Analysis of our data.* We obtained blood samples on three separate days during canagliflozin  
166 (300 mg/day) challenge tests: baseline prior to receiving canagliflozin, at 48 hours (after  
167 receiving canagliflozin for two days), and at 120 hours (after receiving canagliflozin for five  
168 days). Because mean levels of 25(OH)D and 24,25(OH)<sub>2</sub>D were not affected by canagliflozin,  
169 we calculated coefficients of variation based on an assumption that the three separate blood  
170 samples obtained from each individual during the canagliflozin challenge test had similar  
171 concentrations of those two VitD metabolites. Based on this assumption, we calculated  
172 coefficients of variation of 5.8% for 25(OH)D and 11.1% for 24,25(OH)<sub>2</sub>D. Because these  
173 calculated coefficients of variation included day-to-day variation in VitD metabolite levels as  
174 well as intra-assay variation, our estimates of coefficients of variation are likely greater than the  
175 actual intra-assay variation.

176 Furthermore, we compared mean data for 25(OH)D levels measured in the same individuals in  
177 the two assays. Mean 25(OH)D levels before receiving VitD3 supplements were 16.4 and 16.5  
178 ng/mL in the Quest and Heartland assays, respectively (13). Mean total 25(OH)D levels after  
179 receiving VitD3 supplements were 45.3 and 44.3 ng/mL in the Quest and Heartland assays,  
180 respectively (13). In addition, the individual data from the Quest assay (blood obtained on the  
181 day of screening) was highly correlated with individual data from the Heartland assay (blood  
182 obtained on Day 1 of the canagliflozin challenge test) – with variance in one assay accounting  
183 for 81% of the variance in the other assay. Based on these data, we conclude that the two assays  
184 provide comparable measurements of 25(OH)D levels. In any case, the Quest assay for 25(OH)D

185 was used only to determine eligibility for the study. The Heartland assay was the sole source of  
186 data on 25(OH)D levels used for determination of goodness-of-fit for our model.

187 Published analysis of Quest's assay of 1,25(OH)<sub>2</sub>D.

188 Biancuzzo et al. (25) reported intra- and inter-assay coefficients of variation of 9% and 12%,  
189 respectively, for Quest's assay of 1,25(OH)<sub>2</sub>D. In addition, we estimated the inter-assay  
190 coefficient of variation based on our observation that 1,25(OH)<sub>2</sub>D levels were not changed by  
191 administration of VitD3 supplements. When we calculated a coefficient of variation for  
192 1,25(OH)<sub>2</sub>D levels before and after VitD3 supplementation, we estimated a coefficient of  
193 variation of 13% – very similar to the inter-assay coefficient of variation reported by Biancuzzo  
194 et al. (25). Our calculation of coefficient of variation includes at least three components: the  
195 coefficient of variation for measurement error, day-to-day variation, and a possible small effect  
196 of VitD3 supplementation on 1,25(OH)<sub>2</sub>D levels. Thus, our estimate of the coefficient of  
197 variation represents an upper bound for the actual inter-assay coefficient of variation.

198 Mathematical Modeling

199 We developed a mathematical model to analyze relationships among 25(OH)D, 1,25(OH)<sub>2</sub>D, and  
200 24,25(OH)<sub>2</sub>D. See Table 1 for definitions of model parameters. For the purpose of fitting curves  
201 to model our clinical trial data, we estimated model parameters using an iterative trial and error  
202 approach.

203 The observed sigmoid curve expressing the concentration of total 24,25(OH)<sub>2</sub>D as a function of  
204 total 25(OH)D was fitted by an equation with the form of Equation (1):

205 (1) 
$$S(24,25) = \frac{\left(\frac{W_{24}}{L_{24}}\right)e^{aS(25)}}{1 + \frac{e^{aS(25)}}{L_{24}}}$$

206 where  $S(25)$  and  $S(24,25)$  represent levels of 25(OH)D and 24,25(OH)<sub>2</sub>D, respectively;  $W_{24}$  and  
207  $L_{24}$  represent analogs of the maximal velocity and Michaelis-Menten constant for 24-  
208 hydroxylase enzyme, respectively, with 25(OH)D as substrate;  $\alpha$  is a model parameter to  
209 facilitate fitting the equation to the observed data.

210 The model assumes that 24,25(OH)<sub>2</sub>D is cleared by a first order process with a rate constant of  
211  $m(24,25)$  [Equation (1a)]:

$$212 \quad (1a) \text{ Rate of clearance of } 24,25(OH)_2D = m(24,25) \frac{\left(\frac{W_{24}}{L_{24}}\right) e^{\alpha S(25)}}{1 + \frac{e^{\alpha S(25)}}{L_{24}}}$$

213 We hypothesized that the 24-hydroxylase enzyme follows Michaelis-Menten kinetics as  
214 described by Equation (2):

$$215 \quad (2) \text{ Production of } 24,25(OH)_2D = \frac{V_{24} \times h \times S(25)}{K_{24} + S(25)}$$

216 where  $S(25)$  represents the level of 25(OH)D;  $V_{24}$  and  $K_{24}$  represent the maximal velocity and  
217 Michaelis-Menten constant for 24-hydroxylase enzyme, respectively, with 25(OH)D as substrate.  
218  $h$  is a variable function of  $S(25)$  that represents 24-hydroxylase activity as a fraction of the  
219 maximally induced level of the enzyme observed when 25(OH)D levels are high.

220 At steady state, the rate of production of 24,25(OH)<sub>2</sub>D [Equation (2)] is equal to the rate at which  
221 24,25(OH)<sub>2</sub>D is cleared [Equation (1a)]. Accordingly, the value of  $h$  can be calculated by  
222 Equation (3):

$$223 \quad (3) \quad h = m(24,25) \frac{\left(\frac{W_{24}}{L_{24}}\right) e^{\alpha S(25)}}{1 + \frac{e^{\alpha S(25)}}{L_{24}}} \div \frac{V_{24} \times S(25)}{K_{24} + S(25)}$$

224 Genetic evidence demonstrates the critical role of CYP24A1-mediated 24-hydroxylation in  
225 inactivation of 1,25(OH)<sub>2</sub>D (26, 27). Homozygosity for loss of function mutations in *CYP24A1*

226 has been reported to cause hypercalcemia – presumably due to excessive levels of 1,25(OH)<sub>2</sub>D.  
 227 Since CYP24A1 catalyzes 24-hydroxylation of both 25(OH)D and 1,25(OH)<sub>2</sub>D, we modified  
 228 Equation (1a) to yield Equation (4):

$$229 \quad (4) \text{ Rate of clearance of } 1,25(OH)_2D = m(1,25) \frac{\left(\frac{W_{1,25}}{L_{1,25}}\right) e^{\alpha S(1,25)}}{1 + \frac{e^{\alpha S(1,25)}}{L_{1,25}}}$$

230 where  $S(1,25)$  represents the level of 1,25(OH)<sub>2</sub>D;  $W_{1,25}$  and  $L_{1,25}$  represent analogs of the  
 231 maximal velocity and Michaelis-Menten constant for 24-hydroxylase enzyme, respectively, with  
 232 1,25(OH)<sub>2</sub>D as substrate;  $\alpha$  is a model parameter that facilitates fitting the equation to the  
 233 observed data; and  $m(1,25)$  is a first-order rate constant analogous to  $m(24,25)$  in Equation (1a).  
 234 Further, we hypothesize that CYP27B1-mediated 1 $\alpha$ -hydroxylation of 25(OH)D follows  
 235 Michaelis-Menten kinetics:

$$236 \quad (5) \text{ Production of } 1,25(OH)_2D = \frac{V_1 \times S(25)}{K_1 + S(25)}$$

237 where  $V_1$  and  $K_1$  represent the maximal velocity and Michaelis-Menten constant for 1 $\alpha$ -  
 238 hydroxylase, respectively, with 25(OH)D as substrate. Under steady state conditions, the rates of  
 239 production and metabolic clearance of 1,25(OH)<sub>2</sub>D are equal. Thus, we can combine Equations  
 240 (4) and (5) to yield Equation (6):

$$241 \quad (6) \frac{V_1 \times S(25)}{K_1 + S(25)} = m(1,25) \frac{\left(\frac{W_{1,25}}{L_{1,25}}\right) e^{\alpha S(1,25)}}{1 + \frac{e^{\alpha S(1,25)}}{L_{1,25}}}$$

242 Solving for  $S(1,25)$ , we obtain Equation (7):

$$243 \quad (7) S(1,25) = \{Ln[S(25)] - Ln \left[ m_{1,25} + \frac{S(25)}{K_1} \left( m_{1,25} - \frac{V_1}{W_{1,25}} \right) \right] - Ln \frac{W_{1,25} K_1}{L_{1,25} V_1} \} / \alpha$$

244 Goodness of fit

245 We calculated the following metrics in order to evaluate the goodness of fit between our  
246 mathematical model and the experimental data:

247 Sum of squares due to regression:  $SSR = \sum(\hat{x}_i - \bar{x})^2$

248 Total sum of squares about the mean:  $SST = \sum(x_i - \bar{x})^2$

249 Sum of squared errors:  $SSE = \sum(x_i - \hat{x}_i)^2$

250 Data on goodness of fit is provided in the Results section as appropriate.

### 251 Estimating relative 24-hydroxylase activity

252 Equation (3) expresses relative 24-hydroxylase activity ( $h$ ) as a function of the 25(OH)D level.

253 However, total 25(OH)D levels are affected by inter-individual variation in VDBP levels, a

254 factor which is not included in our model. Accordingly, we replaced 25(OH)D levels by the ratio

255 of 25(OH)D/1,25(OH)<sub>2</sub>D. The 25(OH)D/1,25(OH)<sub>2</sub>D ratio is independent of VDBP level and

256 provides an index of free levels of 25(OH)D. To normalize values of this ratio to correspond to

257 values of total 25(OH)D, we first divided individual values of the 25(OH)D/1,25(OH)<sub>2</sub>D by a

258 normalization factor [the mean value of the 25(OH)D/1,25(OH)<sub>2</sub>D ratio before administration of

259 VitD3 supplements]. We next converted individual values of the normalized

260 25(OH)D/1,25(OH)<sub>2</sub>D ratio to the same units as total 25(OH)D by multiplying by a conversion

261 factor [the mean value of 25(OH)D before administration of VitD3 supplements].

### 262 Statistics

263 A two-sided p-value <0.05 (paired t-test) was taken as the threshold for statistical significance

264 without any correction for multiple comparisons. We pooled all the data before and after VitD3

265 supplementation for graphing total levels of 1,25(OH)<sub>2</sub>D and 24,25(OH)<sub>2</sub>D as a function of total

266 levels of 25(OH)D. Both Pearson and Spearman correlation coefficients were calculated using  
267 software provided in Excel.

268 *Study approval*

269 The Clinical Trial Protocol was approved by the University of Maryland Baltimore Institutional  
270 Review Board (FWA00007145). Written informed consent was obtained from all participants.

## 271 RESULTS

### 272 Interrelationships among 1,25(OH)<sub>2</sub>D, 24,25(OH)<sub>2</sub>D, and 25(OH)D.

273 As reported previously, mean ( $\pm$ SEM) total plasma levels of both 25(OH)D and 24,25(OH)<sub>2</sub>D  
274 increased significantly in response to VitD3 supplementation: from 16.5 $\pm$ 1.6 to 44.3 $\pm$ 5.5 ng/mL  
275 (p=0.0006) for 25(OH)D and from 1.0 $\pm$ 0.1 to 4.3 $\pm$ 0.6 ng/mL (p=0.0002) for 24,25(OH)<sub>2</sub>D (13).  
276 We observed consistent increases in total levels of 25(OH)D and 24,25(OH)<sub>2</sub>D (Figs. 1A and  
277 1B). In contrast, mean total plasma levels of 1,25(OH)<sub>2</sub>D did not change in response to VitD3  
278 supplements (43.8 $\pm$ 3.6 pg/mL versus 44.9 $\pm$ 4.1 pg/mL; p=0.7) (Fig. 1C) (13). This observation  
279 provides strong evidence of the effectiveness of homeostatic mechanisms regulating levels of  
280 1,25(OH)<sub>2</sub>D. Therefore, we conducted exploratory analyses to further investigate physiological  
281 mechanisms mediating this homeostatic regulation.

282 For this analysis, we pooled data on VitD metabolites – including data obtained both before and  
283 after VitD3 supplementation (Fig. 2). Although there was no significant correlation between total  
284 plasma levels of 1,25(OH)<sub>2</sub>D and 25(OH)D (Fig. 2A), total plasma levels of 24,25(OH)<sub>2</sub>D  
285 increased as a function of total plasma 25(OH)D levels (Fig. 2B).

### 286 A critical role for regulation of 24-hydroxylase activity in homeostatic regulation of 1,25(OH)<sub>2</sub>D

287 We considered possible mechanisms that might contribute to the observed sigmoid shape of the  
288 curve relating total 24,25(OH)<sub>2</sub>D levels to total 25(OH)D levels (Fig. 2B). If the 24-hydroxylase  
289 enzyme (CYP24A1) followed simple Michaelis-Menten kinetics, one might have predicted that  
290 the relationship between plasma levels of 24,25(OH)<sub>2</sub>D and 25(OH)D would have been  
291 described by a hyperbola (Fig. 3A, solid curve) rather than a sigmoid curve (Fig. 3A, dashed  
292 curve). The observed sigmoid curve approaches an asymptote at high levels of 25(OH)D – most

293 likely a reflection of the saturability of the 24-hydroxylase enzyme (CYP24A1). What can  
294 explain the relative underproduction of 24,25(OH)<sub>2</sub>D at low levels of 25(OH)D as compared to  
295 what would have been predicted by simple Michaelis-Menten kinetics? As suggested by others  
296 (18, 23, 28), we hypothesized that expression of 24-hydroxylase enzyme is regulated, with low  
297 24-hydroxylase activity occurring when 25(OH)D levels are low and higher 24-hydroxylase  
298 activity when 25(OH)D levels are high. We applied mathematical modeling (see Methods  
299 section) to provide quantitative estimates of the relationship between activity of the 24-  
300 hydroxylase enzyme and 25(OH)D levels (Fig. 3C). Our model suggests that 24-hydroxylase  
301 activity achieves a maximum when 25(OH)D levels exceed 50 ng/mL. In contrast, VitD  
302 deficiency is associated with suppression of 24-hydroxylase activity— achieving a minimum  
303 corresponding to ~90% suppression when 25(OH)D levels are less than 10-20 ng/mL. Our  
304 mathematical model provides estimates of 24-hydroxylase activity as a function of 25(OH)D  
305 levels (Fig. 3C). The data points in Fig. 2A demonstrate substantial “scatter” around the modeled  
306 curve. We hypothesize that the ~3-fold range of inter-individual variation in levels of VitD  
307 binding protein (VDBP) (29) may account for the observed 3.4-fold range of total levels of  
308 1,25(OH)<sub>2</sub>D observed in this study, which in turn could account for the observed scatter for data  
309 points in the plot of total levels of 1,25(OH)<sub>2</sub>D versus total levels of 25(OH)D (Fig. 2A).  
310 Interestingly, the modeled curve predicts that levels of 1,25(OH)<sub>2</sub>D begin to decrease slightly for  
311 levels of 25(OH)D < ~15-20 ng/mL. This “fall-off” may possibly be related to the fact that the  
312 model does not account for development of secondary hyperparathyroidism. If the model  
313 specified that low levels of 25(OH)D would trigger increased secretion of PTH and resultant  
314 increased 1 $\alpha$ -hydroxylation of 25(OH)D, it is likely that the model would predict constant levels  
315 of 1,25(OH)<sub>2</sub>D for lower levels of 25(OH)D.



316 Validating the model using the goodness of fit

317 Equation (1) provides a good fit to the observed data as shown by the graph plotting total levels  
318 of 24,25(OH)<sub>2</sub>D as a function of 25(OH)D (Fig. 2B). Goodness of fit is evidenced by the fact  
319 that the sum of the squared errors (SSE) is small relative to the total sum of the squares about the  
320 mean (SST): SSE/SST = 0.078 (Table 2).

321 Moreover, equation (7) correctly predicts that 1,25(OH)<sub>2</sub>D levels are not correlated with  
322 25(OH)D levels (Fig. 2A). Indeed, the sum of the squared errors (SSE) is approximately equal to  
323 the total sum of the squares about the mean (SST): SSE/SST = 1.04 (Table 2). Furthermore, the  
324 value of the ratio of the sum of the squares due to regression (SSR) divided by SST = 0.094,  
325 suggesting that a horizontal line described by the following equation provides a good fit for the  
326 observed data: 1,25(OH)<sub>2</sub>D = 44.4 pg/mL (i.e., with 44.4 pg/mL being the mean level of  
327 1,25(OH)<sub>2</sub>D).

328 VitD metabolite ratios are better predictive of clinical VitD status

329 As noted in the literature, ratios of VitD metabolites are relatively independent of inter-individual  
330 variation in VDBP levels (24, 30, 31). For example, the following equations demonstrate that the  
331 ratio of [1,25(OH)<sub>2</sub>D]/[24,25(OH)<sub>2</sub>D] is independent of VDBP levels:

332 (8)  $[1,25(OH)_2D]_{total} \approx [1,25(OH)_2D]_{free} \times VDBP_{total} \times K_{1,25}$

333 (9)  $[24,25(OH)_2D]_{total} \approx [24,25(OH)_2D]_{free} \times VDBP_{total} \times K_{24,25}$

334 (10)  $\frac{[1,25(OH)_2D]_{total}}{[24,25(OH)_2D]_{total}} \approx \frac{[1,25(OH)_2D]_{free}}{[24,25(OH)_2D]_{free}} \times \frac{K_{1,25}}{K_{24,25}}$

335 When the  $\frac{[1,25(OH)_2D]_{total}}{[24,25(OH)_2D]_{total}}$  ratio is plotted as a function of total levels of 25(OH)D, this

336 represents a graph of a VDBP-independent variable on the y-axis and a VDBP-dependent

337 variable on the x-axis (Fig. 4A). In contrast, the graph of  $\frac{[1,25(OH)_2D]_{total}}{[24,25(OH)_2D]_{total}}$  as a function of  
338  $\frac{[25(OH)D]_{total}}{[1,25(OH)_2D]_{total}}$  plots VDBP-independent variables on both axes (Figs. 4B). This approach  
339 minimized the contribution of inter-individual variation in VDBP levels, thereby minimizing  
340 “scatter” of points in the graph (Fig. 4B). When  $\frac{[1,25(OH)_2D]_{total}}{[24,25(OH)_2D]_{total}}$  was plotted as a function of  
341  $\frac{[25(OH)D]_{total}}{[1,25(OH)_2D]_{total}}$ , the absolute value of the Spearman correlation coefficient was quite high ( $\rho=-$   
342  $0.94$ ;  $p=10^{-10}$ ) (Fig. 4B). In contrast, the absolute value of the Spearman correlation coefficient  
343 was lower ( $\rho=-0.83$ ;  $p=2.2 \times 10^{-6}$ ) when  $\frac{[1,25(OH)_2D]_{total}}{[24,25(OH)_2D]_{total}}$  was plotted as a function of total levels  
344 of 25(OH)D (Fig. 4A).

#### 345 Modeling VitD Metabolite Ratios

346 Tang et al. (23) proposed that the ratio of 1,25(OH)<sub>2</sub>D/24,25(OH)<sub>2</sub>D provides an improved  
347 assessment of clinical VitD status with a ratio  $\geq 51$  suggesting “VitD deficiency” and a ratio of  
348 35-50 suggesting “VitD insufficiency”. We applied our mathematical model to predict the shape  
349 of the curve expressing Tang’s VitD metabolite ratio (1,25(OH)<sub>2</sub>D/1,24(OH)<sub>2</sub>D) as a function of  
350 total levels of 25(OH)D. Our modeled curve (Fig. 4A) closely resembles the curve included in  
351 the publication by Tang et al. (23). Based on our modeled curve, the cutoffs proposed by Tang et  
352 al. correspond to total 25(OH)D levels of ~17 ng/mL for “VitD deficiency” and ~21 ng/mL for  
353 “VitD insufficiency”.

354 Furthermore, our mathematical model provides a good fit to the observed data as shown by the  
355 graph plotting total levels of 1,25(OH)<sub>2</sub>D/24,25(OH)<sub>2</sub>D as a function of 25(OH)D (Fig. 4A). Two  
356 other VitD metabolite ratios have been proposed in the literature: 1,25(OH)<sub>2</sub>D/25(OH)D (32) and  
357 24,25(OH)<sub>2</sub>D/25(OH)D (24, 30, 31, 33, 34). Our mathematical model predicts that the

358 25(OH)D/1,25(OH)<sub>2</sub>D ratio [i.e., the reciprocal of the 1,25(OH)<sub>2</sub>D/25(OH)D ratio proposed in  
359 the literature (32)] is a near-linear function of 25(OH)D levels (Fig. 5A); the graph of the  
360 24,25(OH)<sub>2</sub>D/25(OH)D ratio versus 25(OH)D is predicted to be a sigmoid curve (Fig. 5B). The  
361 modeled curves for all three VitD metabolite ratios provide good fits to observed data [SSE/SST  
362 ratios of 0.49-0.52 (Table 2)].

### 363 Correlation of relative 24-hydroxylase activity (*h*) with VitD metabolite ratios

364 We pooled our data before and after VitD3 supplementation for each of the three VitD  
365 metabolites. We first investigated the correlation of the calculated relative 24-hydroxylase  
366 activity (*h*) with total 25(OH)D levels, which gave a Spearman correlation coefficient of  $\rho=0.85$   
367 ( $p=7E-07$ ) (Fig. 6A). We then evaluated correlations with three VitD metabolite ratios. As  
368 expected, relative 24-hydroxylase activity (*h*) was perfectly correlated with the  
369 25(OH)D/1,25(OH)<sub>2</sub>D ratio ( $\rho=1$ ) since this ratio was used in our model to account for the effect  
370 of variation in VDBP (Fig. 6B). While 24-hydroxylase activity (*h*) was highly correlated with the  
371 1,25(OH)<sub>2</sub>D/24,25(OH)<sub>2</sub>D ratio ( $\rho^2=0.94$ ;  $p=3E-13$ ) (Fig. 6C), *h* was less well correlated with the  
372 24,25(OH)<sub>2</sub>D/25(OH) ratio ( $\rho^2=0.67$ ;  $p=3E-06$ ) (Fig. 6D).

### 373 Correlation of baseline PTH with baseline indices of VitD status

374 Although baseline PTH levels were correlated with baseline total 25(OH)D levels before VitD3  
375 supplementation ( $R^2=0.08$ ;  $p=5E-05$ ), the variance in 25(OH)D accounted for only 8% of the  
376 variance in PTH. Furthermore, the slope of the regression line was positive whereas the known  
377 physiology predicts that the slope should be negative (Fig. 7A) with PTH levels being higher  
378 when 25(OH)D levels are lower. Moreover, baseline PTH levels were not significantly  
379 correlated with the baseline 1,25(OH)<sub>2</sub>D/24,25(OH)<sub>2</sub>D ratio ( $R^2=0.008$ ;  $p=0.63$ ) (Fig. 7B). Even

380 in participants who had received VitD3 supplementation, we observed a wide range for PTH  
381 levels (29-85 pg/ml) – suggesting that each participant has an individual setpoint for PTH levels.

## 382 DISCUSSION

383 Because of the critical importance of  $\text{Ca}^{+2}$  in many biological processes, the body has evolved  
384 multiple homeostatic mechanisms to maintain free serum  $\text{Ca}^{+2}$  levels within a narrow  
385 physiological range. Since VitD plays a critical role in mediating intestinal absorption of dietary  
386  $\text{Ca}^{+2}$ , homeostatic mechanisms also maintain free  $1,25(\text{OH})_2\text{D}$  within narrow physiological  
387 ranges. To maintain stable levels of  $1,25(\text{OH})_2\text{D}$  when VitD availability is scarce, the body has  
388 two defense mechanisms: (1) to increase production of  $1,25(\text{OH})_2\text{D}$  by increasing PTH-induced  
389  $1\alpha$ -hydroxylation of  $25(\text{OH})\text{D}$  (12, 16, 17) and/or (2) to decrease the metabolic clearance of  
390  $1,25(\text{OH})_2\text{D}$  by suppressing 24-hydroxylase – the enzyme which degrades  $1,25(\text{OH})_2\text{D}$  and  
391  $25(\text{OH})\text{D}$  (14, 15). However, as noted in The Endocrine Society’s clinical practice guidelines,  
392 VitD deficiency-induced secondary hyperparathyroidism is associated with adverse effects on  
393 bone health: VitD-induced secondary hyperparathyroidism has an adverse impact on bone health  
394 by increasing “*osteoclastic activity thereby creating local foci of bone weakness, which causes a*  
395 *generalized decrease in bone mineral density, resulting in osteopenia and osteoporosis*” (17).

### 396 Two lines of defense to maintain physiological levels of $1,25(\text{OH})_2\text{D}$

397 Based on our study’s inclusion criteria, all research participants met The Endocrine Society’s  
398 criterion for VitD deficiency [i.e., screening  $25(\text{OH})\text{D} \leq 20 \text{ ng/mL}$ ]. While total  $25(\text{OH})\text{D}$  and  
399  $24,25(\text{OH})_2\text{D}$  levels were increased significantly by VitD3 supplementation, total  $1,25(\text{OH})_2\text{D}$   
400 did not change. Moreover, levels of PTH were within normal limits at baseline and did not  
401 change when supplements were administered to correct the VitD deficiency. These data are  
402 consistent with published evidence suggesting that mild-moderate VitD deficiency may not  
403 trigger secondary hyperparathyroidism while secondary hyperparathyroidism is a characteristic  
404 feature of severe VitD deficiency [ $25(\text{OH})\text{D} < 10\text{-}12 \text{ ng/mL}$ ] (35-37).

405 The published literature contains many graphs displaying PTH levels as a function of total  
406 25(OH)D (35, 38-41). In general, these graphs depict an increase in mean PTH levels as  
407 25(OH)D levels decrease with an inflection point at total 25(OH)D levels in the range between  
408 20-30 ng/mL (37). However, individual data points scatter widely above and below the mean  
409 values for PTH. If one focuses on mean data, one might conclude that all individuals are  
410 gradually becoming increasingly hyperparathyroid as total 25(OH)D decreases. However,  
411 detailed analysis of the data suggests an alternative interpretation. If one examines data points  
412 corresponding to total 25(OH)D levels in the range of 10-20 ng/mL, the vast majority of  
413 individual data points span the same wide range of PTH levels even as total 25(OH)D levels  
414 decrease (see for example Figs 2 and 3 from Mendes et al. (38)). However, the number of  
415 outliers (i.e., elevated PTH levels) begins to increase as total 25(OH)D levels decrease below  
416 ~20 ng/mL. We interpret this observation as suggesting that there is considerable inter-individual  
417 variation in the setpoint for developing secondary hyperparathyroidism. When total 25(OH)D  
418 levels fall below ~10 ng/mL, there is a substantial increase in both the mean level of PTH and  
419 the percentage of individuals with secondary hyperparathyroidism. We hypothesize that inter-  
420 individual variation in VDBP levels may be an important contributor. Individuals with high  
421 VDBP levels are predicted to have lower free 25(OH)D levels at any given level of total  
422 25(OH)D. Thus, such individuals with high VDBP levels would be predicted to develop  
423 secondary hyperparathyroidism at higher levels of total 25(OH)D. Accordingly, we hypothesize  
424 that VDBP-independent indices of VitD status would better predict development of secondary  
425 hyperparathyroidism. Tang et al. (23) provided data suggesting that the  
426  $1,25(\text{OH})_2\text{D}/24,25(\text{OH})_2\text{D}$  ratio  $>100$  is associated with an increased risk of elevated PTH level.  
427 Our data are consistent with the hypothesis that the  $1,25(\text{OH})_2\text{D}/24,25(\text{OH})_2\text{D}$  ratio may be

428 better correlated with secondary hyperparathyroidism as compared to other indices of VitD status  
429 such as the total 25(OH)D level.

430 The absence of secondary hyperparathyroidism in our participants with total 25(OH)D in the  
431 range between 11 to 19 ng/mL inspired us to investigate what other homeostatic mechanisms  
432 maintained 1,25(OH)<sub>2</sub>D in the normal range. Analysis of our data demonstrated that the  
433 correlation between 25(OH)D and 24,25(OH)<sub>2</sub>D levels was defined by a sigmoid curve rather  
434 than a hyperbola. Based on this observation, we hypothesized that 24-hydroxylase expression is  
435 regulated, and we designed a mathematical model to test our hypothesis. Our model  
436 demonstrates that 24-hydroxylase activity achieves a minimum (~90% suppression) when  
437 25(OH)D levels <10-20 ng/mL. Thus, in mild-moderate VitD deficiency, the body suppresses 24-  
438 hydroxylation to preserve 1,25(OH)<sub>2</sub>D from degradation and this mechanism provides the first  
439 line of defense against VitD deficiency. Interestingly, viewed from a different perspective, high  
440 levels of 25(OH)D are associated with increased 24-hydroxylase activity, which provides a major  
441 defense against VitD toxicity (26, 27). In the absence of secondary hyperparathyroidism, it is  
442 possible that mild-moderate VitD deficiency may not represent an absolute requirement for  
443 treatment with VitD supplements if the treatment objective is to promote bone health. On the  
444 other hand, recent publications have suggested that 24,25(OH)<sub>2</sub>D exerts a direct effect to  
445 promote healing of bone fractures (42-44). In other words, whether or not VitD deficiency  
446 increases the risk of bone fracture (45, 46), it has been proposed that adequate levels of  
447 24,25(OH)<sub>2</sub>D may promote healing of bone fractures.

448 Considerable controversy exists with respect to the overall health impact of VitD status and VitD  
449 supplementation in the general population (45-48). Published literature demonstrates that severe  
450 VitD deficiency triggers secondary hyperparathyroidism, which in turn induces 1 $\alpha$ -hydroxylation

451 – thereby increasing the rate of 1,25(OH)<sub>2</sub>D biosynthesis (16, 35). Because secondary  
452 hyperparathyroidism is not triggered unless VitD deficiency becomes severe [e.g., 25(OH)D  
453 <10-12 ng/mL] or if 1 $\alpha$ -hydroxylation is impaired as in chronic kidney disease, this mechanism  
454 provides the second line of defense against VitD deficiency. Secondary hyperparathyroidism is  
455 associated with adverse effects on bone health. This provides a strong rationale for treatment  
456 with VitD supplements. We propose two diagnostic terms to reflect clinical differences between  
457 these two scenarios. “Sub-clinical VitD deficiency” describes a clinical condition when only the  
458 first line of defense (suppression of 24-hydroxylase) has been triggered. In this manuscript, we  
459 have used the term “mild-moderate” VitD deficiency as a synonym for the concept of sub-  
460 clinical VitD deficiency (i.e., suppression of 24-hydroxylase in the absence of secondary  
461 hyperparathyroidism). “Overt VitD deficiency” describes a clinical condition when both lines of  
462 defense are triggered (i.e., suppression of 24-hydroxylase plus secondary hyperparathyroidism).  
463 This is consistent with conclusions of a scientific workshop sponsored by the National Kidney  
464 Foundation in 2018, which suggested that in patients with chronic kidney disease, 25(OH)D  
465 levels of <15 ng/mL require VitD treatment and in the range of 15-20 ng/mL, require treatment  
466 only if there is evidence of secondary hyperparathyroidism (22).

467 Which molecular mechanism(s) mediate homeostatic regulation of 24-hydroxylase activity?  
468 Expression of the *CYP24A1* gene (the gene encoding 24-hydroxylase enzyme) is reported to be  
469 increased by 1,25(OH)<sub>2</sub>D and FGF23 but decreased by PTH (49). However, mean levels of total  
470 1,25(OH)<sub>2</sub>D, FGF23, and PTH did not change in response to VitD3 supplementation in our  
471 clinical trial (13). Taken at face value, these observations suggest that regulation of 24-  
472 hydroxylase activity may be mediated by factors other than levels of 1,25(OH)<sub>2</sub>D, FGF23, or  
473 PTH. Nevertheless, it remains possible that regulation of 24-hydroxylase activity is sensitive to



474 extremely small changes in levels of 1,25(OH)<sub>2</sub>D, FGF23, or PTH, which were not captured in  
475 our study. Furthermore, all three hormones exhibit circadian variation (50-52). Since we obtained  
476 blood samples at only one time of day, we cannot exclude the possibility that the relevant  
477 biomarker(s) might require measurements of circulating levels integrated over a 24-hour period.  
478 In any case, additional research will be required to answer this interesting question.

479 *Implications for clinical diagnosis of VitD deficiency*

480 Although the Endocrine Society's clinical practice guidelines recommend a "one-size-fits-all"  
481 approach based on measurements of total levels of 25(OH)D (17), this approach does not  
482 account for the substantial inter-individual variation in levels of VDBP that limits the  
483 applicability of a one-size-fits-all approach. Whereas the usual clinical assays primarily reflect  
484 protein-bound levels of VitD metabolites, it is the free levels (i.e., not bound to protein) that are  
485 biologically relevant (53). This provides a strong rationale for a *precision diagnostics* approach  
486 wherein diagnostic criteria for VitD deficiency are adjusted for each individual based on that  
487 person's circulating level of VDBP. Other factors may also be relevant: for example, individual  
488 setpoints for PTH secretion and an individual's sensitivity to biological actions of PTH (54).  
489 These considerations raise challenging questions about how best to implement a precision  
490 diagnostics approach to diagnose VitD deficiency and secondary hyperparathyroidism. Others  
491 have suggested the potential value of using a tailored approach to assess VitD status and to guide  
492 decisions about the need for VitD supplementation (55). In clinical endocrinology practice,  
493 deficiency states are frequently diagnosed by documenting the activation of compensatory  
494 homeostatic mechanisms. For example, hypothyroidism is diagnosed by documenting elevated  
495 levels of TSH. Conversely, hyperthyroidism is diagnosed by documenting suppression of TSH  
496 levels (20). By basing diagnoses on whether the body's homeostatic responses have been

497 triggered, physicians implicitly rely on Cannon’s concept of the “*wisdom of the body*” to  
498 diagnose hormonal status. Following these precedents, one might base the diagnosis of VitD  
499 deficiency on documenting the activation of the relevant homeostatic mechanisms – e.g.,  
500 suppression of 24-hydroxylase activity. However, it is challenging to base the diagnosis solely on  
501 measuring total 24,25(OH)<sub>2</sub>D levels because of the confounding influence of inter-individual  
502 variation in VDBP levels. The observed threefold inter-individual variation in levels of VDBP  
503 (29) is predicted to cause a three-fold inter-individual variation in total levels of 24,25(OH)<sub>2</sub>D  
504 even in individuals with identical levels of free 24,25(OH)<sub>2</sub>D. Fortunately, VitD metabolite ratios  
505 are known to be independent of VDBP levels (24). Tang et al. (23) have advocated the use of the  
506 1,25(OH)<sub>2</sub>D/24,25(OH)<sub>2</sub>D ratio for this purpose. As confirmed by our mathematical model (Fig.  
507 4A), VitD deficiency is associated with a dramatic increase in the 1,25(OH)<sub>2</sub>D/24,25(OH)<sub>2</sub>D  
508 ratio as a consequence of the marked suppression of 24-hydroxylase activity induced by VitD  
509 deficiency. By providing an index of the level of 24-hydroxylase activity, the  
510 1,25(OH)<sub>2</sub>D/24,25(OH)<sub>2</sub>D ratio provides a highly sensitive index of clinical VitD status.  
511 Furthermore, because of the extremely high correlation between the 1,25(OH)<sub>2</sub>D/24,25(OH)<sub>2</sub>D  
512 ratio and the 25(OH)D/1,25(OH)<sub>2</sub>D ratio (Fig. 4B), it seems likely that the  
513 25(OH)D/1,25(OH)<sub>2</sub>D ratio might also provide a useful clinical assessment of VitD status. This  
514 latter ratio is based on two widely available assays [25(OH)D and 1,25(OH)<sub>2</sub>D] whereas the  
515 1,25(OH)<sub>2</sub>D/24,25(OH)<sub>2</sub>D ratio requires an assay for 24,25(OH)<sub>2</sub>D, which is currently less  
516 widely available and more expensive. Different VitD metabolite ratios have been suggested for  
517 assessment of VitD status and some studies have investigated their predictive value for hard  
518 clinical endpoints e.g., risk of bone fracture (31, 33). The 24,25(OH)<sub>2</sub>D/25(OH)D ratio has  
519 gained attention as a clinically informative substitute for total plasma 25(OH)D for assessment of

520 VitD status. Furthermore, the scientific workshop sponsored by the National Kidney Foundation  
521 proposed that the 24,25(OH)<sub>2</sub>D/25(OH)D ratio might be particularly useful in patients with CKD  
522 as a surrogate for activity of 24-hydroxylase, as in this patient population 1 $\alpha$ -hydroxylation of  
523 25(OH)D is impaired (22). However, our data suggest that the 1,25(OH)<sub>2</sub>D/24,25(OH)<sub>2</sub>D ratio  
524 may have superior predictive value as compared to the 24,25(OH)<sub>2</sub>D/25(OH)D ratio.

### 525 Interindividual variation in PTH levels

526 Even in VitD-replete participants being treated with VitD<sub>3</sub> supplements, we observed a wide  
527 range of PTH levels (29-85pg/mL). Furthermore, mean levels of PTH were not significantly  
528 affected by administration of VitD<sub>3</sub> supplements in our study (47.5 $\pm$ 4.8 pg/mL before and  
529 48.4 $\pm$ 5.1 pg/mL after VitD<sub>3</sub> supplementation). As suggested by others (56), interindividual  
530 variation in PTH levels may reflect variation in the setpoint for PTH secretion. Variation in  
531 dietary calcium intake may also affect PTH levels (57). These considerations create major  
532 challenges in how to interpret an individual measurement of PTH. We, therefore, assessed the  
533 response of PTH to VitD<sub>3</sub> supplementation as an indication of whether a participant exhibited  
534 secondary hyperparathyroidism due to VitD deficiency. While one participant exhibited a ~34%  
535 decrease in PTH level in response to VitD<sub>3</sub> supplementation, the other participants did not  
536 exhibit significant suppression of PTH levels in response to VitD<sub>3</sub> supplementation. Consistent  
537 with the conclusions of Tang et al. (23), this patient with secondary hyperparathyroidism  
538 exhibited the highest value of the 1,25(OH)<sub>2</sub>D/24,25(OH)<sub>2</sub>D ratio (110 pg/ng) observed in our  
539 study. Furthermore, the 1,25(OH)<sub>2</sub>D/24,25(OH)<sub>2</sub>D ratio was highly correlated ( $\rho^2=-0.94$ ;  $p=3E-$   
540 13) with relative 24-hydroxylase activity as calculated by our mathematical model – accounting  
541 for 94% of the variance in relative 24-hydroxylase activity. Other indices were less well  
542 correlated: 24,25(OH)<sub>2</sub>D/25(OH)D ( $\rho^2=0.67$ ;  $p=3E-06$ ) and total 25(OH)D ( $\rho^2=0.72$ ;  $p=7E-07$ ).

543 Study design: strengths and limitations

544 The study was designed as a crossover study to enable paired statistical analyses comparing data  
545 obtained before versus after administration of VitD3 supplements. To minimize the impact of  
546 circadian rhythms for plasma 1,25(OH)<sub>2</sub>D, PTH, and FGF23 (50-52), all blood samples were  
547 obtained at the same time of day (~7:00 am). Using LC-MS/MS-based assays of VitD  
548 metabolites (Quest Diagnostics and Heartland Assays), we did not detect metabolites of VitD2 in  
549 any of our participants. The absence of VitD2 metabolites simplified data interpretation by  
550 avoiding potential issues related to differences between VitD2 and VitD3 (58). Data on levels of  
551 25(OH)D and 24,25(OH)<sub>2</sub>D were provided by Heartland Assays – a company that specializes in  
552 applying liquid chromatography and mass spectroscopy (LC-MS/MS) to conduct scientifically  
553 rigorous and reproducible assays of VitD metabolites. Our novel mathematical model provided  
554 quantitative estimates of *in vivo* 24-hydroxylase activity and represents another strength of the  
555 study. Furthermore, while previous publications provide data on one or another ratio of VitD  
556 metabolites (22, 24, 30, 31), our analysis compares the predictive value of three VitD metabolite  
557 ratios: 1,25(OH)<sub>2</sub>D/24,25(OH)<sub>2</sub>D; 25(OH)D/1,25(OH)<sub>2</sub>D; and 24,25(OH)<sub>2</sub>D/25(OH)D.

558 In addition to these strengths of our study design, the study had important limitations. Although  
559 our original study design proposed to study 25 participants, the impact of the COVID-19  
560 pandemic necessitated a decrease in the sample size to 11 participants. Limitations associated  
561 with the relatively small sample size are partially mitigated by our efforts to assure scientific  
562 rigor and reproducibility of the primary data – e.g., the enhanced statistical power provided by  
563 conducting paired statistical comparisons. Accordingly, many of our analyses [e.g., VitD-induced  
564 changes in 25(OH)D and 24,25(OH)<sub>2</sub>D] demonstrated high levels of statistical significance.  
565 Other analyses [e.g., comparisons for 1,25(OH)<sub>2</sub>D and PTH] demonstrated essentially identical

566 mean values before and after VitD3 supplementation. Based on clinical guidelines of The  
567 Endocrine Society, all of our participants exhibited some degree of VitD deficiency. However,  
568 only one participant exhibited more severe VitD deficiency accompanied by secondary  
569 hyperparathyroidism. Additional research will be required to better understand VitD homeostatic  
570 mechanisms in patients with severe VitD deficiency.

571 We followed The Endocrine Society's clinical guidelines recommending a loading dose of VitD3  
572 (i.e., 50,000 IU/week for 4 weeks) with a modification by increasing the dose in patient with  
573 BMI  $\geq 30$  kg/m<sup>2</sup>). Some authorities have raised questions about the impact of high dose boluses  
574 of VitD that transiently raise VitD concentrations to supraphysiological levels (59). However, we  
575 minimized this concern by maintaining participants on maintenance doses of VitD3 (1000-2000  
576 IU/day depending on BMI) for a minimum of six weeks. This allowed for a re-equilibration to a  
577 more physiological level of VitD.

578 Finally, this study was designed as an outpatient study with participants free to eat *ad libitum*.  
579 Day-to-day variation in dietary intake of calcium and phosphate may have increased variation in  
580 measurements of various endpoints – e.g., PTH or FGF23. Furthermore, since our study design  
581 did not include data on dietary intake, our analysis could not investigate dietary factors as  
582 covariates. We have offered some tentative hypotheses related to the necessity of VitD  
583 supplements in overt VitD deficiency as compared to the possible optional nature of VitD  
584 supplements in sub-clinical VitD deficiency. However, we acknowledge that the present study  
585 does not provide sufficient data to draw rigorous evidence-based conclusions with respect to  
586 treatment recommendations. Our small pilot study is based on biomarker data rather than hard  
587 clinical outcomes. Future research will be required to address these important clinical questions.

588 Nevertheless, we believe it is valuable to offer hypotheses based on implications derived from  
589 underlying physiology and pathophysiology.

590 **Acknowledgements**

591 The authors gratefully acknowledge research funding provided by NIDDK and the NIH Office of  
592 Dietary Supplements: R01DK118942, R01DK118942-02S1, and T32DK098107. We are also  
593 grateful to the staff at University of Maryland's Amish Research Clinic and to the members of the  
594 Old Order Amish Community in Lancaster, PA who participated in this clinical trial.

595 **Data Availability**

596 Primary data will be made available upon request to qualified academic investigators for research  
597 purposes under a Data Transfer Agreement to protect research participants' confidential  
598 information.

599 **Table 1. Parameters of the mathematical model.**

<b>Model parameters</b>	<b>Definitions</b>
<b><math>\alpha</math></b>	A model parameter to facilitate fitting the equation to the observed data
<b><math>h</math></b>	Relative 24-hydroxylase activity
<b><math>K1</math></b>	Michaelis-Menten constant for 1 $\alpha$ -hydroxylase with 25(OH)D as substrate
<b><math>K_{24}</math></b>	Michaelis-Menten constant for 24-hydroxylase enzyme with 25(OH)D as substrate (to fit hyperbolic curve)
<b><math>L_{1,25}</math></b>	Analog of Michaelis-Menten constant for 24-hydroxylase enzyme with 1,25(OH) <sub>2</sub> D as substrate (to fit sigmoid curve)
<b><math>L_{24}</math></b>	Analog of Michaelis-Menten constant for 24-hydroxylase enzyme with 25(OH)D as substrate (to fit sigmoid curve)
<b><math>m(1,25)</math></b>	First order rate constant for metabolic clearance of 1,25(OH) <sub>2</sub> D
<b><math>m(24,25)</math></b>	First order rate constant for metabolic clearance of 24,25(OH) <sub>2</sub> D
<b><math>S(1,25)</math></b>	1,25(OH) <sub>2</sub> D concentration
<b><math>S(24,25)</math></b>	24,25(OH) <sub>2</sub> D concentration
<b><math>S(25)</math></b>	25(OH)D concentration
<b><math>V1</math></b>	Maximal velocity for 1 $\alpha$ -hydroxylase with 25(OH)D as substrate
<b><math>V_{24}</math></b>	Maximal velocity for 24-hydroxylase with 25(OH)D as substrate (to fit hyperbolic curve)
<b><math>W_{1,25}</math></b>	Maximal velocity for 24-hydroxylase with 1,25(OH) <sub>2</sub> D as substrate (to fit sigmoid curve)
<b><math>W_{24}</math></b>	Maximal velocity for 24-hydroxylase with 25(OH)D as substrate (to fit sigmoid curve)

600



601 **Table 2. Goodness of fit for mathematical model equations.** The Table includes metrics for the  
 602 goodness of fit for the modeling equations for 1,25(OH)<sub>2</sub>D (Fig. 2A) and 24,25(OH)<sub>2</sub>D (Fig. 2B)  
 603 as well as the goodness of fit for modeling of three VitD metabolite ratios (Figs. 4A, 5A, and  
 604 5B).

	24,25(OH)D	1,25(OH) <sub>2</sub> D	1,25(OH) <sub>2</sub> D/ 24,25(OH) <sub>2</sub> D	25(OH)D/ 1,25(OH) <sub>2</sub> D	24,25(OH) <sub>2</sub> D/ 25(OH)D
Sum of squares due to regression (SSR) <sup>a</sup>	113	315	809	3.37	0.150
Total sum of squares about mean (SST) <sup>b</sup>	105	3341	849	3.22	0.151
Sum of squared errors (SSE) <sup>c</sup>	8.2	3483	412	1.66	0.079
Ratio of SSE/SST	0.078	1.04	0.49	0.52	0.52
Ratio of SSR/SST	1.08	0.094	0.95	1.05	0.995

605 <sup>a</sup>  $SSR = \sum(\hat{x}_i - \bar{x})^2$

606 <sup>b</sup>  $SST = \sum(x_i - \bar{x})^2$

607 <sup>c</sup>  $SSE = \sum(x_i - \hat{x}_i)^2$

608 Where  $x_i$  represents individual observed total levels of VitD metabolites,  $\hat{x}_i$  represents individual  
 609 predicted total levels of VitD metabolites, and  $\bar{x}$  represents the mean of observed total levels of  
 610 VitD metabolites.

611 **FIGURE LEGENDS**

612 **Figure 1. Impact of VitD3 supplementation on total levels of VitD metabolites.** Healthy  
613 participants (N=11) were recruited based on meeting the Endocrine Society's criterion of VitD  
614 deficiency [ $25(\text{OH})\text{D} \leq 20$  ng/mL]. Total levels of VitD metabolites were assayed before and after  
615 participants received VitD3 supplements (13):  $25(\text{OH})\text{D}$  (panel A),  $24,25(\text{OH})_2\text{D}$  (panel B), and  
616  $1,25(\text{OH})_2\text{D}$  (panel C). Data are presented as means  $\pm$  SEM; p-values were calculated using a  
617 two-tailed t-test for paired data.

618

619 **Figure 2. Total levels of  $1,25(\text{OH})_2\text{D}$  and  $24,25(\text{OH})_2\text{D}$  as a function of total levels of**  
620  **$25(\text{OH})\text{D}$ .** Panels A and B present pooled data for individual participants when they were VitD  
621 deficient (gray circles) and after they received VitD3 supplements (black circles).  $1,25(\text{OH})_2\text{D}$   
622 (panel A) and  $24,25(\text{OH})_2\text{D}$  (panel B) are plotted as a function of total levels of  $25(\text{OH})\text{D}$ . The  
623 text box in panel B presents the Spearman correlation coefficient ( $\rho$ ). The curves represent the  
624 equations derived from our mathematical model: equation (1) in Panel A and equation (7) in  
625 Panel B. Values of parameters for Equation (1):  $W_{24}=8$  ng/mL;  $L_{24}=40$  ng/mL; and  $\alpha=0.1$ . Values  
626 for parameters for Equation (7):  $W_{1,25}=40$  ng/mL;  $L_{1,25}=60$  ng/mL;  $V_1=40$ ;  $K=60$  ng/mL;  $\alpha=0.1$ ;  
627 and  $m_{1,25}=1$ .

628

629 **Figure 3. Assumptions underlying mathematical model: regulation of 24-hydroxylase**  
630 **activity in response to clinical VitD status.** Panel A depicts curves corresponding to equations  
631 (1) and (2) [sigmoid and hyperbola, respectively]. Panel B depicts a family of hyperbolas  
632 [equation (2)] corresponding to varying degrees of induction from 10-100% of maximal

633 induction of 24-hydroxylase activity. Panel C depicts equation (3), which is the fractional  
634 induction of 24-hydroxylase activity relative to the maximal level of induction as a function of  
635 25(OH)D. Values of parameters for Equation (1):  $W_{24}=8$  ng/mL;  $L_{24}=40$  ng/mL; and  $\alpha=.0.1$ .  
636 Values for parameters for Equation (2):  $V_{24}=10$  and  $K_{24}=20$  ng/mL. Values of parameters for  
637 Equation (3)  $m(24,25)=1$ ; other parameters the same as for Equations (1) and (2).

638

639 **Figure 4. The 1,25(OH)<sub>2</sub>D/24,25(OH)<sub>2</sub>D and 25(OH)D/1,25(OH)<sub>2</sub>D ratios reflect clinical**  
640 **VitD status.** The graphs summarize data from individual participants when they were VitD  
641 deficient (gray circles) and after they received VitD3 supplements (black circles). Panel A depicts  
642 the 1,25(OH)<sub>2</sub>D/24,25(OH)<sub>2</sub>D ratio as a function of total 25(OH)D. The modeled curve was  
643 calculated as the ratio of modeled values for 1,25(OH)<sub>2</sub>D [equation (7)] divided by modeled  
644 values of 24,25(OH)<sub>2</sub>D [equation (1)]. Panel B depicts 1,25(OH)<sub>2</sub>D/24,25(OH)<sub>2</sub>D ratio as a  
645 function of 25(OH)D/1,25(OH)<sub>2</sub>D ratio. The fitted curves were calculated by GraphPad Prism  
646 software. Text boxes indicate Spearman correlation coefficients and p-values for the correlations.

647

648 **Figure 5. VitD metabolite ratios [25(OH)D/1,25(OH)<sub>2</sub>D and 24,25(OH)<sub>2</sub>D/25(OH)D] as a**  
649 **function of the total levels of 25(OH)D.** The graphs summarize data from individual  
650 participants when they were VitD deficient (gray circles) and after they received VitD3  
651 supplements (black circles). Panel A depicts the 25(OH)D/1,25(OH)<sub>2</sub>D ratio as a function of total  
652 25(OH)D. The modeled curve was calculated as a linear regression using GraphPad Prism  
653 software. Panel B depicts 24,25(OH)<sub>2</sub>D/25(OH)D ratio as a function of 25(OH)D. The modeled

654 curve was calculated as modeled values for 24,25(OH)<sub>2</sub>D [equation (1)] divided by assumed  
655 values of 25(OH)D.

656

657 **Figure 6. Correlation between relative 24-hydroxylase activity (*h*) and indices of VitD**

658 **status.** Panels A-D present pooled data when participants were VitD deficient (gray circles) and  
659 after they received VitD3 supplementation (black circles). The text boxes below the panels  
660 present two Spearman correlation coefficients and two p-values. The first bullet points  
661 correspond to the correlation between 24-hydroxylase and each of the VitD status indices at  
662 baseline before participants received VitD3 supplementation. The second bullet points  
663 correspond to the correlation between 24-hydroxylase and each of the VitD status indices based  
664 on the pooled data (both before and after VitD3 supplementation). The curves in the graphs were  
665 based on modeling of the pooled data.

666

667 **Figure 7. Correlation between PTH and different indices of VitD status.** Panels A and B

668 depict correlations of baseline PTH levels with baseline total 25(OH)D (panel A) or baseline  
669 1,25(OH)<sub>2</sub>D/24,25(OH)<sub>2</sub>D ratio (panel B) before participants received VitD3 supplementation.  
670 One participant (designated by the gray square symbol) exhibited secondary  
671 hyperparathyroidism at baseline as evidenced by a 33% decrease in PTH levels in response to  
672 VitD3 supplementation. There was no statistically significant change in mean PTH levels in  
673 response to VitD3 supplementation (13). Interestingly, the participant with secondary  
674 hyperparathyroidism exhibited the highest baseline 1,25(OH)<sub>2</sub>D/24,25(OH)<sub>2</sub>D ratio among all  
675 the participants in our study (gray square in panel B).

676   **REFERENCES**

677

- 678   1.     Christakos S, Dhawan P, Porta A, Mady LJ, and Seth T. Vitamin D and intestinal calcium  
679     absorption. *Mol Cell Endocrinol*. 2011;347(1-2):25-9.
- 680   2.     Fleet JC. Vitamin D-Mediated Regulation of Intestinal Calcium Absorption. *Nutrients*.  
681     2022;14(16).
- 682   3.     Christakos S, Li S, De La Cruz J, Shroyer NF, Criss ZK, Verzi MP, et al. Vitamin D and  
683     the intestine: Review and update. *J Steroid Biochem Mol Biol*. 2020;196:105501.
- 684   4.     Fleet JC. The role of vitamin D in the endocrinology controlling calcium homeostasis.  
685     *Mol Cell Endocrinol*. 2017;453:36-45.
- 686   5.     Chick HD, E.G.; Hume, M.; Mackay, H.M.M.; Smith, H.H.; Wimberger, H. The  
687     aetiology of rickets in infants: Prophylactic and curative observations at the Vienna  
688     University Kinderklinik. *The Lancet*. 1922:7-11.
- 689   6.     Rajakumar K. Vitamin D, cod-liver oil, sunlight, and rickets: a historical perspective.  
690     *Pediatrics*. 2003;112(2):e132-5.
- 691   7.     Miller WL, and Imel EA. Rickets, Vitamin D, and Ca/P Metabolism. *Horm Res Paediatr*.  
692     2022;95(6):579-92.
- 693   8.     Bikle DD. In: Feingold KR, Anawalt B, Blackman MR, Boyce A, Chrousos G, Corpas E,  
694     et al. eds. *Endotext*. South Dartmouth (MA): MDText.com, Inc. Copyright © 2000-2023,  
695     MDText.com, Inc.; 2000.
- 696   9.     Cannon WB. *The wisdom of the body*. Norton and Company Limited, W. W.; 1963.
- 697   10.    Davies KJ. Adaptive homeostasis. *Mol Aspects Med*. 2016;49:1-7.

- 698 11. Holick MF. Vitamin D status: measurement, interpretation, and clinical application. *Ann*  
699 *Epidemiol.* 2009;19(2):73-8.
- 700 12. Young K, Beggs MR, Grimbley C, and Alexander RT. Regulation of 1 and 24  
701 hydroxylation of vitamin D metabolites in the proximal tubule. *Exp Biol Med*  
702 *(Maywood)*. 2022;247(13):1103-11.
- 703 13. Shahidzadeh Yazdi Z, Streeten EA, Whitlatch HB, Montasser ME, Beitelshes AL, and  
704 Taylor SI. Vitamin D deficiency increases vulnerability to canagliflozin-induced adverse  
705 effects on 1,25-dihydroxyvitamin D and PTH. *J Clin Endocrinol Metab.* 2023.
- 706 14. Jones G, Strugnell SA, and DeLuca HF. Current understanding of the molecular actions  
707 of vitamin D. *Physiol Rev.* 1998;78(4):1193-231.
- 708 15. Jones G, Prosser DE, and Kaufmann M. 25-Hydroxyvitamin D-24-hydroxylase  
709 (CYP24A1): its important role in the degradation of vitamin D. *Arch Biochem Biophys.*  
710 2012;523(1):9-18.
- 711 16. Brenza HL, Kimmel-Jehan C, Jehan F, Shinki T, Wakino S, Anazawa H, et al. Parathyroid  
712 hormone activation of the 25-hydroxyvitamin D3-1alpha-hydroxylase gene promoter.  
713 *Proc Natl Acad Sci U S A.* 1998;95(4):1387-91.
- 714 17. Holick MF, Binkley NC, Bischoff-Ferrari HA, Gordon CM, Hanley DA, Heaney RP, et  
715 al. Evaluation, treatment, and prevention of vitamin D deficiency: an Endocrine Society  
716 clinical practice guideline. *J Clin Endocrinol Metab.* 2011;96(7):1911-30.
- 717 18. Tanaka Y, and DeLuca HF. Stimulation of 24,25-dihydroxyvitamin D3 production by  
718 1,25-dihydroxyvitamin D3. *Science.* 1974;183(130):1198-200.

- 719 19. Tahaka Y, Lorenc RS, and DeLuca HF. The role of 1,25-dihydroxyvitamin D3 and  
720 parathyroid hormone in the regulation of chick renal 25-hydroxyvitamin D3-24-  
721 hydroxylase. *Arch Biochem Biophys*. 1975;171(2):521-6.
- 722 20. Ladenson PW. Diseases of the thyroid gland. *Clin Endocrinol Metab*. 1985;14(1):145-73.
- 723 21. Raff H, and Carroll T. Cushing's syndrome: from physiological principles to diagnosis  
724 and clinical care. *J Physiol*. 2015;593(3):493-506.
- 725 22. Melamed ML, Chonchol M, Gutiérrez OM, Kalantar-Zadeh K, Kendrick J, Norris K, et  
726 al. The Role of Vitamin D in CKD Stages 3 to 4: Report of a Scientific Workshop  
727 Sponsored by the National Kidney Foundation. *Am J Kidney Dis*. 2018;72(6):834-45.
- 728 23. Tang JCY, Jackson S, Walsh NP, Greeves J, and Fraser WD. The dynamic relationships  
729 between the active and catabolic vitamin D metabolites, their ratios, and associations with  
730 PTH. *Sci Rep*. 2019;9(1):6974.
- 731 24. Ginsberg C, Hoofnagle AN, Katz R, Becker JO, Kritchevsky SB, Shlipak MG, et al. The  
732 Vitamin D Metabolite Ratio Is Independent of Vitamin D Binding Protein Concentration.  
733 *Clin Chem*. 2021;67(2):385-93.
- 734 25. Biancuzzo RM, Clarke N, Reitz RE, Travison TG, and Holick MF. Serum concentrations  
735 of 1,25-dihydroxyvitamin D2 and 1,25-dihydroxyvitamin D3 in response to vitamin D2  
736 and vitamin D3 supplementation. *J Clin Endocrinol Metab*. 2013;98(3):973-9.
- 737 26. Schlingmann KP, Kaufmann M, Weber S, Irwin A, Goos C, John U, et al. Mutations in  
738 CYP24A1 and idiopathic infantile hypercalcemia. *N Engl J Med*. 2011;365(5):410-21.
- 739 27. Streeten EA, Zarbalian K, and Damcott CM. CYP24A1 mutations in idiopathic infantile  
740 hypercalcemia. *N Engl J Med*. 2011;365(18):1741-2; author reply 2-3.

- 741 28. Batacchi Z, Robinson-Cohen C, Hoofnagle AN, Isakova T, Kestenbaum B, Martin KJ, et  
742 al. Effects of Vitamin D(2) Supplementation on Vitamin D(3) Metabolism in Health and  
743 CKD. *Clin J Am Soc Nephrol*. 2017;12(9):1498-506.
- 744 29. Robinson-Cohen C, Zelnick LR, Hoofnagle AN, Lutsey PL, Burke G, Michos ED, et al.  
745 Associations of Vitamin D-Binding Globulin and Bioavailable Vitamin D Concentrations  
746 With Coronary Heart Disease Events: The Multi-Ethnic Study of Atherosclerosis  
747 (MESA). *J Clin Endocrinol Metab*. 2017;102(8):3075-84.
- 748 30. Ahmed LHM, Butler AE, Dargham SR, Latif A, Chidiac OM, Atkin SL, et al. Vitamin  
749 D(3) metabolite ratio as an indicator of vitamin D status and its association with diabetes  
750 complications. *BMC Endocr Disord*. 2020;20(1):161.
- 751 31. Ginsberg C, Hoofnagle AN, Katz R, Hughes-Austin J, Miller LM, Becker JO, et al. The  
752 Vitamin D Metabolite Ratio Is Associated With Changes in Bone Density and Fracture  
753 Risk in Older Adults. *J Bone Miner Res*. 2021;36(12):2343-50.
- 754 32. Meng L, Su C, Shapses SA, and Wang X. Total and free vitamin D metabolites in patients  
755 with primary hyperparathyroidism. *J Endocrinol Invest*. 2022;45(2):301-7.
- 756 33. Bansal N, Katz R, Appel L, Denburg M, Feldman H, Go AS, et al. Vitamin D Metabolic  
757 Ratio and Risks of Death and CKD Progression. *Kidney Int Rep*. 2019;4(11):1598-607.
- 758 34. Ginsberg C, Katz R, de Boer IH, Kestenbaum BR, Chonchol M, Shlipak MG, et al. The  
759 24,25 to 25-hydroxyvitamin D ratio and fracture risk in older adults: The cardiovascular  
760 health study. *Bone*. 2018;107:124-30.
- 761 35. Jesudason D, Need AG, Horowitz M, O'Loughlin PD, Morris HA, and Nordin BE.  
762 Relationship between serum 25-hydroxyvitamin D and bone resorption markers in  
763 vitamin D insufficiency. *Bone*. 2002;31(5):626-30.



- 764 36. Jones G. 100 YEARS OF VITAMIN D: Historical aspects of vitamin D. *Endocr Connect.*  
765 2022;11(4).
- 766 37. Rosen CJ, Abrams SA, Aloia JF, Brannon PM, Clinton SK, Durazo-Arvizu RA, et al.  
767 IOM committee members respond to Endocrine Society vitamin D guideline. *J Clin*  
768 *Endocrinol Metab.* 2012;97(4):1146-52.
- 769 38. Mendes MM, Hart KH, Lanham-New SA, and Botelho PB. Suppression of Parathyroid  
770 Hormone as a Proxy for Optimal Vitamin D Status: Further Analysis of Two Parallel  
771 Studies in Opposite Latitudes. *Nutrients.* 2020;12(4).
- 772 39. Looker AC, and Gunter EW. Hypovitaminosis D in medical inpatients. *N Engl J Med.*  
773 1998;339(5):344-5; author reply 5-6.
- 774 40. Shah S, Chiang C, Sikaris K, Lu Z, Bui M, Zebaze R, et al. Serum 25-Hydroxyvitamin D  
775 Insufficiency in Search of a Bone Disease. *J Clin Endocrinol Metab.* 2017;102(7):2321-  
776 8.
- 777 41. Gallagher JC, Jindal PS, and Smith LM. Vitamin D supplementation in young White and  
778 African American women. *J Bone Miner Res.* 2014;29(1):173-81.
- 779 42. Demay MB. The good and the bad of vitamin D inactivation. *J Clin Invest.*  
780 2018;128(9):3736-8.
- 781 43. Martineau C, Kaufmann M, Arabian A, Jones G, and St-Arnaud R. Preclinical safety and  
782 efficacy of 24R,25-dihydroxyvitamin D(3) or lactosylceramide treatment to enhance  
783 fracture repair. *J Orthop Translat.* 2020;23:77-88.
- 784 44. Martineau C, Naja RP, Hussein A, Hamade B, Kaufmann M, Akhouayri O, et al. Optimal  
785 bone fracture repair requires 24R,25-dihydroxyvitamin D3 and its effector molecule  
786 FAM57B2. *J Clin Invest.* 2018;128(8):3546-57.

- 787 45. LeBoff MS, Chou SH, Ratliff KA, Cook NR, Khurana B, Kim E, et al. Supplemental  
788 Vitamin D and Incident Fractures in Midlife and Older Adults. *N Engl J Med*.  
789 2022;387(4):299-309.
- 790 46. Cummings SR, and Rosen C. VITAL Findings - A Decisive Verdict on Vitamin D  
791 Supplementation. *N Engl J Med*. 2022;387(4):368-70.
- 792 47. Bouillon R, Manousaki D, Rosen C, Trajanoska K, Rivadeneira F, and Richards JB. The  
793 health effects of vitamin D supplementation: evidence from human studies. *Nat Rev*  
794 *Endocrinol*. 2022;18(2):96-110.
- 795 48. Pfothauer KM, and Shubrook JH. Vitamin D Deficiency, Its Role in Health and  
796 Disease, and Current Supplementation Recommendations. *J Am Osteopath Assoc*.  
797 2017;117(5):301-5.
- 798 49. Meyer MB, and Pike JW. Mechanistic homeostasis of vitamin D metabolism in the  
799 kidney through reciprocal modulation of Cyp27b1 and Cyp24a1 expression. *J Steroid*  
800 *Biochem Mol Biol*. 2020;196:105500.
- 801 50. Blau JE, Bauman V, Conway EM, Piaggi P, Walter MF, Wright EC, et al. Canagliflozin  
802 triggers the FGF23/1,25-dihydroxyvitamin D/PTH axis in healthy volunteers in a  
803 randomized crossover study. *JCI Insight*. 2018;3(8).
- 804 51. el-Hajj Fuleihan G, Klerman EB, Brown EN, Choe Y, Brown EM, and Czeisler CA. The  
805 parathyroid hormone circadian rhythm is truly endogenous--a general clinical research  
806 center study. *J Clin Endocrinol Metab*. 1997;82(1):281-6.
- 807 52. Kawai M, Kinoshita S, Shimba S, Ozono K, and Michigami T. Sympathetic activation  
808 induces skeletal Fgf23 expression in a circadian rhythm-dependent manner. *J Biol Chem*.  
809 2014;289(3):1457-66.

- 810 53. Bikle DD. The Free Hormone Hypothesis: When, Why, and How to Measure the Free  
811 Hormone Levels to Assess Vitamin D, Thyroid, Sex Hormone, and Cortisol Status. *JBMR*  
812 *Plus*. 2021;5(1):e10418.
- 813 54. Lemoine S, Figueres L, Bacchetta J, Frey S, and Dubourg L. Calcium homeostasis and  
814 hyperparathyroidism: Nephrologic and endocrinologic points of view. *Ann Endocrinol*  
815 *(Paris)*. 2022;83(4):237-43.
- 816 55. Bilezikian JP, Formenti AM, Adler RA, Binkley N, Bouillon R, Lazaretti-Castro M, et al.  
817 Vitamin D: Dosing, levels, form, and route of administration: Does one approach fit all?  
818 *Rev Endocr Metab Disord*. 2021;22(4):1201-18.
- 819 56. Robinson-Cohen C, Lutsey PL, Kleber ME, Nielson CM, Mitchell BD, Bis JC, et al.  
820 Genetic Variants Associated with Circulating Parathyroid Hormone. *J Am Soc Nephrol*.  
821 2017;28(5):1553-65.
- 822 57. Rejnmark L, Vestergaard P, Heickendorff L, and Mosekilde L. Determinants of plasma  
823 PTH and their implication for defining a reference interval. *Clin Endocrinol (Oxf)*.  
824 2011;74(1):37-43.
- 825 58. Tripathi A, Ansari M, Dandekar P, and Jain R. Analytical methods for 25-hydroxyvitamin  
826 D: advantages and limitations of the existing assays. *J Nutr Biochem*. 2022;109:109123.
- 827 59. Mazess RB, Bischoff-Ferrari HA, and Dawson-Hughes B. Vitamin D: Bolus Is Bogus-A  
828 Narrative Review. *JBMR Plus*. 2021;5(12):e10567.

829

Figure 1

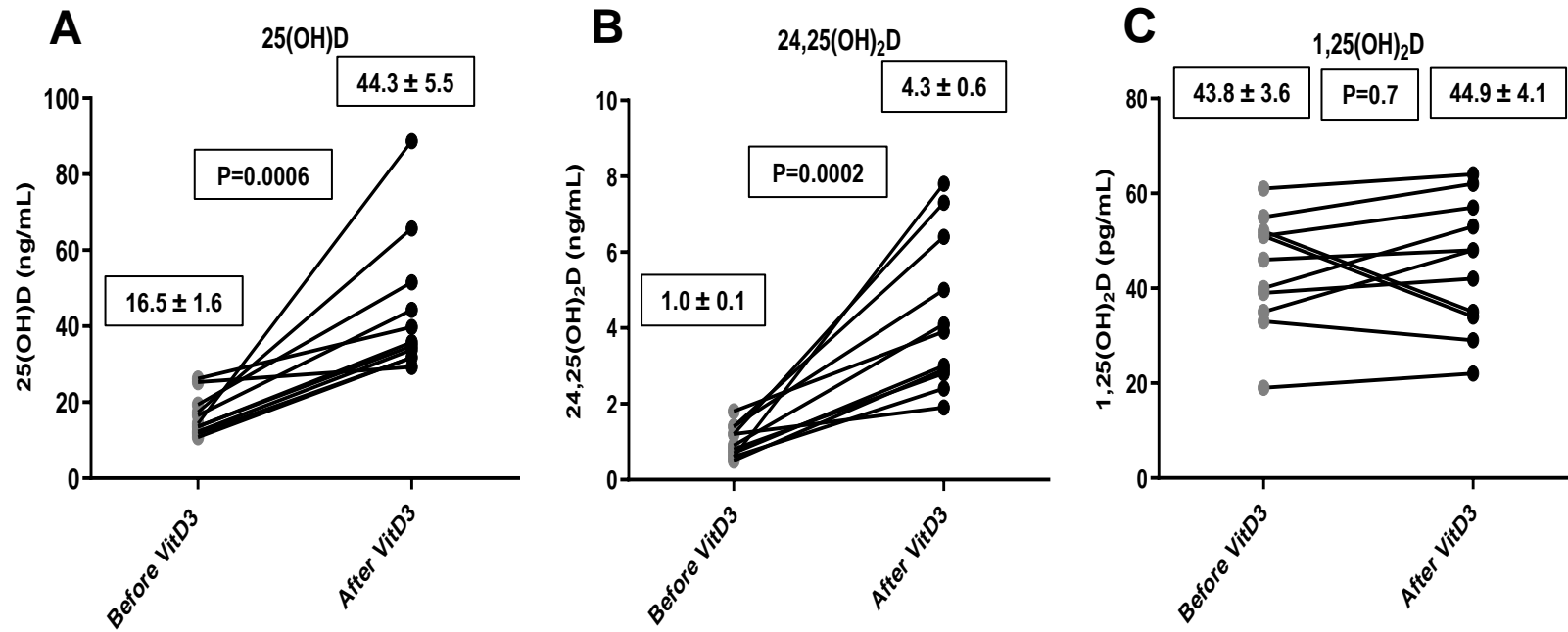
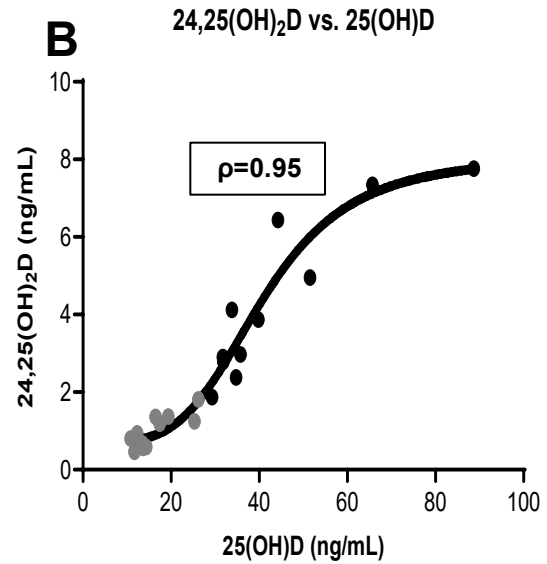
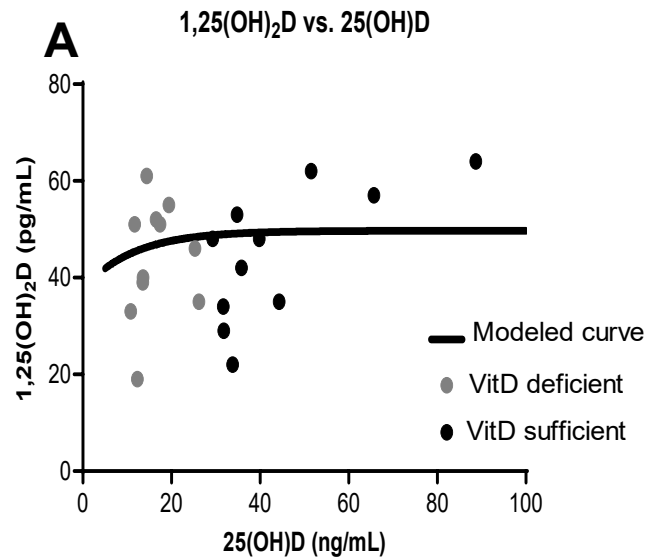
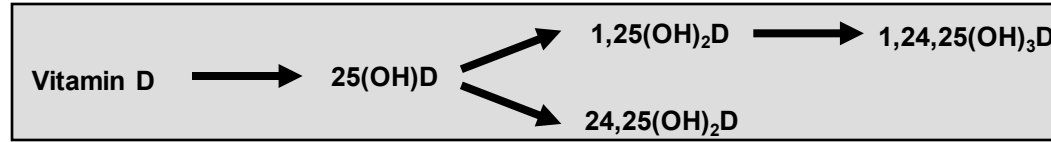


Figure 2



**Figure 3**

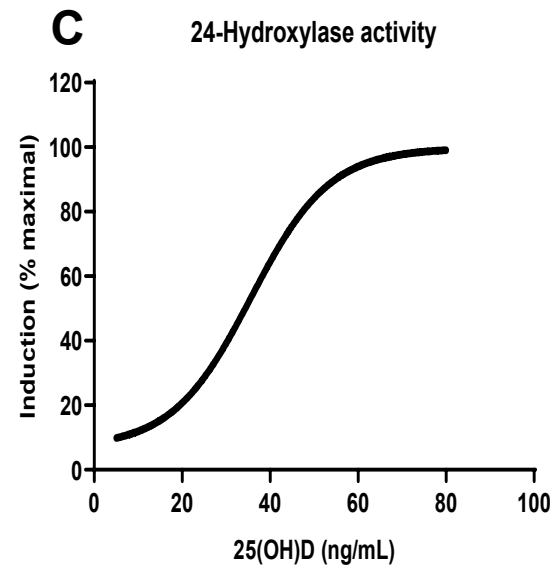
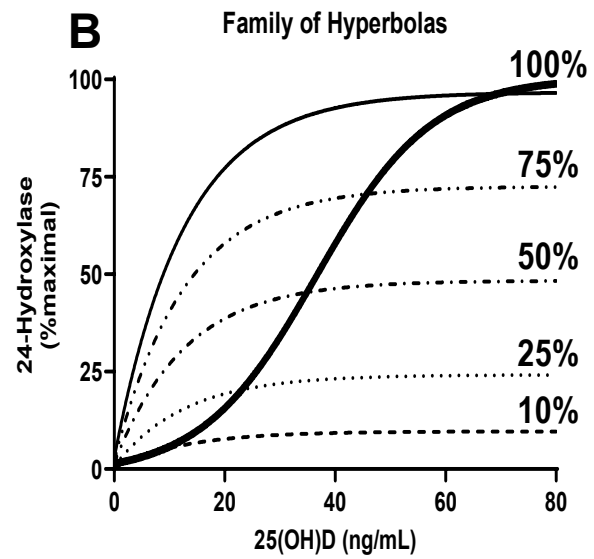
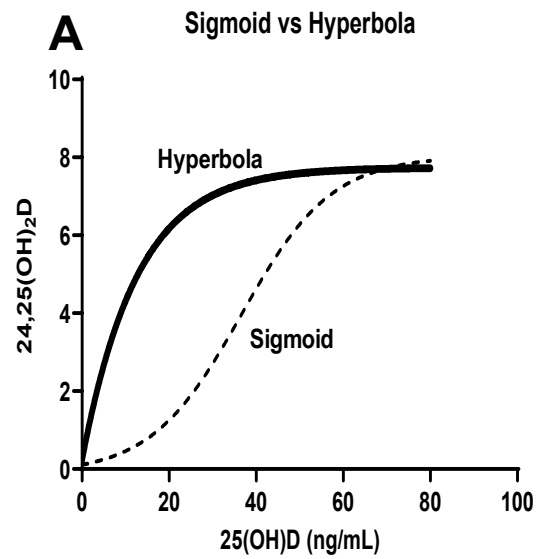


Figure 4

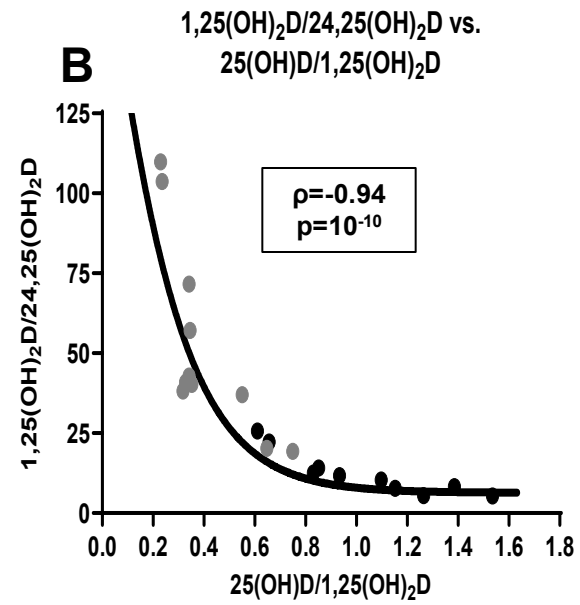
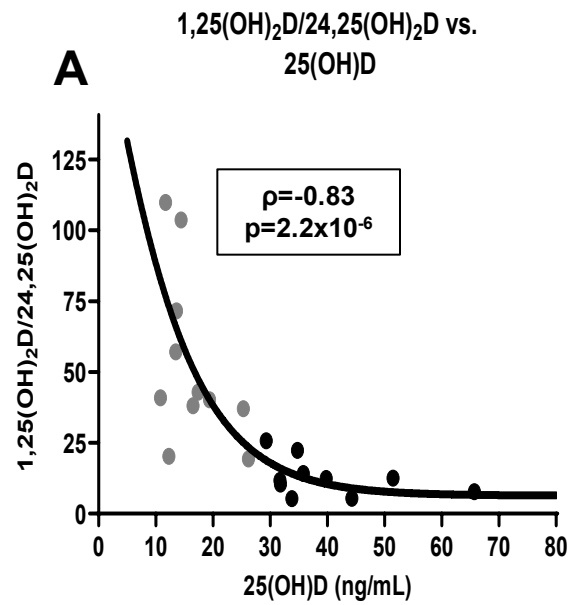
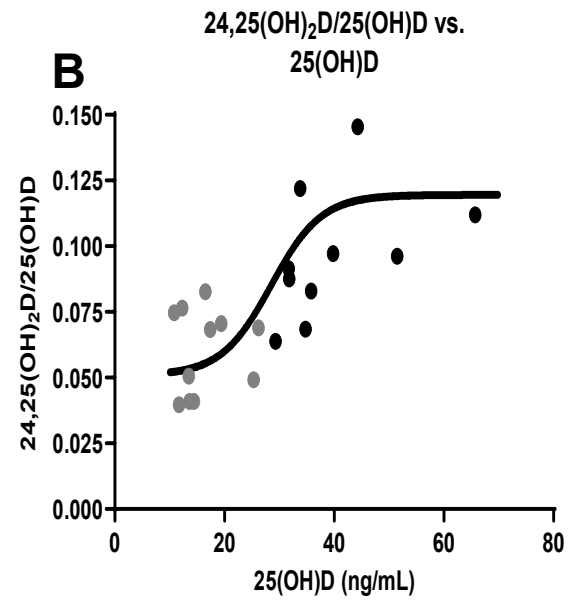
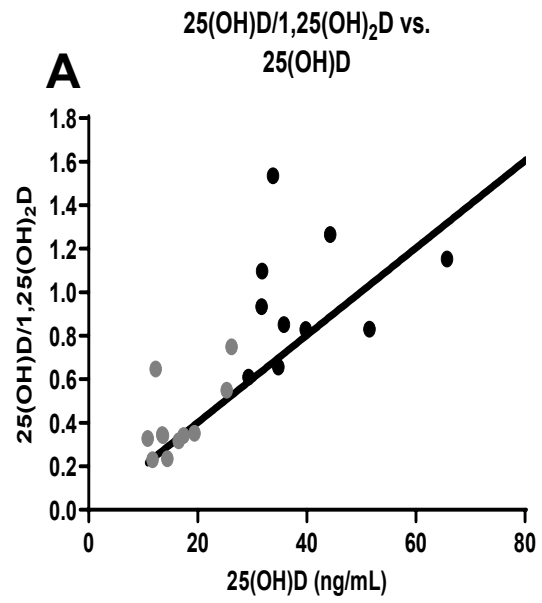


Figure 5





**Figure 6**

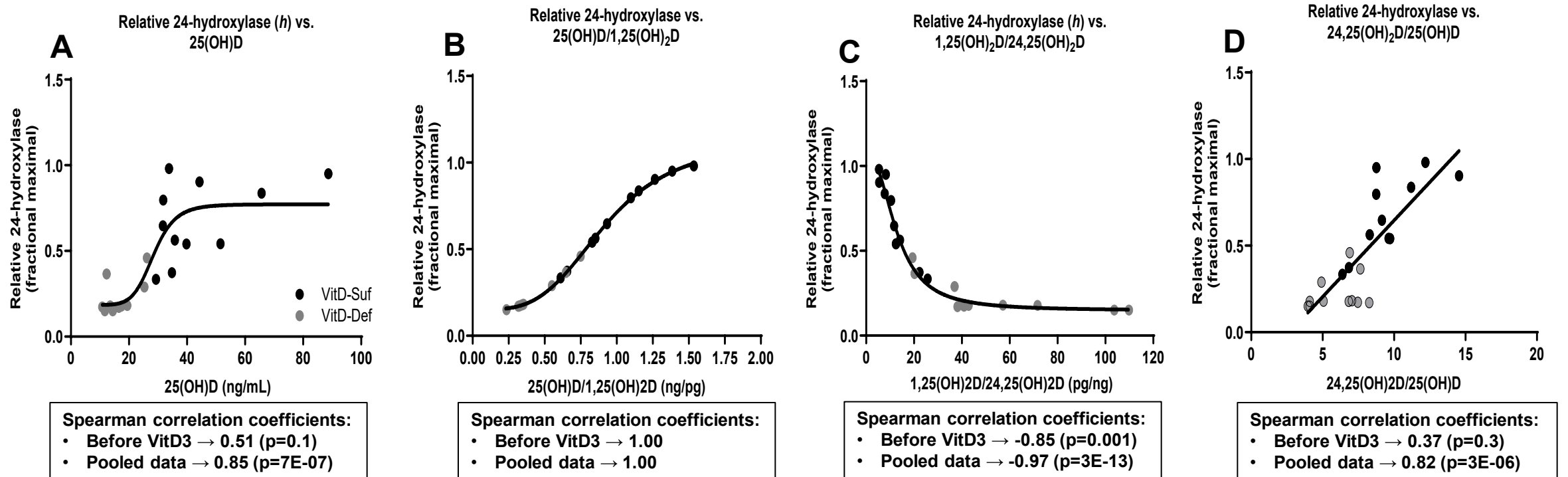


Figure 7

