

1 **Association of age-related spontaneous internal jugular vein reflux**
2 **with cognitive impairment and incident dementia**

3

4 **Authors:**

5 Utako Adachi, MD, PhD¹; Sono Toi, MD, PhD¹; Megumi Hosoya, MD, PhD¹;
6 Takao Hoshino, MD, PhD¹; Misa Seki, MD, PhD¹; Hiroshi Yoshizawa, MD,
7 PhD¹; Yukiko Tsutsumi, MD, PhD¹; Kenji Maruyama, MD, PhD¹; Kazuo
8 Kitagawa MD, PhD¹

9

10 **Affiliation:**

11 ¹Department of Neurology, Tokyo Women's Medical University Hospital,
12 Tokyo, Japan

13

14 **Correspondence to:**

15 Kazuo Kitagawa, MD

16 Department of Neurology, Tokyo Women's Medical University Hospital

17 8-1, Kawada-cho, Shinjuku-ku, 162-8666 Tokyo, Japan.

18 E-mail: kitagawa.kazuo@twmu.ac.jp

19 Tel: +81 3 3353 8111

20

21 **Cover title:** Jugular vein reflux and cognitive decline

22

23 **Total number of tables and figures:** Tables 3; Figures 3; Supplemental

24 Tables 4; Supplementary Figure 1

25

26 **Word count:** 4941

27

28

29 **Abstract**

30 **Background and purpose:** The vascular aspect of cognitive impairment
31 focuses on cerebral small-vessel disease and arterial circulation. However,
32 it remains unclear whether changes in the venous circulation contribute to
33 cognitive decline. This study aimed to clarify whether the spontaneous
34 jugular vein reflux (JVR) is associated with cognitive impairment and
35 incident dementia.

36 **Methods:** The Tokyo Women's Medical University Cerebrovascular
37 Disease registry is a prospective observational registry in which patients
38 with any evidence of cerebral vessel disease on magnetic resonance
39 imaging (MRI) were consecutively enrolled between October 2015 to July
40 2019. We employed carotid duplex sonography to measure the internal
41 jugular vein (IJV). The subjects were classified into two groups based on
42 the degree of JVR on either side: none, mild (JVR(-) group) and moderate,
43 severe (JVR (+) group) JVR. They underwent both the Mini-mental State
44 Examination (MMSE) and Montreal Cognitive Assessment-Japanese
45 (MoCA-J) global tests. Their cognitive status was prospectively assessed
46 until March 2022.

47 **Results:** Among 906 patients with an MMSE score \geq 24 enrolled in the
48 registry, 302 underwent duplex sonography of the IJV. Among them, 91
49 had spontaneous JVR on either side. Both MMSE and MoCA-J were
50 significantly lower in patients with JVR (+) group than in the JVR (-)
51 group. After the adjustment for age, sex, years of education, risk factors,
52 and MRI findings, including small-vessel disease and medial temporal
53 atrophy, intergroup differences in MoCA-J remained significant. Among
54 the cognitive subdomains, median executive function and memory scores
55 were significantly lower in the JVR (+) group than in the JVR (-) group.
56 During the median 5.2-year follow-up, 11 patients with incident dementia
57 (Alzheimer disease: 10, vascular dementia: 1) were diagnosed. Patients
58 with severe JVR were significantly more likely to be diagnosed with
59 dementia (log-rank test, $P= 0.031$).

60 **Conclusions:** Spontaneous IJV reflux especially severe JVR, was
61 associated with global cognitive function, and potentially with incident
62 dementia.

63

64 **Clinical Trial Registration:**

65 [URL:https://www.umin.ac.jp](https://www.umin.ac.jp). Unique identifier: UMIN000026671.

66

67

68 **Nonstandard Abbreviations and Acronyms**

69 IVJ = internal jugular vein; JVR = jugular vein reflux; HDL-C =

70 high-density lipoprotein cholesterol; LDL-C = low-density lipoprotein

71 cholesterol; MRI = magnetic resonance imaging; MMSE = mini-mental

72 State Examination; MoCA-J = Montreal Cognitive Assessment-Japanese;

73 STROBE = Strengthening the Reporting of Observational Studies in

74 Epidemiology; TIA = transient ischemic attack; TWMU = Tokyo Women's

75 Medical University; CDR = clinical dementia rating

76

77 **Introduction**

78

79 The vascular aspect on cognitive impairment and dementia has attracted
80 considerable attention because of the possibility of preventing dementia¹.

81 Aging influences vascular function in the arterial and venous systems.

82 Although previous studies mostly focused on cerebral small-vessel

83 disease (SVD) and arterial circulation in cognitive impairment, few

84 examined the involvement of age-related venous dysfunction in cognitive

85 function. The cerebral venous system plays an important role in normal

86 brain function^{2,3}, and an increase in cerebral vein pressure due to arterial

87 venous fistula⁴ or cerebral venous thrombosis⁵ contributes to white

88 matter lesions, cognitive decline and dementia. The internal jugular veins

89 (IJVs) are the main drainage route for cerebral venous outflow^{6,7}, and its

90 hemodynamics can be examined using a non-invasive ultrasound

91 method⁸. The flow of the IJVs usually moves from the brain to the heart

92 and antegrade; however, the frequency of the retrograde flow pattern,

93 jugular vein reflux (JVR), increases with aging⁸. Although findings in

94 multiple sclerosis are controversial⁹, the association of JVR with

95 normal-pressure hydrocephalus¹⁰ or severe white matter lesions¹¹ was
96 previously shown, and the retrograde transmission of venous pressure
97 waves due to JVR was suggested involved in blood brain barrier
98 disruption². Cerebral venous outflow pathways depend on posture; in the
99 spine position, the IJVs are the primary venous drains; however, in the
100 sitting and standing positions, jugular veins collapse due to high outflow
101 resistance, and the vertebral veins become the major exit pathways¹².
102 Although JVR has been examined mostly under the Valsalva maneuver in
103 the supine position, spontaneous JVR under normal breathing, as seen
104 during sleep, has a more sustained retrograde-transmitted venous
105 pressure into the cerebral venous system, and may have a greater impact
106 on cerebral circulation and amyloid clearance in daily life. Here, we aimed
107 to clarify whether JVR during normal breathing in the supine position is
108 related to cognitive function and incident dementia in non-demented
109 individuals with vascular risk factors.

110

111 **Method**

112 ***Study design and patients***

113 Data were derived from a prospective study, the Tokyo Women's Medical
114 University Cerebral Vessel Disease (TWMU CVD) Registry, from October
115 2015 to July 2019 (Registration-URL:
116 <https://www.umin.ac.jp/ctr/index.htm>; UMIN000026671). Written
117 informed consent was obtained from all participants. The study was
118 approved by the Institutional Review Board of Tokyo Women's Medical
119 University. The research protocol and inclusion criteria of the TWMU CVD
120 registry were previously described in detail¹³. Briefly, we consecutively
121 included patients aged 40 years and older, who presented with cerebral
122 vessel disease on magnetic resonance imaging (MRI) and with one or
123 more cerebrovascular risk factors, such as arterial hypertension, diabetes
124 mellitus, dyslipidemia, coronary artery disease, atrial fibrillation, or
125 smoking. The exclusion criteria for the registry were any kind of aphasia,
126 evidence of dementia (Clinical Dementia Rating¹⁴ ≥ 1), and dependence
127 on activities of daily living and walking. We excluded patients who
128 experienced vascular events within 1 month of enrollment. The protocol
129 conformed to the ethical guidelines of the 1975 Declaration of Helsinki in
130 line with the Ethical Guidelines for Epidemiological Research by the

131 Japanese government and the Strengthening the Reporting of
132 Observational Studies in Epidemiology (STROBE) guidelines.

133

134 ***Cognitive examination***

135 Patients underwent both the Mini-Mental State Examination (MMSE)¹⁵
136 and the Japanese version of the Montreal Cognitive Assessment
137 (MoCA-J)¹⁶ within 3 months of the MRI examination. Among items in
138 MMSE and MoCA-J, we extracted executive function (0-4), memory (0-8),
139 orientation (0-10), language (0-13), visuospatial function (0-5) and
140 attention and working memory (0-11) (**Supplementary Table I**).

141

142 ***MRI Assessment***

143 Each subject underwent a brain MRI scan within 1 year of entry to the
144 registry. The MRI assessment included white matter hyperintensities
145 (WMH) consisting of periventricular hyperintensities (PVH) and deep
146 white matter hyperintensities (DWMH), lacunar infarctions (LI), cerebral
147 microbleeds (CMBs), and medial temporal atrophy (MTA). The degree of
148 WMH severity was visually rated using axial fluid-attenuated inversion

149 recovery (FLAIR) images. Based on the Fazekas scale (0 = none; 1 =
150 mild; 2 = moderate; 3 = severe)¹⁷, PVH and DWMH were scored as 0-3;
151 the total WMH score was 0-6 with the sum of PVH and DWMH. The
152 degrees of WMH in the frontal, temporal, parietal, and occipital lobes
153 were visually rated using the Scheltens Scale¹⁸ with slight modifications:
154 scores of 0-6 (0 = absent, 1 = <3 mm in ≤ 5 , 2 = <3 mm in ≥ 6 , 3 = 4-
155 10 mm in ≤ 5 , 4 = 4-10 mm in ≥ 6 , 5 = ≥ 11 mm in ≥ 1 , and 6 = confluent)
156 were assigned for deep WMH (frontal, temporal, parietal, and occipital).
157 Lesions in the basal ganglia, internal capsule, centrum semiovale, or
158 brainstem, with hypointensity on T1-weighted imaging (T1WI),
159 hyperintensity on T2-weighted imaging (T2WI), and a hyperintense rim
160 around the cavity on FLAIR were defined as LI¹⁹; the sizes of which were
161 from 3-15 mm. CMBs were defined as punctate or small patchy lesions
162 <10 mm in diameter with clearly low intensity on T2*WI¹⁹. MTA was
163 visually evaluated as described by Kim et al.²⁰ All MRI feature grades were
164 rated by two trained board-certified neurologists (M.H. and M.S.), who
165 were blinded to the clinical details. The interrater κ for each CSVD feature
166 or MTA score was between 0.80-0.85. A third rater (K.K.) was consulted

167 in cases of disagreement.

168

169 ***Carotid Duplex sonography***

170 Color-coded duplex sonography was performed using a 7.5-MHz linear
171 transducer (Hitachi Aloka Prosound α 7; Hitachi-Aloka Medical, Ltd. Tokyo,
172 Japan). On examination, the subjects were placed in a head-straight, flat
173 supine position. After routine examination of both carotid arteries for the
174 measurement of intima-media complex thickness, % stenosis (if present),
175 and peak systolic blood flow of the common, internal carotid, and
176 vertebral arteries, bilateral IJVs were examined 5 cm above the junction
177 of the IJV and brachiocephalic vein, as described previously with slight
178 modification⁸). The cross-sectional lumen was recorded, and the probe
179 was turned by 90⁰ at the same site, the IJV was insonated longitudinally,
180 and the color box adjusted to include the entire IJV lumen. The Doppler
181 spectrum was then measured for at least three cardiac cycles under
182 normal expiration. We divided the flow pattern into four groups (**Figure**
183 **1**); anterograde flow during the entire cardiac cycle without retrograde
184 flow (Grade A; **Figure 1A**), anterograde flow during the entire cardiac

185 cycle with intermittent retrograde flow (Grade B; **Figure 1B**), a
186 to-and-flow pattern, in which anterograde and retrograde flow appeared
187 alternatively during the cardiac cycle (Grade C; **Figure 1C**), and
188 retrograde flow during the entire cardiac cycle without anterograde flow
189 (Grade D; **Figure 1D**). The former two, mainly anterograde flow, were
190 designated JVR (-), while the latter two were designated JVR (+). For
191 evaluation of IJV in each patient, the higher JVR grade among both sides
192 was used.

193 An interrater reproducibility test of IJV in 40 vessels of 20 patients (two
194 measurements performed within 30 min) by two blinded examiner (U.A.
195 and S.T.) showed an excellent reproducibility; concordance rates among 4
196 grades and between JVR (-) and (+) groups, were 100% (40/40), and
197 97.5% (39/40), respectively. An intrarater reproducibility test (U.A.) of
198 IJV in 128 vessels of 64 patients (two measurements performed blindly at
199 intervals between 6 months and 1 year) also showed a fair reproducibility
200 (concordance rate among four grades and between JVR (-) and (+)
201 groups were 81.3% (104/128) and 97.7%, (125/128), respectively.

202

203 ***Diagnosis of dementia***

204 Cognitive status was assessed prospectively by a neurologist using the
205 MMSE and CDR¹⁴. Patients visited outpatient clinic settings to control risk
206 factors every 3 months for prevention of stroke. Changes in patients'
207 general medical condition were obtained yearly through medical records
208 and interview. Furthermore, several aspects of everyday cognitively
209 driven functioning to rate patients on the CDR were assessed at every
210 clinical visit. Thus, annual evaluations were performed by trained
211 neurologists and included a medical history, CDR score determination,
212 and neurological examination. Patients were cognitively screened with
213 the MMSE at follow-up visits. The final follow-up data were collected on
214 March 2022. During the follow-up periods, patients with suspected
215 cognitive decline were periodically examined by a neurologist. Clinically
216 significant cognitive impairment was defined as MMSE score < 24 or a
217 decline ≥ 4 points. In addition, patients were considered to have probable
218 dementia if they had 2 consecutive semiannual CDR scores ≥ 1 and did
219 not revert back to normal cognition. To avoid missing incident dementia
220 cases, we also continuously monitored the medical records of all

221 participants at our clinic or other clinic to obtain information on diagnosed
222 dementia and stroke or death. Furthermore, for those patients who could
223 not attend the clinical visit, a phone interview collecting clinical data was
224 performed with the patient and the carer, whenever possible. Finally, an
225 independent committee of neurologists reviewed all potential cases of
226 dementia with all available information to reach a consensus on the
227 diagnosis, according to the DSM-5²¹. Dementia subtypes were diagnosed
228 according to standardized criteria^{22,23}. Time to dementia was defined as
229 the time between the baseline visit and the date of dementia diagnosis. In
230 addition, patients were followed until death or refusal of further
231 participation. Those who did not progress to dementia were censored at
232 their last visit.

233

234 ***Statistical analysis***

235 All analyses were performed using JMP 14 Pro. For baseline
236 characteristics, continuous variables are expressed as mean and standard
237 deviation (SD), while categorical variables are expressed as frequency
238 and percentage. Ordinal and non-normally distributed variables are

239 shown as median and interquartile range. Relationships between the
240 MMSE, MoCA-J, or each cognitive domain and continuous variables were
241 examined using Person's correlation analysis. For categorical variables,
242 differences in MMSE and MoCA-J scores were examined using an unpaired
243 t-test. Furthermore, a linear mixed model was used to examine the
244 associations between JVR and MMSE or MoCA-J scores by controlling for
245 age, sex, education, risk factors, and MRI findings. The Kaplan-Meier
246 method with log-rank tests was used to compare dementia-free survival
247 for JVR.

248

249 **Results**

250 A total of 302 patients (71.1 ± 10.5 years; 177 men, 125 women)
251 underwent carotid ultrasonography with IJV evaluations
252 (**Supplementary Figure I**). Their demographic and clinical
253 characteristics are presented in **Table 1**.

254 Among the 302 patients, 122 (40.4 %) showed Grade A in IJV, 89
255 (29.5%) Grade B, 76 (25.2%) Grade C, 15 (5.0%) Grade D (Figure 1A-D).
256 In total, 91 (30.1%) showed JVR (Figure 1C, 1D) on either side. The

257 jugular flow patterns of the 604 vessels in 302 patients are shown in
258 **Supplementary Table II**. JVR was found more frequently on the left side
259 (20.9%, 63/302) than on the right side (13.2%, 42/302). Fourteen
260 patients (4.6%) showed bilateral JVR, while 77 (25.5%) showed a
261 unilateral JVR. The incidence of JVR increased with age (**Figure 2A**).
262 Patients with JVR were older ($P<0.001$), and more likely had a history of
263 previous ischemic heart disease ($P=0.034$) than those without JVR.
264 (**Table 1**). In terms of MRI findings, the Fazekas WMH scores were similar
265 between the two groups, but the occipital WMH grades were more severe
266 in patients with versus without JVR ($P=0.005$). (**Table 1**).
267 MMSE scores were 28.5 ± 1.7 , 28.2 ± 1.9 , 27.9 ± 1.8 and 27.0 ± 2.0 in Grade
268 A, B, C and D, respectively (ANOVA, $P=0.107$). MoCA-J scores were
269 25.2 ± 3.1 , 24.3 ± 3.3 , 23.1 ± 3.2 and 21.6 ± 2.5 in Grade A, B, C and D,
270 respectively (ANOVA, $P<0.001$). Global cognitive function and each
271 subdomain in JVR (-) and JVR (+) groups are shown in **Table 2**. The
272 distribution patterns of MMSE and MoCA-J scores between the JVR (-) and
273 JVR (+) groups are shown in **Figures 2B and 2C**. Mean MMSE and
274 MoCA-J scores were significantly lower in the JVR (+) versus JVR (-)

275 group, while the mean executive function and memory scores were
276 significantly lower in the JVR (+) versus JVR (-) group. The scores of the
277 other subdomains were similar between groups.

278 The MMSE and MoCA-J scores with confounding factors are shown in
279 **Supplementary Table III**. Age was significantly associated with both
280 MMSE and MoCA-J scores; mean MMSE scores were higher in patients
281 with high education, while mean MoCA-J scores were higher in women.
282 Other vascular risk factors did not show a significant relationship with
283 MMSE and MoCA-J scores among the 302 patients.

284 The association between JVR and MoCA-J score remained significant after
285 the adjustment for confounding factors (**Table 3**). The association
286 between JVR and MMSE was significant after the adjustment for age and
287 sex; however, the association was no longer significant after the further
288 adjustment for education and risk factors (**Table 3**).

289 From the initial cohort (N=302), 13 patients (4.3%) withdrew consent,
290 five patients (1.7%) were lost, and four patients (1.3%) had died during
291 follow-up. 81.1% (n=245) of the patients could be examined in a clinical
292 visit at the end of follow-up. Among these 245 patients, 25 patients had a

293 decline in MMSE score of ≥ 4 points, or had an MMSE score < 24 by the end
294 of follow-up. These patients were subsequently examined for CDR score
295 determination, and 9 were diagnosed with dementia. Also using data
296 from telephone interview or medical records, we ascertained cognitive
297 status in the remaining 35 patients (11.6% of initial sample), and 2
298 patients were diagnosed with dementia. Thus, during the median
299 5.2-year follow-up, all-cause dementia was diagnosed in 11 patients
300 (Alzheimer disease: 10, vascular dementia: 1). The survival analyses for
301 dementia-free rate curves created with respect to JVR are shown in
302 Figure 3. Although no significant difference was seen between JVR (-) and
303 JVR (+) groups (Figure 3A), patients with severe JVR were significantly
304 more likely to be diagnosed with dementia compared with other groups
305 (Figure 3B, log-rank test, $P=0.006$).

306

307

308 **Discussion**

309 To the best of our knowledge, this is the first study to clarify the
310 association between spontaneous JVR and cognitive function or incident

311 dementia in individuals without dementia. This study included more than
312 300 patients; therefore we examined the association after adjusting for
313 confounding factors with JVR and cognitive function.

314 Several neurological diseases and conditions are associated with cerebral
315 venous insufficiency. Although the correlation between venous
316 insufficiency and multiple sclerosis proposed by Zamboni et al.²⁴ was later
317 denied²⁵, age-related neurological conditions such as normal
318 hydrocephalus¹⁰, transient global amnesia²⁶, white matter lesions¹¹ and
319 cognitive decline in mitral valve regurgitation²⁷ were demonstrated
320 associated with JVR.

321 The incidence of JVR under spontaneous breathing, the Valsalva
322 maneuver, and both in previous studies is summarized in
323 **Supplementary Table IV**. Both age and cardiac dysfunction increase the
324 incidence of JVR². Our study also clearly showed that aging increased the
325 incidence of JVR (Figure 1). Under spontaneous breathing, the incidence
326 of JVR seemed higher on the left versus right side^{11,28,29}, whereas under a
327 Valsalva maneuver, it was similar or higher on the right side^{8,27,30}. The
328 narrow space between the sternum and the thoracic outlet arteries,

329 especially under normal breathing, might compress the left
330 brachiocephalic vein, leading to JVR in the left internal vein²⁷. Full
331 inspiration under the Valsalva maneuver increases the distance between
332 the aortic arch and sternum, thus extinguishing that tendency³¹. In
333 contrast, the right IJV is closer to the heart than the left IJV, and more
334 susceptible to retrograde pressure via the central vein under the Valsalva
335 maneuver, which might explain the higher incidence of JVR in the right IJV
336 in previous studies.

337 Several mechanisms would underlie the association between the JVR and
338 cognitive function. First, an increase in cerebral venous pressure could
339 decrease the absorption of cerebral spinal fluid through the arachnoid villi
340 as seen in normal pressure hydrocephalus. Second, cerebral venous
341 insufficiency in JVR would influence glymphatic circulation³² and impair
342 amyloid β clearance. Third, increased cerebral venous pressure may
343 disrupt the blood-brain barrier, trigger microhemorrhage and decrease
344 cerebral blood flow, resulting in cognitive decline². Our results showed
345 that JVR is related to occipital WMH (Table 1), in line with previous
346 findings.¹¹

347 This study had several limitations. First, our study suggested that severe
348 JVR was associated with incident dementia, but the event number was
349 small and did not allow us to adjust confounding factors such as age and
350 MMSE scores, therefore, further studies will be required to clarify whether
351 JVR predicts incident dementia. Second, the evaluation of white matter
352 lesions and MTA was semi-quantitative. A quantitative evaluation is
353 needed to precisely clarify the association between the JVR and MRI
354 findings. Third, it remains unclear whether JVR intervention recovers
355 cognitive function. And finally, we evaluated the JVR under normal
356 breathing. Therefore, it remains unknown whether JVR during the
357 Valsalva maneuver is associated with cognitive decline. However, in daily
358 life, especially during sleep, we breathe normally, not in full inspiration, in
359 the spine position. The incidence of JVR in the present study reflects the
360 percentage of JVR during sleep in daily life, and would have a greater
361 impact on the cerebral venous circulation than the Valsalva maneuver.

362 In conclusion, here we clarified the relation between JVR with MoCA-J
363 scores independent of age and confounding factors, and suggested the
364 association between severe JVR and incident dementia. Our findings

365 suggest that spontaneous JVR affects cognitive function.

366

367 **Acknowledgements**

368 None.

369

370 **Sources of Funding**

371 None.

372

373 **Disclosures**

374 Dr Kitagawa reports personal fees from Kyowa Kirin and Kowa, grants and
375 personal fees from Daiichi Sankyo, outside the submitted work.

376

377 Other authors have nothing to disclose.

378

379 **Supplemental Materials**

380 Table I-IV Figure I

381 **Reference**

- 382 1. Gorelick PB, Scuteri A, Black SE, Decarli C, Greenberg SM, Iadecola C,
383 Launer LJ, Laurent S, Lopez OL, Nyenhuis D, et al. Vascular
384 contributions to cognitive impairment and dementia: a statement for
385 healthcare professionals from the american heart
386 association/american stroke association. *Stroke*. 2011;42:2672-713.
387 doi: 10.1161/STR.0b013e3182299496.
- 388 2. Fulop GA, Tarantini S, Yabluchanskiy A, Molnar A, Prodan CI, Kiss T,
389 Csipo T, Lipecz A, Balasubramanian P, Farkas E, et al. Role of
390 age-related alterations of the cerebral venous circulation in the
391 pathogenesis of vascular cognitive impairment. *Am J Physiol Heart*
392 *Circ Physiol*. 2019;316:H1124-H1140. doi:
393 10.1152/ajpheart.00776.2018.
- 394 3. Molnár AÁ, Nádasy GL, Dörnyei G, Patai BB, Delfavero J, Fülöp GÁ,
395 Kirkpatrick AC, Ungvári Z, Merkely B. The aging venous system: from
396 varicosities to vascular cognitive impairment. *Geroscience*.
397 2021;43:2761-2784. doi: 10.1007/s11357-021-00475-2.
- 398 4. Waragai M, Takeuchi H, Fukushima T, Haisa T, Yonemitsu T. MRI and

399 SPECT studies of dural arteriovenous fistulas presenting as pure
400 progressive dementia with leukoencephalopathy: a cause of treatable
401 dementia. *Eur J Neurol.* 2006;13:754-9. doi:
402 10.1111/j.1468-1331.2006.01318.x.

403 5. Bugnicourt JM, Guegan-Massardier E, Roussel M, Martinaud O,
404 Canaple S, Triquenot-Bagan A, Wallon D, Lamy C, Leclercq C,
405 Hannequin D, Godefroy O. Cognitive impairment after cerebral venous
406 thrombosis: a two-center study. *J Neurol.* 2013;260:1324-31. doi:
407 10.1007/s00415-012-6799-5

408 6. Griffiths PD: Vascular supply of the brain. In: Gray's Anatomy, 14ed
409 ed., ed. By Crossman AR, Churchill Livingstone, Philadelphia, 2008, pp.
410 247-256.

411 7. Schaller B. Physiology of cerebral venous blood flow: from
412 experimental data in animals to normal function in humans. *Brain Res*
413 *Brain Res Rev.* 2004;46:243-60. doi:
414 10.1016/j.brainresrev.2004.04.005

415 8. Chung CP, Lin YJ, Chao AC, Lin SJ, Chen YY, Wang YJ, Hu HH. Jugular
416 venous hemodynamic changes with aging. *Ultrasound Med Biol.*

- 417 2010;36:1776-82. doi: 10.1016/j.ultrasmedbio.2010.07.006
- 418 9. Paul F, Wattjes MP. Chronic cerebrospinal venous insufficiency in
419 multiple sclerosis: the final curtain. *Lancet*. 2014;383:106-8. doi:
420 10.1016/S0140-6736(13)61912-1.
- 421 10. Kuriyama N, Tokuda T, Miyamoto J, Takayasu N, Kondo M, Nakagawa
422 M. Retrograde jugular flow associated with idiopathic normal pressure
423 hydrocephalus. *Ann Neurol*. 2008;64:217-21. doi:
424 10.1002/ana.21410.
- 425 11. Chung CP, Wang PN, Wu YH, Tsao YC, Sheng WY, Lin KN, Lin SJ, Hu
426 HH. More severe white matter changes in the elderly with jugular
427 venous reflux. *Ann Neurol*. 2011r;69:553-9. doi:
428 10.1002/ana.22276.
- 429 12. Gisolf J, van Lieshout JJ, van Heusden K, Pott F, Stok WJ, Karemaker
430 JM. Human cerebral venous outflow pathway depends on posture and
431 central venous pressure. *J Physiol*. 2004;560(Pt 1):317-27. doi:
432 10.1113/jphysiol.2004.070409.
- 433 13. Kubota M, Iijima M, Shirai Y, Toi S, Kitagawa K. Association Between
434 Cerebral Small Vessel Disease and Central Motor Conduction Time in

- 435 Patients with Vascular Risk. *J Stroke Cerebrovasc Dis.*
436 2019;28:2343-2350. doi:
437 10.1016/j.jstrokecerebrovasdis.2019.05.030.
- 438 14. Hughes CP, Berg L, Danziger WL, Coben LA, Martin RL. A new clinical
439 scale for the staging of dementia. *Br J Psychiatry* 1982
440 Jun;140:566-72. doi: 10.1192/bjp.140.6.566.
- 441 15. Folstein MF, Folstein SE, McHugh PR. "Mini-mental state". A practical
442 method for grading the cognitive state of patients for the clinician. *J*
443 *Psychiatr Res.* 1975;12:189-98. doi:
444 10.1016/0022-3956(75)90026-6.
- 445 16. Fujiwara Y, Suzuki H, Yasunaga M, Sugiyama M, Ijuin M, Sakuma N, et
446 al. Brief screening tool for mild cognitive impairment in older
447 Japanese: validation of the Japanese version of the Montreal Cognitive
448 Assessment. *Geriatr Gerontol Int.* 2010;10:225-32. doi:
449 10.1111/j.1447-0594.2010.00585.x.
- 450 17. Fazekas F, Chawluk JB, Alavi A, Hurtig HI, Zimmerman RA. MR signal
451 abnormalities at 1.5 T in Alzheimer's dementia and normal aging. *AJR*
452 *Am J Roentgenol.* 1987;149:351-6. doi: 10.2214/ajr.149.2.351.

- 453 18. Scheltens P, Barkhof F, Leys D, Pruvo JP, Nauta JJ, Vermersch P,
454 Steinling M, Valk J. A semiquantitative rating scale for the assessment
455 of signal hyperintensities on magnetic resonance imaging. *J Neurol Sci.*
456 1993;114:7–12. doi: 10.1016/0022-510x(93)90041-v.
- 457 19. Wardlaw JM, Smith EE, Biessels GJ, Cordonnier C, Fazekas F, Frayne R,
458 Lindley RI, O'Brien JT, Barkhof F, Benavente OR, et al. Neuroimaging
459 standards for research into small vessel disease and its contribution to
460 ageing and neurodegeneration. *Lancet Neurol.* 2013;12:822-38. doi:
461 10.1016/S1474-4422(13)70124-8.
- 462 20. Kim GH, Kim JE, Choi KG, Lim SM, Lee JM, Na DL, Jeon JH.
463 T1-weighted axial visual rating scale for an assessment of medial
464 temporal atrophy in Alzheimer's disease. *J Alzheimers Dis.*
465 2014;41:169-78. doi: 10.3233/JAD-132333.
- 466 21. Regier DA, Kuhl EA, Kupfer DJ. The DSM-5: Classification and criteria
467 changes. *World Psychiatry* 2013;12:92-8. doi: 10.1002/wps.20050.
- 468 22. McKhann GM, Knopman DS, Chertkow H, Hyman BT, Jack JrCR, Kawas
469 CH, Klunk WF, Koroshetz WJ, Manly JJ, Mayeux R, et al. The diagnosis
470 of dementia due to Alzheimer's disease: recommendations from the

471 National Institute on Aging-Alzheimer's Association workgroups on
472 diagnostic guidelines for Alzheimer's disease. *Alzheimers Dement*
473 2011;7:263-9. doi: 10.1016/j.jalz.2011.03.005.

474 23. Gorelick PB, Scuteri A, Black SE, Decarli C, Greenberg SM, Iadecola C,
475 Launer LJ, Laurent S, Lopez OL, Nyenhuis D, et al. Vascular
476 contributions to cognitive impairment and dementia: a statement for
477 healthcare professionals from the american heart
478 association/american stroke association. *Stroke*. 2011;42:2672-713.
479 doi: 10.1161/STR.0b013e3182299496.

480 24. Zamboni P, Galeotti R, Menegatti E, Malagoni AM, Tacconi G, Dall'Ara S,
481 Bartolomei I, Salvi F. Chronic cerebrospinal venous insufficiency in
482 patients with multiple sclerosis. *J Neurol Neurosurg Psychiatry*.
483 2009;80:392-9. doi: 10.1136/jnnp.2008.157164.

484 25. Traboulsee AL, Knox KB, Machan L, Zhao Y, Yee I, Rauscher A, Klass D,
485 Szkup P, Otani R, Kopriva D, et al. Prevalence of extracranial venous
486 narrowing on catheter venography in people with multiple sclerosis,
487 their siblings, and unrelated healthy controls: a blinded, case-control
488 study. *Lancet*. 2014;383(9912):138-45. doi:

- 489 10.1016/S0140-6736(13)61747-X.
- 490 26. Sander D, Winbeck K, Etgen T, Knapp R, Klingelhöfer J, Conrad B.
491 Disturbance of venous flow patterns in patients with transient global
492 amnesia. *Lancet.* 2000;356(9246):1982-4. doi:
493 10.1016/S0140-6736(00)03313-4.
- 494 27. Sung SH, Lee CW, Wang PN, Lee HY, Chen CH, Chung CP. Cognitive
495 functions and jugular venous reflux in severe mitral regurgitation: A
496 pilot study. *PLoS One.* 2019;14(2):e0207832. doi:
497 10.1371/journal.pone.0207832.
- 498 28. Beggs C, Chung CP, Bergsland N, Wang PN, Shepherd S, Cheng CY,
499 Dwyer MG, Hu HH, Zivadinov R. Jugular venous reflux and brain
500 parenchyma volumes in elderly patients with mild cognitive
501 impairment and Alzheimer's disease. *BMC Neurol.* 2013;13:157. doi:
502 10.1186/1471-2377-13-157.
- 503 29. Nakamori M, Ebiko Y, Tateyaka K, Ogawa K, Kurose M, Nishino M,
504 Hirata A, Hayashi Y, Matsushita H, Imamura E, Wakabayashi S.
505 Usefulness for the evaluation of the jugular venous flow patterns with
506 ultrasonography. *Neurosonology* 31(3): 125-129, 2018

- 507 30. Akkawi NM, Agosti C, Borroni B, Rozzini L, Magoni M, Vignolo LA,
508 Padovani A. Jugular valve incompetence: a study using air contrast
509 ultrasonography on a general population. *J Ultrasound Med.*
510 2002;21:747-51. doi: 10.7863/jum.2002.21.7.747.
- 511 31. T Tanaka, K Uemura, M Takahashi, S Takehara, T Fukaya, T Tokuyama,
512 A Satoh, H Ryu. Compression of the left brachiocephalic vein: cause of
513 high signal intensity of the left sigmoid sinus and internal jugular vein
514 on MR images. *Radiology* 1993;188:355-61. doi:
515 10.1148/radiology.188.2.8327678.
- 516 32. Mestre H, Mori Y, Nedergaard M. The Brain's Glymphatic System:
517 Current Controversies. *Trends Neurosci.* 2020;43:458-466. doi:
518 10.1016/j.tins.2020.04.003.
- 519

520 **Figure Titles and Legends**

521 **Figure 1. Pattern of internal jugular vein blood flow**

522 (A) Anterograde flow during the entire cardiac cycle without retrograde
523 flow, (B) Anterograde flow during the entire cardiac cycle with
524 intermittent retrograde flow, (C) To-and-flow pattern in which
525 anterograde and retrograde flow appear alternatively during the cardiac
526 cycle, (D) Retrograde flow during the entire cardiac cycle without
527 anterograde flow. The former two, mainly anterograde flow, are
528 designated jugular vein reflux (JVR) (-), while the latter two are
529 designated JVR (+).

530

531 **Figure 2: (A) Incidence of jugular vein reflux (JVR) by age, (B)**
532 **Mini-mental State Examination (MMSE) score and (C) Montreal**
533 **Cognitive Assessment-Japanese (MoCA-J) score in patient groups**
534 **with versus without JVR**

535

536 **Figure 3: Kaplan-Meier survival analysis of time to dementia**
537 **diagnosis by baseline jugular vein reflux (JVR) grade**

Table 1: Baseline characteristics of patients.

Characteristics	All (n=302)	Jugular Vein Reflex		P value
		(-) (n=211)	(+) (n=91)	
Age, years	71.1±10.5	66.7±10.4	71.8±9.9	<0.001
Sex, men, %	58.6	56.8	62.9	0.363
Education, years	14.4±2.5	14.4 ±2.6	14.7±2.4	0.285
Hypertension, %	69.4	69.5	69.4	0.946
SBP, mmHg	136.9±18.8	135.9±20.8	137.9±18.7	0.522
DBP, mmHg	75.7±11.9	76.3±12.3	74.2±10.9	0.126
Diabetes mellitus, %	26.6	25.4	29.4	0.447
HbA1c, %	6.3±0.9	6.2±0.9	6.4±1.0	0.304
Dyslipidemia, %	56.3	55.4	57.6	0.680
LDL-C, mg/dl	105.2±28.1	105.7±27.8	106.1±29.0	0.730
HDL-C, mg/dl	63.5±20.1	63.5±21.3	63.5±16.8	0.826
TG, mg/dl	115.9±59.1	116.0±60.6	115.7±55.2	0.850
Atrial fibrillation, %	9.1	8.5	10.7	0.751
Chronic kidney disease, %	49.8	48.3	53.5	0.419
eGFR	60.7±17.2	61.4±17.2	59.1±17.3	0.461
Cigarette current smoking, %	6.7	8.1	3.6	0.167
Previous cerebrovascular disease, %	52.9	38.9	46.5	0.187
Previous ischemic heart disease, %	13.2	10.6	19.3	0.034
Medication, statin use, %	61.0	60.1	64.0	0.538
Anti-platelet use, %	61.6	62.0	60.5	0.804
Anti-coagulant use, %	11.9	11.2	14.0	0.487

MRI findings				
Fazekas WMH, median IQR (0-6)	2 (2-2)	2 (2-2)	2 (2-2)	0.806
Frontal WMH, median IQR (0-12)	4 (2-6)	4 (1-6)	4 (2-6)	0.485
Parietal WMH, median IQR (0-12)	2 (0-3)	2 (0-2)	2 (0-4)	0.070
Temporal WMH, median IQR (0-12)	0 (0-2)	0 (0-2)	0 (0-2)	0.381
Occipital WMH, median IQR (0-12)	0 (0-2)	0 (0-2)	1 (0-2)	0.005
Presence of lacunae, %	45.8	43.3	51.7	0.184
Presence of microbleeds, %	29.2	28.0	31.9	0.535
Temporal lobe atrophy, median IQR(0-6)	2 (1-4)	2(0-4)	2 (2-3)	0.609
Presence of major cerebral artery lesion, %	12.9	14.4	9.3	0.235

Abbreviations: SBP = systolic blood pressure; DBP = diastolic blood pressure; LDL-C = low-density lipoprotein cholesterol; HDL-C = high-density lipoprotein cholesterol; TG = triglyceride; eGFR = an estimated glomerular filtration rate; WMH = white matter hyperintensity.

*Chronic kidney disease was defined as eGFR of less than 60 ml per minute per 1.73 m² of body-surface area.

Table 2: Cognitive function of patients.

Characteristics	All (n=302)	Jugular Vein Reflex		P value
		(-) (n=211)	(+) (n=91)	
MMSE score	28.2±1.8	28.3±1.8	27.8±1.9	0.014
MoCAJ score	24.2±3.3	24.8±3.2	22.9±3.2	<0.001
Executive function (median, IQR)	3 (2-4)	3 (2-4)	3 (2-3)	0.003
Memory (median, IQR)	5 (3-7)	5 (3-7)	4 (2-5)	0.001
Orientation (median, IQR)	10 (10-10)	10 (10-10)	10 (10-10)	0.618
Language (median, IQR)	12 (11-12)	12 (11-12)	12 (11-12)	0.334
Visuospatial (median, IQR)	5 (4-5)	5 (4-5)	5 (4-5)	0.225
Attention (median, IQR)	10 (8-11)	11 (8-11)	10 (8-11)	0.077

Table 3. Associations of MMSE and MOCA-J with jugular vein reflux

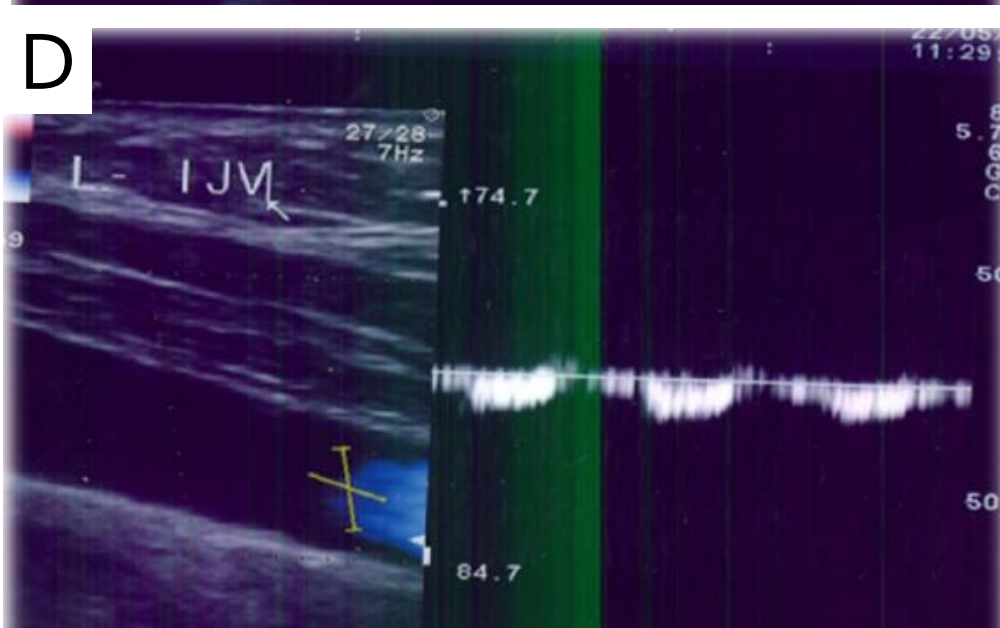
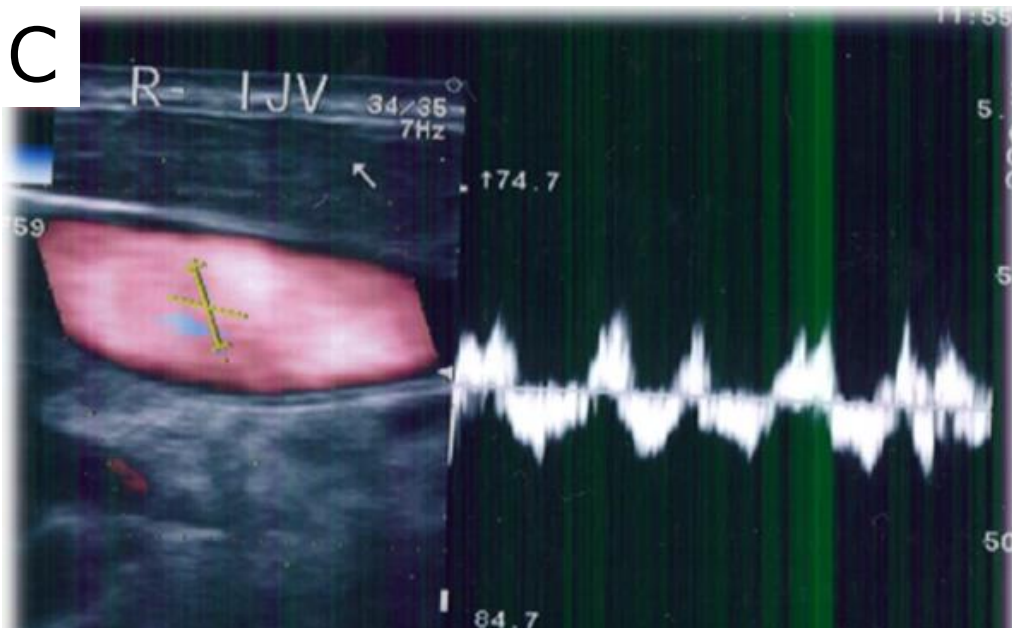
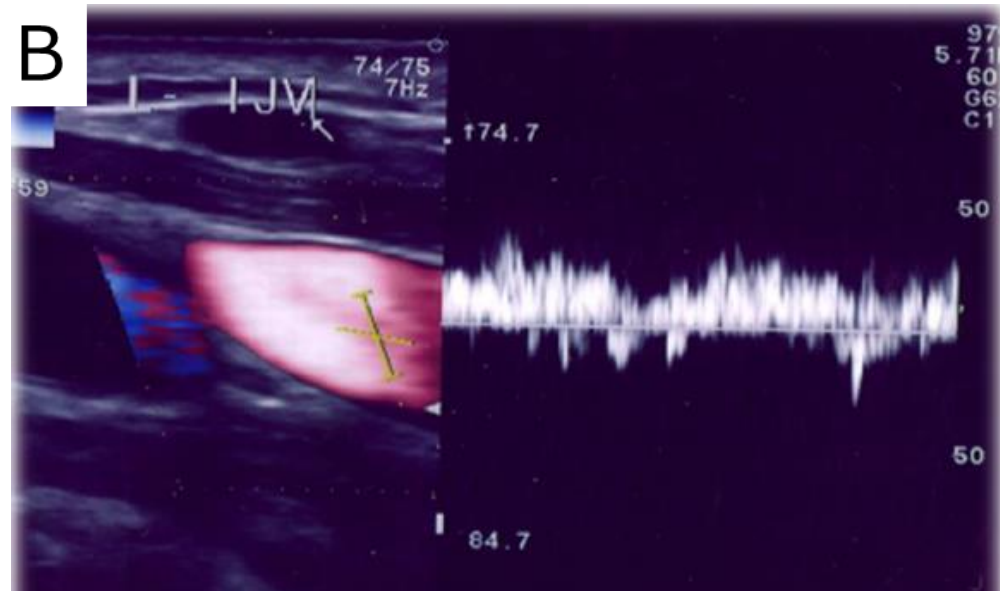
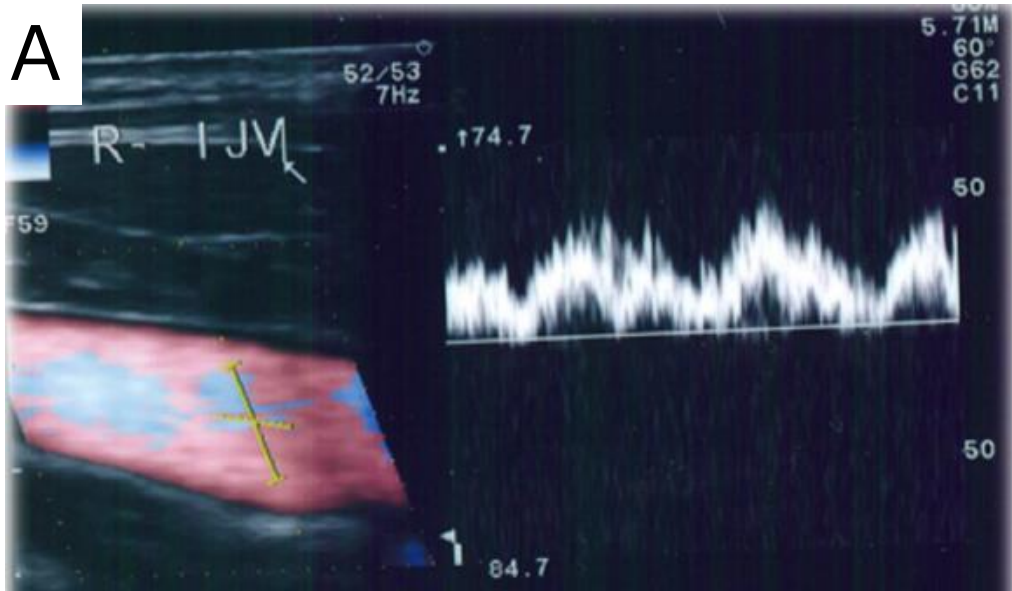
	MMSE			MoCA-J		
	IJR (-)	IJR (+)	ANOVA P	IJR (-)	IJR (+)	ANOVA P
Observed score	28.34±0.12	27.80±0.19	0.014	24.76±0.22	22.88±0.34	<0.001
Model 1	28.30±0.13	27.82±0.19	0.043	24.65±0.22	23.11±0.33	<0.001
Model 2	28.06±0.19	27.59±0.23	0.057	24.01±0.32	22.58±0.39	<0.001
Model 3	28.17±0.24	27.73±0.29	0.107	24.40±0.40	23.01±0.48	0.002

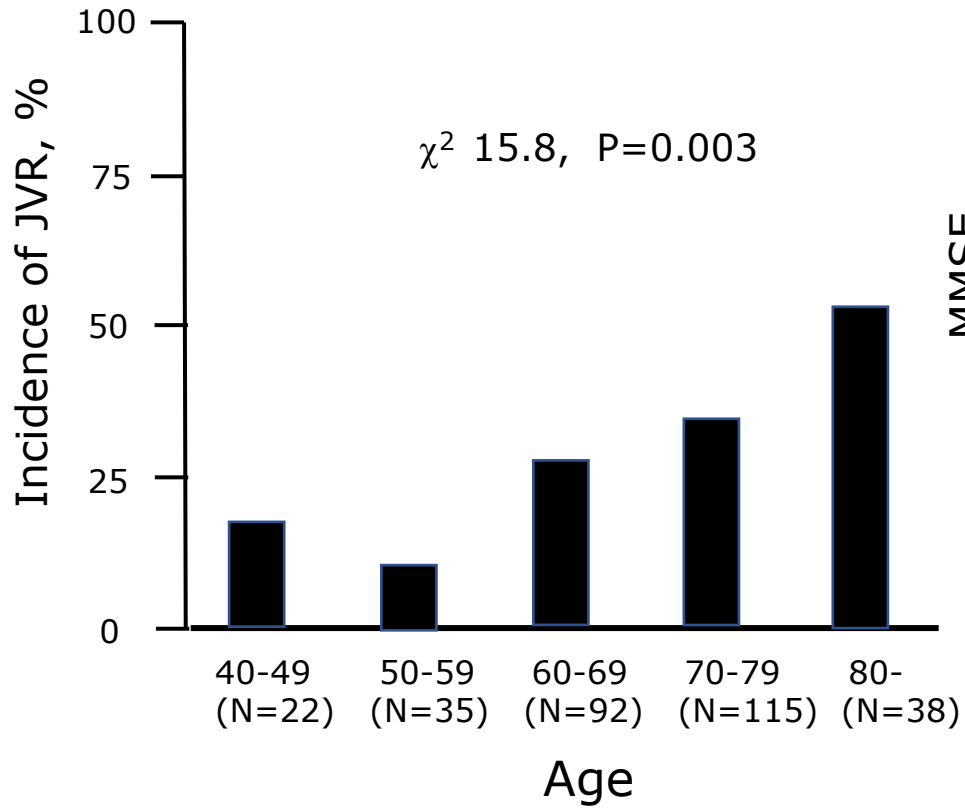
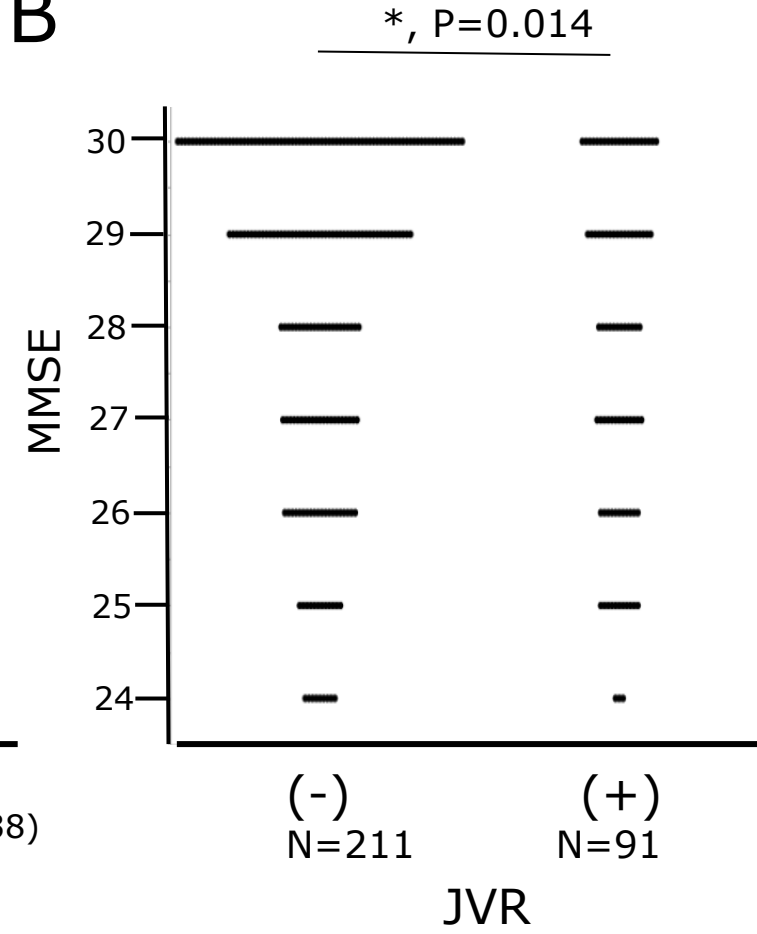
Data were shown as mean ±SE

Model 1: Adjusted for age and sex

Model 2: Adjusted for model 1 and education, DM, a history of stroke and ischemic heart disease

Model 3: Adjusted for model 2 and Total WHL score, presence of lacunae, microbleeds and medial temporal atrophy



A**B****C**