

# Use of Recommended Real-World Methods for Electronic Health Record Data Analysis Has Not Improved Over 10 Years

by

Chenyu Li<sup>1</sup>, MS

Abdulrahman M. Alsheikh<sup>2</sup>, MD, MPH

Karen A. Robinson<sup>3</sup>, PhD

Harold P. Lehmann<sup>3</sup>, MD PhD

1 Department of Biomedical Informatics, University of Pittsburgh School of Medicine, Pittsburgh, USA

2 Department of Public Health, College of Medicine, Al-Imam Muhammad ibn Saud Islamic University (IMSIU), Riyadh, Saudi Arabia

3 Division of General Internal Medicine, Johns Hopkins University School of Medicine , Baltimore, USA

## Corresponding Author:

Harold Lehmann

2024 E Monument St, Baltimore, Maryland, USA (21205)

lehmann@jhmi.edu

## Keywords:

Real-World Data, Electronic Health Records, Analytic Methods, Missing Data, Sensitivity Analysis

Word count: 4069

# ABSTRACT

## **Background and Purpose:**

To document the use of recommended Real-World Methods (RWM) in Electronic Health Record (EHR)-based analysis in biomedical research over 10 years.

## **Methods:**

Sampled-article scoping review of methods used in EHR-based biomedical research. We developed a search strategy to identify reports of biomedical research based on EHR data and systematically sampled articles from different ranges of years (epochs) between 2010 and 2019 to establish a trajectory of use of recommended RWM. Methods were classified by 3 phases of research: pre-analytic (missing data), analytic (specific methods), and post-analytic (sensitivity analysis). The primary outcome was the proportion of studies using recommended RWM within each epoch. Meta-regressions were performed to examine trends.

## **Data Synthesis:**

Five epochs were defined between 2010 and 2019 with 35 studies selected per epoch as pre-defined by a sample size calculation. Of the 175 articles reviewed, 70 (40.%) reported recommended RWM in any of the 3 phases of research. The breakdown for the most recent year in the dataset, 2019, was 14.% (95% confidence interval 2.7%, 26.%), 14.% (2.7%, 26.%), and 11.% (0.89%, 22.%), for assessing missing data, using specific methods, and performing sensitivity analysis, respectively. Only 3.4 % of studies used appropriate methods for each phase of research. Meta-regression slopes for each of the three phases were statistically 0.

## **Limitation and Conclusions:**

The underuse of recommended Real-World Methods (RWM) in EHR-based biomedical research remains a concern, with less than 50% of reports using these methods in any phase of research

over the last decade. This lack of use indicates a continued risk of bias in the EHR-based literature.

# INTRODUCTION

Use of Real-World Data (RWD) to generate Real-World Evidence (RWE) is playing an increasing role in health care decisions worldwide.[1] RWD refers to information acquired from a range of sources generated in the process of clinical care.[1] Electronic health records (EHRs), claims databases, patient registries, and other types of data repositories may be among these sources.[1,2] Turning RWD into RWE can provide useful insights into the safety, effectiveness, and value of medical products and treatments in real-world clinical settings.[3] There is a growing interest in using RWE by stakeholders, including policymakers, biomedical researchers, clinicians, and medical product developers.[4-10] Despite potential broad utility, the quality of RWE, compared with evidence generated from Randomized Controlled Trials (RCTs) — still the gold-standard of clinical research[3]—is found wanting. The methods recommended to derive RWE from RWD are intended to reduce bias (especially confounding) and to allow associational and even causal inference when using observational data. Not using the appropriate methods may result in inaccurate, biased, or even inequitable algorithms.[11] Ultimately, applying such results or algorithms in real-world practice may result in the improper treatment of patients.[12]

EHRs are essential RWD sources[1]. The 21st Century Cures Act in the U.S. was signed into law in 2016 and calls on Congress to “evaluate the potential use of real-world evidence.”[13] FDA has developed guidelines on the various uses of RWE, for example.[2,14,15] The guidelines for data analysis and RWE generation methodology remain under discussion. [1,2,14-16] The COVID-19 pandemic has surfaced the importance of RWE for addressing new diseases,[17]

while, at the same time, methodological concerns about the use of RWE continue to be raised.[18-20]

Discussions about Real World Data analysis address 3 phases: pre-analytic (missing data), analytic (specific methods), and post-analytic (sensitivity analysis). During phase 1, the pre-analytic phase (the preparation of data for analysis), addressing missing data is of special concern, because researchers have no control of what data are collected or recorded, and so traditional approaches may not apply, necessitating, for instance, greater attention to data missing not at random (MNAR).[21,22] During phase 2, the analytic phase (the statistical modeling and analysis of the data), many Analytic Real World Methods (ARWM) have been developed to analyze RWD, from the statistical, epidemiological, and computer-science communities.[19,23-25] During phase 3, the post-analytic phase, sensitivity analyses establish the robustness of conclusions to reasonable uncertainty in assumptions.[24-27] In the current paper, we call the entire set of methods in these 3 phases of research “recommended Real World Methods (recommended RWM).”

Our objective was to assess use of recommended RWM for each of the 3 phases in biomedical research assessing hypothesized associations and treatment effectiveness, based on EHR data, as documented in the peer-reviewed literature and to assess whether this use has changed over the past 10 years. We focused on this research domain, because it is the focus of much desire for using EHRs for clinical research.[28]

Because our goal was to identify proportions, we did not need to identify every relevant article published in the past 10 years as would be required for a standard systematic review. Instead, we sampled from papers identified through a thorough literature search and applied a systematic-review approach to the sample papers. We call this approach a sampled-article scoping review.

## **METHODS**

Our scoping review was based on randomly-sampled papers, from which we aimed (1) to define the articles that would be eligible for review (i.e., operationalize the intention of “papers that used EHR as the main data source for biomedical research”), (2) to operationalize the list of recommended RWM; and (3) to establish the proportion of use of the these methods for time epochs over the past 10 years. We followed the Preferred Reporting Items for Systematic Reviews and Meta-Analyses Extension for Scoping Review (PRISMA-ScR) checklist in reporting this scoping review. [29]

Given the novelty of our method, for items (1) and (2), we conducted a pilot review[30] to derive the search strategy, to refine our inclusion and exclusion criteria, to establish lists of keywords for identifying recommended RWM, to estimate inter-rater reliability, and to generate data needed for the sample-size calculation for the study.

## **Data Sources and Searches**

We sought studies that used EHR data for traditional biomedical-research aims of assessing hypothesized associations. We used an NLM-supplied search strategy for keyword “Electronic

Health Records”[31] to search PubMed. We modified the NLM supplied strategy based on results from pilot; see Supplement (Appendix Table 1 Search Strategies Details) for details. We limited the publication date to 2010/01/01-2019/12/31. The search was conducted on 2020/11/09. The detailed search strategy is presented in Appendix Table 1.

Table 1 Inclusion Exclusion Criteria

Inclusion Criteria	Exclusion Criteria *
<ul style="list-style-type: none"> <li>◆ Original Data</li> <li>◆ Published year 2010-2019</li> <li>◆ Quantitative Study                             <ul style="list-style-type: none"> <li>a) May include other data combined with the EHRs</li> <li>b) EHRs as the main source of data for analysis</li> <li>c) May be registries of EHR-sourced data</li> </ul> </li> <li>◆ Written in English</li> <li>◆ Focus on a biomedical question</li> </ul>	<ul style="list-style-type: none"> <li>◆ Physician behavior, system evaluation, health services research</li> <li>◆ EMR data only used to identify the cohort</li> <li>◆ Technology question (Database build, data collection, data transmission, IT infrastructure)</li> <li>◆ Registry (data where a human being has abstracted the data) **</li> <li>◆ Questionnaire/survey only</li> <li>◆ Methodology papers</li> <li>◆ Predictive models</li> <li>◆ Patient generated health data only</li> <li>◆ RCT data (data where a human being has abstracted the data) **</li> <li>◆ Not English</li> <li>◆ Text mining / NLP</li> <li>◆ Claim data only</li> <li>◆ Genomic data</li> <li>◆ Review papers</li> <li>◆ Qualitative data only</li> </ul>

*\*The order of the exclusions is in the order at which the pilot study surfaced these criteria*

*\*\*These sources were excluded because of the added data curation done by study staff, above curation of the source real-world EHR data.*

We developed the list of eligibility criteria iteratively, see Table 1. Because our focus was on associational and causal studies, we excluded review papers, research reports based on data from claims, genomic analysis, manually collected registries, or prospective clinical trials. Research

that was not patient focused or biomedical, such as those focused on physician behavior, information-system evaluation, health-services evaluation, and new information technology in healthcare, were also excluded. Finally, research based on unstructured and semi-structured data which needed natural language processing or text mining was excluded.

## Study Selection

We divided the 10-year period, 2010–2019 into 5 epochs: 2010–2013, 2014–2016, 2017, 2018, and 2019. We hypothesized that the proportions would rise, because of guidance that came out during the decade, specifically in the years 2013[14], 2016[32], 2018[2,15,16,33], and 2019.[34] Our goal was to get a sense of change over time, so we grouped older years together, giving more recent years finer precision. Older years had fewer articles, so we wanted our sampling to be fair to each epoch. By equalizing denominators (approximately), equal numerators made sense. We ended at 2019, as research published during the COVID-19 pandemic is likely qualitatively different.

Our statistical goal was to distinguish proportions between 2 epochs. The proportion of recommended RWM use from our pilot review was 10% (Pilot study results see Appendix Table 3, Appendix Table 4); that percentage, coupled with a desired confidence level ( $\alpha$ ) of 0.95, was used to calculate the sample size [35] for our scoping review of 35 eligible papers per epoch. We sampled 300 citations within each epoch, and then screened papers based on inclusion/exclusion criteria, until we reached 35 included papers per epoch. Random selection was performed by generating random numbers via Python (package *Random*) within the set of numbers representing all papers retrieved for an epoch.



Citations were downloaded and titles and abstracts were screened by one person (CL). We calculated the inter-rater reliability of CL and AA in the pilot study, the Cohen's Kappa was used to measure inter-rater reliability,  $\kappa=0.95$ , and the agreement between the two reviewers was 98%. If there was any uncertainty, the article was included for full-article screening, and any remaining questions were discussed among 3 of us (HL, CL, AA).

## **Data Extraction and Quality Assessment**

For each randomly selected article, we recorded study type, study design and methods used. The key outcome variable was whether recommended RWM were used for each of the three phases of research. We documented the RWM methods used in included papers, then matched these to the recommended RWMs we identified from regulator guidelines, books, and RWD meeting recommendations.[2,14,15,25,26,34,36,37]

We then scored each article for whether use of a recommended RWM was reported; details are provided in Appendix Table 2. For phase 1, studies that even simply deleted records with missing data were tagged as “Addressed missing data.” Papers that reported performing any of the following were tagged as “assessed missing data”: deletion methods with examining the sensitivity of results to the missing completely at random (MCAR) and missing at random (MAR) assumptions,[26] single imputation methods, and model based methods.[26,38]

For phase 2, we looked for words listed in the “Analytic Real World Method” section of Appendix Table. To broaden the definition of RWM as broadly as possible, any machine-learning methods combined with causal inference also were considered as RWM. [34] (See Appendix Table 2)

For phase 3, we looked for the words, “sensitivity” or “sensitivity analysis.”

Where judgment was needed, we biased in favor of ascribing use of RWM. Therefore, our final proportions are upper bounds within each epoch of the use of such methods. The full list of 35 RWM and 45 traditional methods is provided in Appendix Table 2.

Paper characteristics details (see Appendix Table 9 available in GitHub, due to size:<sup>1</sup>) were extracted by a single reader (CL), discussing ambiguous results with the senior author (HL). Beyond citation data, data collected include research design (primary objective), study design type, association type, key variables (exposure, outcome, confounding), information pertaining to the 3 phases, and use of reporting checklists (such as STROBE[39] or RECORD[40]). We also searched the supplementary materials of all the papers, looking for mentions of our target RWM terms. To supplement the manual reading of an article, we searched for keywords through text processing of the article and supplement full text, using the vocabulary assembled in the pilot.

## Data Synthesis and Analysis

The percentages of papers within each epoch using recommended RWM were calculated, along with 95% confidence intervals, and graphed over time. To assess the impact of any article or study characteristics on rates, we conducted a mixed-effects meta-regression using restricted maximum-likelihood (ReML) using *PyMARE*, in Python 3.7 using Jupyter Notebook. [41] Three

---

<sup>1</sup> [https://github.com/ChenyuL/RWE-in-EHR-Data-Analysis/blob/main/ArticleReview\\_DataCollection.csv](https://github.com/ChenyuL/RWE-in-EHR-Data-Analysis/blob/main/ArticleReview_DataCollection.csv)

meta-regressions, one for each phase of research, were done with time as the independent variable. Since the epoch lengths were unequal, we used the midpoint of each epoch in the analysis. To make the intercept meaningful, we subtracted the epoch mid-point (2015) from the epoch year values.

## **Sensitivity Analysis**

We performed sensitivity analyses for the current study by loosening our categories for phases 1 and 2, to assess the impact of changed definitions. For phase 1 missingness and phase 2 ARWM, we further calculated estimated percentages and their confidence intervals of methods used, using maximal definitions of “assessing missing data” (i.e., giving credit to articles that simply mentioned “missingness” or missing data), and phase 2 ARWM (i.e., adding methods that were not listed by the FDA but still not typical analytical methods; see Appendix Table 2), which defined Combined Missingness and Combined ARWM categories, respectively.

For phase 3, we found no other synonyms for the concept of sensitivity analysis, the third phase of research and thus had no further calculations to perform.

## **Results**

### **Study Selection Flow**

The study selection flow is summarized using a PRISMA 2020 flow diagram (Figure 1).[42]

The literature search retrieved 5885 citations (for retrieved articles’ distribution, see Appendix Figure 1) We generated a random list of article identifiers for full-text review. We screened the full text of 392 articles total to achieve our target of 35 articles for each epoch. This process

resulted in 175 total articles for analysis (for included paper list see Appendix Table 5). Reasons for, and numbers of, exclusions are given in Figure 1.

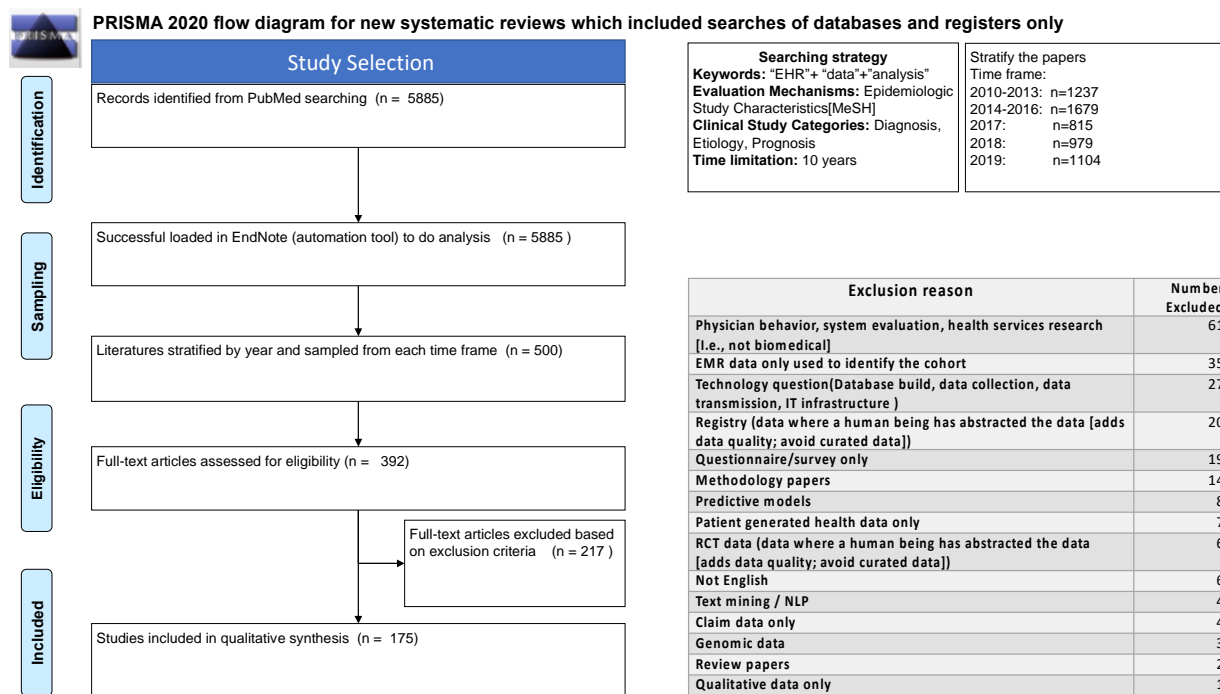


Figure 1 PRISMA Flow Diagram

The characteristics of the 175 included papers (for distribution, see Appendix Figure 2) are provided in Table 2. Of the included papers, 101 (57.7%) were conducted in the North America countries, 37 (21.%) in European countries, and 32 (18.%) in Asia (detailed country distribution see Appendix Table 6). Regarding intention, 142 of the papers aimed at association, and 33, at assessing interventions, with the proportion comparable in each epoch. In terms of design, we characterized 120 (68.6%) as retrospective cohort studies, 14 (8.0%) as retrospective cross-sectional studies, 14 (8.0%) as retrospective chart reviews, and 12 (6.9%) as prospective cohort studies. While a wide variety of statistical tools was reported, 28 (16.0%) reports did not provide such details (detailed statistics tools used see Appendix Table 7). Whereas 4 (2.%) out of 175 papers reported that the research was conducted followed the STROBE[39] check list, no other papers reported using any reporting checklist.

Table 2. Included Paper Characteristics, by Epoch

		<b>Overall*</b>	<b>2010-2013*</b>	<b>2014-2016*</b>	<b>2017*</b>	<b>2018*</b>	<b>2019*</b>
Total papers (n)		<b>175</b>	<b>35</b>	<b>35</b>	<b>35</b>	<b>35</b>	<b>35</b>
Study Design Type	<b>Retrospective chart review</b>	1 (0.6)					1 (2.9)
	<b>Cost-benefit analysis</b>	1 (0.6)					1 (2.9)
	<b>Prospective cohort study</b>	12(6.9)	4 (12)		4 (12)	1 (2.9)	3 (8.6)
	<b>Prospective controlled study</b>	1 (0.6)	1 (2.9)				
	<b>Retrospective case-control study</b>	8 (4.6)		3 (8.6)	2 (5.7)		3 (8.6)
	<b>Retrospective chart review</b>	14 (8.0)	2 (5.7)	4 (11.)	2 (5.7)	4 (11.)	2 (5.7)
	<b>Retrospective cohort study</b>	120 (69.)	24 (69.)	25 (71.)	23 (66.)	26 (74.)	22 (63.)
	<b>Retrospective cross-sectional study</b>	14 (8.0)	4 (11.)		4 (11.)	4 (11.)	2 (5.7)
	<b>Retrospective database study</b>	1 (0.6)					1 (2.9)
	<b>Retrospective review</b>	3 (1.7)		3 (8.6)			
Intention	<b>Association</b>	142 (81.)	29 (83.)	30 (86.)	28 (80.)	29 (83.)	26 (74.)
	<b>Intervention</b>	33 (19.)	6 (17.)	5 (14.)	7 (20.)	6 (17.)	9 (26.)
Continent	<b>Africa</b>	1(0.06)			1(2.9))		
	<b>Asia</b>	32(18.2)	2(5.7)	8(22.9)	5(14.3)	8(22.9)	9(25.7)
	<b>Europe</b>	37(21.1)	4(11.7)	7(20)	11(31.4)	7(20)	8(22.9)
	<b>North America</b>	101(57.7)	28(80)	20(57.1)	18(51.4)	19(54.2)	16(45.7)
	<b>Oceania</b>	3(1.7)	1(2.9)				2(5.7)
	<b>South America</b>	1 (0.6)				1(2.9)	
	<b>No</b>	94 (54.)	19 (54.)	23 (66.)	14 (40.)	20 (57.)	18 (51.)

Phase 1. Mentioned Missing Data	<b>Yes, data cleaning</b>	34 (19.)	6 (17.)	6 (17.)	11 (31.)	6 (17.)	5 (14.)
	<b>Yes, data description</b>	25 (14.)	5 (14.)	3 (8.)	6 (17.)	5 (14.)	6 (17.)
	<b>Yes, limitation</b>	20 (11.)	5 (14.)	3 (8.6)	4 (11.)	3 (8.6)	5 (14.)
	<b>Yes, no missing</b>	2 (1.1)				1 (2.9)	1 (2.9)
Phase 1. Addressed Missing Data	<b>No</b>	136 (78.)	27 (77.)	28 (80.)	22 (63.)	29 (83.)	30 (86.)
	<b>Yes, Imputation</b>	17 (9.7)	3 (8.6)	2 (5.7)	5 (14.)	4 (11.)	3 (8.6)
	<b>Yes, excluded</b>	19 (11.)	4 (11.)	5 (14.)	6 (17.)	2 (5.7)	2 (5.7)
	<b>Yes, sensitivity analysis</b>	3 (1.7)	1 (2.9)		2 (5.7)		
Phase 2. Analytic Real World Methods	<b>Yes</b>	27 (15.)	4 (11.)	7 (20.)	6 (17.)	5 (14.)	5 (14.)
	<b>No</b>	148 (85.)	31 (89.)	28 (80.)	29 (83.)	30 (86.)	30 (86.)
Phase 3. Sensitivity Analysis	<b>Yes</b>	31 (18.)	4 (11.)	10 (29.)	10 (29.)	3 (9.6)	4 (3.9)
	<b>No</b>	144 (82.)	31 (89.)	25 (71.)	25 (71.)	32 (91.)	31 (89.)
Followed Check List	<b>No</b>	171 (98.)	34 (97.)	34 (97.)	34 (97.)	35 (100)	34 (97.)
	<b>STROBE</b>	4 (2.3)	1 (2.9)	1 (2.9)	1 (2.9)		1 (2.9)

*\*Number (percent of column)*

## Analysis

Only 1 supplement added the mention of assessed missing data beyond what was found in the main articles. This paper was included in our figures and tables. Thus, for phase 1, the total percentage of articles that assessed missing data was 22%.

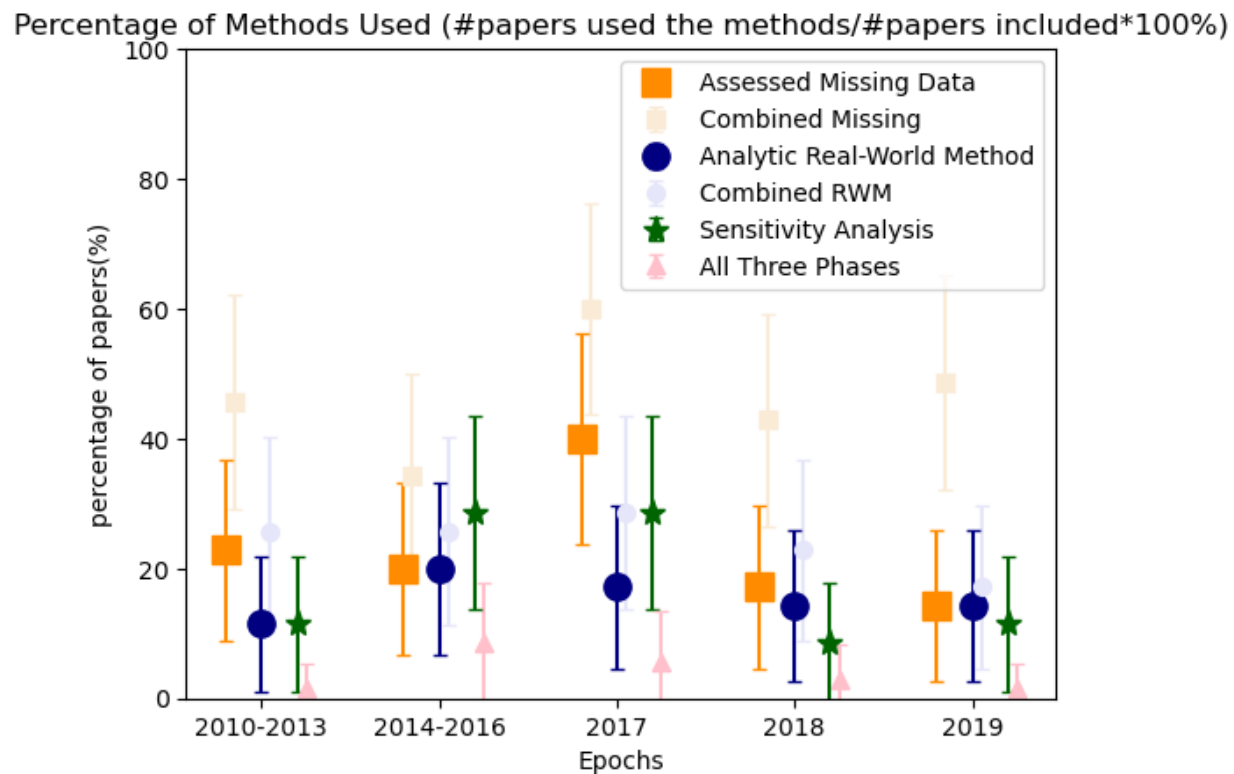


Figure 2 Estimated Percentage of Methods Used in RWD Research, by Epoch

Regarding phase 2, the number of papers that used ARWM in 2019 is 5 (14%), (with a confidence-interval upper bound of 26%). Regarding specific traditional methods, 96 (55%) papers used linear or logistic regressions, 41 papers used survival analysis, with 26 (63.%) not adjusting for baseline or time-varying confounders. [43]

Regarding phase 3, the number of papers that reported sensitivity analysis in 2019 is 4 (11%), with a confidence-interval upper bound of 22%. The range over the 10 years was 12.% to 23%.

Regarding changes over the years, the raw percentage of recommended methods in each phase, assessing missing data, ARWM, and sensitivity analysis, varied between 10% and 40%. (Figure 2 and Appendix Table 8,) While the proportions seem to rise by 2017, they return to low values in 2018 and 2019.

Only 6 papers (3.4% ), with a confidence-interval upper bounds of less than 6%, overall addressed recommended RWM in all 3 phases.

## Meta-regressions

The meta-regressions modeled the percentage of method used in each of the three phases as a function of an epoch. The coefficients for the meta-regressions are shown in Table 3. As an example, the coefficient for assessed missing data is -1%, meaning an average drop of 1 percent per epoch after the baseline intercept value of 22% (in 2015) assessing missingness. However, for all other methodology coefficients, the coefficients were close to and statistically equivalent to 0. The percentage of studies using ARWM or using sensitivity analysis did not increase over time.

Table 3. Meta-regression for Three Phases

Variable	Coefficient	SE	z-score	P value	CI Lower Bound	CI Upper Bound
<b>Assessed Missing Data over epochs</b>						
<b>Intercept</b>	22%	6.8%	3.3	0.001	8.8%	36%
<b>Epoch</b>	-1%	2.1%	-0.34	0.73	-4.7%	3.3%
<b>Combined Missingness (Sensitivity analysis of Assessed Missing) over epochs</b>						
<b>Intercept</b>	45%	8.1%	5.5	2.9e-08	29%	61%
<b>Epoch</b>	0.9%	2.6%	0.34	0.73	-4.1%	5.9%
<b>ARWM used over epochs</b>						



<b>Intercept</b>	15%	5.7%	2.6	0.01	3.5%	26%
<b>Epoch</b>	0.3%	1.7%	0.18	0.86	-3.1%	3.7%
<b>Combined ARWM use over epochs (Sensitivity analysis of ARWM use)</b>						
<b>Intercept</b>	25%	7.2%	3.5	5.4e-04	11%	39%
<b>Epoch</b>	-0.8%	2.2%	-0.38	0.70	-5.1%	3.4%
<b>Sensitivity Analysis used over epochs</b>						
<b>Intercept</b>	15%	5.7%	2.6	8.6e-03	3.8%	26%
<b>Epoch</b>	0.0%	1.6%	-0.19	0.85	-3.5%	2.9%

*\*Percentage(Factor) = Intercept + Coefficient × (Epoch center - 2015), where Factor = Assessed (Combined) Missing Data, (Combined) Real-World Method, or Performed Sensitivity Analysis*  
*CI=Confidence interval, ARWM = Analytic Real-World Methods.*

## Sensitivity Analysis

In the case that our categories were too restrictive, we “gave credit” to articles using broader criteria for missingness and RWM definitions. Figure 2 shows the estimated percentages and confidence intervals using these broader criteria (“Combined Missingness” and “Combined ARWM”). The estimates for missingness go as high as 60%, and for ARWM, as high as 29%. As in the meta-regression, there was statistically no improvement over time. Because we found no other synonyms for the concept of sensitivity analysis, we did not pursue the third phase.

## DISCUSSION

We took a novel random-sampling approach for this scoping review to assess the proportion of articles that reported methods recommended for analyzing RWD to generate RWE, over the last 10 years. We divided the RWD-analysis process into 3 phases. The number of papers reporting recommended RWM in all 3 phases was only 6 (3.4%). The proportion of studies using recommended methods within each phase has not changed substantively between 2010 and 2019, whether looking at assessing or just mentioning missing data (phase 1; between 14 and 40%),

reporting ARWM (phase 2; between 20 and 40%), or using sensitivity analysis (phase 3; between 9 and 29%). These low rates occurred despite multiple calls by methodology and funding organizations for just such methods throughout this time period.[2,14-16,32,34] While there seems to have been a peak in 2017, the later 2018 and 2019 rates of use of ARWM are no better than in 2010–2013. We biased our inclusion and tagging criteria to be as generous towards use of RWM as possible, so these percentages are probably upper bounds to the true percentages.

The low rates we documented are accompanied by a low documented rate of using methodology checklists. A recent new checklist for reporting RWE—STarT-RWE—includes the requirement to describe how missing data are addressed throughout the analysis and subgroup analyses.[44,45] Of our included papers, 81 (46.%) mentioned a missing-data issue in their data cleaning or limitation section. Of the 81 that did report on missing data, only 39 (48.%) took action beyond mentioning the issue. While statisticians often impute missing data to make maximal use of data that are available, this imputation presumes that missing data are missing at random. However, missed EHR data is generally missing not at random. [21] [46] Methods for missing not at random (MNAR) are more complex and difficult, yet appropriate.[5,47] None of the studies discussed this key concern of EHR data. There are many weaknesses in using EHR data that go beyond the statistical approaches listed in this paper. For instance, improving data quality and accuracy would be paramount, before attempting advanced analytic methods.[48,49] We submit that attention to missing data, ARWM, and sensitivity analysis comprise the minimum of what is needed.

The percentage of papers that used ARWM is low, and remained so for the entire time period, with less than a quarter doing so (although the confidence interval goes as high as 37%). Taking the case of a single, relatively common analysis—survival curves—only 37% used the appropriate method for RWD[26,43]. In addition, the meta regressions suggest that the assessment of missing data, the use of, or the deployment of sensitivity analysis had not changed over 10 years. One could argue that many of the methods listed in Supplementary Table 2 are too recent to expect to appear in our sample. However, “bias,” “adjusting,” “confounding” and “non-adherence” are concerns in epidemiology and evidence-based medicine for decades.[50,51]

The low percentage of use of recommended RWM has important implications for the results of the studies: Improper attention to missing data and to selection bias within EHR data means that results from one dataset cannot be applied to other populations in a predictable (and safe) way.[52-54] Improper analytic methods limit generalizability. Lack of sensitivity analysis or other robustness approaches may hide the fragility of the conclusions to contexts outside the RWD dataset.

While we used the FDA meeting[1,2,14-16] as a rich list of modern methods, the sentiment of the need for specific methods to deal with RWD is well established. A standard textbook of Epidemiology calls for bias assessment in “secondary data analysis” (using the definition of RWD). [36] The National Academy of Medicine raises bias issues and results calibration in their 2013 Observational Studies in a Learning Health System workshop summary.[55] The International Society for Pharmacoeconomics and Outcomes Research (ISPOR) and the International Society for Pharmacoepidemiology (ISPE) in 2017 developed recommendations

for “Good practices for real-world data studies of treatment and/or comparative effectiveness.”

In their discussion, they write:

Threats to the validity of RWD studies of the effects of interventions include unmeasured confounding, measurement error, missing data, model misspecification, selection bias, and fraud. Scholarly journals publish many observational studies, often without requiring the authors to report a thorough exploration of these threats to validity. Unless the authors identify these threats and provide guidance about how they could bias study results, consumers of observational studies must trust the study authors to conduct the study with integrity and report it transparently.[37]

The low percentages we have documented also have important implications for the credibility of EHR-based research. Use of EHRs as a source of data for biomedical research has increased linearly over the past 10 years, rising from 228 biomedical-research articles published based on such data in 2010 to 1104 in 2019 (see Appendix Figure 1). Certainly, such use will only grow, as multi-center efforts, like The National Patient-Centered Clinical Research Network (PCORnet) [56], Observational Health Data Sciences and Informatics (OHDSI)[57] and National COVID Cohort Collaborative (N3C)[58] mature, and as the research community becomes more comfortable with the use of these data. This increase in attention means that it is even more important that proper methods are used for analyzing these data. Furthermore, if the larger corpus of EHR-based research is deemed non-generalizable, biased, and fragile, then the efforts by these organizations may be impugned by the very audience they aim to convince.

One could argue that our study ended too early to see a change a research methodology as a results of guidelines published in 2010s. After all, a 2011 study determined that translating health research takes 17 years.[59] Our results, then, serve as a baseline for RWD research to monitor changes in methodology to satisfy already-published research guidelines.

Because of the complexity of RWD, it is not appropriate to use traditional data processing methods with these large datasets.[60-62] In order to ensure internal and external validity in EHR-based research, researchers must determine whether the data are accurately extracted, adequately adjusted, correctly analyzed and cogently presented.[26] To analyze RWD properly requires multidisciplinary teams comprising clinicians, informaticians, epidemiologists, biostatisticians and data scientists.

The percentage of published studies using recommended RWM has not risen over the past 10 years, despite guidance being issued in multiple years by a variety of sources. Alternative approaches are needed. OHDSI has developed tools to conduct real-world evidence generation.[63] However, at any one institution, a small group of investigators may lack the ability to implement such a sophisticated toolset. Beyond promoting the use of RWM through reporting checklists [64], we suggest a third alternative is to provide analytic decision support, where the analyst receives suggestions from the software in the process of developing an analysis. Examples could include libraries of methods (articles), appropriately tagged; libraries of software code that implements those methods; and metrics to assess successful implementation of the methods. Using the Agency for Healthcare Research and Quality (AHRQ)

principle,[65] we suggest that such decision support could do for RWE what EHR-based decision support has done for guideline adherence.[1,66]

## LIMITATIONS

There are several limitations in this research. First, the main data collection was conducted by a single interpreter, which could inject subjectivity into the selection of articles and extraction of significant data. To minimize this potential bias, a uniform approach was adhered to throughout the review process, we had a pilot study that included two reviewers collected data that had a high inter-rater reliability, and a senior reviewer (HL) was consulted in cases of doubt. In addition, the included papers were randomly selected per epoch, providing a representative sample of the literature. Notwithstanding these precautions, it is likely that some important publications were overlooked, or that the sole reviewer impacted the interpretation of the data. Future research may choose to employ several reviewers to boost the validity and applicability of their findings.

Second, we did not include all eligible articles, because our goal was to assess the proportion of such articles using appropriate methods; random sampling is the basis of much biomedical research, our sampling method ensured a representative subset of the literature, allowing for a sound interpretation of the prevalence of recommended RWM usage in the RWD analysis process over the past decade.

Third, we did not include articles from 2020 or later because the COVID-19 pandemic was such a disruption to research practice. Although removing articles published in 2020 or later may limit

the scope of our analysis, we made this decision because the COVID-19 pandemic has produced an unprecedented disturbance in research practice. Concerns have also been raised over the quality of research published during the epidemic, as several papers were hurried to publication and lacked sufficient peer review.[67-69] To ensure that our analysis included a more typical sample of studies conducted under regular research conditions, we omitted articles published in 2020 or later. We note, however, that this omission may limit the applicability of our results to more recent studies on RWE approaches. Future research may include analysis of more recent papers and evaluate any modifications to the use of approved RWE procedures considering the pandemic.

Fourth, some EHR-based studies were excluded, such as implementation studies and studies of physician behavior. The analyses of such data are often even more complicated than the more traditional studies of association or medical-intervention effectiveness.[70,71] Certainly, a review of such studies along the lines of the current article would provide a view into how EHR data are used in those contexts as well. We excluded NLP because use of such methods requires informatics expertise. Of 392 articles reviewed, only 4 were rejected because of NLP.

Last but not least, it is possible that not all methodological details were included in the Methods sections which would have led to low observed percentage. However, we reviewed all supplement sections and found only a single additional mention.

## CONCLUSION

The proportion of published clinical research papers based on EHR data using recommended real-world evidence methods is low and has not increased significantly over a 10-year interval.

The low percentages we documented may reduce the credibility of EHR-based research, if the larger corpus of EHR-based research is deemed non-generalizable, biased, and fragile. New approaches are needed to promote the use of these methods to improve the validity of studies, to reduce biases, to improve RWE quality, and to better support healthcare decisions. Not doing so risks another 10 years of no improvement in the derivation of evidence from RWD.



## **FUNDING STATEMENT**

This research received no specific grant from any funding agency in the public, commercial or not-for-profit sectors.

## **COMPETING INTERESTS STATEMENT**

Authors have no competing interests to declare for this research.

## **CONTRIBUTORSHIP STATEMENT**

HL, CL, and KR designed the study. CL conducted the study including data curation, analysis and interpretation. AA contributed to data curation as a second reviewer. HL reviewed data analysis and interpretation. CL drafted the manuscript that reviewed and revised by HL and KR. implementation.

## **ACKNOWLEDGEMENTS**

We gratefully acknowledge the help of Claire Twose, MLIS, Associate Director for Research Services at Johns Hopkins University, in refining the search strategy and reviewing search implementation. Chenyu Li is supported by University of Pittsburgh School of Medicine Department of Biomedical Informatics Dean's scholarship.

## **Data Availability Statement**

The analytic data used for this scoping review was collected during the reviewing process. The retrieved EHR based articles, reviewed article details, and analytic code are available on GitHub at <https://github.com/ChenyuL/RWE-in-EHR-Data-Analysis>. These resources are provided to facilitate replication and further investigation of the findings presented in this manuscript.

## REFERENCES

1. FDA. Real-World Evidence. Sec 2020/03/23 2020. <https://www.fda.gov/science-research/science-and-research-special-topics/real-world-evidence>. 2021/12/20
2. FDA. Framework for FDA's Real-World Evidence Program. Sec Dec. 2018 2018. <https://www.fda.gov/media/120060/download>.
3. Sherman RE, Anderson SA, Dal Pan GJ, et al. Real-World Evidence - What Is It and What Can It Tell Us? *N Engl J Med* 2016;**375**(23):2293-97 doi: 10.1056/NEJMs1609216published Online First: 2016/12/14].
4. Bartlett VL, Dhruva SS, Shah ND, Ryan P, Ross JS. Feasibility of Using Real-World Data to Replicate Clinical Trial Evidence. *JAMA Netw Open* 2019;**2**(10):e1912869 doi: 10.1001/jamanetworkopen.2019.12869published Online First: 2019/10/10].
5. Baumfeld Andre E, Reynolds R, Caubel P, Azoulay L, Dreyer NA. Trial designs using real-world data: The changing landscape of the regulatory approval process. *Pharmacoepidemiol Drug Saf* 2019 doi: 10.1002/pds.4932published Online First: 2019/12/12].
6. Blonde L, Khunti K, Harris SB, Meizinger C, Skolnik NS. Interpretation and Impact of Real-World Clinical Data for the Practicing Clinician. *Adv Ther* 2018;**35**(11):1763-74 doi: 10.1007/s12325-018-0805-ypublished Online First: 2018/10/26].
7. Corrigan-Curay J, Sacks L, Woodcock J. Real-World Evidence and Real-World Data for Evaluating Drug Safety and Effectiveness. *JAMA* 2018;**320**(9):867-68 doi: 10.1001/jama.2018.10136published Online First: 2018/08/15].
8. Franklin JM, Schneeweiss S. When and How Can Real World Data Analyses Substitute for Randomized Controlled Trials? *Clin Pharmacol Ther* 2017;**102**(6):924-33 doi: 10.1002/cpt.857published Online First: 2017/08/25].
9. Makady A, de Boer A, Hillege H, Klungel O, Goettsch W. What Is Real-World Data? A Review of Definitions Based on Literature and Stakeholder Interviews. *Value Health* 2017;**20**(7):858-65 doi: 10.1016/j.jval.2017.03.008published Online First: 2017/07/18].
10. Miksad RA, Abernethy AP. Harnessing the Power of Real-World Evidence (RWE): A Checklist to Ensure Regulatory-Grade Data Quality. *Clin Pharmacol Ther* 2018;**103**(2):202-05 doi: 10.1002/cpt.946published Online First: 2017/12/08].
11. Mehrabi N, Morstatter F, Saxena N, Lerman K, Galstyan A. A Survey on Bias and Fairness in Machine Learning. arXiv pre-print server 2019 doi: None arxiv:1908.09635published Online First.
12. Griffith GJ, Morris TT, Tudball MJ, et al. Collider bias undermines our understanding of COVID-19 disease risk and severity. *Nature Communications* 2020;**11**(1) doi: 10.1038/s41467-020-19478-2published Online First.
13. Congress t. 21st Century Cures Act Sec 2016. <https://www.congress.gov/bill/114th-congress/house-bill/34>.
14. FDA-2011-D-0057. Best Practices for Conducting and Reporting Pharmacoepidemiologic Safety Studies Using Electronic Healthcare Data. Sec May 2013. <https://www.fda.gov/regulatory-information/search-fda-guidance-documents/best-practices-conducting-and-reporting-pharmacoepidemiologic-safety-studies-using-electronic>.

15. FDA-2016-D-1224. Use of Electronic Health Record Data in Clinical Investigations Guidance for Industry. Sec [Regulation] July 2018 2018. <https://www.fda.gov/regulatory-information/search-fda-guidance-documents/use-electronic-health-record-data-clinical-investigations-guidance-industry>.
16. FDA. Submitting Documents Using Real-World Data and Real-World Evidence to FDA for Drugs and Biologics Guidance for Industry. Sec 2019. <https://www.fda.gov/regulatory-information/search-fda-guidance-documents/submitting-documents-using-real-world-data-and-real-world-evidence-fda-drugs-and-biologics-guidance>.
17. Naidoo P, Bouharati C, Rambiritch V, et al. Real-world evidence and product development: Opportunities, challenges and risk mitigation. *Wiener klinische Wochenschrift* 2021;**133**(15-16):840-46 doi: 10.1007/s00508-021-01851-wpublished Online First.
18. Khosla S, White R, Medina J, et al. Real world evidence (RWE) – a disruptive innovation or the quiet evolution of medical evidence generation? *F1000Research* 2018;**7**:111 doi: 10.12688/f1000research.13585.2published Online First.
19. Crown WH. Real-World Evidence, Causal Inference, and Machine Learning. *Value in Health* 2019;**22**(5):587-92 doi: 10.1016/j.jval.2019.03.001published Online First.
20. National Academies of Sciences EM, Division HM, Policy BHS, et al. *Examining the Impact of Real-World Evidence on Medical Product Development: Proceedings of a Workshop Series*: National Academies Press, 2019.9780309488297;
21. Haneuse S, Arterburn D, Daniels MJ. Assessing Missing Data Assumptions in EHR-Based Studies: A Complex and Underappreciated Task. *JAMA Network Open* 2021;**4**(2):e210184 doi: 10.1001/jamanetworkopen.2021.0184published Online First.
22. Moore L, Hanley JA, Lavoie A, Turgeon A. Evaluating the validity of multiple imputation for missing physiological data in the national trauma data bank. *J Emerg Trauma Shock* 2009;**2**(2):73-9 doi: 10.4103/0974-2700.44774published Online First: 2009/06/30].
23. Yerrapragada G, Siadimas A, Babaeian A, Sharma V, O'Neill TJ. Machine Learning to Predict Tamoxifen Nonadherence Among US Commercially Insured Patients With Metastatic Breast Cancer. *JCO Clinical Cancer Informatics* 2021(5):814-25 doi: 10.1200/cci.20.00102published Online First.
24. Fang Y, Wang H, He W. A Statistical Roadmap for Journey from Real-World Data to Real-World Evidence. *Therapeutic Innovation & Regulatory Science* 2020;**54**(4):749-57 doi: 10.1007/s43441-019-00008-2published Online First.
25. Sturmer T, Wang T, Golightly YM, Keil A, Lund JL, Jonsson Funk M. Methodological considerations when analysing and interpreting real-world data. *Rheumatology (Oxford)* 2020;**59**(1):14-25 doi: 10.1093/rheumatology/kez320published Online First: 2019/12/14].
26. MIT-Critical-Data. *Secondary Analysis of Electronic Health Records*, 2016.ISBN-13: 978-3-319-43742-2; 10.1007/978-3-319-43742-2
27. Schneeweiss S. Sensitivity analysis and external adjustment for unmeasured confounders in epidemiologic database studies of therapeutics. *Pharmacoepidemiology and Drug Safety* 2006;**15**(5):291-303 doi: <https://doi.org/10.1002/pds.1200>published Online First.
28. Casey JA, Schwartz BS, Stewart WF, Adler NE. Using Electronic Health Records for Population Health Research: A Review of Methods and Applications. *Annu Rev Public Health* 2016;**37**:61-81 doi: 10.1146/annurev-publhealth-032315-021353published Online First: 2015/12/17].

29. PRISMA Extension for Scoping Reviews (PRISMA-ScR): Checklist and Explanation. *Annals of Internal Medicine* 2018;**169**(7):467-73 doi: 10.7326/m18-0850 %m 30178033published Online First.
30. Li C. ANALYTIC METHODS USED IN REAL WORLD DATA BASED BIOMEDICAL RESEARCH-A SCOPING REVIEW. Johns Hopkins University, 2020.
31. NLM. MEDLINE / PubMed Search Strategy & Electronic Health Record Information Resources  
. Sec 2020/03/23 2020. [https://www.nlm.nih.gov/services/queries/ehr\\_details.html](https://www.nlm.nih.gov/services/queries/ehr_details.html).
32. Public Policy Committee ISoP. Guidelines for good pharmacoepidemiology practice (GPP). *Pharmacoepidemiol Drug Saf* 2016;**25**(1):2-10 doi: 10.1002/pds.3891published Online First: 2015/11/06].
33. FDA. FDA's Sentinel Initiative. Sec 2008. <https://www.fda.gov/safety/fdas-sentinel-initiative>.
34. Workshop DU. Developing Real-World Data and Evidence to Support Regulatory Decision-Making. Sec August 11th, 2020 2019. <https://www.fda.gov/drugs/regulatory-science-research-and-education/developing-real-world-data-and-evidence-support-regulatory-decision-making-10032019-10032019>  
<https://healthpolicy.duke.edu/events/developing-real-world-data-and-evidence-support-regulatory-decision-making>.
35. Pourhoseingholi MA, Vahedi M, Rahimzadeh M. Sample size calculation in medical studies. *Gastroenterol Hepatol Bed Bench* 2013;**6**(1):14-17 Online First.
36. Rothman KJ, Greenland S, Lash TL. *Modern epidemiology*: Wolters Kluwer Health/Lippincott Williams & Wilkins Philadelphia, 2008
37. Berger ML, Sox H, Willke RJ, et al. Good practices for real-world data studies of treatment and/or comparative effectiveness: recommendations from the joint ISPOR-ISPE Special Task Force on real-world evidence in health care decision making. *Value in Health* 2017;**20**(8):1003-08 Online First.
38. Little RJ, Rubin DB. *Statistical analysis with missing data*: John Wiley & Sons, 2019.0470526793;
39. von Elm E, Altman DG, Egger M, Pocock SJ, Gøtzsche PC, Vandenbroucke JP. The Strengthening the Reporting of Observational Studies in Epidemiology (STROBE) Statement: Guidelines for Reporting Observational Studies. *Annals of Internal Medicine* 2007;**147**(8):573-77 doi: 10.7326/0003-4819-147-8-200710160-00010published Online First.
40. Benchimol EI, Smeeth L, Guttman A, et al. The REporting of studies Conducted using Observational Routinely-collected health Data (RECORD) statement. *PLoS medicine* 2015;**12**(10):e1001885 Online First.
41. PyMARE: Python Meta-Analysis & Regression Engine [program], 2020.
42. Moher D, Liberati A, Tetzlaff J, Altman DG, The PG. Preferred Reporting Items for Systematic Reviews and Meta-Analyses: The PRISMA Statement. *PLOS Medicine* 2009;**6**(7):e1000097 doi: 10.1371/journal.pmed.1000097published Online First.
43. Collaboration TCR-wEfvICC. Developing a framework for incorporating real-world evidence into drug funding decisions: CanREValue Collaboration Methods Working Group Progress Report on Real World Survival Data: Canada, 2020

44. Bayley KB, Belnap T, Savitz L, Masica AL, Shah N, Fleming NS. Challenges in using electronic health record data for CER: experience of 4 learning organizations and solutions applied. *Med Care* 2013;**51**(8 Suppl 3):S80-6 doi: 10.1097/MLR.0b013e31829b1d48published Online First: 2013/06/19].
45. Cowie MR, Blomster JI, Curtis LH, et al. Electronic health records to facilitate clinical research. *Clin Res Cardiol* 2017;**106**(1):1-9 doi: 10.1007/s00392-016-1025-6published Online First: 2016/08/26].
46. Beaulieu-Jones BK, Lavage DR, Snyder JW, Moore JH, Pendergrass SA, Bauer CR. Characterizing and Managing Missing Structured Data in Electronic Health Records: Data Analysis. *JMIR Medical Informatics* 2018;**6**(1):e11 doi: 10.2196/medinform.8960published Online First.
47. Olson MS. Developing an integrated strategy for evidence generation. *J Comp Eff Res* 2018;**7**(1):5-9 doi: 10.2217/cer-2017-0073published Online First: 2017/10/21].
48. Yadav S, Kazanji N, KC N, et al. Comparison of accuracy of physical examination findings in initial progress notes between paper charts and a newly implemented electronic health record. *Journal of the American Medical Informatics Association* 2017;**24**(1):140-44 Online First.
49. Pfaff ER, Girvin AT, Gabriel DL, et al. Synergies between centralized and federated approaches to data quality: a report from the national COVID cohort collaborative. *Journal of the American Medical Informatics Association* 2022;**29**(4):609-18 Online First.
50. Delgado-Rodríguez M, Llorca J. Bias. *J Epidemiol Community Health* 2004;**58**(8):635-41 doi: 10.1136/jech.2003.008466published Online First: 2004/07/15].
51. Sackett DL. Bias in analytic research. *J Chronic Dis* 1979;**32**(1-2):51-63 doi: 10.1016/0021-9681(79)90012-2published Online First: 1979/01/01].
52. Naemi A, Schmidt T, Mansourvar M, Ebrahimi A, Wiil UK. Quantifying the impact of addressing data challenges in prediction of length of stay. *BMC Med Inform Decis Mak* 2021;**21**(1):298 doi: 10.1186/s12911-021-01660-1published Online First: 2021/11/10].
53. Schuemie MJ, Cepeda MS, Suchard MA, et al. How Confident Are We about Observational Findings in Healthcare: A Benchmark Study. *Harv Data Sci Rev* 2020;**2**(1) doi: 10.1162/99608f92.147cc28epublished Online First: 2020/12/29].
54. Chan PY, Zhao Y, Lim S, Perlman SE, McVeigh KH. Using Calibration to Reduce Measurement Error in Prevalence Estimates Based on Electronic Health Records. *Prev Chronic Dis* 2018;**15**:E155 doi: 10.5888/pcd15.180371published Online First: 2018/12/24].
55. on Value R, Care S-DH. *Observational Studies in a Learning Health System: Workshop Summary*. 2013 Online First.
56. Forrest CB, McTigue KM, Hernandez AF, et al. PCORnet® 2020: current state, accomplishments, and future directions. *Journal of Clinical Epidemiology* 2021;**129**:60-67 doi: 10.1016/j.jclinepi.2020.09.036published Online First.
57. OHDSI. *The Book of OHDSI: Observational Health Data Sciences and Informatics*: OHDSI, 2019.9781088855195;
58. Haendel MA, Chute CG, Bennett TD, et al. The National COVID Cohort Collaborative (N3C): Rationale, design, infrastructure, and deployment. *Journal of the American Medical Informatics Association* 2021;**28**(3):427-43 doi: 10.1093/jamia/ocaa196published Online First.

59. Morris ZS, Wooding S, Grant J. The answer is 17 years, what is the question: understanding time lags in translational research. *J R Soc Med* 2011;**104**(12):510-20 doi: 10.1258/jrsm.2011.110180published Online First: 2011/12/20].
60. Madigan D, Stang PE, Berlin JA, et al. A Systematic Statistical Approach to Evaluating Evidence from Observational Studies. *Annual Review of Statistics and Its Application* 2014;**1**(1):11-39 doi: 10.1146/annurev-statistics-022513-115645published Online First.
61. Hersh WR, Weiner MG, Embi PJ, et al. Caveats for the Use of Operational Electronic Health Record Data in Comparative Effectiveness Research. *Medical Care* 2013;**51**(Supplement 8Sup):S30-S37 doi: 10.1097/mlr.0b013e31829b1dbdpublished Online First.
62. Maclure M, Schneeweiss S. Causation of Bias: The Episcopo. *Epidemiology* 2001;**12**(1):114-22 Online First.
63. Ryan. P DJ. *The Book of OHDSI. The book of OHDSI -Observational Health Data Sciences and Informatics, 2020*
64. Wang SV, Pinheiro S, Hua W, et al. STaRT-RWE: structured template for planning and reporting on the implementation of real world evidence studies. *BMJ* 2021;**372**:m4856 doi: 10.1136/bmj.m4856published Online First: 2021/01/14].
65. AHRQ. Overview of CDS Five Rights Sec. <https://digital.ahrq.gov/ahrq-funded-projects/current-health-it-priorities/clinical-decision-support-cds/chapter-1-approaching-clinical-decision/section-2-overview-cds-five-rights>. 2021/08/04
66. ISPE. RWE for Regulatory Decision Making. Sec 2021. <https://www.pharmacoepi.org/strategic-initiatives/rwe-for-regulatory-decision-making/>. 10/18/2021
67. Alexander PE, Debono VB, Mammen MJ, et al. COVID-19 coronavirus research has overall low methodological quality thus far: case in point for chloroquine/hydroxychloroquine. *Journal of Clinical Epidemiology* 2020;**123**:120-26 doi: 10.1016/j.jclinepi.2020.04.016published Online First.
68. Celi LA, Charpignon M-L, Ebner DK, et al. Gender Balance and Readability of COVID-19 Scientific Publishing: A Quantitative Analysis of 90,000 Preprint Manuscripts: Cold Spring Harbor Laboratory, 2021.
69. Dobler CC. Poor quality research and clinical practice during COVID-19. *Breathe* 2020;**16**(2):200112 doi: 10.1183/20734735.0112-2020published Online First.
70. Chan W-K, Saravanan A, Manikam J, Goh K-L, Mahadeva S. Appointment waiting times and education level influence the quality of bowel preparation in adult patients undergoing colonoscopy. *BMC gastroenterology* 2011;**11**:1-9 Online First.
71. Babushkina EA, Belokopytova LV, Grachev AM, Meko DM, Vaganov EA. Variation of the hydrological regime of Bele-Shira closed basin in Southern Siberia and its reflection in the radial growth of *Larix sibirica*. *Regional Environmental Change* 2017;**17**:1725-37 Online First.

# Appendix and Supplement

## Table of Contents

<b>SEARCH STRATEGY DETAILS (COMBINED)</b> .....	<b>1</b>
APPENDIX TABLE 1 SEARCH STRATEGIES	1
APPENDIX TABLE 2 REAL WORLD METHODS LIST	6
<b>PILOT STUDY RESULTS</b> .....	<b>8</b>
APPENDIX TABLE 3 NUMBER OF ARTICLES RETRIEVED, BY YEAR	8
APPENDIX TABLE 4 PILOT STUDY ESTIMATED PROPORTIONS AND CONFIDENCE INTERVAL OF METHODS USED IN EHRs BASED RESEARCH	8
<b>MAIN STUDY RESULTS</b> .....	<b>9</b>
APPENDIX FIGURE 1: PUBLISHED PAPERS EXTRACTED FROM PUBMED, BY YEAR	9
APPENDIX FIGURE 2 INCLUDED PAPERS, BY YEAR	9
APPENDIX TABLE 5 REVIEWED PAPER LIST	10
APPENDIX TABLE 6 MAIN STUDY INCLUDED PAPER COUNTRIES DETAILS, BY EPOCH	19
APPENDIX TABLE 7 MAIN STUDY INCLUDED PAPERS STATISTICS TOOLS USED, BY EPOCH	20
APPENDIX TABLE 8 PERCENTAGE OF KEY METHODOLOGIES, BY EPOCH	20
APPENDIX TABLE 9 ARTICLE REVIEW DETAILS	22

## Search Strategy Details (combined)

The following table provides details on the pilot study and the main study search strategies, showing the broader search (all journals) used in the main study.

### Appendix Table 1 Search Strategies

Keywords	Details: Pilot Study <sup>1</sup>	Details: Final Study (Differences from Pilot)
Electronic Health Record (#1)	((health information exchange [tw] OR hie [tw] OR rhio [tw] OR regional health information organization [tw] OR hl7 [tw]OR health level seven [tw] OR unified medical language system [majr] OR umls [tw] OR loinc [tw] OR rxnorm [tw] OR snomed [tw] OR icd9 cm [ti] OR icd 9 cm [ti] OR icd10 [ti] OR icd 10 [ti] OR metathesaurus [tw] OR patient card [tw] OR patient cards [tw] OR health card [tw] OR health cards [tw] OR electronic health data [tw] OR personal health data [tw] OR personal health record [tw] OR personal health records [tw] OR Health Records, Personal [Majr] OR Health Record, Personal [Majr] OR ehealth [tw] OR e-health [tw] OR medical informatics application [mh] OR medical informatics applications [mh] OR medical records system, computerized [mh] OR medical records systems, computerized [mh] OR computerized patient medical records [tw] OR automated medical record system [tw] OR automated medical record systems [tw] OR automated medical records system [tw] OR automated medical records systems [tw] OR computerized medical record [tw] OR computerized medical records [tw] OR computerized patient records [tw] OR computerized patient record [tw] OR	(health information exchange [tw] OR hie [tw] OR rhio [tw] OR regional health information organization [tw] OR hl7 [tw] OR health level seven [tw] OR unified medical language system [majr] OR umls [tw] OR loinc [tw] OR rxnorm [tw] OR snomed [tw] OR icd9 cm [ti] OR icd 9 cm [ti] OR icd10 [ti] OR icd 10 [ti] OR metathesaurus [tw] OR patient card [tw] OR patient cards [tw] OR health card [tw] OR health cards [tw] OR electronic health data [tw] OR personal health data [tw] OR personal health record [tw] OR personal health records [tw] OR Health Records, Personal [Majr] OR Health Record, Personal [Majr] OR ehealth [tw] OR e-health [tw] OR medical informatics application [mh] OR medical informatics applications [mh] OR medical records system, computerized [mh] OR medical records systems, computerized [mh] OR computerized patient medical records [tw] OR automated medical record system [tw] OR automated medical record systems [tw] OR automated medical records system [tw] OR automated medical records systems [tw] OR computerized medical record [tw] OR computerized medical records [tw] OR computerized patient records [tw] OR computerized patient record [tw] OR computerized patient medical record [tw] OR



Keywords	Details: Pilot Study <sup>1</sup>	Details: Final Study (Differences from Pilot)
	computerized patient medical record [tw] OR electronic health record [tw] OR electronic health records [tw] OR Electronic Health Record [Majr] OR Electronic Health Records [Majr] OR electronic patient record [tw] OR electronic patient records [tw] OR electronic medical record [tw] OR electronic medical records [tw] OR electronic healthcare records [tw] OR electronic healthcare record [tw] OR electronic health care record [tw] OR electronic health care records [tw] OR archives [majr] OR ehr [tw] OR ehrs [tw] OR phr [tw] OR phrs [tw] OR emr [tw] OR emrs [tw] OR Health Information Systems [Majr] OR health information interoperability[mh] OR health information interoperability[tw]) AND (medical record [ti] OR medical records [mh] OR medical records [ti] OR patient record [ti] OR patient records [ti] OR patient health record [ti] OR patient health records [ti] OR patient identification system [mh] OR patient identification systems [mh] OR Patient Outcome Assessment[Majr] OR Patient Discharge Summaries[Majr] OR healthcare record [ti] OR healthcare records [ti] OR health care record [ti] OR health care records [ti] OR health record [ti] OR health records [ti] OR hospital information system [tw] OR hospital information systems [tw] OR umae [ti] OR attitude to computers [mh] OR medical informatics [ti] OR Information Technology[mh] OR Information Technology[tw])) OR ((medical records systems, computerized [majr] OR medical records systems, computerized [mh] OR computerized patient medical record [tw] OR computerized patient medical records [tw] OR automated medical record system [tw] OR	electronic health record [tw] OR electronic health records [tw] OR Electronic Health Record [Majr] OR Electronic Health Records [Majr] OR electronic patient record [tw] OR electronic patient records [tw] OR electronic medical record [tw] OR electronic medical records [tw] OR electronic healthcare records [tw] OR electronic healthcare record [tw] OR electronic health care record [tw] OR electronic health care records [tw] OR archives [majr] OR ehr [tw] OR ehrs [tw] OR phr [tw] OR phrs [tw] OR emr [tw] OR emrs [tw] OR Health Information Systems [Majr] OR health information interoperability[mh] OR health information interoperability[tw]) AND (medical record [ti] OR medical records [mh] OR medical records [ti] OR patient record [ti] OR patient records [ti] OR patient health record [ti] OR patient health records [ti] OR patient identification system [mh] OR patient identification systems [mh] OR Patient Outcome Assessment[Majr] OR Patient Discharge Summaries[Majr] OR healthcare record [ti] OR healthcare records [ti] OR health care record [ti] OR health care records [ti] OR health record [ti] OR health records [ti] OR hospital information system [tw] OR hospital information systems [tw] OR umae [ti] OR attitude to computers [mh] OR medical informatics [ti] OR Information Technology[mh] OR Information Technology[tw])) OR ((medical records systems, computerized [majr] OR medical records systems, computerized [mh] OR computerized patient medical record [tw] OR computerized patient medical records[tw]OR automated medical record system [tw] OR automated medical record systems [tw] OR

Keywords	Details: Pilot Study <sup>1</sup>	Details: Final Study (Differences from Pilot)
	automated medical record systems [tw] OR automated medical records system [tw] OR automated medical records systems [tw] OR computerized medical record [tw] OR computerized medical records [tw] OR computerized patient records [tw] OR computerized patient record [tw] OR patient generated health data[mh] OR patient generated health data[tw] OR electronic health record [tw] OR electronic health records [tw] OR electronic patient record [tw] OR electronic patient records [tw] OR electronic medical record [tw] OR electronic medical records [tw] OR electronic healthcare records [tw] OR electronic healthcare record [tw] OR electronic health care record [tw] OR electronic health care records [tw] OR unified medical language system [majr] OR unified medical language system [tw] OR umls [tw] OR loinc [tw] OR rxnorm [tw] OR snomed [tw] OR icd9 cm [ti] OR icd 9 cm [ti] OR icd10 [ti] OR icd 10 [ti] OR metathesaurus [tw] OR ehr [tw] OR ehrr [tw] OR phr [tw] OR phrs [tw] OR emr [tw] OR emrs [tw] OR meaningful use [tiab] OR meaningful use [tw] OR Meaningful Use [Majr]) AND (j ahima [ta] OR j am med inform assoc [ta] OR amia annu symp proc [ta] OR health data manag [ta] OR int j med inform [ta] OR yearb med inform [ta] OR telemed j e health [ta] OR stud health technol inform [ta]) <sup>2</sup>	automated medical records system [tw] OR automated medical records systems [tw] OR computerized medical record [tw] OR computerized medical records [tw] OR computerized patient records [tw] OR computerized patient record [tw] OR patient generated health data[mh] OR patient generated health data[tw] OR electronic health record [tw] OR electronic health records [tw] OR electronic patient record [tw] OR electronic patient records [tw] OR electronic medical record [tw] OR electronic medical records [tw] OR electronic healthcare records [tw] OR electronic healthcare record [tw] OR electronic health care record [tw] OR electronic health care records [tw] OR unified medical language system [majr] OR unified medical language system [tw] OR umls [tw] OR loinc [tw] OR rxnorm [tw] OR snomed [tw] OR icd9 cm [ti] OR icd 9 cm [ti] OR icd10 [ti] OR icd 10 [ti] OR metathesaurus [tw] OR ehr [tw] OR ehrr [tw] OR phr [tw] OR phrs [tw] OR emr [tw] OR emrs [tw] OR meaningful use [tiab] OR meaningful use [tw] OR Meaningful Use [Majr])
Biomedical Quantitative Study (#2)	“Epidemiologic Study Characteristics” [All Fields] AND “data” [All Fields] AND “analy*” [All Fields] NOT “Review” [Publication Type] NOT “Systematic Review” [Publication Type] <sup>3</sup>	“Epidemiologic Study Characteristics” [All Fields] AND “data” [All Fields] AND “analy*” [All Fields] NOT “Review” [Publication Type] NOT “Systematic Review” [Publication Type] <sup>3</sup>
Clinical Filter (#3)	(sensitiv*[Title/Abstract] OR sensitivity and specificity[MeSH Terms] OR	(sensitiv*[Title/Abstract] OR sensitivity and specificity[MeSH Terms] OR

Keywords	Details: Pilot Study <sup>1</sup>	Details: Final Study (Differences from Pilot)
	diagnose[Title/Abstract] OR diagnosed[Title/Abstract] OR diagnoses[Title/Abstract] OR diagnosing[Title/Abstract] OR diagnosis[Title/Abstract] OR diagnostic[Title/Abstract] OR diagnosis[MeSH:noexp] OR diagnostic * [MeSH:noexp] OR diagnosis,differential[MeSH:noexp] OR diagnosis[Subheading:noexp]) OR (risk*[Title/Abstract] OR risk*[MeSH:noexp] OR risk *[MeSH:noexp] OR cohort studies[MeSH Terms] OR group[Text Word] OR groups[Text Word] OR grouped [Text Word]) OR (incidence[MeSH:noexp] OR mortality[MeSH Terms] OR follow up studies[MeSH:noexp] OR prognos*[Text Word] OR predict*[Text Word] OR course*[Text Word]) <sup>4</sup>	diagnose[Title/Abstract] OR diagnosed[Title/Abstract] OR diagnoses[Title/Abstract] OR diagnosing[Title/Abstract] OR diagnosis[Title/Abstract] OR diagnostic[Title/Abstract] OR diagnosis[MeSH:noexp] OR diagnostic * [MeSH:noexp] OR diagnosis,differential[MeSH:noexp] OR diagnosis[Subheading:noexp]) OR (risk*[Title/Abstract] OR risk*[MeSH:noexp] OR risk *[MeSH:noexp] OR cohort studies[MeSH Terms] OR group[Text Word] OR groups[Text Word] OR grouped [Text Word]) OR (incidence[MeSH:noexp] OR mortality[MeSH Terms] OR follow up studies[MeSH:noexp] OR prognos*[Text Word] OR predict*[Text Word] OR course*[Text Word]) <sup>4</sup>
From 2010/01/01- 2019/12/31 (#4)	"2010/01/01"[PDat] : "2019/12/31"[PDat]	"2010/01/01"[PDat] : "2019/12/31"[PDat]
	(#1) AND (#2) AND (#3) AND (#4)	(#1) AND (#2) AND (#3) AND (#4)

<sup>1</sup>MEDLINE / PubMed Search Strategy & Electronic Health Record Information Resources

[https://www.nlm.nih.gov/services/queries/ehr\\_details.html](https://www.nlm.nih.gov/services/queries/ehr_details.html)

<sup>2</sup>This highlighted section, limited the search to specific journals, was deleted in the search strategy that was used in the main paper.

<sup>3</sup> Works about types and formulations of studies used in epidemiological research. Year introduced: 2018 (1998)

<https://www.ncbi.nlm.nih.gov/mesh/68016020>

<sup>4</sup>Clinical Queries using Research Methodology Filters <https://pubmed.ncbi.nlm.nih.gov/help/#clinical-study-category-filters>

During the pilot review, we identified several issues with that search strategy, for instance it was limited to 8 informatics journals, while its terms for “Biomedical Quantitative Study” were too broad<sup>2</sup>. In the main study, we removed the journal restrictions on NLM-supplied Electronic Health Records search strategy, details see Appendix Table 1. “Biomedical Research” was operationalized as the PubMed Publication Type, “Study Characteristics.” To limit the result to quantitative biomedical studies with data analytic methods, we added keywords "data"[All Fields] AND "analy\*"[All Fields] to the search. We used PubMed clinical filters to focus on diagnosis, etiology, prognosis studies, the broad definition for searching diagnosis, etiology, and prognosis has sensitivity of 90% , 93% , and 90% , respectively.<sup>3</sup>

The explanation provided in Appendix 2 of our manuscript refers to the process we used to categorize Real-World Methods (RWM) and Traditional Methods for dealing with missing data in EHR-based biomedical research.

Specifically, when we reviewed the articles, we looked for any mention of a method being used for RWD analysis. If a method was specifically mentioned in the context of RWD analysis, we considered it to be an RWM and placed it on the left side of the table in Appendix 2.

<sup>2</sup> NLM. Epidemiologic Study Characteristics. <https://www.ncbi.nlm.nih.gov/mesh/68016020>. Published 2020. Accessed 2020/11/09.

<sup>3</sup> PubMed. PubMed Clinical Queries <https://www.ncbi.nlm.nih.gov/pubmed/clinical>. Published 2020. Accessed 2020/11/09, 2020.

However, if a method was not explicitly mentioned in the context of RWD analysis, we considered it to be a Traditional Method and placed it on the right side of the table.

For example, in the case of logistic regression, while it is often used in RWD analysis, it can also be used in traditional data analysis. Therefore, if it was not explicitly mentioned in the context of RWD analysis, we considered it to be a Traditional Method and placed it on the right side of the table.

It is important to note that our categorization of methods as RWM or Traditional Methods was based on our interpretation of the articles and the information provided by the authors. It is possible that other researchers may categorize these methods differently, based on their own interpretation of the literature or other criteria.

Overall, the purpose of Appendix 2 was to provide a comprehensive list of methods used in EHR-based biomedical research, categorized according to whether they were RWM or Traditional Methods. This information can be used by researchers to select appropriate methods for their own studies and to compare the methods used in different studies.

## **Appendix Table 2 Real World Methods List**

\*Methods for sensitivity analysis

Phase	Real World Methods (RWM)	Traditional Methods
Missingness	Missing Cause Missing Data Missingness Multiple Imputation	
Analytic Real World Method	Active Comparator Adjusting Bayesian Twin Regression Bias Causal Inference Confounding DAG/ADMG Depletion of Susceptible Difference in Difference Doubly Robust Methods Empirical Calibration G-Estimation High-dimensional Proxy Adjustment Identification Immortal Time Instrumental Variable Inverse Probability Latent Class Growth Modeling (LCGM) (Manski's) Partial Identification Marginal Structure Models Negative Control Non-adherence Perturbation Variable Propensity Score Pseudo Treatment Regression Discontinuity Reverse Causation Targeted Maximum Likelihood Estimation Trend in Trend Trimming	Adaboost * C-Statistics Chi-Square Automatic Interaction Detector Cox proportional hazard models Decision Curve Analysis * Descriptive statistics Difference-in-difference analysis Discriminant function analysis Empirical Bayes estimates* Gamma Regression Generalized Estimating Equations * Group-based multitrajectory analysis * Growth mixture modelling * Hierarchic cluster analysis * Hierarchical generalized linear model * Hypothesis test Individual growth curve (IGC) analysis* Intention-to-Treat Analysis Interrupted time series analysis Kaplan-Meier method Latent Class Analysis * LASSO regression * Life-table analysis Linear mixed effect model Linear Regression Logistic Regression Long Short Term Memory (LSTM) Network Mixed -effects Regression Model Multilevel logistic regression * Multilevel quantile regression Multiple correspondence analysis Multiple logistic regression Multivariable generalized linear mixed model Multivariable negative binomial regression Multivariate analysis of variance (MANOVA) Multivariate linear regression Multivariate logistic regression One-way analysis of variance (ANOVA) Optimal Classification Trees * Poisson regression * Post-hoc analysis Random Forest * Recursive partitioning (RP) model * Retrospective chart review * Statistic Testing Subgroup Analysis
Sensitivity Analysis	Sensitivity Analysis	

## Pilot Study Results

We sampled 300 papers in order to gain a stable estimate of our target proportions

### Appendix Table 3 Number of articles retrieved, by year

Year	2010-2013	2014-2016	2017	2018	2019
Total papers	350	341	157	189	91
Proportion of total papers	31.0%	30.2%	13.9%	16.8%	8.1%
Sampled for full-text reading	100	50	50	50	50

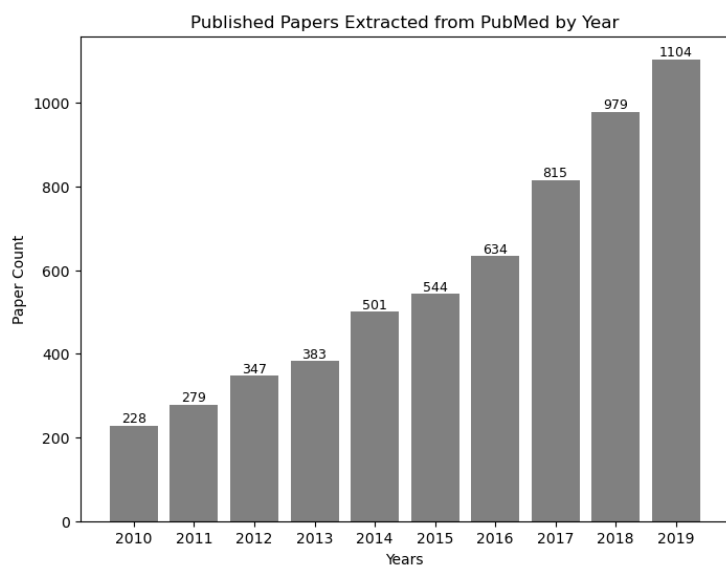
### Appendix Table 2 Pilot Study Estimated Proportions and Confidence Interval of Methods used in EHRs Based Research

Phase	2010-2013	2014-2016	2017	2018	2019
Real-World_Method	0.04 (0, 0.11)	0.08(0, 0.24)	0.03(0, 0.1)	0.21(0, 0.43)	0.11(0, 0.26)
Sensitivity_Analysis	0.19(0.04,0.34)	0.25(0.01, 0.5)	0.28(0.07, 0.48)	0.07(0, 0.21)	0.22(0.03, 0.41)
Handled_Missing_Data	0.12 (0, 0.24)	0.17(0, 0.38)	0.17(0, 0.34)	0.21(0, 0.43)	0.22(0.03, 0.41)

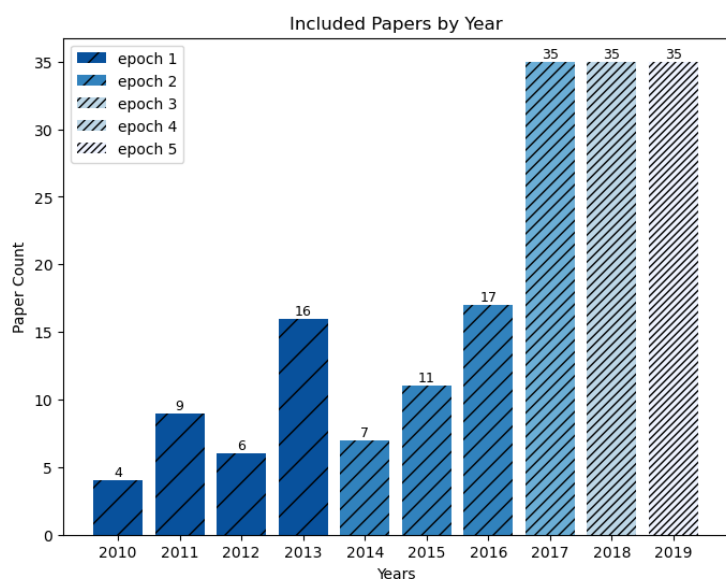
In the row Real-World\_ method, the average of proportion was 0.094. We used 0.10 to inform the sample size of the main paper.

## Main Study Results

### Appendix Figure 1: Published Papers Extracted from PubMed, by Year



### Appendix Figure 1 Included Papers, by Year





## Appendix Table 5 Reviewed Paper List<sup>4</sup>

Epoch	No.	Pubmed_ID	Year	Article_Name	First_Author
1	1	31167871	2019	Trends in the incidence of testing for vitamin D deficiency in primary care in the UK: a retrospective analysis of The Health Improvement Network (THIN), 2005-2015	Crowe, F. L.
		31306445	2019	An interactive nomogram to predict healthcare-associated infections in ICU patients: A multicenter study in GuiZhou Province, China	Zhang, M.
	3	31881945	2019	Sex differences in 10-year ischemic cardiovascular disease risk prediction in Chinese patients with prediabetes and type 2 diabetes	Yang, L.
	4	31332959	2019	Clinical outcomes of external beam radiotherapy in patients with localized prostate cancer: Does dose escalation matter?	Lee, C. C.
	5	31210654	2019	Preoperative Pulmonary Function Test Results Are Not Associated With Postoperative Intubation in Children Undergoing Posterior Spinal Fusion for Scoliosis: A Retrospective Observational Study	Burjek, N. E.
	6	31262381	2019	Factors related to omalizumab resistance in chronic spontaneous urticaria	Magen, E.
	7	30357329	2019	Risk analysis of antimicrobial resistance in outpatient urinary tract infections of young healthy adults	Brosh-Nissimov, T.
	8	30782738	2019	Protocol for a prospective observational study to develop a frailty index for use in perioperative and critical care	Darvall, J. N.
	9	31050078	2019	Impact of antibiotic treatment duration on outcomes in older men with suspected urinary tract infection: Retrospective cohort study	Ahmed, H.
	10	30576649	2019	Long-term outcomes of endoscopic resection and metachronous cancer after endoscopic resection for adenocarcinoma of the esophagogastric junction in Japan	Abe, S.
	11	30476614	2019	Trends and Outcomes of Pediatric Vascular Injuries in the United States: An Analysis of the National Trauma Data Bank	Eslami, M. H.
	12	31353082	2019	Volume-outcome relationship in severe operative trauma surgery: A retrospective cohort study using a Japanese nationwide administrative database	Endo, H.
	13	31048085	2019	Reduction in Nephrotoxic Antimicrobial Exposure Decreases Associated Acute Kidney Injury in Pediatric Hematopoietic Stem Cell Transplant Patients	Benoit, S. W.
	14	31506197	2019	Detecting Atrial Fibrillation in the Emergency Department in Patients with Cardiac Implantable Electronic Devices	Pugh, M.
	15	30555003	2019	Using the emergency department to investigate smoking in young adults	Kantrow, S. P.
	16	30618280	2019	Opiate Exposure and Predictors of Increased Opiate Use After Ureteroscopy	Kang, C.

<sup>4</sup> Detailed annotation and curated data see, <https://github.com/ChenyuL/RWE-in-EHR-Data-Analysis>

Epoch	No.	Pubmed_ID	Year	Article_Name	First_Author
	17	30953972	2019	Treatment patterns and overall survival in metastatic urothelial carcinoma in a real-world, US setting	Simeone, J. C.
	18	31025592	2019	Low-dose aspirin and risk of upper/lower gastrointestinal bleeding by bleed severity: a cohort study with nested case-control analysis using primary care electronic health records from the United Kingdom	García-Rodríguez, L. A.
	19	31824165	2019	Elevated Triglycerides ( $\geq 150$ mg/dL) and High Triglycerides (200-499 mg/dL) Are Significant Predictors of New Heart Failure Diagnosis: A Real-World Analysis of High-Risk Statin-Treated Patients	Toth, P. P.
	20	30947777	2019	Abdominal and Pelvic Vascular Injury: A National Trauma Data Bank Study	Talbot, E.
	21	31537841	2019	Statin use and the risk of colorectal cancer in a population-based electronic health records study	Ibáñez-Sanz, G.
	22	30198104	2019	Development and future deployment of a 5 years allograft survival model for kidney transplantation	DuBay, D. A.
	23	31578115	2019	Renal trauma: a 6-year retrospective review from a level 1 trauma center in Denmark	Maibom, S. L.
	24	30853444	2019	Neurosyphilis: Concordance between cerebrospinal fluid analysis and subsequent antibiotic strategy for patients undergoing evaluation of a diagnosis of neurosyphilis	Smibert, O. C.
	25	31306041	2019	Use of subcutaneous and intravenous trastuzumab: real-world experience from three hospitals in Sweden	Valachis, A.
	26	30933911	2019	Does an enhanced recovery after surgery protocol change costs and outcomes of single-level lumbar microdiscectomy?	arf±k√βf±
	27	30741444	2019	Effect of Registered Dietitian Nutritionist Order-Writing Privileges on Enteral Nutrition Administration in Selected Intensive Care Units	Arney, B. D.
	28	30968545	2019	Who Gives Birth in the Water? A Retrospective Cohort Study of Intended versus Completed Waterbirths	Sidebottom, A. C.
	29	31418803	2019	Hospital Utilization Among Rural Children Served by Pediatric Neurology Telemedicine Clinics	Dayal, P.
	30	31409405	2019	Liver function changes after transarterial chemoembolization in US hepatocellular carcinoma patients: the LiverT study	Miksad, R. A.
	31	29953662	2019	Association between the frequency of bedwetting and late preterm birth in children aged $\geq 5$ years	Nishizaki, N.
	32	30595024	2019	Evolution of Dementia Related to the Use of Alcohol in the French Nationwide Discharge Summary Database Between 2007 and 2017	Rochoy, M.
	33	30078659	2019	Performance of the CURB-65 Score in Predicting Critical Care Interventions in Patients Admitted With Community-Acquired Pneumonia	Ilg, A.
	34	30600530	2019	Antibiotic prescription in emergency dental service in Zagreb, Croatia - a retrospective cohort study	Bjelovucic, R.
	35	31722101	2019	Improved Breastfeeding Outcomes Following an On-site Support Intervention in an Academic Family Medicine Center	Sanchez, A.

Epoch	No.	Pubmed_ID	Year	Article_Name	First_Author
2	1	30064842	2018	Total psoas area predicts medium-term mortality after lower limb revascularization	Juszczak, M. T.
	2	29317808	2018	Clinical utility of the revised cardiac risk index in older Chinese patients with known coronary artery disease	Che, L.
	3	29501610	2018	Comparative Effectiveness of Initial Treatment at Trauma Center vs Neurosurgery-Capable Non-Trauma Center for Severe, Isolated Head Injury	Kaufman, E. J.
	4	29859388	2018	Changes in alcohol use associated with changes in HIV disease severity over time: A national longitudinal study in the Veterans Aging Cohort	Williams, E. C.
	5	30152644	2018	Childhood Physical and Sexual Abuse Predicts Suicide Risk in a Large Cohort of Veterans	Koola, M. M.
	6	29264632	2018	Social deprivation modifies the association between incident foot ulceration and mortality in type 1 and type 2 diabetes: a longitudinal study of a primary-care cohort	Anderson, S. G.
	7	29959781	2018	Persistent sex disparities in implantable cardioverter-defibrillator therapy	Johnson, A. E.
	8	30086666	2018	Association Between Positive Cultures During Admission and 1-Year Mortality in Patients With Cancer Receiving Perioperative Intensive Care	Chiang, H. Y.
	9	27311740	2018	Frequent hospital admissions in Singapore: clinical risk factors and impact of socioeconomic status	Low, L. L.
	10	30086257	2018	Perioperative factors and pressure ulcer development in postoperative ICU patients: a retrospective review	Kumta, N.
	11	29436391	2018	Associations Between Pediatric Palliative Care Consultation and End-of-Life Preparation at an Academic Medical Center: A Retrospective EHR Analysis	Stutz, M.
	12	30100717	2018	The use of a standardized order set reduces systemic corticosteroid dose and length of stay for individuals hospitalized with acute exacerbations of COPD: a cohort study	Gulati, S.
	13	29539612	2018	Mortality and Stroke Recurrence in a Rehabilitation Cohort of Patients with Cerebral Infarcts and Chagas Disease	Montanaro, V. V. A.
	14	28988204	2018	Effect of bisphosphonates on knee replacement surgery	Neogi, T.
	15	29474095	2018	Cost Savings from Reducing Pain Through the Delivery of Integrative Medicine Program to Hospitalized Patients	Dusek, J. A.
	16	29129272	2018	Incidence and risk factors for infection in spine surgery: A prospective multicenter study of 1764 instrumented spinal procedures	Gu, W.
	17	29936983	2018	The association between angioembolization and splenic salvage for isolated splenic injuries	Rosenberg, G. M.
	18	29253844	2018	Factors Associated with Chronic Kidney Disease and Their Clinical Utility in Primary Care Clinics in a Multi-Ethnic Southeast Asian Population	Lew, Q. L. J.
	19	29894495	2018	Assessment of the relationship between diabetes treatment intensification and quality measure performance using electronic medical records	Arnold, R. J. G.
	20	30192850	2018	Fracture risk in type 2 diabetic patients: A clinical prediction tool based on a large population-based cohort	Martinez-
	21	29976189	2018	New recommendation and coverage of low-dose computed tomography for lung cancer screening: uptake has increased but is still low	Li, J.

Epoch	No.	Pubmed_ID	Year	Article_Name	First_Author
	22	29564621	2018	Addition of doxycycline to ciprofloxacin for infection prophylaxis during autologous stem cell transplants for multiple myeloma	Sivik, J. M.
	23	30458814	2018	Incidence and predictors of surgical site infection after ORIF in calcaneus fractures, a retrospective cohort study	Wang, H.
	24	29054778	2018	Validation of Prognostic Models to Predict Early Mortality in Spontaneous Intracerebral Hemorrhage: A Cross-Sectional Evaluation of a Singapore Stroke Database	Han, J. X.
	25	30343594	2018	Which Objective Parameters Are Associated with a Positive Urine Culture in the Setting of Ureteral Calculi: The Ureteral Calculi Urinary Culture Calculator	Rohloff, M
	26	30075972	2018	Rising mortality in patients with combined burn and trauma	Grigorian, A.
	27	30395043	2018	Trends in Pediatric Emergency Department Utilization for Mild Traumatic Brain Injury Before and After Legislation	Singichetti, B.
	28	29729123	2018	Trends in hospitalization rates for psoriasis flares since the introduction of biologics: a time series in France between 2005 and 2015	Polivka, L.
	29	29516393	2018	Gestational weight gain among minority adolescents predicts term birth weight	Ekambaram, M.
	30	30012446	2018	Current Experience and Midterm Follow-up of Immediate-Access Arteriovenous Grafts	Wagner, J. K.
	31	29147805	2018	Can clinical practice indicator relating to long-acting benzodiazepine use in the elderly be easily generated in a hospital setting?	Kadri, B.
	32	29502187	2018	Epidemiology and correlates of osteoporotic fractures among type 2 diabetic patients	Goldshstein, I.
	33	29352592	2018	Development and validation of an ICD-10-based disability predictive index for patients admitted to hospitals with trauma	Wada, T.
	34	29807717	2018	Shoulder adhesive capsulitis: epidemiology and predictors of surgery	Kingston, K.
	35	29669697	2018	The prevalence of sarcopaenia in a vascular surgical patient cohort and its impact on outcome	Heard, R.
3	1	28472213	2017	Association Between Thyroid Disease and Uveitis: Results From the Pacific Ocular Inflammation Study	Borkar, D. S.
	2	28992868	2017	Definitive Diagnosis of Children Presenting to A Pediatric Emergency Department With Fever and Extremity Pain	Vardiabasis, N. V.
	3	28181629	2017	Comorbidity and polypharmacy in people with dementia: insights from a large, population-based cross-sectional analysis of primary care data	Clague, F.
	4	28319547	2017	Methylprednisolone Therapy in Acute Traumatic Spinal Cord Injury: Analysis of a Regional Spinal Cord Model Systems Database	Sunshine, J. E.
	5	28759474	2017	Quick Sequential Organ Failure Assessment and Systemic Inflammatory Response Syndrome Criteria as Predictors of Critical Care Intervention Among Patients With Suspected Infection	Moskowitz, A.
	6	28273396	2017	Statin Use Correlates with Reduced Risk of Pyogenic Liver Abscess: A Population-Based Case-Control Study	Liao, K. F.
	7	28196660	2017	Comparison of outcomes in severe pediatric trauma at adult trauma centers with different trauma case volumes	Miyata, S.

Epoch	No.	Pubmed_ID	Year	Article_Name	First_Author
8	28248798	2017	Evaluation of the Relationship Between Serum Uric Acid Levels and Cardiovascular Events in Patients With Gout: A Retrospective Analysis Using Electronic Medical Record Data	Essex, M. N.	
9	28727517	2017	Comparative Toxicity and Effectiveness of Trastuzumab-Based Chemotherapy Regimens in Older Women With Early-Stage Breast Cancer	Reeder-Hayes, K. E.	
10	28807194	2017	The impact of Glasgow Coma Scale-age prognosis score on geriatric traumatic brain injury outcomes	Khan, M.	
11	28951401	2017	Evolving landscape of stroke prevention in atrial fibrillation within the UK between 2012 and 2016: a cross-sectional analysis study using CPRD	Lacoin, L.	
12	29157318	2017	Effect of Clinical Variables on the Volume of Blood Collected for Blood Cultures in an Adult Patient Population	Jones, R. L.	
13	28017629	2017	Identifying Risk of Future Asthma Attacks Using UK Medical Record Data: A Respiratory Effectiveness Group Initiative	Blakey, J. D.	
14	29040555	2017	The effectiveness of varenicline versus nicotine replacement therapy on long-term smoking cessation in primary care: a prospective cohort study of electronic medical records	Taylor, G. M. J.	
15	28762529	2017	The impact of statin use on the efficacy of abiraterone acetate in patients with castration-resistant prostate cancer	Harshman, L. C.	
16	27492450	2017	Obesity in Older People With and Without Conditions Associated With Weight Loss: Follow-up of 955,000 Primary Care Patients	Bowman, K.	
17	27056934	2017	Anticoagulation Control in Swiss Primary Care: Time in Therapeutic Range Percentages Exceed Benchmarks of Phase III Trials	Djalali, S.	
18	28029234	2017	Temporal Trends of Venous Thromboembolism Risk Before and After Diagnosis of Giant Cell Arteritis	Unizony, S.	
19	28595292	2017	Neonatal Outcomes Associated With Placental Abruption	Downes, K. L.	
20	28489503	2017	Does Prehospital Time Influence Clinical Outcomes in Severe Trauma Patients?: A Cross Sectional Study	Kim, J.	
21	27377576	2017	Blood glucose on admission and mortality in patients with venous thromboembolism	Akirov, A.	
22	28122760	2017	The unclosing premature mortality gap in gout: a general population-based study	Fisher, M. C.	
23	29021267	2017	Association of Neighborhood Socioeconomic Context With Participation in Cardiac Rehabilitation	Bachmann, J. M.	
24	28495862	2017	The Diagnosis-Wide Landscape of Hospital-Acquired AKI	Jannot, A. S.	
25	27534520	2017	Impact of deprivation, ethnicity, and insulin pump therapy on developmental trajectories of diabetes control in COB type 1 diabetes	Viner, R. M.	
26	28417028	2017	General Anaesthesia Protocols for Patients Undergoing Electroconvulsive Therapy: Retrospective analysis of 504 sessions over a five-year period at a tertiary care hospital in Oman	Narayanan, A.	
27	28279995	2017	What proportion of patients with psychosis is willing to take part in research? A mental health electronic case register analysis	Patel, R.	
28	28490326	2017	The clinical epidemiology of fatigue in newly diagnosed heart failure	Williams, B. A.	

Epoch	No.	Pubmed_ID	Year	Article_Name	First_Author
	29	28658199	2017	Tacrolimus Trough Concentration Variability and Disparities in African American Kidney Transplantation	Taber, D. J.
	30	29381975	2017	Comparison of intraoperative basal fluid requirements in distal pancreatectomy: Laparotomy vs. laparoscopy: A retrospective cohort study	Han, J. W.
	31	28886989	2017	Factors Associated with Contralateral Deep Venous Thrombosis after Iliocaval Venous Stenting	Khairy, S. A.
	32	28117221	2017	Comparative Effectiveness and Resource Usage in Patients Receiving First-line Taxane-based Chemotherapy for Stage IV Non-Small-cell Lung Cancer in a US Community Oncology Setting	Weiss, J.
	33	28551054	2017	The effect of anatomic location of injury on mortality risk in a resource-poor setting	Eaton, J.
	34	28396932	2017	Comparison of analgesia with lumbar epidurals and lumbar plexus nerve blocks in patients receiving multimodal analgesics following primary total hip arthroplasty: a retrospective analysis	Harvey, N. R.
	35	28433642	2017	Predicting Nonmuscle Invasive Bladder Cancer Recurrence and Progression in a United States Population	Ravvaz, K.
4	1	27423366	2016	Hospital Readmissions of Stroke Patients with Percutaneous Endoscopic Gastrostomy Feeding Tubes	Wilmskoetter, J.
	2	25791153	2015	Initial serum lactate level is associated with inpatient mortality in patients with community-acquired pneumonia	Gwak, M. H.
	3	25079292	2015	Antibiotic prescribing by telephone in primary care	Ewen, E.
	4	27387135	2016	Assessment of the Accuracy of Using ICD-9 Codes to Identify Uveitis, Herpes Zoster Ophthalmicus, Scleritis, and Episcleritis	Pimentel, M. A.
	5	26671776	2016	Anteroinferior versus superior plating of clavicular fractures	Hulsmans, M. H.
	6	24885103	2014	Evaluation of the quality of antenatal care using electronic health record information in family medicine clinics of Mexico City	Doubova, S. V.
	7	24972918	2014	Image-guided cryoablation for the treatment of painful musculoskeletal metastatic disease: a single-center experience	Prologo, J. D.
	8	27557876	2016	Assessing bleeding risk in 4824 Asian patients with atrial fibrillation: The Beijing PLA Hospital Atrial Fibrillation Project	Guo, Y. T.
	9	25352766	2014	Association between red blood cell storage duration and clinical outcome in patients undergoing off-pump coronary artery bypass surgery: a retrospective study	Min, J. J.
	10	26948479	2016	The platelet-to-lymphocyte ratio, superior to the neutrophil-to-lymphocyte ratio, correlates with hepatitis C virus infection	Meng, X.
	11	26126249	2015	Assessment of the Risk of Fractures Because of Service on Diesel Submarines: A Retrospective Cohort Study	Saad, A.
	12	26338196	2015	Recurrent antibiotic exposure may promote cancer formation--Another step in understanding the role of the human microbiota?	Boursi, B.
	13	26316350	2015	Pressure ulcer risk assessment: retrospective analysis of Braden Scale scores in Portuguese hospitalised adult patients	Sardo, P.

Epoch	No.	Pubmed_ID	Year	Article_Name	First_Author
	14	28191804	2016	Does Alternative and Traditional WASAM (Local cautery) Therapy Facilitate an Early and More Extensive Locoregional Metastasis of Breast Cancer?	Al-Lawati, T.
	15	27575714	2016	Proton Pump Inhibitors Do Not Increase Risk for Clostridium difficile Infection in the Intensive Care Unit	Faleck, D. M.
	16	28032424	2016	Relationship between age and erectile dysfunction diagnosis or treatment using real-world observational data in the USA	Mulhall, J. P.
	17	26846893	2016	Does Angiotensin-Converting Enzyme Inhibitor and ACE-Blocker Use Reduce the Risk of Primary Liver Cancer? A Case-Control Study Using the U.K. Clinical Practice Research Datalink	Hagberg, K. W.
	18	26113118	2015	Association between health literacy and medical care costs in an integrated healthcare system: a regional population based study	Haun, J. N.
	19	24685969	2014	Achieving serum urate goal: a comparative effectiveness study between allopurinol and febuxostat	Hatoum, H.
	20	25918332	2015	Quantifying the risk of non-Hodgkin lymphoma in symptomatic primary care patients aged ≥40 years: a large case-control study using electronic records	Shephard, E. A.
	21	27569948	2016	Four-Year Experience With Extracorporeal Membrane Oxygenation for Kidney Transplant Patients With Severe Refractory Cardiopulmonary Insufficiency	Baek, J. K.
	22	27003550	2016	Primary Nonadherence, Associated Clinical Outcomes, and Health Care Resource Use Among Patients with Rheumatoid Arthritis Prescribed Treatment with Injectable Biologic Disease-Modifying Antirheumatic Drugs	Harnett, J.
	23	25523350	2014	Associations between physical activity and cardiometabolic risk factors assessed in a Southern California health care system, 2010-2012	Young, D. R.
	24	23916153	2014	Neonatal health of infants born to mothers with asthma	Mendola, P.
	25	26928093	2016	After-Hours Call Center Triage of Pediatric Head Injury: Outcomes After a Concussion Initiative	Fishe, J. N.
	26	26832387	2016	Usual Care for Adolescent Depression From Symptom Identification Through Treatment Initiation	O'Connor, B. C.
	27	27548074	2016	Rivaroxaban versus Heparin Bridging to Warfarin Therapy: Impact on Hospital Length of Stay and Treatment Costs for Low-Risk Patients with Pulmonary Embolism	Weeda, E. R.
	28	25322196	2015	Effect of psoriasis severity on hypertension control: a population-based study in the United Kingdom	Takeshita, J.
	29	25155409	2014	Continuous antibiotic prophylaxis reduces the risk of febrile UTI in children with asymptomatic antenatal hydronephrosis with either ureteral dilation, high-grade vesicoureteral reflux, or ureterovesical junction obstruction	Herz, D.
	30	27555289	2016	Hyperuricemia is associated with increased hospitalization risk and healthcare costs: Evidence from an administrative database in Italy	Degli Esposti, L.
	31	25809093	2015	Weight Reduction Goal Achievement with High-Intensity MOVE!( $\neg$ AE) Treatment	Garvin, J. T.

Epoch	No.	Pubmed_ID	Year	Article_Name	First_Author
	32	25742528	2015	Association of worksite wellness center attendance with weight loss and health care cost savings: Mayo Clinic's experience	Borah, B. J.
	33	27178429	2016	Differences in the Protective Effect of Exclusive Breastfeeding on Child Overweight and Obesity by Mother's Race	Moorman, A. C.
	34	25933397	2015	Diagnostic intervals and its association with breast, prostate, lung and colorectal cancer survival in England: historical cohort study using the Clinical Practice Research Datalink	Redaniel, M. T.
	35	26823179	2016	Effectiveness, safety and costs of thromboembolic prevention in patients with non-valvular atrial fibrillation: phase I ESC-FA protocol study and baseline characteristics of a cohort from a primary care electronic database	Giner-Soriano, M.
5	1	24129480	2013	Risk of moderate to advanced kidney disease in patients with psoriasis: population based cohort study	Wan, J.
	2	21694510	2011	Derivation and diagnostic accuracy of the surgical lung injury prediction model	Kor, D. J.
	3	19758356	2010	Analysis of glycaemic control and weight change in patients initiated with human or analog insulin in an US ambulatory care setting	McAdam-Marx, C.
	4	20559661	2011	Treatment strategy for recurrent or residual colorectal tumors after endoscopic resection	Sakamoto, T.
	5	20478063	2010	Comparison of the consumption of antidepressants in the immigrant and native populations in a Spanish health region: an observational study	Cruz, I.
	6	21325114	2011	Effect of cardiac rehabilitation referral strategies on utilization rates: a prospective, controlled study	Grace, S. L.
	7	24454576	2013	Contributors to frequent telehealth alerts including false alerts for patients with heart failure: a mixed methods exploration	Rattinger, G. B.
	8	23278363	2013	Frequency of coronary angiography and revascularization among men and women with myocardial infarction and their relationship to mortality at one year: an analysis of the Geisinger myocardial infarction cohort	Skelding, K. A.
	9	20684459	2010	Decreasing outpatient cardiac catheterization rates associated with cardiology clinic volume but not with increasing cardiac computed tomography utilization	Hulten, E.
	10	23427784	2013	Association between second-generation antipsychotics and changes in body mass index in adolescents	Ghate, S. R.
	11	23822929	2013	Angiotensin receptor blockers: are they related to lung cancer?	Rao, G. A.
	12	21499086	2011	Impact of previous antibiotic therapy on outcome of Gram-negative severe sepsis	Johnson, M. T.
	13	22930781	2012	Obesity in pediatric specialty clinics: an underestimated comorbidity	Yi-Frazier, J. P.
	14	24064890	2013	Insurance status is a predictor of failure to rescue in trauma patients at both safety net and non-safety net hospitals	Bell, T. M.
	15	21460509	2011	Comparison of the methicillin-resistant Staphylococcus aureus acquisition among rehabilitation and nursing home residents	Furuno, J. P.
	16	23811246	2013	Association between body mass index and quality of split bowel preparation	Fayad, N. F.



Epoch	No.	Pubmed_ID	Year	Article_Name	First_Author
	17	22183839	2012	Recalibrating the Gram stain diagnosis of male urethritis in the era of nucleic acid amplification testing	Rietmeijer, C. A.
	18	21505781	2012	Risk and protective factors for pregnancy outcomes for urban Aboriginal and non-Aboriginal mothers and infants: the Gudaga cohort	Comino, E.
	19	24222835	2013	Type and timing of heralding in ST-elevation and non-ST-elevation myocardial infarction: an analysis of prospectively collected electronic healthcare records linked to the national registry of acute coronary syndromes	Herrett, E.
	20	22278427	2012	Rate of bone density change does not enhance fracture prediction in routine clinical practice	Leslie, W. D.
	21	22007937	2011	Predictors of malignancy in patients with cytologically suspicious thyroid nodules	Castro, M. R.
	22	22904260	2013	The risk of cardiovascular disease in systemic sclerosis: a population-based cohort study	Man, A.
	23	21071962	2011	Prediction of mortality in patients undergoing maintenance hemodialysis by Charlson Comorbidity Index using ICD-10 database	Chae, J. W.
	24	23343758	2013	Survival advantage and PaO2 threshold in severe traumatic brain injury	Asher, S. R.
	25	20395074	2010	Patterns of drug use and abuse among aging adults with and without HIV: a latent class analysis of a US Veteran cohort	Green, T. C.
	26	21318422	2011	Impact of an antibiotic restriction program on antibiotic utilization in the treatment of community-acquired pneumonia in a Veterans Affairs Medical Center	Mansouri, M. D.
	27	22937877	2012	Hypoglycaemia is associated with increased length of stay and mortality in people with diabetes who are hospitalized	Nirantharakumar, K.
	28	23690514	2013	Race and acute abdominal pain in a pediatric emergency department	Caperell, K.
	29	23238659	2013	Racial/ethnic differences in the prevalence of proteinuric and nonproteinuric diabetic kidney disease	Bhalla, V.
	30	23829420	2013	Non-neurological outcomes after complete traumatic spinal cord injury: the impact of surgical timing	Bourassa-Moreau, E.
	31	22871081	2012	Likelihood of acute coronary syndrome in emergency department chest pain patients varies with time of presentation	Ekelund, U.
	32	23756616	2013	Synchronization of administrations of chemotherapy and erythropoiesis-stimulating agents and frequency of associated healthcare visits	Hill, J. W.
	33	22484068	2013	Comparisons of 30-day mortalities and 90-day functional recoveries after first and recurrent primary intracerebral hemorrhage attacks: a multiple-institute retrospective study	Kim, K. H.
	34	21801091	2011	Risk factors for emergent preterm delivery in women with placenta previa and ultrasound findings suspicious for placenta accreta	Fishman, S. G.
	35	23165956	2013	Zolpidem is independently associated with increased risk of inpatient falls	Kolla, B. P.

## Appendix Table 6 Main Study Included Paper Countries

### Details, by Epoch

Country/district	Overall*	2010-2013*	2014-2016*	2017*	2018*	2019*
	175(100)	35(100)	35(100)	35(100)	35(100)	35(100)
Australia	3 (1.7)	1 (2.9)				2 (5.7)
Brazil	1 (0.6)				1 (2.9)	
Canada	3 (1.7)	3 (8.6)				
China	7 (4.0)		2 (5.7)		3 (8.6)	2 (5.7)
Croatia	1 (0.6)					1 (2.9)
Denmark	1 (0.6)					1 (2.9)
France	5 (2.9)			2 (5.7)	2 (5.7)	1 (2.9)
Israel	6 (3.4)		2 (5.7)	1 (2.9)	1 (2.9)	2 (5.7)
Italy	1 (0.6)		1 (2.9)			
Japan	4 (2.3)				1(2.9)	3 (8.6)
Korea	7 (4.0)	2 (5.7)	3 (8.6)	2 (5.7)		
Malawi	1 (0.6)			1 (2.9)		
Mexico	1 (0.6)		1 (2.9)			
Netherlands	1 (0.6)		1 (2.9)			
Oman	2 (1.1)		1 (2.9)	1 (2.9)		
Portugal	1 (0.6)		1 (2.9)			
Singapore	4 (2.3)				3 (8.6)	1 (2.9)
Spain	4 (2.3)	1 (2.9)	1 (2.9)		1 (2.9)	1 (2.9)
Sweden	2 (1.1)	1 (2.9)				1 (2.9)
Switzerland	1 (0.6)			1 (2.9)		
Taiwan	1 (0.6)			1 (2.9)		
Turkey	1 (0.6)					1 (2.9)
UK	20 (11.)	2 (5.7)	3 (8.6)	8 (23.)	4 (11.)	3 (8.6)
USA	97 (55.)	25 (71.)	19 (54.)	18 (51.)	19 (54.)	16 (46.)

## Appendix Table 7 Main Study Included Papers Statistics Tools Used, by Epoch

Statistics Tools	Overall*	2010-2013*	2014-2016*	2017*	2018*	2019*
	175(100)	35(100)	35(100)	35(100)	35(100)	35(100)
No mention	28 (16.)	6 (17.)	5 (14.)	8 (23.)	3 (8.6)	6 (17.)
CART Salford Predictive Miner	1 (0.6)	1 (2.9)				
EZR	1 (0.6)					1 (2.9)
Excel	1 (0.6)					1 (2.9)
GraphPad Prism	1 (0.6)					1 (2.9)
JMP	1 (0.6)	1 (2.9)				
Mplus	1 (0.6)	1 (2.9)				
NCSS	1 (0.6)					1 (2.9)
MedCalc	1 (0.6)		1 (2.9)			
Epidata	1 (0.6)					1 (2.9)
R	20 (11.)		2 (5.7)	5 (14.)	9 (26.)	4 (11.)
SAS	41 (23.)	8 (23.)	8 (23.)	10 (29.)	10 (29.)	5 (14.)
SigmaPlot	1 (0.6)					1 (2.9)
SPSS (& PASW Statistics)	50 (29.)	11 (31.)	13 (37.)	10 (29.)	10 (29.)	6 (17.)
Stata	37 (21.)	7 (20.)	10 (29.)	3 (8.6)	8 (23.)	9 (26.)
Statistica	1 (0.6)	1 (2.9)				
Statview	1 (0.6)	1 (2.9)				

## Appendix Table 8 Percentage of Key Methodologies, by Epoch <sup>5</sup>

	2010-2013 <sup>1</sup>	2014-2016 <sup>1</sup>	2017 <sup>1</sup>	2018 <sup>1</sup>	2019 <sup>1</sup>	overall
<b>Assessed Missing Data</b>	23 (9.0, 37)	20 (6.8, 33)	40 (24, 56)	17 (4.7, 30)	14 (2.7, 26)	23(17,29)
<b>Combined Missingness</b>	46 (29, 62)	34 (19,50)	60 (44, 76)	43 (26, 59)	49 (32, 65)	46(39, 54)
<b>ARWM</b>	11 (0.9, 22)	20 (6.8, 33)	17 (4.7, 30)	14 (2.7, 26)	14 (2.7, 26)	15(10, 20)
<b>Combined ARWM</b>	26 (11, 40)	26 (11, 40)	29 (14, 44)	23 (9.0, 37)	17 (4.7, 30)	24(18, 30)
<b>Sensitivity Analysis</b>	11 (0.9, 22)	29 (14, 44)	29 (14, 44)	8.6 (0, 18)	11 (0.9, 22)	18(12, 23)
<b>All Three Phases</b>	1.4 (0, 5.4)	8.6 (0, 18)	5.7 (0, 13)	2.9 (0, 8.4)	1.4 (0, 5.4)	3.4(0.7, 6.1)

<sup>5</sup> Analysis code please see, <https://github.com/ChenyuL/RWE-in-EHR-Data-Analysis>

<sup>1</sup>Percentage (confidence interval)

## Appendix Table 9 Article Review Details

Please check [https://github.com/ChenyuL/RWE-in-EHR-Data-](https://github.com/ChenyuL/RWE-in-EHR-Data-Analysis/blob/main/ArticleReview_DataCollection.csv)

[Analysis/blob/main/ArticleReview\\_DataCollection.csv](https://github.com/ChenyuL/RWE-in-EHR-Data-Analysis/blob/main/ArticleReview_DataCollection.csv)