

1 Effect of mangrove-sword bean-food bar on weight and
2 Weight-for-Age Z-score in under-five children after landslide
3 disaster

4
5
6 Fatmah^{1*&}, Suyud Warno Utomo ^{2&}

7
8 ¹Disaster Management Study Program, School of Environmental Science Universitas
9 Indonesia, Jakarta 10430, DKI Jakarta Province, Indonesia

10 ²Department of Environmental Health, Faculty of Public Health Universitas Indonesia,
11 Depok City, West Java Province, Indonesia

12

13

14

15

16 *Corresponding author

17 Email: ffatmah@yahoo.com (F)

18

19

20 & These authors contributed equally to this work.

21

22

23 **NOTE: This preprint reports new research that has not been certified by peer review and should not be used to guide clinical practice.**

24 **Abstract**

25 Special attention needs to be given to under-five children who have specific needs due
26 to their lower ability to prepare for disasters. Simple, ready-to-eat, and tasty food that meets
27 the micronutrient needs of the groups is needed. The study aimed to assess the effect of the
28 food bar made from *api-api* mangrove (*Avicennia marina*) and sword bean (*Canavalia*
29 *ensiformis*) blends on the weight and Weight-for-Age Z (WAZ) score after landslide disaster.
30 A non randomized pre-post intervention study was performed on 34 under-five children
31 affected by landslide disaster during 15 days. Subjects were divided into intervention (*api-api*
32 mangrove-sword bean food bars) and control groups (sword bean food bars). Both groups
33 received the food bars for 15 days. Education on balanced nutrition for under-five children
34 was provided to all subjects' mothers in the study. The study revealed that most mothers of
35 under-five children liked mangrove-sword bean food bar from the aroma, taste, texture, and
36 color in the hedonic test. The intervention group experienced weight gain (0.32 kg) and WAZ
37 score (0.73) were greater compared with the control group. There were significant difference
38 in weight and WAZ score changes of the under-five children accompanied by a significant
39 increases in mothers' knowledge on the balanced nutrition for under-five children and food
40 bar total consumption. No significant differences of macronutrient consumption, except fat
41 intake between pre-post study were found. *Api-api* mangrove-sword bean food bar can be an
42 emergency food alternative for disaster vulnerable group communities affected by natural
43 disasters. Future studies may wish to consider examining the issue using pregnant women as the
44 research subjects.

45 Keywords: Under-five children; landslide disaster; weight; WAZ score; mangrove-sword
46 bean-food bar

47

48 Introduction

49 A continuous increase in hydrometeorological disasters, such as earthquakes, tsunamis,
50 floods, and landslides, is currently observed in Indonesia, which is partly caused because the
51 country is located between two large oceans and on the meeting points of the world's three
52 major plates (Indo-Australia, Eurasia, and Pacific plates). The diverse land surface reliefs of
53 this country also contribute to this vulnerability to disasters. As of December 2022, 3,318
54 disasters have struck Indonesia, with floods as the most frequent disasters (42.8%) [1].

55 West Java Province, the most populated province in Indonesia, ranks first among the
56 provinces with the highest incidences of natural disasters in Indonesia from January to
57 November 2022 [2]. Sumedang District, one of the districts in this province, experienced 85
58 landslides in 2021 alone [3]. In January 2022, a landslide occurred after the area experienced
59 high-intensity rain that lasted 2 hours. This landslide claimed 40 lives while severely
60 damaging many buildings [4].

61 One of the main problems faced in natural disaster management is fulfilling nutritional
62 needs, especially for vulnerable groups, including under-five children. On the other hand,
63 under-five children often experience malnutrition during a disaster caused by a low intake of
64 macronutrients. Under-five children need age-appropriate balanced nutrients. To overcome
65 this issue, Emergency Food Products (EFP) with complete nutrients should be able to be
66 consumed directly as the main source of energy for 15 days during the disaster management
67 period or start from the evacuation time [5-6].

68 Several emergency food formulations have been developed in Indonesia, including food
69 bars made from brand and corn flours [7], cookies from Moringa leaf flour [8], cookies from
70 sweet potato flour, banana flour, mung bean flour [9], and soybean broccoli mangrove fruit
71 food bar [10]. However, even though *api-api* mangrove (*Avicennia marina*) is considered one
72 of the ingredients that can substitute rice and wheat flour for making biscuits, it has never

73 been used to make food bars. The *api-api* mangrove has a higher energy content than rice and
74 corn [11]. However, the fat, carbohydrate, protein, zinc, and vitamin C contents in the food
75 bars made of this flour need to be increased. Therefore, sword bean (*Canavalia ensiformis*)
76 flour is chosen to produce better nutritional outcomes among under-five children.

77 The food bar is an appropriate type of emergency food for disaster refugees because it
78 can be produced from various local food ingredients and its solid, compact form makes it
79 easier to distribute to the refugees. It also contains high carbohydrates and proteins and can
80 be directly consumed without processing them first. In addition, food bars are more resistant
81 to pressure than biscuits or cookies because of their semi-wet nature [12]. A study on food
82 bars made of *lindur* fruit (*Bruguiera gymnorhiza*) flour, broccoli flour, and soybean flour
83 was conducted in 2020. A total of 33 older people refugees affected by a flood in Depok City
84 consumed the food bars for 15 days. The weight of these older people was found to increase
85 by 0.2 kg during this period [10].

86 This study explored an EFP in the form of food bars made of a mixture of *api-api*
87 mangrove flour and sword bean. *Api-api* mangrove was selected because it is rarely studied
88 compared with *lindur* mangrove. This type of mangrove also contains carbohydrates, albeit in
89 a slightly lower amount [13]. One hundred grams of *api-api* mangrove contains 21.43%
90 carbohydrates, 10.4% protein, 0.04% fat, and 22.24/mL of vitamin C [14]. Meanwhile, in 100
91 g of sword bean beans, there are 55 g of carbohydrate, 24 g of protein, and 3 g of fat,
92 producing 332 kcal of energy [15]. *Api-api* mangrove flour can be used as a substitute for
93 wheat flour in making biscuits [11]. However, the use of *api-api* mangrove flour as a raw
94 material for food products, such as biscuits and cookies, is still uncommon. Under-five
95 children met their total calorie needs by consuming the food bars three times a day [16].

96

97

98 **Materials and methods**

99 **Study design**

100 A non-randomized pre-post intervention study was conducted in 34 under-five children
101 affected by landslides disaster as the research subject [17]. The intervention group came from
102 three neighborhoods (1,2,3) and the control group taken from other three neighborhoods
103 (4,5,6).

104

105 **Ethical approval**

106 Ethical clearance was obtained from the Ethics Commission for Health Research and
107 Development (KEPPK) of the Sint Carolus, College of Health Sciences, Jakarta
108 (No.089/KEPPKSTIKSC/VII/2022). All selected mothers of under-five children subjects
109 signed a written informed consent form before fully participating in this study in the early
110 August 2022. The signing was performed during the introductory activities of this study and
111 witnessed by the integrated health post of under-five children (*posyandu*) cadres and research
112 team.

113

114 **Population and subject**

115 The study population consisted of under-five children who were victims of the landslide
116 disaster in Cihanjuang Village, Cimanggung Sub-district, Sumedang District, West Java
117 Province, Indonesia. The list of under-five victims of landslides disaster taken from the
118 Cihanjuang Village Chief. The inclusion criteria for under-five children were aged between
119 12 and 59 months; male and female; living in Cihanjuang Village of Sumedang District;
120 affected by the landslide disaster; had malnutrition, normal, or overnutrition status; not

121 suffering from infectious diseases; and willing to avoid consumption of any snacks other than
122 the food bars and plain water. The minimum sample size was calculated using the hypothesis
123 test of paired mean difference formula [18]. This was based on the weight gain of 0.4 kg
124 among under-five children with a standard deviation of 1.9 [19]. This study used a two-sided
125 significance level of 0.05. Thus, a sample size of $n = 15$ was needed to reach 90% statistical
126 power.

127
128

129 **Subject recruitment**

130 The number of under-five children who fully participated until the end of the study was 35
131 subjects. Out of 35 under-five children subjects at the start of study, there were 17 subjects in
132 the intervention and 17 subjects in the control group who fully participated until finished.
133 One subject was excluded from the study because he getting bored with food bars and stop
134 eating it (Figure 1).

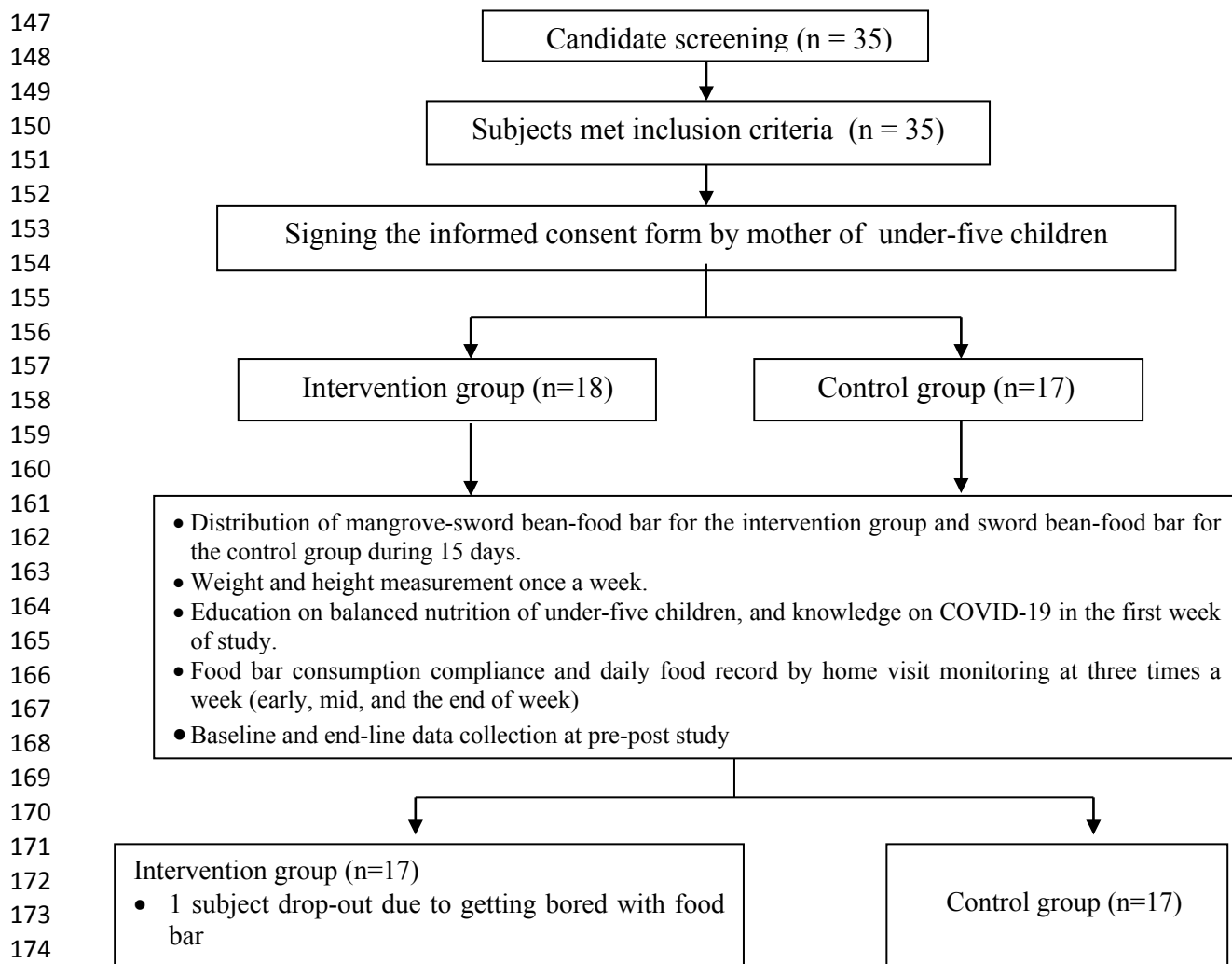
135 The name list of under-five children landslide victims was obtained from the head of the
136 integrated health post for under-five children (*posyandu*). The anthropometric measurements
137 were conducted at the *posyandu* locations to collect the initial nutritional status data. The
138 prospective subject were also invited to attend the dissemination to introduce the 15-day
139 study [20].

140

141 **Nutrition intervention and follow-up**

142 The under-five children in the intervention group received mangrove-sword bean-food
143 bar during 15 days, which was calculated starting from the evacuation day as defined by the
144 UNHCR [20]. Each day, the subject in the intervention group had 50 g food bars as snacks.

145 Every 50 g of food bar contains 234.2 kcal of energy, 24.7 carbohydrates, 5.8 g of protein,
 146 and 12.5 g of fat (Table 1).



177 Fig 1. Research scheme of under-five children

181 **Table 1.** Nutrient content per 50 g of food bar

182

183 Type of food bar	183 Energy (kcal)	183 Carbohydrate (g)	183 Protein (g)	183 Fat (g)
186 Mangrove sword bean	234.2	24.7	5.8	12.5
187 Sword bean	230.4	26.5	3.9	12.1

188

189 *Source: Saraswanti Laboratory Bogor, 2022*

192 The baseline questionnaire was used to collect data, and data were collected by
193 enumerators by interviewing all mothers of under-five children to obtain an overview of the
194 socio-demographic characteristics of mothers of under-five children (age, marital status,
195 highest formal education, occupation, and status of cohabitation at home), as well as the
196 characteristics of the under-five children (age and sex). The questionnaire also assessed the
197 knowledge of balanced nutrition (healthy food menu; benefits of carbohydrates, proteins,
198 vitamins, and minerals; definition of healthy food; definition of balanced nutrition; the need
199 to measure weight; definition of stable or reduced weight with its causal factors and impacts;
200 and efforts to increase weight).

201 Anthropometric data collection was performed three times: before, during, and after the
202 study. The weight and height were measured using a digital scale and microtoise,
203 respectively. Balanced nutrition and landslide disaster mitigation in the form of brochure and
204 flipchart developed by the research team. The nutrition education was conducted in the first
205 week for mothers of under-five children in the intervention group. The education for mothers
206 of the under-five children was delivered in Indonesian. At the end of the study, endline data
207 collection was performed to assess the extent of changes in balanced nutrition as well as the
208 macronutrient intake, after education was provided.

209

210 **Hedonic/organoleptic test of food bar**

211 Hedonic test was undertaken before mangrove-sword bean-food bar used as the EFP for
212 the under-five children. The objective of test was to determine the preference of food bar:
213 api-api mangrove-sword bean blends. Twenty mothers of under-five children who were
214 selected from different area with the study sites designed as a untrained panelist in the
215 organoleptic test. In the case of untrained panelists, 10–20 people are preferable [21]. All
216 semi-trained panelists did not participate in the research subjects to avoid bias. They

217 recognized the quality of food bar (color, aroma, taste, and texture) which can influence their
218 compliance liking and acceptance the food bar. Aroma, texture, color, and taste of food bar
219 were rated using a four-point hedonic scale ranging from 1 (very dislike), 2 (dislike), 3
220 (likes), and 4 (very like) [22].

221

222 **Cookie consumption compliance monitoring**

223 Cookie consumption of subjects was monitored through three times home visits a week
224 and anthropometric data measurement at *posyandu* once a week during the study. Data on
225 food consumption, cookie distribution, the remaining number of cookies, and cookie
226 consumption aftermath were recorded at each home visit. In the beginning, one subject felt
227 cookies was hard. However, after the mother was explained by the enumerators about the side
228 effects appeared as a form of early adaptation then her children continued it. Compliance
229 level to taking the food bar in the under-five children was pretty good.

230 Food consumption record data were collected by trained enumerators during home visits,
231 which were scheduled three times a week while distributing the food bars. The monitoring of
232 food bar consumption compliance was carried out through the collection of anthropometric
233 data on subjects at the first week and the second week of study, as well as by recording 24
234 hours/3 days/week food recalls.

235

236 **Food bar cooking process**

237 The *api-api* mangrove sword bean food bar (Figure 2) is made from *api-api* mangrove
238 flour with the addition of melted butter, chicken eggs, refined white sugar, a small amount of
239 wheat, and chocolate/strawberry/orange pasta. The equipment used for making the food bar
240 consisted of a digital oven, mixer, 20 cm × 15 cm aluminum brownie mold, digital scale, food
241 bar dough cutting knife, and dough grinder. The steps for making food bars as follows:

- 242 1. Melt the butter and mix it with refined white sugar. A mixer was used to mix the
243 dough for 5 minutes until it was homogeneous.
- 244 2. Add the *api-api* mangrove flour gradually into the mixture, followed by sword bean
245 flour, egg yolks, and pasta.
- 246 3. Stir the dough gently with a large wooden spatula until it reached a homogenous
247 consistency.
- 248 4. Pour the dough into a brownie mold and baked in a digital oven for 30 minutes at a
249 temperature of 180°C.

250

251 **Data analysis**

252 Univariate analyses was performed to obtain the mean values of food bar organoleptic
253 test; socio-demographic characteristics, the nutritional status, and knowledge of balanced
254 nutrition and landslide disasters of mothers of the under-five children using SPSS version 22
255 software. The 2-weeks food consumption data analyzed by The Nutri Survey Program [23].
256 The food data consumption data analyses aimed to measure change of macronutrient intake
257 (energy, carbohydrate, fat, and protein) at pre-post study. Bivariate analysis with a statistical
258 paired t-test was used to assess changes in mean weight, Weight for Age Z-score (WAZ),
259 macronutrient intake (energy, carbohydrate, protein, and fat), and balanced nutrition
260 knowledge for under-five children.

261

262 **Results**

263 The study assessed the mangrove-sword bean-food bar preference using four parameter:
264 color, aroma, taste, and texture. Mothers of under-five children more liked the mangrove-
265 sword bean food bar from color, aroma, taste, and texture than sword bean food bar (Table 2).

266 **Table 2.** Organoleptic test of mangrove-sword bean and sword-bean food bars by mothers of
 267 under-five children

268

Parameter	The mean value of food bar	
	Mangrove -sword bean food bar	Sword bean food bar
272 Color	3.10 ± 0.60 (like)	3.10 ± 0.60 (like)
273 Aroma	3.05 ± 0.45 (like)	2.15 ± 0.14 (dislike)
274 Taste	3.04 ± 0.32 (like)	2.20 ± 0.45 (dislike)
275 Texture	3.14 ± 0.23 (like)	2.10 ± 0.12 (dislike)

276

277 *1=very dislike; 2=dislike; 3= likes; 4 = very like*

278

279

280 **Table 3.** Socio-demographic characteristics of under-five children subjects

Variable	Control		Intervention		Total	
	n	%	n	%	n	%
<i>Characteristic of family</i>						
Marital status						
Married	16	94.1	17	100.0	33	97.1
Widow/widower	1	5.9	0	0.0	1	2.9
Age of mother (years old)						
Mean ± SD	30.7 ± 6.8		30.6 ± 7.5		30.6 ± 7.0	
20–29	8	47.1	9	52.9	17	50.0
30–39	7	41.2	7	41.2	14	41.2
40–50	2	11.8	1	5.9	3	8.8
Mothers' education						
Graduated from junior high school or less	11	64.7	8	47.3	19	55.9
Graduated from senior high school	5	29.4	8	47.1	13	38.2
Academy / bachelor	1	5.9	1	5.9	2	5.9
Working status of mother						
No	11	64.7	11	64.7	22	64.7
Yes	6	35.3	6	35.3	12	35.3
Living arrangement						
Family (father, mother, children)	15	88.2	17	100.0	32	94.1
Join with another family	2	11.8	0	0.0	2	5.9
<i>Characteristic of under-five children</i>						
Sex						
Female	12	70.6	8	47.1	20	58.8
Male	5	29.4	9	52.9	14	41.2
Age (month)						
Mean ± SD	38.4 ± 12.1		33.9 ± 14.3		36.1 ± 13.2	

281

282 The socio-demographic characteristics of under-five children subject in this study were
 283 divided into maternal (marital status, age, final education, employment status, and
 284 cohabitation status at home) and under-five children characteristics (sex and age) in the
 285 intervention and control groups (Table 3). Almost all the mothers of the under-five children
 286 in both groups were married with age ranging from 20 to 29 years old. Most mothers of the
 287 under-five children graduated from junior high school and were unemployed. Most of the
 288 subject lived in nuclear family with the arrangement of father, mother, and son/daughter was
 289 mostly identified as living in the same house with the subjects. More girls participated in this
 290 study than boys. The mean age of under-five children in both groups was 36 months, with the
 291 mean age of intervention group slightly lower than that of the control group.

292 **Table 4.** The mean difference of weight and WAZ score of under-five children at pre-post
 293 study

Indicator	Control		Intervention		Different	<i>p</i>
	Mean	SD	Mean	SD		
Weight (kg)						
At pre/before	13.18	2.83	12.01	2.17	1.17	0.186
At post/after	13.42	2.82	12.34	2.14	1.09	0.215
Different	0.24	0.17	0.32	0.14	0.08	0.138
95% CI of different	(0.13 – 0.33)		(0.25 – 0.39)			
<i>p</i> *	**<0.001		**<0.001			
WAZ score (Weight for Age)						
at pre/before	-0.68	1.27	- 0.32	1.04	-0.36	0.373
at post/after	-0.88	1.19	-0.01	0.91	-0.87	**0.02 3
Different	-0.19	0.82	0.31	0.73	0.51	0.067
95% CI of different	(-0.18 – 0.57)		(-0.11 – 0.74)			
<i>p</i> *	0.288		0.137			

294
 295 #*p*: independent *t*- test
 296 *p**: dependent *t*- test
 297 ***p* < 0.05 at significant level
 298 *CI* : Confidence Interval
 299

300 Table 4 displays the anthropometric data (weight and WAZ score) of under-five children
 301 at before and after the intervention. At the end of the study, the under-five children in the
 302 intervention group had a slightly higher weight gain than the control group. The under-five

303 children's weight in each group demonstrated a significant difference between before and at
 304 the end of the study ($p < 0.001$). However, this was not the case when the weight was
 305 compared between groups ($p > 0.05$). The intervention group are likely to experience a WAZ
 306 score greater as a result of a food bar supplementation intervention compared with the control
 307 group. The difference in mean WAZ score change between the intervention and control
 308 groups was statistically significant ($p=0.023$).

309 **Table 5.** The mean of macronutrient intake of under-five children and balanced nutrition
 310 knowledge of mothers

Indicator	Control	Intervention	<i>p</i>
	Mean \pm SD	Mean \pm SD	
Energy (kcal)			
At 1 st week	1106.9 \pm 253.2	977.3 \pm 223.5	0.124
At 2 nd week	1156.5 \pm 310.7	1106.9 \pm 253.2	0.193
<i>p</i> *	0.293	0.338	
Carbohydrate (g)			
At 1 st week	149.9 \pm 43.9	130.9 \pm 34.4	0.171
At 2 nd week	162.5 \pm 57.5	134.5 \pm 32.7	0.093
<i>p</i> *	0.252	0.643	
Protein (g)			
At 1 st week	34.3 \pm 9.9	30.1 \pm 11.1	0.253
At 2 nd week	37.9 \pm 15.1	32.0 \pm 8.9	0.180
<i>p</i> *	0.187	0.496	
Fat (g)			
At 1 st week	39.9 \pm 11.7	33.7 \pm 10.6	0.107
At 2 nd week	45.7 \pm 21.8	55.6 \pm 9.4	**0.04
<i>p</i> *	0.601	0.111	
Total consumption of food bar (g)	588.2 \pm 158.6	650.5 \pm 100.9	**0.045
Balanced nutrition knowledge of mothers			
Pre-study	42.2 \pm 6.9	43.5 \pm 16.1	**< 0.001
Post-study	62.2 \pm 13.3	65.7 \pm 19.4	**< 0.001

311
 312 #*p*: independent *t*-test
 313 *p**: dependent *t*-test
 314 ***p* < 0.05 at significant level
 315

316 Table 5 displays the mean difference of macronutrients intake, score of knowledge on the
 317 under-five children balanced nutrition, and food bar total consumption. At the end of study,

318 those in the intervention group showed significantly greater increment in fat intake and food
319 bar total consumption. There were significant result was found for under-five children
320 mothers' knowledge on the under-five children balanced nutrition in the two groups at post
321 study.

322

323 **Discussion**

324 Nutrition management activities during and after the reconstruction and rehabilitation
325 stages of a disaster aim to improve and maintain the nutritional status of victims of natural
326 disasters [24]. The nutritional requirements of under-five children during and after the disaster
327 have not been specifically handled, and there is no specific food available for under-five
328 children. In addition, the amount and type of food available for disaster victims are not yet
329 appropriate and cannot meet the nutritional needs of under-five children [25]. Under-five
330 children are the most vulnerable group affected by disasters, and the provision of emergency
331 food is not only needed to meet nutritional feasibility, but also to meet nutritional needs.
332 Providing nutritious food and nutrition education can lead to positive results in preventing
333 malnutrition among under-five children after natural disasters while also increasing food
334 security [26].

335 Nutrition management after a disaster through surveillance activities in the form of
336 anthropometric assessment of under-five children and nutrition awareness activities,
337 including nutrition education and consumption of food bars as a follow-up or response to the
338 information obtained from public health service activities, can improve and maintain the
339 nutritional and health status of disaster victims [27]. After a natural disaster strikes, there is
340 an increase in the number of under-five children who are undernourished and stunted,
341 emphasizing the need for nutrition and education interventions. Integrated nutritional

342 interventions performed in collaboration with local health services, such as *posyandu* for
343 under-five children can result in optimum results. The readiness of individuals and
344 institutions to build local safety culture can increase post-disaster resilience. Food security
345 needs to be included in the recovery efforts to maintain the nutritional and health status of
346 group that are vulnerable to disasters, such as under-five children. The Sendai Framework has
347 prioritized under-five children group in reducing disaster risk [28]. Increased active
348 community participation through compliance with emergency food consumption during post-
349 disaster rehabilitation plays a role in the post-disaster recovery process.

350 The increase in weight of under-five children measured in this study is 0.2 kg, which
351 supports the findings of several studies reviewed by Pradhan et al. in 2016. Nutritional
352 supplementation of under-five children after a disaster can improve the nutritional status of
353 children who experience undernutrition, have short stature, and are underweight [29].
354 Breastfeeding for up to 2 years for under-five children after the Palu earthquake has been
355 shown to reduce the incidence of stunting [28]. The current study described an increase in
356 weight and WAZ score in 15 days, but are unable to prove any significant differences in the
357 nutritional status of under-five children based on the maternal socio-demographic
358 characteristics, knowledge of balanced nutrition, and the macronutrient intake of the under-
359 five children, except fat intake. This may be due to the relatively short intervention of 15
360 days; small sample size (18 under-five children); mean of under-five children with normal
361 nutritional status (WAZ), and the consumption of food bars as snacks.

362 The total consumption food bar and fat intake for under-five children influenced changes
363 in the weight and Z-score of W/A in the present study based on the comparison of the pre-post
364 study values. The daily consumption of macronutrients for under-five children after a disaster
365 met 50% of the RDA (Recommended Daily Allowance) with the daily consumption of 50 g
366 of mangrove food bars containing 234.2 g of energy, 24.7 g of carbohydrate, 12.5 g of fat,

367 and 5.8 g of protein. The finding of current study contradicts the findings demonstrated in a
368 previous study that showed a decrease in the prevalence of under-five children who are
369 underweight and have short stature after a disaster [30]. The nutritional management for
370 under-five children after disaster should integrated nutrition interventions with public health
371 promotion activities such as nutrition counselling campaign or education [31].

372 Knowledge of balanced nutrition of mothers of under-five children differed significantly
373 at the end of the study. These findings are in line with three studies that proved nutrition
374 education improves the nutritional status of thin, short, and under-five children with anemia
375 [32,33,34]. On the other hand, low maternal knowledge of balanced nutrition affects the
376 pattern of feeding practices and efforts to meet the nutrition requirements of under-five
377 children [35]. Nutrition education is effective in improving nutritional knowledge and
378 eventually increasing nutritional status of under-five children.

379 The present study has some limitations. First, the small sample size for this study was
380 recruited from one selected sub-village only so it cannot be generalized for Sumedang
381 District. Second, the short duration in the two weeks might influence the change weight and
382 WAZ to be not optimal. For future research, it is recommended a similar study measuring
383 height and WHZ of under-five children with big sample size (for example 40 subjects) and
384 long duration (for example 3 months) combining with the nutrition counselling using the
385 control group as the comparison.

386

387 **Conclusion**

388 Although, there is no significant increase in the WAZ score, but there is a significant
389 difference in the weight of under-five children after consuming the *api-api* mangrove and
390 sword bean food bar. Thus, this food bar is still suitable for emergency food alternatives
391 during and after a disaster due to its nutrient contents and form. Nutrition education is also an

392 important aspect of nutrition provision to disaster refugees, especially for vulnerable groups,
393 such as under-five children. Further research with a bigger sample size and a longer period is
394 needed to produce evidence on the impact of emergency food, such as food bars on the
395 nutrition status of disaster refugees, especially for vulnerable groups such as older people and
396 pregnant women. These further studies also need to involve different types of nutritional
397 status, including underweight, stunted under-five children or underweight older people.

398

399 **Acknowledgements**

400 The authors thank all parties who have supported the smooth implementation of the
401 study, including all the older people and mothers of the under-five children participating in
402 this study, as well as cadres of the Integrated Health Post (*posyandu*) for older people and
403 under-five children in Cihanjuang Village, Cimanggung subdistrict, Sumedang District and
404 all field enumerators.

405

406 **References**

- 407 1. Annur CM. A total of 3,318 natural disasters have occurred in Indonesia until early
408 December 2022. 2022, [https://databoks.katadata.co.id/datapublish/2022/12/05/sebanyak-](https://databoks.katadata.co.id/datapublish/2022/12/05/sebanyak-3318-bencana-alam-terjadi-di-indonesia-sampai-awal-desember-2022)
409 [3318-bencana-alam-terjadi-di-indonesia-sampai-awal-desember-2022](https://databoks.katadata.co.id/datapublish/2022/12/05/sebanyak-3318-bencana-alam-terjadi-di-indonesia-sampai-awal-desember-2022). (Accessed 1
410 December 2022).
- 411 2. Annur CM. There were 3 thousand natural disasters in Indonesia until early November
412 2022. 2022, [https://databoks.katadata.co.id/datapublish/2022/11/03/ada-3-ribu-bencana-](https://databoks.katadata.co.id/datapublish/2022/11/03/ada-3-ribu-bencana-alam-di-indonesia-sampai-awal-november-2022)
413 [alam-di-indonesia-sampai-awal-november-2022](https://databoks.katadata.co.id/datapublish/2022/11/03/ada-3-ribu-bencana-alam-di-indonesia-sampai-awal-november-2022). (Accessed 2 December 2022).

- 414 3. Sumedang District Disaster Management Agency. Data on mapping results of disaster-
415 prone areas in the Sumedang District in 2021. Sumedang: Sumedang District Disaster
416 Management Agency;2021.
- 417 4. Nida A. The landslide disaster in Sumedang killed 40 people on January 9, 2021. 2021,
418 [https://kabarbesuki.pikiran-rakyat.com/peristiwa/pr-193439734/bencana-tanah-longsor-](https://kabarbesuki.pikiran-rakyat.com/peristiwa/pr-193439734/bencana-tanah-longsor-di-sumedang-tewaskan-40-korban-jiwa-pada-9-januari-2021)
419 [di-sumedang-tewaskan-40-korban-jiwa-pada-9-januari-2021](https://kabarbesuki.pikiran-rakyat.com/peristiwa/pr-193439734/bencana-tanah-longsor-di-sumedang-tewaskan-40-korban-jiwa-pada-9-januari-2021). (Accessed 3 December
420 2022).
- 421 5. Ekafitri R, Faradilla RHF. Utilization of local commodities as emergency food raw
422 materials. *Food* 2011; 20(2):153-161.
- 423 6. Mariam S. Development of emergency food to meet the nutritional needs of people in
424 disaster-affected areas. National Seminar on Math, Science, and Technology, Faculty of
425 Science and Technology, 2019 (Roles of Math, Science, and Technology in Disaster
426 Management), 03 October 2019, Universitas Terbuka Convention Center (UTCC). 2019,
427 <http://repository.ut.ac.id/8956>. (Accessed 4 December 2022)
- 428 7. Kusumastuty I, Laily F, Arliek RJ. Food bar formulation of bran flour and corn flour as
429 emergency food. *Indonesian Journal of Human Nutrition (IJHN)* 2015;2(2): 68-75.
- 430 8. Fitri KD, Neneng S, Yudi G. Making cookies with the addition of moringa leaf flour
431 (Moringa oleifera) at various baking temperatures. *Scriptio*. Bandung: Faculty of
432 Technique Pasundan University; 2022.
- 433 9. Anggraeni GS. 2018. Formulation of emergency food products based on sweet potato
434 flour, banana flour, and mung bean flour using Intermediate Moisture Food (IMF)
435 technology. *Scriptio*. Bogor: Faculty of Agricultural Technology of Bogor Agricultural
436 University;2014.

- 437 10. Fatmah F, Utomo SW, Lestari F. Broccoli-soybean-mangrove food far as an emergency
438 food for older people during natural disaster. *Int. J. Environ. Res. Public Health* 2021;
439 18: 1-14.
- 440 11. Fauziyana I. Potential utilization of mangrove api-api (*Avicennia marina*) fruit as
441 processed pastries with chemical tests and organoleptic tests. Mini Thesis. Bandar
442 Lampung: Faculty of Teaching and Science, Islamic State University of Raden Intan
443 Lampung; 2021.
- 444 12. Anandito BKA, Siswanti S, Edhi N, Rini H. Emergency food formulation in the form of
445 food bars based on white millet flour (*Panicum milliaceum* L.) and red bean flour
446 (*Phaseolus vulgaris* L.). *Agritech* 2016; 36 (1): 23-29
- 447 13. Rosulva I, Purwiyatno H, Slamet B, Azis BS. The potential of mangrove fruit as an
448 alternative food source. *Jurnal Teknologi Pertanian* 2021; 14(2): 131-150.
- 449 14. Wibowo C, Cecep K, Ani S, Yekti H, Poppy O. Utilization of api-api mangrove
450 (*Avicennia* spp) as food and medicine. Research result seminar proceeding of Bogor
451 Agricultural University. Bogor: Bogor Agricultural University; 2009.
- 452 16. The Indonesian Ministry of Health (MOH). The Indonesian Food Composition Table
453 Jakarta: MOH; 2018.
- 454 17. Sastroasmoro S, Ismael S. Fundamentals of clinical research methods. Jakarta: CV
455 Sagung Seto; 2014.
- 456 18. Ariawan, I. Sample size and methods in health research. Depok: Faculty of Public
457 Health Universitas Indonesia;1998.
- 458 19. Fatmah F, Nur A, Ety R. Effect of orange almond potato cookies supplementation on
459 the nutritional status of underweight preschool-aged children during COVID-19
460 pandemic. *Plos One* 2022; 17(4): 1-13.

- 461 20. UNHCR, UNICEF, WFP, WHO. Food nutrition needs in emergencies. Geneva: UNHCR;
462 2002; pp. 23–24.
- 463 21. Szabo PB. Sensory evaluation in food industry. Available online: [https://u-](https://u-szeged.hu/download.php?docID=55794)
464 [szeged.hu/download.php?docID=55794](https://u-szeged.hu/download.php?docID=55794). (Accessed 16 December 2022).
- 465 22. Lawless HT, Heymann H. Sensory evaluation of food : principles and practices. 2nd ed.
466 New York: Springer; 2010.
- 467 23. Nutrition Survey and Calculation. <http://www.nutrisurvey.de>. (Accessed 30 March
468 2023).
- 469 24. Ministry of Health of the Republic of Indonesia. Nutrition activities in the disaster
470 management. Jakarta: Directorate of Nutrition and Maternal and Child Health of the
471 Ministry of Health of the Republic of Indonesia; 2012.
- 472 25. Haniarti, Syarifuddin Y. Nutrition management of post disaster relief. *Jurnal Ilmiah*
473 *Manusia dan Kesehatan* 2020;1(1):133-142.
- 474 26. Darwis RS, Hardian EN, Robi A, Nandi S, Bambang NH, Syamsul H, Rin I T. Food
475 fulfilment for children under-five by family in disaster reserve area. *Asian Journal for*
476 *Poverty Studies* 2018; 4(1):7-11.
- 477 27. Adeoya AA, Hiroyuki S, Mikiko F, Tomoko O, Shinichi E. Child nutrition in disaster: a
478 scoping review. *Tohoku J. Exp. Med.* 2022; 256:103-118.
- 479 28. Hafid F, Taqwin T, Linda L, Nasrul N. Specific interventions to prevent stunting in
480 children under 2 years after the natural disaster. *Open Access Macedonian Journal of*
481 *Medical Science* 2021;12; 9 (E):64-69.
- 482 29. Pradhan PM, Dhital, R, Subhani H. Nutrition interventions for children aged less than 5
483 years following natural disasters: a systematic review protocol. *BMJ Open* 2015; 5,
484 e009525.

- 485 30. Balhara KS, Silvestri DM, Winders WT, Selvam A., et al. Impact of nutrition
486 interventions on pediatric mortality and nutrition outcomes in humanitarian emergencies:
487 a systematic review. *Tropical Medicine and International Health* 2017; 22(12):1464-
488 1492.
- 489 31. Laili RD, Arie DA, Dewinta H, Rossa K.E. Establishing nutritional management after
490 natural disaster for children under-five years in Indonesia: a systematic review.
491 *International Journal of Advancement Life Sciences Research* 2022, 5(4):11-18.
- 492 32. Puspasari N, Andriani M. Correlation between mother's knowledge about nutrition and
493 toddler food intake with toddler nutritional status (Weight/Age) aged 12-24 months.
494 *Amerta Nutrition* 2017; 1(4):369-378. <https://doi.org/10.20473/amnt.v1i4.2017.369-378>.
- 495 33. Shalaby SI, Rajendra K, Neelima G. Impact of nutritional health educational program 'on
496 elderly person' nutritional knowledge, attitude, and practice. *Research Journal of*
497 *Pharmaceutical, Biological and Chemical Sciences* 2016; 7(3): 460-476.
- 498 34. Prasetyo YB, Permatasari P, Susanty HD. The effect of mothers' nutritional education
499 and knowledge on children's nutritional status. *International Journal of Child Care and*
500 *Education Policy* 2023; 11.
- 501 35. Widiyanto J, Laia FS. Mother knowledge of nutrition and effect of nutritional status of
502 children in community health center. *Hospital Studies Management Journal (Homes)*
503 2021; 2(1): 34-42.



Figure