

1 **ACCELEROMETER-BASED SEDENTARY BEHAVIOUR AND PHYSICAL ACTIVITY ARE**
2 **ASSOCIATED WITH THE GUT MICROBIOTA IN 8507 INDIVIDUALS FROM THE**
3 **POPULATION-BASED SCAPIS**

4 Gabriel Baldanzi¹, Sergi Sayols-Baixeras^{1,2}, Elin Ekblom-Bak³, Örjan Ekblom³, Koen F. Dekkers¹, Ulf
5 Hammar¹, Diem Nguyen¹, Shafqat Ahmad^{1,4}, Ulrika Ericson⁵, Daniel Arvidsson⁶, Mats Börjesson^{7,8}, Peter
6 J. Johanson^{9,10}, J Gustav Smith^{11,12,13}, Göran Bergström^{14,15}, Lars Lind¹⁶, Gunnar Engström⁵, Johan
7 Ärnlov^{17,18}, Beatrice Kennedy¹, Marju Orho-Melander⁵, Tove Fall¹

8

9 ¹Department of Medical Sciences, Molecular Epidemiology and Science for Life Laboratory, Uppsala
10 University, Uppsala, Sweden.

11 ²CIBER Cardiovascular diseases (CIBERCV), Instituto de Salud Carlos III, Madrid, Spain.

12 ³Department of Physical Activity and Health, The Swedish School of Sport and Health Sciences,
13 Stockholm, Sweden.

14 ⁴Preventive Medicine Division, Harvard Medical School, Brigham and Women's Hospital, Boston, MA,
15 United States.

16 ⁵Department of Clinical Sciences in Malmö, Lund University, Malmö, Sweden.

17 ⁶Center for Health and Performance, Department of Food and Nutrition, and Sport Science, University of
18 Gothenburg, Gothenburg, Sweden.

19 ⁷Center for Lifestyle Intervention, Department of Molecular and Clinical Medicine, University of
20 Gothenburg, Gothenburg, Sweden.

21 ⁸Department of Medicine, Geriatric and Acute Medicine Östra, Sahlgrenska University Hospital,
22 Gothenburg, Sweden.

23 ⁹Department of Medical Sciences, Occupational and Environmental Medicine, Uppsala University,
24 Uppsala, Sweden.

25 ¹⁰Occupational and Environmental Medicine, Uppsala University Hospital, Uppsala, Sweden.

26 ¹¹The Wallenberg Laboratory/Department of Molecular and Clinical Medicine, Institute of Medicine,
27 Gothenburg University and the Department of Cardiology, Sahlgrenska University Hospital, Gothenburg,
28 Sweden;

29 ¹²Department of Cardiology, Clinical Sciences, Lund University and Skåne University Hospital, Lund,
30 Sweden;

31 ¹³Wallenberg Center for Molecular Medicine and Lund University Diabetes Center, Lund University,
32 Lund, Sweden;

33 ¹⁴Department of Molecular and Clinical Medicine, Institute of Medicine, Sahlgrenska Academy,
34 University of Gothenburg, Gothenburg, Sweden.

35 ¹⁵Department of Clinical Physiology, Sahlgrenska University Hospital, Region Västra Götaland,
36 Gothenburg, Sweden.

37 ¹⁶Department of Medical Sciences, Clinical Epidemiology, Uppsala University, Uppsala, Sweden

38 ¹⁷Division of Family Medicine and Primary Care, Department of Neurobiology, Care Science and Society,
39 Karolinska Institutet, Huddinge, Sweden.

40 ¹⁸School of Health and Social Studies, Dalarna University, Falun, Sweden.

41

42 Correspondence to: Tove Fall, PhD, Professor in Molecular Epidemiology, Dept. of Medical Sciences,
43 Uppsala University, EpiHubben, MTC-huset, 75185, Uppsala, Sweden. E-mail: tove.fall@medsci.uu.se

44 **ABSTRACT**

45 **Objective:** Population-based studies investigating the relationship between physical activity and the gut
46 microbiota composition have mainly relied on self-reported activity, potentially influenced by reporting
47 bias. Here, we investigated associations of accelerometer-based sedentary behaviour and physical activity
48 with the gut microbiota composition and functional profile in the large Swedish CARDioPulmonary
49 bioImage Study.

50 **Methods:** In 8507 participants aged 50-65, the proportion of time in sedentary (SED), moderate-intensity
51 (MPA), and vigorous-intensity (VPA) physical activity were estimated with hip-worn accelerometer. The
52 gut microbiota was profiled using shotgun metagenomics of fecal samples. We fitted multivariable
53 regression models, and adjusted for sociodemographic, lifestyle, and technical covariates while also
54 accounting for multiple testing.

55 **Results:** Overall, SED and MPA were associated with microbiota species in opposite directions. For
56 example, the strongest positive regression coefficient for MPA and the strongest negative for SED were
57 with *Prevotella copri*, a plant-polysaccharide-degrading bacteria. Species associated with VPA aligned
58 with the MPA associations, although with clear discrepancies. For instance, *Phocaeicola vulgatus* was
59 negatively associated with MPA, while the association with VPA was non-significant and in the positive
60 direction. Additional adjustment for dietary variables or adiposity attenuated some of the associations. For
61 the functional profile, MPA and VPA were generally associated with lower capacity for amino acid
62 degradation.

63 **Conclusion:** Our findings suggest that sedentary behaviour and physical activity are associated with a
64 similar set of gut microbiota species and functions, but in opposite directions. Furthermore, the intensity
65 of physical activity may have specific effects on certain species of the gut microbiota.

66 Word count: 247/250

67 INTRODUCTION

68 Physical activity has well-established health benefits, including reduced risk for cardiovascular disease,
69 type 2 diabetes,^{1,2} and psychiatric conditions like depression.³ Conversely, sedentary behaviour, defined
70 as sitting or non-sleep lying activities with low energy expenditure, is associated with increased risk of
71 type 2 diabetes and cardiovascular mortality.⁴⁻⁶ Some studies have though indicated that the risks
72 attributed to sedentary behaviour could be substantially attenuated by physical activity at high
73 intensities.⁷⁻⁹

74 The gut microbiota is a community of microorganisms within the gastrointestinal tract that
75 interacts with the host.¹⁰ Evidence suggests that the gut microbiota plays a role in the development of type
76 2 diabetes and cardiovascular diseases.¹¹⁻¹³ Moreover, the gut microbiota may influence brain homeostasis
77 through the microbiota-gut-brain axis, which includes microbe-produced neurotransmitters and other
78 molecules that can affect the central nervous system via neuronal pathways or the immune system.¹⁴

79 Regular physical activity may affect the gut microbiota through various mechanisms, including
80 modulation of the gut immune system, reduction in the intestinal transit time¹⁵ and splanchnic blood flow,
81 transient increase in the intestinal permeability,¹⁶ and modulation of the enterohepatic circulation of bile
82 acids.¹⁷ Smaller intervention studies in specific populations have reported changes to the gut microbiota
83 composition after structured exercise, with a decrease in *Clostridium* and *Blautia* and an increase in
84 *Bifidobacterium* and *Dorea*.¹⁸⁻²⁰ In population-based studies, self-reported moderate and vigorous-
85 intensity physical activity have been associated with higher gut microbiota diversity²¹, and sedentary
86 behaviour with increased abundance of *Roseburia hominis* and *Erysipelatoclostridium* species.²²
87 However, these studies had limited microbiota taxonomic resolution and used self-reported physical
88 activity information, which may be affected by reporting bias.²³ Therefore, there is a need for larger
89 population-based studies that combine sensor-based physical activity assessment with gut microbiota
90 profiled in higher taxonomic resolution. Here, we aimed to identify associations of accelerometer-based
91 sedentary behaviour and physical activity with the gut microbiota analysed with deep shotgun
92 metagenomics, in 8507 participants, using cross-sectional data from the Swedish CARDIOpulmonary
93 BioImage Study (SCAPIS).

94 METHODS

95 Study Population

96 The SCAPIS cohort includes 30 154 women and men aged 50 to 65 enrolled between 2013 and 2018 from
97 six different regions in Sweden.²⁴ Baseline investigation included wear of a hip-accelerometer for 7 days.

98 Participants from Malmö and Uppsala were also invited to provide faecal samples for metagenomic
99 analysis (n = 9831). The Swedish Ethical Review Authority approved the SCAPIS study (DNR 2010-228-
100 31M) and the present study (DNR 2018-315 with amendment 2020-06597). All participants provided
101 written informed consent.

102

103 **Accelerometer data processing**

104 Accelerometer data was processed using a previously described protocol²⁵ with the added exclusion of
105 registrations during estimated bedtime. For details, see supplemental methods. In brief, participants were
106 instructed to wear the ActiGraph (Pensacola, USA) tri-axial accelerometer over the hip for 7 consecutive
107 days, except during sleep and water-based activities. Raw data was transformed into counts per minute
108 (cpm) over 60s epochs. Sedentary time (SED), low-intensity physical activity (LIPA), moderate-intensity
109 physical activity (MPA), and vigorous-intensity physical activity (VPA) were defined as <200 cpm, 200
110 – 2689 cpm, 2690 – 6166 cpm, and ≥ 6167 cpm, respectively. Non-wear time was defined as periods of
111 ≥ 60 min with zero counts, with intervals of maximum two minutes of 0 – 199 cpm. A valid day was
112 defined as a day with >10 hours of wear time. We excluded 467 participants who had <4 valid days. The
113 percentage of time in SED, MPA, or VPA were calculated by dividing the time spent in each activity by
114 the total wear time.²⁵ Because SED and LIPA were highly negatively correlated (Spearman's correlation
115 = -0.95, supplemental figure 1), we chose to exclude LIPA from the subsequent analyses.

116

117 **Faecal metagenomics**

118 The gut microbiota was assessed through metagenomic analyses of faecal samples using a previously
119 described protocol.²⁶ In summary, faecal samples were collected at home, kept in the home freezer until
120 the second study visit, and stored at -80°C until shipped to Clinical Microbiomics A/S (Copenhagen,
121 Denmark) for DNA extraction, library preparation, sequencing with Illumina Novaseq 6000 (Illumina, CA,
122 USA), bioinformatics processing, and taxonomic annotation. Metagenomic species were defined by
123 binning of co-abundance genes, as previously described.²⁷ Alpha diversity, a metric of the diversity of
124 species and the homogeneity of their abundance within a sample²⁸ was estimated using the Shannon
125 diversity index. Beta diversity, a metric of the composition dissimilarity between samples, was estimated
126 using the Bray-Curtis dissimilarity.²⁹ These estimations were performed with R package *vegan* on
127 sequence data that was rarefied to 210 430 read-pairs for all samples to account for the differences in
128 sequencing depth. The functional potential of the gut microbiota was defined by the abundance of genes

129 of the manually curated gut metabolic modules³⁰ (GMM) and microbiota-gut-brain modules¹⁴ (MGB).
130 GMMs capture the microbiota metabolic potential and anaerobic fermentation capacity³⁰, while MGBs
131 comprise the capacity to degrade or produce potentially neuroactive compounds.¹⁴ To calculate the
132 abundance of respective modules, we used the R package Omixer-RPM v.0.3.2³¹ considering a minimum
133 module coverage of 66.6%. Analyses were focused on species identity, GMMs, and MGBs with a relative
134 abundance >0.01% in $\geq 1\%$ of individuals, resulting in 1336 species, 76 GMMs, and 28 MGBs for further
135 analysis. Before statistical analysis, species, GMM, and MGB were $\log(x+1)$ transformed, where x
136 denotes the relative abundance. For details, see supplemental methods.

137

138 **Covariates**

139 Covariate information was obtained from the SCAPIS questionnaire, and anthropometric measurements
140 and fasting plasma samples collected during study site visit. Mean daily intake of alcohol, fibre, added
141 sugar, protein, carbohydrate, fat, and total energy were estimated from the food frequency
142 questionnaire.^{32,33} Fibre, protein, carbohydrate, fat, and added sugar intake were transformed to
143 percentages of non-alcohol energy intake. We categorized smoking status as current, former, or non-
144 smoker, and highest achieved education level as incomplete compulsory, complete compulsory,
145 secondary, or university education. Country of birth was grouped as Scandinavia (Sweden, Denmark,
146 Norway, or Finland), non-Scandinavian Europe, Asia, and other countries. Information on medications
147 prescribed for hypertension, type 2 diabetes, dyslipidaemia, depression, and anxiety within six months
148 before the first site visit was retrieved from the Swedish Prescribed Drug Register (supplemental
149 methods). Proton-pump inhibitor usage was defined as a measurable level of omeprazole or
150 pantoprazole metabolites in plasma. Antibiotic use was defined as a dispensed prescription (Anatomical
151 Therapeutic Chemical code J01) up to three months before the first visit.

152 **Statistical method**

153 *Model specification.* Based on current literature^{21,25,34}, we created a directed acyclic graph prior to the
154 analysis phase using the DAGitty tool (www.daggitty.net, supplemental figure 2), and selected potential
155 confounders for the main model based on the d-separation criteria.³⁵ The main model comprised age, sex,
156 alcohol intake, smoking, education, country of birth, study site, and month of accelerometer wear. We
157 also adjusted for technical variation covariates including total wear time, percentage of wear time on
158 weekend, and faecal DNA extraction plate. To identify associations independent of dietary intake or

159 adiposity, we explored two additional models: (1) Diet-adjusted model: additional adjustment for total
160 energy intake and intake from added sugars, proteins, carbohydrates, and fibre, or (2) BMI/WHR-adjusted
161 model: additional adjustment for body mass index (BMI) and waist-hip ratio (WHR). Statistical analyses
162 were conducted in R version 4.1.1 (<http://www.r-project.org>).

163 *Alpha and beta diversity.* For alpha diversity, we applied linear regression models with Shannon
164 index as the dependent variable and SED, MPA, and VPA separately as independent variables, while
165 adjusting for covariates. Regression coefficients presented represent standard-deviation changes in SED,
166 MPA, or VPA. For beta diversity, we used distance-based redundancy analysis to estimate the proportion
167 of the interindividual gut microbiota dissimilarity explained by SED, MPA, and VPA. The analyses
168 accounted for the covariates by using the parameter “condition” in the function “capscale” (R package
169 *vegan*) and p-values were calculated based on 9999 permutations.

170 *Species, gut metabolic modules, and microbiota-gut-brain modules.* To identify microbiota
171 features associated with physical activity overall, we applied a series of linear regression models with each
172 species, GMM, and MGB introduced as the dependent variable, and SED, MPA, and VPA jointly
173 introduced as independent variables together with the main model covariates. We used the likelihood ratio
174 test to compare these models to an alternative model that only contained the covariates. To control for
175 multiple testing, we applied the Benjamini-Hochberg method with a 5% false discovery rate and reported
176 significance as q-values.³⁶ The species, GMMs, and MGBs identified (q-value <0.05) were subsequently
177 evaluated in models where SED, MPA, and VPA were introduced separately as an independent variable
178 while adjusting for main model covariates, as well as for the diet-adjusted model and the BMI/WHR-
179 adjusted model. To identify associations potentially caused by single influential observations, we
180 calculated dfbetas for the main model. If removing the observation with the highest dfbeta resulted in a
181 change in the direction of the association or a p-value ≥ 0.05 , we discarded the association. Lastly,
182 remaining species were examined in two sensitivity analyses: (1) additional adjustment for use of proton-
183 pump inhibitors and medication for hypertension, type 2 diabetes, dyslipidaemia, anxiety, and/or
184 depression; (2) exclusion of participants that were prescribed antibiotic treatment within the last three
185 months.

186 **RESULTS**

187 **Study population**

188 The study population consisted of 4197 participants from Malmö and 4310 participants from Uppsala with
 189 valid accelerometer data, faecal metagenomics data, and complete information on the main model
 190 covariates (Table 1).

191
 192 **Table 1. Characteristics of the study population stratified by study site.**

| | All | Malmö | Uppsala |
|--|------------------|------------------|------------------|
| | N=8507 | N=4197 | N=4310 |
| Age, years | 57.6 [53.8;61.4] | 57.4 [53.7;61.2] | 57.8 [53.9;61.5] |
| Women, N (%) | 4533 (53.3%) | 2278 (54.3%) | 2255 (52.3%) |
| Accelerometer: | | | |
| Wear time in sedentary, % | 55.5 [48.5;62.0] | 55.6 [48.7;62.3] | 55.4 [48.4;61.7] |
| Wear time in moderate-intensity, % | 4.7 [3.2;6.6] | 4.3 [2.8;6.3] | 5.1 [3.6;6.9] |
| Wear time in vigorous-intensity, % | 0.06 [0.00;0.48] | 0.03 [0.00;0.37] | 0.10 [0.02;0.61] |
| Valid days, days | 7 [6;7] | 7 [6;7] | 7 [7;7] |
| Wear time/day, h | 14.5 [13.7;15.4] | 14.1 [13.3;14.8] | 15.0 [14.1;16.0] |
| Wear time registered during weekends, % | 28.6 [28.6;28.6] | 28.6 [28.6;28.6] | 28.6 [28.6;28.6] |
| Alcohol intake, g/day | 5.4 [1.8;10.3] | 5.2 [1.6;10.3] | 5.6 [1.9;10.2] |
| Smoking, N (%): | | | |
| Never | 4379 (51.5%) | 1834 (43.7%) | 2545 (59.0%) |
| Former | 3046 (35.8%) | 1650 (39.3%) | 1396 (32.4%) |
| Current | 1082 (12.7%) | 713 (17.0%) | 369 (8.6%) |
| Education, N (%): | | | |
| Compulsory^a | 784 (9.2%) | 462 (11.0%) | 322 (7.5%) |
| Upper secondary | 3790 (44.6%) | 1998 (47.6%) | 1792 (41.6%) |
| University | 3933 (46.2%) | 1737 (41.4%) | 2196 (51.0%) |
| Country of birth, N (%): | | | |
| Scandinavia^b | 7183 (84.4%) | 3308 (78.8%) | 3875 (89.9%) |
| Europe | 752 (8.8%) | 584 (13.9%) | 168 (3.9%) |
| Asia | 382 (4.5%) | 210 (5.0%) | 172 (4.0%) |
| Other | 190 (2.2%) | 95 (2.3%) | 95 (2.2%) |
| BMI and WHR | | | |
| | N=8503 | N=4193 | N=4310 |
| BMI, kg/m² | 26.4 [24.0;29.4] | 26.6 [24.1;29.6] | 26.3 [24.0;29.1] |
| Waist-hip ratio | 0.9 [0.9;1.0] | 0.9 [0.8;1.0] | 0.9 [0.9;1.0] |
| Dietary variables | | | |
| | N=8416 | N=4144 | N=4272 |
| Total energy intake (kcal/day) | 1594 [1239;2049] | 1572 [1221;2059] | 1611 [1268;2040] |

| | | | |
|--|------------------|------------------|------------------|
| Protein, E% | 16.6 [14.7;18.6] | 16.5 [14.5;18.7] | 16.7 [15.0;18.6] |
| Carbohydrate, E% | 43.8 [39.4;48.0] | 43.9 [39.2;48.2] | 43.8 [39.5;47.9] |
| Fat, E% | 37.2 [33.3;41.1] | 37.3 [33.3;41.3] | 37.1 [33.3;40.8] |
| Fibre, E% | 2.3 [1.8;2.9] | 2.3 [1.8;2.9] | 2.4 [1.9;2.9] |
| Added Sugar, E% | 7.3 [4.9;10.6] | 7.3 [4.8;10.9] | 7.2 [5.1;10.3] |
| Sensitivity analysis – medication use | N=7560 | N=3295 | N=4265 |
| Type 2 diabetes, N (%) | 301 (4.0%) | 145 (4.4%) | 156 (3.7%) |
| Hypertension, N (%) | 1823 (24.1%) | 830 (25.2%) | 993 (23.3%) |
| Dyslipidaemia, N (%) | 798 (10.6%) | 380 (11.5%) | 418 (9.8%) |
| Depression, N (%) | 786 (10.4%) | 342 (10.4%) | 444 (10.4%) |
| Anxiety, N (%) | 278 (3.7%) | 143 (4.3%) | 135 (3.2%) |
| Proton pump inhibitors, N (%) | 285 (3.8%) | 155 (4.7%) | 130 (3.0%) |
| Sensitivity analysis – antibiotic use | N=8507 | N=4197 | N=4310 |
| Antibiotic last 3 months, N (%) | 498 (5.9%) | 270 (6.5%) | 228 (5.3%) |

193 Continuous variables described as median and 25th and 75th percentiles. Categorical variables described
 194 as absolute numbers and percentages. WHR: Waist-hip ratio. ^a Incomplete or complete compulsory
 195 education. ^b Sweden, Denmark, Finland or Norway. E%: percentages of non-alcohol energy intake.

196

197 **Sedentary behaviour and physical activity associations with alpha diversity and beta diversity**

198 We found that SED was associated with lower alpha diversity ($\beta = -0.020$, p-value = 1.2×10^{-5}), whereas
 199 MPA and VPA were associated with higher alpha diversity (MPA: $\beta = 0.024$, p-value = 5.5×10^{-8} ; VPA: β
 200 = 0.032, p-value = 1.7×10^{-12}). Similar results were found in the diet-adjusted model. In the BMI/WHR-
 201 adjusted model, only MPA and VPA were associated with alpha diversity (MPA: $\beta = 0.017$, p-value =
 202 1.3×10^{-4} ; VPA: $\beta = 0.022$, p-value = 1.4×10^{-6}).

203 To evaluate the contribution of sedentary behaviour and physical activity on the interindividual
 204 variation of the gut microbiota composition, we performed distance-based redundancy analysis on the
 205 Bray-Curtis dissimilarity matrix. After conditioning on the main model covariates, the adjusted R² for SED
 206 was 0.083%, for MPA 0.084%, and for VPA 0.081%. The adjusted R² for SED, MPA and VPA jointly
 207 was 0.188% in the main model, 0.141% in the diet-adjusted model, and 0.154% in the BMI/WHR-adjusted
 208 model (all p-values = 1×10^{-4}). For comparison, the R² for BMI without accounting for other variables was
 209 0.76%, for fibre intake 0.39%, and for the dietary variables combined 0.69%.

210

211 **Sedentary behaviour and physical activity were associated with a large number of the species**
 212 **present in the human gut**

213 We identified 345 species associated with physical activity (supplemental table 1). Among these, SED
214 was associated with 224 species (q-value <0.05), MPA with 245 species, and VPA with 228 species.
215 However, we found that six associations for SED, 16 associations for MPA, and 31 associations for VPA
216 were caused by single influential observations (supplemental table 2). Overall, associations for SED and
217 MPA mirrored each other (figure 1). The Pearson correlation between the main model regression
218 coefficients for SED and MPA was -0.92, while between SED and VPA was -0.67. Amongst the largest
219 coefficients, SED was positively, and MPA and VPA were negatively associated with *Blautia obeum*
220 (unique identifier HG3A.0001) and *Ruminococcus torques*. Additionally, SED was negatively and MPA
221 was positively associated with *Prevotella copri* and an unclassified *Eubacteriales* species (identifier
222 HG3A.0100). The largest positive coefficients for VPA were with four unclassified *Eubacteriales* species
223 (HG3A.0125, HG3A.0100, HG3A.0062, HG3A.0162).

224 Regression coefficients for MPA and VPA were in largely consistent in direction and magnitude
225 (Pearson correlation = 0.67). However, for specific species, there were marked differences in the
226 association with MPA or VPA. For instance, *P. copri* and *Faecalibacterium prausnitzii* (HG3A.0025)
227 were among the largest positive coefficients for MPA, but were not associated with VPA. Other
228 differences include *Phocaeicola vulgatus* and *Bacteroides uniformis*, which were negatively associated
229 with MPA, but not with VPA (figure 1).

230 The main model and the diet-adjusted model regression coefficients were highly correlated
231 (Pearson correlation >0.99 for SED, MPA, and VPA), although generally attenuated in diet-adjusted
232 model (supplemental table 2 and supplemental figure 3). The BMI/WHR-adjusted model also produced
233 similar coefficients for MPA and VPA compared to the main model coefficients (Pearson correlation
234 >0.97). However, regression coefficients for SED from the BMI/WHR model and from the main model
235 were not as strongly correlated (Pearson correlation = 0.89). Certain main model associations for SED
236 were substantially attenuated in the BMI/WHI model, especially for *B. obeum* (HG3A.0001) which was
237 no longer associated with SED (figure 1 and supplemental table 2). On the other hand, the negative
238 association between SED and *F. prausnitzii* (HG3A.0025) became stronger in the BMI/WHR model.

239 To investigate the potential effect of medication usage on the associations identified in the main
240 model (q-value <0.05), we performed further adjustment for use of proton-pump inhibitors and
241 medications for hypertension, type 2 diabetes, dyslipidaemia, anxiety, and/or depression. After this
242 adjustment, SED was associated (p-value < 0.05) with 187 of the 224 species associated in the main model,
243 MPA with 205 of 245, and VPA with 169 of 228 species. In the sensitivity analysis removing 498

244 participants who had used any antibiotic in the last 3 months, SED was associated (p -value < 0.05) with
245 215 species, MPA with 221, and VPA with 195 (supplemental table 3). The direction of the associations
246 did not change.

247

248 **Sedentary behaviour and physical activity are associated with the gut microbiota functional** 249 **potential**

250 The functional potential was determined by the abundance of previously curated functional modules,
251 which include modules of carbohydrate, amino acid, or lipid degradation,³⁰ and modules of the microbiota-
252 gut-brain axis.¹⁴ We identified 74 functional modules associated with physical activity (supplemental table
253 4). Out of 17 modules of carbohydrate degradation, SED was associated with lower or higher abundance
254 of 12 modules in the main model (figure 2 and supplemental table 5). The strongest negative association
255 was between SED and degradation of arabinoxylan, which is a dietary fibre. Even in the diet-adjusted
256 model, SED was associated with degradation of arabinoxylan. Out of the 26 modules of amino acid
257 degradation, SED was associated with higher abundance of 17 in the main model. In the diet-adjusted
258 model, SED was associated with higher abundance of 15 modules of amino acid degradation, whereas
259 MPA was associated with lower abundance of 14, and VPA with lower abundance of 7.

260 Among the modules of the microbiota-gut-brain axis, the largest main model coefficient was found
261 for heat-shock protein ClpB, which was negatively associated with SED, and positively associated with
262 MPA and VPA (figure 3 and supplemental table 5). Comparing main model and BMI/WHR-adjusted
263 model associations, we observed marked differences for the butyrate synthesis I module. In the main
264 model, VPA was positively associated with butyrate synthesis I, while no association was detected for
265 SED or MPA. In the BMI/WHR-adjusted model, we could not detect the association for VPA; instead,
266 SED was positively and MPA was negatively associated with this module. No association was driven by
267 a single influential observation.

268

269 **DISCUSSION**

270 In this largest-to-date population-based study of physical activity with gut microbiome encompassing
271 8507 individuals, we found that, from the 1336 species investigated, 345 (25.8%) were associated with
272 physical activity. Overall, SED and MPA were associated with the same set of species but with regression
273 coefficients in opposite directions. Furthermore, MPA and VPA had concordant associations with gut
274 microbiota species, although with notable exceptions. Similar results were observed after adjustment for

275 dietary variables, but some associations for SED were markedly affected by the adjustment for
276 BMI/WHR. Additionally, SED, MPA, and VPA were associated with specific microbial functions, some
277 potentially involved in the microbiota-gut-brain axis.

278

279 **The associations of sedentary behaviour and physical activity with gut microbiota species**

280 Among the strongest findings with species-level annotation, MPA was associated with higher abundance
281 of *P. copri* and *F. prausnitzii* (HG3A.0241 and HG3A.0025). Time spent in exercise has previously been
282 associated with higher *P. copri* abundance in cyclists.³⁷ Nevertheless, the associations between *P. copri*
283 and health outcomes have been inconsistent, with some studies suggesting a role in fibre fermentation and
284 improved glucose metabolism,³⁸ while others reported associations with insulin resistance³⁹ and
285 hypertension.⁴⁰ MPA and VPA had similar associations, but there were some clear exceptions. MPA was
286 associated with higher abundance of *P. copri* and *F. prausnitzii* (HG3A.0025), and lower abundance of *B.*
287 *uniformis* and *P. vulgatus*, while we could not detect the same associations for VPA. We found that VPA
288 was positively associated with *Roseburia homininis* and *F. prausnitzii* (HG3A.0241), but negatively
289 associated with another subspecies of *F. prausnitzii* (HG3A.0010). In general, *F. prausnitzii* is considered
290 to have anti-inflammatory properties⁴¹ and individuals with type 2 diabetes have been reported to have a
291 lower abundance of this bacteria.⁴² A higher abundance of *F. prausnitzii* and *R. hominis* has also been
292 reported in active premenopausal women, based on accelerometer assessment.⁴³ Both *F. prausnitzii* and
293 *R. hominis* are important producers of butyrate, which is a main energy source for colonocytes and critical
294 for gut homeostasis.⁴⁴ A previous study in a small sample of young adults has also reported an association
295 between cardiorespiratory fitness and fecal butyric acid.⁴⁵

296 In the present study, SED was associated with higher abundance of *B. obeum* (HG3A.0001 and
297 HG3A.0009), *R. torques*, *P. vulgatus*, and *Escherichia coli*. An increased abundance of the
298 *Escherichia/Shigella* taxon was also reported in sedentary individuals in the Healthy Life in an Urban
299 Setting cohort (HELIUS, N = 1334), the largest population-based study on physical activity and gut
300 microbiota until the present study.²² A higher abundance of *E. coli* has been observed in individuals with
301 atherosclerotic cardiovascular disease⁴⁶ and users of the anti-diabetes medication metformin,⁴⁷ suggesting
302 a link between physical activity, gut microbiota, and cardiometabolic diseases. Due to different microbiota
303 profiling methods, our findings cannot be directly compared with the HELIUS study. We confirmed
304 though the positive association between *P. copri* and physical activity but found a positive association
305 between VPA and *R. hominis*, which was more abundant in sedentary individuals in the HELIUS study.

306 The median VPA in our study sample was only 0.06%. A previous study has suggested that as
307 little as 15 min/week of VPA reduces the risk for all-cause mortality by 18%;⁴⁸ therefore, effects of VPA
308 could be expected even with little time spent in these activities. Vigorous-intensity activities include
309 running and high-intensity sports, while moderate-intensity activities cover a wider range of activities,
310 including brisk walking and bicycling at low speed, but also household chores.⁴⁹ Future studies could
311 further investigate the associations of subcategories of MPA with the gut microbiota.

312

313 **Adjustment for BMI and WHR had a pronounced effect on the associations observed between SED** 314 **and species of the gut microbiota**

315 In the models additionally adjusted for dietary variables or for BMI/WHR, we observed attenuated
316 coefficients. The largest effect was observed for associations with SED after adjustment for BMI/WHR.
317 This attenuation could be caused by BMI acting as a confounder or a mediator. However, for 14 species,
318 including *F. prausnitzii* (HG3A.0025), the association with SED became stronger after BMI/WHR
319 adjustment. This could be due to a negative confounding effect of adiposity, which masked the true
320 associations in the main model, or that the adjustment for BMI/WHR led to collider bias. The greater
321 impact of adjusting for BMI/WHR on SED coefficients than on MPA or VPA coefficients aligns with
322 previous Mendelian randomization analyses, which have demonstrated stronger bidirectional effects
323 between SED and BMI than between physical activity time and BMI.^{50,51}

324

325 **Sedentary behaviour associated with higher gut microbiota capacity to degrade amino acids and to** 326 **produce certain short-chain fatty acids**

327 With regards to the functional potential of the gut microbiota, we found that SED was associated with
328 lower capacity for fibre degradation and higher capacity for amino acid degradation. Likewise, a previous
329 study has reported an increased abundance of carbohydrate degradation pathways in athletes.⁵² These
330 findings could be due to lower fibre content in the diet of sedentary individuals, which we aimed to address
331 by adjusting for fibre intake. A lower availability of fermentable carbohydrates in the distal gut can result
332 in a reduction in saccharolytic bacteria and an increase in proteolytic bacteria.³⁰ Intervention studies with
333 standardized diet would be needed to disentangle physical activity associations from associations due to
334 differences dietary intakes.

335 In our main model results, MPA was negatively associated with modules for short-chain fatty acids
336 synthesis, more specifically acetate and propionate synthesis, while SED was positively associated with

337 these modules. Conversely, six weeks of exercise training has been reported to increase the abundance of
338 bacterial genes involved in propionate synthesis.⁵³ The same study also reported a BMI-dependent
339 exercise-induced increase in bacterial genes of butyrate synthesis. In our study, VPA was positively
340 associated with butyrate synthesis in the main model, while in the BMI/WHR-adjusted model, it was SED
341 that was positively associated with this same module. For other modules in the microbiota-gut-brain axis,
342 SED was negatively and MPA positively associated with the module for the heat-shock protein ClpB that
343 has been suggested to influence appetite regulation.⁵⁴ SED was also associated with higher abundance of
344 the GABA synthesis module and higher abundance of *E. coli*, one of the main GABA-producing bacteria
345 in the gut.⁵⁵ Although lower plasma levels of GABA have been described in individuals with depression,⁵⁶
346 recent studies found elevated levels in a mixed sample of medicated and non-medicated individuals with
347 major depressive disorder.^{57,58}

348

349 **Strengths and limitations**

350 The strengths of this study are the accelerometer-based assessment of sedentary behaviour and physical
351 activity phenotypes, the large sample of participants from the general population, and the high taxonomic
352 resolution microbiome data. Moreover, we had access to comprehensive information on potential
353 confounders. Some limitations apply. One concern is whether the associations described reflect the
354 lifestyle of health-conscious individuals. Despite covariate adjustments, it is implausible to capture all
355 dimensions of dietary intake and residual confounding may remain. Accelerometers measure absolute
356 physical activity intensity, but relative intensity could be more clinically relevant. Standardized
357 accelerometer cut-offs can misclassify low and high fitness individuals. Estimating relative intensity
358 would though require data on individual maximal capacity, such as maximal oxygen uptake.⁵⁹
359 Additionally, social desirability bias and adherence to the study instructions could affect accelerometer-
360 based assessment. However, these misclassifications would be non-differential. The accelerometer needed
361 to be removed during water-based activity and may also underestimate physical activity intensity during
362 cycling, upper body activities, and weight-lifting.²⁵ Our study was conducted in a Swedish population
363 aged 50-65, thus generalizability to other populations is limited. Additionally, we cannot assess the
364 direction of the associations using cross-sectional data. It is suggested that gut microbiota may favour the
365 practice of exercise by enhancing the enjoyment of physical activity⁶⁰ or improving the host
366 performance.⁶¹ The gut microbiota can also affect adiposity,⁶² which is negatively associated with physical

367 activity. Lastly, the use of relative abundances incur on the issues of compositional data, which can
368 produce false-positive associations.⁶³

369 In summary, sedentary behaviour and physical activity were associated with a large number of gut
370 microbiota species and functional modules. Our findings can be used to guide research on the interplay
371 between physical activity, the gut microbiota composition, and health outcomes.

372 REFERENCES

- 373 1. Aune, D., Norat, T., Leitzmann, M., Tonstad, S. & Vatten, L. J. Physical activity and the risk of type
374 2 diabetes: a systematic review and dose-response meta-analysis. *Eur. J. Epidemiol.* **30**, 529–542
375 (2015).
- 376 2. Lear, S. A. *et al.* The effect of physical activity on mortality and cardiovascular disease in 130 000
377 people from 17 high-income, middle-income, and low-income countries: the PURE study. *Lancet*
378 *Lond. Engl.* **390**, 2643–2654 (2017).
- 379 3. Brown, W. J., Ford, J. H., Burton, N. W., Marshall, A. L. & Dobson, A. J. Prospective Study of
380 Physical Activity and Depressive Symptoms in Middle-Aged Women. *Am. J. Prev. Med.* **29**, 265–272
381 (2005).
- 382 4. Patterson, R. *et al.* Sedentary behaviour and risk of all-cause, cardiovascular and cancer mortality, and
383 incident type 2 diabetes: a systematic review and dose response meta-analysis. *Eur. J. Epidemiol.* **33**,
384 811–829 (2018).
- 385 5. Wilmot, E. G. *et al.* Sedentary time in adults and the association with diabetes, cardiovascular disease
386 and death: systematic review and meta-analysis. *Diabetologia* **55**, 2895–2905 (2012).
- 387 6. Teychenne, M., Costigan, S. A. & Parker, K. The association between sedentary behaviour and risk
388 of anxiety: a systematic review. *Bmc Public Health* **15**, 513 (2015).
- 389 7. Ekelund, U. *et al.* Do the associations of sedentary behaviour with cardiovascular disease mortality
390 and cancer mortality differ by physical activity level? A systematic review and harmonised meta-
391 analysis of data from 850 060 participants. *Br. J. Sports Med.* **53**, 886–894 (2019).
- 392 8. Ekelund, U. *et al.* Does physical activity attenuate, or even eliminate, the detrimental association of
393 sitting time with mortality? A harmonised meta-analysis of data from more than 1 million men and
394 women. *The Lancet* **388**, 1302–1310 (2016).
- 395 9. Ekelund, U. *et al.* Joint associations of accelerometer measured physical activity and sedentary time
396 with all-cause mortality: a harmonised meta-analysis in more than 44 000 middle-aged and older
397 individuals. *Br. J. Sports Med.* **54**, 1499–1506 (2020).

- 398 10. Qin, J. *et al.* A human gut microbial gene catalogue established by metagenomic sequencing. *Nature*
399 **464**, 59–65 (2010).
- 400 11. Molinaro, A. *et al.* Imidazole propionate is increased in diabetes and associated with dietary patterns
401 and altered microbial ecology. *Nat. Commun.* **11**, 5881 (2020).
- 402 12. Witkowski, M., Weeks, T. L. & Hazen, S. L. Gut Microbiota and Cardiovascular Disease. *Circ. Res.*
403 **127**, 553–570 (2020).
- 404 13. Pinto, Y. *et al.* Gestational diabetes is driven by microbiota-induced inflammation months before
405 diagnosis. *Gut* gutjnl-2022-328406 (2023) doi:10.1136/gutjnl-2022-328406.
- 406 14. Valles-Colomer, M. *et al.* The neuroactive potential of the human gut microbiota in quality of life and
407 depression. *Nat. Microbiol.* **4**, 623–632 (2019).
- 408 15. Stanich, P. P., Peck, J., Murphy, C., Porter, K. M. & Meyer, M. M. Physical activity during video
409 capsule endoscopy correlates with shorter bowel transit time. *Endosc. Int. Open* **5**, E856–E860 (2017).
- 410 16. van Wijck, K. *et al.* Exercise-induced splanchnic hypoperfusion results in gut dysfunction in healthy
411 men. *PloS One* **6**, e22366 (2011).
- 412 17. Wertheim, B. C. *et al.* Physical activity as a determinant of fecal bile acid levels. *Cancer Epidemiol.*
413 *Biomark. Prev. Publ. Am. Assoc. Cancer Res. Cosponsored Am. Soc. Prev. Oncol.* **18**, 1591–1598
414 (2009).
- 415 18. Donati Zeppa, S. *et al.* Nine weeks of high-intensity indoor cycling training induced changes in the
416 microbiota composition in non-athlete healthy male college students. *J. Int. Soc. Sports Nutr.* **18**, 74
417 (2021).
- 418 19. Kern, T. *et al.* Structured exercise alters the gut microbiota in humans with overweight and obesity—
419 A randomized controlled trial. *Int. J. Obes.* **44**, 125–135 (2020).
- 420 20. Motiani, K. K. *et al.* Exercise Training Modulates Gut Microbiota Profile and Improves Endotoxemia.
421 *Med. Sci. Sports Exerc.* **52**, 94–104 (2020).
- 422 21. Manor, O. *et al.* Health and disease markers correlate with gut microbiome composition across
423 thousands of people. *Nat. Commun.* **11**, 5206 (2020).
- 424 22. Houttu, V. *et al.* Physical Activity and Dietary Composition Relate to Differences in Gut Microbial
425 Patterns in a Multi-Ethnic Cohort-The HELIUS Study. *Metabolites* **11**, 858 (2021).
- 426 23. Adams, S. A. *et al.* The effect of social desirability and social approval on self-reports of physical
427 activity. *Am. J. Epidemiol.* **161**, 389–398 (2005).

- 428 24. Bergström, G. *et al.* Prevalence of Subclinical Coronary Artery Atherosclerosis in the General
429 Population. *Circulation* **144**, 916–929 (2021).
- 430 25. Ekblom-Bak, E. *et al.* Accelerometer derived physical activity patterns in 27.890 middle-aged adults:
431 The SCAPIS cohort study. *Scand. J. Med. Sci. Sports* **32**, 866–880 (2022).
- 432 26. Dekkers, K. F. *et al.* An online atlas of human plasma metabolite signatures of gut microbiome
433 composition. *Nat. Commun.* **13**, 5370 (2022).
- 434 27. Nielsen, H. B. *et al.* Identification and assembly of genomes and genetic elements in complex
435 metagenomic samples without using reference genomes. *Nat. Biotechnol.* **32**, 822–828 (2014).
- 436 28. Spellerberg, I. F. & Fedor, P. J. A tribute to Claude Shannon (1916–2001) and a plea for more rigorous
437 use of species richness, species diversity and the ‘Shannon–Wiener’ Index. *Glob. Ecol. Biogeogr.* **12**,
438 177–179 (2003).
- 439 29. Bray, J. R. & Curtis, J. T. An Ordination of the Upland Forest Communities of Southern Wisconsin.
440 *Ecol. Monogr.* **27**, 325–349 (1957).
- 441 30. Vieira-Silva, S. *et al.* Species-function relationships shape ecological properties of the human gut
442 microbiome. *Nat. Microbiol.* **1**, 16088 (2016).
- 443 31. Darzi, Y., Falony, G., Vieira-Silva, S. & Raes, J. Towards biome-specific analysis of meta-omics data.
444 *ISME J.* **10**, 1025–1028 (2016).
- 445 32. Christensen, S. E. *et al.* Relative Validity of Micronutrient and Fiber Intake Assessed With Two New
446 Interactive Meal- and Web-Based Food Frequency Questionnaires. *J. Med. Internet Res.* **16**, e59
447 (2014).
- 448 33. Christensen, S. E. *et al.* Two New Meal- and Web-Based Interactive Food Frequency Questionnaires:
449 Validation of Energy and Macronutrient Intake. *J. Med. Internet Res.* **15**, e109 (2013).
- 450 34. Aasmets, O., Krigul, K. L., Lüll, K., Metspalu, A. & Org, E. Gut metagenome associations with
451 extensive digital health data in a volunteer-based Estonian microbiome cohort. *Nat. Commun.* **13**, 869
452 (2022).
- 453 35. Pearl, J. Causal Diagrams for Empirical Research. *Biometrika* **82**, 669–688 (1995).
- 454 36. Benjamini, Y. & Hochberg, Y. Controlling the False Discovery Rate: A Practical and Powerful
455 Approach to Multiple Testing. *J. R. Stat. Soc. Ser. B Methodol.* **57**, 289–300 (1995).
- 456 37. Petersen, L. M. *et al.* Community characteristics of the gut microbiomes of competitive cyclists.
457 *Microbiome* **5**, 98 (2017).

- 458 38. Kovatcheva-Datchary, P. *et al.* Dietary Fiber-Induced Improvement in Glucose Metabolism Is
459 Associated with Increased Abundance of *Prevotella*. *Cell Metab.* **22**, 971–982 (2015).
- 460 39. Pedersen, H. K. *et al.* Human gut microbes impact host serum metabolome and insulin sensitivity.
461 *Nature* **535**, 376–381 (2016).
- 462 40. Li, J. *et al.* Gut microbiota dysbiosis contributes to the development of hypertension. *Microbiome* **5**,
463 14 (2017).
- 464 41. Breyner, N. M. *et al.* Microbial Anti-Inflammatory Molecule (MAM) from *Faecalibacterium*
465 *prausnitzii* Shows a Protective Effect on DNBS and DSS-Induced Colitis Model in Mice through
466 Inhibition of NF- κ B Pathway. *Front. Microbiol.* **8**, 114 (2017).
- 467 42. Qin, J. *et al.* A metagenome-wide association study of gut microbiota in type 2 diabetes. *Nature* **490**,
468 55–60 (2012).
- 469 43. Bressa, C. *et al.* Differences in gut microbiota profile between women with active lifestyle and
470 sedentary women. *PLOS ONE* **12**, e0171352 (2017).
- 471 44. Donohoe, D. R. *et al.* The Microbiome and Butyrate Regulate Energy Metabolism and Autophagy in
472 the Mammalian Colon. *Cell Metab.* **13**, 517–526 (2011).
- 473 45. Estaki, M. *et al.* Cardiorespiratory fitness as a predictor of intestinal microbial diversity and distinct
474 metagenomic functions. *Microbiome* **4**, 42 (2016).
- 475 46. Jie, Z. *et al.* The gut microbiome in atherosclerotic cardiovascular disease. *Nat. Commun.* **8**, 845
476 (2017).
- 477 47. Wu, H. *et al.* Metformin alters the gut microbiome of individuals with treatment-naive type 2 diabetes,
478 contributing to the therapeutic effects of the drug. *Nat. Med.* **23**, 850–858 (2017).
- 479 48. Ahmadi, M. N. *et al.* Vigorous physical activity, incident heart disease, and cancer: how little is
480 enough? *Eur. Heart J.* **43**, 4801–4814 (2022).
- 481 49. Ainsworth, B. E. *et al.* 2011 Compendium of Physical Activities: A Second Update of Codes and
482 MET Values. *Med. Sci. Sports Exerc.* **43**, 1575–1581 (2011).
- 483 50. Carrasquilla, G. D., García-Ureña, M., Fall, T., Sørensen, T. I. A. & Kilpeläinen, T. O. Mendelian
484 randomization suggests a bidirectional, causal relationship between physical inactivity and adiposity.
485 *eLife* **11**, e70386 (2022).
- 486 51. Wang, Z. *et al.* Genome-wide association analyses of physical activity and sedentary behavior provide
487 insights into underlying mechanisms and roles in disease prevention. *Nat. Genet.* **54**, 1332–1344
488 (2022).

- 489 52. Barton, W. *et al.* The microbiome of professional athletes differs from that of more sedentary subjects
490 in composition and particularly at the functional metabolic level. *Gut* **67**, 625–633 (2018).
- 491 53. Allen, J. M. *et al.* Exercise Alters Gut Microbiota Composition and Function in Lean and Obese
492 Humans. *Med. Sci. Sports Exerc.* **50**, 747–757 (2018).
- 493 54. Tennoune, N. *et al.* Bacterial ClpB heat-shock protein, an antigen-mimetic of the anorexigenic peptide
494 α -MSH, at the origin of eating disorders. *Transl. Psychiatry* **4**, e458 (2014).
- 495 55. Strandwitz, P. *et al.* GABA-modulating bacteria of the human gut microbiota. *Nat. Microbiol.* **4**, 396–
496 403 (2019).
- 497 56. Petty, F., Kramer, G. L., Gullion, C. M. & Rush, A. J. Low plasma gamma-aminobutyric acid levels
498 in male patients with depression. *Biol. Psychiatry* **32**, 354–363 (1992).
- 499 57. Bhandage, A. K. *et al.* Depression, GABA, and Age Correlate with Plasma Levels of Inflammatory
500 Markers. *Int. J. Mol. Sci.* **20**, 6172 (2019).
- 501 58. Pan, J.-X. *et al.* Diagnosis of major depressive disorder based on changes in multiple plasma
502 neurotransmitters: a targeted metabolomics study. *Transl. Psychiatry* **8**, 1–10 (2018).
- 503 59. Warner, A., Vanicek, N., Benson, A., Myers, T. & Abt, G. Agreement and relationship between
504 measures of absolute and relative intensity during walking: A systematic review with meta-regression.
505 *PloS One* **17**, e0277031 (2022).
- 506 60. Dohnalová, L. *et al.* A microbiome-dependent gut-brain pathway regulates motivation for exercise.
507 *Nature* **612**, 739–747 (2022).
- 508 61. Scheiman, J. *et al.* Meta-omics analysis of elite athletes identifies a performance-enhancing microbe
509 that functions via lactate metabolism. *Nat. Med.* **25**, 1104–1109 (2019).
- 510 62. Turnbaugh, P. J. *et al.* An obesity-associated gut microbiome with increased capacity for energy
511 harvest. *Nature* **444**, 1027–1031 (2006).
- 512 63. Gloor, G. B., Macklaim, J. M., Pawlowsky-Glahn, V. & Egozcue, J. J. Microbiome Datasets Are
513 Compositional: And This Is Not Optional. *Front. Microbiol.* **8**, (2017).

514

515

516

517 **Contributorship**

518 JGS, GBergström, LL, GE, JÄ, MO-M and TF obtained the funding for the study. GBaldanzi, SS-B, EEB,
519 ÖK, UH, BK, and TF planned and designed the study. GBaldanzi carried out the statistical analyses with
520 contribution from SS-B, KFD, and UH. GBaldanzi wrote the first version of the manuscript with support

521 from SS-B, BK, and TF. All authors contributed with the critical interpretation of the results and revision
522 of the manuscript.

523

524 **Funding/support**

525 Financial support was obtained in the form of grants from the European Research Council [ERC-STG-
526 2018-801965 (TF); ERC-CoG-2014-649021 (MO-M); ERC-STG-2015-679242 (JGS)], the Swedish
527 Heart-Lung Foundation [Hjärt-Lungfonden, 2019-0505 (TF); 2018-0343 (JÄ); 2020-0711 (MO-M);
528 2020-0173 (GE); 2019-0526 (JGS)], the Swedish Research Council [VR, 2019-01471 (TF), 2018-02784
529 (MO-M), 2019-01015 (JÄ), 2020-00243 (JÄ), 2019-01236 (GE), 2021-02273 (JGS), 2018-02837 (EXODIAB 2009-1039)], the Swedish Research Council for Sustainable Development [FORMAS, 2020-
531 00989 (SA)], EASD/Novo Nordisk (SA), Göran Gustafsson foundation [2016 (TF)], Axel and Signe
532 Lagerman's foundation (TF), the A.L.F. governmental grant 2018-0148 (MO-M), The Novo Nordic
533 Foundation NNF20OC0063886 (MO-M), The Swedish Diabetes Foundation DIA 2018-375 (MO-M), the
534 Skandia Risk&Hälsa, 2023 (ÖE, EEB), and governmental funding of clinical research within the Swedish
535 National Health Service (JGS). The study was also supported by the Swedish Foundation for Strategic
536 Research (LUDC-IRC 15-0067). Funding for the SCAPIS study was provided by the Swedish Heart-Lung
537 Foundation, the Knut and Alice Wallenberg Foundation, the Swedish Research Council and VINNOVA
538 (Sweden's Innovation agency), the University of Gothenburg and Sahlgrenska University Hospital,
539 Karolinska Institutet and Stockholm County council, Linköping University and University Hospital, Lund
540 University and Skåne University Hospital, Umeå University and University Hospital, Uppsala University
541 and University Hospital.

542

543 **Competing interests**

544 J.Ä. has served on the advisory boards for Astella, AstraZeneca and Boehringer Ingelheim and has
545 received lecturing fees from AstraZeneca and Novartis, all unrelated to the present work. Remaining
546 authors declare no competing interests.

547

548

549 **Acknowledgments**

550 We acknowledge the SCAPIS board for enabling the current study, along with the Swedish Heart-Lung
551 Foundation, the main funding body of SCAPIS. The computations and data handling were enabled by
552 resources in project sens2019512 provided by the National Academic Infrastructure for Supercomputing

553 in Sweden (NAISS) and the Swedish National Infrastructure for Computing (SNIC) at Uppsala
554 Multidisciplinary Center for Advanced Computational Science (UPPMAX), funded by the Swedish
555 Research Council through grant agreement no. 2018-0597 and no. 2022-06725.

556

557

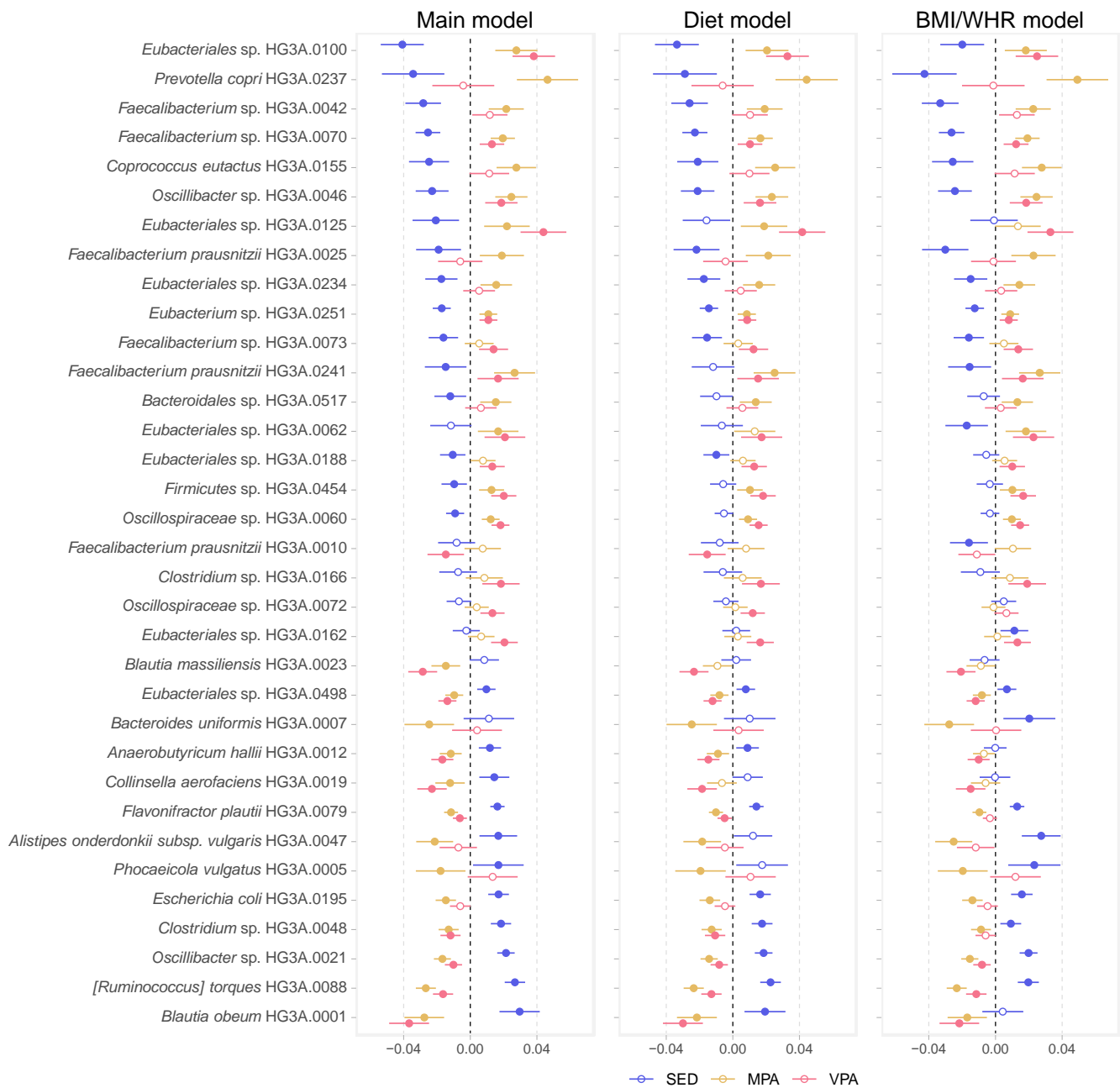
558 **Data Sharing**

559 The de-identified metagenomic sequences can be found in the European Nucleotide Archive under the
560 accession code “PRJEB51353”. The statistical analyses R codes can be found at
561 https://github.com/MolEpicUU/physicalactivity_gut. The individual-level data underlying this article
562 were provided by the SCAPIS study and are not shared publicly due to confidentiality. Data will be shared
563 upon reasonable request to the corresponding author only after permission by the Swedish Ethical Review
564 Authority (<https://etikprovningssmyndigheten.se>) and by the SCAPIS Data access board
565 (<https://www.scapis.org/data-access/>).

566

567 **FIGURES**

568 **Figure 1**



569

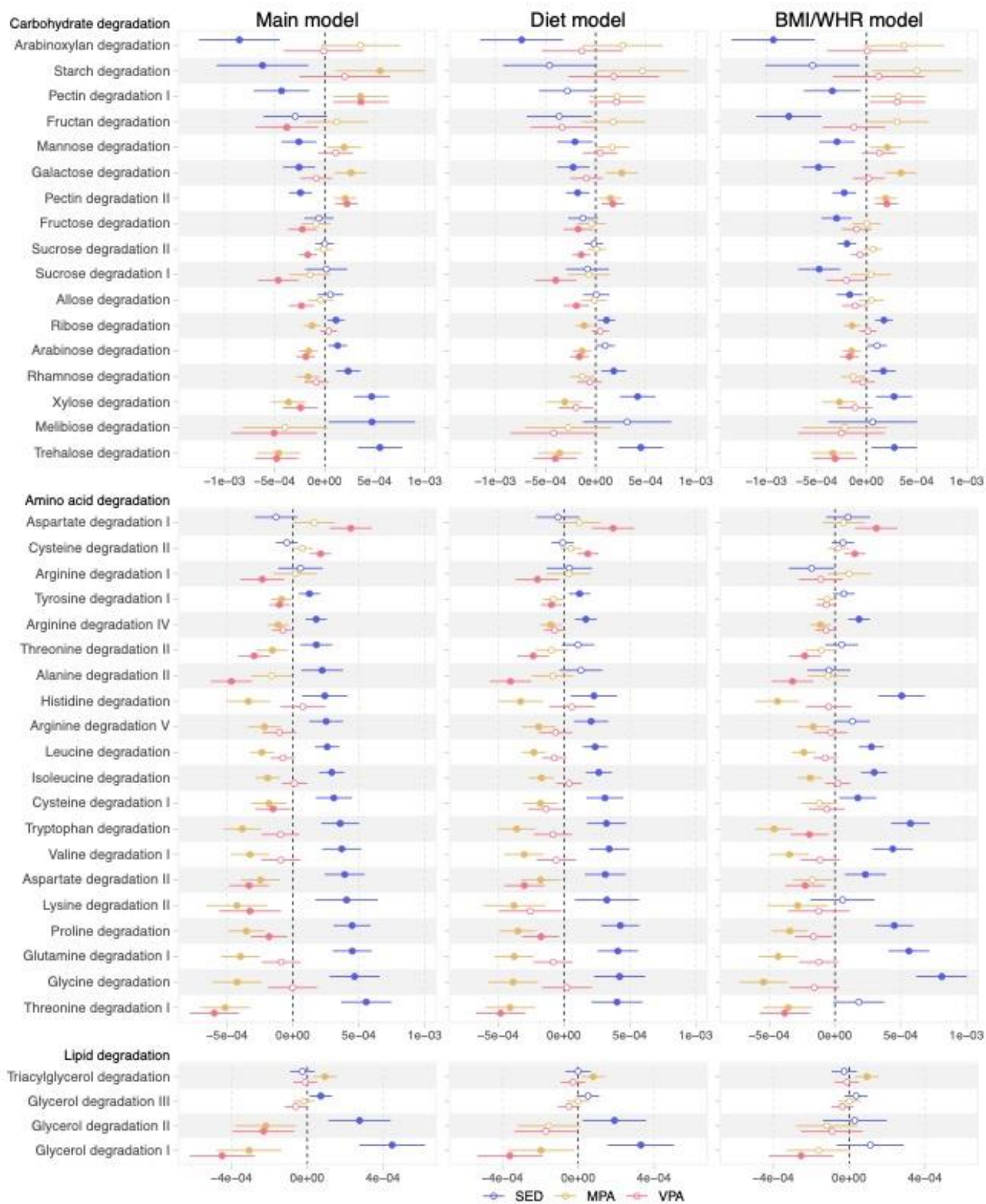
570 **Figure 1.** Top 20 associations based on the absolute regression coefficients for SED, MPA, and VPA with
 571 gut microbiota species. Effect estimates show changes in the log(relative abundance+1) of species by
 572 standard-deviation changes in SED, MPA, or VPA. Main model: adjustment for age, sex, alcohol intake,
 573 smoking, education, country of birth, study site, month of accelerometer wear, total accelerometer wear
 574 time, percentage of wear time on weekend, and fecal DNA extraction plate. Diet model: main model with
 575 additional adjustment for total energy intake, and percentage of energy intake from carbohydrates, protein,

576 fibers, and added sugars. BMI/WHR model: main model with additional adjustment for BMI and waist-
577 hip ratio. Circles are the regression coefficients and bars represent the 95% confidence intervals. Filled
578 circles are associations with q-values <0.05. SED: percentage of time in sedentary behaviour; MPA:
579 percentage of time in moderate-intensity physical activity; VPA: percentage of time in vigorous-intensity
580 physical activity.

581

582

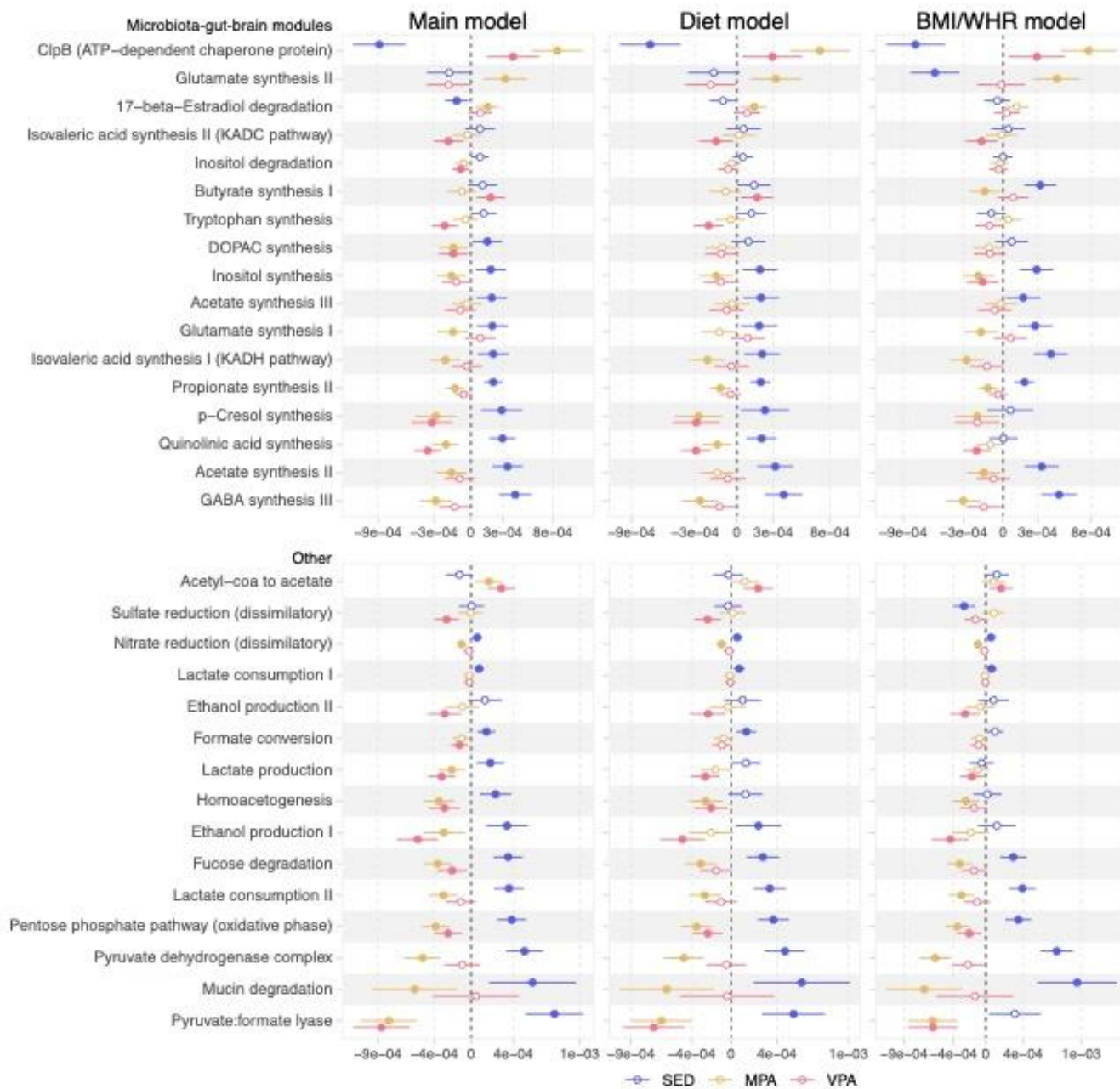
583 **Figure 2**



584

585 **Figure 2.** Associations of SED, MPA and VPA with functional modules of carbohydrate, amino acid, and
586 lipid degradation. Effect estimates show changes in the log(relative abundance+1) of modules by standard-
587 deviation change in SED, MPA, or VPA. Main model: adjustment for age, sex, alcohol intake, smoking,
588 education, country of birth, study site, month of accelerometer wear, total accelerometer wear time,
589 percentage of wear time on weekend, and fecal DNA extraction plate. Diet model: main model with
590 additional adjustment for total energy intake, and percentage of energy intake from carbohydrates, protein,
591 fibers, and added sugars. BMI/WHR model: main model with additional adjustment for BMI and waist-
592 hip ratio. Circles are the regression coefficients and bars represent the 95% confidence intervals. Filled
593 circles are associations with q-values <0.05. SED: percentage of time in sedentary behaviour; MPA:
594 percentage of time in moderate-intensity physical activity; VPA: percentage of time in vigorous-intensity
595 physical activity.
596

597 **Figure 3**



598

599 **Figure 3.** Associations of SED, MPA and VPA with microbiota-gut-brain modules and other functional
600 modules. Effect estimates show changes in the log(relative abundance+1) of modules by standard-
601 deviation change in SED, MPA, or VPA. Main model: adjustment for age, sex, alcohol intake, smoking,
602 education, country of birth, study site, month of accelerometer wear, total accelerometer wear time,
603 percentage of wear time on weekend, and fecal DNA extraction plate. Diet model: main model with
604 additional adjustment for total energy intake, and percentage of energy intake from carbohydrates,
605 protein, fibers, and added sugars. BMI/WHR model: main model with additional adjustment for BMI and waist-
606 hip ratio. Circles are the regression coefficients and bars represent the 95% confidence intervals. Filled

607 circles are associations with q-values <0.05 . SED: percentage of time in sedentary behaviour; MPA:
608 percentage of time in moderate-intensity physical activity; VPA: percentage of time in vigorous-intensity
609 physical activity.