

1 Geographical distribution of scrub typhus and risk of *Orientia*  
2 *tsutsugamushi* infection in Indonesia: Evidence mapping

3

4 Saraswati K<sup>1,2,3\*</sup>, Elliott I<sup>3</sup>, Day NPJ<sup>2,3</sup>, Baird JK<sup>1,3</sup>, Blacksell SD<sup>2,3</sup>, Ristiyanto<sup>4</sup>, Moyes CL<sup>5</sup>

5

6 <sup>1</sup>Oxford University Clinical Research Unit Indonesia, Faculty of Medicine, Universitas  
7 Indonesia, Jakarta, Indonesia

8 <sup>2</sup>Mahidol Oxford Tropical Medicine Research Unit, Faculty of Tropical Medicine, Mahidol  
9 University, Bangkok, Thailand

10 <sup>3</sup>Centre for Tropical Medicine and Global Health, Nuffield Department of Medicine,  
11 University of Oxford, UK

12 <sup>4</sup>Research Center for Public Health and Nutrition, Research Organization for Health,  
13 National Research and Innovation Agency, Salatiga, Indonesia

14 <sup>5</sup>Big Data Institute, Li Ka Shing Centre for Health Information and Discovery, University  
15 of Oxford, Oxford OX3 7LF, UK

16

17 \*Corresponding author

18 Email: [kartika.saraswati@ndm.ox.ac.uk](mailto:kartika.saraswati@ndm.ox.ac.uk)

19

20 **Abstract**

21 **Background**

22 Scrub typhus is a potentially fatal acute febrile illness caused by bacteria in the genus  
23 *Orientia*. Though cases have been documented, a comprehensive body of evidence has  
24 not previously been compiled to give an overview of scrub typhus in Indonesia. This  
25 study aimed to address this key knowledge gap by mapping and ranking geographic  
26 areas based on existing data on the presence or absence of the pathogen in humans,  
27 vectors, and host animals.

28

29 **Methodology/Principal Findings**

30 We performed searches on local and international electronic databases, websites,  
31 libraries, and collections including Embase, Medline, and Scopus to gather relevant

NOTE: This preprint reports new research that has not been certified by peer review and should not be used to guide clinical practice.

32 evidence (including grey literature). After extracting data on the presence and absence  
33 of the pathogen and its vectors, we ranked the evidence based on the certainty for the  
34 presence of human infection risk. The country was divided into subnational units, and  
35 each were assigned a score based on the evidence available for that unit. We presented  
36 this in an evidence map. *Orientia tsutsugamushi* presence has been identified on all the  
37 main islands (Sumatra, Java, Borneo, Celebes, Papua). About two thirds of the data  
38 points were collected before 1946. South Sumatra and Biak had the strongest evidence  
39 for sustaining infectious vectors. There was only one laboratory confirmed case in a  
40 human identified but 2,780 probable cases were documented. The most common vector  
41 was *Leptotrombidium deliense*.

42

### 43 **Conclusions/Significance**

44 Our review highlights the concerning lack of data on scrub typhus in Indonesia, the  
45 fourth most populous country in the world. The presence of seropositive samples,  
46 infected vectors and rodents confirm *O. tsutsugamushi* is widespread in Indonesia and  
47 likely to be causing significant morbidity and mortality. There is an urgent need to  
48 increase surveillance to better understand the burden of the disease across the  
49 archipelago and to inform national empirical fever treatment guidelines.

50

### 51 **Author summary**

52 Scrub typhus is a febrile illness common in the Asia Pacific area. It is caused by bacteria  
53 in the genus *Orientia* and spread via the bite of Trombiculid mites. While we know that  
54 scrub typhus is present in Indonesia, there is very limited information on how  
55 widespread the problem is. To address this problem, this study aimed to create a map  
56 of geographic areas that are at risk of scrub typhus by analysing existing data on human,  
57 mites, and other animals. By doing so, we hope to provide a better understanding of the  
58 extent and distribution of scrub typhus in Indonesia. Evidence of *Orientia*  
59 *tsutsugamushi*, has been reported from all the five main islands of Indonesia. South  
60 Sumatra and Biak had the strongest evidence. However, there was no evidence of  
61 presence or absence in about two thirds of the regions and most of the data points were  
62 collected before 1946. While the available data suggest that scrub typhus is prevalent in  
63 Indonesia, up-to-date information is lacking. Therefore, it is crucial to increase scrub  
64 typhus surveillance to improve our understanding of its burden and distribution, and  
65 eventually inform treatment strategies.

66

## 67 Introduction

68 Scrub typhus is a mite-borne acute febrile illness caused by bacteria in the genus  
69 *Orientia*. In South and Southeast Asia, scrub typhus is one of the leading causes of non-  
70 malarial fever [1]. Based on limited data, it is estimated that there are approximately  
71 one million cases annually and one billion people at risk [2].

72 Despite its prevalence, scrub typhus is under-recognised and understudied. The  
73 difficulty differentiating scrub typhus from other endemic febrile illnesses with similar  
74 clinical presentation, along with poor diagnostics, largely explains our limited knowledge  
75 of the burden and distribution of this disease. This uncertainty occurs even within the  
76 classical distribution of scrub typhus in Asia and the western Pacific.

77 There are more than 17,000 islands in Indonesia, straddled over five thousand  
78 kilometres of equator [3]. With 270 million residents, Indonesia is the fourth most  
79 populous country in the world [4]. Documentation of scrub typhus outbreaks in  
80 Indonesia exists, most notably among plantation workers in east Sumatra in the early  
81 1900s and among Allied Forces in the western Pacific during World War II [5]. Although  
82 sparse and dated, evidence suggests that scrub typhus may be broadly prevalent in  
83 Indonesia and, as it invariably does elsewhere, causes significant morbidity and  
84 mortality. However, in the absence of a reliable overview, the burden and distribution  
85 of disease caused by scrub typhus in Indonesia remains almost wholly unknown. This  
86 paucity of information drives a vicious cycle of underrecognition, inattention, and  
87 underfunding of research that may conceal a problem of potentially great clinical and  
88 public health importance.

89           The objective of this work is to address these issues by categorising specific  
90   geographical regions based on evidence of their ability to harbour infectious vectors of  
91   scrub typhus or their potential to do so. This yields an evidence-based map that depicts  
92   the known geographical distribution of infection risk, which will in turn inform the  
93   development of national surveillance, diagnostic, and treatment strategies. We go on to  
94   identify specific evidence gaps for either the presence or absence of the pathogen and  
95   its vectors in Indonesia.

## 96   Methods

### 97   Search strategy

98   Thirteen international electronic databases, including Embase, Global Health, Medline,  
99   Scopus, and Index Medicus for South-East Asia Region (IMSEAR), three Indonesian  
100   electronic databases, four local university/research centre websites, five Dutch journal  
101   and museum websites, and literature held at the Eijkman Institute library were searched  
102   (Supporting Information 1).

103           Searches were undertaken in English and Dutch. No Indonesian language search  
104   terms were used because there is no Indonesian word for scrub typhus and pilot  
105   searches showed that Indonesian articles can be captured using Latin, English, and Dutch  
106   terms. No language or publication date restrictions were applied. The search terms were  
107   combinations of terms relating to the bacterium (*Orientia tsutsugamushi*), scrub typhus  
108   disease, e.g. mite typhus; the mite vector, e.g. *Leptotrombidium*; and alternative names  
109   for Indonesia, e.g. Dutch East Indies. The detailed search strategy is provided in

110 (Supporting information 1). If available, we searched the reference list of relevant and  
111 review articles.

112 In addition, we included data from the collection of mite vector samples in the  
113 Balai Besar Litbang Vektor dan Reservoir Penyakit (B2P2VRP) – the Institute for Vector  
114 and Reservoir Control Research and Development, National Institute of Health Research  
115 Development (NIHRD), Ministry of Health (Supporting information 2). These mites were  
116 collected as ectoparasites from small mammal trapping. Finally, the results from a  
117 serosurvey we performed on human samples from Bali and Sumatra were also included  
118 [6].

#### 119 Eligibility criteria

120 Evidence of *O. tsutsugamushi* detection or antibodies against *O. tsutsugamushi* in  
121 humans, animals or vectors, and the presence or absence of vectors, was eligible for  
122 inclusion. Data of interest included the location of infection and details of the methods  
123 used to detect *O. tsutsugamushi* or antibodies against it. A sample size of at least 400  
124 was required to support absence of scrub typhus. If a survey found no positive samples  
125 and its sample size was 400, using binomial distribution confidence interval calculation,  
126 the upper limit of 95% confidence interval would be 0.009, yielding 95% certainty that  
127 the true proportion of positives in the population is less than 1%.

#### 128 Data extraction

129 Data were extracted into a Microsoft Excel spreadsheet (Supporting Information 2).  
130 Each data point contained evidence for the presence or absence of *O. tsutsugamushi*  
131 and/or its vector at a specific location during a specified year. The location used as the

132 data point was the presumed infection location i.e. where the patient was located for  
133 two weeks (14 days) preceding the onset of clinical signs and symptoms. When available,  
134 the number of human cases found in each data point were also collected.

135 In case reports or case series, the admission or first presenting date was counted  
136 as the study start date. The last day of observation or the date of discharge were entered  
137 as study end date. Where data were aggregated by location or time and could not be  
138 disaggregated, the aggregate data was entered and recorded accordingly. If the data  
139 could be disaggregated, it was separated into the smallest location or time unit possible.  
140 In the case of reinfection, each infection episode was inputted as a data point. Where  
141 the study month and year were unknown, the publication month and year were inputted  
142 instead.

#### 143 [Data geolocation](#)

144 The latitude and longitude of each data point were recorded in decimal format. Each  
145 data point was classed as a point or polygon. A point is defined as a site that can be  
146 geopositioned to an accuracy of  $\leq 25\text{km}^2$  (i.e. 5km x 5km) or has  $\leq 25\text{km}^2$  area size [7]. A  
147 polygon is a site that cannot be geopositioned to an accuracy of  $\leq 25\text{km}^2$  or has  $> 25\text{km}^2$   
148 area size [7]. The coordinates of the approximate centre of the polygon were used. If  
149 the survey site coordinate information was not given or could not be located using an  
150 online gazetteer, the administrative division (e.g. subdistrict or district) was entered as  
151 the site location. The extracted data was mapped by geographic coordinates to each  
152 subnational unit.

## 153 Data analysis

154 These data were synthesised using descriptive statistics, graphs, maps, and narrative  
155 synthesis. Proportions and frequencies were used to summarise and describe  
156 categorical variables. The analysis was done on Microsoft Excel 2013, StataBE 17  
157 (StataCorp, College Station, Tx), R version 3.6.2 and R Studio Version 1.2.5033 [8, 9].

## 158 Defining the area of study

159 In the mapping process, Indonesia was divided into subnational units. Indonesia is an  
160 archipelago of thousands of islands so we used a mixed approach to define subnational  
161 units where both administrative boundaries, the size of the islands, and their distance  
162 from each other were considered [7]. The largest islands in Indonesia, e.g. Java, were  
163 divided based on the level one administrative (provincial) boundary [7]. Islands larger  
164 than 200 km<sup>2</sup> and further than 25 km from the largest islands were considered as  
165 separate units [7]. If the islands were within 10 km of each other, they were categorised  
166 into the same subnational unit [7]. When smaller islands (less than 100 km<sup>2</sup>) were 'more  
167 than 10 km from any other islands', they were dismissed [7]. If there were any data  
168 points located in these smaller islands, the data points were pulled to the nearest  
169 subnational unit; consequently, the data were not lost. This resulted in 77 subnational  
170 units, including the whole of Timor Island, the eastern half of which is not Indonesian  
171 territory but the nation of Timor-Leste.

## 172 Assigning an evidence score to each subnational unit

173 A score was assigned to each subnational unit based on the likelihood of the region  
174 sustaining infectious vectors. The scores reflected the evidence weighted for level of  
175 certainty for the presence of human infection risk by *O. tsutsugamushi*.

176 The evidence was ranked in descending score order as follows: confirmed human  
177 case (score +24), probable human case (score +22), possible human case diagnosed by  
178 Weil-Felix test (score +19), possible human case diagnosed clinically without eschar  
179 (score +18), seroprevalence of >20% in community (score +16), seroprevalence of >10%  
180 and ≤20% in the community (score +15), seroprevalence of >5% and ≤10% in the  
181 community (score +14), seroprevalence of 5% or less (but >0) in the community (score  
182 +13), confirmed infection in vector (e.g. *Leptotrombidium* spp.) (score +10), confirmed  
183 infection in non-human hosts (e.g. rodents) coupled with presence of the vector (score  
184 +8), infection in non-human hosts but the presence of the vector unknown (score +6),  
185 presence of the vector but the presence of the pathogen unknown (score +3). In  
186 addition, each data point was given a score based on the year when sample collection  
187 or observation ended (Section A, Supporting Information 3). Higher scores were given  
188 to newer studies to account for possible ecological changes over time.

189 Confirmed cases were defined as those diagnosed with at least one laboratory  
190 method from: bacterial culture and isolation, sequencing, indirect immunofluorescence  
191 test (IFA), indirect immunoperoxidase test (IIP), polymerase chain reaction (PCR),  
192 enzyme-linked immunosorbent assay (ELISA), or immunochromatography test (ICT).  
193 Probable cases were defined as those diagnosed when eschar was found during physical



194 examination. An eschar is a small painless necrotic skin lesion at the site of *O.*  
195 *tsutsugamushi* inoculation by a mite and it is a highly specific sign of scrub typhus [2,  
196 10]. Possible cases defined as those with: first, cases with positive OX-K antigen Weil-  
197 Felix reaction; second, cases diagnosed clinically based on clinicians' suspicion (with no  
198 eschar found). The Weil-Felix test for scrub typhus is based on the cross-reaction of the  
199 *Proteus mirabilis* Kingsbury OX-K antigen with antibodies against *O. tsutsugamushi* [11].  
200 This test suffers from low sensitivity and specificity but is still being utilised in some  
201 resource-limited settings [11].

202 *Leptotrombidium* species considered confirmed vectors [12] in this study are:  
203 *Leptotrombidium akamushi*, *Leptotrombidium arenicola*, *Leptotrombidium*  
204 *chiangraiensis*, *Leptotrombidium deliense*, *Leptotrombidium fletcheri*, *Leptotrombidium*  
205 *gaohuensis*, *Leptotrombidium imphalum*, *Leptotrombidium pallidum*, *Leptotrombidium*  
206 *pavlovskyi*, and *Leptotrombidium scutellare* [13].

207 We geographically mapped the data points and assessed the evidence obtained  
208 for each subnational unit. Where there was more than one data point in one subnational  
209 unit, the evidence ranked with a higher score was used and the lower score was  
210 disregarded. We scored each subnational unit using the decision tree shown in (Fig A,  
211 Supporting Information 3). The scores for the level of evidence and sample collection  
212 year were combined to calculate the final scores. Then a map was generated with each  
213 subnational unit coloured according to its score.

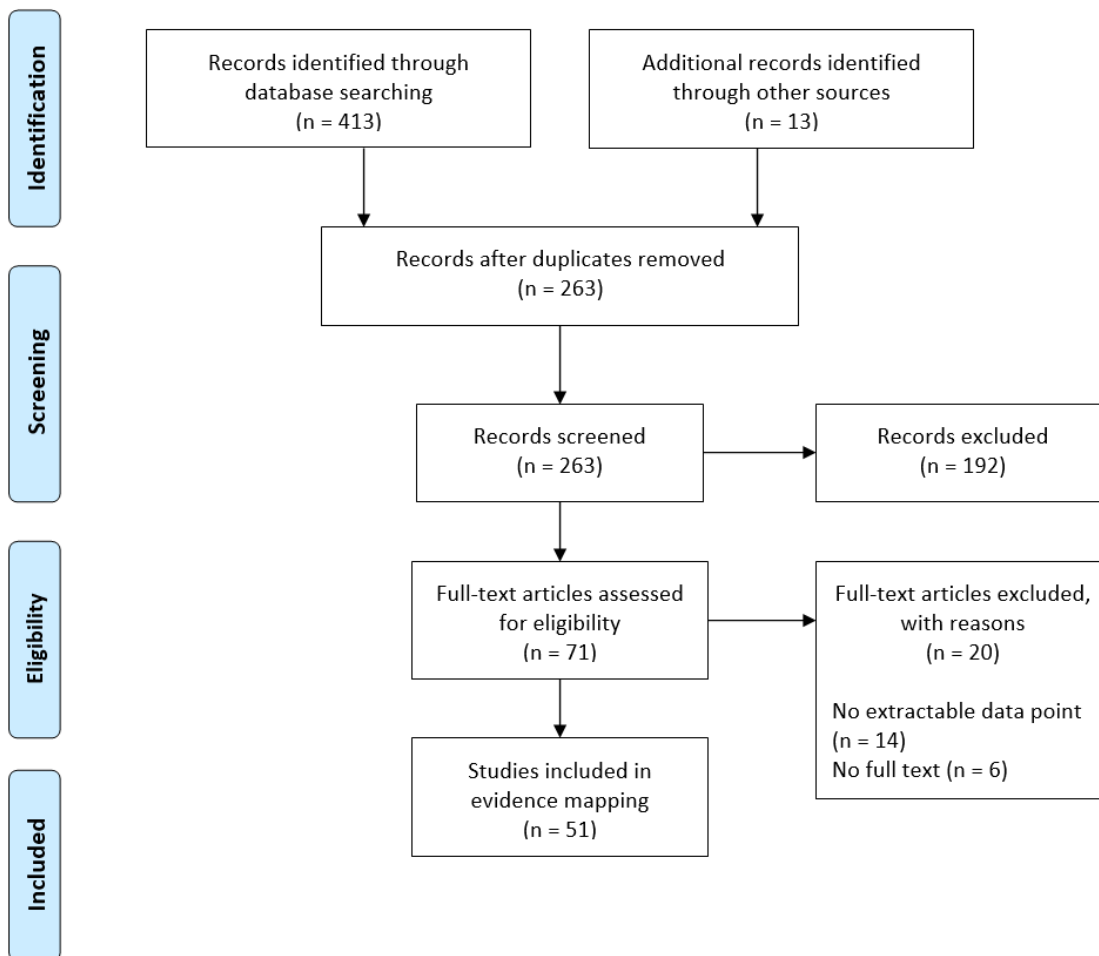
## 214 Reporting

215 Although this study is not a systematic review per se, there are similarities in the  
216 methodologies and reporting standards. Therefore, the reporting of this evidence  
217 mapping followed PRISMA guidelines when applicable [14].

## 218 Results

### 219 Search results

220 The initial searches were performed on 7 November 2018, with an update search on 15  
221 June 2021. We included 51 studies for the evidence mapping (Fig 1 and Supporting  
222 Information 2) [15-65]. We also included the results from a serosurvey we performed  
223 on archived fever study samples and data from the B2P2VRP [6].



224

225 Fig 1. The PRISMA flowchart describing the number of articles identified in the searches,  
226 screened, assessed for eligibility, and included in the evidence mapping

227

## 228 Study year

229 The study years range from 1908 to 2018. Most data points (n=223, 63.0%) were  
230 collected before 1946. All probable and possible human cases data points were derived  
231 from studies done prior to 1955 (Fig 2, Fig B Supporting Information 3).

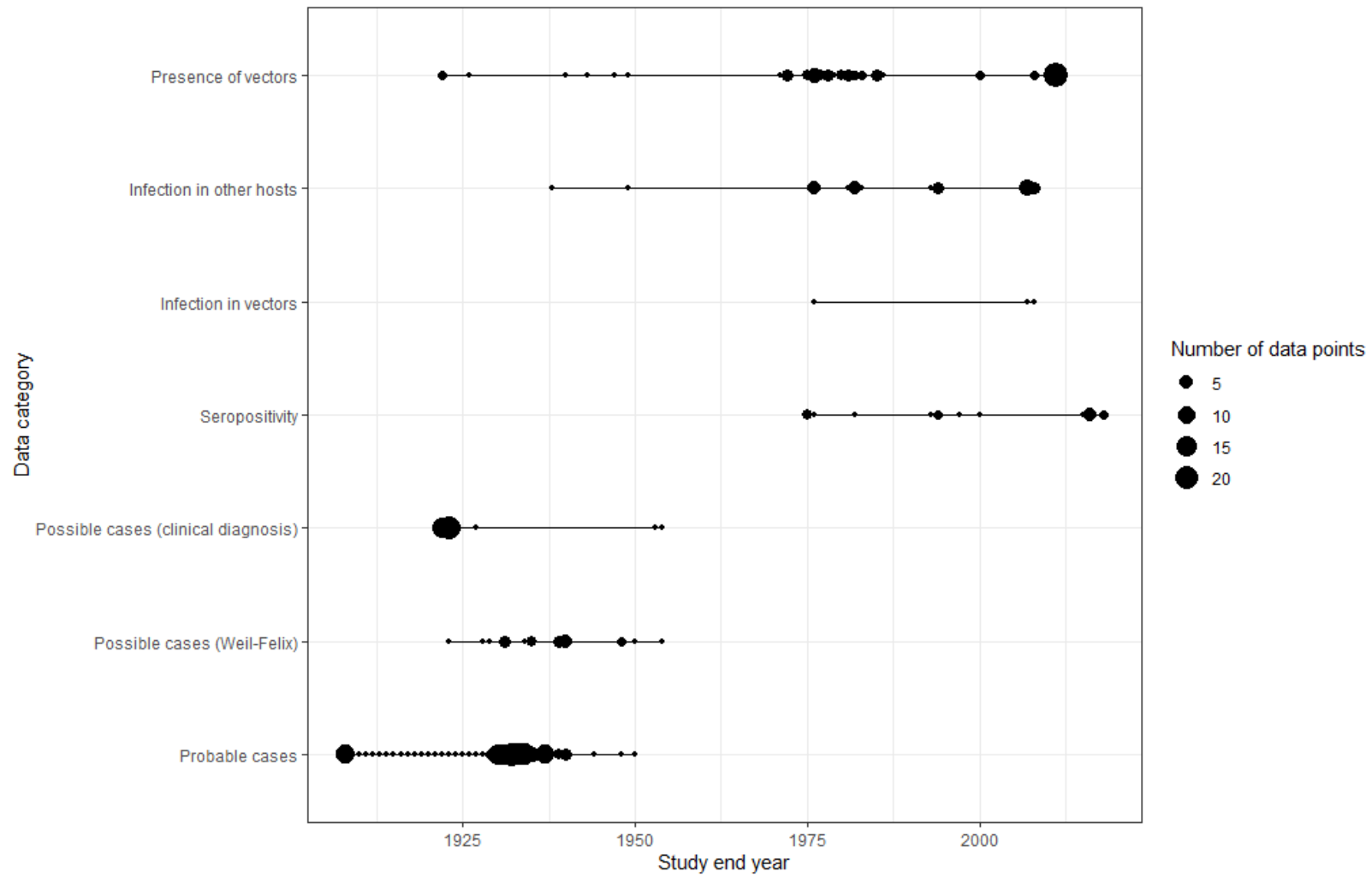


Fig 2. The number of data points in each category over 110 years

## 232 Distribution of data points

233 There were 354 data points extracted (Supporting Information 2). These data points  
234 were distributed across 25 out of 77 (32%) subnational units, with most data points in  
235 North Sumatra (n = 149, 42.1%), followed by Aceh (n = 64, 18.1%) and Jakarta with 23  
236 data points (6.5%) (Table 1). The median of total data points in each subnational unit  
237 was 4 (range 1–169). The three largest data point clusters were of 148 (41.8%), 50  
238 (14.1%), 25 (7.1%) data points (Fig C, Supporting Information 3), which were in North  
239 Sumatra, Aceh, and Jakarta, respectively.

Table 1. The number of data points in each subnational unit

Subnational unit	Probable case	Possible case (Weil-Felix)	Possible case (clinical diagnosis)	Sero-prevalence	Infection in vector	Infection in other hosts	Presence of vector	Number of data points
North Sumatra	103	3	39	0	0	0	4	149
Aceh	50	13	0	0	0	0	1	64
Jakarta	2	3	0	2	1	5	10	23
East Java	0	0	0	4	0	4	9	17
Lampung	0	0	0	4	0	6	6	16
Biak	0	1	1	0	0	3	5	10
West Java	0	0	0	1	0	0	9	10
Central Java	0	0	0	1	0	0	9	10
North Sulawesi	0	0	0	0	1	4	3	8
East Borneo	0	0	0	0	1	4	1	6
Papua	0	0	0	1	0	1	3	5
West Borneo	2	2	0	0	0	0	0	4
Bengkulu	0	1	0	0	0	0	3	4
Jambi	0	0	0	1	0	0	3	4
Central Sulawesi	0	0	0	0	0	2	2	4
West Sumatra	0	0	0	0	0	4	0	4
West Papua	1	0	1	0	0	0	1	3
South Sumatra	1	1	0	0	0	0	1	3
Banten	0	1	0	0	0	0	1	2
Bali	0	0	0	2	0	0	0	2

Subnational unit	Probable case	Possible case (Weil-Felix)	Possible case (clinical diagnosis)	Sero-prevalence	Infection in vector	Infection in other hosts	Presence of vector	Number of data points
South Borneo	0	0	0	0	0	0	2	2
Yogyakarta	0	0	0	1	0	0	0	1
South Sulawesi	0	0	0	1	0	0	0	1
Waigeo+*	0	0	0	1	0	0	0	1
Bintan+*	0	0	0	0	0	0	1	1
Total data points	159	25	41	19	3	33	74	354

\* The notation "Waigeo+" refers to the island of Waigeo and the smaller islands surrounding it, while "Bintan+" denotes the island of Bintan and its neighbouring islets.

## 240 Confirmed cases

241 A 1997 article reported an acute scrub typhus case confirmed by more than four-fold  
242 rise in ELISA IgG titre between acute and convalescent samples [66]. This patient also  
243 developed an eschar-like skin lesion. He lived in Jakarta, but travelled to the Banda  
244 Islands, Maluku within the disease incubation window [66]. Therefore, the infection site  
245 could not be pinpointed and mapped.

## 246 Probable cases

247 North Sumatra had the highest number of probable case data points (n=103, 29.1%)  
248 (Table 1). There were 2,780 probable cases counted. North Sumatra had the highest  
249 number of probable case counts (n=1,651, 59.4%). Followed by West Papua with 931  
250 probable cases (33.5%) and 34 deaths from one data point [33]. It is important to note  
251 that this number reflects the amount of testing undertaken as well as the disease  
252 incidence over a number of years and does not give an indication of infection  
253 prevalence.

## 254 Possible cases

255 There were 25 data points and 158 cases diagnosed with the Weil-Felix test. Aceh had  
256 the highest number of data points (n=13/25, 52.0%) and possible cases diagnosed with  
257 the Weil-Felix test (n=77/158, 48.7%). North Sumatra had the highest number of data  
258 points (n=39/41, 95.1%) and possible cases diagnosed clinically (n = 119/147, 80.9%).



## 259 Seropositivity

260 There were 11 subnational units with seroprevalence data. Lampung and East Java had  
261 the most data points (n=4/19, 21.1%). The median seroprevalence was 6% (ranging from  
262 0.36% in Jakarta to 20% in Lampung) (Table A, Supporting Information 3). There were  
263 3,192 people tested, with 205 found to be seropositive. The most used diagnostic  
264 methods were ELISA (n=14/19, 73.7%), followed by IFA (n=5/19, 26.3%) (Supporting  
265 Information 2).

266 There were three data points documenting absence, however, these data points  
267 did not fulfil our minimum sample size criteria i.e. 400. Studies in East Java and Bali both  
268 used ELISA to test 168 and 48 participants, respectively, while a study in Central Sulawesi  
269 used IFA to test 91 participants [50, 57, 65].

## 270 Infection in vectors

271 There was one data point (n=1/3, 33.3%) each in Jakarta, North Sulawesi, and East  
272 Borneo. One data point recorded infection in *L. arenicola* found in Jakarta, diagnosed by  
273 animal passage and isolation [43]. Two other data points from North Sulawesi and East  
274 Borneo described infection in *Leptotrombidium* spp. confirmed with rtPCR (Supporting  
275 Information 2) [64].

## 276 Infection in other non-human hosts

277 There were 33 data points for infection in other hosts. Lampung had the highest number  
278 of data points (n=6/33, 18.2%), followed by Jakarta with five data points (15.2%). All  
279 documented infected hosts were rodents (Table B, Supporting Information 3), and

280 *Rattus tanezumi* was the most commonly found positive (n=7/33, 23.3%). Most of the  
281 data points used ELISA as the diagnostic method (n=17/33, 52%), followed by IFA (n=11,  
282 33%), isolation (n=7, 21%), and Weil-Felix test (n=1, 3%).

### 283 Presence of the vector

284 There were 74 data points reporting the presence of one or more of the confirmed  
285 vector species. Jakarta had the most data points (n=10/74, 13.5%). These data points  
286 spanned 1922 to 2011.

287 The most commonly found vector species was *L. deliense* (74.3%, n=55/74)  
288 followed by *L. fletcheri* (13.5%, n=10/74) (Table 2). In three data points, only the genus  
289 was identified (recorded as *Trombiculae*). These genus-only data points were not  
290 included in the main analysis since we could not be sure if they were confirmed vectors  
291 of scrub typhus.

292 Table 2. The number of data points for each vector species

Host	Number of data point(s)	Percentage
<i>Leptotrombidium deliense</i>	55	74.3
<i>Leptotrombidium fletcheri</i>	10	13.5
<i>Leptotrombidium scutellare</i>	4	5.4
<i>Leptotrombidium arenicola</i>	2	2.7
<i>Leptotrombidium akamushi</i>	2	2.7
<i>Leptotrombidium imphalum</i>	1	1.4

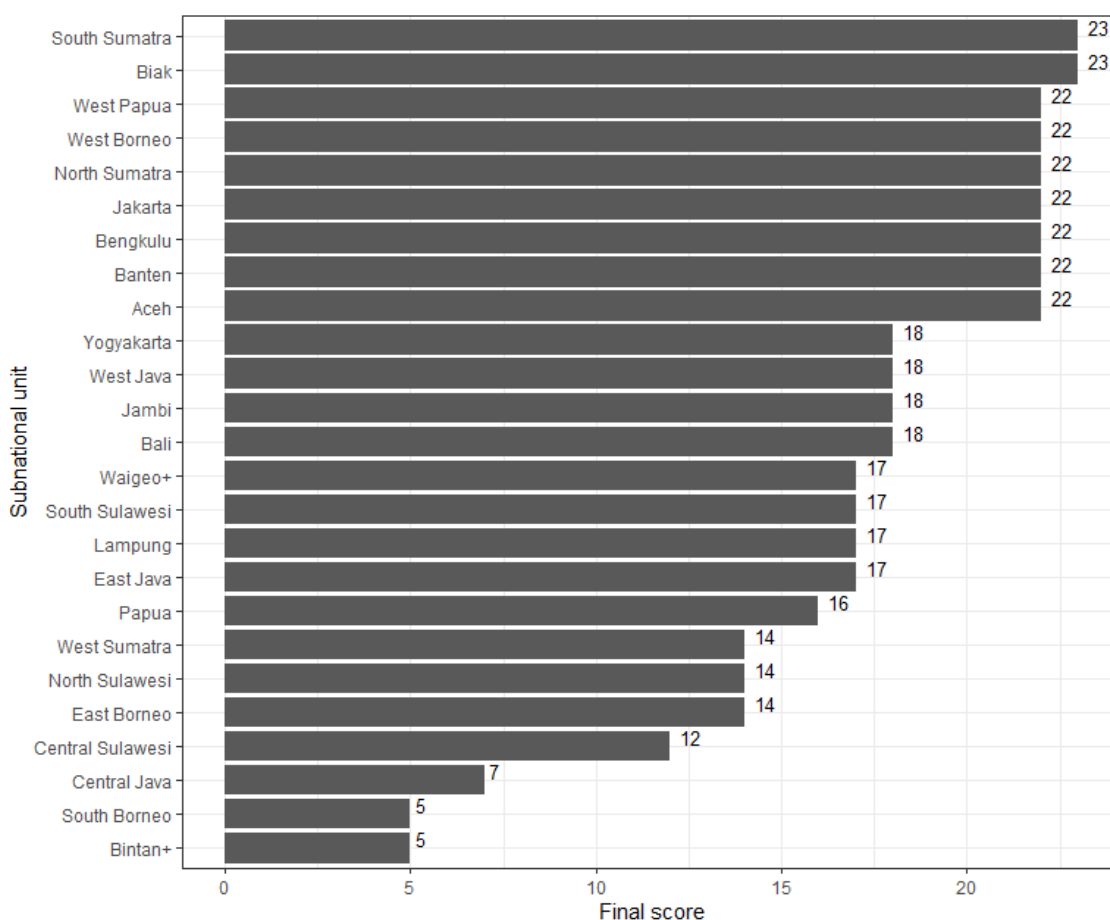
293

294

295 Scores

296 South Sumatra and Biak had the highest score for evidence for the presence of scrub  
297 typhus disease in humans with 23 points. Among subnational units with evidence, South  
298 Borneo and Bintan+ had the lowest scores with 5 points – indicating a lack of evidence  
299 (Fig 3). The median of positive scores was 18 (range 5-23). These scores were shown in  
300 the final evidence map (Fig 4). Table D, Supporting Information 3 shows the comparison  
301 between number of data points and the scores for each subnational unit.

302



303

304 Fig 3. The distribution of scores across subnational units

305

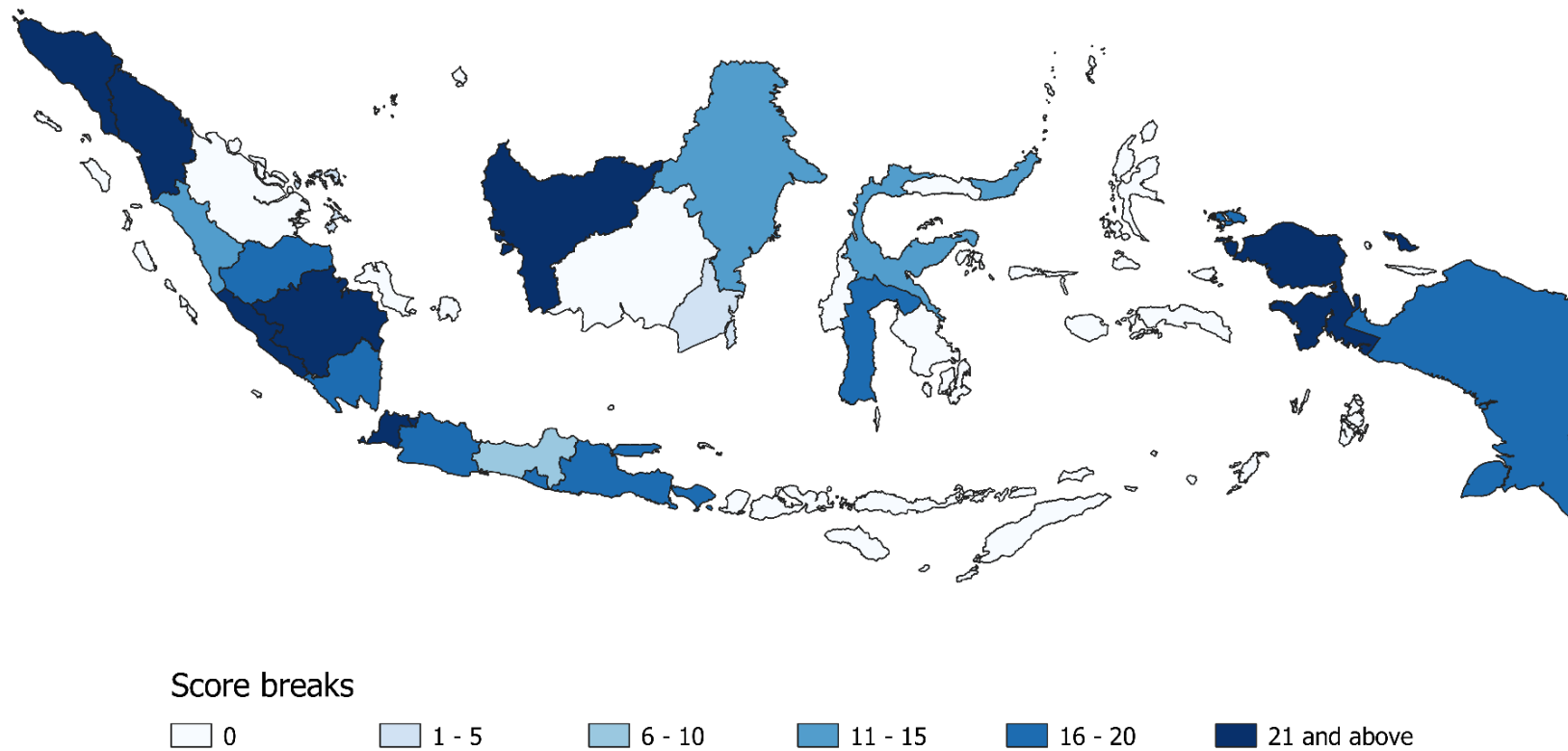


Fig 4. Map of evidence scores for scrub typhus / *O. tsutsugamushi* in subnational units of Indonesia

The darker the colour the stronger the evidence for presence of scrub typhus disease in humans. Low scores indicate a lack of evidence (rather than confirmed absence of this disease). Considering the range and distribution of the scores, 'pretty breaks' i.e. classification using round numbers as class limits, with interval of five (defined interval) were selected for visualisation [67, 68].

## 306 Discussion

307 To the best of our knowledge, this is the first attempt to systematically map the evidence  
308 for the risk of scrub typhus transmission in Indonesia. Despite a lack of gold standard testing  
309 for scrub typhus in humans, we found strong evidence for the presence of *O. tsutsugamushi*  
310 infections across the Indonesian archipelago from Aceh, Sumatra in the West to Papua in  
311 the East and on all the largest islands. Within the archipelago however, we found a lack of  
312 evidence for either presence or absence of scrub typhus in two thirds of the subnational  
313 units. Further, there was a lack of large-scale epidemiological surveys that would allow areas  
314 of disease absence to be identified or infection prevalence to be estimated. South Sumatra  
315 and Biak had the best evidence available for sustaining infective vectors, but vector and  
316 pathogen surveys have not been conducted or published in many areas. This is particularly  
317 important because the widespread nature of the evidence that we did identify indicates  
318 that a risk of infection could be present in many more areas of Indonesia. Only one  
319 confirmed acute case of scrub typhus using gold standard diagnostics was documented,  
320 showing that current data on human disease is lacking [66]. However, we could not include  
321 this as a data point since the site of infection was unknown. We documented 2,780 probable  
322 human scrub typhus cases. Seropositivity data were only available in 11 out of 76 (14%)  
323 subnational units. *L. deliense* was the most common vector. We have also identified *O.*  
324 *tsutsugamushi* infection in *Leptotrombidium* sp. All non-human infected hosts were  
325 rodents. Almost two thirds of data points were collected before 1946.

326 Because the search was performed in English and Dutch only, there could be data in other  
327 languages not captured. However, this is unlikely, as publications usually mention "*Orientia*  
328 *tsutsugamushi*" or the term 'tsutsugamushi' in Latin script in the text and therefore can be  
329 captured by these search terms. To minimise the possibility of missing any relevant articles,  
330 in addition to searching in 13 international databases, we also searched the websites of  
331 three Indonesian databases, Indonesia Ministry of Health networks, three Dutch journals  
332 and three Dutch museums.

333 One limitation was that this study was conducted at the level of subnational regions  
334 spanning relatively large areas and a range of environments including urban and rural. The  
335 scores of each subnational unit are not necessarily reflective of the evidence available in  
336 each area within the region. This is important to keep in mind when interpreting the results,  
337 given that the distribution of scrub typhus is often described as patchy in the form of 'mite  
338 islands' [69].

339 The scores assigned to each subnational area reflect the strength of evidence for the  
340 presence of an infection risk. The scores, however, do not reflect the volume of data  
341 collected nor do they provide a value for the likelihood of infection. For areas with no  
342 evidence of presence or absence, the likelihood of sustaining infectious reservoirs is  
343 unknown. The lack of evidence for an absence of cases or infectious vectors highlights  
344 where surveys are most needed.

345           Almost two thirds of the data points were collected before 1946 and may no longer  
346 be representative of the current situation due to changes in land use and ecosystems [70,  
347 71]. In addition, some of the diagnostic methods used then are not the current standard.  
348 This was mitigated in the scoring process of each subnational unit by weighting based on  
349 year of data collection, and recent evidence preferentially over older data.

350           This evidence mapping underlines the absence of evidence in about two thirds of  
351 subnational units in Indonesia. The lack of data points on confirmed human cases could be  
352 due to the limited availability of accurate and accessible diagnostic modalities and the low  
353 awareness of medical practitioners. Scrub typhus and other rickettsial diseases are not  
354 mentioned in the Indonesian list of medical graduates' competencies [72]. There is an  
355 urgent need to raise awareness and include rickettsial diseases in the empiric treatment  
356 guidelines for acute fever [73]. Establishing scrub typhus and other rickettsial diseases as  
357 neglected tropical diseases recognised by the World Health Organization could increase  
358 awareness of these diseases and potentially open more research funding opportunities [74].

359           North Sumatra has the highest number of data points and evidence for sustaining  
360 infected vectors, however, the data points on human cases were more than 50 years old.  
361 Although the presence of infected vectors has been confirmed with rtPCR in East Borneo  
362 and North Sulawesi, we have not found any reported human scrub typhus infection or any  
363 study attempting to look for it. Regions adjoining areas with evidence of *O. tsutsugamushi*  
364 presence e.g. Riau in east Sumatra and Central Borneo, could potentially bear an

365 unidentified scrub typhus burden. These areas should be targeted in future studies to  
366 investigate if scrub typhus is an important current public health concern.

367         It is possible that the incidence of scrub typhus in Indonesia is low or absent in  
368 certain areas. However, given the widespread presence of infective vectors and seropositive  
369 participants, and the presence of scrub typhus infection in nations sharing land borders with  
370 Indonesia e.g. Papua New Guinea and Malaysia [75, 76], and the current lack of survey  
371 activities and public health data, this seems unlikely. In addition to cases resembling  
372 tsutsugamushi disease reported since the 1930s, scrub typhus antibody has also been  
373 detected in Papua New Guineans [75, 77]. In Sabah (Malaysian Borneo), scrub typhus has  
374 been identified as an important but “unrecognized” cause of acute febrile illness [76].

375         To better understand the patchiness of infection risk within an area, species  
376 distribution models incorporating ecological parameters to predict presence in areas  
377 without data points would help fill the knowledge gaps [78]. This could also be helpful in  
378 selecting areas to do further research and direct what kind of research would be most  
379 useful. Acute febrile illness studies determining the prevalence of acute cases and  
380 serosurveys determining infection prevalence should be prioritised. Serosurveys and the  
381 inclusion of scrub typhus in the diagnostic panels for acute febrile illness studies would help  
382 lay the groundwork to better our understanding.

383         The available data supports a reasonable conclusion that *O. tsutsugamushi*  
384 represents a widespread infection risk in Indonesia. In some locations, the presence of



385 vectors that can sustain infection is well documented. However, evidence mapping has also  
386 identified vast areas where data are lacking and highlights the urgent need to improve our  
387 understanding of scrub typhus across the Indonesian archipelago to inform empirical  
388 treatment guidelines for febrile patients and guide public health strategies.

389

## 390 [Supporting Information](#)

391 S1 Appendix. Search strategy

392 S2 Appendix. Full dataset

393 S3 Appendix. Additional results

394

## 395 [Funding](#)

396 This research was funded in whole, or in part, by the Wellcome Trust [220211]. For the  
397 purpose of Open Access, the author has applied a CC BY public copyright licence to any  
398 Author Accepted Manuscript version arising from this submission. The funders had no role  
399 in study design, data collection and analysis, decision to publish, or preparation of the  
400 manuscript.

401

## 402 Data availability statement

403 All relevant data supporting the findings of this study are available within the article and  
404 supporting information.

405

## 406 Competing interests

407 SDB serves as Section Editor in PLOS Neglected Tropical Diseases Editorial Board.

408

## 409 References

- 410 1. Shrestha P, Dahal P, Ogbonnaa-Njoku C, Das D, Stepniewska K, Thomas NV, et al.  
411 Non-malarial febrile illness: a systematic review of published aetiological studies and  
412 case reports from Southern Asia and South-eastern Asia, 1980-2015. *BMC Med.*  
413 2020;18(1):299. doi: 10.1186/s12916-020-01745-0.
- 414 2. Paris D, Day N. Tropical rickettsial infections. In: Farrar J, Hotez P, Junghanss T, Kang  
415 G, Lalloo D, White N, editors. *Manson's tropical diseases*. 23. Philadelphia: Elsevier  
416 Saunders; 2014. p. 273-91.
- 417 3. Federal Research Division Library of Congress. *Indonesia: A country study*. 6th ed.  
418 Frederick WH, Worden RL, editors. Washington, DC: Government Printing Office;  
419 2011.
- 420 4. Badan Pusat Statistik. Jumlah Penduduk Hasil SP menurut Wilayah dan Jenis  
421 Kelamin, Indonesia 2020. 2022 [Cited 2022 April 27] Available from:  
422 <https://sensus.bps.go.id/topik/tabular/sp2020/83/175748/0>.
- 423 5. Richards AL, Jiang J. Scrub typhus: Historic perspective and current status of the  
424 worldwide presence of *Orientia* species. *Trop Med Infect Dis.* 2020;5(2). doi:  
425 10.3390/tropicalmed5020049.
- 426 6. Saraswati K, Tanganuchitcharnchai A, Ongchaikupt S, Mukaka M, Day NPJ, Baird JK,  
427 et al. Serosurvey of scrub typhus in Indonesia: A cross-sectional analysis of archived

- 428 fever studies samples. SSRN [Preprint]. 2022 [Cited 2022 Aug 27]. Available from:  
429 doi: 10.2139/ssrn.4201407.
- 430 7. Moyes CL, Henry AJ, Golding N, Huang Z, Singh B, Baird JK, et al. Defining the  
431 geographical range of the *Plasmodium knowlesi* reservoir. PLoS Negl Trop Dis.  
432 2014;8(3):e2780. doi: 10.1371/journal.pntd.0002780.
- 433 8. R Core Team. R: A language and environment for statistical computing. R Foundation  
434 for Statistical Computing, Vienna, Austria; 2019.
- 435 9. RStudio Team. RStudio: Integrated development for R. RStudio, Inc., Boston, MA;  
436 2019.
- 437 10. Lim C, Paris DH, Blacksell SD, Laongnualpanich A, Kantipong P, Chierakul W, et al.  
438 How to determine the accuracy of an alternative diagnostic test when it is actually  
439 better than the reference tests: A re-evaluation of diagnostic tests for scrub typhus  
440 using Bayesian LCMs. PLoS One. 2015;10(5):e0114930. doi:  
441 10.1371/journal.pone.0114930.
- 442 11. Luce-Fedrow A, Mullins K, Kostik AP, St John HK, Jiang J, Richards AL. Strategies for  
443 detecting rickettsiae and diagnosing rickettsial diseases. Future Microbiol.  
444 2015;10(4):537-64. doi: 10.2217/fmb.14.141.
- 445 12. Traub R, Wisseman CL, Jr. The ecology of chigger-borne rickettsiosis (scrub typhus). J  
446 Med Entomol. 1974;11(3):237-303. doi: 10.1093/jmedent/11.3.237.
- 447 13. Santibáñez P, Palomar AM, Portillo A, Santibáñez S, Oteo JA. The role of chiggers as  
448 human pathogens [Internet]. In: An Overview of Tropical Diseases, INTECH,  
449 2015;p.174-201. <http://dx.doi.org/10.5772/61978>.
- 450 14. Moher D, Liberati A, Tetzlaff J, Altman DG. Preferred reporting items for systematic  
451 reviews and meta-analyses: the PRISMA statement. PLoS Med. 2009;6(7):e1000097.  
452 doi: 10.1371/journal.pmed.1000097.
- 453 15. Schüffner W. Pseudotyphoid fever in Deli, Sumatra (a variety of Japanese Kedani  
454 Fever). Philipp J Sci. 1915;10(5):345-53.
- 455 16. Walch E, Keukenschrijver NC. Eenige opmerkingen aangaande de Epidemiologie van  
456 de Pseudotyphus. Geneeskundig Tijdschrift voor Nederlandsche Indie.  
457 1924;64(2):247-76.
- 458 17. Van Driel BM. A remarkable case of "mite fever". Geneeskundig Tijdschrift voor  
459 Nederlandsche Indie. 1927;67(5):667-74.
- 460 18. Walch EW. Trombiculae and related mites from the Dutch East Indies. Geneeskundig  
461 Tijdschrift voor Nederlandsche Indie. 1927;67(6):922-32.
- 462 19. Wolff JW. Tropical typhus, a disease resembling typhus fever. Geneeskundig  
463 Tijdschrift voor Nederlandsche Indie. 1929;69:429-58.

- 464 20. Van Steenis PB. A case of pseudotypus (Schuffner) in Java. The differential  
465 diagnosis of exanthematic fever. *Nederlands Tijdschrift voor Geneeskunde*.  
466 1931;31(5):495-502.
- 467 21. Wolff JW. Observations in Tsutsugamushi fever and tropical typhus. *Geneeskundig*  
468 *Tijdschrift voor Nederlandsche Indie*. 1931;71(1):35-45.
- 469 22. Emanuels BJ. Research on tropical typhus and (or) mite fever in Atjeh. *Geneeskundig*  
470 *Tijdschrift voor Nederlandsche Indie*. 1932;72(4):196-205.
- 471 23. Bessem N. A case of mite fever in the Western Division of Borneo. *Geneeskundig*  
472 *Tijdschrift voor Nederlandsche Indie*. 1935;75(22):1909-10.
- 473 24. Dinger J, Lentjes L. Een geval van Mijtekoorts. Diagnose door middel der dierproef.  
474 *Geneeskundig Tijdschrift voor Nederlandsch-Indië*. 1935;75:1951-4.
- 475 25. Kuypers C. Een tweetal gevallen van Tropical Typhus. *Geneeskundig Tijdschrift voor*  
476 *Nederlandsch-Indië*. 1935;75(22):1896-903.
- 477 26. Van Waardenburg DA. Four cases of rickettsia infection in Benkoelen Residency.  
478 *Geneeskundig Tijdschrift voor Nederlandsche Indie*. 1936;76(12):712-21.
- 479 27. Wolff JW, Kouwenaar W. On Rickettsia diseases in Sumatra. *Geneeskundig*  
480 *Tijdschrift voor Nederlandsche Indie*. 1936;76(5):272-88.
- 481 28. Heinemann H. Reinfection with pseudotypus (mite fever). *Geneeskundig Tijdschrift*  
482 *voor Nederlandsche Indie*. 1938;78(48):3037-40.
- 483 29. Wolff J, De Graaf W. Twee nieuwe gevallen van mijtekoorts op Java. *Geneeskundig*  
484 *Tijdschrift voor Nederlandsche Indie* 1939;79(39):2434-41.
- 485 30. Wolff JW, De Graaf W. Two new cases of mite fever in Java. *Geneeskundig Tijdschrift*  
486 *voor Nederlandsche Indie*. 1939;79(41):2577-88.
- 487 31. Kotter GF. Rickettsiosis among troops in Atjeh. *Geneeskundig Tijdschrift voor*  
488 *Nederlandsche Indie*. 1940;80(2):66-79.
- 489 32. Van Der Schroeff JP. An epidemic of mite fever and tropical typhus in Atjeh and  
490 dependencies. *Geneeskundig Tijdschrift voor Nederlandsche Indie*.  
491 1941;81(20):1103-22.
- 492 33. Griffiths JT, Jr. A scrub typhus (tsutsugamushi) outbreak in Dutch New Guinea. *J*  
493 *Parasitol*. 1945;31(5):341-50.
- 494 34. Griffiths JT, Jr. A further account of Tsutsugamushi fever at Sansapor, Dutch New  
495 Guinea. *Journal of Parasitology*. 1947;33(4):367-73.
- 496 35. Gispén R, Smit AM, Westermann CD. Epidemic scrub typhus in Batavia. *Medisch*  
497 *Maandblad*. 1949;2(8):238-46.

- 498 36. Gispen R. The role of rats and mites in the transmission of epidemic scrub typhus in  
499 Batavia. *Documenta Neerlandica et Indonesica de Morbis Tropicis*. 1950;2(1):23-35.
- 500 37. Plooij M. Scrub typhus. *Nederlands Tijdschrift voor Geneeskunde*. 1950;94(ii):1490-  
501 98.
- 502 38. Hoogerheide C, Ensink GJ. Two small explosions of scrub typhus in Netherlands New-  
503 Guinea. *Documenta de Medicina Geographica et Tropica*. 1957;9(1):94-6.
- 504 39. Liat LB, Hadi TR, Nalim S, Gandahusada S. Preliminary survey of rodents in two  
505 transmigration schemes in South Sumatra, Indonesia. *Buletin Penelitian Kesehatan*.  
506 1978;6(1):15-23.
- 507 40. Hadi TR, Nalim S, Sukaeri, Dennis D. Scrub typhus survey of Biak and Owi islands:  
508 ectoparasites of small mammals and rickettsial isolations. *Southeast Asian Journal of*  
509 *Tropical Medicine and Public Health*. 1980;11(2):220-6.
- 510 41. Liat LB, Hadi TR, Sustriayu N. Rodent and scrub typhus survey in a ricefield at Kramat  
511 Tunngak area, Tanjung Priok, Jakarta, Indonesia. *Southeast Asian J Trop Med Public*  
512 *Health*. 1980;11(2):232-9.
- 513 42. Liat LB, Sustriayu N, Hadi TR, Bang YH. A study of small mammals in the Ciloto field  
514 station area, West Java, Indonesia, with special reference to vectors of plague and  
515 scrub typhus. *Southeast Asian J Trop Med Public Health*. 1980;11(1):71-80.
- 516 43. Dennis DT, Hadi TR, Brown RJ, Sukaeri S, Leksana B, Cholid R. A survey of scrub and  
517 murine typhus in the Ancol section of Jakarta, Indonesia. *Southeast Asian J Trop*  
518 *Med Public Health*. 1981;12(4):574-80.
- 519 44. Gandahusada S, Dennis D, Stafford EE, Hartono T, Soepadijo, Rasidi C, et al.  
520 Infectious disease risks to transmigrant communities in Indonesia: A survey in  
521 Lampung province, Sumatra. *Buletin Penelitian Kesehatan*. 1981;9(1):15-24.
- 522 45. Hadi TR, Sarbini S, Dennis DT. Survey of small mammal ectoparasites in West  
523 Sumatra, Indonesia. *Southeast Asian J Trop Med Public Health*. 1981;12(2):275-7.
- 524 46. Hadi T, Nalim S, Wasito S, Purnomo. A survey on small mammals and their parasites  
525 in Batam Island, Riau, Indonesia. *Buletin Penelitian Kesehatan*. 1982;10(1):1-6.
- 526 47. Hadi T, Nalim S. Fauna binatang mengerat dan parasitnya di beberapa daerah  
527 transmigrasi di Indonesia, serta hubungannya dengan penyakit Rickettsiosis yang  
528 ditularkan oleh vektor. *Buletin Penelitian Kesehatan*. 1983;11(2):44-9.
- 529 48. Hadi TR, Sarbini S, Brown RJ. Small mammalian ectoparasites from Mt. Bromo area,  
530 East Java, Indonesia. *Southeast Asian J Trop Med Public Health*. 1983;14(3):422-5.
- 531 49. Hadi TR, Supalin, Nalim S, Chang A. Ekologi penyakit scrub typhus di Unit Desa  
532 Transmigrasi Mulyorejo, Way Abung III, Lampung Utara. *Buletin Penelitian*  
533 *Kesehatan*. 1984;12(2):11-8.

- 534 50. Hadi TR, Nalim S. Survai vector dan reservoir penyakit zoonotik yang ditularkan oleh  
535 arthropoda di Desa Basi, Kecamatan Dondo, Kabupaten Buol - Tolitoli, Sulawesi  
536 Tengah, Indonesia. *Buletin Penelitian Kesehatan*. 1985;13(1):50-8.
- 537 51. Hadi TR, Sarbini S. Trombiculid mites of Sunter, North Jakarta Indonesia. *Southeast*  
538 *Asian J Trop Med Public Health*. 1985;16(1):126-7.
- 539 52. Goff ML, Durden LA. A new species and new records of chiggers (Acari:  
540 Trombiculidae) from North Sulawesi, Indonesia. *Int J Acarol*. 1987;13(3):209-11.  
541 <https://doi.org/10.1080/01647958708683769>.
- 542 53. Whitaker JO, Jr., Durden LA. Some ectoparasitic mites from mammals from Sulawesi  
543 Utara, Indonesia. *Entomological News*. 1987;98(1):26-30.
- 544 54. Nurisa I, Hadi TR, Nurindriani N. A study on bionomics of scrub typhus vector and its  
545 host species in a transmigration scheme of Kumpeh, Jambi, Sumatera. *Bul Penelit*  
546 *Pelayanan Kesehat*. 1988;16(2):35-47.
- 547 55. Durden LA, Page BF. Ectoparasites of commensal rodents in Sulawesi Utara,  
548 Indonesia, with notes on species of medical importance. *Med Vet Entomol*.  
549 1991;5(1):1-7.
- 550 56. Corwin AL, Soeprapto W, Widodo PS, Rahardjo E, Kelly DJ, Dasch GA, et al.  
551 Surveillance of rickettsial infections in Indonesian military personnel during peace  
552 keeping operations in Cambodia. *Am J Trop Med Hyg*. 1997;57(5):569-70.
- 553 57. Richards AL, Soeatmadji DW, Widodo MA, Sardjono TW, Yanuwadi B, Hernowati TE,  
554 et al. Seroepidemiologic evidence for murine and scrub typhus in Malang, Indonesia.  
555 *Am J Trop Med Hyg*. 1997;57(1):91-5.
- 556 58. Richards AL, Rahardjo E, Rusjdi AF, Kelly DJ, Dasch GA, Church CJ, et al. Evidence of  
557 *Rickettsia typhi* and the potential for murine typhus in Jayapura, Irian Jaya,  
558 Indonesia. *Am J Trop Med Hyg*. 2002;66(4):431-4.
- 559 59. Richards AL, Ratiwayanto S, Rahardjo E, Kelly DJ, Dasch GA, Fryauff DJ, et al.  
560 Serologic evidence of infection with ehrlichiae and spotted fever group rickettsiae  
561 among residents of Gag Island, Indonesia. *Am J Trop Med Hyg*. 2003;68(4):480-4.
- 562 60. Ristiyanto, Boewono D, Handayani F, Notosoedarmo S. Keanekaragaman ektoparasit  
563 pada tikus rumah *Rattus tanezumi* dan tikus Polinesia *Rattus exulans* di daerah  
564 enzootik pes lereng Gunung Merapi, Jawa Tengah. *Jurnal Ekologi Kesehatan*.  
565 2004;3(2).
- 566 61. Ristiyanto, Mulyono A, Agustina M, Yuliadi B, Muhidin. Indeks keragaman  
567 ektoparasit pada tikus rumah *Rattus tanezumi* temminck, 1844 dan tikus Polinesia *R.*  
568 *exulans* (Peal, 1848) di daerah enzootik pes lereng Gunung Merapi, Jawa Tengah.  
569 *Vektora: Jurnal Vektor dan Reservoir Penyakit*. 2009;1(2):73-86.

- 570 62. Punjabi NH, Taylor WRJ, Murphy GS, Purwaningsih S, Picarima H, Sisson J, et al.  
571 Etiology of acute, non-malaria, febrile illnesses in Jayapura, Northeastern Papua,  
572 Indonesia. *Am J Trop Med Hyg.* 2012;86(1):46-51.
- 573 63. Ristiyanto, Handayani F, Mulyono A, Yuliadi B. Ektoparasit tungau trombikulid dan  
574 inangnya serta peluang penularan scrub typhus di beberapa daerah Pulau Jawa.  
575 *Vektora.* 2016;8(1):41-52.
- 576 64. Widjaja S, Williams M, Winoto I, Farzeli A, Stoops CA, Barbara KA, et al. Geographical  
577 Assessment of Rickettsioses in Indonesia. *Vector Borne Zoonotic Dis.* 2016;16(1):20-  
578 5. Epub 2016/01/16. doi: 10.1089/vbz.2015.1840.
- 579 65. Lokida D, Hadi U, Lau C-Y, Kosasih H, Liang CJ, Rusli M, et al. Underdiagnoses of  
580 Rickettsia in patients hospitalized with acute fever in Indonesia: observational study  
581 results. *BMC Infect Dis.* 2020;20(1):364. doi: 10.1186/s12879-020-05057-9.
- 582 66. Richards AL, Teik OC, Lockman JL, Rahardjo E, Wignall FS. Scrub typhus in an  
583 American living in Jakarta, Indonesia. *Infectious Diseases in Clinical Practice.*  
584 1997;6(4):268-72.
- 585 67. de Smith M, Goodchild M, Longley P. Classification and clustering. 2020. In:  
586 *Geospatial Analysis [Internet].* 6<sup>th</sup> edition. Available from:  
587 <https://www.spatialanalysisonline.com/HTML/index.html>.
- 588 68. ESRI. Data classification methods. 2022 [Cited 20 January 2022] Available from:  
589 [https://pro.arcgis.com/en/pro-app/2.7/help/mapping/layer-properties/data-](https://pro.arcgis.com/en/pro-app/2.7/help/mapping/layer-properties/data-classification-methods.htm)  
590 [classification-methods.htm](https://pro.arcgis.com/en/pro-app/2.7/help/mapping/layer-properties/data-classification-methods.htm).
- 591 69. Elliott I, Pearson I, Dahal P, Thomas NV, Roberts T, Newton PN. Scrub typhus  
592 ecology: a systematic review of *Orientia* in vectors and hosts. *Parasit Vectors.*  
593 2019;12(1):513. doi: 10.1186/s13071-019-3751-x.
- 594 70. Li T, Yang Z, Dong Z, Wang M. Meteorological factors and risk of scrub typhus in  
595 Guangzhou, southern China, 2006–2012. *BMC Infect Dis.* 2014;14(1):139. doi:  
596 10.1186/1471-2334-14-139.
- 597 71. Shah HA, Huxley P, Elmes J, Murray KA. Agricultural land-uses consistently  
598 exacerbate infectious disease risks in Southeast Asia. *Nature Commun.*  
599 2019;10(1):4299. doi: 10.1038/s41467-019-12333-z.
- 600 72. Indonesian Medical Council. Standar Kompetensi Dokter Indonesia Jakarta 2012.  
601 2022 [Cited 21 April 2022] Available from:  
602 [http://www.kki.go.id/assets/data/arsip/SKDI\\_Perkonsil,\\_11\\_maret\\_13.pdf](http://www.kki.go.id/assets/data/arsip/SKDI_Perkonsil,_11_maret_13.pdf).
- 603 73. Peacock SJ, Newton PN. Public health impact of establishing the cause of bacterial  
604 infections in rural Asia. *Trans R Soc Trop Med Hyg.* 2008;102(1):5-6. doi:  
605 10.1016/j.trstmh.2007.06.004.

- 606 74. Salje J, Weitzel T, Newton PN, Varghese GM, Day N. Rickettsial infections: A blind  
607 spot in our view of neglected tropical diseases. PLoS Negl Trop Dis.  
608 2021;15(5):e0009353. doi: 10.1371/journal.pntd.0009353.
- 609 75. Kende M, Graves S. Survey of rickettsial antibodies at two local sites and review of  
610 rickettsiosis in Papua New Guinea. P N G Med J. 2003;46(1-2):53-62.
- 611 76. Grigg MJ, William T, Clemens EG, Patel K, Chandna A, Wilkes CS, et al. Rickettsioses  
612 as major etiologies of unrecognized acute febrile illness, Sabah, East Malaysia.  
613 Emerg Infect Dis. 2020;26(7):1409-19. doi: 10.3201/eid2607.191722.
- 614 77. Blake FG, Maxcy KF, Sadusk JF, Jr., Kohls GM, Bell EJ. Studies on tsutsugamushi  
615 disease (scrub typhus, mite-borne typhus) in New Guinea and adjacent islands:  
616 Epidemiology, clinical observations, and etiology in the Dobadura area. Am J  
617 Epidemiol. 1945;41(3):243-373. doi: 10.1093/oxfordjournals.aje.a119018.
- 618 78. Bender A, Python A, Lindsay SW, Golding N, Moyes CL. Modelling geospatial  
619 distributions of the triatomine vectors of *Trypanosoma cruzi* in Latin America. PLoS  
620 Negl Trop Dis. 2020;14(8):e0008411. doi: 10.1371/journal.pntd.0008411.



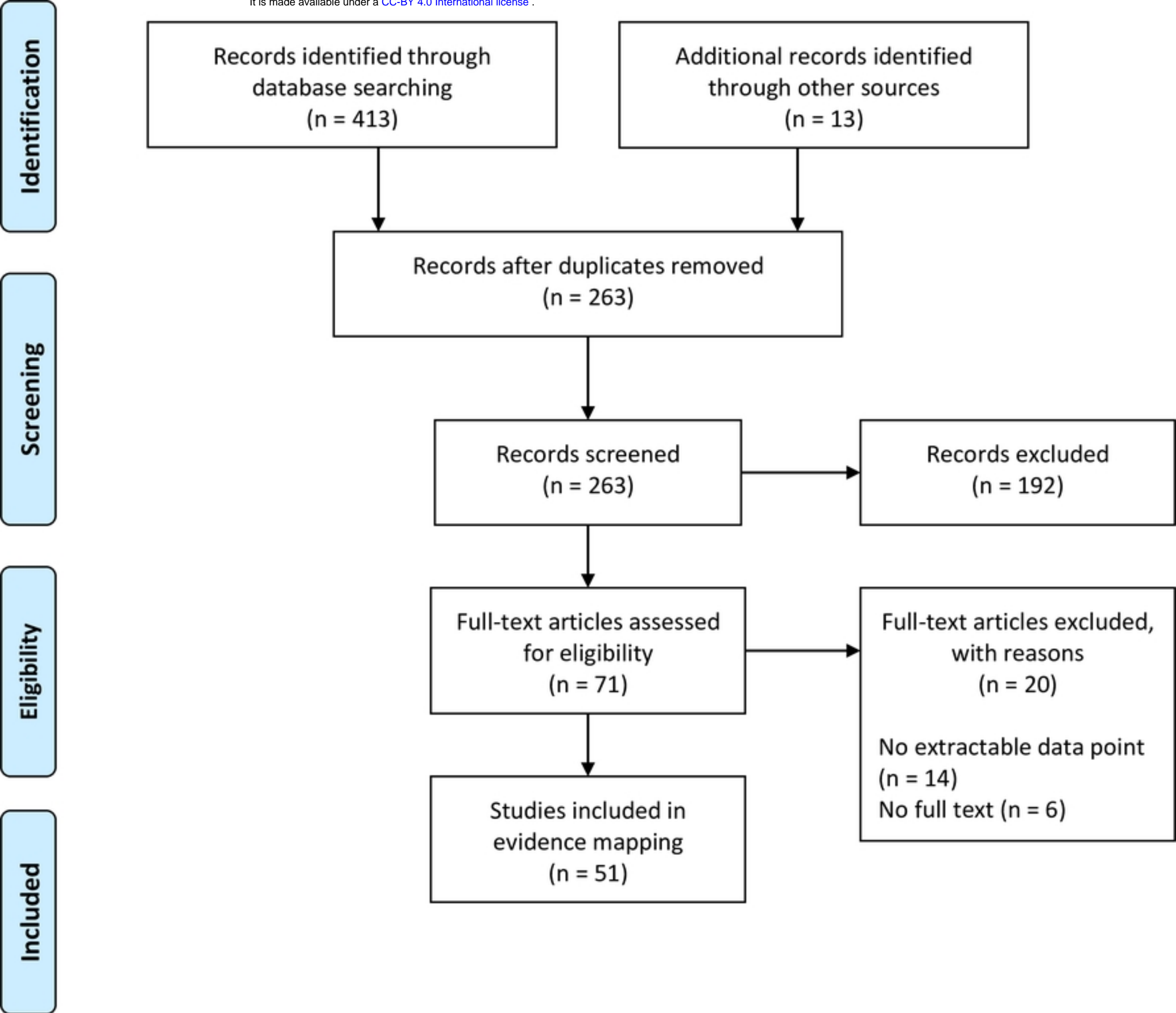


Fig 1

Data category

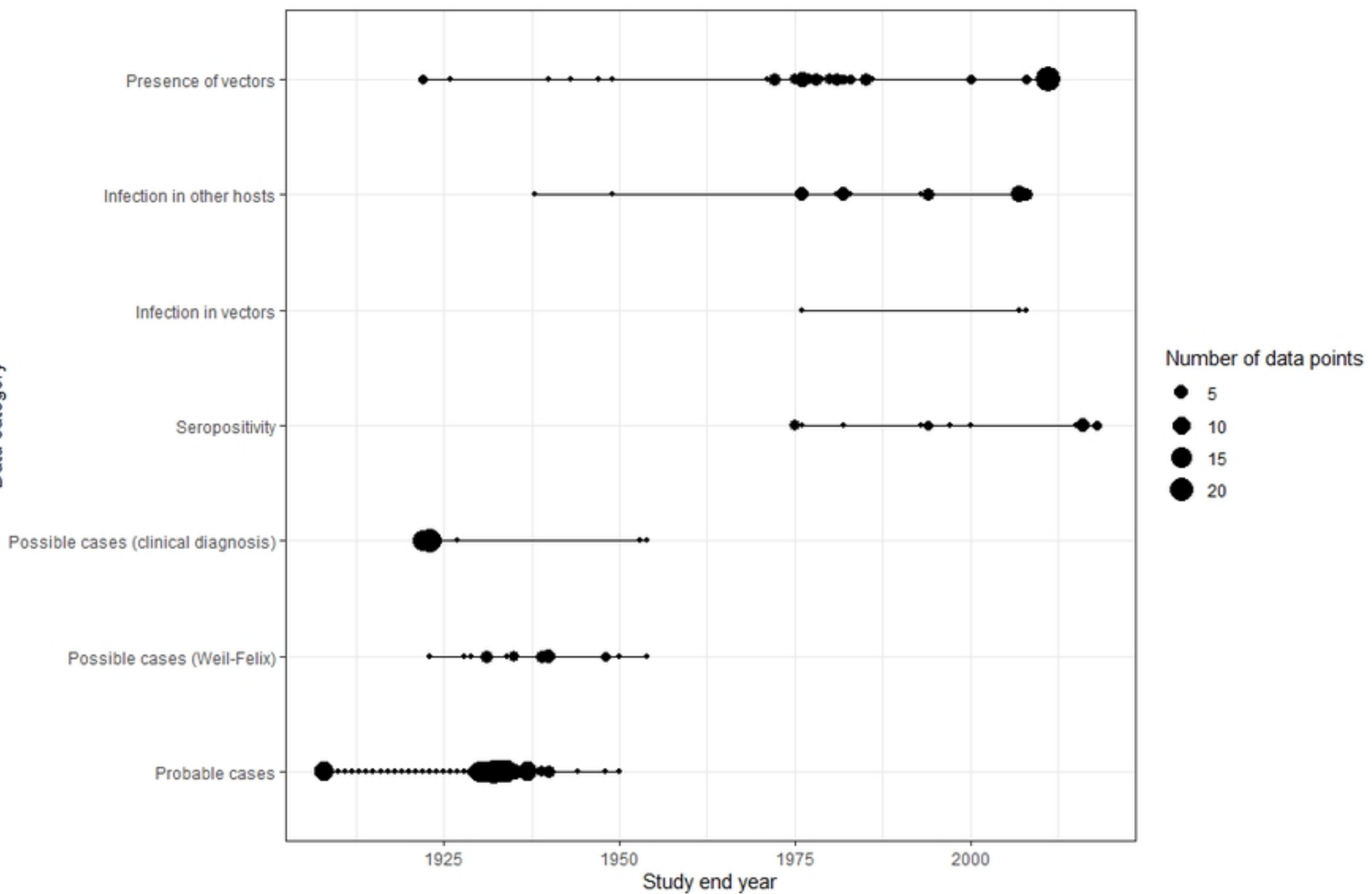


Fig 2

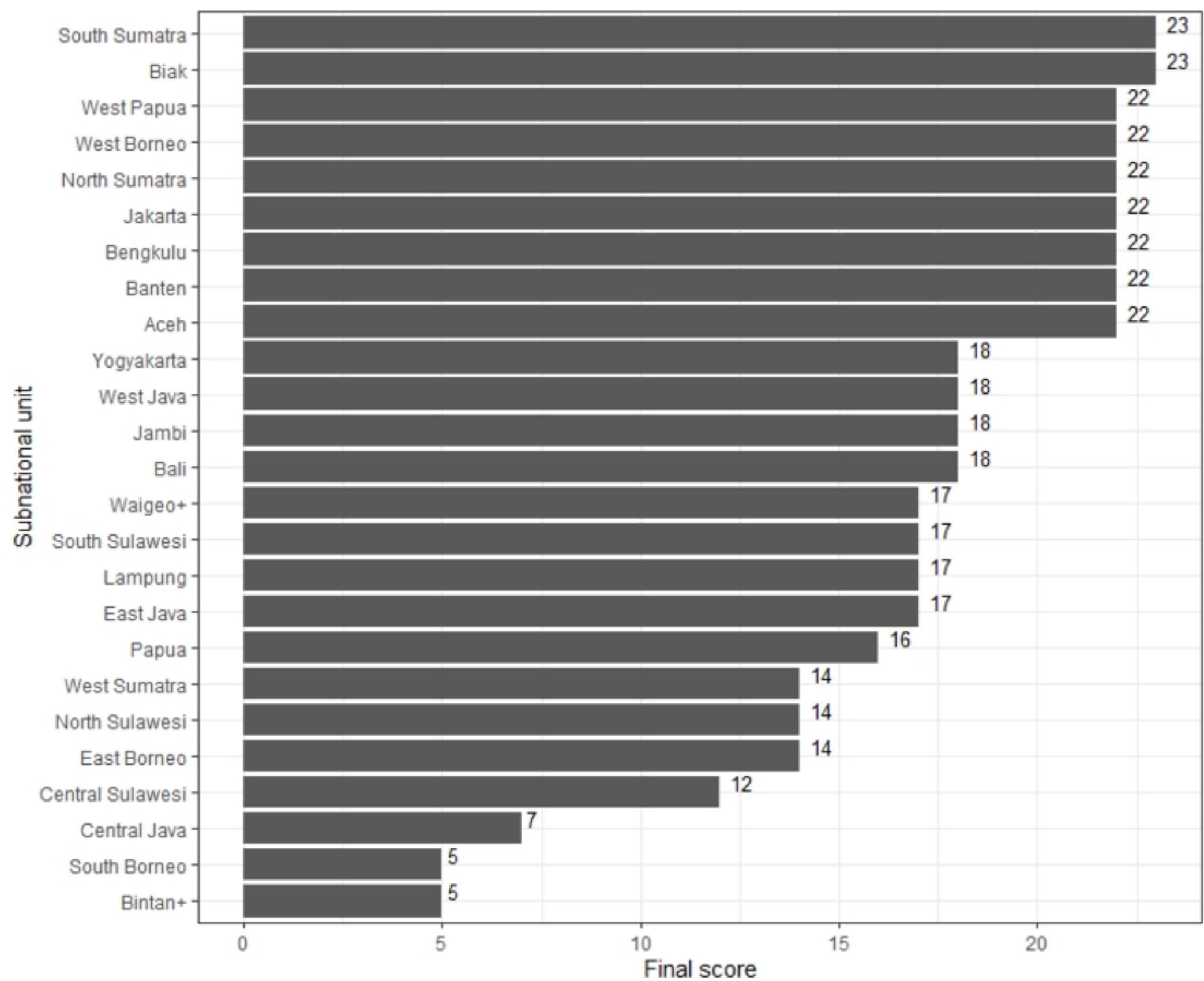
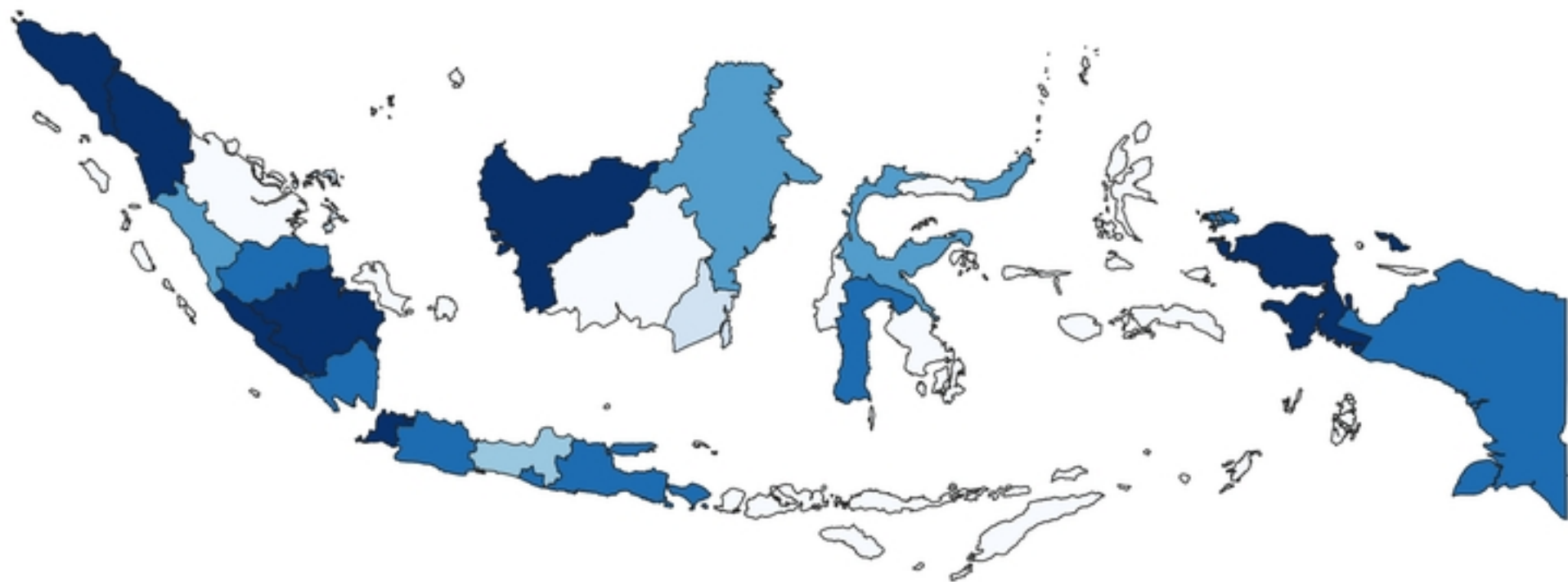


Fig 3



Score breaks

0

1 - 5

6 - 10

11 - 15

16 - 20

21 and above

Fig 4