



25 **Abstract**

26

27 **Background:** Obstructive sleep apnea (OSA) is an independent risk factor for cardiovascular  
28 (CV) morbidity and mortality, but the benefit of continuous positive airway pressure (CPAP)  
29 therapy is uncertain. However, most randomized-controlled trials have focused on the role of  
30 CPAP in secondary prevention although there is growing evidence of a potential benefit on  
31 early CV disease. Weight loss in combination with CPAP may be superior but is difficult to  
32 achieve and maintain with conventional measures alone. The aim of this study was to gain  
33 insights into the effect of CPAP on early atherosclerotic processes and to compare it to a  
34 glucagon-like-peptide (GLP)-1-mediated weight loss regimen in OSA.

35 **Methods:** We performed a randomized proof-of-concept study (clinicaltrials.gov:  
36 NCT04186494) comparing CPAP, a liraglutide-based weight loss regimen (Lir) alone or both  
37 in combination for 24 weeks in 30 non-diabetic patients with moderate to severe OSA ( $50 \pm 7$   
38 years, 80% males, apnea-hypopnea index [AHI]  $50 \pm 19$ /hr, body mass index [BMI]  $35.0 \pm 3$   
39  $\text{kg/m}^2$ ). Baseline characteristics were similar between groups. Beside extensive evaluation for  
40 CV risk factors and endothelial function at baseline and end of study, subjects underwent  
41  $^{18}\text{F}$ -fluorodeoxyglucose (FDG)-PET-CT for measurement of aortic wall inflammation  
42 (target-to-background ratio [TBR]) and coronary CT angiography (CCTA) for semi-  
43 automated coronary plaque analysis.

44 **Results:** CPAP alone and combination resulted in greater reduction in AHI than Lir alone at  
45 24 weeks (mean difference  $-45$ /hr and  $-43$ /hr, respectively, vs  $-12$ /hr,  $p < 0.05$ ). Both Lir and  
46 combination led to significant weight loss of  $6 \pm 3\%$  and  $4 \pm 4\%$ , respectively. Despite CPAP  
47 resulting in small weight gain, only the CPAP alone group demonstrated a significant  
48 decrease in vascular inflammation (aortic wall TBR from  $2.03 \pm 0.34$  to  $1.84 \pm 0.43$ ,  $p = 0.010$ )  
49 associated with improvement in endothelial function and decrease in C-reactive protein.  
50 Low-attenuation coronary artery plaque volume as marker of unstable plaque also decreased

51 with CPAP (from  $571 \pm 490$  to  $334 \pm 185 \text{mm}^3$ ) and with combination therapy (from  $401 \pm 145$  to  
52  $278 \pm 126 \text{mm}^3$ ) but not with Lir.

53 **Conclusion:** These data suggest that CPAP therapy, but not GLP-1 mediated weight loss,  
54 improves vascular inflammation and reduces low-attenuation coronary artery plaque volume  
55 in OSA patients. These novel findings support the benefit of CPAP therapy in modifying  
56 early CV disease.

57 **Clinical Perspective**

58 **What is new?**

- 59     • This is the first study comparing standard CPAP therapy to a GLP-1 mediated weight  
60       loss regimen in obstructive sleep apnea (OSA).
- 61     • The study utilized 18F-FDG PET CT and artificial intelligence-enabled coronary CT  
62       quantification of coronary artery plaque subtypes to determine treatment effects on  
63       early atherosclerotic disease processes.

64 **What are the clinical implications?**

- 65     • CPAP in contrast to GLP-1-mediated weight loss may improve early atherosclerotic  
66       and potentially modifiable disease processes in obstructive sleep apnea (OSA).
- 67     • These data support the benefit of CPAP in the primary prevention of cardiovascular  
68       diseases in OSA.

69

## 70 **Non-standard Abbreviations and Acronyms**

- 71 • OSA – obstructive sleep apnea
- 72 • CV – cardiovascular
- 73 • CAD – coronary artery disease
- 74 • CPAP – continuous positive airway pressure
- 75 • RCT – randomized controlled trial
- 76 • PET-CT - positron emission tomography-computed tomography
- 77 • FDG - fluoro2-deoxy-D-glucose
- 78 • CCTA - coronary computed tomographic angiography
- 79 • CP – calcified plaque
- 80 • NCP – non-calcified plaque
- 81 • LD – low density
- 82 • GLP – glucagon like peptide
- 83 • AHI – apnea/hypopnea index
- 84 • BMI – body mass index
- 85 • ABPM – ambulatory blood pressure measurement
- 86 • PSG – polysomnography
- 87 • AASM – American Academy of Sleep Medicine
- 88 • RHI – reactive hyperemia index
- 89 • PAT – peripheral arterial tone
- 90 • TBR – target-to-background ratio
- 91 • CAC – coronary artery calcium
- 92 • HbA1c - glycosylated hemoglobin
- 93 • SpO<sub>2</sub> - oxygen saturation
- 94 • ODI – oxygen desaturation index

95 • TST90 - time spent with SpO<sub>2</sub><90% of total sleep time

96

## 97 **Introduction**

98           Obstructive sleep apnea (OSA) is a highly prevalent condition conveying a significant  
99 public health burden<sup>1,2</sup>. Corroborated by numerous studies it has been identified as a  
100 significant and potentially modifiable risk factor for the development and progression of  
101 various cardiovascular (CV) diseases, such as coronary artery disease (CAD), hypertension,  
102 heart failure and stroke leading to substantial morbidity and mortality<sup>2,3</sup>.

103           The benefit of continuous positive airway pressure (CPAP) therapy, the treatment of  
104 choice for the majority of patients, on CV disease processes, remains uncertain and although  
105 impacted by important methodological limitations, secondary prevention trials have failed to  
106 demonstrate a significant modifying effect on CV outcomes<sup>4-6</sup>. However, various randomized  
107 controlled trials (RCT) and meta-analyses have supported a benefit of CPAP on CV risk  
108 factors such as blood pressure<sup>7,8</sup>, endothelial dysfunction<sup>9</sup>, arterial stiffness<sup>10</sup>, and circulating  
109 inflammatory markers<sup>11,12</sup> and thus, CPAP may be particularly beneficial in the early stages  
110 of CV disease processes. There is a lack of studies focusing on early atherosclerotic processes  
111 in OSA and in the absence of definite primary prevention RCT's, which are an unrealistic  
112 goal in the field, such studies may assist in the guidance of personalized treatments.  
113 Advances in CV imaging techniques may help to fill this gap. The use of positron emission  
114 tomography-computed tomographic (PET-CT) imaging with 18F-fluoro2-deoxy-D-glucose  
115 (18F-FDG) to measure vascular inflammation is an emerging method of predicting CV  
116 disease. In the largest cohort study to date comprising 932 cancer patients without a history  
117 of CV disease, aortic wall uptake of 18F-FDG was the strongest predictor of a subsequent  
118 vascular event<sup>13</sup>.

119           Coronary CT angiography (CCTA) is widely used to evaluate CAD and CV risk,  
120 traditionally focusing on calcified plaque (CP) and coronary artery calcium scores<sup>14</sup>.  
121 However, recent advances in artificial intelligence analysis methods have allowed for semi-

122 automated quantification of non-calcified (NCP) and low-density (LD NCP) plaques, which  
123 have been shown to be stronger predictors of future cardiovascular events than calcified  
124 plaques<sup>15,16</sup>.

125 We hypothesized that CPAP improves early CV disease processes. To explore this  
126 hypothesis and to inform the design of future large RCT's, we performed this proof-of-  
127 concept prospective RCT comparing CPAP versus a glucagon-like peptide (GLP)-1  
128 (Liraglutide) -based weight loss regimen versus both in combination. This comparison was  
129 chosen based on the work of Chirinos et al, who found that a combination of weight loss and  
130 CPAP therapy may be superior to either treatment alone across a range of outcomes<sup>17</sup>. We  
131 integrated the primary outcome determining early CV disease with various risk markers in  
132 relation to inflammation, endothelial function, and blood pressure.

## 133 **Methods**

### 134 Study Protocol

135 This was a proof-of-concept, randomized, parallel, 24-week trial comparing the  
136 effects of CPAP, a liraglutide-based weight loss regimen (Lir) or both in combination in  
137 adults with newly diagnosed moderate to severe OSA (apnea/hypopnea index [AHI]>15/hr).  
138 Eligible participants were aged 18-60 years, had a body-mass index (BMI) between 30–40  
139 kg/m<sup>2</sup>, and no history of diabetes, heart failure or unstable cardiovascular disease defined as  
140 lack of cardiovascular event within the preceding 3 months. Detailed inclusion and exclusion  
141 criteria are provided in Supplementary Table S1 and the trial design with outcome measures  
142 is outlined in Supplementary Figure S1. Randomization was conducted using block design.  
143 The study was approved by the Ethics Committee of St. Vincent's University Hospital and  
144 registered with clinical trials.gov (NCT04186494). Participants gave written informed  
145 consent.

### 146 Interventions



147 In the CPAP and combined-intervention groups, participants were initiated on CPAP  
148 therapy according to the standard protocol in our center. Briefly, patients undergo an  
149 education and mask fitting session with a clinical sleep nurse specialist before setup on auto-  
150 PAP at home (AirSense 10, ResMed, UK). Adherence to CPAP therapy is monitored  
151 remotely and subjects are followed up by the treating clinician and specialist nurse after 4-6  
152 weeks. Pressure settings are adjusted according to the discretion of the treating clinician.

153 Participants in the Lir and combination groups received education about  
154 administration of subcutaneous injections and specific guidance about Liraglutide. In  
155 addition, counselling on diet and exercise was provided at 4 and 12 weeks. Advice was based  
156 around accepted Irish public health guidelines following the food pyramid  
157 recommendations<sup>18</sup> on portion sizes and food groups and current recommended weekly  
158 exercise amounts of 150 minutes of moderate intensity exercise per week<sup>19</sup>. Subjects  
159 commenced Liraglutide (Novo Nordisk, Bagsværd, Denmark) 0.6mg once daily at week 1,  
160 increasing by 0.6mg weekly until the maximum dose of 3.0mg was achieved, which was then  
161 continued for the 24-week intervention. Progress, adverse effects, and safety were monitored  
162 routinely at 4 and 12 weeks or in between if required, and serum amylase levels were  
163 checked monthly.

#### 164 Study Assessments and End Points

165 All assessments were performed at baseline and at 24 weeks (Supplementary Figure  
166 S1). Fasting blood samples for measurement of metabolic, biochemical, and inflammatory  
167 parameters were obtained in the morning after overnight polysomnography (PSG). 24-hour  
168 ambulatory blood pressure measurement (ABPM) was performed using WatchBP03 devices  
169 (Microlife Corp., Taipei, Taiwan). Measurements were taken every 20 minutes during the  
170 day and every 30 minutes at night-time. Non-dipping blood pressure status was defined as  
171 <10% decline in systolic blood pressure from day to night.

172 Polysomnography (PSG)

173 Attended, in-laboratory PSG was performed using standard techniques  
174 (SOMNOmedics, Randersacker, Germany) and analyzed according to the American  
175 Academy of Sleep Medicine (AASM) 2.6 scoring criteria<sup>20</sup>. An apnea was defined as a 90%  
176 drop in airflow from baseline for >10 seconds. A hypopnea was defined as a drop in airflow  
177 of >30% from baseline for >10 seconds, accompanied by an oxygen desaturation of 3% or an  
178 arousal. Repeat PSG at 24 weeks was performed on CPAP for those randomized to this  
179 treatment.

180 Endothelial Function

181 Evaluation of peripheral endothelial function via the EndoPAT 2000 device (Itamar  
182 Medical, Israel) is a validated, FDA-approved method<sup>21</sup>. Endothelial function was expressed  
183 as reactive hyperemia index (RHI) calculated as the ratio of the post-occlusion to pre-  
184 occlusion peripheral arterial tone (PAT) amplitude of the tested arm, divided by the post-  
185 occlusion to pre-occlusion ratio obtained in the control arm<sup>22</sup>. Measurements were performed  
186 according to the manufacturer's instructions with a cut-off value of <1.69 defining endothelial  
187 dysfunction.

188 <sup>18</sup>F-FDG PET-CT

189 All <sup>18</sup>F-FDG PET-CT examinations were performed on a Siemens Biograph mCT  
190 PET/CT system (Siemens Healthineers, Erlangen, Germany) in line with prior  
191 recommendations<sup>23</sup> (see Supplementary Methods). PET image analysis to measure aortic wall  
192 vascular inflammation was performed in consensus by 2 radiologists blinded to all clinical  
193 information, using dedicated PET-CT image viewing software (SyngoVia, Siemens  
194 Healthineers, Erlangen, Germany) according to a previously validated methodology<sup>24,25</sup>.  
195 Briefly, sequential circular regions of interest were placed across the aortic wall from the root  
196 to the abdominal bifurcation on axial images, with total aorta SUV<sub>max</sub> calculated as the mean

197 of these individual measurements. A target-to-background ratio (TBR) was calculated by  
198 dividing total aorta SUV<sub>max</sub> by mediastinal blood pool activity (average of three  
199 measurements of blood pool SUV<sub>max</sub> made at the SVC on sequential slices).

#### 200 Coronary Computed Tomography Angiography (CCTA) Protocol and Image Analysis

201 CCTA images were acquired on a 64-slice single-source CT scanner (Gemstone 750  
202 HD, GE, Milwaukee, USA) according to standard CCTA protocols (see Supplementary  
203 Methods). Coronary artery calcium (CAC) score was assessed using the Agatston score<sup>26</sup>.  
204 Coronary arteries were visually assessed on a 15-segment basis by a cardiothoracic  
205 radiologist. Quantitative assessment of atherosclerotic plaque subtypes was performed using  
206 previously validated semiautomatic software (CVi42, Circle Cardiovascular Imaging Inc,  
207 Calgary, Canada)<sup>27</sup> by one observer blinded to all clinical information (see Supplementary  
208 Methods). Plaque volumes were measured for the following plaque subtypes: total plaque,  
209 calcified plaque (CP), noncalcified plaque (NCP) and low-attenuation plaque (LD NCP)  
210 defined by an attenuation of <30 Hounsfield units<sup>16</sup>. CCTA was performed at baseline in all  
211 subjects. Ethical approval for follow-up CCTA was only granted for subjects with visible CV  
212 disease at baseline due to concern of excess radiation exposure.

#### 213 Statistical Analysis

214 This was an exploratory proof-of-concept study with the purpose of aiding the  
215 planning of future larger RCT's. Therefore, all statistical analysis presented is for the purpose  
216 of exploring signals in treatment differences between groups. Comparisons between groups  
217 were performed via one-way ANOVA with post-hoc Bonferroni analysis or Chi-Square test  
218 for categorical variables. Within-group changes were evaluated by paired T-tests. Univariate  
219 Pearson correlation analysis was performed to assess the correlation between baseline and  
220 OSA parameters and CV outcome variables. Statistical analysis was carried out using IBM  
221 SPSS Statistics Version 27.

## 222 **Results**

### 223 **Baseline characteristics**

224 450 consecutive patients attending our Sleep Centre were screened of whom 53 met  
225 the inclusion and exclusion criteria. 23 did not provide consent. As planned, 30 subjects were  
226 enrolled and randomized. Baseline characteristics of the study population are provided in  
227 Table 1. As expected for a clinical OSA population, there was a predominance of male,  
228 middle-aged participants and most had severe OSA with an AHI of  $50\pm 19$ /hour. The groups  
229 were similar with regards to demographic, anthropometric and clinical parameters. There was  
230 no significant difference between the groups in 24-hour ABPM, glycosylated hemoglobin  
231 (HbA1c) and fasting lipids. 9 patients were on statin treatment: 2 for previously established  
232 but stable CV disease, and 7 for dyslipidemia as primary prevention.

### 233 **Study Progress**

234 All 30 patients completed the trial and are included in the final analysis  
235 (Supplementary Figure S2). Of the 10 subjects commenced on CPAP therapy, one patient  
236 crossed over to the Liraglutide arm due to intolerance of CPAP therapy. In each of the  
237 Liraglutide and combination groups, one subject crossed over to the CPAP arm due to  
238 gastrointestinal side effects with Liraglutide. Thus, the final dataset included  $n=11$  in the  
239 CPAP group,  $n=10$  in the Liraglutide group and  $n=9$  in the combination group. All groups  
240 remained similar in all baseline characteristics (Supplementary table S2). Apart from those  
241 having to stop Liraglutide, adherence to the pharmacological treatment was good as reported  
242 by the subjects and by monitoring the contents of the pre-filled pens. Serum amylase was  
243 monitored monthly as recommended for patients taking Liraglutide, and there was no  
244 significant rise during the trial in any subject. Mean CPAP adherence in the CPAP group was  
245  $5.8\pm 1.4$  hours per night, while adherence in the combination group was  $4.7\pm 1.8$  hours per  
246 night.

247 Anthropometrics, blood pressure, fasting lipids and C-reactive protein (CRP)

248 As demonstrated in Table 2, both Liraglutide alone and in combination with CPAP  
249 led to significant weight loss of  $6\pm 3\%$  and  $4\pm 4\%$ , respectively, and this was accompanied by  
250 an improvement in fasting triglyceride levels. In contrast, subjects on CPAP alone showed an  
251 increase in body weight although this did not reach statistical significance ( $2\pm 5\%$ ,  $p=0.092$ ).

252 No change in 24-hour ABPM was seen in either the CPAP or the combination group,  
253 but systolic blood pressure improved in the Liraglutide group ( $122\pm 8$  vs  $116\pm 8$  mmHg,  $p =$   
254  $0.031$ ). At baseline, there were 8 non-dippers in the Liraglutide group, 7 in the CPAP group  
255 and 5 in the combination group. There was no significant change in non-dipping status in  
256 any treatment group at 24 weeks (Table 2).

257 CRP levels improved the most in the CPAP group but there were no statistical  
258 differences between groups (Table 2).

259 OSA parameters

260 Polysomnographic respiratory variables at baseline and at follow-up are presented in  
261 Table 3. As expected, CPAP alone or in combination resulted in effective treatment of OSA.  
262 Liraglutide-mediated weight loss was also accompanied by significant improvement in AHI,  
263 but the effect was significantly inferior to CPAP, and the AHI remained high at  $42\pm 16$ /hr.

264 Endothelial Function

265 A RHI via the EndoPAT device of  $<1.69$ , indicative of endothelial dysfunction, was  
266 present in 2 patients in the Lir group, in 7 patients in the CPAP group and in 2 patients in the  
267 combination group at baseline ( $p = 0.036$ ). There was a negative correlation between RHI  
268 and overnight baseline oxygen saturation ( $SpO_2$ ) ( $r = -0.527$ ,  $p = 0.003$ ) and night-time  
269 systolic blood pressure ( $r = -0.360$ ,  $p = 0.05$ ), but there was no other correlation with OSA  
270 variables. Following the treatment protocol, there was a significant improvement in RHI in  
271 the CPAP group only ( $p = 0.048$ ).

272 Changes in vascular inflammation evaluated by 18F-FDG PET-CT

273 Vascular inflammation of the aortic wall measured via PET-CT correlated with the  
274 degree of baseline endothelial dysfunction as well as with baseline CRP (Supplementary  
275 Table S3). In addition, there was a significant relationship between vascular inflammation  
276 and both the magnitude of systolic blood pressure nocturnal dip and nocturnal systolic blood  
277 pressure. Furthermore, vascular inflammation correlated significantly with the severity of  
278 nocturnal hypoxia as measured via basal oxygen saturation (SpO<sub>2</sub>) ( $r = -0.499$ ,  $p = 0.005$ ).  
279 There was also a trend towards significant correlation between vascular inflammation and  
280 baseline AHI ( $r=0.342$ ,  $p=0.064$ ) (Supplementary Table S3).

281 To elucidate the potential confounding effects of statin treatment on vascular  
282 inflammation, we repeated the correlation analysis excluding subjects on statin treatment.  
283 Correlations between baseline vascular inflammation and AHI and markers related to the  
284 severity of intermittent hypoxia became stronger (Supplementary Table S3) and remained  
285 significant after controlling for BMI (AHI:  $r = 0.482$ ,  $p = 0.031$ , oxygen desaturation index  
286 [ODI]:  $r = 0.497$   $p = 0.026$ , time spent with SpO<sub>2</sub><90% of total sleep time [TST90]:  $r =$   
287  $0.471$ ,  $p = 0.036$ ).

288 Investigating the change in vascular inflammation over 24 weeks, there was a  
289 significant reduction in the CPAP group (change in aortic wall TBR from  $2.03\pm0.34$  to  
290  $1.84\pm0.43$ ,  $p = 0.010$ ; representative example shown in Figure 1), which was significant when  
291 compared to the Liraglutide group ( $p = 0.028$ ) with a similar trend towards a reduction in  
292 inflammation in the combination group. Liraglutide-mediated weight loss alone, however, did  
293 not result in a significant change (Figure 2A). The change in vascular inflammation showed a  
294 significant negative correlation with change in basal SpO<sub>2</sub> ( $r=-0.412$ ,  $p=0.026$ ) and a close to  
295 significant correlation with change in AHI ( $r=0.337$ ,  $p=0.074$ ). Again, when patients on

296 statins were excluded, the changes in vascular inflammation in the CPAP and combination  
297 groups were enhanced (Figure 2B).

### 298 Changes in coronary artery plaque volumes

299 Visual analysis of baseline CCTA revealed CAD in 17/30 (47%) subjects, of whom 2  
300 had been previously diagnosed. The CAC score in those patients was  $65 \pm 194$  with no  
301 difference between treatment groups at baseline. Of the 17 subjects with visually identifiable  
302 CAD, 11 had single-vessel disease (5 Lir, 3 CPAP, 3 combination), 4 had two-vessel disease  
303 (1 Lir, 1 CPAP, 2 combination, and 2 had three-vessel disease (1 CPAP, 1 combination)).  
304 Quantitative assessment of calcified plaque (CP) volume correlated closely with the visually  
305 obtained CAC score ( $r = 0.767$ ,  $p < 0.001$ ), but there was no relationship between non-  
306 calcified (NCP) or low-attenuation (LD NCP) volume with this measure.

307 At baseline, all plaque subtype volumes were similar between groups. There was a  
308 trend towards significant correlation between LD NCP volume and baseline fasting  
309 triglyceride levels ( $r = 0.366$ ,  $p = 0.051$ ), and this relationship remained similar following  
310 adjustment for BMI ( $r = 0.365$ ,  $p = 0.056$ ). There were no significant correlations between  
311 plaque measures and OSA parameters in the whole cohort, but TST90 correlated with CP  
312 volume in the group who did not take statin medication ( $r = 0.607$ ,  $p = 0.005$ ).

313 The 17 subjects with visible coronary artery plaque on the baseline scan underwent  
314 repeat CCTA after 24 weeks, and those were evenly distributed between groups (6 Lir, 6  
315 CPAP, 5 combination). Although limited given the small group, there was a reduction in LD  
316 NCP volume with CPAP ( $619 \pm 532$  vs  $364 \pm 190$  mm<sup>3</sup>) and with combination therapy  
317 ( $401 \pm 145$  vs  $278 \pm 126$  mm<sup>3</sup>), and there was no change with Liraglutide alone ( $545 \pm 335$  vs  
318  $503 \pm 229$  mm<sup>3</sup>) (Figure 3). Changes in total and NCP volume followed similar patterns but  
319 there were no relevant changes in CP burden with any treatment. Representative images from  
320 a study participant of the CPAP alone arm are presented in Figure 4.

321 Evaluating the total group of subjects undergoing repeat CCTA, there was a  
322 significant univariate correlation between the reduction in NCP volume and the reduction in  
323 TST90 ( $r = 0.505$ ,  $p = 0.038$ ), and a trend towards significant correlation with the reduction  
324 in AHI and ODI ( $r = 0.457$ ,  $p = 0.065$  and  $r = 0.463$ ,  $p = 0.061$ , respectively) (Figure 5).  
325 Furthermore, there was a trend towards significant correlations between the reduction in  
326 vascular inflammation and reduction in both NCP and LD NCP volume ( $r = 0.447$ ,  $p = 0.072$   
327 and  $r = 0.436$ ,  $p = 0.080$ , respectively). Finally, improvement in endothelial function as  
328 measured by the RHI showed a close to statistically significant correlation with reduction in  
329 total plaque volume, but not with either NCP or LD NCP volume ( $r = -0.475$ ,  $p = 0.063$ ).

## 330 **Discussion**

331 In this report we demonstrate that CPAP therapy but not a GLP-1-mediated weight  
332 loss regimen improves early and potentially modifiable atherosclerotic processes in OSA. As  
333 this was a proof-of-concept study with only a small number of participants the statistical  
334 differences in improvement in vascular inflammation between the treatment arms are  
335 particularly striking and support the benefit of CPAP in the primary prevention of CV disease  
336 processes in OSA. The role of CPAP therapy in the treatment of CV diseases and particularly  
337 in the prevention of CV events in subjects with OSA has been subject of major controversy.  
338 Three randomized controlled trials failed to demonstrate attenuation in the incidence of CV  
339 events in cohorts with established CV diseases<sup>4-6</sup>. However, exclusion of patients with severe  
340 daytime sleepiness and low adherence to CPAP therapy were substantial limitations and in  
341 contrast, analyses from large real-world studies revealed a significant association of CPAP  
342 use with lower all-cause mortality<sup>28-30</sup>. Furthermore, several studies and meta-analyses have  
343 demonstrated a clinically meaningful improvement with CPAP of various cardiovascular risk  
344 factors including blood pressure or endothelial function<sup>8,9</sup>. Importantly, the presence of OSA  
345 appears to be particularly detrimental in subjects without prior CV disease<sup>31</sup>. This ties in with



346 an extensive line of evidence showing that intermittent hypoxia, the hallmark feature of  
347 obstructive sleep apnea and key pathophysiological factor in CV disease processes in OSA, is  
348 a potent triggering factor of inflammatory processes which are also characteristic of early  
349 stages of atherosclerosis<sup>32,33</sup>. We and others have previously shown that OSA subjects  
350 without CV disease exhibit a low-grade systemic pro-inflammatory milieu which is  
351 attenuated by effective CPAP therapy<sup>11,34</sup>. The CPAP effect on aortic inflammation as  
352 evaluated by FDG PET-CT, on LD NCP coronary artery plaque burden and on endothelial  
353 function found in our present report support these findings and highlight the potential  
354 opportunity for early intervention to mitigate CV risk in OSA. Notably, compliance with  
355 CPAP was excellent in our cohort and adequate adherence commonly referred to as usage of  
356 4 or more hours per night has emerged as being critical to achieve CV benefit<sup>35</sup>. Our small  
357 numbers do not allow further insight into the dose-effect relationship between CPAP and CV  
358 processes, but this topic will remain a research priority.

359         Although adherence and tolerability with Liraglutide were also satisfactory and  
360 significant weight loss was achieved accompanied by improvement in triglyceride levels and  
361 blood pressure, this did not translate into improvement of early atherosclerotic disease in our  
362 study. The general health benefits of weight loss are unquestionable and have also been  
363 demonstrated in OSA populations<sup>36-38</sup>. However, most studies have focused on improvement  
364 in OSA parameters or metabolic outcomes. In a landmark study, Chirinos and co-workers  
365 reported improvement in various parameters with weight loss including insulin sensitivity  
366 and blood pressure in obese subjects with obesity and moderate to severe OSA in contrast to  
367 CPAP therapy. Of note, there appeared to be an incremental benefit with both treatments  
368 combined<sup>17</sup>. However, that study employed intensive weight loss coaching and dietary  
369 restriction that are not feasible in real world populations. GLP-1 in combination with lifestyle  
370 change is superior in achieving weight loss, compared to lifestyle change alone, and is now

371 widely used as an obesity treatment<sup>39</sup>. The SCALE sleep apnea trial evaluated this  
372 pharmacological intervention versus placebo over 32 weeks in moderate to severe OSA  
373 subjects who were unwilling or unable to use CPAP and reported a small but statistically  
374 significant improvement in AHI, systolic blood pressure and HbA1c<sup>40</sup>. Our study is the first  
375 to compare the impact of GLP-1 induced weight loss with CPAP therapy (alone or in  
376 combination) and also the first to address the potential impact on early CV disease processes.  
377 Weight loss achieved in the Liraglutide group was comparable to that seen in the SCALE  
378 sleep apnea trial but was less in the combination group. This was likely due to difficulties for  
379 some subjects in managing both treatments concomitantly, also reflected in the lower CPAP  
380 compliance in comparison to those on CPAP alone. We used a very pragmatic, easily  
381 applicable approach for standard clinical populations. We did not provide specific dietary or  
382 exercise advice to patients in the CPAP group reflecting our standard practice. However, as a  
383 consequence we cannot rule out a potential added benefit on CV disease with combined  
384 CPAP and Liraglutide. Furthermore, continuous weight loss beyond our 24-week timepoint  
385 might potentially relate into more noticeable improvements but this remains hypothetical at  
386 this stage. Nonetheless, our data support a direct contribution of OSA to the process of  
387 atherosclerosis and the significant correlations of oximetry parameters with our CV outcomes  
388 reinforces the pivotal role of intermittent hypoxia as triggering factor. The relationship  
389 between OSA and CV disease was particularly strong in subjects not on statin therapy. Statin  
390 medication is the cornerstone therapy to attenuate CV disease progression and their effects  
391 are not solely mediated by their lipid-lowering properties but also through pleiotropic effects  
392 reducing vascular inflammation and promoting atherosclerotic plaque stability<sup>41,42</sup>. Statin use  
393 among OSA patients has been consistently reported to be low<sup>43,44</sup> and studies assessing the  
394 benefits of statins in OSA populations have been conflicting. In a French multicenter double-  
395 blind RCT endothelial function remained unaffected although statins improved blood

396 pressure and lipid profile<sup>45</sup>. In contrast, a recent report demonstrated reduction of  
397 complement-mediated pro-inflammatory effects with restoration of endothelial protection<sup>46</sup>.  
398 Our study was not designed to assess this aspect but supports the need for further research  
399 into the role of statins in OSA-mediated CV disease either in combination with CPAP or as  
400 primary preventive strategy alone.

401 A particular strength of our study is the evaluation of early and potentially reversible  
402 atherosclerotic disease using state-of-the art imaging techniques. This is the first time that  
403 18F-FDG PET-CT has been used in an OSA population. Vascular inflammation on 18F-FDG  
404 PET-CT has been shown to predict the formation of future atherosclerotic plaques and  
405 moreover, to correlate with subsequent vascular events<sup>13,47</sup>. Importantly, the reduction in  
406 aortic inflammation by CPAP therapy in our study is at least of the magnitude seen with  
407 statin therapy<sup>48</sup> and thus, is likely of clinical relevance. In contrast to PET-CT assessment of  
408 atherosclerosis, CCTA is well established in routine clinical practice and increased calcified  
409 coronary artery plaque burden on CT calcium scoring is predictive of future coronary  
410 events<sup>49,50</sup>. We reported previously an increased plaque burden in otherwise healthy OSA  
411 subjects versus matched controls<sup>51</sup> and data from the Multi-Ethnic Study of Atherosclerosis  
412 (MESA) cohort demonstrated an independent association between OSA severity and  
413 progression of calcified coronary artery plaques over an 8-year period<sup>52</sup>. However, calcified  
414 plaques represent a more stable form of atherosclerosis less likely to rupture and cause  
415 myocardial infarction. Histologically, a lipid-rich necrotic core is an important characteristic  
416 associated with plaque rupture<sup>53</sup> and those can be accurately identified on CCTA as low-  
417 attenuation noncalcified plaque and accurately quantified through semi-automatic analysis.  
418 Accordingly, low-attenuation plaque has been demonstrated to be a better predictor of  
419 myocardial infarction than other traditionally used markers including coronary artery  
420 stenosis<sup>54</sup>. In a large cross-sectional study of 692 subjects, OSA severity correlated strongly

421 with CP and NCP burden and subjects with moderate to severe OSA were more likely to  
422 contain a LD NCP component than controls<sup>55</sup>. Unfortunately, we were not able to repeat  
423 CCTA's in all our subjects following their interventions due to the ethical restrictions  
424 regarding radiation exposure but nonetheless with our small numbers, there was a noticeable  
425 trend in reduction with CPAP in LD NCP volume only, supporting the potential importance  
426 of effective OSA treatment on the early pro-inflammatory phase of atherosclerosis.

427         These data have been derived from a proof-of concept study and thus, have inherent  
428 limitations including low numbers, an open-label design and a focus on a selected, well-  
429 characterized population. In addition, in line with other RCT's in the field, we excluded  
430 subjects with severe daytime sleepiness who may benefit most from CPAP.

431         Despite these limitations, our data provide sufficient evidence to mandate the design  
432 and delivery of larger-scale studies to define the role of CPAP in attenuating CV risk as  
433 primary prevention in subjects with OSA. There is also a clear need to integrate novel  
434 radiological surrogate markers of cardiovascular disease with clinical endpoints.

### 435 **Acknowledgement**

436         We are grateful to all the patients and their families for participating in this study and  
437 to all staff members of the Sleep Laboratory at St. Vincent's University Hospital for their  
438 help and support.

### 439 **Sources of Funding**

440         This study was funded by the Health Research Board of Ireland (SR). Further support  
441 was provided by an unrestricted grant from Novo Nordisk, Ireland but the company had no  
442 influence in the design, the running, and the analysis of the study. The not-for-profit  
443 Heartbeat Trust CLG ([www.heartbeattrust.ie](http://www.heartbeattrust.ie)) founded by KMcD and ML provided the Circle  
444 CVI software.

445 **Disclosures**

446 CO'D, SC, AO'M, BO'R, MT, RG, DO'S and DM have nothing to disclose. KMcD  
447 has received grants from Interreg North West Europe and has acted as speaker and consultant  
448 for Boehringer Ingelheim, Astra Zeneca, FIRE -1 and Vifor Pharmaceuticals. ML has board  
449 membership and shares in Solvotrin Therapeutics, is a named inventor on several patents  
450 relating to anti-inflammatory effects of isosorbide prodrugs and novel formulations of iron  
451 and in receipt of grant funding from Novartis, Genuity Science, the Irish Research Council  
452 and ESTHER Ireland. JDD has received grant support from the Irish Lung Foundation, the  
453 St. Vincent's Hospital Group Foundation, University College Dublin and the FP7 Program of  
454 the European Commission for the randomized multicenter DISCHARGE trial (603266-2,  
455 HEALTH-2012.2.4.-2); is an Associate Editor of Radiology and the Quarterly Journal of  
456 Medicine; is an Editorial Board member of Radiology Cardiothoracic Imaging; is an author  
457 in the Stat-Dx book Series Diagnostic Imaging – Cardiovascular and the textbook CT and  
458 MRI in Cardiology, Elsevier and has received speaker fees from Boehringer Ingelheim. SR  
459 received unrestricted grants from Novo Nordisk and Fitbit.

460 **Supplementary Material**

461 Supplemental Methods

462 Tables S1-S3

463 Figure S1-S2

## 464 **References**

465

- 466 1. Benjafield AV, Ayas NT, Eastwood PR, Heinzer R, Ip MSM, Morrell MJ, Nunez  
467 CM, Patel SR, Penzel T, Pépin J-L, et al. Estimation of the global prevalence and  
468 burden of obstructive sleep apnoea: a literature-based analysis. *The Lancet*  
469 *Respiratory Medicine*. 2019;7:687-698. doi: 10.1016/S2213-2600(19)30198-5
- 470 2. O'Donnell C, O'Mahony AM, McNicholas WT, Ryan S. Cardiovascular  
471 manifestations in obstructive sleep apnea: current evidence and potential mechanisms.  
472 *Pol Arch Intern Med*. 2021;131:550-560. doi: 10.20452/pamw.16041
- 473 3. Javaheri S, Barbe F, Campos-Rodriguez F, Dempsey JA, Khayat R, Javaheri S,  
474 Malhotra A, Martinez-Garcia MA, Mehra R, Pack AI, et al. Sleep Apnea: Types,  
475 Mechanisms, and Clinical Cardiovascular Consequences. *J Am Coll Cardiol*.  
476 2017;69:841-858. doi: 10.1016/j.jacc.2016.11.069
- 477 4. McEvoy RD, Antic NA, Heeley E, Luo Y, Ou Q, Zhang X, Mediano O, Chen R,  
478 Drager LF, Liu Z, et al. CPAP for Prevention of Cardiovascular Events in Obstructive  
479 Sleep Apnea. *N Engl J Med*. 2016;375:919-931. doi: 10.1056/NEJMoa1606599
- 480 5. Peker Y, Glantz H, Eulenburg C, Wegscheider K, Herlitz J, Thunstrom E. Effect of  
481 Positive Airway Pressure on Cardiovascular Outcomes in Coronary Artery Disease  
482 Patients with Nonsleepy Obstructive Sleep Apnea. The RICCADSA Randomized  
483 Controlled Trial. *Am J Respir Crit Care Med*. 2016;194:613-620. doi:  
484 10.1164/rccm.201601-0088OC
- 485 6. Sanchez-de-la-Torre M, Sanchez-de-la-Torre A, Bertran S, Abad J, Duran-Cantolla J,  
486 Cabriada V, Mediano O, Masdeu MJ, Alonso ML, Masa JF, et al. Effect of  
487 obstructive sleep apnoea and its treatment with continuous positive airway pressure  
488 on the prevalence of cardiovascular events in patients with acute coronary syndrome  
489 (ISAACC study): a randomised controlled trial. *Lancet Respir Med*. 2020;8:359-367.  
490 doi: 10.1016/S2213-2600(19)30271-1
- 491 7. Pengo MF, Soranna D, Giontella A, Perger E, Mattaliano P, Schwarz EI, Lombardi C,  
492 Bilo G, Zambon A, Steier J, et al. Obstructive sleep apnoea treatment and blood  
493 pressure: which phenotypes predict a response? A systematic review and meta-  
494 analysis. *Eur Respir J*. 2020;55. doi: 10.1183/13993003.01945-2019
- 495 8. Shang W, Zhang Y, Liu L, Chen F, Wang G, Han D. Benefits of continuous positive  
496 airway pressure on blood pressure in patients with hypertension and obstructive sleep  
497 apnea: a meta-analysis. *Hypertens Res*. 2022;45:1802-1813. doi: 10.1038/s41440-  
498 022-00954-9
- 499 9. Schwarz EI, Puhan MA, Schlatzer C, Stradling JR, Kohler M. Effect of CPAP therapy  
500 on endothelial function in obstructive sleep apnoea: A systematic review and meta-  
501 analysis. *Respirology (Carlton, Vic)*. 2015;20:889-895. doi: 10.1111/resp.12573
- 502 10. Chalegre ST, Lins-Filho OL, Lustosa TC, Franca MV, Couto TLG, Drager LF,  
503 Lorenzi-Filho G, Bittencourt MS, Pedrosa RP. Impact of CPAP on arterial stiffness in  
504 patients with obstructive sleep apnea: a meta-analysis of randomized trials. *Sleep*  
505 *Breath*. 2021;25:1195-1202. doi: 10.1007/s11325-020-02226-7
- 506 11. Ryan S, Taylor CT, McNicholas WT. Predictors of elevated nuclear factor-kappaB-  
507 dependent genes in obstructive sleep apnea syndrome. *American Journal of*  
508 *Respiratory and Critical Care Medicine*. 2006;174:824-830. doi:  
509 10.1164/rccm.200601-066OC
- 510 12. Ryan S, Taylor CT, McNicholas WT. Systemic inflammation: a key factor in the  
511 pathogenesis of cardiovascular complications in obstructive sleep apnoea syndrome?  
512 *Thorax*. 2009;64:631-636. doi: 10.1136/thx.2008.105577

- 513 13. Rominger A, Saam T, Wolpers S, Cyran CC, Schmidt M, Foerster S, Nikolaou K,  
514 Reiser MF, Bartenstein P, Hacker M. 18F-FDG PET/CT Identifies Patients at Risk for  
515 Future Vascular Events in an Otherwise Asymptomatic Cohort with Neoplastic  
516 Disease. *Journal of Nuclear Medicine*. 2009;50:1611-1620. doi:  
517 10.2967/jnumed.109.065151
- 518 14. Gulati M, Levy PD, Mukherjee D, Amsterdam E, Bhatt DL, Birtcher KK, Blankstein  
519 R, Boyd J, Bullock-Palmer RP, Conejo T, et al. 2021  
520 AHA/ACC/AASE/CHEST/SAEM/SCCT/SCMR Guideline for the Evaluation and  
521 Diagnosis of Chest Pain: A Report of the American College of Cardiology/American  
522 Heart Association Joint Committee on Clinical Practice Guidelines. *Circulation*.  
523 2021;144:e368-e454. doi: 10.1161/CIR.0000000000001029
- 524 15. Shaw LJ, Blankstein R, Bax JJ, Ferencik M, Bittencourt MS, Min JK, Berman DS,  
525 Leipsic J, Villines TC, Dey D, et al. Society of Cardiovascular Computed  
526 Tomography / North American Society of Cardiovascular Imaging - Expert  
527 Consensus Document on Coronary CT Imaging of Atherosclerotic Plaque. *J*  
528 *Cardiovasc Comput Tomogr*. 2021;15:93-109. doi: 10.1016/j.jcct.2020.11.002
- 529 16. Williams MC, Kwiecinski J, Doris M, McElhinney P, D'Souza MS, Cadet S,  
530 Adamson PD, Moss AJ, Alam S, Hunter A, et al. Low-Attenuation Noncalcified  
531 Plaque on Coronary Computed Tomography Angiography Predicts Myocardial  
532 Infarction: Results From the Multicenter SCOT-HEART Trial (Scottish Computed  
533 Tomography of the HEART). *Circulation*. 2020;141:1452-1462. doi:  
534 10.1161/CIRCULATIONAHA.119.044720
- 535 17. Chirinos JA, Gurubhagavatula I, Teff K, Rader DJ, Wadden TA, Townsend R, Foster  
536 GD, Maislin G, Saif H, Broderick P, et al. CPAP, weight loss, or both for obstructive  
537 sleep apnea. *N Engl J Med*. 2014;370:2265-2275. doi: 10.1056/NEJMoa1306187
- 538 18. The Food Pyramid. Department of Health.  
539 [https://www.hse.ie/eng/about/who/healthwellbeing/our-priority-](https://www.hse.ie/eng/about/who/healthwellbeing/our-priority-programmes/heal/heal-docs/food%20pyramid%20professional%20version.pdf)  
540 [programmes/heal/heal-docs/food%20pyramid%20professional%20version.pdf](https://www.hse.ie/eng/about/who/healthwellbeing/our-priority-programmes/heal/heal-docs/food%20pyramid%20professional%20version.pdf). 2016.
- 541 19. Keeping active. Healthy Ireland. [https://www.gov.ie/en/publication/16d3c-keeping-](https://www.gov.ie/en/publication/16d3c-keeping-active/)  
542 [active/](https://www.gov.ie/en/publication/16d3c-keeping-active/). 2021.
- 543 20. Berry RB, Quan SF, Abreu AR, Bibbs ML, DelRosso L, Harding SM, Mao M-M,  
544 Plante DD, Pressman MR, Troester MM, et al. *The AASM Manual for the Scoring of*  
545 *Sleep and Associated Events: Rules, Terminology and Technical Specifications*.  
546 Darien, IL: American Academy of Sleep Medicine; 2020.
- 547 21. Bonetti PO, Pumper GM, Higano ST, Holmes DR, Jr., Kuvin JT, Lerman A.  
548 Noninvasive identification of patients with early coronary atherosclerosis by  
549 assessment of digital reactive hyperemia. *J Am Coll Cardiol*. 2004;44:2137-2141. doi:  
550 10.1016/j.jacc.2004.08.062
- 551 22. Axtell AL, Gomari FA, Cooke JP. Assessing Endothelial Vasodilator Function with  
552 the Endo-PAT 2000. *J Vis Exp*. 2010:2167. doi: 10.3791/2167
- 553 23. Bucerius J, Hyafil F, Verberne HJ, Slart RH, Lindner O, Sciagra R, Agostini D,  
554 Ubleis C, Gimelli A, Hacker M, et al. Position paper of the Cardiovascular Committee  
555 of the European Association of Nuclear Medicine (EANM) on PET imaging of  
556 atherosclerosis. *Eur J Nucl Med Mol Imaging*. 2016;43:780-792. doi:  
557 10.1007/s00259-015-3259-3
- 558 24. Dey AK, Joshi AA, Chaturvedi A, Lerman JB, Aberra TM, Rodante JA, Teague HL,  
559 Harrington CL, Rivers JP, Chung JH, et al. Association Between Skin and Aortic  
560 Vascular Inflammation in Patients With Psoriasis: A Case-Cohort Study Using  
561 Positron Emission Tomography/Computed Tomography. *JAMA Cardiol*.  
562 2017;2:1013-1018. doi: 10.1001/jamacardio.2017.1213



- 563 25. Naik HB, Natarajan B, Stansky E, Ahlman MA, Teague H, Salahuddin T, Ng Q, Joshi  
564 AA, Krishnamoorthy P, Dave J, et al. Severity of Psoriasis Associates With Aortic  
565 Vascular Inflammation Detected by FDG PET/CT and Neutrophil Activation in a  
566 Prospective Observational Study. *Arterioscler Thromb Vasc Biol.* 2015;35:2667-  
567 2676. doi: 10.1161/ATVBAHA.115.306460
- 568 26. Agatston AS, Janowitz WR, Hildner FJ, Zusmer NR, Viamonte M, Jr., Detrano R.  
569 Quantification of coronary artery calcium using ultrafast computed tomography. *J Am*  
570 *Coll Cardiol.* 1990;15:827-832. doi: 10.1016/0735-1097(90)90282-t
- 571 27. Dey D, Schepis T, Marwan M, Slomka PJ, Berman DS, Achenbach S. Automated  
572 three-dimensional quantification of noncalcified coronary plaque from coronary CT  
573 angiography: comparison with intravascular US. *Radiology.* 2010;257:516-522. doi:  
574 10.1148/radiol.10100681
- 575 28. de Batlle J, Bertran S, Turino C, Escarrabill J, Dalmases M, Garcia-Altes A, Sapina-  
576 Beltran E, Carbonell EM, Sanchez-de-la-Torre M, Barbe F. Longitudinal Analysis of  
577 Causes of Mortality in Continuous Positive Airway Pressure-treated Patients at the  
578 Population Level. *Ann Am Thorac Soc.* 2021;18:1390-1396. doi:  
579 10.1513/AnnalsATS.202007-888OC
- 580 29. Nakamura K, Nakamura H, Tohyama K, Takara C, Iseki C, Woodward M, Iseki K.  
581 Survival benefit of continuous positive airway pressure in Japanese patients with  
582 obstructive sleep apnea: a propensity-score matching analysis. *J Clin Sleep Med.*  
583 2021;17:211-218. doi: 10.5664/jcsm.8842
- 584 30. Pepin JL, Bailly S, Rinder P, Adler D, Benjafield AV, Lavergne F, Josseran A, Sinel-  
585 Boucher P, Tamisier R, Cistulli PA, et al. Relationship Between CPAP Termination  
586 and All-Cause Mortality: A French Nationwide Database Analysis. *Chest.*  
587 2022;161:1657-1665. doi: 10.1016/j.chest.2022.02.013
- 588 31. Zapater A, Sanchez-de-la-Torre M, Benitez ID, Targa A, Bertran S, Torres G,  
589 Aldoma A, De Batlle J, Abad J, Duran-Cantolla J, et al. The Effect of Sleep Apnea on  
590 Cardiovascular Events in Different Acute Coronary Syndrome Phenotypes. *Am J*  
591 *Respir Crit Care Med.* 2020;202:1698-1706. doi: 10.1164/rccm.202004-1127OC
- 592 32. Ryan S, Cummins EP, Farre R, Gileles-Hillel A, Jun JC, Oster H, Pepin JL, Ray DW,  
593 Reutrakul S, Sanchez-de-la-Torre M, et al. Understanding the pathophysiological  
594 mechanisms of cardiometabolic complications in obstructive sleep apnoea: towards  
595 personalised treatment approaches. *Eur Respir J.* 2020;56. doi:  
596 10.1183/13993003.02295-2019
- 597 33. Ryan S, Taylor CT, McNicholas WT. Selective activation of inflammatory pathways  
598 by intermittent hypoxia in obstructive sleep apnea syndrome. *Circulation.*  
599 2005;112:2660-2667. doi: 10.1161/CIRCULATIONAHA.105.556746
- 600 34. Ryan S, McNicholas WT. Inflammatory cardiovascular risk markers in obstructive  
601 sleep apnoea syndrome. *Cardiovascular & Hematological Agents in Medicinal*  
602 *Chemistry.* 2009;7:76-81. doi: 10.2174/187152509787047685
- 603 35. Pack AI, Magalang UJ, Singh B, Kuna ST, Keenan BT, Maislin G. Randomized  
604 clinical trials of cardiovascular disease in obstructive sleep apnea: understanding and  
605 overcoming bias. *Sleep.* 2021;44. doi: 10.1093/sleep/zsaa229
- 606 36. Carneiro-Barrera A, Amaro-Gahete FJ, Guillen-Riquelme A, Jurado-Fasoli L, Saez-  
607 Roca G, Martin-Carrasco C, Buella-Casal G, Ruiz JR. Effect of an Interdisciplinary  
608 Weight Loss and Lifestyle Intervention on Obstructive Sleep Apnea Severity: The  
609 INTERAPNEA Randomized Clinical Trial. *JAMA Netw Open.* 2022;5:e228212. doi:  
610 10.1001/jamanetworkopen.2022.8212
- 611 37. Edwards BA, Bristow C, O'Driscoll DM, Wong AM, Ghazi L, Davidson ZE, Young  
612 A, Truby H, Haines TP, Hamilton GS. Assessing the impact of diet, exercise and the



- 613 combination of the two as a treatment for OSA: A systematic review and meta-  
614 analysis. *Respirology (Carlton, Vic)*. 2019;24:740-751. doi: 10.1111/resp.13580
- 615 38. Georgoulis M, Yiannakouris N, Kechribari I, Lamprou K, Perraki E, Vagiakis E,  
616 Kontogianni MD. Sustained improvements in the cardiometabolic profile of patients  
617 with obstructive sleep apnea after a weight-loss Mediterranean diet/lifestyle  
618 intervention: 12-month follow-up (6 months post-intervention) of the "MIMOSA"  
619 randomized clinical trial. *Nutr Metab Cardiovasc Dis*. 2023. doi:  
620 10.1016/j.numecd.2023.02.010
- 621 39. Pi-Sunyer X, Astrup A, Fujioka K, Greenway F, Halpern A, Krempf M, Lau DC, le  
622 Roux CW, Violante Ortiz R, Jensen CB, et al. A Randomized, Controlled Trial of 3.0  
623 mg of Liraglutide in Weight Management. *N Engl J Med*. 2015;373:11-22. doi:  
624 10.1056/NEJMoa1411892
- 625 40. Blackman A, Foster GD, Zammit G, Rosenberg R, Aronne L, Wadden T, Claudius B,  
626 Jensen CB, Mignot E. Effect of liraglutide 3.0 mg in individuals with obesity and  
627 moderate or severe obstructive sleep apnea: the SCALE Sleep Apnea randomized  
628 clinical trial. *Int J Obes (Lond)*. 2016;40:1310-1319. doi: 10.1038/ijo.2016.52
- 629 41. Arnett DK, Blumenthal RS, Albert MA, Buroker AB, Goldberger ZD, Hahn EJ,  
630 Himmelfarb CD, Khera A, Lloyd-Jones D, McEvoy JW, et al. 2019 ACC/AHA  
631 Guideline on the Primary Prevention of Cardiovascular Disease: A Report of the  
632 American College of Cardiology/American Heart Association Task Force on Clinical  
633 Practice Guidelines. *Circulation*. 2019;140:e596-e646. doi:  
634 10.1161/CIR.0000000000000678
- 635 42. Razavi AC, Mehta A, Sperling LS. Statin therapy for the primary prevention of  
636 cardiovascular disease: Pros. *Atherosclerosis*. 2022;356:41-45. doi:  
637 10.1016/j.atherosclerosis.2022.07.004
- 638 43. Gottlieb DJ, Yenokyan G, Newman AB, O'Connor GT, Punjabi NM, Quan SF,  
639 Redline S, Resnick HE, Tong EK, Diener-West M, et al. Prospective study of  
640 obstructive sleep apnea and incident coronary heart disease and heart failure: the sleep  
641 heart health study. *Circulation*. 2010;122:352-360. doi:  
642 10.1161/CIRCULATIONAHA.109.901801
- 643 44. Souza SP, Santos RB, Santos IS, Parise BK, Giatti S, Aiello AN, Cunha LF, Silva  
644 WA, Bortolotto LA, Lorenzi-Filho G, et al. Obstructive Sleep Apnea, Sleep Duration,  
645 and Associated Mediators With Carotid Intima-Media Thickness: The ELSA-Brasil  
646 Study. *Arterioscler Thromb Vasc Biol*. 2021;41:1549-1557. doi:  
647 10.1161/ATVBAHA.120.315644
- 648 45. Joyeux-Faure M, Tamisier R, Baguet JP, Dias-Domingos S, Perrig S, Leftheriotis G,  
649 Janssens JP, Trzepizur W, Launois SH, Stanke-Labesque F, et al. Response to statin  
650 therapy in obstructive sleep apnea syndrome: a multicenter randomized controlled  
651 trial. *Mediators Inflamm*. 2014;2014:423120. doi: 10.1155/2014/423120
- 652 46. Shah R, Patel N, Emin M, Celik Y, Jimenez A, Gao S, Garfinkel J, Wei Y, Jelic S.  
653 Statins Restore Endothelial Protection against Complement Activity in Obstructive  
654 Sleep Apnea: A Randomized Trial. *Ann Am Thorac Soc*. 2023. doi:  
655 10.1513/AnnalsATS.202209-761OC
- 656 47. Abdelbaky A, Corsini E, Figueroa AL, Fontanez S, Subramanian S, Ferencik M,  
657 Brady TJ, Hoffmann U, Tawakol A. Focal arterial inflammation precedes subsequent  
658 calcification in the same location: a longitudinal FDG-PET/CT study. *Circ*  
659 *Cardiovasc Imaging*. 2013;6:747-754. doi: 10.1161/CIRCIMAGING.113.000382
- 660 48. Tawakol A, Fayad ZA, Mogg R, Alon A, Klimas MT, Dansky H, Subramanian SS,  
661 Abdelbaky A, Rudd JHF, Farkouh ME, et al. Intensification of Statin Therapy Results  
662 in a Rapid Reduction in Atherosclerotic Inflammation: Results of a Multicenter

- 663 Fluorodeoxyglucose-Positron Emission Tomography/Computed Tomography  
664 Feasibility Study. *J Am Coll Cardiol*. 2013;62:909-917. doi:  
665 10.1016/j.jacc.2013.04.066
- 666 49. Choi EK, Choi SI, Rivera JJ, Nasir K, Chang SA, Chun EJ, Kim HK, Choi DJ,  
667 Blumenthal RS, Chang HJ. Coronary computed tomography angiography as a  
668 screening tool for the detection of occult coronary artery disease in asymptomatic  
669 individuals. *J Am Coll Cardiol*. 2008;52:357-365. doi: 10.1016/j.jacc.2008.02.086
- 670 50. O'Rourke RA, Brundage BH, Froelicher VF, Greenland P, Grundy SM,  
671 Hachamovitch R, Pohost GM, Shaw LJ, Weintraub WS, Winters WL, Jr., et al.  
672 American College of Cardiology/American Heart Association Expert Consensus  
673 document on electron-beam computed tomography for the diagnosis and prognosis of  
674 coronary artery disease. *Circulation*. 2000;102:126-140. doi:  
675 10.1161/01.cir.102.1.126
- 676 51. Kent BD, Garvey JF, Ryan S, Nolan G, Dodd JD, McNicholas WT. Severity of  
677 obstructive sleep apnoea predicts coronary artery plaque burden: a coronary computed  
678 tomographic angiography study. *Eur Respir J*. 2013;42:1263-1270. doi:  
679 10.1183/09031936.00094812
- 680 52. Kwon Y, Duprez DA, Jacobs DR, Nagayoshi M, McClelland RL, Shahar E, Budoff  
681 M, Redline S, Shea S, Carr JJ, et al. Obstructive sleep apnea and progression of  
682 coronary artery calcium: the multi-ethnic study of atherosclerosis study. *J Am Heart*  
683 *Assoc*. 2014;3:e001241. doi: 10.1161/JAHA.114.001241
- 684 53. Voros S, Rinehart S, Qian Z, Joshi P, Vazquez G, Fischer C, Belur P, Hulten E,  
685 Villines TC. Coronary atherosclerosis imaging by coronary CT angiography: current  
686 status, correlation with intravascular interrogation and meta-analysis. *JACC*  
687 *Cardiovasc Imaging*. 2011;4:537-548. doi: 10.1016/j.jcmg.2011.03.006
- 688 54. Williams MC, Kwiecinski J, Doris M, McElhinney P, D'Souza MS, Cadet S,  
689 Adamson PD, Moss AJ, Alam S, Hunter A, et al. Low-Attenuation Noncalcified  
690 Plaque on Coronary Computed Tomography Angiography Predicts Myocardial  
691 Infarction. *Circulation*. 2020;141:1452-1462. doi:  
692 10.1161/CIRCULATIONAHA.119.044720
- 693 55. Lu M, Fang F, Wang Z, Xu L, Sanderson JE, Zhan X, He L, Wu C, Wei Y.  
694 Association Between OSA and Quantitative Atherosclerotic Plaque Burden: A  
695 Coronary CT Angiography Study. *Chest*. 2021;160:1864-1874. doi:  
696 10.1016/j.chest.2021.07.040
- 697 56. Matsumoto H, Watanabe S, Kyo E, Tsuji T, Ando Y, Otaki Y, Cadet S, Gransar H,  
698 Berman DS, Slomka P, et al. Standardized volumetric plaque quantification and  
699 characterization from coronary CT angiography: a head-to-head comparison with  
700 invasive intravascular ultrasound. *Eur Radiol*. 2019;29:6129-6139. doi:  
701 10.1007/s00330-019-06219-3  
702  
703

	Total	Liraglutide n=10	CPAP n=10	Combination n=10	p-value
Female	6 (20)	2 (20)	1 (10)	3 (30)	0.535
Age (years)	50±7	50±9	51±8	50±5	0.959
BMI (kg/m <sup>2</sup> )	35.0±3.1	35.0±3.1	36.0±3.2	34.0±3.3	0.527
Epworth Sleepiness Scale	9±5	8±6	7±4	11±5	0.245
AHI	50±19	53±20	50±21	47±16	0.816
Hypertension	7 (23)	3 (30)	3 (30)	1 (10)	0.475
Ischemic Heart Disease	2 (7)	0 (0)	0 (0)	2 (20)	0.137
Statin Use	9 (30)	3 (30)	2 (20)	4 (40)	0.621
Anti-Hypertensive Medication Use	10 (33)	3 (30)	3 (30)	4 (40)	0.861
Smoking Status:					
• Current smoker	3 (10)	0 (0)	2 (20)	1 (10)	0.329
• Ex-smoker	16 (53)	4 (40)	6 (60)	6 (60)	0.585
• Never-smoker	11 (37)	6 (60)	2 (20)	3 (30)	0.155
Smoking Pack Years	22±10	20±14	21±9	24±10	0.812
24-hr mean systolic BP (mmHg)	121±12	126±13	119±10	120±12	0.359

24-hr mean diastolic BP (mmHg)	74±8	76±9	72±6	75±8	0.425
Non-dippers	20 (67)	7 (70)	8 (80)	5 (50)	0.350
HbA1c (mmol/mol)	38.4±3.2	38.4±3.9	37.8±2.6	39.0±3.1	0.784
Total Cholesterol (mmol/l)	4.80±0.99	5.35±1.17	4.68±0.66	4.36±0.90	0.071
Triglyceride (mmol/l)	1.88±0.90	2.09±0.76	1.84±1.00	1.72±0.97	0.66
HDL Cholesterol (mmol/l)	1.09±0.23	1.13±0.21	1.02±0.28	1.13±0.21	0.458
LDL Cholesterol (mmol/l)	2.85±0.82	3.28±0.89	2.83±0.48	2.45±0.86	0.07
T.Chol/HDL Ratio	4.53±1.08	4.81±1.00	4.84±1.10	3.95±0.99	0.111

704 **Table 1: Baseline Characteristics of the study population (n = 30).** (CPAP = continuous  
705 positive airway pressure, BMI = body mass index; BP = blood pressure, AHI = apnea-  
706 hypopnea index, HDL = high-density lipoproteins, LDL = low-density lipoproteins, HbA1c  
707 =glycosylated hemoglobin. Data are expressed as mean ± SD or n (%))

708  
709

710

	<b>Liraglutide</b>	<b>CPAP</b>	<b>Combination</b>
Change in Weight (kg)	<b>-6.17±3.57*</b>	2.30±4.57	<b>-3.67±4.22*</b>
Change in Waist Circumference (cm)	-4.25±6.11	0.75±6.45	<b>-6.25±2.75</b>
Change in CRP (mmol/l)	-0.89±2.05	-1.63±2.50	-0.02±1.64
Change in Total Cholesterol (mmol/l)	<b>-0.23±0.45</b>	-0.29±0.50	-0.28±0.45
Change in Triglycerides (mmol/l)	<b>-0.49±0.49</b>	-0.11±0.86	-0.09±0.81
Change in HDL Cholesterol (mmol/l)	0.08±0.11	0.00±0.14	0.08±0.14
Change in LDL Cholesterol (mmol/l)	-0.09±0.41	-0.25±0.70	-0.15±0.46
Change in Total Chol/HDL Ratio (mmol/l)	<b>-0.43±0.34</b>	-0.25±0.70	<b>-0.48±0.49</b>
Change in Systolic Blood Pressure (mmHg)	<b>-5.51±6.32</b>	0.88±5.91	-2.33±11.66
Change in Diastolic BP (mmHg)	-2.10±3.81	-0.50±4.75	-1.89±8.33
Change in MAP (mmHg)	-3.2±4.3	-0.04±4.4	-2.01±4.3
Change in Systolic Dip (%)	0±7	-4±7	-7.00±12
Change in Diastolic Nocturnal Dip (%)	-2±9	<b>-11±10</b>	<b>-15±11</b>

711 **Table 2: Changes from baseline to 24 weeks intervention.** (CPAP = continuous positive  
712 airway pressure, CRP = C-reactive protein, HDL = high-density lipoproteins, LDL = low-  
713 density lipoproteins, MAP = mean arterial pressure. Data are expressed as mean ± SD. **Bold**  
714 indicates significant within-group changes, \* $p < 0.05$  vs CPAP alone)

715

716

		<b>Liraglutide</b>	<b>CPAP</b>	<b>Combination</b>
AHI	Pre	54±21	48±20	48±17
	Post	42±16	<b>3±3*</b>	<b>5±5*</b>
ODI	Pre	45±22	40±17	43±17
	Post	32±19	<b>6±11*</b>	<b>5±5*</b>
TST90	Pre	14±12	17±17	11±11
	Post	<b>7±11</b>	<b>0±1</b>	<b>1±2</b>
Minimum SpO <sub>2</sub>	Pre	77±10	77±6	78±7
	Post	81±8	<b>87±4</b>	<b>88±4</b>
Baseline SpO <sub>2</sub>	Pre	94±1	93±2	93±1
	Post	94±1	<b>94±2*</b>	94±1

717 **Table 3: Baseline and end-of-study obstructive sleep apnea parameters.** (CPAP =  
718 *continuous positive airway pressure, AHI = apnea/hypopnea index, ODI = oxygen*  
719 *desaturation index, TST90 = oxygen saturation time spent below 90% of total sleep time,*  
720 *SpO<sub>2</sub> = oxygen saturation; Bold indicates p < 0.05 for within group changes, \*p < 0.05 vs*  
721 *Liraglutide)*  
722  
723

724 **Figure Legends**

725

726 **Figure 1:** Representative coronal oblique FDG PET maximum intensity projection (MIP)

727 images with mild, diffuse aortic wall uptake in the ascending thoracic aorta (arrows) on the

728 baseline PET (A), which qualitatively resolved on the end of study PET with CPAP alone

729 (B). Aortic wall target-to-background ratio (TBR) was 1.74 on the baseline PET and 1.13 on

730 the end of study scan.

731 **Figure 2:** Change in vascular inflammation as measured by aortic wall target-to-background

732 ratio (TBR) in the three treatment groups in A) the whole cohort (n = 30) and B) the cohort

733 with those using statin medication excluded (n = 21). Data represent mean±SD.

734 **Figure 3:** Change in CT coronary artery plaque volumes from baseline to 24-week of

735 intervention. A) total plaque, B) calcified plaque (CP), C) non-calcified plaque (NCP) and

736 D) low-attenuation plaque (LD NCP)

737 **Figure 4:** Representative quantitative coronary plaque analysis in a subject assigned to CPAP

738 therapy alone. Images of the left anterior descending coronary artery showed a mixture of

739 non-calcified (yellow color overlay) and low density (red color overlay) plaque subtypes

740 throughout the vessel at baseline imaging (A) (total volume 625mm<sup>3</sup>) and a reduction in both

741 subtypes of 236mm<sup>3</sup> at 24-week repeat coronary computed tomographic angiography

742 (CCTA) (B).

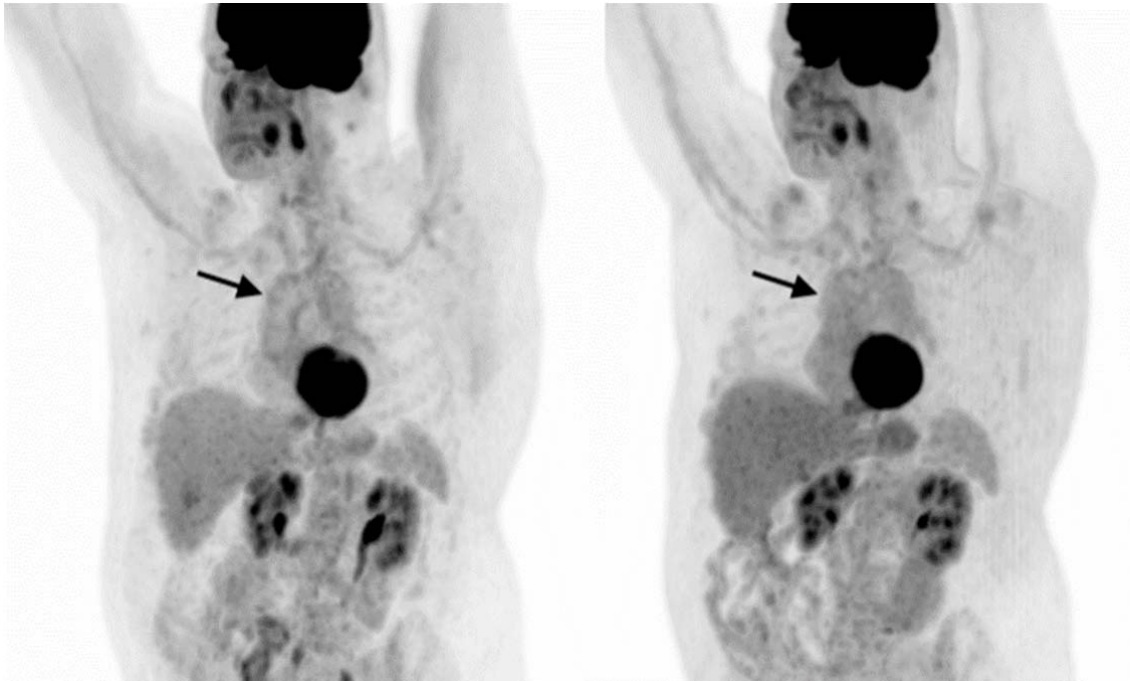
743 **Figure 5:** Correlations between change in CCTA plaque measurements and A) change in

744 TST90, B) change in vascular inflammation as measured by aortic wall TBR, C) change in

745 endothelial function as measured by RHI

746

747  
748

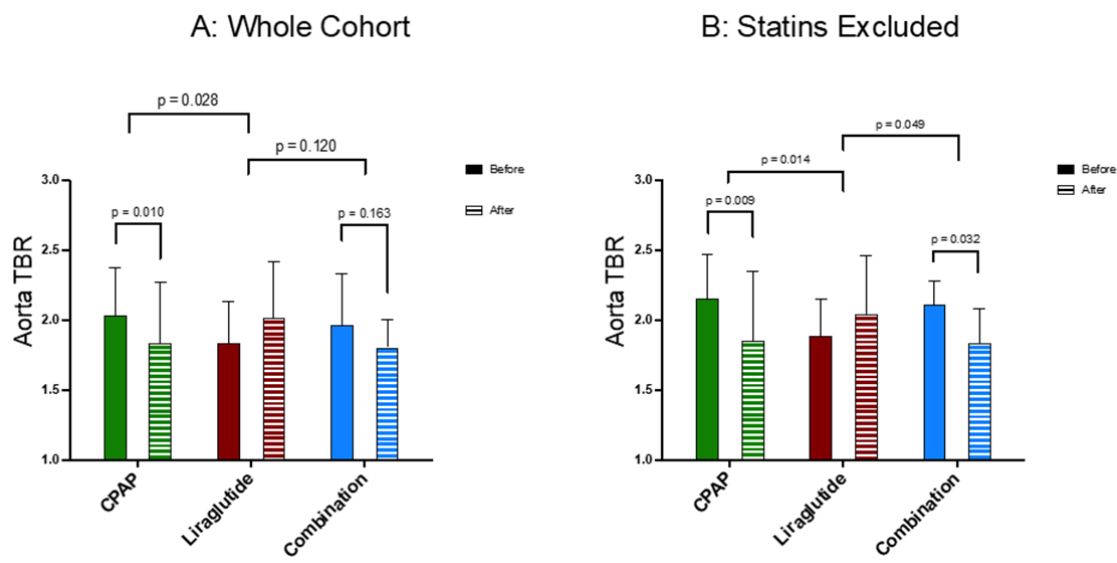


749  
750  
751

**Figure 1**



752

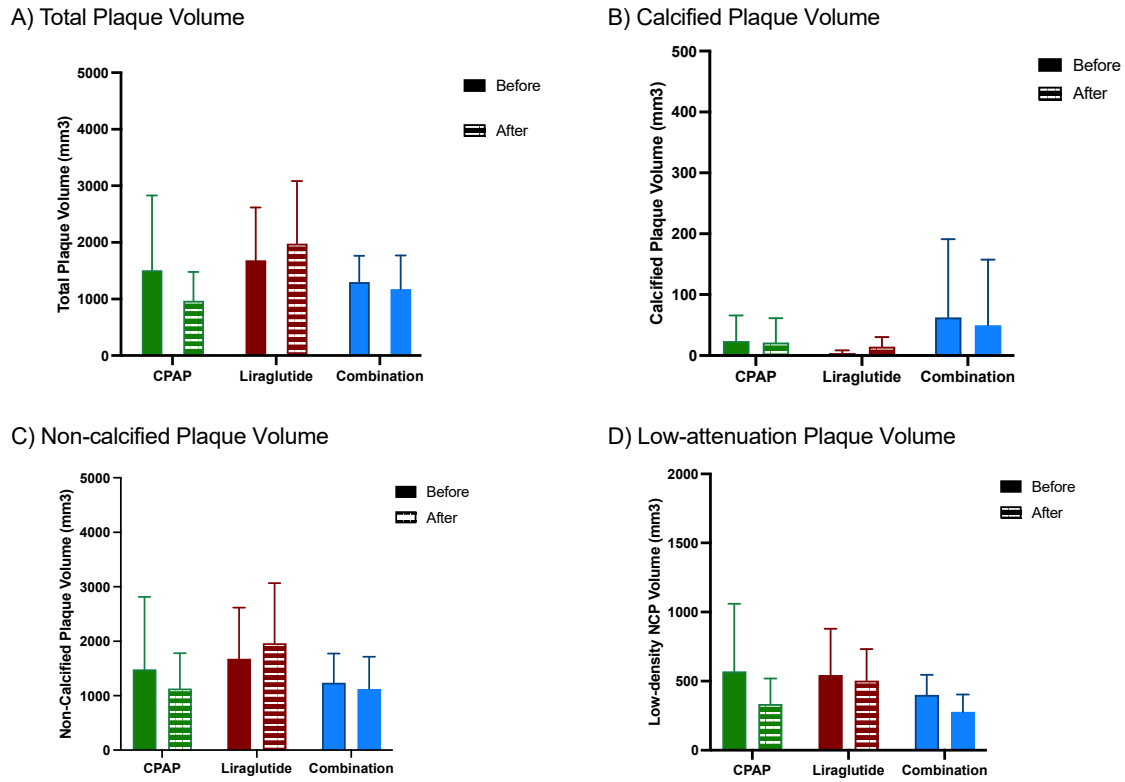


753  
754

755 **Figure 2**

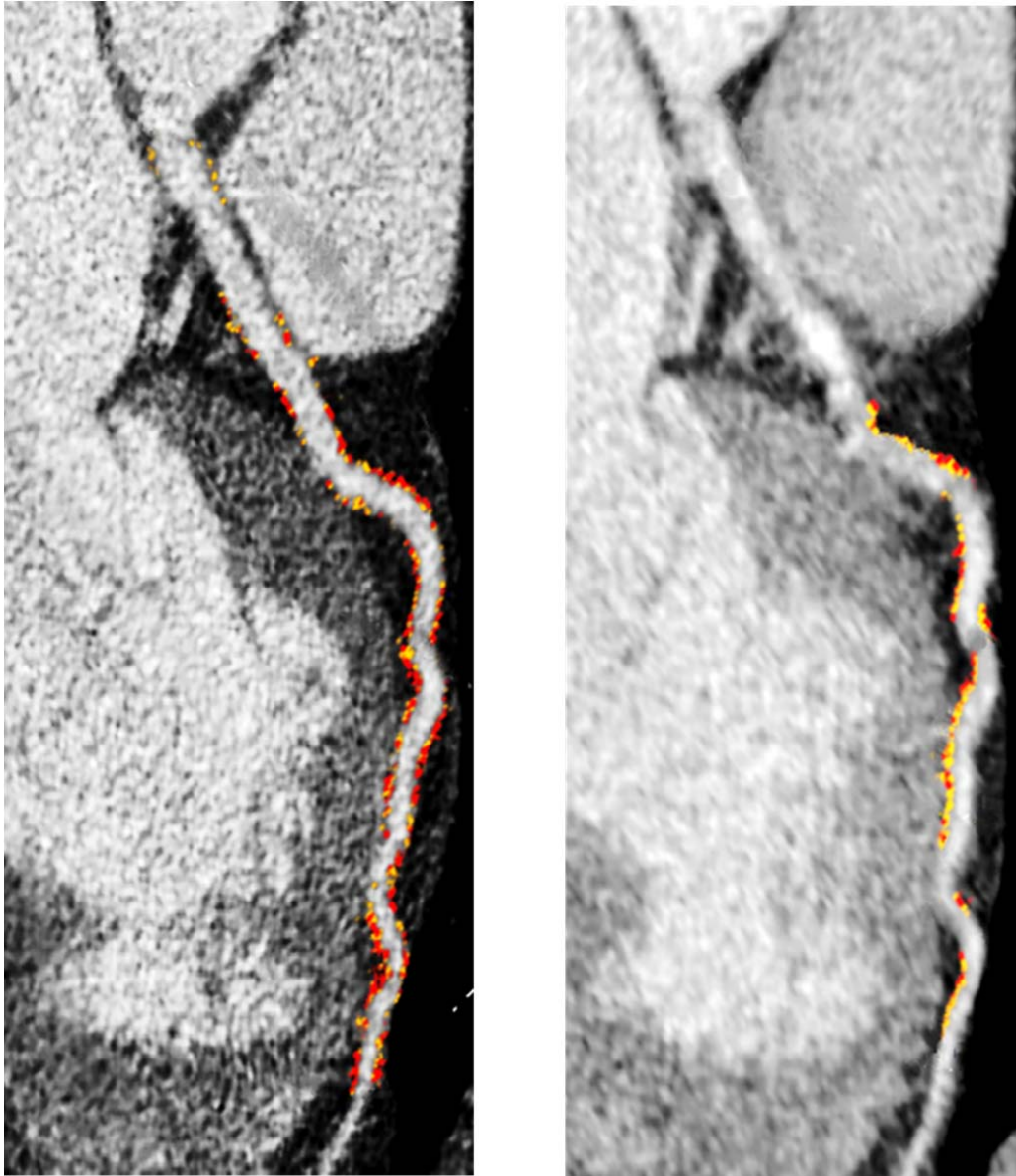
756  
757

758



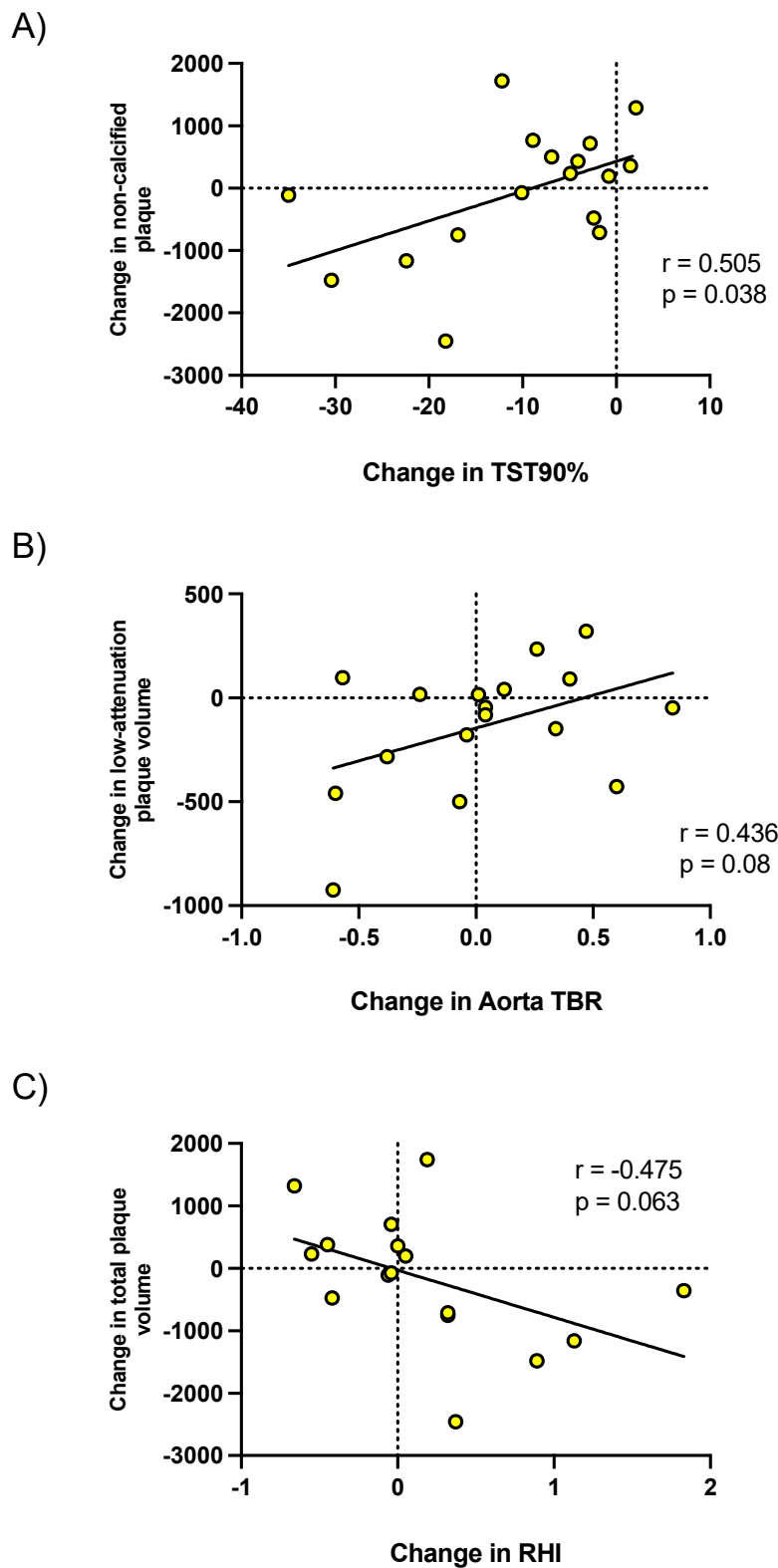
759  
760

**Figure 3**



761  
762 **Figure 4**

763  
764  
765  
766



767  
768 **Figure 5**  
769