

1 **Article summary line:** Descriptive and molecular epidemiology of leishmaniasis over a one-  
2 year period in the United States

3 **Running title:** Molecular detection of leishmaniasis in the United States

4 **Keywords:** leishmaniasis; Leishmania; leishmaniasis, cutaneous; leishmaniasis, mucocutaneous;  
5 leishmaniasis, visceral; polymerase chain reaction; epidemiology

6  
7 **Title:** Windows into leishmaniasis epidemiology in the United States: September 2021 through  
8 August 2022

9  
10 **Authors:** Thao T. Truong, Karissa Crawford, Ichih Wang-McGuire, Kendal Jensen, Aisha  
11 Mushtaq, Nicole A.P. Lieberman, Frederick S. Buckner, Wesley C. Van Voorhis, Brad T.  
12 Cookson, Stephen J. Salipante, and Joshua A. Lieberman<sup>#</sup>

13  
14 **Affiliations:** University of Washington, Seattle, Washington, USA (T. Truong, K. Crawford, I.  
15 Wang-McGuire, K. Jensen, A. Mushtaq, N. Lieberman, F. Buckner, W. Van Voorhis, B.  
16 Cookson, S. Salipante, J. Lieberman)

17  
18 **#Corresponding Author:** Joshua A. Lieberman, [joshuaal@uw.edu](mailto:joshuaal@uw.edu), Department of Laboratory  
19 Medicine and Pathology, Box 357110, 1959 NE Pacific St, Seattle, WA 98195-7110

20  
21 **ORCID:** JAL 0000-0002-0376-1337; SJS 0000-0001-8355-6992; TTT 0000-0002-5856-324X,  
22 NAPL 0000-0001-9334-8150; WCVV 0000-0001-6141-2015

23  
24

## 25 **Abstract**

26           Leishmaniasis is a rare disease in the United States, with an estimated annual incidence  
27 of dozens of cases occurring primarily in travelers, migrants, and military personnel. True  
28 disease incidence is unknown, since leishmaniasis is not a nationally notifiable condition. Here,  
29 we describe the results of molecular leishmaniasis over a 1-year interval (September 2021 to  
30 August 2022) when our laboratory served as the primary national reference laboratory for  
31 molecular diagnosis of civilian leishmaniasis. We tested 218 specimens submitted from 36 states  
32 yielding 94/186 (50.5%) positive cases with species or species complex-level identification and  
33 18 novel mini-exon alleles. Most species belonged to subgenus *Viannia* (75.6%) and associated  
34 with cutaneous or mucocutaneous disease. Cases were associated with recent travel (18.1%),  
35 travel timing unspecified (7.4%), migration (7.4%), remote travel (2.1%), military (1.1%), or  
36 unknown history (63.8%). These data illustrate the clinical utility of molecular testing for  
37 leishmaniasis and provide unique insight into disease epidemiology.

## 39 **Introduction**

40           *Leishmania* parasites are transmitted to humans by bites from infected phlebotomine  
41 sandflies. Over 20 *Leishmania* species are described and cause a wide spectrum of clinical  
42 disease in humans. Although leishmaniasis is considered a neglected tropical disease, it is  
43 endemic to 98 countries and its worldwide distribution is impacted by human conflict, travel,  
44 immigration, and displacement (1). *Leishmania* species endemic to the Eastern hemisphere have  
45 been geographically categorized as “Old World” *Leishmania* (OWL) whereas those endemic to  
46 the Western hemisphere have been termed “New World” *Leishmania* (NWL) (2). Most human  
47 infection is caused by species from one of two subgenera. The New World subgenus *Viannia*

48 includes *L. braziliensis* spp. complex and *L. guyanensis* spp. complex, which cause cutaneous  
49 and/or mucocutaneous lesions. Subgenus *Leishmania* includes Old World *L. major*, Old World  
50 *L. tropica* spp. complex, and New World *L. mexicana* spp. complex, which all cause cutaneous  
51 leishmaniasis (CL). The *Leishmania* subgenus additionally includes *L. donovani* (OWL) and *L.*  
52 *infantum* (OWL)/*L. chagasi* (NWL), which are associated with organotropic visceral  
53 leishmaniasis (VL), the most fatal clinical manifestation.

54 Diagnostic testing methods include histopathology to visualize intracellular amastigote  
55 stage parasites, *in vitro* culturing from lesions, serology, and molecular detection of parasite  
56 DNA (3). However, molecular methods are considered most sensitive, and are often most rapid  
57 (2–5). The University of Washington (UW) reference laboratory developed and validated a  
58 polymerase chain reaction (PCR) and Sanger sequencing assay to detect and identify *Leishmania*  
59 from tissue and body fluid specimens. The approach interrogates the organism’s multicopy mini-  
60 exon gene using primers targeting regions conserved across *Leishmania* species (6). The  
61 amplified region is sufficiently diverse to allow taxonomic determination of species or species  
62 complex (6,7). Along with patient immune status, type and severity of clinical disease, and travel  
63 history, knowledge of the infecting *Leishmania* species helps determine the risk for  
64 mucocutaneous leishmaniasis (MCL), which can impact treatment and management (3).

65 *Leishmania* has been considered endemic to the United States since 2015, after several  
66 reports of autochthonous CL (8–10). Previous studies of *Leishmania* infection epidemiology in  
67 the U.S. have been limited in scope and often lack species-level identification, comprising  
68 surveillance of armed forces members, case reports, and multicenter observational studies (11–  
69 13). During September 2021 – July 2022, culture, serology, and molecular testing and  
70 identification of *Leishmania* species was temporarily discontinued at the U.S. Centers for

71 Disease Control and Prevention (CDC) as part of an agency-wide pause on clinical testing (14),  
72 leaving the UW diagnostic reference laboratory the only service providing molecular *Leishmania*  
73 testing to the general U.S. population during this period (3). This situation offers a unique and  
74 relatively unbiased opportunity to examine molecular testing results for patients with suspected  
75 leishmaniasis within the United States. Here, we present the largest survey of *Leishmania* testing  
76 in the U.S. performed to date, encompassing 94 positive patient cases with species-level  
77 identification from testing specimens from 186 patients submitted over a 1-year period. Our  
78 work lends significant insights into descriptive and molecular epidemiology of leishmaniasis in  
79 the U.S.

80

## 81 **Materials and Methods**

### 82 *Assay Validation*

83 We validated a PCR and Sanger sequencing assay targeting the *Leishmania* mini-exon  
84 gene (6) under the CLIA '88 regulatory framework and guidelines established by the Clinical  
85 Laboratory Standards Institute. Assay performance was assessed using 7 cultured isolates (axenic  
86 promastigote culture) and genomic DNA purchased from the American Type Culture Collection  
87 (ATCC 50129); 13 residual clinical specimens positive for *Leishmania* spp. by broad-range  
88 fungal PCR performed in our laboratory and/or by culture and molecular analysis at the CDC  
89 Parasitic Disease Branch; and 22 residual clinical specimens negative for *Leishmania* spp. but  
90 positive for other pathogens (Table S1). DNA extraction, sequence analysis, and case review  
91 were performed as previously described (15,16). Specimens were tested in technical duplicate  
92 with positive, negative, and inhibition control reactions. Assay performance was fully  
93 reproducible across 3 operators.

94 *Patient Population*

95           The study cohort included all patients with leishmania testing performed at the UW  
96 Molecular Microbiology clinical diagnostic laboratory between the assay's initial offering on  
97 9/1/2021 and 8/31/2022. The CDC referred leishmaniasis testing to the University of  
98 Washington from 10/2021 to 7/2022. Acceptable specimen types included fresh and formalin-  
99 fixed paraffin-embedded (FFPE) tissue, body fluids, buffy coat preparations, and (with  
100 laboratory director approval) stain-positive peripheral blood.

101 *Demographic and Clinical Information*

102           Demographic data including sex, age, state from which specimen was submitted, dates of  
103 collection/submission, and specimen description/anatomic site were obtained from the laboratory  
104 information system. When available, clinical history, histopathology findings, and travel history  
105 were obtained from medical records including physician clinicopathologic consultations.

106 *Ethical Approval*

107           The study was approved by the UW IRB (STUDY00013877).

108 *Data Analysis*

109           Data were analyzed in R (version 4.2.1) (17). Maps and figures were generated using  
110 usmap, tidyverse, cowplot, and ggtree packages (18–21). “Cases” were defined as unique  
111 patients, regardless of the number of specimens tested. Chi-square tests were used to compare  
112 categorical variables using GraphPad QuickCalcs (22).

113           Assembled mini-exon sequences were MAFFT aligned in Unipro Ugene v44.0 (23) with  
114 published reference sequences representing human-infecting species complexes and curated  
115 manually to consolidate mini-exon alleles exhibiting minor length variation. Trees were

116 generated by IQ-Tree with automatic substitution model optimization (24) and visualized with  
117 ggtree (25).

#### 118 *Data availability*

119 Sequences have been deposited to Genbank (accessions OR026045-OR026086) with  
120 metadata available in BioSample accessions SAMN35159702 - SAMN35159803 (BioProject  
121 PRJNA974035). Deidentified, patient-specific molecular data are available upon request with  
122 appropriate human subject approvals.

123

## 124 **Results**

125 *Assay Validation.* We determined assay performance for a PCR and Sanger sequencing  
126 assay targeting the *Leishmania* mini-exon gene (6) using extracted DNA from axenic  
127 promastigote culture and residual clinical specimens known to be positive for *Leishmania* spp. or  
128 common and/or morphologically similar pathogens (Table S1). The assay's 95% limit of  
129 detection (LOD) was established as 1 genome per reaction by testing serial dilutions of purified  
130 genomic DNA into testing matrix (Table S2). Sensitivity of testing for DNA extracted from  
131 cultured promastigote cell pellets, purified parasite DNA, and patient specimens was 90.5%.  
132 Species complex identification was fully concordant with CDC gold-standard testing. Specificity  
133 was 100%, with no cross-reactivity with human DNA or other tested pathogens (Table S1).

134 *Testing cohort.* We clinically tested 218 specimens from 186 patients over the one-year  
135 period from September 2021 through August 2022. 94 patients (50.5%) had at least 1 specimen  
136 positive for *Leishmania* (Table 1). Specimens were submitted from 36 U.S. states and the  
137 territory of Puerto Rico, as well as Quebec, Canada and the Dominican Republic (Figure 1).  
138 California, Florida, and Texas submitted the most cases for testing, with corresponding positivity

139 rates of 48.5% (16/33), 50.0% (8/16), and 41.2% (7/17) (Figure 1D). Overall case and specimen  
140 positivity rates were 50.5% and 47.7% over the study period (Figure 2A, Table 1, Table 2). The  
141 months with the highest case volumes were June, May, and February 2022 (Figure S1). Median  
142 test turnaround time was 3.19 days (IQR 1.32 - 3.91) from specimen receipt.

143 *Demographics of positive cases.* Of patients testing positive for *Leishmania*, 59/94  
144 (62.8%) were aged 20-59 and 19 (20.2%) were under the age of 18, including 11 under age 10  
145 years (Table 1, Figure S2). Sixteen patients (17.0%) were over age 60, including 1 patient over  
146 80 years (Table 1, Figure S2). More patients with leishmaniasis were male (63.8%) (Table 1).  
147 Travel history was unavailable for 60 positive cases (63.8%), while 17 (18.1%) had documented  
148 international travel to *Leishmania*-endemic regions within 6 months prior to testing. Two (2.1%)  
149 cases documented international travel  $\geq 5$  years prior to diagnosis, while 7 (7.4%) noted travel  
150 history without specifying timing. Twelve positive cases (12.8%) were associated with travel to  
151 Costa Rica (Table S3). There were 7 cases (7.4%) with a history of migration from endemic  
152 areas and 1 case (1.1%) from a military service member with *L. major*. Although we did not  
153 receive cases where the possibility of endemic infection was explicitly documented, we noted 2  
154 cases positive for *L. mexicana* spp. complex from Texas, where that species is endemic, although  
155 travel information was not provided.

156 *Specimen characteristics.* Despite expectations for DNA degradation, formalin-fixed  
157 paraffin-embedded (FFPE) specimens yielded a higher overall positivity rate than fresh tissue  
158 specimens: 60.7% of 107 specimens versus 35.1% of 111 specimens ( $P < 0.0002$ , Chi-square  
159 test; Figure 2B, Table 3) (26). Positivity rate was highest (100%) in cases where staining patterns  
160 suspicious for intracellular organisms were reported (Table 3). Cases where characteristic  
161 *Leishmania* amastigotes were noted on histopathology had the second highest positivity rate

162 (88.2%) (Table 3). Of the 2 cases that were histopathology positive but negative by molecular  
163 testing, one was instead positive for *Staphylococcus aureus* and the other for *Histoplasma*  
164 *capsulatum* by additional clinical molecular testing performed in our laboratory.

165 The most commonly involved body sites were skin, representing 86 cases (91.5%),  
166 particularly from exposed areas: arms, legs, head, and neck (Figure 3A). Four positive cases  
167 (4.3%) were detected from 5 oropharyngeal specimens and identified as *L. braziliensis* spp.  
168 complex, two of which were recurrent infections (Table S4). Only one specimen collected from  
169 internal organ sites or body fluids potentially associated with visceral disease tested positive: a  
170 paraffin-embedded inguinal lymph node positive for *Leishmania donovani* spp. complex (Figure  
171 3B and 3C).

172 22 patients had multiple specimens submitted. These included 13 positive cases and 9  
173 negative cases (Table S4). Of the positive cases, 9 comprised specimen pairs collected less than  
174 30 days apart. In 3 cases the initial specimen was positive, but subsequent specimens sent >30  
175 days later were negative. One case involved multiple specimens collected 5 months apart that  
176 were positive for *L. guyanensis* spp. complex, having the same mini-exon sequence (Table S4).  
177 Two instances showed mini-exon sequence variation across different body sites: one case of *L.*  
178 *braziliensis* spp. complex in both an epiglottis and pharynx lesion and one case of *L. guyanensis*  
179 spp. complex in both an ear (helix) and shoulder lesion.

180 *Leishmania species and molecular epidemiology.* Mini-exon sequencing provided  
181 adequate resolution (>80% bootstrap) to achieve species complex-level identification (Figure 4,  
182 Table 2). Of the 94 positive cases, 71 (75.5%) were subgenus *Viannia*. 53 (56.4%) were  
183 identified as *L. guyanensis* spp. complex, 17 (18.1%) as *L. braziliensis* spp. complex, and 1



184 (1.1%) as *L. lainsoni* spp. complex. Detected sequences included 18 previously unreported mini-  
185 exon alleles (Table S5, BioProject 974035).

186 We observed significant mini-exon sequence conservation within *L. braziliensis*. Two *L*  
187 *braziliensis* spp. complex alleles accounted for 10 of 17 cases (Lbr\_A-06, Lbr\_B-04) and were  
188 separated from each other by 3 polymorphisms. Sequence conservation across *L. braziliensis* and  
189 *L. peruviana* reference strains precluded resolution of these two species with two exceptions.  
190 Two mini-exon sequences, Lbr\_F and Lbr\_G, formed a clade (>95% bootstrap) with “Type 2” *L*  
191 *braziliensis* mini-exon reference sequences (KF633199, MHOM/PE/03/LH2511; KF633195,  
192 MHOM/CO/90/LEM2216). Travel history was not available for Lbr\_F, while Lbr\_G had  
193 traveled to Peru. These Type 2 *braziliensis* sequences were detected once each.

194 The two member species of the *L. guyanensis* spp. complex, *L. guyanensis* and *L*  
195 *panamensis*, had nearly identical previously published mini-exon sequences, precluding  
196 identification to the species rank. A single mini-exon allele (Lgu\_A-39) accounted for most *L*  
197 *guyanensis* spp. complex cases (33/53), including 6 cases with identical sequences recovered in  
198 multiple lesions. The second most abundant allele (Lgu-B-07) accounted for 7 cases and was  
199 only distinguished from Lgu\_A-39 by homopolymer length variation. The next two most  
200 abundant alleles (Lgu\_C-03, Lgu\_D-03) accounted for 6 additional cases.

201 Nine cases (9.6%) were *L. mexicana* spp. complex and two alleles accounted for 7 of  
202 these (Lme\_A-04 and Lme\_B-03). The detected sequences formed a high-confidence clade with  
203 *L. mexicana* reference sequences (Figure 4). However, the mini-exon sequence (CP040130) from  
204 one recently completed, unpublished genome of *L. amazonensis*, UA301 (GCA\_005317125.1)  
205 had 100% identity to multiple detected sequences. The UA301 mini-exon sequence thus defies

206 the otherwise clear separation of *L. mexicana* and *L. amazonensis/L. garnhami* into two clades  
207 that are well-resolved by mini-exon sequences (Figure 4).

208 Fewer cases corresponded to OWL: 10 (10.6%) cases of *L. tropica* spp. complex and 3  
209 (3.2%) *L. major*, one of which was from a military service member. Other patients positive for  
210 OWL include one patient who traveled to Yemen, one who had previously lived in and recently  
211 visited Tunisia, and one identified as an Afghan refugee (Table S3). Available clinical history for  
212 the one *L. donovani* spp. complex infection (1.1%) was not sufficient to determine its acquisition  
213 and molecular diagnosis could not resolve the organism to the species level. Thus, this case  
214 could represent either an infection with Old World species *L. donovani* or *L. infantum*, or  
215 infection with New World *L. chagasi/infantum*.

216 Sequences within the *L. tropica* spp. complex included two potential subclades with  
217 >80% bootstrap support (Figure 4A-B). The remaining allele (Ltr\_G-01) had 99.75% identity  
218 over 392 nucleotides to *L. killicki* (GenBank AY155504) and was derived from a patient who  
219 had lived in and recently visited Tunisia. This case was reported to the species rank given the  
220 geographic association with *L. killicki* (Figure 4A, Table S3) (27).

221 The distribution of identified species paralleled the travel history in the 34 cases with  
222 documented exposures. Of these, 23 (67.6%) had traveled to or from North, Central, or South  
223 America (Table 2, Table S3). There were 7 known migration-related cases, including 6 NWL  
224 infections, comprising five *L. guyanensis* spp. complex; 1 *L. braziliensis* spp. complex. Four  
225 involved patients had traveled from Central and/or South America, while one had immigrated  
226 from West Africa, but did not have explicitly documented travel history to an endemic area. One  
227 patient from Afghanistan tested positive for *L. tropica* spp. complex (Table S3, Table S5).

228

## 229 Discussion

230 Our work describes molecular reference testing for *Leishmania* in the general U.S.  
231 population during a period where it was otherwise unavailable. This has provided a unique  
232 opportunity to compile a comprehensive, 1-year catalog of patient and pathogen characteristics  
233 that help approximate the incidence and epidemiology of infections in the U.S. In agreement  
234 with prior studies involving U.S. travelers, our case demographics reflect a slight male  
235 predominance at 63.8% (12,28–30). Also consistent with previous observations, positive cases  
236 were associated with recent travel to Central and South America, particularly Costa Rica, where  
237 there is a high incidence of leishmaniasis (Table 1, Table S2) (12,28,29,31). 11.7% of cases in  
238 this work were in children younger than 10 and 6.4% in the 10-18 age range, adding to reports of  
239 pediatric infection in the U.S. (12,13,29,32,33)

240 Migration-related leishmaniasis has increased globally, but U.S.-specific data has been  
241 limited to sporadic case studies (28,34–37). This work identifies 7 cases (7.4% of all positive) of  
242 likely migration-related infection originating from multiple continents, highlighting a need for  
243 increased clinician awareness in this vulnerable population (Table 1, Table S3). Given that travel  
244 histories were not available for most (63.8%) cases, this likely underestimates the true disease  
245 burden in this group. Endemic infection with *L. mexicana* spp. complex has been documented in  
246 Texas and Oklahoma, but the provided clinical histories from our cases did not enable us to  
247 determine the probability of autochthonous leishmaniasis.

248 CL is the most common clinical manifestation reported in recent U.S. studies. (11–13),  
249 and 91.5% of cases in this study were CL. We additionally detected *L. braziliensis* in 4 patients  
250 with mucosal disease, including two with relapsed MCL acquired during travel several years  
251 prior. In contrast, a prior case series and review by Murray et al. reported only 6 documented

252 civilian cases of MCL in the U.S from 1975-2020 (36). Our cohort may be enriched for MCL  
253 due to the high prevalence of subgenus *Viannia*, which accounted for 75% of all cases.

254 Identification to species complexes within subgenus *Viannia* is clinically informative for  
255 treatment and monitoring, due to the associated risk of progression to MCL with most *Viannia*  
256 species (3). Within *Viannia*, mini-exon sequencing typically lacked resolution beyond the  
257 species complex level, particularly *L. guyanensis* spp. complex (Figure 4). Consistent with prior  
258 analyses (6), our assay could distinguish *L. braziliensis* Type 2 from *L. peruviana* (Figure 4).  
259 Most Type 1 *L. braziliensis* and *L. peruviana* couldn't be distinguished; clinically, this may  
260 overestimate a patient's risk of developing mucosal disease.

261 Intriguingly, we identified a high-confidence clade of *L. braziliensis* Type 1 (KF633199,  
262 Lbr-B, Lbr-C) that may be separable from *L. peruviana* and an outlier sequence in *L. braziliensis*  
263 spp. complex (Lbr\_H) with 100% identity to the first reported *L. braziliensis* infection in  
264 Suriname (HE610677, Figure 4) (38). These emerging clades suggest additional mini-exon  
265 sequences from well-characterized strains could increase molecular diagnostic resolution,  
266 particularly in combination with detailed travel history. We note several patients with positive  
267 cutaneous specimens who traveled to multiple countries and were consequently at risk for  
268 infection from different *Leishmania* species. In such instances improved species-level  
269 identification would more accurately assess risk for progression to mucosal involvement (3).

270 Visceral leishmaniasis cases are rare in the U.S. but have been documented in service  
271 members returning from endemic regions, and there are concerns for undetected asymptomatic  
272 infection and risk for reactivation in these veterans (11,12,39). In this series, only one case tested  
273 positive for *L. donovani* spp. complex, which is associated with visceral disease and was

274 consistent with our detection in a lymph node. In agreement with previous studies (6) our assay  
275 could not distinguish between *L. donovani* and *L. infantum/chagasi*.

276 Clinical and laboratory diagnosis of leishmaniasis can be challenging, and molecular  
277 methods are considered the most sensitive diagnostic modality (2,3). This work and others have  
278 demonstrated the utility of the mini-exon gene as a sensitive, specific, and effective target for  
279 distinguishing the major species complexes (6,7,40). Moreover, our assay readily detects  
280 infection from a variety of specimen types associated with CL, MCL, and VL, and has  
281 demonstrated good performance with FFPE specimens. With rapid turnaround times (~3 days),  
282 molecular testing and sequencing can effectively inform patient treatment and management.

283 We found that mini-exon sequencing is sufficient for identification of clinically relevant  
284 species complexes, supporting prior work showing that species identification from mini-exon  
285 analysis had comparable performance to multilocus sequence typing or single gene target assays  
286 (6,40). We successfully resolved *L. lainsoni* from other *Viannia* species, which has historically  
287 posed technical challenges (6). However, an important limitation is that most closely related  
288 species within each of the *L. donovani*, *L. guyanensis*, and *L. braziliensis* species complexes  
289 could not be resolved. This challenge is clinically relevant within *L. braziliensis* spp. complex,  
290 given the greater propensity of *L. braziliensis* for mucocutaneous spread relative to *L. peruviana*  
291 (41). Nevertheless, expanding publicly available mini-exon sequence records may enable more  
292 specific identification.

293 We identified 18 previously unreported mini-exon alleles, expanding the diversity of  
294 known sequences and highlighting opportunities to improve molecular species identification.  
295 Whole-genome sequencing will enable more accurate and specific identification, resolve  
296 technical artifacts, and identify co-infections (7). The challenges in resolving species within

297 complexes and unexpected findings from recently sequenced strains, such as *L. amazonensis*  
298 UA301 clading with *L. mexicana* strains, emphasize the evolutionary complexity of *Leishmania*  
299 species (42–44).

300 Although illuminating, there are several limitations to this study. First, our estimates of  
301 disease burden and the granularity of our demographic data are limited by the incompleteness of  
302 clinical information provided to our reference laboratory. This poses particular challenges in  
303 interpreting patients with multiple positive specimens, as prolonged PCR positivity does not  
304 necessarily reflect treatment failure (45). Second, it is likely that additional civilian cases were  
305 not tested at our laboratory, particularly after testing resumed at CDC during July 2022. Third,  
306 *Leishmania* testing remained available for Department of Defense personnel and contractors at  
307 the Walter Reed Army Institute of Research (WRAIR) during the study period (46); therefore,  
308 the single *L. major* case we detected in a U.S. armed forces personnel likely underrepresents  
309 disease burden. A survey by Stahlman *et al* documented over 2,000 cases in the U.S. Armed  
310 Forces from 2001-2016 but noted significantly fewer cases starting in 2011, with only 11 in 2015  
311 (3,11,46). Finally, mini-exon sequence data have inherent limitations. The *Leishmania* mini-exon  
312 gene is comprised of 100-200 tandem repeats, which increases the risk of chimeric PCR artifacts  
313 (7) and masks low abundance sequence variants. Although our validation studies confirmed this  
314 issue did not interfere with the ability to discriminate between different species complexes, we  
315 are limited in making more refined phylogenetic inferences that would require more  
316 comprehensive whole-genome sequencing data.

317 Leishmaniasis remains challenging to recognize clinically, and we expect it is still  
318 underdiagnosed in the U.S. (2,12,13). Most state public health agencies do not require positive  
319 test notification, with the exception of Texas, and suboptimal reporting compliance has been

320 documented (13). Our study demonstrates that molecular testing by mini-exon sequencing  
321 provides clinically actionable species-level identification, and when considered in aggregate,  
322 suggests a significantly higher annual incidence in the U.S. than previously appreciated. The  
323 burden, distribution, and biology of this disease will continue to change with global travel,  
324 migration, and climate changes impacting parasite, vector, and host geography (47). This work  
325 highlights the role of molecular testing in enabling diagnostic laboratory professionals,  
326 providers, and public health agencies to track and appropriately treat this disease.

327

328

### 329 **Acknowledgements**

330 We are grateful to Stephanie Krieg, MLS(ASCP) and Dr. Dhruva SenGupta for their work  
331 establishing clinical assay in the laboratory information system (LIS) and integration with the  
332 electronic medical record; Dan Hoogestraat MB(ASCP) for assistance obtaining data from the  
333 LIS; and Dr. Noah Hoffman for helpful discussions of phylogenetic analysis. We thank our  
334 colleagues at the CDC Parasitic Disease Branch for referring testing to the University of  
335 Washington.

336

### 337 **Biographical Sketch**

338 Dr. Truong is a clinical microbiology and molecular microbiology laboratory director at UW  
339 Medicine. Her research interests include diagnostic stewardship and evaluating the clinical  
340 impact of rapid diagnostic technologies to improve patient care.

341

### 342 **References**

- 343 1. Global leishmaniasis surveillance: 2019–2020, a baseline for the 2030 roadmap [Internet].  
344 [cited 2022 Sep 13]. Available from: [https://www.who.int/publications-detail-redirect/who-](https://www.who.int/publications-detail-redirect/who-wer9635-401-419)  
345 [wer9635-401-419](https://www.who.int/publications-detail-redirect/who-wer9635-401-419)
- 346 2. Mann S, Frasca K, Scherrer S, Henao-Martínez AF, Newman S, Ramanan P, et al. A Review  
347 of Leishmaniasis: Current Knowledge and Future Directions. *Curr Trop Med Rep*.  
348 2021;8(2):121–32.
- 349 3. Aronson N, Herwaldt BL, Libman M, Pearson R, Lopez-Velez R, Weina P, et al. Diagnosis  
350 and Treatment of Leishmaniasis: Clinical Practice Guidelines by the Infectious Diseases  
351 Society of America (IDSA) and the American Society of Tropical Medicine and Hygiene  
352 (ASTMH). *Clin Infect Dis*. 2016 Dec 15;63(12):e202–64.
- 353 4. Mathison BA, Bradley BT. Review of the Clinical Presentation, Pathology, Diagnosis, and  
354 Treatment of Leishmaniasis. *Lab Med*. 2022 Dec 5;lmac134.
- 355 5. Goto H, Lindoso JAL. Current diagnosis and treatment of cutaneous and mucocutaneous  
356 leishmaniasis. *Expert Rev Anti Infect Ther*. 2010 Apr 1;8(4):419–33.
- 357 6. Van der Auwera G, Ravel C, Verweij JJ, Bart A, Schönian G, Felger I. Evaluation of Four  
358 Single-Locus Markers for Leishmania Species Discrimination by Sequencing. *J Clin*  
359 *Microbiol*. 2014 Apr;52(4):1098–104.
- 360 7. Fernandes O, Murthy VK, Kurath U, Degraeve WM, Campbell DA. Mini-exon gene variation  
361 in human pathogenic Leishmania species. *Mol Biochem Parasitol*. 1994 Aug 1;66(2):261–71.
- 362 8. World Health Organization. Global leishmaniasis update, 2006–2015: a turning point in  
363 leishmaniasis surveillance. *Wkly Epidemiol Rec* [Internet]. 2017 Sep 22;92. Available from:  
364 <https://www.who.int/publications/i/item/who-wer9238>
- 365 9. Wright NA, Davis LE, Aftergut KS, Parrish CA, Cockerell CJ. Cutaneous leishmaniasis in  
366 Texas: A northern spread of endemic areas. *J Am Acad Dermatol*. 2008 Apr 1;58(4):650–2.
- 367 10. Clarke CF, Bradley KK, Wright JH, Glowicz J. Case report: Emergence of autochthonous  
368 cutaneous leishmaniasis in northeastern Texas and southeastern Oklahoma. *Am J Trop Med*  
369 *Hyg*. 2013 Jan;88(1):157–61.
- 370 11. Stahlman S, Williams VF, Taubman SB. Incident diagnoses of leishmaniasis, active and  
371 reserve components, U.S. Armed Forces, 2001–2016. *MSMR*. 2017 Feb;24(2):2–7.
- 372 12. Curtin JM, Aronson NE. Leishmaniasis in the United States: Emerging Issues in a Region  
373 of Low Endemicity. *Microorganisms*. 2021 Mar;9(3):578.
- 374 13. McIlwee BE, Weis SE, Hosler GA. Incidence of Endemic Human Cutaneous  
375 Leishmaniasis in the United States. *JAMA Dermatol*. 2018 Sep 1;154(9):1032–9.



- 376 14. Prevention CC for DC and. CDC - Leishmaniasis - Resources for Health Professionals  
377 [Internet]. 2022 [cited 2022 Nov 23]. Available from:  
378 [https://www.cdc.gov/parasites/leishmaniasis/health\\_professionals/index.html](https://www.cdc.gov/parasites/leishmaniasis/health_professionals/index.html)
- 379 15. Lieberman JA, Bryan A, Mays JA, Stephens K, Kurosawa K, Mathias PC, et al. High  
380 Clinical Impact of Broad-Range Fungal PCR in Suspected Fungal Sinusitis. *J Clin Microbiol.*  
381 2021 Aug 18;JCM0095521.
- 382 16. McCormick DW, Rassouliau-Barrett SL, Hoogestraat DR, Salipante SJ, SenGupta D,  
383 Dietrich EA, et al. Bartonella spp. Infections Identified by Molecular Methods, United States.  
384 *Emerg Infect Dis.* 2023 Mar;29(3):467–76.
- 385 17. R Core Team. R: A Language and Environment for Statistical Computing [Internet].  
386 Vienna, Austria: R Foundation for Statistical Computing; 2022. Available from:  
387 <https://www.R-project.org/>
- 388 18. Lorenzo PD. usmap: US Maps Including Alaska and Hawaii [Internet]. 2022 [cited 2022  
389 Nov 29]. Available from: <https://CRAN.R-project.org/package=usmap>
- 390 19. Wickham H, Averick M, Bryan J, Chang W, McGowan LD, François R, et al. Welcome  
391 to the Tidyverse. *J Open Source Softw.* 2019 Nov 21;4(43):1686.
- 392 20. Wilke CO. cowplot: Streamlined Plot Theme and Plot Annotations for “ggplot2”  
393 [Internet]. 2020 [cited 2022 Nov 29]. Available from: [https://CRAN.R-](https://CRAN.R-project.org/package=cowplot)  
394 [project.org/package=cowplot](https://CRAN.R-project.org/package=cowplot)
- 395 21. Wickham H. ggplot2: Elegant Graphics for Data Analysis. [Internet]. Springer-Verlag  
396 New York; Available from: <https://ggplot2.tidyverse.org>
- 397 22. GraphPad Software [Internet]. [cited 2023 Feb 4]. Available from:  
398 <https://www.graphpad.com/quickcalcs/>
- 399 23. Okonechnikov K, Golosova O, Fursov M, the UGENE team. Unipro UGENE: a unified  
400 bioinformatics toolkit. *Bioinformatics.* 2012 Apr 15;28(8):1166–7.
- 401 24. Trifinopoulos J, Nguyen LT, von Haeseler A, Minh BQ. W-IQ-TREE: a fast online  
402 phylogenetic tool for maximum likelihood analysis. *Nucleic Acids Res.* 2016 Jul  
403 8;44(W1):W232–5.
- 404 25. Yu G. Using ggtree to Visualize Data on Tree-Like Structures. *Curr Protoc Bioinforma.*  
405 2020;69(1):e96.
- 406 26. Guyard A, Boyez A, Pujals A, Robe C, Tran Van Nhieu J, Allory Y, et al. DNA degrades  
407 during storage in formalin-fixed and paraffin-embedded tissue blocks. *Virchows Arch Int J*  
408 *Pathol.* 2017 Oct;471(4):491–500.

- 409 27. Chaara D, Ravel C, Bañuls AL, Haouas N, Lami P, Talignani L, et al. Evolutionary  
410 history of *Leishmania killicki* (synonymous *Leishmania tropica*) and taxonomic implications.  
411 *Parasit Vectors*. 2015 Apr 1;8(1):198.
- 412 28. Boggild AK, Caumes E, Grobusch MP, Schwartz E, Hynes NA, Libman M, et al.  
413 Cutaneous and mucocutaneous leishmaniasis in travellers and migrants: a 20-year  
414 GeoSentinel Surveillance Network analysis. *J Travel Med*. 2019 Dec 23;26(8):taz055.
- 415 29. Herwaldt BL, Stokes SL, Juranek DD. American Cutaneous Leishmaniasis in U.S.  
416 Travelers. *Ann Intern Med*. 1993 May 15;118(10):779–84.
- 417 30. Melby PC, Kreutzer RD, McMahon-Pratt D, Gam AA, Neva FA. Cutaneous  
418 leishmaniasis: review of 59 cases seen at the National Institutes of Health. *Clin Infect Dis Off*  
419 *Publ Infect Dis Soc Am*. 1992 Dec;15(6):924–37.
- 420 31. Karimkhani C, Wanga V, Coffeng LE, Naghavi P, Dellavalle RP, Naghavi M. Global  
421 burden of cutaneous leishmaniasis: a cross-sectional analysis from the Global Burden of  
422 Disease Study 2013. *Lancet Infect Dis*. 2016 May 1;16(5):584–91.
- 423 32. Douvoyiannis M, Khromachou T, Byers N, Hargreaves J, Murray HW. Cutaneous  
424 Leishmaniasis in North Dakota. *Clin Infect Dis*. 2014 Sep 1;59(5):e73–5.
- 425 33. Ganjaei KG, Lawton K, Gaur S. Cutaneous Leishmaniasis in an American Adolescent  
426 Returning From Israel. *J Pediatr Infect Dis Soc*. 2018 Aug 17;7(3):e178–81.
- 427 34. Lemieux A, Lagacé F, Billick K, Ndao M, Yansouni CP, Semret M, et al. Cutaneous  
428 leishmaniasis in travellers and migrants: a 10-year case series in a Canadian reference centre  
429 for tropical diseases. *Can Med Assoc Open Access J*. 2022 Apr 1;10(2):E546–53.
- 430 35. Briggs N, Wei BM, Ahuja C, Baker C, Foppiano Palacios C, Lee E, et al. Mucocutaneous  
431 Leishmaniasis in a Pregnant Immigrant. *Open Forum Infect Dis*. 2022 Aug 1;9(8):ofac360.
- 432 36. Murray HW, Eiras DP, Kirkman LA, Chai RL, Caplivski D. Case Report: Mucosal  
433 Leishmaniasis in New York City. *Am J Trop Med Hyg*. 2020 Mar 30;102(6):1319–22.
- 434 37. Tejura N, Kim E, Dever LL, Chew D. Case Report: Mucocutaneous Leishmaniasis  
435 Masquerading as Idiopathic Midline Granulomatous Disease. *Am J Trop Med Hyg*. 2019 Sep  
436 23;101(5):1107–10.
- 437 38. Hu RVPF, Kent AD, Adams ER, van der Veer C, Sabajo LOA, Mans DRA, et al. First  
438 case of cutaneous leishmaniasis caused by *Leishmania (Viannia) braziliensis* in Suriname. *Am*  
439 *J Trop Med Hyg*. 2012 May;86(5):825–7.
- 440 39. Mody RM, Lakhali-Naouar I, Sherwood JE, Koles NL, Shaw D, Bigley DP, et al.  
441 Asymptomatic Visceral *Leishmania infantum* Infection in US Soldiers Deployed to Iraq. *Clin*  
442 *Infect Dis*. 2019 May 30;68(12):2036–44.

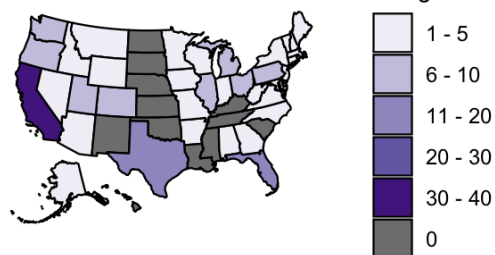
- 443 40. Roelfsema JH, Nozari N, Herremans T, Kortbeek LM, Pinelli E. Evaluation and  
444 improvement of two PCR targets in molecular typing of clinical samples of *Leishmania*  
445 patients. *Exp Parasitol*. 2011 Jan 1;127(1):36–41.
- 446 41. Reyes-Uribe P, Pereira-dos-Santos T, De Jesus JB, Mesquita-Rodrigues C, Arevalo J,  
447 Cupolillo E, et al. Comparative zymographic analysis of metallopeptidase of *Leishmania*  
448 (*Viannia*) *peruviana* and *Leishmania* (*Viannia*) *braziliensis* isolates from Peru. *Parasitol Int*.  
449 2012 Dec;61(4):513–9.
- 450 42. Species Typing in Dermal Leishmaniasis | Clinical Microbiology Reviews [Internet].  
451 [cited 2022 Oct 4]. Available from: [https://journals.asm.org/doi/10.1128/CMR.00104-](https://journals.asm.org/doi/10.1128/CMR.00104-14?url_ver=Z39.88-2003&rfr_id=ori:rid:crossref.org&rfr_dat=cr_pub%20%20pubmed)  
452 [14?url\\_ver=Z39.88-2003&rfr\\_id=ori:rid:crossref.org&rfr\\_dat=cr\\_pub%20%20pubmed](https://journals.asm.org/doi/10.1128/CMR.00104-14?url_ver=Z39.88-2003&rfr_id=ori:rid:crossref.org&rfr_dat=cr_pub%20%20pubmed)
- 453 43. Kato H, Gomez EA, Seki C, Furumoto H, Martini-Robles L, Muzzio J, et al. PCR-RFLP  
454 analyses of *Leishmania* species causing cutaneous and mucocutaneous leishmaniasis revealed  
455 distribution of genetically complex strains with hybrid and mito-nuclear discordance in  
456 Ecuador. *PLoS Negl Trop Dis*. 2019 May 6;13(5):e0007403.
- 457 44. Kato H, Cáceres AG, Gomez EA, Tabbabi A, Mizushima D, Yamamoto DS, et al.  
458 Prevalence of Genetically Complex *Leishmania* Strains With Hybrid and Mito-Nuclear  
459 Discordance. *Front Cell Infect Microbiol* [Internet]. 2021 [cited 2022 Dec 13];11. Available  
460 from: <https://www.frontiersin.org/articles/10.3389/fcimb.2021.625001>
- 461 45. Mendonça MG, de Brito MEF, Rodrigues EHG, Bandeira V, Jardim ML, Abath FGC.  
462 Persistence of leishmania parasites in scars after clinical cure of American cutaneous  
463 leishmaniasis: is there a sterile cure? *J Infect Dis*. 2004 Mar 15;189(6):1018–23.
- 464 46. Walter Reed Army Institute of Research (WRAIR) > Collaborate > *Leishmania*  
465 Diagnostics Laboratory [Internet]. [cited 2022 Nov 30]. Available from:  
466 <https://wrair.health.mil/Collaborate/Leishmania-Diagnostics-Laboratory/>
- 467 47. González C, Wang O, Strutz SE, González-Salazar C, Sánchez-Cordero V, Sarkar S.  
468 Climate change and risk of leishmaniasis in north america: predictions from ecological niche  
469 models of vector and reservoir species. *PLoS Negl Trop Dis*. 2010 Jan 19;4(1):e585.

## 470 **Figures**

471 **Figure 1. Geographic distribution of patients whose specimens were submitted to our**  
472 **laboratory for *Leishmania* testing from September 2021 to August 2022.**

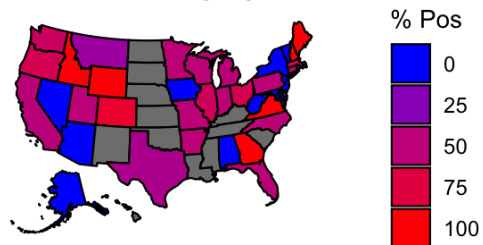
**A**

Tested Patients by State



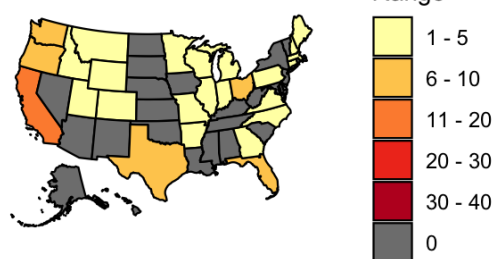
**B**

Percent Positivity by State

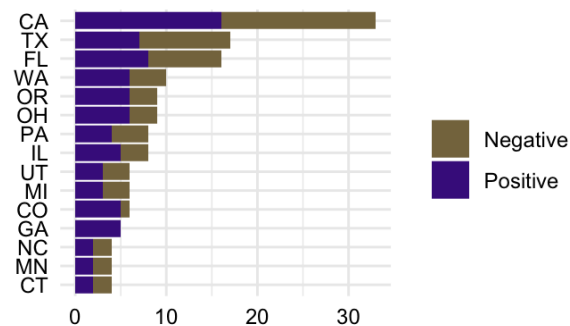


**C**

Detected Cases by State



**D** Test Volume - Top 15 States

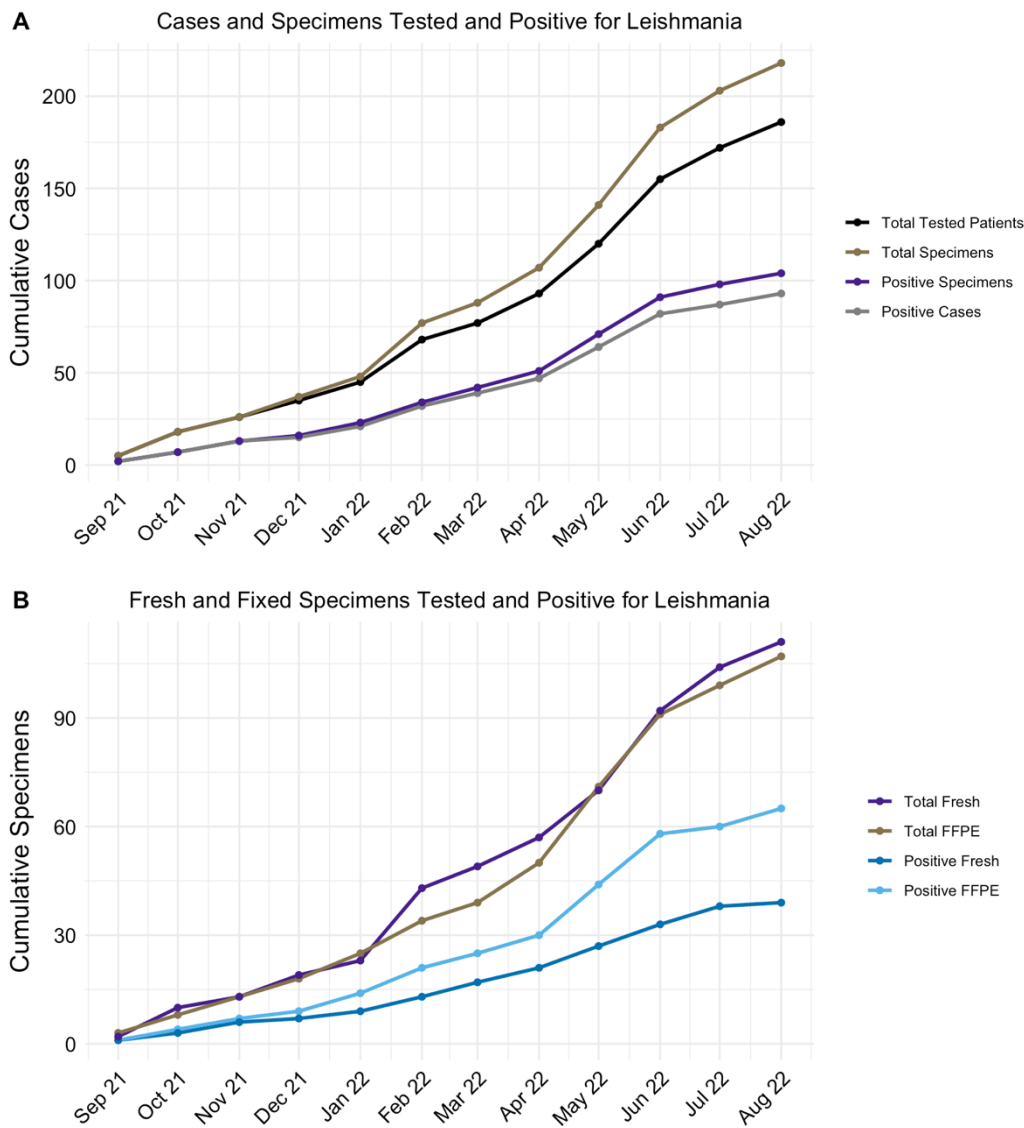


473

474

475 **Figure 2. Cumulative number of specimens and cases from September 2021 to August**  
476 **2022.**

477



478

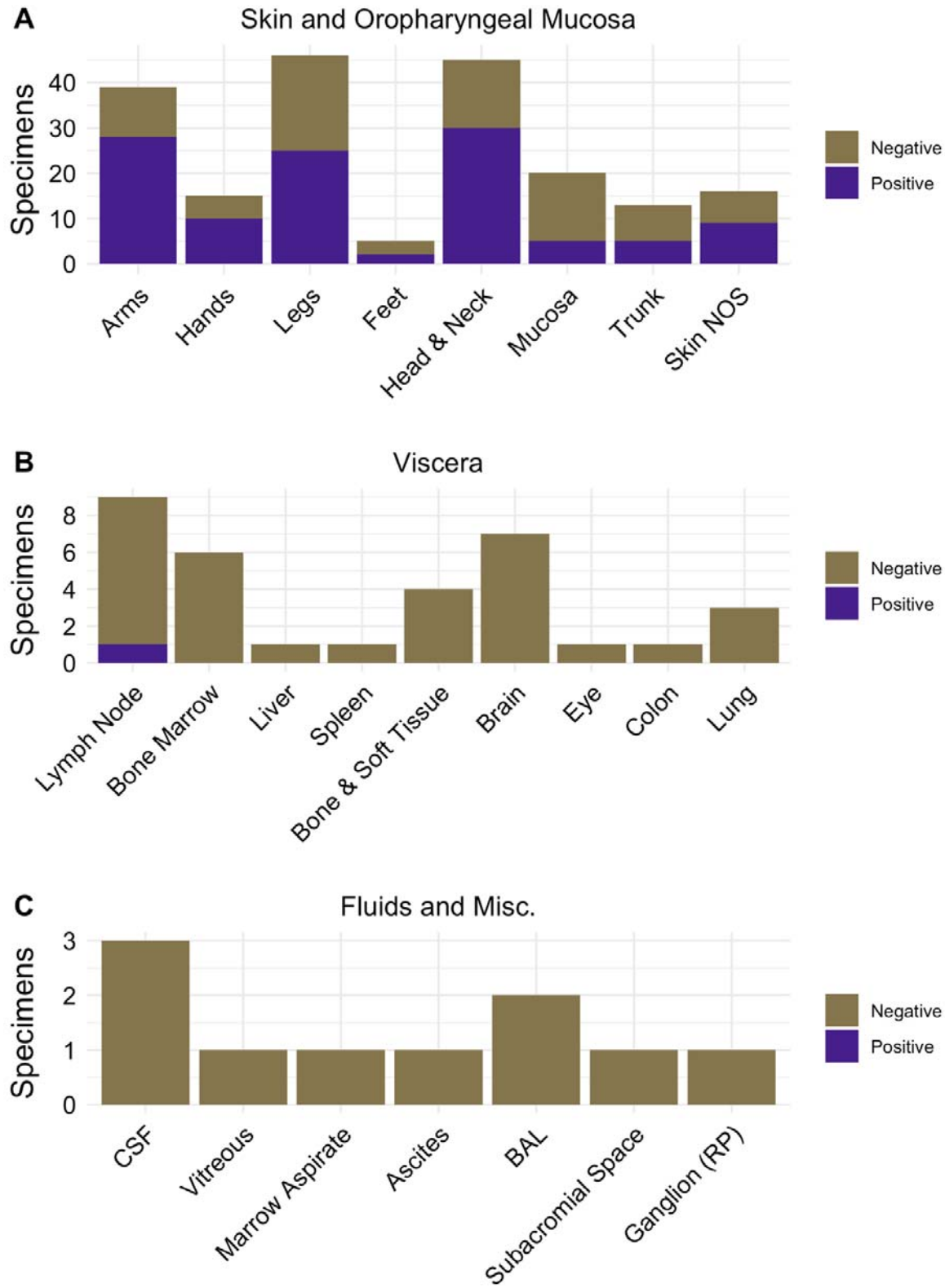
479

480

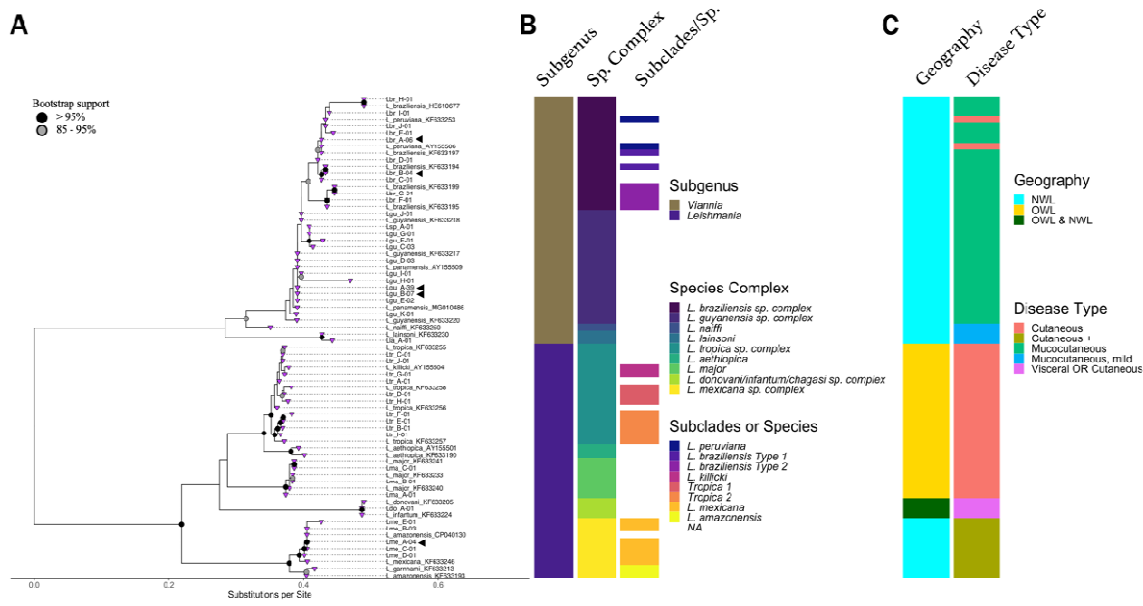
481

482

483 **Figure 3. Specimen types submitted for *Leishmania* testing.**



485 **Figure 4. Taxonomic and epidemiologic characteristics of *Leishmania* mini-exon sequences.**



486

487

488 **Figure legends**

489 **Figure 1. Geographic distribution of patients whose specimens were submitted to our**  
490 **laboratory for *Leishmania* testing from September 2021 to August 2022.** Not depicted in this  
491 figure: 1 case from Quebec, Canada, 1 case from Puerto Rico. 1 case from the Dominican  
492 Republic was submitted by an institution in Florida. (A) The number of patients tested by each  
493 state in the U.S. (B) The positivity rate per state during this time period. States shaded in grey  
494 did not submit any specimens. (C) The number of patients who tested positive for *Leishmania* by  
495 each state. (D) List of the top 15 states by total test volume.

496  
497 **Figure 2. Cumulative number of specimens and cases from September 2021 to August**  
498 **2022.** Cumulative testing showing (A) total and positive volume of patients and specimens  
499 during each month and (B) total and positive volume of fresh vs formalin-fixed paraffin-  
500 embedded specimens during each month.

501  
502 **Figure 3. Specimen types submitted for *Leishmania* testing.** Number of negative and positive  
503 specimens submitted from (A) skin and oropharyngeal mucosa, (B) internal organs, and (C) body  
504 fluids and miscellaneous sites. NOS = Not otherwise specified, RP = retroperitoneal.

505  
506 **Figure 4. Taxonomic and epidemiologic characteristics of *Leishmania* mini-exon sequences.**  
507 (A) Detected mini-exon sequences are represented as L, first two letters of species name,  
508 sequence variant, and number of times detected. The five most abundant mini-exon alleles are  
509 marked with arrowheads. Tips are purple triangles. Bootstrap values >95% are indicated as solid  
510 black nodes and 85-95% as grey nodes with black borders. Reference sequences are displayed



511 with full species name and Genbank accession for mini-exon locus; *L. amazonensis* strain  
512 UA301 is indicated by the corresponding mini-exon locus CP040130. X-axis scale is  
513 substitutions per site. (B) Bars represent defined taxonomic descriptions of subgenus and species  
514 complex, as well as possible subclades or specific species within each complex as determined by  
515 mini-exon sequence similarity. (C) Epidemiologic associations, including geography and clinical  
516 presentation. OWL = Old World *Leishmania*, NWL = New World *Leishmania*.

517 **Tables**

<b>Characteristic</b>	<b># cases tested</b>	<b># cases positive</b>	<b>(%) positive by characteristic</b>	<b>(%) positive out of total positive cases (n = 94)</b>
<b>Total tested</b>	186	94	(50.5)	-
<b>Age group</b>				
< 20	30	19	(63.3)	(20.2)
< 10	15	11	(73.3)	(11.7)
20-39	60	34	(56.7)	(36.2)
40-59	57	25	(43.9)	(26.6)
60-79	35	15	(42.9)	(16.0)
>_80	4	1	(25.0)	(1.1)
<b>Sex</b>				
Male	107	60	(56.1)	(63.8)
Female	76	32	(42.1)	(34.0)
Unknown	3	2	(66.7)	(2.1)
<b>Travel history</b>				
Travel history				
Migration	10	7	(70.0)	(7.4)
Travel ≤6 months	21	17	(81.0)	(18.1)
Travel >6 months	4	2	(50.0)	(2.1)
Travel, timing not specified	13	7	(53.8)	(7.4)
Military	1	1	(100.0)	(1.1)
No travel history	1	0	(0)	(0)
Unknown	136	60	(44.1)	(63.8)

518 **Table 1. Demographic characteristics of patients with positive *Leishmania* PCR results.**

519

520 **Table 2.** Species identified

<i>Leishmania</i> species (n = 94)	# positive (%)	521	by mini-exon sequencing
Subgenus <i>Viannia</i>			
<i>Leishmania braziliensis</i> spp. complex	17 (18.1)	522	
<i>Leishmania guyanensis</i> spp. complex	53 (56.4)	523	
<i>Leishmania lainsoni</i>	1 (1.1)	524	
Subgenus <i>Leishmania</i>			
<i>Leishmania donovani</i> spp. complex	1 (1.1)	526	
<i>Leishmania major</i>	3 (3.2)	527	
<i>Leishmania mexicana</i> spp. complex	9 (9.6)	529	
<i>Leishmania tropica</i> spp. complex <sup>A</sup>	10 (10.6)	530	

531  
532  
533  
534

<sup>A</sup> One case was reported as *L. killicki*, a member of the *L. tropica* spp. complex.

535 **Table 3. Clinical and histopathological correlation with test positivity**

	Positive for <i>Leishmania</i> (%)
<b>Specimen type (n = 218)</b>	
Fresh tissue	39/111 (35.1)
FFPE	65/107 (60.7)
Total	104/218 (47.7)
<b>Cases with ulcers or lesions on physical exam (n = 186)</b>	
Yes	45/68 (66.1)
Unknown	49/118 (41.5)
<b>Cases with histopathological findings</b>	
Amastigotes reported	15/17 (88.2)
Staining suspicious for organisms	12/12 (100.0)
No organisms seen	27/61 (34.4)
Unknown	40/96 (41.7)

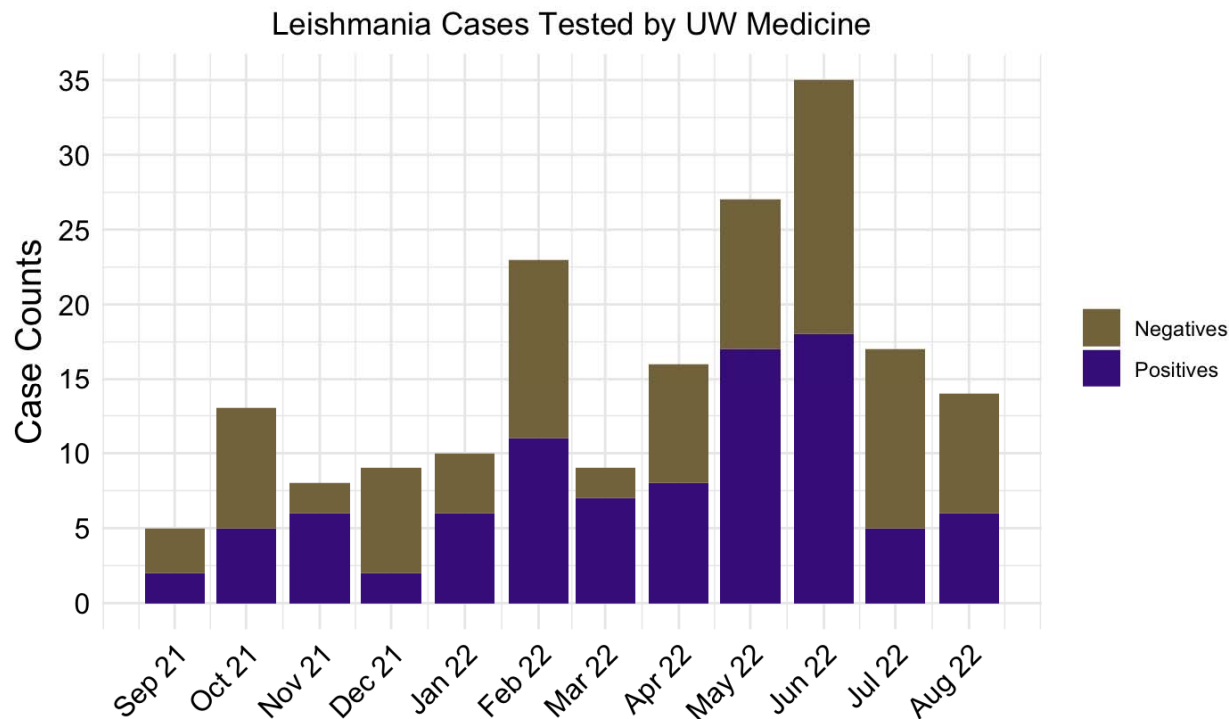
536

537

538 **Supplemental Materials**

539

540 **Figure S1. Case volume and positivity by month of testing.**



541

542 **Figure S1.** Number of negative and positive specimens submitted and tested during each month

543 of the study period. Negative cases are in gold; positive cases in purple.

544

545

546

547

548

549

550

551

552

553

554

555

556

557

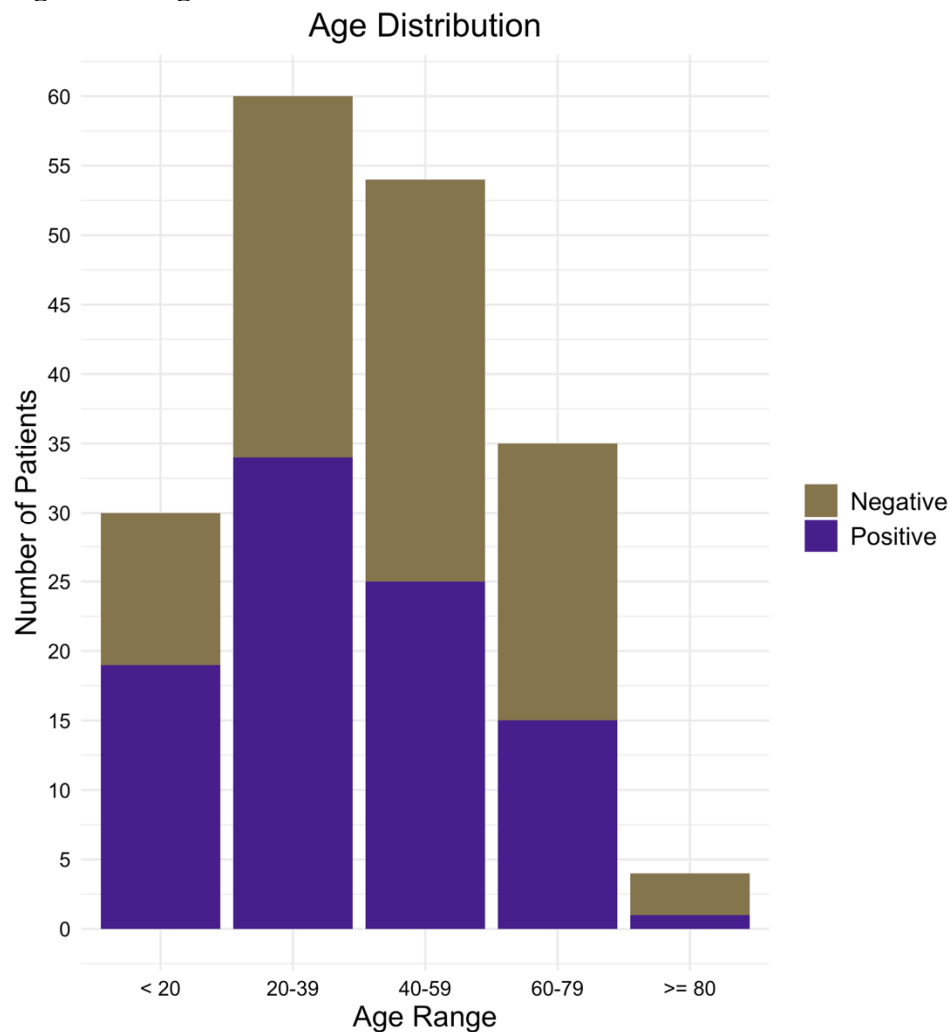
558

559

560

561

562 **Figure S2. Age Distribution of Patients Tested for Leishmaniasis.**



563 **Figure S2.** Number of patients tested by indicated age range (X-axis). Negative cases are in  
564 gold; positive cases in purple.  
565  
566  
567

568 **Table S1. Test performance and validation**  
569

Specimen number	Specimen type	Reference identification	<i>Leishmania</i> PCR identification	Agreement
1	Cultured strain	<i>L. donovani</i>	<i>L. donovani</i> spp. complex	Yes
2	Cultured strain	<i>L. major</i>	<i>L. major</i>	Yes
3	Cultured strain	<i>L. aethiopica</i>	<i>L. aethiopica</i>	Yes
4	Cultured strain	<i>L. chagasi</i>	<i>L. donovani</i> spp. complex	Yes
5	Cultured strain	<i>L. guyanensis</i>	<i>L. guyanensis</i>	Yes
6	Genomic DNA	<i>L. tropica</i>	<i>L. tropica</i>	Yes
7	Cultured strain	<i>L. panamensis</i>	<i>L. guyanensis/L. panamensis</i>	Yes
8	Cultured strain	<i>L. amazonensis</i>	<i>L. amazonensis</i>	Yes
9	Patient specimen FFPE	<i>L. tropica</i>	<i>L. tropica</i>	Yes
10	Patient specimen FFPE	<i>L. braziliensis</i>	<i>L. braziliensis</i>	Yes
11	Patient specimen FFPE	<i>L. braziliensis</i>	<i>L. braziliensis</i>	Yes
12	Patient specimen FFPE	<i>L. braziliensis</i>	<i>L. braziliensis</i>	Yes
13	Patient specimen FFPE	<i>L. braziliensis</i>	Not detected	No
14	Patient specimen FFPE	<i>L. braziliensis</i>	<i>L. braziliensis</i>	Yes
15	Patient specimen FFPE	<i>L. braziliensis</i>	<i>L. braziliensis</i>	Yes
16	Patient specimen FFPE	<i>L. braziliensis</i>	Not detected	No
17	Patient specimen FFPE	<i>Leishmania sp.</i>	<i>L. chagasi/L. infantum</i>	Yes
18	Patient specimen tissue	<i>Leishmania sp.</i>	<i>L. guyanensis/L. panamensis</i>	Yes
19	Patient specimen tissue	<i>Leishmania sp.</i>	<i>L. guyanensis/L. panamensis</i>	Yes
20	Patient specimen FFPE	<i>Leishmania sp.</i>	<i>L. guyanensis/L. panamensis</i>	Yes
21	Patient specimen tissue	<i>Leishmania sp.</i>	<i>L. braziliensis/L. peruviana</i>	Yes
22	Patient specimen fluid	<i>Pneumocystis jiroveci</i>	Not detected	Yes
23	Patient specimen fluid	<i>Pneumocystis jiroveci</i>	Not detected	Yes

24	Patient specimen tissue	<i>Toxoplasma gondii</i>	Not detected	Yes
25	Patient specimen tissue	<i>Toxoplasma gondii</i>	Not detected	Yes
26	Patient specimen tissue	<i>Histoplasma capsulatum</i>	Not detected	Yes
27	Patient specimen tissue	<i>Histoplasma capsulatum</i>	Not detected	Yes
28	Patient specimen FFPE	<i>Histoplasma capsulatum</i>	Not detected	Yes
29	Patient specimen fluid	<i>Histoplasma capsulatum</i>	Not detected	Yes
30	Patient specimen fluid	<i>Candida albicans</i>	Not detected	Yes
31	Patient specimen FFPE	<i>Candida tropicalis</i>	Not detected	Yes
32	Patient specimen fluid	<i>Candida glabrata</i>	Not detected	Yes
33	Patient specimen tissue	<i>Sporothrix schenckii</i>	Not detected	Yes
34	Patient specimen tissue	<i>Aspergillus fumigatus</i>	Not detected	Yes
35	Patient specimen FFPE	<i>Aspergillus fumigatus</i>	Not detected	Yes
36	Patient specimen tissue	<i>Escherichia coli</i>	Not detected	Yes
37	Patient specimen FFPE	<i>Escherichia coli</i>	Not detected	Yes
38	Patient specimen tissue	<i>Pseudomonas aeruginosa</i>	Not detected	Yes
39	Patient specimen tissue	<i>Pseudomonas aeruginosa</i>	Not detected	Yes
40	Patient specimen fluid	<i>Staphylococcus aureus</i>	Not detected	Yes
41	Patient specimen fluid	<i>Staphylococcus aureus</i>	Not detected	Yes
42	Patient specimen tissue	<i>Streptococcus pneumoniae</i>	Not detected	Yes
43	Patient specimen fluid	<i>Streptococcus pneumoniae</i>	Not detected	Yes

570

571



572 **Table S2. Limit of detection**

Species	Replicates positive at 1 genome/reaction
<i>L. major</i>	4/4
<i>L. donovani</i>	2/2
<i>L. aethiopica</i>	6/6
<i>L. chagasi</i>	6/6
<i>L. tropica</i>	4/4
<i>L. panamensis</i>	6/6
<i>L. amazonensis</i>	4/4
<b>Total</b>	<b>32/32 (100%)</b>

573

574 **Table S3. Species identified by travel history**

575

Country	Travel history < 6 mo.	Travel history > 6 mo.	Travel history, timing not specified	Migration	Military	Species detected
<b>Central America</b>						
Belize	1					<i>L. mexicana</i> spp. complex (1)
Costa Rica	9		3			<i>L. guyanensis</i> spp. complex (11) <i>L. braziliensis</i> spp. complex (1)
Guatemala				1		<i>L. braziliensis</i> spp. complex (1)
Panama	1					<i>L. guyanensis</i> spp. complex (1)
Not otherwise specified			1			<i>L. guyanensis</i> spp. complex (1)
<b>North America</b>						
Mexico			1			<i>L. mexicana</i> (1)
<b>South America</b>						
Bolivia		1 <sup>A</sup>				<i>L. braziliensis</i> spp. complex (1)
Ecuador	2			1		<i>L. guyanensis</i> spp. complex (2) <i>L. lainsoni</i> (1)
Peru	1					<i>L. braziliensis</i> spp. complex (1)
Guyana		1				<i>L. braziliensis</i> spp. complex (1)
Venezuela				1		<i>L. guyanensis</i> spp. complex (1)
<b>Middle East</b>						

Afghanistan				1		<i>L. tropica</i> spp. complex (1)
Yemen	1					<i>L. tropica</i> spp. complex (1)
Africa						
Nigeria				1		<i>L. guyanensis</i> spp. complex (1)
Tunisia	1 <sup>B</sup>					<i>L. killicki</i> (1)
Other						
Travel noted, location unknown			1		1	<i>L. major</i> (1) <i>L. braziliensis</i> spp. complex (1)
Multiple endemic countries	1		1	2		<i>L. guyanensis</i> spp. complex (4)

576  
577  
578  
579  
580  
581  
582  
583  
584

<sup>A</sup> Patient had documented infection after traveling in 2016 and had relapse of mucocutaneous leishmaniasis in 2022.

<sup>B</sup> Patient lived in Tunisia prior to coming to the U.S. and developed infection after a recent return visit.

**Table S4. Repeat testing**

Category	# patients
585	
I. Multiple specimens negative	
a. 30+ days apart	3
b. Within 30 days	6
II. Multiple specimens positive within 30 days	
a. Different sites	4
b. Similar or same site	4
c. Unknown if sites are same or different	1
III. Initial positive specimen, subsequent negative specimen 30+ days later	3
IV. Multiple specimens positive 30+ days apart	1

Study Number <sup>1</sup>	Age	Sex	Species Identified	Location Acquired	Anatomic Site	Mini-Exon Sequence	Allele Comments
200jB	30-34	M	<i>L. braziliensis</i> spp. complex	Not provided	Skin, Arm	Lbr_B-04	
3NY5V	40-44	M	<i>L. braziliensis</i> spp. complex	Not provided	Skin, Foot	Lbr_E-01	Previously unreported
3pZcY	15-19	M	<i>L. guyanensis</i> spp. complex	Not provided	Skin, Leg	Lgu_F-01	Previously unreported
4AGIK	15-19	M	<i>L. mexicana</i> spp. complex	Not provided	Skin, Face	Lme_A-04	
4qXFx	60-64	M	<i>L. guyanensis</i> spp. complex	Not provided	Skin, Arm	Lgu_A-39	
4qXFx	60-64	M	<i>L. guyanensis</i> spp. complex	Not provided	Skin, Arm	Lgu_A-39	
4Tpmt	65-69	M	<i>L. guyanensis</i> spp. complex	Not provided	Skin, Leg	Lgu_A-39	
5d8uv	50-54	M	<i>L. guyanensis</i> spp. complex	Not provided	Skin, Arm	Lgu_A-39	
5N4y7	25-29	M	<i>L. guyanensis</i> spp. complex	Not provided	Skin, Back	Lgu_E-02	
6DvUz	25-29	M	<i>L. guyanensis</i> spp. complex	Not provided	Skin, Hand	Lgu_D-03	
71Qur	30-34	M	<i>L. guyanensis</i> spp. complex	Not provided	Skin, Leg	Lgu_B-07	
7IE4E	25-29	M	<i>L. guyanensis</i> spp. complex	Costa Rica	Skin, Leg	Lgu_A-39	
7nBtA	30-34	M	<i>L. guyanensis</i> spp. complex	Not provided	Skin, Face	Lgu_C-03	Previously unreported
9s3Zi	20-24	M	<i>L. mexicana</i> spp. complex	Not provided	Skin, Leg	Lme_B-03	
A1UVR	50-54	F	<i>L. guyanensis</i> spp. complex	Costa Rica	Skin, Hand	Lgu_A-39	
aFZBo	50-54	M	<i>L. guyanensis</i> spp. complex	Nigeria	Skin, Leg	Lgu_B-07	
ahPNz	15-19	M	<i>L. guyanensis</i> spp. complex	Multiple endemic countries: Costa Rica OR Belize	Skin, Chest	Lgu_A-39	
ahPNz	15-19	M	<i>L. guyanensis</i> spp. complex	Multiple endemic countries: Costa Rica OR Belize	Skin, Elbow	Lgu_A-39	
aNewR	5-9	F	<i>L. major</i>	Not provided	Skin, NOS	Lma_B-01	
ASuG7	55-59	M	<i>L. guyanensis</i> spp. complex	Costa Rica	Skin, Leg	Lgu_A-39	
Bb1ZK	50-54	F	<i>L. mexicana</i> spp. complex	Not provided	Skin, Leg	Lme_B-03	

bJ2RQ	65-69	M	L. guyanensis spp. complex	Not provided	Skin, NOS	Lgu_C-03	Previously unreported
bVQ6L	5-9	M	L. tropica spp. complex	Afghanistan	Skin, Face	Ltr_A-01	Previously unreported
bz3MQ	25-29	M	L. guyanensis spp. complex	Costa Rica	Skin, NOS	Lgu_A-39	
cvuHr	40-44	U	L. lainsoni	Ecuador	Skin, Arm	Lla_A-01	Previously unreported
dDNho	< 5	M	L. tropica spp. complex	Not provided	Skin, Face	Ltr_H-01	Previously unreported
dl8Uh	< 5	F	L. guyanensis spp. complex	Panama	Skin, Leg	Lgu_A-39	
dOJ9R	35-39	M	L. braziliensis	Not provided	Skin, Knee	Lbr_F-01	Type 2 L. braziliensis
DqThk	< 5	F	L. mexicana spp. complex	Not provided	Skin, Face	Lme_D-01	Previously unreported
dxbWJ	20-24	M	L. guyanensis spp. complex	Not provided	Skin, Arm	Lgu_A-39	
gdTX9	25-29	M	L. tropica spp. complex	Not provided	Skin, Hand	Ltr_B-01	Previously unreported
gSFeb	45-49	M	L. guyanensis spp. complex	Costa Rica	Skin, NOS	Lgu_A-39	
hliza	40-44	M	L. guyanensis spp. complex	Not provided	Skin, NOS	Lgu_D-03	
HswPn	>80	M	L. guyanensis spp. complex	Not provided	Skin, Arm	Lgu_A-39	
ifG7T	75-79	M	L. braziliensis spp. complex	Costa Rica	Skin, Leg	Lbr_B-04	
j5uY1	30-34	M	L. braziliensis spp. complex	Bolivia	Mucosa, Nasal	Lbr_A-06	
JD1Fi	35-39	F	L. guyanensis spp. complex	Costa Rica	Skin, Arm	Lgu_A-39	
JfPzu	35-39	M	L. guyanensis spp. complex	Not provided	Skin, Face	Lgu_A-39	
JfPzu	35-39	M	L. guyanensis spp. complex	Not provided	Skin, Face	Lgu_A-39	
KaEnn	25-29	M	L. braziliensis spp. complex	Not provided	Skin, Nose	Lbr_B-04	
L7liP	40-44	M	L. braziliensis spp. complex	Guatemala	Skin, Nose	Lbr_C-01	Previously unreported
lqj5v	10-14	F	L. braziliensis spp. complex	Not provided	Mucosa, Nasal	Lbr_A-06	
LY4kh	25-29	F	L. guyanensis spp. complex	Not provided	Skin, Leg	Lgu_A-39	
mj7LX	15-19	F	L. guyanensis spp. complex	Costa Rica	Skin, Knee	Lgu_A-39	
MNaNr	25-29	M	L. guyanensis spp. complex	Not provided	Skin, Leg	Lgu_A-39	
MnFJU	20-24	F	L. braziliensis spp. complex	Not provided	Skin, Face	Lbr_J-01	
MQ3Iq	30-34	M	L. guyanensis spp. complex	Not provided	Skin, Leg	Lgu_A-39	
MqS1M	< 5	F	L. tropica spp. complex	Not provided	Skin, Face	Ltr_J-01	
N58sC	30-34	M	L. braziliensis spp. complex	Not provided	Skin, NOS	Lbr_A-06	

Ngbt9	10-14	F	L. tropica spp. complex	Not provided	Skin, Face	Ltr_F-01	Previously unreported
nhxid	60-64	F	L. braziliensis spp. complex	Not provided	Skin, Face	Lbr_A-06	
nLIzV	5-9	F	L. tropica spp. complex	Yemen	Skin, Nasal	Ltr_D-01	Previously unreported
OkKEs	45-49	F	L. guyanensis spp. complex	Costa Rica	Skin, Leg	Lgu_A-39	
OkKEs	45-49	F	L. guyanensis spp. complex	Costa Rica	Skin, Leg	Lgu_A-39	
oYo7a	40-44	F	L. guyanensis spp. complex	Costa Rica	Skin, Face	Lgu_A-39	
pae2	25-29	U	L. guyanensis spp. complex	Not provided	Skin, NOS	Lgu_B-07	
pmg22	40-44	M	L. tropica spp. complex	Tunisia	Skin, Arm	Ltr_G-01	
PRu3I	35-39	M	L. guyanensis spp. complex	Costa Rica	Skin, Arm	Lgu_I-01	
PRu3I	35-39	M	L. guyanensis spp. complex	Costa Rica	Skin, Ear	Lgu_H-01	Previously unreported
q6Y0m	30-34	F	L. mexicana spp. complex	Belize	Skin, Arm	Lme_A-04	
qljLb	70-74	M	L. guyanensis spp. complex	Not provided	Skin, Buccal	Lgu_A-39	
QIW8W	55-59	F	L. guyanensis spp. complex	Not provided	Skin, Arm	Lgu_A-39	
QsNa7	70-74	U	L. mexicana spp. complex	Mexico (Yucatan)	Skin, Arm	Lme_A-04	
QsNa7	70-74	M	L. mexicana spp. complex	Mexico (Yucatan)	Skin, Arm	Lme_A-04	
r7Bif	75-79	M	L. guyanensis spp. complex	Ecuador	Skin, Ear	Lgu_G-01	Previously unreported
r7Bif	75-79	M	Leishmania sp, NOS	Ecuador	Skin, Face	Lsp_A-01	Previously unreported
rHGuZ	35-39	F	L. guyanensis spp. complex	Not provided	Skin, Arm	Lgu_A-39	
rUtEq	10-14	F	L. guyanensis spp. complex	Venezuela	Skin, Leg	Lgu_B-07	
RZyXs	40-44	M	L. donovani/infantum/chagasi spp. complex	Not provided	Lymph Node, inguinal	Ldo_A-01	
SHAjS	25-29	M	L. tropica spp. complex	Not provided	Skin, NOS	Ltr_C-01	Previously unreported
SrbZI	35-39	M	L. guyanensis spp. complex	Not provided	Skin, Face	Lgu_J-01	
tnbbZ	35-39	M	L. guyanensis spp. complex	Multiple endemic countries: Panama OR Honduras OR Nicaragua OR Colombia OR Guatemala	Skin, Hand	Lgu_B-07	

U19Vi	10-14	M	L. guyanensis spp. complex	Not provided	Skin, Hand	Lgu_A-39	
uf2WQ	60-64	F	L. braziliensis spp. complex	Not provided	Skin, Hand	Lbr_I-01	Previously unreported
UMVeK	45-49	M	L. braziliensis spp. complex	Not provided	Mucosa, Tonsil	Lbr_D-01	
UMVeK	45-49	M	L. braziliensis spp. complex	Not provided	Mucosa, Epiglottis	Lbr_H-01	Reported once, from Suriname
UrDnb	45-49	F	L. guyanensis spp. complex	Not provided	Skin, Face	Lgu_A-39	
usKjM	35-39	F	L. guyanensis spp. complex	Not provided	Skin, Arm	Lgu_A-39	
usKjM	35-39	F	L. guyanensis spp. complex	Not provided	Skin, Hand	Lgu_A-39	
viGq0	70-74	M	L. braziliensis spp. complex	Not provided	Skin, Hand	Lbr_B-04	
VPME3	60-64	M	L. mexicana spp. complex	Not provided	Skin, Face	Lme_C-01	
vtbyX	50-54	M	L. guyanensis spp. complex	Not provided	Skin, Leg	Lgu_A-39	
VXYJc	35-39	M	L. guyanensis spp. complex	Not provided	Skin, NOS	Lgu_A-39	
VXYJc	35-39	M	L. guyanensis spp. complex	Not provided	Skin, Arm	Lgu_A-39	
W2523	45-49	F	L. guyanensis spp. complex	Not provided	Skin, Arm	Lgu_K-01	Previously unreported
WdF6F	25-29	M	L. major	Not provided	Skin, Leg	Lma_A-01	
wNI9E	40-44	F	L. guyanensis spp. complex	Not provided	Skin, Elbow	Lgu_C-03	Previously unreported
WPNzg	60-64	M	L. guyanensis spp. complex	Central America	Skin, Back	Lgu_E-02	
XATsT	5-9	F	L. guyanensis spp. complex	Ecuador	Skin, Arm	Lgu_A-39	
XEnxF	< 5	M	L. tropica spp. complex	Not provided	Skin, Face	Ltr_I-01	Previously unreported
XkSqR	50-54	M	L. guyanensis spp. complex	Multiple endemic countries: Panama OR Mexico	Skin, Knee	Lgu_B-07	
XpFLs	65-69	M	L. mexicana spp. complex	Not provided	Skin, Face	Lme_B-03	
yfxW2	60-64	M	L. braziliensis spp. complex	Not provided	Skin, Arm	Lbr_A-06	
YfZoO	< 5	F	L. guyanensis spp. complex	Not provided	Skin, Knee	Lgu_B-07	
YHq5X	45-49	F	L. tropica spp. complex	Not provided	Skin, Chest	Ltr_E-01	
yqwx6	55-59	F	L. mexicana spp. complex	Not provided	Skin, Leg	Lme_E-01	Previously unreported
YRcvQ	25-29	M	L. guyanensis spp. complex	Not provided	Skin, Leg	Lgu_A-39	

yv1zu	5-9	F	L. guyanensis spp. complex	Multiple endemic countries: Central & South America (including Amazon region)	Skin, Arm	Lgu_D-03	
zDVRa	40-44	M	L. major	Not provided (suspected)	Skin, Arm and Flank	Lma_C-01	
zNB0C	20-24	M	L. braziliensis	Peru	Skin, Foot	Lbr_G-01	Type 2 L. braziliensis
zOa4f	35-39	F	L. guyanensis spp. complex	Not provided	Skin, Hand	Lgu_A-39	
zr4An	55-59	M	L. guyanensis spp. complex	Costa Rica	Skin, Leg	Lgu_A-39	
zSazm	25-29	F	L. guyanensis spp. complex	Not provided	Skin, Hand	Lgu_A-39	
VmHYS	65-69	M	L. braziliensis spp. complex	Guyana	Mucosa, Oropharynx	Lbr_A-06	

587 <sup>1</sup>Study number is a random 6-digit alphanumeric string which provides a unique, anonymous key for each patient.