

1 **Title:** Child stunting from birth to age two years: The Birhan Cohort in Ethiopia.

2
3 Frederick G. B. Goddard, MS PhD^{a*}, Bezawit Mesfin Hunegnaw, MD MPH^{b*}, Jonathan Luu,
4 MS^c, Sebastien Haneuse, PhD^c, Mesfin Zeleke, MD MPH^d, Yahya Mohammed, BSc^d,
5 Chalachew Bekele, BSc MPH^d, Daniel Tadesse, BSc MPH^d, Meles Solomon, BSc MSc^e, ,
6 Delayehu Bekele, MD MPH^{a,f}, Grace J. Chan, MD MPH PhD^{a,b,g}

7
8 **Affiliations:**

9 ^a Department of Epidemiology, Harvard T.H. Chan School of Public Health, Boston, MA, USA;

10 ^b Department of Pediatrics and Child Health, St. Paul's Hospital Millennium Medical College,
11 Addis Ababa, Ethiopia;

12 ^c Department of Biostatistics, Harvard T.H. Chan School of Public Health, Boston, MA, USA;

13 ^d Birhan HDSS, St. Paul's Hospital Millennium Medical College, Addis Ababa, Ethiopia

14 ^e Maternal, Child and Adolescent health lead executive office, Federal Ministry of Health,
15 Ethiopia

16 ^f Department of Obstetrics and Gynecology, St. Paul's Hospital Millennium Medical College,
17 Addis Ababa, Ethiopia;

18 ^g Division of Medicine Critical Care, Boston Children's Hospital, Department of Pediatrics,
19 Harvard Medical School, Boston, MA, USA.

20 * Contributed equally as co-first authors

21
22 **Address correspondence to:**

23 Grace J. Chan, MD MPH PhD

24 677 Huntington Ave, Boston, MA 02115

25 617-432-3422

26 grace.chan@hsph.harvard.edu

27
28 **Short title:** Child stunting from birth to age two years in Ethiopia

29
30 **Conflict of Interest Disclosures:** The authors have no conflicts of interest relevant to this article
31 to disclose.

32
33 **Funding/Support:** This study has been supported by the Bill & Melinda Gates Foundation
34 (Grant number INV-010382 and INV-003612).

35
36 **Abbreviations:**

37 SDGs: Sustainable Development Goals

38 MCH: Maternal Child Health

39 LAZ: Length-for-Age Z-score

40 WHO: World Health Organization

41 AIC: Akaike Information Criteria

42 BIC: Bayesian Information Criteria

43 EDHS: Ethiopia Demographic and Health Survey

44
45 **Article Summary:**

46 Through longitudinal anthropometry data from birth to two years of age, we provide rigorous
47 evidence on the burden, incidence and reversal pattern of childhood stunting.
48

49 **What is Known on This Subject**

50 There is a high prevalence of childhood stunting in Ethiopia. Prior studies show high spatial
51 heterogeneity with highest prevalence in the Amhara region. Ethiopia aims to reduce stunting in
52 children under 5 to meet global targets but remains off track.
53

54 **What This Study Adds**

55 We provide longitudinal data and modeled trajectories to describe patterns of linear growth and
56 onset of growth faltering or recovery. The evidence generated serves as critical input to meet
57 national and global targets of ending malnutrition.
58

59 **Contributors Statement Page**

60
61 Dr Frederick G. B. Goddard conceptualized and designed the study, curated the data, carried out
62 the initial analyses and interpretation of data, drafted the manuscript and critically reviewed and
63 revised the manuscript for important intellectual content.
64

65 Dr Bezawit M. Hunegnaw conceptualized and designed the study, designed the data collection
66 instruments, supervised data collection, contributed to analyses and interpretation of data, drafted
67 the manuscript and critically reviewed and revised the manuscript for important intellectual
68 content.
69

70 Dr Sebastien Haneuse and Jonathan Luu contributed to analysis and interpretation of data, and
71 critically reviewed and revised the manuscript for important intellectual content.
72

73 Dr Mesfin Zeleke, Yahya Mohammed, Chalachew Bekele and Daniel Tadesse contributed to the
74 design of data collection instruments, supervised data collection and critically reviewed and
75 revised the manuscript for important intellectual content.
76

77 Meles Solomon contributed to the interpretation of data and critically reviewed and revised the
78 manuscript for important intellectual content.
79

80 Dr Delayehu Bekele oversaw study implementation, contributed to the design of data collection
81 instruments, critically reviewed and revised the manuscript for important intellectual content.
82

83 Dr Grace J. Chan obtained funding, conceptualized and designed the study, contributed to
84 analyses and interpretation of data, and critically reviewed and revised the manuscript for
85 important intellectual content.
86

87 All authors approved the final manuscript as submitted and agree to be accountable for all
88 aspects of the work.
89

90

91 **ABSTRACT:**

92
93
94
95
96
97
98
99
100
101
102
103
104
105
106
107
108
109
110
111
112
113
114
115
116
117
118
119

Objective:

Although there has been a reduction in stunting (low height/length for age), the prevalence of malnutrition in Ethiopia is still high. Child growth patterns and estimates of stunting are needed to determine vulnerabilities and potential for recovery. We collected longitudinal data to determine the prevalence, incidence and reversal of stunting among children aged 0-24 months.

Methods:

We conducted a cohort study of 4,354 children between December 2018 and November 2020 in the Birhan maternal and child health cohort in North Shewa Zone, Amhara Ethiopia. Children who had their length measured at least once were included in this study.

Results:

Among the 4,354 children enrolled, 3,674 (84.4%) were included. Our findings indicate that median population-level length is consistently below global standards from birth to age two. Growth velocity was slowest compared to global standards during the neonatal period and after children reached six months of age. The observed prevalence of stunting was highest at age two (57.9%). Incidence of stunting increased over time and reversal was highest between the ages of birth to six months. We found substantial heterogeneity in anthropometric measurements, which we addressed by fitting modeled growth trajectories for each child.

Conclusion:

Overall, the evidence from this study highlights a chronically malnourished population with much of the burden driven by growth faltering during the neonatal periods as well as after 6 months of age. To end all forms of malnutrition, growth faltering in populations such as that in young children in Amhara, Ethiopia needs to be addressed.

120 INTRODUCTION

121

122 One central theme of the United Nations Sustainable Development Goals (SDGs) is child
123 development, including Goals 2 and 4 that aim to end hunger and improve education.¹

124 Nutritional status plays a major role in reaching these goals, because it is associated with both
125 physical and cognitive development.² Malnutrition continues to be a major public health problem
126 and is the most important underlying risk factor for illness and death, particularly in low-income
127 countries and among young children.³ An estimated 53% of all deaths in children under the age
128 of five are associated with malnutrition.⁴ Target 2.2. under Goal 2 of the SDGs set out to end all
129 forms of malnutrition by 2030, including meeting targets on stunting in children under five by
130 2025.⁵ Stunting is defined as low length/height-for-age and indicates chronic undernutrition.⁶
131 Stunting is considered to be an important indicator for both child physical and cognitive
132 development,⁷ and is strongly associated with environmental factors, such as living conditions
133 and nutrition.⁸ In 2019, an estimated 144 million (21%) children under 5 globally were stunted.⁹

134

135 To meet the SDGs and end all forms of malnutrition, a wealth of evidence has been generated to
136 understand how and when to intervene. A recent collection of research by the *ki* Child Growth
137 Consortium that combined anthropometric data from over 100,000 children enrolled in 35
138 longitudinal cohorts across 15 low- and middle-income countries found that the incidence of
139 stunting peaks early between birth and three months.^{10,11} Recovery from stunting was rare, with
140 only 5% of children reversing their stunting status any given month.¹¹ The prevalence of child
141 stunting in sub-Saharan Africa remains high, including in Ethiopia.¹² Although there has been a
142 reduction in stunting over the last two decades, in 2016, an estimated 38% of children under 5 in

143 Ethiopia were stunted.¹³ There is high spatial heterogeneity of stunting within Ethiopia¹⁴, with
144 the highest prevalence of stunting occurring in the Amhara region.¹⁵ As part of the World Health
145 Assembly global nutrition targets, Ethiopia aims to reduce stunting in children under 5 to 27% by
146 2025 with an expected average annual reduction rate of 6%.^{16,17} Current estimates show that the
147 country is off track following an average annual reduction rate of only 2.4%.¹⁸

148

149 To achieve these goals, rigorous studies that not only describe the magnitude of the problem but
150 also the dynamics of growth and changes through childhood are imperative. Accurate depiction
151 of the growth process that includes analysis of growth trajectories and patterns among
152 populations and subgroups is critical to understanding and identifying key time points that
153 predispose children to growth faltering. There are limited longitudinal data on stunting,
154 particularly from underserved populations in low resource settings. While the recent studies by
155 the *ki* Child Growth Consortium included large, pooled datasets of longitudinal anthropometric
156 data, they did not include data from Ethiopia. Infants less than 6 months are often excluded from
157 nutrition surveys and marginalized in nutrition programs,¹⁹ even though this time period is
158 characterized not only by maximal growth velocity but also by vulnerability to nutrition related
159 events and insults. The Birhan maternal and child health (MCH) cohort in Amhara, Ethiopia, can
160 fill some of these gaps, with longitudinal anthropometry data from birth until the child reaches
161 their second birthday.²⁰

162

163 **METHODS**

164

165 **Study design**

166 This study was nested within the Birhan field site, which includes 16 villages in Amhara Region,
167 Ethiopia, covering a mid-year population of 77,766. The site is a platform for community and
168 facility-based research and training that was established in 2018, with a focus on maternal and
169 child health.²¹ Nested in the site is an open pregnancy and birth cohort, the Birhan Maternal and
170 Child Health (MCH) cohort, that enrolls approximately 2,000 pregnant women and their
171 newborns per year with longitudinal follow-up over the first two years of life and household data
172 linked with health facility information.²⁰

173

174 **Study population**

175 The study population consists of children enrolled in MCH between December 2018 and
176 November 2020, through both a birth and non-birth cohort. The birth cohort included children
177 whose mothers were enrolled during their pregnancy and the child was enrolled at birth. The
178 non-birth cohort includes children that were enrolled after birth at different ages before reaching
179 their second birthday. Children enrolled to the study were followed through age 2.

180

181 **Data collection**

182 Custom length board, standardized against the infant/child ShorrBoard (Weigh and Measure,
183 LLC) was used for length measurements during household visits and Seca 417 infantometer was
184 used in the health facilities. Measurement using both models of length measuring devices was
185 recorded to the nearest 0.1cm. Length was measured during child follow-up that was conducted
186 with scheduled visits at birth, on days six, 28 and 42 after birth and at age six, 12 and 24 months,
187 as well as by abstracting facility charts from non-scheduled healthcare-seeking visits (i.e.
188 outpatient visits or hospital admissions).

189

190 **Outcomes**

191 The primary outcome of the study was stunting, defined as length-for-age Z-score (LAZ) < -2
192 SD. We generated length-for-age (LAZ), with length, age and sex data using WHO growth
193 standards.²² Z-scores were used to determine the prevalence, incidence and reversal of stunting at
194 each key time point. INTERGROWTH-21 standards were used to generate LAZ scores at birth
195 and during the neonatal period.^{23,24} INTERGROWTH-21 standards were generated using data
196 from low- and middle-income countries and adjust for gestational age at birth, in contrast to
197 WHO standards that assume all babies are born at 40 weeks gestation and hence can
198 overestimate stunting prevalence at birth and during the neonatal period. We excluded
199 anthropometric measurements if 1) their Z-scores fell outside the biologically plausible range
200 defined by the WHO: LAZ < -6 or > 6; or 2) they were abstracted from facility charts after birth,
201 since these measurements were not validated by our data collectors. We compared the median
202 length of children enrolled in the Birhan cohort to World Health Organization (WHO) global
203 growth standards²² at key time points. Growth velocity was determined in cm/month between
204 key time points and compared to global WHO standards for the same time periods.²⁵

205

206 Key time points were defined as birth, four weeks (end of the neonatal period), six weeks, six
207 months, 12 months, and 24 months. Birth length measurements were defined as those that were
208 collected within the first week of life. For measurements at the end of the neonatal period and at
209 six weeks, we included those taken at four weeks and six weeks (+/- one week), respectively,
210 after birth. For the other key time points (six, 12 and 24 months) we included measurements
211 taken within four weeks of each time point.

212

213 **Statistical analysis**

214 Empirical length measurements were stratified by sex to describe population median (IQR)
215 length at birth, four weeks (end of the neonatal period), six weeks, six months, 12 months and 24
216 months of age. Differences in medians between key time points were used to calculate monthly
217 growth velocity. Medians at each key time point and velocities between key time points were
218 then compared to WHO standards. For incidence calculations, the sample population for each
219 time period (defined as two adjoining key time points) was defined as all children that were at
220 risk of stunting (i.e. not already stunted by the beginning of that time period) and have available
221 anthropometric measurements between two adjoining key time points. Similarly, for reversal, the
222 sample population for each time period was defined as all children that had the chance of
223 reversing their stunting (i.e. already stunted by the beginning of that time period) and have
224 available anthropometric measurements at the beginning and end of the time period. To expand
225 on our incidence and reversal analysis, we calculated incidence and reversal both sequentially
226 (i.e. comparing birth to four weeks, then four weeks to six weeks) and using birth as a baseline
227 (i.e. comparing birth to 4 weeks, then birth to 6 weeks).

228

229 To consider potential measurement error for length in our findings, we used a mixed effects
230 model to determine potential outliers that should be removed from the analysis. Using LASSO
231 regression to determine significant covariates to include in the models, we considered six
232 different models that used a mix of fixed and random age variables and intercepts, quadratic
233 splines, and piecewise-linear splines. Our final model included a piecewise-linear spline of age
234 for the fixed effect, and an intercept and slope of standardized age for the random effects. We

235 determined this model was the best fit after comparing AIC, BIC, and deviance diagnostic
236 criteria. Using the predicted outcomes and estimated standard deviation from the model, we
237 removed observed points that were not within 1.5 standard deviations of fitted trajectories. After
238 these measurements were removed from the dataset, prevalence, incidence, and reversal
239 estimates were re-calculated. Confidence intervals for all proportion estimates were calculated
240 using the Agresti-Coull method. All analyses were completed in R Version 4.2.3.²⁶

241

242 **RESULTS**

243 We enrolled 4,354 children under the age of two into the MCH cohort study, among which 3,674
244 (84.4%) had their length measured at least once and were included in this study (Table 1).

245 Among children included, 82.7% resided in rural areas and 48.7% were female. Among included
246 children with gestational age and birth weight data, 15.3% were born preterm and 9.0% low
247 birthweight. Over the course of the study, length measurements were taken 2.6 times on average
248 for each child, ranging from one to eight measurements for length. Length measurements were
249 clustered around the scheduled follow-up visits (Figure 1).

250

251 Median length was lower in the study population compared to global WHO standards at all key
252 time points defined for this study, namely birth, the end of the neonatal period (four weeks), at
253 six weeks, and at six, 12 and 24 months (Table 2). The difference was smallest at birth (-0.1cm
254 for girls and -0.9cm for boys), with a slower monthly growth velocity compared to WHO
255 standards thereafter that was most pronounced during the neonatal period (-1.4 and -
256 1.6cm/month) . After the neonatal period, the difference in growth velocity was smaller for girls
257 between weeks four and six and between weeks six and six months (-0.7 and -0.2cm/month).

258 There was no difference in growth velocity for boys in the MCH cohort compared to WHO

259 standards between the end of the neonatal period and age six weeks. Differences in growth
260 velocity were between -0.2 and -0.3cm/month thereafter, resulting in the largest difference
261 between median length in the MCH cohort study compared to WHO standards by age two (-6.6
262 and -7.6cm).

263

264 We investigated the potential effects of measurement error in our data and found variation in
265 longitudinal length measurement for some individuals. To determine which points to exclude in a
266 repeated prevalence, incidence and reversal analysis, we compared the fitted trajectories for each
267 individual with observed data points. Observed lengths that were 1.5 standard deviations away
268 from fitted growth trajectories (n=922) were removed from the modeled prevalence, incidence,
269 and reversal analysis (Figure 2 and Table 3).

270

271 Using observed data, the prevalence of stunting at birth was 16.5% and showed a gradual
272 increase with a sharp rise from the age of 6 to 24 months reaching an observed prevalence of
273 57.9% among two-year-olds. Observed prevalences from the Birhan data were higher than
274 modeled values at birth and at 6 months, and similar at other key time points(Figure 3).

275

276 The incidence, indicating that children were newly stunted at a given key time point compared to
277 the previous time point, followed a similar pattern to the prevalence except for the 6-week
278 timepoint (Figure 4). Among all newborns who were not stunted at birth, 24.4% experienced
279 observed incident stunting within the first month of life. The highest incidence of cases was
280 observed between the ages of 12 to 24 months (51.0%) followed by the 6 to 12 months period
281 (32.5%). Observed incidence estimates were, for the most part, higher than modeled. Further
282 analysis using birth as a common baseline timepoint shows a steady increase in incidence
283 through to the age of two years (Figure S1). Overall, among children who were not stunted at

284 birth, 38.6% had incident stunting at 1 year of age and 56.6% had new onset stunting by 2 years
285 of age.

286
287 The marked difference in incidence between two timepoints compared to difference in
288 prevalence among these same time points indicates the presence of a dynamic incidence and
289 reversal process through time. Rates of reversal (both sequentially when compared to a prior
290 time point and using birth as baseline) were highest by 6 months of age (Figure 5 and Figure S2).
291 Among children who were already stunted at birth and thus had a chance to reverse stunting later
292 in life, 64.1% were able to do so by 6 months of life and 61.5% reversed by the end of the first
293 year of life (Figure S2). By the age of two years, 45.3% of children who were stunted at birth
294 were no longer stunted.

295 296 **DISCUSSION**

297 Our findings provide evidence that median population-level length among children in our study
298 sample are consistently below global standards from birth to age two. Monthly growth velocity
299 was slowest compared to global standards during the neonatal period, before stabilizing until the
300 child reached six months of age and then slowing again thereafter. Incidence of stunting
301 followed a similar trajectory, suggesting an increasing incidence of newly stunted children over
302 time. Reversal of stunting was a frequent observation with the highest rate of reversal occurring
303 between the ages of birth to 6 months of age.

304
305 These findings suggest that among this study population, most loss in potential linear growth is
306 occurring during the neonatal period, and then again, after 6 months of age. An elevated burden
307 in malnutrition after 6 months was also documented in the 2016 Ethiopia Demographic and
308 Health survey (EDHS),¹³ and may be associated with household food insecurity, poor infant and

309 young child feeding practices, lack of food diversity and frequency as well as an increased
310 exposure to enteric pathogens and infectious diseases.²⁷⁻²⁹ The prevalence of stunting at age two
311 in our study was higher than the 2016 EDHS, which found a 47.2% prevalence of stunting
312 among children aged 0-59 months findings in the same region.¹⁵

313
314 Our stunting prevalence findings are consistent with those from the *ki* Child Growth Consortium,
315 that combined longitudinal anthropometric data from multiple cohorts, although did not include
316 data from Ethiopia, where a steady increase was observed in the prevalence of stunting until age
317 two.¹¹ However, in contrast to findings from the *ki* Child Growth Consortium, we found that
318 incidence of stunting in this population did not peak during the first three months of life, but
319 rather continued to increase throughout the first two years of life. Stunting reversal was much
320 higher in our study population, particularly early in life from birth to 6 and 12 months of age.
321 This may be reflective of the impact of various initiatives in place throughout the country to
322 effect reduction of stunting, which include nutritional interventions, improved health care access,
323 sanitation and education.³⁰ Additionally, the infancy period is also marked by the greatest
324 potential increment in linear growth, thereby presenting higher likelihood of favorable
325 interventions to effect reversal changes. However, the high prevalence and incidence of stunting
326 suggests that even when stunting status is reversed, a substantial number of children relapse.
327

328 This study also found evidence of within-child heterogeneity in longitudinal length
329 measurements that may be due to measurement error. Challenges associated with measuring
330 length among newborns, infants and toddlers have been well documented.^{31,32} In this study, we
331 excluded measurements that were not biologically plausible as defined by WHO standards. We

332 also developed modeled trajectories with previously validated methodologies using linear spline
333 multilevel models that have knots at key time points,^{33–35} to validate the observed prevalence,
334 incidence and reversal findings. Excluding outliers did not substantially alter prevalence,
335 incidence or reversal findings. Observed values were slightly higher than modeled estimates
336 especially in the earlier ages implying that our observations may have overestimated the
337 outcome, possibly related to difficulty in measuring length in the younger ages.

338

339 The findings of this study should be interpreted with its limitations in mind. We saw
340 heterogeneity of length measurements for individual children, both at the same time point and
341 across two time points. We were also limited in the number of measurements we had per child
342 and each child contributed a different number of observations to this analysis due to late
343 enrollments in the non-birth cohort, intermittently missed scheduled visits, differences in the
344 prevalence of unscheduled healthcare-seeking visits, or missing data from the pausing data
345 collection due to COVID-19. We also recognize that incidence and reversal events or relapses
346 may occur within a single longer study time frame, which may have been identified with shorter
347 time windows especially in the post infancy period. However, this study provides several
348 important contributions to the literature. It outlines longitudinal evidence on the burden, onset
349 and reversal of growth faltering in Amhara, Ethiopia, the region identified by the 2016 EDHS as
350 having the highest burden of malnutrition in the country.¹³ This study also provides evidence of
351 linear growth at birth and during the neonatal period, where available data are more limited.

352

353 Finally, there is growing recognition that growth faltering is a dynamic process with the burdens
354 of undernutrition not limited to those that pass the threshold for stunting at a defined point in

355 time.⁶ Instead, it is worth noting, that the evidence from this study suggests that this population is
356 chronically malnourished compared to global standards. To meet the SDGs and end all forms of
357 malnutrition, then growth faltering in populations such as that in children under the age of two in
358 North Shewa Zone, in Amhara, Ethiopia needs to be addressed.

359

360 **ACKNOWLEDGEMENTS**

361 We would like to thank all mothers and children who participated in the study and the
362 community of the Birhan field site. We are grateful for our partnership with the Ministry of
363 Health, St. Paul's Hospital Millennium Medical College, Amhara Regional Health Bureau, North
364 Shewa Zone Office, Angolela Tera and Kewet/Shewa Robit Woreda Health Offices and
365 catchment health facilities. We thank the data collectors, supervisors, coordinators and the
366 HaSET team for their significant contributions.

REFERENCES:

1. United Nations Department of Economic and Social Affairs. Transforming our world: the 2030 Agenda for Sustainable Development. Published online 2015.
2. Nyaradi A, Li J, Hickling S, Foster J, Oddy WH. The role of nutrition in children's neurocognitive development, from pregnancy through childhood. *Front Hum Neurosci.* 2013;7. doi:10.3389/fnhum.2013.00097
3. Muller O. Malnutrition and health in developing countries. *Can Med Assoc J.* 2005;173(3):279-286. doi:10.1503/cmaj.050342
4. Bryce J, Boschi-Pinto C, Shibuya K, Black RE. WHO estimates of the causes of death in children. *The Lancet.* 2005;365(9465):1147-1152. doi:10.1016/S0140-6736(05)71877-8
5. United Nations Department of Economic and Social Affairs. THE 17 GOALS | Sustainable Development. <https://sdgs.un.org/goals>
6. Wells JCK, Briand A, Boyd EM, et al. Beyond wasted and stunted—a major shift to fight child undernutrition. *Lancet Child Adolesc Health.* 2019;3(11):831-834. doi:10.1016/S2352-4642(19)30244-5
7. Grantham-McGregor S, Cheung YB, Cueto S, Glewwe P, Richter L, Strupp B. Developmental potential in the first 5 years for children in developing countries. *The Lancet.* 2007;369(9555):60-70. doi:10.1016/S0140-6736(07)60032-4
8. Reinhardt K, Fanzo J. Addressing Chronic Malnutrition through Multi-Sectoral, Sustainable Approaches: A Review of the Causes and Consequences. *Front Nutr.* 2014;1. doi:10.3389/fnut.2014.00013
9. UNICEF, WHO and the World Bank Group. Levels and trends in child malnutrition: Key findings of the 2020 edition of the Joint Child Malnutrition Estimates. Published online 2020.
10. Mertens A, Benjamin-Chung J, Colford JM, et al. *Child Wasting and Concurrent Stunting in Low- and Middle-Income Countries.* *Epidemiology*; 2020. doi:10.1101/2020.06.09.20126979
11. Benjamin-Chung J, Mertens A, Colford JM, et al. *Early Childhood Linear Growth Faltering in Low- and Middle-Income Countries.* *Epidemiology*; 2020. doi:10.1101/2020.06.09.20127001
12. Akombi B, Agho K, Hall J, Wali N, Renzaho A, Merom D. Stunting, Wasting and Underweight in Sub-Saharan Africa: A Systematic Review. *Int J Environ Res Public Health.* 2017;14(8):863. doi:10.3390/ijerph14080863
13. Ethiopia Demographic and Health Survey 2016. Published online 2016. <http://dhsprogram.com/pubs/pdf/FR328/FR328.pdf>
14. Local Burden of Disease Child Growth Failure Collaborators. Mapping child growth failure across low- and middle-income countries. *Nature.* 2020;577(7789):231-234. doi:10.1038/s41586-019-1878-8
15. Hailu BA, Bogale GG, Beyene J. Spatial heterogeneity and factors influencing stunting and severe stunting among under-5 children in Ethiopia: spatial and multilevel analysis. *Sci Rep.* 2020;10(1):16427. doi:10.1038/s41598-020-73572-5
16. Ethiopian Public Health Institute, Addis Ababa, Ethiopia. Reducing Stunting in Ethiopia: “From Promise to Impact.” Published online 2019. <https://ephi.gov.et/wp-content/uploads/2014/04/B-Stunting-policy-brief-full-report-05-23-19.pdf>

17. Laillou A, Baye K, Meseret Z, Darsene H, Rashid A, Chitekwe S. Wasted Children and Wasted Time: A Challenge to Meeting the Nutrition Sustainable Development Goals with a High Economic Impact to Ethiopia. *Nutrients*. 2020;12(12):3698. doi:10.3390/nu12123698
18. Global targets tracking tool. <https://www.who.int/tools/global-targets-tracking-tool>
19. Munirul Islam M, Arafat Y, Connell N, et al. Severe malnutrition in infants aged <6 months—Outcomes and risk factors in Bangladesh: A prospective cohort study. *Matern Child Nutr*. 2019;15(1). doi:10.1111/mcn.12642
20. Chan GJ, Hunegnaw BM, Van Wickle K, et al. Birhan maternal and child health cohort: a study protocol. *BMJ Open*. 2021;11(9):e049692. doi:10.1136/bmjopen-2021-049692
21. Bekele D, Hunegnaw BM, Bekele C, et al. Cohort Profile: The Birhan Health and Demographic Surveillance System. *Int J Epidemiol*. Published online November 9, 2021:dyab225. doi:10.1093/ije/dyab225
22. WHO Child Growth Standards. *Rev Chil Pediatr*. 2009;80(4). doi:10.4067/S0370-41062009000400012
23. Villar J, Ismail LC, Victora CG, et al. International standards for newborn weight, length, and head circumference by gestational age and sex: the Newborn Cross-Sectional Study of the INTERGROWTH-21st Project. *The Lancet*. 2014;384(9946):857-868. doi:10.1016/S0140-6736(14)60932-6
24. Villar J, Giuliani F, Bhutta ZA, et al. Postnatal growth standards for preterm infants: the Preterm Postnatal Follow-up Study of the INTERGROWTH-21 st Project. *Lancet Glob Health*. 2015;3(11):e681-e691. doi:10.1016/S2214-109X(15)00163-1
25. WHO. Length velocity. Accessed January 27, 2022. <https://www.who.int/tools/child-growth-standards/standards/length-velocity>
26. R Core Team. R: A Language and Environment for Statistical Computing. Published online 2021.
27. Psaki S, Bhutta ZA, Ahmed T, et al. Household food access and child malnutrition: results from the eight-country MAL-ED study. *Popul Health Metr*. 2012;10(1):24. doi:10.1186/1478-7954-10-24
28. Singh A, Singh A, Ram F. Household Food Insecurity and Nutritional Status of Children and Women in Nepal. *Food Nutr Bull*. 2014;35(1):3-11. doi:10.1177/156482651403500101
29. Paudel R, Pradhan B, Wagle R, Pahari D, Onta S. Risk Factors for Stunting Among Children: A Community Based Case Control Study in Nepal. *Kathmandu Univ Med J*. 2013;10(3):18-24. doi:10.3126/kumj.v10i3.8012
30. Tasic H, Akseer N, Gebreyesus SH, et al. Drivers of stunting reduction in Ethiopia: a country case study. *Am J Clin Nutr*. 2020;112:875S-893S. doi:10.1093/ajcn/nqaa163
31. Perumal N, Namaste S, Qamar H, Aimone A, Bassani DG, Roth DE. Anthropometric data quality assessment in multisurvey studies of child growth. *Am J Clin Nutr*. 2020;112:806S-815S. doi:10.1093/ajcn/nqaa162
32. Daymont C, Ross ME, Russell Localio A, Fiks AG, Wasserman RC, Grundmeier RW. Automated identification of implausible values in growth data from pediatric electronic health records. *J Am Med Inform Assoc*. 2017;24(6):1080-1087. doi:10.1093/jamia/ocx037
33. Howe LD, Tilling K, Matijasevich A, et al. Linear spline multilevel models for summarising childhood growth trajectories: A guide to their application using examples from five birth cohorts. *Stat Methods Med Res*. 2016;25(5):1854-1874. doi:10.1177/0962280213503925

34. Grajeda LM, Ivanescu A, Saito M, et al. Modelling subject-specific childhood growth using linear mixed-effect models with cubic regression splines. *Emerg Themes Epidemiol.* 2016;13(1):1. doi:10.1186/s12982-015-0038-3
35. Anderson C, Hafen R, Sofrygin O, Ryan L, members of the HBGDKi Community. Comparing predictive abilities of longitudinal child growth models. *Stat Med.* 2019;38(19):3555-3570. doi:10.1002/sim.7693

Table 1: Population summary characteristics

	N	n	%
Children enrolled	4354		
Children with length data available	4354	3674	84.4
Residing in rural areas	3674	3037	82.7
Female sex	3670	1786	48.7
Preterm births	2350	360	15.3
Low birth weight	1732	156	9.0
Singleton births	3674	3557	96.8
	N	Mean	SD (Min - Max)
Length measurements (#)	3674	2.6	1.6 (1 - 8)

Table 2: Length at key times points for girls and boys compared to WHO global standards

Girls	N	Median (IQR), cm MCH	Median, cm WHO	Difference , cm	Velocity, cm/month Birhan	Velocity, cm/month WHO	Difference , cm/month
Birth	882	49.0 (47.3-50.2)	49.1	-0.1			
4 weeks (end of neonatal period)	787	52.0 (50.0-54.0)	53.4	-1.4	3.3	4.7	-1.4
6 weeks	787	53.4 (51.5-55.6)	55.1	-1.7	3.0	3.7	-0.7
6 months	825	64.0 (61.5-66.2)	65.7	-1.7	2.3	2.5	-0.2
12 months	863	71.0 (68.0-73.5)	74	-3	1.2	1.4	-0.2
24 months	688	79.8 (76.4-83.0)	86.4	-6.6	0.7	1.0	-0.3

Boys	N	Median (IQR), cm MCH	Median, cm WHO	Difference , cm	Velocity, cm/month Birhan	Velocity, cm/month WHO	Difference , cm/month
Birth	938	49.0 (47.5-50.5)	49.9	-0.9			
4 weeks (end of neonatal period)	775	52.0 (50.0-54.3)	54.4	-2.4	3.3	4.9	-1.6
6 weeks	778	53.8 (52.0-56.0)	56.2	-2.4	3.9	3.9	0.0
6 months	830	65.0 (62.5-67.0)	67.6	-2.6	2.4	2.6	-0.2
12 months	906	72.0 (69.0-74.0)	75.7	-3.7	1.2	1.4	-0.2
24 months	733	80.0 (76.6-83.0)	87.8	-7.8	0.7	1.0	-0.3

Table 3: Number of observations

	Birth	Day 28	Day 42	6 months	12 months	24 months
Number of observations	2979	1565	1569	1669	1780	1422
Number of removed points	239	87	91	257	227	21
Number of observations after removal	2740	1478	1478	1412	1553	1401

Figure 1: Distribution of length measurements compared to WHO standards (boys and girls combined)

Figure 2: Datapoints kept and removed from dataset for modeled stunting

Figure 3: Prevalence of stunting

Figure 4: Incidence of stunting (sequential)

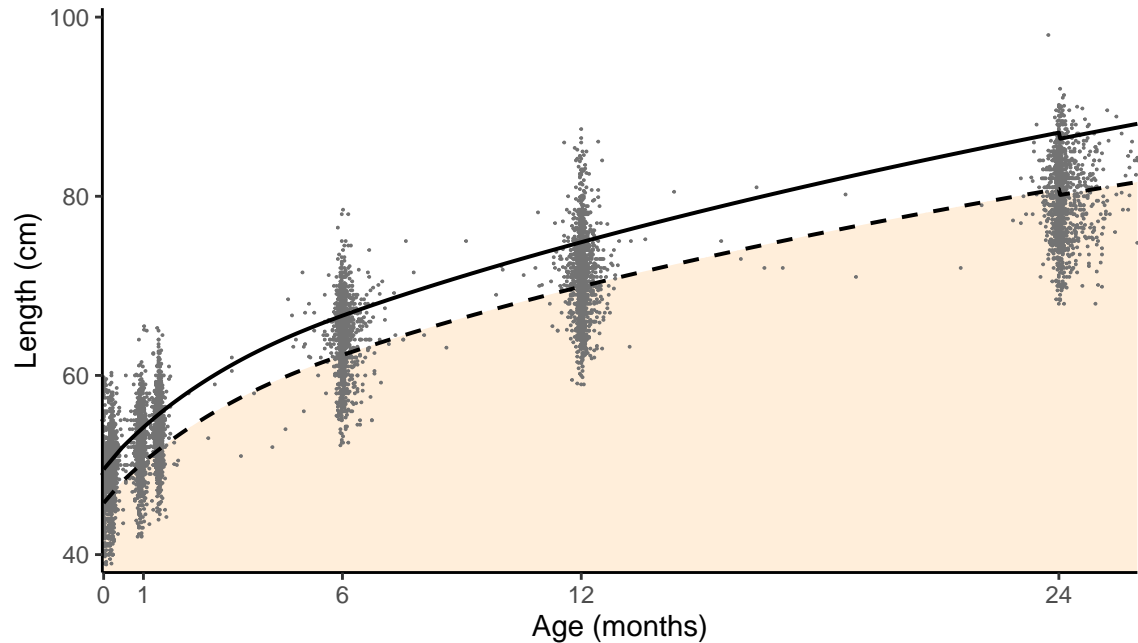
Figure 5: Reversal of stunting (sequential)

Supplementary material

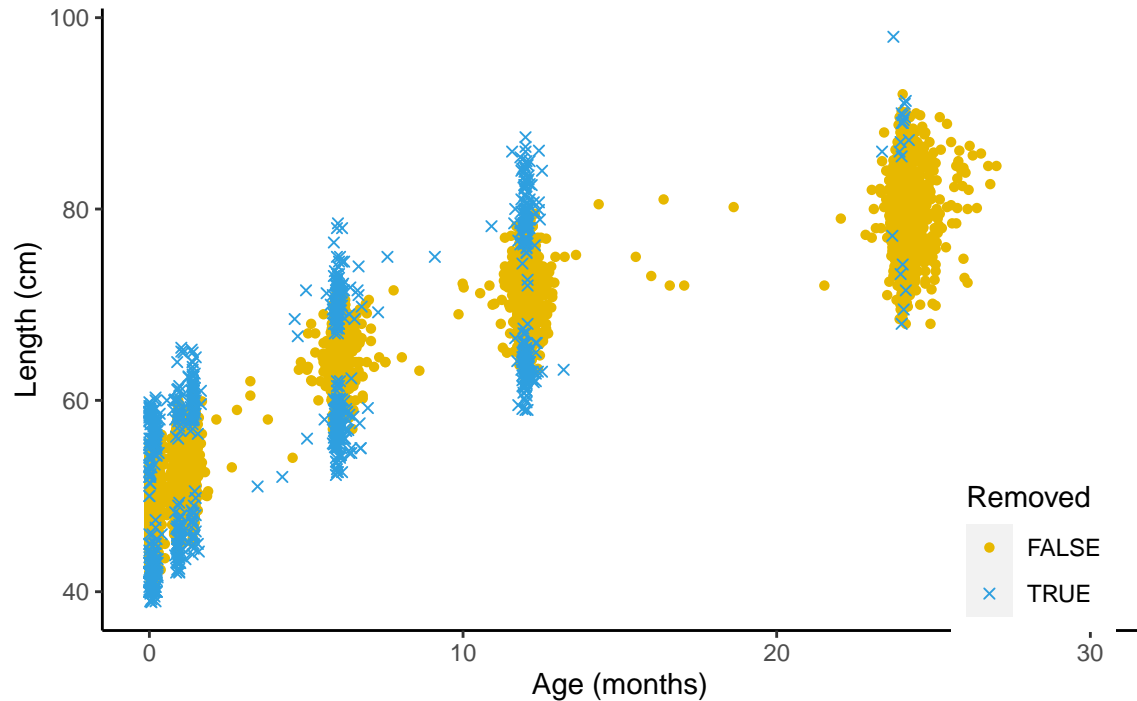
Figure S1: Incidence of stunting (birth as common baseline)

Figure S2: Reversal of stunting (birth as common baseline)

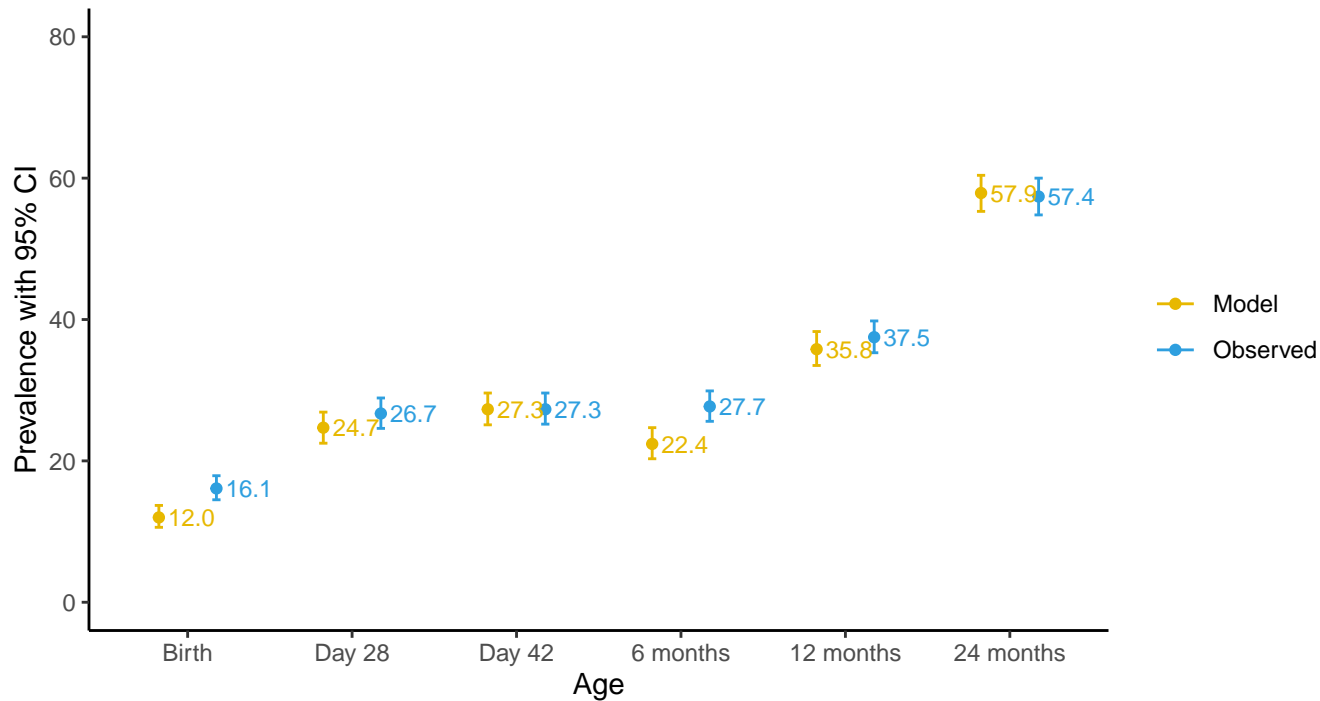
WHO Length-for-Age Standards - -2 SD — Median



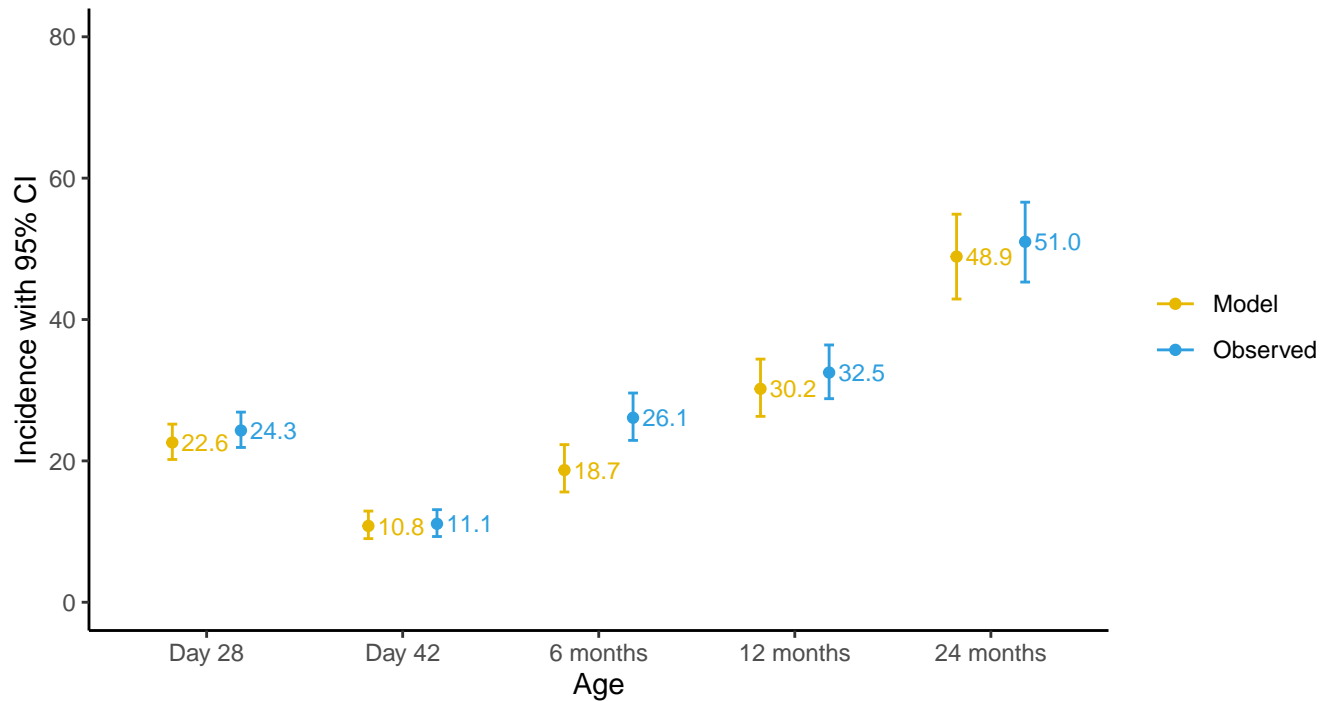
Removed dataset observations



Estimated prevalence of stunting



Estimated incidence of stunting (Sequential)



Estimated incidence of reversal (Sequential)

