

1 **Accuracy of digital chest x-ray analysis with artificial intelligence software as a triage and screening**
2 **tool in hospitalized patients being evaluated for tuberculosis in Lima, Peru.**

3
4 Amanda Biewer^{1*}, Christine Tzelios^{2*}, Karen Tintaya³, Betsabe Roman³, Shelley Hurwitz², Courtney
5 Yuen⁴, Carole D. Mitnick⁴, Edward Nardell⁴, Leonid Lecca³, Dylan B. Tierney^{4,5}, Ruvandhi R.
6 Nathavitharana¹

7
8 ¹ Beth Israel Deaconess Medical Center and Harvard Medical School, Boston, MA

9 ² Harvard Medical School, Boston, MA

10 ³ Socios en Salud, Lima, Peru

11 ⁴ Brigham and Women's Hospital and Harvard Medical School, Boston, MA

12 ⁵ Massachusetts Department of Public Health, Boston, MA

13 * contributed equally

14
15 **Abstract**

16 Introduction:

17 Tuberculosis (TB) transmission in healthcare facilities is common in high-incidence countries. Yet, the
18 optimal approach for identifying inpatients who may have TB is unclear. We evaluated the diagnostic
19 accuracy of qXR (Qure.ai, India) computer-aided detection (CAD) software versions 3 and 4 (v3 and
20 v4) as a triage and screening tool within the FAST (Find cases Actively, Separate safely, and Treat
21 effectively) transmission control strategy.

22
23 Methods:

24 We prospectively enrolled two cohorts of patients admitted to a tertiary hospital in Lima, Peru: one
25 group had cough or TB risk factors (triage) and the other did not report cough or TB risk factors
26 (screening). We evaluated the sensitivity and specificity of qXR for the diagnosis of pulmonary TB
27 using culture and Xpert as primary and secondary reference standards, including stratified analyses
28 based on risk factors.

29

30 Results:

31 In the triage cohort (n=387), qXRv4 sensitivity was 0.95 (62/65, 95% CI 0.87-0.99) and specificity was
32 0.36 (116/322, 95% CI 0.31-0.42) using culture as reference standard. There was no difference in the
33 area under the receiver-operating-characteristic curve (AUC) between qXRv3 and qXRv4 with either a
34 culture or Xpert reference standard. In the screening cohort (n=191), only one patient had a positive
35 Xpert result, but specificity in this cohort was high (>90%). qXR sensitivity did not differ stratified by
36 sex, age, prior TB, HIV, and symptoms. Specificity was higher in people without prior TB and people
37 with a cough for <2 weeks.

38

39 Conclusions:

40 qXR had high sensitivity but low specificity as a triage in hospitalized patients with cough or TB risk
41 factors. Screening patients without cough in this setting had a low diagnostic yield. These findings
42 further support the need for population and setting-specific thresholds for CAD programs.

43

44

45

46

47

48

49

50

51

52 **Introduction**

53 Diagnosis remains the largest gap in the tuberculosis (TB) cascade of care. In 2021, of the 10.6 million
54 people estimated to become sick due to TB, only 6.4 million were diagnosed and notified to national
55 notification systems¹. Efforts to increase and accelerate diagnoses are critical to prevent severe
56 disease, avert TB deaths, and halt ongoing transmission². Healthcare facilities are known hotspots for
57 TB transmission in high-incidence settings³⁻⁷. Globally, the rate of TB disease among healthcare
58 workers is estimated to be at least double that of the general adult population, suggesting significant
59 transmission in health facilities^{8,9}. The FAST (Find cases Actively, Separate safely, and Treat
60 effectively) strategy was developed to reduce TB transmission in healthcare settings, based on the
61 principle that most transmission occurs from patients with unsuspected and thus undiagnosed TB,
62 including drug-resistant strains¹⁰. FAST relies on identifying potentially infectious patients, typically
63 with cough screening, followed by rapid sputum-based molecular tests that include first line
64 resistance testing to enable prompt initiation of effective treatment^{7,10}. (1, 2) FAST has been
65 implemented in a variety of settings, including Peru, Bangladesh, Russia, and Vietnam¹¹⁻¹⁴. Given the
66 slow scale up of rapid molecular tests¹, due to barriers such as cost, optimizing screening approaches
67 for the FAST strategy is critical for its implementation success.

68

69 Triage is the process of making clinical decisions based on symptoms, signs, risk factors, or test
70 results¹⁵. Rapid and accurate triage tests play an important role in identifying patients requiring
71 further diagnostic evaluation among those with symptoms or risk factors for disease¹⁶. Screening
72 similarly involves non-diagnostic testing to distinguish between people who likely have the disease
73 from those who are unlikely to have the disease, typically in a population who do not have
74 symptoms¹⁵. There is a long history of using chest radiography (CXR) to screen for pulmonary TB, but

75 its utility in high TB incidence settings has been limited by the scarcity of skilled radiologists to
76 interpret images.¹⁷ The advent of digital radiography coupled with computer aided detection (CAD)
77 software eliminates this potential barrier, making it more feasible to implement CXR for triage or
78 screening in resource limited settings. CAD uses artificial intelligence algorithms to analyze
79 radiographs for abnormalities consistent with TB. CAD is now recommended by the World Health
80 Organization (WHO) as an alternative to human readers¹⁷. Nonetheless, while CAD sensitivity for both
81 triage and screening is typically >90%, CAD specificity varies widely, from 23%–66% for screening^{18–20}
82 and 25%–79% for triage^{18,21,22} when compared to a microbiological reference standard.

83

84 Questions remain regarding the optimal approach for using CAD to identify potentially infectious
85 people with TB, particularly in hospital settings. A retrospective case-control study evaluating CAD in
86 patients presenting with respiratory symptoms to a tertiary care hospital in India demonstrated
87 moderate sensitivity and specificity (71% and 80% respectively) for the detection of pulmonary TB²³.
88 However, TB prevalence surveys reveal a high proportion of people diagnosed with pulmonary TB
89 who do not report symptoms,²⁵ highlighting poor implementation and yield of symptom screening²⁴.
90 Moreover, many CAD studies have focused on triage of outpatients presenting with symptoms^{26–29};
91 although there are some examples of CAD screening programs that are not contingent on symptom
92 screening, these have been community-based^{30–33}.

93

94 The aim of this study was to evaluate the diagnostic accuracy of digital CXR with CAD software as a
95 tool for: 1) triage—among patients with cough or TB risk factors—and; 2) screening—among patients
96 without cough or TB risk factors—to identify admitted patients who should undergo molecular TB
97 testing in a tertiary care hospital in Lima, Peru.

98 **Methods**

99 Study design and participants

100 We conducted a cross-sectional diagnostic accuracy study that was embedded in a larger prospective
101 study evaluating FAST implementation at Hospital Nacional Hipolito Unanue (HNHU), a 700-bed
102 public, tertiary-care referral hospital in Lima, Peru (<https://clinicaltrials.gov/ct2/show/NCT02355223>).
103 Patients admitted to HNHU from January 2nd 2018 to December 31st 2019 were consecutively
104 screened by the FAST implementation team study staff using a standardized questionnaire upon
105 facility admission, as previously described¹¹. Two cohorts were enrolled for this diagnostic accuracy
106 sub-study. Eligible individuals were adults (≥ 18 years old) who, (upon questioning by the study
107 team), reported either: 1) cough of any duration and/or the following risk factors for TB: contact with
108 someone diagnosed with pulmonary TB, a current active TB diagnosis, or a history of prior active TB
109 (triage cohort); or 2) no cough or TB risk factors (screening cohort).

110

111 Ethics statement

112 The study was approved by the Institutional Review Boards of HNHU and Brigham and Women's
113 Hospital. Written informed consent was obtained from all patients. Participants were assigned a
114 unique study ID number, recorded on data collection forms and clinical specimens to facilitate data
115 linkage; names and other obvious identifiers were not used on data collection forms, thus authors did
116 not have access to information that could identify individual participants during or after data
117 collection.

118

119 Study procedures, data collection, and outcome classification

120 On the day of admission, patients in both cohorts who were admitted through the emergency room
121 underwent posterior-anterior digital CXR and study staff collected at least 2 sputum samples for TB
122 testing using smear microscopy, mycobacterial culture, Xpert MTB/RIF (Xpert, Cepheid, Sunnyvale,
123 CA), and/or GenoType MTBDRplus line probe assay. De-identified CXR images were electronically
124 transferred for automated analysis (blinded to other demographic and clinical data including the
125 results of other TB testing) by the developers of qXR (qure.ai, Mumbai, India) who ran versions 3.0
126 (v3) and 4.0 (v4) on all images. CXR was obtained prospectively but qXR results were not used to
127 guide clinical management. Information on socio-demographic and clinical variables including current
128 and prior TB history, co-morbidities, and microbiological test results, was collected at the time of
129 enrollment, or retrieved from the medical records using standardized case report forms. Culture and
130 Xpert results were classified separately as binary variables (positive or negative for *Mycobacterium*
131 *tuberculosis*). If a patient had more than one culture result and at least one or more were positive,
132 the binary result was classified as positive; the same applied to Xpert results.

133

134 Analyses

135 For our primary diagnostic accuracy analyses, the diagnosis of pulmonary TB in both the triage and
136 screening cohorts was established by the presence of a sputum culture that grew *Mycobacterium*
137 *tuberculosis*. For our secondary diagnostic accuracy analyses, the diagnosis of pulmonary TB in both
138 the triage and screening cohorts was established by the presence of a positive sputum Xpert result.
139 Analyses using qXRv4 are presented in the main manuscript and qXRv3 are presented in the
140 supplementary data. qXR sensitivity and specificity (with exact 95% C.I.s) for pulmonary TB were
141 calculated using the manufacturer's prespecified thresholds (0.5 for v3 and 0.65 for v4) per STARD
142 guidelines (see supplementary files)³⁴. DeLong's non-parametric method was applied to compare

143 differences between the areas under the receiver operating characteristic curve (AUC) for the two
144 qXR software versions. We also estimated the specificity at the threshold score at which sensitivity
145 was closest to 90% (WHO triage test minimum TPP recommended criteria)³⁵. Pre-specified sensitivity
146 analyses were designed to examine qXR accuracy when certain groups known to have increased risk
147 for TB were excluded: people with HIV, people with prior TB, and people with other respiratory
148 diseases (asthma or bronchiectasis).

149

150 Using Fisher's exact test, we assessed performance differences in prespecified groups with
151 characteristics or risk factors that may impact diagnostic test performance: male sex, older age, prior
152 TB, HIV co-infection, other respiratory disease co-morbidities, presence of TB symptoms in WHO
153 symptom screen (cough, fever, night sweats, weight loss), and higher-grade sputum smear result.
154 Analyses were completed using STATA/IC version 16 (StataCorp. 2019. Stata Statistical Software:
155 Release 16. College Station, TX: StataCorp LLC.).

156

157 **Results**

158 During the study period we enrolled 964 patients admitted to HNHU who had cough or TB risk
159 factors, of whom 489 underwent digital CXR in the triage cohort (Figure 1). Participants who were
160 taking anti-TB drugs or had taken them within one year of enrollment (n=50; 10%) were excluded as
161 were those who had no microbiological testing (n=20; 4%). We enrolled 220 individuals without
162 cough or TB risk factors in the screening cohort. Screening participants who were household contacts
163 of people who experienced TB were excluded (n=27; 13%) as were those who had no microbiological
164 testing (n=9; 4%).

165

166 Figure 1: Study Flow Diagram

167

168

169 **Triage cohort**

170 Demographics

171 Of the 419 participants in the triage cohort, 387 (93%) had a mycobacterial culture result; it was

172 positive in 65 (17%) participants, of whom 41 (63%) also had positive sputum-smear microscopy

173 results. In this cohort, 398 (95%) had an Xpert MTB/RIF result; it was positive in 69 (17%), of whom 39

174 (57%) had positive smear microscopy. Culture and Xpert results were largely concordant, although

175 Xpert was positive in some people who did not have culture or who had a negative culture (Table S1).

176 Compared to participants without TB (based on sputum culture results), participants with culture

177 confirmed TB were more likely to be younger, male, have a history of incarceration, report cough

178 longer than 2 weeks, fever, or weight loss, and not have a history of any respiratory diseases or a

179 prior history of TB (Table 1).

180

181 Table 1: Demographic and clinical characteristics of enrolled participants

182

	Triage Patients				Screening* Patients		
	Overall (n=419)	TB [^] (n=65)	No TB (n=322)	No Culture Performed (n=32)	P- value**	Overall (n=184)	P- value**
Median Age (years, interquartile range)	41.35 (26.8, 56.6)	35.34 (24.0, 48.6)	42.01 (27.5, 57.0)	44.68 (31.7, 63.3)	0.003	36.19 (25.19, 50.53)	0.015
Sex, No (%)					0.025		
Female	164 (39.1)	17 (26.1)	134 (41.6)	13 (40.6)		111 (60.3)	<0.001
Male	255 (60.9)	48 (73.9)	188 (58.4)	19 (59.4)		73 (39.7)	
History of Previous TB, No (%)					0.014		<0.001
Yes	140 (33.4)	13 (20.0)	114 (35.4)	13 (40.6)		0 (0.00)	
No	278 (66.4)	52 (80.0)	207 (64.3)	19 (59.4)		184 (100)	
Refused	1 (0.20)	0 (0.00)	1 (0.3)	0 (0.00)			
HIV, No (%)					0.635		<0.001
Yes	36 (8.6)	7 (10.8)	28 (8.7)	1 (3.1)		1 (0.5)	
No	383 (91.4)	58 (89.2)	294 (91.3)	31 (96.9)		183 (99.5)	

Smoking, No (%)							
Never	202 (48.2)	28 (43.0)	162 (50.3)	12 (37.5)	0.501	99 (53.8)	0.637
Former	161 (38.4)	30 (46.2)	116 (36.0)	15 (46.9)		51 (27.7)	
Current	56 (13.4)	7 (10.8)	44 (13.7)	5 (15.6)		34 (18.5)	
Alcohol, No (%)							
Never	107 (25.5)	9 (13.9)	90 (28.0)	8 (25.0)	0.092	32 (17.3)	<0.001
Former	121 (28.9)	22 (33.9)	90 (28.0)	9 (28.1)		33 (18.0)	
Current	189 (45.1)	32 (49.2)	142 (44.0)	15 (46.9)		119 (64.7)	
Missing	2 (0.5)	2 (3.0)	0 (0.00)	0 (0.00)		0 (0.00)	
Respiratory Disease, No (%)							
Asthma	28 (6.7)	1 (1.5)	26 (8.1)	2 (6.3)	0.047	2 (1.1)	0.001
Bronchiectasis	13 (3.1)	0 (0.00)	11 (3.4)	1 (3.1)		182 (98.9)	
None	378 (90.2)	64 (98.5)	285 (88.5)	29 (90.6)		0 (0.00)	
Diabetes, Type II, No (%)							
Yes	58 (13.8)	9 (13.9)	42 (13.0)	7 (21.9)	0.842	25 (13.6)	1.000
No	361 (86.2)	56 (86.1)	280 (87.0)	25 (78.1)		159 (86.4)	
Prison, No (%)							
Yes	62 (14.8)	16 (24.6)	41 (12.7)	5 (15.6)	0.020	3 (1.6)	<0.001
No	357 (85.2)	49 (75.4)	281 (87.3)	27 (84.4)		181 (98.4)	
Household Contact of TB positive patient, No (%)							
Yes	159 (38.0)	27 (41.5)	119 (37.0)	13 (40.6)	0.754	-	-
No	256 (61.1)	38 (58.5)	199 (61.8)	19 (59.4)			
Missing	4 (0.9)	0 (0.00)	4 (1.2)	0 (0.00)			
Smear Status, No (%)							
Positive	48 (11.5)	41 (63.1)	4 (1.2)	3 (9.4)	<0.001	0 (0.00)	<0.001
Negative	363 (86.6)	16 (24.6)	318 (98.8)	29 (90.6)		183 (99.5)	
Missing	8 (1.9)	8 (12.3)	0 (0.00)	0 (0.00)		1 (0.5)	
TB-associated Symptoms							
Cough, No (%)							
<i>Length, in Weeks</i>							
Less than 1 week	102 (24.4)	8 (12.3)	90 (28.0)	4 (12.5)	0.003	-	-
1-2 weeks	107 (25.5)	16 (24.6)	81 (25.1)	10 (31.2)			
More than 2 weeks	189 (45.1)	39 (60.0)	132 (41.0)	18 (56.3)			
Missing	21 (5.0)	2 (3.1)	19 (5.9)	0 (0.00)			
<i>Phlegm</i>							
Yes	352 (84.0)	60 (92.3)	262 (81.4)	30 (93.8)	0.056	-	-
No	47 (11.2)	3 (4.6)	42 (13.0)	2 (6.2)			
Missing	20 (4.8)	2 (3.1)	18 (5.6)	0 (0.00)			
<i>Blood</i>							
Yes	166 (39.6)	33 (50.8)	120 (37.3)	13 (40.6)	0.068	-	-
No	233 (55.6)	30 (46.2)	184 (57.1)	19 (59.4)			
Missing	20 (4.8)	2 (3.0)	18 (5.6)	0 (0.00)			
Fever, No (%)							
Yes	265 (63.3)	52 (80.0)	192 (59.6)	21 (65.6)	0.001	85 (46.2)	<0.001
No	153 (36.5)	12 (18.5)	130 (40.4)	11 (34.4)		99 (53.8)	
Refused	1 (0.2)	1 (1.5)	0 (0.00)	0 (0.00)		0 (0)	
Night Sweats in the last							

3 months, No (%)							
Yes	251 (59.9)	45 (69.2)	182 (56.5)	24 (75.0)	0.072	52 (28.3)	<0.001
No	168 (40.1)	20 (30.8)	140 (43.5)	8 (25.0)		132 (71.7)	
Weight Loss (unintentional), No (%)							
Yes	293 (69.9)	55 (84.6)	218 (67.7)	20 (62.5)	0.004	84 (45.6)	<0.001
No	123 (29.4)	9 (13.9)	102 (31.7)	12 (37.5)		98 (53.3)	
Refused	3 (0.7)	1 (1.5)	2 (0.6)	0 (0.00)		2 (1.1)	
Difficulty Breathing, No (%)							
Yes	335 (80.0)	51 (78.5)	260 (80.8)	24 (75.0)	0.732	52 (28.3)	<0.001
No	84 (20.0)	14 (21.5)	62 (19.2)	8 (25.0)		132 (71.7)	

183

184 ^ TB was diagnosed based on positive sputum culture i.e. pulmonary TB, we did not include clinical
185 diagnoses or include evaluation for extra-pulmonary TB

186

187 *Screening cohort consists of patients who did not report cough or TB risk factors

188

189 **For continuous variables, an independent t-test was conducted. For binary variables, a Fisher's
190 exact test was performed. For unordered categorical variables, Chi-square test was performed, and
191 Jonckheere-Terpstra test was used for ordered categories. The first p value represents a comparison
192 between participants with and without pulmonary TB in the triage cohort and the second p value
193 represents the comparison between the overall triage and screening cohort participant groups. The
194 missing and refused categories are excluded from statistical comparisons.

195

196 Diagnostic accuracy

197 Using culture as the reference standard for pulmonary TB, qXR v4 (at the manufacturer pre-specified

198 threshold of 0.65) had an overall sensitivity for pulmonary TB of 0.95 (62/65, 95% CI 0.87-0.99),

199 specificity of 0.36 (116/322, 95% CI 0.31-0.42), and AUC of 0.66 (95% CI 0.62-0.69) (Table 2). Using

200 Xpert as the reference standard for pulmonary TB, qXR v4 (at the manufacturer pre-specified

201 threshold of 0.65) had an overall sensitivity of 0.93 (64/69, 95% CI 0.84-0.98), specificity of 0.36

202 (118/329, 95% CI 0.31-0.41), and AUC of 0.64 (95% CI 0.60-0.68) (Table 2). When the threshold was

203 set such that sensitivity was 90% to match the WHO triage test accuracy performance criterion,

204 specificity was 0.42 (135/322, 95% CI 0.37-0.48) and 0.42 (137/329, 95% CI 0.36-0.47) using the

205 culture and Xpert reference standards respectively (Table 2).

206 Table 2: Summary of Diagnostic Accuracy for qXR version 4 using the culture (primary) and Xpert
 207 (secondary) reference standards in the triage and screening cohorts.
 208
 209

	Triage Cohort (n=439)			Screening Cohort (n= 191)		
	Sensitivity (95% CI)	Specificity (95% CI)	AUC (95% CI)	Sensitivity (95% CI)	Specificity (95% CI)	AUC (95% CI)
Culture						
Manufacturer Threshold 0.65	95.4% 62/65 (87.1-99%)	36.0% 116/322 (30.8-41.5%)	0.657 (0.620, 0.694)	^	92.4% 159/172 (87.4 -95.6%)	-
Threshold 0.788*	90.8% 59/65 (81-96.5%)	41.9% 135/322 (36.5-47.5%)	0.663 (0.619, 0.708)	^	95.3% (164/172) (90.9-97.7%)	-
Xpert						
Manufacturer Threshold 0.65	92.8% 64/69 (83.9-97.6%)	35.9% 118/329 (30.7-41.3%)	0.643 (0.603, 0.683)	100% 1/1 (2.5-100%)	93.3% 167/179 (88.6-96.5%)	0.966 (-, 1.00)
Threshold 0.79*	89.9% 62/69 (80.2-95.8%)	41.6% 137/329 (36.3-47.2%)	0.657 (0.613, 0.702)	100% 1/1 (2.5-100%)	96.1% 172/179 (92.1-98.4%)	0.980 (-, 1.00)

210
 211 *threshold at which sensitivity is closest to 90%
 212 ^No positive cultures in the Screening Group
 213
 214

215 There was no difference between the AUCs for qXR v4 and qXR v3 using either the culture reference
 216 standard (0.763 [95% CI 0.70-0.82] versus 0.780 [95% CI 0.72-0.84; p=0.438]) or the Xpert reference
 217 standard (0.748 [95% CI 0.69-0.81] versus 0.759 [95% CI 0.70-0.82]; p=0.611) (Figure 2).

218
 219 Figure 2: Receiver operating characteristic (ROC) curves and estimates of area under the ROC curves
 220 (AUC) for qXR versions 3 and 4 to identify abnormalities consistent with TB in the triage cohort using
 221 the culture (left) and Xpert (right) reference standards.
 222

223

224

225 Stratified analyses

226 There was no difference in qXR sensitivity (v4) when stratified by sex, age, prior TB, HIV, and
227 symptoms (Figure 3). qXR specificity (v4) was higher in people without prior TB than in people with
228 prior TB and with cough less than 2 weeks compared to cough for more than 2 weeks (Figure 4).

229
230 Figure 3: Sensitivity of qXR version 4 for culture-confirmed pulmonary tuberculosis, overall and in pre-
231 specified stratified groups. p values are from Fisher's exact tests.

232

233

234 Figure 4: Specificity of qXR version 4 for culture-confirmed pulmonary tuberculosis, overall and in pre-
235 specified stratified groups. p values are from Fisher's exact tests.

236

237 Sensitivity analyses

238 We examined qXR accuracy when pre-specified groups in whom TB diagnostic tests are often less
239 sensitive (PWH, people with prior TB and people with other respiratory diseases) were excluded.

240 Sensitivity for qXR v4 was slightly higher in people without HIV (0.98 [95% CI: 0.91-1.00]), people

241 without prior TB (0.94 [95% CI: 0.84-0.99]), and people without other respiratory diseases (0.95 [95%

242 CI: 0.87-0.99]). Specificity remained low in these groups (people without HIV: 0.34 [95% CI: 0.29-

243 0.40], people without prior TB: 0.43 [95% CI: 0.36-0.50], and people without other respiratory

244 diseases: 0.37 [95% CI: 0.31-0.43]) (Table S2).

245

246 High prevalence of lung abnormalities

247 A high prevalence of radiographic lung abnormalities, most notably opacities (82%), consolidation

248 (63%), fibrosis (47%), nodules (57%), or cavitation (19%), was detected by qXR on digital CXR images

249 from the triage cohort (Table S4).

250

251 **Screening cohort**

252 Compared to participants in the triage cohort, participants in the screening cohort were more likely
253 to be younger and female, not have a history of HIV, any respiratory diseases or a prior history of TB,
254 not have a history of incarceration, more likely to be non-smokers but more likely to report current
255 alcohol use, and less likely to report fever, night sweats, or weight loss (Table 1). No participants in
256 the screening cohort had a positive culture, and only one participant had a positive Xpert. Since there
257 was only one person with confirmed TB in the screening group (who did have a qXR positive result),
258 we only report specificity. Using the manufacturer's pre-specified thresholds, the specificity for qXR
259 v4 was 0.92 (95% CI 0.87-0.96) using the culture reference standard and 0.95 (95% CI 0.91-0.98) using
260 the Xpert reference standard (Table 2).

261

262

263 **Discussion**

264

265 In our study population of hospitalized patients at a tertiary referral hospital in Lima, Peru, the use of
266 qXR artificial intelligence software analysis versions 3 and 4 in a triage cohort of patients with cough
267 or TB risk factors demonstrated a high sensitivity (>90%) but low specificity (32-36%), thereby
268 meeting only the WHO triage test criteria for sensitivity. In our screening cohort of patients without
269 cough or risk factors, specificity was high (>90%) but sensitivity could not be evaluated since the
270 diagnostic yield of screening this group in this setting was low (only one patient was diagnosed with
271 Xpert-positive TB).

272

273 We previously reported that the FAST strategy using Xpert for molecular diagnosis increased the yield
274 of TB diagnosis and decreased time to treatment initiation¹². Yet, despite WHO guidance that
275 molecular WHO-recommended rapid TB diagnostic tests (mWRD) such as Xpert should be the initial
276 test for people being evaluated for TB, implementation in Peru and other high-incidence settings has
277 lagged¹. While barriers to mWRD implementation are multifactorial³⁶, cost and limited laboratory
278 capacity were challenges to the implementation of Xpert as a triage or screening test as part of
279 routine practice in our setting. The use of a triage tool such as digital CXR with CAD can help identify
280 which patients should undergo testing with a mWRD¹⁶ as part of transmission prevention strategies
281 such as FAST. In our hospitalized study population, qXR was highly sensitive for correctly triaging
282 people identified as having cough or TB risk factors who had culture confirmed disease. Although low
283 qXR specificity would lead to a large number of patients with false positive results who required
284 confirmatory testing and widespread use of digital CXR with CAD poses implementation challenges,
285 qXR as a triage tool could be of clinical and public health value due to its impact on diagnostic yield
286 and may still save enough mWRDs to be cost-effective depending on the setting (cost-effectiveness
287 analyses from our study are forthcoming). Our study adds further weight to the need for population-
288 specific thresholds³⁷ to optimize implementation of CAD tools in different settings.

289

290 The low specificity of qXR in inpatients with TB symptoms or risk factors contrasts with cross-
291 sectional studies that found that qXR met WHO triage test criteria for both sensitivity (>90%) and
292 specificity (70%) when evaluated in symptomatic outpatients in Bangladesh and Pakistan^{26,38}. Our
293 triage cohort had a high prevalence of radiographic lung abnormalities, which was likely to be an
294 important contributing factor to the lower than expected specificity in this cohort. Abnormal chest
295 imaging findings in our study population may be due to inpatient populations in a tertiary referral

296 hospital being more likely to have acute illnesses such as pneumonia, and may also reflect a higher
297 proportion of people with chronic lung disease in Lima, a city known to have high rates of air
298 pollution, which has also been associated with a higher risk of tuberculosis³⁹.

299

300 Increasing data demonstrates symptom screening is insensitive⁴⁰ and often poorly implemented²⁴,
301 and a high proportion of people with TB do not report symptoms²⁵. The inclusion of individuals
302 without cough or risk factors in our screening cohort was designed to try to understand the potential
303 diagnostic yield of using qXR as a screening tool to identify unsuspected TB in hospitalized patients
304 who may be presenting for various other reasons. In this setting, the diagnostic yield of screening
305 people without symptoms or risk factors was lower than expected (based on outpatient studies). The
306 specificity of qXR was high, suggesting it could be a valuable rule-out test in this setting. The low
307 prevalence of TB in the screening cohort may be an artifact of the sample size or, it may be because
308 people with TB who present to hospital are more likely to be sicker due to TB and thus present with
309 cough (resulting in exclusion from the screening cohort) compared to the outpatient populations in
310 prevalence surveys. The exclusion of people with TB contacts and prior TB from the screening cohort
311 may have also led to the screening cohort being a lower risk group. The implementation of strategies
312 such as FAST should take into account local epidemiology—including the pre-test probability of TB in
313 people who do not report symptoms—to determine the optimal approach to determining who
314 should undergo mWRD testing. Other strategies could also be evaluated, to increase the sensitivity of
315 screening.

316

317 Strengths of our study include generating CAD diagnostic accuracy data from inpatient populations,
318 including those who were symptomatic and/or high-risk and those without identified cough or TB risk

319 factors, also contributing to a body of literature seeking to optimize the FAST facility-based
320 transmission prevention strategy in a medium incidence setting. We provide the first head-to-head
321 evaluation of version 4 (soon to be commercially available) compared to qXR version 3, and also
322 characterize other lung abnormalities detected. Limitations of our study are that digital CXR could
323 only be performed on inpatients admitted through the emergency room and that with only 65
324 patients who had culture-confirmed TB, the study only had sufficient power such that we can report
325 the lower limit of the 95% CI for sensitivity is 0.885 with 95% precision.

326

327 In conclusion, qXR had high sensitivity but low specificity as a triage tool in the context of use as part
328 of the FAST strategy in hospitalized adults admitted to a tertiary referral hospital in Peru who had a
329 high prevalence of other radiographic lung abnormalities. While specificity was high in patients
330 without cough or risk factors, the diagnostic yield of screening these patients was low in this setting.
331 These findings further support the need for population and setting-specific thresholds for CAD
332 programs and provide additional insights into the role for triage testing in hospitalized patients,
333 which remains critical to detect and treat individual patients earlier and to curb hospital TB
334 transmission.

335

336

337

338

339

340

341

342

343 Supporting information captions:

344

345 Table S1: Summary of Culture and Xpert result concordance.

346

347 Table S2: Diagnostic accuracy of qXR Version 3 and 4 for pre-specified subgroups in the triage cohort
348 for which participants with prior TB, respiratory diseases, and HIV, were excluded

349

350 Table S3: Summary of Diagnostic Accuracy for qXR version 4 compared to the culture (primary) and
351 Xpert (secondary) reference standards

352

353 Table S4: Lung abnormalities detected by qXR analysis for the Triage and Screening cohorts

354

355 Figure S1: Sensitivity of qXR version 3 for culture-confirmed pulmonary tuberculosis, overall and in
356 prespecified stratified groups. p values are from Fisher's exact tests.

357

358 Figure S2: Specificity of qXR version 3 for culture-confirmed pulmonary tuberculosis, overall and in
359 prespecified stratified groups. p values are from Fisher's exact tests.

360

Acknowledgements

The authors were allowed to use the qXR algorithms free of charge qure.ai for research purposes, but the companies had no influence over the research question, nor any other aspect of the work carried out, and had no impact on the transparency of the article.

Funding

This work was funded by the National Institutes of Health (NIAID R01 AI112748, PIs: Nardell and Tierney, and NIAID K23 AI132648-05, PI: Nathavitharana). RRN also acknowledges support from an American Society of Tropical Medicine and Hygiene Burroughs Wellcome Fellowship.

The funders had no role in study design, data collection, data analysis, data interpretation, writing of the report, or in the decision to submit for publication. The content is solely the responsibility of the authors and does not necessarily represent the views of the funders.

Competing interests

The authors declare that no competing interests exist.

Data Availability Statement

All relevant data are uploaded to the Harvard Dataverse repository.

References

1. World Health Organization. *Global Tuberculosis Report 2022*. World Health Organization; 2022. Accessed December 5, 2022. <https://apps.who.int/iris/handle/10665/363752>
2. Subbaraman R, Jhaveri T, Nathavitharana RR. Closing gaps in the tuberculosis care cascade: an action-oriented research agenda. *J Clin Tuberc Other Mycobact Dis*. 2020;19:100144. doi:10.1016/j.jctube.2020.100144
3. Willingham FF, Schmitz TL, Contreras M, et al. Hospital control and multidrug-resistant pulmonary tuberculosis in female patients, Lima, Peru. *Emerg Infect Dis*. 2001;7(1):123-127. doi:10.3201/eid0701.010117
4. Assefa D, Belachew F, Wondimagegn G, Klinkenberg E. Missed pulmonary tuberculosis: a cross sectional study in the general medical inpatient wards of a large referral hospital in Ethiopia. *BMC Infect Dis*. 2019;19(1):60. doi:10.1186/s12879-019-3716-x
5. Gandhi NR, Weissman D, Moodley P, et al. Nosocomial transmission of extensively drug-resistant tuberculosis in a rural hospital in South Africa. *J Infect Dis*. 2013;207(1):9-17. doi:10.1093/infdis/jis631
6. Migliori GB, Nardell E, Yedilbayev A, et al. Reducing tuberculosis transmission: a consensus document from the World Health Organization Regional Office for Europe. *Eur Respir J*. 2019;53(6). doi:10.1183/13993003.00391-2019
7. Nardell EA. Transmission and Institutional Infection Control of Tuberculosis. *Cold Spring Harb Perspect Med*. 2015;6(2):a018192. doi:10.1101/cshperspect.a018192
8. World Health Organization. *Rapid Communication: Key Changes to the Treatment of Drug-Resistant Tuberculosis*. World Health Organization; 2022:6. Accessed June 6, 2022. <https://apps.who.int/iris/handle/10665/353743>
9. Paleckyte A, Dissanayake O, Mpagama S, Lipman MC, McHugh TD. Reducing the risk of tuberculosis transmission for HCWs in high incidence settings. *Antimicrob Resist Infect Control*. 2021;10(1):106. doi:10.1186/s13756-021-00975-y
10. Barrera E, Livchits V, Nardell E. F-A-S-T: a refocused, intensified, administrative tuberculosis transmission control strategy. *Int J Tuberc Lung Dis*. 2015;19(4):381-384. doi:10.5588/ijtld.14.0680
11. Tierney DB, Orvis E, Nathavitharana RR, et al. FAST tuberculosis transmission control strategy speeds the start of tuberculosis treatment at a general hospital in Lima, Peru. *Infect Control Hosp Epidemiol*. Published online October 6, 2021:1-7. doi:10.1017/ice.2021.422

12. Nathavitharana RR, Daru P, Barrera AE, et al. FAST implementation in Bangladesh: high frequency of unsuspected tuberculosis justifies challenges of scale-up. *Int J Tuberc Lung Dis*. 2017;21(9):1020-1025. doi:10.5588/ijtld.16.0794
13. Miller AC, Livchits V, Ahmad Khan F, et al. Turning Off the Tap: Using the FAST Approach to Stop the Spread of Drug-Resistant Tuberculosis in the Russian Federation. *The Journal of Infectious Diseases*. 2018;218(4):654-658. doi:10.1093/infdis/jiy190
14. Le H, Nguyen N, Tran P, et al. Process measure of FAST tuberculosis infection control demonstrates delay in likely effective treatment. *Int J Tuberc Lung Dis*. 2019;23(2):140-146. doi:10.5588/ijtld.18.0268
15. WHO. WHO Consolidated guidelines on tuberculosis, Module 2: Screening, Systematic screening for tuberculosis disease. Published online 2021. <https://reliefweb.int/report/world/who-consolidated-guidelines-tuberculosis-module-2-screening-systematic-screening>
16. Nathavitharana RR, Yoon C, Macpherson P, et al. Guidance for Studies Evaluating the Accuracy of Tuberculosis Triage Tests. *The Journal of Infectious Diseases*. 2019;220(Supplement_3):S116-S125. doi:10.1093/infdis/jiz243
17. WHO. CHEST RADIOGRAPHY IN TUBERCULOSIS DETECTION. Published online 2016. <https://apps.who.int/iris/bitstream/handle/10665/252424/9789241511506-eng.pdf>
18. Kik SV, Gelaw SM, Ruhwald M, et al. *Diagnostic Accuracy of Chest X-Ray Interpretation for Tuberculosis by Three Artificial Intelligence-Based Software in a Screening Use-Case: An Individual Patient Meta-Analysis of Global Data*. *Infectious Diseases (except HIV/AIDS)*; 2022. doi:10.1101/2022.01.24.22269730
19. Gelaw SM, Kik SV, Ruhwald M, et al. *Diagnostic Accuracy of Three Computer-Aided Detection Systems for Detecting Pulmonary Tuberculosis on Chest Radiography When Used for Screening: Analysis of an International, Multicenter Migrants Screening Study*. *Radiology and Imaging*; 2022. doi:10.1101/2022.03.30.22273191
20. Qin ZZ, Mthiyane T, Barrett R, Moyo S, Zuma K, Manda S. Head-to-head evaluation of computer automated reading software to detect tuberculosis-related abnormalities from chest x-ray images using South Africa prevalence survey results. *Unpublished*.
21. Qin ZZ, Mhe SA, Sarker MS, et al. Can artificial intelligence (AI) be used to accurately detect tuberculosis (TB) from chest X-rays? An evaluation of five AI products for TB triaging in a high TB burden setting. :46.
22. Tavaziva G, Harris M, Abidi SK, et al. Chest X-ray Analysis With Deep Learning-Based Software as a Triage Test for Pulmonary Tuberculosis: An Individual Patient Data Meta-Analysis of Diagnostic Accuracy. *Clinical Infectious Diseases*. Published online July 21, 2021:ciab639. doi:10.1093/cid/ciab639

23. Nash M, Kadavigere R, Andrade J, et al. Deep learning, computer-aided radiography reading for tuberculosis: a diagnostic accuracy study from a tertiary hospital in India. *Sci Rep*. 2020;10(1):210. doi:10.1038/s41598-019-56589-3
24. Divala TH, Lewis J, Bulterys MA, Lutje V, Corbett EL, Schumacher SG. Missed opportunities for diagnosis and treatment in patients with TB symptoms: a systematic review. *Public Health Action*.:8.
25. Frascella B, Richards AS, Sossen B, et al. Subclinical Tuberculosis Disease—A Review and Analysis of Prevalence Surveys to Inform Definitions, Burden, Associations, and Screening Methodology. *Clinical Infectious Diseases*. 2021;73(3):e830-e841. doi:10.1093/cid/ciaa1402
26. Qin ZZ, Ahmed S, Sarker MS, et al. Tuberculosis detection from chest x-rays for triaging in a high tuberculosis-burden setting: an evaluation of five artificial intelligence algorithms. *The Lancet Digital Health*. 2021;3(9):e543-e554. doi:10.1016/S2589-7500(21)00116-3
27. Muyoyeta M, Maduskar P, Moyo M, et al. The Sensitivity and Specificity of Using a Computer Aided Diagnosis Program for Automatically Scoring Chest X-Rays of Presumptive TB Patients Compared with Xpert MTB/RIF in Lusaka Zambia. Wilkinson RJ, ed. *PLoS ONE*. 2014;9(4):e93757. doi:10.1371/journal.pone.0093757
28. Breuninger M, van Ginneken B, Philipsen RHHM, et al. Diagnostic Accuracy of Computer-Aided Detection of Pulmonary Tuberculosis in Chest Radiographs: A Validation Study from Sub-Saharan Africa. Hoshino Y, ed. *PLoS ONE*. 2014;9(9):e106381. doi:10.1371/journal.pone.0106381
29. Melendez J, Sánchez CI, Philipsen RHHM, et al. An automated tuberculosis screening strategy combining X-ray-based computer-aided detection and clinical information. *Sci Rep*. 2016;6(1):25265. doi:10.1038/srep25265
30. Yuen CM, Puma D, Millones AK, et al. Identifying barriers and facilitators to implementation of community-based tuberculosis active case finding with mobile X-ray units in Lima, Peru: a RE-AIM evaluation. *BMJ Open*. 2021;11(7):e050314. doi:10.1136/bmjopen-2021-050314
31. Nguyen LH, Codlin AJ, Vo LNQ, et al. An Evaluation of Programmatic Community-Based Chest X-ray Screening for Tuberculosis in Ho Chi Minh City, Vietnam. *TropicalMed*. 2020;5(4):185. doi:10.3390/tropicalmed5040185
32. Madhani F, Maniar RA, Burfat A, et al. Automated chest radiography and mass systematic screening for tuberculosis. *int j tuberc lung dis*. 2020;24(7):665-673. doi:10.5588/ijtld.19.0501
33. Mungai B, Ong'angò J, Ku CC, et al. Accuracy of computer-aided chest X-ray in community-based tuberculosis screening: Lessons from the 2016 Kenya National Tuberculosis Prevalence Survey. Majumdar S, ed. *PLOS Glob Public Health*. 2022;2(11):e0001272. doi:10.1371/journal.pgph.0001272

34. Bossuyt PM, Reitsma JB, Bruns DE, et al. STARD 2015: an updated list of essential items for reporting diagnostic accuracy studies. *BMJ*. Published online October 28, 2015:h5527. doi:10.1136/bmj.h5527
35. World Health Organization. *High-Priority Target Product Profile for New Tuberculosis Diagnostics: Report of a Consensus Meeting.*; 2014.
36. Albert H, Nathavitharana RR, Isaacs C, Pai M, Denkinger CM, Boehme CC. Development, roll-out and impact of Xpert MTB/RIF for tuberculosis: what lessons have we learnt and how can we do better? *Eur Respir J*. 2016;48(2):516-525. doi:10.1183/13993003.00543-2016
37. Qin ZZ, Sander MS, Rai B, et al. Using artificial intelligence to read chest radiographs for tuberculosis detection: A multi-site evaluation of the diagnostic accuracy of three deep learning systems. *Sci Rep*. 2019;9(1):15000. doi:10.1038/s41598-019-51503-3
38. Khan FA, Majidulla A, Tavaziva G, et al. Chest x-ray analysis with deep learning-based software as a triage test for pulmonary tuberculosis: a prospective study of diagnostic accuracy for culture-confirmed disease. *The Lancet Digital Health*. 2020;2(11):e573-e581. doi:10.1016/S2589-7500(20)30221-1
39. Lin YJ, Lin HC, Yang YF, et al. Association Between Ambient Air Pollution and Elevated Risk of Tuberculosis Development. *IDR*. 2019;Volume 12:3835-3847. doi:10.2147/IDR.S227823
40. Yoon C, Dowdy DW, Esmail H, MacPherson P, Schumacher SG. Screening for tuberculosis: time to move beyond symptoms. *The Lancet Respiratory Medicine*. 2019;7(3):202-204. doi:10.1016/S2213-2600(19)30039-6
41. Mungai BN, Joekes E, Masini E, et al. 'If not TB, what could it be?' Chest X-ray findings from the 2016 Kenya Tuberculosis Prevalence Survey. *Thorax*. 2021;76(6):607-614. doi:10.1136/thoraxjnl-2020-216123
42. Engle E, Gabrielian A, Long A, Hurt DE, Rosenthal A. Performance of Qure.ai automatic classifiers against a large annotated database of patients with diverse forms of tuberculosis. Hong JC, ed. *PLoS ONE*. 2020;15(1):e0224445. doi:10.1371/journal.pone.0224445
43. Singh R, Kalra MK, Nitiwarangkul C, et al. Deep learning in chest radiography: Detection of findings and presence of change. Eapen GA, ed. *PLoS ONE*. 2018;13(10):e0204155. doi:10.1371/journal.pone.0204155

Patients enrolled with cough or TB risk factors (n=964)

Excluded (n= 475)

- ◆ Not admitted to emergency department (n= 378)
- ◆ CXR missing/deleted/not completed (n= 65)
- ◆ Other reasons for not undergoing digital CXR (n=32)

Triage cohort (n=489)

Removed from analysis (n=50)

- Currently on anti-TB drugs (n=45)
- On anti-TB drugs in last year (n=5)

Did not have microbiological tests (n= 20)

Microbiological testing (n=419)

- ◆ Culture positive (65/387)
- ◆ Xpert positive (69/398)
- ◆ Both Xpert and Culture positive (55/366)

Patients enrolled without cough or TB risk factors
Screening cohort (n=220)

Excluded (n=36)

- Household contact of a person with TB (n=27)
- No microbiological testing (n=9)

Microbiological testing (n=184)

- ◆ Culture testing (n=172)
 - Negative (n=172)
- ◆ Xpert testing (n=180)
 - Negative (n=179)
 - Positive (n=1)

Category and Variable	nN	p-value		Specificity (95% CI)
Demographics				
Male	48/188	0.052		0.26 (0.20, 0.32)
Female	54/134			0.40 (0.32, 0.49)
<40 years	51/150	0.571		0.34 (0.27, 0.42)
>40 years	51/172			0.30 (0.23, 0.37)
Risk Factors				
No Prior TB	84/207	0.001		0.41 (0.34, 0.48)
Prior TB	18/114			0.16 (0.10, 0.24)
HIV Negative	89/294	0.095		0.30 (0.25, 0.36)
HIV Positive	15/28			0.46 (0.28, 0.66)
Clinical Symptoms				
Cough > 2 weeks	26/132	0.006		0.20 (0.13, 0.28)
Cough < 2 weeks	69/171			0.40 (0.33, 0.48)
Night sweats	55/182	0.649		0.30 (0.24, 0.38)
No Night sweats	47/140			0.34 (0.26, 0.42)
Fever	58/192	0.645		0.30 (0.24, 0.37)
No Fever	44/130			0.34 (0.26, 0.43)
Weight Loss	55/218	0.012		0.25 (0.20, 0.32)
No Weight Loss	47/102			0.46 (0.36, 0.56)
Overall				
Overall	102/322			0.32 (0.27, 0.37)

0 .2 .4 .6 .8 1

Category

and Variable

n/N p-value

Sensitivity

(95% CI)

medRxiv preprint doi: <https://doi.org/10.1101/2023.05.17.23290110>; this version posted May 24, 2023. The copyright holder for this preprint (which was not certified by peer review) is the author/funder, who has granted medRxiv a license to display the preprint in perpetuity. It is made available under a [CC-BY 4.0 International license](https://creativecommons.org/licenses/by/4.0/).

Demographics

Male	44/48	1.000		0.92 (0.80, 0.98)
Female	15/17			0.88 (0.64, 0.98)
<40 years	35/38	1.000		0.92 (0.79, 0.98)
>40 years	24/27			0.89 (0.71, 0.98)

Risk Factors

No Prior TB	46/52	0.828		0.89 (0.77, 0.96)
Prior TB	13/13			1.00 (0.75, 1.00)
HIV Negative	54/58	0.766		0.93 (0.83, 0.98)
HIV Positive	5/7			0.71 (0.29, 0.96)

Clinical Symptoms

Cough > 2 weeks	37/39	0.850		0.95 (0.83, 0.99)
Cough < 2 weeks	20/24			0.83 (0.63, 0.95)
Night sweats	39/45	0.848		0.87 (0.73, 0.95)
No Night sweats	20/20			1.00 (0.83, 1.00)
Fever	46/52	0.823		0.89 (0.77, 0.96)
No Fever	12/12			1.00 (0.73, 1.00)
Weight Loss	49/55	1.000		0.89 (0.78, 0.96)
No Weight Loss	9/9			1.00 (0.66, 1.00)

Test Results

Smear Positive	38/41	0.830		0.93 (0.80, 0.98)
Smear Negative	13/16			0.81 (0.54, 0.96)

Overall

Overall	59/65			0.91 (0.81, 0.96)
---------	-------	--	--	-------------------



**Category
and Variable**

n/N p-value

**Sensitivity
(95% CI)**

medRxiv preprint doi: <https://doi.org/10.1101/2023.05.17.23290110>; this version posted May 24, 2023. The copyright holder for this preprint (which was not certified by peer review) is the author/funder, who has granted medRxiv a license to display the preprint in perpetuity. It is made available under a [CC-BY 4.0 International license](https://creativecommons.org/licenses/by/4.0/).

Demographics

Male	46/48	1.000		0.96 (0.86, 0.99)
Female	16/17			0.94 (0.71, 1.00)
<40 years	37/38	1.000		0.97 (0.86, 1.00)
>40 years	25/27			0.93 (0.76, 0.99)

Risk Factors

No Prior TB	49/52	1.000		0.94 (0.84, 0.99)
Prior TB	13/13			1.00 (0.75, 1.00)
HIV Negative	57/58	0.764		0.98 (0.91, 1.00)
HIV Positive	5/7			0.71 (0.29, 0.96)

Clinical Symptoms

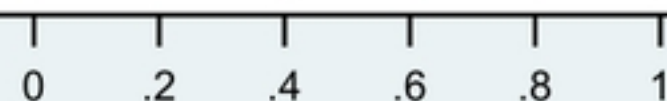
Cough > 2 weeks	37/39	1.000		0.95 (0.83, 0.99)
Cough < 2 weeks	23/24			0.96 (0.79, 1.00)
Night sweats	42/45	1.000		0.93 (0.82, 0.99)
No Night sweats	20/20			1.00 (0.83, 1.00)
Fever	49/52	1.000		0.94 (0.84, 0.99)
No Fever	12/12			1.00 (0.73, 1.00)
Weight Loss	52/55	1.000		0.94 (0.85, 0.99)
No Weight Loss	9/9			1.00 (0.66, 1.00)

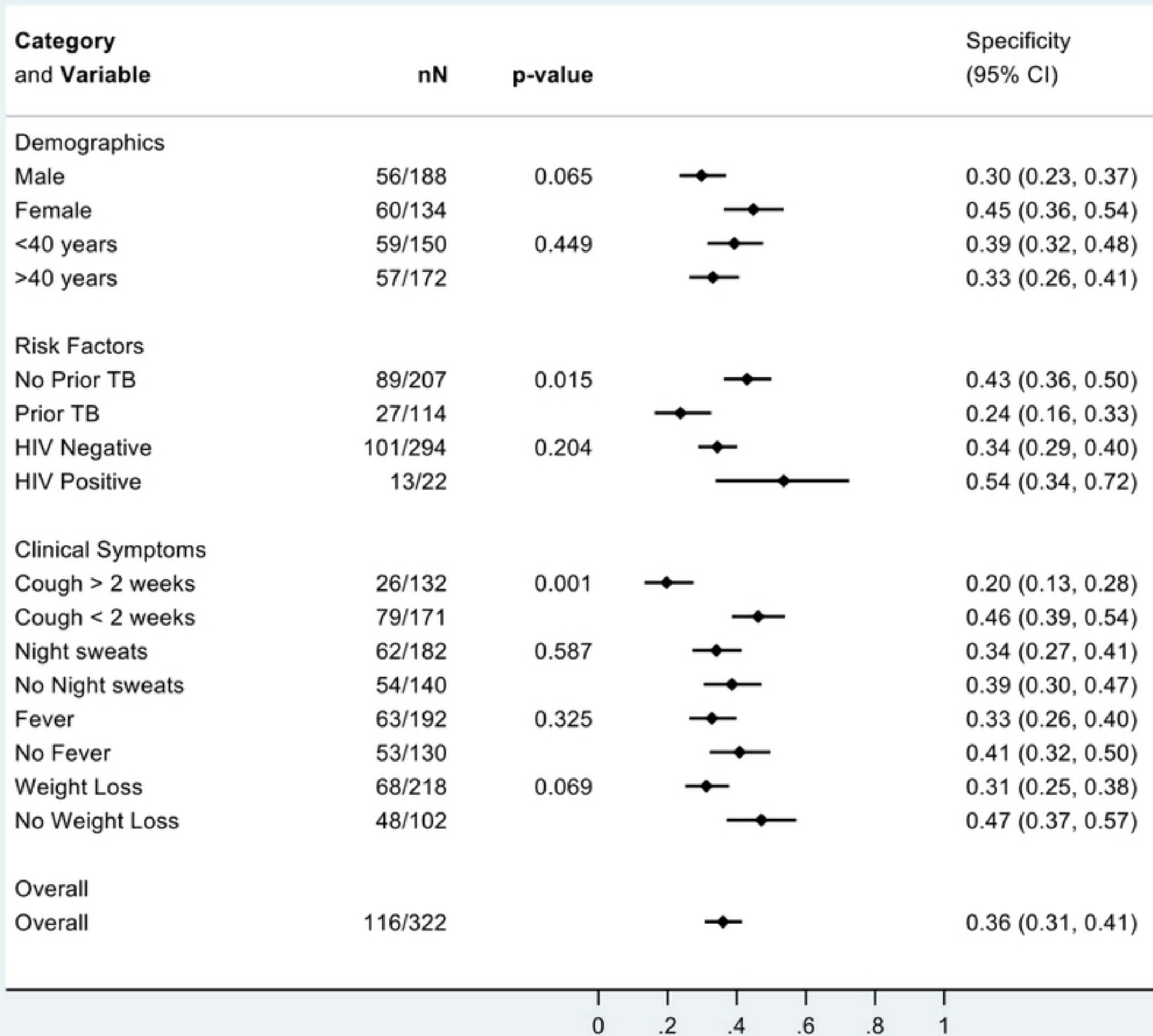
Test Results

Smear Positive	40/41	0.833		0.98 (0.87, 1.00)
Smear Negative	14/16			0.88 (0.62, 0.98)

Overall

Overall	62/65			0.95 (0.87, 0.99)
---------	-------	--	--	-------------------





0 .2 .4 .6 .8 1

