

## **Clonal Hematopoiesis of Indeterminate Potential in Patients with Chronic Thromboembolic Pulmonary Hypertension**

**Running title:** *Liu et al.; CHIP in CTEPH*

Chao Liu, MD<sup>1#</sup>; Chun-Yan Cheng, MD<sup>1#</sup>; Tian-Yu Lian, MD<sup>1,2#</sup>; Yu-Ping Zhou, MD<sup>1</sup>; Yin-Jian Yang, MD<sup>1</sup>; Si-Jin Zhang, MD<sup>3</sup>; Yun-Peng Wei, MD<sup>1</sup>; Yong-Jian Zhu, MD<sup>4</sup>; Lu-Hong Qiu, MD<sup>1</sup>; Bao-Chen Qiu, MD<sup>1</sup>; Li-Yan Ren, MD<sup>1</sup>; Jing-Si Ma, BS<sup>5</sup>; Ruo-Nan Li, BS<sup>5</sup>; Jia Wang, BS<sup>6</sup>; Ying-Hui-Zi Shen, BS<sup>7</sup>; Zhi-Yan Han, MD<sup>8</sup>; Jing-Hui Li, MD<sup>8</sup>; Qin-Hua Zhao, MD<sup>9</sup>; Lan Wang, MD<sup>9</sup>; Xi-Qi Xu, MD<sup>1</sup>; Kai Sun, PhD<sup>1,2</sup>; Duo-Lao Wang, PhD<sup>10</sup>; Ze-Jian Zhang, PhD<sup>1,2\*</sup>; Zhi-Cheng Jing, MD<sup>1\*</sup>

### **Affiliations**

<sup>1</sup>Department of Cardiology, State Key Laboratory of Complex Severe and Rare Diseases, Peking Union Medical College Hospital, Chinese Academy of Medical Sciences and Peking Union Medical College, Beijing, China;

<sup>2</sup>Medical Research Center, State Key Laboratory of Complex Severe and Rare Diseases, Peking Union Medical College Hospital, Chinese Academy of Medical Sciences and Peking Union Medical College, Beijing, China;

<sup>3</sup>Department of Cardiovascular Medicine, Ruijin Hospital Affiliated to Shanghai Jiao Tong University School of Medicine, Shanghai, China;

<sup>4</sup>Department of Cardiology, The First Affiliated Hospital of Zhengzhou University, Zhengzhou, China;

<sup>5</sup>School of Pharmacy, Henan University, Henan, China;

<sup>6</sup>Department of Medical Laboratory, Weifang Medical University, Weifang, Shandong,

China;

<sup>7</sup>Department of Cardiovascular Medicine, The First Hospital of Jilin University, Changchun, China;

<sup>8</sup>State Key Laboratory of Cardiovascular Disease and FuWai Hospital, Chinese Academy of Medical Sciences and Peking Union Medical College, Beijing, China;

<sup>9</sup>Department of Cardio-Pulmonary Circulation, Shanghai Pulmonary Hospital, Tongji University, Shanghai, China;

<sup>10</sup>Department of Clinical Sciences, Liverpool School of Tropical Medicine, Liverpool, United Kingdom

<sup>#</sup>These authors contributed equally to this work as the co-first authors.

<sup>\*</sup>Drs Zhi-Cheng Jing and Ze-Jian Zhang contributed equally to this study as the co-corresponding authors.

**Address for Correspondence:**

Zhi-Cheng Jing, MD, PhD

Department of Cardiology, State Key Laboratory of Complex Severe and Rare Diseases, Peking Union Medical College Hospital, Chinese Academy of Medical Sciences and Peking Union Medical College, No. 1 Shuaifuyuan Wangfujing, Dongcheng District, Beijing 100730, China.

Tel: +86-10-69155023

E-mail: [jingzhicheng@vip.163.com](mailto:jingzhicheng@vip.163.com)

Ze-Jian Zhang, PhD

Medical Research Center, State Key Laboratory of Complex Severe and Rare

Diseases, Peking Union Medical College Hospital, Chinese Academy of Medical Sciences and Peking Union Medical College, No. 1 Shuaifuyuan Wangfujing, Dongcheng District, Beijing 100730, China.

Tel: +86-10-69154613

E-mail:zejianzhang2018@163.com

Word Count for main text: 3059

1 **Abstract**

2 **Background** The pathogenesis of chronic thromboembolic pulmonary hypertension  
3 (CTEPH) is complex and multifactorial, with growing evidence indicating the  
4 involvement of hematologic disorders. Clonal hematopoiesis of indeterminate  
5 potential (CHIP) has recently been associated with increased risks of both  
6 hematologic malignancies and cardiovascular diseases. The CHIP in patients with  
7 CTEPH and its clinical relevance remain undetermined.

8 **Methods** We performed a step-wise calling method on the next-generation  
9 sequencing data from 499 CTEPH patients referred to three centers between October  
10 2006 and December 2021 to identify CHIP mutations. We associated CHIP with  
11 all-cause mortality in patients with CTEPH. To provide potential mechanistic insights,  
12 the associations between CHIP and inflammation characteristics reflected by  
13 circulating cytokines and IgG galactosylation, a hallmark of inflammatory state in  
14 diseases were also determined.

15 **Results** Total 51 (10.2%) patients with CTEPH carried at least one CHIP mutation at  
16 a variant allele frequency of  $\geq 2\%$ , and the most common mutations were among  
17 *DNMT3A*, *RUN1* and *STAG2*. During a mean follow-up time of 55 months, deaths  
18 occurred in 21 patients (42.9%) in the CHIP group and 105 patients (24.3%) in the  
19 non-CHIP group, contributing to the 5-year survival rate of 65.3% in the CHIP group  
20 and 81.9% in the non-CHIP group ( $P < 0.001$  for log-rank test). The association of  
21 CHIP with mortality remained robust in the fully adjusted model (HR: 3.447; 95% CI:  
22 1.747 - 6.803;  $P < 0.001$ ). Besides, patients in the CHIP group showed higher  
23 circulating IL-1beta and IL-6 and lower IL-4 and IgG galactosylation compared with

24 the non-CHIP group.

25 **Conclusions** CHIP is enriched in CTEPH patients and is associated with a worse  
26 prognosis in CTEPH. Mechanically, patients in the CHIP group showed a more severe  
27 inflammatory state.

28

29 **Key Words:** CHIP; CTEPH; inflammation; clinical outcome; high-confidence CHIP  
30 calls strategies.

31

32 **Non-standard Abbreviations and Acronyms**

33 6MWD: 6-minute walking distance

34 BPA: balloon pulmonary angioplasty

35 CHIP: clonal hematopoiesis of indeterminate potential

36 CI: cardiac index

37 CTEPH: chronic thromboembolic pulmonary hypertension

38 MALDI-TOF-MS: matrix-assisted laser desorption/ionization time of flight mass

39 spectrometry

40 MPN: myeloproliferative neoplasms

41 NT-proBNP: N-terminal pro-B-type natriuretic peptide

42 PEA: pulmonary endarterectomy

43 PH: pulmonary hypertension

44 SvO<sub>2</sub>: mixed venous oxygen saturation

45 VAF: variant allele frequency

46 WES: whole-exome sequencing

47 WGS: whole-genome sequencing

48 WHO FC: World Health Organization functional class

49

50 **Clinical Perspective**

51 **What is new?**

52 • Clonal hematopoiesis of indeterminate potential (CHIP) mutations are enriched in  
53 chronic thromboembolic pulmonary hypertension (CTEPH) patients, with most  
54 common mutated genes being *DNMT3A*, *RUN1* and *STAG2*.

55 • CHIP is associated with worse clinical outcomes in CTEPH.

56 • CHIP is associated with more severe inflammation state mediated by  
57 myeloid as well as lymphoid cells in patients with CTEPH.

58

59 **What are the clinical implications?**

60 • CHIP might be a risk factor for CTEPH, suggesting a relationship between  
61 CTEPH and hematopoietic disorders.

62 • CHIP represented an additional disease component in CTEPH that independently  
63 impacts prognosis.

64 • CHIP might be a potential target for personalized medicine and an indicator of  
65 benefit from anti-inflammatory therapies for CTEPH patients.

66

67 **Introduction**

68 Chronic thromboembolic pulmonary hypertension (CTEPH) is a long-term and  
69 life-threatening complication of pulmonary embolism, characterized by chronic  
70 obstruction of pulmonary vasculature with organized and fibrotic thrombi and  
71 vascular remodeling<sup>1,2</sup>. Increasing evidence showed that a variety of factors including  
72 inflammation<sup>3-6</sup>, coagulation dysregulation<sup>7,8</sup>, genetics<sup>9,10</sup>, *etc.* played important roles  
73 in the development of CTEPH, suggesting the complexity and multifactorial nature of  
74 pathogenesis involved.

75

76 Recently, there is more and more evidence supporting the involvement of hematologic  
77 disorders especially myeloproliferative neoplasms (MPN) in the pathogenesis of  
78 CTEPH, including higher rates of thrombotic events as well as recurrent venous  
79 thromboembolism in patients with MPN<sup>11,12</sup>, the elevated prevalence of CTEPH in  
80 MPN patients<sup>13</sup>, and increased mortality after pulmonary endarterectomy (PEA) in  
81 CTEPH patients complicated with MPN<sup>14</sup>. Clonal hematopoiesis of indeterminate  
82 potential (CHIP), defined as the presence of an expanded somatic blood cell clone in  
83 persons without other hematologic diseases, is an early stage of MPN and  
84 hematologic cancers<sup>15,16</sup>. The presence of CHIP was shown to increase with age and is  
85 significantly associated with the higher prevalence and worse prognosis of  
86 cardiovascular diseases<sup>17-21</sup>. However, the relationship between CHIP and CTEPH is  
87 yet to be investigated.

88



89 The present study aimed to assess the prevalence of CHIP-driver mutations in patients  
90 with CTEPH and, more importantly, to associate its presence with clinical outcomes.

91

## 92 **Method**

### 93 **Study Population**

94 From October 2006 to December 2021, all consecutive patients with definite  
95 diagnosis of CTEPH in three national pulmonary hypertension (PH) referral centers:  
96 Shanghai Pulmonary Hospital with patients mainly from south China and FuWai  
97 Hospital and Peking Union Medical College Hospital in Beijing with patients mainly  
98 from north China, were included in this study. For the diagnosis of CTEPH<sup>22</sup>, three  
99 criteria had to be satisfied: (1) at least three months of effective anticoagulation,  
100 including warfarin or new oral anticoagulant drugs (rivaroxaban or dabigatran); (2)  
101 typical imaging characteristics of CTEPH assessed by computed tomography  
102 pulmonary angiography and/or direct pulmonary angiography; and (3) confirmed  
103 pre-capillary PH defined as mean pulmonary artery pressure of  $\geq 25$  mm Hg and  
104 pulmonary arterial wedge pressure of  $\leq 15$  mm Hg. The hemodynamic evaluation was  
105 performed by right heart catheterization. Patients without available blood samples and  
106 therefore lacking sequencing data and CHIP information were excluded. According to  
107 the definition of CHIP, patients with previous hematologic cancers or other  
108 hematologic diseases were also excluded. The ethics review boards of the Shanghai  
109 Pulmonary Hospital, FuWai Hospital and Peking Union Medical College Hospital  
110 approved the protocols. All patients provided written informed consent. The study

111 complies with the Declaration of Helsinki.

112

### 113 **Next-Generation Sequencing**

114 Genomic DNA samples were either whole-exome sequencing (WES) or  
115 whole-genome sequencing (WGS) according to standard protocols. The WGS was  
116 performed at WuXi Apptech (Shanghai, China) using a PCR-free library preparation  
117 and paired-end ( $2 \times 150$  bp) sequencing on the HiSeq X Ten platform (Illumina, Inc.,  
118 San Diego, CA, USA) to yield a minimum of  $35 \times$  coverage. The WES was  
119 performed at Novogene Corporation (Beijing, China) using the Agilent SureSelect  
120 Human All Exon kit (50 MB or 60 MB) and sequencing on the Illumina HiSeq  
121 instruments to provide a mean coverage of more than  $100 \times$  on the target regions of  
122 every sample. Prior to sequencing, samples were randomized to minimize batch  
123 effects. We used two sequencing platforms (WES and WGS) to genotype the CTEPH  
124 cases. To reduce systematic errors and alignment artifacts of the two sequencing  
125 platform, we restricted our call for variants to RefSeq coding sequences and called  
126 WGS together with WES using very strict criteria detailed below.

127

### 128 **Variant Calling and Annotation Strategies**

129 We used previously established methods to identify CHIP, which were described in  
130 detail elsewhere<sup>23</sup>. In the first step, Mutect2, Genome Analysis Toolkit was used as a  
131 somatic variant calling pipeline to scan aligned sequencing files for putative somatic  
132 variants<sup>24</sup>. Briefly, Mutect2 was run in ‘tumor-only’ mode with default parameters,

133 over a list of variants within 74 driver genes previously associated with CHIP<sup>19</sup> (Table  
134 S1), as well as those new variants reported as somatic mutations in hematologic  
135 cancers at least seven times in COSMIC. Only non-synonymous exonic or splicing  
136 variants were considered. We removed variants with a total read depth of less than 15,  
137 variants with minimum read depth for the alternate allele of less than three, and  
138 variants lacking variant support in both forward and reverse sequencing reads. We  
139 also removed variants below the 2% variant allele frequency (VAF) threshold  
140 conventionally used to define CHIP. Variants occurring in 5% of all studied patients  
141 were considered probable recurrent sequencing artifacts. For this, the association of  
142 each variant group with age, an established strong correlate of CHIP was tested.  
143 Variants that were not associated with age at even a suggestive significance of  $P <$   
144 0.10 were removed from the dataset as they were suspected to represent sequencing  
145 artifacts<sup>23</sup>. To filter out potential germline variants, we conducted a binomial test  
146 across all variants to determine whether the measured read depth for the variant is  
147 statistically different from half of the sum of all sequencing reads at that site, as would  
148 be true for heterozygous germline variants. Variants that failed the binomial test at  $P <$   
149 0.01 would be removed from the dataset.

150

### 151 **Data Collection and Follow-up**

152 Data on patient characteristics at first admission for CTEPH diagnosis were collected,  
153 including demographic information, clinical symptoms, medical history, World Health  
154 Organization functional class (WHO FC), 6-minute walking distance (6MWD),

155 hematological testing, invasive hemodynamics, and treatments. Blood samples for  
156 genetic sequencing and circulating inflammation characteristics testing were collected  
157 during the first diagnostic right heart catheterization.

158

159 Patients were followed up via clinic visits or by phone or internet interviews, and the  
160 observation period was from the initial diagnosis of CTEPH to January 2022 or the  
161 latest visit. The single clinical endpoint was all-cause mortality.

162

### 163 **Inflammatory Characteristics Measurement**

164 The levels of four circulating inflammatory markers were determined in the plasma of  
165 CTEPH patients using commercially available bead-based multiplex Luminex assays  
166 employing the Luminex 200 system for acquisition. Standard curves were included in  
167 the kits. The procedure was according to the manufacturer's protocol and previous  
168 literature<sup>25</sup>.

169

170 The inflammatory marker of IgG Gal-ratio (distribution of IgG galactosylation)  
171 profiling is performed according to published protocols<sup>26,27</sup>. Briefly, IgG was isolated  
172 from plasma samples using 96-well Protein A Spin Plates, and the glycans on IgG  
173 were enzymatically released by PNGase F. The released IgG N-glycans were then  
174 purified by porous graphitized carbon and analyzed by matrix-assisted laser  
175 desorption/ionization time of flight mass spectrometry (MALDI-TOF-MS) (Bruker  
176 Daltonics, Bremen). The processing of MALDI-TOF-MS raw data and IgG N-glycan

177 identification was according to our previous work<sup>26,27</sup>. The inflammatory marker of  
178 IgG Gal-ratio was obtained by calculating the relative intensities of agalactosylated  
179 (H3N4F1, G0) vs. monogalactosyl (H4N4F1, G1) and digalactosyl (H5N4F1, G2)  
180 N-glycans according to the formula of Gal-ratio =  $G0/(G1 + 2 \times G2)$  as previously  
181 reported<sup>26,27</sup>.

182

### 183 **Statistical Analysis**

184 Adherence to a Gaussian distribution was determined using the Kolmogorov-Smirnov  
185 test. Normally distributed data were described as mean SD, and the independent  
186 samples Student's t-test was used to compare continuous variables between two  
187 groups. In the case of skewed distribution, data were described as median (IQR) and  
188 the nonparametric Mann-Whitney U-test was used for group comparisons. Qualitative  
189 variables were described with n (%) and analyzed using the Fisher exact test.  
190 Multivariable Cox proportional-hazards regression models were used to calculate  
191 hazard ratios (HR) for event rates, whereas Kaplan-Meier event rates and log-rank  
192 tests were used to compare survival estimates. All reported tests were 2-tailed, and the  
193 threshold for statistical significance was 0.05. The analyses were performed with  
194 SPSS 26 and GraphPad Prism 8.

195

## 196 **Results**

### 197 **Study Population and baseline characteristics**

198 The screening and inclusion of patients with CTEPH are presented in Figure 1.

199 Initially, 567 patients suspected of having CTEPH were screened. Among them, eight  
200 patients were excluded due to having other aetiologies of pulmonary artery stenosis  
201 (four with pulmonary arteritis, two with congenital pulmonary artery stenosis and two  
202 with pulmonary artery sarcomas). Fifty-four patients without available blood samples  
203 and six patients with previous hematologic diseases were further excluded. Finally,  
204 499 patients were included in the analysis.

205

206 Baseline characteristics are provided in Table 1: 248 patients (49.7%) were male;  
207 mean patient age was  $54.4 \pm 14.8$  years; 468 patients (93.8%) received PH-targeted  
208 drugs therapy; 273 patients (54.7%) underwent PEA or BPA treatment. Specifically,  
209 198 patients (39.7%) underwent BPA, 106 patients (21.2%) underwent PEA and 31  
210 patients (6.2%) received BPA and PEA bridging therapy.

211

## 212 **Prevalence of CHIP**

213 Fifty-one (10.2%) patients were found to carry one or more of the CHIP mutations at  
214 a VAF of  $\geq 2\%$ , with six of them carrying two mutations (Figure 2A). With an  
215 identical analysis strategy, CTEPH patients in our cohort presented a higher  
216 prevalence than the healthy population of comparative age in the “All of Us”  
217 Research Program, suggesting that CHIP mutations are enriched in patients with  
218 CTEPH.

219

220 A total of 52 mutations in 25 genes were identified, and the somatic mutations most

221 commonly occurred in the genes *DNMT3A* (11 patients), *RUNX1* (six patients),  
222 *STAG2* (five patients), followed by *TET2*, *ASXL1*, *BCOR*, *EP300* and *GNAS* (three  
223 patients each). Mutations in *CREBBP*, *PHIP* and *PRPF40B* were identified in two  
224 patients, and 14 other genes associated with CHIP were found to be mutated in  
225 individual patients (Figure 2B). A detailed list including types of mutations and VAFs  
226 is provided in the Supplemental Material, Table S2.

227

228 Compared with non-carriers, patients with CHIP mutations were older, had  
229 significantly higher N-terminal pro-B-type natriuretic peptide (NT-proBNP) and  
230 D-dimer levels, decreased cardiac index (CI), mixed venous oxygen saturation (SvO<sub>2</sub>),  
231 and 6MWD, and more compromised cardiac function. Other clinical characteristics as  
232 well as treatment regimens showed no difference between the two groups (Table 1).

233

#### 234 **Follow-up**

235 With 18 patients lost for follow-up, a total of 481 patients were further included in the  
236 survival analysis. During a median follow-up of 55 months, deaths occurred in 21  
237 patients (42.9%) in the CHIP group and 105 patients (24.3%) in the non-CHIP group,  
238 contributing to the 5-year survival rate of 65.3% in the CHIP group and 81.9% in the  
239 non-CHIP group ( $P < 0.001$  for the log-rank test) (Figure 3). In univariate analysis,  
240 the presence of CHIP mutations with a VAF of  $\geq 2\%$  was significantly associated with  
241 all-cause mortality with HR of 2.290 (95% CI: 1.428 - 3.672;  $P < 0.001$ ). After  
242 adjustment for age and sex or in combination with clinical and hemodynamic

243 characteristics, the association remained robust (HR: 2.161, 95% CI: 1.342 - 3.479,  $P$   
244 = 0.002; HR: 2.636, 95% CI: 1.415 - 4.912,  $P = 0.002$ ). Finally, by multivariate Cox  
245 proportional regression analysis, including age, sex, clinical and hemodynamic  
246 characteristics and treatment regimens (whether or not patients underwent PEA/BPA  
247 treatments) as covariants, all-cause death still remained independently associated with  
248 the presence of somatic mutations associated with CHIP (HR: 3.447; 95% CI: 1.747 -  
249 6.803;  $P < 0.001$ ) (Table 3). There was no evidence of effect modification across  
250 different treatment groups ( $P$  for interaction = 0.886).

251

## 252 **Potential Mechanistic Insights**

253 Mechanistically, the most common mutated genes in CHIP, *DNMT3A* and *TET2*, were  
254 experimentally shown to regulate the inflammatory potential of circulating  
255 leucocytes<sup>19,28-30</sup>. Meanwhile, various immune cells as well as chemokines were  
256 enriched in plasma or thrombotic lesions of CTEPH patients<sup>3-6</sup>. In the present study,  
257 multiple inflammatory mediators including TNF-alpha, IL-1beta, IL-4 and IL-6 were  
258 measured for 20 patients carrying CHIP mutations and 201 patients without such. In  
259 line with previous works<sup>31,32</sup>, our data showed elevated pro-inflammatory cytokines  
260 IL-1beta ( $P = 0.009$ ), IL-6 ( $P = 0.001$ ) and TNF-alpha ( $P = 0.06$ ) and decreased  
261 anti-inflammatory cytokine IL-4 ( $P = 0.008$ ) in the CHIP group of CTEPH patients  
262 (Figure 3).

263

264 Besides, our previous study suggested that IgG N-glycan characteristics of CTEPH



265 patients presented an obvious pro-inflammatory phenotype (decreased proportion of  
266 IgG galactosylation [higher IgG Gal-ratio]<sup>33</sup>. Decreased IgG galactosylation has been  
267 reported to be a hallmark of inflammation<sup>34</sup>. In the present study, baseline IgG glycan  
268 characteristics were analysed in a subset of 221 patients, of whom 20 carried CHIP  
269 mutations. Glycan analysis was performed without knowing the CHIP status of the  
270 patients. We found the level of H5N4F1 ( $P = 0.038$ ) was significantly lower and the  
271 levels of H3N4F1 ( $P = 0.014$ ) and IgG Gal-ratio ( $P = 0.008$ ) (Gal-ratio =  
272  $H3N4F1/[H4N4F1+2*H5N4F1]$ ) were significantly higher in the CHIP group than in  
273 the non-CHIP group.

274

## 275 **Discussion**

276 The results of the present study significantly extend previous reports showing that  
277 CHIP-driver mutations are associated with the risk and prognosis of patients with  
278 cardiovascular diseases including coronary artery disease<sup>19</sup>, chronic heart failure<sup>35,36</sup>  
279 and degenerative aortic valve stenosis<sup>37</sup>. CHIP-related studies in PH were quite rare  
280 and previous studies focused only on the relationship between specific driver  
281 mutations (*TET2* and *JAK2V617F*)<sup>10,38,39</sup> and the risk of PH. To the best of our  
282 knowledge, this is the first study focused on a well-defined group of CTEPH patients  
283 to reveal an overview of CHIP-driver genes mutation with non-biased genome  
284 sequencing and to investigate its relationship with the prognosis of CTEPH patients.  
285 Our results demonstrate that CHIP-driver mutations occurred frequently in this patient  
286 population, were associated with more severe inflammatory states, and conferred

287 profoundly worse outcomes.

288

289 CHIP mutations can be identified in peripheral blood samples sequenced using  
290 approaches that cover the whole genome, whole exome or targeted genetic regions;  
291 however, differentiating true CHIP mutations from sequencing artifacts and germline  
292 variants is a considerable bioinformatic challenge. To increase the accuracy of CHIP  
293 calls, we referred to a step-wise method raised by Bick *et al.*<sup>23</sup>. This method combines  
294 filtering based on sequencing metrics, variant annotation, and population-based  
295 associations method to increase the fidelity of CHIP calls. With an identical calling  
296 approach, the prevalence of CHIP mutations in CTEPH patients is higher than in the  
297 age-paired healthy population in the “All of Us” Research Program, suggesting that  
298 CHIP mutations are enriched in patients with CTEPH. Interestingly, the most common  
299 mutations in this population are *DNMT3A*, *RUNX1* and *STAG2*, followed by *TET2*  
300 and other mutations, presenting a bit little different scenario from most previous  
301 reports. This difference could be blamed on the discrepancy in either diseases studied,  
302 population or sequencing and calling approaches.

303

304 In this study, the association of CHIP with mortality was observed in a univariate  
305 model. Consistent with previous studies, patients in the CHIP group are significantly  
306 older than the non-CHIP group, and CHIP effects were robust after adjustment for age  
307 and sex. NT-proBNP, CI, SvO<sub>2</sub>, WHO FC and 6MWD showed significant differences  
308 between the CHIP and non-CHIP groups, which may simply be a reflection of the age

309 difference between the groups. WHO FC, 6MWD, NT-proBNP, SvO<sub>2</sub>, right atrial  
310 pressure, CI, pulmonary vascular resistance and treatment regimens as well as age and  
311 sex were used to further adjust the model. Importantly, all-cause death still remained  
312 independently associated with the presence of somatic mutations associated with  
313 CHIP.

314

315 Recent studies based on CANTOS (Canakinumab Anti-Inflammatory Thrombosis  
316 Outcome Study) and UK Biobank reported that patients harboring *TET2* mutations  
317 showed a statistically significant reduced risk for incident major cardiovascular events  
318 by canakinumab, indicating that some patients with CHIP mutations especially *TET2*  
319 could potentially benefit from targeted anti-inflammatory therapy<sup>40,41</sup>. This is in line  
320 with previous works demonstrating increased levels of IL-6 and IL-1beta in *Tet2*  
321 loss-of-function mouse models<sup>19,28</sup>. In this study, levels of IL-1beta and IL-6 are  
322 higher in CHIP patients, implicating targeted anti-inflammatory therapy might benefit  
323 the subgroup of CTEPH patients with CHIP mutations.

324

325 Aside from inflammation mediated by myeloid cells, lymphoid cell-related immune  
326 activation was also found to be involved in CHIP-related pro-inflammatory effects.  
327 Mas-Peiro *et al.* reported that Th17 to regulatory T-cell ratios were augmented in  
328 aortic stenosis patients with *DNMT3A* mutations<sup>37</sup>. What's more, circulating  
329 monocytes and T cells of patients with heart failure harboring clonal  
330 hematopoiesis-driver mutations in *DNMT3A* exhibit a highly inflamed transcriptome<sup>42</sup>.

331 These may be in line with different lineage restrictions, which indicate a myeloid bias  
332 for *TET2*, but multipotent stem cell origin for *DNMT3A*<sup>43</sup>. *DNMT3A*-driven mutations  
333 prevailed in the patients of our cohort, so we further test the pro-inflammatory effects  
334 of CHIP from lymphoid perspectives.

335

336 IgG, the most abundant glycoprotein secreted by lymphoid cells and the main effector  
337 of humoral immunity<sup>44</sup>, plays a central role in human immune responses and is  
338 involved in inflammatory pathways. IgG regulates systemic inflammatory  
339 homeostasis at multiple levels primarily by its N-glycans<sup>45</sup>. Decreased galactosylation  
340 of IgG N-glycans is reported as a hallmark of inflammation<sup>34</sup>. Moreover, our  
341 preliminary research has found that IgG N-glycome in CTEPH presented a  
342 pro-inflammatory phenotype (up-regulated IgG Gal-ratio representing decreased IgG  
343 galactosylation), compared with healthy controls and IgG Gal-ratio is positively  
344 correlated with the level of NT-proBNP<sup>33</sup>. In this study, we found that patients in the  
345 CHIP group showed a more severe inflammatory state reflected by up-regulated IgG  
346 Gal-ratio, compared with that in the non-CHIP group, suggesting a probable  
347 relationship between CHIP and secreted IgG antibody phenotype. However, the  
348 causality and directionality of the link between the pro-inflammatory function of IgG  
349 and CHIP still require further investigation.

350

### 351 **Limitations**

352 Firstly, the current study focused on a thoroughly annotated clinical cohort of patients

353 with CTEPH. Although this is a comparably large clinical cohort of patients with  
354 CTEPH, the sample size is still limited. Secondly, considering the sensitivity of  
355 next-generation sequencing, the presence of CHIP was defined as the occurrence of  
356 mutations with a VAF of at least 0.02 in this study. However, the results of previous  
357 studies indicate that even lower VAFs may be associated with the development of  
358 various cardiovascular diseases. Further studies with more sensitive sequencing  
359 approaches are required to identify more specific thresholds of VAF for CTEPH  
360 patients. Lastly, the involvement of CHIP in the pathogenesis of CTEPH still needs to  
361 be further clarified in the future.

362

### 363 **Conclusion**

364 Our data demonstrated that CHIP mutations were enriched in CTEPH patients and  
365 represented an additional disease component in this disease that independently  
366 impacts prognosis.

367

### 368 **Acknowledgements**

#### 369 **Author Contributions**

370 Conception and design: ZCJ, ZJZ, CL, TYL, CYC; Analysis and interpretation of data:  
371 CL, ZJZ, LHQ, BCQ, LYR, JSM; Drafting of the manuscript: CL, ZJZ, YJY, CYC,  
372 YPW, YJZ; critical revision of the manuscript for important intellectual content: ZCJ,  
373 YPZ, TYL, SJZ; final approval of the manuscript: all authors; statistical expertise:  
374 DLW, KS; obtaining of research funding: ZCJ, ZJZ, YPZ; acquisition of data: ZYH,

375 JHL, QHZ, LW, XQX, RNL, JW.

376

### 377 **Sources of Funding**

378 This work was supported by grants from the CAMS Innovation Fund for Medical  
379 Sciences (2021-I2M-1-018), National Key Research and Development Program of  
380 China (2022YFC2703902), National Natural Science Foundation of China  
381 (82241020) , and National High Level Hospital Clinical Research Funding  
382 (2022-PUMCH-B-099 and 2022-PUMCH-A-200).

383

### 384 **Disclosures**

385 None

386

### 387 **Supplemental Materials**

388 Tables S1-S2

389

### 390 **References**

- 391 1. Delcroix M, Torbicki A, Gopalan D, Sitbon O, Klok FA, Lang I, Jenkins D,  
392 Kim NH, Humbert M, Jais X, et al. ERS statement on chronic thromboembolic  
393 pulmonary hypertension. *Eur Respir J.* 2021;57. doi:  
394 10.1183/13993003.02828-2020
- 395 2. Simonneau G, Montani D, Celermajer DS, Denton CP, Gatzoulis MA, Krowka  
396 M, Williams PG, Souza R. Haemodynamic definitions and updated clinical

- 397 classification of pulmonary hypertension. *Eur Respir J.* 2019;53. doi:  
398 10.1183/13993003.01913-2018
- 399 3. Quarck R, Wynants M, Verbeken E, Meyns B, Delcroix M. Contribution of  
400 inflammation and impaired angiogenesis to the pathobiology of chronic  
401 thromboembolic pulmonary hypertension. *Eur Respir J.* 2015;46:431-443. doi:  
402 10.1183/09031936.00009914
- 403 4. Bochenek ML, Rosinus NS, Lankeit M, Hobohm L, Bremmer F, Schutz E,  
404 Klok FA, Horke S, Wiedenroth CB, Munzel T, et al. From thrombosis to  
405 fibrosis in chronic thromboembolic pulmonary hypertension. *Thromb Haemost.*  
406 2017;117:769-783. doi: 10.1160/TH16-10-0790
- 407 5. Zabini D, Heinemann A, Foris V, Nagaraj C, Nierlich P, Balint Z,  
408 Kwapiszewska G, Lang IM, Klepetko W, Olschewski H, et al. Comprehensive  
409 analysis of inflammatory markers in chronic thromboembolic pulmonary  
410 hypertension patients. *Eur Respir J.* 2014;44:951-962. doi:  
411 10.1183/09031936.00145013
- 412 6. Yang M, Deng C, Wu D, Zhong Z, Lv X, Huang Z, Lian N, Liu K, Zhang Q.  
413 The role of mononuclear cell tissue factor and inflammatory cytokines in  
414 patients with chronic thromboembolic pulmonary hypertension. *J Thromb*  
415 *Thrombolysis.* 2016;42:38-45. doi: 10.1007/s11239-015-1323-2
- 416 7. Zia A, Russell J, Sarode R, Veeram SR, Josephs S, Malone K, Zhang S,  
417 Journeycake J. Markers of coagulation activation, inflammation and  
418 fibrinolysis as predictors of poor outcomes after pediatric venous

- 419 thromboembolism: A systematic review and meta-analysis. *Thromb Res.*  
420 2017;160:1-8. doi: 10.1016/j.thromres.2017.10.003
- 421 8. Satoh T, Satoh K, Yaoita N, Kikuchi N, Omura J, Kurosawa R, Numano K,  
422 Al-Mamun E, Siddique MA, Sunamura S, et al. Activated TAFI Promotes the  
423 Development of Chronic Thromboembolic Pulmonary Hypertension: A  
424 Possible Novel Therapeutic Target. *Circ Res.* 2017;120:1246-1262. doi:  
425 10.1161/CIRCRESAHA.117.310640
- 426 9. Yaoita N, Satoh K, Satoh T, Shimizu T, Saito S, Sugimura K, Tatebe S,  
427 Yamamoto S, Aoki T, Kikuchi N, et al. Identification of the Novel Variants in  
428 Patients With Chronic Thromboembolic Pulmonary Hypertension. *J Am Heart*  
429 *Assoc.* 2020;9:e015902. doi: 10.1161/JAHA.120.015902
- 430 10. Eichstaedt CA, Verweyen J, Halank M, Benjamin N, Fischer C, Mayer E,  
431 Guth S, Wiedenroth CB, Egenlauf B, Harutyunova S, et al. Myeloproliferative  
432 Diseases as Possible Risk Factor for Development of Chronic  
433 Thromboembolic Pulmonary Hypertension-A Genetic Study. *Int J Mol Sci.*  
434 2020;21. doi: 10.3390/ijms21093339
- 435 11. Hasselbalch HC, Elvers M, Schafer AI. The pathobiology of thrombosis,  
436 microvascular disease, and hemorrhage in the myeloproliferative neoplasms.  
437 *Blood.* 2021;137:2152-2160. doi: 10.1182/blood.2020008109
- 438 12. De Stefano V, Ruggeri M, Cervantes F, Alvarez-Larran A, Iurlo A, Randi ML,  
439 Elli E, Finazzi MC, Finazzi G, Zetterberg E, et al. High rate of recurrent  
440 venous thromboembolism in patients with myeloproliferative neoplasms and



- 441 effect of prophylaxis with vitamin K antagonists. *Leukemia*.  
442 2016;30:2032-2038. doi: 10.1038/leu.2016.85
- 443 13. Venton G, Turcanu M, Colle J, Thuny F, Chebrek S, Farnault L, Mercier C,  
444 Ivanov V, Fanciullino R, Suchon P, et al. Pulmonary hypertension in patients  
445 with myeloproliferative neoplasms: A large cohort of 183 patients. *Eur J*  
446 *Intern Med*. 2019;68:71-75. doi: 10.1016/j.ejim.2019.08.004
- 447 14. Genty T, Wirth C, Humbert M, Fadel E, Stephan F. Pulmonary  
448 Endarterectomy in Patients With Myeloproliferative Neoplasms. *Chest*.  
449 2022;161:552-556. doi: 10.1016/j.chest.2021.09.007
- 450 15. Steensma DP, Bejar R, Jaiswal S, Lindsley RC, Sekeres MA, Hasserrjian RP,  
451 Ebert BL. Clonal hematopoiesis of indeterminate potential and its distinction  
452 from myelodysplastic syndromes. *Blood*. 2015;126:9-16. doi:  
453 10.1182/blood-2015-03-631747
- 454 16. Leiva O, Hobbs G, Ravid K, Libby P. Cardiovascular Disease in  
455 Myeloproliferative Neoplasms: JACC: CardioOncology State-of-the-Art  
456 Review. *JACC CardioOncol*. 2022;4:166-182. doi:  
457 10.1016/j.jacc.2022.04.002
- 458 17. Jaiswal S, Ebert BL. Clonal hematopoiesis in human aging and disease.  
459 *Science*. 2019;366. doi: 10.1126/science.aan4673
- 460 18. Jaiswal S, Fontanillas P, Flannick J, Manning A, Grauman PV, Mar BG,  
461 Lindsley RC, Mermel CH, Burt N, Chavez A, et al. Age-related clonal  
462 hematopoiesis associated with adverse outcomes. *N Engl J Med*.

- 463 2014;371:2488-2498. doi: 10.1056/NEJMoa1408617
- 464 19. Jaiswal S, Natarajan P, Silver AJ, Gibson CJ, Bick AG, Shvartz E, McConkey  
465 M, Gupta N, Gabriel S, Ardissino D, et al. Clonal Hematopoiesis and Risk of  
466 Atherosclerotic Cardiovascular Disease. *N Engl J Med.* 2017;377:111-121. doi:  
467 10.1056/NEJMoa1701719
- 468 20. Honigberg MC, Zekavat SM, Niroula A, Griffin GK, Bick AG, Pirruccello JP,  
469 Nakao T, Whitsel EA, Farland LV, Laurie C, et al. Premature Menopause,  
470 Clonal Hematopoiesis, and Coronary Artery Disease in Postmenopausal  
471 Women. *Circulation.* 2021;143:410-423. doi:  
472 10.1161/CIRCULATIONAHA.120.051775
- 473 21. Yu B, Roberts MB, Raffield LM, Zekavat SM, Nguyen NQH, Biggs ML,  
474 Brown MR, Griffin G, Desai P, Correa A, et al. Supplemental Association of  
475 Clonal Hematopoiesis With Incident Heart Failure. *J Am Coll Cardiol.*  
476 2021;78:42-52. doi: 10.1016/j.jacc.2021.04.085
- 477 22. Galie N, Humbert M, Vachiery JL, Gibbs S, Lang I, Torbicki A, Simonneau G,  
478 Peacock A, Vonk Noordegraaf A, Beghetti M, et al. 2015 ESC/ERS Guidelines  
479 for the diagnosis and treatment of pulmonary hypertension: The Joint Task  
480 Force for the Diagnosis and Treatment of Pulmonary Hypertension of the  
481 European Society of Cardiology (ESC) and the European Respiratory Society  
482 (ERS): Endorsed by: Association for European Paediatric and Congenital  
483 Cardiology (AEPC), International Society for Heart and Lung Transplantation  
484 (ISHLT). *Eur Heart J.* 2016;37:67-119. doi: 10.1093/eurheartj/ehv317

- 485 23. Vlasschaert C, Mack T, Heimlich JB, Niroula A, Uddin MM, Weinstock J,  
486 Sharber B, Silver AJ, Xu Y, Savona M, et al. A practical approach to curate  
487 clonal hematopoiesis of indeterminate potential in human genetic data sets.  
488 *Blood*. 2023;141:2214-2223. doi: 10.1182/blood.2022018825
- 489 24. Cibulskis K, Lawrence MS, Carter SL, Sivachenko A, Jaffe D, Sougnez C,  
490 Gabriel S, Meyerson M, Lander ES, Getz G. Sensitive detection of somatic  
491 point mutations in impure and heterogeneous cancer samples. *Nat Biotechnol*.  
492 2013;31:213-219. doi: 10.1038/nbt.2514
- 493 25. Tang J, Liu H, Sun M, Zhang X, Chu H, Li Q, Prokosch V, Cui H. Aqueous  
494 Humor Cytokine Response in the Contralateral Eye after First-Eye Cataract  
495 Surgery in Patients with Primary Angle-Closure Glaucoma, High Myopia or  
496 Type 2 Diabetes Mellitus. *Front Biosci (Landmark Ed)*. 2022;27:222. doi:  
497 10.31083/j.fbl2707222
- 498 26. Ren S, Zhang Z, Xu C, Guo L, Lu R, Sun Y, Guo J, Qin R, Qin W, Gu J.  
499 Distribution of IgG galactosylation as a promising biomarker for cancer  
500 screening in multiple cancer types. *Cell Res*. 2016;26:963-966. doi:  
501 10.1038/cr.2016.83
- 502 27. Qian Y, Wang Y, Zhang X, Zhou L, Zhang Z, Xu J, Ruan Y, Ren S, Xu C, Gu J.  
503 Quantitative analysis of serum IgG galactosylation assists differential  
504 diagnosis of ovarian cancer. *J Proteome Res*. 2013;12:4046-4055. doi:  
505 10.1021/pr4003992
- 506 28. Fuster JJ, MacLauchlan S, Zuriaga MA, Polackal MN, Ostriker AC,

- 507 Chakraborty R, Wu CL, Sano S, Muralidharan S, Rius C, et al. Clonal  
508 hematopoiesis associated with TET2 deficiency accelerates atherosclerosis  
509 development in mice. *Science*. 2017;355:842-847. doi:  
510 10.1126/science.aag1381
- 511 29. Sano S, Oshima K, Wang Y, Katanasaka Y, Sano M, Walsh K.  
512 CRISPR-Mediated Gene Editing to Assess the Roles of Tet2 and Dnmt3a in  
513 Clonal Hematopoiesis and Cardiovascular Disease. *Circ Res*.  
514 2018;123:335-341. doi: 10.1161/CIRCRESAHA.118.313225
- 515 30. Sano S, Oshima K, Wang Y, MacLauchlan S, Katanasaka Y, Sano M, Zuriaga  
516 MA, Yoshiyama M, Goukassian D, Cooper MA, et al. Tet2-Mediated Clonal  
517 Hematopoiesis Accelerates Heart Failure Through a Mechanism Involving the  
518 IL-1beta/NLRP3 Inflammasome. *J Am Coll Cardiol*. 2018;71:875-886. doi:  
519 10.1016/j.jacc.2017.12.037
- 520 31. Bohme M, Desch S, Rosolowski M, Scholz M, Krohn K, Buttner P, Cross M,  
521 Kirchberg J, Rommel KP, Poss J, et al. Impact of Clonal Hematopoiesis in  
522 Patients With Cardiogenic Shock Complicating Acute Myocardial Infarction. *J*  
523 *Am Coll Cardiol*. 2022;80:1545-1556. doi: 10.1016/j.jacc.2022.08.740
- 524 32. Abplanalp WT, Mas-Peiro S, Cremer S, John D, Dimmeler S, Zeiher AM.  
525 Association of Clonal Hematopoiesis of Indeterminate Potential With  
526 Inflammatory Gene Expression in Patients With Severe Degenerative Aortic  
527 Valve Stenosis or Chronic Postischemic Heart Failure. *JAMA Cardiol*.  
528 2020;5:1170-1175. doi: 10.1001/jamacardio.2020.2468

- 529 33. Zhang Z, Wang H, Lian T, Zhou Y, Xu X, Guo F, Wei Y, Li J, Sun K, Liu C, et  
530 al. Human Plasma Immunoglobulin G N-Glycome Profiles Reveal a  
531 Pro-Inflammatory Phenotype in Chronic Thromboembolic Pulmonary  
532 Hypertension: A Cross-Sectional Study of Two Independent Cohorts. *SSRN*  
533 *preprint*. 2023. doi: 10.2139/ssrn.4366881
- 534 34. Plomp R, Ruhaak LR, Uh HW, Reiding KR, Selman M, Houwing-Duistermaat  
535 JJ, Slagboom PE, Beekman M, Wuhrer M. Subclass-specific IgG  
536 glycosylation is associated with markers of inflammation and metabolic health.  
537 *Sci Rep*. 2017;7:12325. doi: 10.1038/s41598-017-12495-0
- 538 35. Dorsheimer L, Assmus B, Rasper T, Ortmann CA, Ecke A, Abou-El-Ardat K,  
539 Schmid T, Brune B, Wagner S, Serve H, et al. Association of Mutations  
540 Contributing to Clonal Hematopoiesis With Prognosis in Chronic Ischemic  
541 Heart Failure. *JAMA Cardiol*. 2019;4:25-33. doi:  
542 10.1001/jamacardio.2018.3965
- 543 36. Pascual-Figal DA, Bayes-Genis A, Diez-Diez M, Hernandez-Vicente A,  
544 Vazquez-Andres D, de la Barrera J, Vazquez E, Quintas A, Zuriaga MA,  
545 Asensio-Lopez MC, et al. Clonal Hematopoiesis and Risk of Progression of  
546 Heart Failure With Reduced Left Ventricular Ejection Fraction. *J Am Coll*  
547 *Cardiol*. 2021;77:1747-1759. doi: 10.1016/j.jacc.2021.02.028
- 548 37. Mas-Peiro S, Hoffmann J, Fichtlscherer S, Dorsheimer L, Rieger MA,  
549 Dimmeler S, Vasa-Nicotera M, Zeiher AM. Clonal haematopoiesis in patients  
550 with degenerative aortic valve stenosis undergoing transcatheter aortic valve

- 551           implantation. *Eur Heart J.* 2020;41:933-939. doi: 10.1093/eurheartj/ehz591
- 552   38.   Potus F, Pauciulo MW, Cook EK, Zhu N, Hsieh A, Welch CL, Shen Y, Tian L,  
553       Lima P, Mewburn J, et al. Novel Mutations and Decreased Expression of the  
554       Epigenetic Regulator TET2 in Pulmonary Arterial Hypertension. *Circulation.*  
555       2020;141:1986-2000. doi: 10.1161/CIRCULATIONAHA.119.044320
- 556   39.   Kimishima Y, Misaka T, Yokokawa T, Wada K, Ueda K, Sugimoto K,  
557       Minakawa K, Nakazato K, Ishida T, Oshima M, et al. Clonal hematopoiesis  
558       with JAK2V617F promotes pulmonary hypertension with ALK1 upregulation  
559       in lung neutrophils. *Nat Commun.* 2021;12:6177. doi:  
560       10.1038/s41467-021-26435-0
- 561   40.   Svensson EC, Madar A, Campbell CD, He Y, Sultan M, Healey ML, Xu H,  
562       D'Aco K, Fernandez A, Wache-Mainier C, et al. TET2-Driven Clonal  
563       Hematopoiesis and Response to Canakinumab: An Exploratory Analysis of the  
564       CANTOS Randomized Clinical Trial. *JAMA Cardiol.* 2022;7:521-528. doi:  
565       10.1001/jamacardio.2022.0386
- 566   41.   Vlasschaert C, Heimlich JB, Rauh MJ, Natarajan P, Bick AG. Interleukin-6  
567       Receptor Polymorphism Attenuates Clonal Hematopoiesis-Mediated Coronary  
568       Artery Disease Risk Among 451 180 Individuals in the UK Biobank.  
569       *Circulation.*                           2023;147:358-360.                   doi:  
570       10.1161/CIRCULATIONAHA.122.062126
- 571   42.   Abplanalp WT, Cremer S, John D, Hoffmann J, Schuhmacher B, Merten M,  
572       Rieger MA, Vasa-Nicotera M, Zeiher AM, Dimmeler S. Clonal

- 573 Hematopoiesis-Driver DNMT3A Mutations Alter Immune Cells in Heart  
574 Failure. *Circ Res.* 2021;128:216-228. doi:  
575 10.1161/CIRCRESAHA.120.317104
- 576 43. Buscarlet M, Provost S, Zada YF, Bourgoin V, Mollica L, Dube MP, Busque L.  
577 Lineage restriction analyses in CHIP indicate myeloid bias for TET2 and  
578 multipotent stem cell origin for DNMT3A. *Blood.* 2018;132:277-280. doi:  
579 10.1182/blood-2018-01-829937
- 580 44. Vidarsson G, Dekkers G, Rispens T. IgG subclasses and allotypes: from  
581 structure to effector functions. *Front Immunol.* 2014;5:520. doi:  
582 10.3389/fimmu.2014.00520
- 583 45. Gudelj I, Lauc G, Pezer M. Immunoglobulin G glycosylation in aging and  
584 diseases. *Cell Immunol.* 2018;333:65-79. doi: 10.1016/j.cellimm.2018.07.009  
585  
586

587 **Table 1.** Characteristics of CTEPH patients stratified according to CHIP status.

	<b>Total cohort (n = 499)</b>	<b>CHIP (n = 51)</b>	<b>Non-CHIP (n = 448)</b>	<b>P value</b>
<b>Demographic variables</b>				
Age, y	54.4 ± 14.8	58.4 ± 13.4	54.0 ± 14.9	<b>0.045</b>
Male	248 (49.7)	23 (44.9)	225 (50.2)	0.488
Diagnostic delay, mo	24.6 (11.8 - 60.9)	26.2 (11.6 - 61.7)	24.5 (11.6 - 60.9)	0.962
Blood group non-O	395 (79.2)	42 (81.8)	353 (78.8)	0.553
Prior VTE history	360 (72.1)	39 (76.5)	321 (71.7)	0.467
Recurrent VTE history	34 (6.8)	4 (7.8)	30 (6.7)	0.758
<b>Comorbid conditions</b>				
Thrombophilia disorders	38 (7.6)	3 (5.9)	35 (7.8)	0.622
APS	30 (6.0)	3 (5.9)	27 (6.0)	0.967
Pacemaker	1 (0.2)	0 (0.0)	1 (0.2)	0.736
Splenectomy	4 (0.8)	0 (0.0)	4 (0.9)	0.498
Active cancer	6 (1.2)	0 (0.0)	6 (1.3)	0.406
Renal insufficiency	23 (4.6)	4 (7.8)	19 (4.2)	0.245
Coronary artery disease	29 (5.8)	4 (7.8)	25 (5.6)	0.513
Ischemic stroke	27 (5.4)	1 (2.0)	26 (5.8)	0.25
Diabetes	23 (4.6)	2 (3.9)	21 (4.7)	0.805
Anemia	26 (5.2)	3 (5.9)	23 (5.1)	0.82
<b>Clinical variables</b>				
WHO FC (III - IV)	320 (64.1)	42 (82.4)	278 (62.1)	<b>0.004</b>
6MWD, m	384.2 ± 116.3	335.7 ± 127.0	389.3 ± 114.2	<b>0.013</b>
NT-proBNP, pg/mL	1,161.0 (292.0 - 2,863.3)	1,886.0 (754.8 - 3,787.9)	1,104.5 (268.0 - 2,820.0)	<b>0.019</b>
D-dimer, ng/mL	450.0 (200.0 - 1020.0)	610.0 (330.0 - 1540.0)	420.0 (190.0 - 970.0)	<b>0.012</b>
Hgb, mg/L	146.8 ± 21.5	143.1 ± 23.1	147.2 ± 21.3	0.348
Plt, /μL	198.9 ± 70.3	194.1 ± 72.6	199.5 ± 70.1	0.663



WBC, /mL	6.3 ± 2.0	6.4 ± 2.2	6.3 ± 2.0	0.691
<b>Hemodynamics</b>				
RAP, mm Hg	8.3 ± 5.4	9.7 ± 6.9	8.1 ± 5.2	0.142
mPAP, mm Hg	49.1 ± 12.1	48.8 ± 10.9	49.2 ± 12.3	0.839
PAWP, mm Hg	9.8 ± 3.4	10.3 ± 4.0	9.7 ± 3.3	0.324
PVR, Wood units	9.5 ± 4.7	10.1 ± 4.3	9.5 ± 4.7	0.382
CI, L/min/m <sup>2</sup>	2.6 ± 0.7	2.3 ± 0.5	2.6 ± 0.7	<b>0.015</b>
SvO <sub>2</sub> , %	62.1 ± 8.5	58.4 ± 10.0	62.5 ± 8.3	<b>0.002</b>
<b>Treatments</b>				
Drugs approved for PAH	468 (93.8)	48 (94.1)	420 (93.8)	0.918
BPA or PEA	273 (54.7)	25 (49.0)	248 (55.4)	0.389
BPA	198 (39.7)	18 ( 35.3)	180 (40.2)	0.499
PEA	106 (21.2)	13 (25.5)	93 (20.8)	0.434

588 *P* values in bold represent statistical significance of Student's t-test or Mann-Whitney U-test for quantitative

589 variables and fisher exact test for qualitative variables between CHIP and non-CHIP groups.

590 6MWD = 6-minute walking distance; APS = antiphospholipid syndrome; BPA = balloon pulmonary angioplasty;

591 CHIP = clonal hematopoiesis of indeterminate potential; CI = cardiac index; CTEPH = chronic thromboembolic

592 pulmonary hypertension; Hgb = hemoglobin; mPAP = mean pulmonary artery pressure; NT-proBNP = N-terminal

593 pro-B-type natriuretic peptide; PAWP = pulmonary artery wedge pressure; PEA = pulmonary endarterectomy; PH

594 = pulmonary hypertension; Plt = platelet; PVR = pulmonary vascular resistance; RAP= right atrial pressure; SvO<sub>2</sub>

595 = mixed venous oxygen saturation; VTE = venous thromboembolism; WBC = white blood cell; WHO FC = World

596 Health Organization functional class.

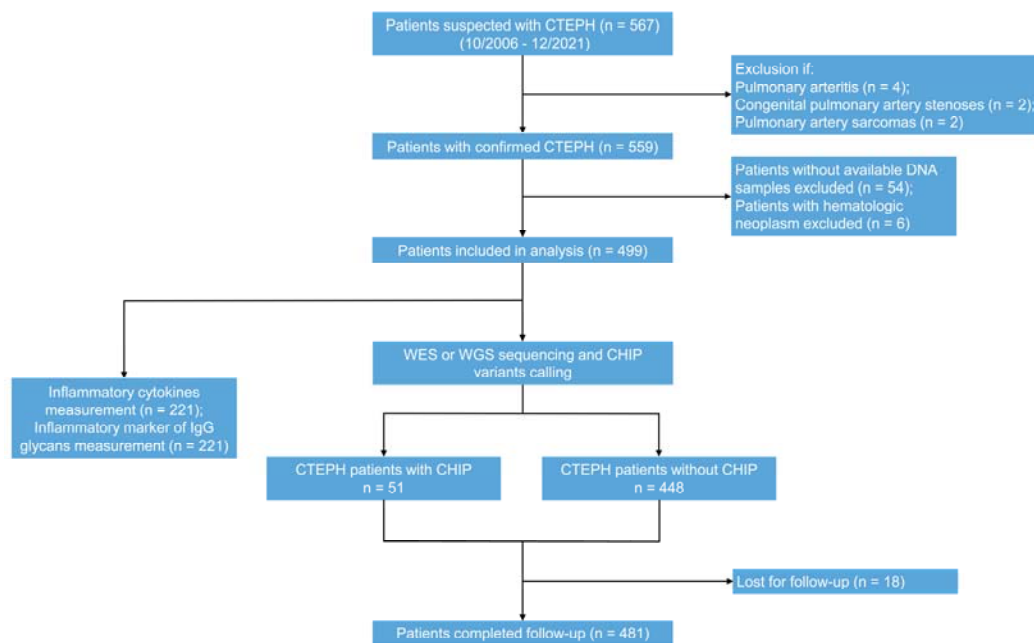
597

598 **Table 2.** Results of multivariable Cox proportional hazards models examining the  
599 relation of CHIP to the risk of all-cause death.

	CHIP vs Non-CHIP HR (95% CI)	<i>P</i>
Model 1	2.290 (1.428 - 3.672)	<0.001
Model 2	2.161 (1.342 - 3.479)	0.002
Model 3	2.636 (1.415 - 4.912)	0.002
Model 4	3.447 (1.747 - 6.803)	<0.001

600 Model 1: unadjusted; Model 2: adjusted for age and sex; Model 3: adjusted for age, sex, 6MWD, WHO FC,  
601 NT-proBNP, RAP, SvO<sub>2</sub>, PVR and CI; Model 4: adjusted for age, sex, 6MWD, WHO FC, NT-proBNP, RAP, SvO<sub>2</sub>,  
602 PVR, CI and treatment regimens. Treatment regimens represents whether or not patients underwent PEA/BPA  
603 treatments. 6MWD = 6-minute walking distance; CHIP = clonal hematopoiesis of indeterminate potential; CI =  
604 cardiac index; HR = hazard ratio; NT-proBNP = N-terminal pro-B-type natriuretic peptide; PVR = pulmonary  
605 vascular resistance; RAP = right atrial pressure; SvO<sub>2</sub> = mixed venous oxygen saturation; WHO FC = World  
606 Health Organization functional class.

607 **Figures**



608

609 **Figure 1.** Diagram showing the selection of patients with CTEPH in the present study.

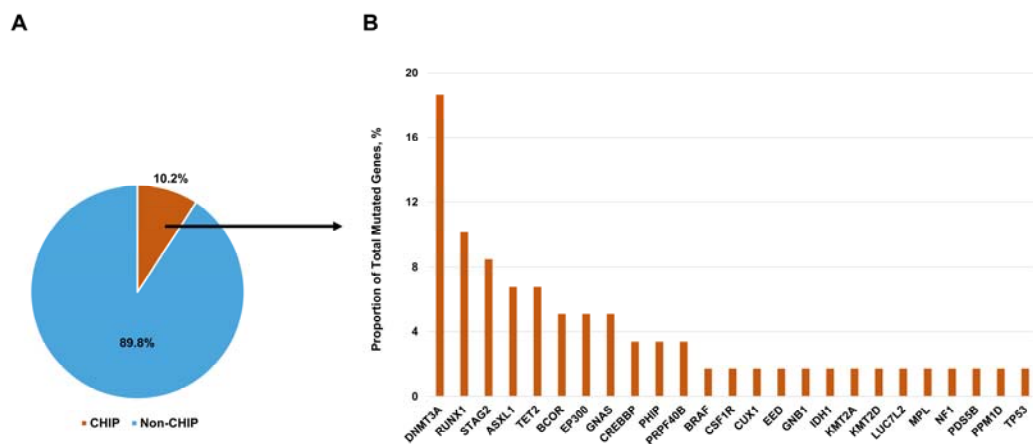
610 CHIP = clonal hematopoiesis of indeterminate potential; CTEPH = chronic

611 thromboembolic pulmonary hypertension. WES: whole-exome sequencing; WGS:

612 whole-genome sequencing.

613

614



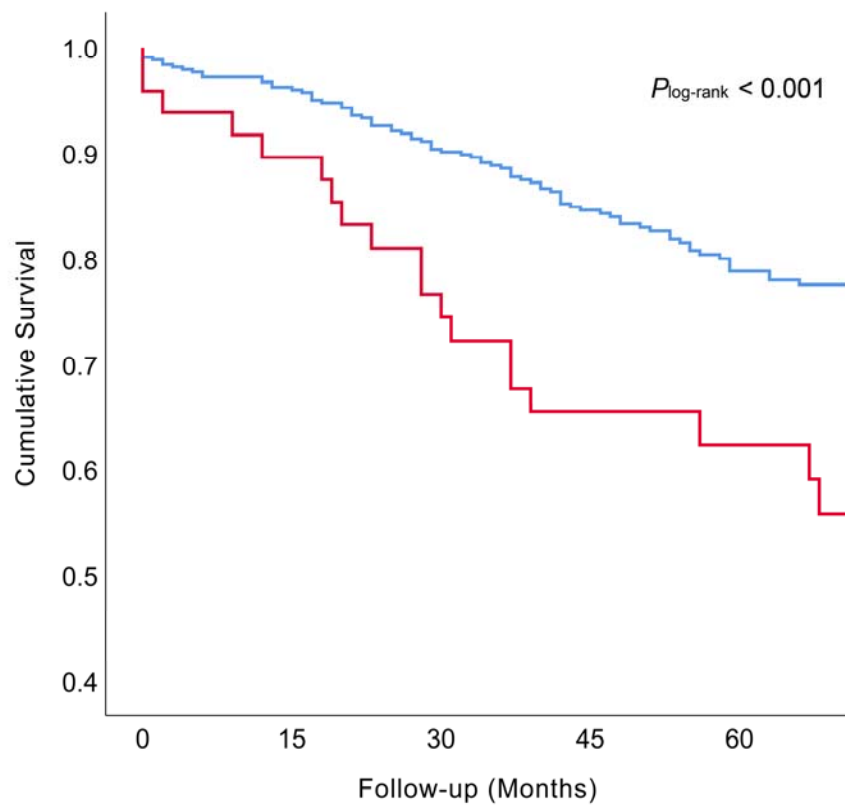
615

616 **Figure 2.** The proportion of CHIP-related mutated genes in patients with chronic

617 thromboembolic pulmonary hypertension. CHIP = clonal hematopoiesis of

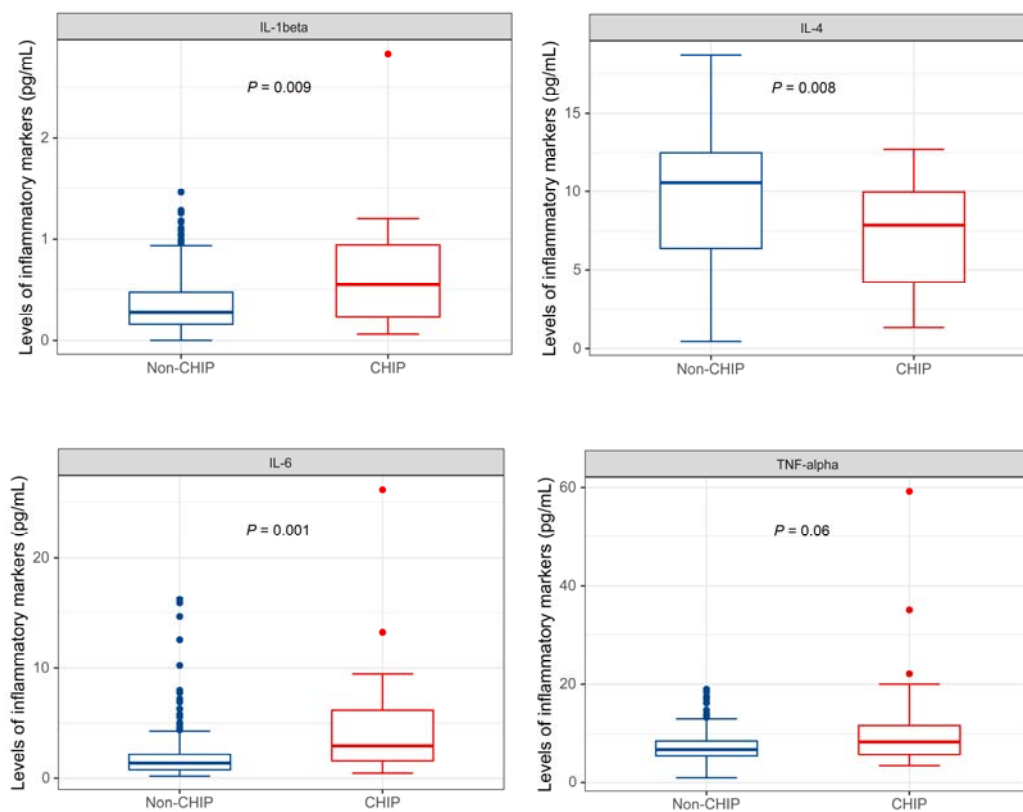
618 indeterminate potential.

619



		Patients at risk (n)				
		0	15	30	45	60
620	— Non-CHIP	432	400	358	275	195
	— CHIP	49	42	35	24	20

621 **Figure 3.** Kaplan-Meier survival curve for all-cause death stratified by CHIP status in  
622 chronic thromboembolic pulmonary hypertension. CHIP = clonal hematopoiesis of  
623 indeterminate potential.  
624

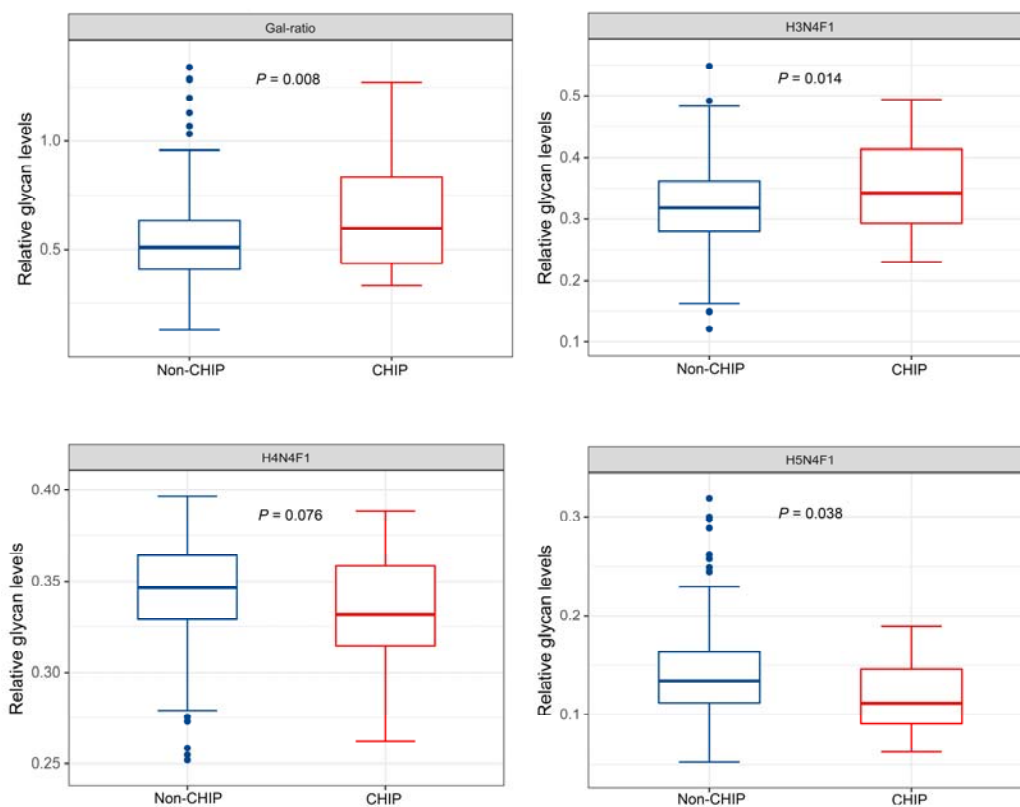


625

626 **Figure 4.** Inflammatory cytokines characteristics in patients of CHIP group/non-CHIP

627 group. CHIP = clonal hematopoiesis of indeterminate potential.

628



629

630 **Figure 5.** Inflammatory markers of IgG galactosylation distribution in CHIP

631 group/non-CHIP group patients. CHIP = clonal hematopoiesis of indeterminate

632 potential.

633