

1 A systematic literature review of methodological approaches, challenges, and opportunities
2 in the application of Mendelian randomisation to lifecourse epidemiology.

3

4

5 Grace M. Power^{1*}, Eleanor Sanderson¹, Panagiota Pagoni¹, Abigail Fraser¹, Tim Morris¹, Claire

6 Prince¹, Timothy M. Frayling², Jon Heron¹, Tom G. Richardson¹, Rebecca Richmond¹, Jessica

7 Tyrrell², George Davey Smith¹, Laura D. Howe^{1¶}, Kate Tilling^{1¶}

8

9 ¹ *MRC Integrative Epidemiology Unit, Population Health Sciences, Bristol Medical School,*

10 *University of Bristol, Bristol, UK.*

11 ² *Genetics of Complex Traits, College of Medicine and Health, University of Exeter, Exeter, UK.*

12

13 ¶ These authors contributed equally as last authors to this work

14

15 * Corresponding author: Grace M Power - grace.power@bristol.ac.uk - +44 (0)117 331 0098

16 MRC Integrative Epidemiology Unit, University of Bristol, Oakfield House, Oakfield Grove,

17 Bristol, BS8 2BN, United Kingdom

18

19

20

21

22

23

24 **Abstract**

25

26 Background: Diseases diagnosed in adulthood may have antecedents throughout – including
27 prenatal – life. Gaining a better understanding of how exposures at different stages in the
28 lifecourse influence health outcomes is key to elucidating the potential benefits of specific
29 disease prevention strategies. However, confounding is highly likely in studies with earlier life
30 or time-varying exposures. Mendelian randomisation (MR) is therefore increasingly used to
31 estimate causal effects of exposures across the lifecourse on later life outcomes.

32 Methods: This systematic literature review aims to identify MR methods used to perform
33 lifecourse investigations and review previous work that has utilised MR to elucidate the effects
34 of factors acting at different stages of the lifecourse. We conducted a systematic search in
35 PubMed, Embase, Medline and MedRXiv databases to comprehensively obtain lifecourse
36 epidemiology studies that have employed MR.

37 Results: Thirteen methodological studies were identified. Four studies focused on the impact
38 of time-varying exposures on the interpretation of “standard” MR techniques, five presented
39 methods for analysing repeat measures of the same exposure, and four described novel
40 methodological approaches to handling parental exposures in relation to offspring outcomes.
41 A further 84 studies presented the results of an applied research question with relevance to
42 lifecourse epidemiology. Over half of these estimated effects in a single generation and were
43 largely confined to the exploration of questions regarding body composition. Of the one
44 generational studies employed in this review, 59% estimated the effect of exposures at birth,
45 birth to/and childhood, birth to/and adolescence or birth to/and adulthood, 30% at childhood,
46 childhood to/and adolescence or childhood to/and adulthood, and 11% at adolescence or
47 adulthood. The remaining looked across two generations. These estimated effects of maternal

48 exposures, with one study additionally examining paternal exposures, in relation to offspring
49 outcomes.

50 Conclusion: There is a growing body of research focused on the development and application
51 of MR methods to address lifecourse research questions. The possibility that genetic effects
52 have different levels of importance in the progression of an exposure at different ages should
53 be more commonly considered for application in an MR context. Limitations exist, however,
54 specifically regarding data constraints.

55

56 **Keywords:** lifecourse, Mendelian randomisation, systematic literature review, methodology

57

58

59

60

61

62

63

64

65

66

67

68

69

70

71

72 **Introduction:**

73

74 Diseases diagnosed in adulthood often have antecedents throughout – including prenatal – life
75 (1). A lifecourse approach recognises the contribution of physical or social exposures acting
76 during gestation, childhood, adolescence, and earlier or adult life or across generations to long-
77 term biological, behavioural, and psychosocial processes that link adult health and disease risk
78 (2, 3). Gaining a better understanding of how exposures at different stages in the lifecourse
79 influence health outcomes is key to elucidating the potential benefits of specific disease
80 prevention strategies. However, confounding is highly likely in studies with earlier life and time-
81 varying exposures and later life health outcomes (4), particularly time-varying confounding and
82 intermediate (or mediator-outcome) confounding (5). Intergenerational and family level
83 factors may also contribute to further distinctive sources of confounding in multigenerational
84 studies. Approaches to interrogate causality by minimising confounding are therefore of
85 importance to strengthen causal inference in a lifecourse setting (6, 7).

86

87 Mendelian randomisation (MR) exploits the random assortment of genetic variants,
88 independent of other traits, to enable analyses that largely mitigate against distortions
89 resulting from confounding and reverse causality (8). This is a key motivation behind using a
90 MR approach, which estimates the causal effect of modifiable risk factors under three
91 assumptions; the instrumental variables used must i) be associated with the exposure of
92 interest ('relevance'), ii) not share common causes with the outcome ('independence' or
93 'exchangeability') and iii) not affect the outcome other than through the exposure ('exclusion').
94 Several statistical methods have been proposed for MR with individual-level as well as
95 summarised data. In a one-sample setting with individual-level data, a causal effect estimate is

96 often obtained using the two-stage least-squares (2SLS) method (9). It is more common for
97 two-sample investigations to use summarized data. In addition, at the introduction of MR, it
98 was recognised that the association of genetic variants with exposures could change with age,
99 which needed to be taken into account in interpretation (10, 11).

100

101 The application of MR to lifecourse research questions has two key challenges. Firstly, we are
102 interested in isolating the causal effects of age-specific exposures. MR studies typically use a
103 single measurement of an exposure to estimate its effects on an outcome (henceforth termed
104 “standard” MR) and genes are invariable across the lifecourse. As such, results obtained are
105 often interpreted as the average lifetime effect of the genetically predicted exposure, or
106 genetic liability for an exposure if that exposure is binary (12). Whilst this approach is sufficient
107 for some exposures, it requires extension to address lifecourse questions. This extension is
108 possible in cases where inherited genetic variants have different effects at different timepoints
109 in the lifecourse (within a population), allowing us to separate time-varying effects of certain
110 exposures (13-15). Secondly, some lifecourse research questions involve the exploration of
111 parental exposures. The inclusion of multiple generations brings additional analytical and
112 methodological challenges due to common confounding and genetic relatedness.

113

114 This systematic literature review has two core aims. Firstly, to identify MR methods that have
115 been developed to evaluate or conduct lifecourse epidemiological investigation and secondly,
116 to systematically review previous work that has utilised MR to elucidate the impacts of risk
117 factors from different stages of the lifecourse on later life outcomes. These studies fulfil the
118 criteria outlined in the STROBE-MR guidelines, and specifically respond to the criterion of

119 whether effect estimates previously derived would generalise to other exposure periods (16,
120 17).

121

122 **Methods:**

123

124 ***1. Search strategy and eligibility criteria***

125

126 The protocol for this systematic literature review was registered in the International
127 Prospective Register of Systematic Reviews (PROSPERO) as CRD42022314287 and was
128 conducted in line with the 2020 Preferred Reporting Items for Systematic Reviews and Meta-
129 Analyses (PRISMA) guidelines (18). We searched for lifecourse epidemiology studies, defined
130 as studies investigating biological, behavioural, and psychosocial processes that link health and
131 disease risk to exposures that take place in a preceding life stage. For example, studies relating
132 pre-gestation, gestation, early life, childhood, or adolescence exposures to adult outcomes
133 would be included. Studies linking adult exposures to adult outcomes would be included if the
134 adult exposure is related to a particular stage/phase of adulthood, such as menopause, as long
135 as this stage/phase predates the outcome under study. We also include in our definition of
136 lifecourse studies the effects of repeated measures of the same time-varying exposure on a
137 later outcome (See Supplementary Material 1) (19). Studies were eligible from any
138 geographical location, with individuals from any age group and which included a MR study
139 design (i.e., a study using genetic variants to determine whether there is a causal relationship
140 between a modifiable risk factor and an outcome). We include as an “MR study” any study that
141 uses genetic variants related to an exposure of interest to understand the causal nature of the
142 relationship between that exposure and an outcome of interest. This includes studies where

143 the genetic variants are used as an instrumental variable, and those where the association
144 between the genetic variants and the outcome under study is analysed outside of an
145 instrumental variable framework. Searches included any papers published prior to 4 March
146 2022 in MEDLINE (PubMed), Embase (Ovid), Medline (Ovid) and MedRxiv. The search and full-
147 text review were restricted to articles published in English. Outcome measures were any
148 measure of health status or disease from a life stage after the exposure was measured. Study
149 designs that do not use MR methods were not appraised. Treatment guidelines documents
150 were excluded (Supplementary Material 2).

151

152 ***2. Data extraction and analysis***

153 Within the final list of papers, we separated methodological manuscripts that presented or
154 tested an approach to lifecourse MR from applied papers that only presented the results of a
155 specific lifecourse analysis. For data collected from methodological manuscripts that presented
156 or tested an approach to lifecourse MR we recorded: author, baseline year of data collection,
157 aim, methodological approach, challenges in methodological application, simulation scenarios,
158 sample size, and assumptions, and when an applied element was included in the manuscript,
159 exposure, exposure age(s) in years, outcome and outcome age(s) in years were collected. We
160 extracted the following from applied studies that presented the results of a specific lifecourse
161 analysis: author, baseline year of data collection, aim, exposure, exposure age(s) in years,
162 outcome and outcome age(s) in years. Title and abstract and then full-text screening was
163 conducted in duplicate by two investigators (G.M.P and P.P.) and extraction in duplicate by two
164 investigators (G.M.P and C.P.). Discrepancies were resolved by consensus. A narrative synthesis
165 was performed. The evaluation of study quality by conducting a bias assessment was not

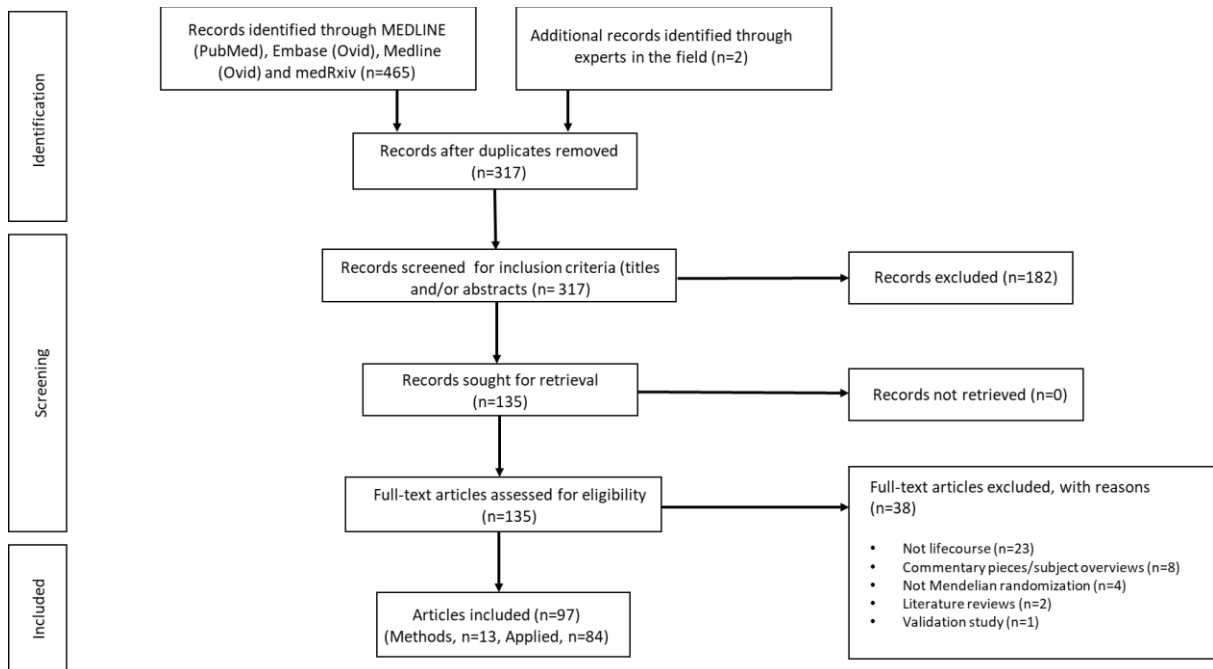
166 considered relevant here, since we were not collating evidence to answer one applied question
167 (20, 21).

168

169 **Results:**

170

171 Our search generated 317 published records. Two additional records were identified through
172 conversations with experts in the field. After screening titles and abstracts, 135 manuscripts
173 were assessed for eligibility. Of these, 97 articles were deemed eligible for inclusion in this
174 systematic review (Figure 1). Thirteen studies presented or tested an approach to lifecourse
175 MR (12-15, 22-30) and 84 presented the results of a specific lifecourse analysis without an
176 emphasis on exploring or explaining a methodological approach (31-114). If a study fit the
177 criteria for the former section, it was not included in the latter.



178

179 **Figure 1.** PRISMA flow chart illustrating selection of studies. PRISMA, Preferred Reporting Items

180 for Systematic Reviews and Meta-Analyses

181

182 **Section 1: Studies presenting or testing an approach to lifecourse MR**

183

184 Of the 13 studies presenting and/or testing approaches to lifecourse MR, four focused on the
185 impact of time-varying exposures on the interpretations of “standard” MR techniques (12, 23,
186 26, 27). These additionally outline methods to assess and/or lessen potential bias. Five
187 presented methods for analysing repeat measures of the same exposure. These comprised
188 functional principal component (FPC) analysis through conditional expectation (PACE),
189 multivariable MR (MVMR), G-estimation of structural nested cumulative failure models
190 (SNCFTMs) and G-estimation of structural mean models (SMM) (13, 15, 22, 25, 28). Our
191 definition of lifecourse studies, which includes the effects of repeated measures of the same
192 time-varying exposure on a later outcome, connects lifecourse MR to G-estimation, which has
193 been applied in several studies to adjust for time-varying confounding in traditional
194 epidemiological settings (115, 116). Furthermore, four studies described novel methods that
195 have been developed for intergenerational studies investigating a parental or grandparental
196 exposure whilst the outcome of interest is assessed in offspring. These have used structural
197 equation models (SEM) or the statistically equivalent linear mixed model (LMM) (14, 24, 29).

198

199 1. Implications of time-varying exposures for the interpretation of “standard” MR

200

201 There are potential limitations regarding the use of “standard” MR techniques to interpret
202 exposure-outcome relationships. D’Urso et al. (2020) highlight issues when using MR to assess
203 the validity of hypotheses relating to the Developmental Origins of Health and Disease
204 (DOHaD), such as the Barker hypothesis, which proposes that the origins of chronic diseases of
205 adult life lie in foetal responses to the intrauterine environment (26). “Standard” MR methods

206 do not take into account the relationship between maternal and offspring genotypes and, as a
207 result, may produce inflated type 1 error rates. Standard errors may be too small in the
208 presence of cryptic relatedness due to there being less genetic variation in the sample. A
209 conditional analysis framework is recommended using an unweighted or weighted maternal
210 allele score corrected for offspring genotypes (26).

211

212 Results from “standard” MR techniques are often interpreted as average lifetime effects of the
213 exposure, i.e., the cumulative effect of the exposure level from conception and through the
214 lifecourse. Labrecque et al. propose an alternative interpretation for exposures that vary over
215 time. They suggest the effect should be interpreted using a counterfactual framework
216 approach, shifting the entire exposure trajectory by one unit of time k (a timepoint of
217 observation, where $k=0$ at conception) (23). Labrecque et al. argue that different effects would
218 be estimated at different exposure time points if the relationship between the genetic variants
219 and the exposure changes over time. Thus, a “standard” MR approach may produce biased
220 results. They initially provided an empirical example to estimate the lifetime effect of body
221 mass index (BMI) on systolic blood pressure using the rs9939609 variant. They then simulated
222 a longitudinal relationship to estimate BMI as an exposure at age 30 and 50 years and
223 concluded that when the genetic variable-exposure relationship was constant over time,
224 estimates were unbiased with respect to the lifetime effect at both ages. In all other scenarios,
225 however, they show the estimate differed, and this bias was sensitive to the strength of
226 relationship between the genetic variant and exposure as well as the timing of measurement
227 of both exposure window and outcome.

228

229 Previous studies have explored whether age modifies the relationship between the genetic
230 variants and exposure (10), however, investigations are limited. Most studies that have
231 addressed this have investigated body composition, BMI or other measures of body size. To
232 assess how time-varying genetic effects may impact MR effect estimates, Labrecque et al. and
233 others suggest looking at a statistical interaction between the genetic variant and age in
234 relation to the exposure (13, 81, 82, 117-119). Following this, Labracque et al. propose plotting
235 the relationship between the genetic instrument and the exposure stratified by age in samples
236 with sufficient variation in age. They additionally show that patterns in age-varying genetic
237 relationships may be exposure specific (27). This has been shown in applied studies (10, 13, 81,
238 82, 117-119).

239

240 Morris et al. clarify the causal estimates that are estimated by MR when applied to a single
241 measure of a time-varying exposure with time-varying genetic effects (12). They consider a
242 situation where there is one genetic instrument, a time-varying continuous exposure assessed
243 on two occasions, and a single measure of an outcome. They also note the genetic instrument
244 cannot affect the exposure measured at different occasions in isolation. Instead, they argue
245 that the instrument underlies all possible exposure measurements across the lifecourse
246 through a genetic liability, so a change in genotype changes both measures of the exposure.
247 Simulations demonstrate that the Wald Ratio MR estimator recovers the correct causal effect
248 in all scenarios assessed, even where time-varying genetic associations were present. Morris
249 et al. claimed that MR estimates differ between measurements of time-varying exposures
250 because MR is estimating the total effect of the exposure trajectory on the outcome rather
251 than the effect of the exposure at a specific point in time. Further details of each of these
252 approaches can be found in Supplementary Table 1.

253

254 2. Methodological approaches to analysing repeat measures of the same exposure over
255 the lifecourse in an MR framework.

256

257 MR methods proposed to estimate the effects of repeat measures of the same exposure across
258 the lifecourse have been developed in response to the concern that a single measurement of
259 a time-varying exposure may not be adequate in capturing all time-varying information: a
260 single measure of a time-varying exposure could underestimate the relationship between the
261 exposure variable and the outcome variable, both due to the measurement error in the
262 exposure and the failure to capture long-term change (120). Importantly, in this context, later
263 stages of lifecourse exposures often depend on the earlier stages of the same exposure, whilst
264 the reverse is not true.

265

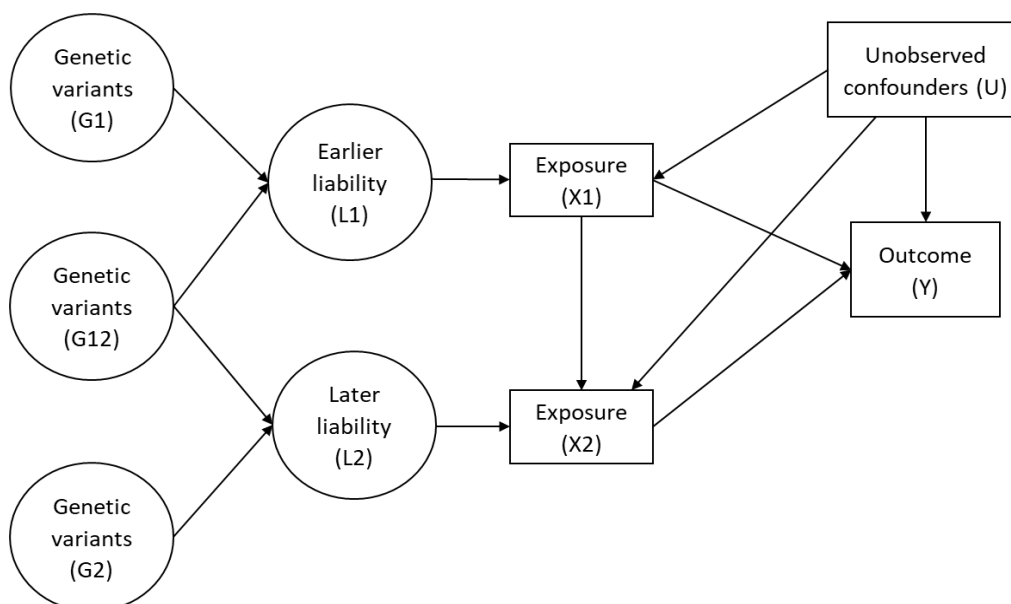
266 Cao et al. developed two methods to combine functional data analysis (to describe the
267 trajectory of the exposure) with MR, to test the causal effect of a time-varying exposure on a
268 binary outcome (22). They use functional principal component (FPC) analysis through
269 conditional expectation (PACE) to model the exposure trajectories, and then test whether a
270 summary measure of the trajectory is related to the outcome using the two-stage residual
271 inclusion (2SRI) approach. Their methods examine the evidence against the null hypothesis of
272 no causal effect, but do not estimate the causal effect. The first method (PACE + 2SRI) assumes
273 that the time-varying exposure variable has a cumulative effect on the risk of disease, and that
274 the genetic effects on the exposure do not vary over time. The cumulative value of the
275 exposure between two timepoints can be obtained by integration. The first stage obtains the
276 residuals from regressing this cumulative exposure on the instrument (and any non-time-

277 varying covariates). The second stage then relates these residuals to the outcome via a logistic
278 regression model. For the second method (PACE+2SFRI), they allow a time-varying genetic
279 effect on the exposure variable but assume that the effect of the exposure and the fitted
280 residual on the outcome are constant over time. In this case, the first stage is a functional linear
281 model for the time-varying exposure, and the second stage relates the outcome to the fitted
282 residuals and to the detrended exposure (functional residual inclusion). The authors showed
283 that this method outperformed “standard” MR analysis with a single measurement at one time
284 point, with higher statistical power in simulation studies using the functional data analysis-
285 based methods, even when the disease outcome was simulated to depend not on the
286 cumulative exposure, but on the first three functional principal component scores from PACE.

287

288 Another method employed to assess repeat measures of the same exposure over the
289 lifecourse is multivariable MR (MVMR) (13, 15). MVMR can be used to estimate the
290 independent direct effects of several highly correlated exposures on an outcome, conditional
291 on all the other exposures included in the model. It is useful in the context of mediation analysis
292 (121), to estimate the effects of several repeated measures of the same exposure, or to isolate
293 the effects of related phenotypes. Sanderson et al. explore the use of MVMR to estimate the
294 direct effect of a single exposure at different time points in an individual’s lifetime on an
295 outcome (Figure 2) (15). For multiple measurements to be included in a MVMR the genetic
296 variants must have different effects on each exposure included in the model and these effects
297 must not be a linear function of the others. The interpretation of the estimate is the effect of
298 having a liability associated with a unit higher level of exposure at one occasion while keeping
299 the liability for exposure at a separate occasion constant. Richardson et al. applied this
300 approach to evaluate whether body size in early life has an independent effect on risk of

301 disease in later life, or whether the effect seen is a result of body size in childhood being
 302 mediated by body size in adulthood (13). They use univariable MR to estimate total effects of
 303 early body size, and MVMR to estimate direct effects of early and adult body size. This
 304 approach suggests univariable analyses cannot identify critical or sensitive periods of exposure
 305 but can detect an effect of a difference in the cumulative lifetime exposure, which is a notion
 306 critiqued by Labrecque et al., highlighted earlier in this review (23, 27). If measures of the
 307 exposure at different time periods are available, and genetic instruments capable of reliably
 308 separating time-varying effects exist, it is possible to identify whether the exposure effects are
 309 stable over time or whether sensitive/critical periods exist in the lifecourse using MVMR. In
 310 theory the more timepoints we have should allow more granular inference into critical
 311 windows. However, whilst this method can narrow down or exclude periods, it cannot strictly
 312 identify important periods if the genetic effects on the periods included are correlated with
 313 genetic effects on excluded periods.



323 **Figure 2.** Latent exposure model with two periods of exposure (adapted from Sanderson et
 324 al.). G_1 is a set of genetic variants associated with earlier liability (L_1), G_2 is a set of genetic

325 variants associated with later liability (L_2), G_{12} is a set of genetic variants associated with
326 both L_1 and L_2 .

327

328 The application of G-estimation of structural nested cumulative failure models (SNCFTMs) and
329 G-estimation of structural mean models (SMM) was proposed by Shi et al. for the estimation
330 of MR models with a time-varying exposure (Figure 3) (25, 28). Again, the interpretation of
331 results from estimation for these models depends on the availability of data for the time-
332 varying exposure. SNCFTMs can be used to estimate the causal effect of a time-varying
333 treatment on a failure time outcome under the assumption that all time-varying confounders
334 have been measured and that failure is rare under all possible treatment values (122). Shi et
335 al. describe an adaptation of this use of SNCFTMs, incorporating IV-type assumptions
336 (25). Whilst confirmation of the validity of the method was achieved via simulations, analyses
337 indicated that MR with time-varying treatments and failure time outcomes using SNCFTMs
338 require large sample sizes ($n = 10,000$; $n = 25,000$ or $n = 50,000$). In addition, authors note that
339 this method should only be used with rare outcomes. In the application of g-estimation of
340 SMMs to MR analyses, Shi et al. consider three types of causal effects that can be targeted
341 when the exposure is time-varying: the effect of exposure at a single time point on the
342 outcome (point effect), the effect of exposure during a period on the outcome (period effect),
343 and the effect of exposure throughout the lifetime on the outcome (lifetime effect) (28). This
344 approach highlighted two key challenges in estimating and interpreting period effects from MR
345 analyses. The first is defining the period of interest. The second is the choice of time scale (e.g.,
346 time since conception or time since enrolment). In the context of additive causal effects for
347 continuous outcomes, the authors note that g-estimation of SMMs and two-stage least
348 squares (2SLS) MR yield similar estimates. SMMs can be naturally extended to many settings,

349 including accommodating binary and failure-time outcomes and estimating effects on the
350 multiplicative scale. SMMs are also semiparametric, and therefore avoid some of the
351 parametric assumptions of 2SLS. Further details on these methodological approaches
352 discussed along with their limitations are presented in Supplementary Table 1.

353

354

355

356

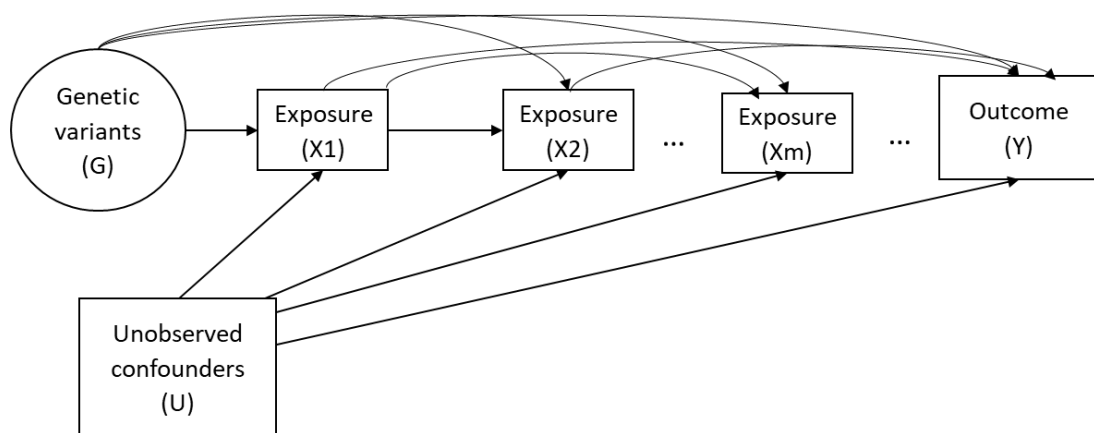
357

358

359

360

361



362 **Figure 3.** Causal diagram for instrumental variable analyses representing a scenario with a
363 time-varying exposure (adapted from Shi et al. 2022).

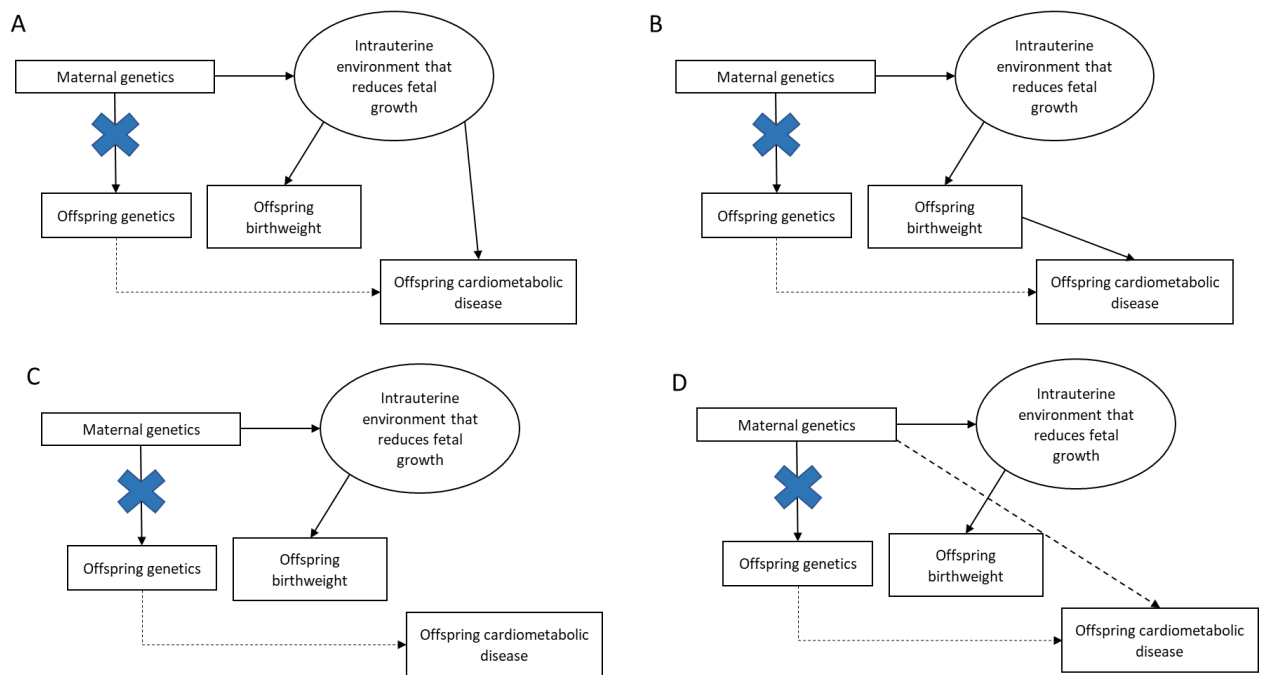
364

365 3. Novel methodological approaches to handling parental exposures in relation to
366 offspring outcomes.

367

368 Whilst “standard” MR approaches are largely sufficient for studies interested in estimating the
369 causal effect of an early life exposure on a later life outcome, novel methods have been
370 developed for intergenerational studies investigating a parental or grandparental exposure
371 whilst the outcome of interest is assessed in offspring. All of the studies we identified in this
372 section relate maternal genotypes to offspring outcomes and establish the causal effect of a

373 maternal exposure, e.g., smoking during pregnancy, on offspring health. Yang et al. used a
374 proxy gene-by-environment (G×E) MR approach to explore maternal effects on offspring
375 phenotypes where maternal genetic information was unavailable (30). They validated this
376 approach by replicating a known effect of maternal smoking heaviness on offspring birthweight
377 using the rs16969968 variant in *CHRNA5*. They then applied it to explore effects of maternal
378 smoking heaviness on offspring later life outcomes and on birthweight of participant's
379 children. Yang et al. demonstrated how G×E MR can be used to test transgenerational causal
380 effects. Further studies included in this section emphasise the need to condition on offspring
381 genotype to avoid including its effect on the outcome of interest. Earlier non-MR human
382 genetic association studies have estimated maternal genetic effects on offspring phenotypes
383 through conditional genetic association analysis of genotyped mother–offspring pairs
384 (123). This separation of genetic effects into maternal and offspring components is important
385 as maternal and offspring genotypes are correlated. Consequently, any association between
386 maternal genotype and offspring outcome may be mediated by offspring genotype (Figure 4)
387 (14, 29). Thus, as described above, naïve two-sample MR approaches in unrelated sets of
388 individuals without accounting for the correlation between maternal and foetal genotype
389 effects may result in erroneous conclusions regarding causality.



390

391 **Figure 4.** Four credible ways in which maternal single nucleotide polymorphisms (SNPs) can be
 392 related to offspring birthweight and offspring cardiometabolic risk factors. Blue crosses
 393 indicate the act of conditioning on maternal or offspring genotype, blocking the association
 394 between maternal and offspring variables. Dotted paths show paths in which the maternal
 395 genotype can be related to offspring phenotype that are not to do with intrauterine growth
 396 restriction (adapted from Moen et al.).

397

398 Two MR approaches, described by Warrington et al. and Evans et al. use structural equation
 399 modelling (SEM) to account for the correlation between maternal and foetal genotypes (14,
 400 29). Evans et al. developed a statistical model that can be used to estimate the effect of
 401 maternal genotypes on offspring outcomes, conditional on offspring genotype using both
 402 individual-level and summary data. The authors demonstrate this approach using the following
 403 example: birthweight of the mothers, birthweight of the mother's offspring, and the mother's
 404 own genotype (SNP). The genotypes of the individual's mother (their offspring's grandmother)

405 and the genotype of the individual's offspring are considered latent unobserved variables. The
406 total variance of the latent phenotype that relates to the genotype for the individual's mother
407 and offspring and for the observed SNP variable are estimated from the data. The causal path
408 between the individual's own genotype and both their mother and offspring's latent genotype
409 is set to 0.5, according to quantitative genetics theory. The estimated maternal and offspring
410 effects of the SNP path coefficients, which refer to maternal and offspring genetic effects on
411 birthweight, are also estimated. The resulting effects can be combined with SNP-exposure
412 estimates for the maternal exposures that the investigator is interested in, in a two-sample MR
413 framework.

414

415 Warrington et al. ran GWAS of own foetal genetic variants in relation to birthweight, and
416 maternal genetic variants in relation to their offspring's birthweight. They then partitioned the
417 lead SNPs, representing independent association signals, into categories based on maternal
418 and/or foetal genetic contributions to birth weight. To achieve this, they use SEM to account
419 for the correlation between foetal and maternal genotypes to provide unbiased estimates of
420 maternal and foetal genetic effects on birthweight. This method gives an indication as to which
421 genetic associations are driven by the maternal and which by the foetal genomes. To extend
422 the estimates of adjusted maternal and foetal effects genome wide, the authors developed a
423 weighted linear model (WLM) which yields a good approximation of the SEM but is less
424 computationally intensive. They used WLM-adjusted estimates in downstream analyses to
425 identify foetal and maternal specific mechanisms that regulate birthweight and to investigate
426 genetic links between birthweight and adult traits. Subsequently, the authors applied two-
427 sample MR to estimate causal effects of intrauterine exposures on offspring birthweight.
428 Authors selected SNPs associated with each exposure and regressed the WLM-adjusted

429 maternal effects on birthweight for those SNPs against the effect estimates for the maternal
430 exposure, weighting by the inverse of the variance of the maternal exposure effect estimates.
431 Similarly, the authors used WLM-adjusted foetal effects to estimate the causal effect of the
432 offspring's genetic potential on their own birthweight and compare the results with the
433 estimated maternal causal effects.

434

435 Moen et al. investigate whether a genetic risk score (GRS) of maternal SNPs associated with
436 offspring birthweight is also associated with offspring cardiometabolic risk factors, after
437 controlling for offspring GRS. They use a large dataset and explore father-offspring pairs to
438 investigate whether there is evidence for a postnatal environmental effect (genetic nurture or
439 dynastic effects) rather than an intrauterine environmental effect. In executing these analyses,
440 the authors employ a LMM which accounts for the non-independence between siblings. They
441 modelled offspring cardiometabolic risk factors as the outcome and included offspring
442 birthweight, offspring birthweight squared, offspring age, offspring sex and measurement
443 occasion as fixed effects. The non-independence between siblings and relatedness between
444 parents and offspring was modelled using a genetic relatedness matrix in the random effects
445 part of the model. This is described in detail (24). The authors performed primary analyses
446 testing the relationship between maternal genetic risk scores (GRS) and each of the offspring
447 risk factors, whilst conditioning on the offspring GRS. Further detail on applied results,
448 assumptions and limitations for these methods are provided in Supplementary Table 1.

449

450 **Section 2: Applied MR studies presenting results of a lifecourse analysis**

451

452 Of the 84 studies applying lifecourse MR methods, included in this review, 50% (42/84)
453 estimated effects in just one generation, 45% (38/84) looked across two generations and 5%
454 (4/84) estimating both. Of the one (and one and two) generational studies employed in this
455 review, 59% (27/46) estimated the effect of exposures at birth, birth to/and childhood, birth
456 to/and adolescence or birth to/and adulthood, 30% (14/46) at childhood, childhood to/and
457 adolescence or childhood to/and adulthood, and 11% (5/46) at adolescence or adulthood.
458 Within those focused on single generational effects, 50% (23/46) looked at birth weight, 46%
459 (21/46) comprised body composition measures, including adiposity traits, BMI, body size,
460 obesity, waist-to-hip ratio, and body fat percent. Single generation studies additionally
461 included estimating the genetically predicted effects of age at menarche, pubertal age (timing),
462 first sexual intercourse, sleep duration, offspring fasting glucose and type 2 diabetes, genetic
463 liability to juvenile idiopathic arthritis, disordered eating pattern, alcohol consumption and
464 DNA methylation at the HLA locus. Amongst the studies that estimated effects across two
465 generations, 21% (9/42) examined body composition as exposure measures. These included
466 maternal and paternal BMI as well as maternal adiposity, central obesity, and height. Other
467 exposures examined in a two-generational setting are included in Supplementary Table 2. All
468 of the two-generational studies estimated effects of maternal exposures, with one study also
469 examining paternal exposures (124). Outcomes addressed in the studies incorporated in this
470 review are varied and can be found in Supplementary Table 2.

471

472 **Discussion:**

473

474 In this systematic literature review, we extracted and summarised findings from studies
475 presenting and/or testing approaches to lifecourse MR as well as those presenting results of a

476 specific lifecourse analysis. Among the former, we focused on papers addressing time-varying
477 or lifecourse processes through interpretations of results from “standard” MR techniques.
478 “Standard” MR techniques have focused on estimating lifetime effects of an exposure, i.e., the
479 cumulative effect of the exposure level from conception and through the lifecourse. Labrecque
480 et al. propose that MR estimates of the same exposure assessed at different ages vary in the
481 presence of time-varying genotype-exposure associations, and this represents bias in
482 estimates of a lifetime causal effect. In response, Morris et al. proposed that “standard” MR is
483 not estimating the causal effect of an exposure as it manifests at a given timepoint, but the
484 causal effect of the underlying exposure liability. Thus, a hypothetical change in genotype
485 would affect all manifestations of the exposure. In addition, papers comprising methodological
486 approaches for intergenerational effects or pregnancy/birth exposures emphasised the
487 importance of a statistical model that can estimate the effect of maternal genotypes on
488 offspring outcomes, conditional on offspring genotype. On a related note, carrying out MR of
489 own birthweight using only genetic variants of the individual is likely to result in inaccuracies.
490 This is because foetal growth and subsequently birthweight may be influenced by both foetal
491 and correlated maternal genotypes (57).

492

493 We summarised papers employing a methodological approach for repeat measures of the
494 same exposure over the lifecourse. The methods described here enhance capability for causal
495 inference of lifecourse effects, however, there are clear limitations. One method comprised
496 the FPC analysis through PACE. Authors generated this for hypothesis testing, not for causal
497 effect size estimation, and thus this may not provide consistent estimates. Another technique
498 utilised was MVMR, which can separate influences across the lifecourse under some but not
499 all causal scenarios. Moreover, estimates used in the studies presented are based solely on

500 body size and BMI data from the UK Biobank (125, 126). These findings need to be evaluated
501 in future cohorts when sample sizes make this possible. This is particularly important as it has
502 been shown that UK Biobank participants are highly selected, which can be problematic for
503 instrumental variables analyses (125, 126). In addition, a G-estimation of SNCFTMs was
504 explored. If the rare failure assumption does not hold, however, estimates from this approach
505 may be invalid. Informative MR analyses will additionally require sample sizes much larger than
506 those presented in this paper. A G-estimation of SMM was also described. Due to wide
507 variations in age at first visit and short duration of follow-up in the data used, authors were
508 limited to using time since enrolment in the study as the time scale, which implies the added
509 assumption that the period effect is homogeneous across age. The plausibility of this
510 assumption is not only specific to the exposure–outcome relationship of interest, but also
511 depends on the variability in age.

512

513 Among the studies presenting results of specific lifecourse analyses, data availability limitations
514 were apparent. Studies focusing on one generational research are largely confined to the
515 exploration of questions regarding body composition, since these have the strongest
516 instrumental variables. In addition, these data are often more commonly available on a large
517 scale in most longitudinal cohorts. This emphasizes the need for pooling data across studies to
518 maximise power, highlighting the value of a Lifecourse MR consortium, which will enable the
519 testing of key epidemiological hypotheses that have been advanced regarding critical period
520 and cumulative effects on disease risk. For some phenotypes, however, lifecourse MR may not
521 be able to usefully contribute. This could either be due to the lack of identified genetic variants
522 allowing meaningful separation of measures at different life stages or because these simply do
523 not exist. If the effects IV-exposure effects are relatively constant, “standard” MR may

524 therefore be sufficient. Awareness of this may change over time as more data becomes
525 available. The collection of these data is likely to be useful to improve MR overall. For example,
526 stratifying analyses by age could be of value for testing other MR assumptions. An instrument
527 that has very little effect on the earlier life exposure whilst influencing a later-life exposure and
528 associating with an early-life outcome may be indicative of violations of horizontal pleiotropy,
529 correlated pleiotropy, as well as the gene-environment equivalence ('consistency')
530 assumption. In addition, lifecourse data may be used for evidence of substantial *in utero* effects
531 of variants on processes suggesting developmental trajectories. Future work is required to
532 develop guidance on how best to implement MR methods with the data that may be available,
533 within a lifecourse epidemiology framework.

534

535 Conclusions

536

537 There is a growing body of research focused on the development of lifecourse MR techniques
538 and methods which are increasingly being applied to address lifecourse research questions.
539 The possibility that genetic effects have different levels of importance in the development of
540 an exposure at different time points should be more commonly considered for application
541 when conducting MR investigations. Clear limitations persist, however, specifically regarding
542 data constraints.

543

544 **References**

545

- 546 1. Liu S, Jones RN, Glymour MM. Implications of Lifecourse Epidemiology for Research on
547 Determinants of Adult Disease. *Public Health Rev.* 2010;32(2):489-511.
- 548 2. Kuh D, Ben-Shlomo Y, Lynch J, Hallqvist J, Power C. Life course epidemiology. *Journal of*
549 *Epidemiology and Community Health.* 2003;57(10):778.
- 550 3. Lynch J, Davey Smith G. A life course approach to chronic disease epidemiology. *Annual*
551 *Review of Public Health.* 2004;26(1):1-35.
- 552 4. Davey Smith G. Assessing intrauterine influences on offspring health outcomes: can
553 epidemiological studies yield robust findings? *Basic Clin Pharmacol Toxicol.* 2008;102(2):245-
554 56.
- 555 5. Santos S, Zugna D, Pizzi C, Richiardi L. Sources of confounding in life course
556 epidemiology. *Journal of Developmental Origins of Health and Disease.* 2019;10(3):299-305.
- 557 6. Davey Smith G, Leary S, Ness A, Lawlor DA. Challenges and novel approaches in the
558 epidemiological study of early life influences on later disease. *Adv Exp Med Biol.* 2009;646:1-
559 14.
- 560 7. Lawlor D, Richmond R, Warrington N, McMahon G, Davey Smith G, Bowden J, et al.
561 Using Mendelian randomization to determine causal effects of maternal pregnancy
562 (intrauterine) exposures on offspring outcomes: Sources of bias and methods for assessing
563 them. *Wellcome Open Res.* 2017;2:11.
- 564 8. Kemp JP, Sayers A, Smith GD, Tobias JH, Evans DM. Using Mendelian randomization to
565 investigate a possible causal relationship between adiposity and increased bone mineral
566 density at different skeletal sites in children. *Int J Epidemiol.* 2016;45(5):1560-72.
- 567 9. Burgess S, Davey Smith G, Davies NM, Dudbridge F, Gill D, Glymour MM, et al.
568 Guidelines for performing Mendelian randomization investigations. *Wellcome Open Res.*
569 2019;4:186.
- 570 10. Kivimäki M, Lawlor DA, Davey Smith G, Eklund C, Hurme M, Lehtimäki T, et al. Variants
571 in the CRP gene as a measure of lifelong differences in average C-reactive protein levels: the
572 Cardiovascular Risk in Young Finns Study, 1980-2001. *Am J Epidemiol.* 2007;166(7):760-4.

- 573 11. Davey Smith G, Ebrahim S. 'Mendelian randomization': can genetic epidemiology
574 contribute to understanding environmental determinants of disease? *Int J Epidemiol.*
575 2003;32(1):1-22.
- 576 12. Morris TT, Heron J, Sanderson ECM, Davey Smith G, Didelez V, Tilling K. Interpretation
577 of Mendelian randomization using a single measure of an exposure that varies over time. *Int J*
578 *Epidemiol.* 2022.
- 579 13. Richardson TG, Sanderson E, Elsworth B, Tilling K, Davey Smith G. Use of genetic
580 variation to separate the effects of early and later life adiposity on disease risk: mendelian
581 randomisation study. *BMJ.* 2020;369:m1203.
- 582 14. Warrington NM, Beaumont RN, Horikoshi M, Day FR, Helgeland Ø, Laurin C, et al.
583 Maternal and fetal genetic effects on birth weight and their relevance to cardio-metabolic risk
584 factors. *Nature Genetics.* 2019;51(5):804-14.
- 585 15. Sanderson E, Richardson TG, Morris TT, Tilling K, Davey Smith G. Estimation of causal
586 effects of a time-varying exposure at multiple time points through multivariable mendelian
587 randomization. *PLoS Genet.* 2022;18(7):e1010290.
- 588 16. Skrivankova VW, Richmond RC, Woolf BAR, Davies NM, Swanson SA, VanderWeele TJ,
589 et al. Strengthening the reporting of observational studies in epidemiology using mendelian
590 randomisation (STROBE-MR): explanation and elaboration. *BMJ.* 2021;375:n2233.
- 591 17. Skrivankova VW, Richmond RC, Woolf BAR, Yarmolinsky J, Davies NM, Swanson SA, et
592 al. Strengthening the Reporting of Observational Studies in Epidemiology Using Mendelian
593 Randomization: The STROBE-MR Statement. *JAMA.* 2021;326(16):1614-21.
- 594 18. Moher D, Liberati A, Tetzlaff J, Altman DG. Preferred reporting items for systematic
595 reviews and meta-analyses: the PRISMA statement. *BMJ.* 2009;339:b2535.
- 596 19. Ben-Shlomo Y, Mishra G, Kuh D. Life Course Epidemiology. In: Ahrens W, Pigeot I,
597 editors. *Handbook of Epidemiology.* New York, NY: Springer New York; 2014. p. 1521-49.
- 598 20. Cheng TS, Day FR, Lakshman R, Ong KK. Association of puberty timing with type 2
599 diabetes: A systematic review and meta-analysis. *PLOS Medicine.* 2020;17(1):e1003017.
- 600 21. Spiga F, Gibson M, Dawson S, Davey Smith G, Munafò MR, Higgins JP. Tools for the
601 assessment of quality and risk of bias in Mendelian randomization studies: a systematic review.
602 *medRxiv.* 2021:2021.10.21.21265126.

- 603 22. Cao Y, Rajan SS, Wei P. Mendelian randomization analysis of a time-varying exposure
604 for binary disease outcomes using functional data analysis methods. *Genet Epidemiol.*
605 2016;40(8):744-55.
- 606 23. Labrecque JA, Swanson SA. Interpretation and Potential Biases of Mendelian
607 Randomization Estimates With Time-Varying Exposures. *Am J Epidemiol.* 2019;188(1):231-8.
- 608 24. Moen G-H, Brumpton B, Willer C, Åsvold BO, Birkeland KI, Wang G, et al. Mendelian
609 randomization study of maternal influences on birthweight and future cardiometabolic risk in
610 the HUNT cohort. *Nature Communications.* 2020;11(1):5404.
- 611 25. Shi J, Swanson SA, Kraft P, Rosner B, De Vivo I, Hernán MA. Instrumental variable
612 estimation for a time-varying treatment and a time-to-event outcome via structural nested
613 cumulative failure time models. *BMC Medical Research Methodology.* 2021;21(1):258.
- 614 26. D'Urso S, Wang G, Hwang L-D, Moen G-H, Warrington NM, Evans DM. A cautionary
615 note on using Mendelian randomization to examine the Barker hypothesis and Developmental
616 Origins of Health and Disease (DOHaD). *Journal of Developmental Origins of Health and*
617 *Disease.* 2021;12(5):688-93.
- 618 27. Labrecque JA, Swanson SA. Age-varying genetic associations and implications for bias
619 in Mendelian randomization. *medRxiv.* 2021:2021.04.28.21256235.
- 620 28. Shi J, Swanson SA, Kraft P, Rosner B, De Vivo I, Hernán MA. Mendelian Randomization
621 With Repeated Measures of a Time-varying Exposure: An Application of Structural Mean
622 Models. *Epidemiology.* 2022;33(1):84-94.
- 623 29. Evans DM, Moen G-H, Hwang L-D, Lawlor DA, Warrington NM. Elucidating the role of
624 maternal environmental exposures on offspring health and disease using two-sample
625 Mendelian randomization. *International Journal of Epidemiology.* 2019;48(3):861-75.
- 626 30. Yang Q, Millard LAC, Davey Smith G. Proxy gene-by-environment Mendelian
627 randomization study confirms a causal effect of maternal smoking on offspring birthweight,
628 but little evidence of long-term influences on offspring health. *Int J Epidemiol.*
629 2020;49(4):1207-18.
- 630 31. Allard C, Desgagné V, Patenaude J, Lacroix M, Guillemette L, Battista MC, et al.
631 Mendelian randomization supports causality between maternal hyperglycemia and epigenetic
632 regulation of leptin gene in newborns. *Epigenetics.* 2015;10(4):342-51.

- 633 32. Alwan NA, Lawlor DA, McArdle HJ, Greenwood DC, Cade JE. Exploring the relationship
634 between maternal iron status and offspring's blood pressure and adiposity: a Mendelian
635 randomization study. *Clin Epidemiol.* 2012;4:193-200.
- 636 33. Arafat S, Minică CC. Fetal Origins of Mental Disorders? An Answer Based on Mendelian
637 Randomization. *Twin Res Hum Genet.* 2018;21(6):485-94.
- 638 34. Au Yeung SL, Li AM, Schooling CM. A life course approach to elucidate the role of
639 adiposity in asthma risk: evidence from a Mendelian randomisation study. *J Epidemiol
640 Community Health.* 2021;75(3):277-81.
- 641 35. Bédard A, Lewis SJ, Burgess S, Henderson AJ, Shaheen SO. Maternal iron status during
642 pregnancy and respiratory and atopic outcomes in the offspring: a Mendelian randomisation
643 study. *BMJ Open Respir Res.* 2018;5(1):e000275.
- 644 36. Belbasis L, Bellou V, Tzoulaki I, Evangelou E. Early-Life Factors and Risk of Multiple
645 Sclerosis: An MR-EWAS. *Neuroepidemiology.* 2020;54(6):433-45.
- 646 37. Bell JA, Carslake D, Wade KH, Richmond RC, Langdon RJ, Vincent EE, et al. Influence of
647 puberty timing on adiposity and cardiometabolic traits: A Mendelian randomisation study.
648 *PLoS Med.* 2018;15(8):e1002641.
- 649 38. Bernard JY, Pan H, Aris IM, Moreno-Betancur M, Soh SE, Yap F, et al. Long-chain
650 polyunsaturated fatty acids, gestation duration, and birth size: A Mendelian randomization
651 study using fatty acid desaturase variants. *American Journal of Clinical Nutrition.*
652 2018;108(1):92-100.
- 653 39. Bond TA, Richmond RC, Karhunen V, Cuellar-Partida G, Borges MC, Zuber V, et al.
654 Exploring the causal effect of maternal pregnancy adiposity on offspring adiposity: Mendelian
655 randomisation using polygenic risk scores. *BMC Med.* 2022;20(1):34.
- 656 40. Bonilla C, Lawlor DA, Taylor AE, Gunnell DJ, Ben-Shlomo Y, Ness AR, et al. Vitamin B-12
657 status during pregnancy and child's IQ at age 8: a Mendelian randomization study in the Avon
658 longitudinal study of parents and children. *PLoS One.* 2012;7(12):e51084.
- 659 41. Bonilla C, Lawlor DA, Ben-Shlomo Y, Ness AR, Gunnell D, Ring SM, et al. Maternal and
660 offspring fasting glucose and type 2 diabetes-associated genetic variants and cognitive function
661 at age 8: a Mendelian randomization study in the Avon Longitudinal Study of Parents and
662 Children. *BMC Med Genet.* 2012;13:90.
- 663 42. Brand JS, Gaillard R, West J, McEachan RRC, Wright J, Voerman E, et al. Associations of
664 maternal quitting, reducing, and continuing smoking during pregnancy with longitudinal fetal

665 growth: Findings from Mendelian randomization and parental negative control studies. *PLoS*
666 *Med.* 2019;16(11):e1002972.

667 43. Caramaschi D, Taylor AE, Richmond RC, Havdahl KA, Golding J, Relton CL, et al. Maternal
668 smoking during pregnancy and autism: using causal inference methods in a birth cohort study.
669 *Transl Psychiatry.* 2018;8(1):262.

670 44. Caramaschi D, Sharp GC, Nohr EA, Berryman K, Lewis SJ, Davey Smith G, et al. Exploring
671 a causal role of DNA methylation in the relationship between maternal vitamin B12 during
672 pregnancy and child's IQ at age 8, cognitive performance and educational attainment: a two-
673 step Mendelian randomization study. *Hum Mol Genet.* 2017;26(15):3001-13.

674 45. Chen J, Bacelis J, Sole-Navais P, Srivastava A, Juodakis J, Rouse A, et al. Dissecting
675 maternal and fetal genetic effects underlying the associations between maternal phenotypes,
676 birth outcomes, and adult phenotypes: A mendelian-randomization and haplotype-based
677 genetic score analysis in 10,734 mother-infant pairs. *PLoS Med.* 2020;17(8):e1003305.

678 46. Chen YC, Kuo HP, Hsia SM, Wu HT, Pan WH, Lee YL. Life course body mass index through
679 childhood and young adulthood and risks of asthma and pulmonary function impairment.
680 *Pediatr Pulmonol.* 2021;56(5):849-57.

681 47. Chen W, Yao D, Yan H, Wang M, Pan Y. Genetically predicted childhood obesity and
682 adult atrial fibrillation: A mendelian randomization study. *Nutr Metab Cardiovasc Dis.* 2021.

683 48. Diemer EW, Labrecque J, Tiemeier H, Swanson SA. Application of the Instrumental
684 Inequalities to a Mendelian Randomization Study With Multiple Proposed Instruments.
685 *Epidemiology.* 2020;31(1):65-74.

686 49. Dong SS, Zhang K, Guo Y, Ding JM, Rong Y, Feng JC, et al. Phenome-wide investigation
687 of the causal associations between childhood BMI and adult trait outcomes: a two-sample
688 Mendelian randomization study. *Genome Med.* 2021;13(1):48.

689 50. Esmeijer K, de Vries AP, Mook-Kanamori DO, de Fijter JW, Rosendaal FR, Rabelink TJ, et
690 al. Low Birth Weight and Kidney Function in Middle-Aged Men and Women: The Netherlands
691 Epidemiology of Obesity Study. *Am J Kidney Dis.* 2019;74(6):751-60.

692 51. Fan HY, Huang YT, Hsieh RH, Chao JC, Tung YC, Lee YL, et al. Birthweight, time-varying
693 adiposity growth and early menarche in girls: A Mendelian randomisation and mediation
694 analysis. *Obes Res Clin Pract.* 2018;12(5):445-51.

695 52. Gan Y, Lu D, Yan C, Zhang J, Zhao J. Maternal polycystic ovary syndrome and offspring
696 birth weight: a Mendelian randomization study. *J Clin Endocrinol Metab.* 2021.

- 697 53. Geng TT, Huang T. Maternal central obesity and birth size: a Mendelian randomization
698 analysis. *Lipids Health Dis.* 2018;17(1):181.
- 699 54. Gill D, Sheehan NA, Wielscher M, Shrine N, Amaral AFS, Thompson JR, et al. Age at
700 menarche and lung function: a Mendelian randomization study. *European Journal of*
701 *Epidemiology.* 2017;32(8):701-10.
- 702 55. Hone L, Jacobs BM, Marshall C, Giovannoni G, Noyce A, Dobson R. Age-specific effects
703 of childhood Body Mass Index on multiple sclerosis risk. *medRxiv.* 2021:2021.09.12.21263445.
- 704 56. Howe LJ, Sharp GC, Hemani G, Zuccolo L, Richmond S, Lewis SJ. Prenatal alcohol
705 exposure and facial morphology in a UK cohort. *Drug Alcohol Depend.* 2019;197:42-7.
- 706 57. Huang T, Wang T, Zheng Y, Ellervik C, Li X, Gao M, et al. Association of Birth Weight With
707 Type 2 Diabetes and Glycemic Traits: A Mendelian Randomization Study. *JAMA Netw Open.*
708 2019;2(9):e1910915.
- 709 58. Hughes AM, Morris T, Ayorech Z, Tesli M, Ask H, Reichborn-Kjennerud T, et al. The
710 causal effects of body mass index (BMI) on childhood symptoms of depression, anxiety
711 disorder, and attention-deficit hyperactivity disorder: a within family Mendelian randomization
712 study. *medRxiv.* 2021:2021.09.17.21263612.
- 713 59. Humphriss R, Hall A, May M, Zuccolo L, Macleod J. Prenatal alcohol exposure and
714 childhood balance ability: findings from a UK birth cohort study. *BMJ Open.* 2013;3(6).
- 715 60. Hwang LD, Lawlor DA, Freathy RM, Evans DM, Warrington NM. Using a two-sample
716 Mendelian randomization design to investigate a possible causal effect of maternal lipid
717 concentrations on offspring birth weight. *Int J Epidemiol.* 2019;48(5):1457-67.
- 718 61. Jarvis D, Mitchell JS, Law PJ, Palin K, Tuupanen S, Gylfe A, et al. Mendelian
719 randomisation analysis strongly implicates adiposity with risk of developing colorectal cancer.
720 *Br J Cancer.* 2016;115(2):266-72.
- 721 62. Kar SP, Andrulis IL, Brenner H, Burgess S, Chang-Claude J, Considine D, et al. The
722 association between weight at birth and breast cancer risk revisited using Mendelian
723 randomisation. *Eur J Epidemiol.* 2019;34(6):591-600.
- 724 63. Karhunen V, Bond TA, Zuber V, Hurtig T, Moilanen I, Järvelin MR, et al. The link between
725 attention deficit hyperactivity disorder (ADHD) symptoms and obesity-related traits: genetic
726 and prenatal explanations. *Transl Psychiatry.* 2021;11(1):455.

- 727 64. Kirkbride JB, Susser E, Kundakovic M, Kresovich JK, Davey Smith G, Relton CL. Prenatal
728 nutrition, epigenetics and schizophrenia risk: can we test causal effects? *Epigenomics*.
729 2012;4(3):303-15.
- 730 65. Kjaergaard AD, Wu Y, Ming WK, Wang Z, Kjaergaard MN, Ellervik C. Homocysteine and
731 female fertility, pregnancy loss and offspring birthweight: a two-sample Mendelian
732 randomization study. *Eur J Clin Nutr*. 2022;76(1):40-7.
- 733 66. Kupers LK, Monnereau C, Sharp GC, Yousefi P, Salas LA, Ghantous A, et al. Meta-analysis
734 of epigenome-wide association studies in neonates reveals widespread differential DNA
735 methylation associated with birthweight. *Nature Communications*. 2019;10(1) (no pagination).
- 736 67. Lawn RB, Sallis HM, Wootton RE, Taylor AE, Demange P, Fraser A, et al. The effects of
737 age at menarche and first sexual intercourse on reproductive and behavioural outcomes: A
738 Mendelian randomization study. *PLoS One*. 2020;15(6):e0234488.
- 739 68. Lee HA, Park EA, Cho SJ, Kim HS, Kim YJ, Lee H, et al. Mendelian randomization analysis
740 of the effect of maternal homocysteine during pregnancy, as represented by maternal MTHFR
741 C677T genotype, on birth weight. *J Epidemiol*. 2013;23(5):371-5.
- 742 69. Lewis SJ, Bonilla C, Brion MJ, Lawlor DA, Gunnell D, Ben-Shlomo Y, et al. Maternal iron
743 levels early in pregnancy are not associated with offspring IQ score at age 8, findings from a
744 Mendelian randomization study. *Eur J Clin Nutr*. 2014;68(4):496-502.
- 745 70. Li D, Zou Y. Causal effects of life course adiposity on chronic kidney disease: a
746 Mendelian randomization study. *Ann Palliat Med*. 2021;10(10):10861-9.
- 747 71. Li X, Tian Y, Yang YX, Ma YH, Shen XN, Chen SD, et al. Life Course Adiposity and
748 Alzheimer's Disease: A Mendelian Randomization Study. *J Alzheimers Dis*. 2021;82(2):503-12.
- 749 72. Lin SL, Leung GM, Schooling CM. The Effect of Birth Weight on Academic Performance:
750 Instrumental Variable Analysis. *Am J Epidemiol*. 2017;185(9):853-9.
- 751 73. Ly A, Leppert B, Rai D, Jones H, Dardani C, Stergiakouli E. Genetic liability to rheumatoid
752 arthritis on autism and autistic traits: polygenic risk score and Mendelian randomization
753 analyses. *Transl Psychiatry*. 2022;12(1):18.
- 754 74. Moen GH, Beaumont RN, Grarup N, Sommer C, Shields BM, Lawlor DA, et al.
755 Investigating the causal effect of maternal vitamin B12 and folate levels on offspring
756 birthweight. *Int J Epidemiol*. 2021;50(1):179-89.

- 757 75. Morales E, Vilahur N, Salas LA, Motta V, Fernandez MF, Murcia M, et al. Genome-wide
758 DNA methylation study in human placenta identifies novel loci associated with maternal
759 smoking during pregnancy. *Int J Epidemiol*. 2016;45(5):1644-55.
- 760 76. Orri M, Pingault JB, Turecki G, Nuyt AM, Tremblay RE, Côté SM, et al. Contribution of
761 birth weight to mental health, cognitive and socioeconomic outcomes: two-sample Mendelian
762 randomisation. *Br J Psychiatry*. 2021;219(3):507-14.
- 763 77. Pehkonen J, Viinikainen J, Kari JT, Böckerman P, Lehtimäki T, Raitakari O. Birth weight
764 and adult income: An examination of mediation through adult height and body mass. *Health
765 Econ*. 2021;30(10):2383-98.
- 766 78. Pehkonen J, Viinikainen J, Kari JT, Böckerman P, Lehtimäki T, Viikari J, et al. Birth weight,
767 adult weight, and cardiovascular biomarkers: Evidence from the Cardiovascular Young Finns
768 Study. *Prev Med*. 2022;154:106894.
- 769 79. Pereira RD, Rietveld CA, van Kippersluis H. The Interplay between Maternal Smoking
770 and Genes in Offspring Birth Weight. *medRxiv : the preprint server for health sciences*.
771 2020:2020.10.30.20222844.
- 772 80. Plotnikov D, Williams C, Guggenheim JA. Association between birth weight and
773 refractive error in adulthood: a Mendelian randomisation study. *Br J Ophthalmol*.
774 2020;104(2):214-9.
- 775 81. Power GM, Tobias JH, Frayling TM, Tyrrell J, Hartley A, Heron J, et al. Age-specific effects
776 of weight-based body size on fracture risk in later life: a lifecourse Mendelian randomisation
777 study. *Eur J Epidemiol*. 2023.
- 778 82. Power GM, Tyrrell J, Frayling TM, Davey Smith G, Richardson TG. Mendelian
779 Randomization Analyses Suggest Childhood Body Size Indirectly Influences End Points From
780 Across the Cardiovascular Disease Spectrum Through Adult Body Size. *J Am Heart Assoc*.
781 2021;10(17):e021503.
- 782 83. Probst-Hensch N, Jeong A, Stolz D, Pons M, Socal PM, Bettschart R, et al. Causal Effects
783 of Body Mass Index on Airflow Obstruction and Forced Mid-Expiratory Flow: A Mendelian
784 Randomization Study Taking Interactions and Age-Specific Instruments Into Consideration
785 Toward a Life Course Perspective. *Front Public Health*. 2021;9:584955.
- 786 84. Reed ZE, Micali N, Bulik CM, Davey Smith G, Wade KH. Assessing the causal role of
787 adiposity on disordered eating in childhood, adolescence, and adulthood: a Mendelian
788 randomization analysis. *Am J Clin Nutr*. 2017;106(3):764-72.

789 85. Richardson TG, Crouch DJM, Power GM, Berstein FM, Hazelwood E, Fang S, et al.
790 Disentangling the direct and indirect effects of childhood adiposity on type 1 diabetes and
791 immune-associated diseases: a multivariable Mendelian randomization study. medRxiv.
792 2021:2021.04.19.21255222.

793 86. Richardson TG, Mykkanen J, Pahkala K, Ala-Korpela M, Bell JA, Taylor K, et al. Evaluating
794 the direct effects of childhood adiposity on adult systemic metabolism: A multivariable
795 Mendelian randomization analysis. *International Journal of Epidemiology*. 2021;50(5):1580-92.

796 87. Richmond RC, Sharp GC, Ward ME, Fraser A, Lyttleton O, McArdle WL, et al. DNA
797 methylation and BMI: Investigating identified methylation sites at HIF3A in a causal framework.
798 *Diabetes*. 2016;65(5):1231-44.

799 88. Richmond RC, Timpson NJ, Felix JF, Palmer T, Gaillard R, McMahon G, et al. Using
800 Genetic Variation to Explore the Causal Effect of Maternal Pregnancy Adiposity on Future
801 Offspring Adiposity: A Mendelian Randomisation Study. *PLoS Med*. 2017;14(1):e1002221.

802 89. Ritchie SJ, Bates TC, Corley J, McNeill G, Davies G, Liewald DC, et al. Alcohol
803 consumption and lifetime change in cognitive ability: a gene × environment interaction study.
804 *Age (Dordr)*. 2014;36(3):9638.

805 90. Shaheen SO, Rutterford C, Zuccolo L, Ring SM, Davey Smith G, Holloway JW, et al.
806 Prenatal alcohol exposure and childhood atopic disease: a Mendelian randomization approach.
807 *J Allergy Clin Immunol*. 2014;133(1):225-32.e1-5.

808 91. Taylor AE, Howe LD, Heron JE, Ware JJ, Hickman M, Munafò MR. Maternal smoking
809 during pregnancy and offspring smoking initiation: assessing the role of intrauterine exposure.
810 *Addiction*. 2014;109(6):1013-21.

811 92. Taylor K, McBride N, Zhao J, Oddie S, Azad R, Wright J, et al. The relationship of maternal
812 gestational mass spectrometry-derived metabolites with offspring congenital heart disease:
813 results from multivariable and Mendelian randomization analyses. medRxiv.
814 2022:2022.02.04.22270425.

815 93. Thompson WD, Beaumont RN, Kuang A, Warrington NM, Ji Y, Tyrrell J, et al. Higher
816 maternal adiposity reduces offspring birthweight if associated with a metabolically favourable
817 profile. *Diabetologia*. 2021;64(12):2790-802.

818 94. Thompson WD, Tyrrell J, Borges MC, Beaumont RN, Knight BA, Wood AR, et al.
819 Association of maternal circulating 25(OH)D and calcium with birth weight: A mendelian
820 randomisation analysis. *PLoS Med*. 2019;16(6):e1002828.

- 821 95. Tyrrell J, Richmond RC, Palmer TM, Feenstra B, Rangarajan J, Metrustry S, et al. Genetic
822 Evidence for Causal Relationships Between Maternal Obesity-Related Traits and Birth Weight.
823 *Jama*. 2016;315(11):1129-40.
- 824 96. Wang G, Bhatta L, Moen GH, Hwang LD, Kemp JP, Bond TA, et al. Investigating a
825 Potential Causal Relationship Between Maternal Blood Pressure During Pregnancy and Future
826 Offspring Cardiometabolic Health. *Hypertension*. 2022;79(1):170-7.
- 827 97. Wang J, Kwok MK, Au Yeung SL, Zhao J, Li AM, Lam HS, et al. Age of puberty and Sleep
828 duration: Observational and Mendelian randomization study. *Sci Rep*. 2020;10(1):3202.
- 829 98. Wang J, Li AM, Lam H, Leung GM, Schooling CM. Sleep Duration and Adiposity in
830 Children and Adults: Observational and Mendelian Randomization Studies. *Obesity (Silver
831 Spring)*. 2019;27(6):1013-22.
- 832 99. Wang T, Huang T, Li Y, Zheng Y, Manson JE, Hu FB, et al. Low birthweight and risk of
833 type 2 diabetes: a Mendelian randomisation study. *Diabetologia*. 2016;59(9):1920-7.
- 834 100. Wang T, Tang Z, Yu X, Gao Y, Guan F, Li C, et al. Birth Weight and Stroke in Adult Life:
835 Genetic Correlation and Causal Inference With Genome-Wide Association Data Sets. *Front
836 Neurosci*. 2020;14:479.
- 837 101. Wei Y, Zhan Y, Löfvenborg JE, Tuomi T, Carlsson S. Birth weight, BMI in adulthood and
838 latent autoimmune diabetes in adults: A Mendelian randomization study. *medRxiv*.
839 2021:2021.10.25.21265464.
- 840 102. Wiklund P, Karhunen V, Richmond RC, Parmar P, Rodriguez A, De Silva M, et al. DNA
841 methylation links prenatal smoking exposure to later life health outcomes in offspring. *Clin
842 Epigenetics*. 2019;11(1):97.
- 843 103. Yajnik CS, Chandak GR, Joglekar C, Katre P, Bhat DS, Singh SN, et al. Maternal
844 homocysteine in pregnancy and offspring birthweight: epidemiological associations and
845 Mendelian randomization analysis. *Int J Epidemiol*. 2014;43(5):1487-97.
- 846 104. Yan YS, Qu Z, Lv PP, Huang HF. Pediatric and adult obesity concerns in female health: a
847 Mendelian randomization study. *Endocrine*. 2022;75(2):400-8.
- 848 105. Ye J, Richardson TG, McArdle WL, Relton CL, Gillespie KM, Suderman M, et al.
849 Identification of loci where DNA methylation potentially mediates genetic risk of type 1
850 diabetes. *J Autoimmun*. 2018;93:66-75.

851 106. Yu XH, Wei YY, Zeng P, Lei SF. Birth weight is positively associated with adult
852 osteoporosis risk: observational and Mendelian randomization studies. *J Bone Miner Res.*
853 2021;36(8):1469-80.

854 107. Zanetti D, Tikkanen E, Gustafsson S, Priest JR, Burgess S, Ingelsson E. Birthweight, Type
855 2 Diabetes Mellitus, and Cardiovascular Disease: Addressing the Barker Hypothesis With
856 Mendelian Randomization. *Circ Genom Precis Med.* 2018;11(6):e002054.

857 108. Zeng P, Yu X, Zhou X. Birth weight is not causally associated with adult asthma: results
858 from instrumental variable analyses. *Sci Rep.* 2019;9(1):7647.

859 109. Zeng P, Zhou X. Causal Association Between Birth Weight and Adult Diseases: Evidence
860 From a Mendelian Randomization Analysis. *Front Genet.* 2019;10:618.

861 110. Zhang G, Bacelis J, Lengyel C, Teramo K, Hallman M, Helgeland Ø, et al. Assessing the
862 Causal Relationship of Maternal Height on Birth Size and Gestational Age at Birth: A Mendelian
863 Randomization Analysis. *PLoS Med.* 2015;12(8):e1001865.

864 111. Zhang L, Tang L, Huang T, Fan D. Life Course Adiposity and Amyotrophic Lateral
865 Sclerosis: A Mendelian Randomization Study. *Ann Neurol.* 2020;87(3):434-41.

866 112. Zhang X, Wu P, Chen Y, Zhang W, Xia K, Hu H, et al. Does Maternal Normal Range
867 Thyroid Function Play a Role in Offspring Birth Weight? Evidence From a Mendelian
868 Randomization Analysis. *Front Endocrinol (Lausanne).* 2020;11:601956.

869 113. Zheng Y, Huang T, Wang T, Mei Z, Sun Z, Zhang T, et al. Mendelian randomization
870 analysis does not support causal associations of birth weight with hypertension risk and blood
871 pressure in adulthood. *Eur J Epidemiol.* 2020;35(7):685-97.

872 114. Zuccolo L, Lewis SJ, Davey Smith G, Sayal K, Draper ES, Fraser R, et al. Prenatal alcohol
873 exposure and offspring cognition and school performance. A 'Mendelian randomization'
874 natural experiment. *Int J Epidemiol.* 2013;42(5):1358-70.

875 115. Tilling K, Sterne JA, Szklo M. Estimating the effect of cardiovascular risk factors on all-
876 cause mortality and incidence of coronary heart disease using G-estimation: the
877 atherosclerosis risk in communities study. *Am J Epidemiol.* 2002;155(8):710-8.

878 116. Naimi AI, Cole SR, Hudgens MG, Richardson DB. Estimating the effect of cumulative
879 occupational asbestos exposure on time to lung cancer mortality: using structural nested
880 failure-time models to account for healthy-worker survivor bias. *Epidemiology.*
881 2014;25(2):246-54.

882 117. Jiang X, Holmes C, McVean G. The impact of age on genetic risk for common diseases.
883 PLOS Genetics. 2021;17(8):e1009723.

884 118. Richardson TG, Crouch DJM, Power GM, Morales-Berstein F, Hazelwood E, Fang S, et
885 al. Childhood body size directly increases type 1 diabetes risk based on a lifecourse Mendelian
886 randomization approach. Nat Commun. 2022;13(1):2337.

887 119. Richardson TG, Power GM, Davey Smith G. Adiposity may confound the association
888 between vitamin D and disease risk - a lifecourse Mendelian randomization study. Elife.
889 2022;11.

890 120. Davis CE, Rifkind BM, Brenner H, Gordon DJ. A single cholesterol measurement
891 underestimates the risk of coronary heart disease. An empirical example from the Lipid
892 Research Clinics Mortality Follow-up Study. Jama. 1990;264(23):3044-6.

893 121. Carter AR, Sanderson E, Hammerton G, Richmond RC, Davey Smith G, Heron J, et al.
894 Mendelian randomisation for mediation analysis: current methods and challenges for
895 implementation. Eur J Epidemiol. 2021;36(5):465-78.

896 122. Picciotto S, Hernán MA, Page JH, Young JG, Robins JM. Structural Nested Cumulative
897 Failure Time Models to Estimate the Effects of Interventions. J Am Stat Assoc. 2012;107(499).

898 123. Warrington NM, Freathy RM, Neale MC, Evans DM. Using structural equation modelling
899 to jointly estimate maternal and fetal effects on birthweight in the UK Biobank. Int J Epidemiol.
900 2018;47(4):1229-41.

901 124. Hughes AM, Morris T, Ayorech Z, Tesli M, Ask H, Reichborn-Kjennerud T, et al. The
902 causal effects of body mass index (BMI) on childhood symptoms of depression, anxiety
903 disorder, and attention-deficit hyperactivity disorder: a within family Mendelian randomization
904 study. medRxiv. 2021:2021.09.17.21263612.

905 125. Fry A, Littlejohns TJ, Sudlow C, Doherty N, Adamska L, Sprosen T, et al. Comparison of
906 Sociodemographic and Health-Related Characteristics of UK Biobank Participants With Those
907 of the General Population. Am J Epidemiol. 2017;186(9):1026-34.

908 126. Hughes RA, Davies NM, Davey Smith G, Tilling K. Selection Bias When Estimating
909 Average Treatment Effects Using One-sample Instrumental Variable Analysis. Epidemiology.
910 2019;30(3):350-7.

911
912

913 **Statements & Declarations**

914

915 **Funding**

916 This work was in part supported by the Integrative Epidemiology Unit which receives funding
917 from the UK Medical Research Council and the University of Bristol (MC_UU_00011/1 and
918 MC_UU_00011/6). GDS conducts research at the NIHR Biomedical Research Centre at the
919 University Hospitals Bristol NHS Foundation Trust and the University of Bristol. The views
920 expressed in this publication are those of the author(s) and not necessarily those of the NHS,
921 the National Institute for Health Research or the Department of Health. GMP is supported by
922 the GW4 Biomed Doctoral Training Programme, awarded to the Universities of Bath, Bristol,
923 Cardiff and Exeter from the Medical Research Council (MRC)/UKRI (MR/N0137941/1). TMF has
924 received funding from the Medical Research Council (MR/T002239/1) EU-IMI SOPHIA and GSK.
925 JT is supported by an Academy of Medical Sciences (AMS) Springboard award, which is
926 supported by the AMS, the Wellcome Trust, GCRF, the Government Department of Business,
927 Energy and Industrial strategy, the British Heart Foundation and Diabetes UK (SBF004\1079).
928 The funders had no role in study design, data collection and analysis, decision to publish, or
929 preparation of the manuscript.

930

931 **Competing Interests**

932

933 I have read the journal's policy and the authors of this manuscript have the following
934 competing interests: T.G.R is an employee of GlaxoSmithKline outside of this work. All other
935 authors declare no competing interests.

936

937

938 **Ethics approval**

939

940 This study is a systematic review of available literature and did not involve direct access to
941 participants of the primary research studies included. Research ethics approval was therefore
942 not required.

943

944 **Consent to participate**

945

946 Not applicable.

947

948 **Authors' contributions**

949

950 G.M.P: Conceptualisation, Methodology, Software, Formal analysis, Investigation, Data
951 curation, Writing – original draft, Writing – review and editing, Visualisation. E.S: Writing –
952 review and editing. P.P: Validation, Writing - review and editing. A.F: Writing – review and
953 editing. T.T.M: Writing – review and editing. C.P: Validation. T.M.F: Writing – review and
954 editing. J.H: Writing – review and editing. T.G.R: Writing – review and editing. R.R:
955 Conceptualisation. J.T: Writing – review and editing. G.D.S: Conceptualisation, Writing – review
956 and editing, Supervision, Funding acquisition. L.D.H: Conceptualisation, Writing – review and
957 editing, Supervision. K.T: Conceptualisation, Writing – review and editing, Supervision.

958