

Inferring Skin-Brain-Skin Connections from Infodemiology Data using Dynamic Bayesian Networks

Marco Scutari^{1*}, Delphine Kerob^{2,3}, Samir Salah²

¹ Istituto Dalle Molle di Studi sull'Intelligenza Artificiale (IDSIA), Lugano, Switzerland.

² La Roche-Posay Dermatological Laboratories, Levallois-Perret, France.

³ Department of Dermatology, AP-HP Saint-Louis Hospital, Paris, France

* Contact author.

Contact information:

Istituto Dalle Molle di Studi sull'Intelligenza Artificiale (IDSIA)
Polo Universitario Lugano
Via la Santa 1
6962 Lugano (Switzerland)
email: scutari@bnlearn.com

Research Article

submitted to

NPJ Digital Medicine

Abstract

The relationship between skin diseases and mental illnesses has been extensively studied using cross-sectional epidemiological data. Typically such data can only measure association (rather than causation) and include only a subset of the diseases we may be interested in. In this paper, we complement the evidence from such analyses by learning a dynamic Bayesian network over 12 health conditions from a Google search trends public data set. The resulting network model can represent both cyclic and acyclic causal relationships, is easy to interpret and accounts for the spatio-temporal trends in the data in a probabilistically rigorous way.

The average R^2 for a condition given the values of all conditions in the previous week is 0.67: in particular, 0.42 for acne, 0.85 for asthma, 0.58 for ADHD, 0.87 for burn, 0.76 for erectile dysfunction, 0.88 for scars, 0.57 for alcohol disorders, 0.57 for anxiety, 0.53 for depression, 0.74 for dermatitis, 0.60 for sleep disorders and 0.66 for obesity. Results confirm the large number of cyclic relationships between the selected health conditions and the interplay between skin and mental diseases. For acne, we observed a cyclic relationship with anxiety and attention deficit hyperactivity disorder (ADHD) and an indirect relationship with depression through sleep disorders. For dermatitis, we observed directed links to anxiety, depression and sleep disorder and a cyclic relationship with ADHD. We also observe a link between dermatitis and ADHD and a cyclic relationship between acne and ADHD. Furthermore, the network includes several direct connections between sleep disorders and other health conditions, highlighting the impact of the former on the overall health and well-being of the patient.

Mapping disease interplay, indirect relationships and the key role of mediators, such as sleep disorder, will allow healthcare professionals to address disease management

holistically and more effectively. Even if all skin and mental diseases are considered jointly, each disease subnetwork is unique, allowing for more targeted interventions.

Introduction

Skin diseases and mental illnesses have been extensively studied. However, they are commonly investigated in isolation: the interplay between different skin diseases, between different mental illnesses, and between skin diseases and mental illnesses is ignored, limiting our understanding of their aetiology. Skin and brain may interact in four different ways: skin-to-skin, brain-to-brain, skin-to-brain and brain-to-skin. Skin-to-skin interactions, or skin diseases associations, may arise because of the general altered skin barrier function shared by all inflammatory skin diseases [1]; because of the use of topical drugs that induce an alteration of the skin barrier function or other skin reactions [2,3]; and because of common aggravating mental and environmental risk factors [4,5].

As for brain-to-brain interactions, there is a growing consensus among psychiatrists that the boundaries between mental disorders, which often have overlap in signs and symptoms, are not clear: a recent study shows that mental diseases share a large number of genetic variants [6]. Anxiety and depression, for example, have a genetic correlation of 0.79 and ADHD has a correlation of 0.39 with anxiety and of 0.52 with depression. More developments are needed to take into account these overlapping genetic contributions to reduce diagnostic and treatment heterogeneity of psychiatric disorders.

Skin-to-brain interactions have largely been investigated through the evaluation of the impact of skin diseases on mental health, mainly anxiety, depression and attention deficit hyperactivity disorder [7,8,9,10,11,12,13]. This relationship has also been studied indirectly through the impact of skin diseases on symptoms directly related to mental illnesses such as depressive symptoms, social isolation and loneliness [14,15,16]. A second important

pathway is through mediators like quality of sleep in connection with pruritus [17,18,19,20]. Over-representation of sleep disorders has been observed on patients with psoriasis, atopic dermatitis, hidradenitis suppurativa and vitiligo [21,22,23,24]. New works are studying the reverse effect of sleep deprivation on skin disease through the bi-directional relationship between sleep and the immune system [25]. This link is hypothesised to be contributing to the chronic inflammation observed in many skin diseases. Therefore, dermatologists should emphasise sleep hygiene in their practice.

Dermatologists studying brain-to-skin interactions have been arguing that stress, anxiety and depression can aggravate or precipitate the onset of most inflammatory skin diseases. The COVID 19 pandemic provided important evidence supporting this hypothesis, with dermatologists reporting an increase in the incidence of flares during this period [26]. Unfortunately, this effect is difficult to quantify because patient access to medical treatment was restricted during lockdown periods, when stress, anxiety and depression were most likely to develop. The hypothalamic pituitary adrenal (HPA) axis is the system responsible for providing a response to psychological stress, which in turn produces both pro- and anti-inflammatory effects on the skin [4]. Initially, the release of pro-inflammatory cytokines by the corticotropin-releasing hormone (CRH) starts a quick inflammatory process. However, CRH also triggers a slower anti-inflammatory process that leads to the release of glucocorticoids (cortisone, cortisol). Studies have shown that pro-inflammatory cytokines induce mast cell activation, which in turn promotes immune dysregulation and neurogenic inflammation [27,28]. They are known to play a role in allergic reactions as well [29]. Inflammatory skin diseases share a common link with the quality of the skin barrier function: the enzyme 11 β -hydroxysteroid dehydrogenase type I, which is responsible for the transformation of cortisone (inactive form) into cortisol (active form), is a marker of

barrier function impairment [30]. Anti-psychological stress interventions like SSRI reduce both enzyme concentration and improved barrier function.

Psychological stress is not only an aggravating factor for skin diseases but may also trigger diseases like vitiligo [31], psoriasis [32], seborrheic dermatitis [33], trichotillomania, excoriation disorder and delusions of parasitosis [34] in individuals with genetic susceptibility.

Complementing this epidemiological evidence with a model of the interplay between these four classes of interactions is crucial to improve the diagnosis and treatment of skin diseases and mental illnesses in medical practices. Modelling this interplay using epidemiological data is very difficult because of the lack of comorbidity studies with a longitudinal design. In this paper we consider the search trends infodemiologic data available in the Google COVID-19 Public Data, an analysis-ready large longitudinal data set [35]. It is not the first time that this data set is used to complement epidemiological insights for achieving a larger sample size or for disease early detection [36]. The intuition behind its use is that a significant proportion of patients perform online searches about their putative conditions before visiting a physician [36,37]. We can then assume a non-negligible association between the frequency of online searches for specific diseases and the actual incidence of those diseases in physicians' diagnoses. Restricting ourselves to searches performed on Google is not a significant limitation because of the prevalence of its use: 8.5 billion queries are processed by Google every single day [38]. At the time of this writing, a search of PubMed titles and abstracts with the keywords 'search trend' and 'Google search' yields 1489 results with a 59% increase in 2020 compared to 2019. This volume is maintained in 2021 and 2022. It is clear that the COVID 19 pandemic has highlighted how such such data can be useful for tracking pandemics and more interestingly studying longitudinal patterns of disease progression in several healthcare

domains [39,40]. However, poor documentation practices and high heterogeneity in methods has led to conflicting findings [41]. Previous infodemiologic studies based on Google search trends relied on keyword matching, which is likely to miss many classes of queries, and many of them did not incorporate query translation, which may result in significant loss of information in countries like the US where multiple languages are in common use [42]. To overcome these two issues, Google leveraged the latest advancements in natural language processing (NLP) for queries classification and translation, including state-of-the-art transformers builded using massive corpus with deep neural networks [43], to create the COVID 19 Public Data set. Training on massive corpus makes them more accurate in classifying diseases even with little to no fine-tuning (respectively, zero-shot classification without additional supervised learning [44] and with few-shot classification with a very small number of examples [45]).

In this paper we will use the Google COVID 19 Public Data set, to model the interplay between skin diseases and mental illnesses using dynamic Bayesian networks (dynamic BNs) [46]. This class of graphical models has a unique set of advantages: they provide a graphical representation of the interactions between diseases; they can be learned automatically from data, from expert knowledge, or a combination of both; and they can be used as diagnostic or prognostic support systems because they can easily evaluate any scenario of interest. Most importantly, and unlike more common correlation networks, dynamic BNs represent interactions as directed arcs and can therefore disambiguate causes and effects [47,48]. This ability is crucial in finding appropriate targets for treatment, thus avoiding symptomatic treatment and improving clinical outcomes, and in differentiating unidirectional cause-effect relationships from feedback loops. As a result, dynamic BNs provide a clearer picture of the interplay between the skin and the brain and, at the same time, they are better suited to design treatment regimes.

Results

The data set used in this work is publicly available at the URL listed in the Data Availability. We considered the web search queries collected weekly from users in the United States between 2020-03-02 and 2022-01-24 (100 weeks). We focus on the following 12 conditions (with abbreviations): obesity ("OBE"), acne ("ACNE"), alcoholism ("ALC"), anxiety ("ANX"), asthma ("ASTH"), attention deficit hyperactivity disorder ("ADHD"), burn ("BURN"), depression ("DEP"), dermatitis ("DER"), erectile dysfunction ("ED"), sleep disorder ("SLD") and scar ("SCAR"). The mapping between these conditions and the variables in the search trends is reported in Supplementary Table 1. To avoid a very sparse data set, we remove symptoms with more than 30% missing data. The focus is on skin diseases, excluding symptoms that are very general like 'Lesions', 'Skin_condition', 'Infection', 'Inflammation' and "Skin_ulcer" or with potential confusion like 'Xeroderma'. The second set of symptoms are mental conditions with a focus on anxiety, depression and ADHD, the most studied mental disease in dermatology. Asthma is retained for its documented link with atopic dermatitis and anxiety [49,50]. Obesity is a comorbidity that plays an important role in mental disorders like anxiety [51], therefore its presence is justified to play a role in confounding control in some relationships. Obesity may also be a trigger for some skin diseases like atopic dermatitis and psoriasis [52,53]. Erectile dysfunction is selected because it is considered a probable consequence of mental disorders and sleep deprivation [54,55]. Considering additional health conditions might allow the network to recover more information but is likely to produce dense networks that are difficult to interpret and to make computations cumbersome. For each of these conditions, we retrieved from the Google COVID-19 Public Data set the relative frequency in web search queries of the relevant search terms in each county of each US state over the period. Therefore, the resulting data set we used for the analysis takes the

form of a weekly multivariate time series over 12 health conditions for each county and state; with the relative frequencies of the web search queries normalised at the county level. Missing data were imputed, and the accuracy of the imputation process was empirically confirmed to be satisfactory. (See the Methods for details). The overall number of observations for each condition given by 2879 counties over 50 states and 100 weeks is 287900.

The dynamic BN model we learned from these data to investigate the skin-brain-skin connections among the conditions above is shown in Figure 1. The model should be read as follows: each node corresponds to one of the conditions above, and arcs represent direct probabilistic associations. Nodes that are not connected by an arc are indirectly associated if we can find a path that connects them without passing through any node corresponding to conditions we may be controlling for, or conditionally independent otherwise.

[Figure 1 about here.]

The interactions between these conditions, which include both uni-directional effects and feedback loops, were learned in an unsupervised manner both to validate known relationships from the literature and to discover new putative ones. In order to reduce false positives (which in this context implies including spurious arcs in the dynamic BN), we structured the dynamic BN to account for the temporal and spatial dependence structure of the data and we integrated model averaging via bootstrap resampling in the learning process. Furthermore, we tuned the learning process by penalising the inclusion of arcs in the dynamic BN to find the optimal balance between predictive accuracy and the need to obtain a sparse network. The large sample size of the Google COVID-19 Public Data Set

gives us enough statistical power to detect even small, marginal effects. However, an overly dense network model would hardly be interpretable from either a qualitative or quantitative point of view: it would be difficult to examine visually and it would fail to formally identify which pairs of conditions are independent or conditionally independent. Therefore, the final dynamic BN shown in Figure 1 has been chosen to contain on average about 3 arcs for each condition. Even so, the average predictive accuracy across all conditions is 99.96% of that of the dynamic Bayesian network learned in the same way but with no penalization. In absolute terms, the R^2 for each condition given the values of all conditions in the previous week are 0.42 for ACNE, 0.85 for ASTH, 0.58 for ADHD, 0.87 for BURN, 0.76 for ED 0.88 for SCAR, 0.57 for ALC, 0.57 for ANX, 0.53 for DEP, 0.74 for DER, 0.60 for SLD and 0.66 for OBE (average 0.67). The strength of the arcs, which represent our confidence that arcs are statistically significant, are reported in Supplementary Table 2: as expected, most are identical or close to 1 (where 0 represents a complete lack of confidence and 1 represents the strongest possible level of confidence). Note that the model allows us to give a causal interpretation to the arcs within the frameworks of Granger's and Pearl's causality. (See the Methods for more details.)

[Figure 2 around here.]

We show in Figure 2 how the variability in ACNE, ANX, DER, DEP, SLD and ADHD is explained by the respective parents: these traits are of particular interest to us. In particular, we note that ASTH explains a nontrivial proportion (0.235) of the variability of ACNE in the following week, less than OBE (0.264) but more than ANX (0.216). However, the association between the ASTH and ACNE is not well established in the literature. We attribute this finding to the fact that ANX is connected to all of ASTH, ACNE and OBE,

which may allow for confounding in models that do not consider all of them simultaneously. For instance, such confounding may arise because of the feedback loop between ACNE and OBE (which are both connected to ANX) if OBE is not controlled. Our model supports the hypothesis that ASTH and ACNE are only weakly linked (in the same week) after controlling for ANX (in the previous week): if we perform inference on the dynamic BN as described in the Methods, the proportion of the overall variance of ACNE explained by ASTH is only 0.0041. Stratifying by ANX (low: bottom quartile of search query frequencies; high: top quartile; average: second and third quartiles) reveals that the proportion of explained variance is even smaller when ANX is average or low (0.0046, 0.0036, respectively) compared to when ANX is high (0.0053). Furthermore, the model supports the hypothesis that the feedback loop between ACNE and OBE is driven by ANX. From the model, we can see that ACNE explains OBE (proportion of variance: 0.622) and OBE explains ACNE (proportion of variance: 0.264). However, if we perform inference on our model we find that, after controlling and stratifying for ANX, OBE only explains proportions 0.016 (high ANX), 0.017 (low ANX) and 0.013 (average ANX) of the overall variability of ACNE in the same week. The same is true for ACNE, which explains similar proportions of the variance of OBE.

These results confirm the cyclic relationships between skin and mental health conditions. Figure 2 highlights the importance of each trigger for the 6 health conditions. Depression is mainly driven by mental disorders and sleep disorders, but dermatitis explains a significant proportion of the disease search popularity. Anxiety triggers are more diverse: skin conditions like acne and dermatitis play an important role. Triggers of ADHD, learned in an unsupervised way by the DBN, give a new insight on the disease. It is already known that ADHD is associated with a risk increase of burn injuries and scarring (from burns): these

data suggest that increase in burn injuries may lead to ADHD diagnosis.

For acne, we observed a direct and important cyclic relationship with anxiety and ADHD and an indirect relationship with depression through sleep disorders. For dermatitis, we observed directed links to anxiety, depression and sleep disorder and a cyclic relationship with ADHD. We also observed a link between dermatitis and ADHD, and a cyclic relationship between acne and ADHD. The role of mediators like sleep disorders is confirmed in the network with an important impact on anxiety and depression. Acne, burns, scars and dermatitis have all a direct impact on sleep disorders. The learned BN makes it possible to visualise more disease relationships in a single picture.

Discussion

Even though the modelled causations are infodemiologic and not clinical, the results confirm the interplay between skin diseases and mental illnesses. Several skin-to-skin, brain-to-brain, skin-to-brain and brain-to-skin relationships are highlighted in the model. It is interesting to see well-known clinical relationships reproduced in the dynamic BN and put into a larger context with deeper explanations.

The large number of feedback loops supports the existence of vicious circles in which diseases exacerbate each other until treated appropriately. The results are unable to elucidate the starting point of these circles but emphasise the need for a more holistic disease management for both dermatologists and psychiatrists. Dermatologists should take into account the mental health of their patients just as psychiatrists should take into account the skin problems of their own patients.

The results also point out the important role of key mediators, like sleep disorders, that

establish a bridge between the skin and the brain. We should not ignore these disorders if we want to act effectively on skin and mental health. Furthermore, not controlling for important comorbidities like obesity may lead to spurious conclusions, hiding the true relationships.

Even if all skin and mental diseases are considered jointly, each disease subnetwork is unique, allowing for more targeted interventions. The conditional independence property of Bayesian networks allows for this kind of focus without a loss of information.

In this work we also wanted to raise awareness of the importance of measuring causality with appropriate study designs and statistical methods leveraging multiple conditions in a longitudinal monitoring and allowing feedback loops to reproduce the natural cycle of human health. This may significantly reduce the number of measured associations and highlight a focused set of preferential targets for intervention.

The second important objective of this study was to provide guidelines for a better use of search trends data to insure robust findings. Firstly, queries classification using keywords approach may fail to capture relevant information and lead to low reproducibility across researchers. Using the latest AI breakthroughs in natural language processing for both query translation and classification will ensure a better reproducibility of studies.

Secondly, choosing models that can capture the key properties of search trends data is necessary to avoid several sources of bias. We provided a detailed methodology to deal with missing data, space and time dependencies, the lack of sparsity in the network due to the big size of the data set, model interpretability and other considerations.

The large discrepancies between the conclusions of studies dealing with this type of data

are mostly due to how queries were classified and how they are processed. Standardising these two tasks will demonstrate the high potential of these data to complement clinical evidence for a more positive impact on public health.

Media coverage, the major bias of internet data, should also be taken into account and may be mitigated with big data sets.

Methods

All analyses were performed using R [56] and the packages *nlme* [57], *lme4* [58], *imputeTS* [59] and *bnlearn* [60].

Missing data management

The Google COVID-19 Public Data Set originally contained missing data, either single data points or whole time series for specific counties and periods of time. The proportion of missing data in individual conditions ranged from 0% to 16%. We explored different methods to impute them for both individual time series (exponentially-weighted moving average, interpolation) and multivariate time series (Kalman filters) using the *imputeTS* R package. To assess their performance, we used the complete observations and artificially introduced 2%, 5%, 10% and 20% missing values both individually and in batches of four to simulate both random missingness and lack of measurements over one month. All combinations of missing data patterns, proportions and algorithms produced average relative imputation errors between 10% and 14%, suggesting that all imputation methods perform similarly (Supplementary Figures 1 and 2). Finally, we chose exponentially-weighted moving average to impute the data before learning the Bayesian network model

because of its simplicity. It was impossible to apply imputation to certain combinations of conditions and counties because an insufficient number of observed values were available; we dropped them from the data thus reducing the overall sample size to 287866.

Spatio-Temporal dependence structure of the data

The Google COVID-19 Public Data Set was collected over time and over different US states and counties and therefore presents marked spatio-temporal patterns of dependence between observations. We will summarise them here because they are a key consideration in our modelling choices.

To be consistent with the assumptions of the dynamic Bayesian network model we will describe below, we quantify the magnitude of spatial and temporal dependencies with the proportion of the variance of the conditions that they explain as random effects in a mixed-effect model [58]. For spatial dependencies, we further distinguish between the variance explained by the state and that explained by the county. For time, we assume an autocorrelation of order 1 (that is, each condition is correlated with itself at the previous time point). The proportions for each condition, as well as the average over all conditions, are shown in Supplementary Figure 3. On average, states explain 12% of the variance of the conditions (min: 7%, max: 16%), counties explain 49% of the variance (min: 23%, max: 84%) and counties together with autocorrelation explain 64% of the variance (min: 35%, max: 86%).

Dynamic Bayesian networks

Bayesian networks (BNs) [46] are a graphical modelling technique that can leverage either data alone, or data combined with an expert prior knowledge to learn multivariate pathway models. The graphical part of the BN is a directed acyclic graph (DAG) in which each node

corresponds to a variable of interest (here one of the conditions) and in which arcs (or the lack thereof) elucidates the conditional dependence (independence) relationships between the variables. The implication is that each variable depends in probability on the variables that are its parents in the DAG: as a result, the joint multivariate distribution of the data factorises into a set of univariate distributions associated with the individual variables. This property allows automatic and computationally-efficient inference and learning of BNs from data and has made them popular to analyse clinical data [61, 62, 63]. In particular, inference makes it possible to use BNs to automatically validate arbitrary hypotheses involving the variables it is modelling: in the simplest instance, a BNs is used as a generative model and hypotheses are validated by stochastic simulation.

To account for the spatio-temporal nature of the data, we use a particular form of BN called a *dynamic BN* in which each variable appears in the DAG as a separate node in each time point. The key advantage of dynamic BNs is that, unlike classical BNs, they can represent feedback loops by allowing each variable in a pair to depend on the other across time points: for instance, $X_{1,t_0} \rightarrow X_{2,t_1}$ and $X_{2,t_0} \rightarrow X_{1,t_1}$ implies a feedback loop between X_1 and X_2 across two consecutive time points t_0 and t_1 . Arcs are only allowed to point forward in time from a variable measured at t_0 and one measured at t_1 to ensure that they are semantically meaningful and to be able to relate the dynamic BN to the Granger causality [47] and Pearl Causality frameworks [48]. We disallow "instantaneous arcs" between variables measured in the same time point for similar reasons. With these restrictions, we can construct a cyclic directed graph that can represent feedback loops from the DAG by folding the nodes that correspond to the same variable at different time points into a single node. As a result, pairs of arcs like $X_{1,t_0} \rightarrow X_{2,t_1}$ and $X_{2,t_0} \rightarrow X_{1,t_1}$ are transformed into cycles of the form $X_1 \leftrightarrow X_2$; and arcs like $X_{1,t_0} \rightarrow X_{1,t_1}$ become loops that express autocorrelation.

As for the distributions of the variables, we assume that 1) the search query frequencies in

any given week can depend in probability on those in the previous week, but not on older frequencies; and that 2) the data are stationary, so we only need to model the dependence between two generic consecutive times t_0 and t_1 . These assumptions allow us to parameterize the dynamic BN similarly to a vector auto-regressive time series [64]: each condition X_i in each county is therefore modelled using a linear regression model of the form

$$X_{i,t_1} = \mu_{i,t_1} + pa(X_{i,t_1})\beta_{i,t_1} + \varepsilon_{i,t_1}$$

at time t_1 and

$$X_{i,t_0} = \mu_{i,t_0} + \varepsilon_{i,t_0}$$

$pa(\cdot)$ denotes the parents of the variable, μ is the intercept, the β are the associated regression coefficients, and the ε are normally distributed residuals with mean zero and some variance specific to each node. The contribution of each parent to the linear regression can thus be naturally measured by the associated explained variance in the model (ANOVA). Conditions have different scales arising from the different popularities of the corresponding search queries: to make them easier to compare in the Results, we normalise the variance explained by each parent into a proportion (that is, we divide it by total explained variance of all parents). In doing so, we omit the contribution of the condition itself: in the auto-regressive model we are considering, auto-correlations are strong enough to make the contributions of other conditions appear less significant for purely numerical reasons.

In addition to accounting for the time dimension, the dynamic BN incorporates the spatial dimension of the data as well. Assume that each condition has a different baseline value in each county that does not change over time. Then the local distribution of each condition at time t_1 is regressed against itself at time t_0 (same county, previous time point). The different baseline for the state then appears in both sides of the equation and can be accounted for in the regression model.

We learned the dynamic BN from the data by choosing the optimal DAG as that maximising the penalised log-likelihood

$$PL(D, w) = \log L(D) - w \log(n) p,$$

where p is the number of parameters of the dynamic BN and n is the number of observations in the data, using the hill-climbing greedy search algorithm [65]. We then estimate the parameters of the dynamic BN (the intercepts μ and the regression coefficients β) with the chosen DAG using maximum likelihood. In order to ensure that the DAG is as sparse as possible without sacrificing predictive accuracy, we chose the penalty coefficient w by learning the dynamic BN with $w = 1, 2, 4, 8, 16, 32, 64, 128$ on the first 52 weeks of data and then computing the average proportion of variance explained over all conditions in the remaining weeks of data acting as a validation set. For reference, $w = 1$ gives the Bayesian Information criterion (BIC) [66]. Larger values of w penalise the inclusion of arcs in the DAG by increasingly large amounts, effectively decreasing the value of the penalised likelihood if the associated regression coefficients are small.

The resulting proportion of explained variance are plotted against w in Figure 3. We observe no marked decrease in predictive accuracy until $w = 4$, which we choose as the best trade-off with the sparsity of the DAG. For reference, the dynamic BN learned with $w = 1$ has 123 arcs while that learned with $w = 4$ has 87 arcs with a predictive accuracy that is 99.96% of the former model. We also note that the proportion of explained variance in the validation set is not markedly different from that explained by the dynamic BNs in the training set they were learned from, which suggests that there is no overfitting.

[Figure 3 about here.]

The large number of observations available on each condition gives the dynamic BN enough statistical power to detect even small effects from the data and thus to include them as arcs in the model, resulting in an overly dense DAG. The fact that increasing w and dropping many of those arcs has a limited impact on predictive accuracy suggests that the relationships they express may be of limited clinical relevance for diagnostic or prognostic purposes.

Furthermore, we made use of model averaging to reduce the potential of including spurious arcs in the BN. We implemented using bootstrap aggregation: we extracted 500 bootstrap samples from the data, learned the DAG of a dynamic BN from each of them, and then constructed a consensus DAG containing only those arcs that appear with frequency higher than the data-driven threshold described in [67]. Each frequency is a measure of the strength of the corresponding arc, that is, of our confidence that the arc is supported by the data: a value of 0 represents a complete lack of confidence, whereas a value of 1 represents perfect confidence. To further prevent patterns in the data from impacting the consensus model, we increased the variability of the bootstrap samples by randomising the order of the variables and by reducing their size to 75% of that of the original data.

Finally, we assessed the impact of the spatio-temporal structure of the data on structure learning to better motivate the use of dynamic BNs. For this purpose, we performed both structure and parameter learning as described above to fit a classical (that is, static) BN in which variables are not replicated across time points. As a means of comparison, we learned a second static BN from the data after removing their spatio-temporal structure with the mixed-effect model we used above to quantify the proportion of variance explained by the counties and the temporal autocorrelation. If we learn just the parameters

of the BN, we find that 63% of the regression coefficients are inflated by a factor of at least 2 when we use the original data compared to the those in which the spatio-temporal structure has been removed; and the sign is different 29% of the coefficients. If we learn the structure as well from both sets of data, we find that 71% of the arcs differ between the two. The reason is that a classical, static BN is a misspecified model, and the dependence relationships between the variables are confounded with space-time dependencies between the data points. This supports our choice to use a dynamic BN instead.

Code availability

The code used for the analysis is publicly available at the URL:

<https://www.bnlearn.com/research/loreal21>

Data availability

The Google COVID-19 Public Data Set is publicly available at the URL:

<https://console.cloud.google.com/marketplace/product/bigquery-public-datasets/covid19-public-data-program>

References

- [1] Lee, S. H., Jeong, S. K. & Ah, S. K. An Update of the Defensive Barrier Function of Skin. *Yonsei Medical Journal* **47**(3), 293-306 (2006).
- [2] Zhou, L., Chen, L., Liu, X., Huang, Y., Xu, Y., Xiong, X. & Deng, Y. The Influence of Benzoyl Peroxide on Skin Microbiota and the Epidermal Barrier for Acne Vulgaris. *Dermatologic Therapy* **35**(3), e15288 (2022).
- [3] Rocha, M. A. & Bagatin, E. Skin Barrier and Microbiome in Acne. *Archives of Dermatological Research* **310**, 181-185 (2018).
- [4] Evans, A. The Skin and the Stress Connection. *Dermatology World*, **December** (2020).
- [5] Roberts, W. Air Pollution and Skin Disorders. *International Journal of Women's Dermatology* **7**(1), 91-97 (2021).
- [6] Marshall, M. The Hidden Links Between Mental Disorders. *Nature* **581**, 19-21 (2020).
- [7] Uhlenhake, E., Yentzer, B. A. & Feldman, S. R. Acne Vulgaris and Depression: a Retrospective Examination. *Journal of Cosmetic Dermatology* **9**(1), 59-63 (2010).
- [8] Purvis, D., Robinson, E., Merry, S. & Watson P. Acne, Anxiety, Depression and Suicide

- in Teenagers: A Cross-Sectional Survey of New Zealand Secondary School Students. *Journal of Pediatrics and Child Health* **42**(12), 793-796 (2006).
- [9] Samuels, D. V., Rosenthal, R., Lin, R., Chaudhari, S. & Natsuaki, M. N. Acne Vulgaris and Risk of Depression and Anxiety: A Meta-Analytic Review. *Journal of the American Academy of Dermatology* **83**(2), 532-541 (2020).
- [10] Møller Rønstad, A. T., Halling-Overgaard, A.-S., Hamann, C. R., Skov, L., Egeberg, A. & Thyssen, J. P. Association of Atopic Dermatitis with Depression, Anxiety, and Suicidal Ideation in Children and Adults: A Systematic Review and Meta-Analysis. *Journal of the American Academy of Dermatology* **79**(3), 448-456 (2018).
- [11] Patel, K. R., Immaneni, S., Singam, V., Rastogi, S. & Silverberg, J. I. Association Between Atopic Dermatitis, Depression and Suicidal Ideation: A Systematic Review and Meta-Analysis. *Journal of the American Academy of Dermatology* **80**(2), 402-410 (2019).
- [12] Yaghmaie, P., Koudelka, C. W. & Simpson, E. L. Mental Health Comorbidity in Patients with Atopic Dermatitis. *Journal of Allergy and Clinical Immunology* **131**(2), 428-433 (2013).
- [13] Chen, M.-H., Su, T.-P., Chen, Y.-S., Hsu, J.-W., Huang, K.-L., Chang, W.-H., Chen, T.-J., Pan, T.-L. & Bai, Y.-M. Is Atopy in Early Childhood a Risk Factor for ADHD and ASD? A Longitudinal Study. *Journal of Psychosomatic Research* **77**(4), 316-321 (2014).
- [14] Barankin, B. & DeKoven, J. Psychosocial Effect of Common Skin Diseases. *Canadian Family Physician* **48**, 712-716 (2002).
- [15] Hong, J., Koo, B. & Koo, J. The Psychosocial and Occupational Impact of Chronic Skin Disease. *Dermatologic Therapy* **21**, 54-59 (2008).
- [16] Yew, Y. W., Kuan, A. H. Y., Ge, L., Yap, C. W. & Heng, B. H. Psychosocial Impact of Skin Diseases: A Population-Based Study. *PLoS ONE* **15**(12), e0244765 (2020).
- [17] Lavery, M. J., Stull, C., Kinney, M. O. & Yosipovich, G. Nocturnal Pruritus: The Battle for a Peaceful Night's Sleep. *International Journal of Molecular Sciences* **17**(3), 425 (2016).
- [18] Hawro, T., Hawro, M., Zalewska-Janowska, A., Weller, K., Metz, M. & Maurer, M. Pruritus and Sleep Disturbances in Patients with Psoriasis. *Archives of Dermatological Research* **312**(2), 103-111 (2020).
- [19] Chamlin, S. L., Mattson, C. L., Frieden, I. J., Williams, M. L., Mancini, A. J., Cella, D. & Chren, M. The Price of Pruritus: Sleep Disturbance and Cosleeping in Atopic Dermatitis. *Archives of Pediatrics and Adolescent Medicine* **159**(8), 745-750 (2005).
- [20] Dahl, R. E., Bernhisel-Broadbent, J., Scanlon-Holdford, S., Sampson, H. A. & Lupo, M. Sleep Disturbances in Children with Atopic Dermatitis. *Archives of Pediatrics and Adolescent Medicine* **149**(8), 856-860 (1995).
- [21] Mouzas, O., Angelopoulos, N., Papaliagka, M. & Tsogas, P. Increased Frequency of Self-Reported Parasomnias in Patients Suffering from Vitiligo. *European Journal of Dermatology* **18**(2), 165-168 (2008).
- [22] Kaaz, K., Szepietowski, J. C. & Matusiak, Ł. Influence of Itch and Pain on Sleep Quality in Patients with Hidradenitis Suppurativa. *Acta Dermato-Venereologica* **98**(8), 757-61 (2018).
- [23] Gupta, M.A., Simpson, F.C. & Gupta, A. K. Psoriasis and Sleep Disorders: A Systematic Review. *Sleep Medicine Reviews* **29**, 63-75 (2016).

- [24] Chang, Y. S. & Chiang, B. L. Sleep Disorders and Atopic Dermatitis: A 2-Way Street? *Journal of Allergy and Clinical Immunology* **142**(4), 1033-40 (2018).
- [25] Myers, B., Reddy, V., Chan, S., Thibodeaux, Q., Brownstone, N. & Bhutani, T. Sleep, Immunological Memory, and Inflammatory Skin Disease. *Dermatology* **237**, 1035-1038 (2021).
- [26] Shah, M., Sachdeva, M., Alavi, A., Shi, V. Y. & Hsiao, J. L. Optimizing Care for Atopic Dermatitis Patients During the COVID-19 Pandemic. *Journal of American Academy of Dermatology* **83**(2), E165-E167 (2020).
- [27] Snast, I., Reiter, O., Atzmony, L., Leshem, Y. A., Hodak, E., Mimouni, D. & Pavlovsky, L. Psychological Stress and Psoriasis: a Systematic Review and Meta-Analysis. *The British Journal of Dermatology* **178**(5), 1044-1055 (2018).
- [28] Arck, P. C., Slominski, A., Theoharides, T. C., Peters, E. M. J. & Paus, R. Neuroimmunology of Stress: Skin Takes Center Stage. *The Journal of Investigative Dermatology* **126**(8), 1697-704 (2006).
- [29] Galli, S. J. & Tsai, M. Mast Cells in Allergy and Infection: Versatile Effector and Regulatory Cells in Innate and Acquired Immunity. *European Journal of Immunology* **40**(7), 1843-1851 (2010).
- [30] Choe, S. J., Kim, D., Kim, E. J., Ahn, J., Choi, E., Son, E. D., Lee, T. R. & Choi, E. H. Psychological Stress Deteriorates Skin Barrier Function by Activating 11 β -Hydroxysteroid Dehydrogenase 1 and the HPA Axis. *Scientific Reports* **8**, 6334 (2018).
- [31] Papadopoulos, L., Bor, R., Legg C. & Hawk, J. L. Impact of Life Events on the Onset of Vitiligo in Adults: Preliminary Evidence for a Psychological Dimension in Aetiology. *Clinical and Experimental Dermatology* **23**(6), 243-248 (1998).
- [32] Schmid-Ott, G., Jaeger, B., Boehm, T., Langer, K., Stephan, M., Raap, U. & Werfel, T. Immunological Effects of Stress in Psoriasis. *The British Journal of Dermatology* **160**(4), 782-785 (2009).
- [33] Misery, L., Touboul, S., Vinçot, C., Dutray, S., Rolland-Jacob, G., Consoli, S. G., Farcet, Y., Feton-Danou, N., Cardinaud, F., Callot, V., De La Chapelle, C., Pomey-Rey, D., Consoli, S. M. Stress and Seborrheic Dermatitis. *Annales de Dermatologie et de Venereologie* **134**(11), 833-837.
- [34] Rahman, S. M., Abduelmula, A. & Jafferany, M. Psychopathological Symptoms in Dermatology: A Basic Approach Towards Psychocutaneous Disorders. *International Journal of Dermatology*, Early view (2022).
- [35] COVID-19 Open-Data. <https://github.com/GoogleCloudPlatform/covid-19-open-data>
- [36] Ginsberg, J., Mohebbi, M. H., Patel, R. S., Brammer, L., Smolinski, M. S. & Brilliant, L. Detecting Influenza Epidemics Using Search Engine Query Data. *Nature* **457**, 1012–1014 (2009).
- [37] Van Riel, N., Auwerx, K., Debbaut, P., Van Hees, S. & Schoenmakers, B. The Effect of Dr Google on Doctor–Patient Encounters in Primary Care: a Quantitative, Observational, Cross-Sectional Study. *BJGP Open* **1**(2), bjgpopen17X100833.
- [38] <https://www.oberlo.com/statistics/most-visited-websites>
- [39] Lamos, V., Majumder, M. S., Yom-Tov, E., Edelstein, M., Moura, S., Hamada, Y., Rangaka, M. X., McKendry, R. A. & Cox, I. J. Tracking COVID-19 Using Online Search. *NPJ Digital Medicine* **4**, 17 (2021).

- [40] Lu, T. & Reis, B. Y. Internet Search Patterns Reveal Clinical Course of COVID-19 Disease Progression and Pandemic Spread Across 32 Countries. *NPJ Digital Medicine* **4**, 22 (2021).
- [41] Nuti, S. V., Wayda, B., Ranasinghe, I., Wang, S., Dreyer, R. P., Chen, S. I. & Murugiah, K. The Use of Google Trends in Health Care Research: A Systematic Review. *PLoS ONE* **9**(10), e109583 (2014).
- [42] Cervellini, G., Comelli, I. & Lippi, G. Is Google Trends a Reliable Tool for Digital Epidemiology? Insights from different Clinical Settings. *Journal of Epidemiology and Global Health* **7**(3), 185-189 (2017).
- [43] Vaswani, A., Shazeer, N., Parmar, N., Uszkoreit, J., Jones, L., Gomez, A. N., Kaiser, Ł. & Polosukhin, I. Attention Is All You Need. *Advances in Neural Information Processing Systems* **30**, 6000-6010 (2017).
- [44] Yin, W., Hay, J. & Roth, D. Benchmarking Zero-shot Text Classification: Datasets, Evaluation and Entailment Approach. In *Proceedings of the 2019 Conference on Empirical Methods in Natural Language Processing and the 9th International Joint Conference on Natural Language Processing*, pages 3912-3921. Association for Computational Linguistics (2019).
- [45] Ye, H., Hu, H., Zhan, D. & Sha, F. Few-Shot Learning via Embedding Adaptation with Set-to-Set Functions. In *Proceedings of the IEEE/CVF Conference on Computer Vision and Pattern Recognition*, 8088-8817 (2020).
- [46] Scutari, M. & Denis, J.-B. *Bayesian Networks with Examples in R*. Chapman & Hall/CRC, Boca Raton, 2nd edition (2021).
- [47] Bressler, S. L. & Seth, A. K. Wiener–Granger Causality: A well established methodology. *NeuroImage* **58**(2), 323-329 (2011).
- [48] Pearl, J. *Causality*. Cambridge University Press, 2nd edition (2009).
- [49] Yaneva, M. & Darlenski, R. The Link Between Atopic Dermatitis and Asthma-Immunological Imbalance and Beyond. *Asthma Research and Practice* **7**, 6 (2021).
- [50] Katon, W., Richardson L., Lozano, P. & McCauley, E. The Relationship Between Asthma and Anxiety Disorders. *Psychosomatic Medicine* **66**(3), 349-355 (2004).
- [51] Garipey, G., Nikta, D. & Schmitz, N. The Association Between Obesity and Anxiety Disorders in the Population: A Systematic Review and Meta-Analysis. *International Journal of Obesity* **34**, 407-149 (2010).
- [52] Ali, Z., Ulrik, C. S., Agner, T. & Thomsen, S. F. Is Atopic Dermatitis Associated with Obesity? A Systematic Review of Observational Studies. *Journal of the European Academy of Dermatology & Venereology* **32**(8), 1246-1255 (2018).
- [53] Jensen, P. & Skov, L. Psoriasis and Obesity. *Dermatology* **232**(6), 633-639 (2016).
- [54] Velurajah, R., Brunckhorst, O., Waqar, M., McMullen, I. & Ahmed, K. Erectile Dysfunction in Patients with Anxiety Disorders: A Systematic Review. *International Journal of impotence research* **34**, 177-186 (2022).
- [55] Cho, J. W. & Duffy, J. F. Sleep, Sleep Disorders, and Sexual Dysfunction. *The World Journal of Men's Health* **37**(3), 261-275 (2019).
- [56] R Core Team. *R: A language and environment for statistical computing*. R Foundation for Statistical Computing, Vienna, Austria (2022). Version 4.1.2.
- [57] Pinheiro, J. C. & Bates, D. M. *Mixed-Effects Models in S and S-PLUS*. Springer, New

York (2000). Package version 3.1-153.

[58] Bates, D. M., Maechler, M., Bolker, B. & Walker, S. Fitting Linear Mixed-Effects Models Using lme4. *Journal of Statistical Software* **67**(1), 1-48 (2015). Package version 1.1-27.1.

[59] Moritz., S. & Bartz-Beielstein, T. imputeTS: Time Series Missing Value Imputation in R. *The R Journal* **9**(1), 207-218 (2017). Package version 3.2.

[60] Scutari, M. Learning Bayesian Networks with the bnlearn R Package. *Journal of Statistical Software* **35**(3), 1-22 (2010). Package version 4.8-20211104.

[61] Liew, B. X. W. *et al.* Probing the Mechanisms Underpinning Recovery in Post-Surgical Patients with Cervical Radiculopathy Using Bayesian Networks. *European Journal of Pain* **24**(5), 909-920 (2021).

[62] Scher, J.U. *et al.* Decreased Bacterial Diversity Characterizes the Altered Gut Microbiota in Patients With Psoriatic Arthritis, Resembling Dysbiosis in Inflammatory Bowel Disease. *Arthritis & Rheumatology* **67**(1), 128-139 (2015).

[63] McNally, R. J., Mair, P., Mugno, B. L. & Riemann, B. C. Co-Morbid Obsessive-Compulsive Disorder and Depression: A Bayesian Network Approach. *Psychological Medicine* **47**(7), 1204-1214.

[64] Lütkepohl, H. *New Introduction To Multiple Time Series Analysis*. Springer-Verlag, Berlin (2005).

[65] Russel, S. J. & Norvig, P. *Artificial Intelligence: A Modern Approach*. Prentice Hall, Upper Saddle River, New Jersey, 3rd edition (2009).

[66] Schwarz, G. Estimating the Dimension of a Model. *The Annals of Statistics* **6**(2), 461-464 (1978).

[67] Scutari, M. & Nagarajan, R. On Identifying Significant Edges in Graphical Models of Molecular Networks. *Artificial Intelligence in Medicine* **57**(3), 207–217 (2013).

Acknowledgements

We would like to thank Dr. Katrina Abuabara for the useful comments and suggestions on an early draft of this paper.

Competing Interests

The Authors declare no Competing Financial or Non-Financial Interests.

Author Contributions

Marco Scutari carried out the statistical analysis, constructed the dynamic BN model, and contributed to the writing of the paper. Samir Salah and Delphine Kerob performed the literature review, provided the clinical interpretation of the model, and contributed to the writing of the paper. In addition, Samir Salah performed the initial data selection and

cleaning.

Supplementary information

Supplementary Table 1: Mapping between the variables in the Google COVID-19 Public Data Set and the conditions discussed in this paper. When multiple variables map to the same condition, the search query frequencies from those variables were aggregated to give a single overall frequency for the condition.

Supplementary Table 2: Arc strengths for the dynamic Bayesian network model shown in Figure 1. "From" denotes the node at the tail of the arc, "To" denotes the node at the head of the arc and "Arc strength" is the frequency of the arcs in the bootstrapped models.

Supplementary Figure 1: Average relative error (in absolute value) for the missing data imputation algorithms with individual missing values amounting to 2%, 5%, 10% and 20% of the total.

Supplementary Figure 2: Average relative error (in absolute value) for the missing data imputation algorithms with values missing in 1-month batches (4 consecutive weeks) amounting to 2%, 5%, 10% and 20% of the total.

Supplementary Figure 3: Proportion of the variance of each condition explained by the US states, by the counties and by the counties together with the temporal autocorrelation. The average over all conditions for each of them is reported at the bottom.

Figure 1: The dynamic Bayesian network linking skin and brain conditions learned from the Google COVID-19 Public Data Set.

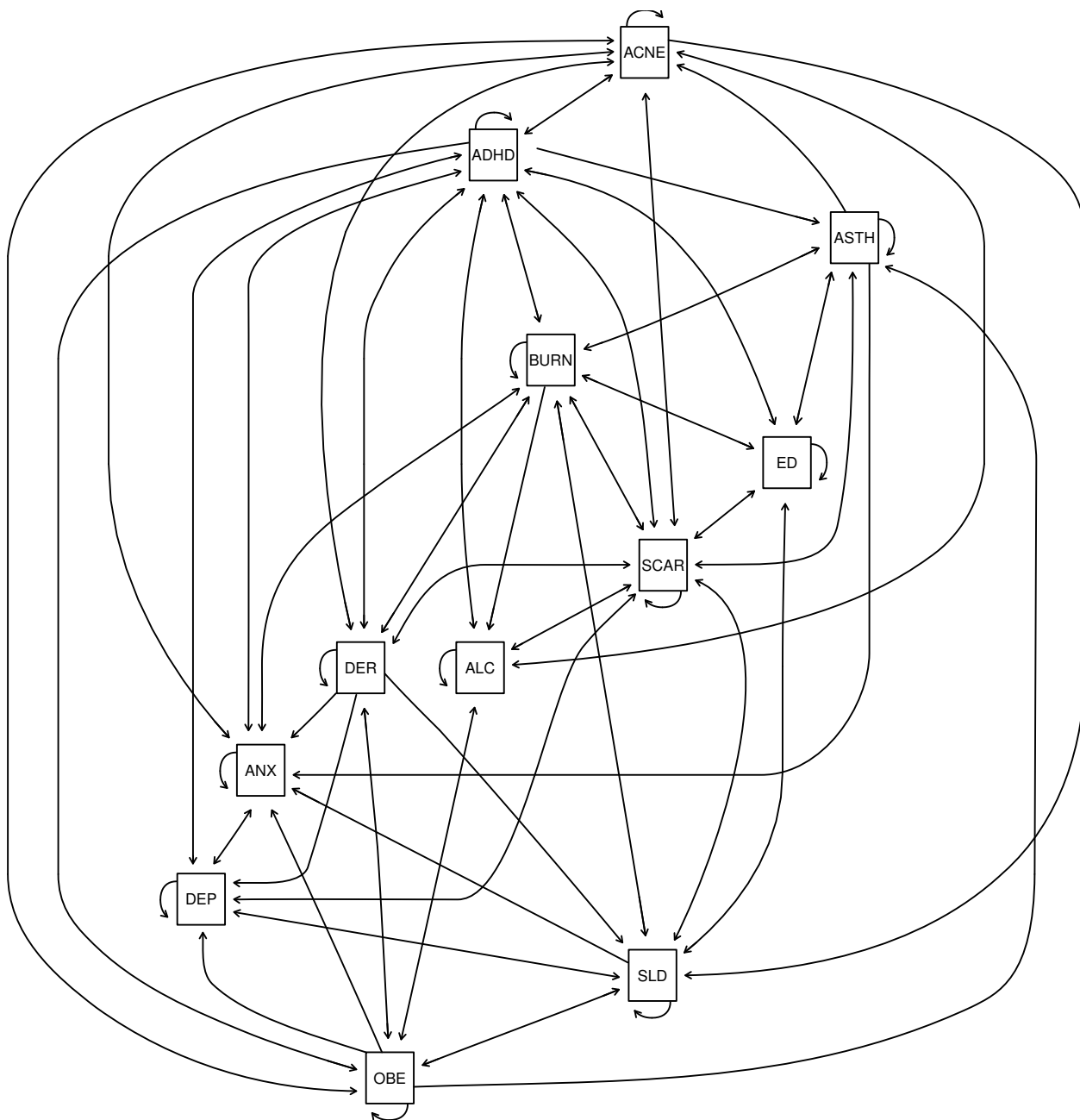


Figure 2: Average proportion of explained variance over all conditions explained by the dynamic Bayesian networks learned from the first year's worth of data (training set) in the remaining weeks (validation set) for various values of the penalty coefficient w .

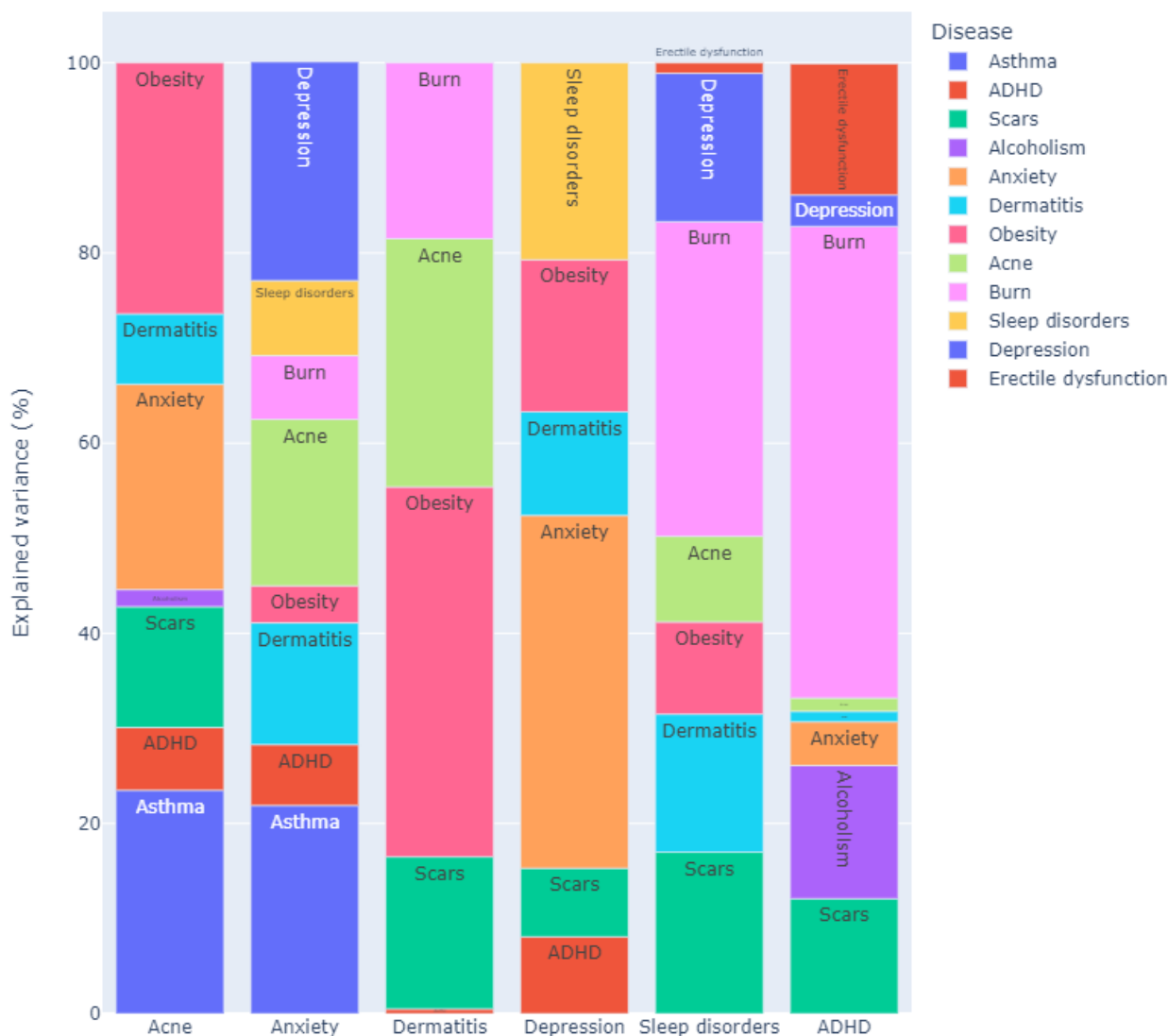


Figure 3: Proportions of the variance of some conditions of interest explained by their parents in the network shown in Figure 1. The conditions are acne (ACNE), anxiety (ANX), depression (DEP), dermatitis (DER), sleep disorder (SLD) and ADHD. The proportions are computed excluding the contribution of the condition itself from the previous time point in the data.

