

# 1 Discordance between gut-derived appetite hormones and energy 2 intake in humans

3 Aaron Hengist<sup>1</sup>, Christina M. Sciarrillo<sup>1</sup>, Juen Guo<sup>1</sup>, Mary Walter<sup>1</sup>, Kevin D. Hall<sup>1\*</sup>

4 <sup>1</sup>National Institute of Diabetes and Digestive and Kidney Diseases, NIH, Bethesda, MD, USA

5 \*Corresponding Author: [kevin.hall@nih.gov](mailto:kevin.hall@nih.gov)

6

## 7 **Abstract**

8 Gut-derived hormones affect appetite. Ghrelin increases hunger and decreases after food intake,  
9 whereas satiation and satiety are induced by peptide YY (PYY), glucagon-like peptide-1 (GLP-1),  
10 and perhaps glucose-dependent insulintropic polypeptide (GIP) which are increased after food  
11 intake [1-3]. These gut-derived appetite hormones have been theorized to play a role in the  
12 weight-loss that results from bariatric surgery [4, 5] and agonists of GLP-1 and GIP receptors  
13 have become successful medical treatments for obesity [6-8]. Circulating concentrations of gut-  
14 derived appetite hormones can be influenced by dietary macronutrient composition [9-13], which  
15 provides a theoretical basis for why some diets may help facilitate weight loss better than others.  
16 We investigated inpatient adults in a randomized crossover study and demonstrated that, after 2  
17 weeks of eating a low carbohydrate (LC) diet (75.8% fat, 10.0% carbohydrate), a LC meal resulted  
18 in significantly greater postprandial GLP-1, GIP, and PYY but lower ghrelin compared to an  
19 isocaloric low fat (LF) meal after 2 weeks of eating a LF diet (10.3% fat, 75.2% carbohydrate; all  
20  $p \leq 0.02$ ). However, the observed differences in gut-derived appetite hormones were  
21 incommensurate with subsequent ad libitum energy intake across the day, which was  $551 \pm 103$   
22 kcal ( $p < 0.0001$ ) greater following the LC diet as compared to the LF diet. These data suggest that  
23 other diet-related factors can dominate the effects of gut-derived appetite hormones on ad libitum  
24 energy intake, at least in the short-term.

25

26

27 We recently studied 20 inpatient adults who were exposed to two diets varying widely in the  
28 proportion of fat to carbohydrate for periods of 2 weeks each in random order [14]. At the end of  
29 each ad libitum feeding period, the LC diet resulted in greater fasting concentrations of GLP-1  
30 and GIP, but similar concentrations of PYY and leptin, and lower concentrations of total ghrelin  
31 and active ghrelin, when compared to the LF diet (**Table 1**). **Fig. 1** demonstrates that the LC  
32 breakfast test meal delivered at the end of the ad libitum LC period resulted in greater mean  
33 postprandial plasma concentrations of active GLP-1 (LC meal:  $6.44 \pm 0.78$  pg·mL<sup>-1</sup>, LF meal:  
34  $2.46 \pm 0.26$  pg·mL<sup>-1</sup>;  $p < 0.0001$ ), GIP (LC meal:  $578 \pm 60$  pg·mL<sup>-1</sup>, LF meal:  $319 \pm 37$  pg·mL<sup>-1</sup>;  
35  $p = 0.0002$ ), and PYY (LC meal:  $65.6 \pm 5.6$  pg·mL<sup>-1</sup>, LF meal:  $50.7 \pm 3.8$  pg·mL<sup>-1</sup>;  $p = 0.02$ ) whereas  
36 total ghrelin (LC meal:  $184 \pm 25$  pg·mL<sup>-1</sup>, LF meal:  $261 \pm 47$  pg·mL<sup>-1</sup>;  $p = 0.0009$ ), active ghrelin (LC  
37 meal:  $91 \pm 9$  pg·mL<sup>-1</sup>, LF meal:  $232 \pm 28$  pg·mL<sup>-1</sup>;  $p < 0.0001$ ), and leptin (LC meal:  $26.9 \pm 6.5$  ng·mL<sup>-1</sup>,  
38 LF meal:  $35.2 \pm 7.5$  ng·mL<sup>-1</sup>;  $p = 0.01$ ) were lower as compared to an isocaloric LF breakfast test  
39 meal delivered at the end of the ad libitum LF period.

40  
41 After the breakfast test meal, ad libitum energy intake was greater during the LC diet at lunch  
42 ( $244 \pm 85$  kcal;  $p = 0.008$ ) and dinner ( $193 \pm 86$  kcal;  $p = 0.04$ ), but not snacks ( $114 \pm 63$  kcal;  $p = 0.12$ ),  
43 such that the total ad libitum energy intake over the rest of the day was significantly greater  
44 ( $551 \pm 103$  kcal;  $p < 0.0001$ ) as compared to when the same participants consumed the LF diet (**Fig.**  
45 **2**). Within each diet pattern, there were no significant correlations between subsequent ad libitum  
46 energy intake and the mean postprandial active GLP-1 (LC diet:  $r = -0.1$ ;  $p = 0.68$ , LF diet:  $r = -0.12$ ;  
47  $p = 0.60$ ), GIP (LC diet:  $r = -0.08$ ;  $p = 0.73$ , LF diet:  $r = 0.23$ ;  $p = 0.34$ ), PYY (LC diet:  $r = -0.23$ ;  $p = 0.32$ ,  
48 LF diet:  $r = -0.007$ ;  $p = 0.98$ ), total ghrelin (LC diet:  $r = 0.31$ ;  $p = 0.19$ , LF diet:  $r = 0.32$ ;  $p = 0.16$ ), active  
49 ghrelin (LC diet:  $r = 0.20$ ;  $p = 0.41$ , LF diet:  $r = 0.07$ ;  $p = 0.76$ ), or leptin (LC diet:  $r = -0.07$ ;  $p = 0.77$ , LF  
50 diet:  $r = -0.26$ ;  $p = 0.27$ ). The observed differences in gut-derived appetite hormones during the LC  
51 test meal would be expected to result in reduced appetite and lower ad libitum energy intake as  
52 compared to the LF diet. However, the opposite result was observed, with the LC diet resulting in  
53 an additional ~500 kcal consumed over the remainder of the day following the test meal, as  
54 compared to the LF diet. This difference was similar to the overall ~700 kcal·d<sup>-1</sup> difference  
55 between the diets averaged over two weeks [14].

56  
57 Only decreased concentrations of the adipokine leptin were commensurate with the direction of  
58 ad libitum energy intake differences between the LC and LF diets. The decrease in leptin following

59 the LC diet is in agreement with previous evidence comparing a ketogenic low carbohydrate diet  
60 with an isocaloric diet moderate in both carbohydrate and fat [15]. The decrease in leptin following  
61 LC is likely explained by decreased insulin and glucose concentrations, which were lower in LC  
62 compared to LF [14]. Previous studies have shown that small increases in insulin induced by  
63 glucose infusion of  $2.5 \text{ mg} \cdot \text{kg}^{-1} \cdot \text{min}$  were sufficient to offset the decrease in leptin observed with  
64 16 hours of fasting [16] and 24 hours of ketogenic carbohydrate restriction reduced leptin  
65 concentrations independent from changes in ad libitum energy intake and preceding changes in  
66 adiposity [17]. Therefore, the evidence suggests that changes in carbohydrate availability, rather  
67 than energy intake or energy balance, are key for altering leptin concentrations. Decreased leptin  
68 would theoretically increase appetite, as has been associated following weight loss [18]. Whilst it  
69 is possible that leptin, as a longer-term appetite signal, overrides the transient signals from gut-  
70 derived hormones, leptin concentrations did not correlate with ad libitum energy intake in the  
71 present study, so it is likely that other diet-related factors are more important in this context.

72

73 The diet differences in gut hormone responses may be explained by macronutrient composition  
74 of the diets and/or meals. The propensity for specific nutrients or foods to alter endogenous gut  
75 hormone concentrations has been reviewed previously [19, 20]. Early evidence suggested that  
76 small increases in GLP-1 were observed after isocaloric carbohydrate (glucose), fat (double  
77 cream), or protein (lean turkey) ingestion, whereas GIP only responded to carbohydrate and fat  
78 [21]. However, irrespective of nutrient, the food matrix also plays a large role in determining  
79 postprandial responses as demonstrated by isocaloric ingestion of glucose eliciting greater GLP-  
80 1 and GIP responses than brown rice or pearl barley [21]. With regards to carbohydrate  
81 manipulation, the increase in PYY observed following LC in the present study resembles the  
82 results of a similar randomized crossover study in participants with obesity who consumed  
83 isocaloric low-carbohydrate or low-fat diets for one week before ingesting a representative  
84 breakfast meal [22]. Similarly, high-fat drinks (38% carbohydrate, 50% fat) increase postprandial  
85 GLP-1 and PYY responses, without differences in postprandial ghrelin responses, compared to  
86 isocaloric (590 kcal) low-fat, high-carbohydrate drinks (84% carbohydrate, 3% fat), but these  
87 differences did not translate into differences in ad libitum energy intake in a subsequent lunch  
88 meal [10]. Instead, ad libitum intake was associated with ghrelin responses, which contrasts with  
89 our results because total and active ghrelin were reduced with the LC diet in comparison to the  
90 LF diet and did not correlate with energy intake.

91

92 Macronutrient manipulation, with food volume and energy density controlled, has been shown to  
93 alter postprandial GLP-1, GIP, PYY, active ghrelin, and total ghrelin responses, but did not alter  
94 subjective hunger or subsequent energy intake [9, 12, 13]. Over the course of our study, the LF  
95 diet resulted in  $\sim 700$  kcal·d<sup>-1</sup> less ad libitum energy intake as compared to the LC diet without  
96 significant differences in self-reported appetite [14]. Because postprandial responses of gut-  
97 derived appetite hormones depend on the amount of food consumed [23, 24], the expected diet  
98 differences in postprandial ghrelin, GLP-1, GIP, and PYY during the ad libitum period would likely  
99 be even greater than we observed following the isocaloric meal tests and further emphasizes that  
100 the expected effects of these appetite hormone differences were dominated by other diet  
101 differences.

102

103 Recent analysis of meals from our inpatient feeding studies suggests that energy density, eating  
104 rate, and proportion of hyper-palatable foods are positively associated with energy intake [25].  
105 Greater dietary energy density has consistently been shown to increase energy intake [26] and  
106 the LC diet had about double the energy density of the LF diet, a difference that mediated  
107  $24.4 \pm 5.5\%$  of the diet effect on meal energy intake [25]. A quicker eating rate increases energy  
108 intake of presented meals without altering subsequent hunger [27]. This could be related to  
109 sensory and physical properties of foods, like food texture [28]; for example, softer, less solid,  
110 less viscous foods are associated with increased eating rate [29]. Interestingly, eating rate of the  
111 LF diet was quicker than the LC diet in our study when expressed in grams per minute, but the  
112 higher energy density of the LC diet resulted in a greater eating rate than the LF diet when  
113 expressed in energy consumed per minute [14]. Hyper-palatable foods have recently been  
114 defined by quantitative thresholds of nutrient combinations (fat and sugar, fat and sodium, or  
115 carbohydrates and sodium) that may drive excess intake [30]. In our study, the LC diet had a  
116 greater proportion of hyper-palatable foods than the LF diet and mediated  $13.9 \pm 4.0\%$  of the diet  
117 effect on meal energy intake [25]. The availability of hyperpalatable foods in the US food system  
118 has increased from around 49% to around 69% in 30 years [31]. Emerging evidence suggests  
119 that hyper-palatable foods may be more rewarding [32], and that consumption is  
120 disproportionately increased during binge eating episodes in patients with bulimia nervosa [33].  
121 Whilst these factors may often be inter-related in real world settings, it is important for future work  
122 to isolate these diet-related factors and test their contribution to ad libitum energy intake in  
123 different dietary contexts.

124

125 Discordance between gut hormone responses and energy intake in the present study may appear  
126 to contradict the recent success of GLP-1 receptor agonists, but quantitative considerations of  
127 dose and exposure reconcile our findings. Specifically, the estimated active GLP-1 steady state  
128 average exposure concentration,  $C_{avg}$ , for the present study had mean (95% CI) values of 0.034  
129 (0.029, 0.043)  $\text{nmol}\cdot\text{L}^{-1}$  for LF and 0.086 (0.071, 0.113)  $\text{nmol}\cdot\text{L}^{-1}$  for LC, which are orders of  
130 magnitude lower than the  $C_{avg}$  of both oral and subcutaneous semaglutide ranging from  $\sim 3 \text{ nmol}\cdot\text{L}^{-1}$   
131 <sup>1</sup> up to  $\sim 30 \text{ nmol}\cdot\text{L}^{-1}$  with oral and subcutaneous semaglutide, respectively [34]. Such high  $C_{avg}$   
132 with pharmacological treatment is due to the long half-life of semaglutide which has a similar  
133 binding affinity to the GLP-1 receptor as native GLP-1 [35]. Furthermore, pharmacological  
134 engagement of the GLP-1 receptor may act differently from nutrient-stimulated gut hormones. For  
135 example, endogenous GLP-1 may affect the hypothalamus through neuronal signaling from the  
136 gut to brain via solitary tract neurons, whereas exogenous GLP-1 receptor agonists may directly  
137 engage hypothalamic and brainstem GLP-1 receptors [8]. With this context, changes in  
138 endogenous gut hormone concentrations induced by diet may be too weak to affect energy intake.  
139 Indeed, mouse models that knockout the GLP-1 receptor [36] or delete intestinal GLP-1  
140 production [37] do not result in a body weight or food intake phenotype, suggesting that  
141 endogenous GLP-1 has a limited effect on appetite in the normal physiological range.

142

143 Some forms of bariatric surgery result in substantial increases in postprandial GLP-1 and PYY  
144 [38-40], likely due to altered gastric emptying and intestinal nutrient delivery. It is thought that the  
145 magnitude of the post-surgical changes in postprandial gut hormone responses are  
146 mechanistically linked to reduced appetite and energy intake. Infusion of GLP-1, PYY, and  
147 oxyntomodulin in healthy participants that mimics the concentrations observed following Roux-  
148 en-Y gastric bypass reduced energy intake at lunch and dinner by  $\sim 400 \text{ kcal}$  (32%) [2]. The active  
149 GLP-1 and PYY concentrations achieved were around  $26 \text{ pmol}\cdot\text{L}^{-1}$  ( $85 \text{ pg}\cdot\text{mL}^{-1}$ ) and  $80 \text{ pmol}\cdot\text{L}^{-1}$   
150 ( $320 \text{ pg}\cdot\text{mL}^{-1}$ ) respectively. For active GLP-1, these concentrations are around 13-fold and 35-  
151 fold greater than mean postprandial concentrations following the LC and LF meals in the present  
152 study, and for PYY they are around 5-fold and 6-fold greater. This again suggests that  
153 substantially greater increases in gut hormone concentrations are required to have meaningful  
154 effects on appetite and energy intake, likely greater than is achievable by diet interventions alone.

155

156 A limitation of the current study is that participants had no choice regarding the foods available  
157 for consumption. They could only choose the quantity of the foods eaten. While the gut-derived  
158 appetite hormones were not a dominant factor determining energy intake in this setting, it is  
159 possible that such differences in appetite hormones in a real-world setting might alter food choices  
160 at subsequent meals and thereby alter energy intake. Nevertheless, our study suggests that  
161 differences in dietary factors like energy density or proportion of hyper-palatable foods may play  
162 a greater role in appetite regulation than endogenous gut-derived appetite hormones, at least in  
163 the short term. Future research should aim to identify such diet differences that influence energy  
164 intake and evaluate whether their effects and their potential discordance with gut-derived appetite  
165 hormones persist over time.

166

## 167 **Methods**

168 These data are exploratory endpoints from a registered clinical trial conducted at the Metabolic  
169 Clinical Research Unit at the NIH Clinical Center and approved by the institutional board of the  
170 National Institute of Diabetes & Digestive & Kidney Diseases (NCT03878108). Detailed methods  
171 have been published previously [14]. In brief, at the end of the second inpatient week of  
172 consuming either an ad libitum low carbohydrate (LC) or low fat (LF) diets and after an overnight  
173 fast, 20 adults (male n=11, female n=9; mean±SD, age 30±6 years; body mass 80.8±18.2 kg;  
174 body mass index 27.8±5.9 kg·m<sup>-2</sup>; fat mass 26.9±11.2 kg; body fat percentage 32.8±9.8%; resting  
175 energy expenditure 1550±287 kcal·d<sup>-1</sup>) consumed liquid meals matching the macronutrient  
176 content of the prevailing diet and amounting to 30% of the estimated daily calorie requirements  
177 as determined by 1.6 multiplied by the resting energy expenditure measured at screening. Mean  
178 (range) of energy in the test meals was 777 (532 to 1043) kcal. The LC test meal was 10%  
179 carbohydrate, 75% fat, and 15% protein whereas the LF test meal was 75% carbohydrate, 10%  
180 fat, and 15% protein. Blood samples were obtained at 0, 10, 20, 30, 60, 90, 120, 180, 240, 300,  
181 and 360 minutes after the meals in tubes containing a protease inhibitor cocktail (including DPPIV  
182 inhibitor and aprotinin) to measure GLP-1, GIP, PYY, total ghrelin, active ghrelin, and leptin using  
183 multiplex immunoassays (Meso Scale Diagnostics).

184

185 After the breakfast mixed meal tests, ad libitum food intake was measured over the rest of the  
186 day including lunch, dinner, and snacks by weighing the remaining food and beverages to

187 calculate the amount of each food consumed and energy intake was calculated using ProNutra  
188 software (v.3.4, Viocare) with nutrient values derived from the USDA National Nutrient Database  
189 for Standard Reference, Release 26 and the USDA Food and Nutrient Database for Dietary  
190 Studies, 4.0. Statistical analyses were performed using SAS (v.9.4; SAS Institute) and Prism  
191 (v.9.5.0; GraphPad). Mean plasma concentrations were calculated by dividing total area under  
192 the curve (tAUC) by 360 minutes. Active GLP-1  $C_{avg}$  was estimated by multiplying the 6-hour  
193 postprandial tAUC by 3 (18 h) and multiplying the postabsorptive (fasting) concentration by 360  
194 minutes (6 h), to get 24-hour exposure, and dividing by 24. The conversion factor used for GLP-  
195 1 was  $1 \text{ pmol}\cdot\text{L}^{-1} = 3.287 \text{ pg}\cdot\text{mL}^{-1}$ . Data were checked for normality using Shapiro-Wilk test,  
196 differences between conditions were assessed using paired t-tests for normally distributed and  
197 Wilcoxon tests for non-normally distributed data. Simple linear correlation was used to explore  
198 associations between gut hormone responses and ad libitum energy intake. Significance was  
199 accepted as  $p \leq 0.05$ .

## 200 **Acknowledgements**

201 This work was supported by the Intramural Research Program of the NIH, National Institute of  
202 Diabetes & Digestive & Kidney Diseases under award number 1ZIADK013037. We thank the  
203 nursing and nutrition staff at the NIH Metabolic Clinical Research Unit for their invaluable  
204 assistance with this study. We thank the study participants for their invaluable contribution.

## 205 **Author contributions**

206 KDH designed the study, MW performed the biochemical analyses, JG and KDH analyzed the  
207 data, AH, CMS, JG, and KDH interpreted the data, drafted the manuscript, and approved the final  
208 version.

## 209 **Competing interests**

210 The authors declare no competing interests.



211 **Tables**

212 **Table 1. Fasting concentrations of gut-derived appetite hormones and leptin in the second week**  
213 **of low carbohydrate (LC) or low fat (LF) diet. Data are mean  $\pm$  SEM, n=20.**  
214

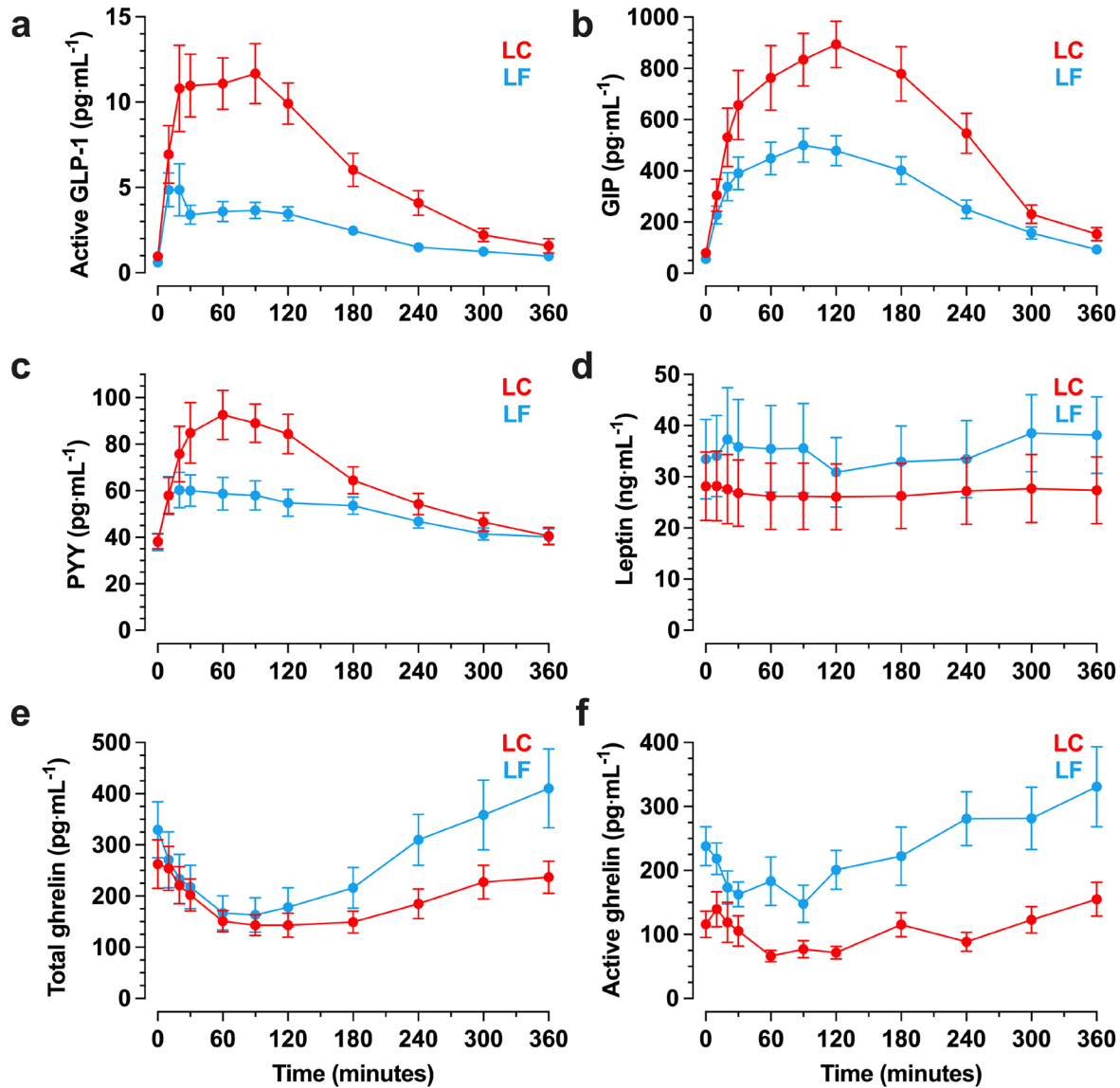
	LC	LF	<i>p</i> value LC vs LF
Active GLP-1 (pg·mL <sup>-1</sup> )	0.96 $\pm$ 0.14	0.61 $\pm$ 0.06	0.01
GIP (pg·mL <sup>-1</sup> )	80 $\pm$ 13	56 $\pm$ 8	0.03
PYY (pg·mL <sup>-1</sup> )	38.2 $\pm$ 3.2	38.0 $\pm$ 3.7	0.94
Total ghrelin (pg·mL <sup>-1</sup> )	263 $\pm$ 48	329 $\pm$ 55	0.004
Active ghrelin (pg·mL <sup>-1</sup> )	116 $\pm$ 21	238 $\pm$ 30	0.0002
Leptin (ng·mL <sup>-1</sup> )	28.2 $\pm$ 6.7	33.5 $\pm$ 7.8	0.39

215



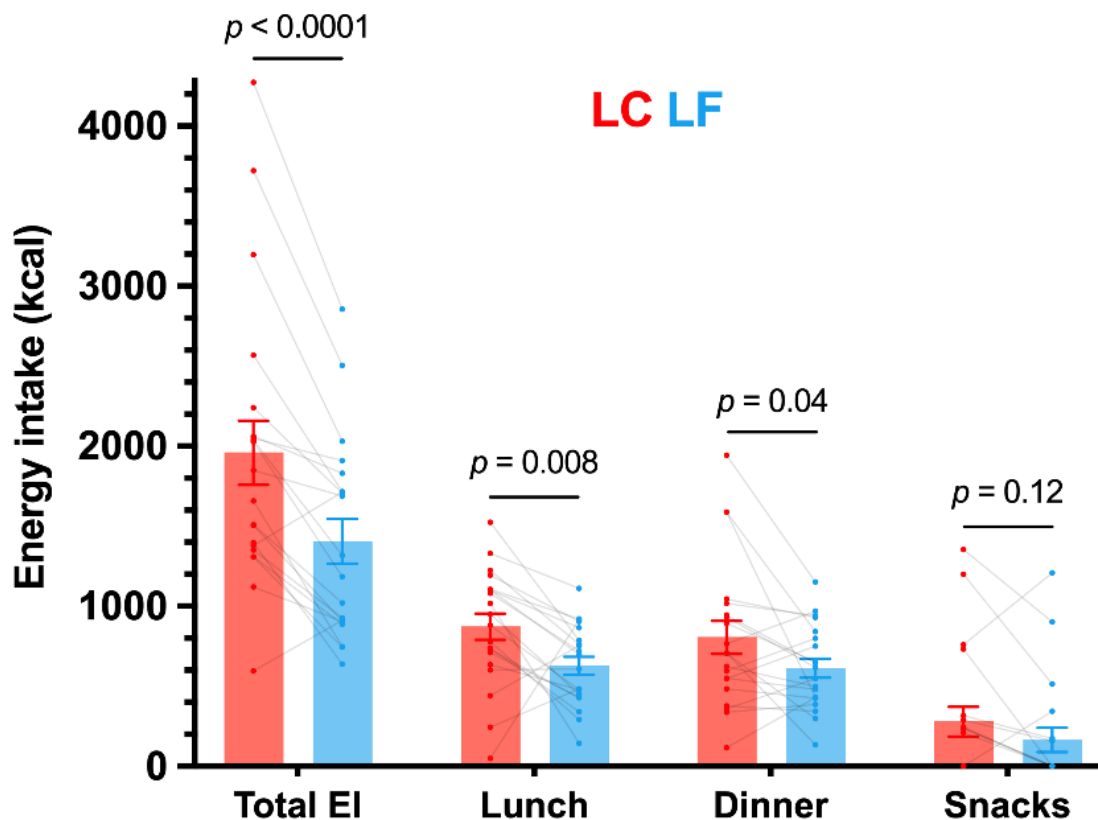
216 **Figures**

217 **Figure 1. Postprandial a) active glucagon-like peptide-1 (GLP-1), b) glucose-dependent**  
218 **insulinotropic polypeptide (GIP), c) peptide YY (PYY), d) leptin, e) total ghrelin, and f) active ghrelin**  
219 **responses to isocaloric low carbohydrate (LC) or low fat (LF) meals following habituation to each**  
220 **diet in a randomized crossover design. Mean (range) of energy in the test meals was 777 (532 to**  
221 **1043) kcal. Data are mean  $\pm$  SEM. n=20.**



222

223 **Figure 2. Total energy intake (EI), and energy intake from lunch, dinner, and snacks throughout the**  
224 **day after isocaloric low carbohydrate (LC) or low fat (LF) meals following habituation to each diet**  
225 **in a randomized crossover design. Mean (range) of energy in the test meals was 777 (532 to 1043)**  
226 **kcal. Data are mean  $\pm$  SEM and individual responses. n=20.**



227

## 228 References

- 229 1. Sato T, Nakamura Y, Shiimura Y, Ohgusu H, Kangawa K, Kojima M: **Structure, regulation and**  
230 **function of ghrelin.** *J Biochem* 2012, **151**(2):119-128.
- 231 2. Tan T, Behary P, Tharakan G, Minnion J, Al-Najim W, Albrechtsen NJW, Holst JJ, Bloom SR: **The**  
232 **Effect of a Subcutaneous Infusion of GLP-1, OXM, and PYY on Energy Intake and Expenditure in**  
233 **Obese Volunteers.** *The Journal of clinical endocrinology and metabolism* 2017, **102**(7):2364-2372.
- 234 3. Samms RJ, Goghlan MP, Sloop KW: **How May GIP Enhance the Therapeutic Efficacy of GLP-1?**  
235 *Trends in Endocrinology and Metabolism* 2020, **31**(6):410-421.
- 236 4. Holst JJ, Madsbad S, Bojsen-Moller KN, Svane MS, Jorgensen NB, Dirksen C, Martinussen C:  
237 **Mechanisms in bariatric surgery: Gut hormones, diabetes resolution, and weight loss.** *Surg Obes*  
238 *Relat Dis* 2018, **14**(5):708-714.
- 239 5. Troke RC, Tan TM, Bloom SR: **The future role of gut hormones in the treatment of obesity.** *Ther*  
240 *Adv Chronic Dis* 2014, **5**(1):4-14.
- 241 6. Jastreboff AM, Aronne LJ, Ahmad NN, Wharton S, Connery L, Alves B, Kiyosue A, Zhang S, Liu B,  
242 Bunck MC *et al*: **Tirzepatide Once Weekly for the Treatment of Obesity.** *N Engl J Med* 2022,  
243 **387**(3):205-216.
- 244 7. Wilding JPH, Batterham RL, Calanna S, Davies M, Van Gaal LF, Lingvay I, McGowan BM, Rosenstock  
245 J, Tran MTD, Wadden TA *et al*: **Once-Weekly Semaglutide in Adults with Overweight or Obesity.**  
246 *N Engl J Med* 2021, **384**(11):989-1002.
- 247 8. Drucker DJ, Holst JJ: **The expanding incretin universe: from basic biology to clinical translation.**  
248 *Diabetologia* 2023.
- 249 9. Foster-Schubert KE, Overduin J, Prudom CE, Liu J, Callahan HS, Gaylinn BD, Thorner MO,  
250 Cummings DE: **Acyl and total ghrelin are suppressed strongly by ingested proteins, weakly by**  
251 **lipids, and biphasically by carbohydrates.** *The Journal of clinical endocrinology and metabolism*  
252 2008, **93**(5):1971-1979.
- 253 10. Gibbons C, Caudwell P, Finlayson G, Webb DL, Hellstrom PM, Naslund E, Blundell JE: **Comparison**  
254 **of postprandial profiles of ghrelin, active GLP-1, and total PYY to meals varying in fat and**  
255 **carbohydrate and their association with hunger and the phases of satiety.** *The Journal of clinical*  
256 *endocrinology and metabolism* 2013, **98**(5):E847-855.
- 257 11. Helou N, Obeid O, Azar ST, Hwalla N: **Variation of postprandial PYY 3-36 response following**  
258 **ingestion of differing macronutrient meals in obese females.** *Ann Nutr Metab* 2008, **52**(3):188-  
259 195.
- 260 12. van der Klaauw AA, Keogh JM, Henning E, Trowse VM, Dhillo WS, Ghatei MA, Farooqi IS: **High**  
261 **Protein Intake Stimulates Postprandial GLP1 and PYY Release.** *Obesity* 2013, **21**(8):1602-1607.
- 262 13. Raben A, Agerholm-Larsen L, Flint A, Holst JJ, Astrup A: **Meals with similar energy densities but**  
263 **rich in protein, fat, carbohydrate, or alcohol have different effects on energy expenditure and**  
264 **substrate metabolism but not on appetite and energy intake.** *Am J Clin Nutr* 2003, **77**(1):91-100.
- 265 14. Hall KD, Guo J, Courville AB, Boring J, Brychta R, Chen KY, Darcey V, Forde CG, Gharib AM,  
266 Gallagher I *et al*: **Effect of a plant-based, low-fat diet versus an animal-based, ketogenic diet on**  
267 **ad libitum energy intake.** *Nat Med* 2021, **27**(2):344-353.
- 268 15. Hall KD, Chen KY, Guo J, Lam YY, Leibel RL, Mayer LE, Reitman ML, Rosenbaum M, Smith SR, Walsh  
269 BT *et al*: **Energy expenditure and body composition changes after an isocaloric ketogenic diet in**  
270 **overweight and obese men.** *Am J Clin Nutr* 2016, **104**(2):324-333.
- 271 16. Sonnenberg GE, Krakower GR, Hoffmann RG, Maas DL, Hennes MM, Kissebah AH: **Plasma leptin**  
272 **concentrations during extended fasting and graded glucose infusions: relationships with**  
273 **changes in glucose, insulin, and FFA.** *The Journal of clinical endocrinology and metabolism* 2001,  
274 **86**(10):4895-4900.

- 275 17. Hengist A, Davies RG, Rogers PJ, Brunstrom JM, van Loon LJC, Walhin JP, Thompson D, Koumanov  
276 F, Betts JA, Gonzalez JT: **Restricting sugar or carbohydrate intake does not impact physical**  
277 **activity level or energy intake over 24 h despite changes in substrate use: a randomised**  
278 **crossover study in healthy men and women.** *Eur J Nutr* 2022.
- 279 18. Keim NL, Stern JS, Havel PJ: **Relation between circulating leptin concentrations and appetite**  
280 **during a prolonged, moderate energy deficit in women.** *Am J Clin Nutr* 1998, **68**(4):794-801.
- 281 19. Bodnaruc AM, Prud'homme D, Blanchet R, Giroux I: **Nutritional modulation of endogenous**  
282 **glucagon-like peptide-1 secretion: a review.** *Nutr Metab (Lond)* 2016, **13**:92.
- 283 20. Watkins JD, Koumanov F, Gonzalez JT: **Protein- and Calcium-Mediated GLP-1 Secretion: A**  
284 **Narrative Review.** *Adv Nutr* 2021, **12**(6):2540-2552.
- 285 21. Elliott RM, Morgan LM, Tredger JA, Deacon S, Wright J, Marks V: **Glucagon-like peptide-1 (7-**  
286 **36)amide and glucose-dependent insulinotropic polypeptide secretion in response to nutrient**  
287 **ingestion in man: acute post-prandial and 24-h secretion patterns.** *J Endocrinol* 1993, **138**(1):159-  
288 166.
- 289 22. Essah PA, Levy JR, Sistrun SN, Kelly SM, Nestler JE: **Effect of macronutrient composition on**  
290 **postprandial peptide YY levels.** *Journal of Clinical Endocrinology & Metabolism* 2007,  
291 **92**(10):4052-4055.
- 292 23. Hengist A, Edinburgh RM, Davies RG, Walhin JP, Buniam J, James LJ, Rogers PJ, Gonzalez JT, Betts  
293 JA: **Physiological responses to maximal eating in men.** *The British journal of nutrition* 2020,  
294 **124**(4):407-417.
- 295 24. Lewis HB, Ahern AL, Solis-Trapala I, Walker CG, Reimann F, Gribble FM, Jebb SA: **Effect of reducing**  
296 **portion size at a compulsory meal on later energy intake, gut hormones, and appetite in**  
297 **overweight adults.** *Obesity (Silver Spring)* 2015, **23**(7):1362-1370.
- 298 25. Fazzino TL, Courville AB, Guo J, Hall KD: **Ad libitum meal energy intake is positively influenced by**  
299 **energy density, eating rate and hyper-palatable food across four dietary patterns.** *Nat Food*  
300 2023.
- 301 26. Robinson E, Khuttan M, McFarland-Lesser I, Patel Z, Jones A: **Calorie reformulation: a systematic**  
302 **review and meta-analysis examining the effect of manipulating food energy density on daily**  
303 **energy intake.** *Int J Behav Nutr Phy* 2022, **19**(1).
- 304 27. Robinson E, Almiron-Roig E, Rutters F, de Graaf C, Forde CG, Smith CT, Nolan SJ, Jebb SA: **A**  
305 **systematic review and meta-analysis examining the effect of eating rate on energy intake and**  
306 **hunger.** *Am J Clin Nutr* 2014, **100**(1):123-151.
- 307 28. Forde CG, de Graaf K: **Influence of Sensory Properties in Moderating Eating Behaviors and Food**  
308 **Intake.** *Frontiers in Nutrition* 2022, **9**.
- 309 29. Appleton KM, Newbury A, Almiron-Roig E, Yeomans MR, Brunstrom JM, de Graaf K, Geurts L,  
310 Kildegaard H, Vinoy S: **Sensory and physical characteristics of foods that impact food intake**  
311 **without affecting acceptability: Systematic review and meta-analyses.** *Obesity Reviews* 2021,  
312 **22**(8).
- 313 30. Fazzino TL, Rohde K, Sullivan DK: **Hyper-Palatable Foods: Development of a Quantitative**  
314 **Definition and Application to the US Food System Database.** *Obesity* 2019, **27**(11):1761-1768.
- 315 31. Fazzino TL, Bjorlie K, Rohde K, Smith A, Yi R: **Choices Between Money and Hyper-Palatable Food:**  
316 **Choice Impulsivity and Eating Behavior.** *Health Psychol* 2022, **41**(8):538-548.
- 317 32. Demeke S, Rohde K, Chollet-Hinton L, Sutton C, Kong KL, Fazzino TL: **Change in hyper-palatable**  
318 **food availability in the US food system over 30 years: 1988-2018.** *Public health nutrition* 2023,  
319 **26**(1):182-189.
- 320 33. Bjorlie K, Forbush KT, Chapa DAN, Richson BN, Johnson SN, Fazzino TL: **Hyper-palatable food**  
321 **consumption during binge-eating episodes: A comparison of intake during binge eating and**  
322 **restricting.** *Int J Eat Disorder* 2022, **55**(5):688-696.

- 323 34. Overgaard RV, Hertz CL, Ingwersen SH, Navarria A, Drucker DJ: **Levels of circulating semaglutide**  
324 **determine reductions in HbA1c and body weight in people with type 2 diabetes.** *Cell Rep Med*  
325 2021, **2(9):100387.**
- 326 35. Overgaard RV, Navarria A, Ingwersen SH, Baekdal TA, Kildemoes RJ: **Clinical Pharmacokinetics of**  
327 **Oral Semaglutide: Analyses of Data from Clinical Pharmacology Trials.** *Clin Pharmacokinet* 2021,  
328 **60(10):1335-1348.**
- 329 36. Scrocchi LA, Brown TJ, MaClusky N, Brubaker PL, Auerbach AB, Joyner AL, Drucker DJ: **Glucose**  
330 **intolerance but normal satiety in mice with a null mutation in the glucagon-like peptide 1**  
331 **receptor gene.** *Nat Med* 1996, **2(11):1254-1258.**
- 332 37. Song Y, Koehler JA, Baggio LL, Powers AC, Sandoval DA, Drucker DJ: **Gut-Proglucagon-Derived**  
333 **Peptides Are Essential for Regulating Glucose Homeostasis in Mice.** *Cell Metab* 2019, **30(5):976-**  
334 **986 e973.**
- 335 38. Lampropoulos C, Alexandrides T, Tsochatzis S, Kehagias D, Kehagias I: **Are the Changes in**  
336 **Gastrointestinal Hormone Secretion Necessary for the Success of Bariatric Surgery? A Critical**  
337 **Review of the Literature.** *Obes Surg* 2021, **31(10):4575-4584.**
- 338 39. Papamargaritis D, le Roux CW: **Do Gut Hormones Contribute to Weight Loss and Glycaemic**  
339 **Outcomes after Bariatric Surgery?** *Nutrients* 2021, **13(3).**
- 340 40. Yousseif A, Emmanuel J, Karra E, Millet Q, Elkalaawy M, Jenkinson AD, Hashemi M, Adamo M,  
341 **Finer N, Fiennes AG et al: Differential effects of laparoscopic sleeve gastrectomy and**  
342 **laparoscopic gastric bypass on appetite, circulating acyl-ghrelin, peptide YY3-36 and active GLP-**  
343 **1 levels in non-diabetic humans.** *Obes Surg* 2014, **24(2):241-252.**

344