

Temporal Trend in Mortality from COVID-19 Associated with Cardiovascular Disease

Short title:

Temporal Trend in COVID-19 Cardiovascular Mortality

Alexandra Sarau MD¹, Shengyuan Luo MD², Elaine Yi-Shuan Chen, MS^{3,4}, Susan Gawel PhD^{3,4},
Pankaja Desai PhD⁵, Nagarjuna Tippireddy⁶, Anil J. Saldanha⁷, Tisha Suboc MD¹,
Gavin Cloherty PhD^{3,4}, Alan Landay PhD², Annabelle Santos Volgman MD¹

Affiliations:

¹ Division of Cardiology, Rush University Medical Center, Chicago, IL

² Department of Internal Medicine, Rush University Medical Center, Chicago, IL

³ Abbott Diagnostics Division, Abbott Laboratories, Abbott Park, IL

⁴ Abbott Pandemic Defense Coalition, Abbott Park, IL

⁵ Biostatistics Core, Department of Healthy Aging, Rush University Medical Center, Chicago, IL

⁶ Clinical Research Analytics, Rush University Medical Center, Chicago, IL

⁷ Rush University System for Health, Chicago, IL

Word count: 3642

Corresponding Author:

Annabelle Santos Volgman, MD

Rush Heart Center for Women

1725 W. Harrison St., Suite 1159

Chicago, IL 60612

Annabelle_Volgman@rush.edu

Phone (cell): 312.618.8040

Abstract

Background:

The COVID-19 pandemic has endured for over three years with over twelve variants afflicting humans worldwide. The impact and longevity of the pandemic has driven the medical community and researchers to identify high-risk populations, yet few studies have explored temporal trends during the pandemic. The objective of this study is to investigate trends in all-cause mortality associated with co-morbid cardiovascular disease (CVD) throughout the consecutive waves of the COVID-19 pandemic.

Methods:

A retrospective cohort study was conducted on patients with COVID-19 infection who received care at a tertiary care center in Chicago between March 2020 and September 2022.

Multivariable logistic regression was used to investigate associations between co-existing CVD (defined as congestive heart failure, myocardial infarction, cerebrovascular disease, peripheral vascular disease) and mortality, adjusting for age, sex, race, and comorbidities defined in the Charlson comorbidity index.

Results:

The study included 38651 participants (mean age 45 years, 57.6% female, 11.4% with co-existing CVD). All-cause mortality in COVID-19 patients was highest during the Delta wave and remained elevated until the late Omicron wave. Mortality associated with co-existing CVD increased during the early pandemic waves, decreased in the later waves, but remained

elevated relative to the overall population. When adjusted for age, sex, and race, all-cause mortality was 2.3-fold higher in patients with co-existing CVD compared to those with non-CVD comorbidities (OR = 2.30, 95% CI 1.95 – 2.62; $p < 0.001$).

Conclusions:

While overall mortality rates declined toward the later waves of the pandemic, all-cause mortality associated with CVD remained elevated compared to individuals without CVD.

Key words: cardiovascular, COVID-19, temporal trends, mortality

Clinical Perspective:

What is new?

- This study found that individuals with co-existing CVD have 2.3-fold higher risk of all-cause mortality compared to those with non-CVD comorbidities.
- Mortality associated with co-existing CVD was highest during the early waves of the pandemic and declined during the later waves, yet remained elevated relative to the overall population.

What are the clinical implications?

- Increased all-cause mortality in COVID-19 patients with co-morbid CVD may be multifactorial from socioeconomic, psychosocial, behavioral, and biological variables.
- Individuals with co-existing CVD who become infected with COVID-19 should be considered an at-risk population for increased mortality.

Introduction

The impact of Coronavirus disease 2019 (COVID-19) has touched millions of lives worldwide, causing downstream effects at the level of healthcare systems, communities, and patients. The COVID-19 pandemic has persisted for over three years, from March 2020 until the present day, with over twelve SARS-CoV-2 variants afflicting the globe. Consequently, we have had the opportunity to learn about the long-term effects of COVID-19 infections, examine temporal trends, and identify high-risk populations.

Much of the research on COVID-19 mortality describes associations within a specific interval or wave of the pandemic. For example, retrospective studies and meta-analyses have repeatedly shown that advanced age and cardiovascular disease (CVD) are associated with worse overall morbidity and mortality outcomes in those infected with COVID-19¹⁻⁴. However, few studies have described the trends in COVID-19 mortality over time, starting from the emergence of the pandemic to the present day. A recent analysis of age-standardized death rates from 2010 to 2020 found that heart disease death rates declined by 9.8% from 2010 to 2019; however, death rates increased by 4.1% in 2020, coinciding with the advent of the pandemic⁵. Heart disease death rates in 2020 were even more pronounced among non-Hispanic Black adults, with an increase of 11.2%. Similarly, a cohort study by Sidney et al. noted an increase in risk-associated death from heart disease and stroke, with the highest risk observed in racial and ethnic minority groups, especially non-Hispanic Black and Hispanic individuals⁶.

The etiology of this unfavorable trend is not well defined. Still, multiple theories include reduced access to preventive health care, psychosocial and economic factors, increased stress and anxiety, diminished physical activity, and a possible predisposition to CVD in those with prior COVID-19 infection.

This study specifically investigates all-cause mortality associated with CVD through the sequential waves of the pandemic. It is important that trends associated with specific comorbidities, especially CVD, are detected as it has implications from not only a healthcare provider perspective but also from a public health and healthcare systems outlook.

Methods

Study Design

We performed a retrospective study among a cohort of patients who were under investigation for COVID-19 at Rush University System for Health from March 2020 to September 2022. We included patients greater than 18 years of age with a documented infection of COVID-19. We divided the pandemic into six distinct waves based on the predominant coronavirus variants and COVID-19 vaccine distribution. The study was approved by the Rush University Institutional Review Board (IRB) and exempt from informed consent.

Exposure

CVD was defined using the International Classification of Diseases (ICD)-10 codes: congestive heart failure (CHF), myocardial infarction (MI), cerebrovascular disease (CEVD), or peripheral vascular disease (PVD).

Outcomes

The primary outcome of this study is all-cause mortality, including both inpatient and outpatient deaths, as documented through a retrospective review of patients' electronic medical records. Inpatient deaths were defined as deaths associated with in-hospital admissions or emergency room visits; outpatient deaths were defined as deaths associated with out-of-hospital or patient vehicle encounters. The date of death was identified through a retrospective review of the patient record. The secondary outcome of this study is inpatient hospitalizations.

Statistical Analysis

Patient characteristics were summarized using descriptive statistics. We assessed associations between co-existing CVD and mortality using multivariable logistic regression, adjusting for age, sex, race, CVD comorbidities defined in the Charlson comorbidity index (CHF, MI, CEVD, and PVD), and non-CVD comorbidities defined in the Charlson comorbidity index (dementia, chronic pulmonary disease, rheumatic disease, peptic ulcer disease, mild liver disease, diabetes without chronic complication, diabetes with chronic complication, hemiplegia or paraplegia, renal disease, any malignancy [including lymphoma and leukemia, except malignant neoplasm of

skin], moderate or severe liver disease, metastatic solid tumor, and AIDS/HIV)⁷. A p-value of $p < 0.05$ was used to determine statistical significance. Age-stratified analyses were conducted to identify differences in demographics and comorbidities across age groups (18-49 years, 50-69 years, and 70-90 years). All statistical analyses were performed using R4.1.2.

Results

Among 38,651 patients (mean age 45 years, 57.6% female, 11.4% with existing CVD comorbidities), 1,046 (2.7%) died. Across all waves of the pandemic, higher mortality was seen among individuals aged 70-90 (11.7%) and aged >90 (24.5%), men (3.5%), and persons with co-existing CVD comorbidities (12.2%) (**Table 1**). All-cause mortality in patients with COVID-19 was highest during the Delta wave (3.8% from June 2021 to December 2021) (**Table 2**) and remained elevated until the late Omicron wave (until March 2022). Mortality associated with co-existing CVD increased similarly through the early pandemic waves. Although decreasing in later waves, the mortality for patients with co-existing CVD remained elevated relative to the overall adult population (**Figure 1**). When adjusted for age, sex, and race, all-cause mortality was 2.3-fold higher in patients with co-existing CVD compared to those without any comorbidities as defined by the Charlson comorbidity index (OR = 2.30, 95% CI 1.95 – 2.62; $p < 0.001$) (**Figure 2a**). Further analysis stratified by age groups (adults with age <50 years, age 50-69, and age 70-90) indicate that co-existing CVD had a markedly increased risk of death amongst those <50 years of age (OR=8.26, 95% CI 5.42 – 12.55) (**Figure 2b**).

Further analyses were performed to evaluate the four CVD comorbidities in the Charlson index (CHF, MI, CEVD, and PVD). Mortality in patients with COVID-19 was highest during the Alpha wave for CEVD (18.4%), CHF (19.8%), and PVD (15.8%). For those with a history of MI, the highest mortality occurred during the initial Wildtype variant (18.2%) (**Figure 3, Table 3**), plateaued through Wave 2 – 4 but began rising again during Wave 6. In contrast, mortality in patients with co-existing CEVD, CHF, or PVD continued to decline over time. Hospitalizations associated with co-existing CVD similarly peaked with the Alpha wave and generally declined with subsequent waves (**Figure 3, Table 3**).

Limitations

A limitation of this study is that this database could not determine if the mortality was due to the preexisting CVD in the patient or if it was due to the COVID-19 infection. Another limitation is that we used the date range to represent the COVID-19 variant, not the patients' actual viral infection.

Discussion

This retrospective cohort study highlights temporal trends in CVD-associated mortality compared to the general population of COVID-19 patients. While overall mortality rates declined toward the more recent waves of the pandemic with late Omicron variants predominating, all-cause mortality associated with CVD remained elevated compared to non-CVD-associated individuals. To our knowledge, this is the first study to report these findings and

one of few studies that describe temporal trends during the pandemic. While a few papers illustrate CV mortality trends over the last decade, they did not specifically analyze patients with documented COVID-19 infections^{5,6}. A study performed in Japan did look at temporal trends related to in-hospital COVID-19 mortality during three waves of the pandemic and noted a progressive decline in in-hospital mortality with each wave when adjusted for sex and age; however, they did not look at CVD associations⁸.

It is well known that cardiovascular comorbidities are associated with increased morbidity and mortality due to COVID-19⁹. However, whether individuals with prior COVID-19 infection are at increased risk of subsequent CVD events is still unclear. It has been suggested that patients with a prior COVID-19 infection are at increased risk of atrial fibrillation, venous thromboembolism, heart failure, and death; these events were noted particularly in patients who required hospitalization and more commonly in the early post-infection period within 30 days¹⁰. Similar findings were observed in a study by Wang et al., who noted a significantly higher 12-month risk of CVD in survivors of COVID-19 compared to non-infected controls¹¹.

There are no proven explanations for the increase in all-cause mortality in COVID-19 patients with associated CVD; however, the etiology is likely multifactorial. Probable factors include lack of access to or reluctance to seek healthcare during the pandemic, healthcare disparities in certain racial/ethnic and socioeconomic groups, hospital strain and limited healthcare resources, reduced physical activity, increased propensity for detrimental habits, and a potential predisposition to CVD in those with prior COVID-19 infection. The variations of

mortality rates in patients with a history of MI suggest that the variants of COVID-19 may have different virulence in atherosclerotic disease.

During the early waves of the pandemic, there was limited access to preventive health care and a shift toward telemedicine, which led to delays in detecting and treating cardiovascular conditions. A web-based survey of U.S. adults obtained in June 2020 revealed that 40.9% of adults avoided medical care due to COVID-19 concerns, with 12.0% avoiding urgent/emergent care and 31.5% avoiding routine care¹².

A recent study by Gotanda et al. describes a substantial decline in blood pressure monitoring during the early pandemic; they also found that blood pressure measurements in patients with chronic hypertension were significantly higher during the pandemic compared to pre-pandemic times¹³. Furthermore, there was a delay in care from the perspective of hospital systems, including deferral of elective procedures, such as outpatient coronary angiograms and percutaneous coronary interventions. There was even an estimated 38.0% reduction in STEMI activations during the early waves of the pandemic¹⁴. These factors likely propagated detrimental downstream cardiovascular sequelae such as congestive heart failure, MI, and cardiovascular mortality.

Multiple psychosocial and behavioral factors likely contributed to the temporal rise in CVD-associated mortality observed during the pandemic. Quarantine periods and social distancing became essential practices to mitigate the spread of COVID-19 infection; however, a recent

scoping review revealed that social isolation and loneliness are directly associated with increased mortality from coronary heart disease and stroke ¹⁵. Due to lockdown and quarantine circumstances, many people were required to stay in their homes. Over time, the work culture for many occupations has transitioned to “work from home” conditions. As a result, less participation in physical activity, increased alcohol consumption, higher anxiety scores, increased weight gain, and higher rates of obesity have been observed ^{16,17}.

Further research is needed to explore the possible underlying mechanism(s) behind observed increases in cardiovascular conditions in patients with COVID-19. It would also be valuable to explore direct causes for the temporal rise in CVD-associated mortality, as well as identify other temporal trends in the COVID-19 population, as these would have significant public health implications.

Acknowledgments

Sources of Funding

Abbott – analysis of data

Disclosures

ASV – Consulting (Pfizer, Merck, Sanofi, Janssen), NIH clinical trials, Novartis clinical trial, Apple Inc. stock

References

1. Pranata R, Huang I, Lim MA, Wahjoepramono EJ, July J. Impact of cerebrovascular and cardiovascular diseases on mortality and severity of COVID-19-systematic review, meta-analysis, and meta-regression. *J Stroke Cerebrovasc Dis*. Aug 2020;29(8):104949. doi:10.1016/j.jstrokecerebrovasdis.2020.104949
2. Silverio A, Di Maio M, Citro R, et al. Cardiovascular risk factors and mortality in hospitalized patients with COVID-19: systematic review and meta-analysis of 45 studies and 18,300 patients. *BMC Cardiovasc Disord*. Jan 7 2021;21(1):23. doi:10.1186/s12872-020-01816-3
3. Li X, Guan B, Su T, et al. Impact of cardiovascular disease and cardiac injury on in-hospital mortality in patients with COVID-19: a systematic review and meta-analysis. *Heart*. Aug 2020;106(15):1142-1147. doi:10.1136/heartjnl-2020-317062
4. Mishra P, Parveen R, Bajpai R, Samim M, Agarwal NB. Impact of cardiovascular diseases on severity of COVID-19 patients: A systematic review. *Ann Acad Med Singap*. Jan 2021;50(1):52-60. doi:10.47102/annals-acadmedsg.2020367
5. Woodruff RC, Tong X, Jackson SL, Loustalot FV, Vaughan AS. Abstract 9853: Trends in National Death Rates From Heart Disease in the United States, 2010–2020. *Circulation*. 2022;146(Suppl_1):A9853-A9853. doi:doi:10.1161/circ.146.suppl_1.9853
6. Sidney S, Lee C, Liu J, Khan SS, Lloyd-Jones DM, Rana JS. Age-Adjusted Mortality Rates and Age and Risk-Associated Contributions to Change in Heart Disease and Stroke Mortality, 2011-2019 and 2019-2020. *JAMA Netw Open*. Mar 1 2022;5(3):e223872. doi:10.1001/jamanetworkopen.2022.3872

7. Quan H, Sundararajan V, Halfon P, et al. Coding algorithms for defining comorbidities in ICD-9-CM and ICD-10 administrative data. *Med Care*. Nov 2005;43(11):1130-9.
doi:10.1097/01.mlr.0000182534.19832.83
8. Endo H, Lee K, Ohnuma T, Watanabe S, Fushimi K. Temporal trends in clinical characteristics and in-hospital mortality among patients with COVID-19 in Japan for waves 1, 2, and 3: A retrospective cohort study. *J Infect Chemother*. Oct 2022;28(10):1393-1401.
doi:10.1016/j.jiac.2022.06.013
9. Sahni S, Gupta G, Sarda R, Pandey S, Pandey RM, Sinha S. Impact of metabolic and cardiovascular disease on COVID-19 mortality: A systematic review and meta-analysis. *Diabetes Metab Syndr*. Nov-Dec 2021;15(6):102308. doi:10.1016/j.dsx.2021.102308
10. Raisi-Estabragh Z, Cooper J, Salih A, et al. Cardiovascular disease and mortality sequelae of COVID-19 in the UK Biobank. *Heart*. Oct 24 2022;doi:10.1136/heartjnl-2022-321492
11. Wang W, Wang CY, Wang SI, Wei JC. Long-term cardiovascular outcomes in COVID-19 survivors among non-vaccinated population: A retrospective cohort study from the TriNetX US collaborative networks. *EClinicalMedicine*. Nov 2022;53:101619.
doi:10.1016/j.eclinm.2022.101619
12. Czeisler M, Marynak K, Clarke KEN, et al. Delay or Avoidance of Medical Care Because of COVID-19-Related Concerns - United States, June 2020. *MMWR Morb Mortal Wkly Rep*. Sep 11 2020;69(36):1250-1257. doi:10.15585/mmwr.mm6936a4
13. Gotanda H, Liyanage-Don N, Moran AE, et al. Changes in Blood Pressure Outcomes Among Hypertensive Individuals During the COVID-19 Pandemic: A Time Series Analysis in

Three US Healthcare Organizations. *Hypertension*. Dec 2022;79(12):2733-2742.

doi:10.1161/hypertensionaha.122.19861

14. Garcia S, Albaghdadi MS, Meraj PM, et al. Reduction in ST-Segment Elevation Cardiac Catheterization Laboratory Activations in the United States During COVID-19 Pandemic. *J Am Coll Cardiol*. Jun 9 2020;75(22):2871-2872. doi:10.1016/j.jacc.2020.04.011

15. Cené CW, Beckie TM, Sims M, et al. Effects of Objective and Perceived Social Isolation on Cardiovascular and Brain Health: A Scientific Statement From the American Heart Association. *J Am Heart Assoc*. Aug 16 2022;11(16):e026493. doi:10.1161/jaha.122.026493

16. Restrepo BJ. Obesity Prevalence Among U.S. Adults During the COVID-19 Pandemic. *Am J Prev Med*. Jul 2022;63(1):102-106. doi:10.1016/j.amepre.2022.01.012

17. Flanagan EW, Beyl RA, Fearnbach SN, Altazan AD, Martin CK, Redman LM. The Impact of COVID-19 Stay-At-Home Orders on Health Behaviors in Adults. *Obesity (Silver Spring)*. Feb 2021;29(2):438-445. doi:10.1002/oby.23066

Table 1: Baseline characteristics of COVID-19-positive patients treated at Rush University System for Health from March 2020 to September 2022.

Characteristic	N (%) N=38651	Death N (%) N=1046	No Death N (%) N=37605
Age (years)			
18 - 49	23990 (62.1%)	125 (0.5%)	23865 (99.5%)
50-69	10540 (27.3%)	404 (3.8%)	10136 (96.2%)
70-90	3860 (10.0%)	453 (11.7%)	3407 (88.3%)
> 90	261 (0.7%)	64 (24.5%)	197 (75.5%)
Gender			
Female	22262 (57.6%)	475 (2.1%)	21787 (97.9%)
Male	16389 (42.4%)	571 (3.5%)	15818 (96.5%)
Race			
White	13008 (33.7%)	415 (3.2%)	12593 (96.8%)
Black or African American	11560 (29.9%)	316 (2.7%)	11244 (97.3%)
Asian or Other	1167 (3.0%)	32 (2.7%)	1135 (97.3%)
Undisclosed	12916 (33.4%)	283 (2.2%)	12633 (97.8%)
Comorbidity*			
CVD	4391 (11.4%)	535 (12.2%)	3856 (87.8%)
Myocardial infarction	1089 (2.8%)	165 (15.2%)	924 (84.8%)
Congestive heart failure	2120 (5.5%)	288 (13.6%)	1832 (86.4%)
Peripheral vascular disease	1593 (4.1%)	187 (11.7%)	1406 (88.3%)
Cerebrovascular disease	1836 (4.8%)	255 (13.9%)	1581 (86.1%)
Non-CVD	11784 (30.5%)	789 (6.7%)	10995 (93.3%)
Dementia	560 (1.4%)	99 (17.7%)	461 (82.3%)
Chronic pulmonary disease	4541 (11.7%)	228 (5.0%)	4313 (95%)
Rheumatic disease	606 (1.6%)	38 (6.3%)	568 (93.7%)
Peptic ulcer disease	250 (0.6%)	32 (12.8%)	218 (87.2%)
Mild liver disease	1434 (3.7%)	99 (6.9%)	1335 (93.1%)
Diabetes without chronic complication	3502 (9.1%)	208 (5.9%)	3294 (94.1%)
Diabetes with chronic complication	2089 (5.4%)	239 (11.4%)	1850 (88.6%)
Hemiplegia or paraplegia	202 (0.5%)	23 (11.4%)	179 (88.6%)
Renal disease	2253 (5.8%)	319 (14.2%)	1934 (85.8%)
Malignancy†	1825 (4.7%)	152 (8.3%)	1673 (91.7%)
Moderate or severe liver disease	199 (0.5%)	45 (22.6%)	154 (77.4%)
Metastatic solid tumor	505 (1.3%)	115 (22.8%)	390 (77.2%)
AIDS/HIV	142 (0.4%)	7 (4.9%)	135 (95.1%)

*CVD and non-CVD comorbidities are not mutually exclusive.

†Malignancy includes lymphoma and leukemia, except malignant neoplasm of skin.

Abbreviations: acquired immunodeficiency syndrome, AIDS; cardiovascular disease, CVD; human immunodeficiency virus, HIV.

Table 2: COVID-19 pandemic waves, hospitalization rates, and mortality rates of COVID-19 adult patients overall and with co-existing CVD

Wave Predominant COVID-19 Variant	Overall Adult Population			Adults With Co-Existing CVD		
	N	Hospitalization N (%)	Mortality N (%)	N	Hospitalization N (%)	Mortality N (%)
1: Wildtype+D614G (3/7/2020 – 3/20/2021)	21253	5901; 27.8%	627; 3.0%	2130	1142; 53.6%	297; 13.9%
2: Alpha (3/21/2021 – 6/19/2021)	1871	801; 42.8%	57; 3.0%	247	168; 68.0%	38; 15.4%
3: Delta (6/20/2021 – 12/11/2021)	3070	1259; 41.0%	118; 3.8%	372	229; 61.6%	56; 15.1%
4: Omicron BA.1 (12/12/2021 – 3/19/2022)	8236	2290; 27.8%	204; 2.5%	1028	552; 53.7%	119; 11.6%
5: Omicron BA.2 (3/20/2022 – 6/18/2022)	1750	469; 26.8%	18; 1.0%	232	119; 51.3%	12; 5.2%
6: Omicron BA.4/ BA.5 (6/19/2022 – (9/30/2022)	2471	797; 32.3%	22; 0.9%	382	184; 48.2%	13; 3.4%
Overall	38651	11517; 29.8%	1046; 2.7%	4391	2394; 54.5%	535; 12.2%

Table 3: COVID-19 pandemic waves, mortality (top), and hospitalization (bottom) rates of COVID-19 adult patients with co-existing CVD by CVD type.

Wave Predominant COVID-19 Variant	Cerebrovascular disease (CEVD)		Congestive heart failure (CHF)		Myocardial infarction (MI)		Peripheral vascular disease (PVD)	
	N	Mortality N (%)	N	Mortality N (%)	N	Mortality N (%)	N	Mortality N (%)
1:Wildtype+D614G (3/7/2020 – 3/20/2021)	846	143; 16.9%	1026	156; 15.2%	539	98; 18.2%	786	108; 13.7%
2:Alpha (3/21/2021 – 6/19/2021)	114	21; 18.4%	126	25; 19.8%	62	9; 14.5%	76	12; 15.8%
3:Delta (6/20/2021 – 12/11/2021)	168	29; 17.3%	174	27; 15.5%	112	16; 14.3%	122	17; 13.9%
4:Omicron BA.1 (12/12/2021 – 3/19/2022)	431	53; 12.3%	512	65; 12.7%	240	35; 14.6%	392	41; 10.5%
5:Omicron BA.2 (3/20/2022 – 6/18/2022)	108	4; 3.7%	99	7; 7.1%	49	2; 4.1%	88	5; 5.7%
6:Omicron BA.4/ BA.5 (6/19/2022 – 9/30/2022)	169	5; 3.0%	183	8; 4.4%	87	5; 5.7%	129	4, 3.1%
Overall	1836	255; 13.9%	2120	288; 13.6%	1089	165; 15.2%	1593	187; 11.7%

	Cerebrovascular disease (CEVD)	Congestive heart failure (CHF)	Myocardial infarction (MI)	Peripheral vascular disease (PVD)
--	-----------------------------------	--------------------------------------	-------------------------------	---

Wave Predominant COVID-19 Variant	N	Inpatient N (%)	N	Inpatient N (%)	N	Inpatient N (%)	N	Inpatient N (%)
1:Wildtype+D614G (3/7/2020 – 3/20/2021)	846	460; 54.4%	1026	601; 58.6%	539	324; 60.1%	786	430; 54.7%
2:Alpha (3/21/2021 – 6/19/2021)	114	78; 68.4%	126	90; 71.4%	62	44; 71.0%	76	51; 67.1%
3:Delta (6/20/2021 – 12/11/2021)	168	104; 61.9%	174	113; 64.9%	112	73; 65.2%	122	70; 57.4%
4:Omicron BA.1 (12/12/2021 – 3/19/2022)	431	243; 56.4%	512	303; 59.2%	240	135; 56.2%	392	207; 52.8%
5:Omicron BA.2 (3/20/2022 – 6/18/2022)	108	51; 47.2%	99	60; 60.6%	49	25; 51.0%	88	43; 48.9%
6:Omicron BA.4/ BA.5 (6/19/2022 – 9/30/2022)	169	84; 49.7%	183	99; 54.1%	87	44; 50.6%	129	61; 47.3%
Overall	1836	1020; 55.6%	2120	1266; 59.7%	1089	645; 59.2%	1593	862; 54.1%

Figure Legends

Figure 1. Mortality rate in each pandemic wave (Overall vs. co-existing cardiovascular disease).

Figure 2. Multivariable logistic regression model for (a) overall mortality and (b) age-stratified mortality.

Figure 3. Mortality (top) and hospitalization (bottom) rate in each pandemic wave (Overall vs co-existing CVD by CVD type).

Figure 1: Mortality rate in each pandemic wave (Overall vs. co-existing cardiovascular disease)

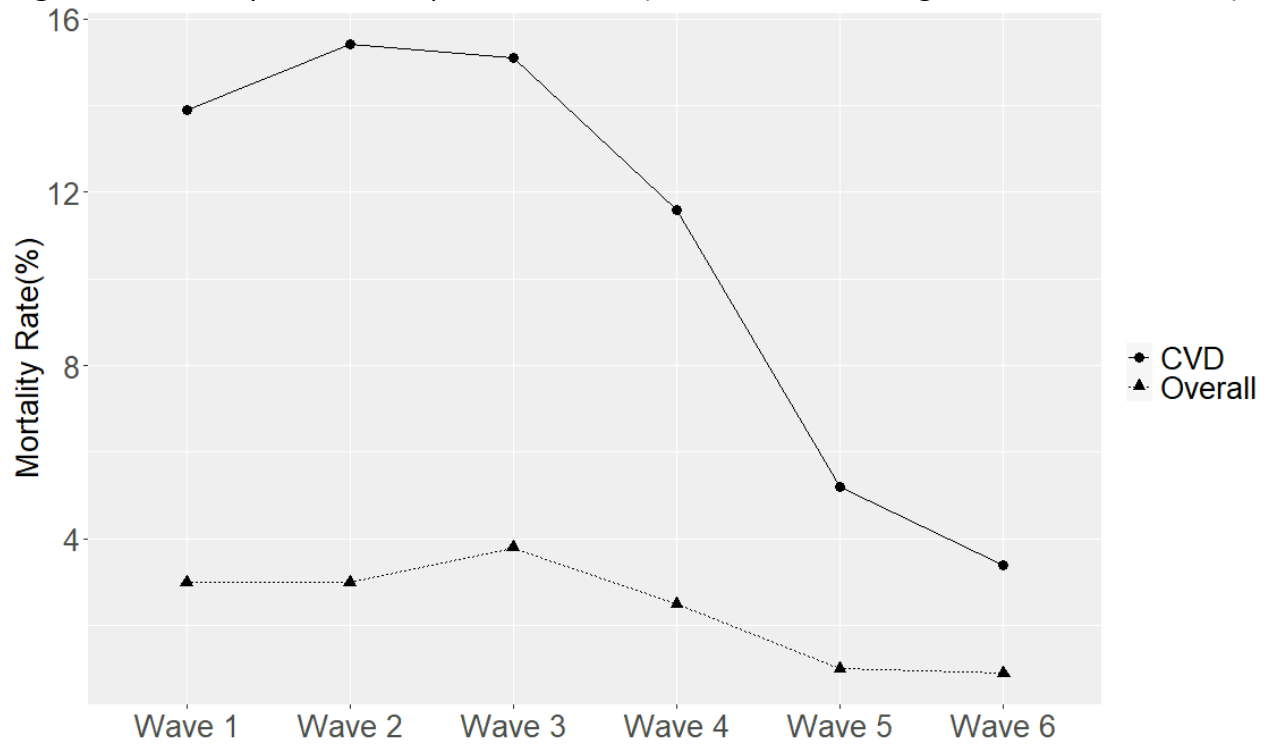


Figure 2: Multivariable logistic regression model for **(a)** overall mortality and **(b)** age-stratified mortality.

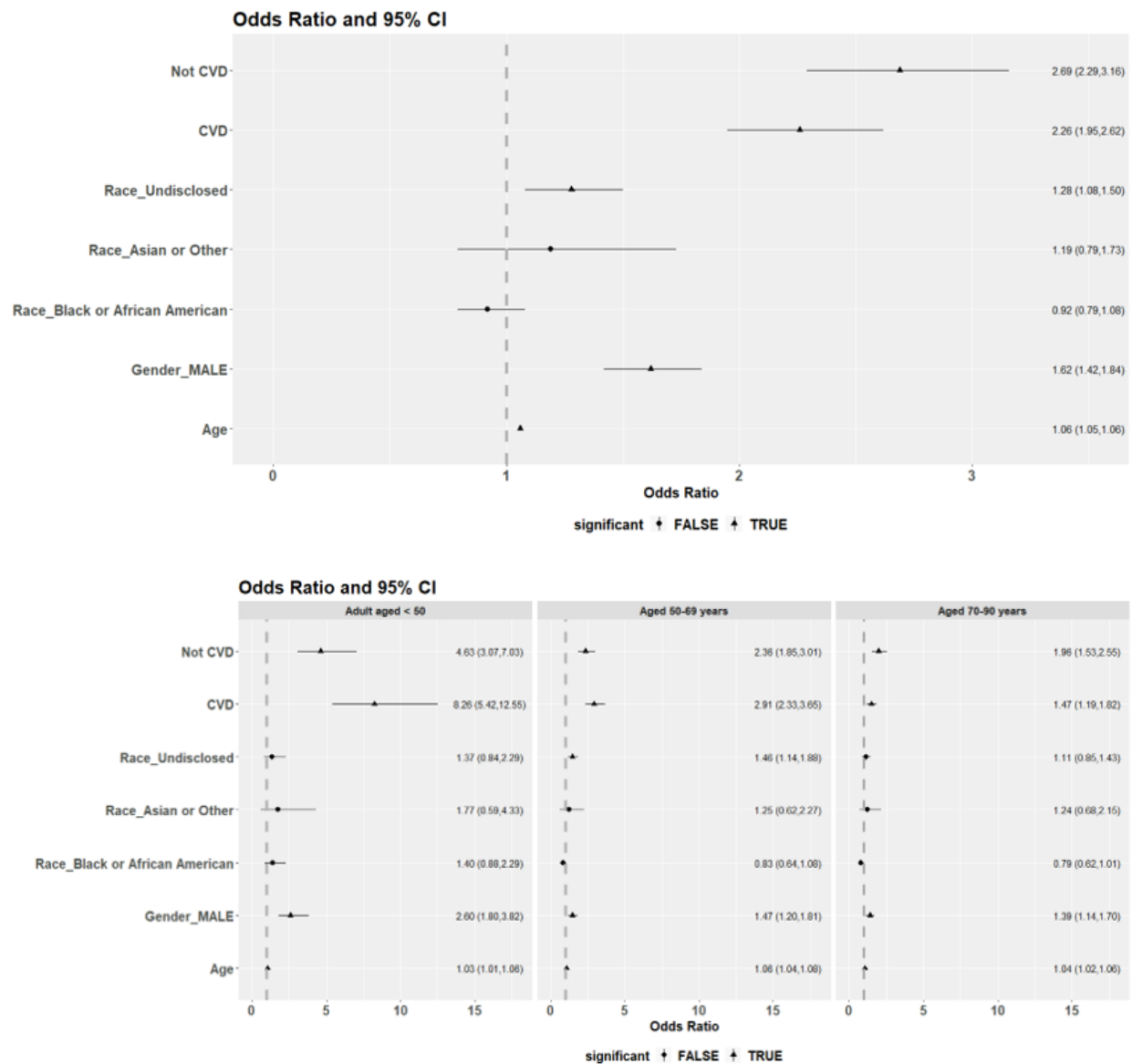
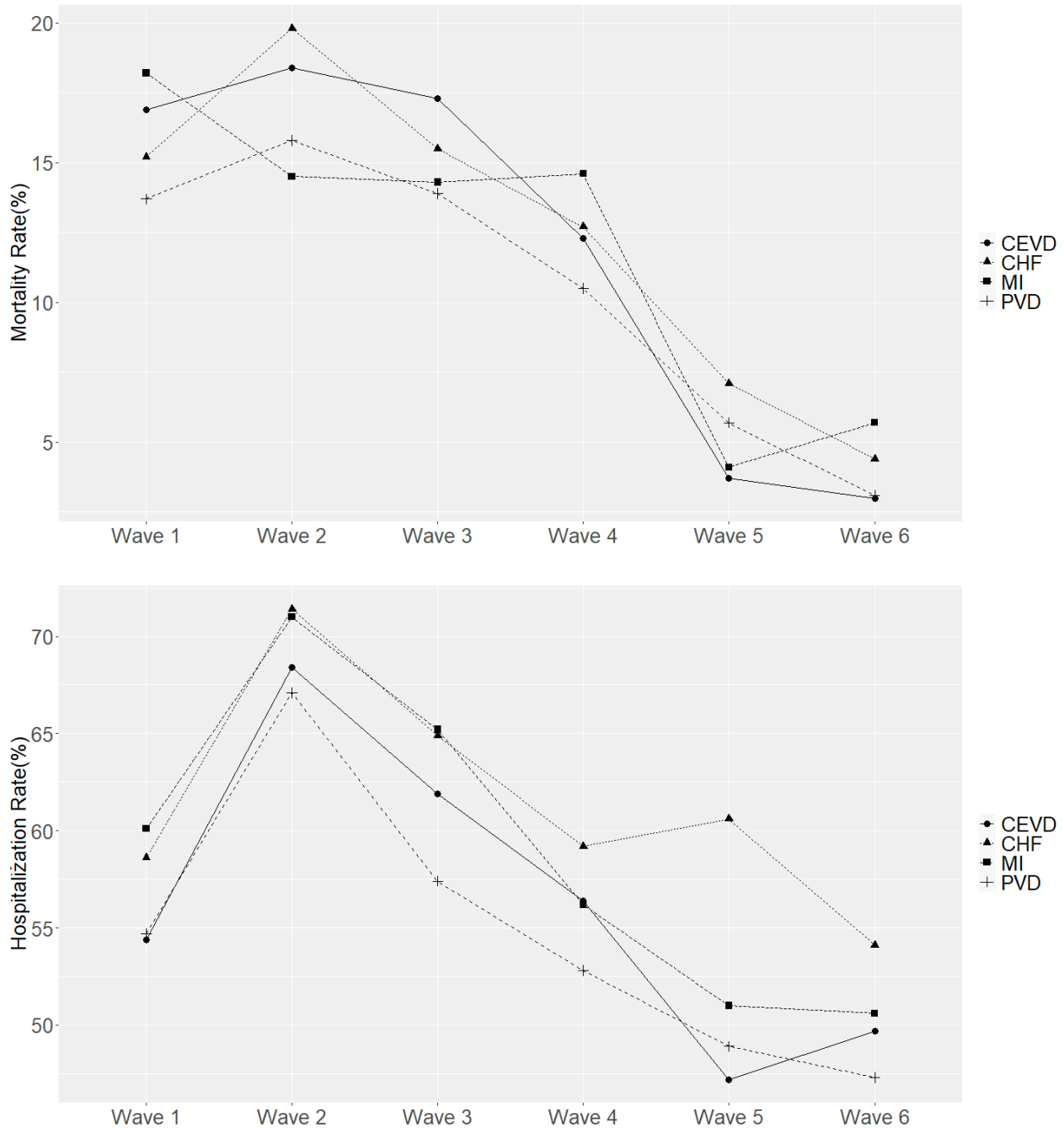


Figure 3: Mortality (top) and hospitalization (bottom) rate in each pandemic wave (Overall vs co-existing CVD)



Abbreviations: cerebrovascular disease, CEVD; congestive heart failure, CHF; myocardial infarction, MI; peripheral vascular disease, PVD.