

1 Mendelian randomisation analysis using GWAS and eQTL data to
2 investigate the relationship between chronotype and neuropsychiatric
3 disorders and their molecular basis

4

5 Shane Crinion¹, Cathy A. Wyse², Gary Donohoe¹, Lorna M. Lopez^{2¶}, Derek W. Morris^{1¶*}

6

7 1. Centre for Neuroimaging, Cognition and Genomics, School of Biological and Chemical
8 Sciences and School of Psychology, University of Galway, Galway, Ireland.

9 2. Department of Biology, Maynooth University, Maynooth, Ireland.

10

11 * Corresponding author

12 Email: derek.morris@universityofgalway.ie (DWM)

13

14 ¶These authors contributed equally to this work.

15

16

17

18 Abstract

19 A wide range of comorbidities have been observed with neuropsychiatric disorders, of which
20 sleep disturbances are one of the most common. Chronotype, a self-reported measurement of
21 an individual's preference for earlier or later sleep timing, is a proxy sleep measure that has
22 been linked to neuropsychiatric disorders (NPDs). By investigating how chronotype influences
23 risk for neuropsychiatric disorders and, vice versa, how risk for neuropsychiatric disorders
24 influences chronotype, we may identify modifiable risk factors for each phenotype. By
25 investigating the specific genetic mechanisms that are common to the risk of evening
26 chronotype and the risk of NPDs, we may gain further understanding of the relationship and
27 causal direction in these phenotypes. Here we use Mendelian randomisation (MR), a method
28 used to explore causal effects, to 1) study the causal relationships between neuropsychiatric
29 disorders and chronotype and 2) characterise the genetic components of these phenotypes.
30 Firstly, we investigated if a causal role exists between six neuropsychiatric disorders and
31 chronotype using the largest genome-wide association studies (GWAS) available. Secondly, we
32 integrated data from expression quantitative trait loci (eQTLs) to investigate the role of gene
33 expression alterations on these phenotypes. We also used colocalization to validate that the
34 same variant is causal for gene expression and each outcome. We identified that the evening
35 chronotype is causal for increased risk of schizophrenia and autism spectrum disorder and, in
36 the opposite direction, that insomnia and schizophrenia are causal for a tendency towards
37 evening chronotype. We identified twelve eQTLs where gene expression changes in brain or
38 blood were causal for one of the tested phenotypes (bipolar disorder, chronotype and
39 schizophrenia). These findings provide important evidence for the complex, bidirectional
40 relationship that exists between these sleep and neuropsychiatric disorders, and use gene
41 expression data to identify causal roles for genes at associated loci.

42

43 Author Summary

44 Sleep disturbances are commonly observed features of neuropsychiatric disorders. Chronotype,
45 a behavioural manifestation of an individual's preference for early or late sleep timing i.e.
46 morning chronotype means a preference for earlier sleep and wake times, has been used as a
47 behavioural marker of underlying circadian function. Here, we used data from the largest
48 genetic studies available to test the causal relationship between chronotype and risk for
49 neuropsychiatric disorders. We found that individuals with the evening chronotype have greater
50 risk for schizophrenia or autism spectrum disorder. In the other direction, we found insomnia or
51 schizophrenia diagnosis is causal for a tendency towards evening chronotype. We searched for
52 DNA variants that influence chronotype or risk for neuropsychiatric disorders through alterations
53 of gene expression in blood and brain tissues. We found twelve DNA variants with a significant
54 effect on chronotype or risk of either bipolar disorder or schizophrenia. These results
55 demonstrate that sleep and neuropsychiatric disorders have a complex bidirectional relationship
56 and that the causal role of some genes is due to variants that alter gene expression.

57

58 Introduction

59 Neuropsychiatric disorders include the adult-onset disorders of bipolar disorder (BD), major
60 depressive disorder (MDD) and schizophrenia (SZ), and the child-onset conditions of attention
61 deficit hyperactivity disorder (ADHD) and autism spectrum disorder (ASD). These disorders are
62 multifactorial, caused by polygenic inheritance of many genetic variants in combination with
63 various environmental factors (1). Symptoms of NPD are varied and include changes in
64 behaviour, brain function and cognition, that can be episodic or continuous and range from mild
65 to severe. Diagnosis of NPD is based on clinical evaluation of highly variable changes in
66 behaviour and the heterogeneous nature of these disorders along with the significant overlap
67 between diagnoses makes the identification of risk factors and molecular mechanisms difficult.

68
69 Sleep-related disorders are one of the most common comorbidities with neuropsychiatric
70 disorders and typically individuals with a neuropsychiatric diagnosis experience some degree of
71 difficulty sleeping (2). Insomnia is classed as a neuropsychiatric disorder and a sleep disorder
72 and is one of the most common comorbidities of each neuropsychiatric disorder listed above (3).
73 Evidence from genetic studies support an association between chronotype and changes in risk
74 for neuropsychiatric disorders (4). Chronotype is a behavioural manifestation of an individual's
75 underlying circadian rhythm e.g. having the morning chronotype means having a preference to
76 wake up and go to sleep earlier in the 24 hour day while having the evening chronotype means
77 to prefer to wake up and go to sleep later .

78
79 It is often time-consuming, expensive or unethical to conduct randomised controlled trials (RCT)
80 that could estimate the causal role of risk factors for neuropsychiatric disorders. An RCT cannot
81 be used to investigate the causal relationship between sleep disorders and NPD, as patients
82 could not be randomly allocated to sleep disruption groups. In such cases, Mendelian

83 randomisation (MR) is a powerful complementary approach that can be applied to estimate the
84 causal effect of an exposure on an outcome using instrumental variants (IVs) (5). For example,
85 genome-wide significant (GWS) SNPs for chronotype can be used as IVs to estimate the causal
86 effect of chronotype (exposure) on risk for a neuropsychiatric disorder (outcome). MR can be
87 applied bidirectionally, i.e., using GWS SNPs for neuropsychiatric disorders to estimate the
88 causal effect of neuropsychiatric disorders on chronotype.

89
90 To investigate the complex relationship between sleep and risk for neuropsychiatric disorders,
91 we apply MR here to investigate the role of the modifiable risk factor chronotype in risk for
92 neuropsychiatric disorders and predict the contribution of the genetic component to lifetime risk
93 for both phenotypes on each other. MR studies have identified a causal relationship between
94 four neuropsychiatric disorders (ADHD, BD, MDD and SZ) and sleep-related phenotypes (3, 6,
95 7, 8) and, in the opposite direction, a causal relationship between five sleep-related phenotypes
96 (daytime napping, insomnia, morning person, long sleep duration and sleep duration) and
97 changes in risk for neuropsychiatric disorders (3, 4, 6, 7). Our study here builds on previous
98 work by using the largest GWAS available to date to explore causal relationships between
99 chronotype and neuropsychiatric disorders. Our study also implements the new MR Pleiotropy
100 RESidual Sum and Outlier (MR-PRESSO) method, which uses simulation to detect and remove
101 horizontal pleiotropy (9). This may identify new causal associations or provide additional
102 evidence for the chronotype-neuropsychiatric disorder relationship.

103
104 MR analysis can be extended to study the biological mechanisms that are individually involved
105 in chronotype and risk for neuropsychiatric disorders. In this approach, expression quantitative
106 trait loci (eQTLs) are used as IVs to estimate the causal effect of gene expression (exposure) on
107 genetically-based outcomes, e.g., eQTLs are used to estimate the causative effect of changes
108 in gene expression (exposure) on risk for a neuropsychiatric disorder or chronotype (outcome).

109 MR and colocalization are used together as an approach to provide evidence for the association
110 between a genetic variant and disease risk (10). Previously this method has been implemented
111 to link changes in gene expression to psychiatric and neurodevelopmental disorders and identify
112 potential drug targets (11).

113
114
115 Overall, this study had two major objectives. The first was to investigate the causal relationship
116 between chronotype and neuropsychiatric disorders using MR with GWAS summary statistics.
117 To do this we used GWAS-based IVs associated with chronotype to investigate its effect on risk
118 of neuropsychiatric disorders (ADHD, ASD, BD, MDD, Insomnia and SZ) and we used GWAS-
119 based IVs associated with neuropsychiatric disorders to investigate their effect on chronotype.
120 The second objective was to investigate the causal relationship between genetic variants
121 associated with changes in gene expression and chronotype and/or neuropsychiatric disorders
122 using MR with eQTL and GWAS summary statistics. The eQTL data employed was from
123 PsychENCODE (<http://resource.psychencode.org/>) and GTEx (<https://gtexportal.org/home/>) for
124 a range of brain tissues (hippocampus, hypothalamus and prefrontal cortex) plus whole blood.

125
126

127 Materials & Methods

128 These methods follow the guidelines outlined in Strengthening the Reporting of Observational
129 Studies in Epidemiology using Mendelian Randomization (STROBE)-MR which was developed
130 to assist researchers to report MR studies in a clear and transparent way (12). STROBE-MR
131 provides guidelines to improve the quality and assessment of MR studies. The checklist
132 includes 20 items, of which the first three items have been addressed in the Title and
133 Introduction of this manuscript (1: indicating MR as the study design, 2: explaining the scientific
134 background and rationale of the study and justifying use of MR, and 3: stating specific
135 objectives). The remaining items are addressed in the Materials and Methods (items 4-9),
136 Results (items 10-13) and Discussion (items 14-20). The complete checklist and the relevant
137 text from the manuscript for each point is outlined in [Supplementary Table 1](#) (for first objective;
138 bi-directional MR study of chronotype and neuropsychiatric disorders) and [Supplementary Table](#)
139 [2](#) (for second objective; MR study of changes in gene expression on chronotype and risk of
140 neuropsychiatric disorders). The tables highlight the implementation of the STROBE-MR
141 guidelines throughout the manuscript.

142

143 **Objective 1: Bi-directional two-sample MR analysis of chronotype and neuropsychiatric** 144 **disorders**

145 To investigate causal relationships between neuropsychiatric disorders and chronotype, we
146 performed a bi-directional two-sample MR analysis using genetic variants for each trait from
147 GWAS data. We obtained summary statistics from the Psychiatric Genomics Consortium (PGC)
148 for six neuropsychiatric disorders (ADHD, ASD, BD, MDD, Insomnia and SZ) (3, 7, 13, 14, 15,
149 16) and from the UK Biobank for chronotype (4). Chronotype was selected due to it being the
150 sleep-related phenotype that has been subjected to the largest GWAS in terms of sample size

151 and statistical power to detect associations of small effect. A description of the GWAS data used
152 for neuropsychiatric disorders and chronotype is available in [Supplementary Table 3](#).

153

154 To maximise power, we used the largest GWAS available for each phenotype. For each
155 neuropsychiatric disorder, the individuals were classified as cases and controls based on the
156 reported diagnoses in each GWAS. To prevent bias due to variation in the underlying sample
157 population, all individuals included in these GWAS were of European ancestry. For SZ, the
158 PGC had performed a multi-ancestry integration analysis (80% European + 20% East Asian;
159 14) so we obtained summary statistics for an entirely European ancestry sample. To avoid
160 sample overlap, GWAS summary statistics that excluded UK Biobank samples were used, when
161 available. Data for 403,195 participants was available from the UK Biobank for the morning
162 chronotype. The measurement of chronotype refers to self-reported “morning person” as
163 identified through the UK Biobank (n=449,734). A case for the morning person chronotype is a
164 participant who, for the question “*Do you consider yourself to be:*”, answered “*Definitely a*
165 *morning person*” or “*More a morning than an evening person*” whereas a control is a participant
166 who answered with “*Definitely an ‘evening’ person*” and “*More an ‘evening’ than a ‘morning’*
167 *person*” in the UK Biobank data (4). All included studies reported a SNP as GWS if it reached
168 the significance threshold ($p < 5 \times 10^{-8}$) and each study performed LD clumping on results to
169 identify independent GWS loci ($r^2 < 0.1$). The range of clumping distance between SNPs in each
170 of the selected GWAS ranged from 250 - 3,000 kb ([Supplementary Table 3](#)).

171

172 During MR analysis we used genetic variants as a proxy for a trait and therefore it is important
173 to ensure that the selected IVs are high quality and can accurately predict causality. There are
174 three core IV assumptions that generally must hold in order for the MR study to be valid: 1) IVs
175 are robustly associated with the risk factor; the relevance assumption. 2) IVs are not associated
176 with any confounders; the independence assumption. 3) IVs have no association with the

177 outcome that is not mediated through the risk factor; the exclusion restriction assumption (17).

178 We address the relevance assumption by only using genetic instruments that were identified as

179 GWS loci for each phenotype, providing evidence of a strong association with the phenotype.

180

181

182 We address the independence and exclusion restriction assumptions by using several MR

183 methods to estimate causal effect and correct for bias due to horizontal pleiotropy. Inverse-

184 variance weighted (IVW) meta-analysis was selected as the primary analysis for causal

185 estimate due to its ability to provide maximum power possible. This method combines effect

186 estimates for all genetic instruments to provide the greatest valid causal estimates, under the

187 assumption of balanced pleiotropy (17). IVW MR was implemented using the `mr_ivw` function

188 from the TwoSampleMR R package on the default settings (18). By default, the IVW random-

189 effects model is performed, allowing overdispersion in the weighted linear regression (the

190 residual standard error is not fixed to be one, but is not allowed to take values below one). We

191 also selected that a minimum of four IVs were required to ensure a robust causal estimate was

192 being produced in the MR model. We utilised the MR-PRESSO test to identify and remove

193 outliers via a simulation approach that uses observed and expected distributions of tested

194 variants to detect horizontal pleiotropy (9).

195

196 We additionally used the MR-PRESSO global test, which detects bias among all IVs by

197 comparing the observed distance of all variants to the regression line, to detect horizontal

198 pleiotropy and the MR-PRESSO distortion test to test for significant distortion before correction

199 (9). These functions were implemented using the `mr_presso` function from the R package

200 MRPRESSO. We also implemented a Bonferroni significance threshold to correct for multiple-

201 testing (i.e., $P < 0.05/12$ tests for bidirectional analysis of 6 phenotypes).

202

203 Causal estimates were also made using MR-Egger regression (19), which corrects for average
204 pleiotropic effects, and median-based estimate (20), which assumes >50% of instruments are
205 valid. The effect estimates from these methods were compared to results from IVW. The MR-
206 Egger intercept test was also used to estimate bias caused by horizontal pleiotropy (19).
207 Heterogeneity was also measured using Cochran's Q statistic (21). The additional MR methods
208 were also implemented using the TwoSampleMR R package on the default settings. A number
209 of plots were also generated to evaluate the degree of causal effects and identify bias. Forest
210 plots were generated to visualise and compare causal odds ratio estimates and confidence
211 intervals for each exposure and outcome pair identified. Scatter plots were also generated
212 which plots the SNP-outcome association against the SNP-exposure association to visualise the
213 causal estimate obtained from the MR analysis (22).

214
215 We extended the analysis to examine multiple exposures concurrently to further evaluate the
216 degree of bias that may be introduced in causal estimates due to genetically similar phenotypes.
217 We performed a multi-trait MR, which is implemented to correct when IVs for exposure 1 (E_1)
218 also have a significant effect on additional exposures ($E_2 \rightarrow E_n$). The IVs for E_1 are selected and
219 the effect estimates are extracted for these IVs from E_n and integrated into the MR model. Due
220 to prior knowledge of the significant genetic similarities between the psychiatric disorders (e.g.
221 BD, MDD and SZ) (23), we employed multi-trait MR to investigate the effect of bias due to
222 genetic similarities on each psychiatric disorder. We assessed the role of psychiatric disorders
223 (SZ, BD and MDD) on chronotype by performing three multi-trait MR analyses, to assess each
224 psychiatric disorder assigned as E_1 and extract the corresponding IVs to test the effect on
225 chronotype, i.e., MR analysis to investigate the effect of schizophrenia (E_1 =SZ, E_2 =BD and
226 E_3 =MDD) on chronotype. We did not perform multi-trait MR for ADHD and ASD due to the low
227 number of instrumental variants available for analyses. This was also implemented using the
228 MR-PRESSO R package (9). We also utilised results from genetic correlation studies,

229 generated using GWASatlas, to assess the direction of effect and to compare to results from
230 MR (24).

231
232 We performed the MR analysis using the R version 4.0.2 (The R Foundation of Statistical
233 Computing). The software used to perform this MR analysis was the R packages
234 TwoSampleMR (<https://github.com/MRCIEU/TwoSampleMR>) and MR-PRESSO
235 (<https://github.com/rondolab/MR-PRESSO>) and all plots were generated using the R packages
236 ggplot2 (<https://ggplot2.tidyverse.org/>) and TwoSampleMR.

237
238 **Objective 2: MR analysis to assess the role of SNPs associated with changes in gene**
239 **expression as risk factors for neuropsychiatric disorders and chronotype**

240
241 This analysis uses MR to identify gene expression alterations that contribute to chronotype
242 and/or neuropsychiatric disorders. This analysis was unidirectional and investigated the effect of
243 gene expression (exposure) on neuropsychiatric disorders and chronotype (outcome) by
244 integrating eQTL data with GWAS data within a MR framework to investigate the genetic basis
245 of both neuropsychiatric disorders and chronotype, including overlap between them. Each
246 phenotype was investigated separately with the aim of contributing to current knowledge on the
247 genetic basis of each phenotype, validating previous findings from GWAS and other genomic
248 analysis methods, and/or finding previously unidentified variants or genes that link
249 neuropsychiatric disorders and chronotype.

250
251 To strengthen the evidence of a causal relationship, we followed up the MR analysis by
252 performing colocalization on the top findings. MR and colocalization can be used together to
253 validate that the variant in a genomic region has been identified as causal for both the exposure
254 and the outcome through MR. In this analysis, MR assessed the association of an exposure

255 (eQTLs) with an outcome (neuropsychiatric disorders and/or chronotype). Evidence of an
256 association indicated that the eQTLs were causal for gene expression alterations that contribute
257 to the outcome phenotype. Colocalization was then performed where strong evidence for an
258 association between an exposure and outcome is found through MR and assessed whether
259 each is caused by the same or distinct variants (10). This analysis was motivated by the
260 approach taken by Baird et al. (2021) to perform two-sample MR using eQTLs as instruments to
261 predict effects on neuro-phenotypes (11)

262
263 We used eQTL summary statistics from blood and the brain. We selected brain regions based
264 on their relevance in the context of neuropsychiatric disorders and sleep phenotypes such as a
265 overlapping relevance to both phenotypes ([Supplementary Table 4](#)). Prefrontal cortex data from
266 PsychENCODE data was included as the largest dataset of brain eQTLs available (n=1387),
267 while GTEx whole blood was included as the largest dataset of eQTLs from GTEx (n=670) and
268 as a proxy for brain tissue. The specific brain regions that were selected were based on their
269 relevance to neuropsychiatric disorders, circadian rhythm or both and these were cortex
270 (n=205), hippocampus (n=165) and hypothalamus (n=170).

271
272 For each of the selected tissues, we obtained gene expression data from cis-eQTL summary
273 statistics provided by the Genotype-Tissue Expression (GTEx) project version 8
274 (<https://gtexportal.org/>) (25) and the PsychENCODE consortium
275 (<https://psychencode.synapse.org/>) (26). The number of samples per tissue is outlined in
276 [Supplementary Table 4](#) and ranged from 165 samples (GTEx, hippocampus) to 1,387 samples
277 (PsychENCODE, prefrontal cortex). Information on the measurement, QC and selection of
278 genetic variants is available in the respective studies.

279

280 Study participants were primarily of European ancestry. eQTL summary statistics from
281 PsychENCODE were generated using data from samples of European ancestry. eQTL
282 summary statistics from GTEx consisted of 84.6% white, 12.9% African American and 1.3%
283 Asian participants.

284
285 Similar to the first analysis, we used the beta coefficient to report the strength of the effect of the
286 exposure (gene expression from eQTL summary statistics) on each of the seven outcomes (six
287 neuropsychiatric disorders and chronotype) individually. The IVs for gene expression were
288 selected by using a statistical significance threshold of $p < 5 \times 10^{-8}$ and LD clumping was
289 performed by the `clump_data` function from the TwoSampleMR R package on the default
290 settings, to obtain a set of independent eQTL instruments. SNPs were also filtered to include
291 only those available in the 1000 Genomes EUR population with $r^2 > 0.001$ and all SNPs within
292 clumping distance of 10,000kb window of the top hit were removed. This resulted in a total of
293 4,374 unique SNPs and 6,315 genes to study using MR analysis ([Supplementary Table 4](#)). As
294 in our first analysis, we implemented the MR analyses using the TwoSampleMR R package,
295 using the `mr_wald_ratio` function.

296
297 The causal estimate was obtained using the single instrument Wald ratio, that divides the gene-
298 outcome association by the gene-exposure association (27). Similarly to the analysis performed
299 using the SMR package, developed by [Zhu et al. \(2016\)](#), we apply MR to assess gene
300 expression on complex traits and exploit the Wald ratio in conjunction with a colocalization
301 method (28). Colocalization analysis was performed to support evidence from MR where a
302 statistically significant causal effect was found between an eQTL and a neuropsychiatric
303 disorder and/or chronotype. Colocalization analysis validates that the same eQTLs are causal
304 for changes in gene expression and the neuropsychiatric disorder and/or chronotype. A non-
305 zero result from colocalization analysis indicates that the same variants are causal in both

306 GWASs and eQTL studies, due to either causality or pleiotropy. We performed colocalization
307 using the coloc.abf function from the coloc R package (29). This function calculates posterior
308 probabilities (PP) using Bayes factors to assess the association of a SNP with two traits and
309 calculates a PP for four hypotheses, of which hypothesis 4 (PP4) > 0.7 is considered evidence
310 that a common causal variant is found between the two traits. We also undertook to validate the
311 IV assumptions by only using eQTL instruments found to have a strong effect on the exposure,
312 based on the statistical significance threshold of P-value < 5×10^{-8} .

313

314 We calculated a beta effect size, standard error and p-value from each Wald test to test the null
315 hypothesis that gene expression alterations were not correlated with risk of neuropsychiatric
316 disorders and/or chronotype. The test for causal effect from MR analysis showed a statistically
317 significant association if the statistical result passed the Bonferroni correction threshold of $p <$
318 $0.05/7$ (correcting for testing of six neuropsychiatric disorders plus chronotype).

319

320

321 Results

322 **Bi-directional two-sample MR analysis of chronotype and neuropsychiatric** 323 **disorders**

324

325 **Causal effects of chronotype on neuropsychiatric disorders**

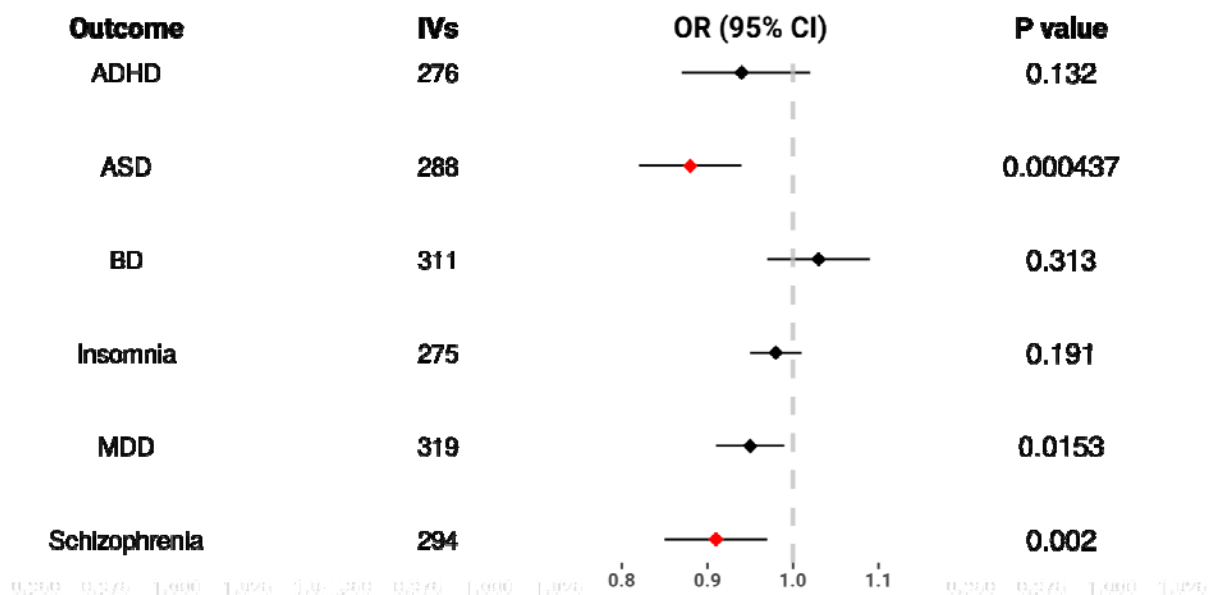
326 Our two-sample MR analysis demonstrated that the morning chronotype is causal for lower risk
327 of two neuropsychiatric disorders (**Figure 1**). This includes an association between morning
328 chronotype and reduced risk for ASD (OR = 0.88, CI = 0.82-0.94, IVW P = 4.37×10^{-4}) and
329 reduced risk for schizophrenia (OR = 0.91, CI = 0.95-0.97, IVW P = 2.19×10^{-3}). We also
330 detected an association between morning chronotype and reduced risk for MDD (OR = 0.95, CI
331 = 0.91-0.99, IVW P = 1.53×10^{-2}), however the estimate was not statistically significant after
332 correcting for multiple tests ([Supplementary Table 5](#)).

333

334 To investigate the accuracy of the MR IVW method for causal effect estimates, a series of
335 additional MR analyses were performed. We calculated causal effect estimates using MR-
336 PRESSO, MR Egger and the median-based MR estimates and by comparing across methods,
337 we found similar beta effect sizes albeit with wider confidence intervals ([Supplementary Table](#)
338 [5](#)). **Figure 2** shows that there is consistency across numerous MR methods in terms of effect
339 size and direction for the two statistically significant results, ASD (**Figure 2a**) and SZ (**Figure**
340 **2b**). We also performed IV outlier removal by using the MR-PRESSO outlier test which
341 determines which IVs may be confounding results by a simulation approach. The results
342 indicated that 27 outliers for SZ and no outliers for ASD were observed and subsequently these
343 were removed from the MR analysis, resulting in stronger associations identified between the
344 significant exposure-outcome pairs.

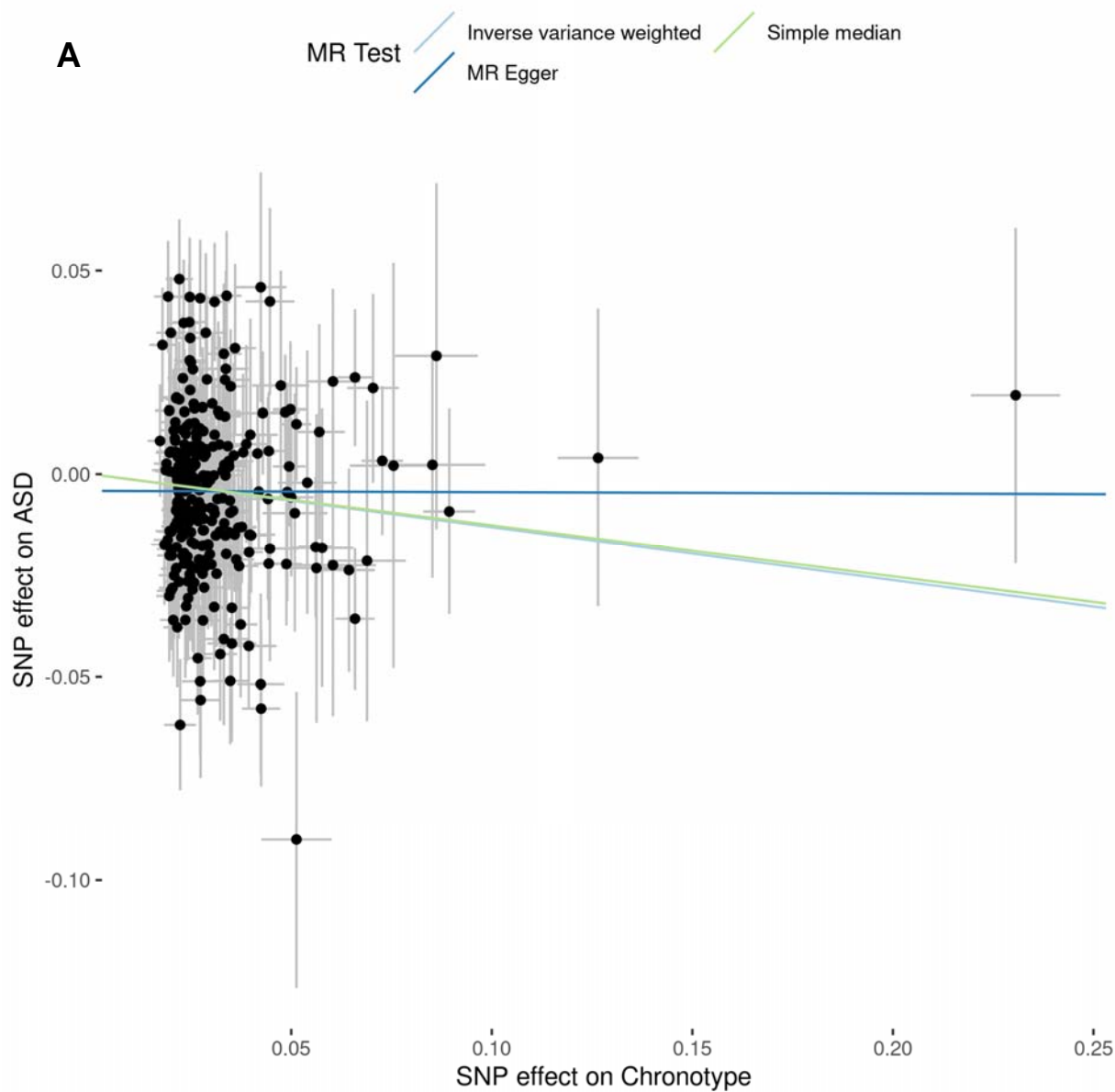
345

346
347
348

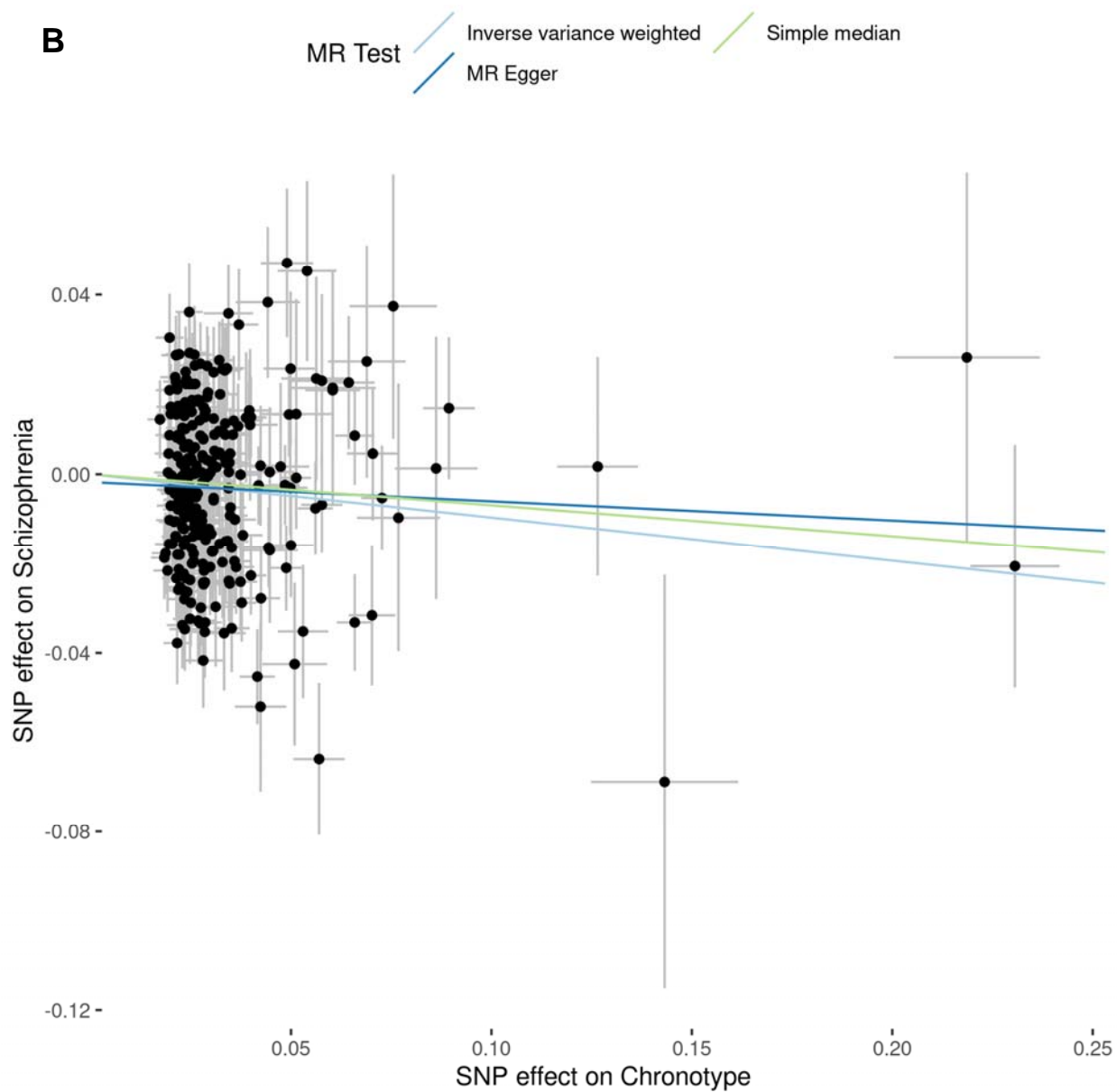


349
350
351
352
353
354
355
356
357
358
359
360
361
362

Figure 1. MR forest plot of chronotype (exposure) vs. neuropsychiatric disorder (outcomes). Plot showing MR IVW meta-analysis effect estimates (OR). OR above 1 indicate a tendency towards the morning chronotype and OR below 1 indicate a tendency towards the evening chronotype. Each line represents CI and red dots identify associations that reach the Bonferroni-corrected significance threshold. ADHD, attention-deficit hyperactivity disorder; ASD, autism spectrum disorder; BD, bipolar disorder; CI, confidence intervals; IVs, instrumental variants (#GWS SNPs for the exposure (chronotype)); MDD, major depressive disorder.



363
364



365
366 **Figure 2. MR scatter plot of chronotype (exposure) vs neuropsychiatric disorders risk (outcome).** This plot
367 shows the effect size comparison (beta) for each instrumental variant used in the MR analysis. The x-axis indicates
368 effect estimate for each SNP on morning chronotype while the y-axis indicates the effect estimate for the SNP on
369 ASD (**Figure 2A**) and SZ (**Figure 2B**). Error bars at each point indicate the standard error for each IV in a single-
370 variant MR analysis. The slopes from each coloured line represents the results from meta-analysis across multiple
371 MR methods performed and the slope represents the degree of association.

372

373

374

375

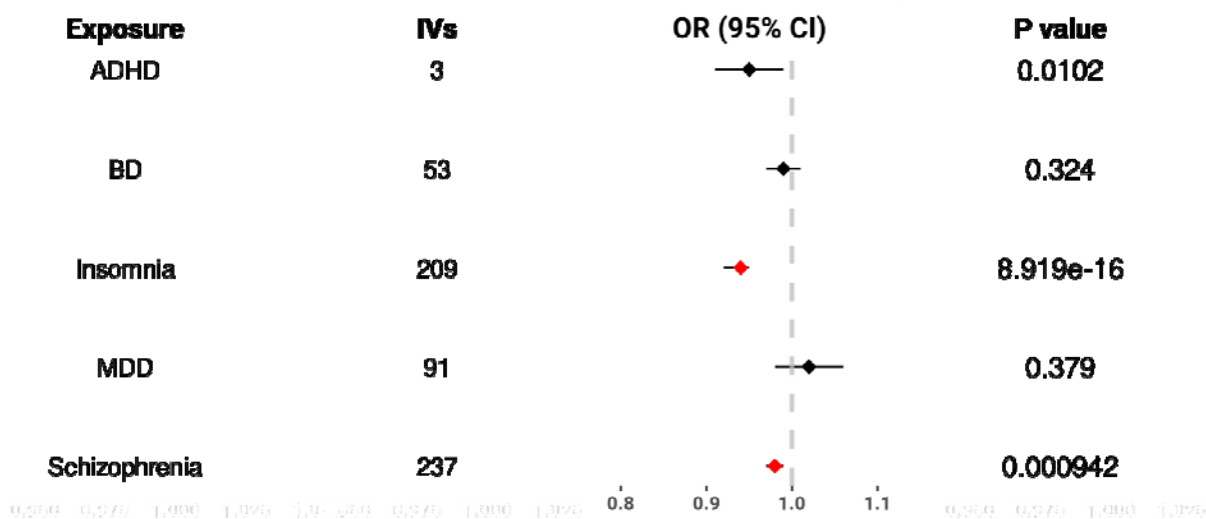
376

377

Causal effects of neuropsychiatric disorders on chronotype

378 Our results of two-sample MR analysis demonstrated a greater genetic risk for insomnia (OR =
 379 0.95, CI = 0.92-0.95 and IVW P = 8.92×10^{-6}) and SZ (OR = 0.88, CI = 0.82-0.94, IVW P = 5×10^{-4})
 380 ⁴) is causal for tendency towards the evening chronotype (**Figure 3**). We calculated causal
 381 effect estimates using MR-PRESSO, MR Egger and the median-based estimate and by
 382 comparing across methods. We found similar beta effect sizes albeit with wider confidence
 383 intervals ([Supplementary Table 5](#)). **Figure 4** shows that there is consistency across the various
 384 MR methods performed for effect size and direction for the two statistically significant results,
 385 insomnia (**Figure 4a**) and SZ (**Figure 4b**). We also performed IV outlier removal by using the
 386 MR-PRESSO outlier test. The results indicated that 24 outliers for insomnia and 14 outliers for
 387 SZ were observed and subsequently these were removed from the MR analysis
 388 ([Supplementary Table 5](#)), resulting in stronger associations identified between the significant
 389 exposure-outcome pairs.

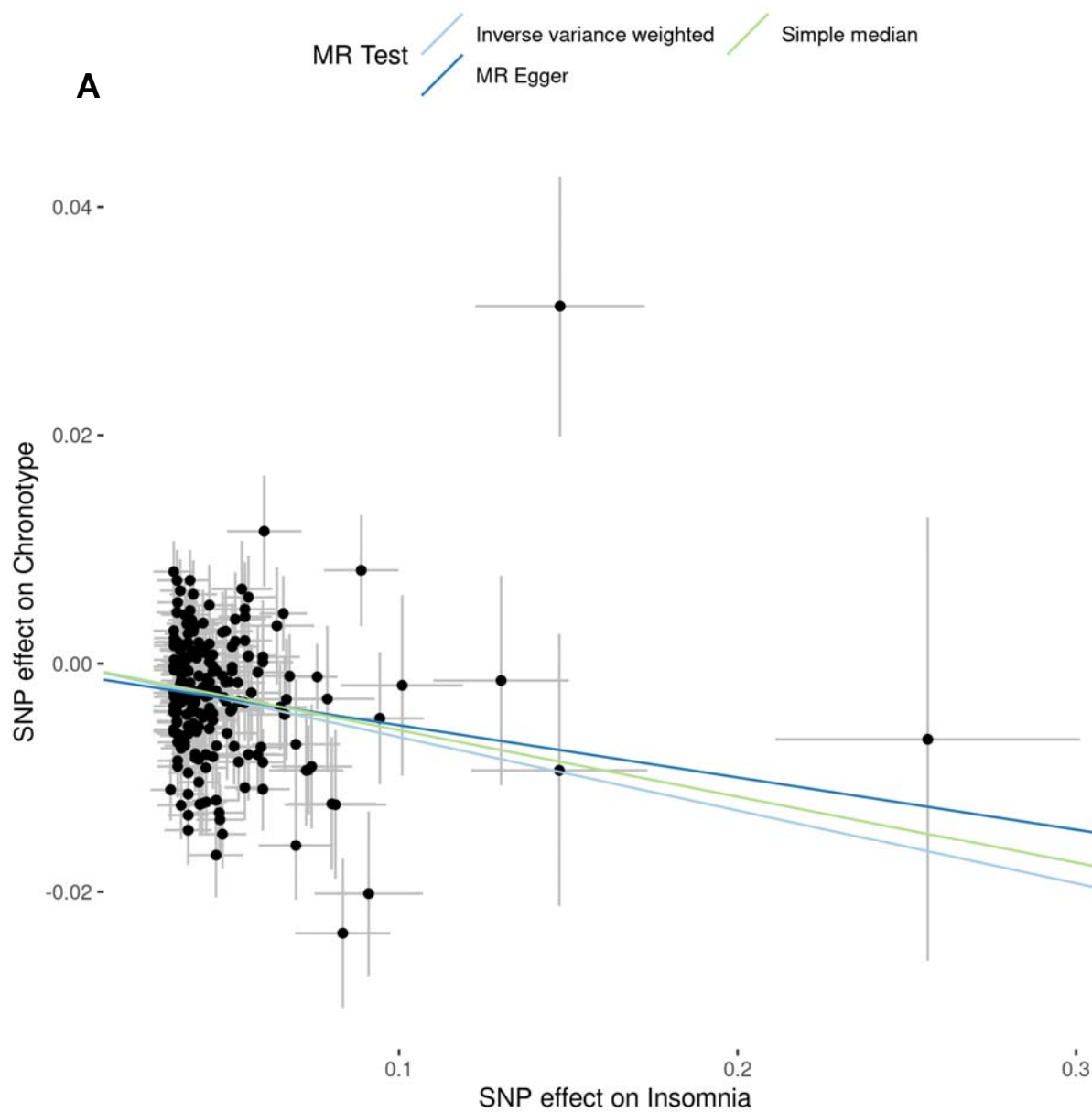
390
 391
 392



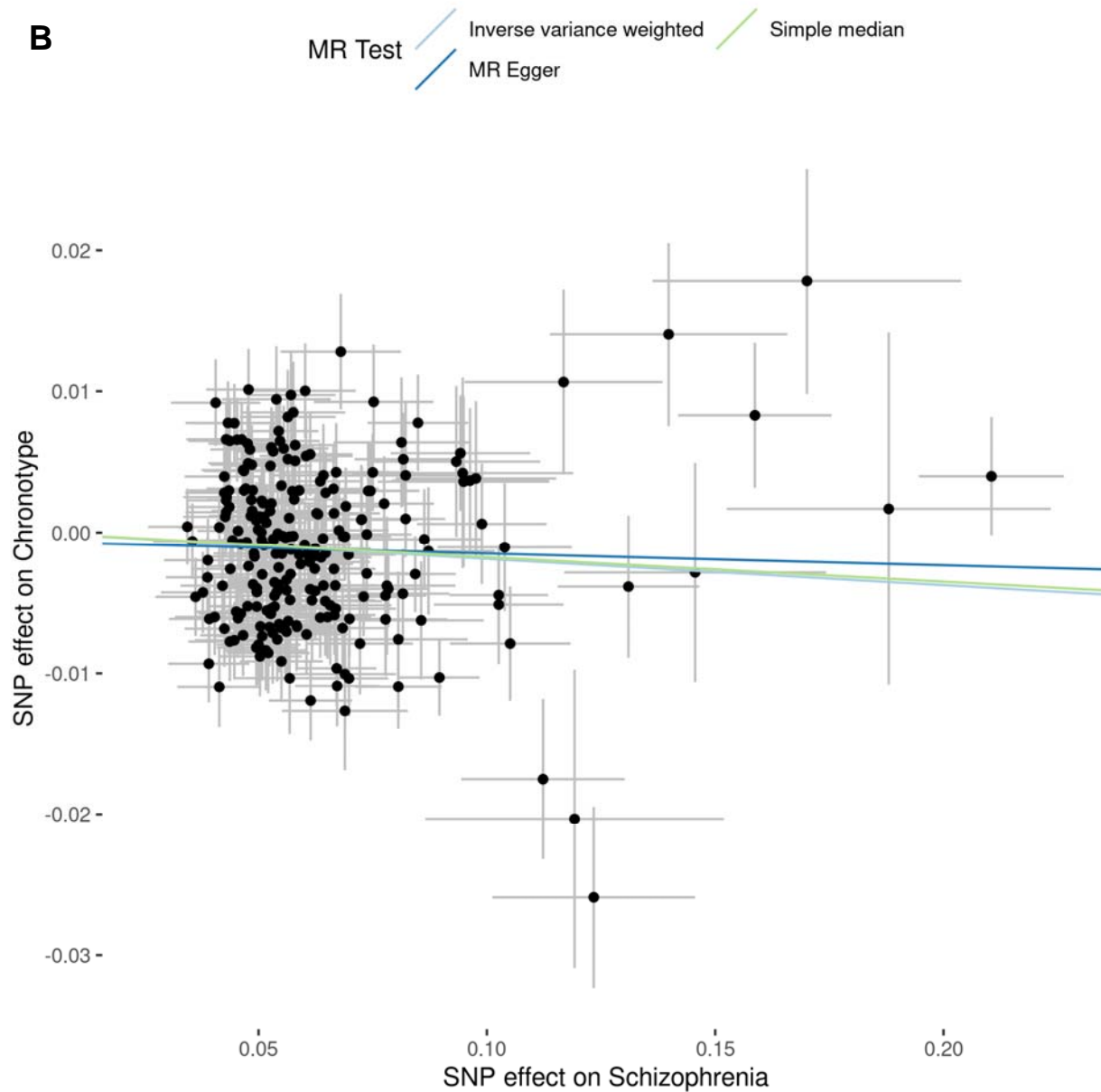
393
 394 **Figure 3.** MR forest plot of neuropsychiatric disorder (exposure) vs. chronotype (outcome). Plot showing MR IVW
 395 meta-analysis effect estimates (OR). OR above 1 indicate a tendency towards the morning chronotype and OR
 396 below OR indicate a tendency towards the evening chronotype. Each line represents CI and red point colours identify
 397 associations that reach the Bonferroni-corrected significance threshold. ADHD, attention-deficit hyperactivity disorder;
 398 BD, bipolar disorder; CI, confidence intervals; IVs, instrumental variants (#GWS SNPs for the exposures (five
 399 neuropsychiatric disorders)); MDD, major depressive disorder.

400
 401

402
403
404



405
406
407



408
409 **Figure 4. MR scatter plot of neuropsychiatric disorders risk (exposure) vs chronotype (outcome).** This plot
410 shows the effect size comparison (beta) for each instrumental variant used in the MR analysis. The x-axis indicates
411 the effect estimate for each SNP on insomnia (**Figure 4a**) and SZ (**Figure 4b**) while the y-axis indicates the effect
412 estimate for the SNP on the morning chronotype. Error bars at each point indicate the standard error for each IV in a
413 single-variant MR analysis. The slopes from each coloured line represents the results from meta-analysis across
414 multiple MR methods performed and the slope represents the degree of association.
415

416
417 A similar pattern of results was observed for a number of sensitivity tests in either direction of
418 MR analysis. Cochran's Q statistic found evidence for SNP effect sizes heterogeneity however
419 we showed through consistency in the causal effect and direction, as predicted in sensitivity

420 tests, it is unlikely to introduce bias from horizontal pleiotropy. As we are using MR for complex
421 traits, which consist of many SNPs with very small effect sizes across numerous genes and
422 biological functions, we expect that many of the SNPs used as IVs will have wide variability in
423 their estimated effect size. We also found no significant results from the MR Egger intercept test
424 ($p > 0.05$), suggesting that no bias due to horizontal pleiotropy was observed. This is also
425 supported by the individual SNP tests (leave-one-out analyses), where no individual SNP-
426 exposure association was found to dominate the estimate of the causal effect (30). Full details
427 on the sensitivity tests of the bidirectional MR analyses are available in [Supplementary Table 5](#).

428
429 The results from multi-trait MR also show good support for these findings. We assessed the
430 causal effect of psychiatric disorders (BD, MDD and SZ) on chronotype using three MR analysis
431 designs and found that the predicted effect sizes and standard errors correlated with those
432 generated in the uni-trait MR analyses. Statistical significance also remained for the effect of SZ
433 on chronotype and a number of outlier IVs were no longer removed, due to accounting for the
434 bias introduced from BD and MDD ([Supplementary Table 6](#)).

435
436 We also compared the results of MR analysis with results from genetic correlation, generated
437 using GWASatlas. We verified that similar results were obtained using genetic correlations and
438 showed that the direction of effect is in line with our results, indicating that chronotype is
439 negatively correlated with risk of all the neuropsychiatric disorders that we investigated using
440 MR. A similar pattern was found where a significant genetic correlation was found between
441 chronotype and ASD, MDD and SZ ([Supplementary Figure 1](#)).

442
443 Finally, in order to assess the effect of heterogeneity due to sample population variation, we
444 calculated causal effects between chronotype and a mixed ancestry SZ sample (20% East

445 Asian + 80% European) and demonstrated that similar effect estimates were obtained by
446 comparing the results from the European ancestry study ([Supplementary Table 4](#)).

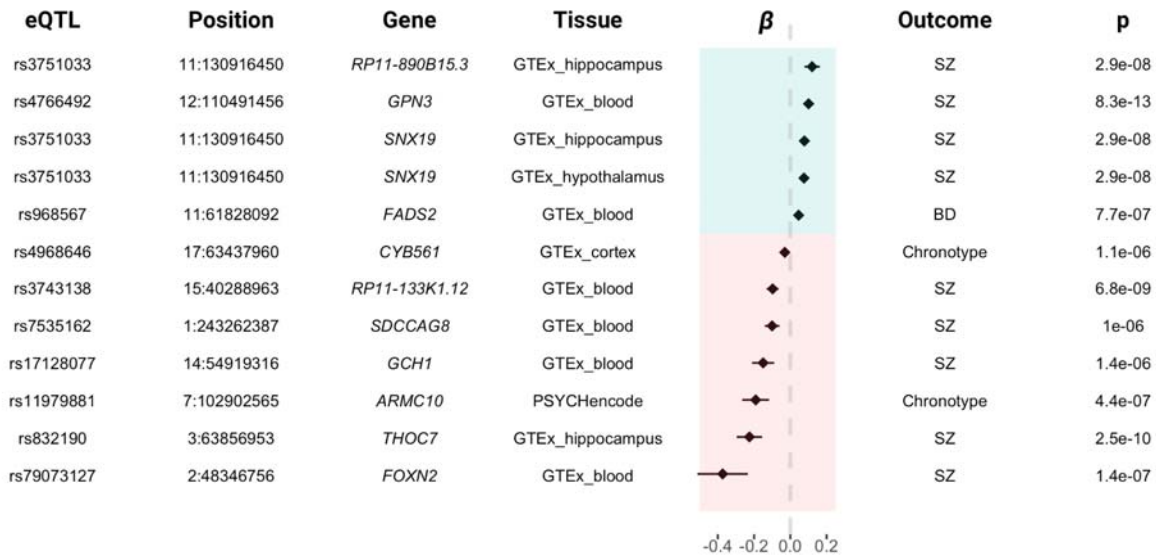
447
448
449 **MR analysis to assess the role of SNPs associated with changes in gene**
450 **expression as risk factors for neuropsychiatric disorders and chronotype**

451 We analysed the effect of changes in gene expression on outcomes by performing two-sample
452 MR using beta effect estimates for IVs for gene expression from eQTL summary statistics and
453 extracting beta effect sizes for neuropsychiatric disorders and chronotype from GWAS data
454 ([Supplementary Table 7](#)). We used a Wald ratio to estimate causal effects of 36,530 eQTL-gene
455 pairs, based on the number of unique eQTL-gene pairs passing LD clumping that had a
456 statistically significant association in blood or brain tissue. Bonferroni correction was performed
457 by tissue specific thresholds (outlined in [Supplementary Table 8](#)) that were used to determine
458 the significance of the causal effects found through MR and revealed 175 significant causal
459 effects where an outcome was mediated through gene expression alterations. These results
460 were from 66 unique eQTLs across 161 unique genes ([Supplementary Table 7](#)).

461
462 We found a significant impact of gene expression alterations, mediated through eQTLs, in
463 numerous genes for all of the outcomes that we analysed (ASD: 10 genes, ADHD: 2, BD: 34,
464 Insomnia: 2, MDD: 2, SZ: 105 and chronotype: 20, [Supplementary Table 8](#)). We then used
465 colocalization, an established method used to provide complementary evidence to predict
466 causal relationships between gene expression and complex traits, and found that strong
467 evidence for a causal effect remained for twelve of these associations, with $PP4 > 0.7$
468 ([Supplementary Table 7](#)). **Figure 5** shows these twelve eQTLs with a significant causal role in
469 neuropsychiatric disorders or chronotype. [Supplementary Table 7](#) includes the effect estimates (β)

470 and statistical significance (P) measured for each instrumental variant in the original eQTL (β_{exp} and
 471 P_{exp}) and GWAS (β_{out} and P_{out}).

472
 473
 474



475
 476
 477
 478
 479
 480
 481
 482
 483
 484
 485
 486

Figure 5. Forest plot for significant associations found from MR analysis and colocalization of the causal effect of gene expression on chronotype or neuropsychiatric disorders. For each eQTL SNP, the beta (β) represents the effect size of gene expression alterations in the respective gene for the corresponding outcome and tissue. The point and lines at each row represent the strength of effect and confidence intervals for each comparison. The vertical dashed line represents beta = 0. Results with beta shaded in blue indicate that increased gene expression is associated with the increased risk for neuropsychiatric disorders or increased tendency for the morning chronotype. Results with beta shaded in red indicate that decreased gene expression is associated with increased risk for the phenotype. The p-value indicates the strength of the effect on the outcome and the tissue column indicates the source of the eQTL. Each result passed the MR test for causal effect estimate and colocalization for the same causal variant.

487 Six of twelve associations were blood-mediated and nine of twelve associations were for SZ. It
 488 is notable that for the rs3751033 eQTL, we demonstrated a pleiotropic effect on *RP11-890B15*
 489 in the hippocampus and on *SNX19* in the hippocampus and hypothalamus (**Figure 5**).

490

491 As we were interested in finding supporting evidence for the causal effects of the twelve eQTLs,
 492 we investigated if the associated eQTLs or genes have been previously linked to
 493 neuropsychiatric disorders and/or chronotype. *CYB561* was not previously implicated in
 494 chronotype. The result for rs4968646 and chronotype indicates that the causal effect at this

495 locus can be attributed to altered expression of *CYB561* and not the *TANC2* gene, which has
496 previously been reported to contain a SNP (rs17682747) that is in high LD with rs4968646 and
497 associated with chronotype (31). MR analysis provided further evidence for the association of
498 *RP111-890B15*, *GPN3* and *SNX19* with SZ, and *FADS2* with BD. For rs4968646, rs17128077
499 and rs79073127, no published evidence was found for the association of an eQTL/gene with the
500 phenotype however results from PheWAS analysis, accessed through Open Targets Genetics,
501 show evidence of an association between numerous eQTLs and phenotypes (Supplementary
502 Table 9). Other eQTLs (rs3751033, rs4766492, rs832190, rs79073127) were previously
503 reported in the literature and MR provides further validation of these associations here.

504
505 The tool LDlink proved useful for investigating the phenotypes that were linked to a SNP by
506 proxy through a SNP in high LD. In most cases, the eQTL that was identified as causal through
507 MR analysis, for a given phenotype, was in high LD with a SNP that was previously linked to
508 that phenotype. For one eQTL (rs11979881 in *ARMC10* which was linked to chronotype through
509 MR), neither the SNP or any SNP in high LD was previously linked to chronotype, indicating that
510 we may have identified new evidence for the link between the eQTL rs11989881 and gene
511 *ARMC10*. MR analysis also validates previously known links between sleep phenotypes and
512 neuropsychiatric disorders (*FOXP2*, *GCH1*, *CYB561*). More details on each of the findings and
513 a conclusion on the importance of each eQTL can be found in the [Supplementary Table 9](#).

514
515

516 Discussion

517 We identified a causal effect of chronotype on risk for SZ and ASD, indicating that an individual
518 with the morning chronotype is at lower risk of developing either disorder. [Jones et al. \(2019\)](#)
519 and Sun et al. (2019) did previously report a causal effect of chronotype on SZ but that was
520 using a smaller sized SZ GWAS dataset (4, 32). Our finding of a causal effect of chronotype on
521 ASD has not been previously reported through MR but the direction of effect is consistent with
522 previous findings using measures of genetic correlation (14). In the opposite direction, we found
523 that insomnia and SZ both have a causal effect on chronotype, i.e., a genetic predisposition to
524 insomnia or SZ is causal for tendency towards the evening chronotype. The causal effect of
525 insomnia on chronotype is consistent with observations in individuals with insomnia i.e. those
526 with insomnia will typically wake and sleep later. These findings align widely with findings from
527 other studies on the relationship between chronotype and neuropsychiatric disorders, whereby
528 the evening chronotype is linked to increased risk and the morning chronotype is linked to lower
529 risk for neuropsychiatric disorders (6, 7, 33). We built upon the analyses performed in previous
530 studies by including the MR-PRESSO method, which allowed a new approach to identify and
531 correct for outliers contributing to horizontal pleiotropy. In addition, we employed the MR-
532 STROBE method to deliver a clear and transparent MR analysis.

533
534 The validity of these results was tested through a number of sensitivity tests, to assess that the
535 fundamental assumptions of MR were met: 1) Relevance assumption: The instrumental
536 variables were selected based on p-value, as reported in the respective GWAS; 2)
537 Independence assumption and 3) Exclusion restriction: The causal effect estimates were also
538 created using MR-Egger, weighted median and mode-based methods (19, 20). The effect
539 estimates yielded were similar to those in the IVW method. The MR-Egger intercept was also
540 used and found no evidence that results deviated from 0, indicating little evidence for directional

541 genetic pleiotropy. Additionally, the multi-trait MR was used to account for confounding that may
542 exist due to other existing neuropsychiatric disorders (BD and MDD), with overlapping features.
543 These sensitivity tests gave sufficient evidence that MR analysis would produce reliable
544 estimates for causal effects.

545
546 The bidirectional relationship between SZ and chronotype can be interpreted as the morning
547 chronotype has a protective effect against SZ and, in the opposite direction, SZ can be a
548 contributing factor in someone having the evening chronotype. This bidirectional causal
549 relationship we identified between SZ and chronotype indicates that the evening chronotype can
550 be both a cause and effect of the SZ. This suggests that there may be a type of positive
551 feedback occurring whereby the disruption to sleep can initiate onset of SZ or perhaps make
552 symptoms worse. An individual with SZ may also then experience further sleep disruptions
553 which may lead to further disadvantageous symptoms of the disorder. The bidirectional
554 relationship may be due to the heterogenous and polygenic nature of SZ and sleep-based
555 phenotypes. Improved definition of sleep phenotypes and endophenotypes of SZ, and a better
556 understanding of their genetic basis, are required to further assess the complex relationship
557 between sleep and SZ.

558
559 Our second analysis was a unidirectional MR using eQTL and GWAS data, and was
560 combined with colocalization to investigate the causal effects for alterations in gene expression
561 on chronotype and six neuropsychiatric disorders. We found twelve instances where a unique
562 eQTL-gene association was causal for either chronotype, BD or SZ. In some cases, these data
563 support previously reported findings that have been identified through GWAS and PheWAS
564 analyses such as the association of *SNX19* with SZ, which has been reported in multiple studies
565 (Supplementary Table 9). In other cases, our data provides new evidence for the effect of SNP-
566 mediated gene expression on risk of chronotype and neuropsychiatric disorders. The genes that

567 have been identified may potentially inform on the biological mechanisms that could drive the
568 genetic component of these phenotypes, e.g. intracellular vesicle trafficking is mediated by
569 *SNX19* (34), and subsequently this process may be linked to SZ risk. Here we have used the
570 MR framework to understand in part how gene expression alterations influence neuropsychiatric
571 disorders and chronotype.

572
573 There are a number of strengths and weaknesses for each analysis. A major strength of the
574 study is the application of the MR-STROBE method, which provided valuable guidance on the
575 necessary information and additional analyses required to ensure robust analysis. For the first
576 study, the framework was useful for planning, selecting the sensitivity tests and selecting figures
577 and allowed us to perform analyses with reliable results through a proven method. We found
578 that when applied to the second study the MR-STROBE method needed some modifications to
579 be applicable in a multi-omic setting where additional methods such as colocalization are
580 typically integrated into the analysis. Nevertheless, MR-STROBE remained useful for identifying
581 the required study design components and methods to ensure that the second study was
582 robust.

583
584 In our first analysis, we estimated causal effects using multiple sensitivity analyses (MR-
585 PRESSO, MR Egger and median based estimates) to test for horizontal pleiotropy or bias due
586 to potential confounders. We also made efforts to prevent bias due to sample heterogeneity by
587 using only European samples and performing LD pruning to prevent correlation between SNPs
588 used as genetic instruments. We utilised the MR-PRESSO outlier test to identify and remove
589 pleiotropic outliers and ensure robustness of our study design. We also compared the results to
590 those from studies of genetic correlation to validate that the directions of effect were consistent
591 with our findings.

592

593 There are a number of limitations to the first analysis. While we have demonstrated significant
594 evidence for a number of causal relationships, the biological basis of cause and effect remains
595 to be elucidated. This relates to the difficulty in interpreting the results of MR studies when we
596 use MR to study causal relationships of complex traits. When we perform MR using a single
597 instrument with a clearly defined biological mechanism, we can design and guide treatments
598 using this as a target. However due to the nature of complex traits, where we are dealing with
599 many SNPs that have very low effect size, the biological impact of the individual SNPs is low
600 and MR can only be used for epidemiological purposes.

601
602 Another limitation to this analysis is that we perform MR using only European ancestry samples.
603 While two sample MR requires that the same underlying population is used, we believe that the
604 development of multi-ancestry MR methods will be important to fully utilise newer GWAS that
605 are beginning to include samples from numerous ancestry groups. Expansion of GWASs across
606 diverse populations will lead to sample sizes that are large enough to detect SNPs that can be
607 used as strong IVs in MR and identify new biological functions implicated in sleep and
608 neuropsychiatric disorders. Finally, it is important to consider that chronotype is a self-reported
609 measurement that may be biased due to individual subjectivity and differences between
610 individuals in terms of their stage of life and environment (35).

611
612 The second analysis had a number of strengths including integrating functional data from
613 PsychENCODE and GTEx. The integration of eQTL data allows us to determine that the effect
614 of a SNP on the phenotype is mediated through gene expression alterations. The method also
615 indicates the degree of effect size, which can be valuable for prioritising genes. Another strength
616 is that we have extended to integrating colocalization analysis, meaning that we find evidence to
617 support the causal effect found through MR by coupling with evidence for the same causal
618 variant implicated in the phenotype and gene expression. The results of colocalization

619 demonstrated that, while a non-zero result can be obtained from MR, the result can lack
620 evidence for a causal effect.

621
622 Further limitations of this analysis are that we used eQTLs detected in a relatively small number
623 of brain samples and the decision to only include brain subregions that we deemed most
624 relevant to our studied phenotypes. One other limitation found in this case is the lack of
625 developmental stage-specific eQTLs, which may inform on varying effects of SNPs on gene
626 expression levels during various stages of development. The effect sizes are also small and
627 spread across numerous genes, meaning that feasibility for clinical application is limited. Finally,
628 it is surprising that we did not achieve more significant findings from PsychENCODE, which was
629 the largest source of eQTL data that we had available.

630
631 Overall, our MR analysis validated previous findings and provided new evidence for the
632 biological aetiology of our neuropsychiatric disorders, chronotype and their complex
633 relationship. We demonstrated that chronotype and neuropsychiatric disorders have a direct
634 causal effect on each other, and that chronotype and risk for neuropsychiatric disorders (BD and
635 SZ) are influenced by gene expression alterations in the blood and/or specific brain regions
636 (hippocampus, cortex and hypothalamus). We identify a number of genes that are implicated in
637 both chronotype and neuropsychiatric disorders that give important insight into the overlapping
638 biology that is known to exist between neuropsychiatric disorders and sleep phenotypes. Future
639 analyses may focus on diversifying the sources and types of GWAS and multi-omic data to
640 integrate data on additional sleep phenotypes, regulatory function and brain regions that may
641 mediate the links between neuropsychiatric disorders and chronotype. Integration of trans-eQTL
642 data may provide further insights into the genetic basis of these phenotypes. Follow-up studies
643 may also include a complete comparison to results from other methods that integrate
644 expression data which include TWAS and S-PrediXcan. Interventions such as light therapy,

645 which can manipulate an individual's sleep timing (36), are available to influence chronotype.
646 Given our study findings that evening chronotype is causally associated with risk of NPDs, these
647 interventions may be useful to alter sleep timing towards the morning chronotype and reduce
648 risk of NPDs.

649

650

651 **Funding** This research was funded by Science Foundation Ireland (SFI) through the SFI
652 Centre for Research Training in Genomics Data Science under Grant number 18/CRT/6214.

653

654 **Bioinformatics Resources** The sources used in the literature search included GWAScatalog
655 (37, <https://www.ebi.ac.uk/gwas/home>), Open Targets Genetics (38,
656 <https://genetics.opentargets.org>), ClinVar (39, <https://www.ncbi.nlm.nih.gov/clinvar>), SNPedia
657 (40, <https://www.snpedia.com>) and dbSNP (41, <https://www.ncbi.nlm.nih.gov/projects/SNP>).

658

659 **Data and data sharing** We deposited the full scripts for our MR analysis on GitHub
660 (**Objective 1** available at shanecrinion/causal-inference and **Objective 2** available at
661 shanecrinion/mendelian-randomisation-qtI).

662

663 **Conflict of Interest** The authors declare that they have no competing financial interests in
664 relation to the work described here.

665

666

667

668 References

- 669 1. Bray NJ, O'Donovan MC. The genetics of neuropsychiatric disorders. *Brain and*
670 *Neuroscience Advances*. 2018 Jan;2:239821281879927.
- 671
672
- 673 2. Alachkar A, Lee J, Asthana K, Vakil Monfared R, Chen J, Alhassen S, et al. The hidden link
674 between circadian entropy and mental health disorders. *Translational Psychiatry*. 2022 Jul
675 14;12(1).
- 676
677
- 678 3. Jansen PR, Watanabe K, Stringer S, Skene N, Bryois J, Hammerschlag AR, et al. Genome-
679 wide analysis of insomnia in 1,331,010 individuals identifies new risk loci and functional
680 pathways. *Nature Genetics*. 2019 Feb 25;51(3):394–403.
- 681
682
- 683 4. Jones SE, Lane JM, Wood AR, van Hees VT, Tyrrell J, Beaumont RN, et al. Genome-wide
684 association analyses of chronotype in 697,828 individuals provides insights into circadian
685 rhythms. *Nature Communications*. 2019 Jan 29;10(1).
- 686
687
- 688 5. Davey Smith G, Ebrahim S. 'Mendelian randomization': can genetic epidemiology
689 contribute to understanding environmental determinants of disease?*. *International Journal of*
690 *Epidemiology*. 2003 Feb;32(1):1–22.
- 691
692
- 693 6. Carpena MX, Bonilla C, Matijasevich A, Martins-Silva T, Genro JP, Hutz MH, et al. Sleep-
694 related traits and attention-deficit/hyperactivity disorder comorbidity: shared genetic risk factors,
695 molecular mechanisms, and causal effects [Internet]. Cold Spring Harbor Laboratory; 2020 Sep
696 [cited 2023 Feb 11]. Available from: <http://dx.doi.org/10.1101/2020.09.13.20193813>
- 697
698
- 699 7. Mullins N, Forstner AJ, O'Connell KS, Coombes B, Coleman JRI, Qiao Z, et al. Genome-
700 wide association study of more than 40,000 bipolar disorder cases provides new insights into
701 the underlying biology. *Nature Genetics*. 2021 May 17;53(6):817–29.

702

703

704 8.Dashti HS, Jones SE, Wood AR, Lane JM, van Hees VT, Wang H, et al. Genome-wide
705 association study identifies genetic loci for self-reported habitual sleep duration supported by
706 accelerometer-derived estimates. *Nature Communications*. 2019 Mar 7;10(1).

707

708

709 9.Verbanck M, Chen CY, Neale B, Do R. Detection of widespread horizontal pleiotropy in
710 causal relationships inferred from Mendelian randomization between complex traits and
711 diseases. *Nature Genetics*. 2018 Apr 23;50(5):693–8.

712

713

714 10.Zuber V, Grinberg NF, Gill D, Manipur I, Slob EAW, Patel A, et al. Combining evidence
715 from Mendelian randomization and colocalization: Review and comparison of approaches. *The*
716 *American Journal of Human Genetics*. 2022 May;109(5):767–82.

717

718

719 11.Baird DA, Liu JZ, Zheng J, Sieberts SK, Perumal T, Elsworth B, et al. Identifying drug
720 targets for neurological and psychiatric disease via genetics and the brain transcriptome. *PLOS*
721 *Genetics*. 2021 Jan 8;17(1):e1009224.

722

723

724 12.Skrivankova VW, Richmond RC, Woolf BAR, Davies NM, Swanson SA, VanderWeele TJ,
725 et al. Strengthening the reporting of observational studies in epidemiology using mendelian
726 randomisation (STROBE-MR): explanation and elaboration. *BMJ*. 2021 Oct
727 26;375(2233):n2233.

728

729

730 13.Demontis D, Walters RK, Martin J, Mattheisen M, Als TD, Agerbo E, et al. Discovery of the
731 first genome-wide significant risk loci for attention deficit/hyperactivity disorder. *Nature Genetics*.
732 2018 Nov 26;51(1):63–75.

733

734

735 14.Grove J, Ripke S, Als TD, Mattheisen M, Walters RK, Won H, et al. Identification of

736 common genetic risk variants for autism spectrum disorder. *Nature Genetics*. 2019 Feb
737 25;51(3):431–44.

738
739

740 15.Howard DM, Adams MJ, Clarke TK, Hafferty JD, Gibson J, Shirali M, et al. Genome-wide
741 meta-analysis of depression identifies 102 independent variants and highlights the importance
742 of the prefrontal brain regions [Internet]. Cold Spring Harbor Laboratory; 2018 Oct [cited 2023
743 Apr 12]. Available from: <http://dx.doi.org/10.1101/433367>

744
745

746 16.Trubetsky V, Pardiñas AF, Qi T, Panagiotaropoulou G, Awasthi S, Bigdeli TB, et al.
747 Mapping genomic loci implicates genes and synaptic biology in schizophrenia. *Nature*. 2022 Apr
748 8;604(7906):502–8.

749
750

751 17.Burgess S, Butterworth A, Thompson SG. Mendelian Randomization Analysis With
752 Multiple Genetic Variants Using Summarized Data. *Genetic Epidemiology*. 2013 Sep
753 20;37(7):658–65.

754
755

756 18.Hemani G, Zheng J, Elsworth B, Wade KH, Haberland V, Baird D, et al. The MR-Base
757 platform supports systematic causal inference across the human phenome. *eLife*. 2018 May
758 30;7.

759
760

761 19.Bowden J, Davey Smith G, Burgess S. Mendelian randomization with invalid instruments:
762 effect estimation and bias detection through Egger regression. *International Journal of*
763 *Epidemiology*. 2015 Apr 1;44(2):512–25.

764
765

766 20.Bowden J, Davey Smith G, Haycock PC, Burgess S. Consistent Estimation in Mendelian
767 Randomization with Some Invalid Instruments Using a Weighted Median Estimator. *Genetic*
768 *Epidemiology*. 2016 Apr 7;40(4):304–14.

769

770

771 21. Greco M FD, Minelli C, Sheehan NA, Thompson JR. Detecting pleiotropy in Mendelian
772 randomisation studies with summary data and a continuous outcome. *Statistics in Medicine*.
773 2015 May 7;34(21):2926–40.

774

775

776 22. Bowden J, Spiller W, Del Greco M F, Sheehan N, Thompson J, Minelli C, et al. Improving
777 the visualization, interpretation and analysis of two-sample summary data Mendelian
778 randomization via the Radial plot and Radial regression. *International Journal of Epidemiology*.
779 2018 Jun 28;47(4):1264–78.

780

781

782 23. Cardno AG, Owen MJ. Genetic Relationships Between Schizophrenia, Bipolar Disorder,
783 and Schizoaffective Disorder. *Schizophrenia Bulletin*. 2014 Feb 24;40(3):504–15.

784

785

786 24. Watanabe K, Stringer S, Frei O, Umićević Mirkov M, de Leeuw C, Polderman TJC, et al. A
787 global overview of pleiotropy and genetic architecture in complex traits. *Nature Genetics*. 2019
788 Aug 19;51(9):1339–48.

789

790

791 25. Aguet F, Anand S, Ardlie KG, Gabriel S, Getz GA, Graubert A, et al. The GTEx
792 Consortium atlas of genetic regulatory effects across human tissues. *Science*. 2020 Sep
793 11;369(6509):1318–30.

794

795

796 26. Akbarian S, Liu C, Knowles JA, Vaccarino FM, Farnham PJ, Crawford GE, et al. The
797 PsychENCODE project. *Nature Neuroscience*. 2015 Nov 25;18(12):1707–12.

798

799

800 27. Burgess S, Small DS, Thompson SG. A review of instrumental variable estimators for
801 Mendelian randomization. *Statistical Methods in Medical Research*. 2015 Aug 17;26(5):2333–
802 55.

803

804

805 28.Zhu Z, Zhang F, Hu H, Bakshi A, Robinson MR, Powell JE, et al. Integration of summary
806 data from GWAS and eQTL studies predicts complex trait gene targets. *Nature Genetics*. 2016
807 Mar 28;48(5):481–7.

808

809

810 29.Giambartolomei C, Vukcevic D, Schadt EE, Franke L, Hingorani AD, Wallace C, et al.
811 Bayesian Test for Colocalisation between Pairs of Genetic Association Studies Using Summary
812 Statistics. *PLoS Genetics*. 2014 May 15;10(5):e1004383.

813

814

815 30.Burgess S, Davey Smith G, Davies NM, Dudbridge F, Gill D, Glymour MM, et al.
816 Guidelines for performing Mendelian randomization investigations. *Wellcome Open Research*.
817 2020 Apr 28;4:186.

818

819

820 31.Kichaev G, Bhatia G, Loh PR, Gazal S, Burch K, Freund MK, et al. Leveraging Polygenic
821 Functional Enrichment to Improve GWAS Power. *The American Journal of Human Genetics*.
822 2019 Jan;104(1):65–75.

823

824

825 32.Sun X, Liu B, Liu S, Wu DJH, Wang J, Qian Y, et al. Sleep disturbance and psychiatric
826 disorders: a bidirectional Mendelian randomisation study. *Epidemiology and Psychiatric
827 Sciences*. 2022;31.

828

829

830 33.O'Loughlin J, Casanova F, Jones SE, Hagenaars SP, Beaumont RN, Freathy RM, et al.
831 Using Mendelian Randomisation methods to understand whether diurnal preference is causally
832 related to mental health. *Molecular Psychiatry*. 2021 Jun 8;26(11):6305–16.

833

834

835 34.Harashima S ichi, Horiuchi T, Wang Y, Notkins AL, Seino Y, Inagaki N. Sorting nexin 19 regulates the
836 number of dense core vesicles in pancreatic β -cells. *Journal of Diabetes Investigation*. 2011 Jun
837 28;3(1):52–61.

- 838
839
840 35.Gentry NW, Ashbrook LH, Fu YH, Ptáček LJ. Human circadian variations. Journal of
841 Clinical Investigation. 2021 Aug 16;131(16).
842
843
844 36.Canazei M, Bassa D, Jimenez P, Papousek I, Fink A, Weiss E. Effects of an adjunctive,
845 chronotype-based light therapy in hospitalized patients with severe burnout symptoms - a pilot
846 study. Chronobiology International. 2019 May 9;36(7):993–1004.
847
848
849 37.Sollis E, Mosaku A, Abid A, Buniello A, Cerezo M, Gil L, et al. The NHGRI-EBI GWAS
850 Catalog: knowledgebase and deposition resource. Nucleic acids research. 2023 Jan
851 6;51(D1):D977–85.
852
853
854 38.Ghousaini M, Mountjoy E, Carmona M, Peat G, Schmidt EM, Hercules A, et al. Open
855 Targets Genetics: systematic identification of trait-associated genes using large-scale genetics
856 and functional genomics. Nucleic Acids Research. 2020 Oct 12;49(D1):D1311–20.
857
858
859 39.Landrum MJ, Lee JM, Benson M, Brown GR, Chao C, Chitipiralla S, et al. ClinVar:
860 improving access to variant interpretations and supporting evidence. Nucleic Acids Research.
861 2017 Nov 20;46(D1):D1062–7.
862
863
864 40.Cariaso M, Lennon G. SNPedia: a wiki supporting personal genome annotation,
865 interpretation and analysis. Nucleic Acids Research. 2011 Dec 2;40(D1):D1308–12.
866
867
868 41.Sherry ST, Ward MH, Kholodov M, Baker J, Phan L, Smigielski EM, et al. dbSNP: the
869 NCBI database of genetic variation. Nucleic Acids Research. 2001 Jan 1;29(1).
870

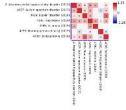


Figure 2: Spearman correlations between variables. The color scale ranges from -1.00 (blue) to 1.00 (red). The diagonal elements are all 1.00.

The variables are: 2016-2017-2018, 2017-2018, 2018-2019, 2019-2020, 2020-2021, 2021-2022, 2022-2023, 2023-2024, 2024-2025, 2025-2026, 2026-2027, 2027-2028, 2028-2029, 2029-2030, and 2030-2031.

The figure shows a strong positive correlation between adjacent years, with values ranging from approximately 0.45 to 0.99. The correlation is highest between adjacent years and lowest between years that are far apart.