

Updated Results of 3,050 Non-melanoma Skin Cancer (NMSC) Lesions in 1725 Patients Treated with High Resolution Dermal Ultrasound-Guided Superficial Radiotherapy, A Multi-institutional Study

Mairead Moloney¹, Peter Kaczmarks², Songzhu Zheng², Ariana Malik³, Daniel Ladd⁴, Donna Serure⁵, Lio Yu^{3,6}

1. New York Institute of Technology College of Osteopathic Medicine, Old Westbury, NY, USA
2. Stony Brook University, Stony Brook, NY, USA
3. Yu Oncology Medical, Dix Hills, NY, USA
4. Medical Director, Tru-Skin Dermatology, Austin, TX, USA
5. Chief of Dermatology, Laserderm Dermatology, Smithtown, NY, USA
6. Director of Radiation Oncology, Laserderm Dermatology, Smithtown, NY, USA

Corresponding Author:

Mairead Moloney, OMS-IV, BS

New York Institute of Technology College of Osteopathic Medicine, Old Westbury, NY, USA

Email: maireadhmoloney@gmail.com

ABSTRACT:

Background: Image-guided superficial radiation therapy (IGSRT) using a high resolution dermal ultrasound, is becoming an attractive non-surgical curative treatment option for nonmelanoma skin cancer (NMSC). We previously reported IGSRT treatment results from a multi-institutional study of 1616 patients with 2917 NMSC lesions (Yu *et al.* Oncol Ther 2021, <https://doi.org/10.1007/s40487-021-00138-4>) showing excellent local control (LC) of 99.3% with mean follow-up of 69.8 weeks (16.06 months).

Methods: This abstract analyzes an additional 93 patients with 133 lesions, updates previous findings with longer follow-up, using Kaplan-Meier statistics, and performs subgroup analysis. A total of 1709 patients with 3,050 Stage 0, I, and II NMSC lesions treated from 2017 to 2020 were retrospectively analyzed.

Results: Lesions received a median of 20 fractions of 50, 70, or 100 kilovoltage(kV) IGSRT using image guidance. Average follow-up was 25.06 months (108.9 weeks) with a maximum follow up of 65.6 months (285.0 weeks) for the entire cohort. 68 patients expired from unrelated causes with no-evidence of disease (NED) at last follow-up prior to death, thus Disease-Free-Survival (DFS) was 100%. Overall, 3,027 of 3,050 lesions achieved an absolute LC of 99.2%. Overall absolute LC for BCC, SCC, and SCCis was 99.0%, 99.2%, and 99.8%, respectively. No additional late complications were found to date as of January 2022.

Discussion: These updated results demonstrate that IGSRT continues to achieve a high level of LC with low complication rates. IGSRT should be considered an attractive first-line option for the non-surgical treatment of NMSC.

Keywords: Squamous Cell Carcinoma, Basal Cell Carcinoma, Non-melanoma Skin Cancer, Image-Guided Superficial Radiation Therapy

INTRODUCTION:

Non-melanoma skin cancer (NMSC) is the most common cancer in the United States (US) (1). The overwhelming majority of NMSC are comprised of basal cell carcinoma (BCC) and squamous cell carcinoma (SCC), which account for 99% of NMSC. Since NMSC are not reported to national cancer registries, the most current estimate of NMSC occurrences are from 2012, where it was estimated that there was 5.43 million NMSC lesions in the United States (US) population and 3.32 million patients treated for NMSC (2). The incidence of NMSC is expected to be increasing by two to three percent yearly (3). In 2023, this translates to 6.75 to 7.52 million lesions in 4.13 to 4.60 million individuals. Additionally, individuals often have more than one NMSC lesion and the incidence of subsequent lesions increases after initial lesion diagnosis (3).

NMSC is considered nonfatal and curable due to its slow growth, low recurrence, and rare metastasis (4). It is typically treated via surgical modalities, including Mohs Micrographic Surgery (MMS). However, NMSC occurs on the head and neck in 70-80% of cases, and surgery can leave scars and cosmetic defects (5). There are numerous non-surgical treatment modalities that exist with moderate control rates. Image-Guided Superficial Radiotherapy (IGSRT) which incorporates a high resolution dermal ultrasound has emerged recently as a modality that has excellent control rates comparable to MMS and is an attractive non-surgical treatment modality for the treatment of NMSC (5),(6).

From March 2016 to January 2020 a retrospective chart review of 1616 patients from seven out-patient dermatology practices with 2917 early-stage non-melanoma skin cancer (NMSC) lesions treated with image-guided superficial radiotherapy (IGSRT) was conducted. The study's objective was to assess the efficacy and safety of IGSRT in treating a large number of patients with NMSC lesions. In June 2021, the results were published, which showed an excellent local control (LC) of 99.3% with mean follow-up of 69.8 weeks (16.06 months) (5). These results have continued to allow physicians to offer IGSRT to their patients as a treatment for their early-stage NMSC lesions.

This purpose of this analysis is to add an additional 93 patients with 133 lesions from another out-patient dermatology practice and update the previous results with longer follow-up and provide a subgroup analysis.

METHODS:

The details regarding patient selection, treatment guidelines, study endpoints, and statistical analyses were discussed in the previous publication, and remain consistent for this updated analysis (Yu *et al.* Oncol Ther 2021, <https://doi.org/10.1007/s40487-021-00138-4>)(5). Statistical methods were augmented with Kaplan-Meier analysis.

PATIENTS:

A retrospective chart review of 1709 patients, including 93 additional patients treated with IGSRT for NMSC between March 2016 and January 2020 at 8 outpatient dermatology practices (7 previous dermatology practices, 1 additional dermatology practice) across the USA were analyzed. Lesion characteristics and treatment data at the time of treatment were collected retrospectively during the chart review.

Prior to treatment with IGSRT, lesion diagnosis and staging were confirmed via biopsy performed by a dermatologist at each practice.

The study cohort comprised of 756 female and 953 male patients (mean age 74.04 years [SD ± 10.64]) with 3,050 lesions treated from years 2016 to 2020. Each lesion was considered an independent cancer lesion and all lesions included in this analysis were stage Tis, T1, or T2. There was no clinical evidence of regional lymph node or distant disease (N0 and M0) at presentation, based on the American Joint Committee on Cancer (AJCC) 8th Ed. Cancer Staging Manual (7). The AJCC 8th Ed. staging is specific to cutaneous SCC of the head and neck, but for consistency these same criteria were applied to all BCC, SCC, and SCCIS lesions in this study.

Initially, data and follow-up intervals were extracted manually from written and electronic medical records. Subsequent updates to patient data and follow-up were accessed electronically via algorithmic analysis provided by a healthcare data company (Sympto Health, Inc.).

The authors adhered to the principles established in the Federal Policy for the Protection of Human Subjects, referred to as the "Common Rule," as well as the pertinent sections of the Helsinki Declaration and its amendments. The study protocol was reviewed by an IRB committee (WIRB-Copernicus Group) and received IRB exemption. The data have been de-identified for use in this study.

TREATMENT:

Treatment characteristics are summarized descriptively in **Table 1**. All lesions received a median of 20 fractions (range 13-30 fractions) of 50, 70, 100, or mixed (ie. 50/70, 70/100, 50/70/100) kilovoltage (kV) IGSRT. Ultrasound imaging allowed for energy selection before and during treatment. The median dose per fraction was 258.72 cGy (mean 259.24 cGy [SD +/- 10.42]). The median total dose received was 5184.3 cGy (mean 5215.95 cGy [SD +/- 222.25]). Median treatment duration was 6.71 weeks (mean 6.94 weeks [SD +/- 1.53]). Median time dose fraction (TDF) was 90 (mean 90.82 [SD +/- 4.76]). During IGSRT treatment, patients were evaluated at each session clinically and with ultrasound imaging and treatment dosing adjustments were made if necessary.

IGSRT Treatment Characteristics		
Total Dose Received (cGy)	Mean	5215.95 (SD +/- 222.25)
	Median	5184.3 (IQR: 5096, 5336)
	Range	3715.95 - 7363.68
Number of Fractions	Mean	20.13 (SD +/- 0.72)
	Median	20 (IQR: 20, 20)
	Range	13 - 30
Dose Per Fraction (cGy)	Mean	259.24 (SD +/- 10.42)
	Median	258.72 (IQR: 254.40, 265.47)
	Range	14.56 - 401.76
Treatment Duration (weeks)	Mean	6.94 (SD +/- 1.53)
	Median	6.71 (IQR: 6.14, 7.43)
	Range	4 - 22.43
Time Dose Fractionation (TDF)	Mean	90.82 (SD +/- 4.76)
	Median	90 (IQR: 87.53, 94)
	Range	75.86 - 138

Table 1. Treatment characteristics for tumor treatment with Image-Guided Superficial Radiation Therapy (IGSRT).

FOLLOW-UP:

Once treatment ended patients were evaluated 2-6 weeks after treatment completion and every 1-6 months thereafter.

STUDY ENDPOINTS:

This study's main outcome measure was lesion recurrence assessed by local control (LC) and Kaplan-Meier (KM) LC analysis with follow-up through January 2022. LC was assessed at follow-up visits clinically by dermatology providers. IGSRT's safety was assessed by Radiation Treatment Oncology Group (RTOG) toxicity, which was prospectively documented in the charts routinely after every 5-fractions. RTOG data was extracted and documented as the highest RTOG grade from the entire treatment course. Certain study locations did not maintain a procedure to record RTOG toxicity grades for IGSRT patients in the initial study year(s), accounting for the missing values on this measure of safety/toxicity.

STATISTICAL METHODS:

Treatment information, patient demographics, tumor characteristics, and RTOG toxicity were summarized descriptively. Treatment information included total dose received (cGy), number of fractions, dose per fraction (cGy), energy (kV), treatment duration, and time dose fractionation (TDF)^A. Duration of follow-up was defined as the date of last follow-up minus treatment completion date plus one day and then converted to both weeks and months.^B Patient demographics included total patients, age at first treatment, gender, follow-up interval, and deaths. Tumor characteristics included number of lesions, lesion histopathology, lesion size, lesion recurrences, and lesion location. Lesion histopathology separated by tumor stage and lesion histopathology separated by energy treatment were also provided. Acute toxicities were graded with RTOG (Radiation Treatment Oncology Group) toxicity scoring (8).

Summary statistics for continuous outcomes included the number of observations (n), mean, standard deviation, median, interquartile range, and range. Categorical outcomes were summarized with frequency and percentages. Missing data were not included. SAS® Studio was used for all analyses and verification with R Studio.

All patients were included in the intent-to-treat analysis. Overall LC and KM LC were reported. KM LC was reported based on lesion histology was compared using log-rank tests.

Subgroup analyses of patients with ≥12-month follow-up, ≥24-month follow-up, and breakdown by histology (BCC, SCC, SCCIS) were performed. Number of lesions, lesions recurred, absolute local control, overall 5-year KM LC, and 5-year KM LC by histology subtype were reported.

For this updated report, the results are based on all the information received by January 14th, 2022.

^A The IGSRT treatment protocol has evolved over the past 5-6 years, specifying time dose fractionation (TDF) number/dose/fractionation based on ultrasound depth and tumor type. This protocol recommends a fractionation dose range of 245-279 cGy for 20 fractions 3-4 times a week to achieve a therapeutic biological dose range of 90-99 or greater TDF number using 50, 70, or 100 kV energy. Higher doses per fraction and/or more fractions were recommended for larger, deeper, and high-risk lesions (5).

^B If follow-up date was unavailable, treatment completion date was used as the last follow-up date. If treatment completion date was unavailable, treatment start date was used as the treatment completion date and last-follow-up date. Days were converted to months using the approximation of 30.417 days per month and days were converted to weeks using 7 days per week.

RESULTS:

PATIENT DEMOGRAPHICS AND TUMOR CHARACTERISTICS:

Table 2 details patient demographics. Median age at first treatment was 74.45 years (mean 74.04 years [SD +/- 10.64 years]). There was slight predominance of male patients at 55.8% (953 patients) with 756 female patients (44.2%). Median follow-up was 25.38 months (mean 25.06 months [SD +/- 17.10 months]).

Tumor characteristics are described in **Table 3**. All lesions were stage Tis, T1 or T2 with BCC representing 47.9%, followed by SCC (30.3%) and SCCIS (21.2%). Median lesion size was 1.0 cm (mean 1.23 cm [SD +/- 0.65 cm]), showing that these are substantial lesions. Lesion histopathology separated by lesion stage is depicted in **Table 4**. Lesion histopathology separated by treatment energy is depicted in **Table 5**. Lesion histopathology separated by lesion location is depicted in **Table 6**.

As of January 2022, 1,641 of 1,709 patients were alive. 68 patients expired from unrelated causes with no-evidence of disease (NED) at last follow-up prior to death, thus Disease-Free-Survival (DFS) was 100%.

Patient Demographics		
Total Patients		1709
Age at 1st Treatment (Years)	Mean	74.04 (SD +/- 10.64)
	Median	74.45 (IQR: 68.05, 81.59)
	Range	31.80 - 104.52
Gender	Female	756
	Male	953
Follow-up Interval (Months)	Mean	25.06 (SD +/- 17.10)
	Median	25.38 (IQR: 9.45, 38.43)
	Range	0.03 - 65.59
Death* (Number of Patients)		68

*Death from other causes

Table 2. Patient demographics at time of lesion treatment with Image-Guided Superficial Radiation Therapy (IGSRT).

Tumor Characteristics		
Total Lesions		3050
Histopathology	BCC	1460
	SCC	924
	SCCIS	648
	BCC / SCC	11
	BCC / SCCIS	1
	SCC / SCCIS	2
	BCC / SCC / SCCIS	0
	No Data Recorded	4
Lesion Size (cm)**	Mean	1.23 (SD +/- 0.65)
	Median	1 (IQR: 1, 1.5)
	Range	0.05 - 5.5*
Recurrences (Number of Lesions)	BCC	15
	SCC	7
	SCCIS	1
	BCC / SCC	0
	BCC / SCCIS	0
	SCC / SCCIS	0
	BCC / SCC / SCCIS	0
	Total Recurrences	23

*SCCIS (Squamous Cell Carcinoma In-Situ) all with full thickness atypia

**28 lesions with no size recorded

Table 3. Tumor characteristics at time of lesion treatment with Image-Guided Superficial Radiation Therapy (IGSRT).

Lesion Histopathology							
Stage	BCC	SCC	SCCIS	BCC / SCC	BCC / SCCIS	SCC / SCCIS	Total
0	0	0	648	0	1	2	651
1	1221	763	0	8	0	0	1992*
2	239	161	0	3	0	0	403**
Total	1460	924	648	11	1	2	3046

*Two Stage 1 lesions are missing histopathology data (Total Stage 1 Lesions = 1994)

**Two Stage 2 Lesions are missing histopathology data (Total Stage 2 Lesions = 405)

Table 4. Lesions separated by histopathology and tumor stage.

Lesion Histopathology							
Energy (kV)	BCC	SCC	SCCIS	BCC / SCC	BCC / SCCIS	SCC / SCCIS	Total Number of Lesions
50	602	373	519	7	1	0	1502*
70	433	166	44	1	0	0	644*
100	14	20	0	0	0	0	34
Mixed Energy							
50/70	373	316	83	3	0	2	777*
50/100	0	0	0	0	0	0	0
70/100	31	39	0	0	0	0	70
50/70/100	5	5	0	0	0	0	10
Total Number of Lesions	1458**	919**	646**	11	1	2	3037

**No histopathology data on 4 lesions (2 lesions treated with 50 kV, 1 lesion treated with 70kV, and 1 lesion treated with 50/70kV)

**No energy (kV) information for 9 lesions (2 BCC lesions, 5 SCC lesions, 2 SCCIS lesions)

Table 5. Lesions separated by histopathology and energy (kV) treatment.

Site	BCC, N=1457*	SCC, N=923*	SCCIS, N=647*	BCC/SCC, N=11	BCC/SCCIS, N=1	SCC/SCCIS, N=2	Total, N=3041**
Head and Neck (H&N)	1065	551	405	8	1	2	2032
<i>H&N sublocation</i>							
Ear	124	95	55	2	0	0	276
Scalp	53	84	59	0	0	1	197
Forehead	112	79	86	0	0	0	277
Temple	41	20	12	1	0	0	74
Forehead/Temple	0	0	1	0	0	0	1
Eyebrow	5	2	4	0	0	0	11
Eyelid & Canthus	24	2	1	0	0	0	27
Nose	373	81	52	3	0	0	509*
Cheek	204	122	105	2	1	1	435*
Cutaneous Lip	51	13	7	0	0	0	71*
Mucosal Lip	5	13	4	0	0	0	22
Chin	7	0	0	0	0	0	7
Jawline	2	3	0	0	0	0	5
Chin/Jawline	1	0	0	0	0	0	1
Neck	63	36	19	0	0	0	118
Other	0	1	0	0	0	0	1
Extremities	173	310	197	1	0	0	681*
<i>Extremities sublocation</i>							
Hand	11	78	57	0	0	0	146
Other	162	232	140	1	0	0	535
Shoulder	61	15	11	0	0	0	87
Trunk	158	46	34	2	0	0	240
<i>Trunk sublocation</i>							
Chest	46	26	13	0	0	0	85
Back	101	20	21	1	0	0	143
Other	11	0	0	1	0	0	12
Penis	0	1	0	0	0	0	1

*5 lesion locations not recorded (3 BCC, 1 SCC, 1 SCCIS)

**4 lesions with no recorded histopathology (1 extremity lesion [not a hand], 1 nose lesion, 1 cheek lesion, 1 cutaneous lip lesion)

Table 6. Lesions separated by histopathology and lesion location.

OUTCOMES:

ABSOLUTE LOCAL CONTROL (LC):

At a mean follow-up of 25.06 months, 3,027 of 3,050 lesions achieved local control with 23 recurrences (15 BCC, 7 SCC, 1 SCCIS), resulting in an overall absolute LC of 99.2%. Absolute local control for BCC, SCC and SCCIS were 99.0%, 99.2%, and 99.8%, respectively.

KAPLAN MEIER LOCAL CONTROL (KM LC) at ≥ 5 Years:

Overall 5-year KM LC was 98.81% and unchanged at maximum follow-up of 65.56 months (**Figure 1**). KM LC for BCC was 98.17% at 5-years (60 months). KM LC for SCC was 99.01% at 5 years (60 months) (**Figure 2**). KM LC for SCCIS was 99.71% at 5-years (60 months). Comparison of KM LC between histologic subtypes was not statistically significant using log-rank tests ($p=0.0630$, $\alpha=0.05$).

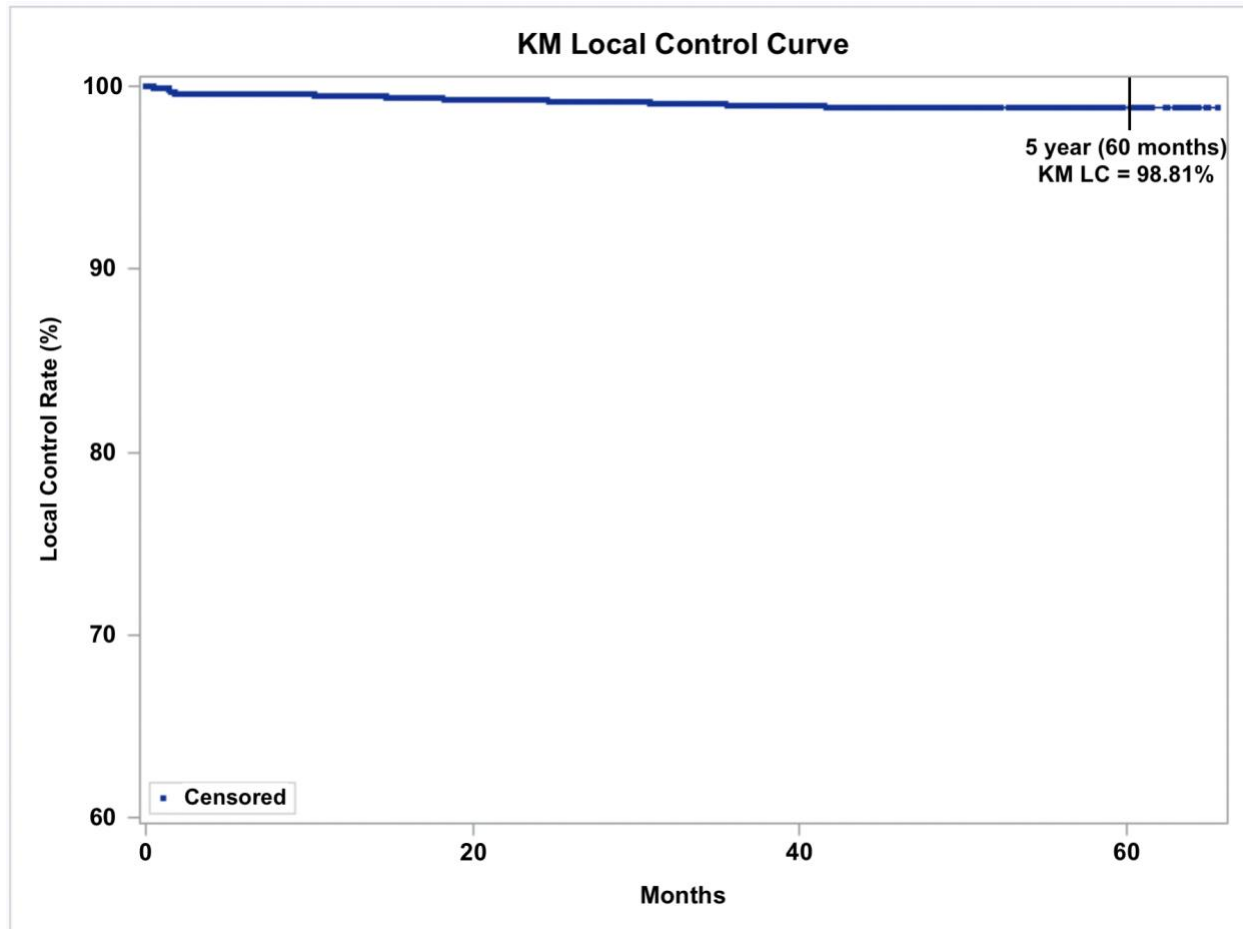


Figure 1. Kaplan-Meier Local control (KM LC) for all 3,050 lesions treated with IGSRT (Image-Guided Superficial Radiation Therapy). Dots represent censored events. (Note: Y-axis starts at 60%).

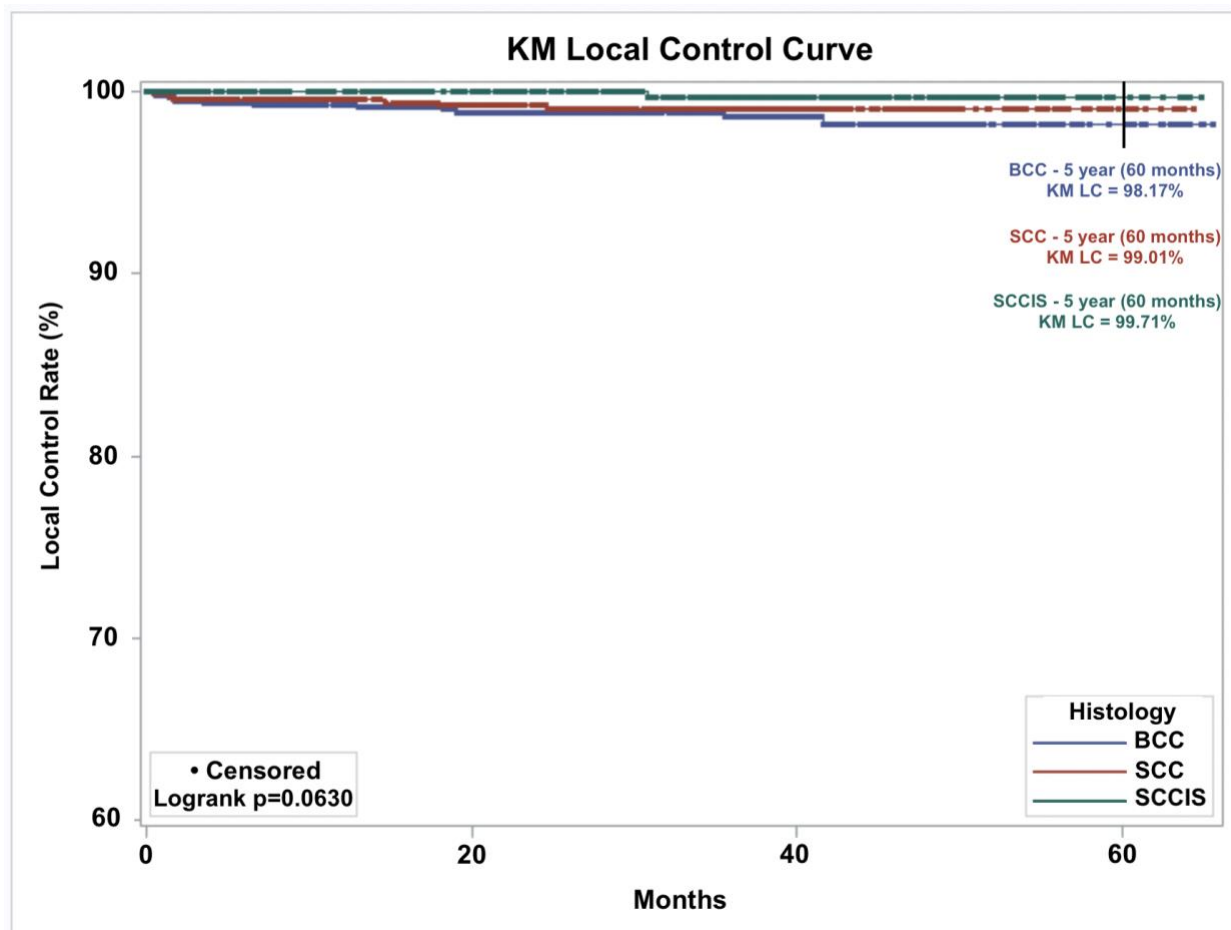


Figure 2. Kaplan-Meier Local control (KM LC) by histologic subtype of 3,032 lesions (Basal Cell Carcinoma (BCC) = 1,460 lesions, Squamous Cell Carcinoma (SCC) = 924 lesions, SCC In-Situ (SCCIS) = 648 lesions) treated with IGSR (Image-Guided Superficial Radiation Therapy). Dots represent censored events. (Note: Y-axis starts at 60%).

TREATMENT TOLERANCE:

All lesions had minimal or mild toxicity (RTOG 0, 1, 2) with only 20 lesions having severe or significant toxicity (RTOG 3, 4) based on the RTOG toxicity scoring (8) (**Table 7**). No additional late complications were found to date as of January 2022.

RTOG	Number of Lesions (n = 2,310)*
0	1
1	1818
2	471
3	16
4	4

*Certain study locations did not maintain a procedure to record RTOG toxicity grades for IGSRT patients in the initial study year(s), accounting for the missing values on this measure of safety.

Table 7. Acute toxicities RTOG (Radiation Treatment Oncology Group) grades for lesions treated with IGSRT (Image-Guided Superficial Radiation Therapy) (8).

SUBGROUP ANALYSIS:

Subgroup analysis of lesions with follow-up greater than or equal to 12 months and 24 months is summarized in **Table 8** and **Table 9**.

Subgroup with ≥ 12 -Month Follow-up:

A total of 2174 lesions had a follow-up time of greater than or equal to 12 months, representing 71.3% of all lesions. A total of 9 lesions recurred. Resulting in an overall absolute LC of 99.6% and overall KM LC was 99.32% at 5-years (60 months). KM LC for BCC lesions was 98.96%, for SCC lesions was 99.48%, and for SCCIS lesions 99.71% at 5-years (60 months) (**Figure 3**). Comparison of KM LC between histologic subtypes was not statistically significant ($p=0.5776$, $\alpha=0.05$).

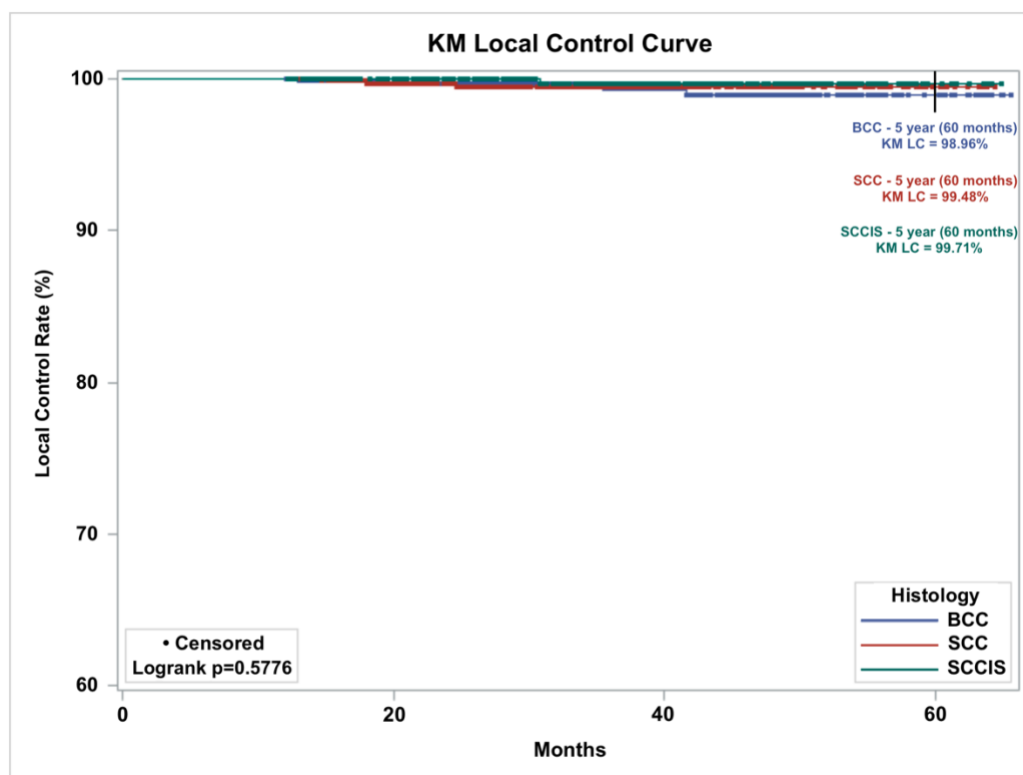


Figure 3. Kaplan-Meier Local control (KM LC) by histologic subtype of 2,174 lesions treated with IGSRT (Image-Guided Superficial Radiation Therapy) with a follow-up of greater than or equal to 12 months. Dots represent censored events. (Note: Y-axis starts at 60%).

Subgroup with ≥ 24 -Month Follow-up:

A total of 1615 lesions had a follow-up time of greater than or equal to 24 months, representing 53.0% of all lesions. A total of 4 lesions recurred. Resulting in an overall absolute LC of 99.8% and overall KM LC was 99.57% at 5-years (60 months). KM LC for BCC lesions was 99.30%, for SCC lesions was 99.80%, and for SCCIS lesions 99.71% at 5-years (60 months) (**Figure 4**). Comparison of KM LC between histologic subtypes was not statistically significant ($p=0.9301$, $\alpha=0.05$).

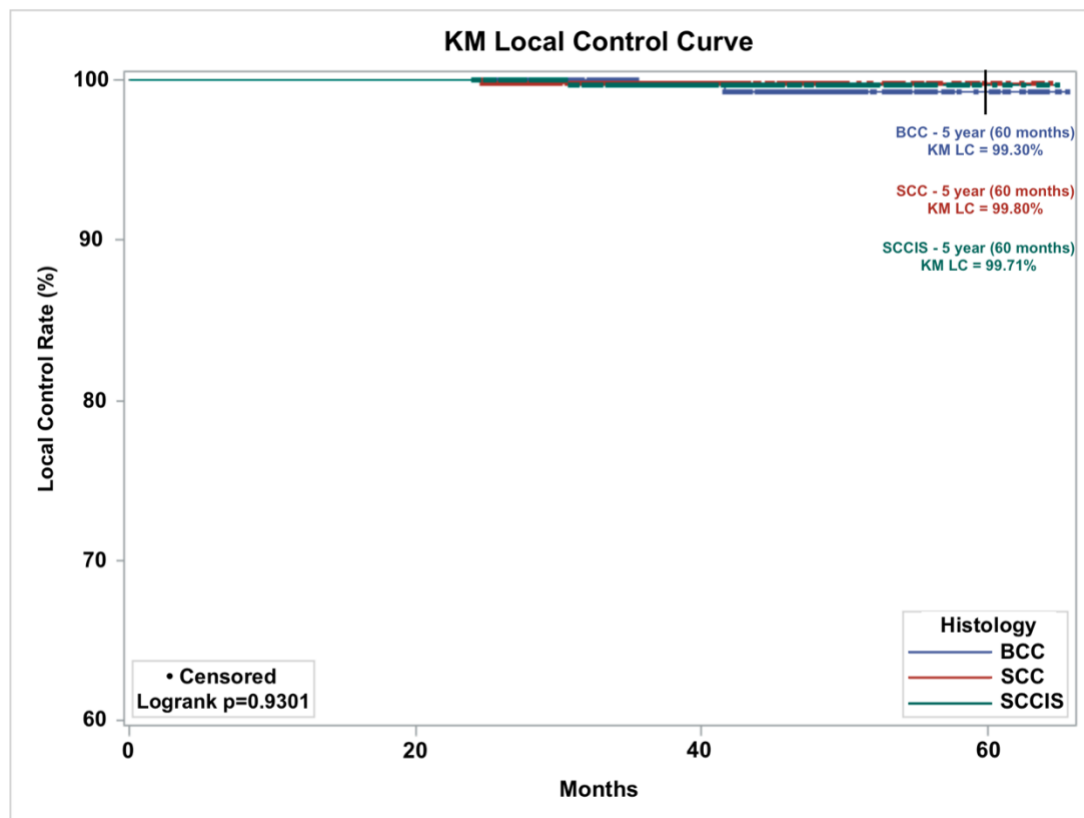


Figure 4. Kaplan-Meier Local control (KM LC) by histologic subtype of 1,615 lesions treated with IGSRT (Image-Guided Superficial Radiation Therapy) with a follow-up of greater than or equal to 24 months. Dots represent censored events. (Note: Y-axis starts at 60%).

Subgroup Analysis			
	All Lesions	>= 12-Month Follow-up	>= 24-Month Follow-up
Number of Lesions	3050	2174	1615
Lesions Recurred	23	9	4
Absolute Local Control (LC)	99.2%	99.6%	99.8%
Overall 5-Year Kaplan Meier Local Control (KM LC)	98.81%	99.32%	99.57%

Table 8. Subgroup analysis comparing absolute local control (LC) and overall 5-year Kaplan Meier local control (KM LC) for all lesions, lesions with follow-up \geq 12-months, and lesions with follow-up \geq 24-months.

Subgroup Analysis			
	All Lesions	>= 12-Month Follow-up	>= 24-Month Follow-up
Number of Lesions	3032	2163*	1608*
5-Year KM LC - BCC	98.17%	98.96%	99.30%
5-Year KM LC - SCC	99.01%	99.48%	99.80%
5-Year KM LC - SCCIS	99.71%	99.71%	99.71%

*Lesions with mixed histology or no histology recorded were not included.

Table 9. Subgroup analysis comparing 5-year Kaplan Meier local control (KM LC) separated by histopathologic subtype (BCC, SCC, SCCIS only) for all lesions, lesions with follow-up \geq 12-months, and lesions with follow-up \geq 24-months.

DISCUSSION:

This analysis updates the results of the largest multi-institutional analyses of the utilization of image-guided superficial radiation therapy (IGSRT) for the curative treatment of early-stage NMSC. Our updated results support the initial findings and this analysis with longer follow-up has a similar absolute LC rate to previously published results. Absolute LC rate of 99.2% (mean follow-up 25.06 months) versus the previously reported local control rate of 99.3% (mean follow-up 16.06 months), show that the absolute LC remains substantively unchanged with additional patients and longer follow-up (5).

Currently there are few modern studies on the use of IGSRT or even non-image guided SRT for the treatment of early-stage NMSC. An extensive literature search conducted by the American Society for Radiation Oncology (ASTRO) from 1988 to 2018 showed that there were limited randomized controlled trials (RCT) on radiotherapy (9). Additionally, our own PubMed search revealed that there are no published studies looking at the use of IGSRT for the curative treatment of NMSC, besides the previous analysis that this manuscript updates and an additional two manuscripts published by the authors (4), (5), (6). One of the more recently published analyses by the authors that utilized IGSRT for the curative treatment of NMSC lesions demonstrated an overall absolute LC of 99.7% and a 5-year KM LC of 99.41% for 1899 NMSC lesions in 1243 patients (6). The study by Tran et al. utilized a different cohort of patients having similar histology and stages of lesions showing the results were comparable to our current analysis which updated the 2021 study demonstrating that IGSRT yields consistently excellent results.

Our updated results have a mean follow-up of greater than 2 years with approximately $\frac{3}{4}$ of the lesions analyzed having a follow-up of greater than or equal to 1 year (71.3%) and approximately $\frac{1}{2}$ of the lesions analyzed having a follow-up of greater than or equal to 2 years (53.0%). In the previously published manuscript, we compared our results to a study by Cognetta et al. from 2012 that utilized non-image guided SRT and is one of the more modern studies using SRT to treat NMSC with curative intent. However, at that time only 55% of our patients had a follow-up greater than or equal to 1 year. The study by Cognetta et al. reported a 2-year recurrence rate for BCC and SCC lesions at 2.0% and 1.8% for BCC and SCC, respectively (10). Thus, the 2-year absolute LC would be 98.0% and 98.2% for BCC and SCC, respectively. Our results continue to be consistent and exceed those reported by Cognetta et al.

The likelihood of local recurrence for early-stage NMSC is small after two years. A majority (70-80%) of SCC are thought to recur within the first 2 years after primary tumor treatment with 95% of SCC recurrences occurring within 5 years (11). Whereas for BCC, approximately 50% of recurrences occur within the first 2 years after treatment of the primary tumor with 80% of BCC recurrences occurring with 5 years (12). Although some reports suggests that BCC recurrences primarily occur within the first 4-12 months (11). Our results corroborate with the latter.

Additionally, we previously compared our preliminary results to another SRT study by Hernández-Machin et al. (13). Hernández-Machin et al. reported 5-year absolute LC rates of 94.4% for BCC lesions and 92.7% for SCC lesions. With these results, the authors recommended SRT as a first line treatment option for NMSC. Our estimated 5-year KM LC remains higher at 98.81%. This is consistent with our belief that image guidance is most likely responsible for the improved outcomes.

Our improved absolute LC results over those of other studies that utilized SRT alone or external beam radiation therapy (XRT) without image guidance, is statistically significant. Two recent studies, a metanalysis and a logistic regression analysis, compared IGSRT studies to large well run SRT/XRT studies without image guidance. Both analyses found that the LC rates for the IGSRT studies were statistically superior to the non-image-guided SRT/XRT studies (14), (15). The image-guided component of SRT utilizes a 22 megahertz (MHz) dermal ultrasound with color doppler to visualize the superficial depth of the skin. This image-guided component allows the physician to visualize the lesion prior to, during, and after treatment. During treatment, the physician can make any necessary adjustments to the treatment regimen.

Our large patient sample from multiple institutions support that's this office-based technology, IGSRT, is feasible, effective, safe and easily tolerable in an out-patient setting. Almost all lesions had minimal or mild toxicity scores (RTOG 0, 1, 2). Our updated results support that IGSRT, with longer follow-up, continue to offer a high local control rate felt to be comparable to the best surgical techniques (14) (15) and continues to be an effective non-invasive, non-surgical treatment modality for NMSC with its major advantages of avoiding the pitfalls of surgery clinically, cosmetically, physiologically and psychologically. These updated results validate our prior statement that IGSRT should be a primary non-surgical option presented to patients for treatment of their early-stage NMSC lesions.

REFERENCES:

1. American Cancer Society. What Are Basal and Squamous Cell Skin Cancers? [Internet]. 2019 [cited 2022 Apr 26]. Available from: <https://www.cancer.org/cancer/basal-and-squamous-cell-skin-cancer/about/what-is-basal-and-squamous-cell.html#references>
2. Rogers HW, Weinstock MA, Feldman SR, Coldiron BM. Incidence Estimate of Nonmelanoma Skin Cancer (Keratinocyte Carcinomas) in the U.S. Population, 2012. *JAMA dermatology*. 2015 Oct;151(10):1081–6.
3. Marcil I, Stern RS. Risk of Developing a Subsequent Nonmelanoma Skin Cancer in Patients With a History of Nonmelanoma Skin Cancer: A Critical Review of the Literature and Meta-analysis. *Arch Dermatol* [Internet]. 2000 Dec 1;136(12):1524–30. Available from: <https://doi.org/10.1001/archderm.136.12.1524>
4. Yu L, Moloney M, Beers R, Serure D. Enhancing Cosmesis While Achieving High Cure Rates for Early Stage Non-Melanoma Skin Cancer in the Outpatient Dermatology Clinic Using a Novel Non-Invasive Modality. *Clin Dermatology Res Ther*. 2021;4(1):1–10.
5. Yu L, Oh C, Shea CR. The Treatment of Non-Melanoma Skin Cancer with Image-Guided Superficial Radiation Therapy: An Analysis of 2917 Invasive and In Situ Keratinocytic Carcinoma Lesions. *Oncol Ther*. 2021 Jun;9(1):153–66.
6. Tran A, Moloney M, Kaczmarek P, Zheng S, Desai A, Desai T, et al. Analysis of image-guided superficial radiation therapy (IGSRT) on the treatment of early - stage non - melanoma skin cancer (NMSC) in the outpatient dermatology setting. *J Cancer Res Clin Oncol*. 2023;
7. Amin MB, Edge S, Greene F, Byrd DR, Brookland RK, Washington MK, et al. *AJCC Cancer Staging Manual*. 8th ed. New York, NY: Springer; 2017.
8. Cox JD, Stetz JA, Pajak TF. Toxicity criteria of the Radiation Therapy Oncology Group (RTOG) and the European organization for research and treatment of cancer (EORTC). *International Journal of Radiation Oncology, Biology, Physics*. 1995.
9. Likhacheva A, Awan M, Barker CA, Bhatnagar A, Bradfield L, Brady MS, et al. Definitive and Postoperative Radiation Therapy for Basal and Squamous Cell Cancers of the Skin: Executive Summary of an American Society for Radiation Oncology Clinical Practice Guideline. *Pract Radiat Oncol*. 2020;10(1):8–20.
10. Coggnetta AB, Howard BM, Heaton HP, Stoddard ER, Hong HG, Green WH. Superficial x-ray in the treatment of basal and squamous cell carcinomas: A viable option in select patients. *J Am Acad Dermatol* [Internet]. 2012;67(6):1235–41. Available from: <http://dx.doi.org/10.1016/j.jaad.2012.06.001>
11. Samarasinghe V, Madan V. Nonmelanoma skin cancer. *J Cutan Aesthet Surg*. 2012 Jan;5(1):3–10.
12. Aasi SZ. Treatment and prognosis of basal cell carcinoma at low risk of recurrence [Internet]. UpToDate. 2020 [cited 2022 Jul 21]. p. 1–37. Available from: <https://www.uptodate.com/contents/treatment-and-prognosis-of-basal-cell-carcinoma-at-low-risk-of-recurrence>
13. Hernández-Machin B, Borrego L, Gil-garcía M, Hernández BH. Office-based radiation therapy for cutaneous carcinoma: Evaluation of 710 treatments. *Int J Dermatol*. 2007;46(5):453–9.
14. Yu L, Moloney M, Tran A, Zheng S, Rogers J. Local control comparison of early-stage non-melanoma skin Cancer (NMSC) treated by superficial radiotherapy (SRT) and external beam radiotherapy (XRT) with and without dermal image guidance: a meta-analysis. *Discov Oncol* [Internet]. 2022;13(129). Available from: <https://doi.org/10.1007/s12672-022-00593-z>
15. Yu L, Moloney M, Zheng S, Rogers J. High resolution dermal ultrasound (US) combined with superficial radiation therapy (SRT) versus non-image guided SRT or external beam radiotherapy (XRT) in early-stage epithelial cancer: a comparison of studies. *BMC Cancer*. 2023;23(1):1–7.